

V&V Reference Report

L2 ASCDS Version : 8.5

Observation 4990 - L2 Version 3
Chandra X-Ray Center

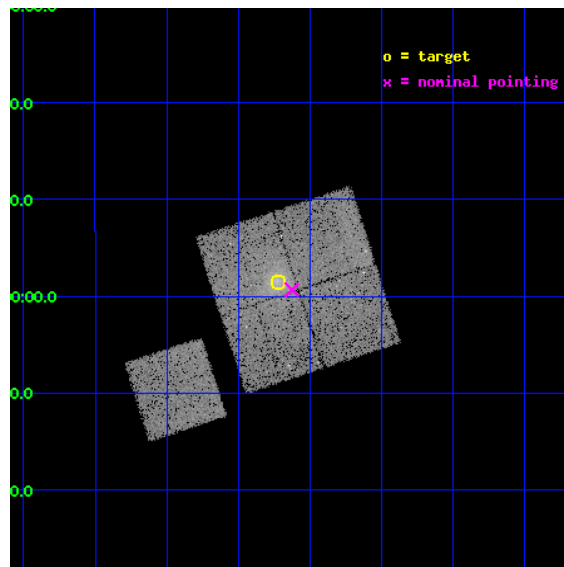
L2 Processing Date : Dec 7 2012

Contents

1	Front	2
2	OBI	3
2.1	OBI	3
2.1.1	Images	3
2.1.2	Bias	3
2.1.3	Parameters	4
2.1.4	Events	4
2.2	Compared Parameters	5
2.3	Aspect	6
2.4	Star Slots	9
2.4.1	Slot 3	9
2.4.2	Slot 4	10
2.4.3	Slot 5	11
2.4.4	Slot 6	12
2.4.5	Slot 7	13
2.5	FID Slots	14
2.5.1	Slot 0	14
2.5.2	Slot 1	15
2.5.3	Slot 2	16
A	Summary	17
A.1	Status	17
A.2	Comments	17

1 Front

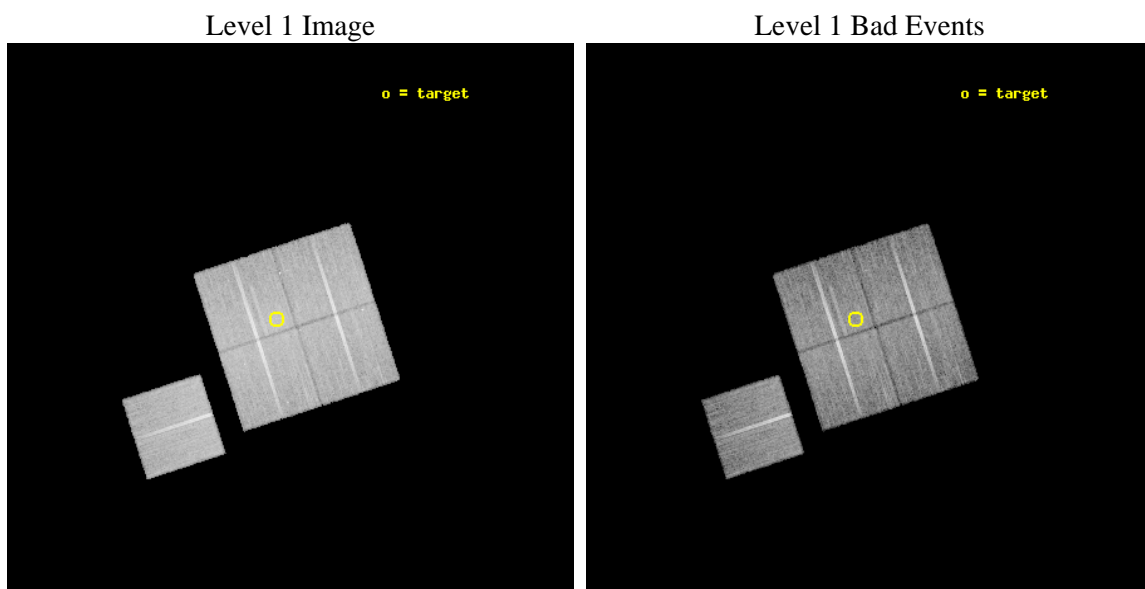
seq_num	800433	Sequence number
obs_id	4990	Observation id
title	X-ray Properties of a Mass-Selected Group Catalogue: A Pilot Study	
observer	Dr Richard Bower	Principal investigator
object	2dF Selected Group	Source name
dtcycle	0	
cycle	P	events from which exps? Prim/Second/Both
ra_targ	198.055833	Observer's specified target RA [deg]
dec_targ	-0.974806	Observer's specified target Dec [deg]
ra_nom	198.03172545227	Nominal RA [deg]
dec_nom	-0.98892753706907	Nominal Dec [deg]
roll_nom	251.96652448318	Nominal Roll [deg]
revision	3	Processing version of data
ontime	21767.589443296	Sum of GTIs [s]
livetime	21483.179862153	Livetime [s]
ontime0	21770.607313424	Sum of GTIs [s]
ontime1	21761.225512415	Sum of GTIs [s]
ontime2	21770.689393431	Sum of GTIs [s]
ontime3	21767.589443296	Sum of GTIs [s]
ontime6	21770.566243529	Sum of GTIs [s]
l2events	62931	Number of level 2 events



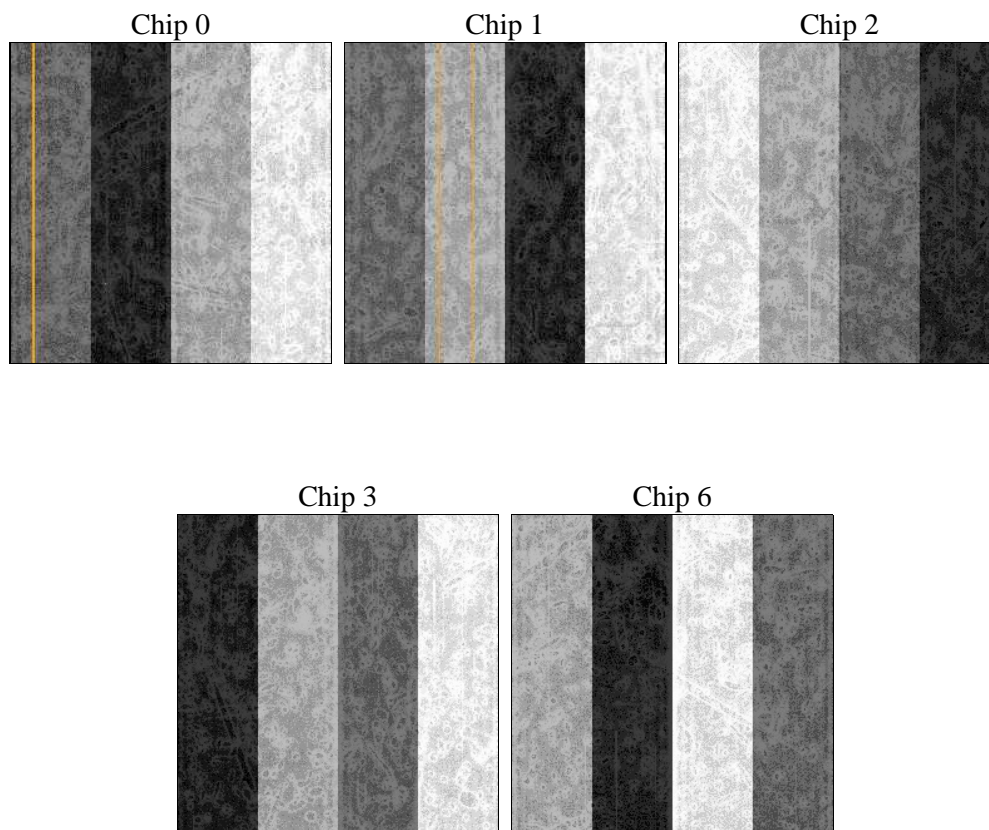
2 OBI

2.1 OBI

2.1.1 Images



2.1.2 Bias



2.1.3 Parameters

obi_num	0	Obi number	sched_exp_time	22000.000000	[s] Scheduled observation exposure time
ascdsver	8.5	Processing system revision	ontime	21767.589443296	Sum of GTIs [s]
caldsver	4.5.4	 	ontime0	21770.607313424	Sum of GTIs [s]
date	2012-12-07T16:19:24	Date and time of file creation	ontime1	21761.225512415	Sum of GTIs [s]
revision	3	Processing version of data	ontime2	21770.689393431	Sum of GTIs [s]
			ontime3	21767.589443296	Sum of GTIs [s]
			ontime6	21770.566243529	Sum of GTIs [s]
			l1events	677240	Number of level 1 events

2.1.4 Events

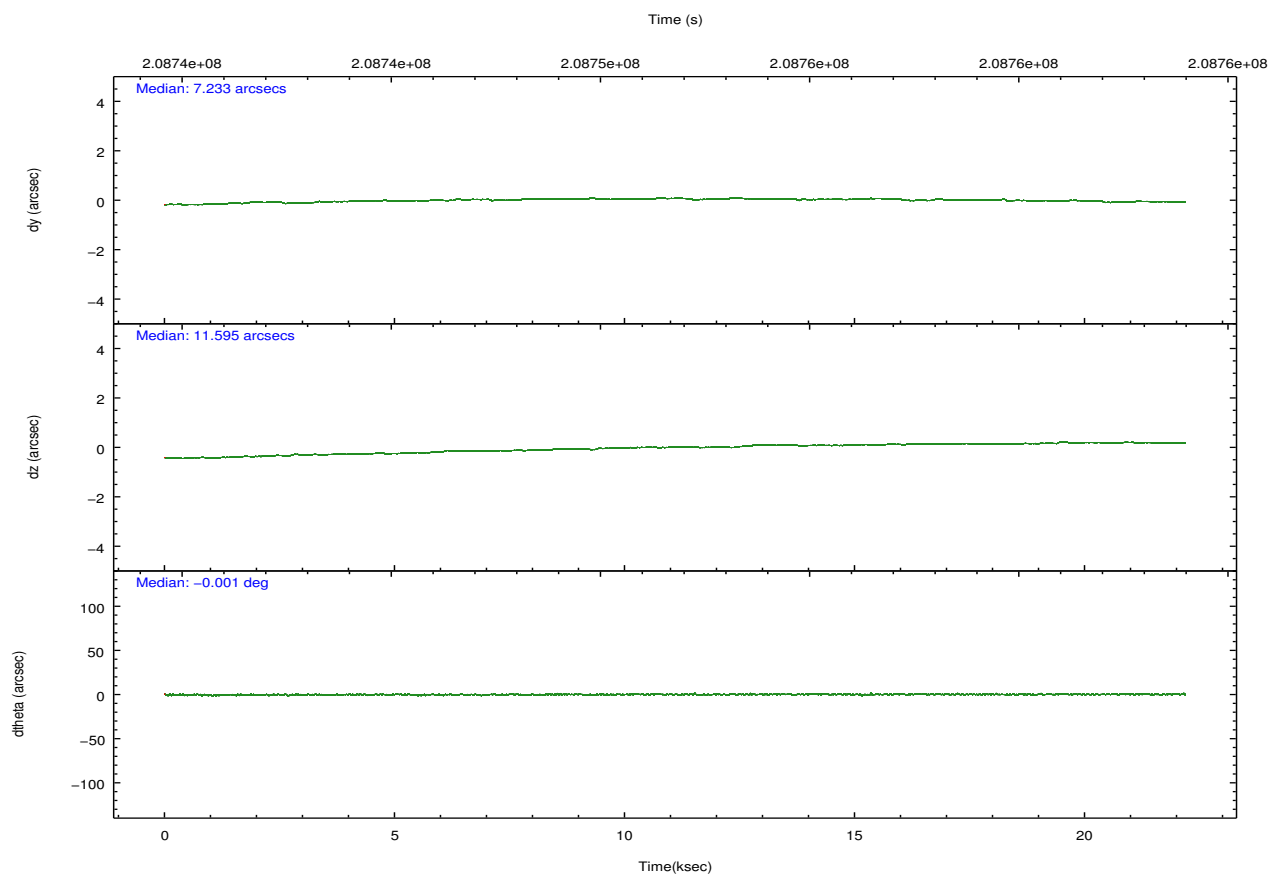
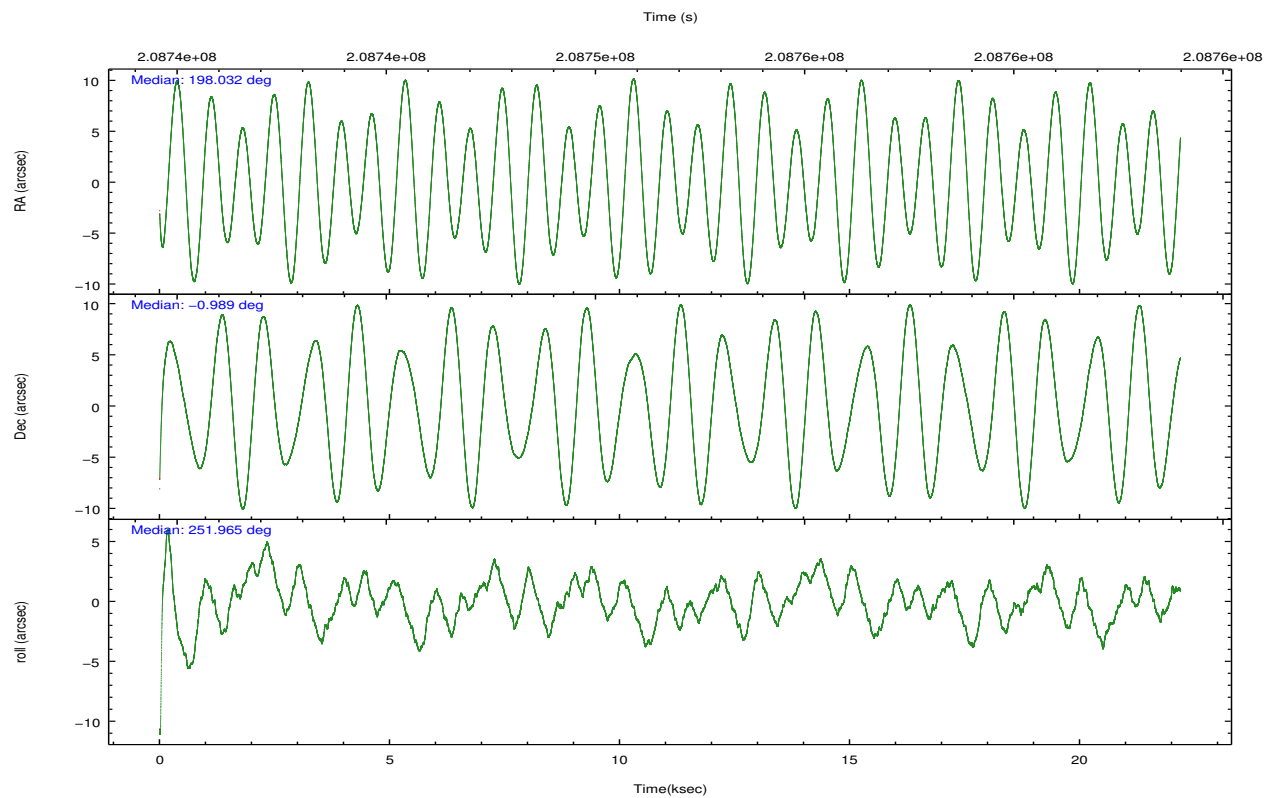
	ccd 0	ccd 1	ccd 2	ccd 3	ccd 6
level 1 events	127740	130283	140761	141207	137249
rejected events	113655	114308	126470	124181	123501
rejected %	88%	87%	89%	87%	89%

	ccd 0	ccd 1	ccd 2	ccd 3	ccd 6
grade 0 events	5260	6061	5726	8184	4712
	4%	4%	4%	5%	3%
grade 1 events	58	63	66	91	51
	0%	0%	0%	0%	0%
grade 2 events	3284	3419	3090	3156	2902
	2%	2%	2%	2%	2%
grade 3 events	1576	1746	1487	1549	1655
	1%	1%	1%	1%	1%
grade 4 events	1446	1722	1533	1492	1555
	1%	1%	1%	1%	1%
grade 5 events	4749	5079	4495	5322	5300
	3%	3%	3%	3%	3%
grade 6 events	2525	3031	2459	2652	2931
	1%	2%	1%	1%	2%
grade 7 events	108842	109162	121905	118761	118143
	85%	83%	86%	84%	86%

2.2 Compared Parameters

Parameter	Planned	Actual	Parameter	Planned	Actual
Instrument	ACIS	ACIS	Obspar format version number	7	7
Detector	ACIS-01236	ACIS-01236	Obspar file type	PREDICTED	ACTUAL
Grating	NONE	NONE	Obspar update status	NONE	UPDATED
Data mode	VFAINT	VFAINT	Number of optional ACIS chips dropped	0	0
Observation mode	POINTING	POINTING	On-chip summing requested	N	N
[deg] Pointing RA	198.025948	198.0317254522714	Subarray requested	NONE	NONE
[deg] Pointing Dec	-0.962153	-0.9889275370690743	Alternating exposures requested	N	N
[deg] Pointing Roll	251.757754	251.9665244831844	[s] Primary exposure time	0.000000	3.1
[mm] SIM focus pos	-0.782348	-0.7809083437167272			
[mm] SIM defocus	0	0.001439871863259334			
[mm] SIM translation stage pos	-233.592463	-233.5874344608287			
[mm] SIM translation stage offset	0	-0.005018542100998502			
[s] Observation start time (MET)	208740884.184000	208739625.17885			
Observation start date	2004-08-12T23:33:40	2004-08-12T23:13:45			
[s] Observation end time (MET)	208762884.184000	208763726.51742			
Observation end date	2004-08-13T05:40:20	2004-08-13T05:55:26			
Read mode	TIMED	TIMED			

2.3 Aspect

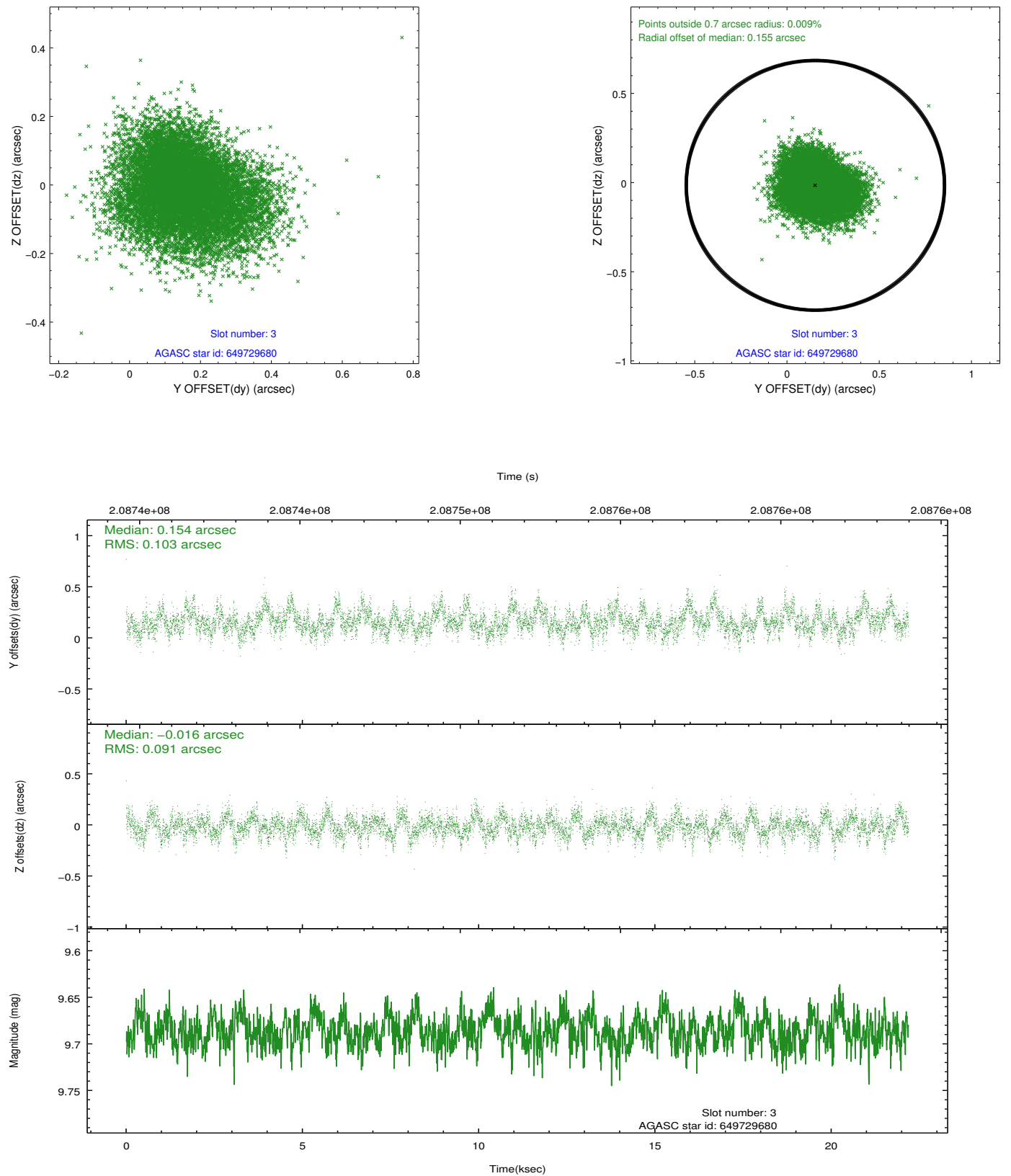


Slot Statistics

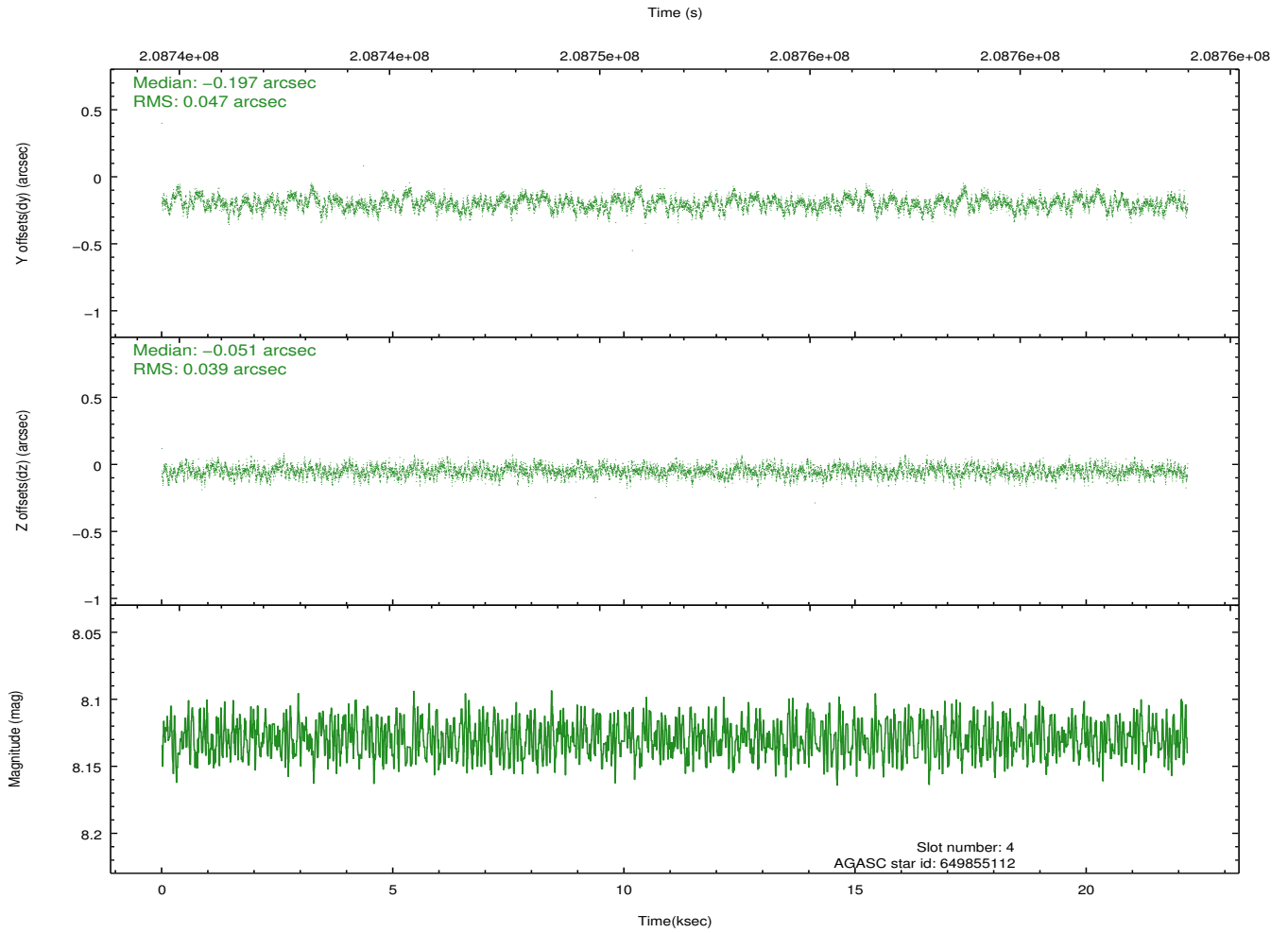
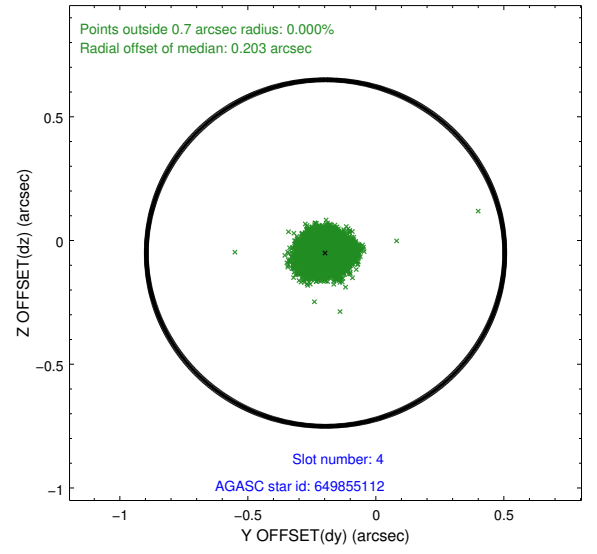
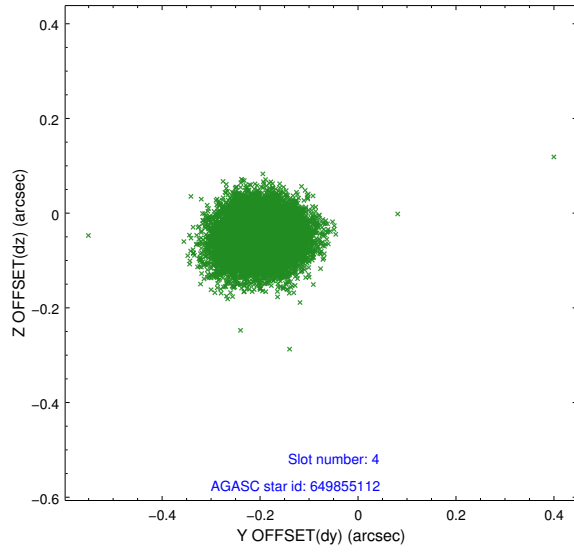
slot	status	id	mag	n_pts	med_dy	med_dz	dr1	dr2	ra	dec	mean_y	mean_z
0	FID	ACIS-I-1	7.24	5413	0.042	-0.017	0.007	0.013	0.000000	0.000000	932.47	-835.10
1	FID	ACIS-I-5	7.23	5413	-0.164	0.059	0.007	0.012	0.000000	0.000000	-1815.71	1062.45
2	FID	ACIS-I-6	7.25	5412	0.031	0.028	0.008	0.013	0.000000	0.000000	397.90	1707.05
3	GUIDE	649729680	9.69	10816	0.154	-0.016	0.147	0.236	197.477731	-1.403690	2128.31	-1375.91
4	GUIDE	649855112	8.13	10822	-0.197	-0.051	0.065	0.104	197.679794	-0.418807	-1466.95	-1795.82
5	GUIDE	649856976	9.84	10821	0.131	0.160	0.100	0.161	197.988518	-1.476151	1800.25	451.60
6	GUIDE	649858864	9.64	10815	-0.008	0.005	0.115	0.185	197.684428	-0.695156	-527.13	-1468.78
7	GUIDE	649860032	8.92	10815	-0.084	-0.104	0.109	0.170	197.517008	-0.616758	-606.69	-2129.45

2.4 Star Slots

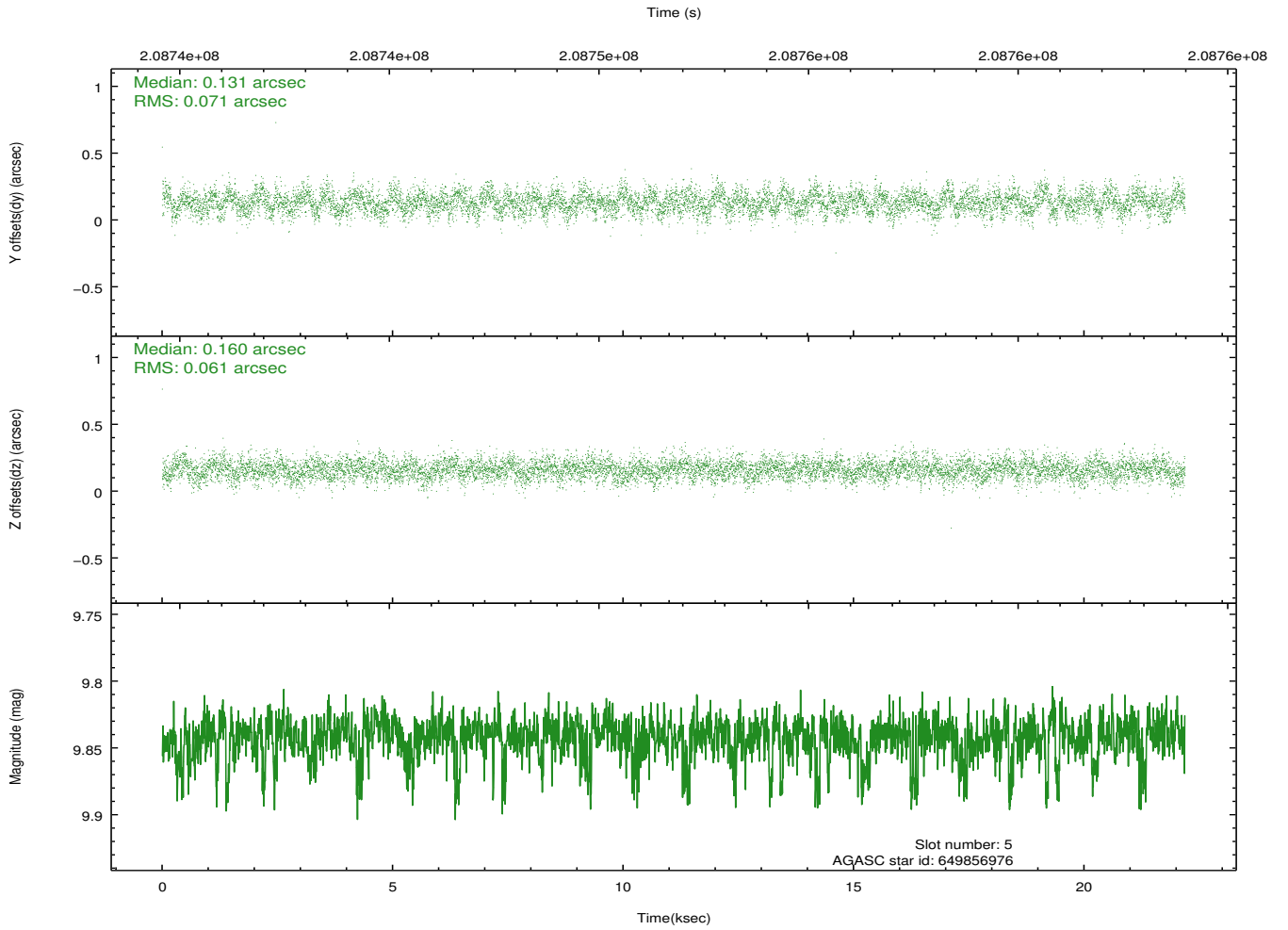
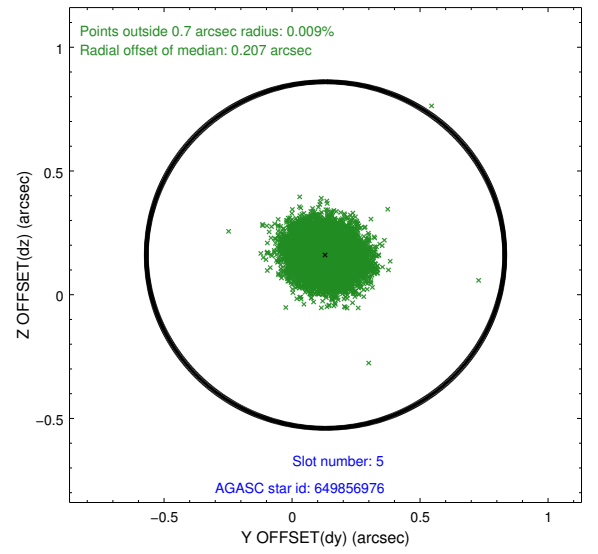
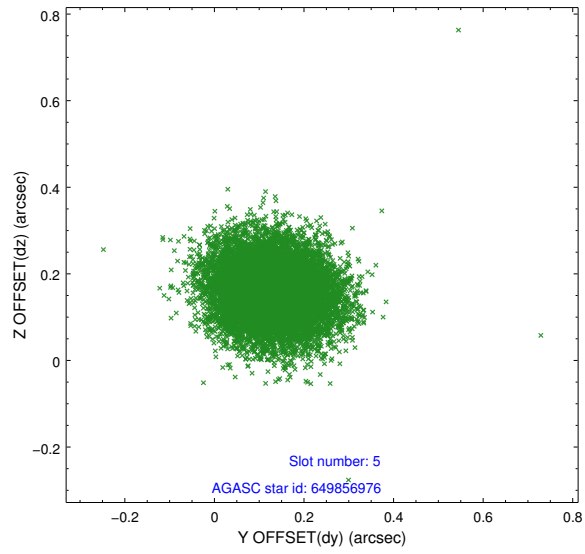
2.4.1 Slot 3



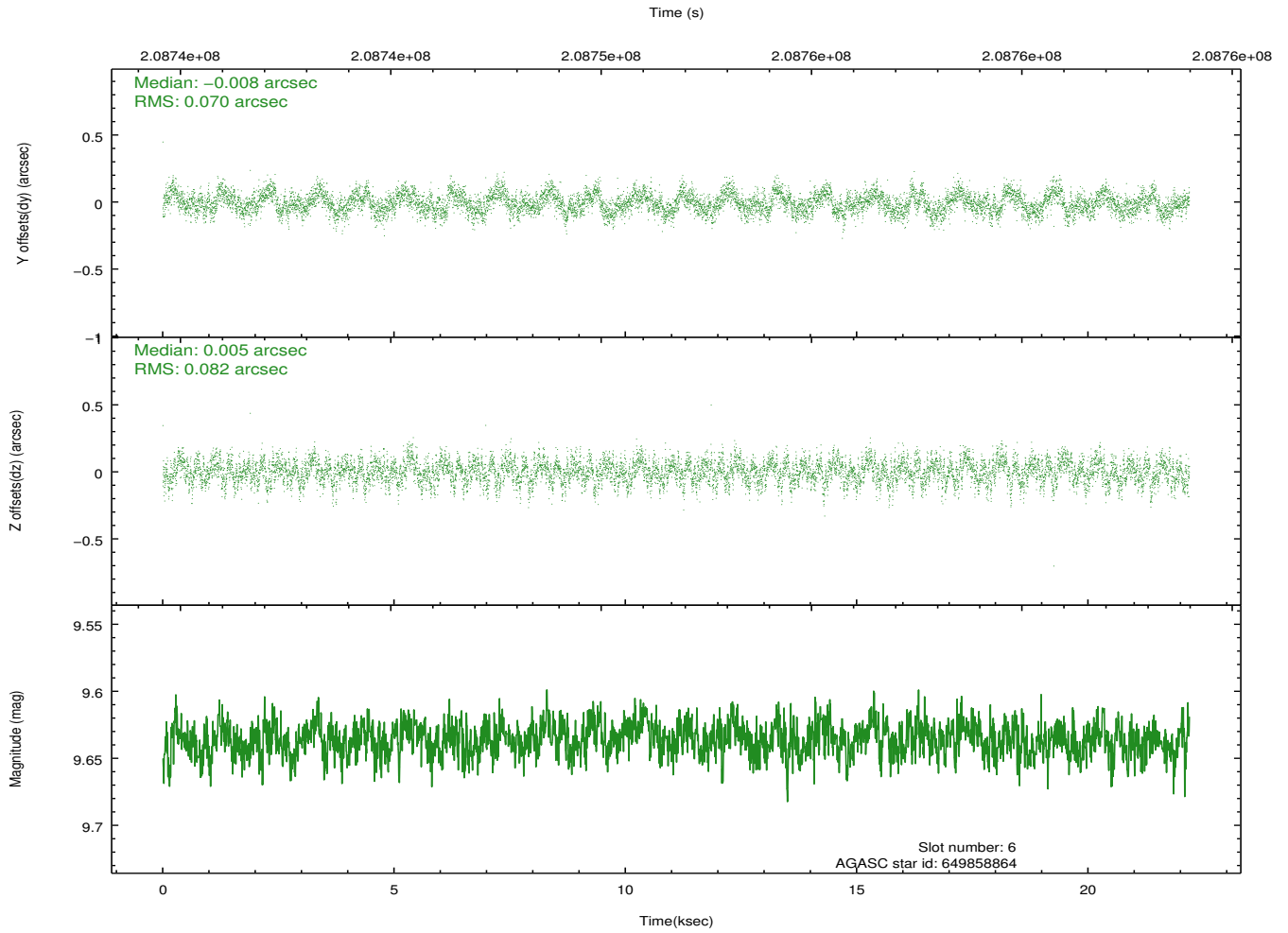
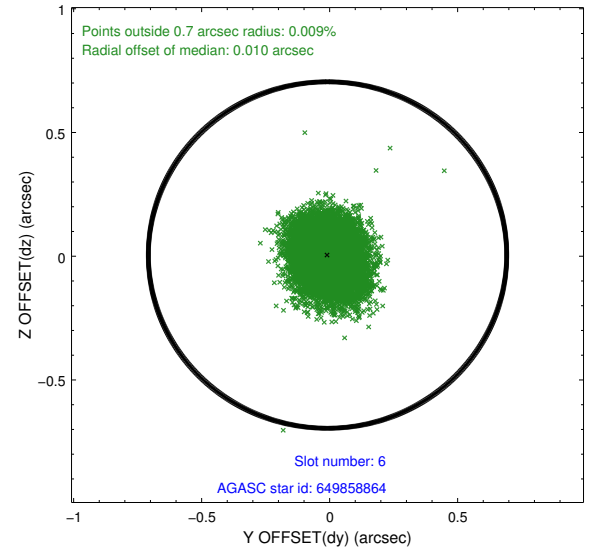
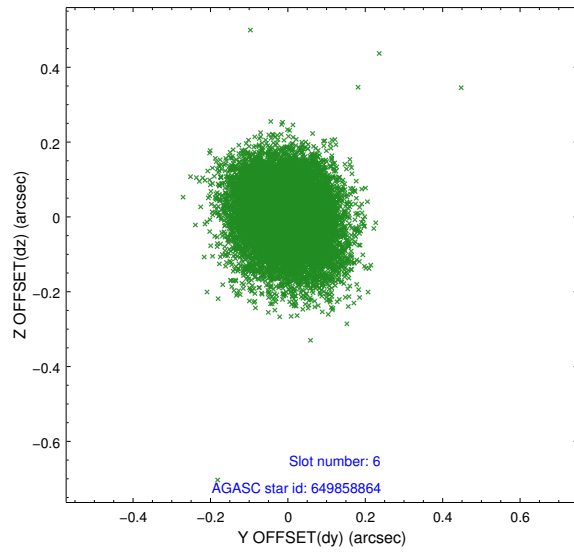
2.4.2 Slot 4



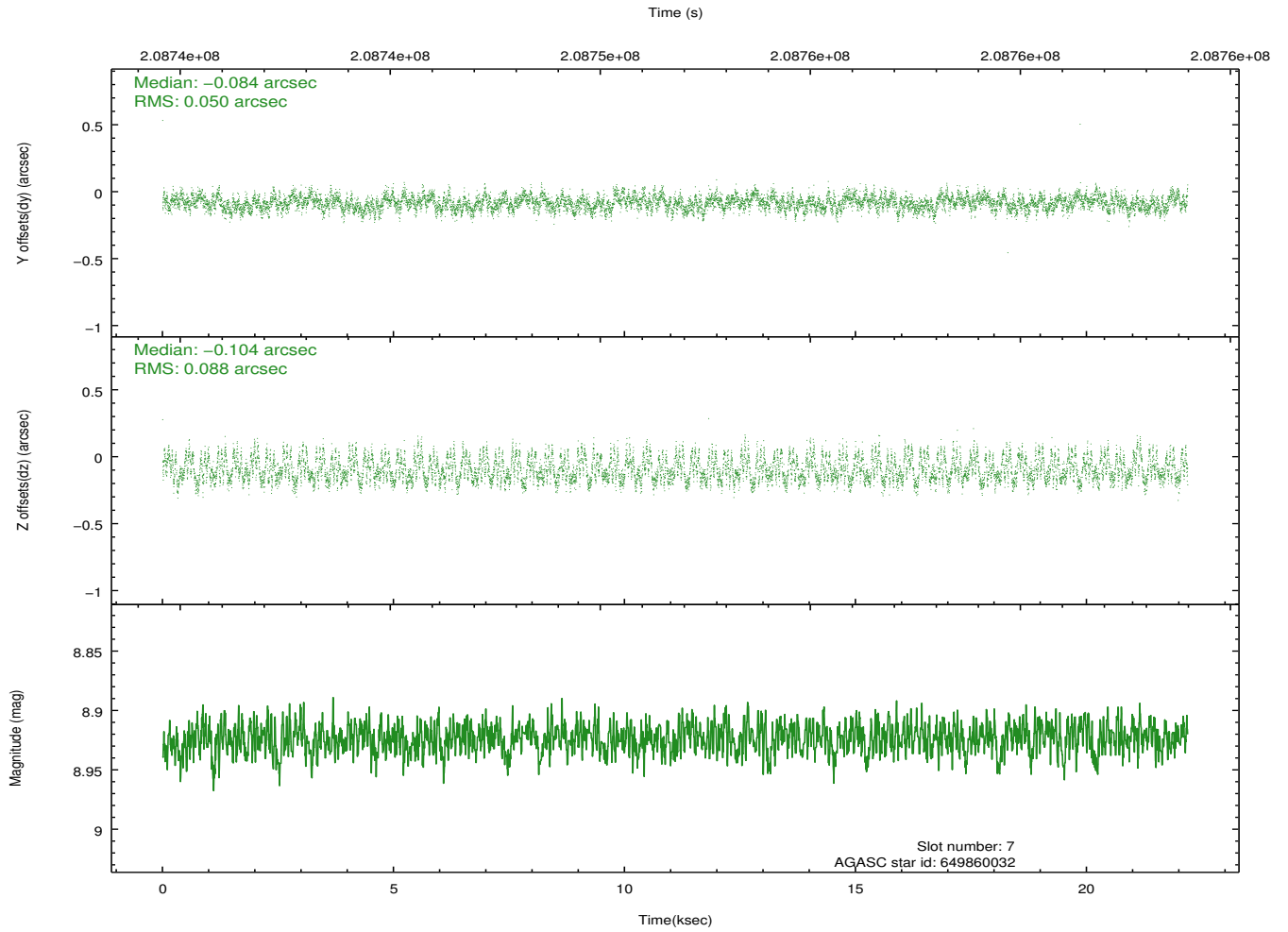
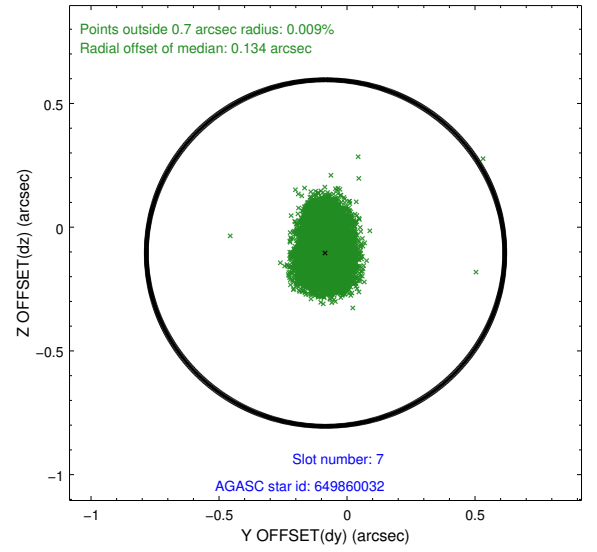
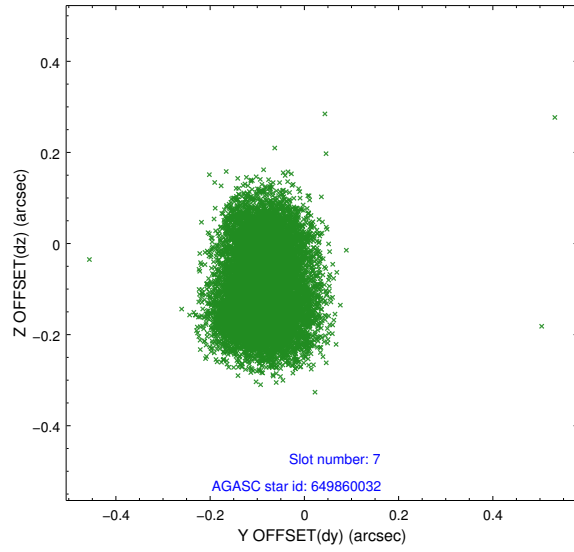
2.4.3 Slot 5



2.4.4 Slot 6

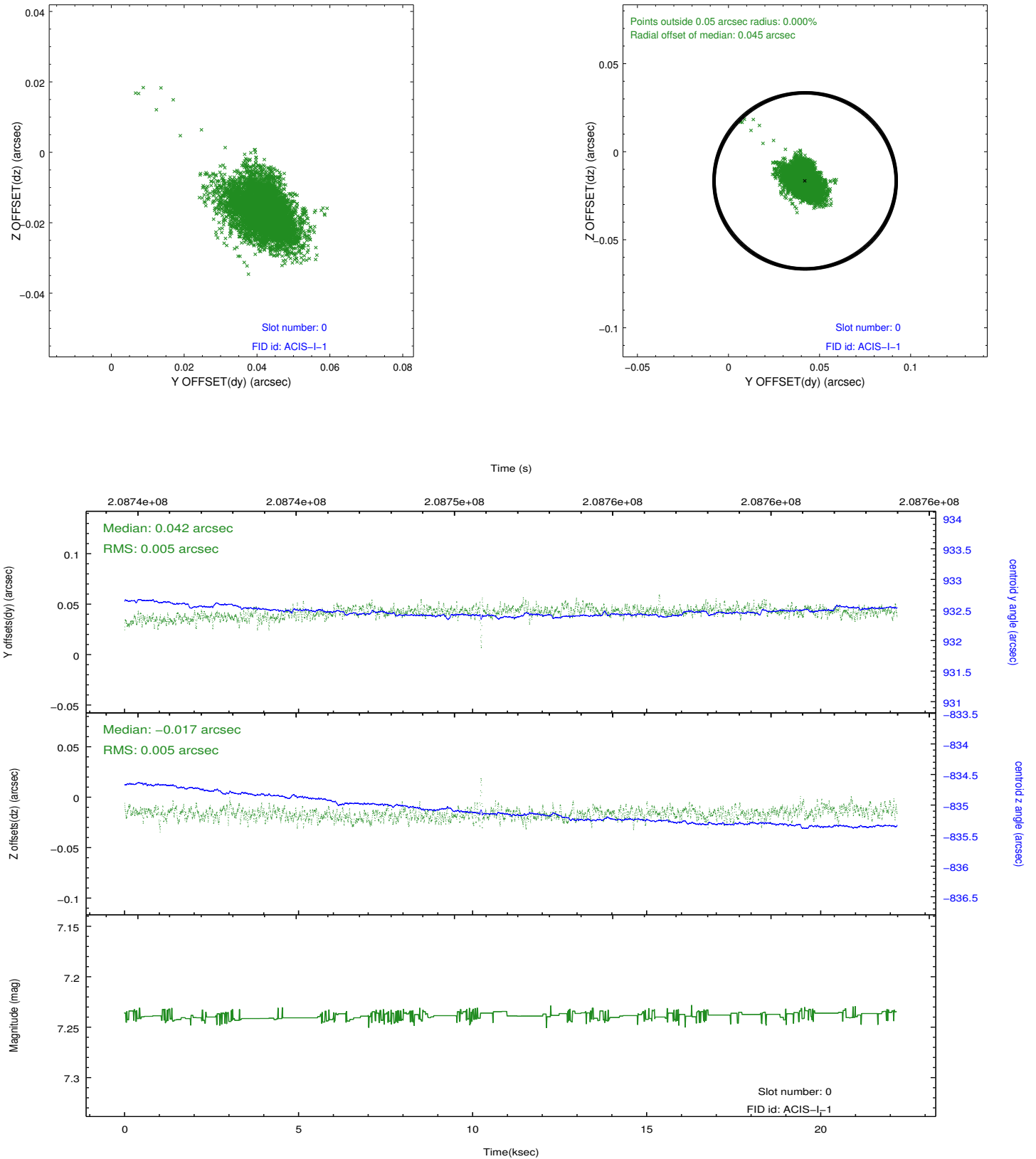


2.4.5 Slot 7

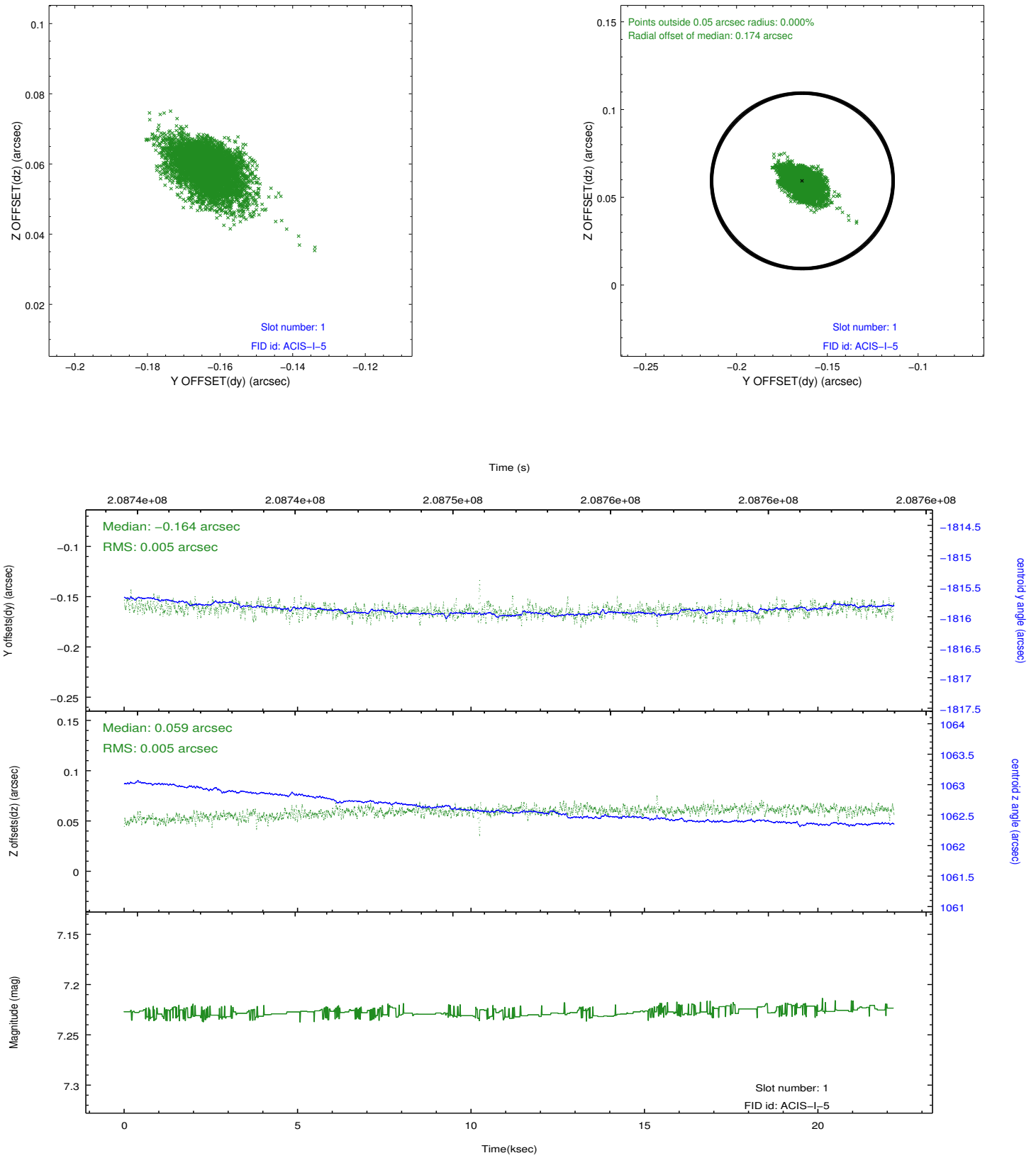


2.5 FID Slots

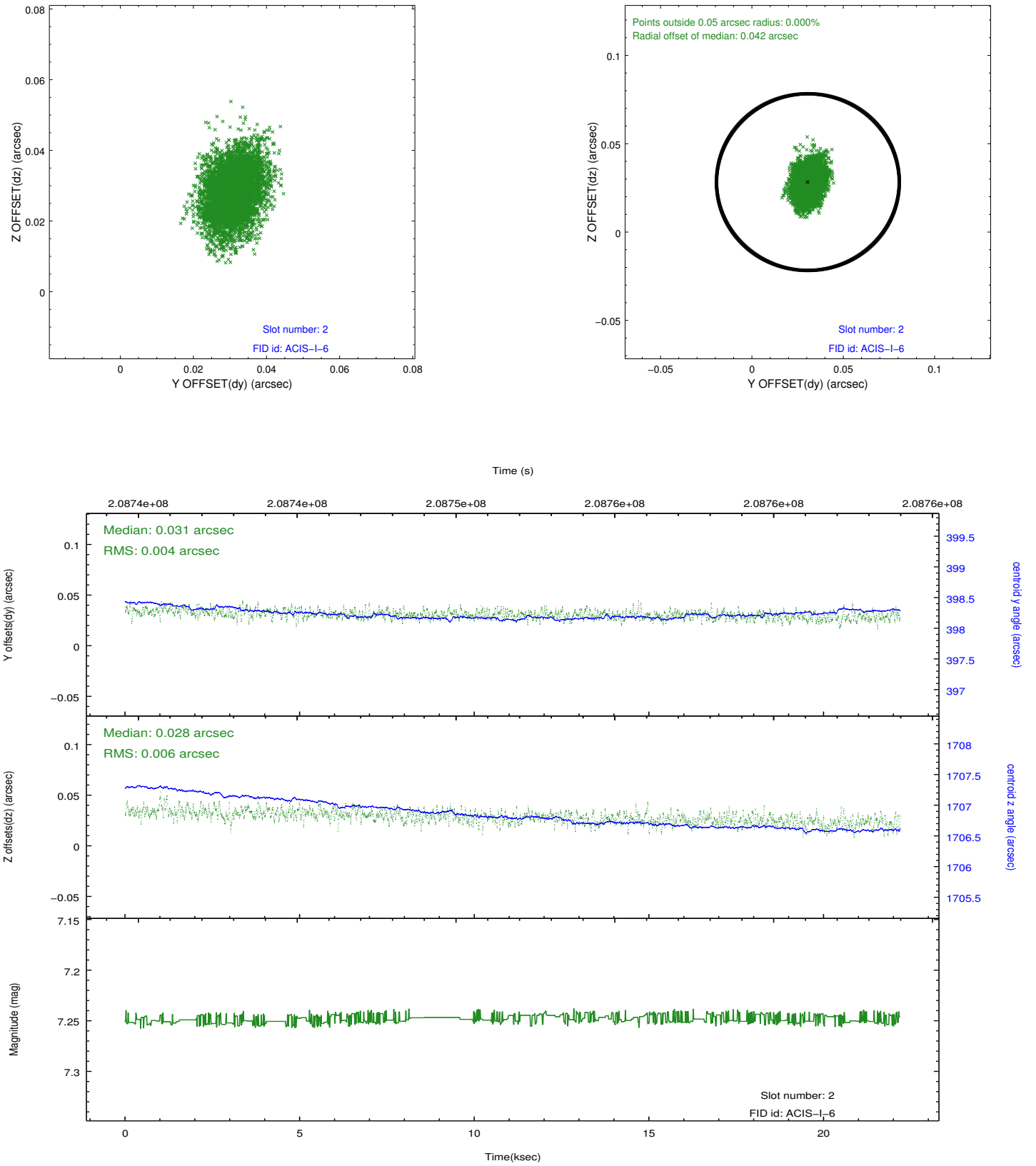
2.5.1 Slot 0



2.5.2 Slot 1



2.5.3 Slot 2



A Summary

A.1 Status

V&V Scientist	Jen Lauer
V&V Date (YYYY-MM-DD)	2012.12.21
V&V Edition	1
V&V Disposition and Status	OK
V&V Charge Time	21.768

A.2 Comments