

V&V Reference Report

L2 ASCDS Version : 8.5

Observation 4976 - L2 Version 3
Chandra X-Ray Center

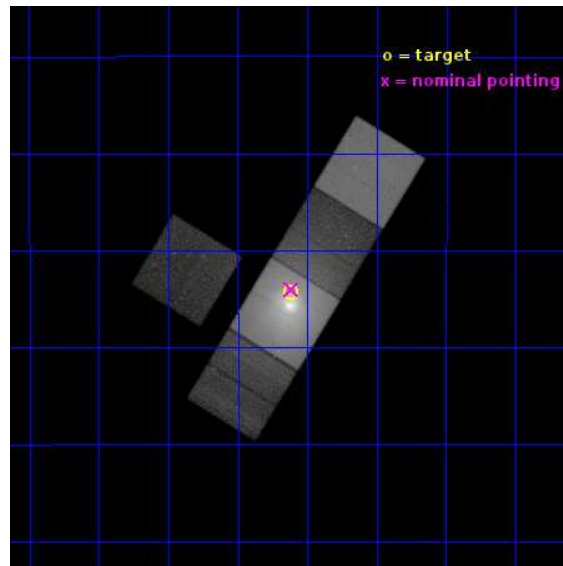
L2 Processing Date : Dec 6 2012

Contents

1	Front	2
2	OBI	3
2.1	OBI	3
2.1.1	Images	3
2.1.2	Bias	3
2.1.3	Parameters	4
2.1.4	Events	4
2.2	Compared Parameters	5
2.3	Aspect	6
2.4	Star Slots	9
2.4.1	Slot 3	9
2.4.2	Slot 4	10
2.4.3	Slot 5	11
2.4.4	Slot 6	12
2.4.5	Slot 7	13
2.5	FID Slots	14
2.5.1	Slot 0	14
2.5.2	Slot 1	15
2.5.3	Slot 2	16
A	Summary	17
A.1	Status	17
A.2	Comments	17

1 Front

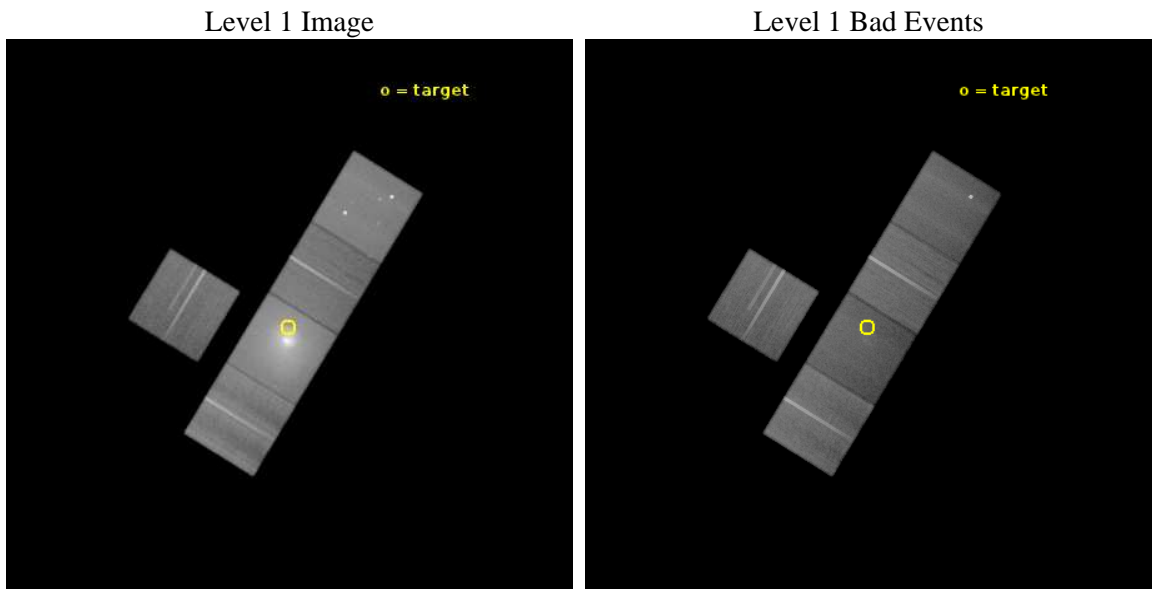
seq_num	800421	Sequence number
obs_id	4976	Observation id
title	The Nature of Cold Fronts in Galaxy Clusters	Proposal title
observer	Dr renato dupke	Principal investigator
object	Abell 496	Source name
dtcycle	0	
cycle	P	events from which exps? Prim/Second/Both
ra_targ	68.404167	Observer's specified target RA [deg]
dec_targ	-13.238056	Observer's specified target Dec [deg]
ra_nom	68.403485711644	Nominal RA [deg]
dec_nom	-13.233737722029	Nominal Dec [deg]
roll_nom	121.44313386328	Nominal Roll [deg]
revision	3	Processing version of data
ontime	76077.099853694	Sum of GTIs [s]
livetime	75083.09653696	Livetime [s]
ontime3	74447.524239361	Sum of GTIs [s]
ontime5	76077.099853694	Sum of GTIs [s]
ontime6	74607.673160195	Sum of GTIs [s]
ontime7	76077.099853694	Sum of GTIs [s]
ontime8	74691.929867625	Sum of GTIs [s]
l2events	1835239	Number of level 2 events



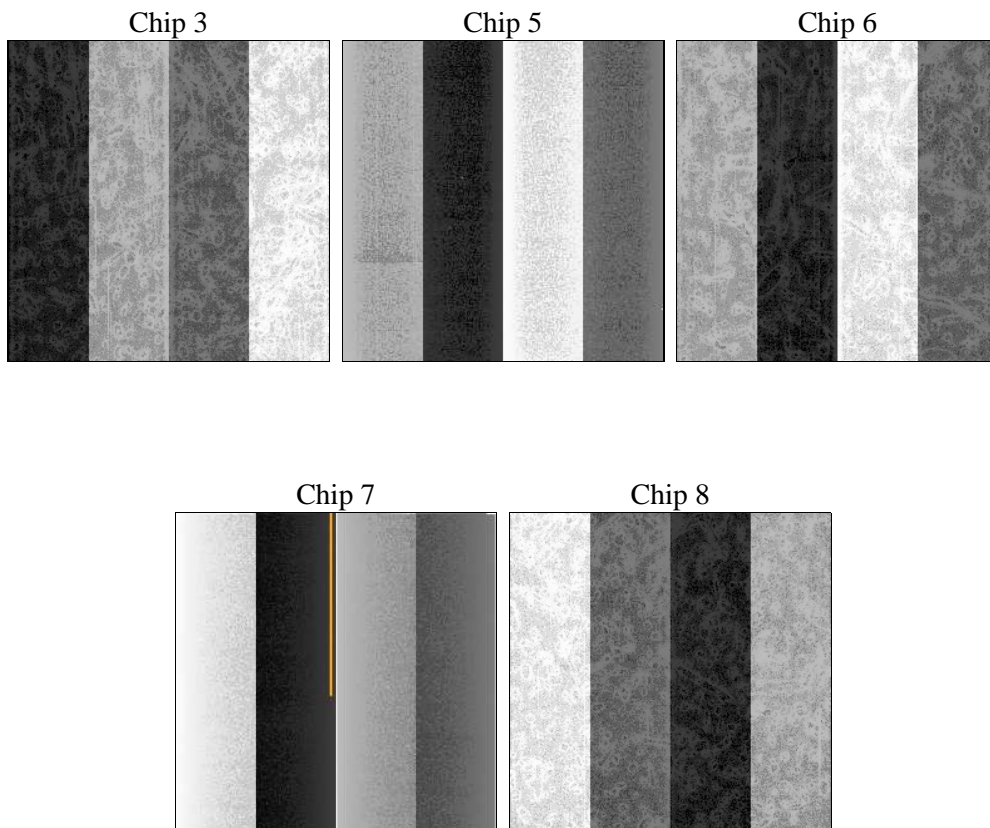
2 OBI

2.1 OBI

2.1.1 Images



2.1.2 Bias



2.1.3 Parameters

obi_num	0	Obi number	sched_exp_time	75954.225000	[s] Scheduled observation exposure time
ascdsver	8.5	Processing system revision	ontime	76077.099853694	Sum of GTIs [s]
caldbver	4.5.4	 	ontime3	74447.524239361	Sum of GTIs [s]
date	2012-12-06T14:45:20	Date and time of file creation	ontime5	76077.099853694	Sum of GTIs [s]
revision	3	Processing version of data	ontime6	74607.673160195	Sum of GTIs [s]
			ontime7	76077.099853694	Sum of GTIs [s]
			ontime8	74691.929867625	Sum of GTIs [s]
			l1events	3879375	Number of level 1 events

2.1.4 Events

	ccd 3	ccd 5	ccd 6	ccd 7	ccd 8
level 1 events	478744	757366	581151	1377260	684854
rejected events	400825	322915	415574	273328	434475
rejected %	83%	42%	71%	19%	63%

	ccd 3	ccd 5	ccd 6	ccd 7	ccd 8
grade 0 events	41825	57068	111171	265512	112634
	8%	7%	19%	19%	16%
grade 1 events	348	617	592	708	786
	0%	0%	0%	0%	0%
grade 2 events	13132	128609	22057	267278	40530
	2%	16%	3%	19%	5%
grade 3 events	6154	22954	8821	119842	26965
	1%	3%	1%	8%	3%
grade 4 events	6174	21077	8757	118336	24709
	1%	2%	1%	8%	3%
grade 5 events	16530	54398	17338	57547	25310
	3%	7%	2%	4%	3%
grade 6 events	10656	204817	14793	333056	45541
	2%	27%	2%	24%	6%
grade 7 events	383925	267826	397622	214981	408379
	80%	35%	68%	15%	59%

2.2 Compared Parameters

Parameter	Planned	Actual	Parameter	Planned	Actual
Instrument	ACIS	ACIS	Obspar format version number	7	7
Detector	ACIS-35678	ACIS-35678	Obspar file type	PREDICTED	ACTUAL
Grating	NONE	NONE	Obspar update status	NONE	UPDATED
Data mode	VFAINT	VFAINT	Number of optional ACIS chips dropped	0	0
Observation mode	POINTING	POINTING	On-chip summing requested	N	N
[deg] Pointing RA	68.428235	68.40348571164408	Subarray requested	NONE	NONE
[deg] Pointing Dec	-13.246446	-13.23373772202916	Alternating exposures requested	N	N
[deg] Pointing Roll	121.292175	121.4431338632794	[s] Primary exposure time	0.000000	3.1
[mm] SIM focus pos	-0.684267	-0.6828225247311905			
[mm] SIM defocus	0	0.001444936568705701			
[mm] SIM translation stage pos	-192.132523	-192.1314037687074			
[mm] SIM translation stage offset	2	1.998881185699588			
[s] Observation start time (MET)	206904173.184000	206903199.73469			
Observation start date	2004-07-22T17:21:49	2004-07-22T17:06:39			
[s] Observation end time (MET)	206980127.184000	206980343.28812			
Observation end date	2004-07-23T14:27:43	2004-07-23T14:32:23			
Read mode	TIMED	TIMED			

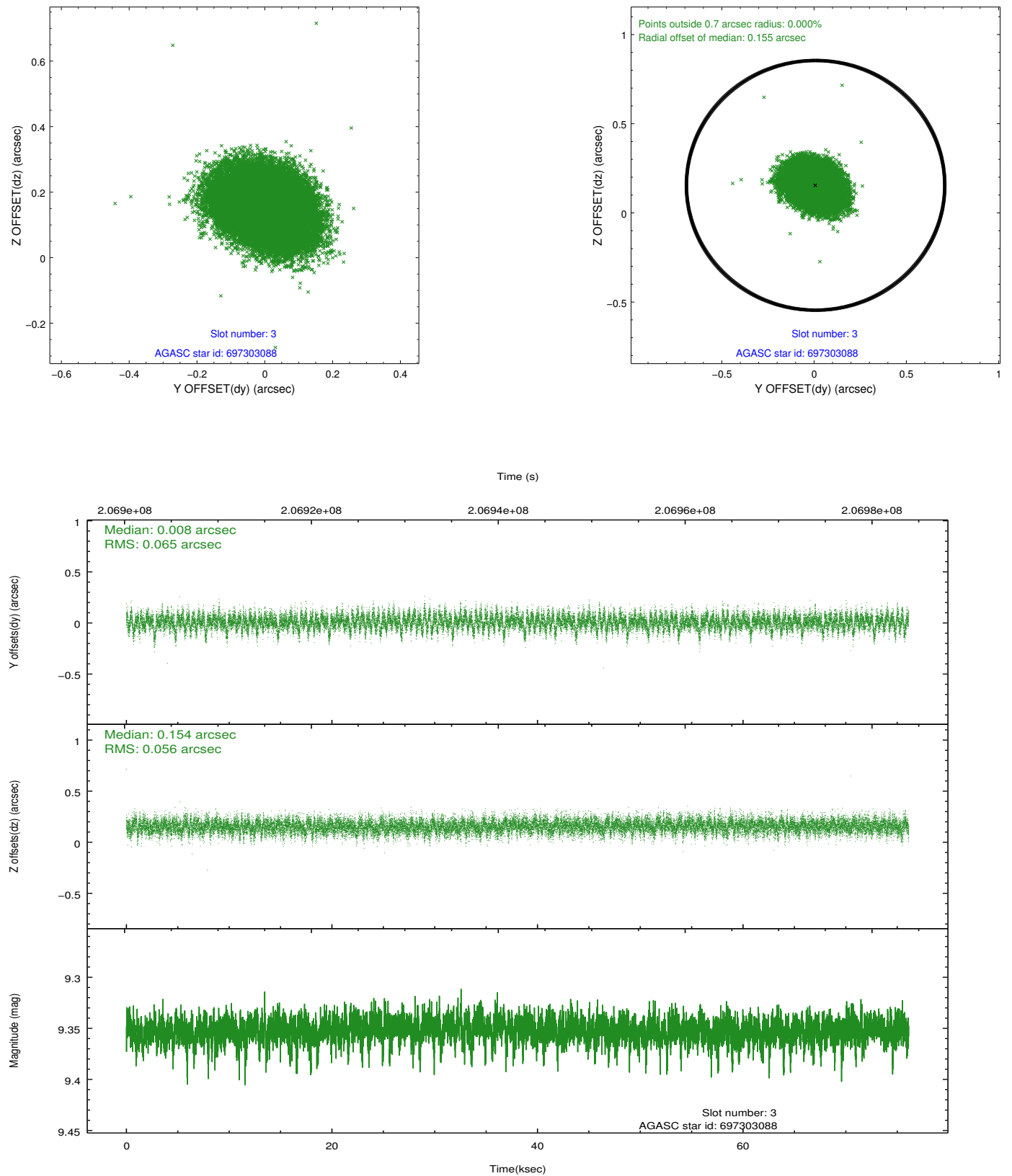
2.3 Aspect

Slot Statistics

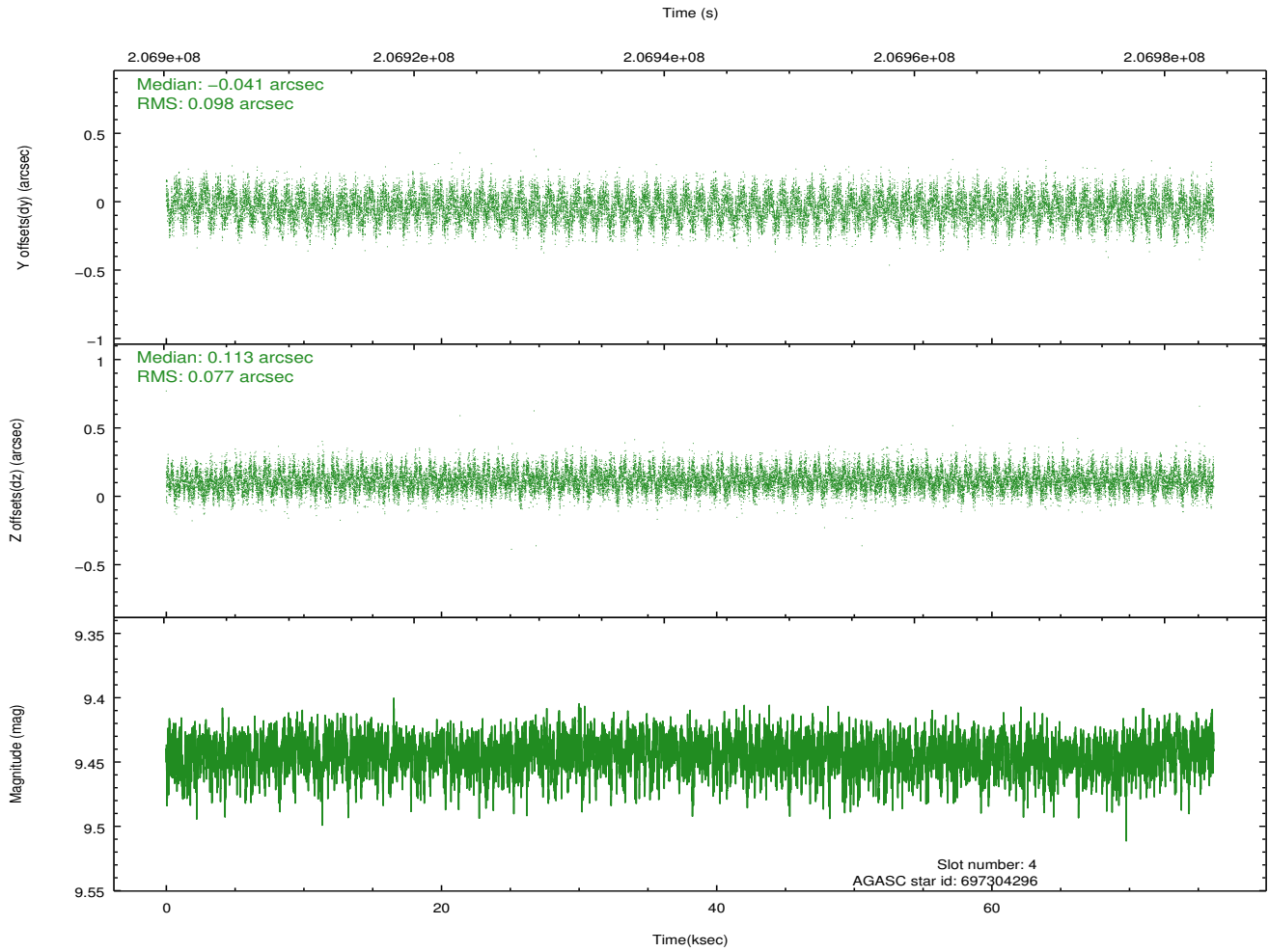
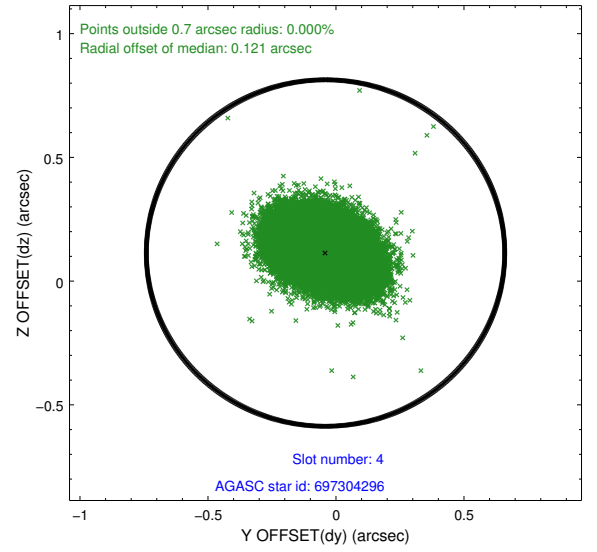
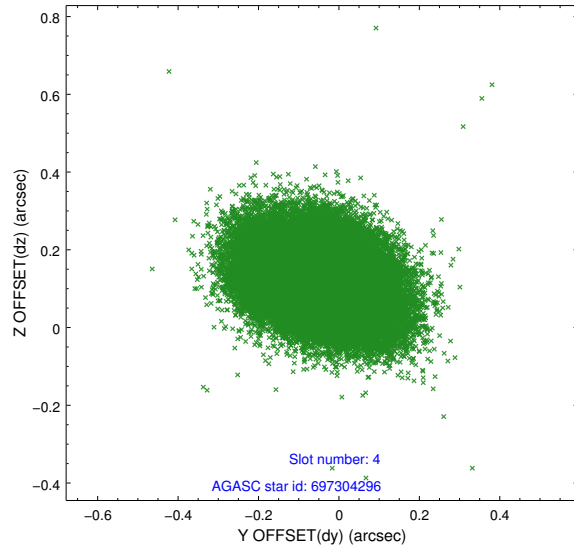
slot	status	id	mag	n_pts	med_dy	med_dz	dr1	dr2	ra	dec	mean_y	mean_z
0	FID	ACIS-S-2	7.10	18569	-0.034	-0.012	0.008	0.021	0.000000	0.000000	-759.89	-1691.70
1	FID	ACIS-S-4	7.20	18566	0.071	0.020	0.008	0.024	0.000000	0.000000	2153.52	216.89
2	FID	ACIS-S-5	7.22	18569	-0.068	0.002	0.008	0.028	0.000000	0.000000	-1812.85	210.47
3	GUIDE	697303088	9.35	37108	0.008	0.154	0.090	0.152	68.381419	-13.128687	447.78	-79.65
4	GUIDE	697304296	9.44	37095	-0.041	0.113	0.132	0.214	68.446705	-12.512422	2224.79	-1427.29
5	GUIDE	697311296	9.14	37114	-0.067	-0.230	0.103	0.160	67.817784	-13.358108	764.54	2037.00
6	GUIDE	697312112	9.61	37017	0.191	-0.165	0.115	0.181	68.203644	-13.816922	-1347.42	1737.19
7	GUIDE	697317744	8.90	37124	-0.086	0.122	0.073	0.118	68.814094	-12.965653	160.27	-1681.02

2.4 Star Slots

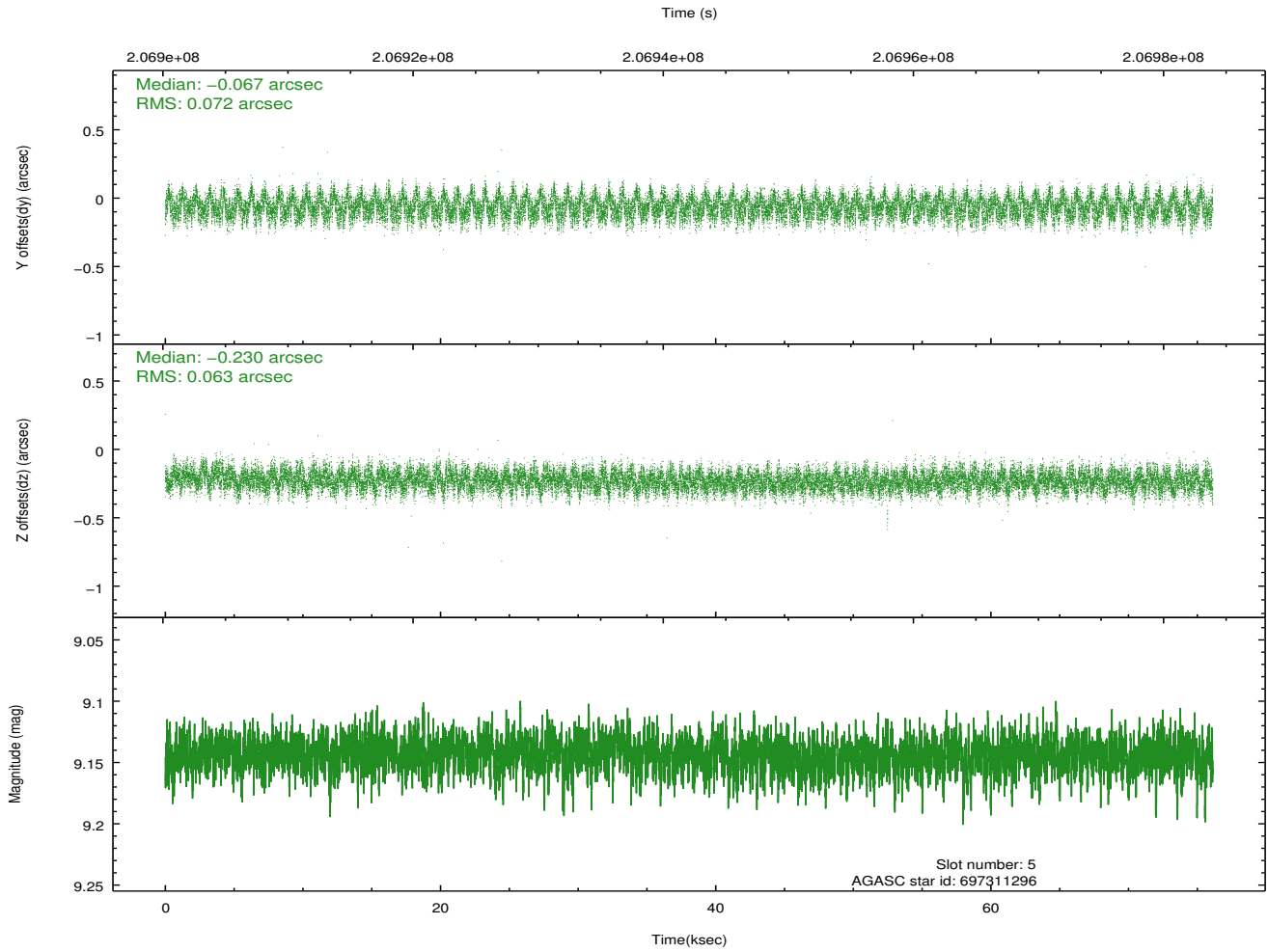
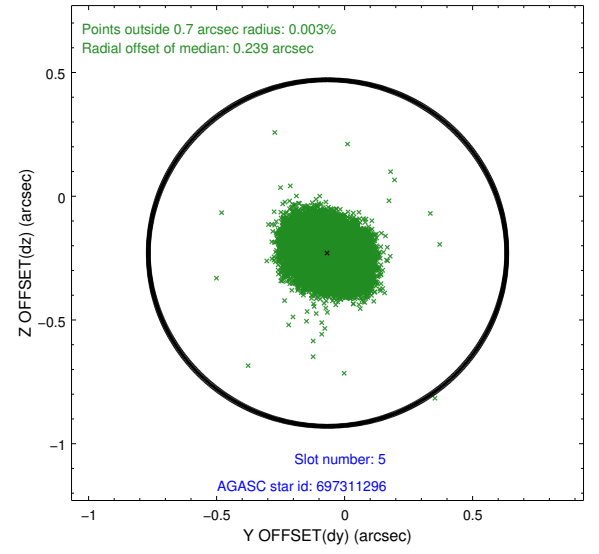
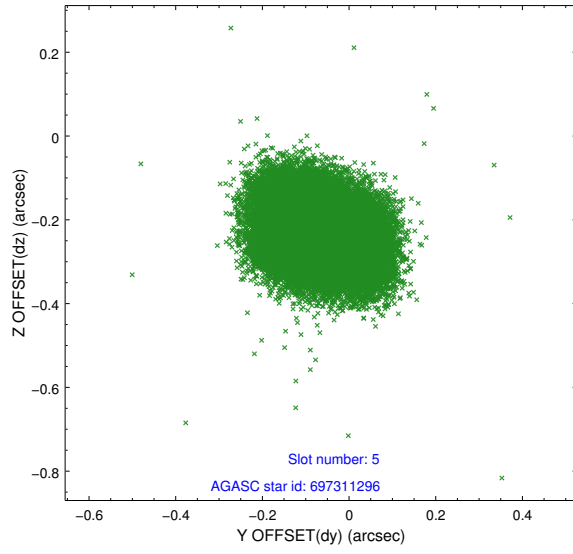
2.4.1 Slot 3



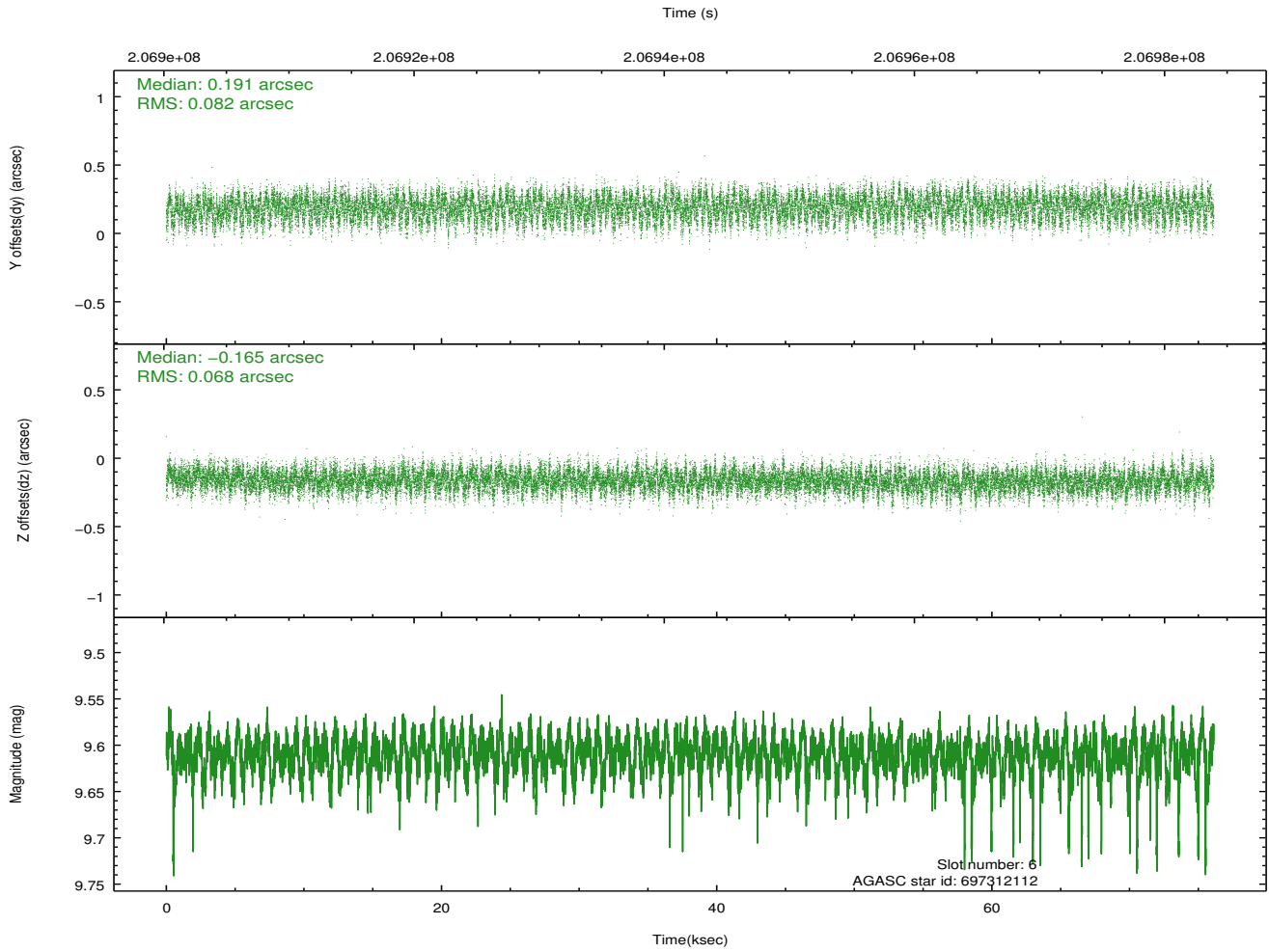
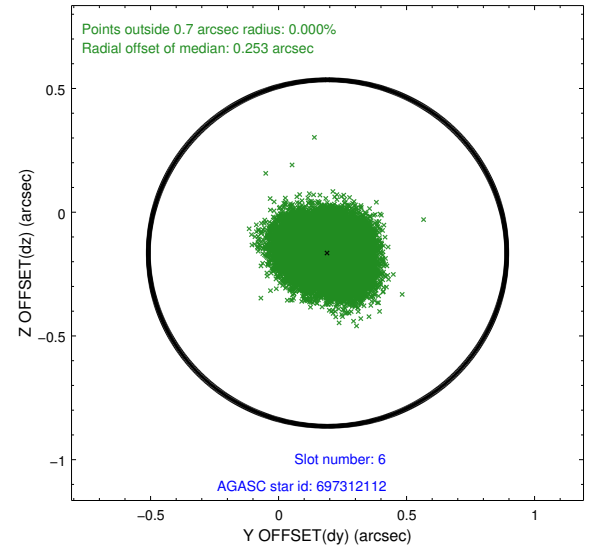
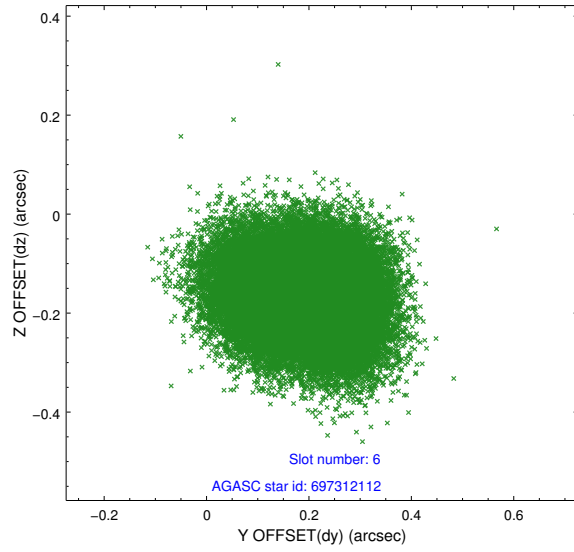
2.4.2 Slot 4



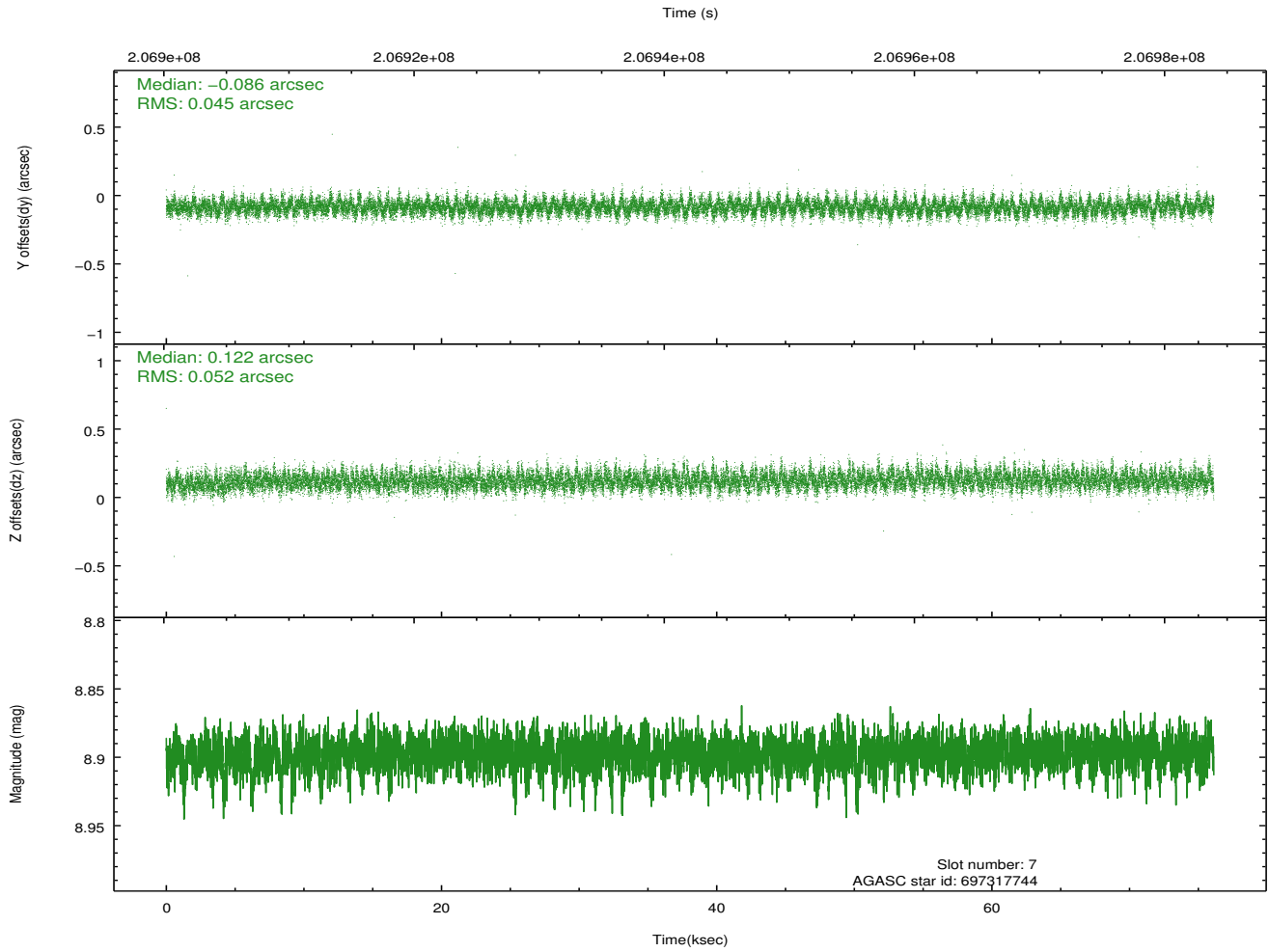
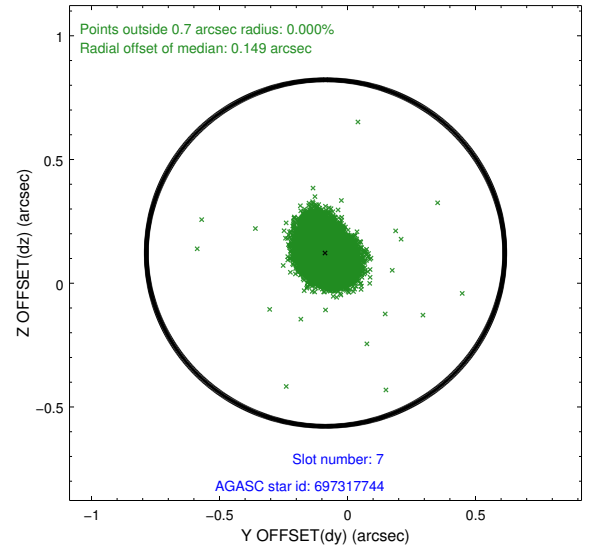
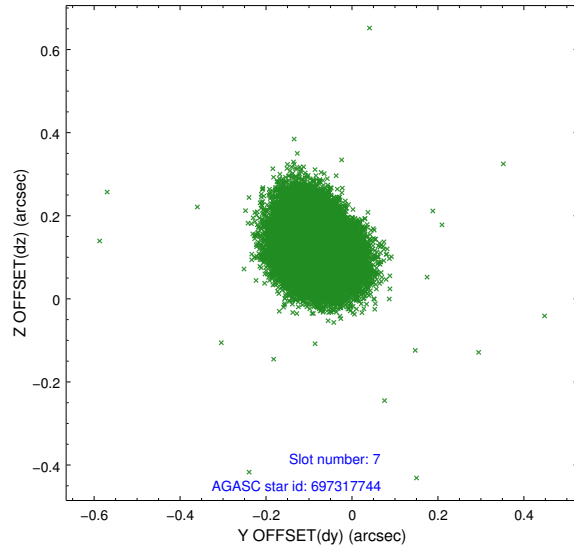
2.4.3 Slot 5



2.4.4 Slot 6

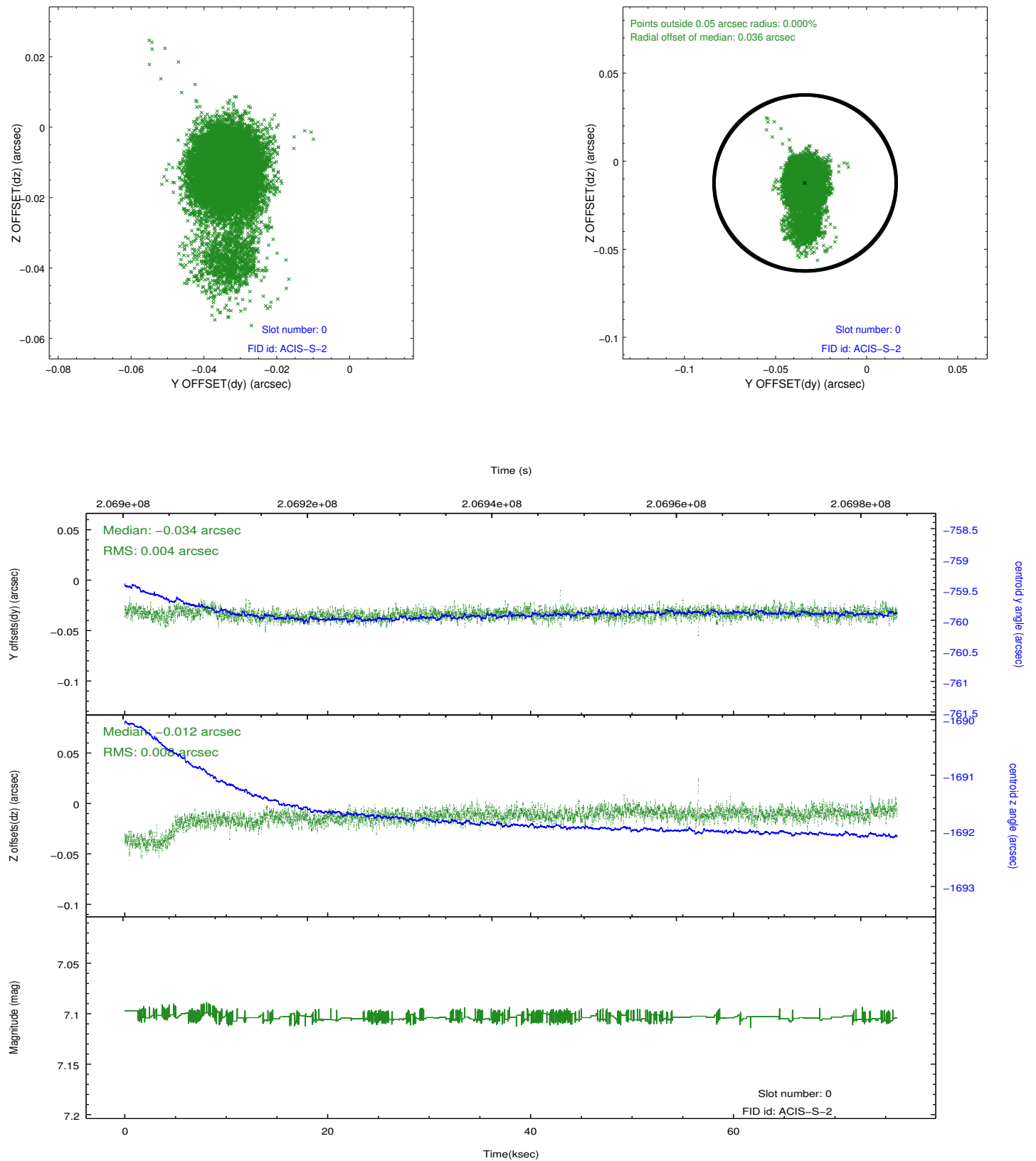


2.4.5 Slot 7

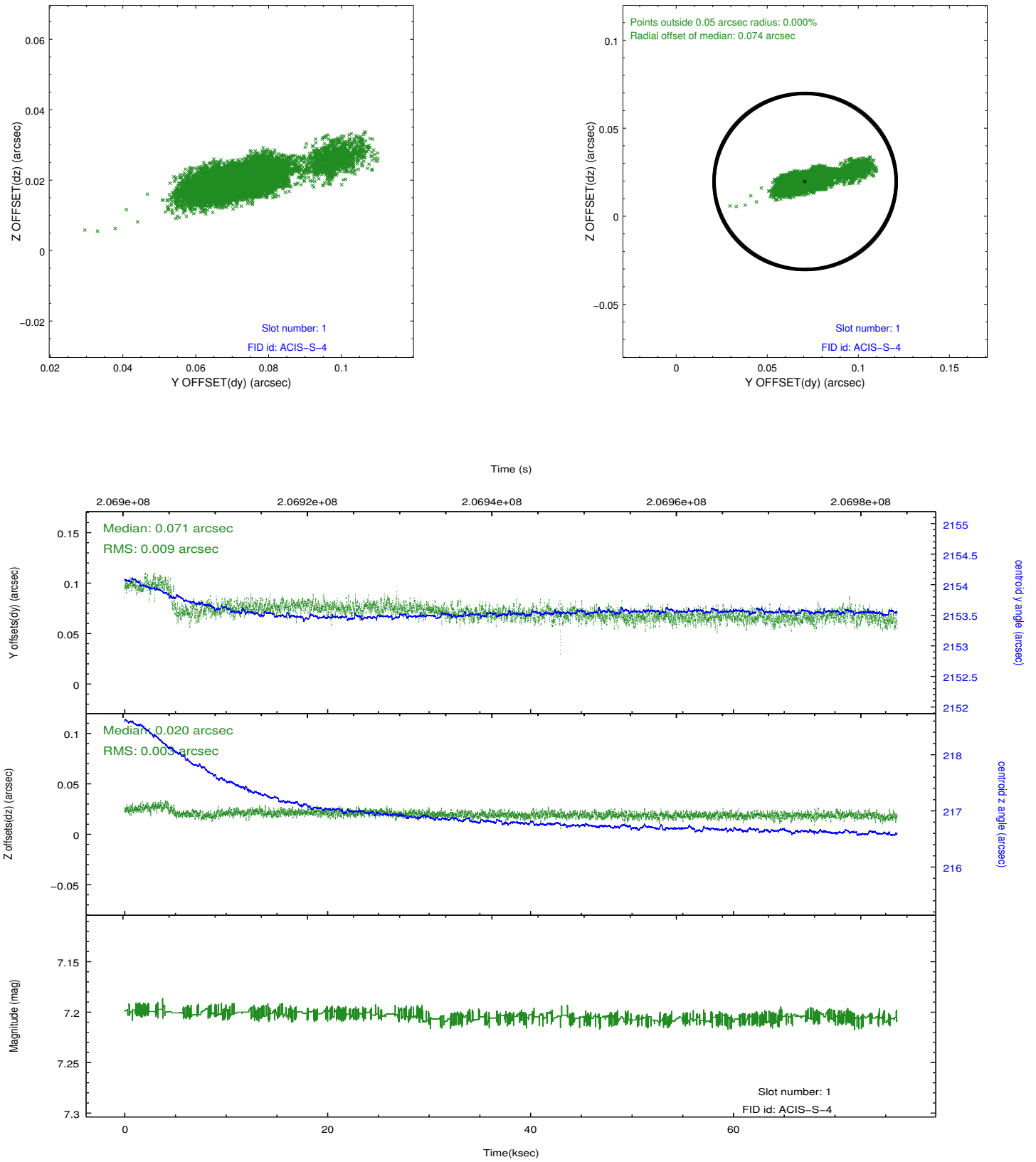


2.5 FID Slots

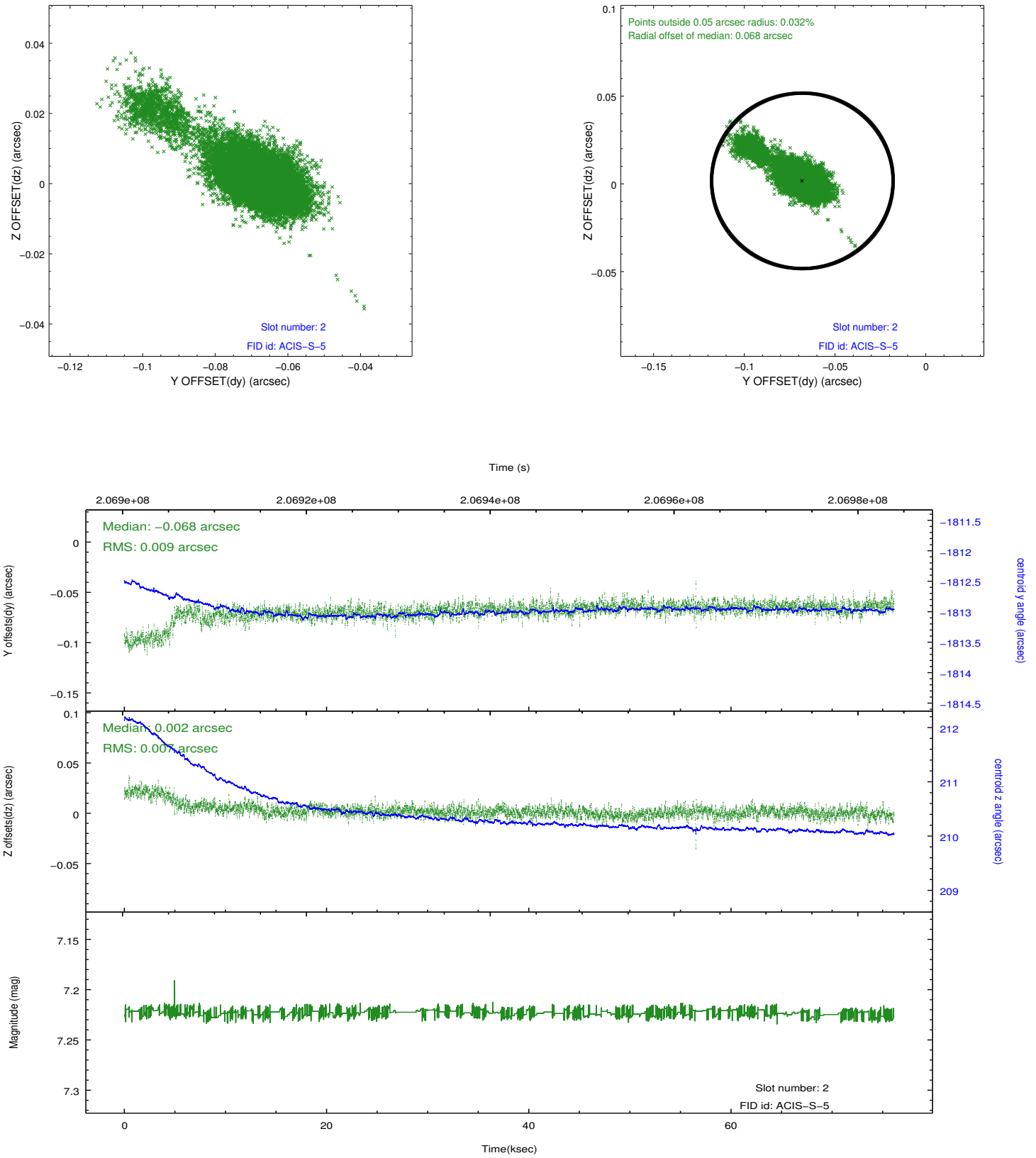
2.5.1 Slot 0



2.5.2 Slot 1



2.5.3 Slot 2



A Summary

A.1 Status

V&V Scientist	Jen Lauer
V&V Date (YYYY-MM-DD)	2012.12.20
V&V Edition	1
V&V Disposition and Status	OK
V&V Charge Time	76.077

A.2 Comments