

V&V Reference Report

L2 ASCDS Version : 8.5.1

Observation 4942 - L2 Version 3
Chandra X-Ray Center

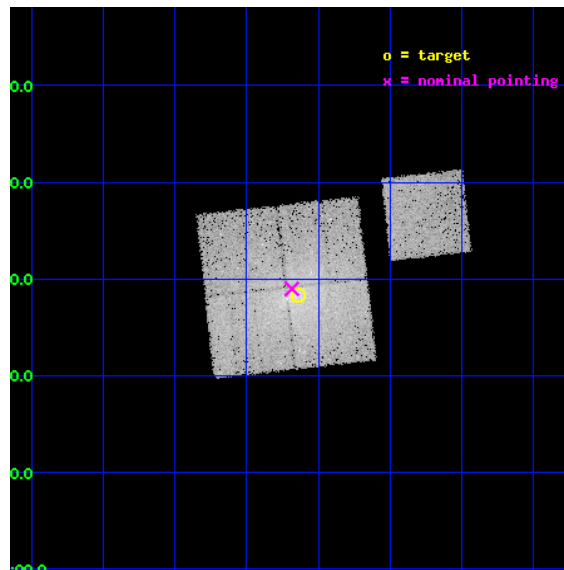
L2 Processing Date : Dec 18 2012

Contents

1	Front	2
2	OBI	3
2.1	OBI	3
2.1.1	Images	3
2.1.2	Bias	3
2.1.3	Parameters	4
2.1.4	Events	4
2.2	Compared Parameters	5
2.3	Aspect	6
2.4	Star Slots	9
2.4.1	Slot 3	9
2.4.2	Slot 4	10
2.4.3	Slot 5	11
2.4.4	Slot 6	12
2.4.5	Slot 7	13
2.5	FID Slots	14
2.5.1	Slot 0	14
2.5.2	Slot 1	15
2.5.3	Slot 2	16
A	Summary	17
A.1	Status	17
A.2	Comments	17

1 Front

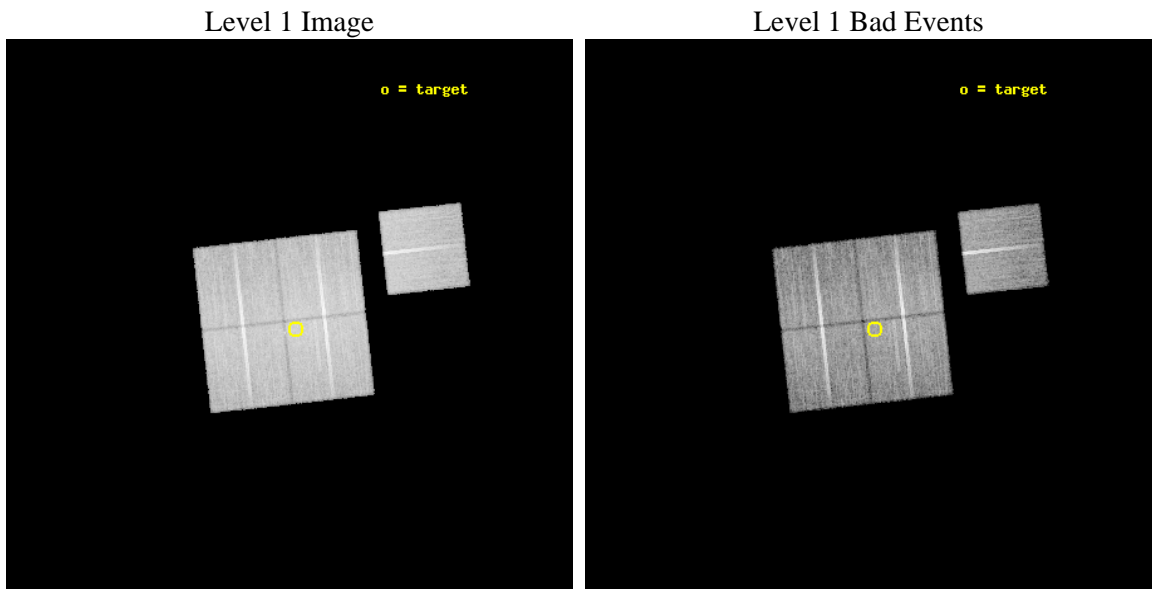
seq_num	800393	Sequence number
obs_id	4942	Observation id
title	THE HIFLUGCS CLUSTER SURVEY: A CORNERSTONE FOR COSMOLOGY	Proposal
observer	Dr. Thomas Reiprich	Principal investigator
object	MKW8	Source name
dtcycle	0	
cycle	P	events from which exps? Prim/Second/Both
ra_targ	220.159583	Observer's specified target RA [deg]
dec_targ	3.471722	Observer's specified target Dec [deg]
ra_nom	220.17109671158	Nominal RA [deg]
dec_nom	3.4831181043244	Nominal Dec [deg]
roll_nom	83.681834636047	Nominal Roll [deg]
revision	3	Processing version of data
ontime	23447.188491851	Sum of GTIs [s]
livetime	23140.833712636	Livetime [s]
ontime0	23453.347352326	Sum of GTIs [s]
ontime1	23450.247412086	Sum of GTIs [s]
ontime2	23450.288452089	Sum of GTIs [s]
ontime3	23447.188491851	Sum of GTIs [s]
ontime6	23453.306312323	Sum of GTIs [s]
l2events	95549	Number of level 2 events



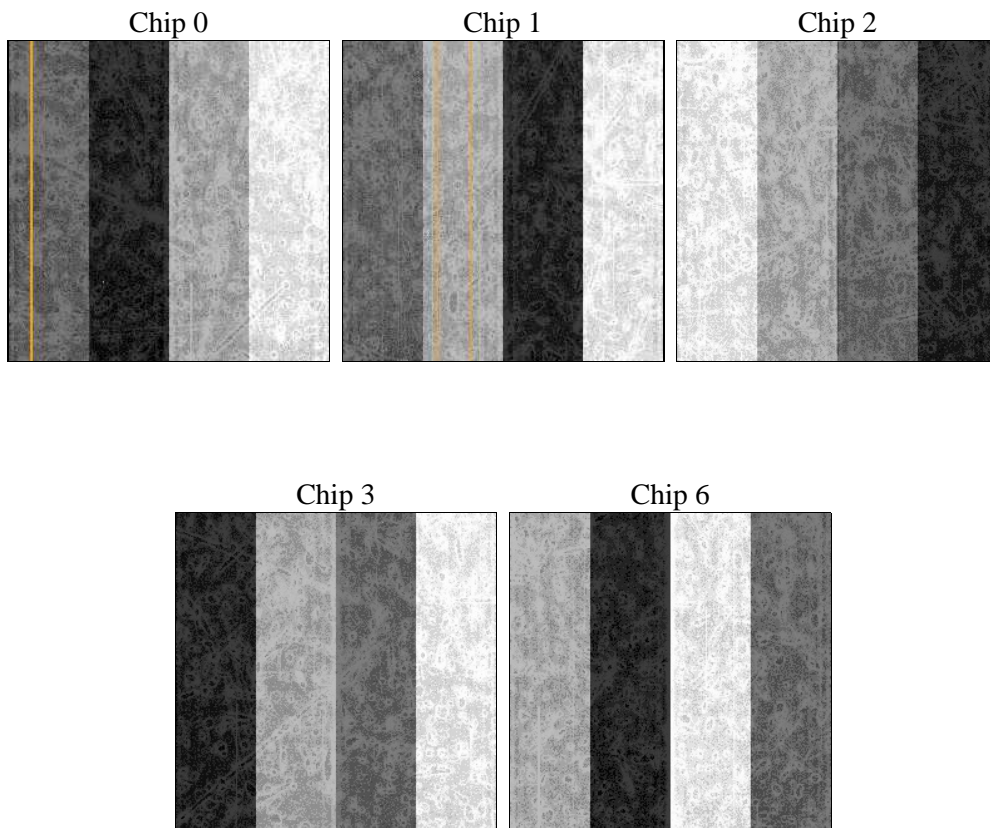
2 OBI

2.1 OBI

2.1.1 Images



2.1.2 Bias



2.1.3 Parameters

obi_num	1	Obi number	sched_exp_time	23400.000000	[s] Scheduled observation exposure time
ascdsver	8.5.1	Processing system revision	ontime	23447.188491851	Sum of GTIs [s]
caldsver	4.5.5	 	ontime0	23453.347352326	Sum of GTIs [s]
date	2012-12-18T06:03:04	Date and time of file creation	ontime1	23450.247412086	Sum of GTIs [s]
revision	3	Processing version of data	ontime2	23450.288452089	Sum of GTIs [s]
			ontime3	23447.188491851	Sum of GTIs [s]
			ontime6	23453.306312323	Sum of GTIs [s]
			l1events	752186	Number of level 1 events

2.1.4 Events

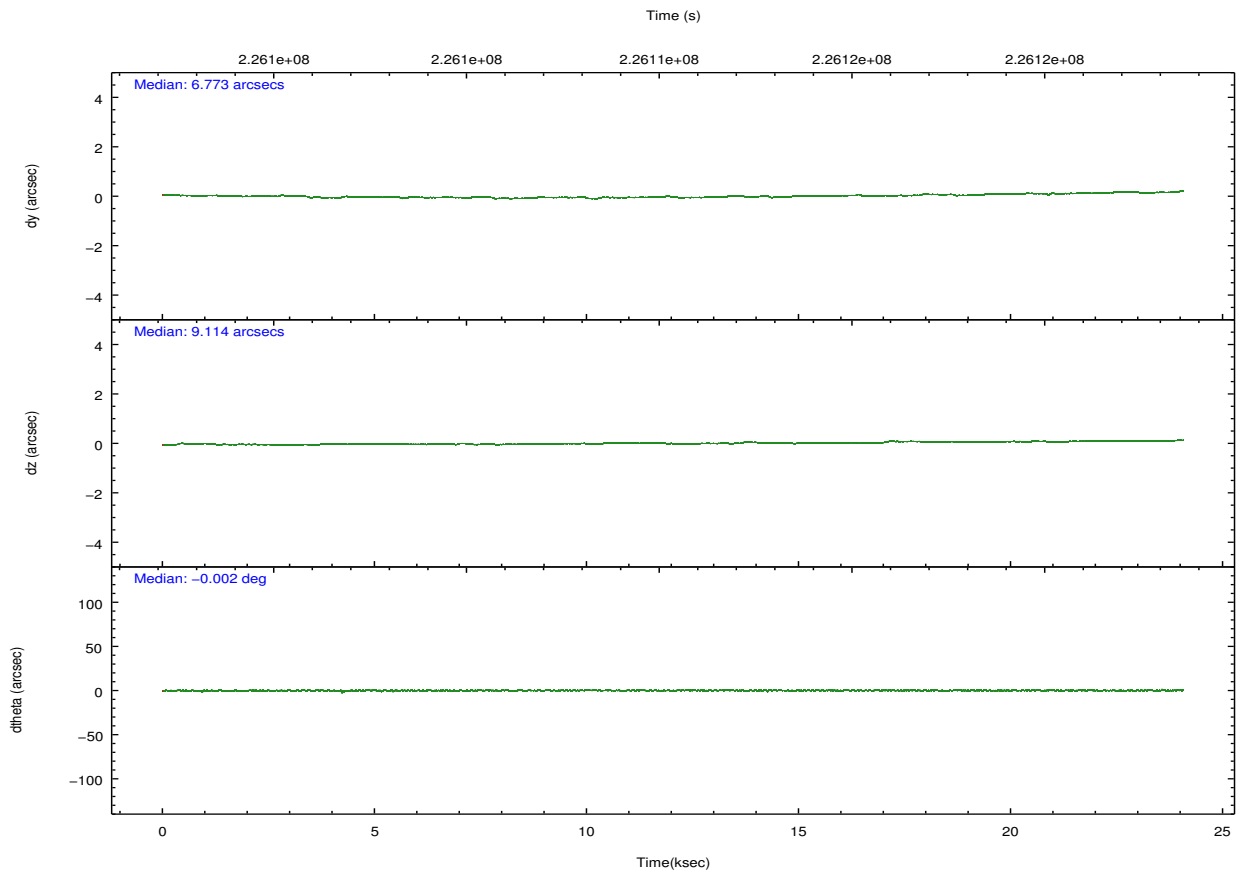
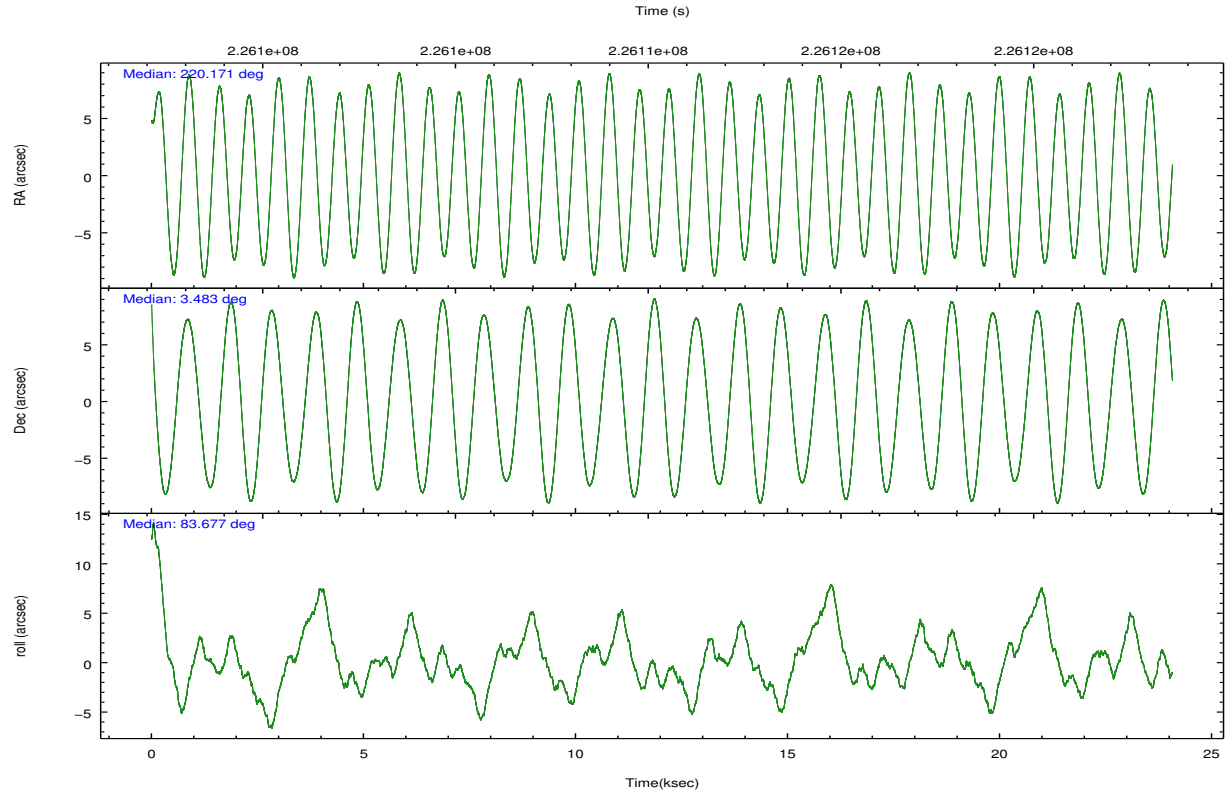
	ccd 0	ccd 1	ccd 2	ccd 3	ccd 6
level 1 events	138579	145725	161923	158381	147578
rejected events	119269	120163	139900	131385	131636
rejected %	86%	82%	86%	82%	89%

	ccd 0	ccd 1	ccd 2	ccd 3	ccd 6
grade 0 events	9149	13608	11586	15920	5967
	6%	9%	7%	10%	4%
grade 1 events	100	112	101	147	66
	0%	0%	0%	0%	0%
grade 2 events	3753	4335	3938	4222	3319
	2%	2%	2%	2%	2%
grade 3 events	1821	2060	1790	2010	1729
	1%	1%	1%	1%	1%
grade 4 events	1699	2016	1850	1904	1725
	1%	1%	1%	1%	1%
grade 5 events	5269	5549	4956	5849	5826
	3%	3%	3%	3%	3%
grade 6 events	2890	3551	2863	2944	3202
	2%	2%	1%	1%	2%
grade 7 events	113898	114494	134839	125385	125744
	82%	78%	83%	79%	85%

2.2 Compared Parameters

Parameter	Planned	Actual	Parameter	Planned	Actual
Instrument	ACIS	ACIS	Obspar format version number	7	7
Detector	ACIS-01236	ACIS-01236	Obspar file type	PREDICTED	ACTUAL
Grating	NONE	NONE	Obspar update status	NONE	UPDATED
Data mode	VFAINT	VFAINT	Number of optional ACIS chips dropped	0	0
Observation mode	POINTING	POINTING	On-chip summing requested	N	N
[deg] Pointing RA	220.182220	220.1710967115823	Subarray requested	NONE	NONE
[deg] Pointing Dec	3.458061	3.483118104324383	Alternating exposures requested	N	N
[deg] Pointing Roll	83.472476	83.68183463604736	[s] Primary exposure time	0.000000	3.1
[mm] SIM focus pos	-0.782348	-0.7809083437167272			
[mm] SIM defocus	0	0.001439871863259334			
[mm] SIM translation stage pos	-233.592463	-233.5874344608287			
[mm] SIM translation stage offset	0	-0.005018542100998502			
[s] Observation start time (MET)	226098998.184000	226097828.24573			
Observation start date	2005-03-01T21:15:34	2005-03-01T20:57:08			
[s] Observation end time (MET)	226122398.184000	226122700.89686			
Observation end date	2005-03-02T03:45:34	2005-03-02T03:51:40			
Read mode	TIMED	TIMED			

2.3 Aspect

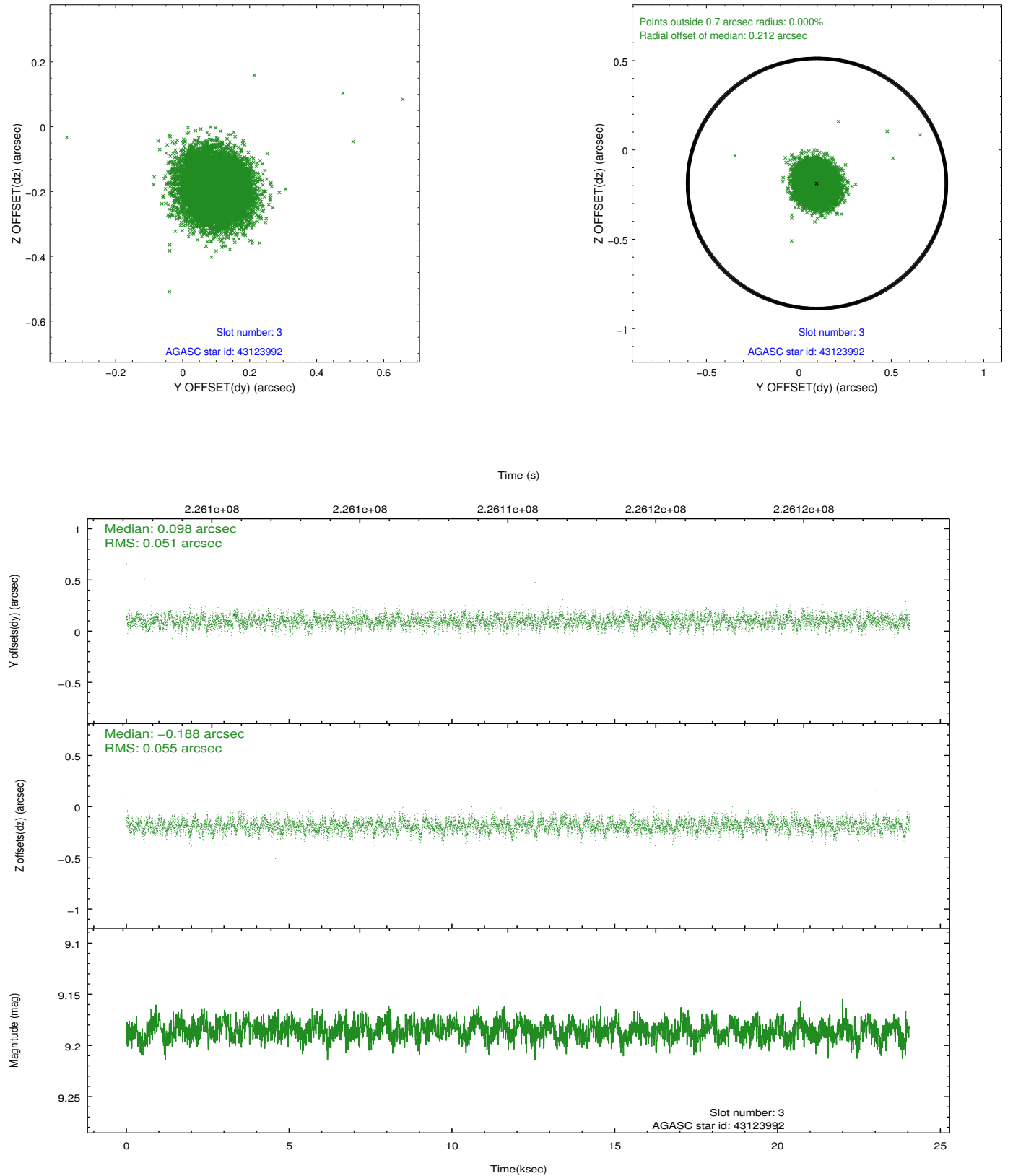


Slot Statistics

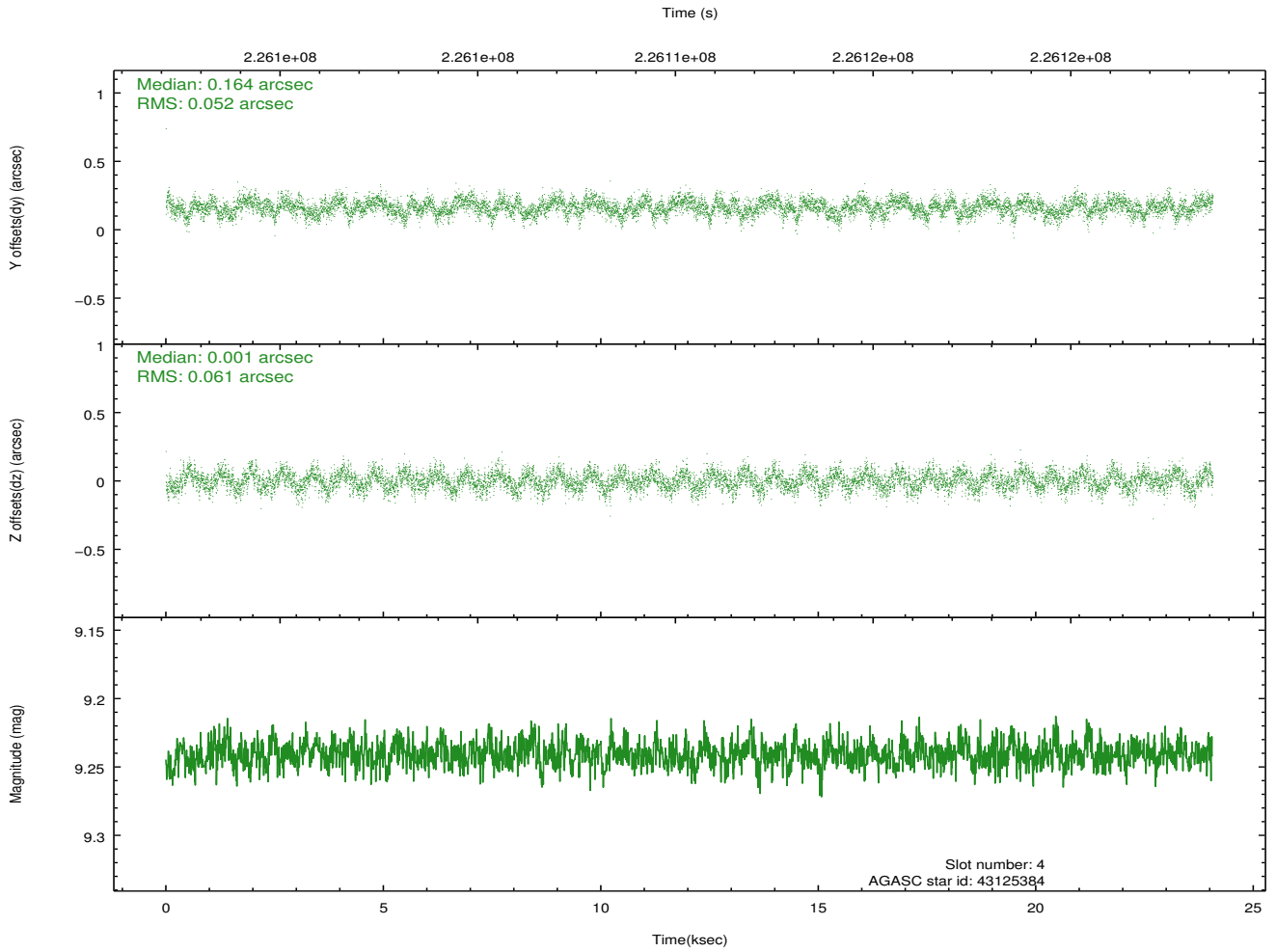
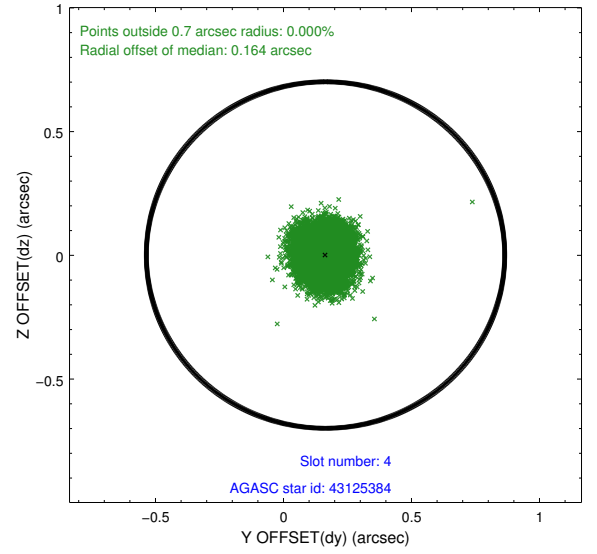
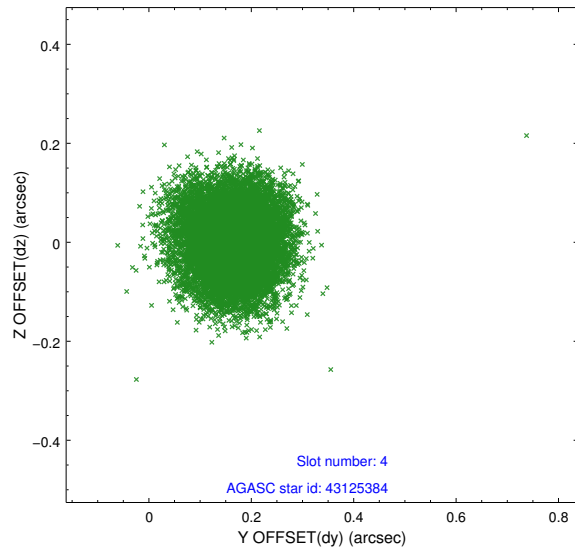
slot	status	id	mag	n_pts	med_dy	med_dz	dr1	dr2	ra	dec	mean_y	mean_z
0	FID	ACIS-I-1	7.25	5872	0.003	0.035	0.007	0.012	0.000000	0.000000	932.91	-832.53
1	FID	ACIS-I-5	7.23	5872	-0.157	0.028	0.007	0.011	0.000000	0.000000	-1815.29	1064.88
2	FID	ACIS-I-6	7.26	5872	0.063	0.007	0.008	0.013	0.000000	0.000000	398.37	1709.51
3	GUIDE	43123992	9.19	11734	0.098	-0.188	0.080	0.127	220.073183	3.041813	-1532.82	218.91
4	GUIDE	43125384	9.24	11736	0.164	0.001	0.086	0.136	220.495715	3.039281	-1368.99	-1291.05
5	GUIDE	43126952	9.10	11737	-0.181	0.018	0.099	0.165	220.546654	3.938620	1867.97	-1103.37
6	GUIDE	43128056	8.96	11735	-0.093	0.042	0.088	0.138	220.702521	4.045739	2315.80	-1615.73
7	GUIDE	43125480	9.77	11723	0.017	0.126	0.109	0.181	220.758854	2.752621	-2286.07	-2348.91

2.4 Star Slots

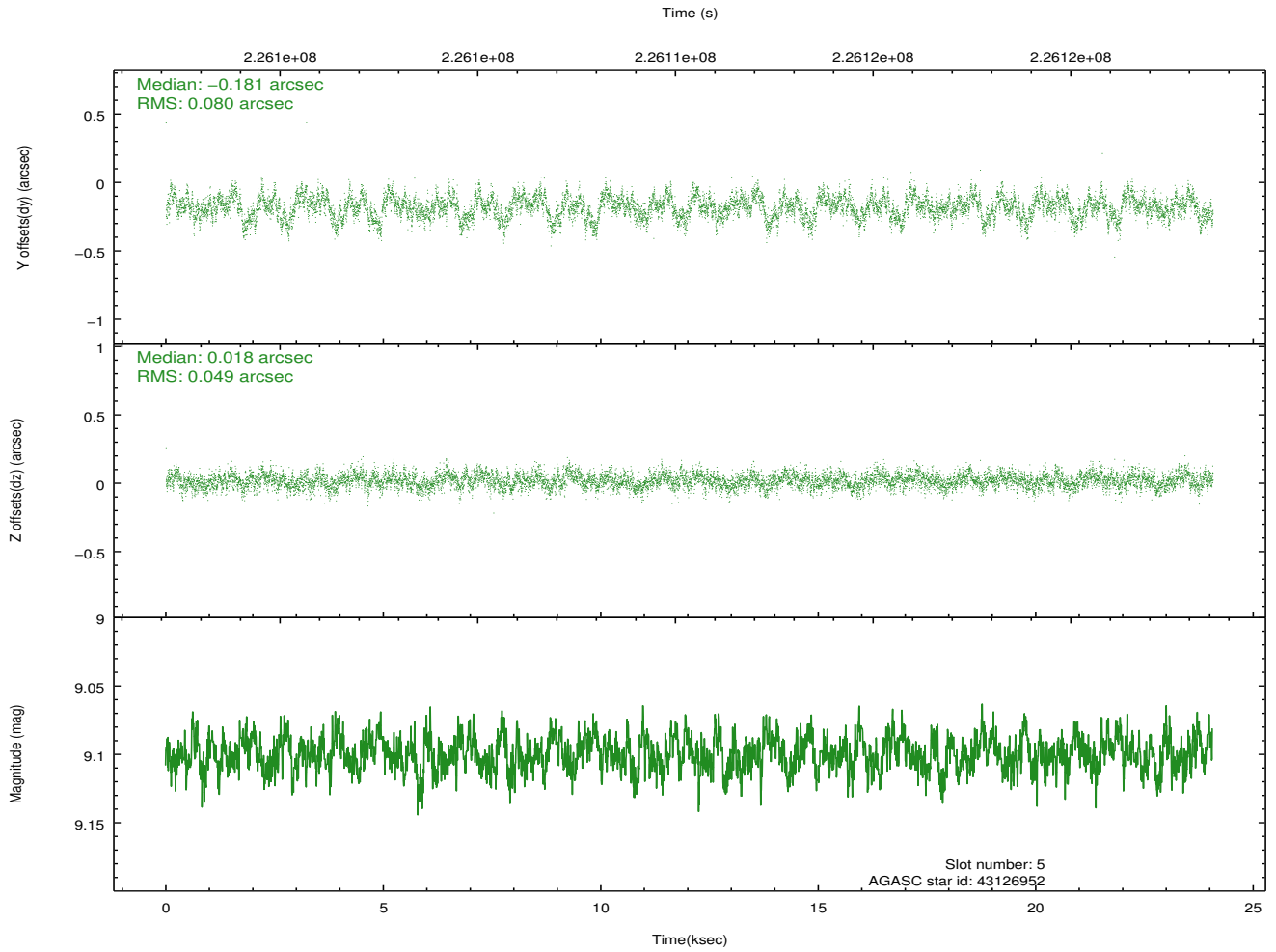
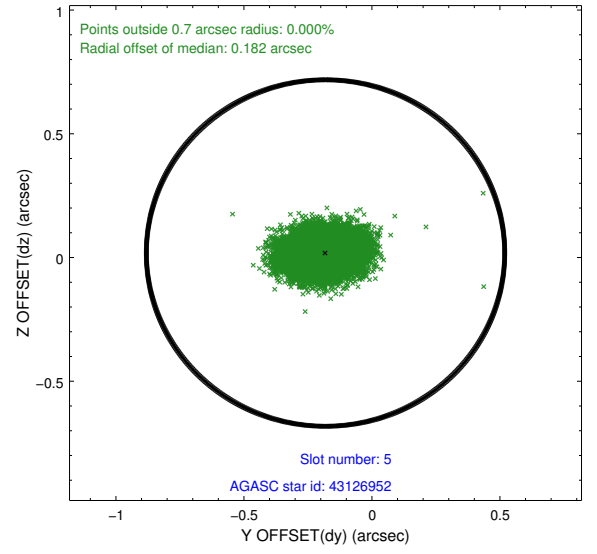
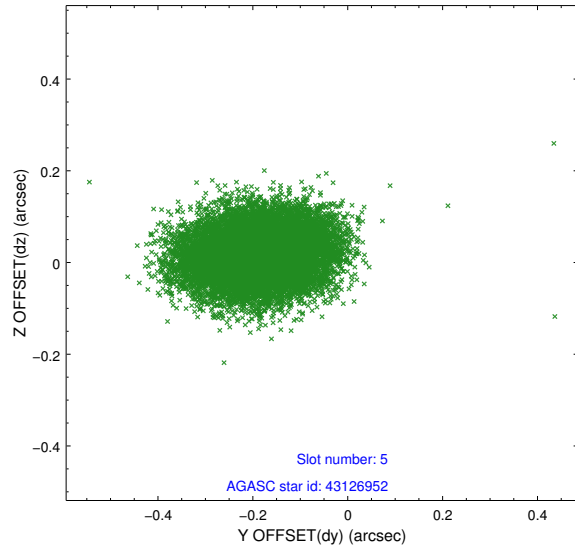
2.4.1 Slot 3



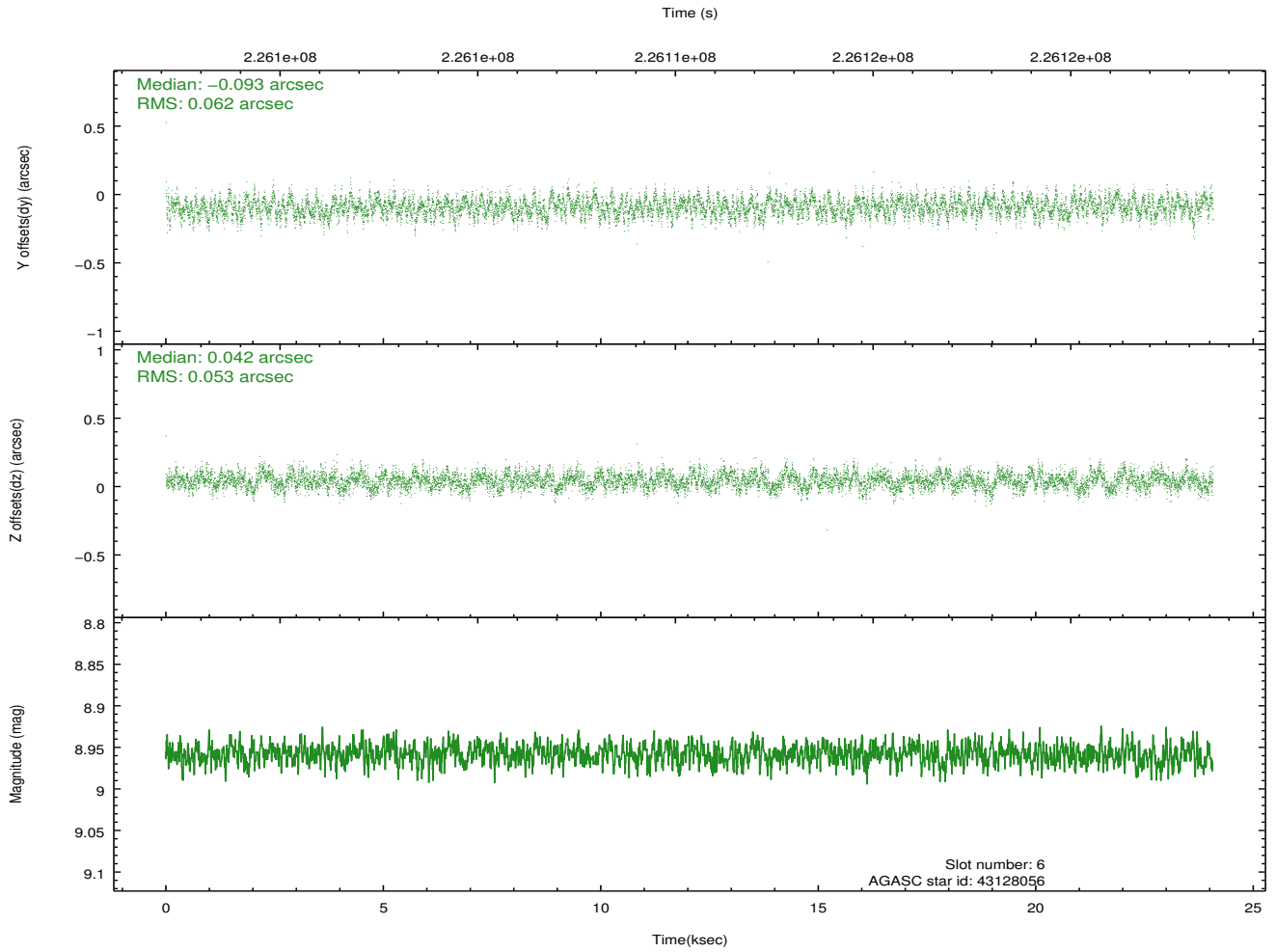
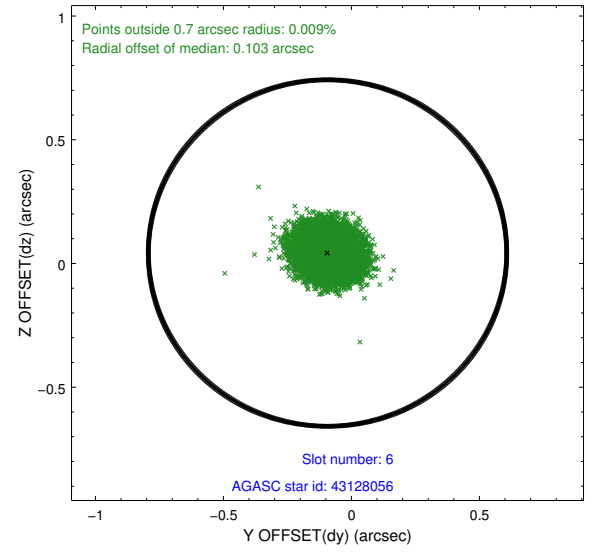
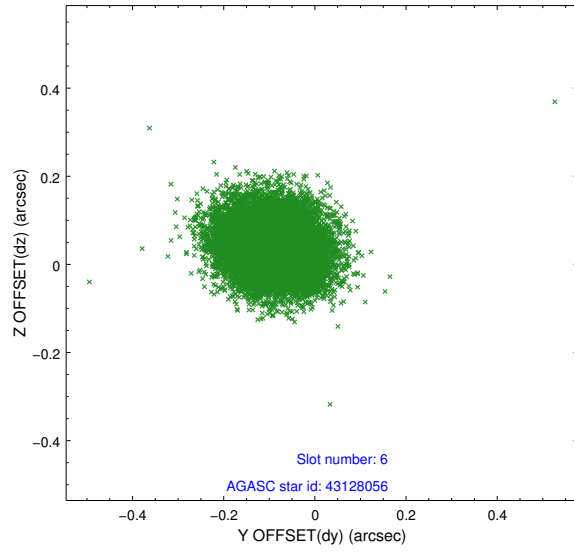
2.4.2 Slot 4



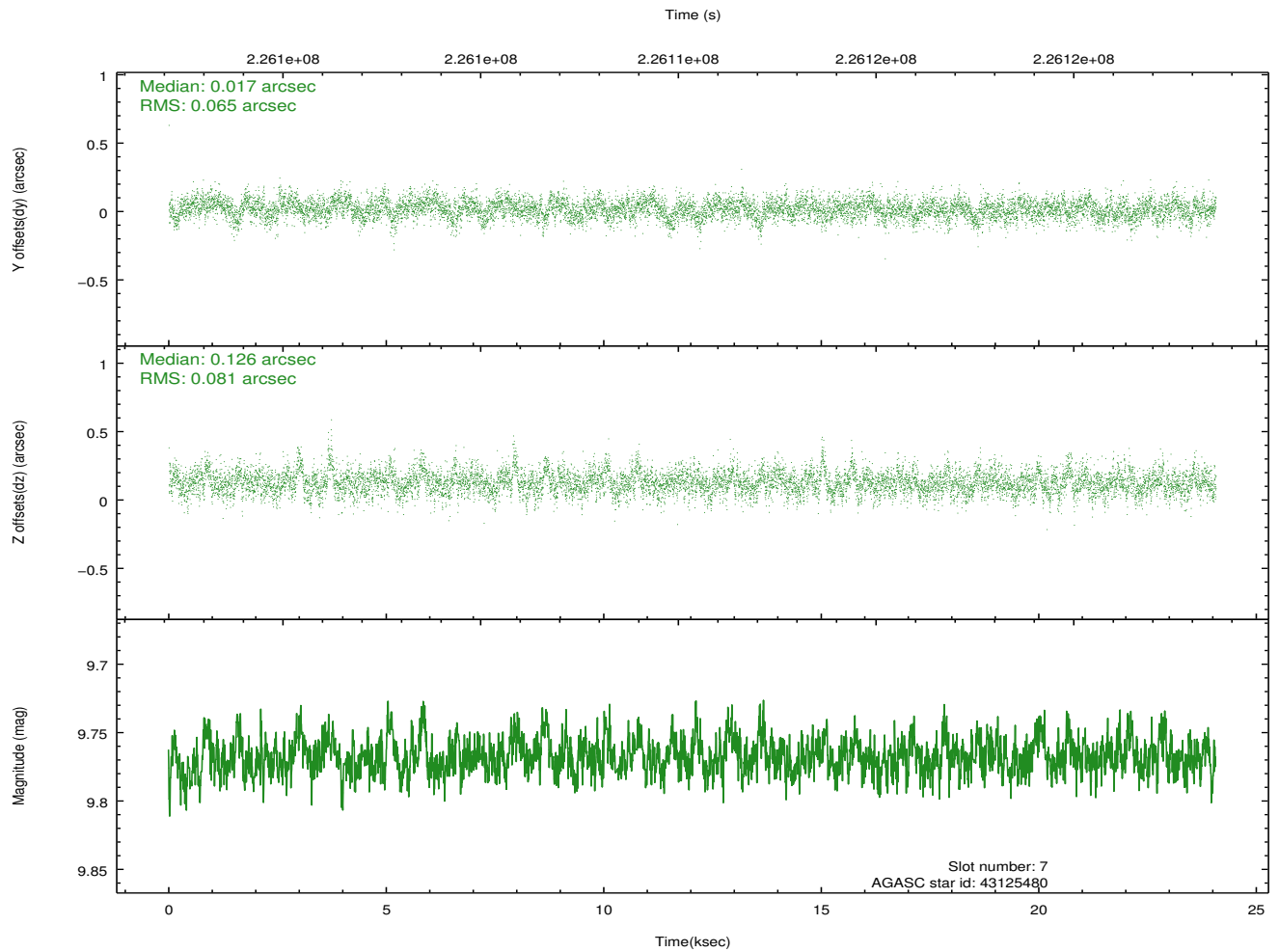
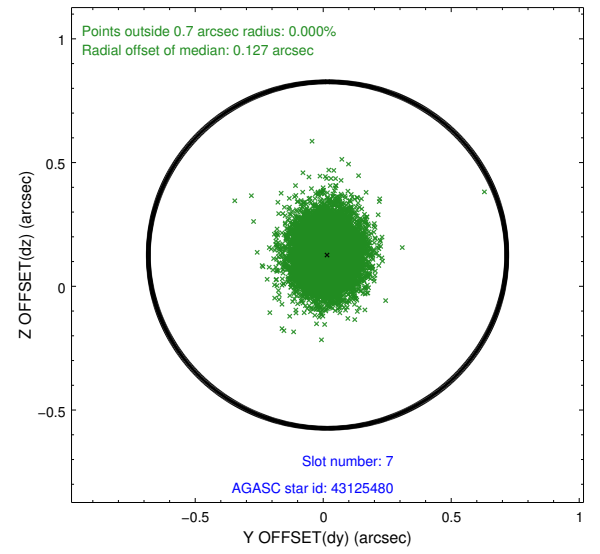
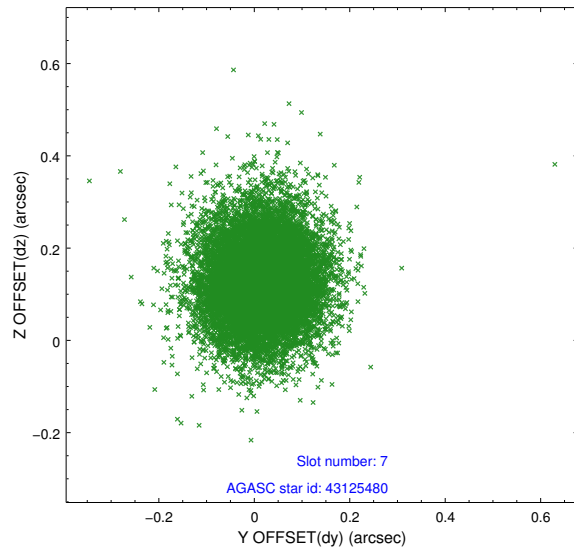
2.4.3 Slot 5



2.4.4 Slot 6

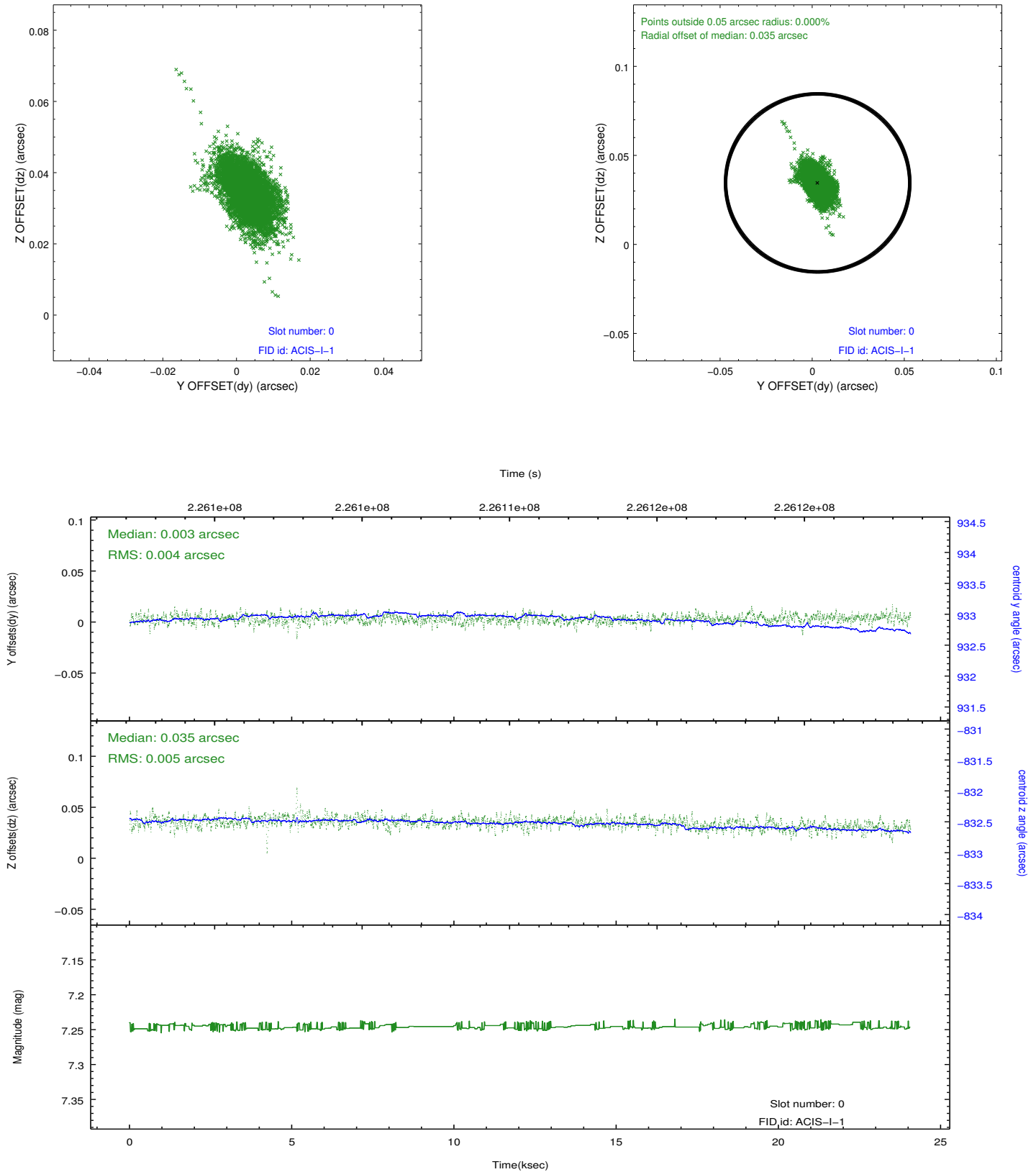


2.4.5 Slot 7

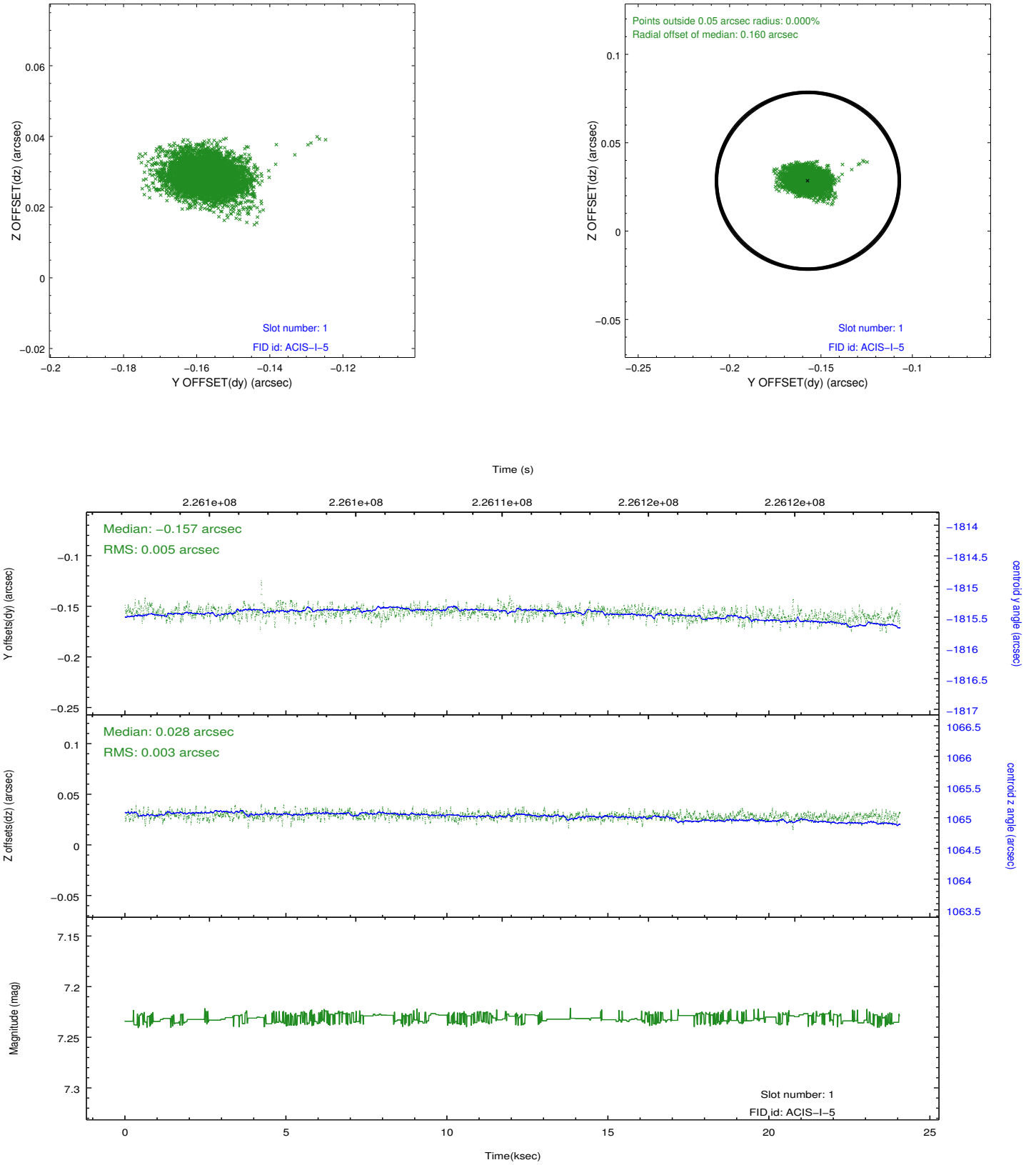


2.5 FID Slots

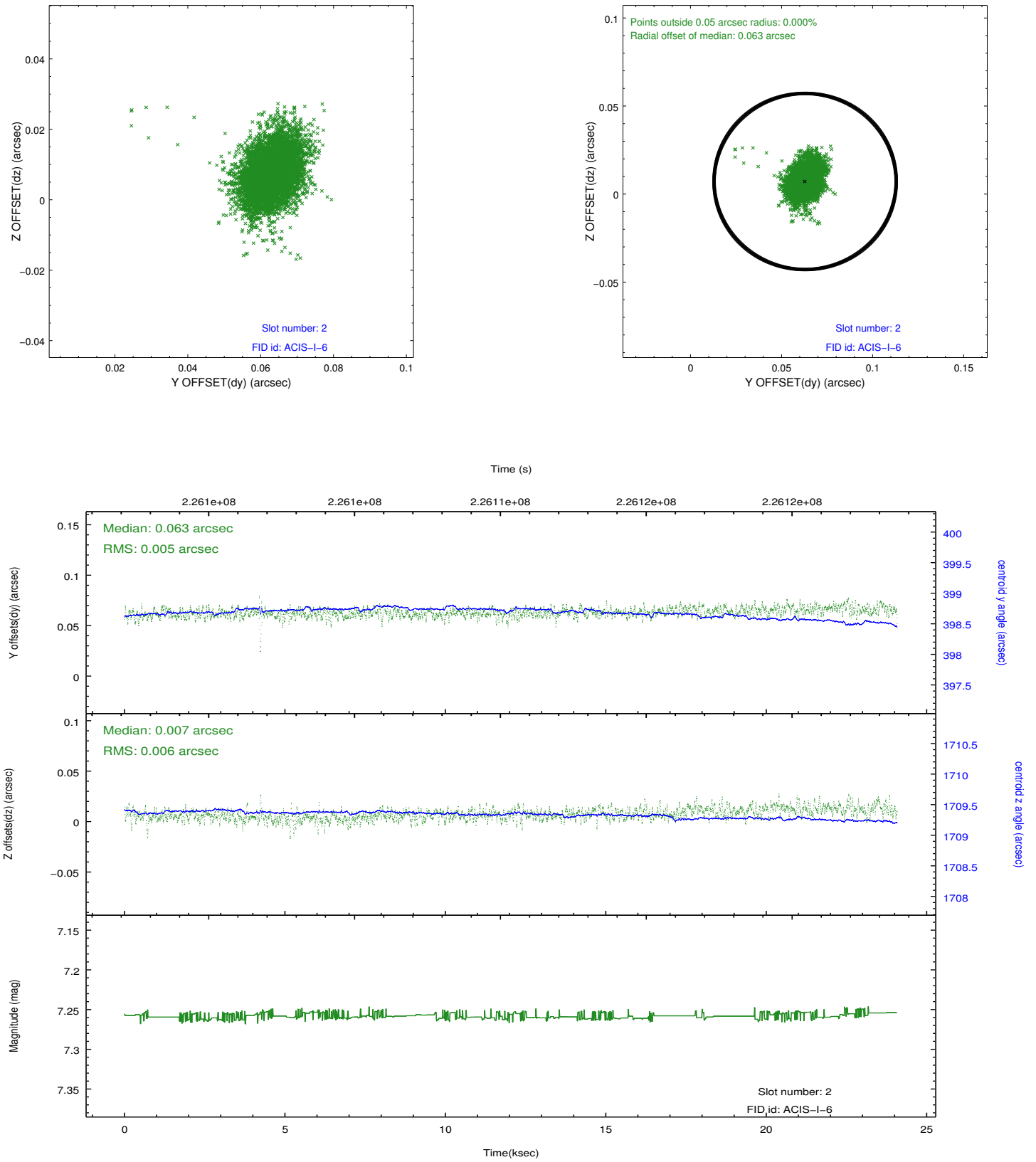
2.5.1 Slot 0



2.5.2 Slot 1



2.5.3 Slot 2



A Summary

A.1 Status

V&V Scientist	Jen Lauer
V&V Date (YYYY-MM-DD)	2013.01.11
V&V Edition	1
V&V Disposition and Status	OK
V&V Charge Time	23.44831

A.2 Comments