

# V&V Reference Report

## L2 ASCDS Version : 7.6.7.2

Observation 4934 - L2 Version 001  
Chandra X-Ray Center

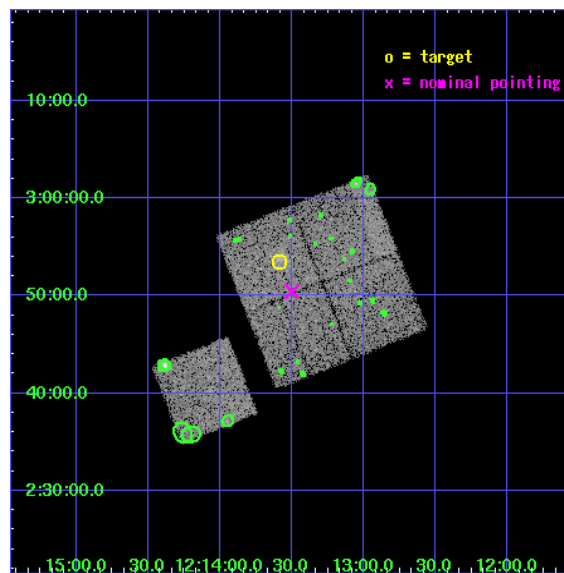
L2 Processing Date : Apr 27 2006

## Contents

<b>1</b>	<b>Front</b>	<b>2</b>
<b>2</b>	<b>OBI</b>	<b>3</b>
2.1	OBI . . . . .	3
2.1.1	Images . . . . .	3
2.1.2	Bias . . . . .	3
2.1.3	Parameters . . . . .	4
2.1.4	Events . . . . .	4
2.2	Compared Parameters . . . . .	5
2.3	Aspect . . . . .	6
2.4	Star Slots . . . . .	9
2.4.1	Slot 3 . . . . .	9
2.4.2	Slot 4 . . . . .	10
2.4.3	Slot 5 . . . . .	11
2.4.4	Slot 6 . . . . .	12
2.4.5	Slot 7 . . . . .	13
2.5	FID Slots . . . . .	14
2.5.1	Slot 0 . . . . .	14
2.5.2	Slot 1 . . . . .	15
2.5.3	Slot 2 . . . . .	16
<b>3</b>	<b>Point Sources</b>	<b>17</b>
<b>A</b>	<b>Summary</b>	<b>18</b>
A.1	Status . . . . .	18
A.2	Comments . . . . .	18

# 1 Front

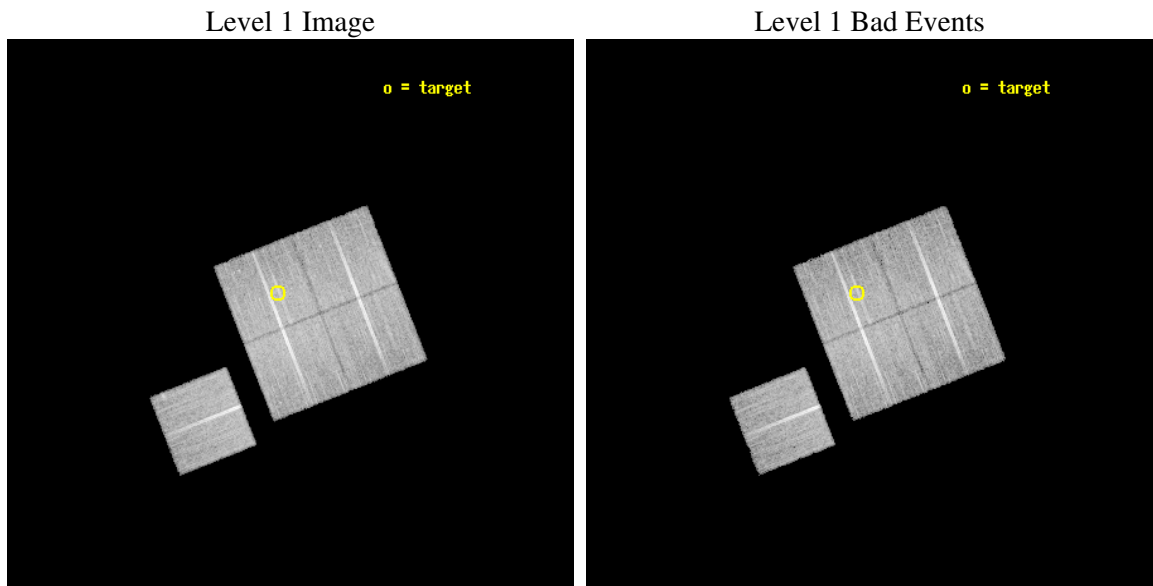
seq_num	800385
obs_id	4934
title	Chandra snapshot survey of 10 distant clusters of galaxies
observer	Dr. Stephen Murray
object	CL1213+0253
dtcycle	0
cycle	P
ra_targ	183.397083
dec_targ	2.890556
ra_nom	183.37529661755
dec_nom	2.8408144820253
roll_nom	248.47579552869
revision	2
ontime	19179.699963123
livetime	18929.103063215
ontime0	19176.559022784
ontime1	19176.558992893
ontime2	19176.558972955
ontime3	19179.699963123
ontime6	19176.559002876
l2events	51209



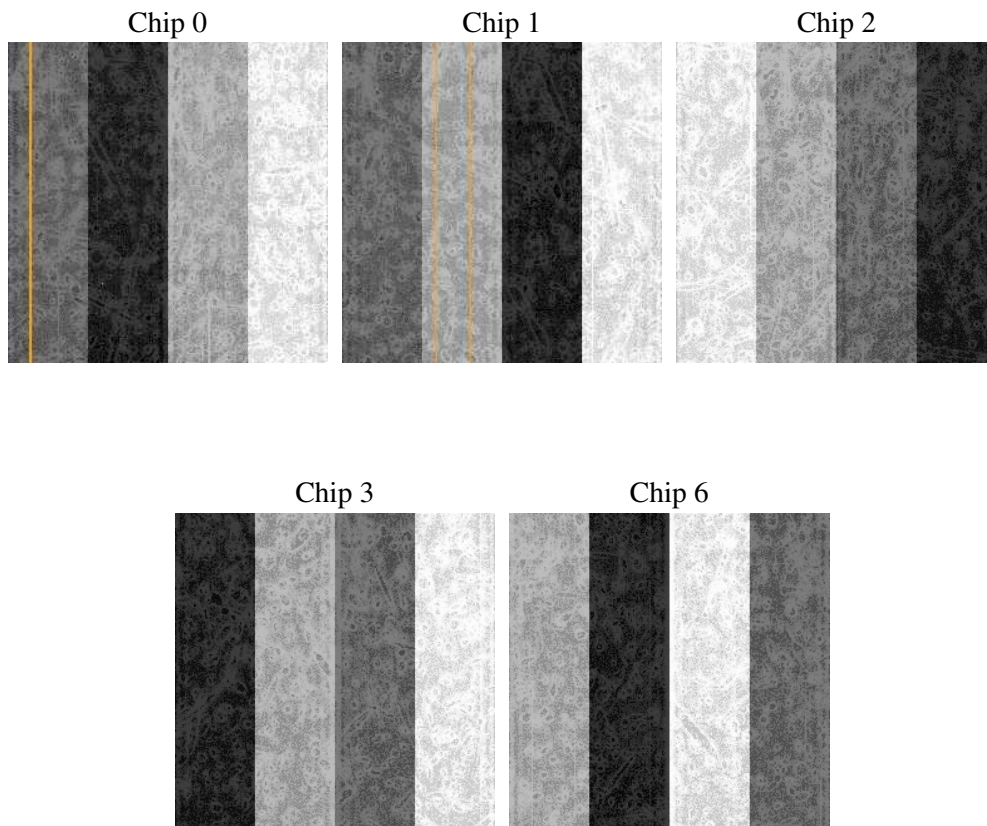
## 2 OBI

### 2.1 OBI

#### 2.1.1 Images



#### 2.1.2 Bias



### 2.1.3 Parameters

obi_num	0
ascdsver	7.6.7.2
caldsver	3.2.1
date	2006-04-28T02:12:47
revision	2

sched_exp_time	19000.000000
ontime	20152.667995334
ontime0	20149.527054995
ontime1	20149.527025104
ontime2	20149.527005166
ontime3	20152.667995334
ontime6	20149.527065009
l1events	601327

### 2.1.4 Events

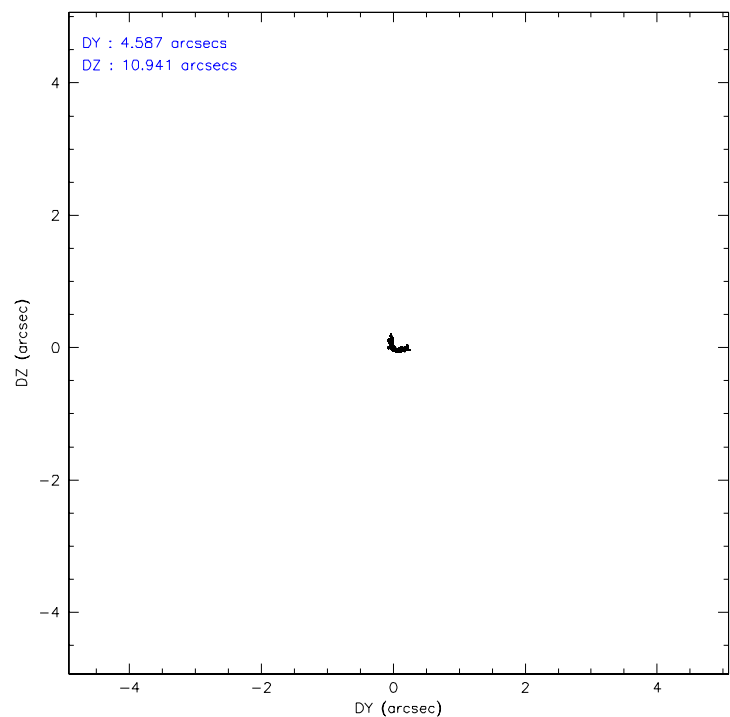
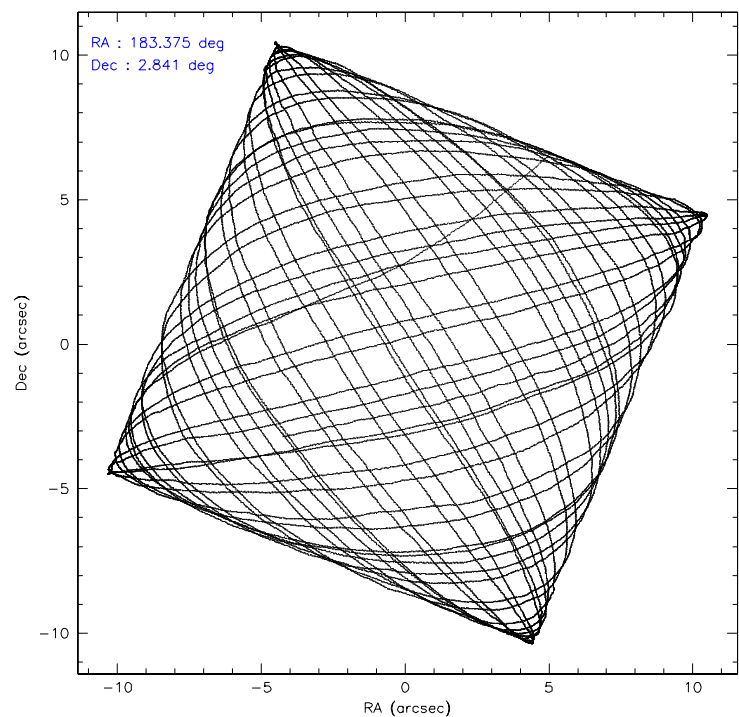
	ccd 0	ccd 1	ccd 2	ccd 3	ccd 6
level 1 events	113205	116829	127700	122638	120955
rejected events	101768	103683	116157	110592	108203
rejected %	89%	88%	90%	90%	89%

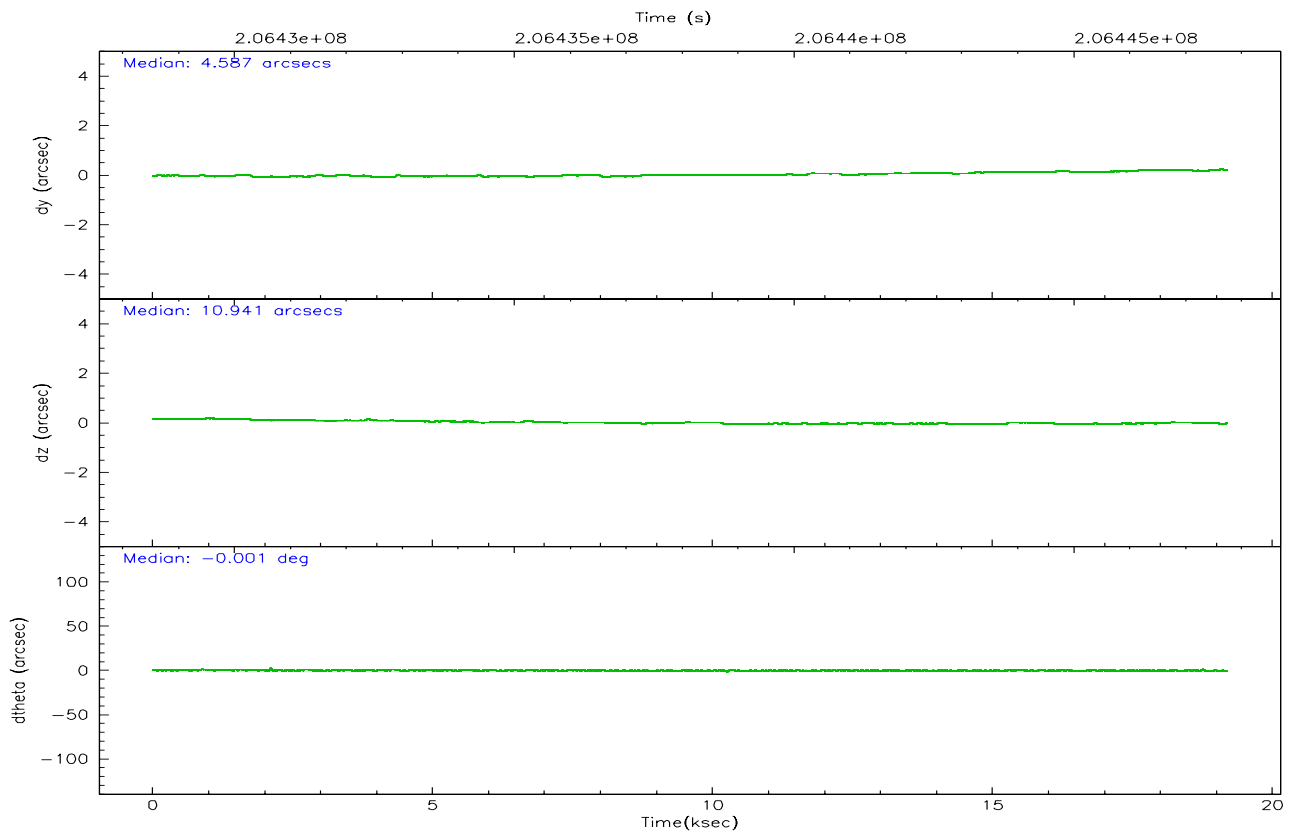
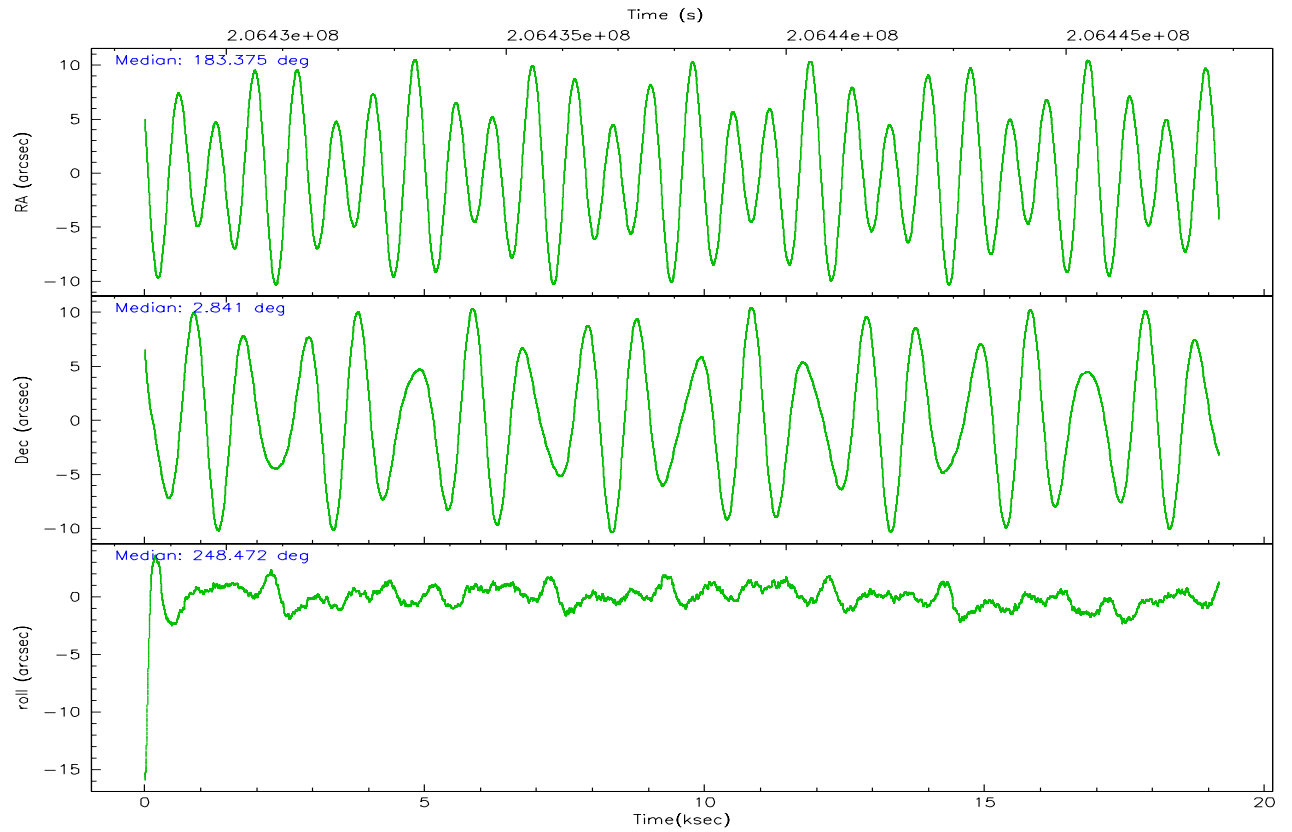
	ccd 0	ccd 1	ccd 2	ccd 3	ccd 6
grade 0 events	4208	5199	4443	4854	5018
	3%	4%	3%	3%	4%
grade 1 events	62	51	68	59	57
	0%	0%	0%	0%	0%
grade 2 events	2856	2878	2731	2554	2711
	2%	2%	2%	2%	2%
grade 3 events	1391	1551	1311	1381	1397
	1%	1%	1%	1%	1%
grade 4 events	1254	1476	1326	1323	1380
	1%	1%	1%	1%	1%
grade 5 events	4361	4395	4139	4758	4673
	3%	3%	3%	3%	3%
grade 6 events	2333	2714	2325	2463	2857
	2%	2%	1%	2%	2%
grade 7 events	96740	98565	111357	105246	102862
	85%	84%	87%	85%	85%

## 2.2 Compared Parameters

Parameter	Planned	Actual	Parameter	Planned	Actual
Instrument	ACIS	ACIS	Obspar format version number	6	6
Detector	ACIS-01236	ACIS-01236	Obspar file type	PREDICTED	ACTUAL
Grating	NONE	NONE	Obspar update status	NONE	UPDATED
Data mode	VFAINT	VFAINT	On-chip summing requested	N	N
Observation mode	POINTING	POINTING	Subarray requested	NONE	NONE
Pointing RA	183.371148	183.3752966175524	Alternating exposures requested	N	N
Pointing Dec	2.867869	2.840814482025265	Primary exposure time	0.000000	3.1
Pointing Roll	248.267323	248.4757955286903			
SIM focus pos (mm)	-0.782348	-0.7809083437167272			
SIM defocus (mm)	0	0.001439871863259334			
SIM translation stage pos (mm)	-225.840463	-225.8458576473255			
SIM translation stage offset (mm)	-7.752	-7.746595355604228			
Observation start time	206428736.184000	206427260.95106			
Observation start date	2004-07-17T05:17:52	2004-07-17T04:54:20			
Observation end time	206447736.184000	206448698.31451			
Observation end date	2004-07-17T10:34:32	2004-07-17T10:51:38			
Read mode	TIMED	TIMED			

## 2.3 Aspect



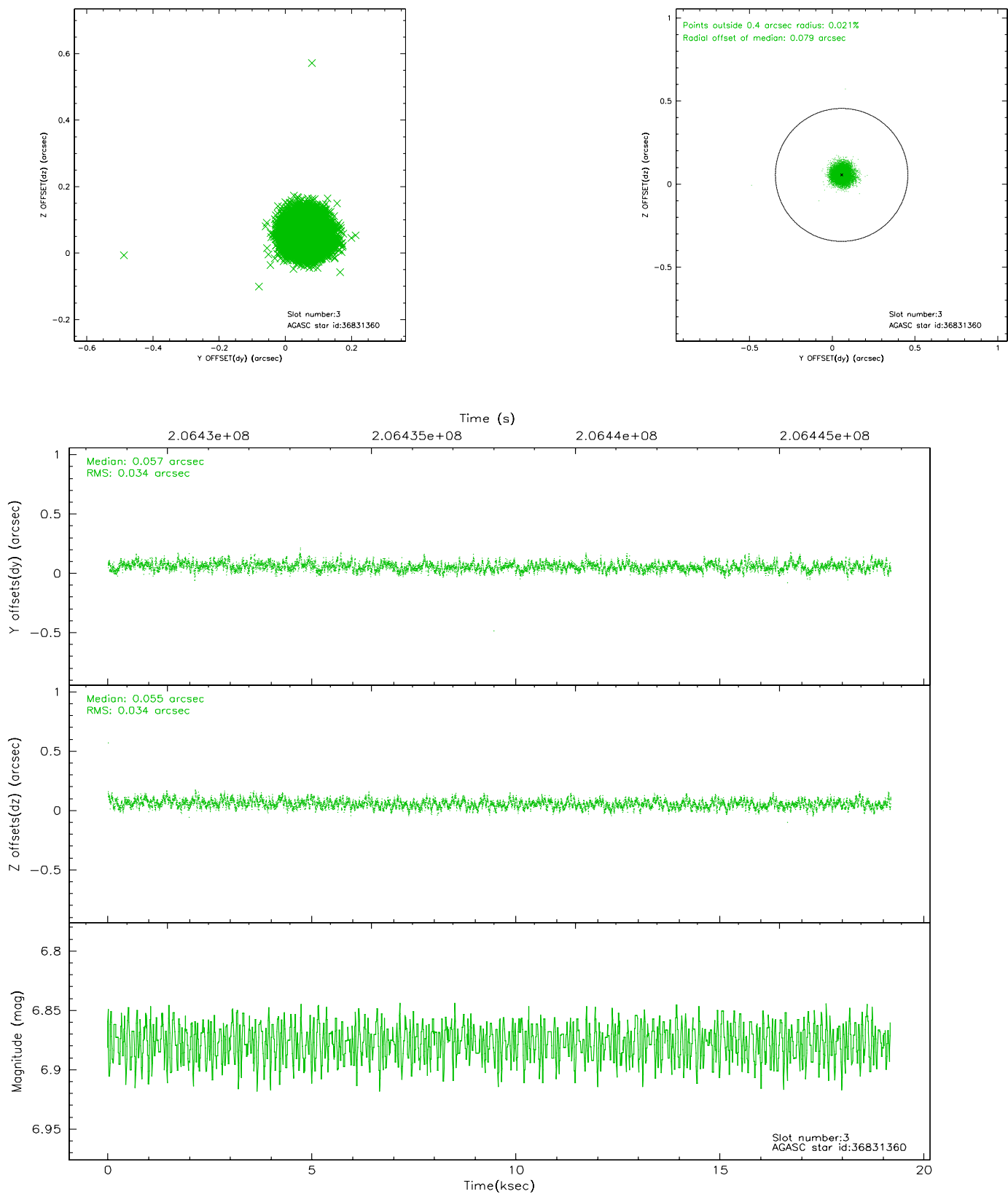


### Slot Statistics

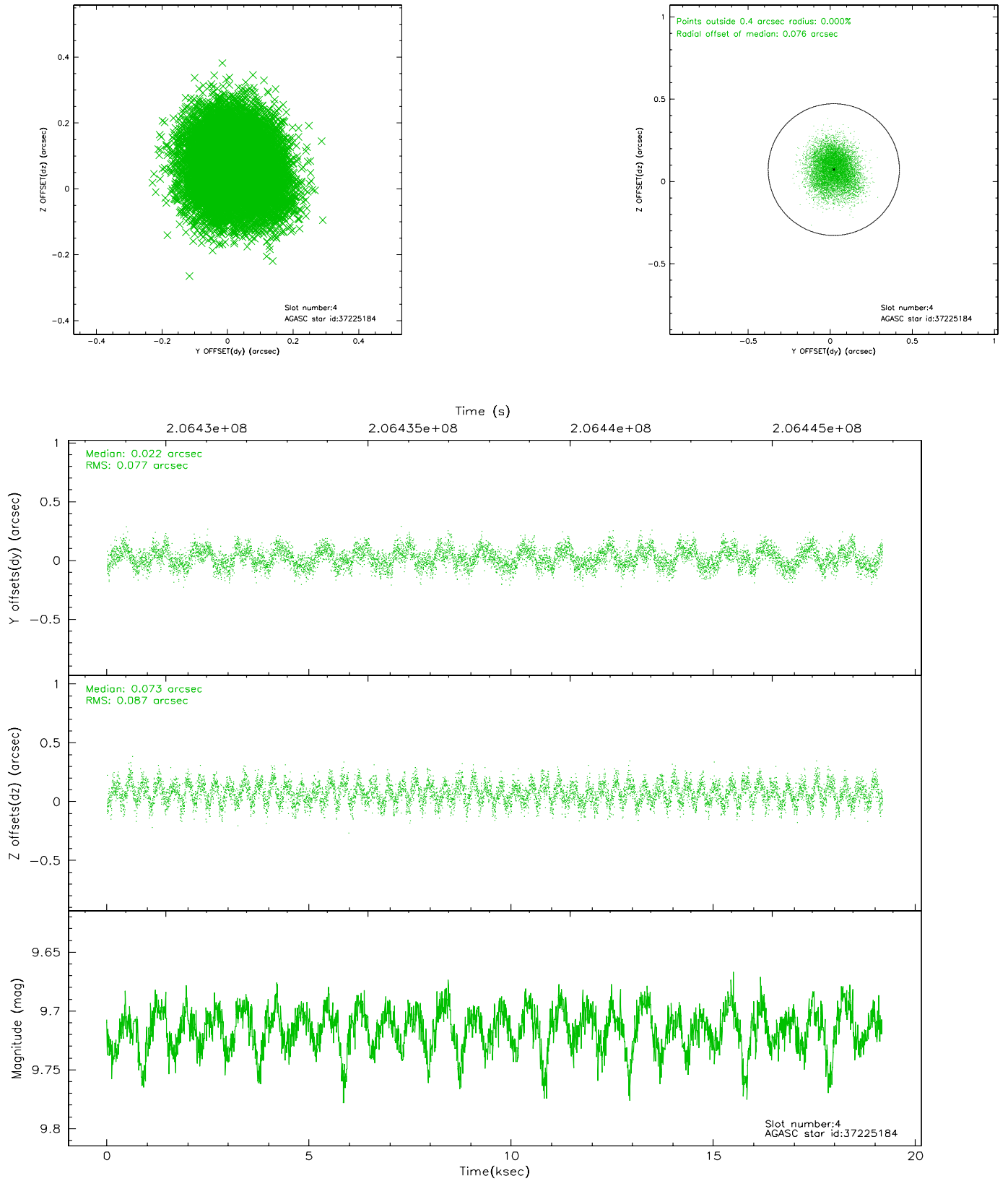
slot	status	id	mag	n_pts	med_dy	med_dz	dr1	dr2	ra	dec	mean_y	mean_z
0	FID	ACIS-I-1	7.23	4680	0.091	-0.062	0.010	0.019	0.000000	0.000000	935.05	-993.58
1	FID	ACIS-I-5	7.22	4679	-0.220	0.089	0.009	0.018	0.000000	0.000000	-1813.21	904.00
2	FID	ACIS-I-6	7.24	4679	0.037	0.045	0.007	0.013	0.000000	0.000000	400.38	1548.64
3	GUIDE	36831360	6.88	9359	0.057	0.055	0.050	0.081	183.482386	2.260219	1884.48	1181.78
4	GUIDE	37225184	9.71	9354	0.022	0.073	0.126	0.195	183.322910	3.026545	-465.68	-372.33
5	GUIDE	37225816	8.30	9355	0.060	0.014	0.050	0.082	182.886175	2.608011	1514.99	-1273.67
6	GUIDE	37227056	9.65	9351	0.083	-0.105	0.115	0.184	182.943906	3.124246	-288.22	-1768.73
7	GUIDE	37230440	7.75	9352	-0.219	-0.038	0.069	0.110	183.124640	3.404103	-1465.08	-1538.25

## 2.4 Star Slots

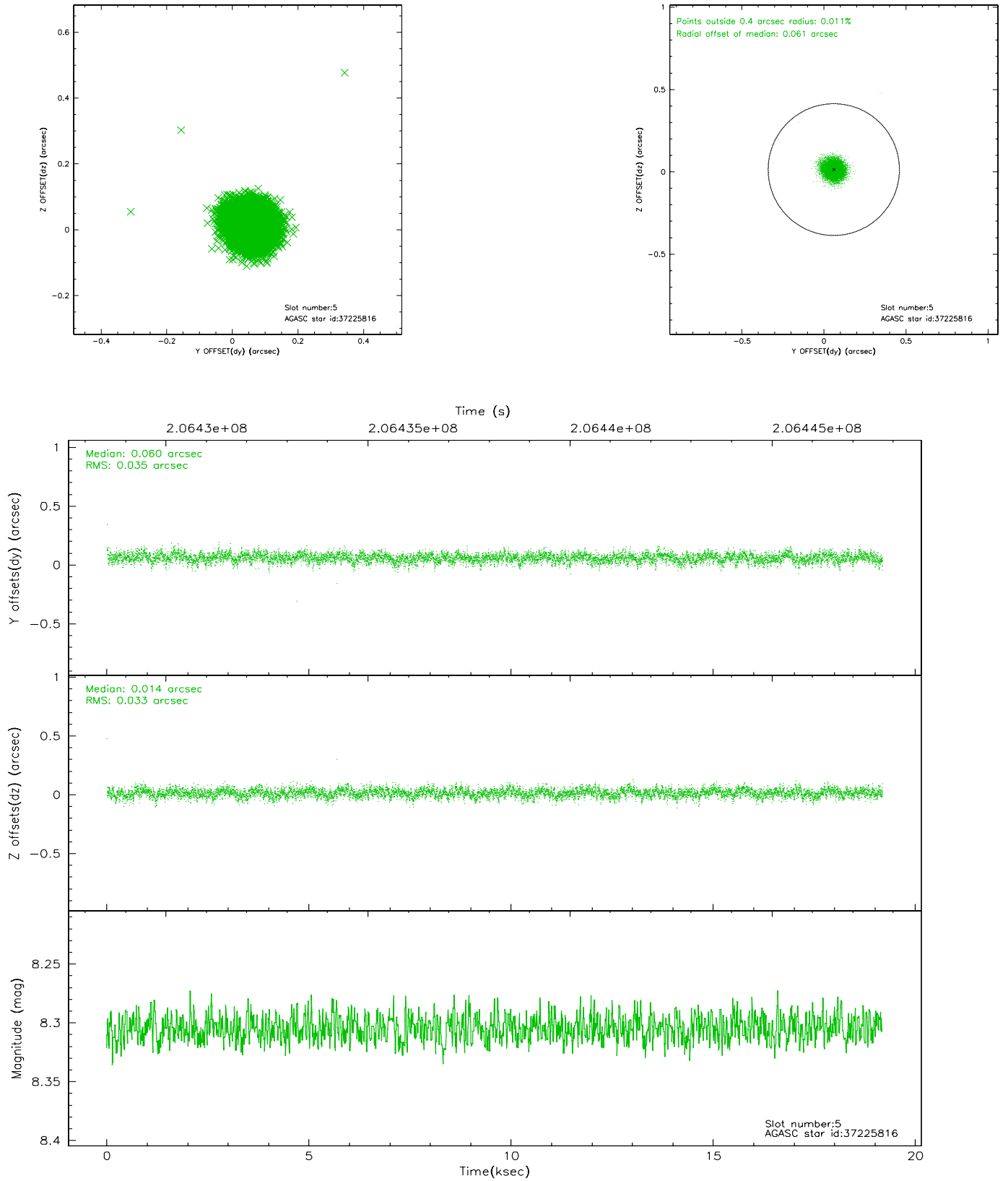
### 2.4.1 Slot 3



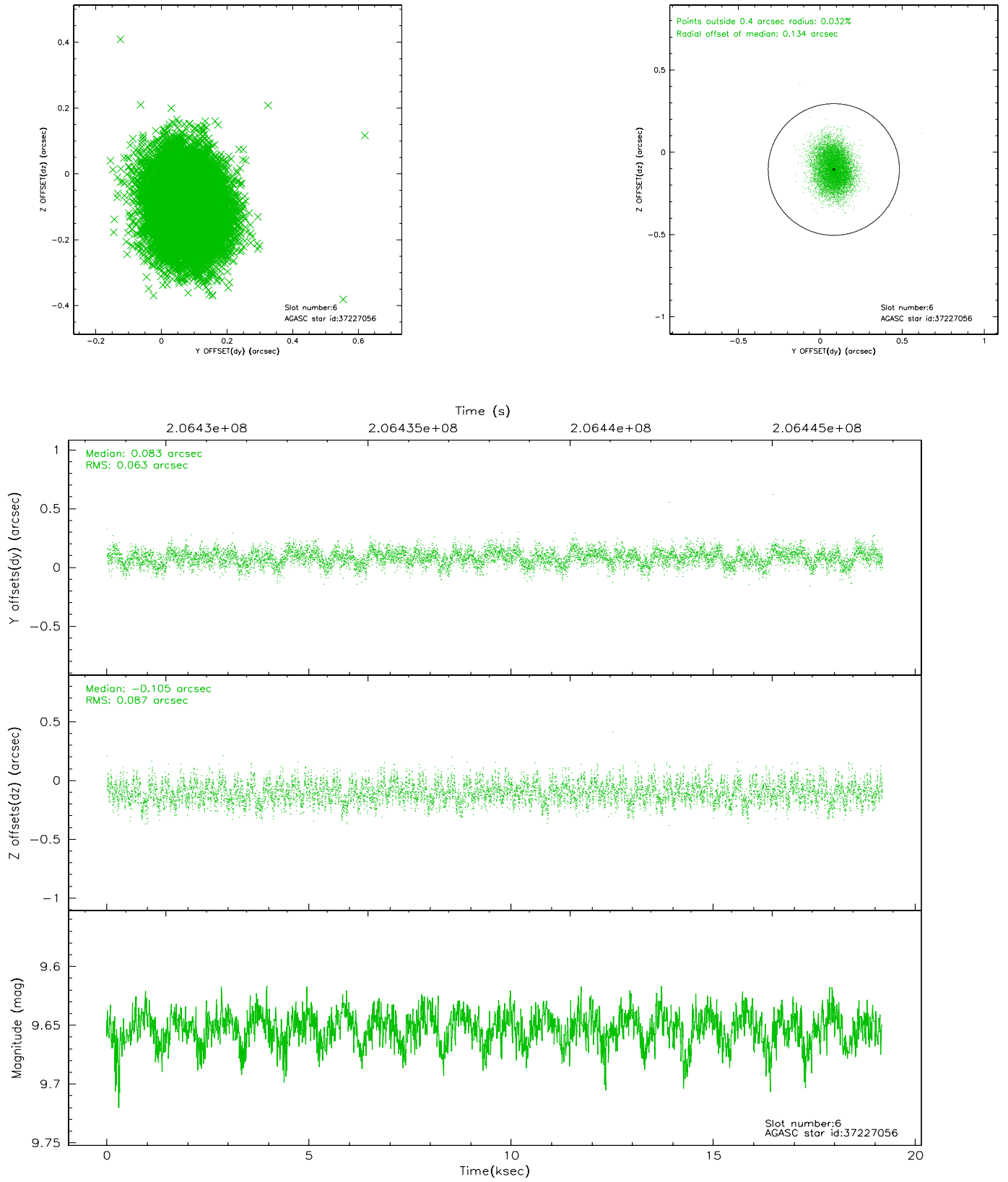
## 2.4.2 Slot 4



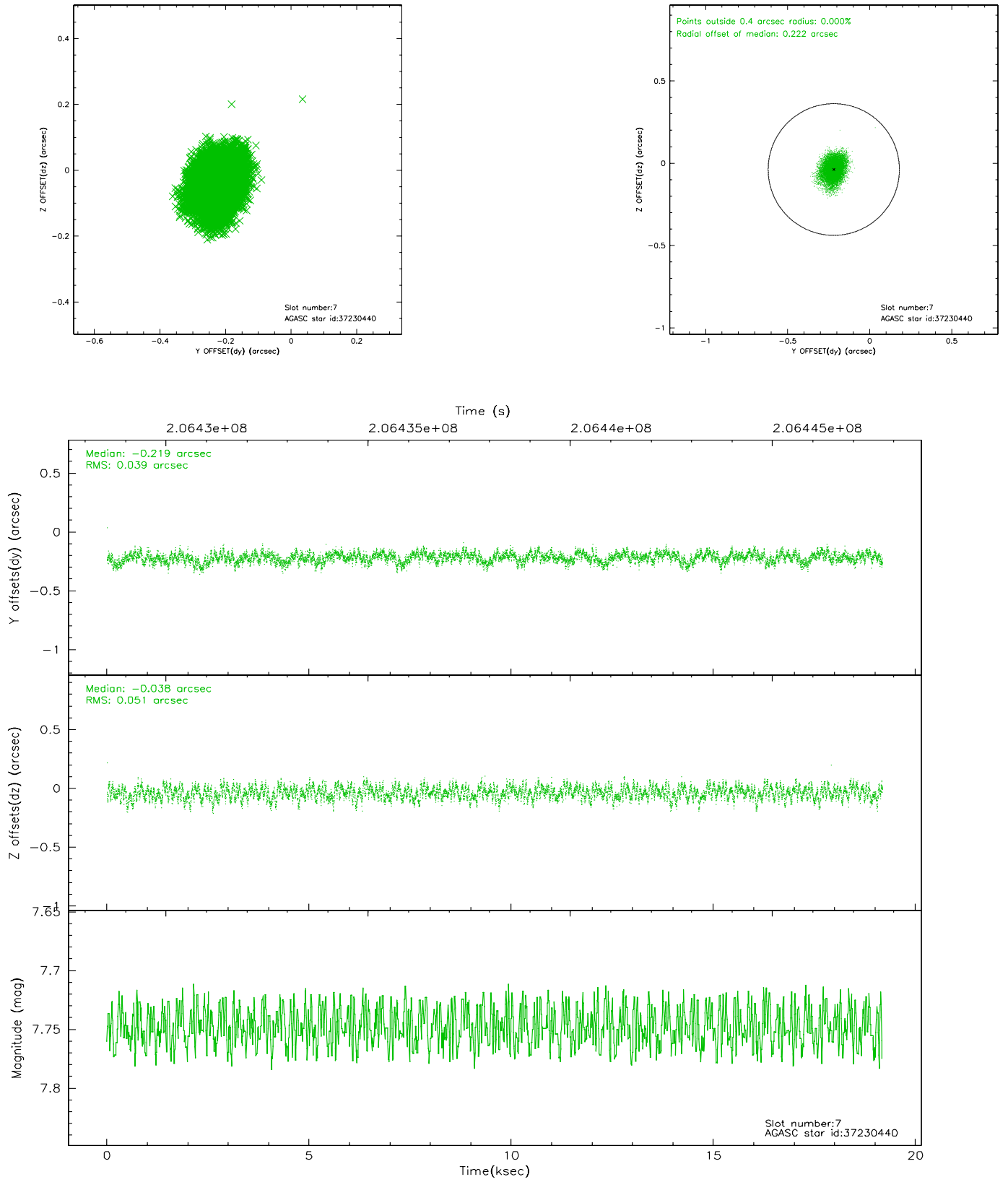
### 2.4.3 Slot 5



## 2.4.4 Slot 6

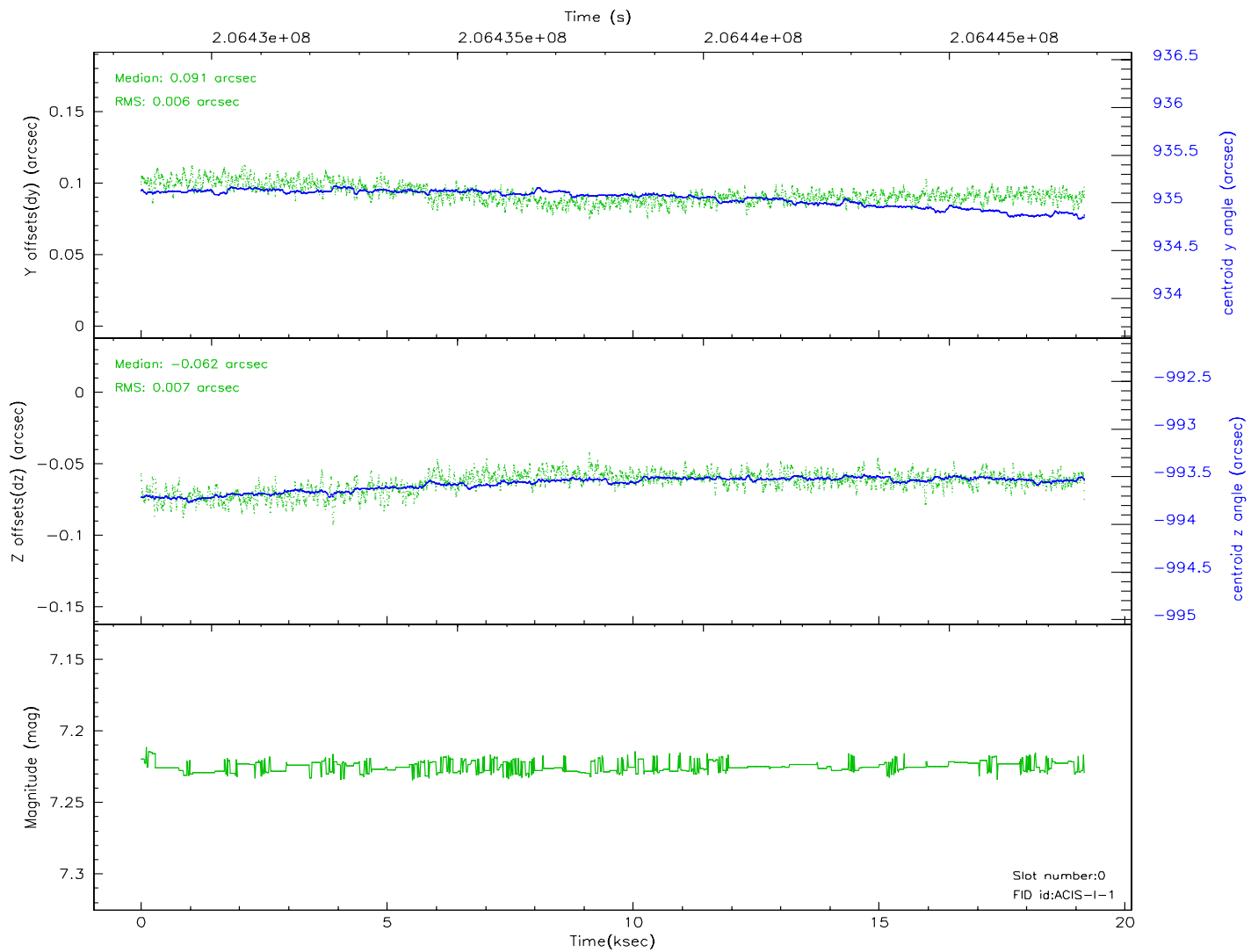
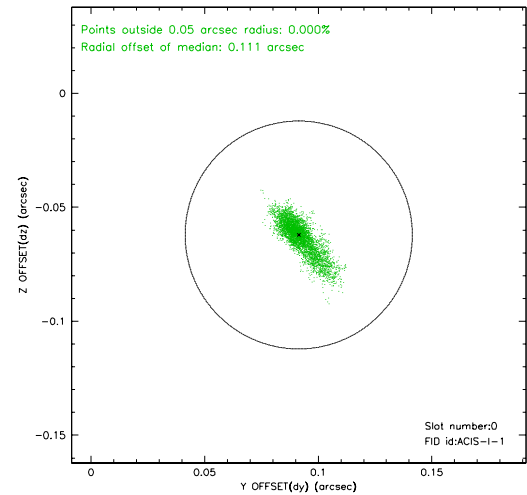
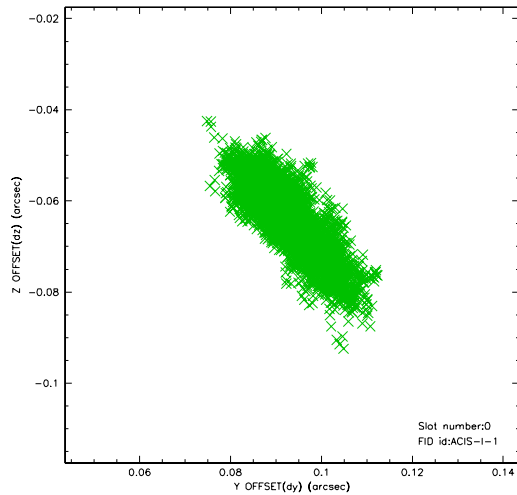


## 2.4.5 Slot 7

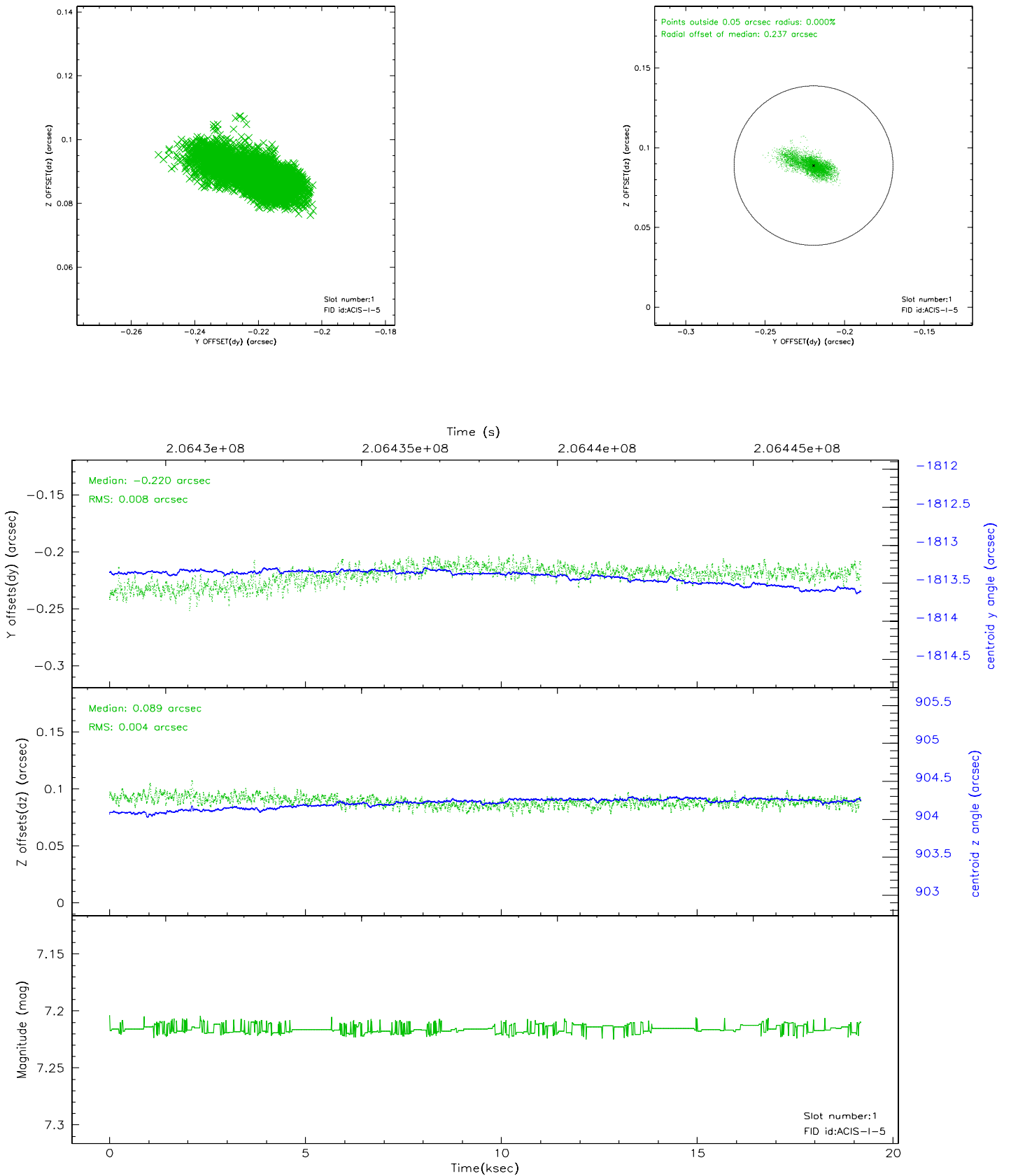


## 2.5 FID Slots

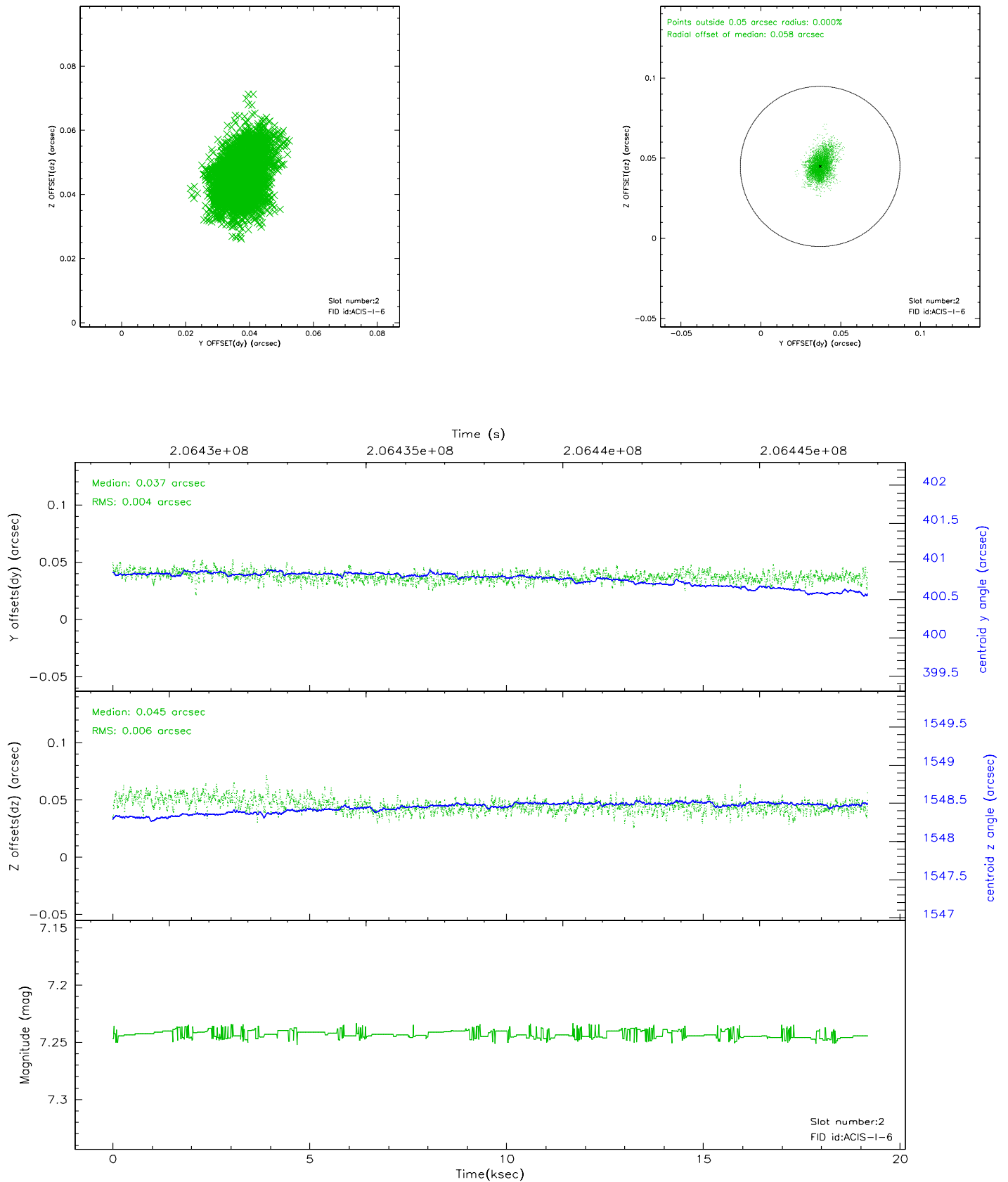
### 2.5.1 Slot 0



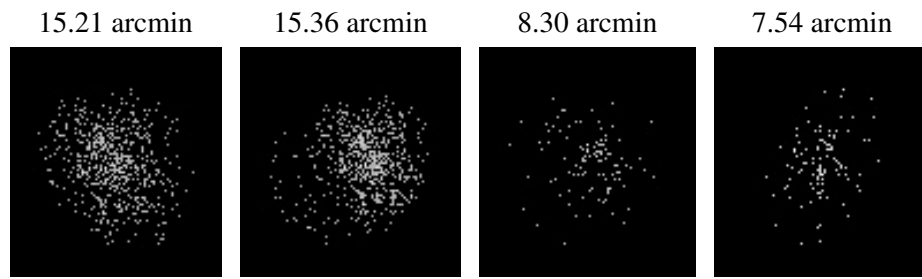
## 2.5.2 Slot 1



### 2.5.3 Slot 2



### 3 Point Sources



## A Summary

### A.1 Status

V&V Scientist	Jen Lauer
V&V Date (YYYY-MM-DD)	2006.04.28
V&V Edition	1
V&V Disposition and Status	OK
V&V Charge Time	19.179

### A.2 Comments