

V&V Reference Report

L2 ASCDS Version : 8.5

Observation 4932 - L2 Version 3
Chandra X-Ray Center

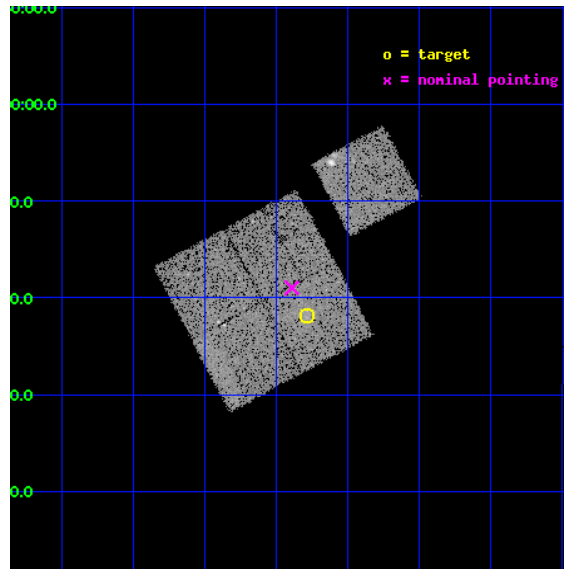
L2 Processing Date : Dec 12 2012

Contents

1	Front	2
2	OBI	3
2.1	OBI	3
2.1.1	Images	3
2.1.2	Bias	3
2.1.3	Parameters	4
2.1.4	Events	4
2.2	Compared Parameters	5
2.3	Aspect	6
2.4	Star Slots	9
2.4.1	Slot 3	9
2.4.2	Slot 4	10
2.4.3	Slot 5	11
2.4.4	Slot 6	12
2.4.5	Slot 7	13
2.5	FID Slots	14
2.5.1	Slot 0	14
2.5.2	Slot 1	15
2.5.3	Slot 2	16
A	Summary	17
A.1	Status	17
A.2	Comments	17

1 Front

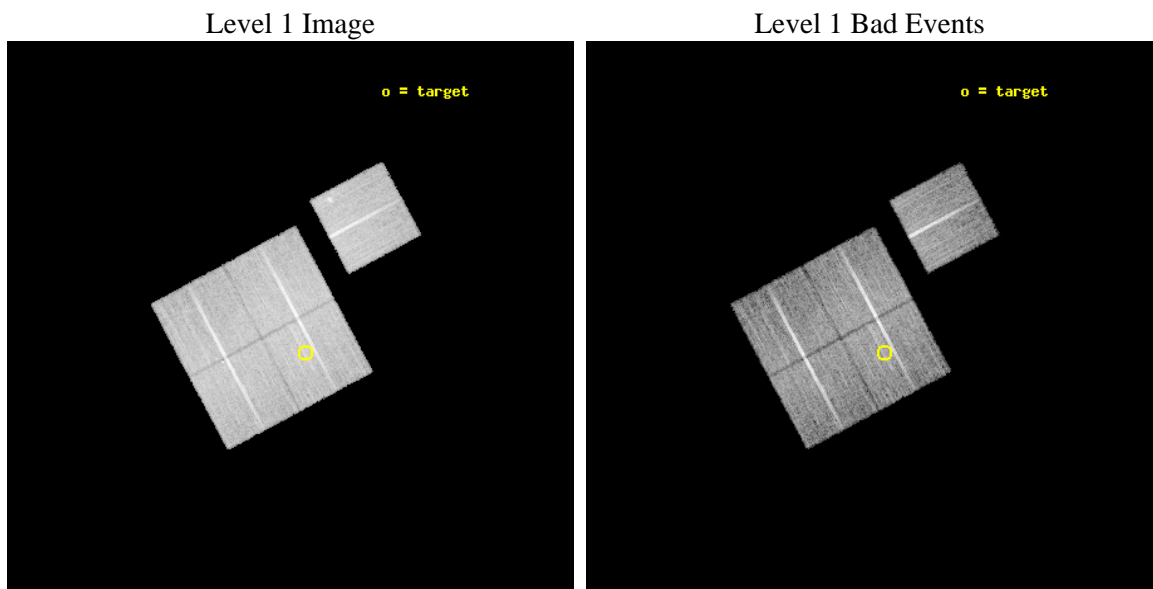
seq_num	800383	Sequence number
obs_id	4932	Observation id
title	Chandra snapshot survey of 10 distant clusters of galaxies	Proposa
observer	Dr. Stephen Murray	Principal investigator
object	CL1354-0221	Source name
dtcycle	0	
cycle	P	events from which exps? Prim/Second/Both
ra_targ	208.570417	Observer's specified target RA [deg]
dec_targ	-2.363056	Observer's specified target Dec [deg]
ra_nom	208.59781381298	Nominal RA [deg]
dec_nom	-2.3161688402762	Nominal Dec [deg]
roll_nom	61.817952078824	Nominal Roll [deg]
revision	3	Processing version of data
ontime	17620.399966091	Sum of GTIs [s]
livetime	17390.176468584	Livetime [s]
ontime0	17620.399966091	Sum of GTIs [s]
ontime1	17614.118005723	Sum of GTIs [s]
ontime2	17617.259005845	Sum of GTIs [s]
ontime3	17620.399966091	Sum of GTIs [s]
ontime6	17620.399966091	Sum of GTIs [s]
l2events	48589	Number of level 2 events



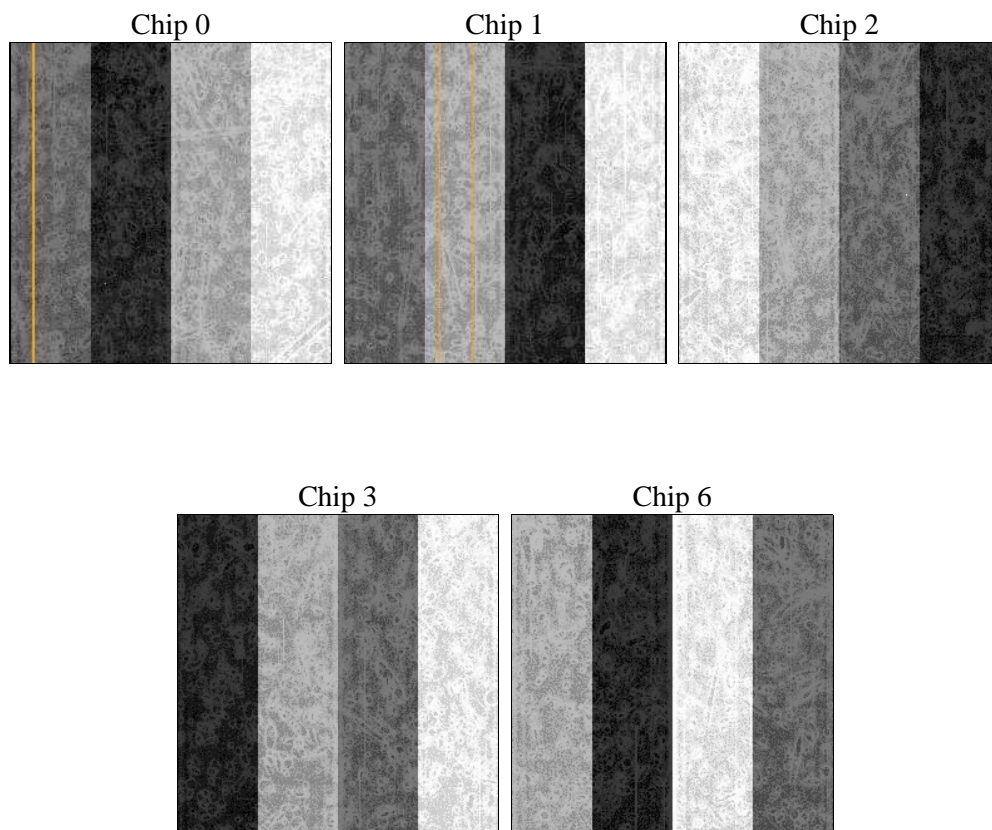
2 OBI

2.1 OBI

2.1.1 Images



2.1.2 Bias



2.1.3 Parameters

obi_num	0	Obi number	sched_exp_time	17460.709000	[s] Scheduled observation exposure time
ascdsver	8.5	Processing system revision	ontime	17620.399966091	Sum of GTIs [s]
caldbver	4.5.4	 	ontime0	17620.399966091	Sum of GTIs [s]
date	2012-12-12T13:31:43	Date and time of file creation	ontime1	17614.118005723	Sum of GTIs [s]
revision	3	Processing version of data	ontime2	17617.259005845	Sum of GTIs [s]
			ontime3	17620.399966091	Sum of GTIs [s]
			ontime6	17620.399966091	Sum of GTIs [s]
			l1events	595413	Number of level 1 events

2.1.4 Events

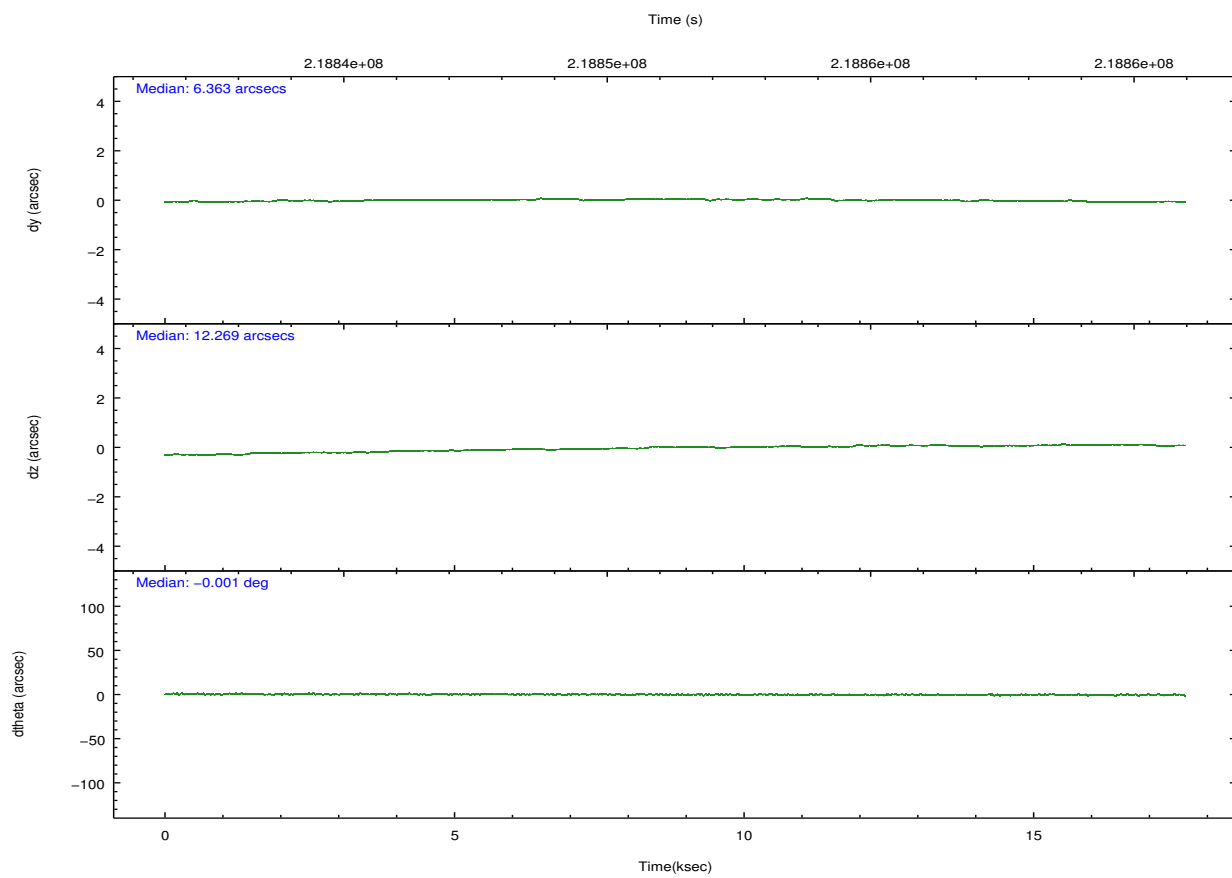
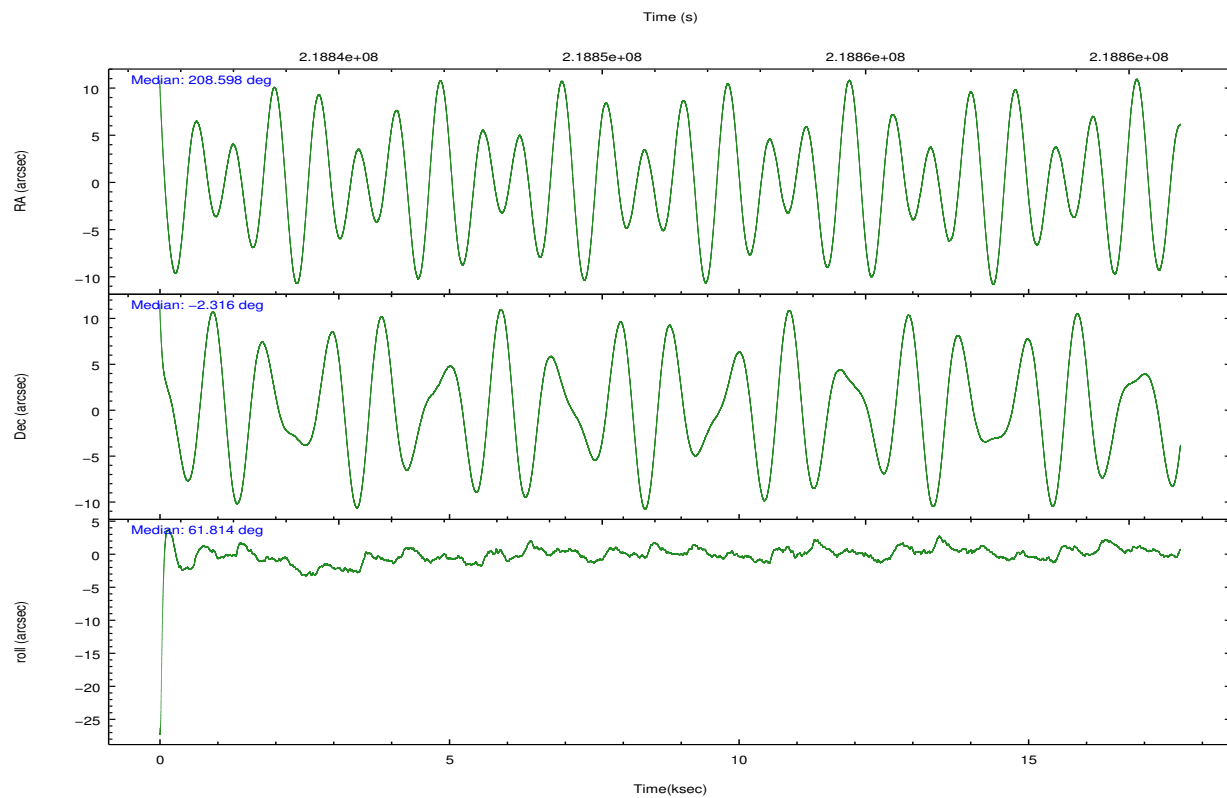
	ccd 0	ccd 1	ccd 2	ccd 3	ccd 6
level 1 events	110073	114229	127461	120605	123045
rejected events	98828	101592	116279	109494	110524
rejected %	89%	88%	91%	90%	89%

	ccd 0	ccd 1	ccd 2	ccd 3	ccd 6
grade 0 events	4412	5001	4301	4499	5197
	4%	4%	3%	3%	4%
grade 1 events	53	58	70	59	46
	0%	0%	0%	0%	0%
grade 2 events	2667	2900	2885	2412	2689
	2%	2%	2%	1%	2%
grade 3 events	1411	1474	1276	1315	1454
	1%	1%	1%	1%	1%
grade 4 events	1202	1437	1333	1245	1385
	1%	1%	1%	1%	1%
grade 5 events	4212	4517	3916	4801	4683
	3%	3%	3%	3%	3%
grade 6 events	2276	2713	2081	2327	2538
	2%	2%	1%	1%	2%
grade 7 events	93840	96129	111599	103947	105053
	85%	84%	87%	86%	85%

2.2 Compared Parameters

Parameter	Planned	Actual	Parameter	Planned	Actual
Instrument	ACIS	ACIS	Obspar format version number	7	7
Detector	ACIS-01236	ACIS-01236	Obspar file type	PREDICTED	ACTUAL
Grating	NONE	NONE	Obspar update status	NONE	UPDATED
Data mode	VFAINT	VFAINT	Number of optional ACIS chips dropped	0	0
Observation mode	POINTING	POINTING	On-chip summing requested	N	N
[deg] Pointing RA	208.598806	208.5978138129778	Subarray requested	NONE	NONE
[deg] Pointing Dec	-2.343528	-2.316168840276179	Alternating exposures requested	N	N
[deg] Pointing Roll	61.609338	61.81795207882357	[s] Primary exposure time	0.000000	3.1
[mm] SIM focus pos	-0.782348	-0.7809083437167272			
[mm] SIM defocus	0	0.001439871863259334			
[mm] SIM translation stage pos	-225.840463	-225.8433433320239			
[mm] SIM translation stage offset	-7.752	-7.749109670905796			
[s] Observation start time (MET)	218842642.184000	218841093.39318			
Observation start date	2004-12-07T21:36:18	2004-12-07T21:11:33			
[s] Observation end time (MET)	218860103.184000	218860339.30654			
Observation end date	2004-12-08T02:27:19	2004-12-08T02:32:19			
Read mode	TIMED	TIMED			

2.3 Aspect

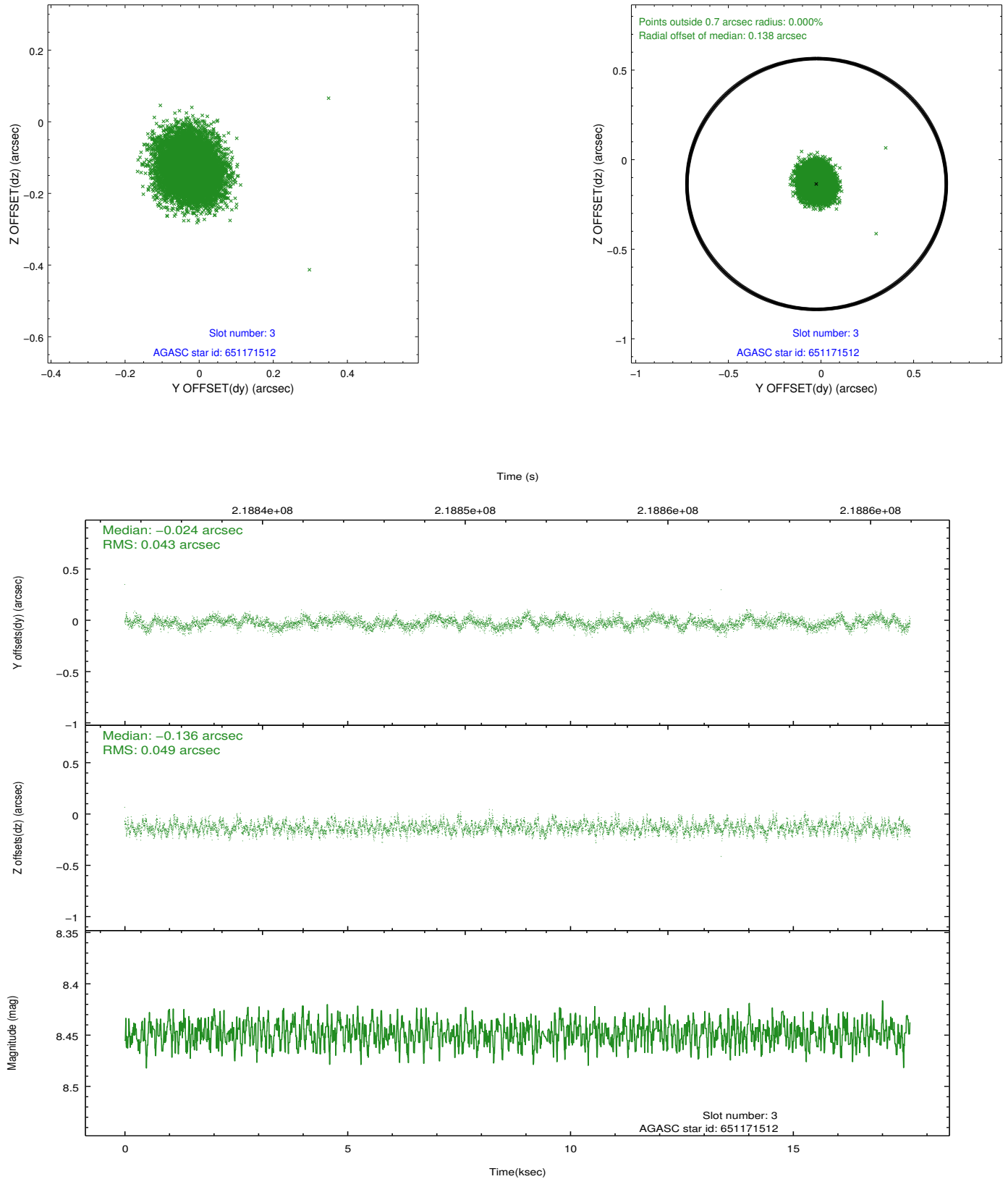


Slot Statistics

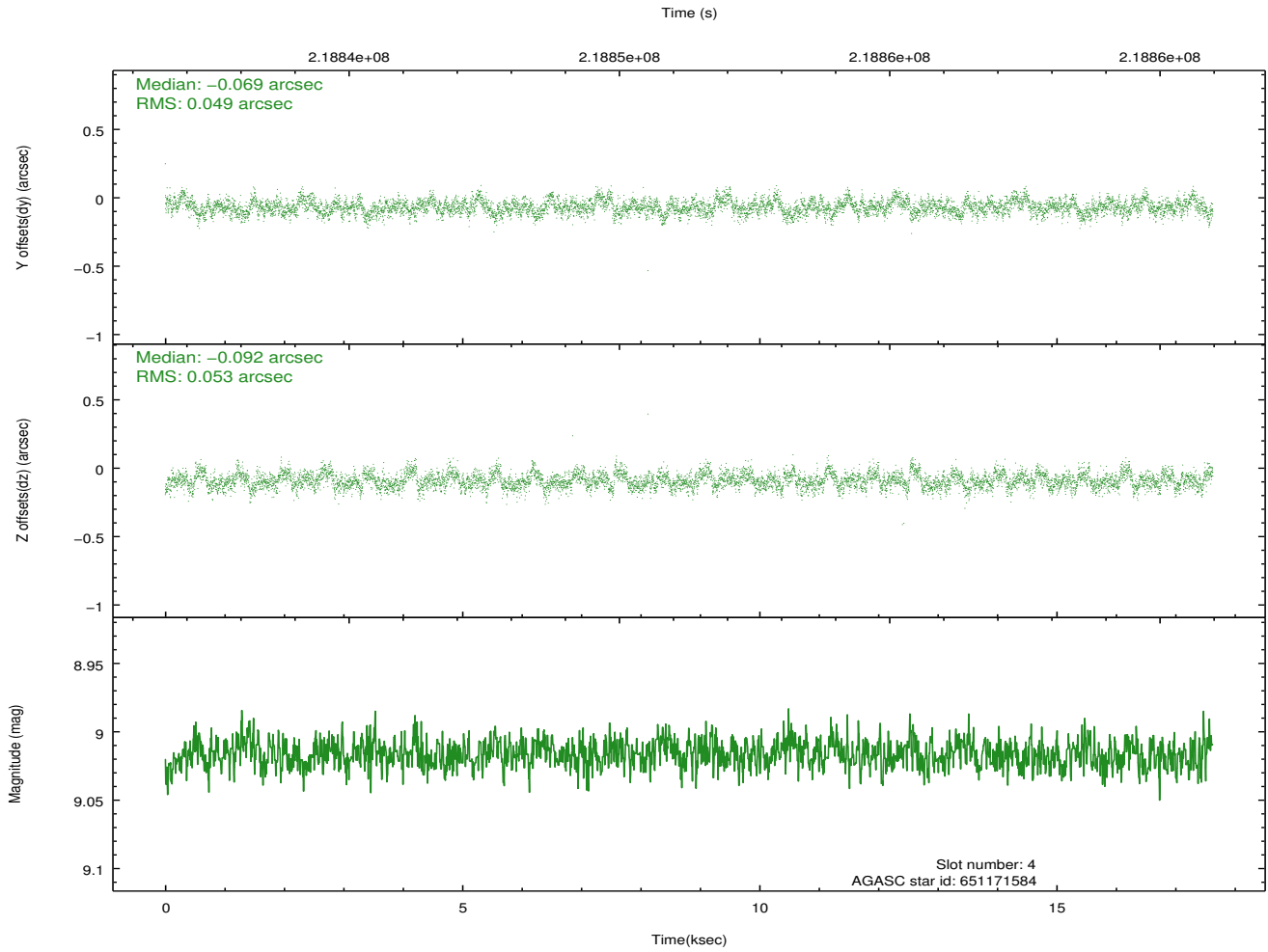
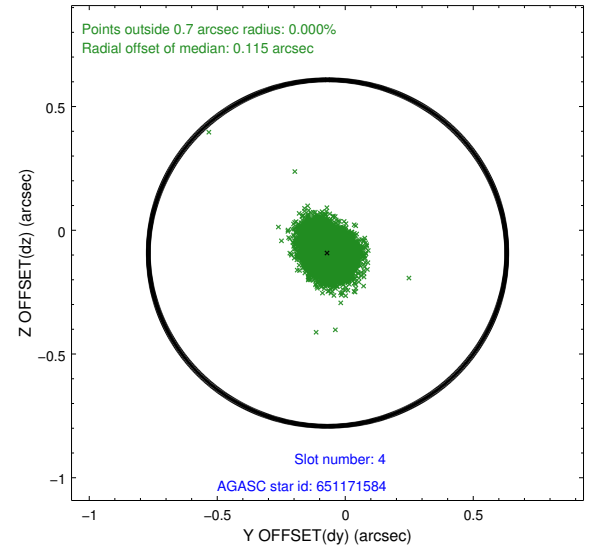
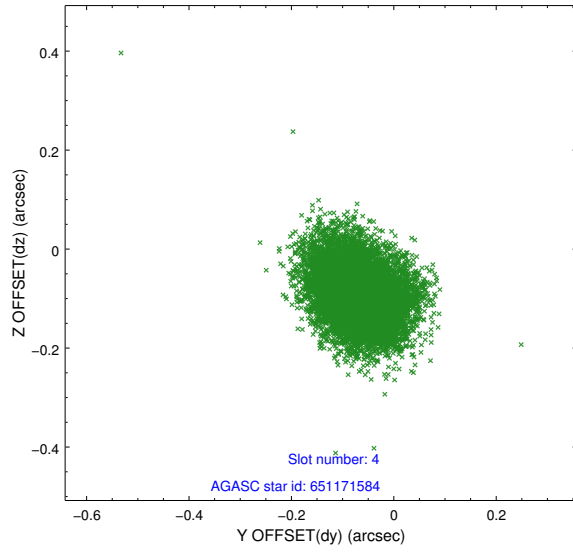
slot	status	id	mag	n_pts	med_dy	med_dz	dr1	dr2	ra	dec	mean_y	mean_z
0	FID	ACIS-I-1	7.23	4300	0.125	-0.091	0.008	0.015	0.000000	0.000000	933.30	-994.94
1	FID	ACIS-I-5	7.22	4300	-0.227	0.118	0.006	0.011	0.000000	0.000000	-1814.99	902.65
2	FID	ACIS-I-6	7.25	4299	0.010	0.044	0.007	0.012	0.000000	0.000000	398.52	1547.31
3	GUIDE	651171512	8.45	8597	-0.024	-0.136	0.069	0.111	208.530490	-1.965561	1079.99	863.33
4	GUIDE	651171584	9.02	8598	-0.069	-0.092	0.077	0.125	208.290295	-2.205223	-89.62	1213.05
5	GUIDE	651172128	8.99	8598	0.001	0.140	0.075	0.120	208.716005	-2.380357	83.92	-433.51
6	GUIDE	651559472	8.54	8596	0.156	0.108	0.068	0.108	208.584808	-3.005162	-2119.37	-1088.32
7	GUIDE	651167608	9.49	8592	-0.063	-0.025	0.095	0.155	208.411734	-1.473172	2436.06	2082.19

2.4 Star Slots

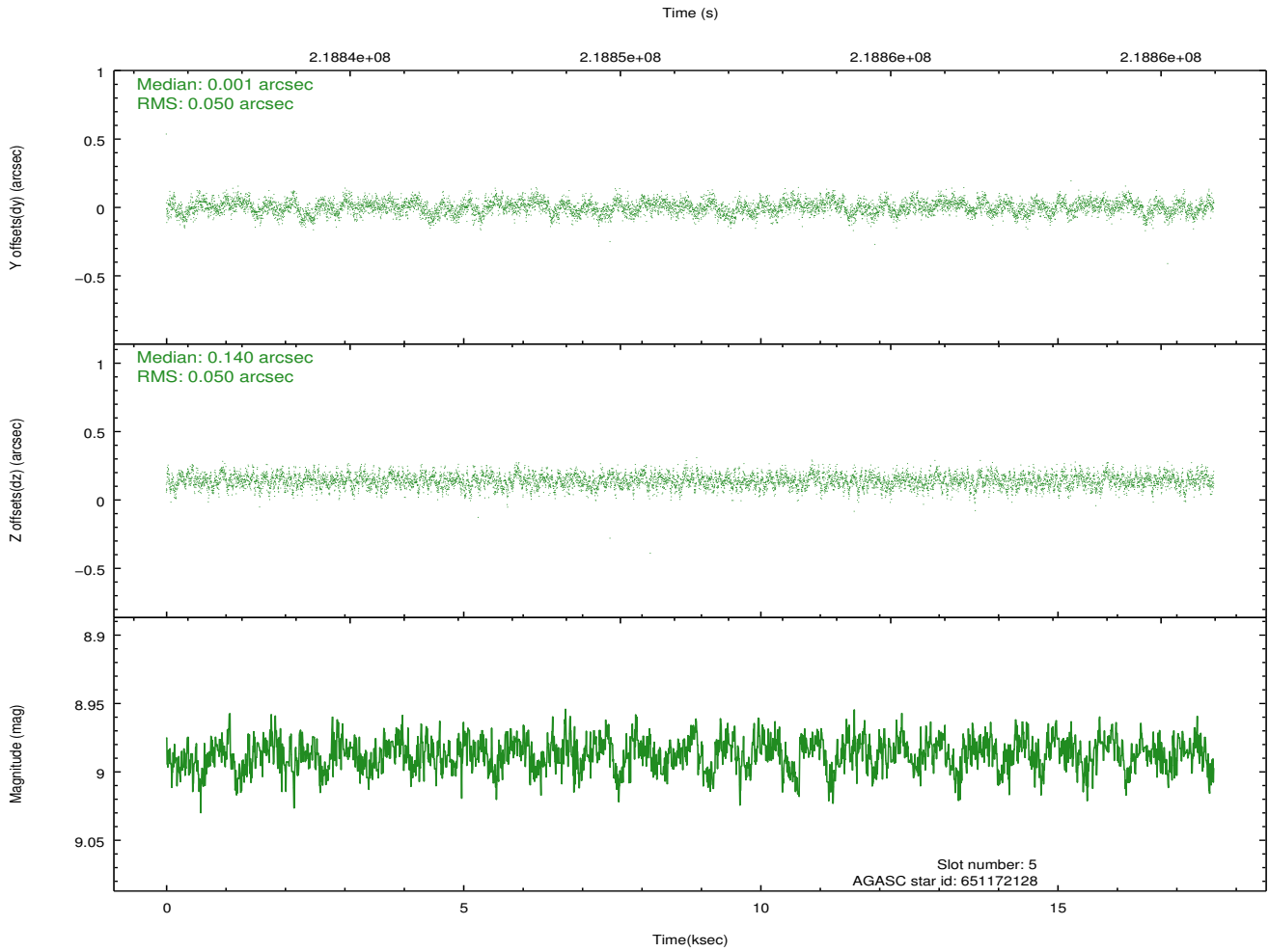
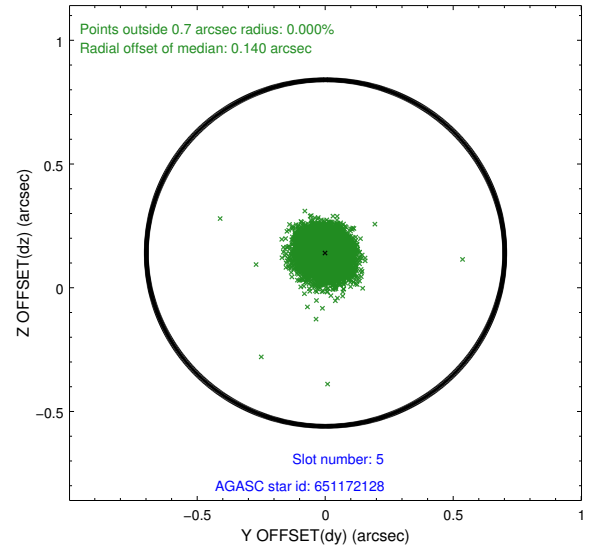
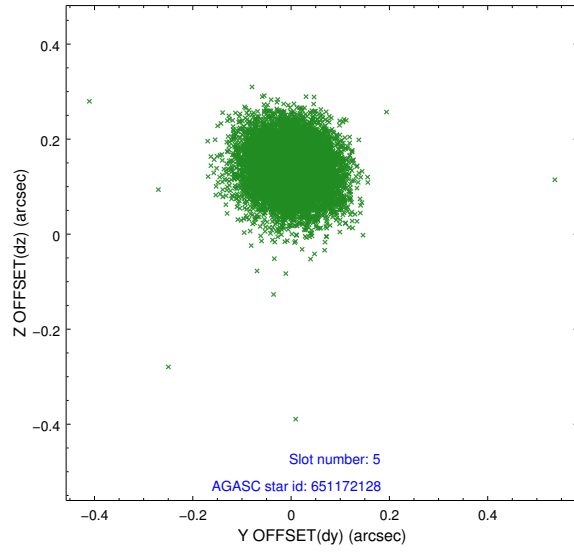
2.4.1 Slot 3



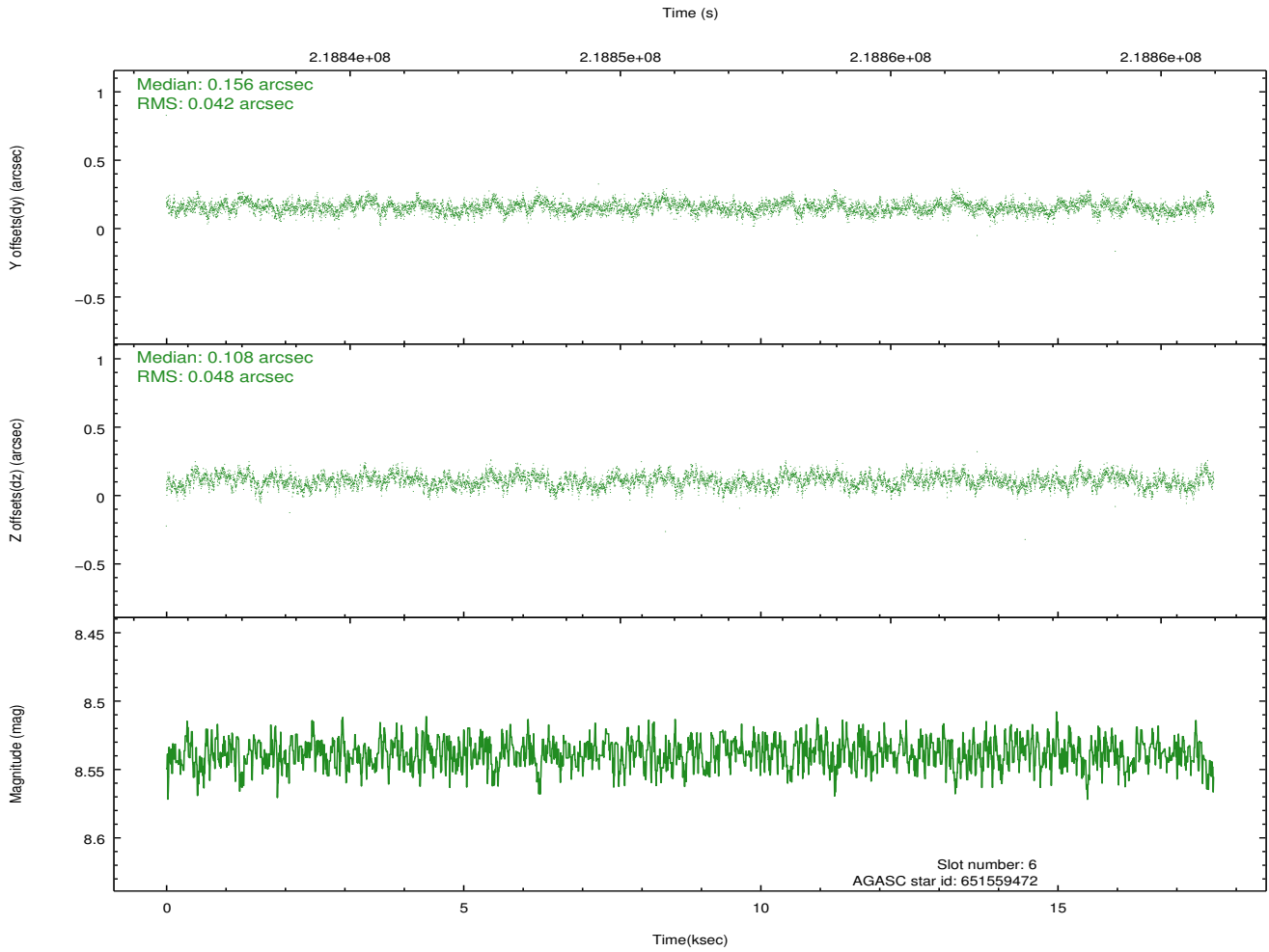
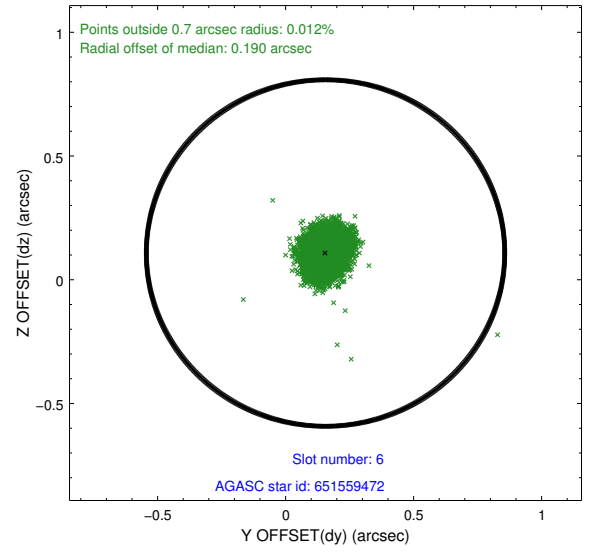
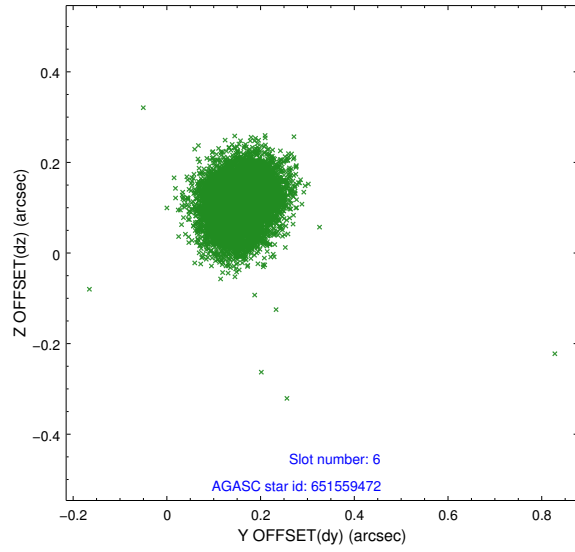
2.4.2 Slot 4



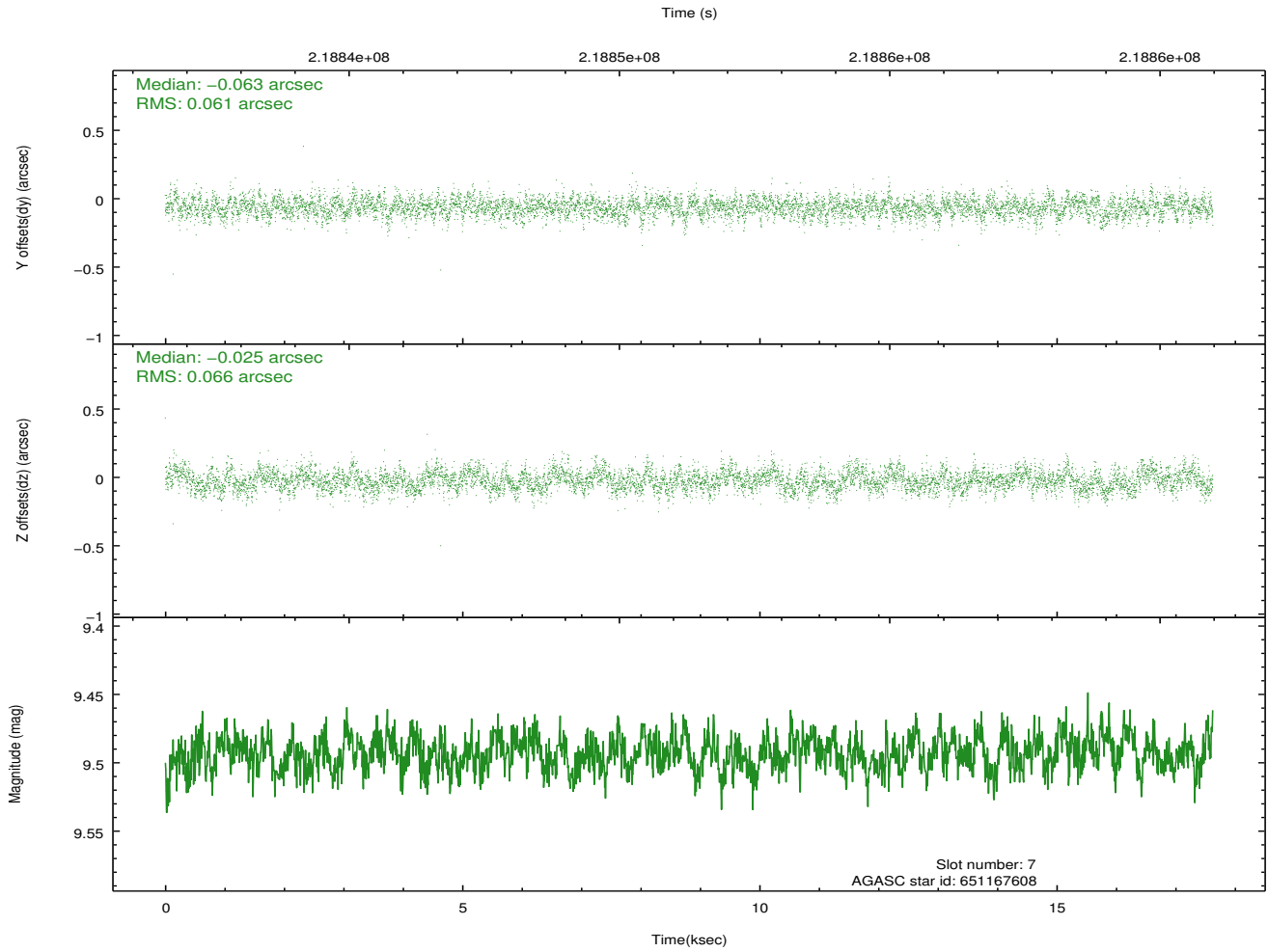
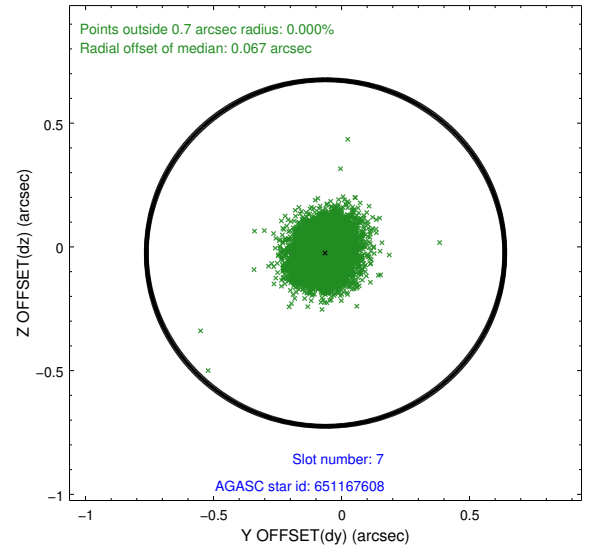
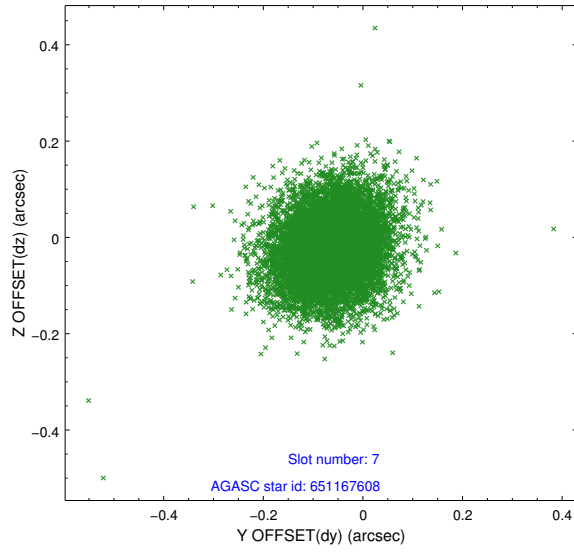
2.4.3 Slot 5



2.4.4 Slot 6

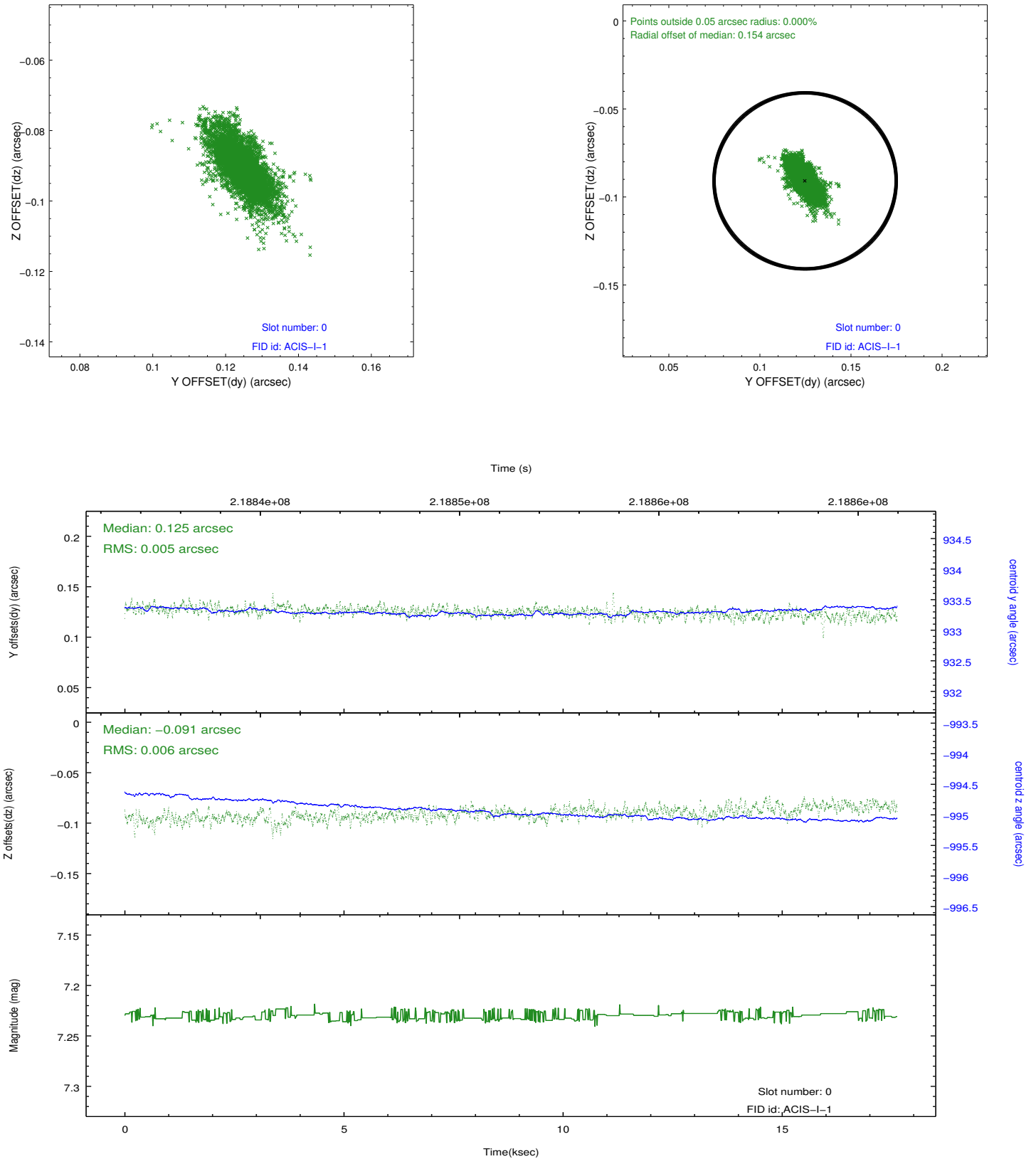


2.4.5 Slot 7

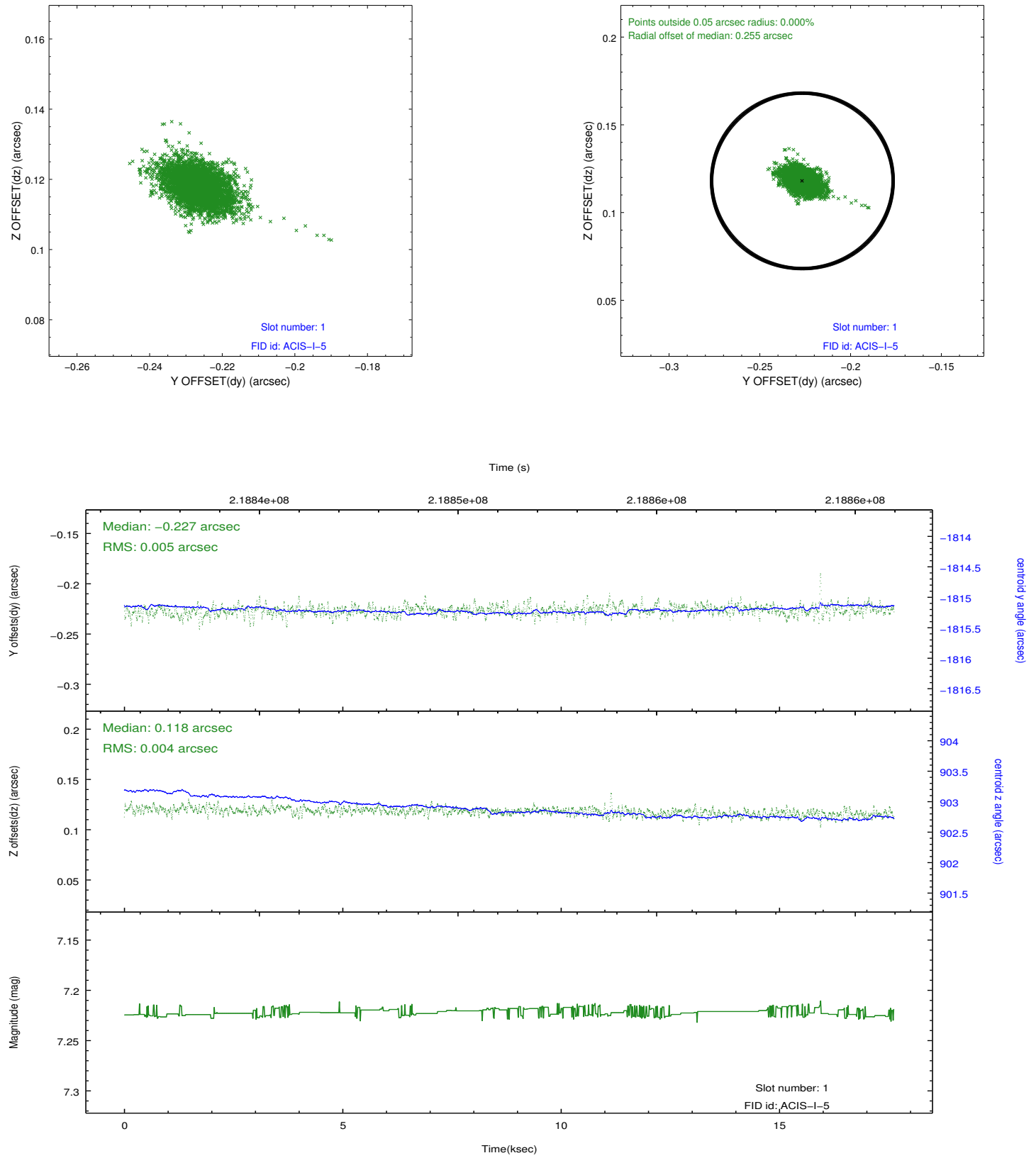


2.5 FID Slots

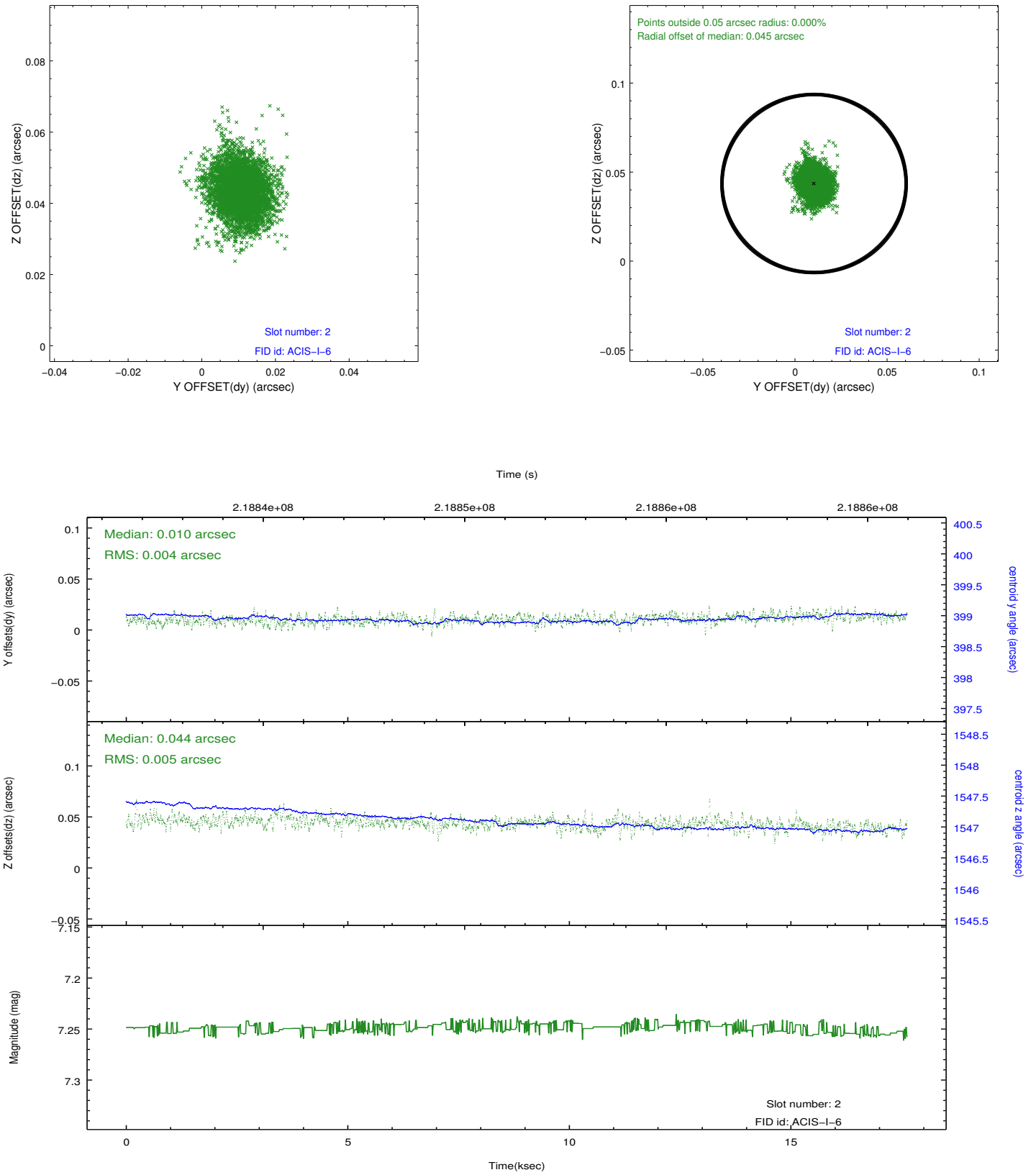
2.5.1 Slot 0



2.5.2 Slot 1



2.5.3 Slot 2



A Summary

A.1 Status

V&V Scientist	Jen Lauer
V&V Date (YYYY-MM-DD)	2013.01.04
V&V Edition	1
V&V Disposition and Status	OK
V&V Charge Time	17.62039

A.2 Comments