

V&V Reference Report

L2 ASCDS Version : 8.5.1

Observation 4928 - L2 Version 3
Chandra X-Ray Center

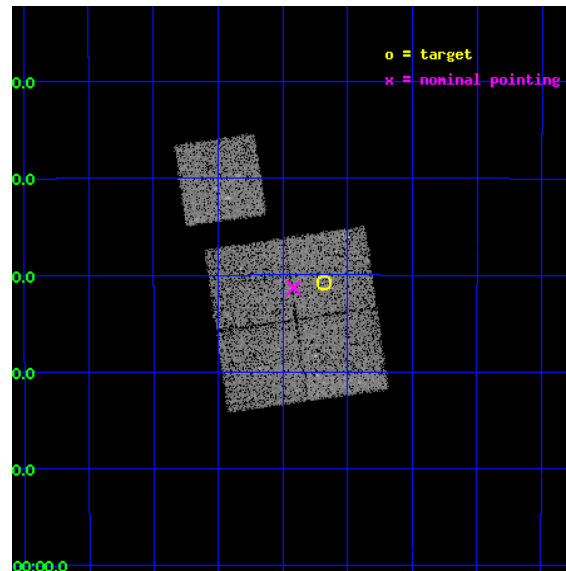
L2 Processing Date : Dec 14 2012

Contents

1	Front	2
2	OBI	3
2.1	OBI	3
2.1.1	Images	3
2.1.2	Bias	3
2.1.3	Parameters	4
2.1.4	Events	4
2.2	Compared Parameters	5
2.3	Aspect	6
2.4	Star Slots	9
2.4.1	Slot 3	9
2.4.2	Slot 4	10
2.4.3	Slot 5	11
2.4.4	Slot 6	12
2.4.5	Slot 7	13
2.5	FID Slots	14
2.5.1	Slot 0	14
2.5.2	Slot 1	15
2.5.3	Slot 2	16
A	Summary	17
A.1	Status	17
A.2	Comments	17

1 Front

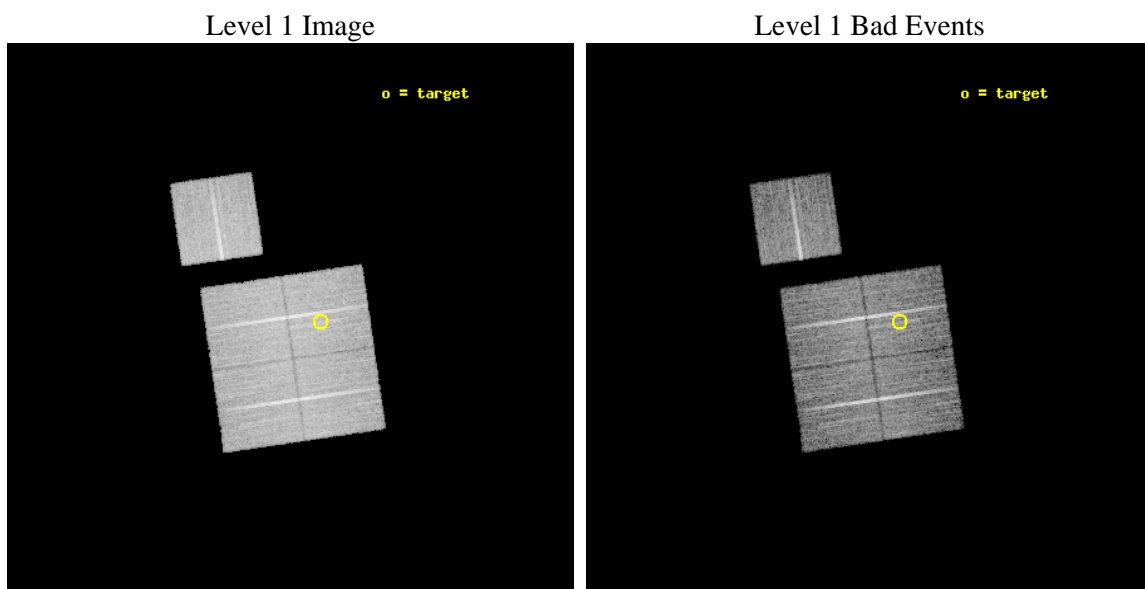
seq_num	800379	Sequence number
obs_id	4928	Observation id
title	Chandra snapshot survey of 10 distant clusters of galaxies	Proposa
observer	Dr. Stephen Murray	Principal investigator
object	CL0521-2530	Source name
dtcycle	0	
cycle	P	events from which exps? Prim/Second/Both
ra_targ	80.294583	Observer's specified target RA [deg]
dec_targ	-25.512222	Observer's specified target Dec [deg]
ra_nom	80.353796757426	Nominal RA [deg]
dec_nom	-25.521997692649	Nominal Dec [deg]
roll_nom	351.73419095595	Nominal Roll [deg]
revision	3	Processing version of data
ontime	14135.695262849	Sum of GTIs [s]
livetime	13951.001997693	Livetime [s]
ontime0	14138.713133067	Sum of GTIs [s]
ontime1	14138.75417307	Sum of GTIs [s]
ontime2	14138.795213073	Sum of GTIs [s]
ontime3	14135.695262849	Sum of GTIs [s]
ontime6	14138.672093064	Sum of GTIs [s]
l2events	39187	Number of level 2 events



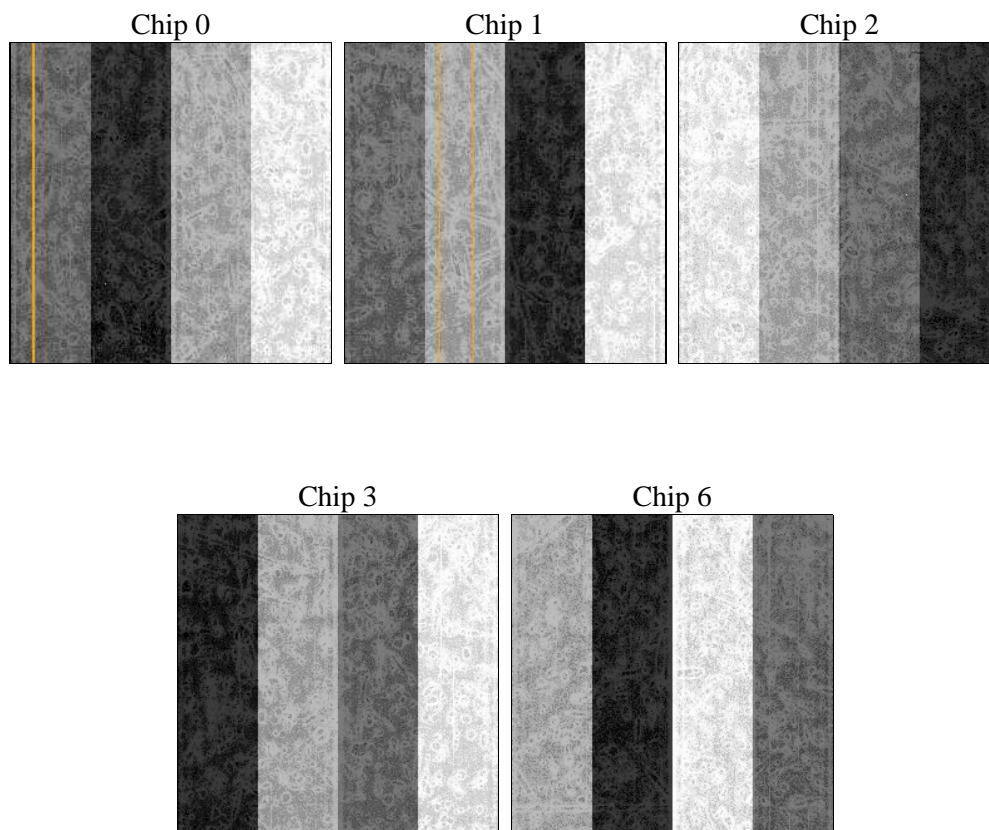
2 OBI

2.1 OBI

2.1.1 Images



2.1.2 Bias



2.1.3 Parameters

obi_num	1	Obi number	sched_exp_time	14000.000000	[s] Scheduled observation exposure time
ascdsver	8.5.1	Processing system revision	ontime	14135.695262849	Sum of GTIs [s]
caldsver	4.5.5	 	ontime0	14138.713133067	Sum of GTIs [s]
date	2012-12-14T20:39:13	Date and time of file creation	ontime1	14138.75417307	Sum of GTIs [s]
revision	3	Processing version of data	ontime2	14138.795213073	Sum of GTIs [s]
			ontime3	14135.695262849	Sum of GTIs [s]
			ontime6	14138.672093064	Sum of GTIs [s]
			l1events	458403	Number of level 1 events

2.1.4 Events

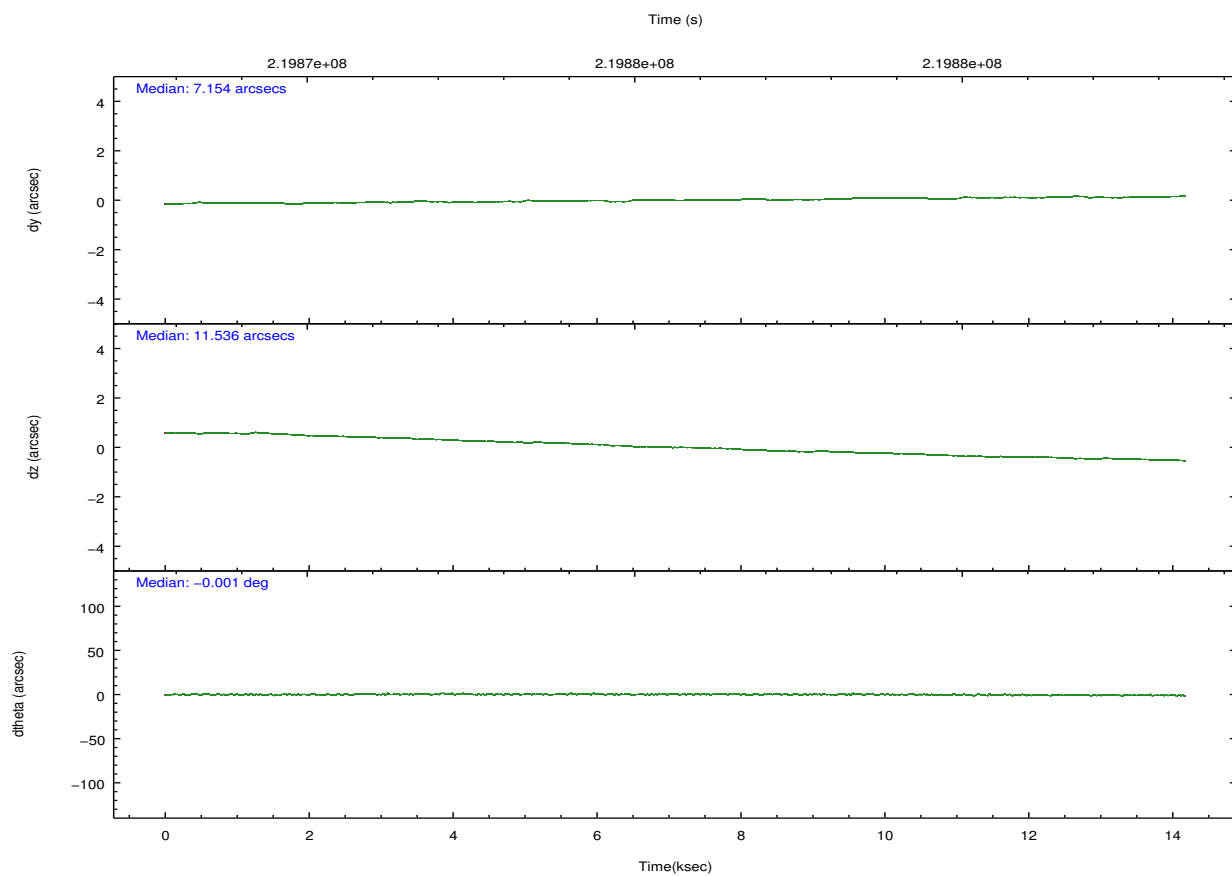
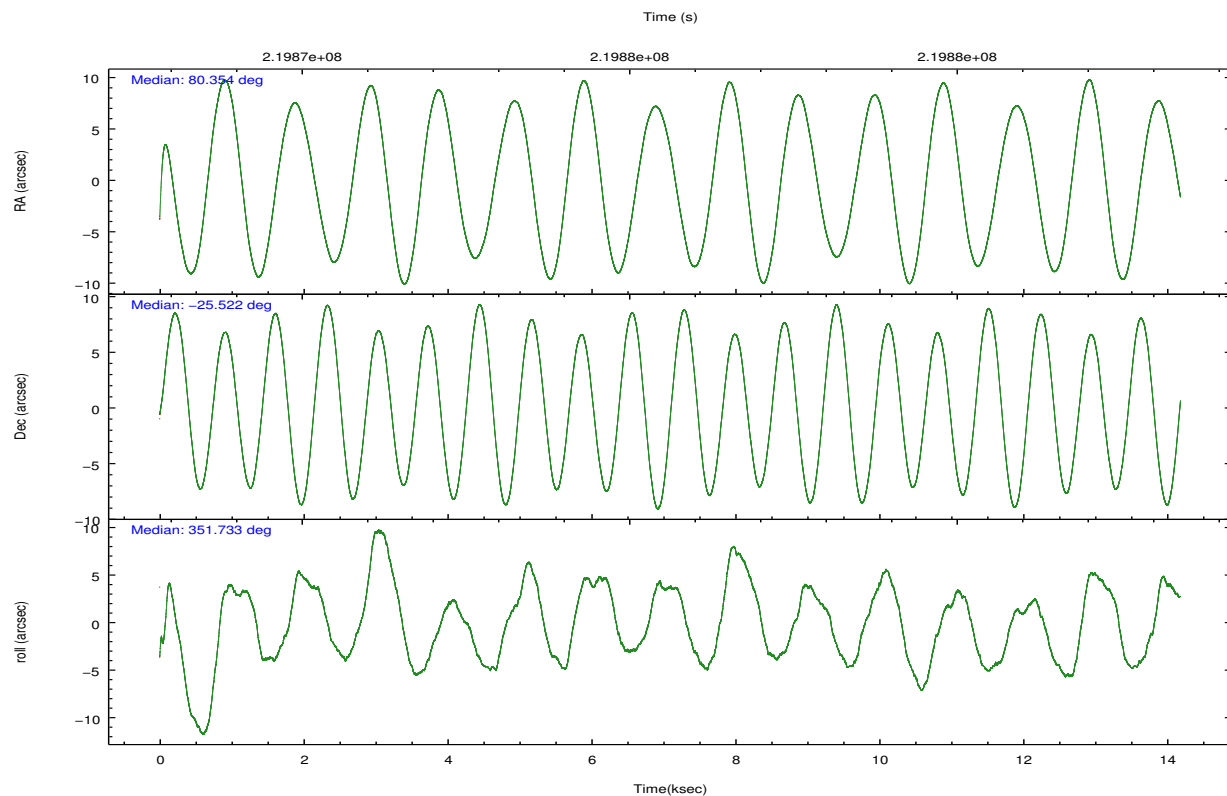
	ccd 0	ccd 1	ccd 2	ccd 3	ccd 6
level 1 events	88641	87156	95981	92434	94191
rejected events	79413	77027	86811	83234	84628
rejected %	89%	88%	90%	90%	89%

	ccd 0	ccd 1	ccd 2	ccd 3	ccd 6
grade 0 events	3174	3690	3307	3503	3423
	3%	4%	3%	3%	3%
grade 1 events	43	52	50	48	62
	0%	0%	0%	0%	0%
grade 2 events	2198	2125	2128	1878	2031
	2%	2%	2%	2%	2%
grade 3 events	1125	1134	1045	1014	1070
	1%	1%	1%	1%	1%
grade 4 events	995	1076	1043	1043	1072
	1%	1%	1%	1%	1%
grade 5 events	3131	3506	3010	3612	3682
	3%	4%	3%	3%	3%
grade 6 events	1740	2110	1650	1766	1972
	1%	2%	1%	1%	2%
grade 7 events	76235	73463	83748	79570	80879
	86%	84%	87%	86%	85%

2.2 Compared Parameters

Parameter	Planned	Actual	Parameter	Planned	Actual
Instrument	ACIS	ACIS	Obspar format version number	7	7
Detector	ACIS-01236	ACIS-01236	Obspar file type	PREDICTED	ACTUAL
Grating	NONE	NONE	Obspar update status	NONE	UPDATED
Data mode	VFAINT	VFAINT	Number of optional ACIS chips dropped	0	0
Observation mode	POINTING	POINTING	On-chip summing requested	N	N
[deg] Pointing RA	80.325628	80.35379675742587	Subarray requested	NONE	NONE
[deg] Pointing Dec	-25.532245	-25.52199769264869	Alternating exposures requested	N	N
[deg] Pointing Roll	351.513361	351.7341909559518	[s] Primary exposure time	0.000000	3.1
[mm] SIM focus pos	-0.782348	-0.7809083437167272			
[mm] SIM defocus	0	0.001439871863259334			
[mm] SIM translation stage pos	-225.840463	-225.8433433320239			
[mm] SIM translation stage offset	-7.752	-7.749109670905796			
[s] Observation start time (MET)	219868704.184000	219867731.38938			
Observation start date	2004-12-19T18:37:20	2004-12-19T18:22:11			
[s] Observation end time (MET)	219882704.184000	219883456.94009			
Observation end date	2004-12-19T22:30:40	2004-12-19T22:44:16			
Read mode	TIMED	TIMED			

2.3 Aspect

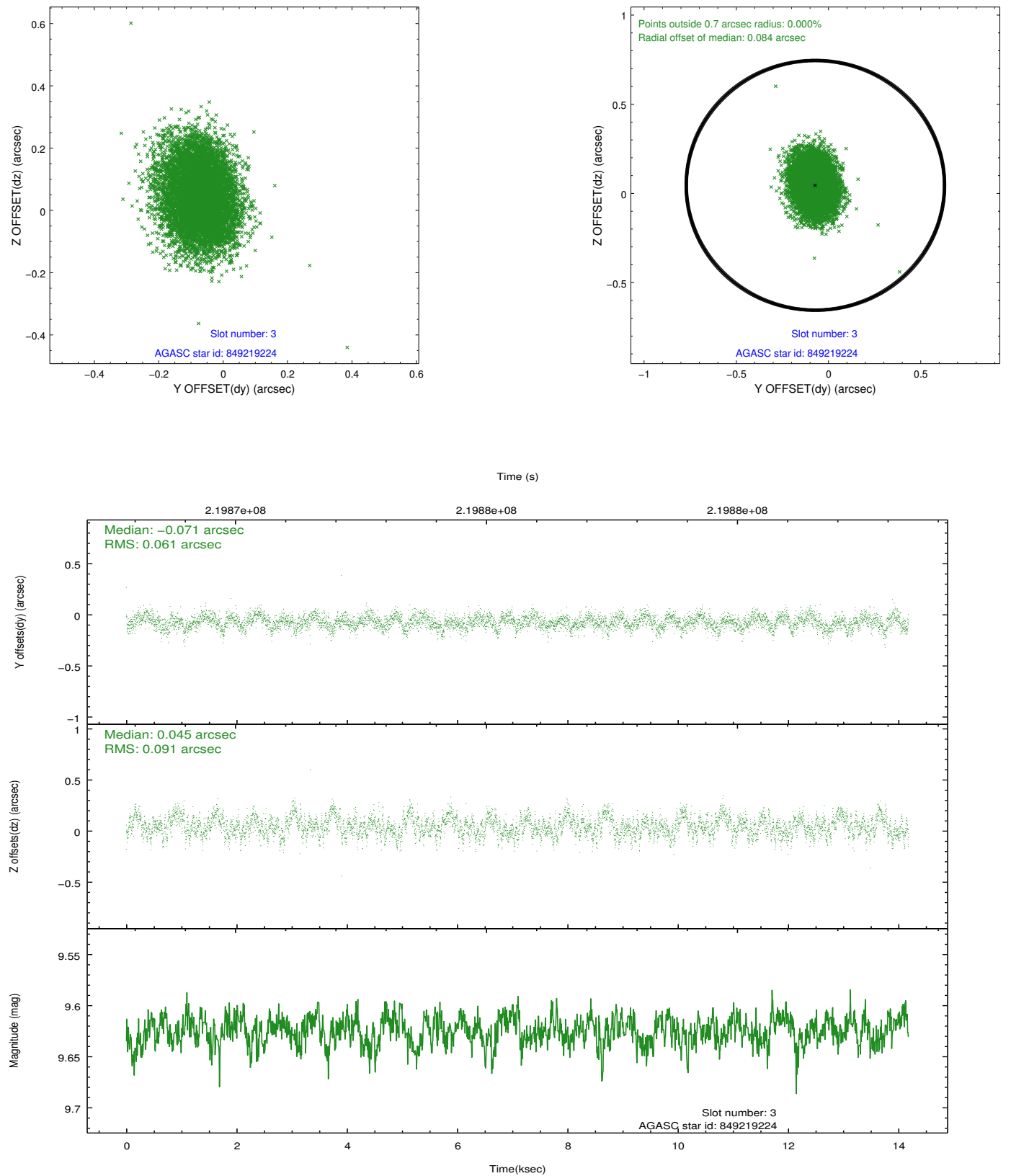


Slot Statistics

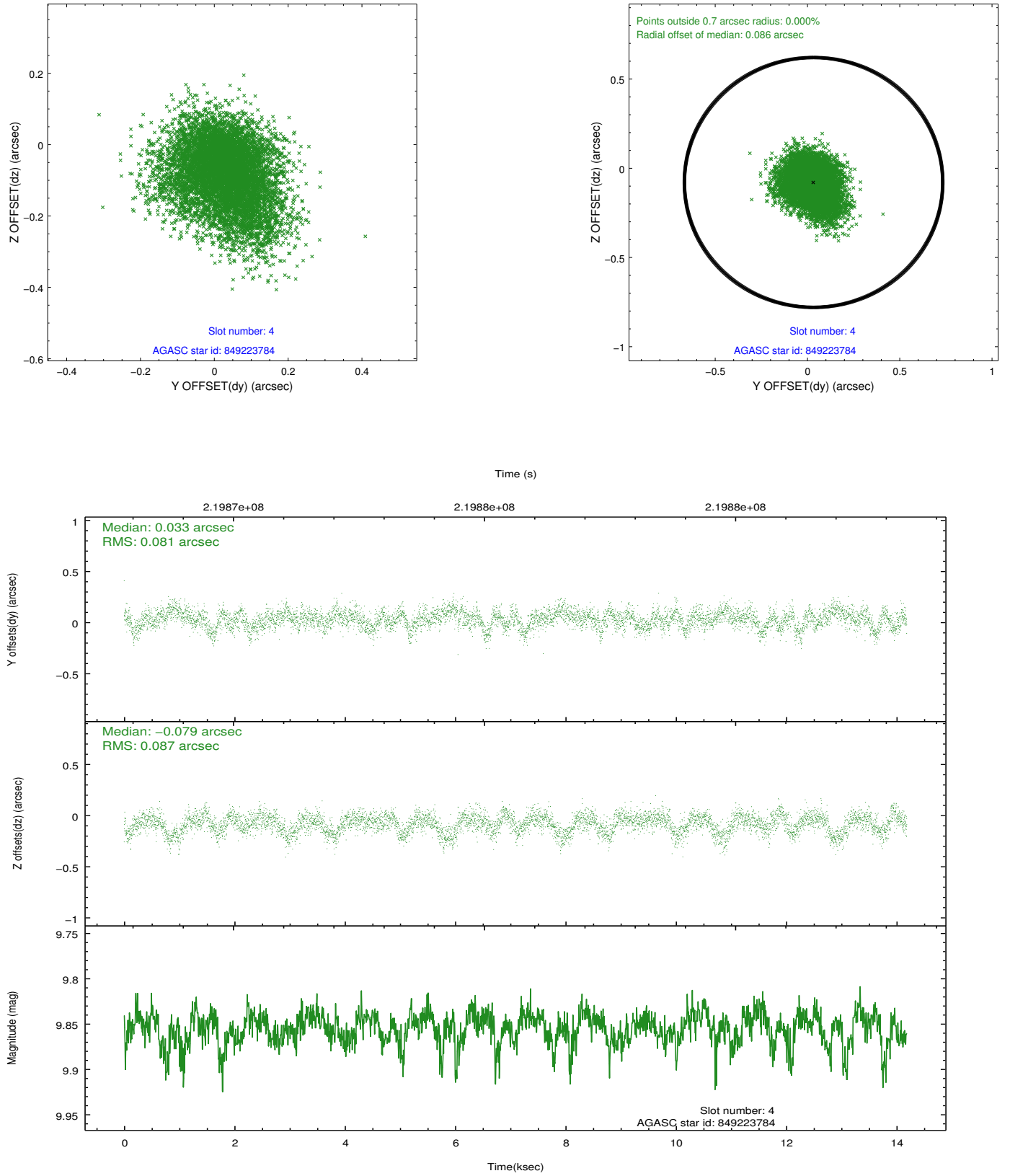
slot	status	id	mag	n_pts	med_dy	med_dz	dr1	dr2	ra	dec	mean_y	mean_z
0	FID	ACIS-I-1	7.23	3460	0.121	-0.106	0.011	0.019	0.000000	0.000000	932.47	-994.27
1	FID	ACIS-I-5	7.22	3460	-0.212	0.114	0.008	0.012	0.000000	0.000000	-1815.74	903.28
2	FID	ACIS-I-6	7.25	3460	-0.001	0.061	0.014	0.022	0.000000	0.000000	397.59	1548.06
3	GUIDE	849219224	9.62	6910	-0.071	0.045	0.116	0.190	79.917999	-26.007007	-1051.64	-1886.92
4	GUIDE	849223784	9.85	6915	0.033	-0.079	0.126	0.207	80.444618	-25.367658	295.58	642.77
5	GUIDE	849226272	8.40	6846	0.029	0.120	0.063	0.099	80.214822	-25.538553	-352.26	-75.28
6	BAD	849226688	5.45	3458	0.147	-0.237	0.067	0.099	79.879916	-25.124188	-1653.30	1235.90
7	GUIDE	849221808	9.98	6911	-0.056	0.037	0.125	0.202	81.008696	-25.199789	2024.88	1506.94

2.4 Star Slots

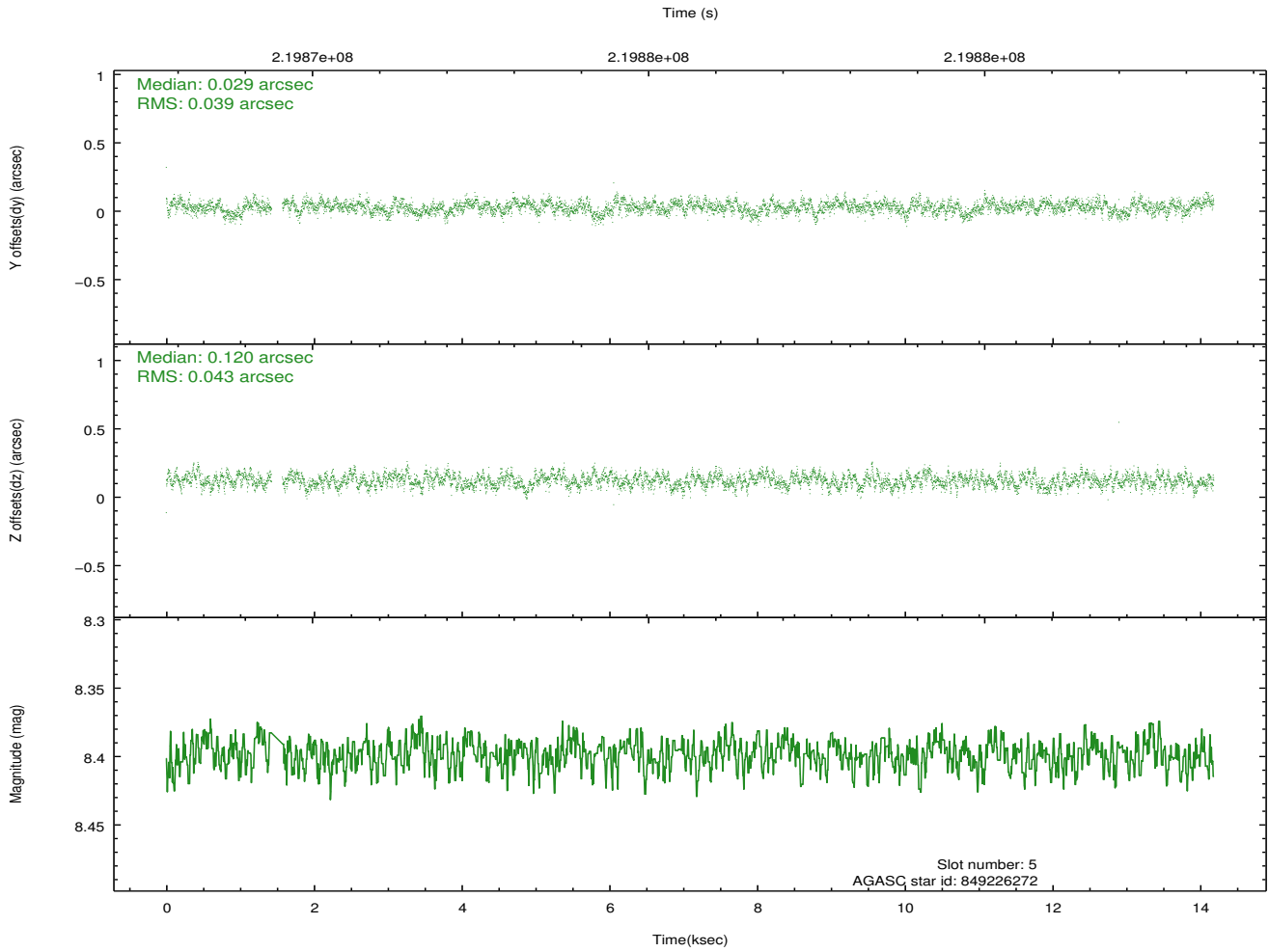
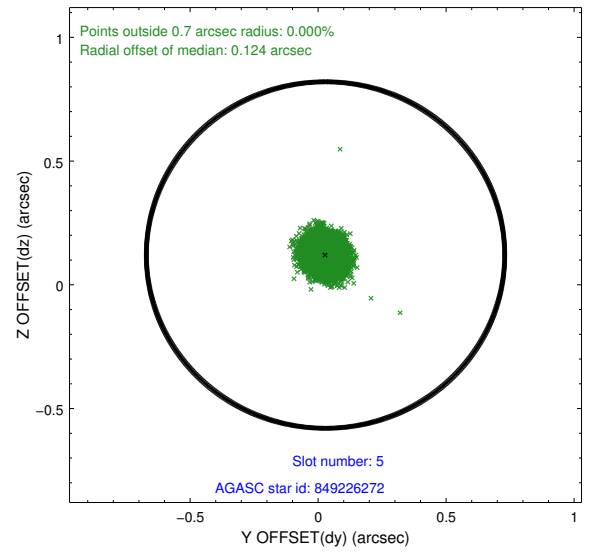
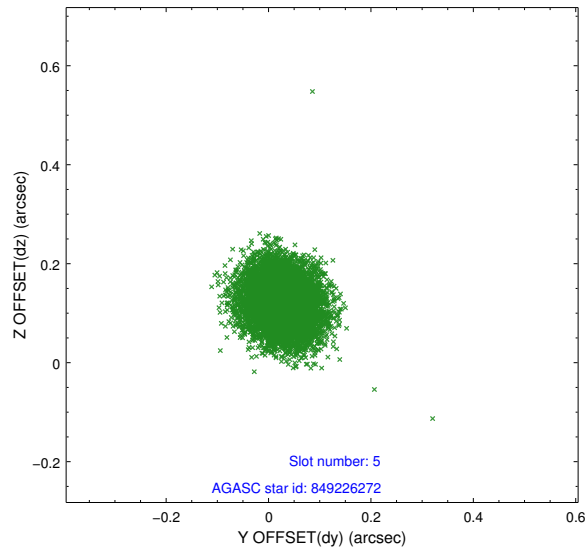
2.4.1 Slot 3



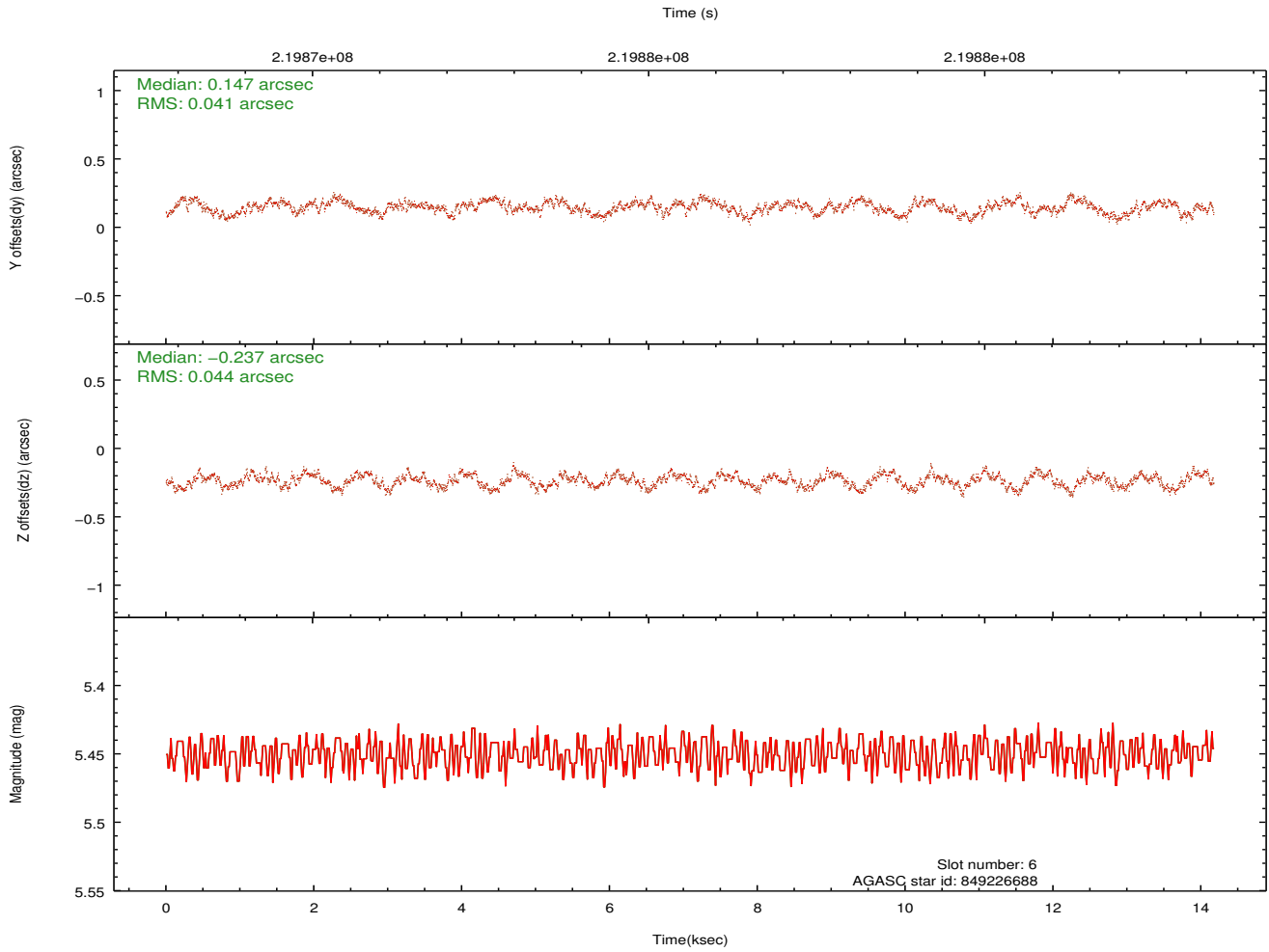
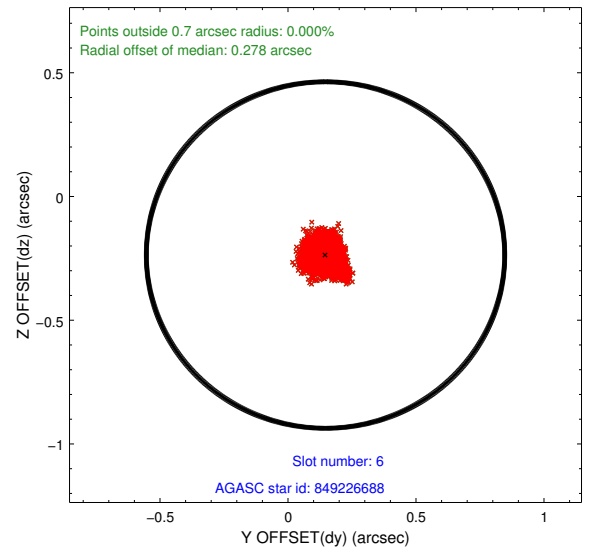
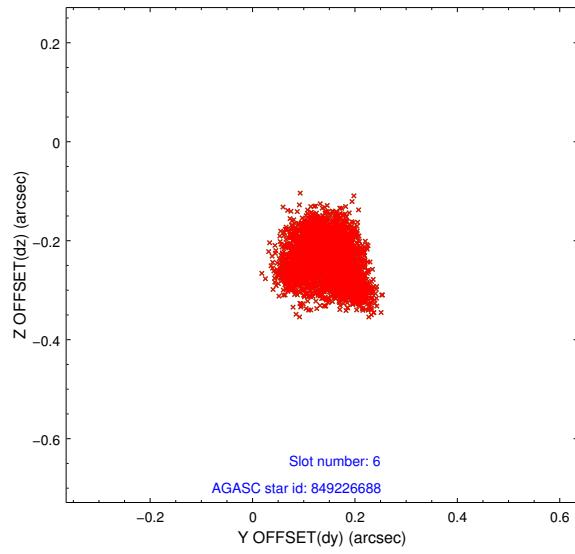
2.4.2 Slot 4



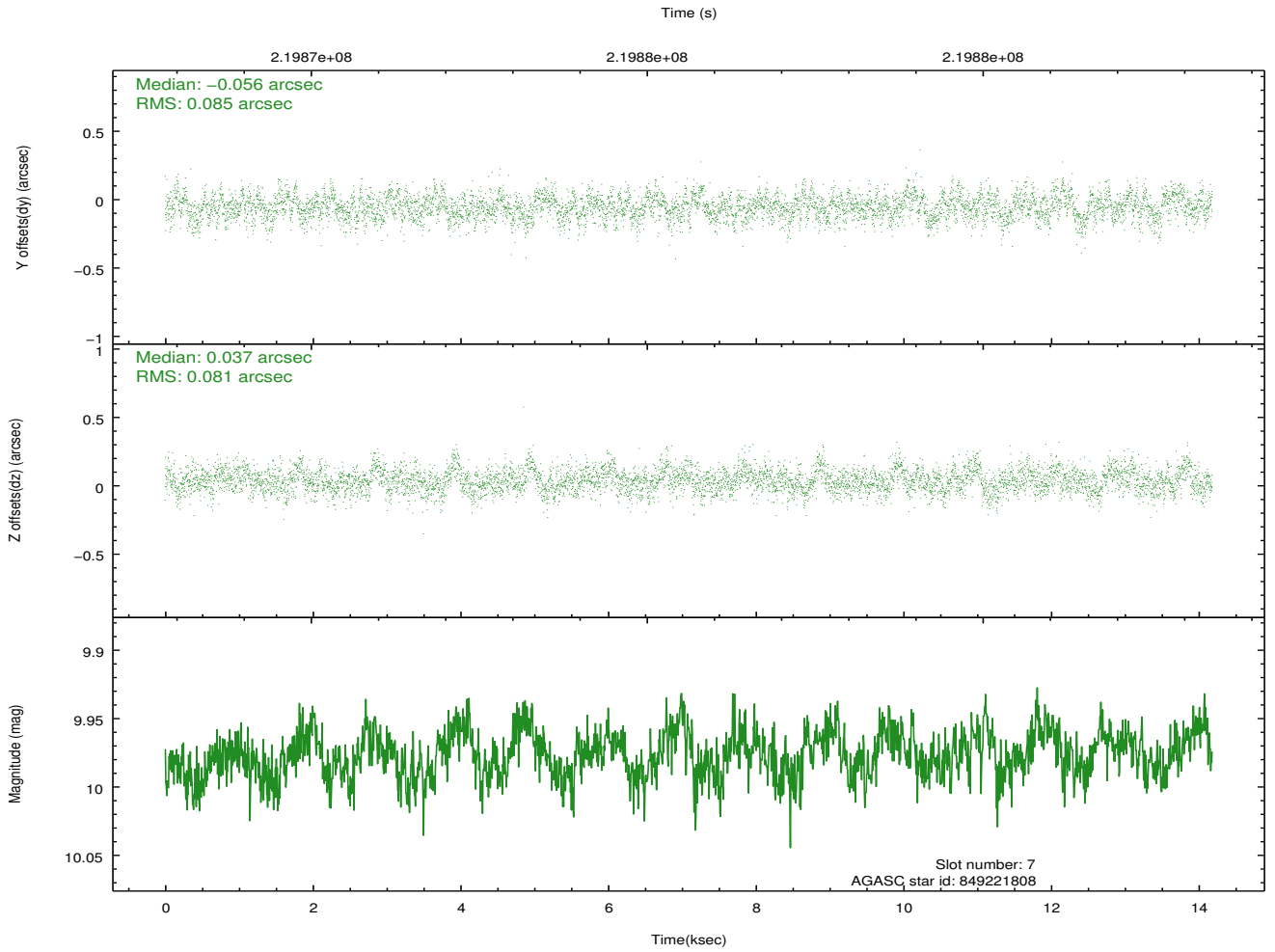
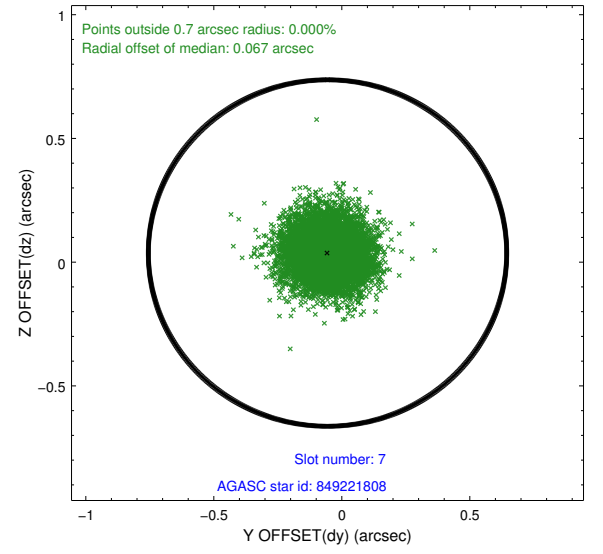
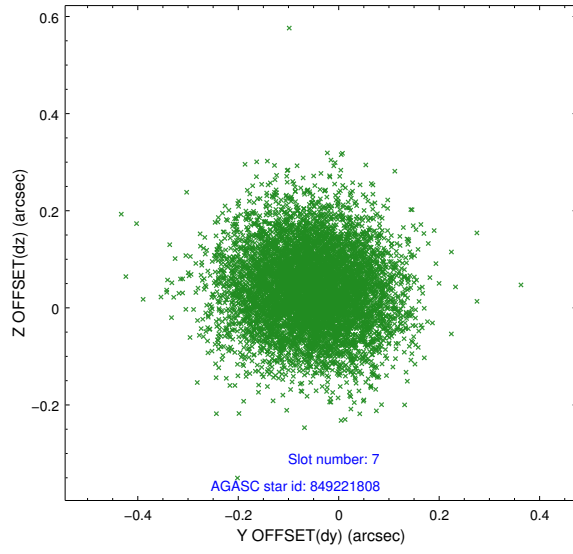
2.4.3 Slot 5



2.4.4 Slot 6

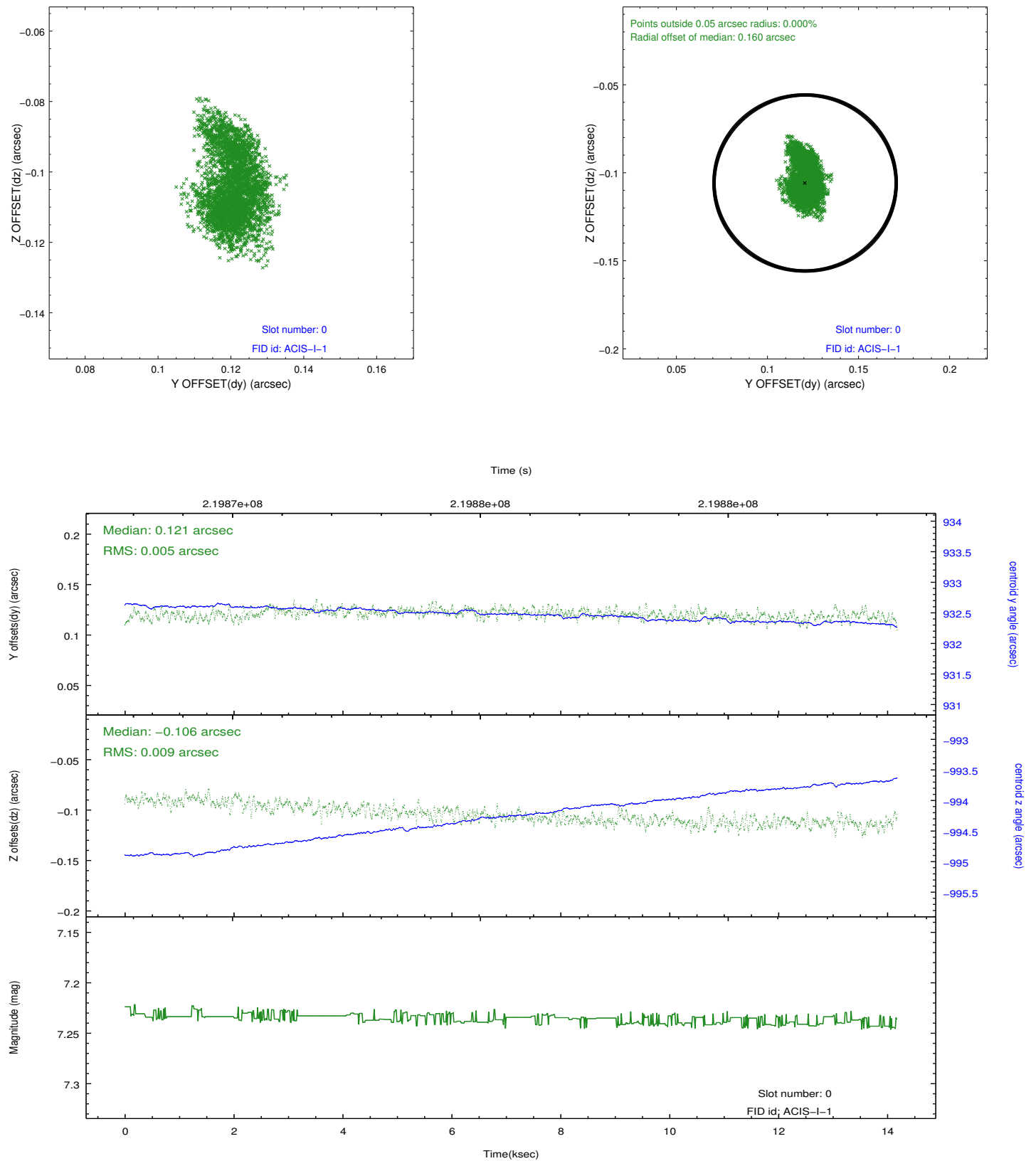


2.4.5 Slot 7

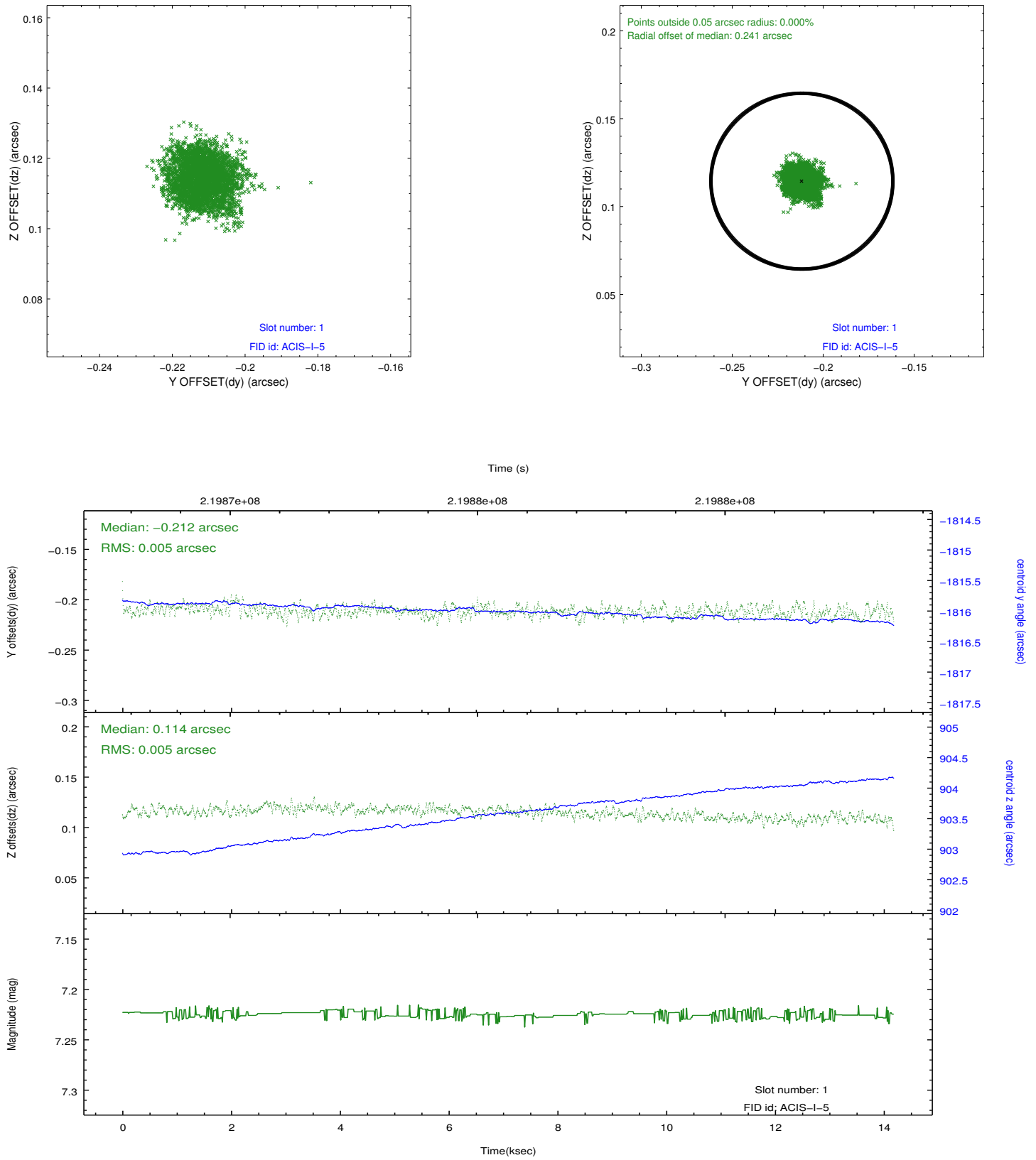


2.5 FID Slots

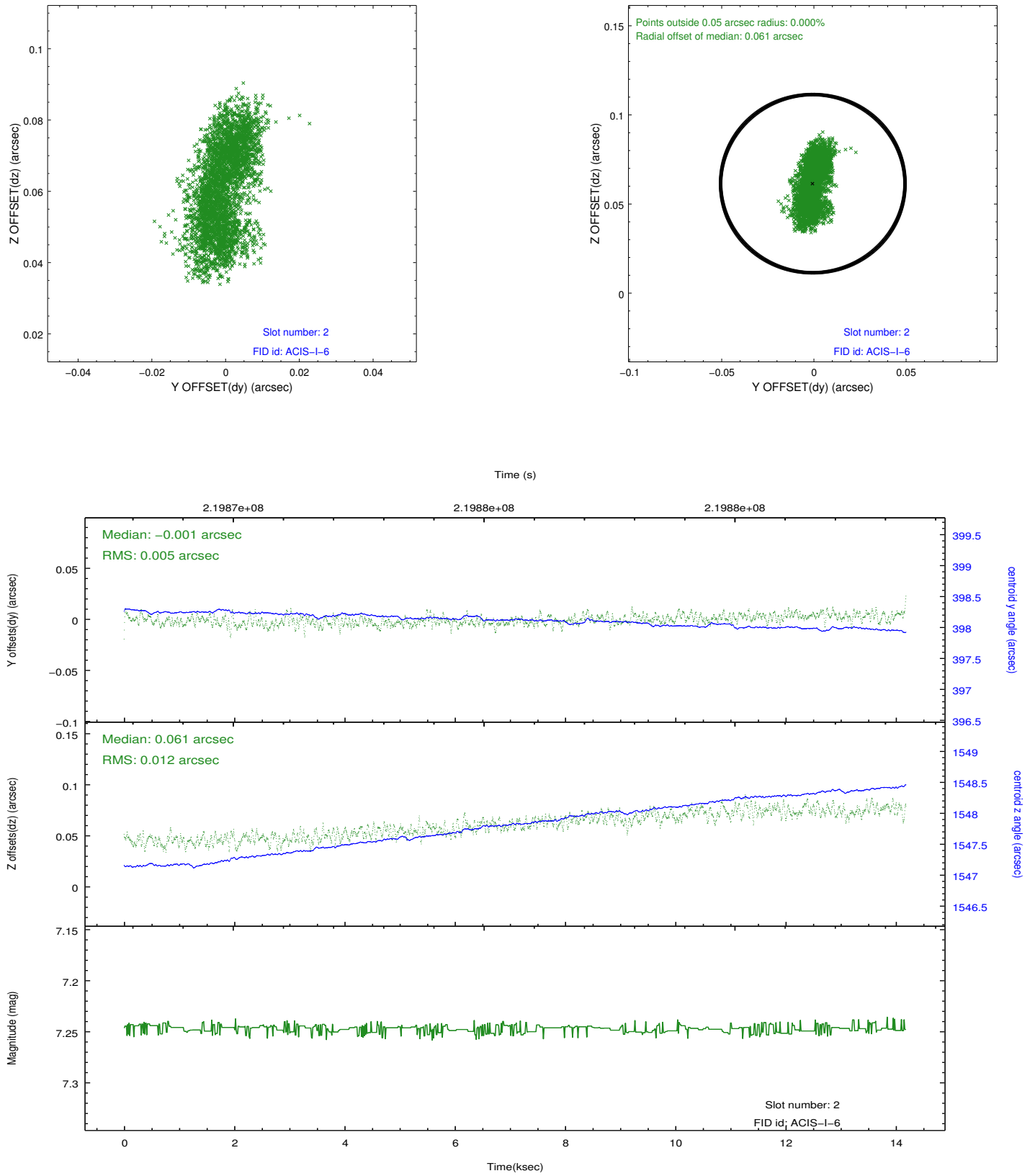
2.5.1 Slot 0



2.5.2 Slot 1



2.5.3 Slot 2



A Summary

A.1 Status

V&V Scientist	Jen Lauer
V&V Date (YYYY-MM-DD)	2013.01.04
V&V Edition	1
V&V Disposition and Status	OK
V&V Charge Time	14.13595

A.2 Comments