

V&V Reference Report

L2 ASCDS Version : 7.6.7.1

Observation 4928 - L2 Version 002
Chandra X-Ray Center

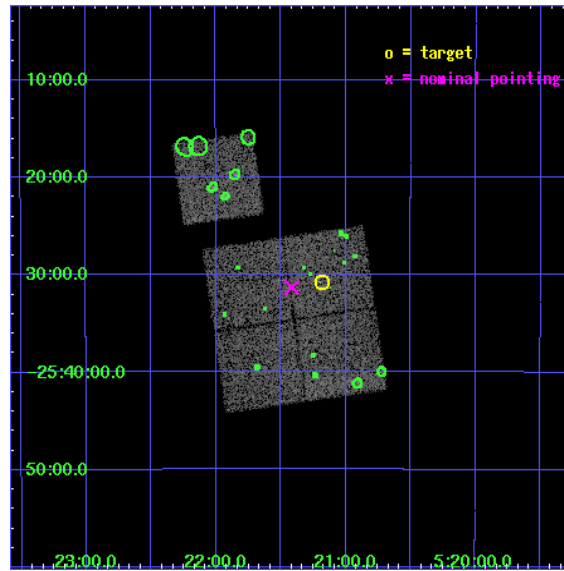
L2 Processing Date : Apr 7 2006

Contents

1	Front	2
2	OBI	3
2.1	OBI	3
2.1.1	Images	3
2.1.2	Bias	3
2.1.3	Parameters	4
2.1.4	Events	4
2.2	Compared Parameters	5
2.3	Aspect	6
2.4	Star Slots	9
2.4.1	Slot 3	9
2.4.2	Slot 4	10
2.4.3	Slot 5	11
2.4.4	Slot 6	12
2.4.5	Slot 7	13
2.5	FID Slots	14
2.5.1	Slot 0	14
2.5.2	Slot 1	15
2.5.3	Slot 2	16
3	Point Sources	17
A	Summary	18
A.1	Status	18
A.2	Comments	18

1 Front

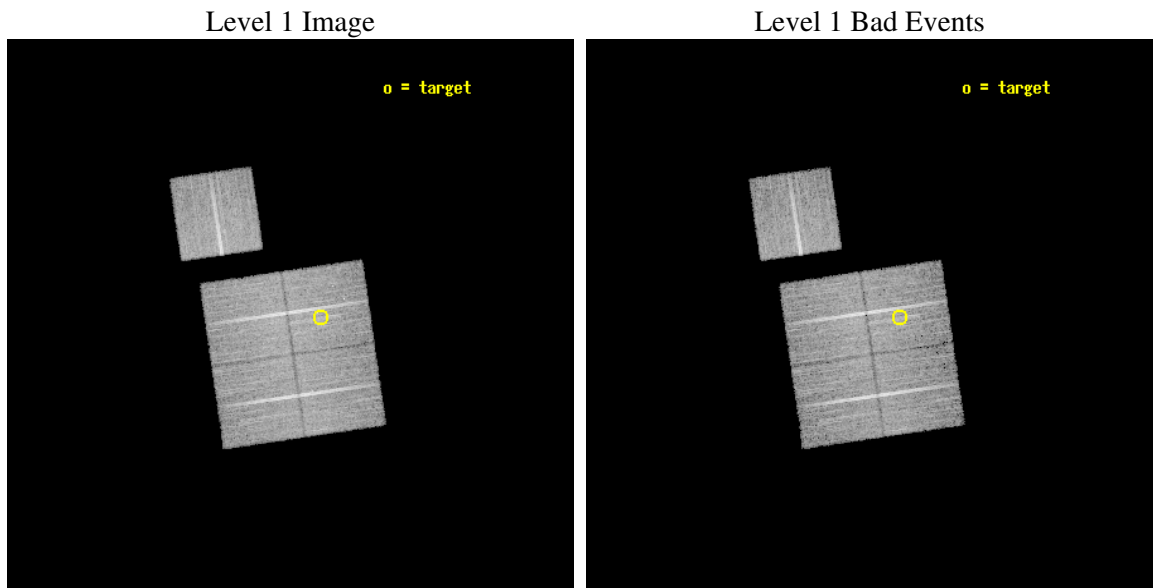
seq_num	800379
obs_id	4928
title	Chandra snapshot survey of 10 distant clusters of galaxies
observer	Dr. Stephen Murray
object	CL0521-2530
dtcycle	0
cycle	P
ra_targ	80.294583
dec_targ	-25.512222
ra_nom	80.353766312079
dec_nom	-25.52199359906
roll_nom	351.73417783162
revision	2
ontime	14135.958982587
livetime	13951.262271738
ontime0	14139.099972814
ontime1	14139.099972814
ontime2	14139.099972814
ontime3	14135.958982587
ontime6	14139.099972814
l2events	39347



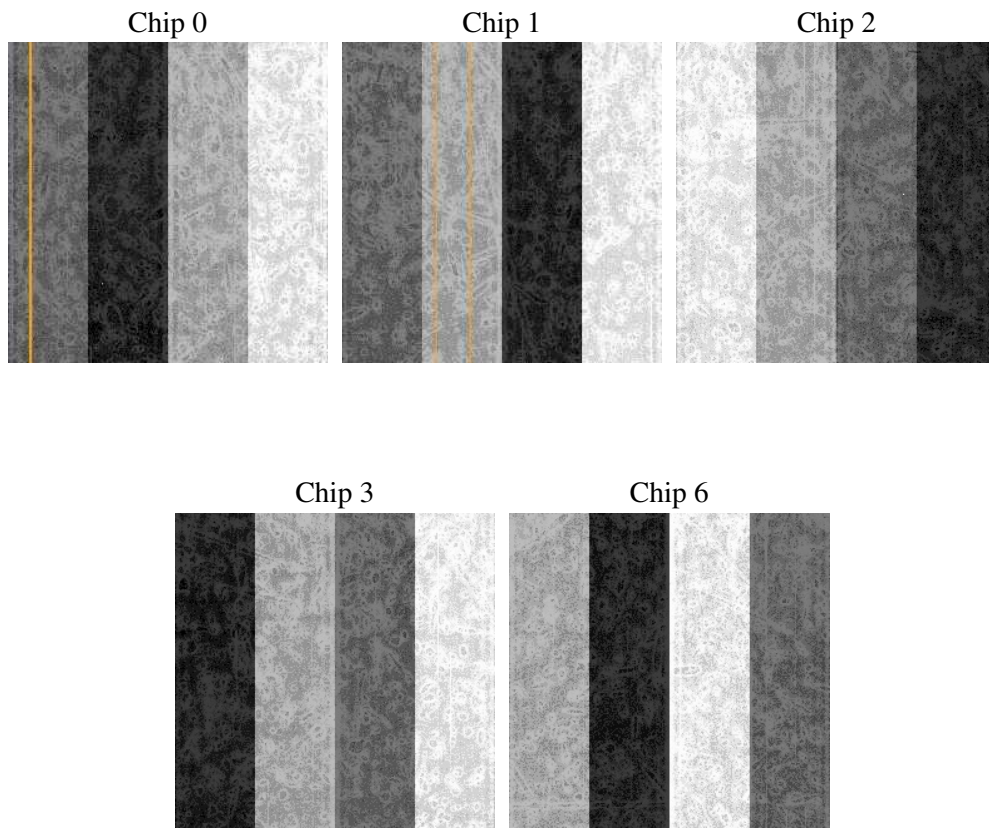
2 OBI

2.1 OBI

2.1.1 Images



2.1.2 Bias



2.1.3 Parameters

obi_num	1
ascdsver	7.6.7.1
caldbver	3.2.1
date	2006-04-07T07:55:03
revision	2

sched_exp_time	14000.000000
ontime	14140.817896962
ontime0	14143.95888719
ontime1	14143.95888719
ontime2	14143.958867252
ontime3	14140.817896962
ontime6	14143.95888719
l1events	458403

2.1.4 Events

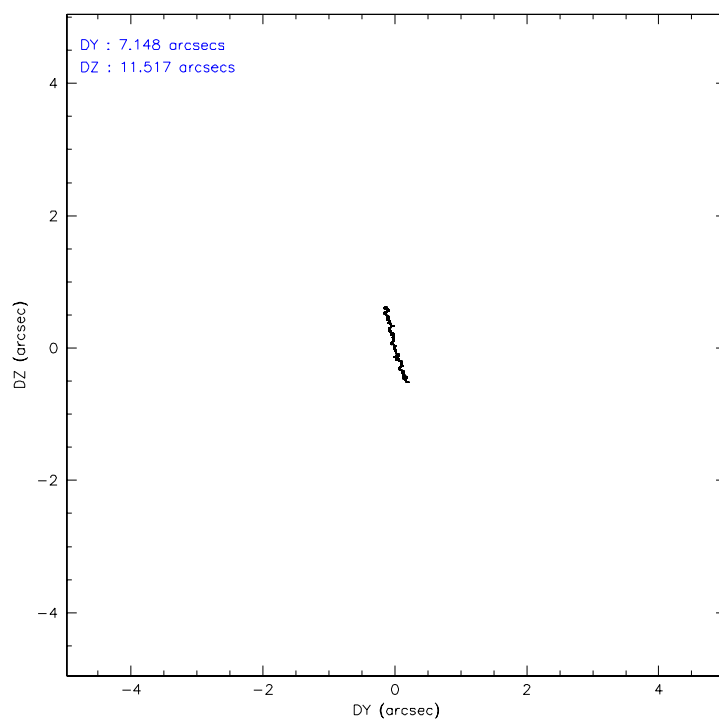
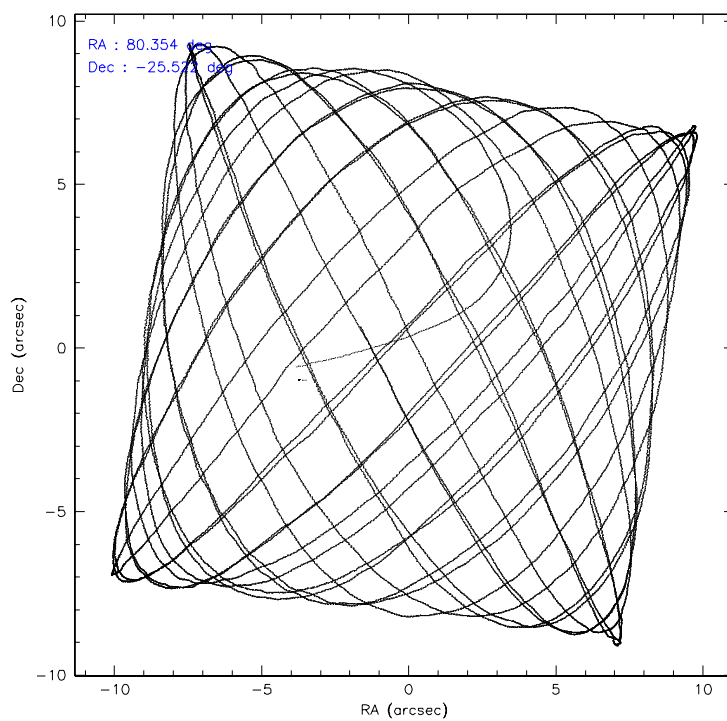
	ccd 0	ccd 1	ccd 2	ccd 3	ccd 6
level 1 events	88641	87156	95981	92434	94191
rejected events	79412	77025	86811	83232	84626
rejected %	89%	88%	90%	90%	89%

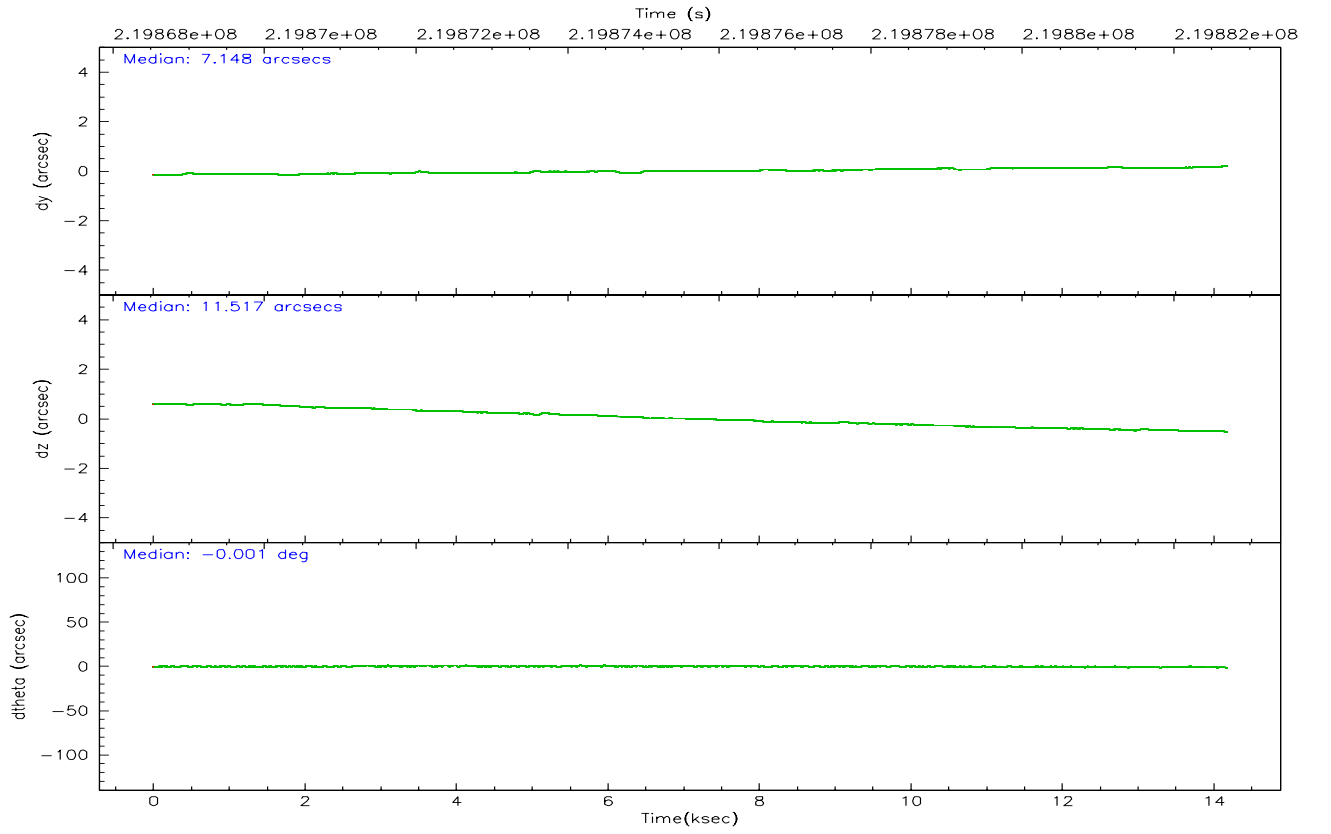
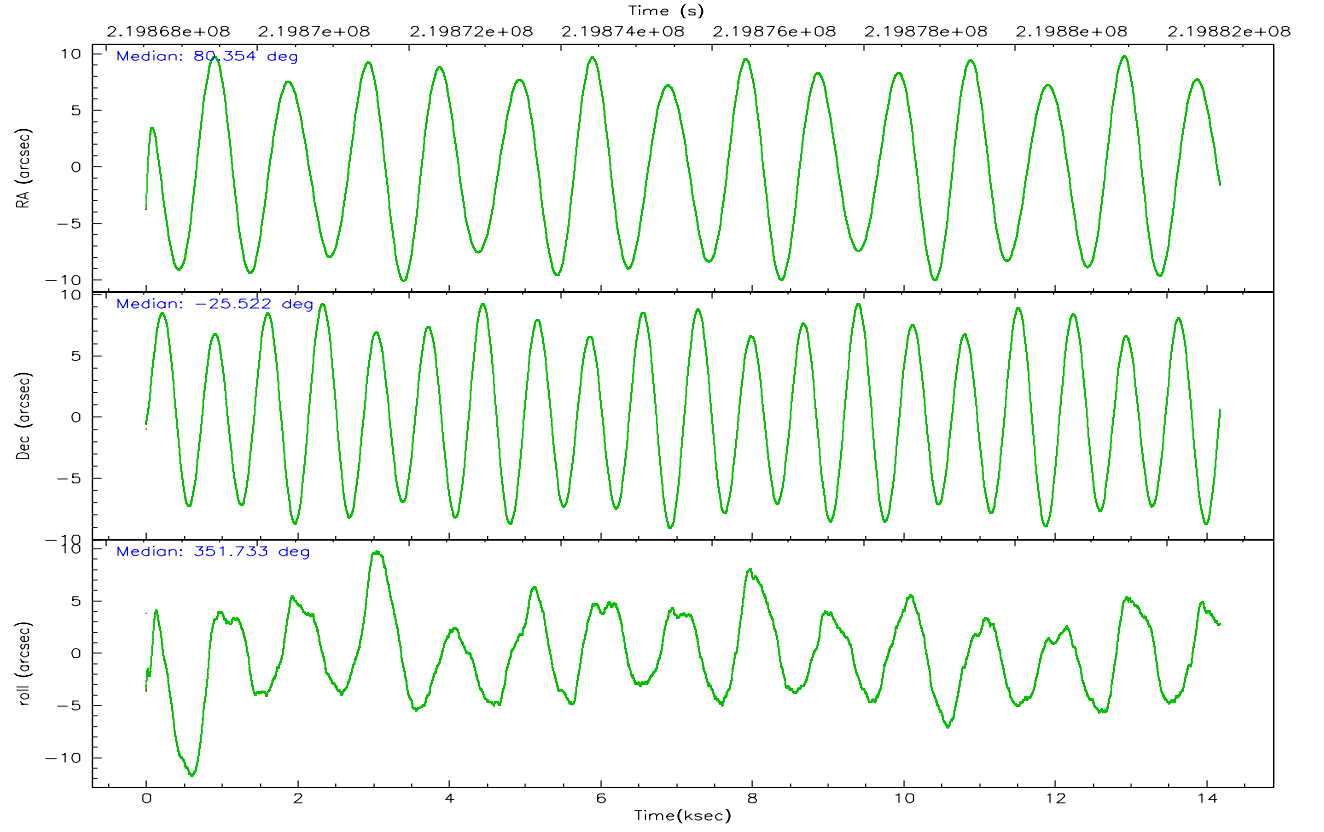
	ccd 0	ccd 1	ccd 2	ccd 3	ccd 6
grade 0 events	3174	3690	3307	3503	3423
	3%	4%	3%	3%	3%
grade 1 events	43	52	50	48	62
	0%	0%	0%	0%	0%
grade 2 events	2198	2125	2128	1878	2031
	2%	2%	2%	2%	2%
grade 3 events	1125	1134	1045	1014	1070
	1%	1%	1%	1%	1%
grade 4 events	995	1076	1043	1043	1072
	1%	1%	1%	1%	1%
grade 5 events	3131	3506	3010	3612	3681
	3%	4%	3%	3%	3%
grade 6 events	1740	2110	1650	1766	1972
	1%	2%	1%	1%	2%
grade 7 events	76235	73463	83748	79570	80880
	86%	84%	87%	86%	85%

2.2 Compared Parameters

Parameter	Planned	Actual	Parameter	Planned	Actual
Instrument	ACIS	ACIS	Obspar format version number	6	6
Detector	ACIS-01236	ACIS-01236	Obspar file type	PREDICTED	ACTUAL
Grating	NONE	NONE	Obspar update status	NONE	UPDATED
Data mode	VFAINT	VFAINT	On-chip summing requested	N	N
Observation mode	POINTING	POINTING	Subarray requested	NONE	NONE
Pointing RA	80.325628	80.3537663120794	Alternating exposures requested	N	N
Pointing Dec	-25.532245	-25.52199359905976	Primary exposure time	0.000000	3.1
Pointing Roll	351.513361	351.7341778316191			
SIM focus pos (mm)	-0.782348	-0.7809083437167272			
SIM defocus (mm)	0	0.001439871863259334			
SIM translation stage pos (mm)	-225.840463	-225.8433433320239			
SIM translation stage offset (mm)	-7.752	-7.749109670905796			
Observation start time	219868704.184000	219867731.38938			
Observation start date	2004-12-19T18:37:20	2004-12-19T18:22:11			
Observation end time	219882704.184000	219883456.94009			
Observation end date	2004-12-19T22:30:40	2004-12-19T22:44:16			
Read mode	TIMED	TIMED			

2.3 Aspect



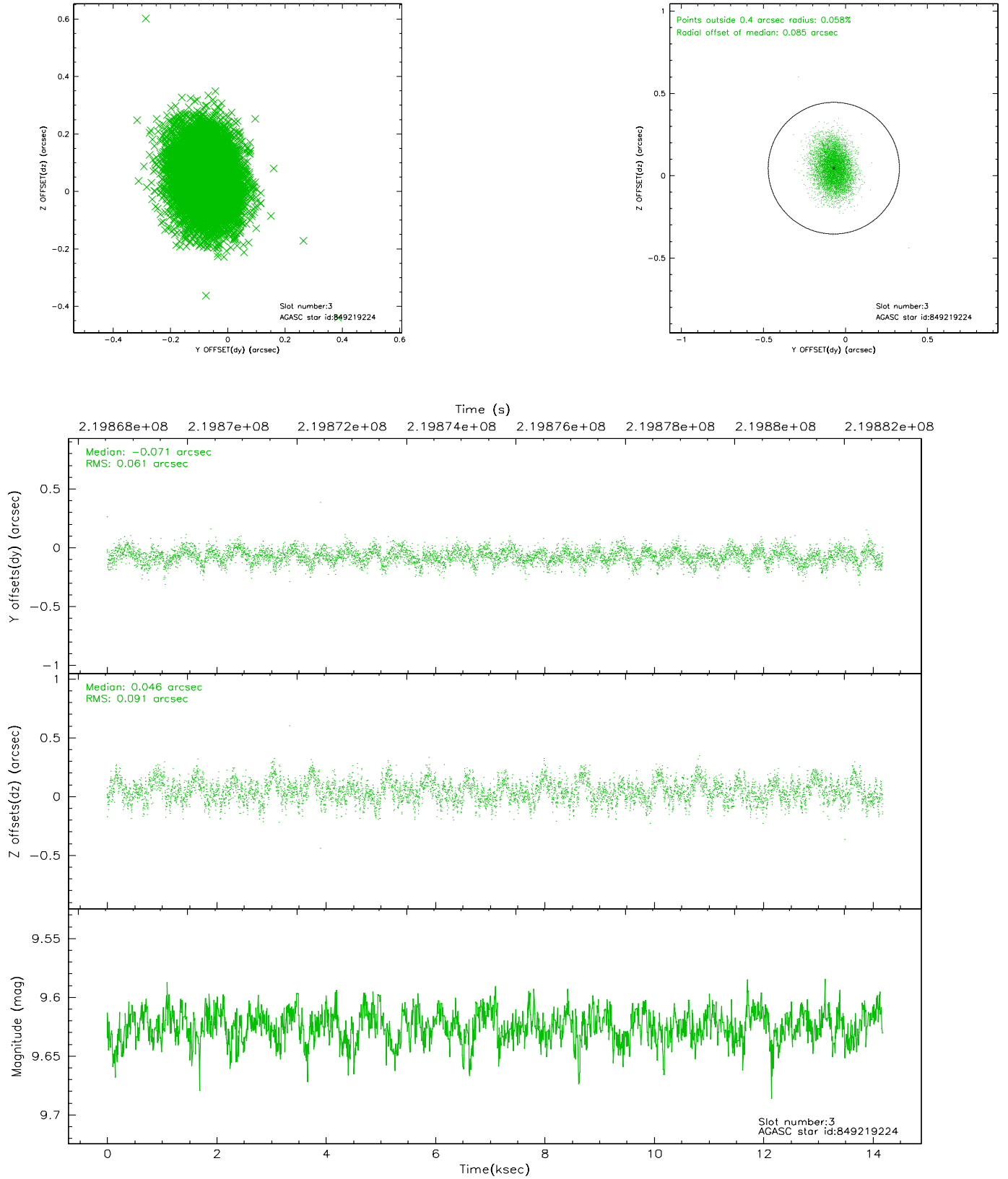


Slot Statistics

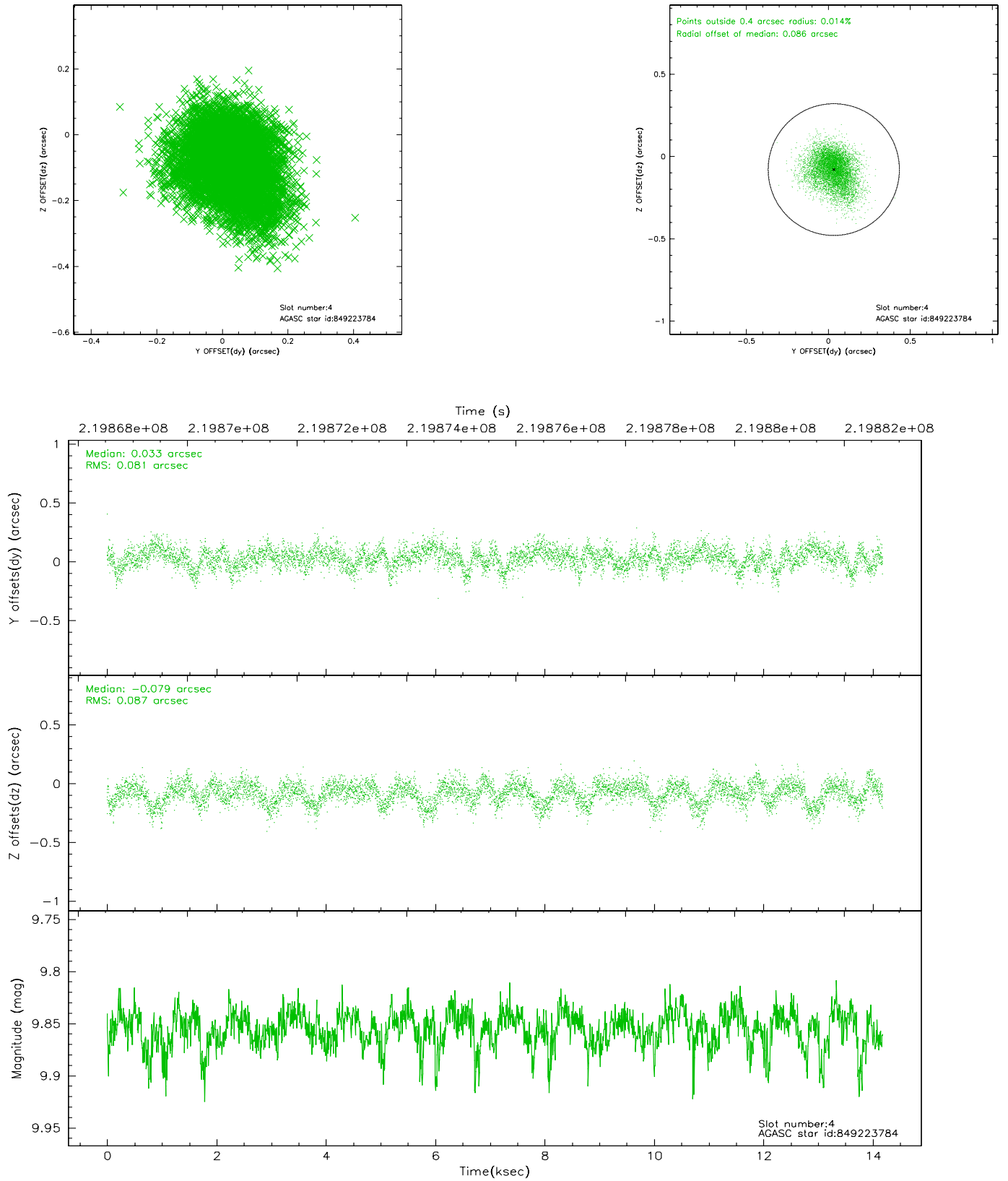
slot	status	id	mag	n_pts	med_dy	med_dz	dr1	dr2	ra	dec	mean_y	mean_z
0	FID	ACIS-I-1	7.23	3460	0.101	-0.079	0.012	0.020	0.000000	0.000000	932.46	-994.23
1	FID	ACIS-I-5	7.22	3460	-0.181	0.107	0.008	0.011	0.000000	0.000000	-1815.71	903.28
2	FID	ACIS-I-6	7.25	3460	-0.011	0.042	0.015	0.023	0.000000	0.000000	397.58	1548.06
3	GUIDE	849219224	9.62	6910	-0.071	0.046	0.116	0.190	79.917999	-26.007007	-1051.64	-1886.92
4	GUIDE	849223784	9.85	6915	0.033	-0.079	0.126	0.207	80.444618	-25.367658	295.58	642.77
5	GUIDE	849226272	8.40	6844	0.029	0.121	0.063	0.099	80.214822	-25.538553	-352.27	-75.28
6	BAD	849226688	5.45	3461	0.144	-0.238	0.067	0.099	79.879916	-25.124188	-1653.29	1235.90
7	GUIDE	849221808	9.98	6911	-0.055	0.037	0.125	0.202	81.008696	-25.199789	2024.88	1506.94

2.4 Star Slots

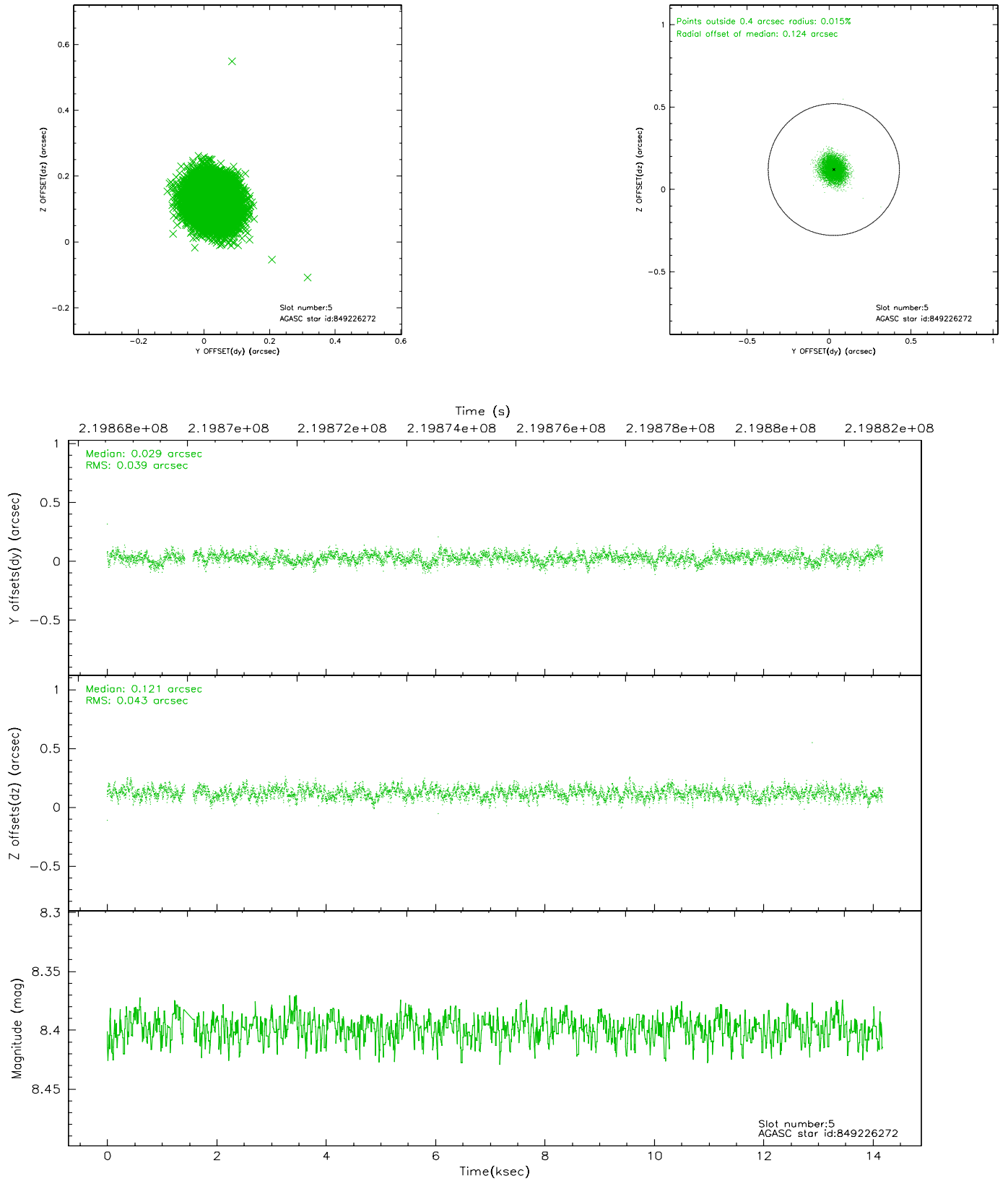
2.4.1 Slot 3



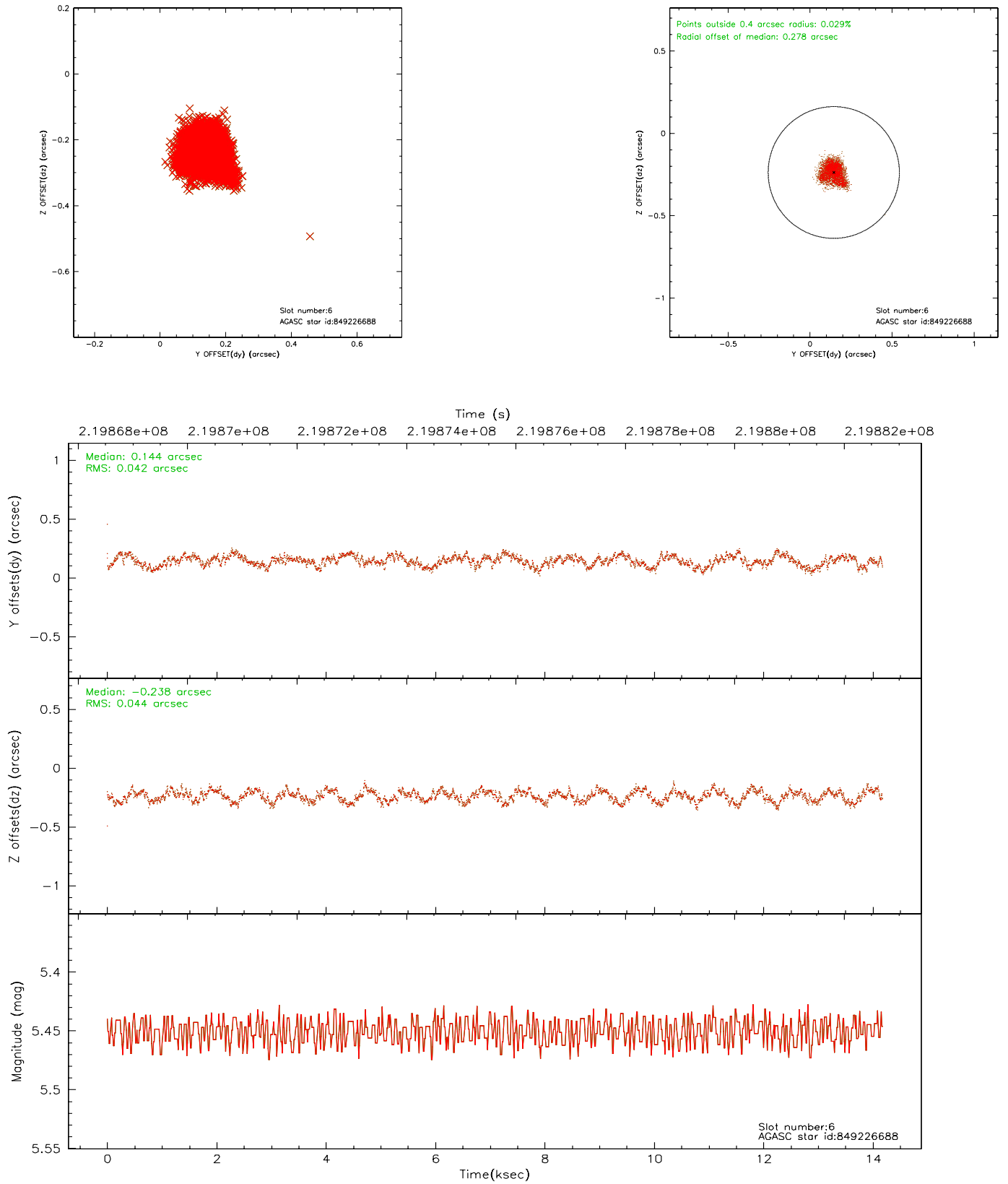
2.4.2 Slot 4



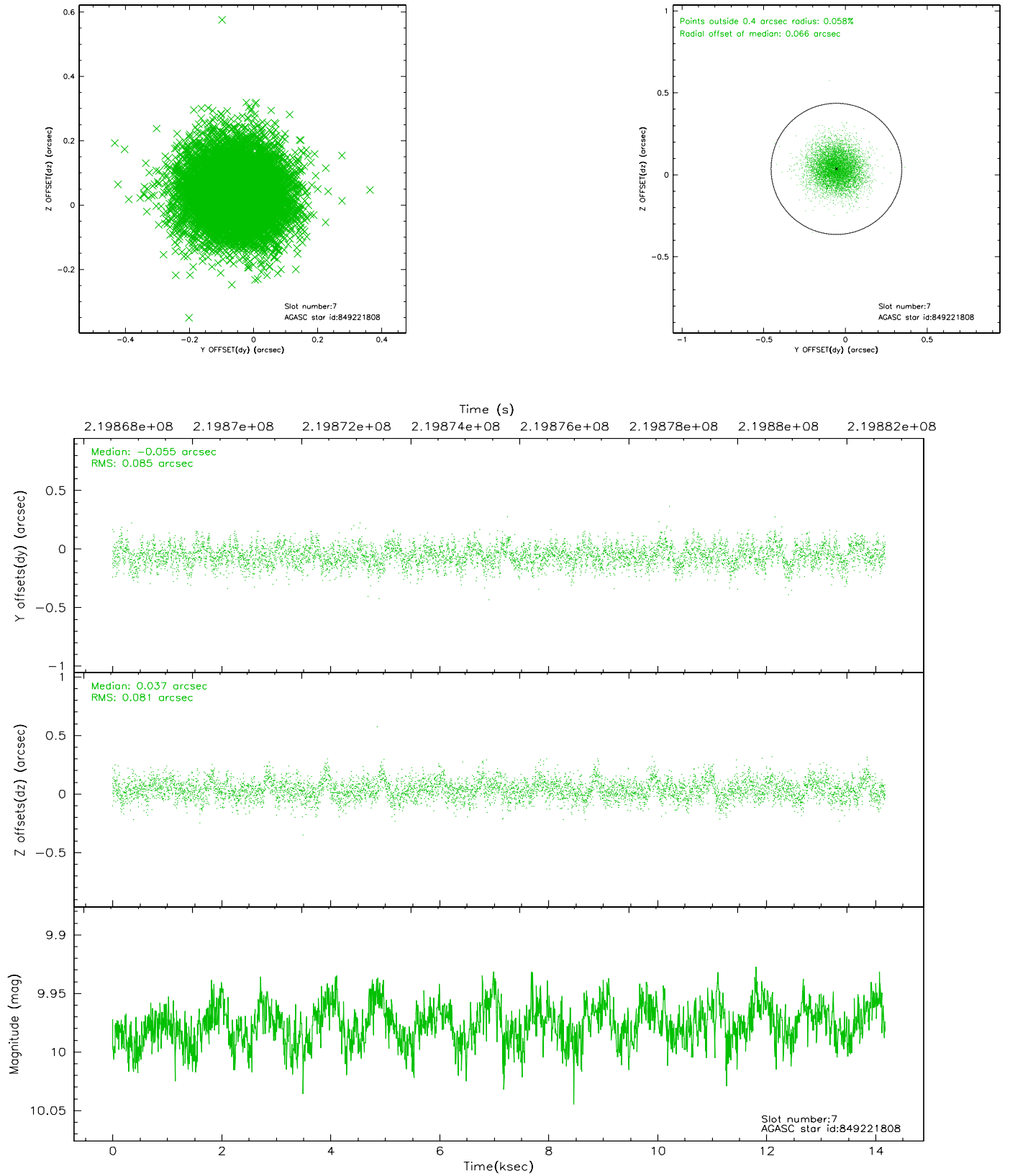
2.4.3 Slot 5



2.4.4 Slot 6

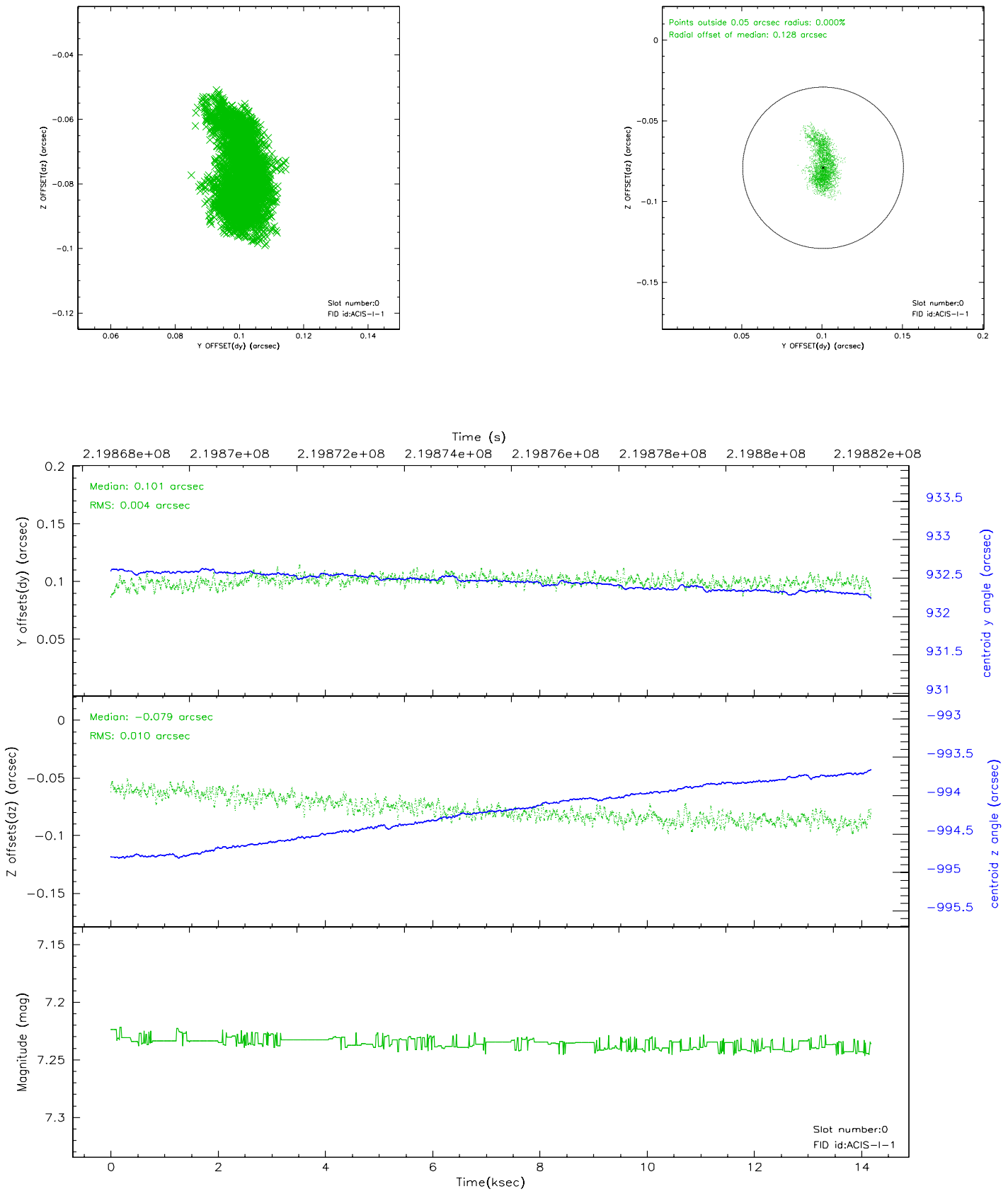


2.4.5 Slot 7

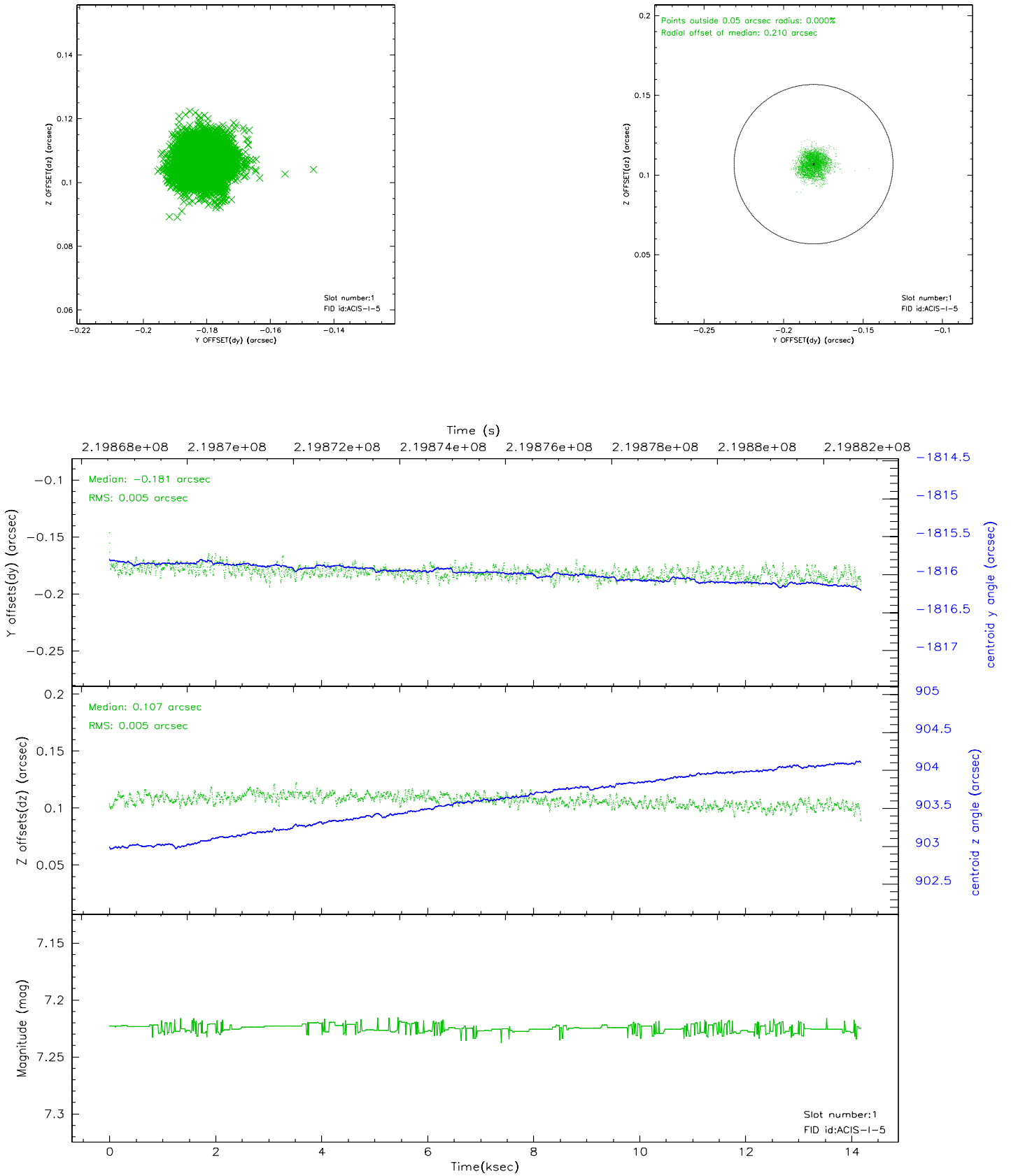


2.5 FID Slots

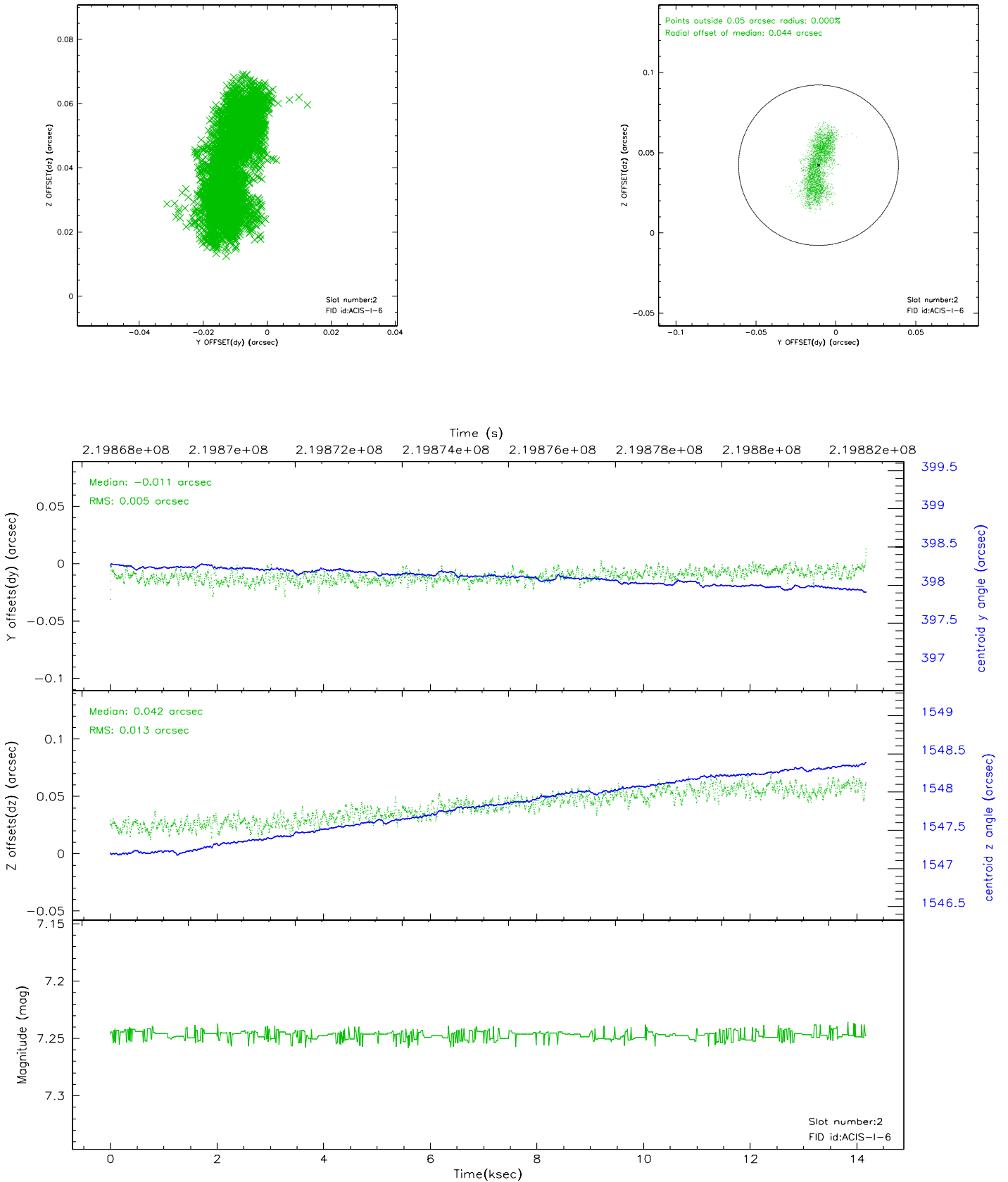
2.5.1 Slot 0



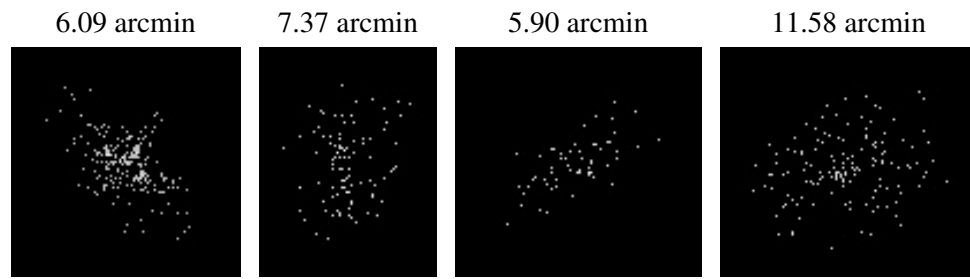
2.5.2 Slot 1



2.5.3 Slot 2



3 Point Sources



A Summary

A.1 Status

V&V Scientist	Beth Sundheim
V&V Date (YYYY-MM-DD)	2006.04.07
V&V Edition	1
V&V Disposition and Status	OK
V&V Charge Time	14.13595

A.2 Comments

Slot 6 was not included in aspect solution.