

V&V Reference Report

L2 ASCDS Version : 7.6.7.2

Observation 4903 - L2 Version 001
Chandra X-Ray Center

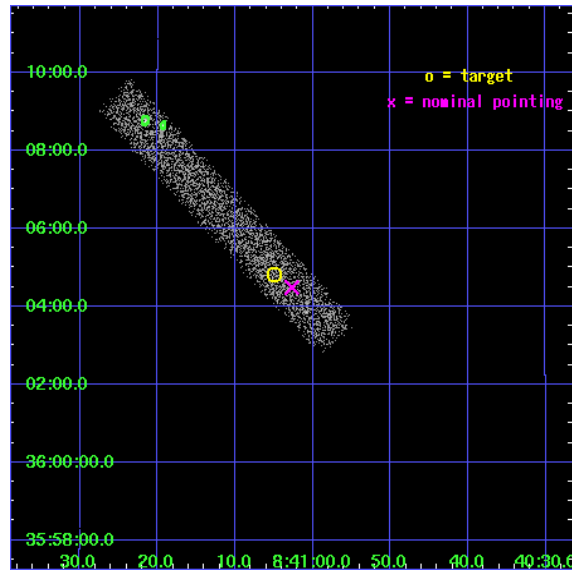
L2 Processing Date : Jun 2 2006

Contents

1	Front	2
2	OBI	3
2.1	OBI	3
2.1.1	Images	3
2.1.2	Bias	3
2.1.3	Parameters	4
2.1.4	Events	4
2.2	Compared Parameters	5
2.3	Aspect	6
2.4	Star Slots	9
2.4.1	Slot 3	9
2.4.2	Slot 4	10
2.4.3	Slot 5	11
2.4.4	Slot 6	12
2.4.5	Slot 7	13
2.5	FID Slots	14
2.5.1	Slot 0	14
2.5.2	Slot 1	15
2.5.3	Slot 2	16
3	Point Sources	17
A	Summary	18
A.1	Status	18
A.2	Comments	18

1 Front

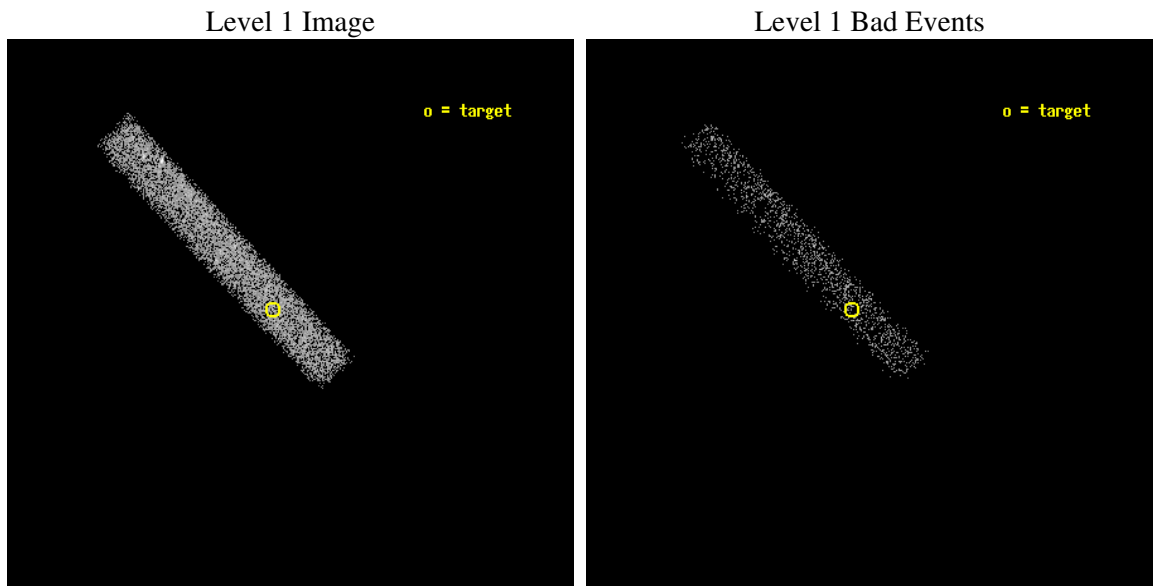
seq_num	700984
obs_id	4903
title	The X-ray Spectra of Red Quasars
observer	Dr Mark Lacy
object	FTM 0841+3604
dtcycle	0
cycle	P
ra_targ	130.270833
dec_targ	36.080583
ra_nom	130.26128392032
dec_nom	36.07479308203
roll_nom	226.95460445699
revision	2
ontime	10274.000153095
livetime	9317.9758326633
ontime7	10274.000153095
l2events	5230



2 OBI

2.1 OBI

2.1.1 Images



2.1.2 Bias

Chip 7



2.1.3 Parameters

obi_num	1
ascdsver	7.6.7.2
caldbver	3.2.2
date	2006-06-02T17:08:36
revision	2

sched_exp_time	10000.000000
ontime	10860.063515276
ontime7	10860.063515276
l1events	13502

2.1.4 Events

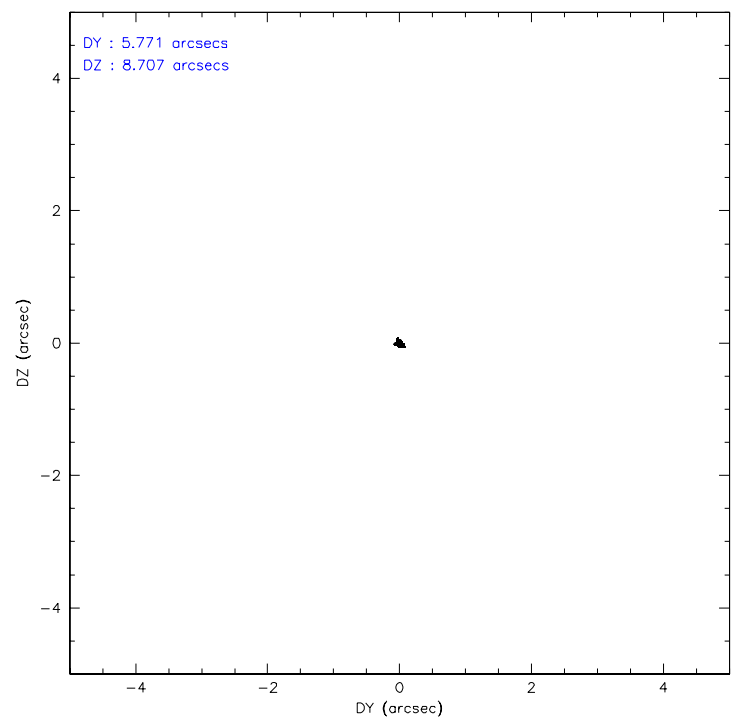
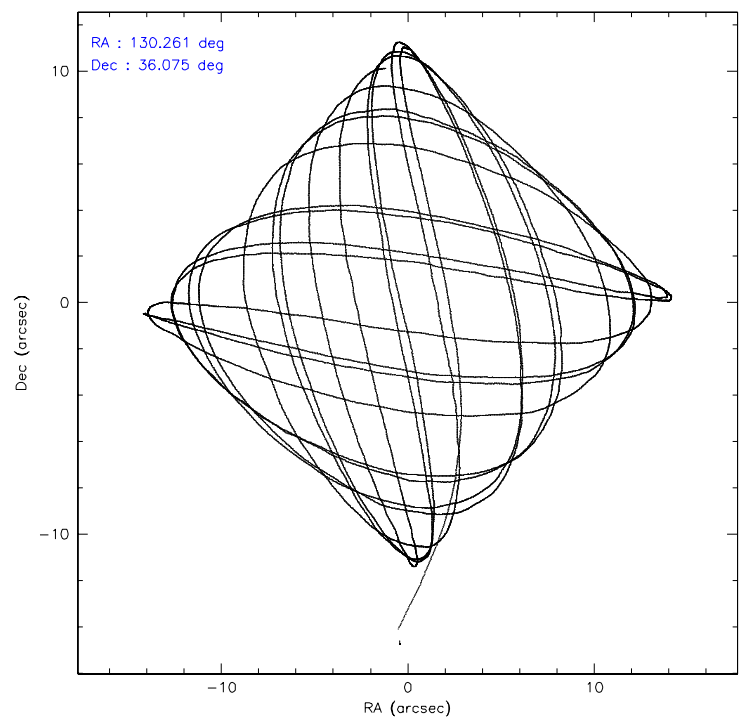
	ccd 7
level 1 events	13502
rejected events	8045
rejected %	59%

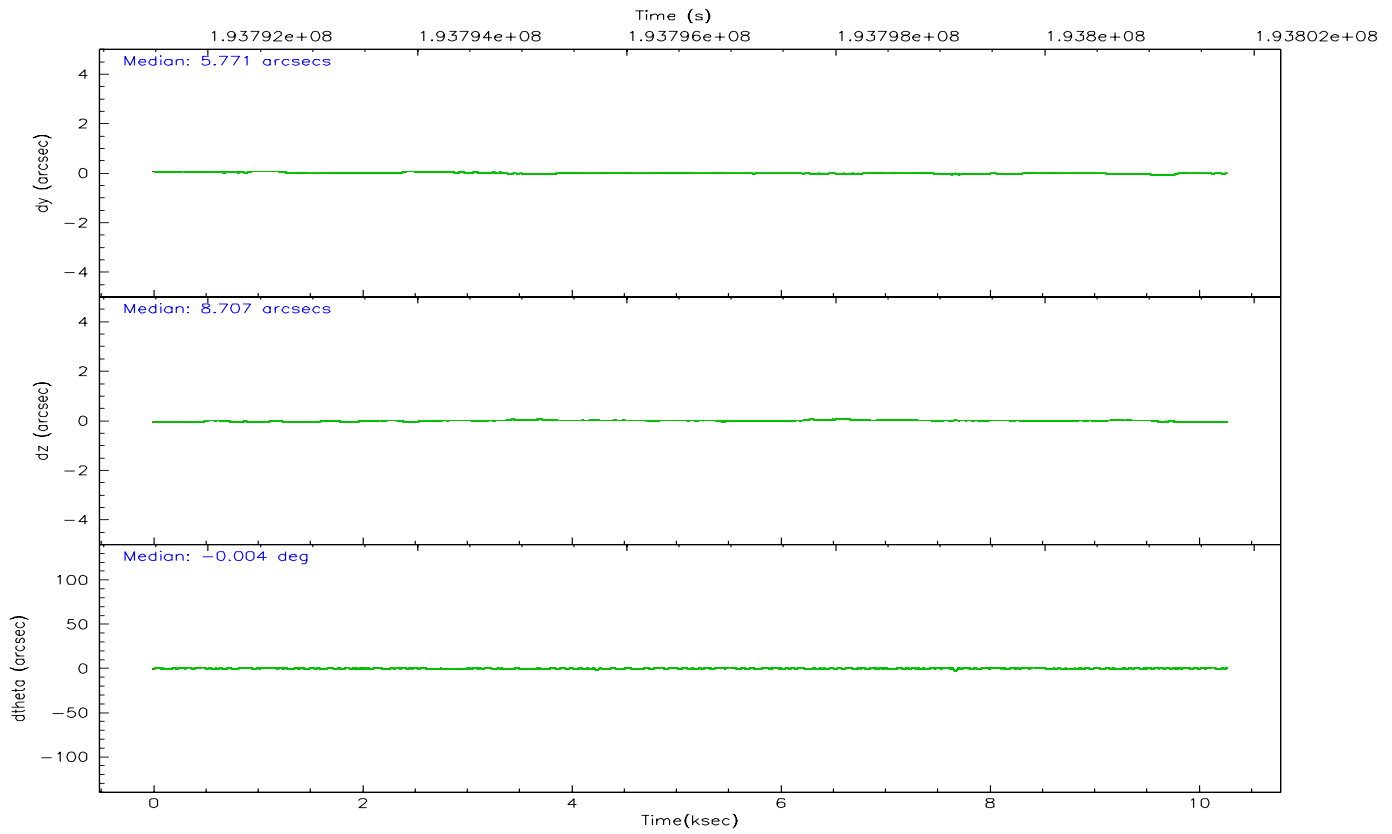
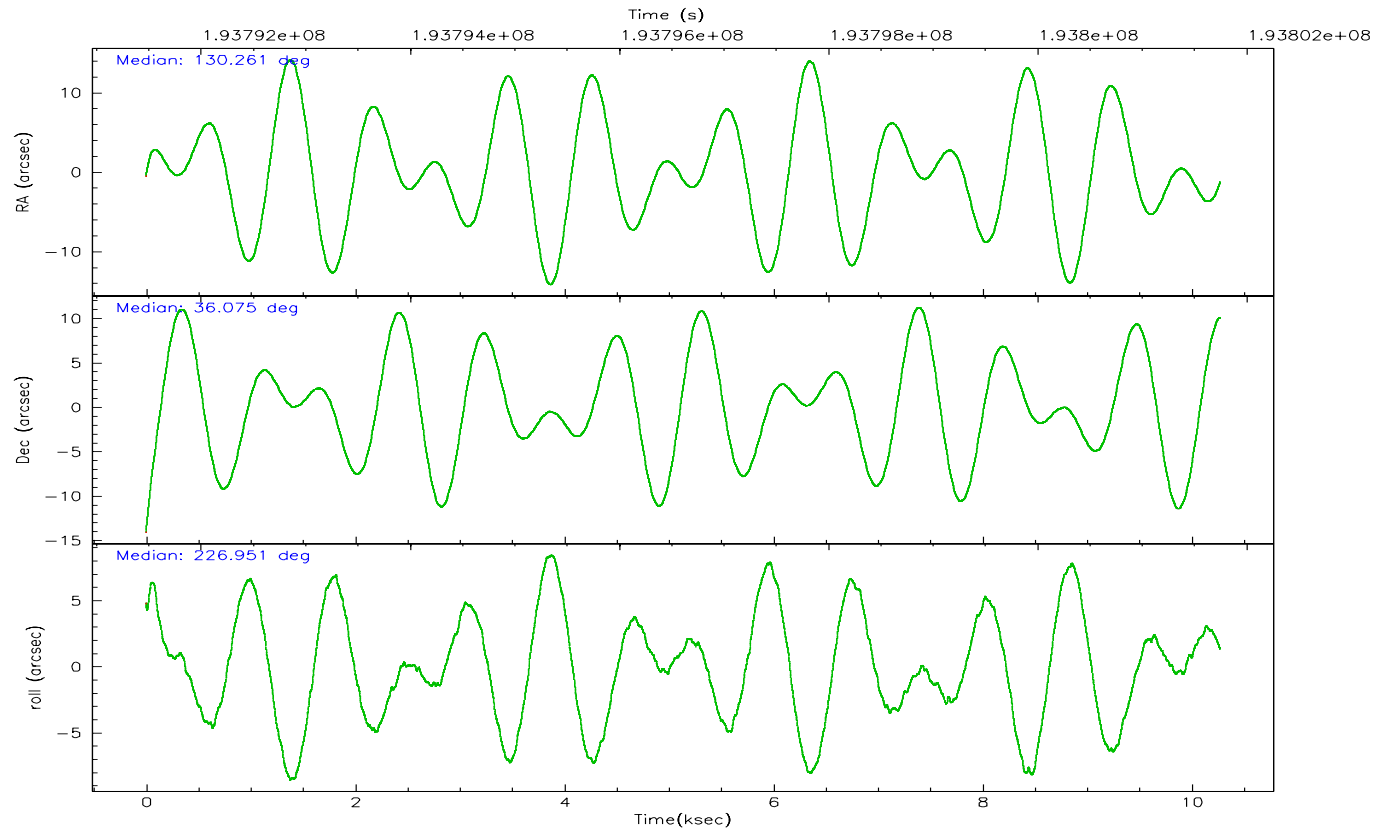
	ccd 7
grade 0 events	479
	3%
grade 1 events	10
	0%
grade 2 events	1368
	10%
grade 3 events	657
	4%
grade 4 events	591
	4%
grade 5 events	942
	6%
grade 6 events	2904
	21%
grade 7 events	6551
	48%

2.2 Compared Parameters

Parameter	Planned	Actual	Parameter	Planned	Actual
Instrument	ACIS	ACIS	Obspar format version number	6	6
Detector	ACIS-7	ACIS-7	Obspar file type	PREDICTED	ACTUAL
Grating	NONE	NONE	Obspar update status	NONE	UPDATED
Data mode	FAINT	FAINT	On-chip summing requested	N	N
Observation mode	POINTING	POINTING	Subarray requested	1/8	1/8
Pointing RA	130.268428	130.2612839203185	Subarray start row	0	449
Pointing Dec	36.101389	36.07479308202984	Subarray row count	1024	128
Pointing Roll	226.793771	226.9546044569889	Alternating exposures requested	N	N
SIM focus pos (mm)	-0.684267	-0.6828225247311905	Primary exposure time	0.000000	0.4
SIM defocus (mm)	0	0.001444936568705701			
SIM translation stage pos (mm)	-190.132523	-190.1400660498719			
SIM translation stage offset (mm)	0	0.00754346686406393			
Observation start time	193791741.184000	193790737.00637			
Observation start date	2004-02-21T23:01:17	2004-02-21T22:45:37			
Observation end time	193801741.184000	193802821.75689			
Observation end date	2004-02-22T01:47:57	2004-02-22T02:07:01			
Read mode	TIMED	TIMED			

2.3 Aspect



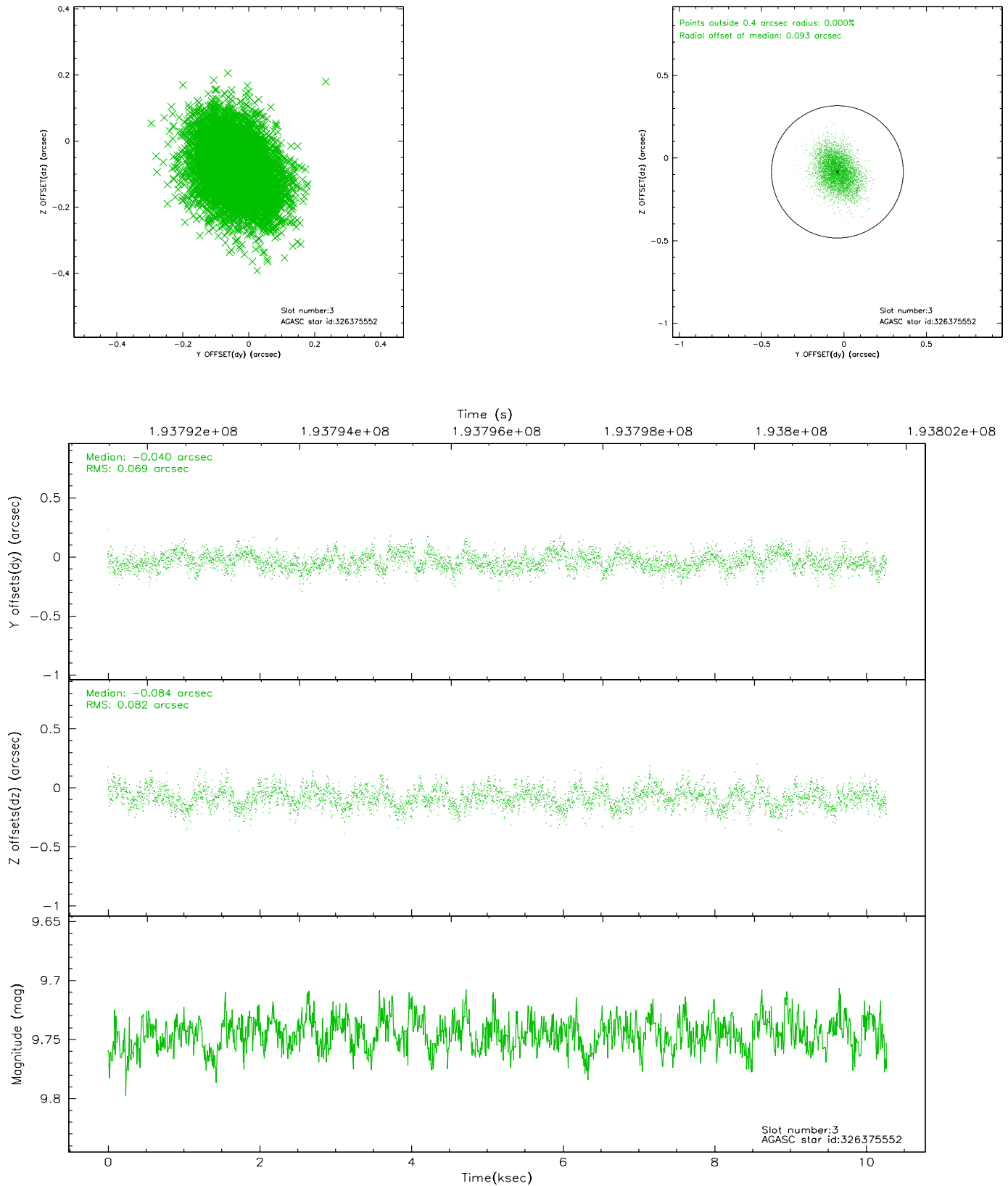


Slot Statistics

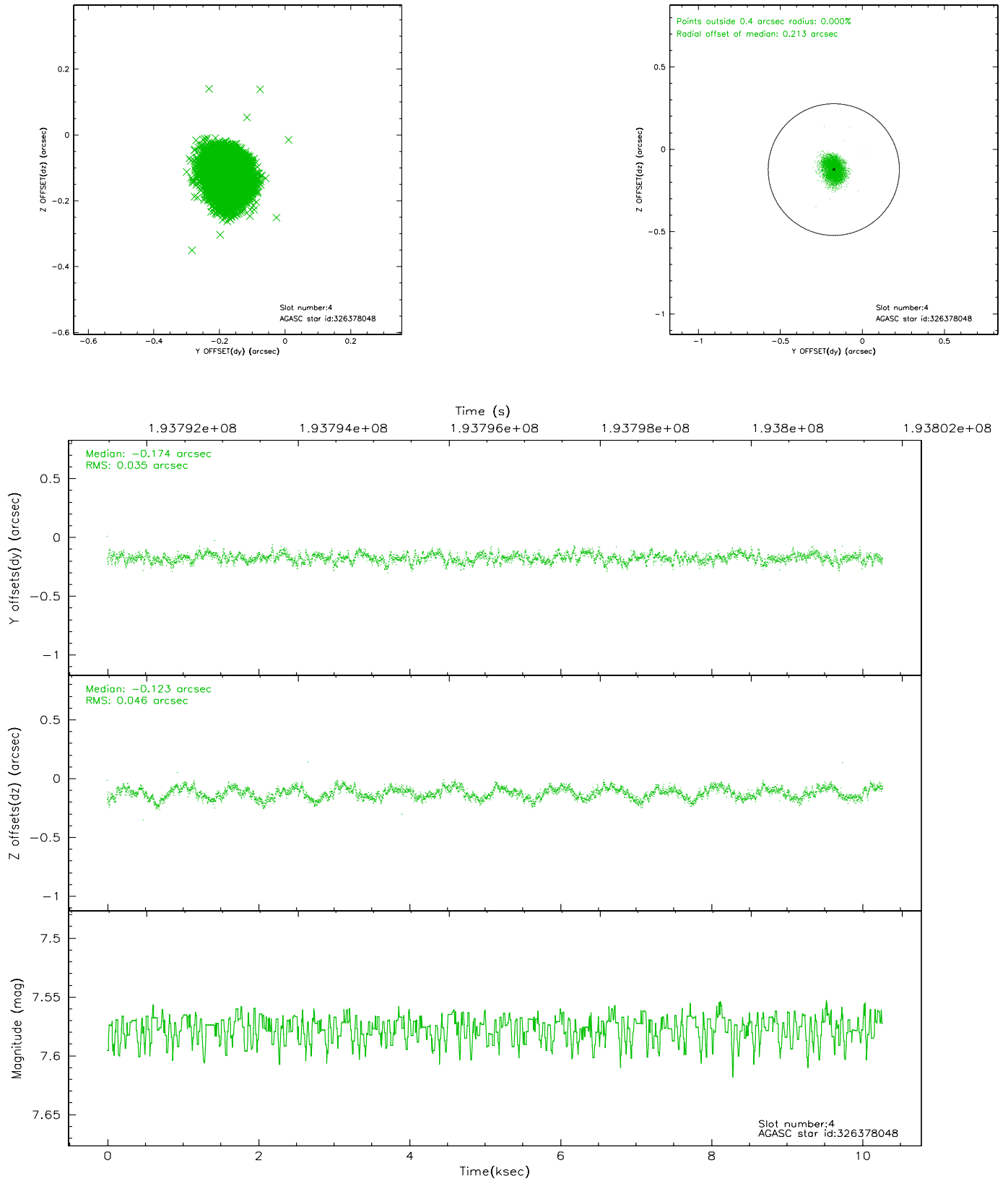
slot	status	id	mag	n_pts	med_dy	med_dz	dr1	dr2	ra	dec	mean_y	mean_z
0	FID	ACIS-S-2	7.10	2507	-0.032	-0.018	0.007	0.011	0.000000	0.000000	-758.53	-1729.93
1	FID	ACIS-S-4	7.21	2507	0.036	0.020	0.005	0.009	0.000000	0.000000	2154.59	178.04
2	FID	ACIS-S-5	7.23	2506	-0.035	0.007	0.006	0.011	0.000000	0.000000	-1810.71	172.31
3	GUIDE	326375552	9.75	5009	-0.040	-0.084	0.114	0.185	129.714524	36.329110	499.26	-1735.11
4	GUIDE	326378048	7.58	5013	-0.174	-0.123	0.063	0.094	130.883616	36.348232	-1872.95	687.61
5	GUIDE	326378568	8.27	5008	0.099	0.104	0.066	0.106	130.277846	36.185317	-238.99	-186.42
6	GUIDE	326381952	8.83	5012	0.111	0.129	0.133	0.197	130.575418	36.508326	-1676.51	-355.99
7	GUIDE	326385480	7.83	5012	0.008	-0.020	0.092	0.130	129.863859	35.519781	2335.82	568.08

2.4 Star Slots

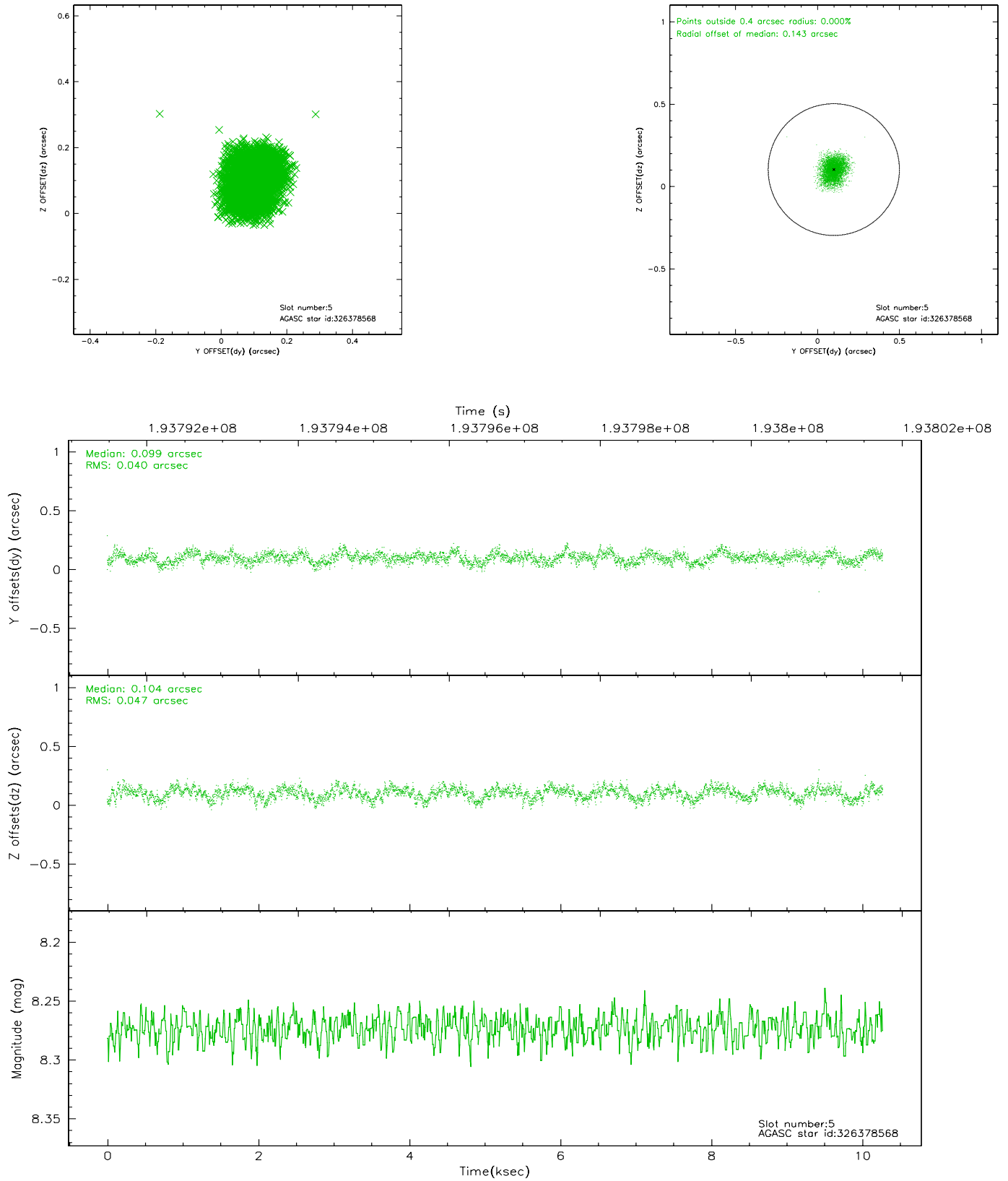
2.4.1 Slot 3



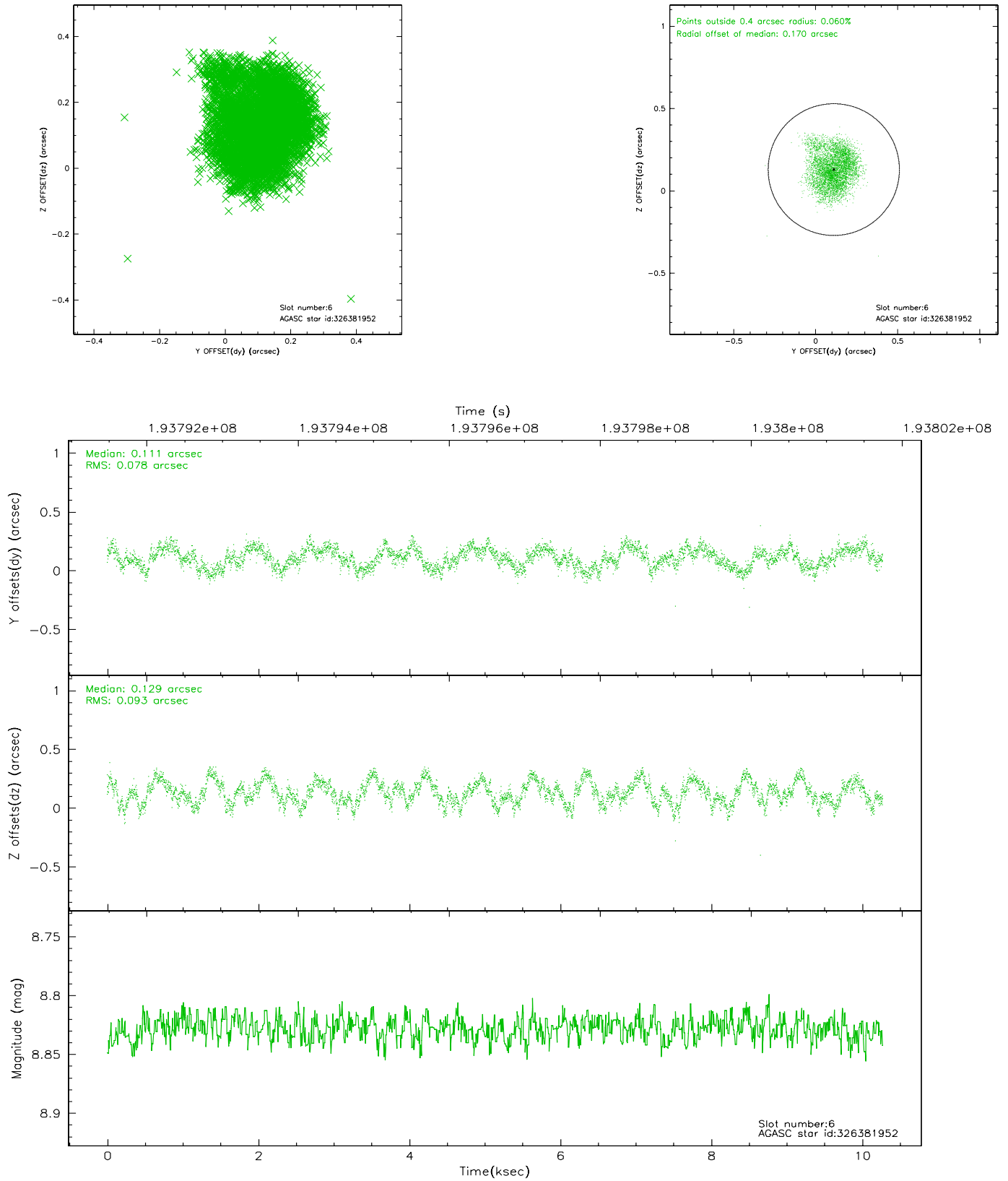
2.4.2 Slot 4



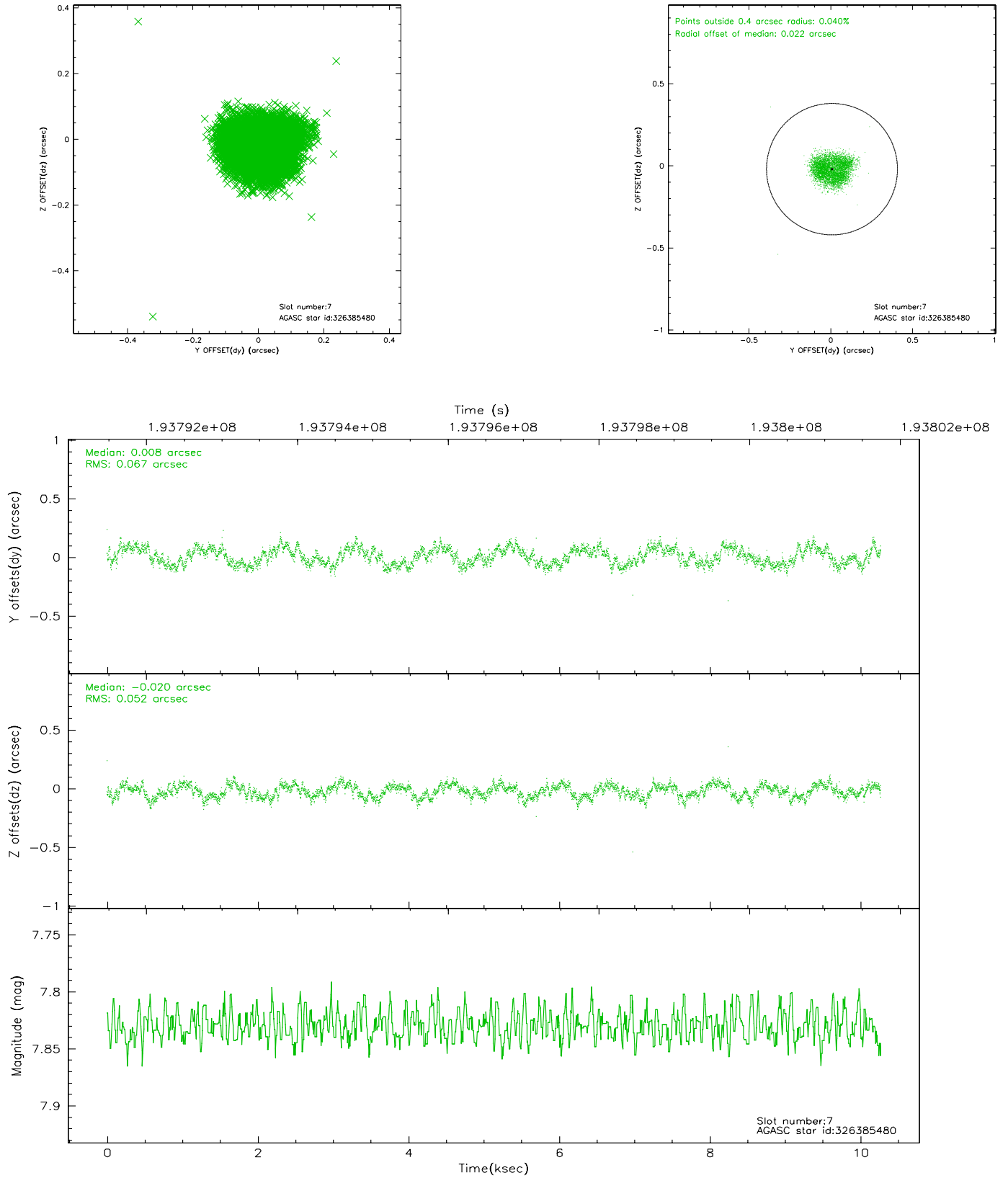
2.4.3 Slot 5



2.4.4 Slot 6

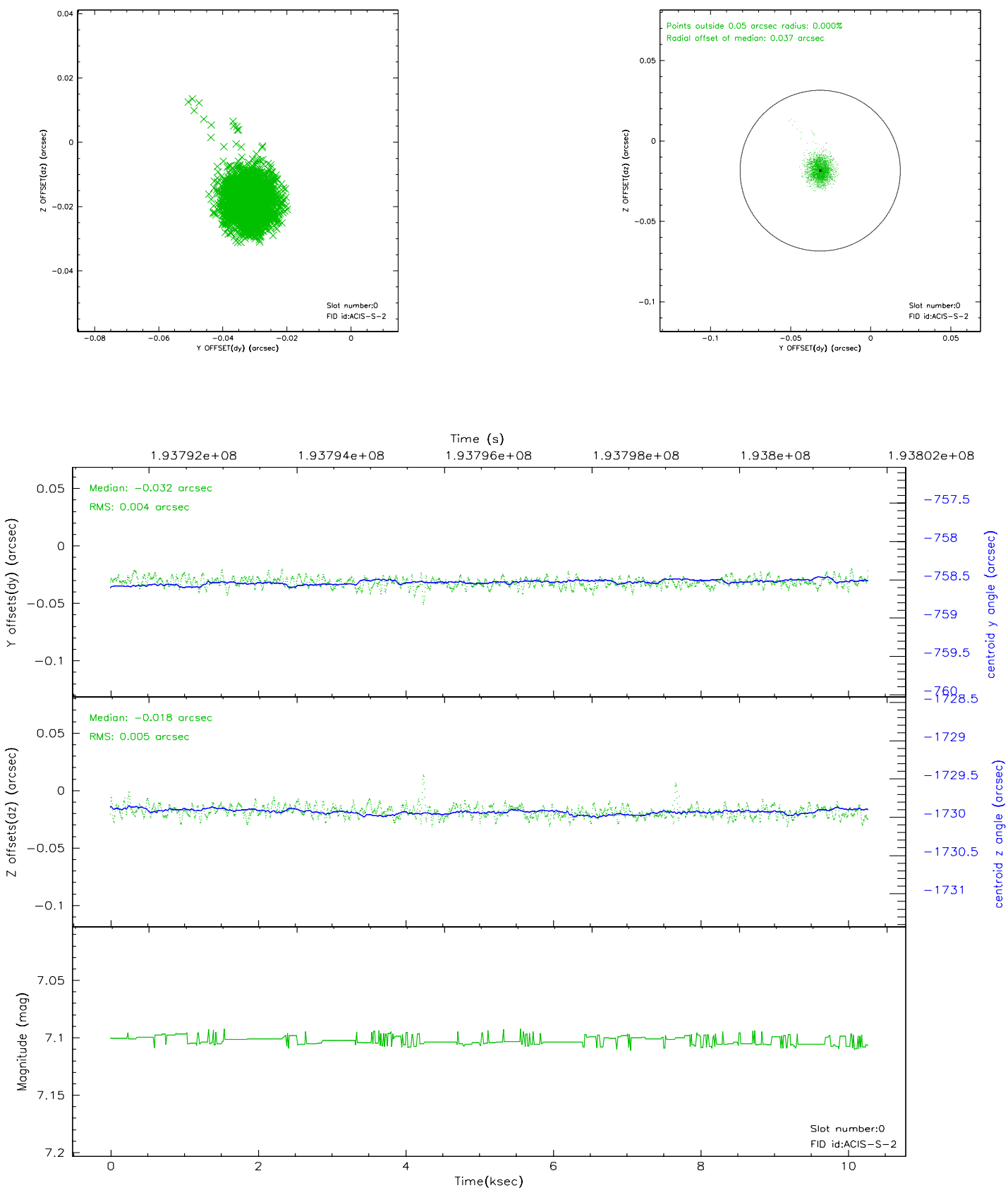


2.4.5 Slot 7

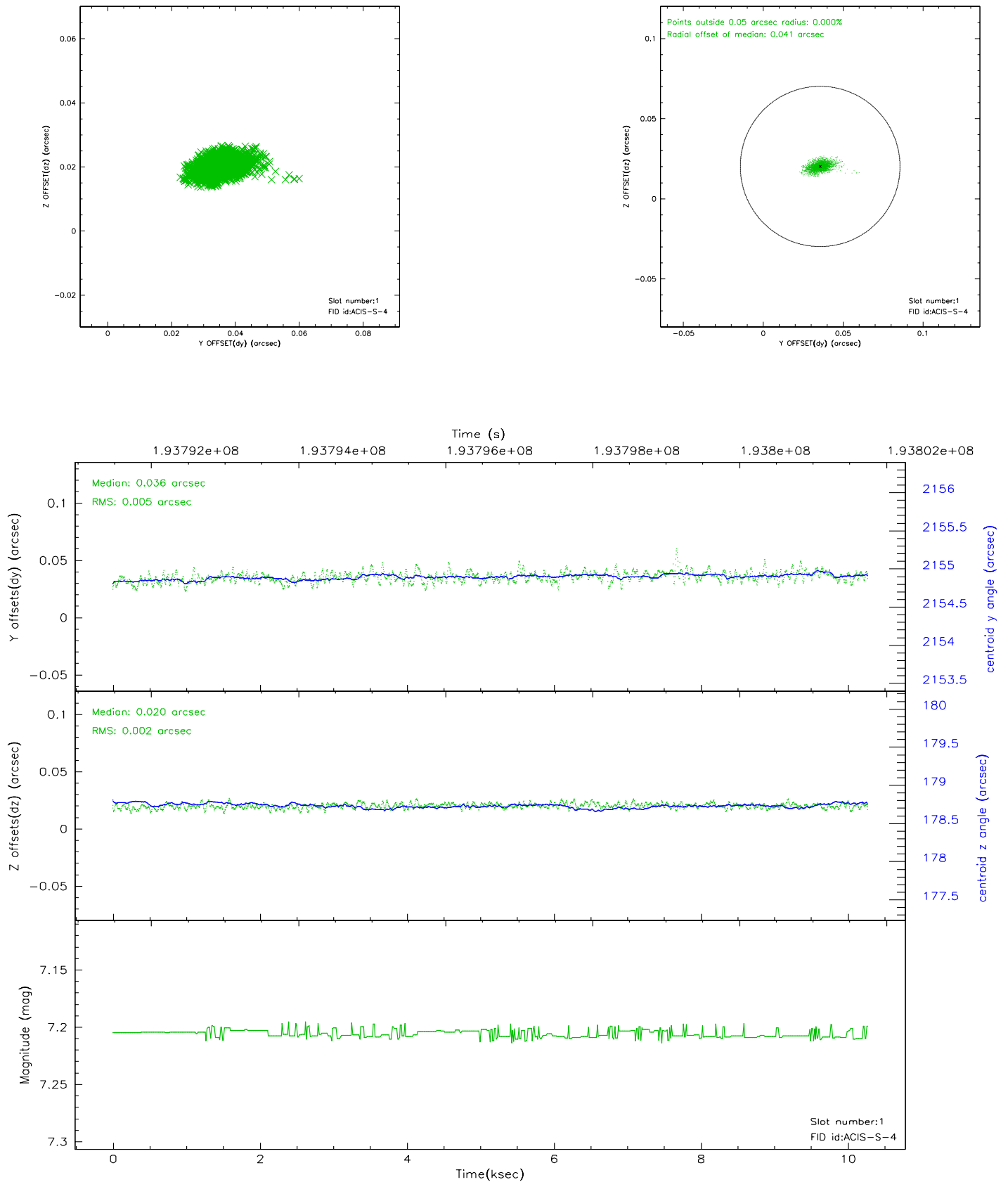


2.5 FID Slots

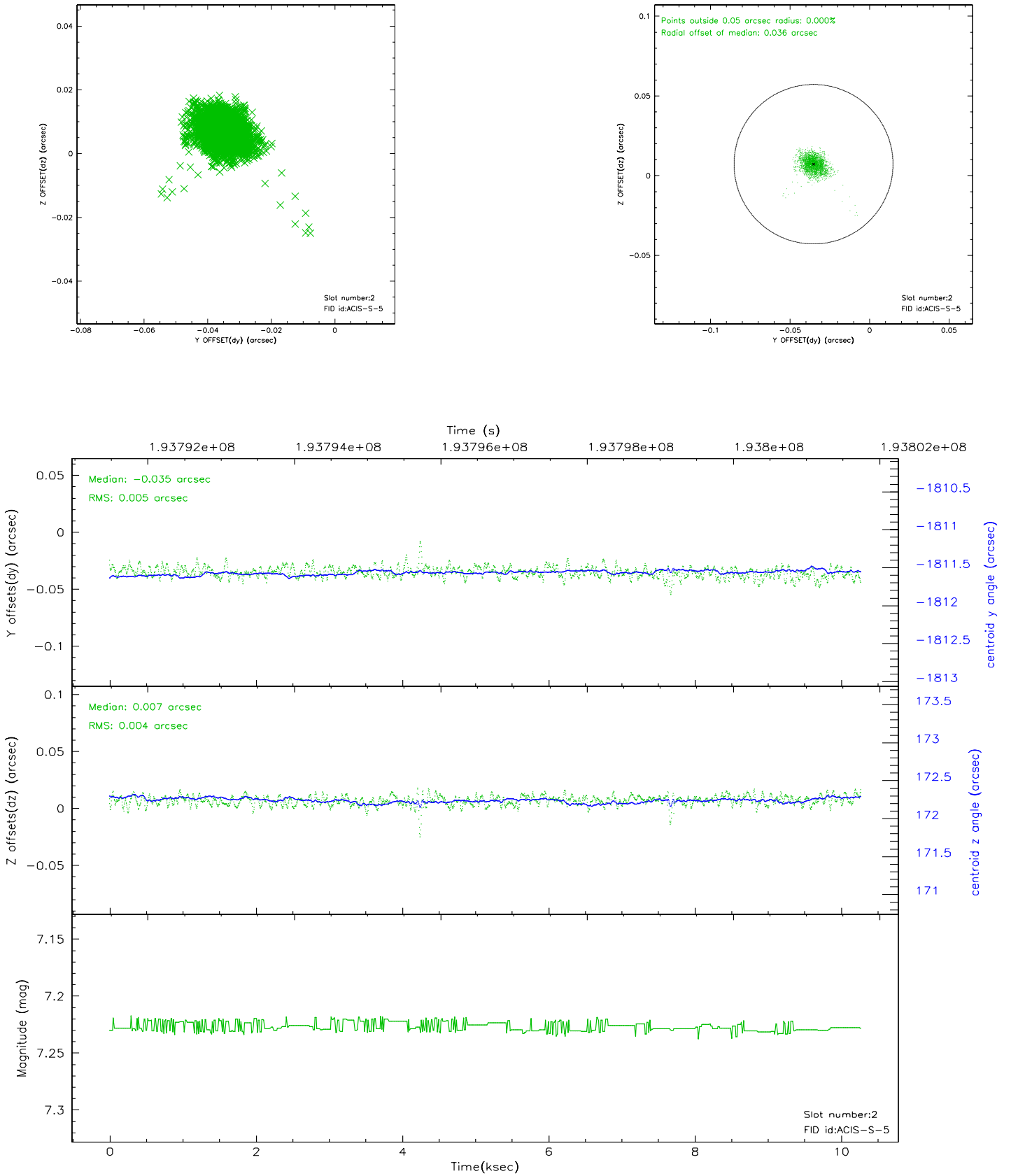
2.5.1 Slot 0



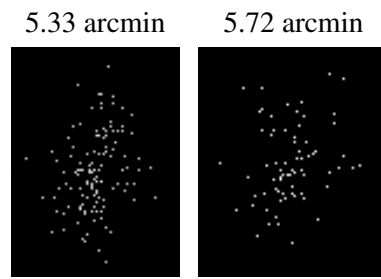
2.5.2 Slot 1



2.5.3 Slot 2



3 Point Sources



A Summary

A.1 Status

V&V Scientist	Jen Lauer
V&V Date (YYYY-MM-DD)	2006.06.04
V&V Edition	1
V&V Disposition and Status	OK
V&V Charge Time	10.274

A.2 Comments