

# V&V Reference Report

## L2 ASCDS Version : 7.6.7.2

Observation 4892 - L2 Version 001  
Chandra X-Ray Center

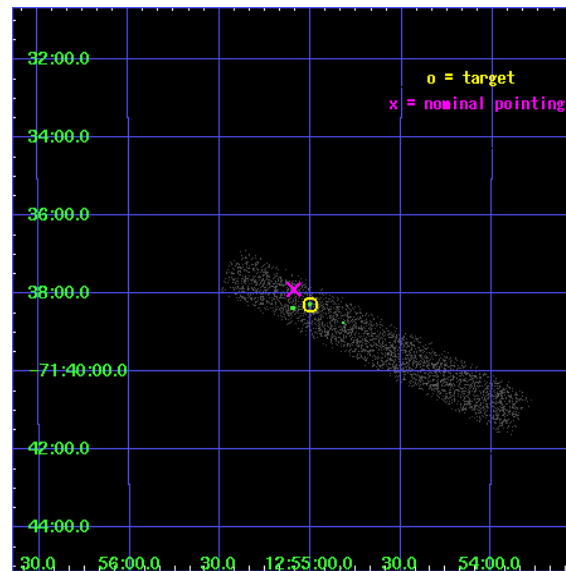
L2 Processing Date : May 31 2006

## Contents

<b>1</b>	<b>Front</b>	<b>2</b>
<b>2</b>	<b>OBI</b>	<b>3</b>
2.1	OBI . . . . .	3
2.1.1	Images . . . . .	3
2.1.2	Bias . . . . .	3
2.1.3	Parameters . . . . .	4
2.1.4	Events . . . . .	4
2.2	Compared Parameters . . . . .	5
2.3	Aspect . . . . .	6
2.4	Star Slots . . . . .	9
2.4.1	Slot 3 . . . . .	9
2.4.2	Slot 4 . . . . .	10
2.4.3	Slot 5 . . . . .	11
2.4.4	Slot 6 . . . . .	12
2.4.5	Slot 7 . . . . .	13
2.5	FID Slots . . . . .	14
2.5.1	Slot 0 . . . . .	14
2.5.2	Slot 1 . . . . .	15
2.5.3	Slot 2 . . . . .	16
<b>3</b>	<b>Point Sources</b>	<b>17</b>
<b>A</b>	<b>Summary</b>	<b>18</b>
A.1	Status . . . . .	18
A.2	Comments . . . . .	18

# 1 Front

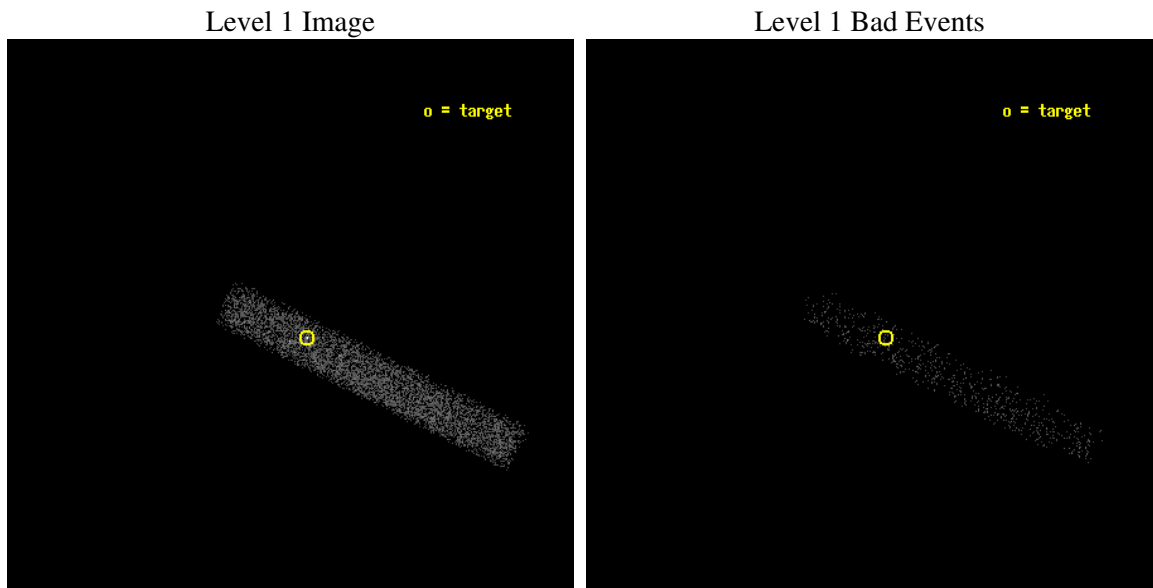
seq_num	700974
obs_id	4892
title	Continuing a Flux-limited Survey for X-ray Emission from Radio Jets
observer	Dr. Herman Marshall
object	1251-713
dtcycle	0
cycle	P
ra_targ	193.749583
dec_targ	-71.638444
ra_nom	193.77292721804
dec_nom	-71.631946750151
roll_nom	26.403776352734
revision	2
ontime	6587.6000981629
livetime	5974.6055669898
ontime7	6587.6000981629
l2events	3536



## 2 OBI

### 2.1 OBI

#### 2.1.1 Images



#### 2.1.2 Bias

Chip 7



### 2.1.3 Parameters

obi_num	0
ascdsver	7.6.7.2
caldsver	3.2.2
date	2006-05-31T12:47:00
revision	2

sched_exp_time	6406.000000
ontime	7369.2499631941
ontime7	7369.2499631941
l1events	8749

### 2.1.4 Events

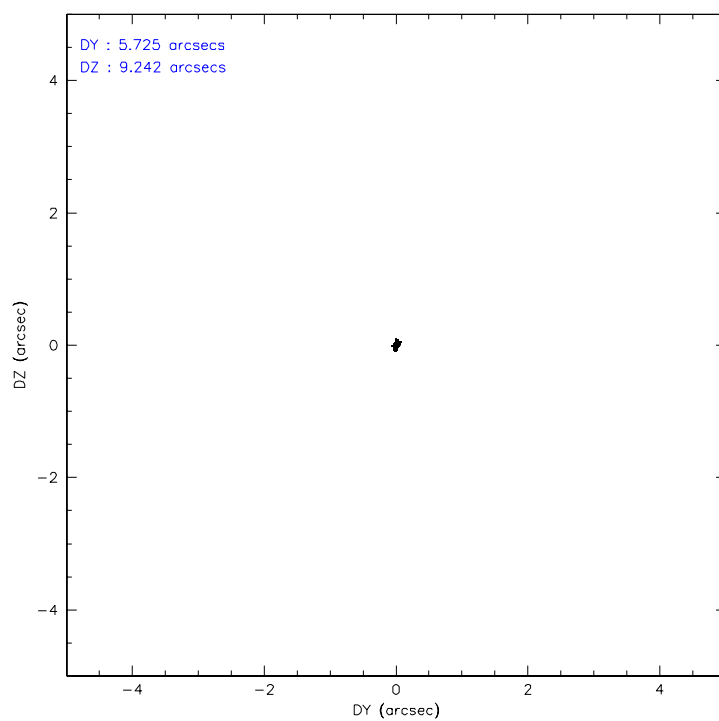
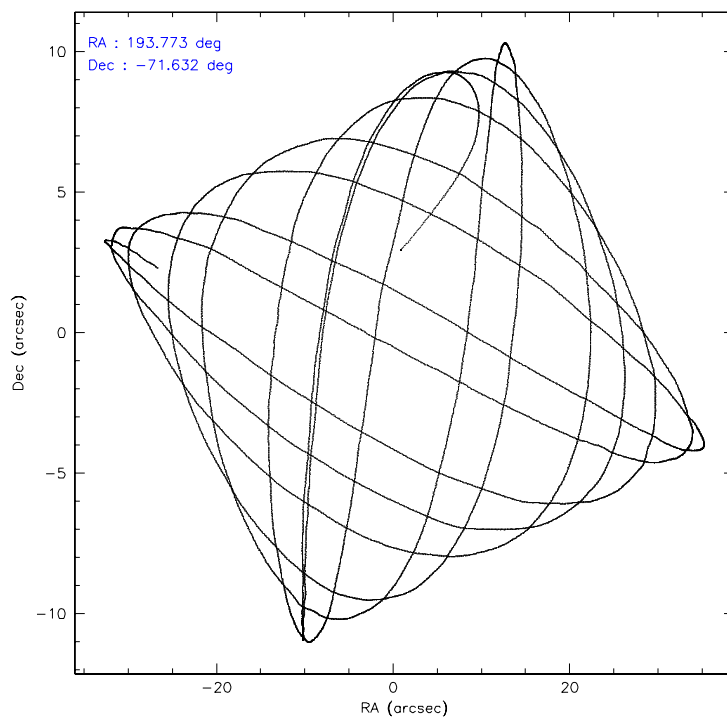
	<b>ccd 7</b>
level 1 events	8749
rejected events	5107
rejected %	58%

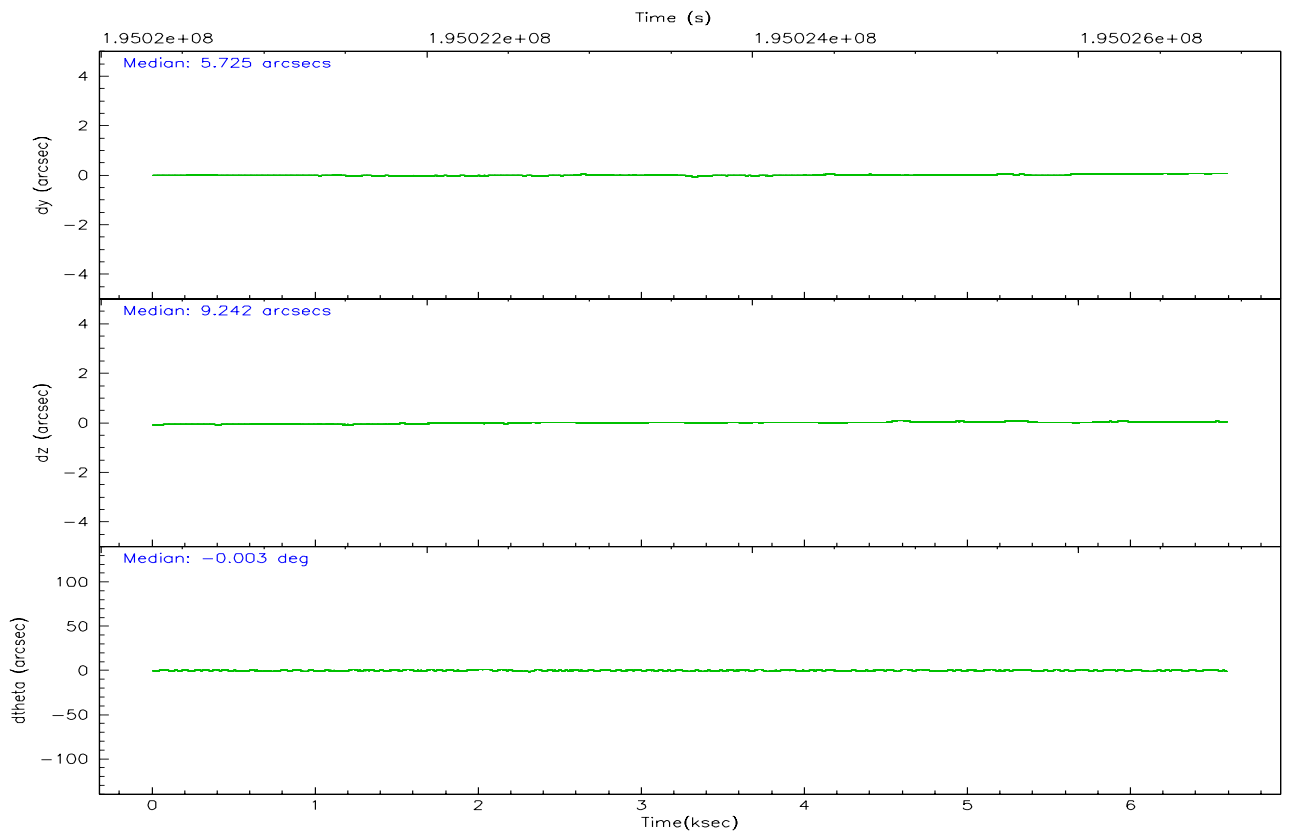
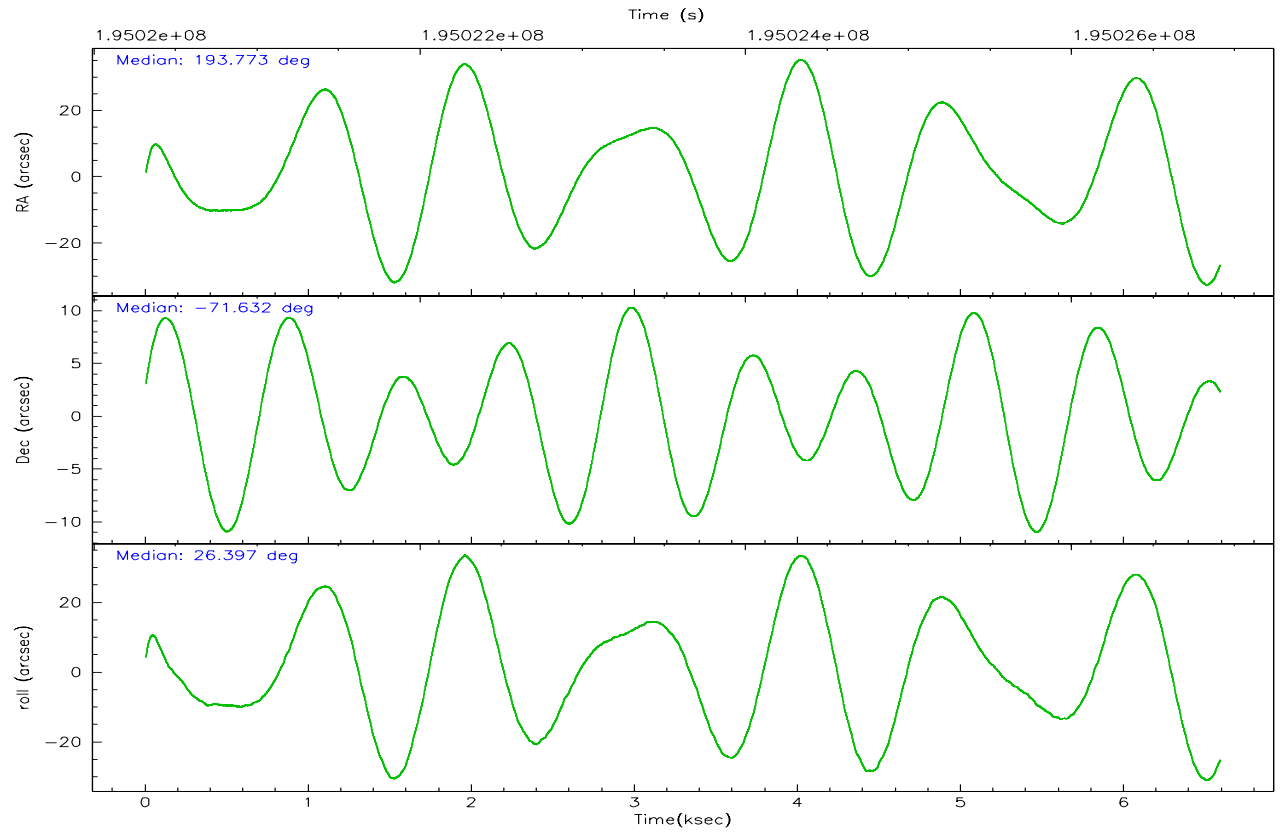
	<b>ccd 7</b>
grade 0 events	319
	3%
grade 1 events	6
	0%
grade 2 events	805
	9%
grade 3 events	462
	5%
grade 4 events	436
	4%
grade 5 events	659
	7%
grade 6 events	2015
	23%
grade 7 events	4047
	46%

## 2.2 Compared Parameters

Parameter	Planned	Actual	Parameter	Planned	Actual
Instrument	ACIS	ACIS	Obspar format version number	6	6
Detector	ACIS-7	ACIS-7	Obspar file type	PREDICTED	ACTUAL
Grating	NONE	NONE	Obspar update status	NONE	UPDATED
Data mode	FAINT	FAINT	On-chip summing requested	N	N
Observation mode	POINTING	POINTING	Subarray requested	CUSTOM	1/8
Pointing RA	193.726302	193.7729272180444	Subarray start row	1	1
Pointing Dec	-71.654869	-71.63194675015086	Subarray row count	128	128
Pointing Roll	26.202889	26.40377635273384	Alternating exposures requested	N	N
SIM focus pos (mm)	-0.684267	-0.6828225247311905	Primary exposure time	0.000000	0.4
SIM defocus (mm)	0	0.001444936568705701			
SIM translation stage pos (mm)	-178.632523	-178.6345592299333			
SIM translation stage offset (mm)	-11.5	-11.49796335307448			
Observation start time	195020507.184000	195019509.11019			
Observation start date	2004-03-07T04:20:43	2004-03-07T04:05:09			
Observation end time	195026913.184000	195027495.39805			
Observation end date	2004-03-07T06:07:29	2004-03-07T06:18:15			
Read mode	TIMED	TIMED			

## 2.3 Aspect





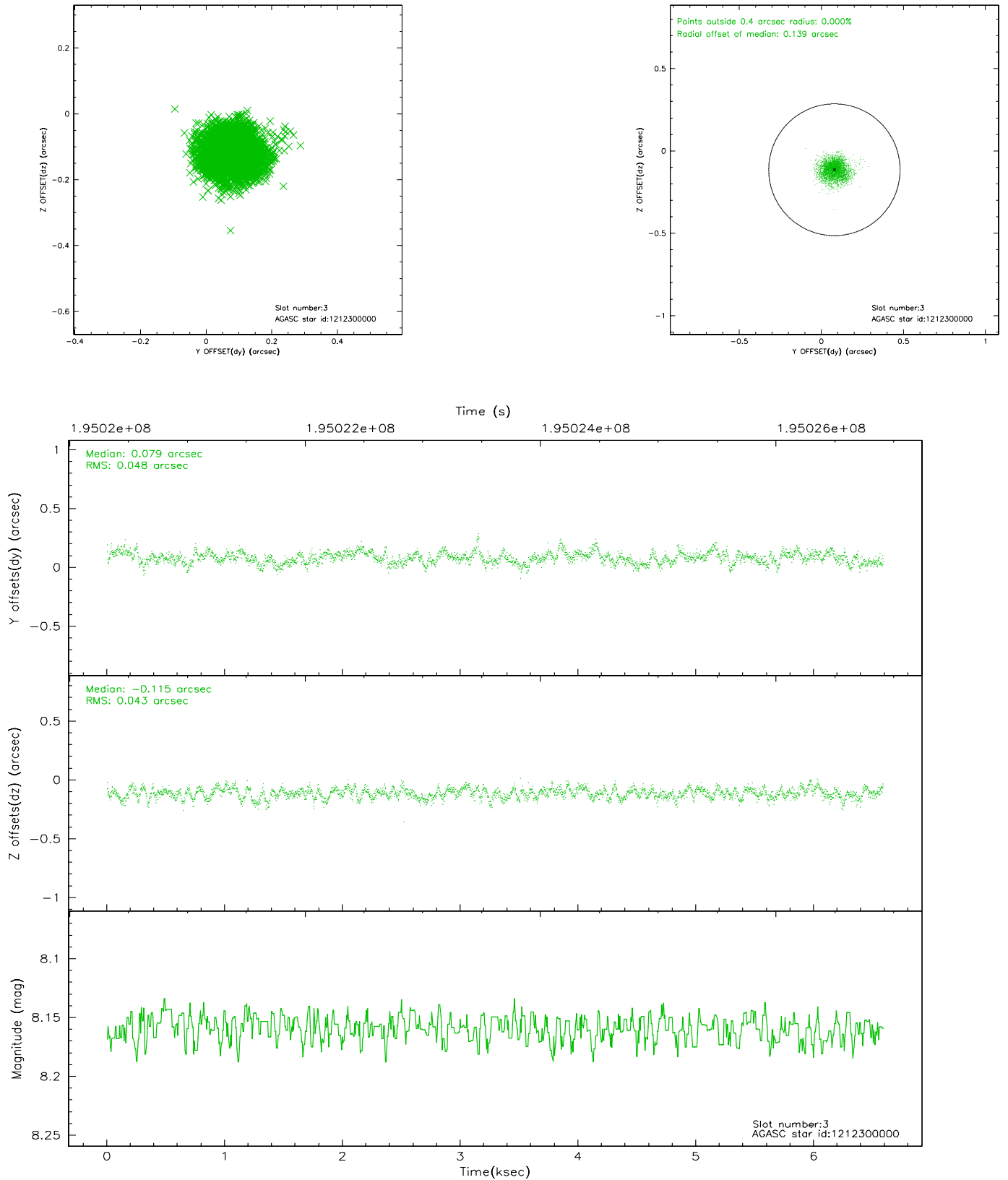
### Slot Statistics

slot	status	id	mag	n_pts	med_dy	med_dz	dr1	dr2	ra	dec	mean_y	mean_z
0	FID	ACIS-S-1	7.19	1607	0.109	0.121	0.006	0.010	0.000000	0.000000	938.46	-1962.71
1	FID	ACIS-S-5	7.23	1608	-0.100	0.138	0.006	0.010	0.000000	0.000000	-1810.15	-66.08
2	FID	ACIS-S-6	7.43	1607	-0.031	-0.249	0.007	0.011	0.000000	0.000000	403.05	578.39
3	GUIDE	1212300000	8.16	3214	0.079	-0.115	0.068	0.110	192.377853	-71.731473	-1494.05	408.92
4	GUIDE	1212302304	9.00	3213	-0.002	0.063	0.078	0.124	194.558777	-72.021174	245.01	-1597.12
5	GUIDE	1212302584	7.57	3215	-0.015	-0.056	0.061	0.094	193.415639	-71.273508	283.80	1389.06
6	GUIDE	1212303784	8.53	3211	-0.070	-0.120	0.057	0.093	194.832846	-71.359799	1606.65	380.93
7	GUIDE	1212288568	9.37	3213	0.009	0.226	0.108	0.173	194.588403	-72.199074	-15.61	-2182.47

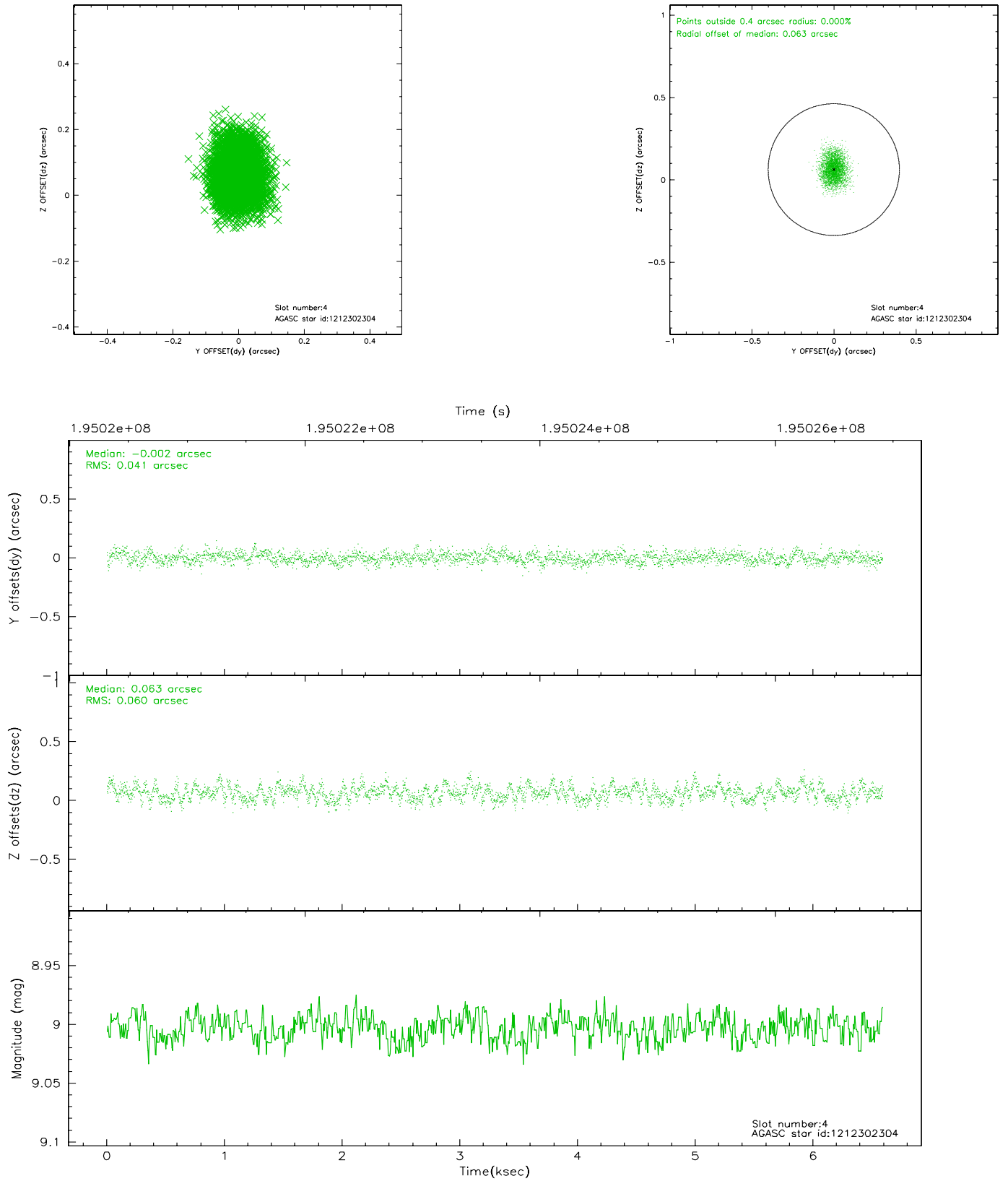


## 2.4 Star Slots

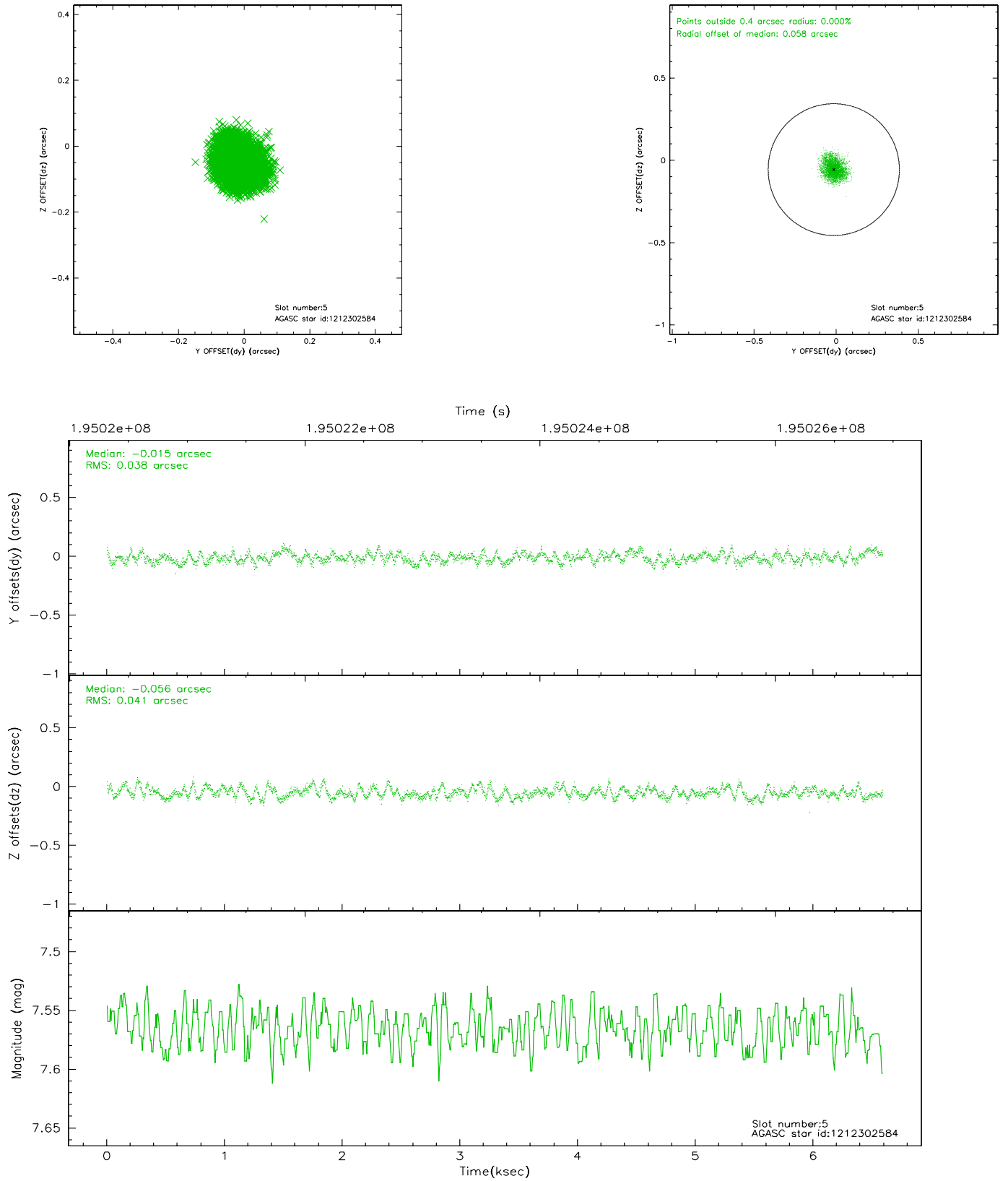
### 2.4.1 Slot 3



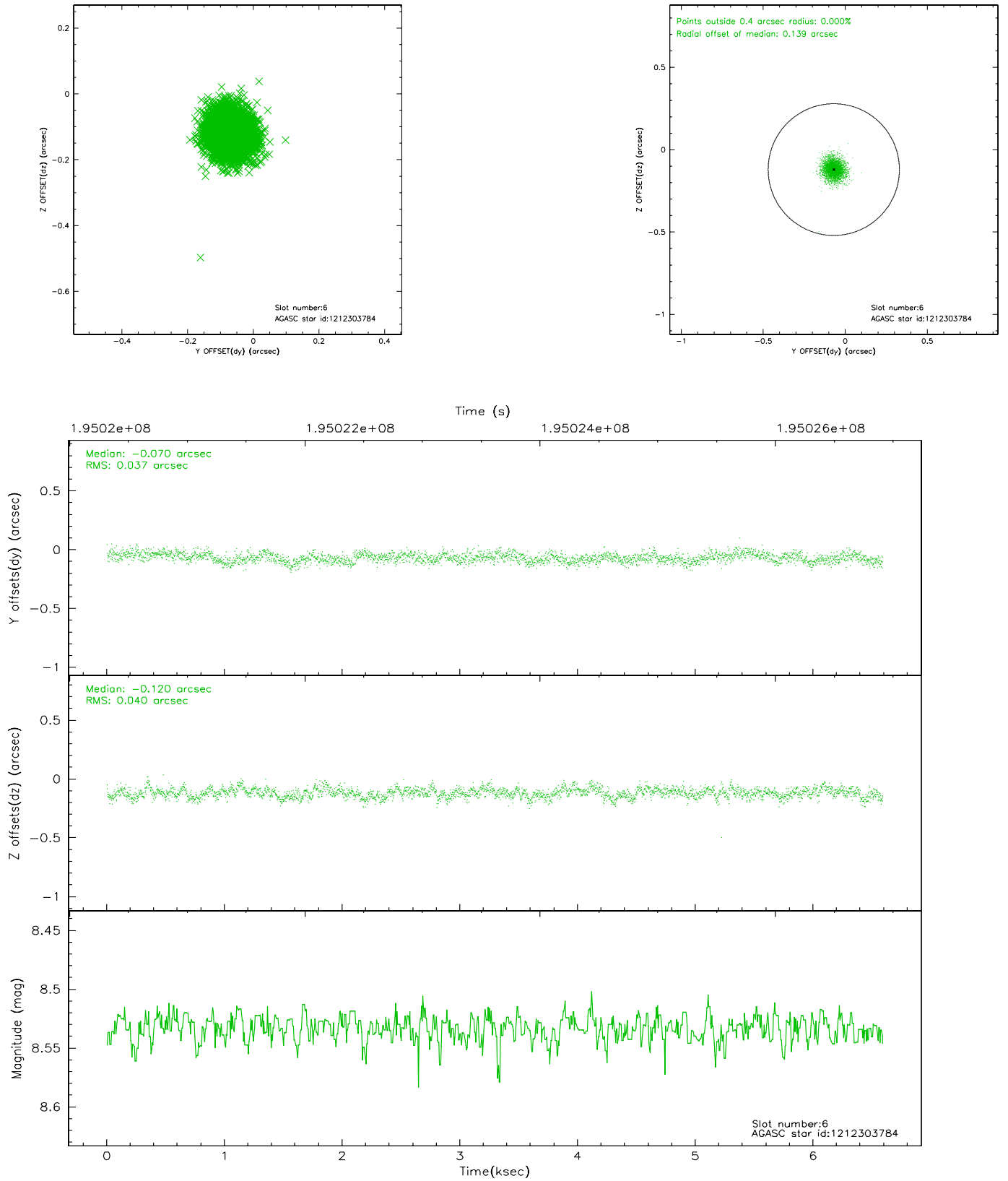
## 2.4.2 Slot 4



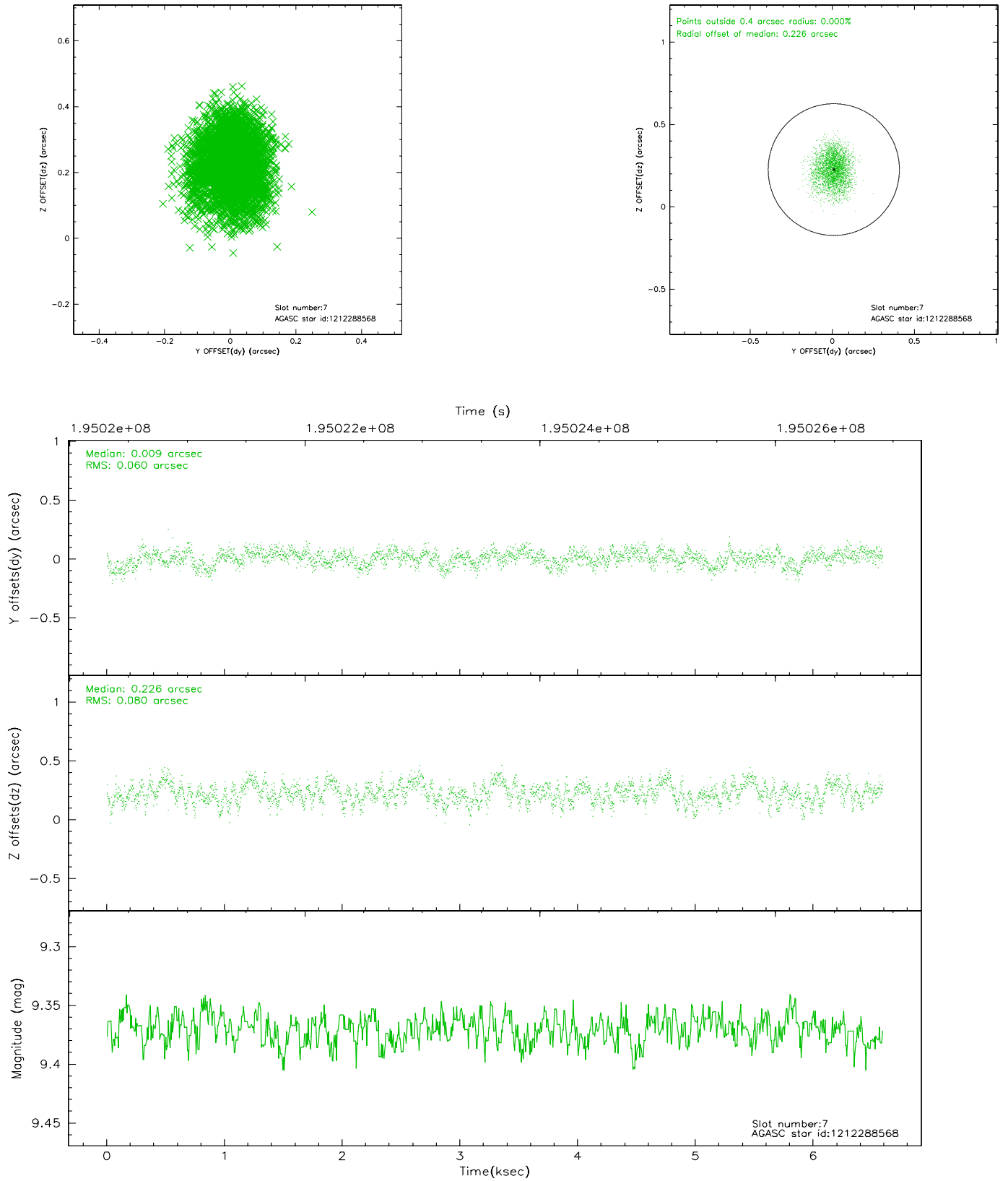
### 2.4.3 Slot 5



## 2.4.4 Slot 6

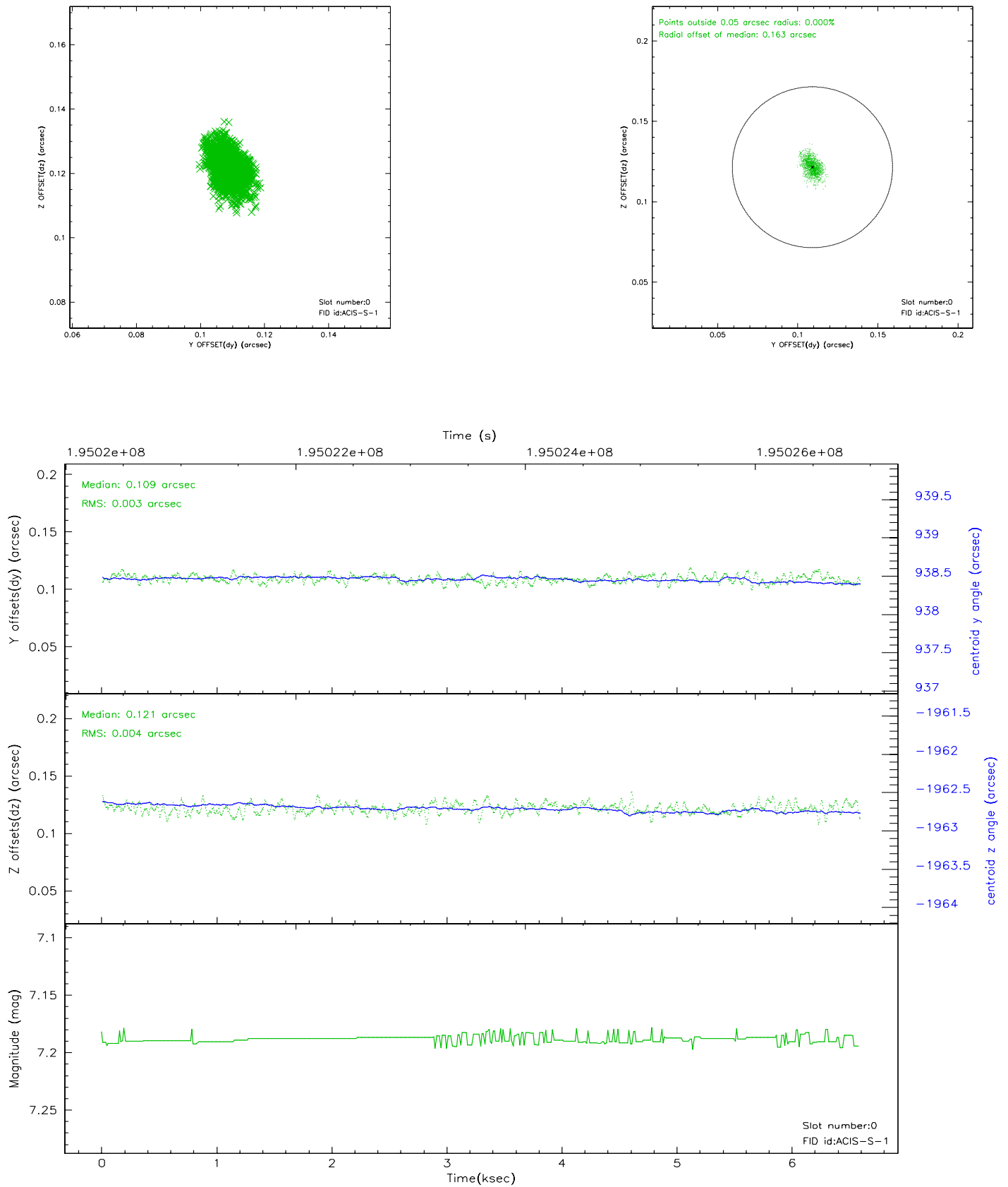


## 2.4.5 Slot 7

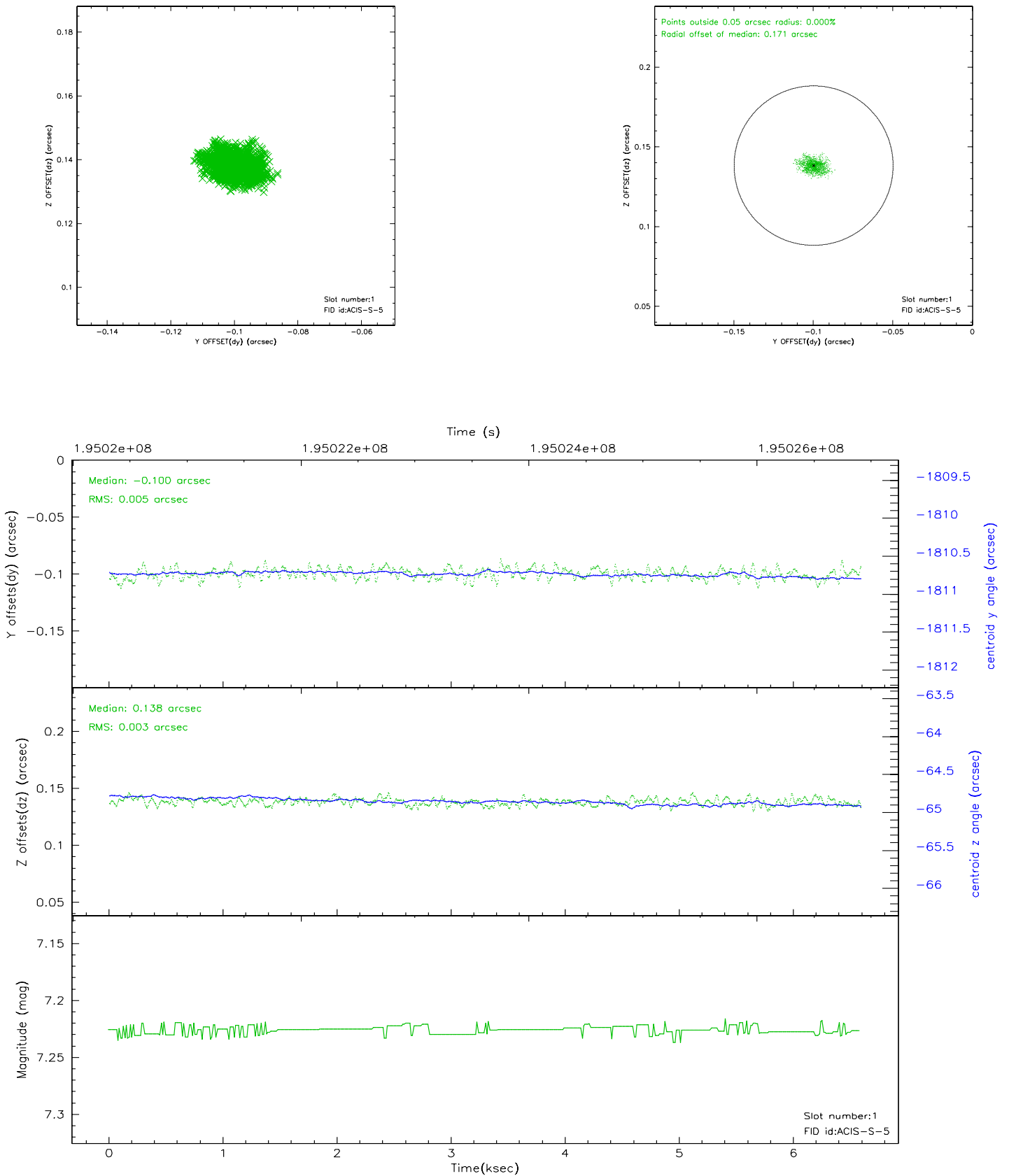


## 2.5 FID Slots

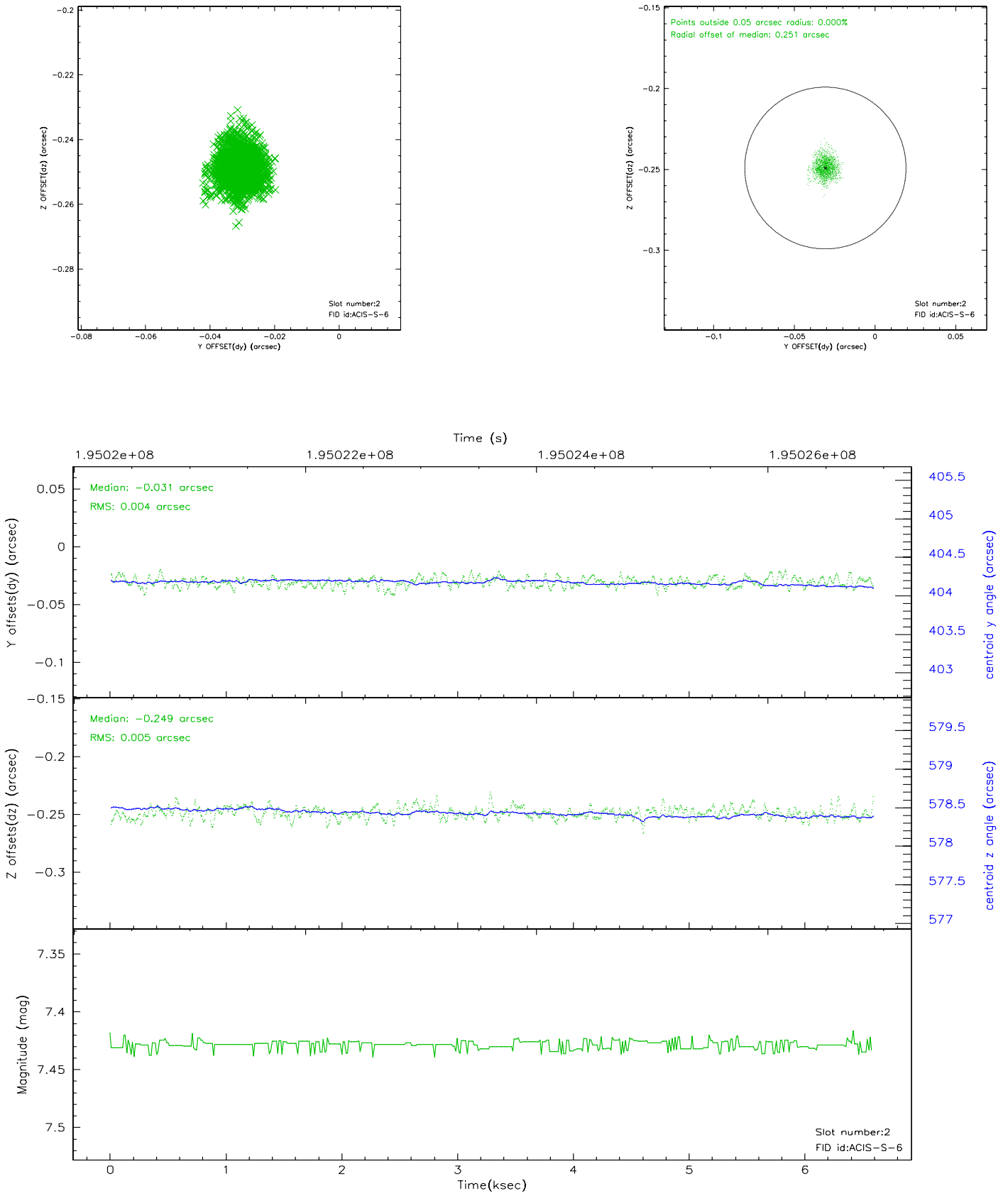
### 2.5.1 Slot 0



## 2.5.2 Slot 1



### 2.5.3 Slot 2





### 3 Point Sources

## A Summary

### A.1 Status

V&V Scientist	Jen Lauer
V&V Date (YYYY-MM-DD)	2006.05.31
V&V Edition	1
V&V Disposition and Status	OK
V&V Charge Time	6.587

### A.2 Comments