

V&V Reference Report

L2 ASCDS Version : 7.6.7.1

Observation 4885 - L2 Version 001
Chandra X-Ray Center

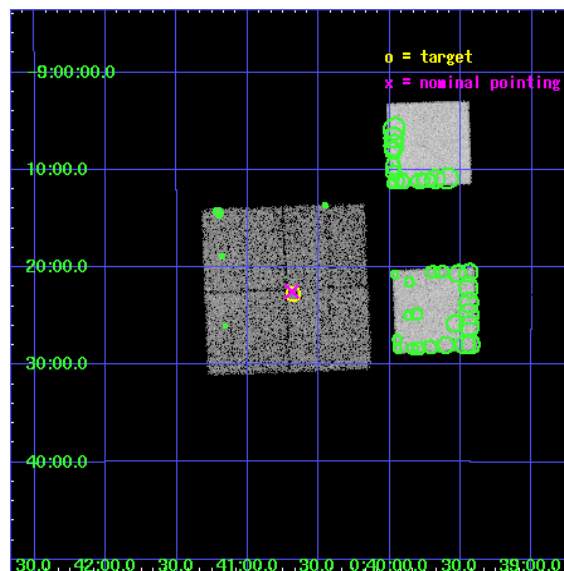
L2 Processing Date : Apr 19 2006

Contents

1	Front	2
2	OBI	3
2.1	OBI	3
2.1.1	Images	3
2.1.2	Bias	3
2.1.3	Parameters	4
2.1.4	Events	4
2.2	Compared Parameters	5
2.3	Aspect	6
2.4	Star Slots	9
2.4.1	Slot 3	9
2.4.2	Slot 4	10
2.4.3	Slot 5	11
2.4.4	Slot 6	12
2.4.5	Slot 7	13
2.5	FID Slots	14
2.5.1	Slot 0	14
2.5.2	Slot 1	15
2.5.3	Slot 2	16
3	Point Sources	17
A	Summary	18
A.1	Status	18
A.2	Comments	18

1 Front

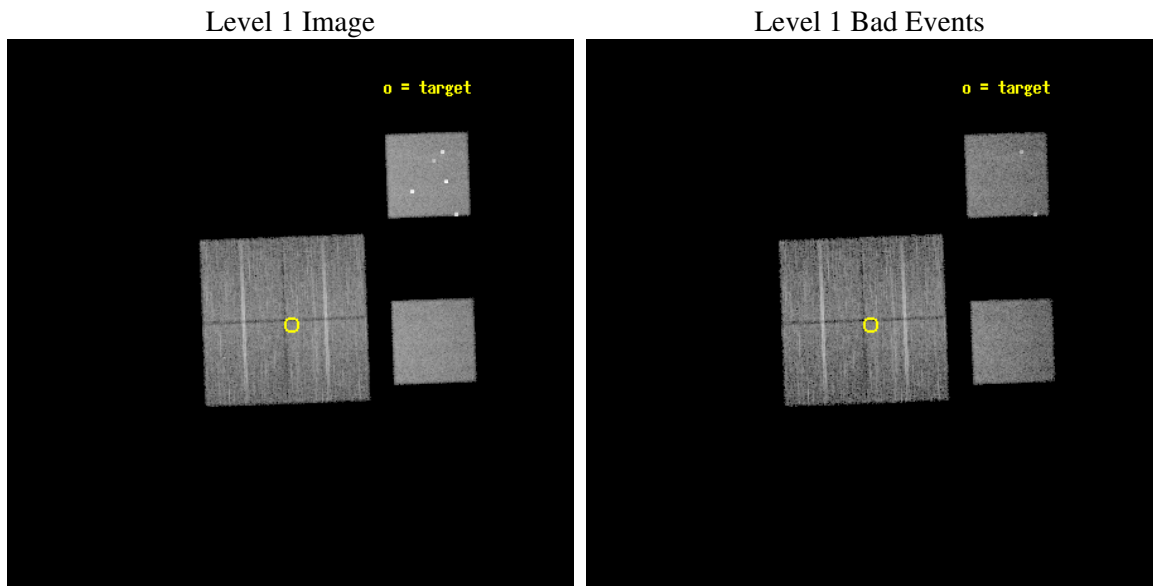
seq_num	700967
obs_id	4885
title	AGN in low-redshift Clusters of Galaxies
observer	Prof. Paul Martini
object	Abell85-P5
dtcycle	0
cycle	P
ra_targ	10.170417
dec_targ	-9.379167
ra_nom	10.172403538582
dec_nom	-9.3749557196119
roll_nom	87.878207803522
revision	3
ontime	9759.9999636412
livetime	9636.4129673351
ontime0	9759.9999636412
ontime1	9759.9785535932
ontime2	9750.276992768
ontime3	9759.9999636412
ontime5	9759.9999636412
ontime7	9759.9999636412
l2events	112457



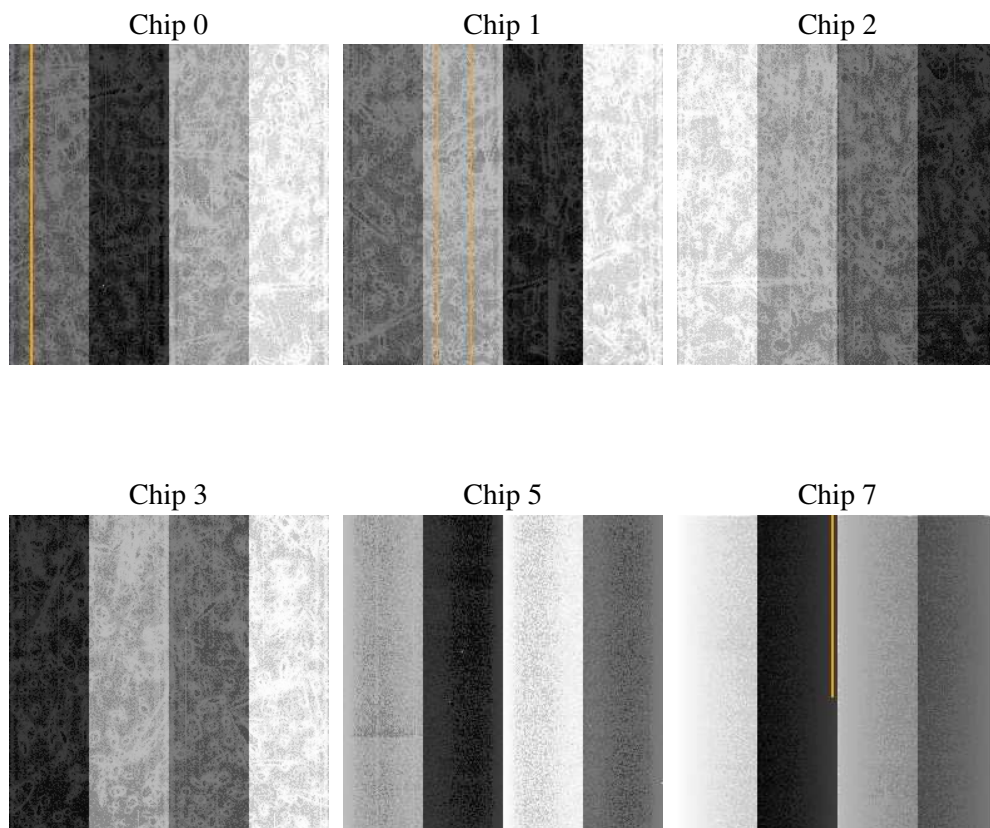
2 OBI

2.1 OBI

2.1.1 Images



2.1.2 Bias



2.1.3 Parameters

obi_num	1
ascdsver	7.6.7.1
caldbver	3.2.1
date	2006-04-19T08:18:01
revision	3

sched_exp_time	10000.000000
ontime	9761.9279148579
ontime0	9761.9279148579
ontime1	9761.9279148579
ontime2	9752.2049439847
ontime3	9761.9279148579
ontime5	9761.9278949499
ontime7	9761.9279148579
l1events	497487

2.1.4 Events

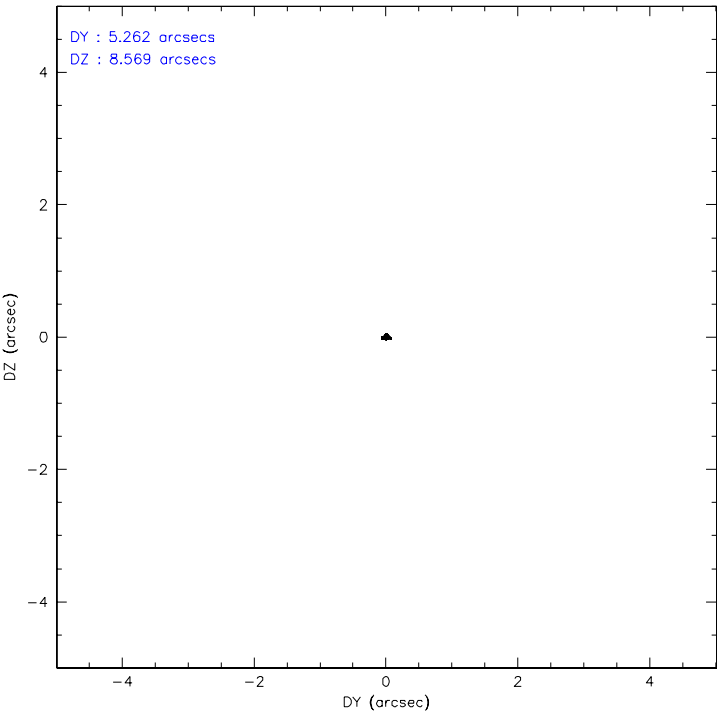
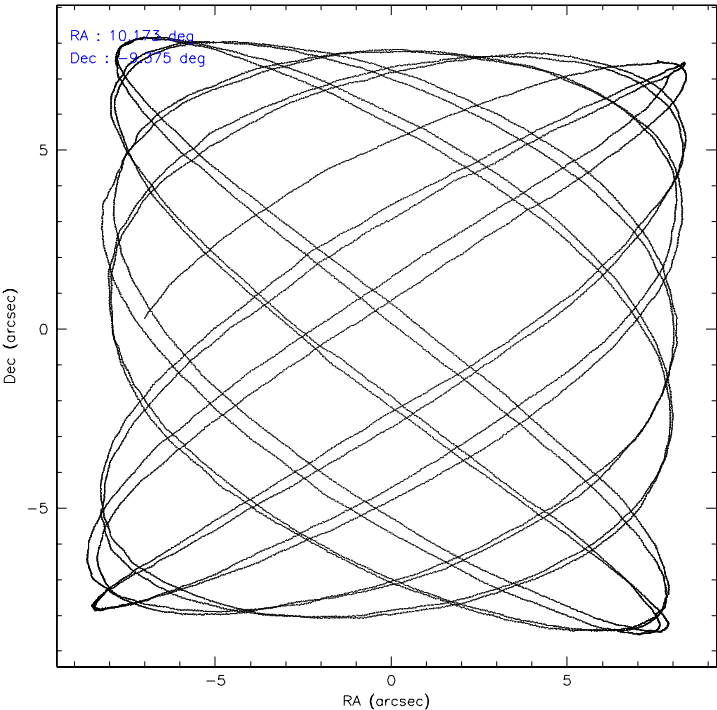
	ccd 0	ccd 1	ccd 2	ccd 3	ccd 5	ccd 7
level 1 events	71861	66850	72650	71422	116516	98188
rejected events	61775	56921	64087	62839	62287	61148
rejected %	85%	85%	88%	87%	53%	62%

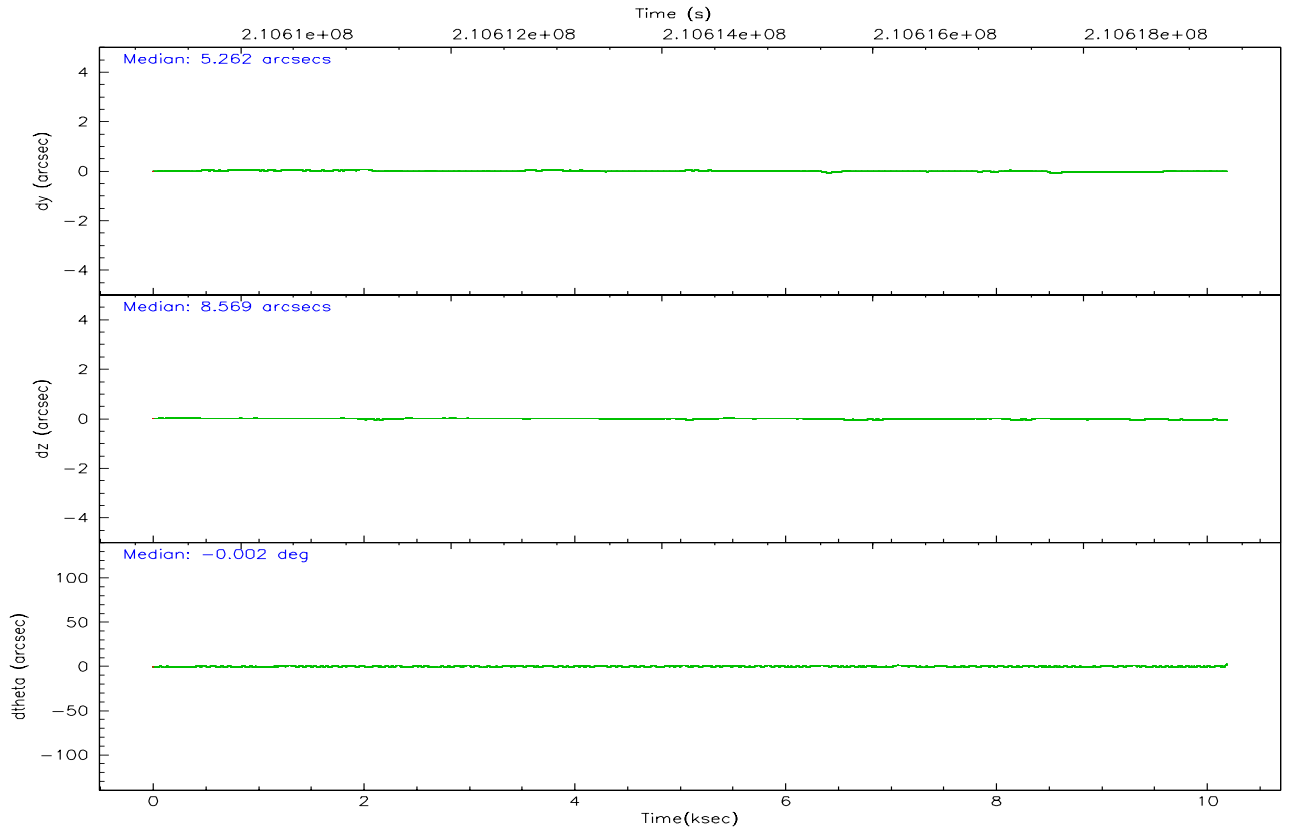
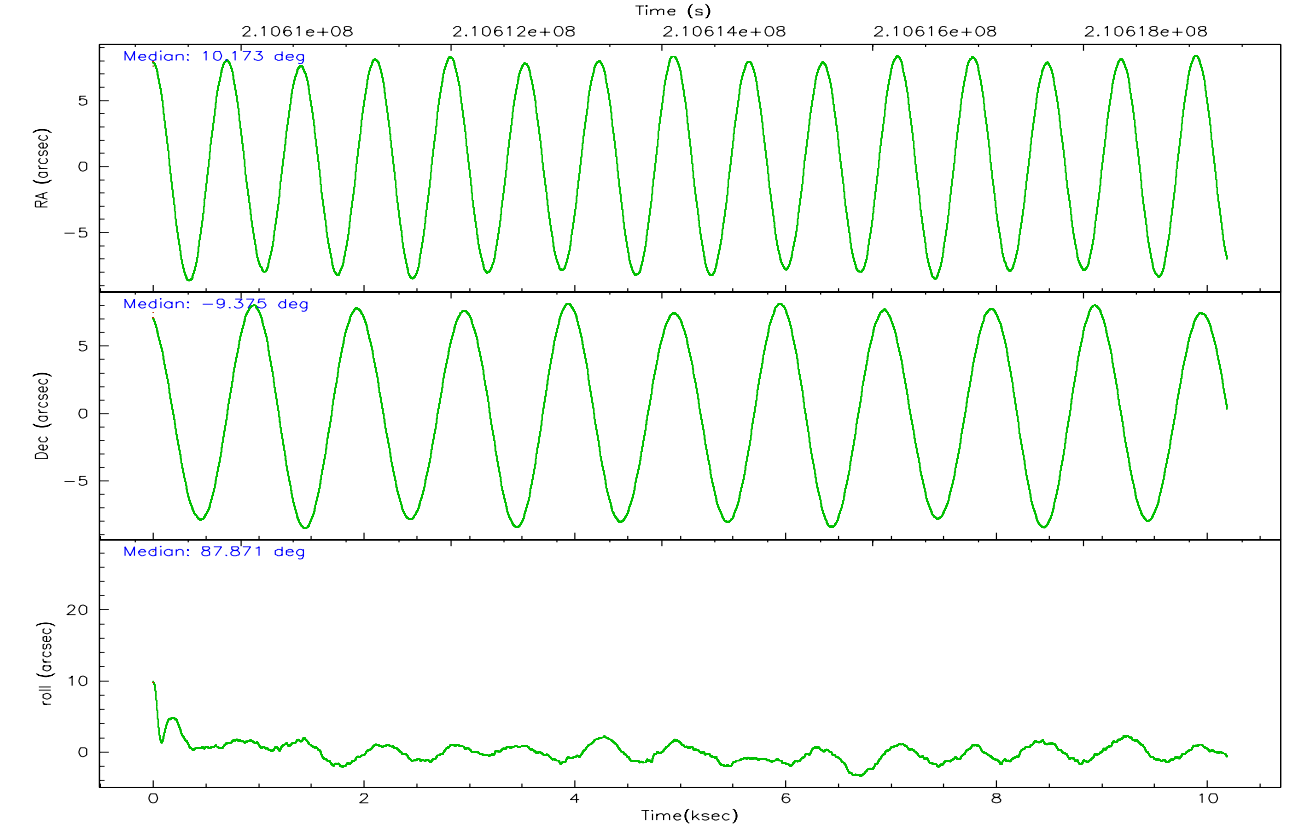
	ccd 0	ccd 1	ccd 2	ccd 3	ccd 5	ccd 7
grade 0 events	4792	4326	3781	3848	8875	1971
	6%	6%	5%	5%	7%	2%
grade 1 events	44	38	51	47	261	63
	0%	0%	0%	0%	0%	0%
grade 2 events	1968	2002	1770	1642	15302	9288
	2%	2%	2%	2%	13%	9%
grade 3 events	931	954	823	842	1127	1816
	1%	1%	1%	1%	0%	1%
grade 4 events	844	882	812	820	940	1698
	1%	1%	1%	1%	0%	1%
grade 5 events	3150	2984	2817	3175	5502	6581
	4%	4%	3%	4%	4%	6%
grade 6 events	1553	1771	1381	1431	28010	22277
	2%	2%	1%	2%	24%	22%
grade 7 events	58579	53893	61215	59617	56499	54494
	81%	80%	84%	83%	48%	55%

2.2 Compared Parameters

Parameter	Planned	Actual	Parameter	Planned	Actual
Instrument	ACIS	ACIS	Obspar format version number	6	6
Detector	ACIS-012357	ACIS-012357	Obspar file type	PREDICTED	ACTUAL
Grating	NONE	NONE	Obspar update status	NONE	UPDATED
Data mode	VFAINT	VFAINT	On-chip summing requested	N	N
Observation mode	POINTING	POINTING	Subarray requested	NONE	NONE
Pointing RA	10.185489	10.1724035385823	Alternating exposures requested	N	N
Pointing Dec	-9.399121	-9.374955719611934	Primary exposure time	0.000000	3.2
Pointing Roll	87.671649	87.87820780352156			
SIM focus pos (mm)	-0.782348	-0.7809083437167272			
SIM defocus (mm)	0	0.001439871863259334			
SIM translation stage pos (mm)	-233.592463	-233.5874344608287			
SIM translation stage offset (mm)	0	-0.005018542100998502			
Observation start time	210609356.184000	210608981.31208			
Observation start date	2004-09-03T14:34:52	2004-09-03T14:29:41			
Observation end time	210619356.184000	210619490.63755			
Observation end date	2004-09-03T17:21:32	2004-09-03T17:24:50			
Read mode	TIMED	TIMED			

2.3 Aspect



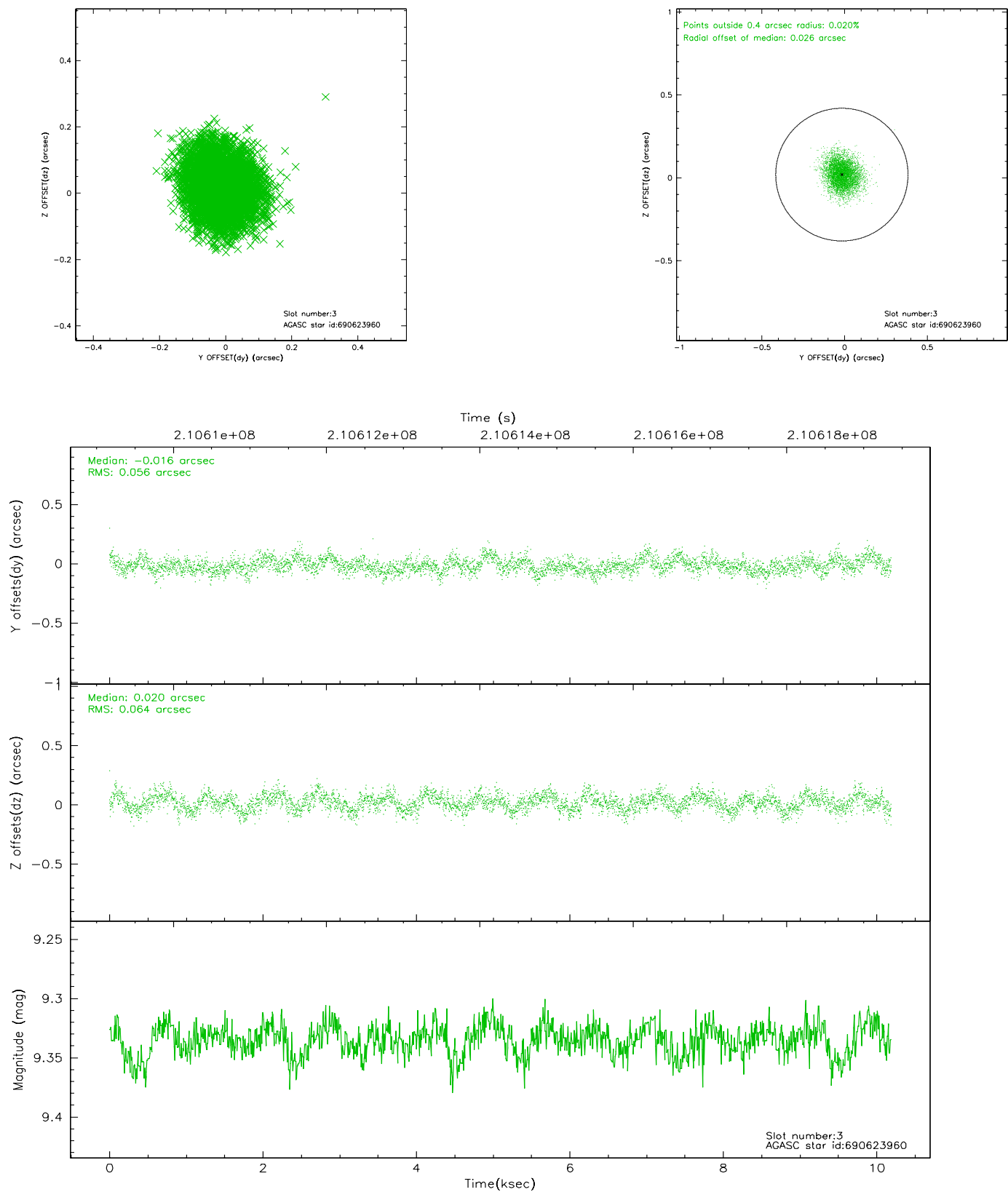


Slot Statistics

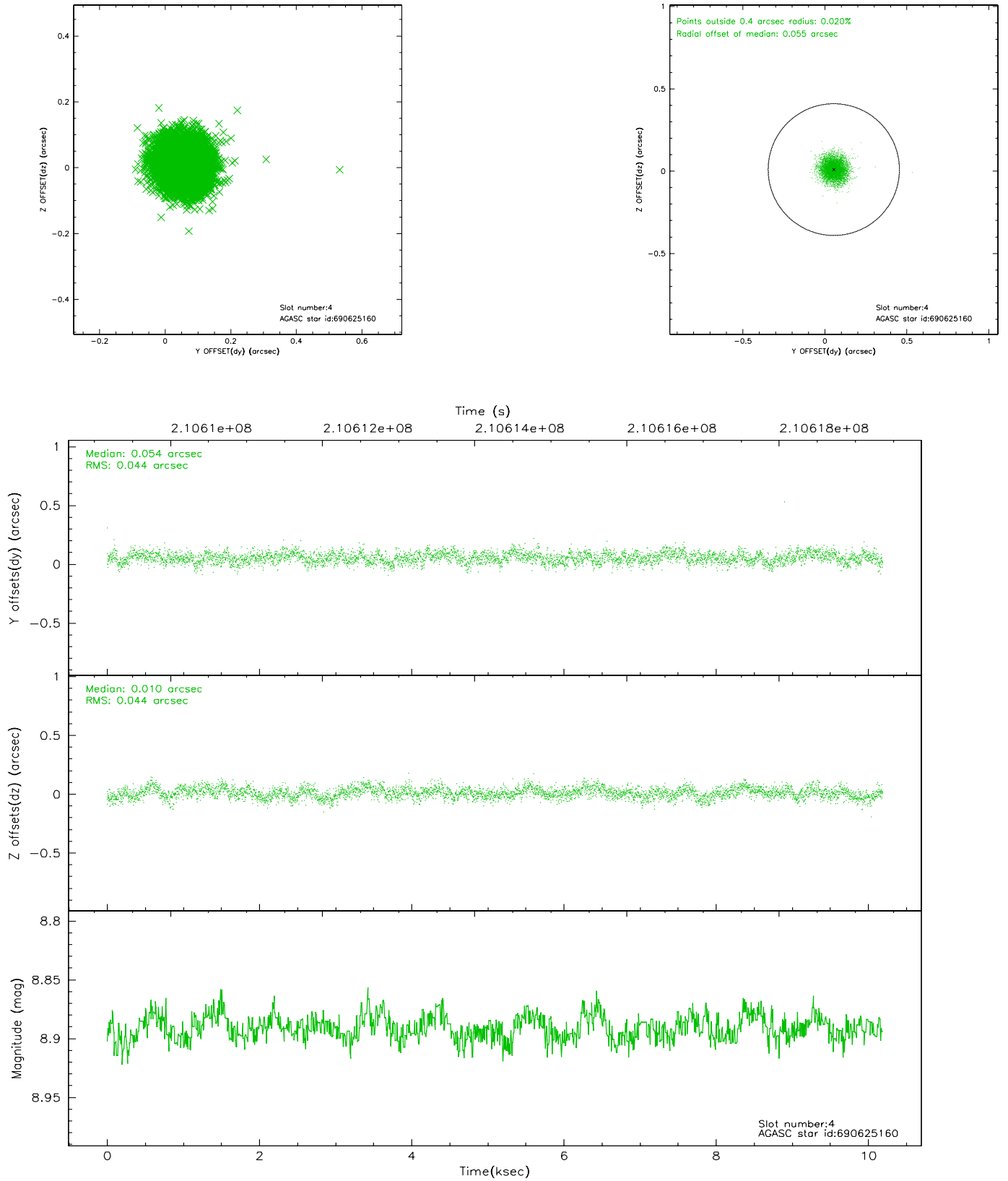
slot	status	id	mag	n_pts	med_dy	med_dz	dr1	dr2	ra	dec	mean_y	mean_z
0	FID	ACIS-I-1	7.24	2486	-0.002	0.063	0.006	0.010	0.000000	0.000000	934.47	-831.93
1	FID	ACIS-I-5	7.23	2486	-0.132	0.037	0.005	0.009	0.000000	0.000000	-1813.49	1065.26
2	FID	ACIS-I-6	7.25	2486	0.043	-0.029	0.007	0.010	0.000000	0.000000	399.48	1710.29
3	GUIDE	690623960	9.33	4965	-0.016	0.020	0.090	0.147	10.570675	-9.168103	886.23	-1333.49
4	GUIDE	690625160	8.89	4971	0.054	0.010	0.066	0.106	10.224219	-9.960066	-2011.75	-219.44
5	GUIDE	690625776	9.15	4972	-0.065	0.096	0.094	0.152	10.846019	-9.315741	393.37	-2333.58
6	GUIDE	690632656	9.26	4970	0.087	-0.050	0.099	0.158	10.397747	-9.674983	-961.60	-793.26
7	GUIDE	690637960	6.80	4903	-0.060	-0.069	0.057	0.089	10.711431	-9.921690	-1805.32	-1940.19

2.4 Star Slots

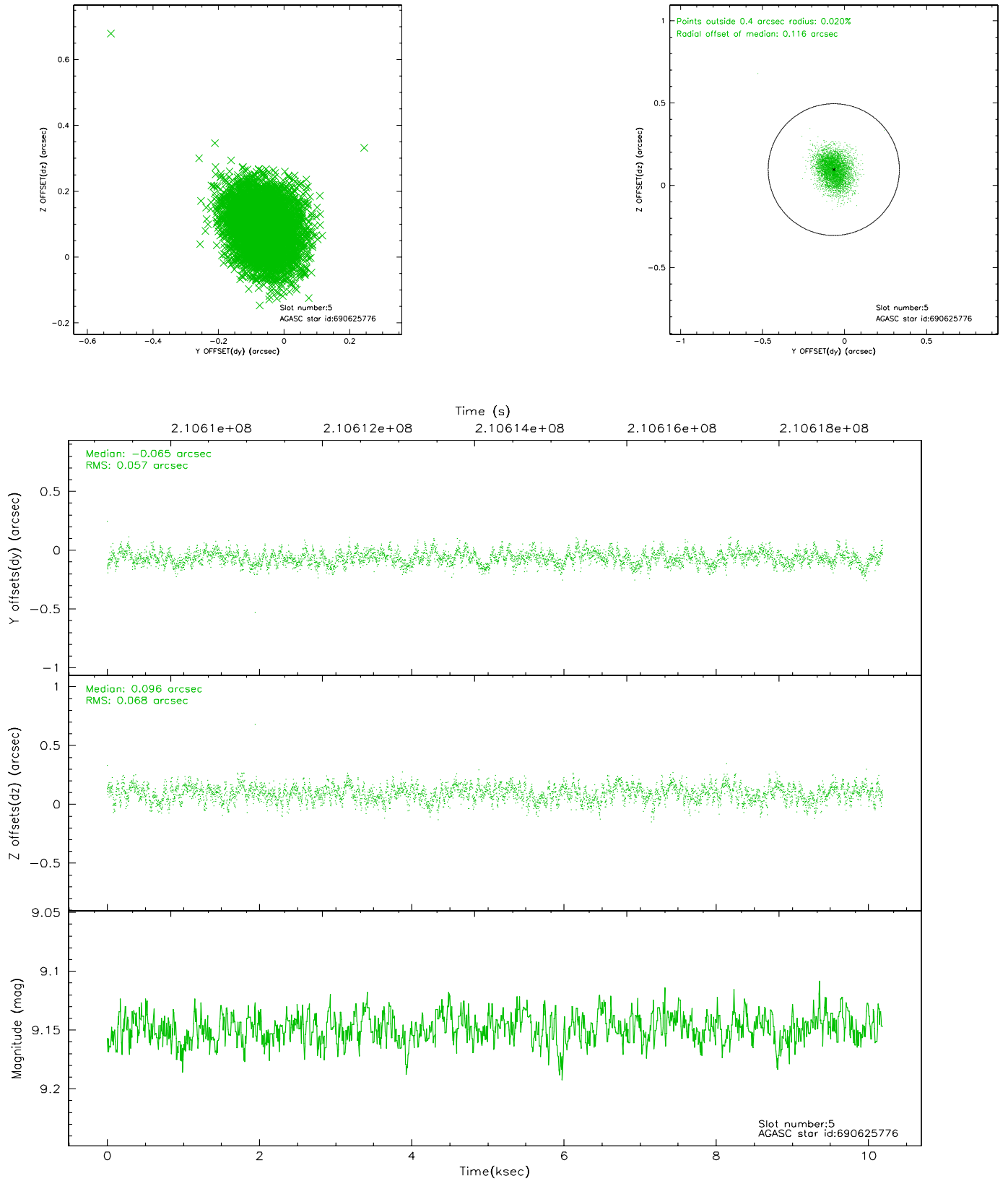
2.4.1 Slot 3



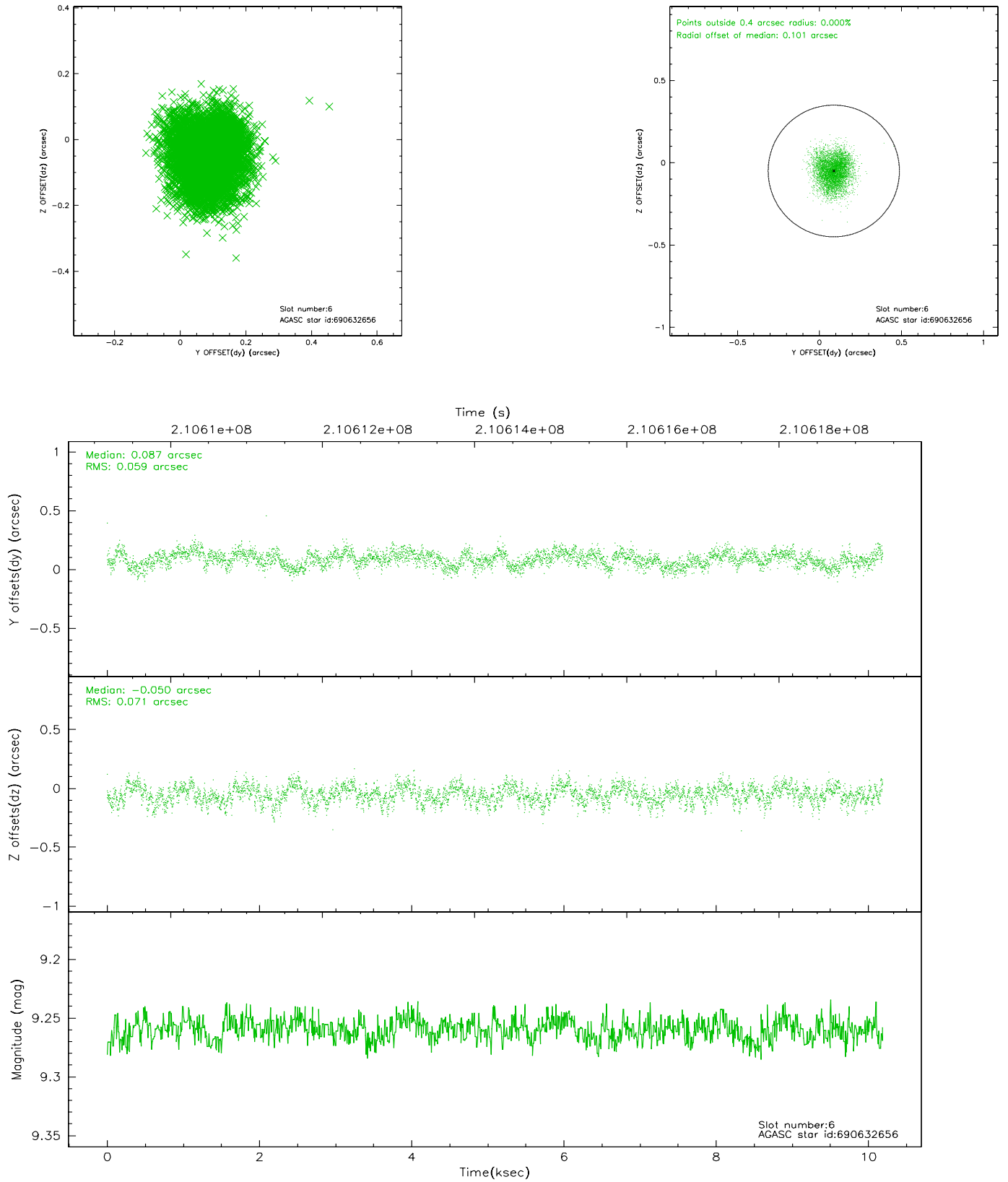
2.4.2 Slot 4



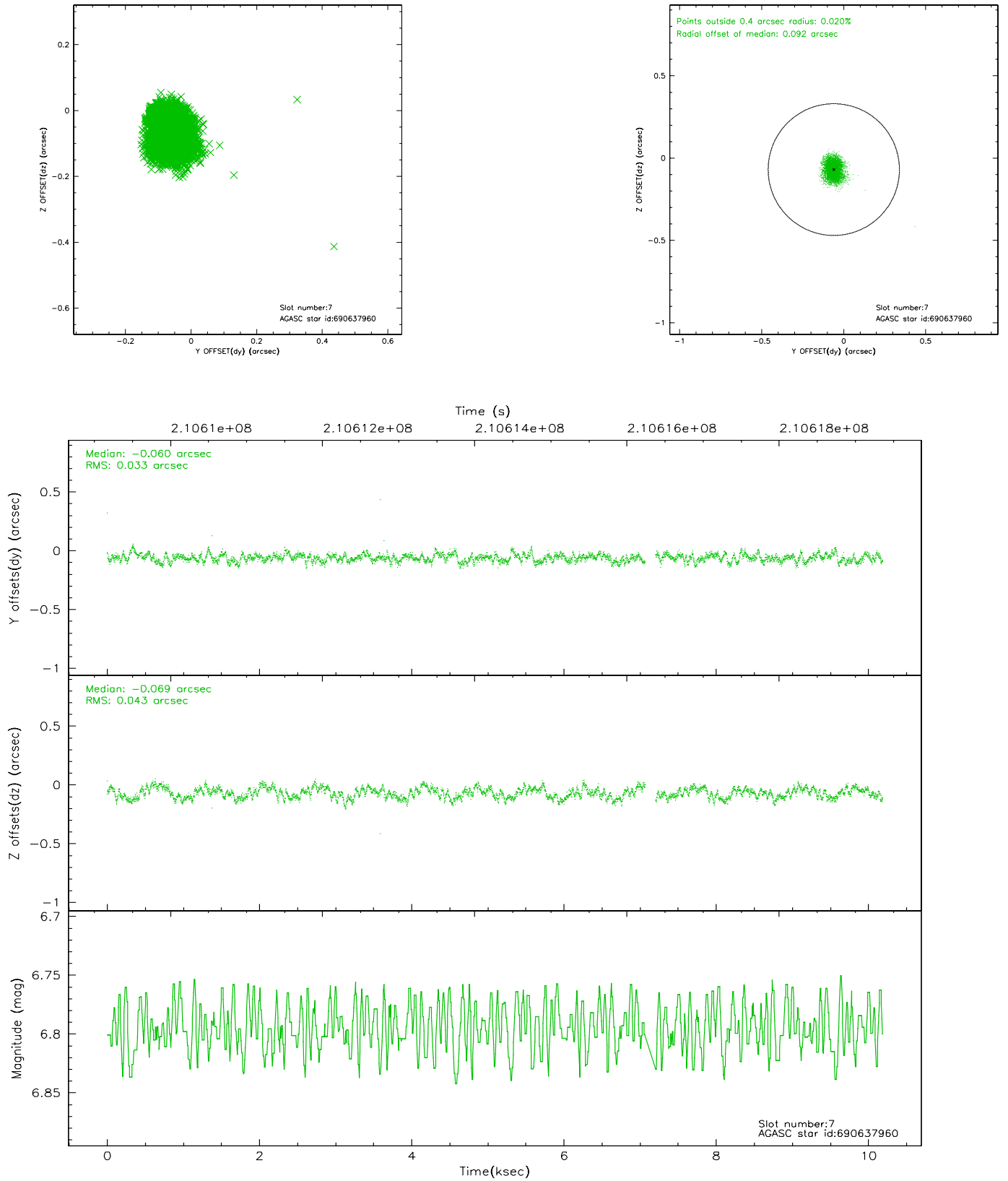
2.4.3 Slot 5



2.4.4 Slot 6

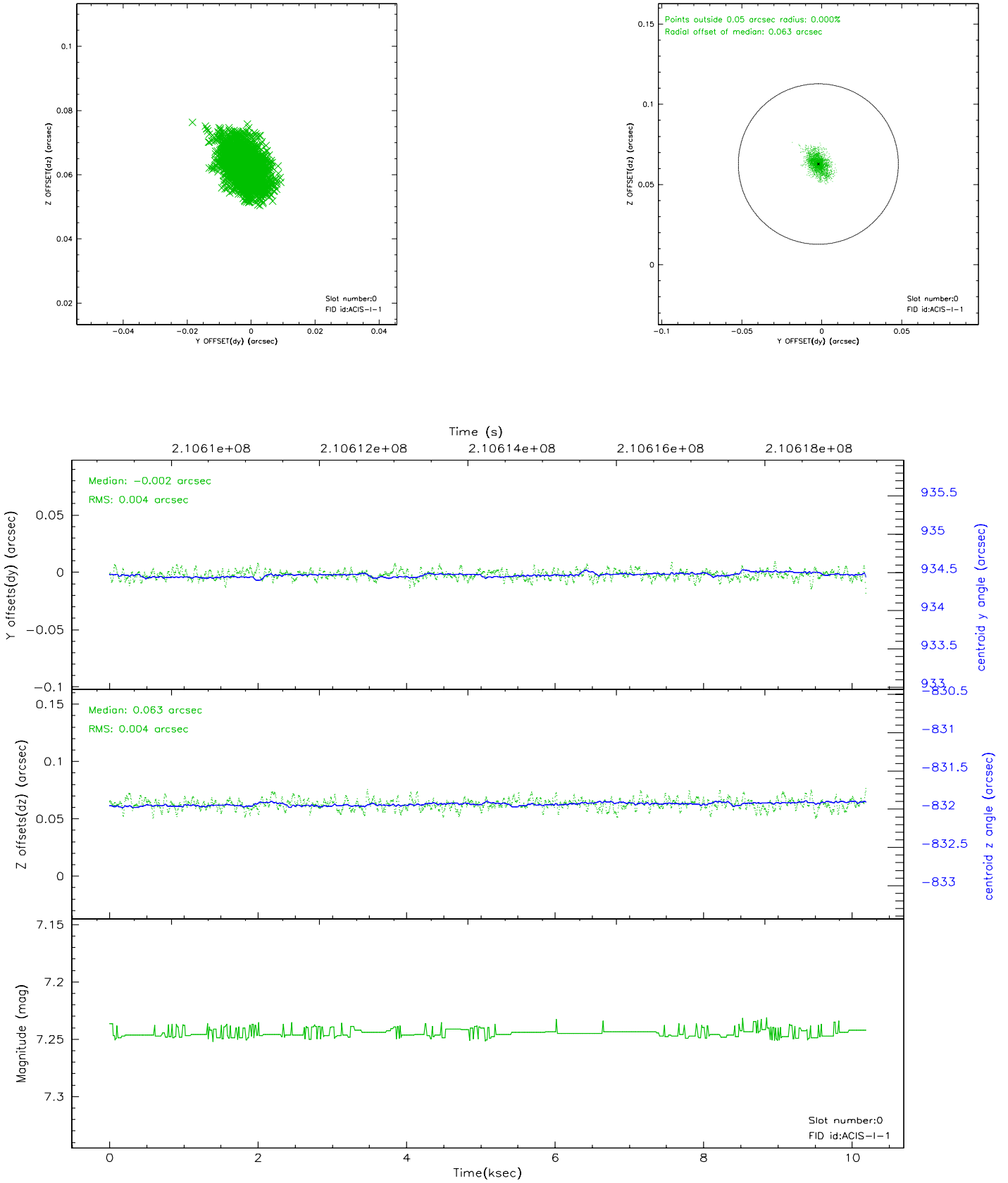


2.4.5 Slot 7

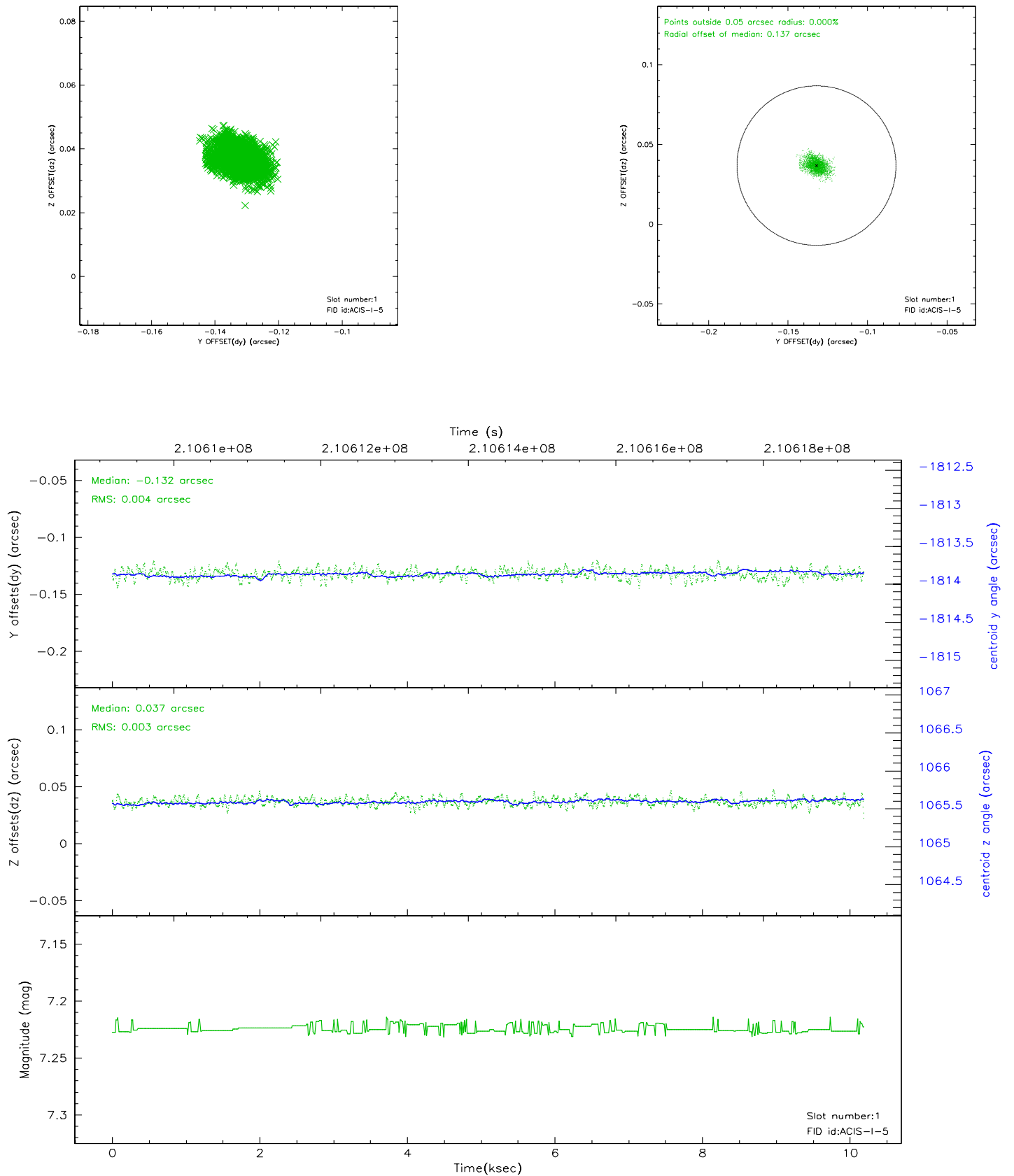


2.5 FID Slots

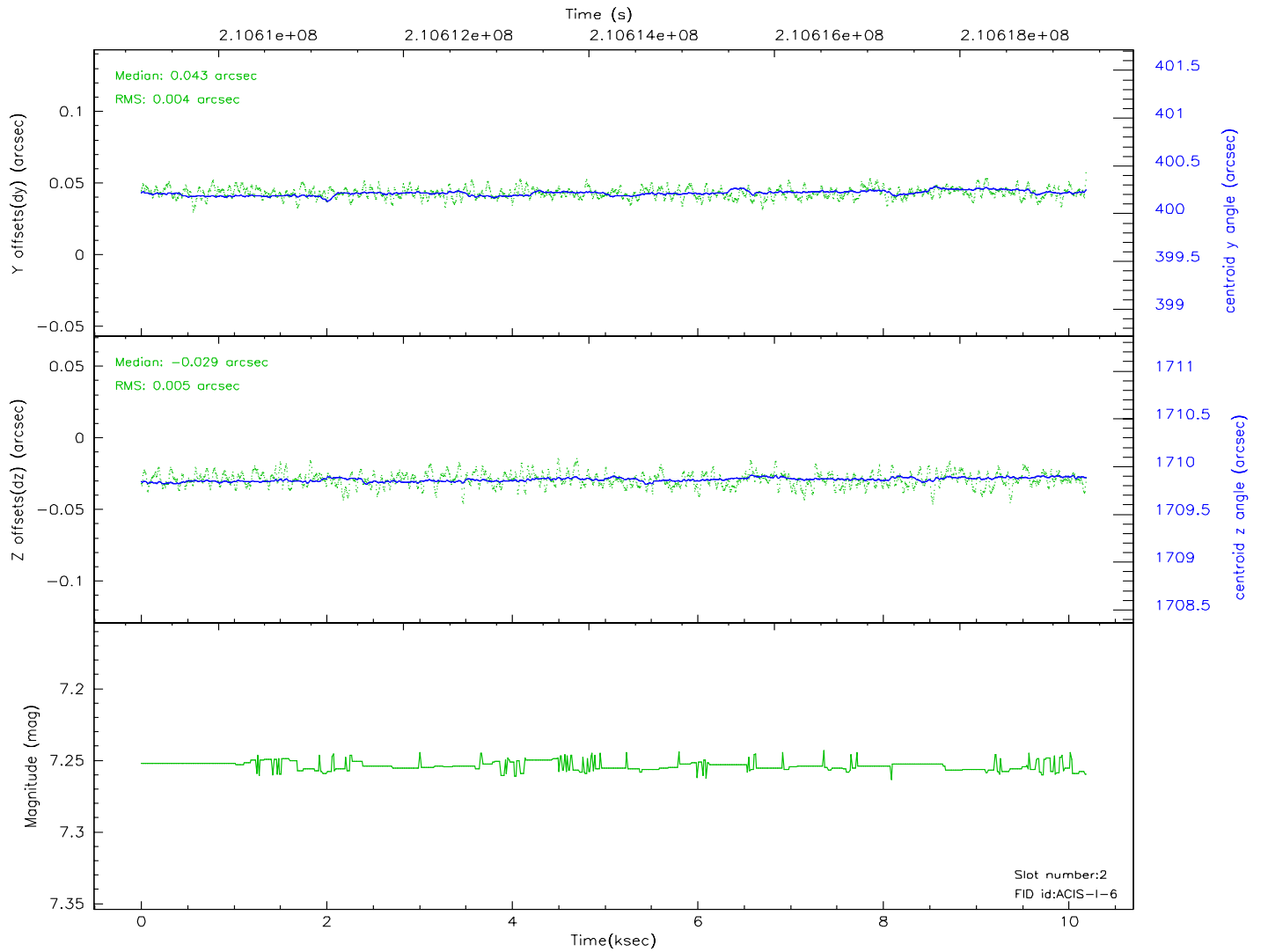
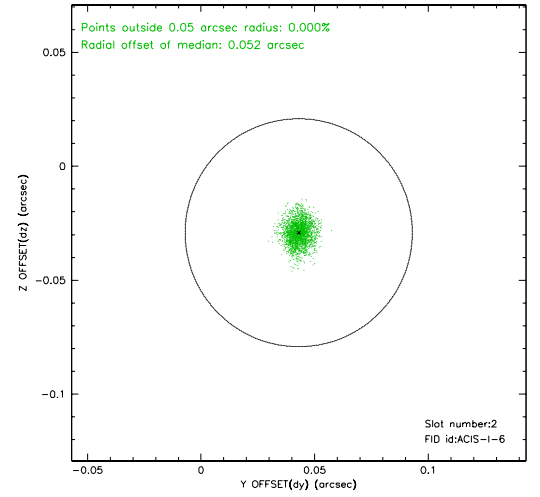
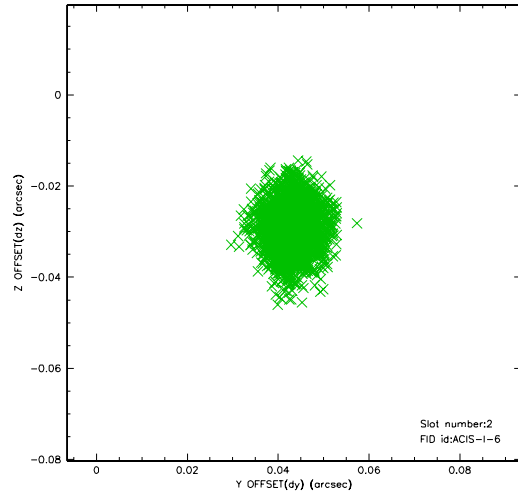
2.5.1 Slot 0



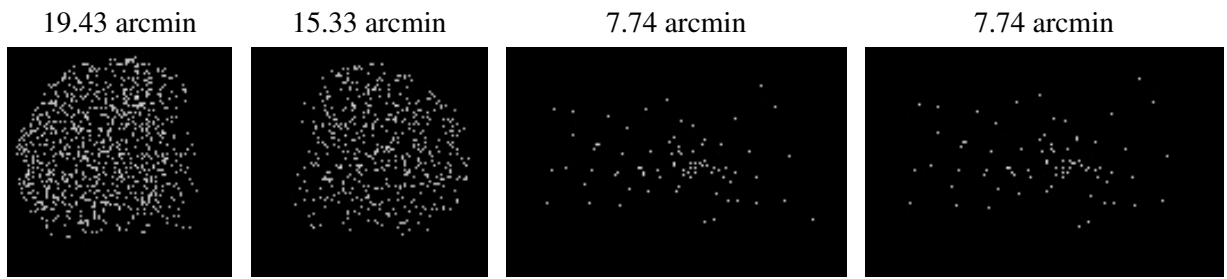
2.5.2 Slot 1



2.5.3 Slot 2



3 Point Sources



A Summary

A.1 Status

V&V Scientist	Beth Sundheim
V&V Date (YYYY-MM-DD)	2006.04.19
V&V Edition	1
V&V Disposition and Status	OK
V&V Charge Time	9.759

A.2 Comments