

V&V Reference Report

L2 ASCDS Version : 8.5.1.1

Observation 4873 - L2 Version 3
Chandra X-Ray Center

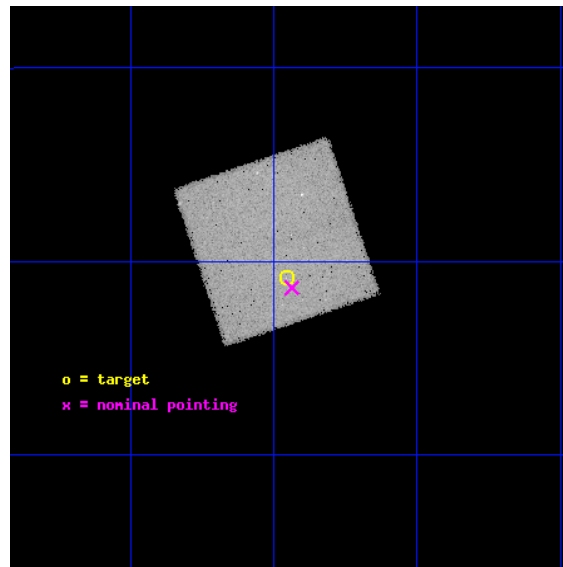
L2 Processing Date : Dec 21 2012

Contents

1	Front	2
2	OBI	3
2.1	OBI	3
2.1.1	Images	3
2.1.2	Bias	3
2.1.3	Parameters	4
2.1.4	Events	4
2.2	Compared Parameters	5
2.3	Aspect	6
2.4	Star Slots	9
2.4.1	Slot 3	9
2.4.2	Slot 4	10
2.4.3	Slot 5	11
2.4.4	Slot 6	12
2.4.5	Slot 7	13
2.5	FID Slots	14
2.5.1	Slot 0	14
2.5.2	Slot 1	15
2.5.3	Slot 2	16
A	Summary	17
A.1	Status	17
A.2	Comments	17

1 Front

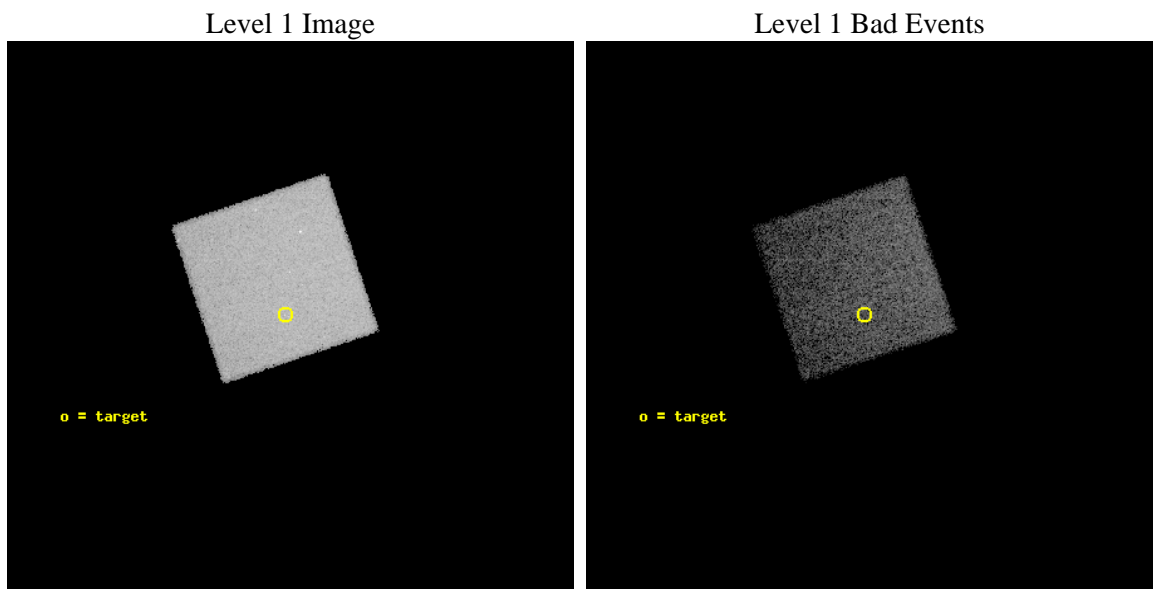
seq_num	700955	Sequence number
obs_id	4873	Observation id
title	UNCOVERING THE HIDDEN POPULATION OF BL LACS	Proposal title
observer	Dr Nicola Loaring	Principal investigator
object	2QZ J114327.3-005050	Source name
dtcycle	0	
cycle	P	events from which exps? Prim/Second/Both
ra_targ	175.86375	Observer's specified target RA [deg]
dec_targ	-0.847389	Observer's specified target Dec [deg]
ra_nom	175.85914094799	Nominal RA [deg]
dec_nom	-0.85589014340061	Nominal Dec [deg]
roll_nom	251.47059728344	Nominal Roll [deg]
revision	3	Processing version of data
ontime	14330.959009707	Sum of GTIs [s]
livetime	14137.557226844	Livetime [s]
ontime7	14330.959009707	Sum of GTIs [s]
l2events	102995	Number of level 2 events



2 OBI

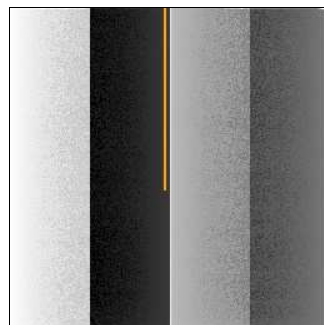
2.1 OBI

2.1.1 Images



2.1.2 Bias

Chip 7



2.1.3 Parameters

obi_num	1	Obi number	sched_exp_time	14161.250000	[s] Scheduled observation exposure time
ascdsver	8.5.1.1	Processing system revision	ontime	14330.959009707	Sum of GTIs [s]
caldsver	4.5.5	 	ontime7	14330.959009707	Sum of GTIs [s]
date	2012-12-22T01:56:13	Date and time of file creation	l1events	204378	Number of level 1 events
revision	3	Processing version of data			

2.1.4 Events

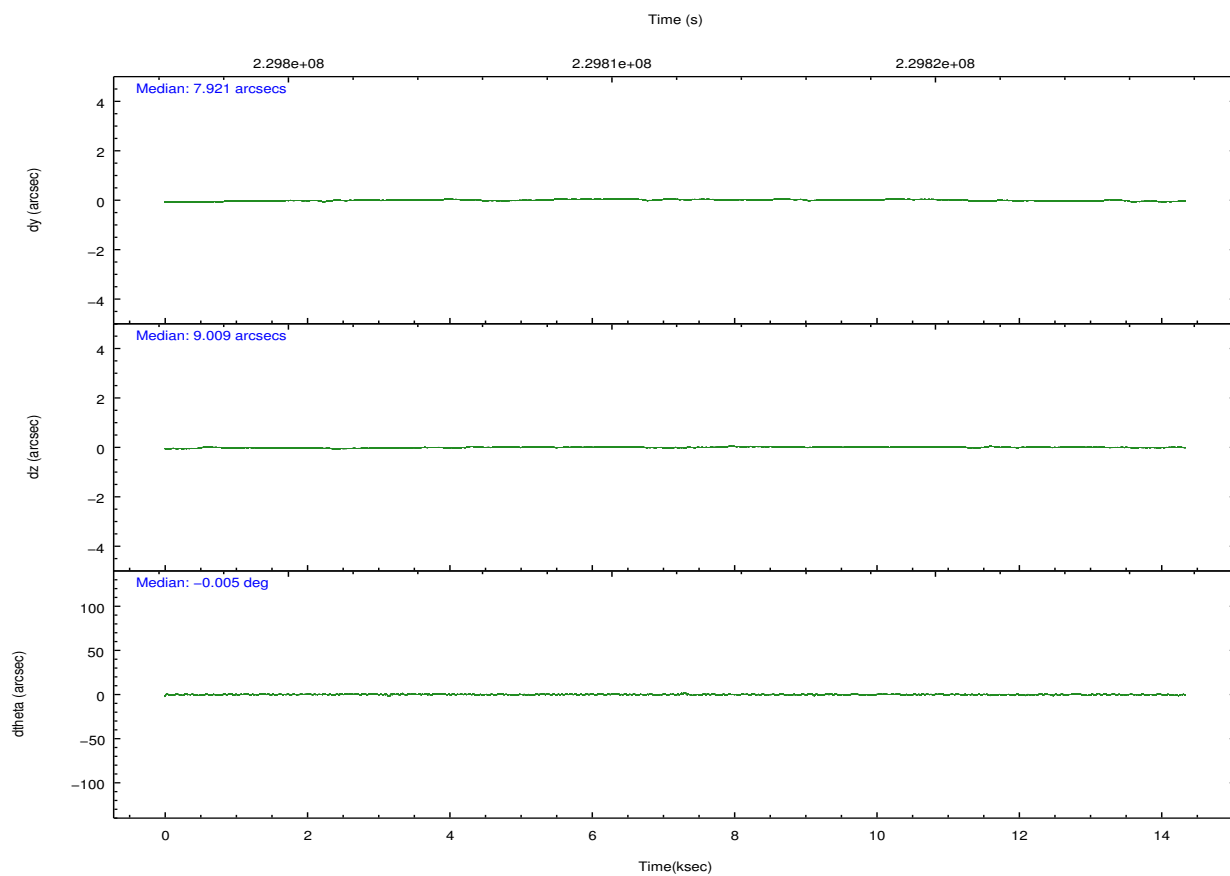
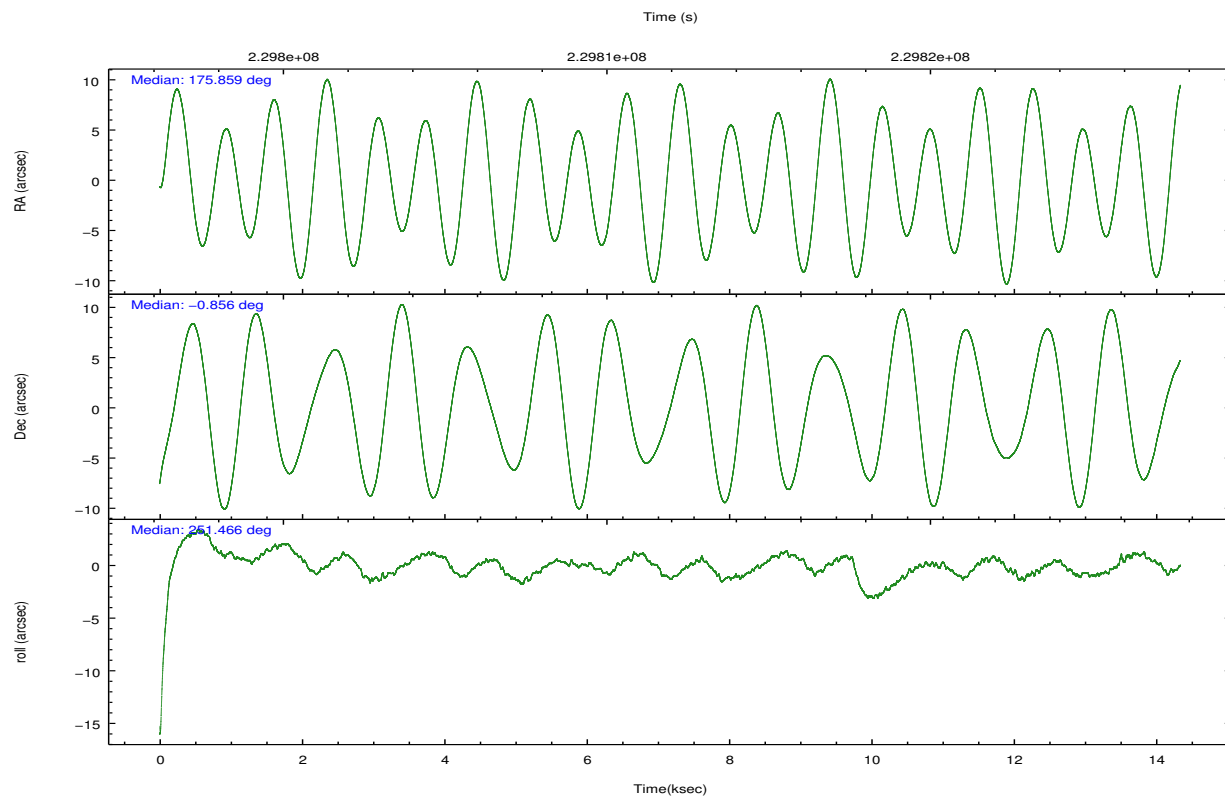
	ccd 7
level 1 events	204378
rejected events	99429
rejected %	48%

	ccd 7
grade 0 events	10902
	5%
grade 1 events	151
	0%
grade 2 events	19885
	9%
grade 3 events	8547
	4%
grade 4 events	8391
	4%
grade 5 events	15064
	7%
grade 6 events	62755
	30%
grade 7 events	78683
	38%

2.2 Compared Parameters

Parameter	Planned	Actual	Parameter	Planned	Actual
Instrument	ACIS	ACIS	Obspar format version number	7	7
Detector	ACIS-7	ACIS-7	Obspar file type	PREDICTED	ACTUAL
Grating	NONE	NONE	Obspar update status	NONE	UPDATED
Data mode	VFAINT	VFAINT	Number of optional ACIS chips dropped	0	0
Observation mode	POINTING	POINTING	On-chip summing requested	N	N
[deg] Pointing RA	175.853335	175.8591409479921	Subarray requested	NONE	NONE
[deg] Pointing Dec	-0.829262	-0.8558901434006101	Alternating exposures requested	N	N
[deg] Pointing Roll	251.313894	251.4705972834425	[s] Primary exposure time	0.000000	3
[mm] SIM focus pos	-0.684267	-0.6828225247311905			
[mm] SIM defocus	0	0.001444936568705701			
[mm] SIM translation stage pos	-190.132523	-190.1425803651734			
[mm] SIM translation stage offset	0	0.01005778216563158			
[s] Observation start time (MET)	229803981.184000	229802609.42634			
Observation start date	2005-04-13T18:25:17	2005-04-13T18:03:29			
[s] Observation end time (MET)	229818142.184000	229818366.75205			
Observation end date	2005-04-13T22:21:18	2005-04-13T22:26:06			
Read mode	TIMED	TIMED			

2.3 Aspect

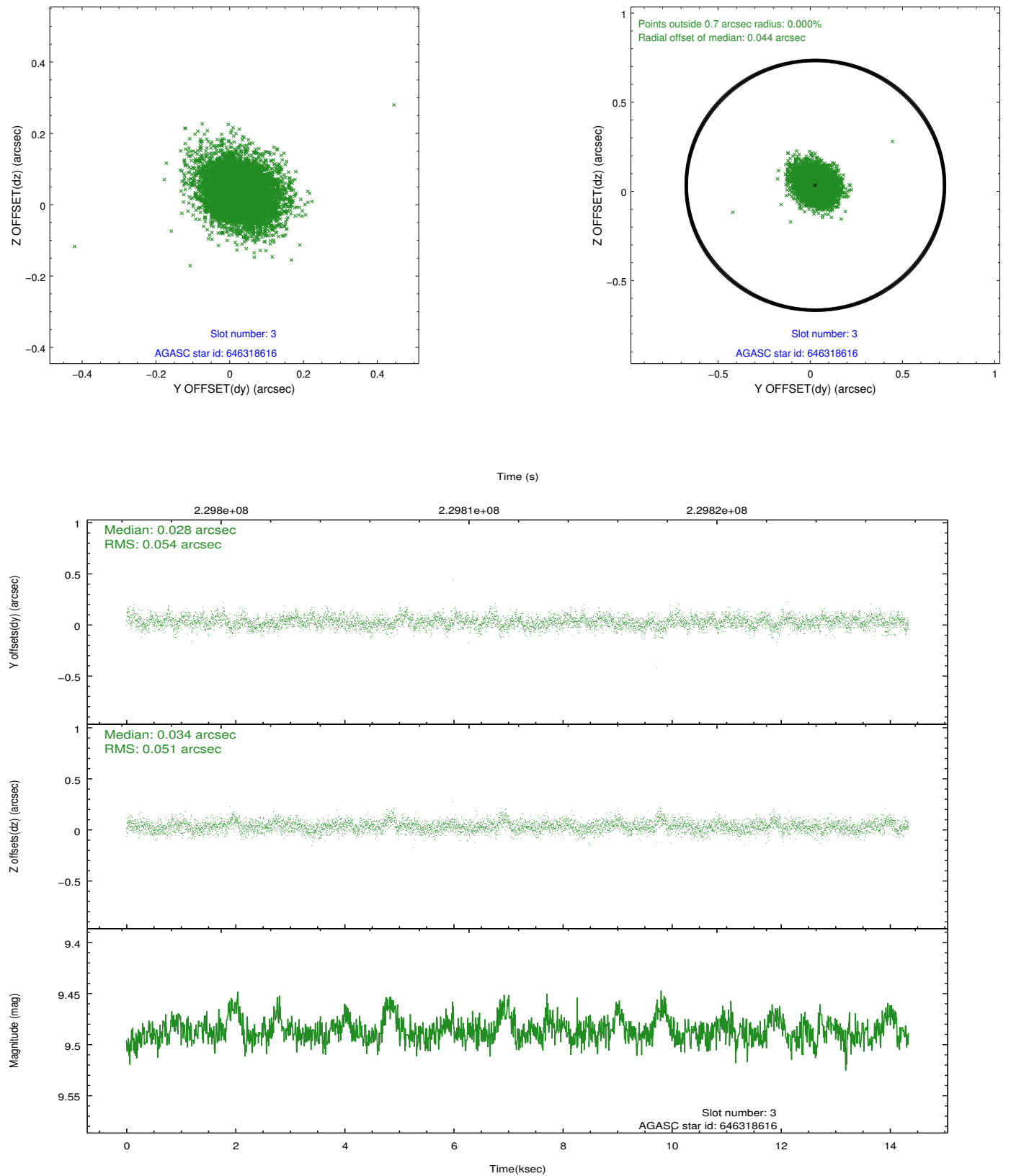


Slot Statistics

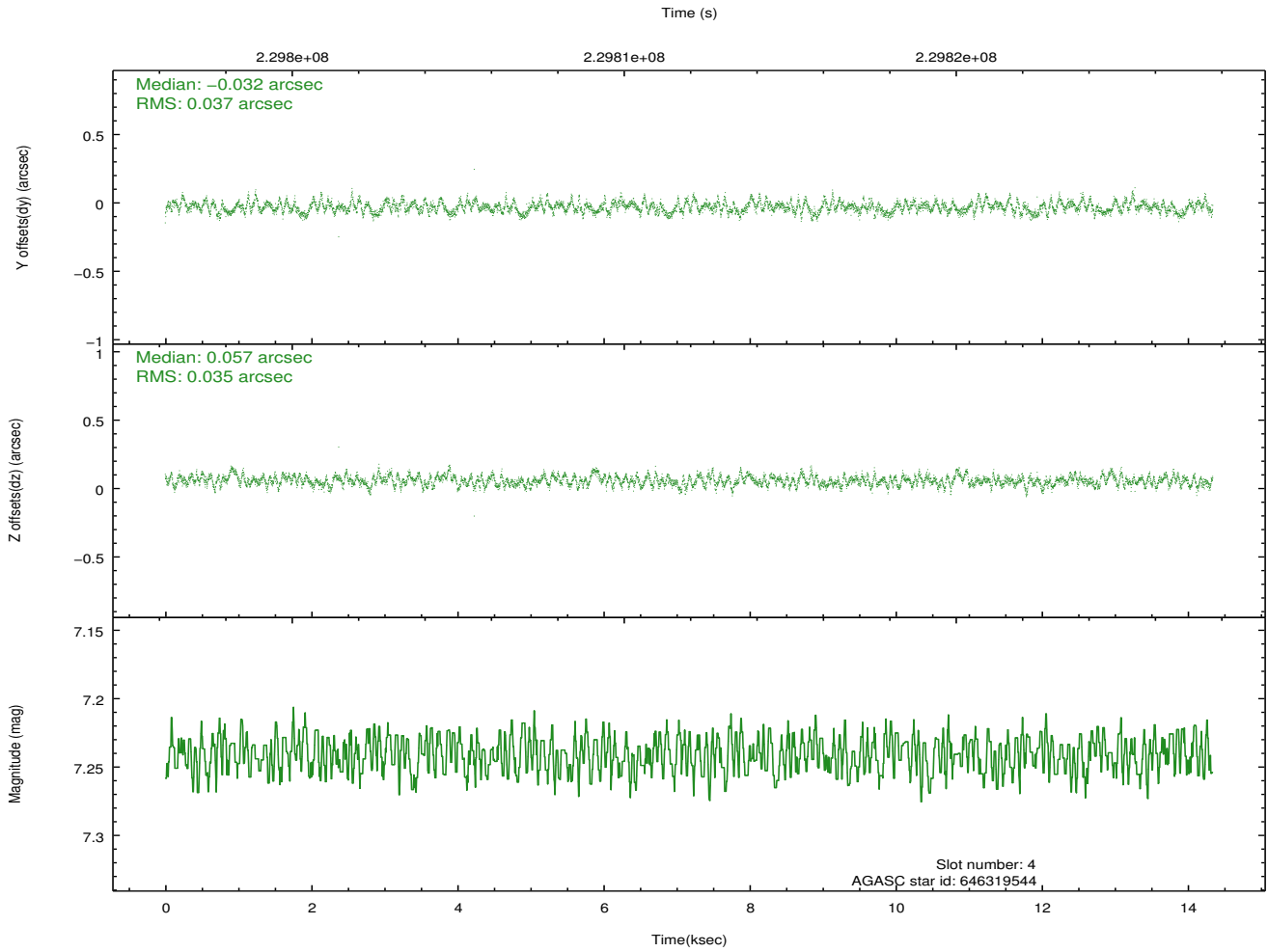
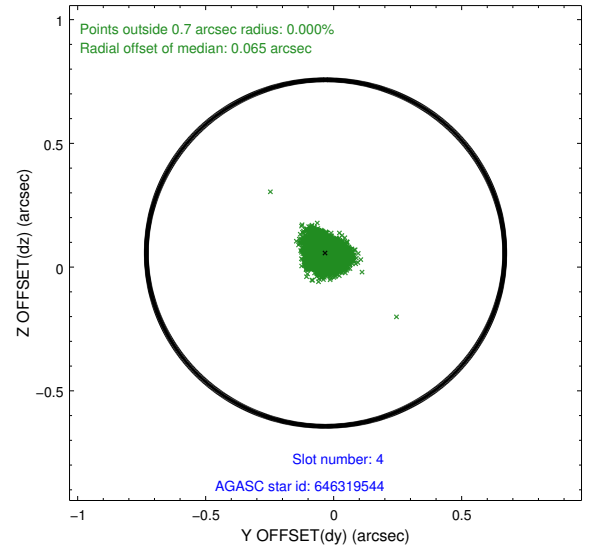
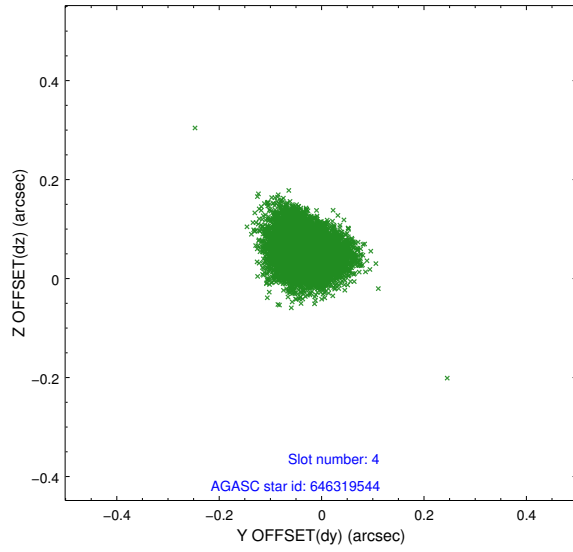
slot	status	id	mag	n_pts	med_dy	med_dz	dr1	dr2	ra	dec	mean_y	mean_z
0	FID	ACIS-S-2	7.10	3492	-0.059	-0.031	0.006	0.011	0.000000	0.000000	-760.74	-1730.21
1	FID	ACIS-S-4	7.21	3495	0.061	0.031	0.006	0.010	0.000000	0.000000	2152.50	178.03
2	FID	ACIS-S-6	7.35	3495	-0.030	0.007	0.007	0.011	0.000000	0.000000	401.67	815.75
3	GUIDE	646318616	9.49	6990	0.028	0.034	0.077	0.130	176.109395	-0.378794	-1831.35	353.54
4	GUIDE	646319544	7.24	6993	-0.032	0.057	0.055	0.087	176.255766	-0.517844	-1525.76	1013.24
5	GUIDE	646321952	6.89	6994	-0.032	0.113	0.063	0.103	175.232908	-0.674327	187.53	-2293.87
6	GUIDE	646322304	9.52	6985	0.149	-0.290	0.094	0.158	175.858610	-0.945056	389.15	151.00
7	GUIDE	646323360	7.20	6929	-0.113	0.087	0.052	0.082	176.150253	-1.384836	1552.37	1653.35

2.4 Star Slots

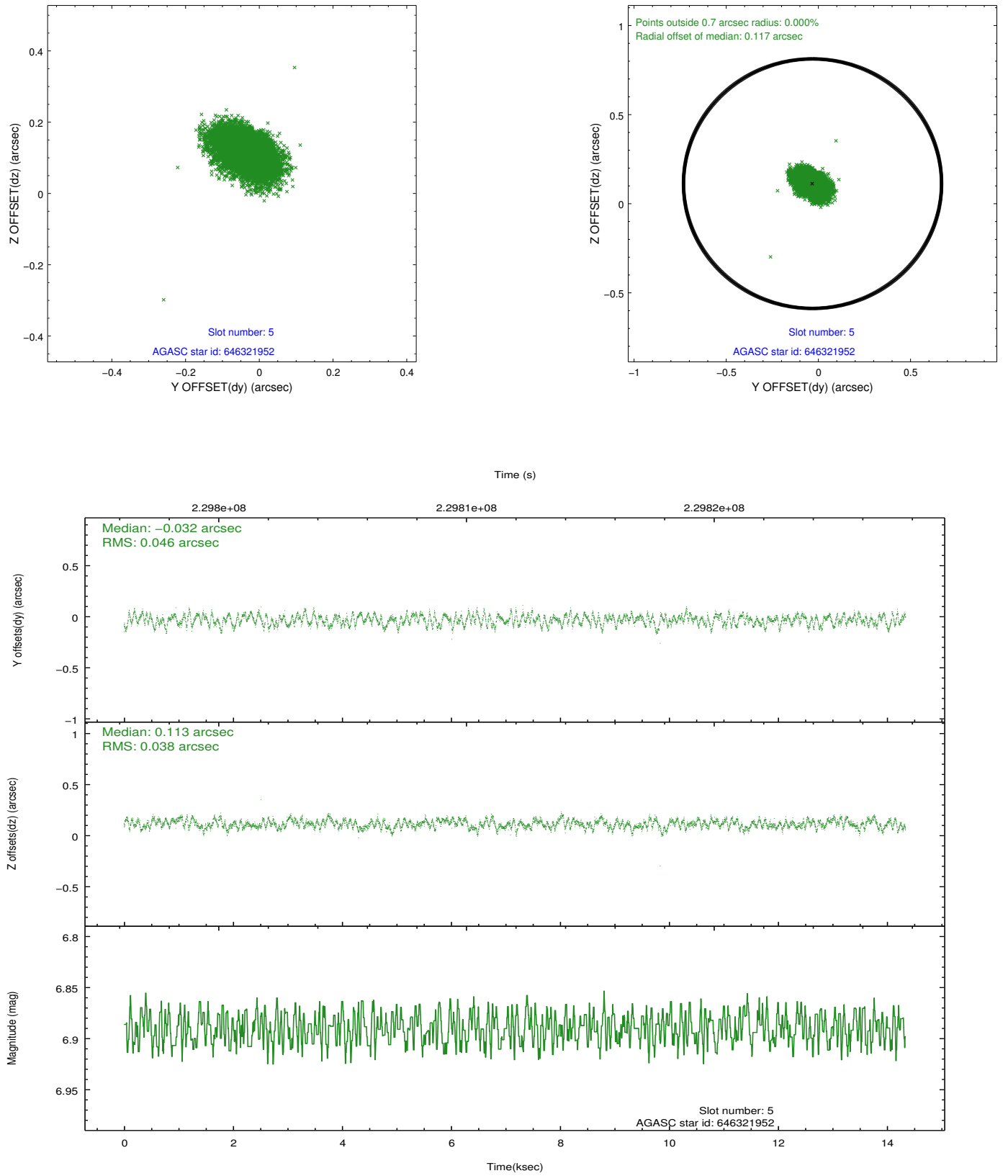
2.4.1 Slot 3



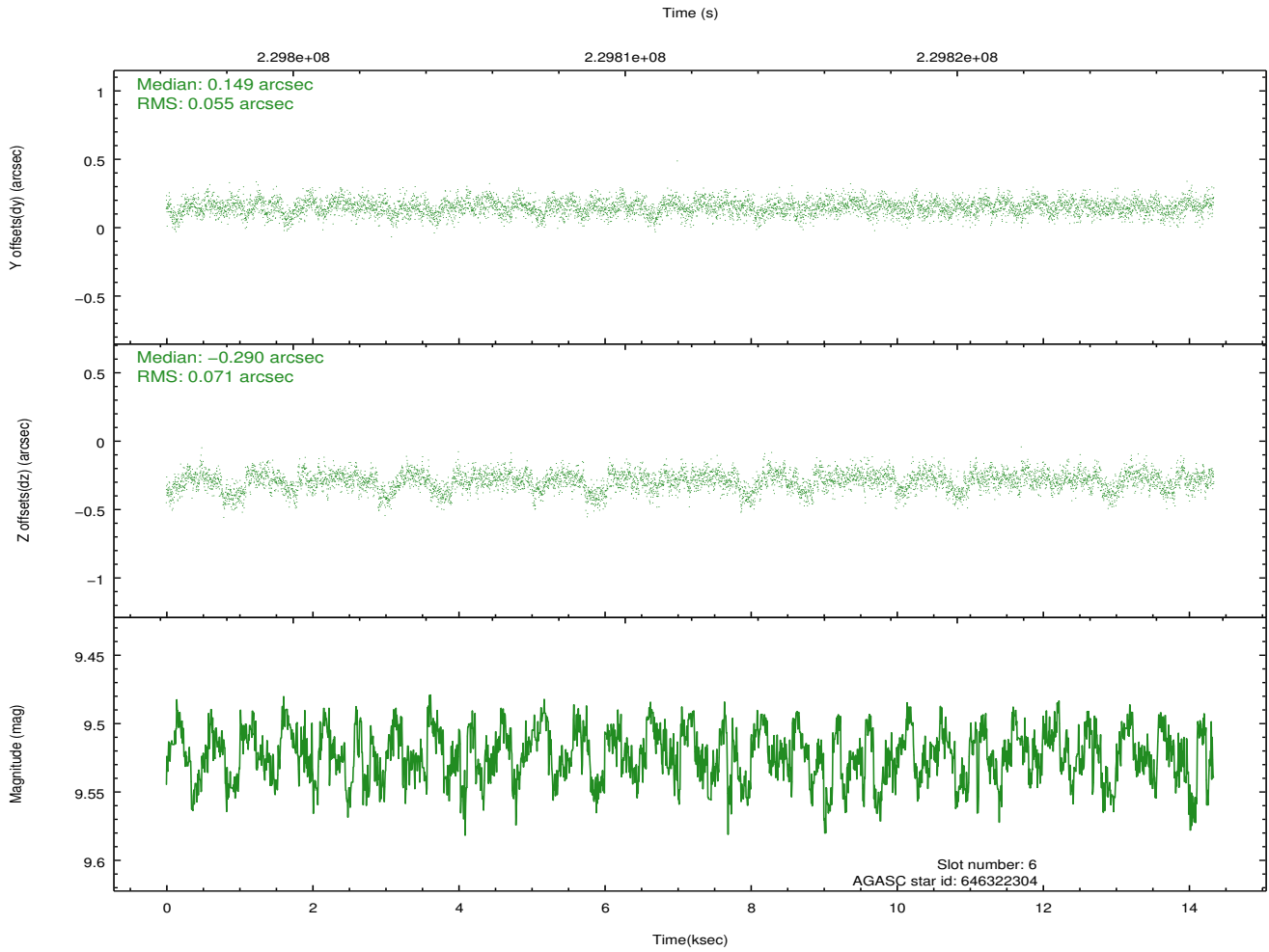
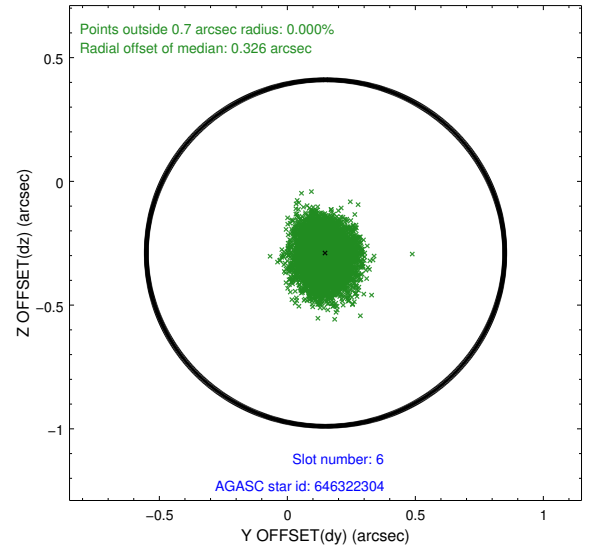
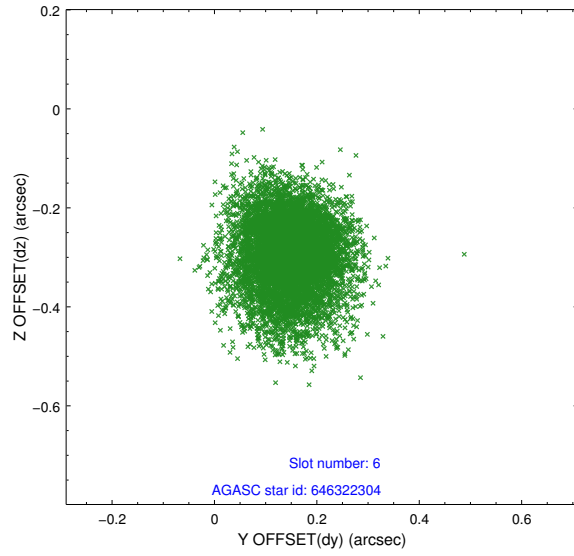
2.4.2 Slot 4



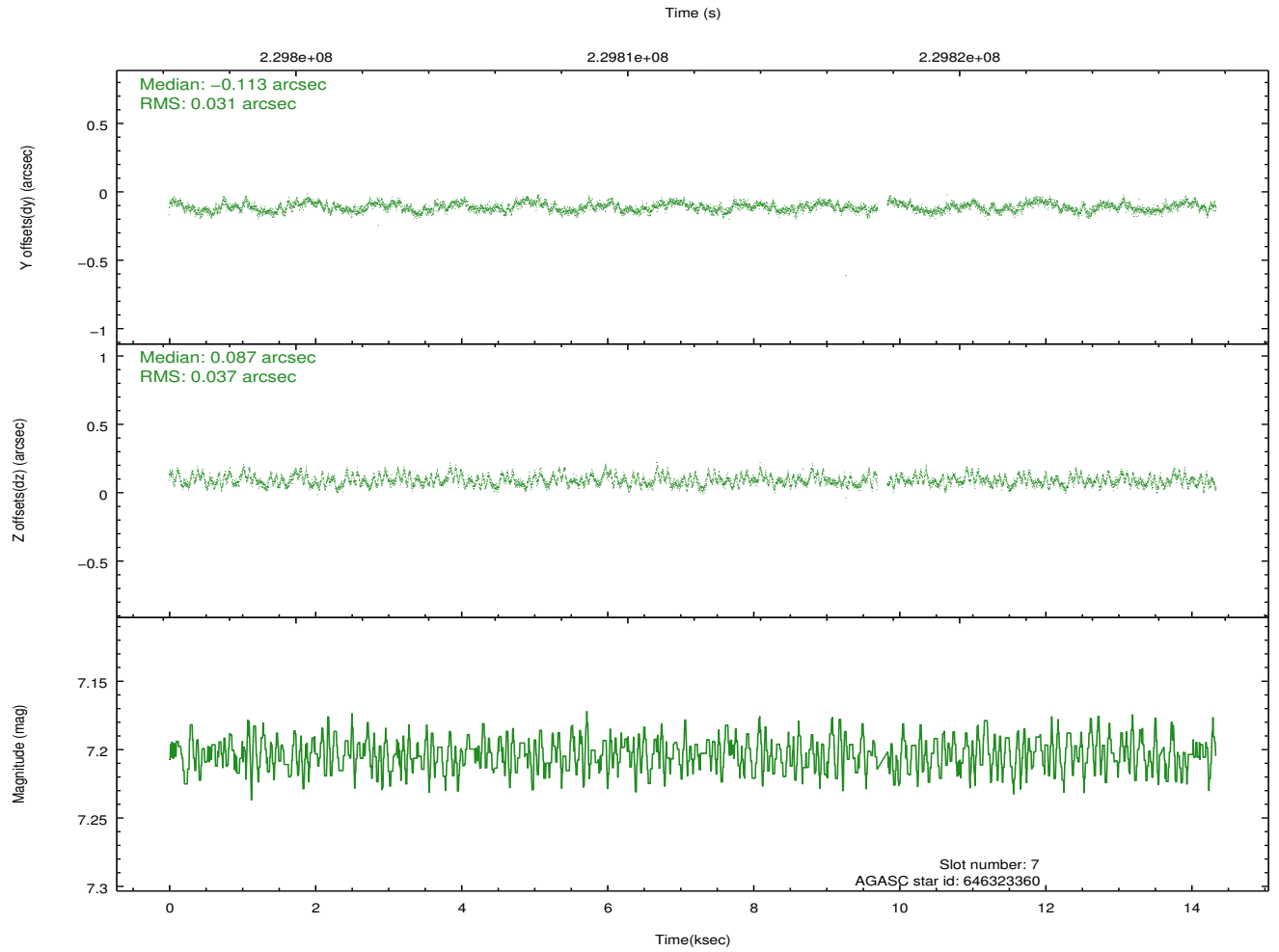
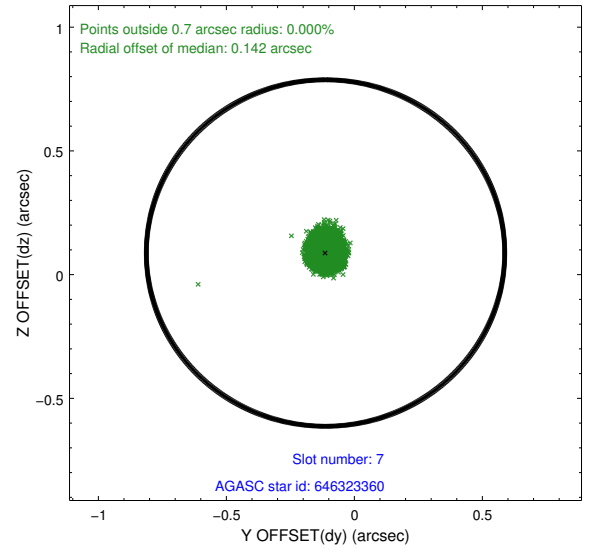
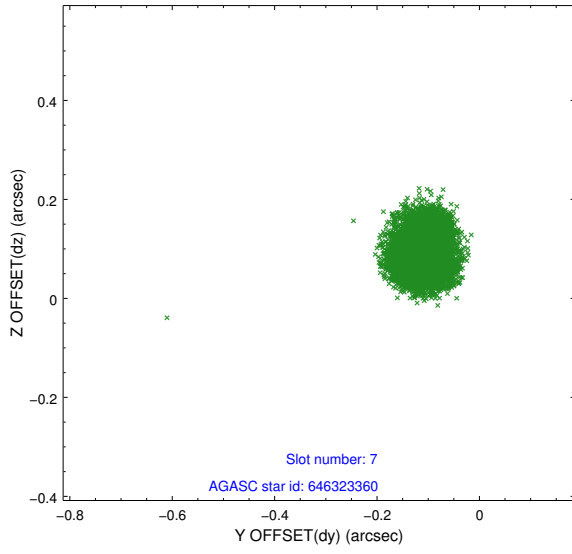
2.4.3 Slot 5



2.4.4 Slot 6

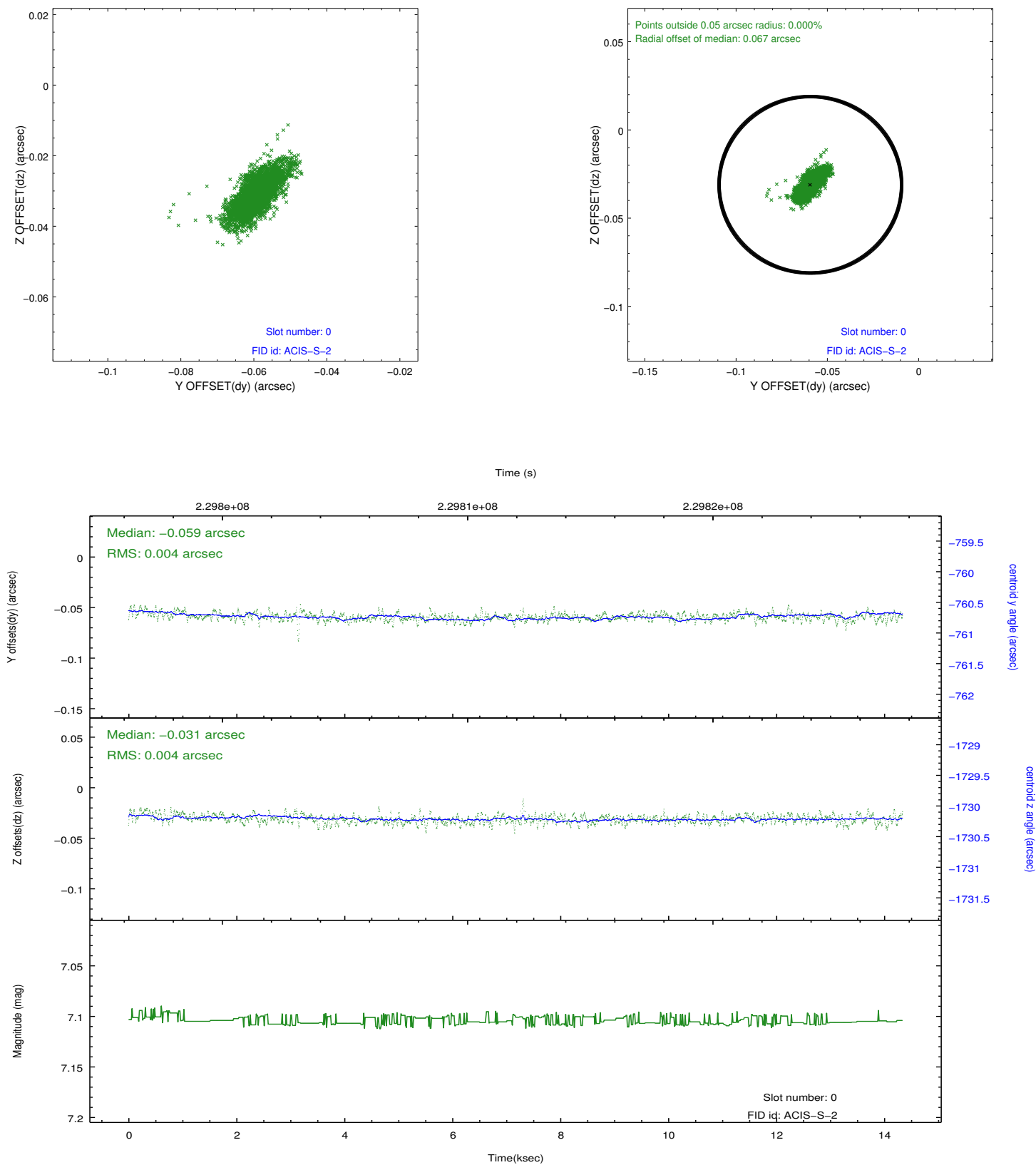


2.4.5 Slot 7

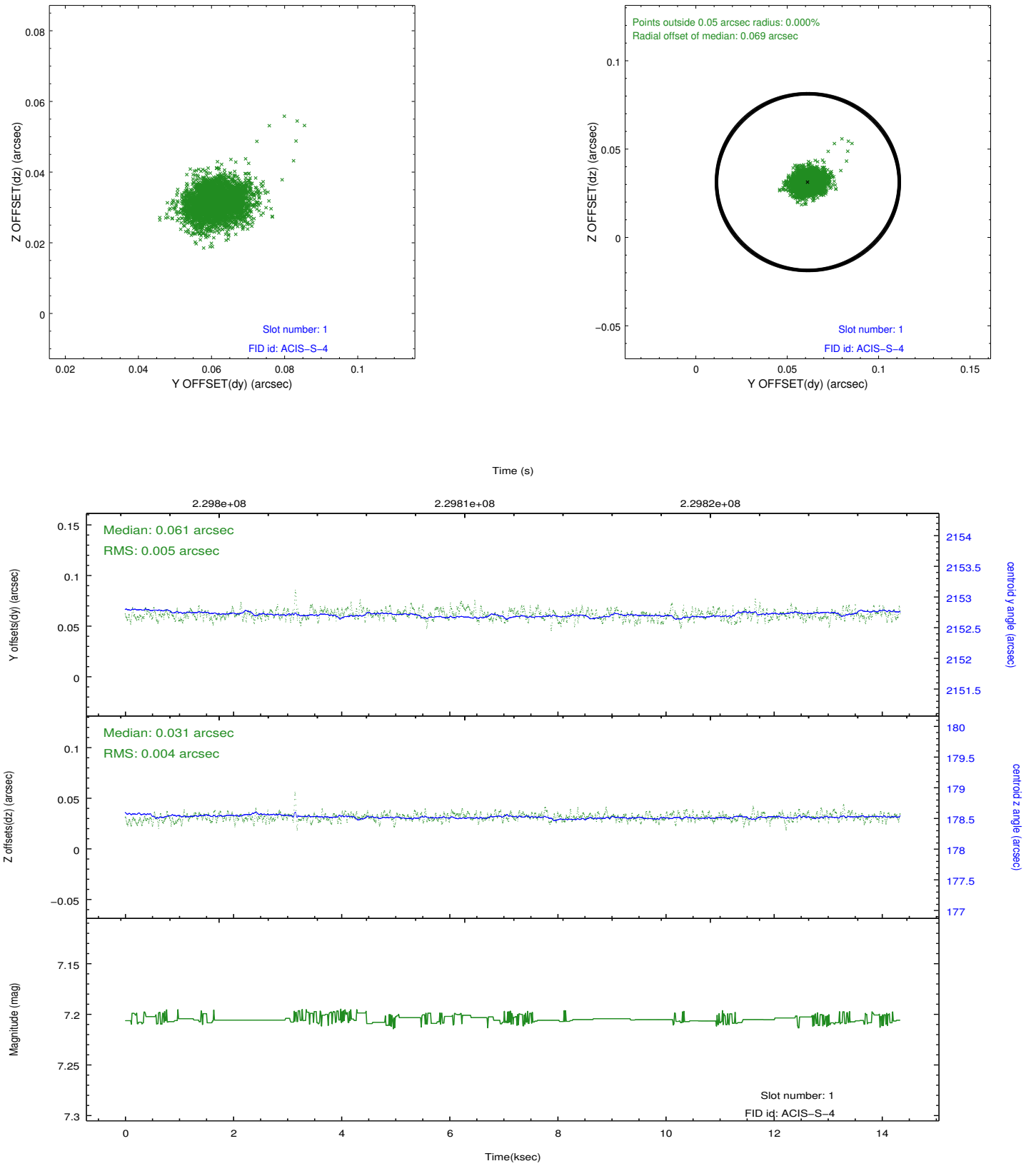


2.5 FID Slots

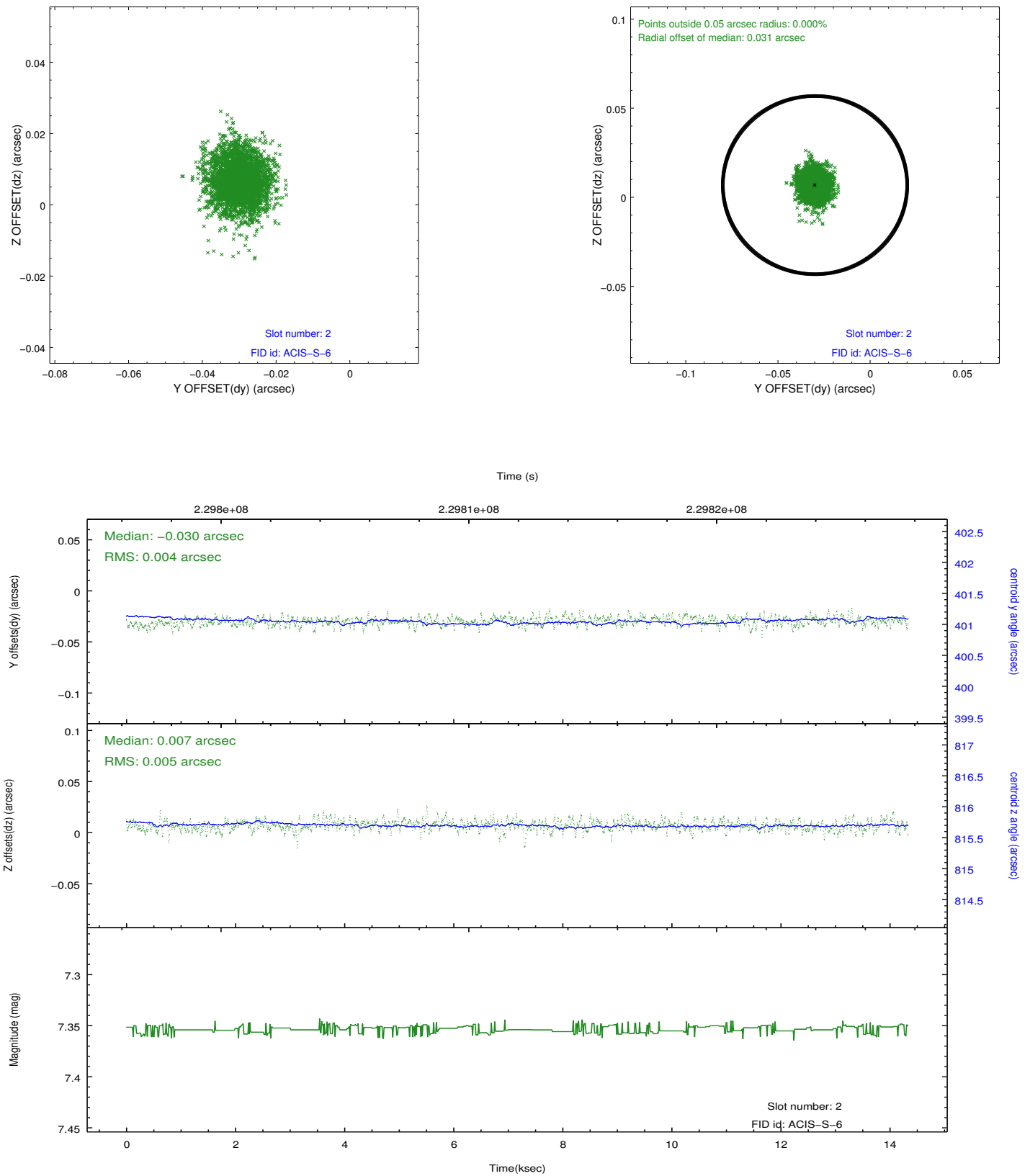
2.5.1 Slot 0



2.5.2 Slot 1



2.5.3 Slot 2



A Summary

A.1 Status

V&V Scientist	Jen Lauer
V&V Date (YYYY-MM-DD)	2013.01.15
V&V Edition	1
V&V Disposition and Status	OK
V&V Charge Time	14.33095

A.2 Comments