

V&V Reference Report

L2 ASCDS Version : 7.6.7.2

Observation 4865 - L2 Version 001
Chandra X-Ray Center

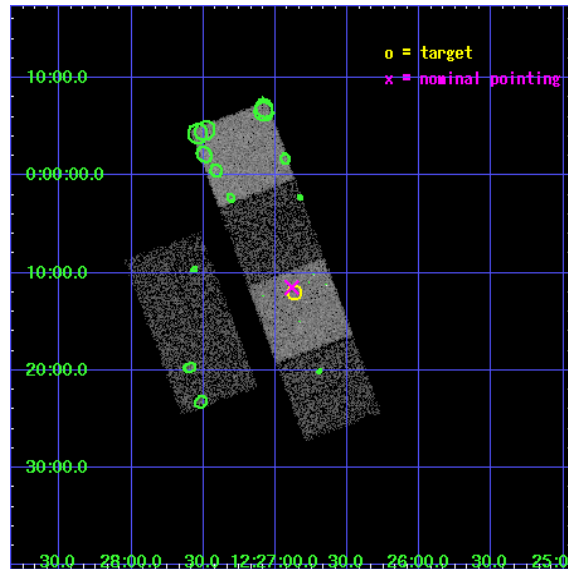
L2 Processing Date : Jun 2 2006

Contents

1	Front	2
2	OBI	3
2.1	OBI	3
2.1.1	Images	3
2.1.2	Bias	3
2.1.3	Parameters	4
2.1.4	Events	4
2.2	Compared Parameters	5
2.3	Aspect	6
2.4	Star Slots	9
2.4.1	Slot 3	9
2.4.2	Slot 4	10
2.4.3	Slot 5	11
2.4.4	Slot 6	12
2.4.5	Slot 7	13
2.5	FID Slots	14
2.5.1	Slot 0	14
2.5.2	Slot 1	15
2.5.3	Slot 2	16
3	Point Sources	17
A	Summary	18
A.1	Status	18
A.2	Comments	18

1 Front

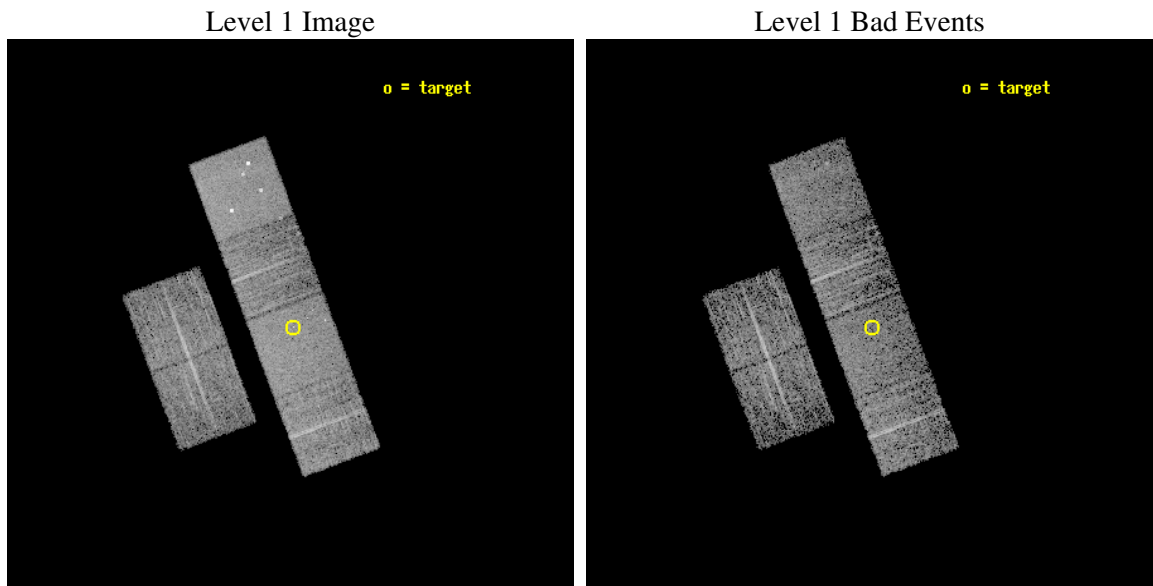
seq_num	700947
obs_id	4865
title	X-ray Properties of Dust Reddened Quasars from the Sloan Digital Sky Survey
observer	Gordon Richards
object	SDSS J122652.01-001159.6
dtcycle	0
cycle	P
ra_targ	186.716667
dec_targ	-0.199889
ra_nom	186.72149599806
dec_nom	-0.19154174334931
roll_nom	69.467885070004
revision	2
ontime	4959.9999815226
livetime	4897.1934752031
ontime2	4959.9999815226
ontime3	4959.9999815226
ontime5	4959.9999815226
ontime6	4959.9999815226
ontime7	4959.9999815226
ontime8	4959.9999815226
l2events	50007



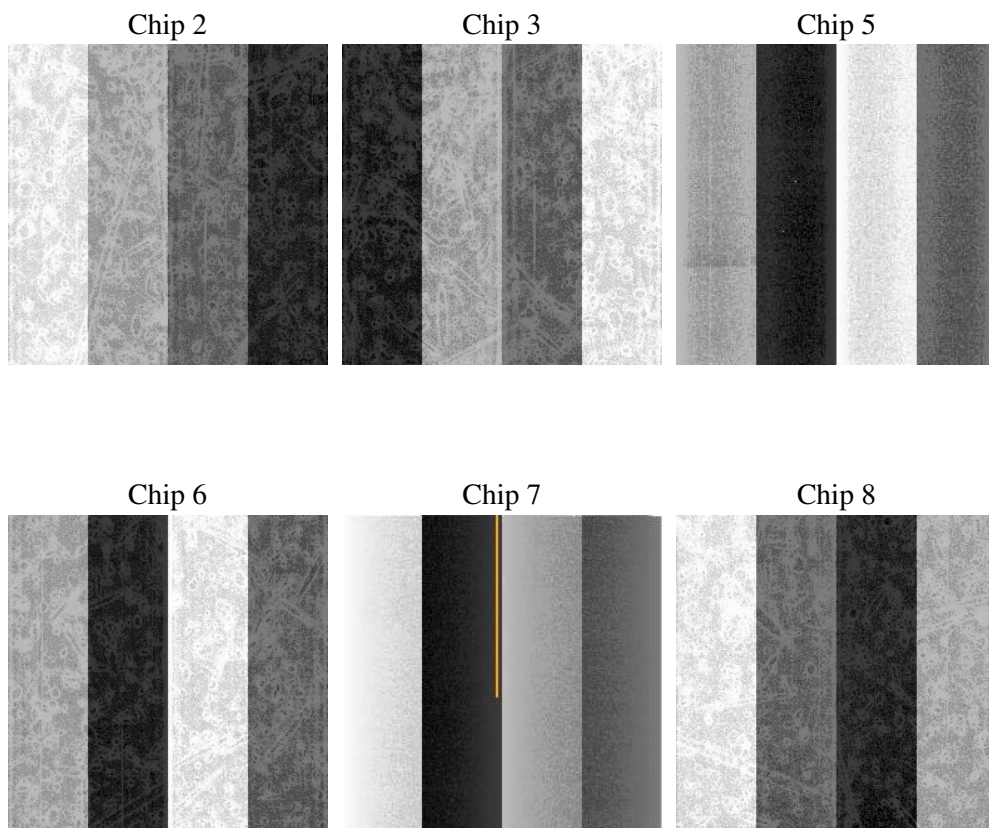
2 OBI

2.1 OBI

2.1.1 Images



2.1.2 Bias



2.1.3 Parameters

obi_num	0
ascdsver	7.6.7.2
caldsver	3.2.2
date	2006-06-02T10:09:44
revision	2

sched_exp_time	5000.000000
ontime	4965.2274873257
ontime2	4965.2274674177
ontime3	4965.2274674177
ontime5	4965.2274674177
ontime6	4965.2274674177
ontime7	4965.2274873257
ontime8	4965.2274674177
l1events	227496

2.1.4 Events

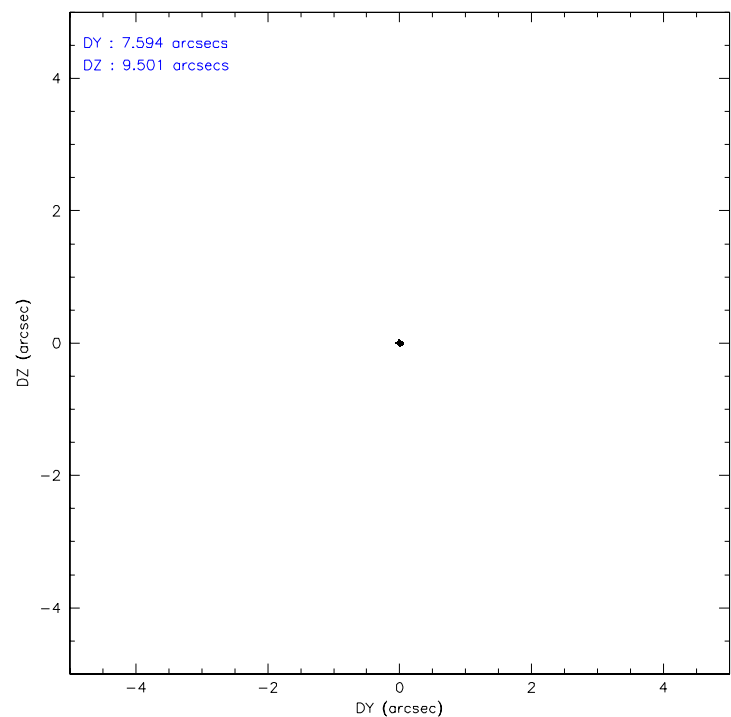
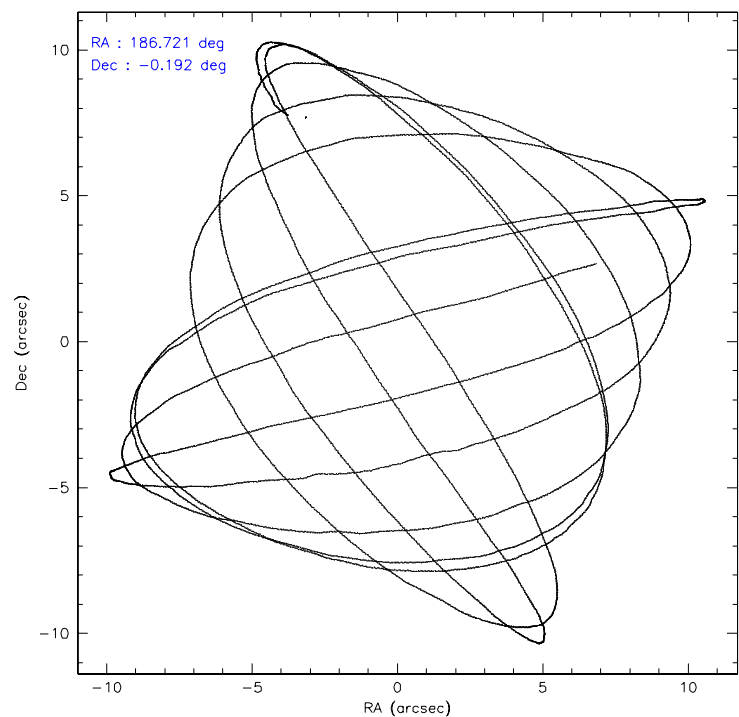
	ccd 2	ccd 3	ccd 5	ccd 6	ccd 7	ccd 8
level 1 events	31903	29322	49239	32801	44214	40017
rejected events	28062	25394	26491	28925	27297	31287
rejected %	87%	86%	53%	88%	61%	78%

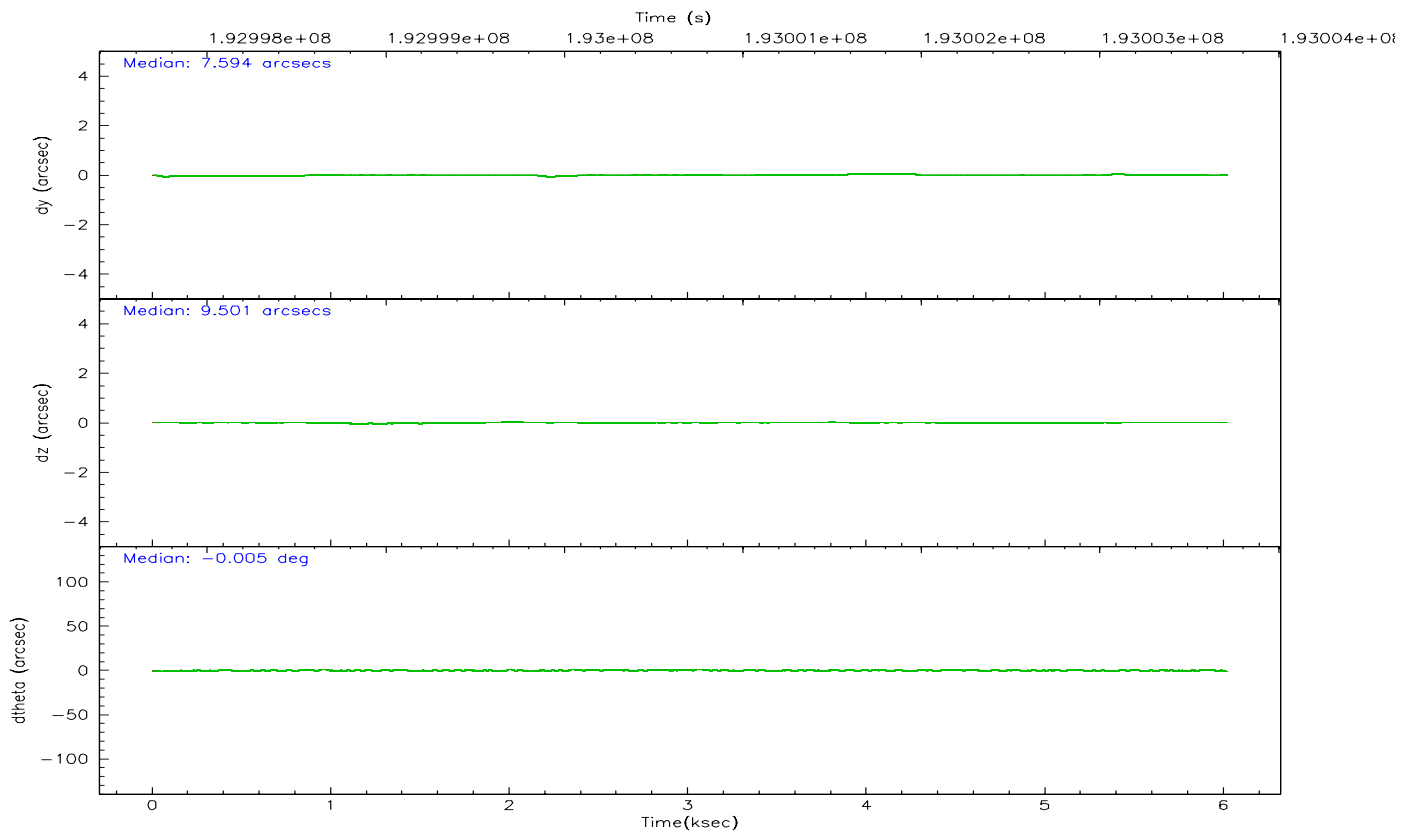
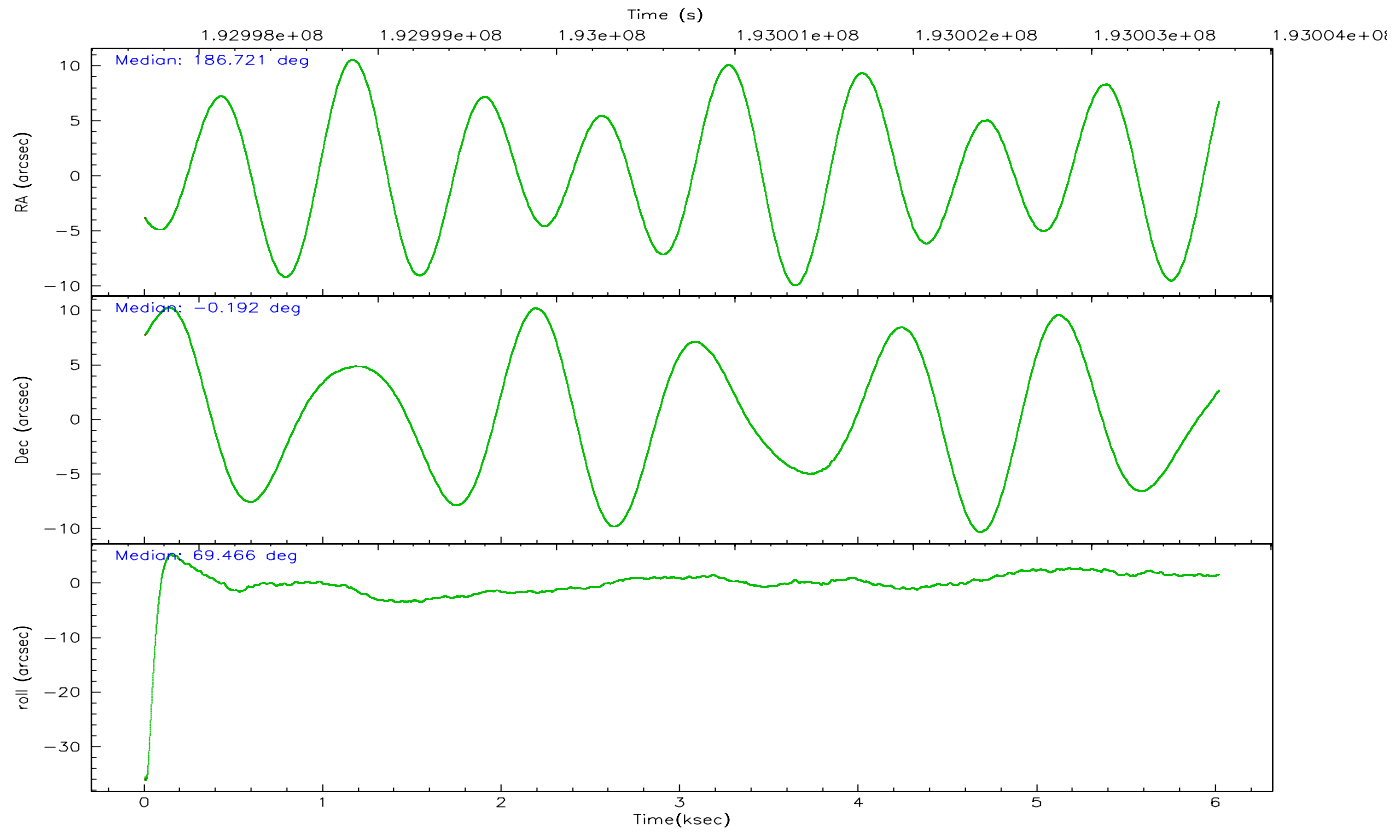
	ccd 2	ccd 3	ccd 5	ccd 6	ccd 7	ccd 8
grade 0 events	1717	1794	3337	1486	1232	2844
	5%	6%	6%	4%	2%	7%
grade 1 events	17	12	143	17	18	28
	0%	0%	0%	0%	0%	0%
grade 2 events	785	732	6723	840	4285	1828
	2%	2%	13%	2%	9%	4%
grade 3 events	345	387	495	366	913	973
	1%	1%	1%	1%	2%	2%
grade 4 events	391	370	447	358	870	875
	1%	1%	0%	1%	1%	2%
grade 5 events	1247	1409	2227	1497	2974	1875
	3%	4%	4%	4%	6%	4%
grade 6 events	605	648	11766	826	9633	2213
	1%	2%	23%	2%	21%	5%
grade 7 events	26796	23970	24101	27411	24289	29381
	83%	81%	48%	83%	54%	73%

2.2 Compared Parameters

Parameter	Planned	Actual	Parameter	Planned	Actual
Instrument	ACIS	ACIS	Obspar format version number	6	6
Detector	ACIS-235678	ACIS-235678	Obspar file type	PREDICTED	ACTUAL
Grating	NONE	NONE	Obspar update status	NONE	UPDATED
Data mode	FAINT	FAINT	On-chip summing requested	N	N
Observation mode	POINTING	POINTING	Subarray requested	NONE	NONE
Pointing RA	186.726435	186.7214959980588	Alternating exposures requested	N	N
Pointing Dec	-0.218364	-0.1915417433493071	Primary exposure time	0.000000	3.2
Pointing Roll	69.311356	69.4678850700036			
SIM focus pos (mm)	-0.684267	-0.6828225247311905			
SIM defocus (mm)	0	0.001444936568705701			
SIM translation stage pos (mm)	-190.132523	-190.1400660498719			
SIM translation stage offset (mm)	0	0.00754346686406393			
Observation start time	192998718.184000	192997342.38415			
Observation start date	2004-02-12T18:44:14	2004-02-12T18:22:22			
Observation end time	193003718.184000	193004604.50947			
Observation end date	2004-02-12T20:07:34	2004-02-12T20:23:24			
Read mode	TIMED	TIMED			

2.3 Aspect



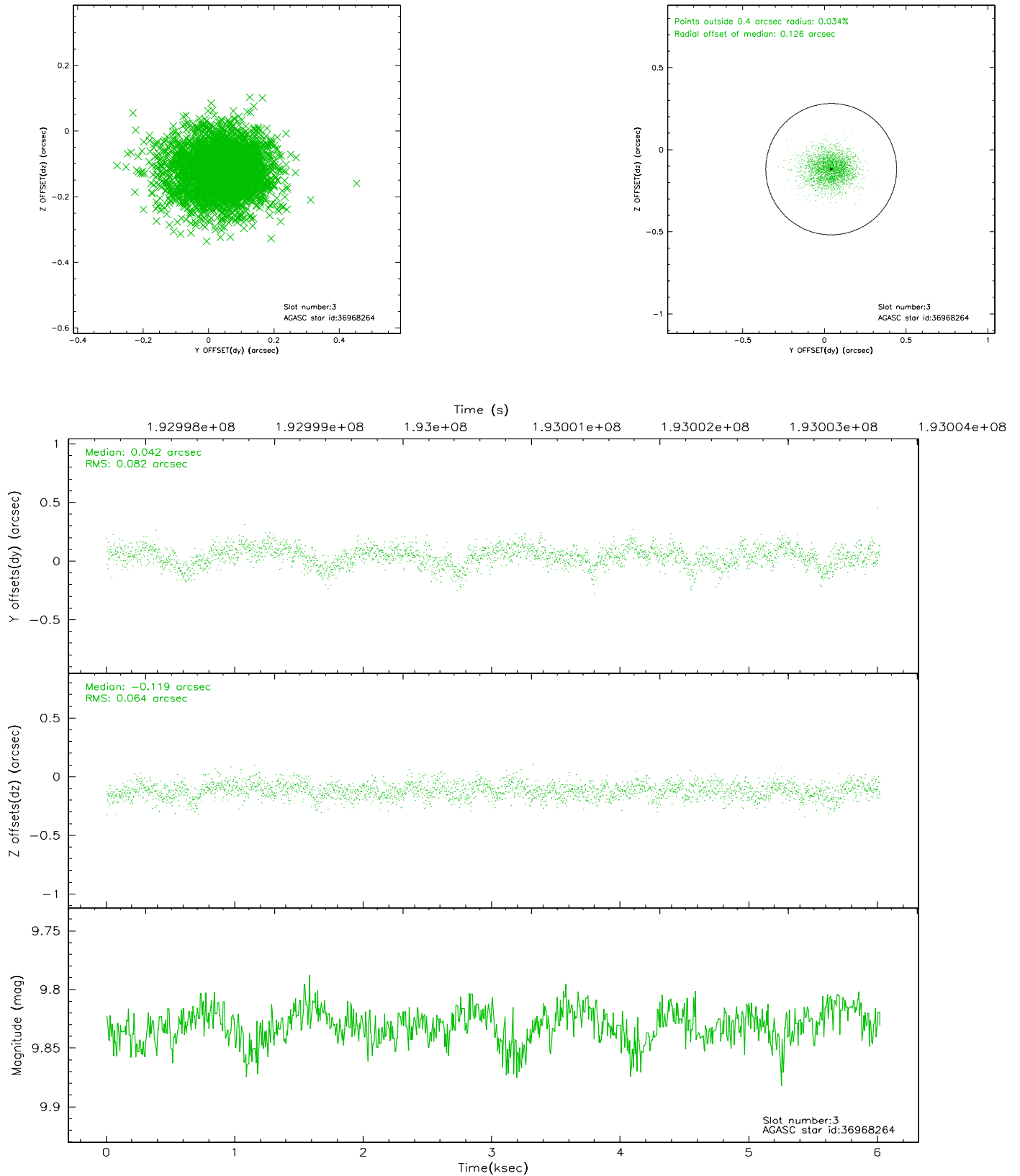


Slot Statistics

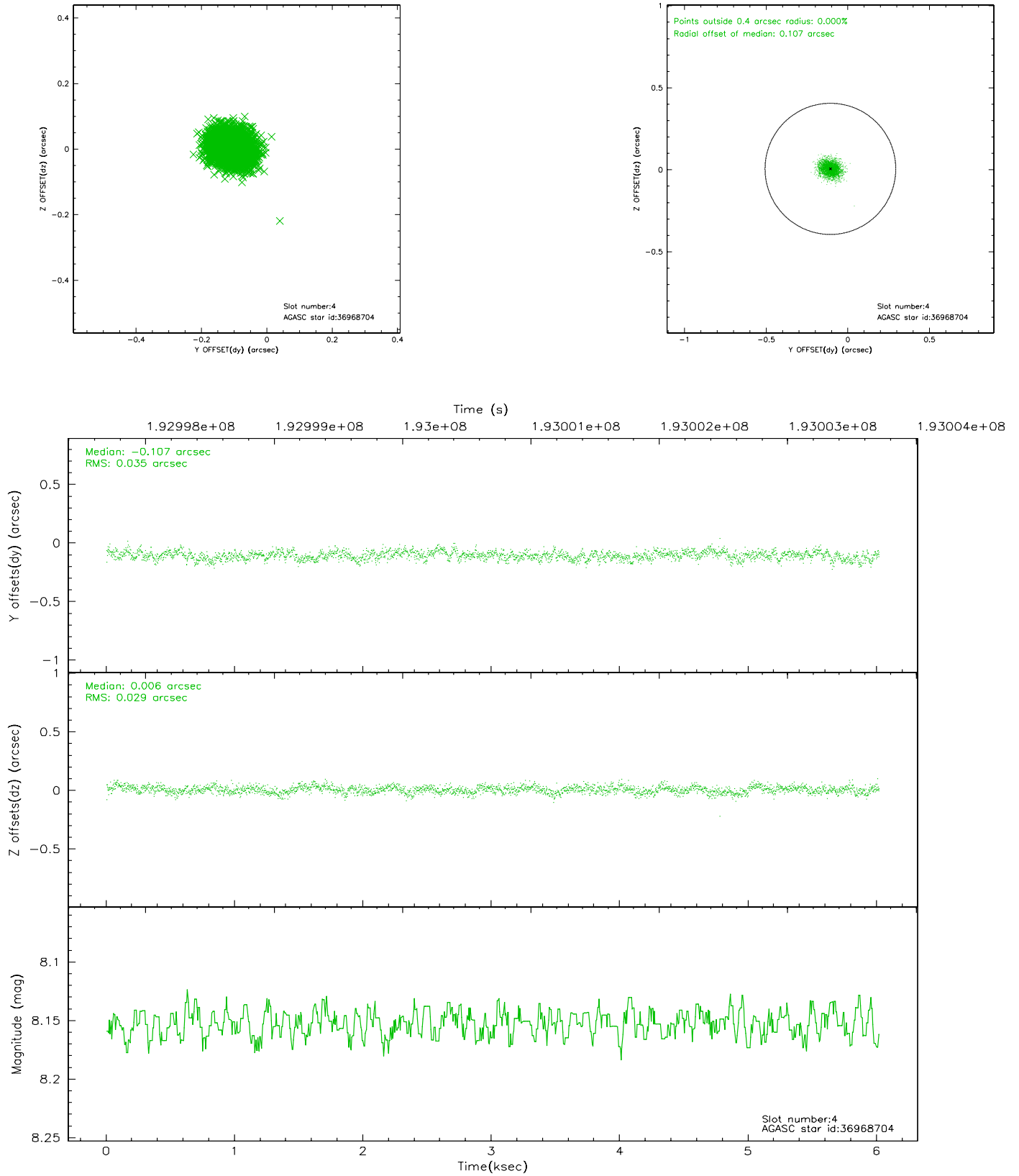
slot	status	id	mag	n_pts	med_dy	med_dz	dr1	dr2	ra	dec	mean_y	mean_z
0	FID	ACIS-S-2	7.10	1468	-0.026	-0.009	0.007	0.011	0.000000	0.000000	-760.36	-1730.75
1	FID	ACIS-S-4	7.20	1468	0.047	0.015	0.005	0.008	0.000000	0.000000	2152.52	176.78
2	FID	ACIS-S-5	7.23	1468	-0.052	0.003	0.006	0.010	0.000000	0.000000	-1811.99	171.50
3	GUIDE	36968264	9.83	2935	0.042	-0.119	0.109	0.181	186.857069	0.199456	1573.33	91.16
4	GUIDE	36968704	8.15	2935	-0.107	0.006	0.048	0.079	186.570138	0.514751	2270.66	1458.88
5	GUIDE	36969392	8.79	2936	-0.036	-0.103	0.065	0.104	186.429114	0.515782	2095.09	1935.23
6	GUIDE	36970160	8.86	2936	0.000	0.176	0.077	0.122	186.752121	0.119529	1171.44	343.86
7	GUIDE	647628352	9.44	2934	0.108	0.045	0.089	0.148	186.642249	-0.148810	127.79	371.75

2.4 Star Slots

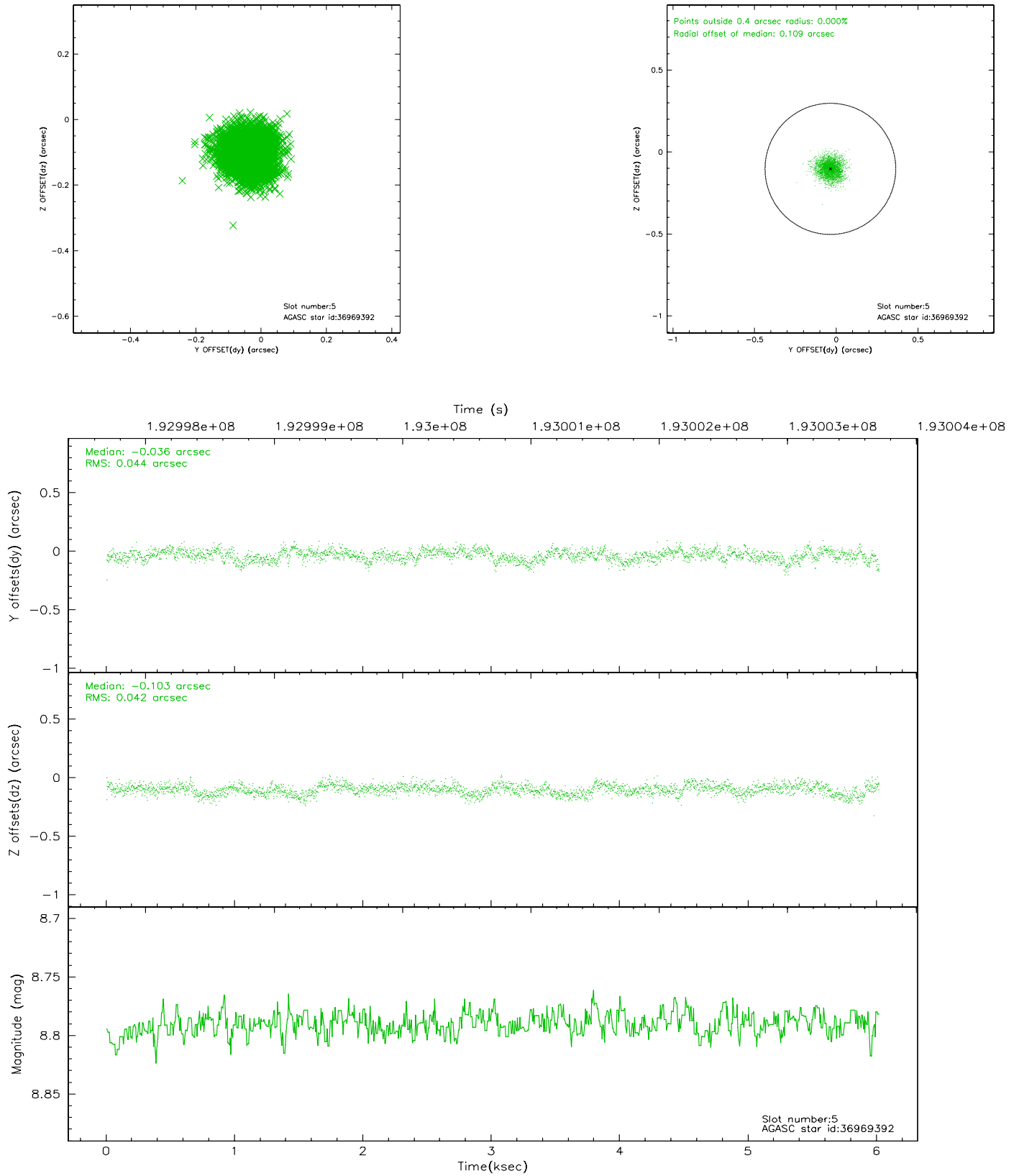
2.4.1 Slot 3



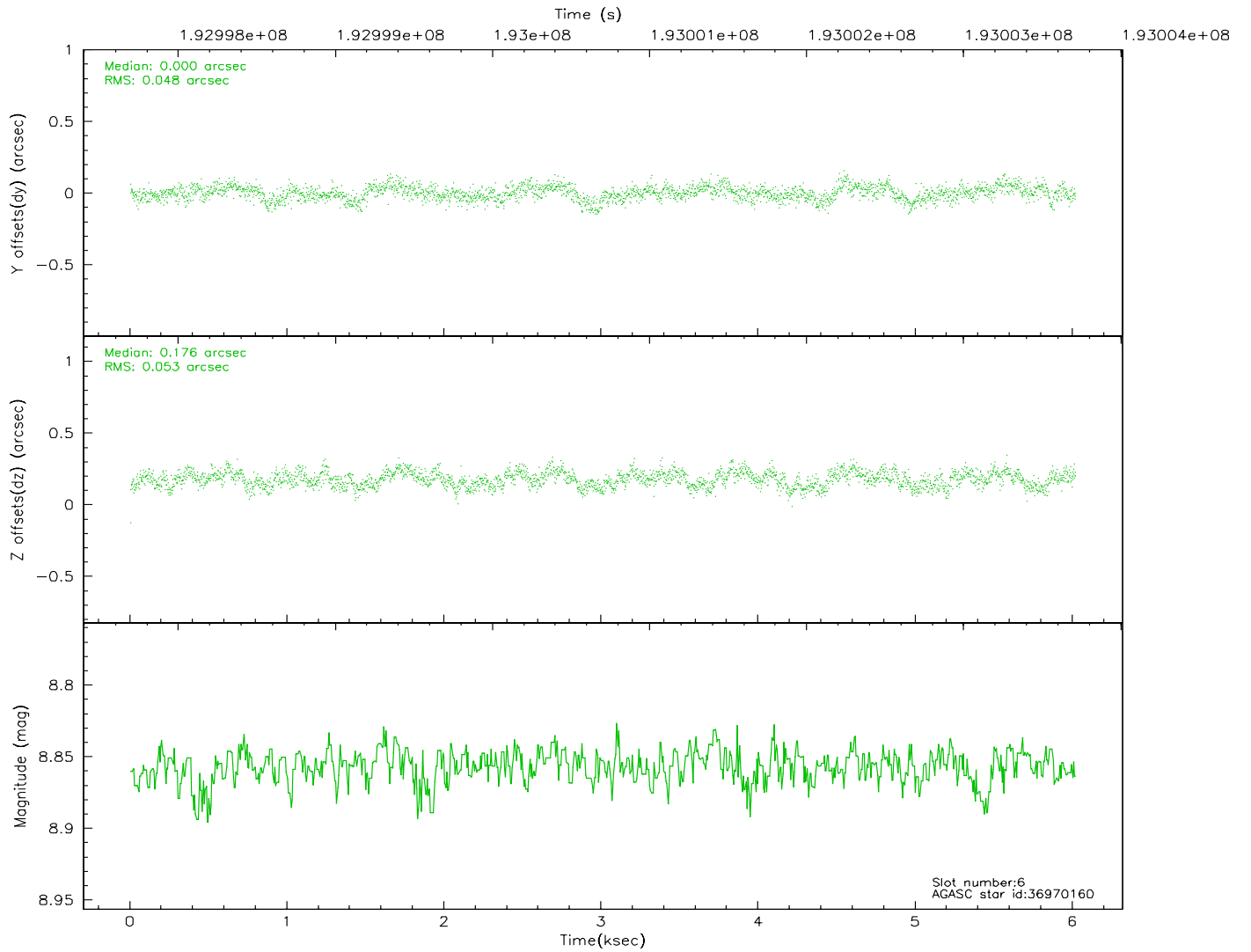
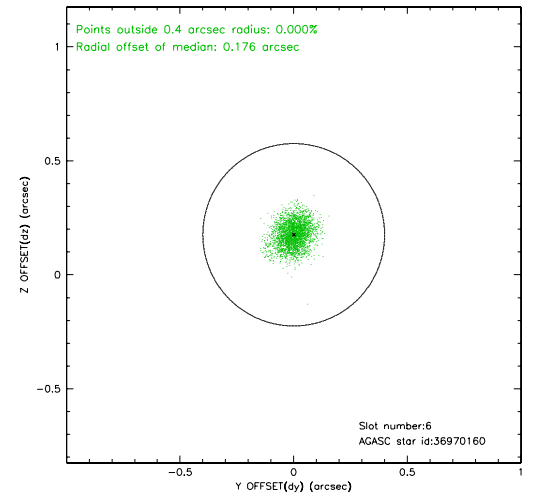
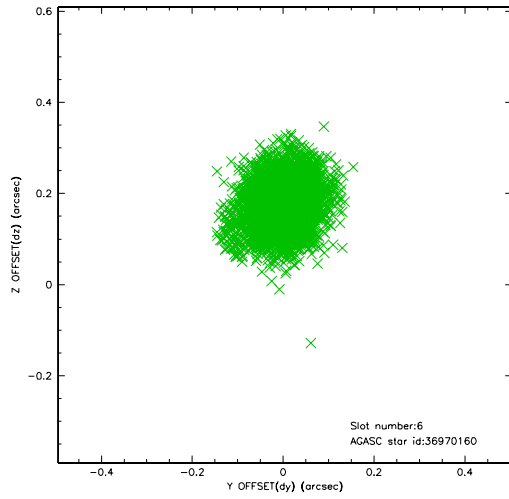
2.4.2 Slot 4



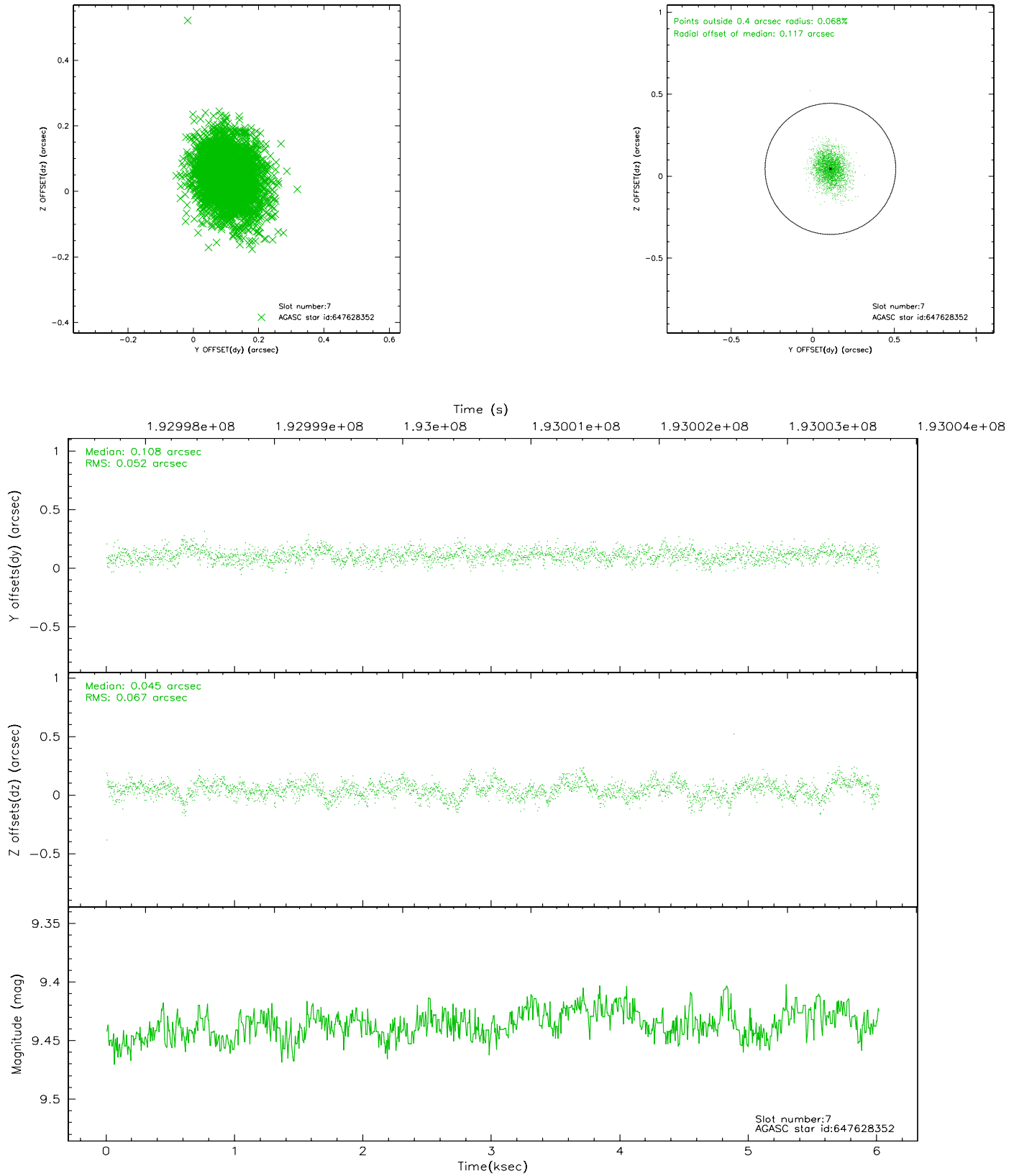
2.4.3 Slot 5



2.4.4 Slot 6

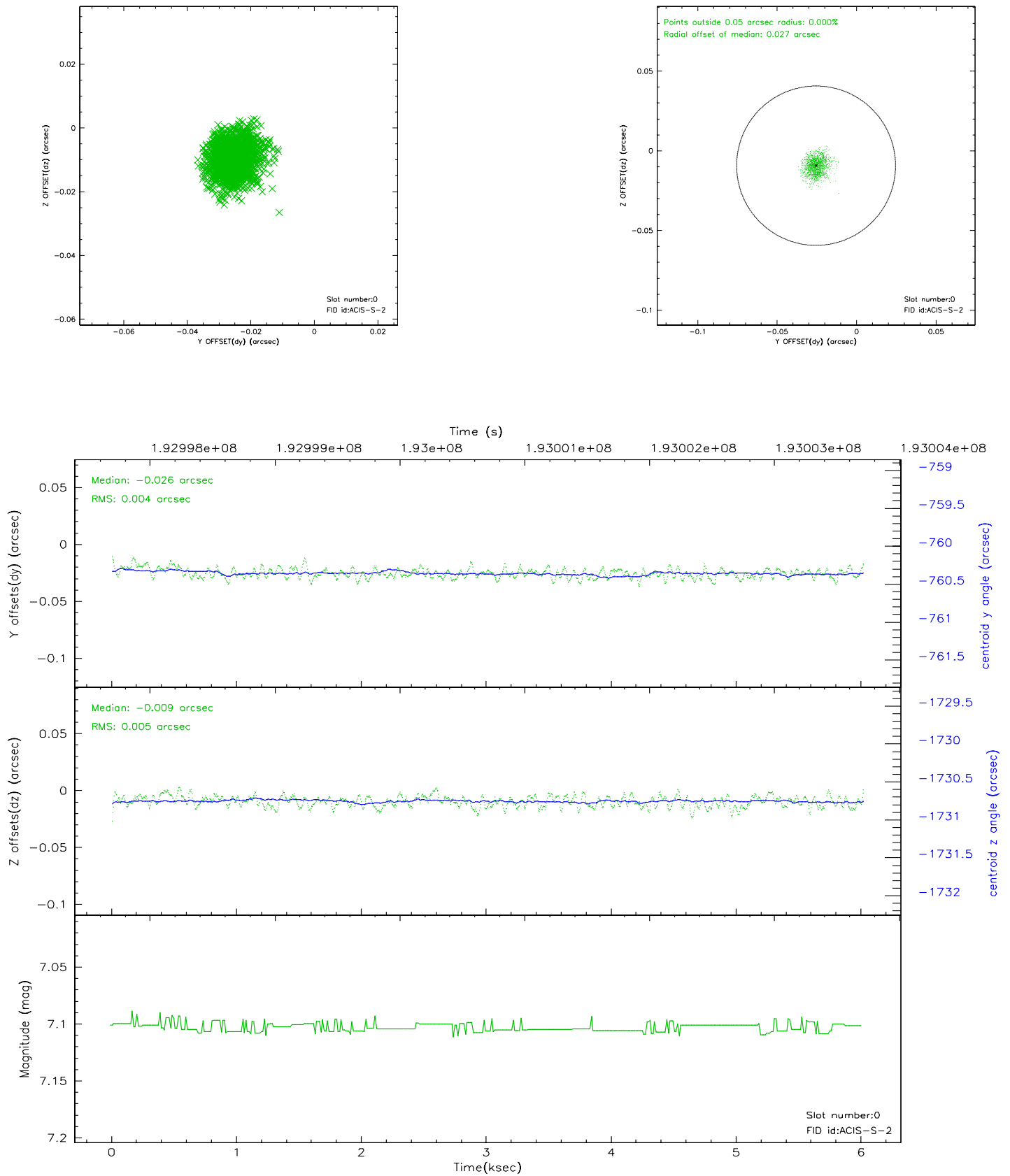


2.4.5 Slot 7

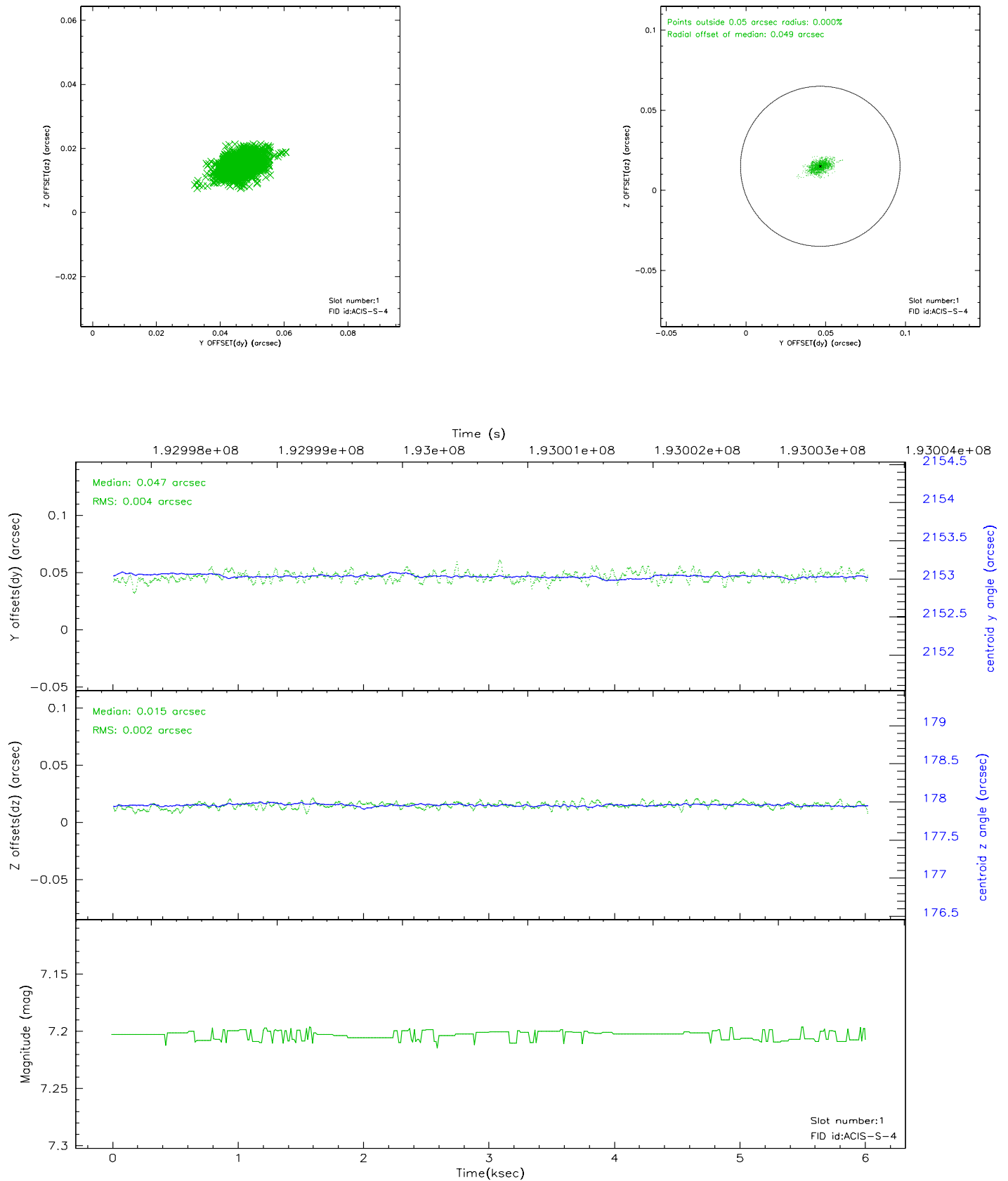


2.5 FID Slots

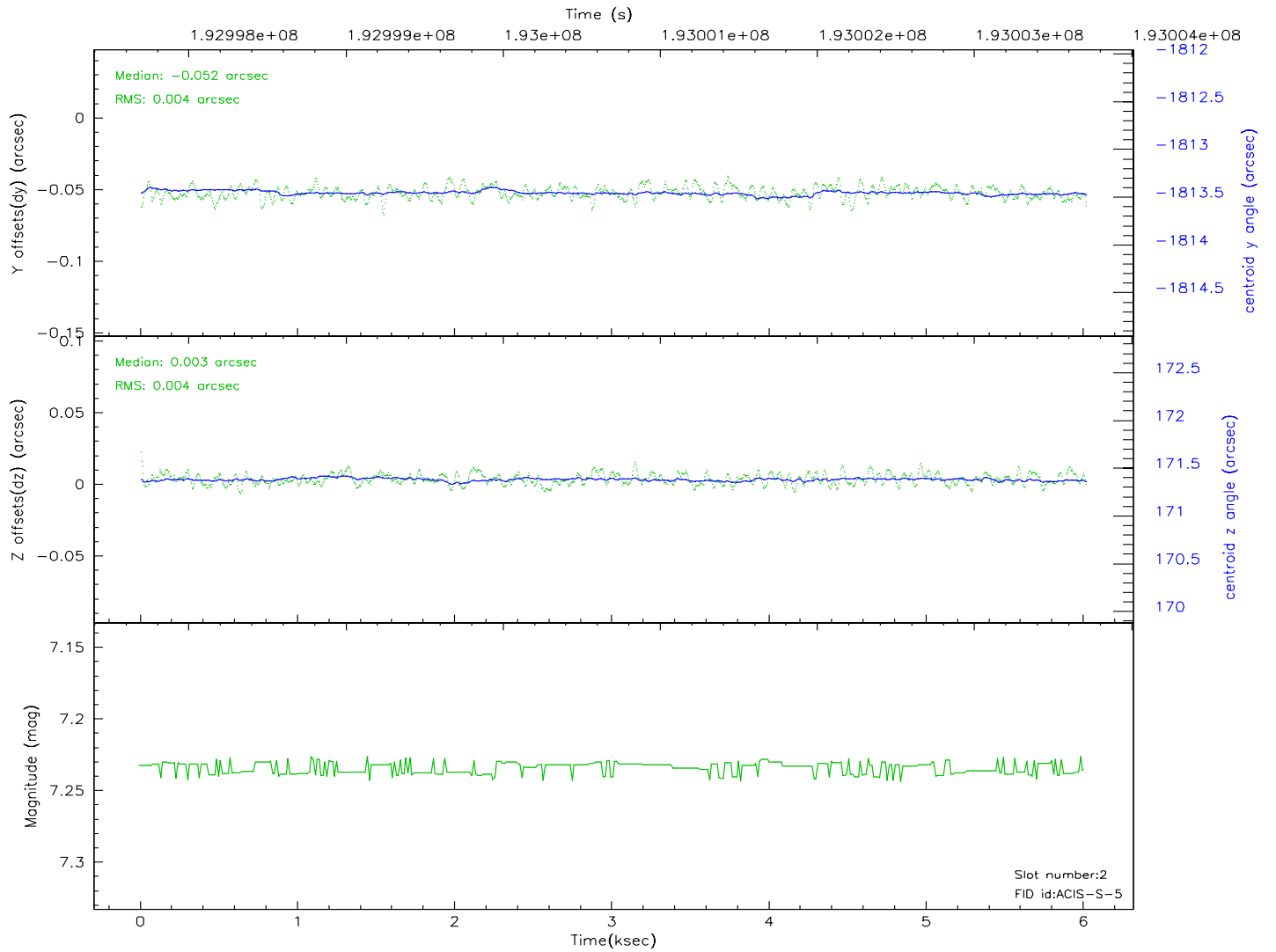
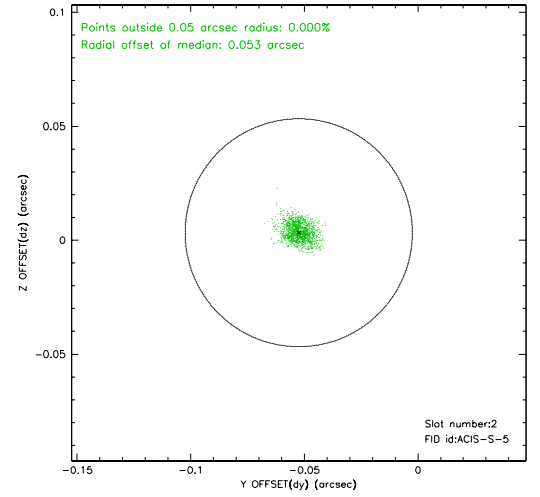
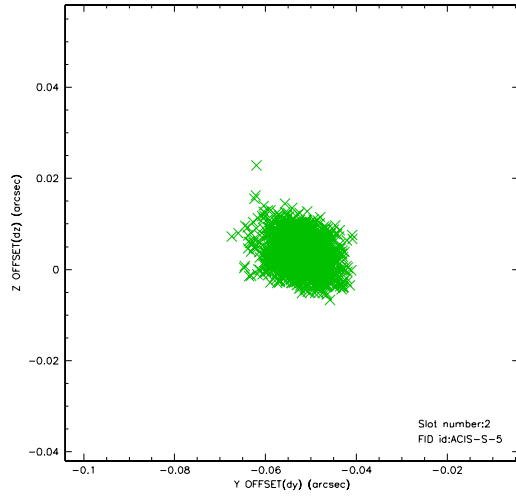
2.5.1 Slot 0



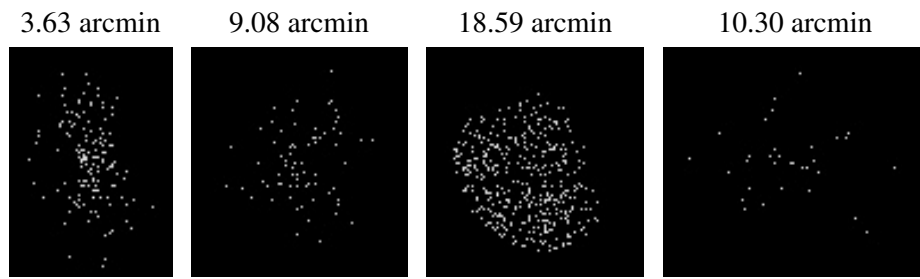
2.5.2 Slot 1



2.5.3 Slot 2



3 Point Sources



A Summary

A.1 Status

V&V Scientist	Jen Lauer
V&V Date (YYYY-MM-DD)	2006.06.02
V&V Edition	1
V&V Disposition and Status	OK
V&V Charge Time	4.959

A.2 Comments