

V&V Reference Report

L2 ASCDS Version : 8.5.1

Observation 4850 - L2 Version 6
Chandra X-Ray Center

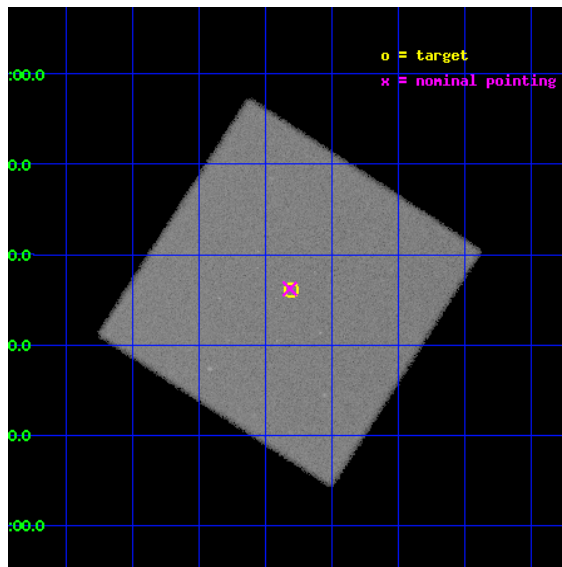
L2 Processing Date : Jan 31 2013

Contents

| | | |
|----------|-------------------------------|-----------|
| 1 | Front | 2 |
| 2 | OBI | 3 |
| 2.1 | OBI | 3 |
| 2.1.1 | Images | 3 |
| 2.1.2 | Parameters | 4 |
| 2.1.3 | Events | 4 |
| 2.2 | Compared Parameters | 5 |
| 2.3 | Aspect | 6 |
| 2.4 | Star Slots | 9 |
| 2.4.1 | Slot 4 | 9 |
| 2.4.2 | Slot 5 | 10 |
| 2.4.3 | Slot 6 | 11 |
| 2.4.4 | Slot 7 | 12 |
| 2.5 | FID Slots | 13 |
| 2.5.1 | Slot 0 | 13 |
| 2.5.2 | Slot 1 | 14 |
| 2.5.3 | Slot 2 | 15 |
| A | Summary | 16 |
| A.1 | Status | 16 |
| A.2 | Comments | 16 |

1 Front

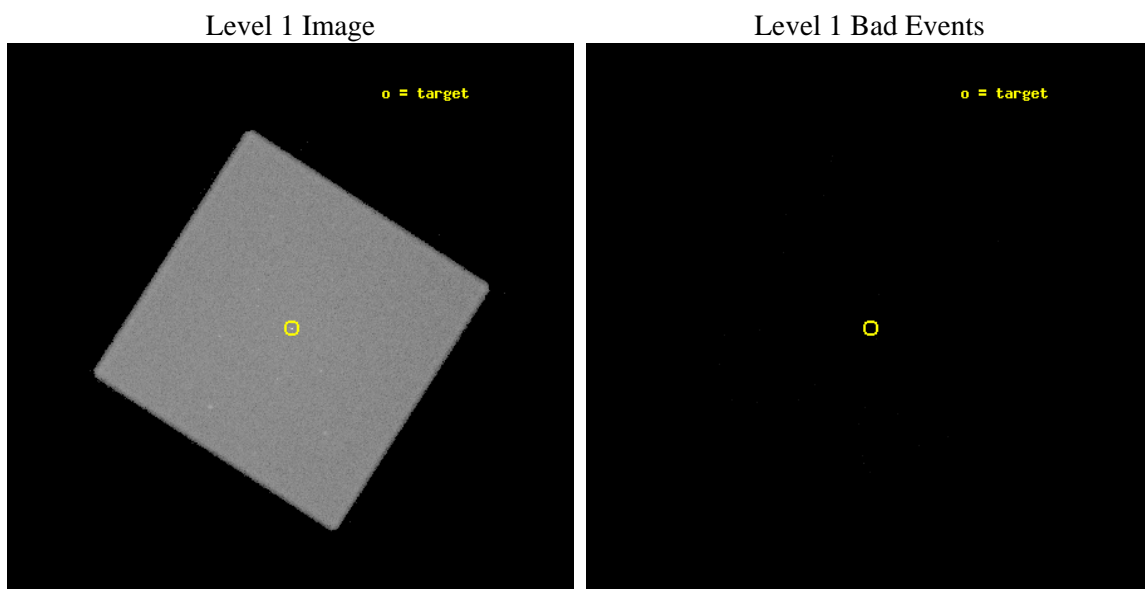
| | | |
|----------|--|---------------------------------------|
| seq_num | 700932 | Sequence number |
| obs_id | 4850 | Observation id |
| title | EXTENDED EMISSION AND ACCRETION RATES IN BL LACERTAE OBJECTS | Propo |
| observer | Dr. Rita Sambruna | Principal investigator |
| object | 1ES 1239+069 | Source name |
| ra_targ | 190.45125 | Observer's specified target RA [deg] |
| dec_targ | 6.600278 | Observer's specified target Dec [deg] |
| ra_nom | 190.45364788294 | Nominal RA [deg] |
| dec_nom | 6.6036680851508 | Nominal Dec [deg] |
| roll_nom | 77.809902195156 | Nominal Roll [deg] |
| revision | 6 | Processing version of data |
| ontime | 20515.632178277 | [s] |
| livetime | 20379.882118688 | Ontime multiplied by DTCOR |
| l2events | 720925 | Number of level 2 events |



2 OBI

2.1 OBI

2.1.1 Images



2.1.2 Parameters

| | | | | | |
|----------|---------------------|--------------------------------|----------------|-----------------|---|
| obi_num | 2 | Obi number | sched_exp_time | 20350.000000 | [s] Scheduled observation exposure time |
| ascdsver | 8.5.1.1 | Processing system revision | ontime | 20515.632178277 | [s] |
| caldsver | 4.5.5 | | l1events | 1123800 | Number of level 1 events |
| date | 2013-01-31T02:14:27 | Date and time of file creation | | | |
| revision | 6 | Processing version of data | | | |

2.1.3 Events

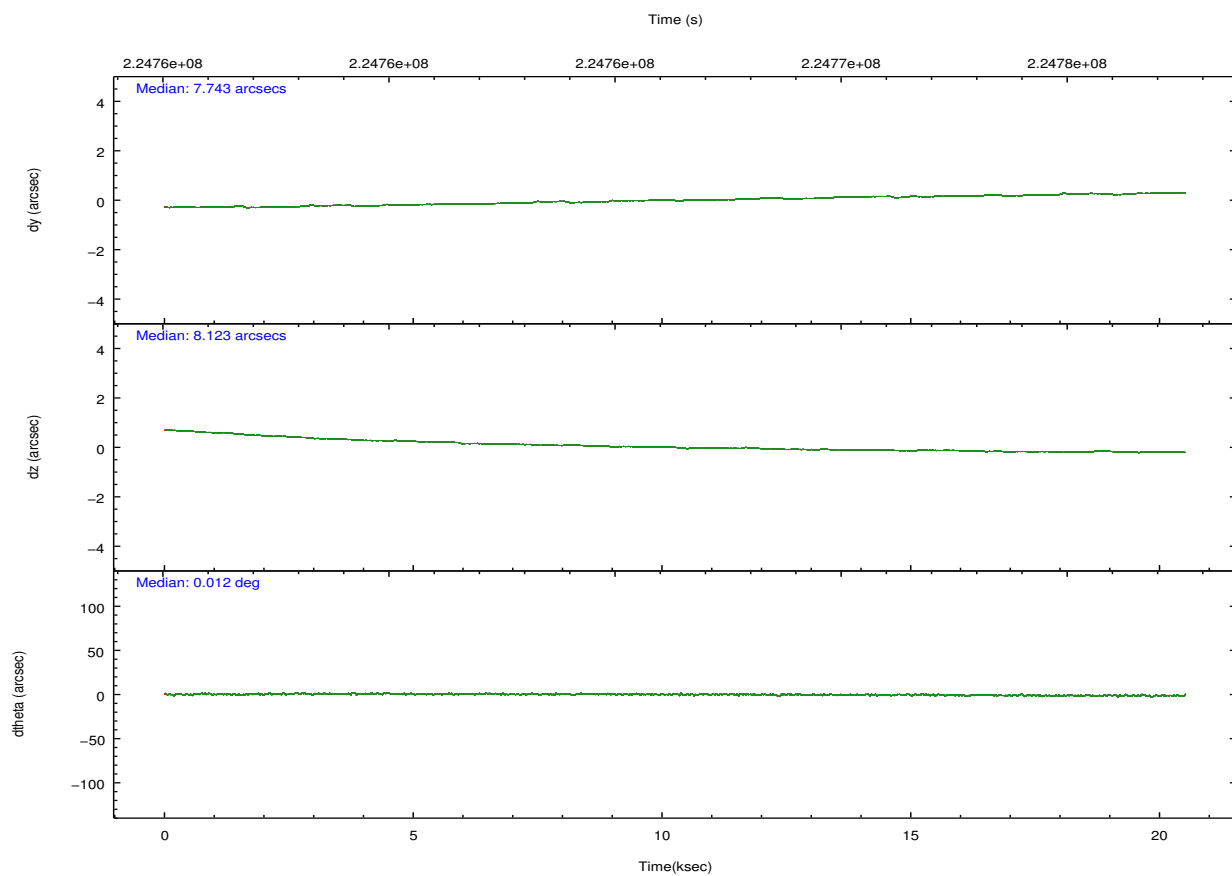
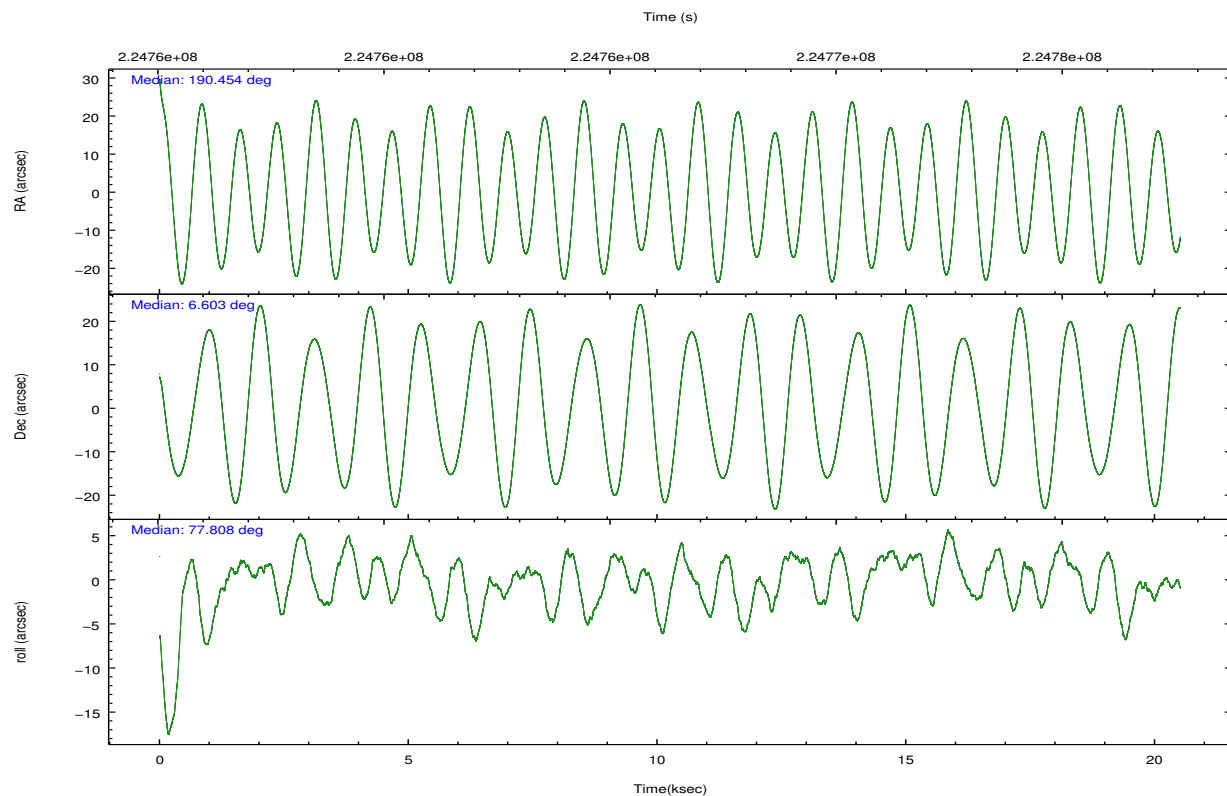
Level 1 Events

| | |
|-----------------|----------------------|
| | segment 0 |
| level 1 events | 1123800 |
| rejected events | 50292 |
| rejected % | 4% |

2.2 Compared Parameters

| Parameter | Planned | Actual | Parameter | Planned | Actual |
|-----------------------------------|---------------------|----------------------|------------------------------|-----------|---------|
| Instrument | HRC | HRC | Obspar format version number | 7 | 7 |
| Detector | HRC-I | HRC-I | Obspar file type | PREDICTED | ACTUAL |
| Grating | NONE | NONE | Obspar update status | NONE | UPDATED |
| Data mode | OBSERVING | OBSERVING | | | |
| Observation mode | POINTING | POINTING | | | |
| [deg] Pointing RA | 190.462595 | 190.4536478829401 | | | |
| [deg] Pointing Dec | 6.578091 | 6.603668085150822 | | | |
| [deg] Pointing Roll | 77.904356 | 77.80990219515634 | | | |
| [mm] SIM focus pos | -1.040293 | -1.038866356238299 | | | |
| [mm] SIM defocus | 0 | 0.001426264420575141 | | | |
| [mm] SIM translation stage pos | 126.985494 | 126.9829799899862 | | | |
| [mm] SIM translation stage offset | 0 | 0.002508901615314585 | | | |
| [s] Observation start time (MET) | 224756236.184000 | 224755129.43495 | | | |
| Observation start date | 2005-02-14T08:16:12 | 2005-02-14T07:58:49 | | | |
| [s] Observation end time (MET) | 224776586.184000 | 224777031.63594 | | | |
| Observation end date | 2005-02-14T13:55:22 | 2005-02-14T14:03:51 | | | |

2.3 Aspect

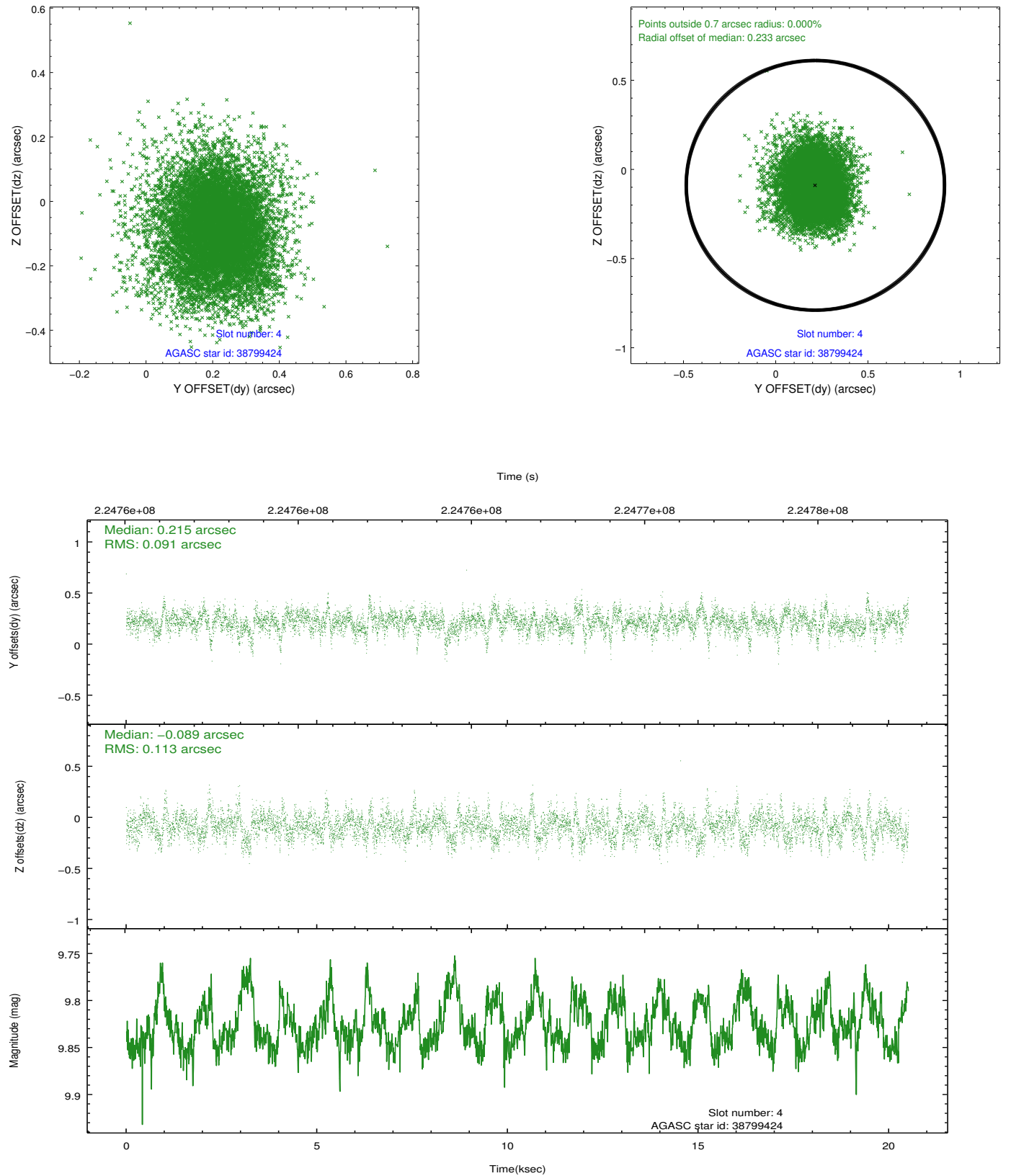


Slot Statistics

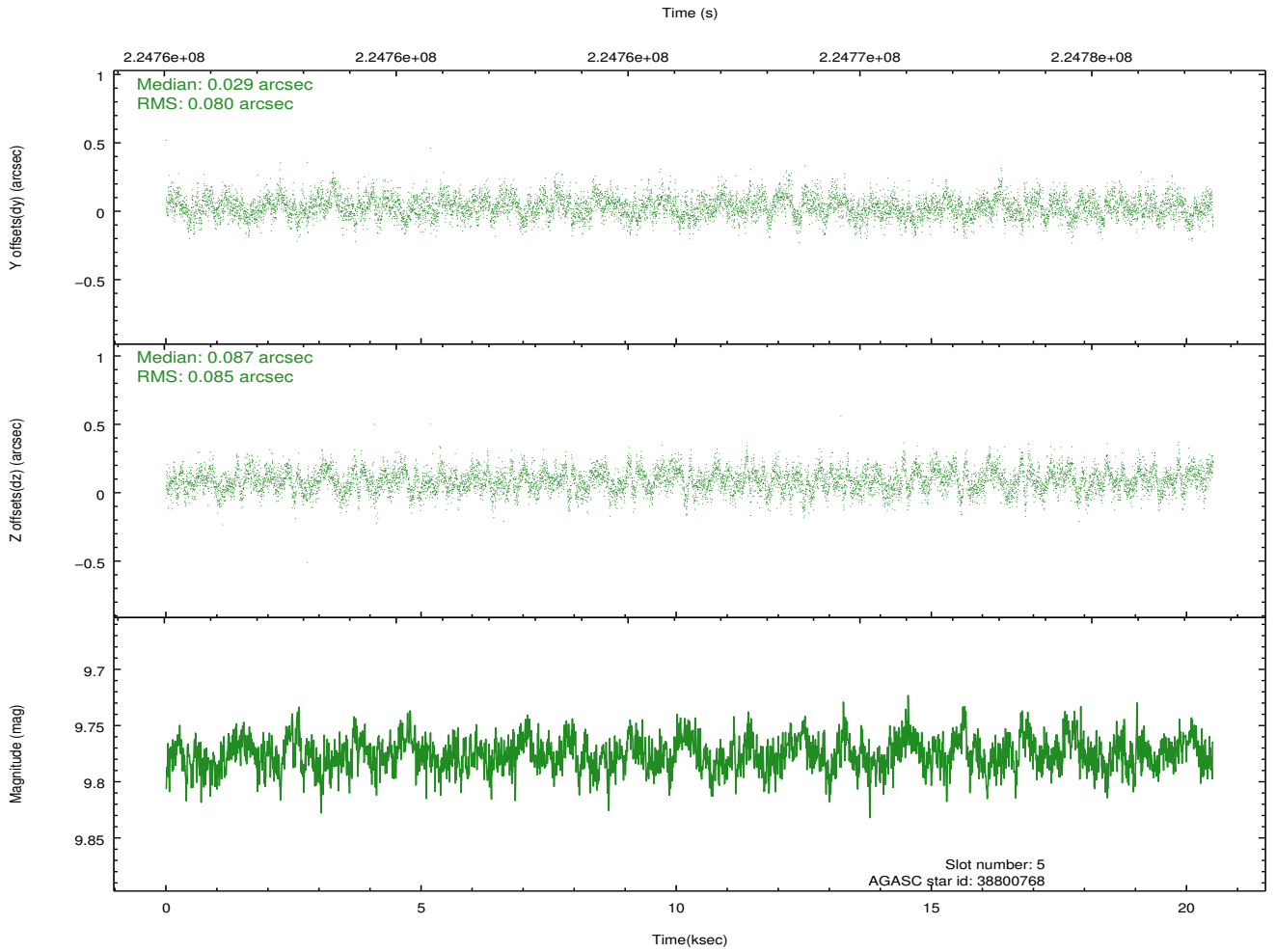
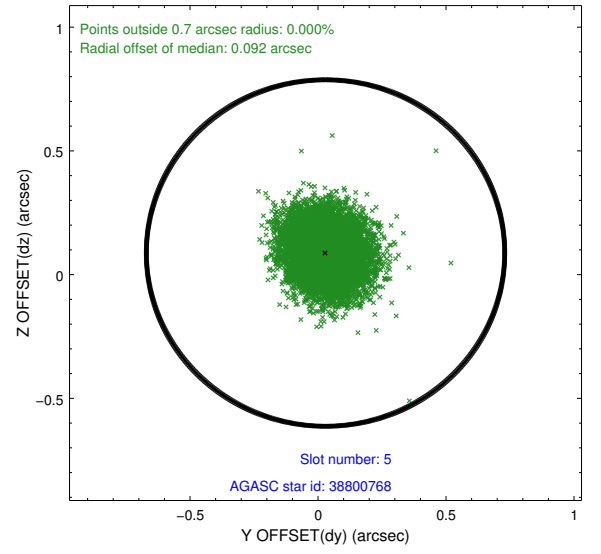
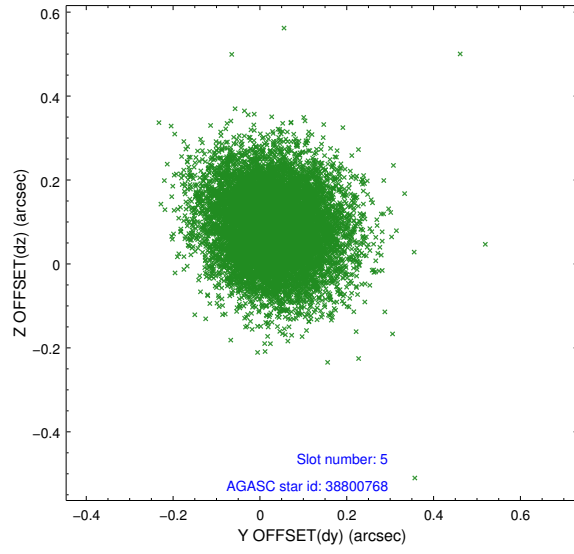
| slot | status | id | mag | n_pts | med_dy | med_dz | dr1 | dr2 | ra | dec | mean_y | mean_z |
|------|---------|----------|------|-------|--------|--------|-------|-------|------------|----------|----------|----------|
| 0 | FID | HRC-I-1 | 7.01 | 5005 | -0.024 | 0.001 | 0.007 | 0.011 | 0.000000 | 0.000000 | -763.45 | -1296.02 |
| 1 | FID | HRC-I-2 | 7.05 | 5004 | 0.122 | -0.087 | 0.008 | 0.013 | 0.000000 | 0.000000 | 849.17 | -1298.04 |
| 2 | FID | HRC-I-4 | 7.04 | 5004 | 0.018 | -0.006 | 0.005 | 0.010 | 0.000000 | 0.000000 | 1279.70 | 1005.74 |
| 3 | OMITTED | | 0.00 | 0 | 0.000 | 0.000 | 0.000 | 0.000 | 0.000000 | 0.000000 | 0.00 | 0.00 |
| 4 | GUIDE | 38799424 | 9.83 | 10001 | 0.215 | -0.089 | 0.151 | 0.261 | 190.857817 | 6.447245 | -163.02 | -1480.77 |
| 5 | GUIDE | 38800768 | 9.78 | 10001 | 0.029 | 0.087 | 0.123 | 0.200 | 190.036688 | 6.172754 | -1745.17 | 1185.14 |
| 6 | GUIDE | 38800784 | 9.63 | 10007 | -0.155 | -0.145 | 0.107 | 0.173 | 190.463415 | 7.032478 | 1600.30 | 340.40 |
| 7 | GUIDE | 38801128 | 8.78 | 10008 | -0.088 | 0.145 | 0.082 | 0.133 | 191.083745 | 6.854707 | 1440.78 | -1961.07 |

2.4 Star Slots

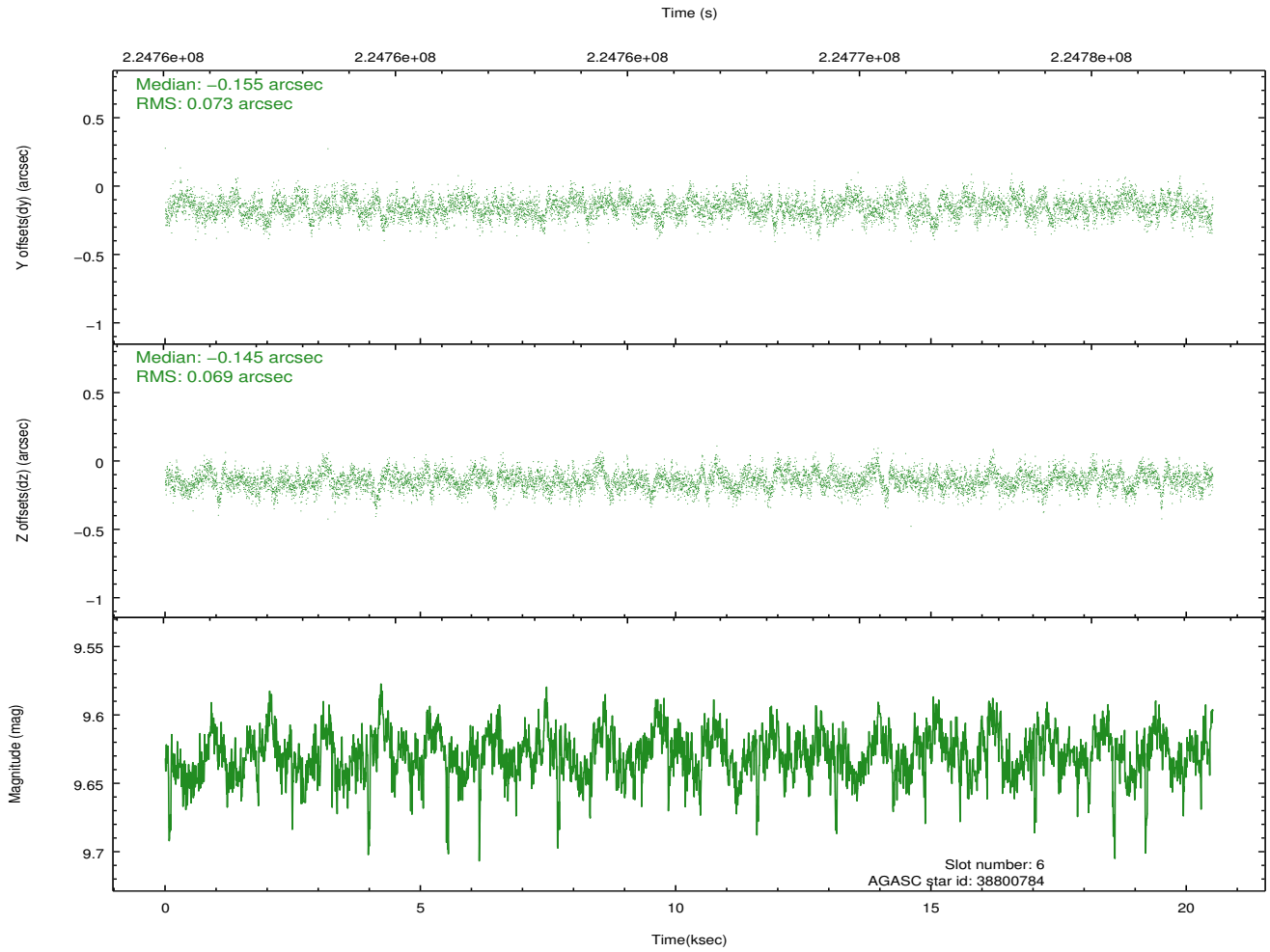
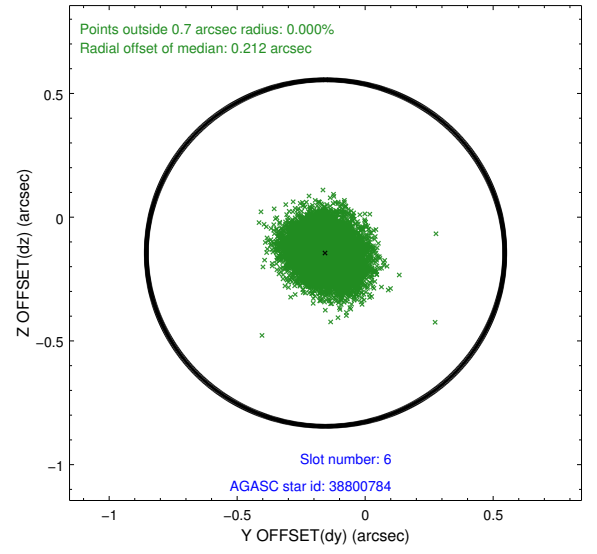
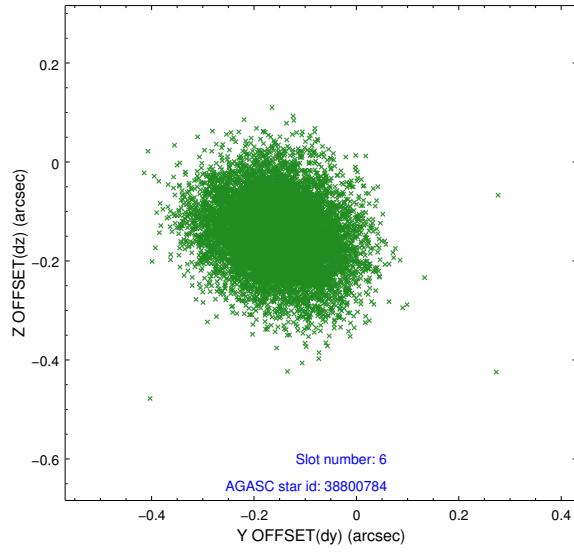
2.4.1 Slot 4



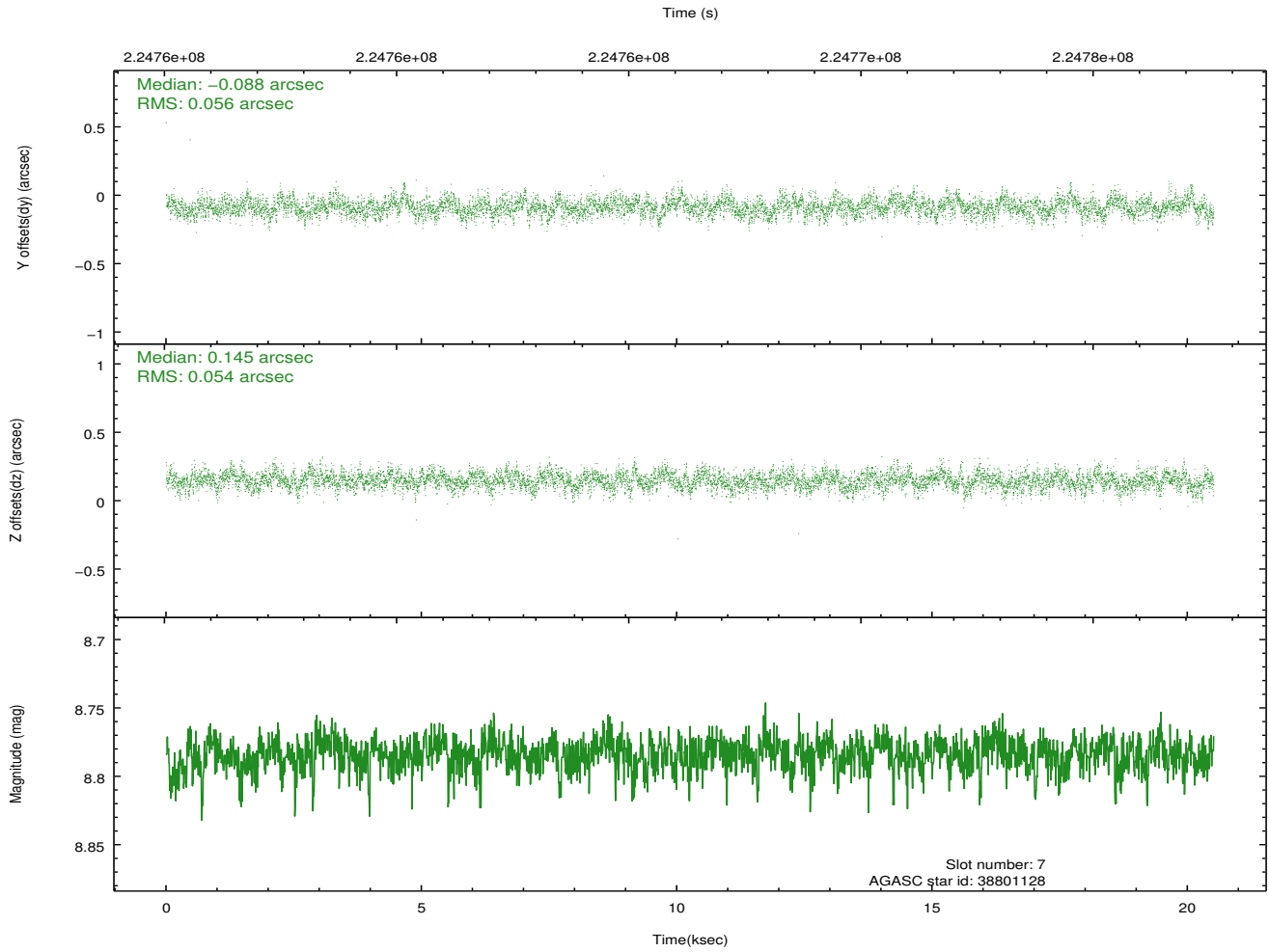
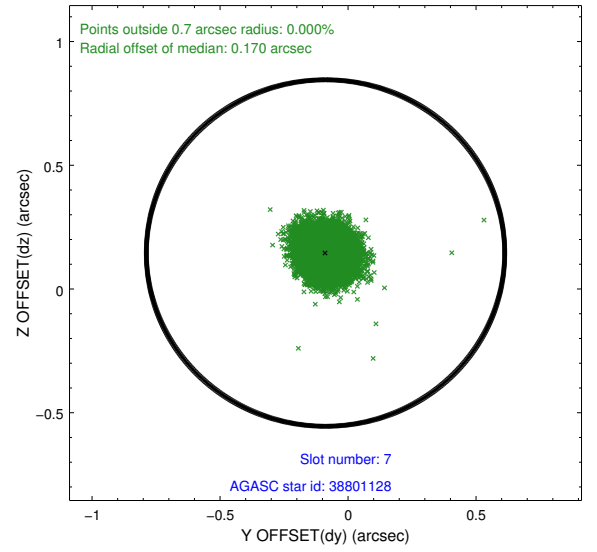
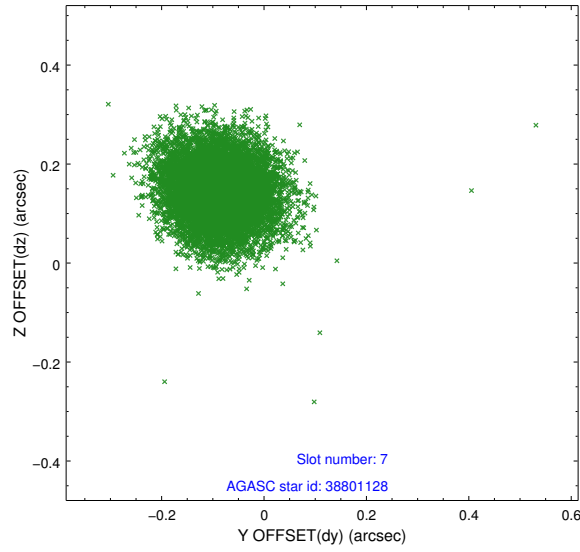
2.4.2 Slot 5



2.4.3 Slot 6

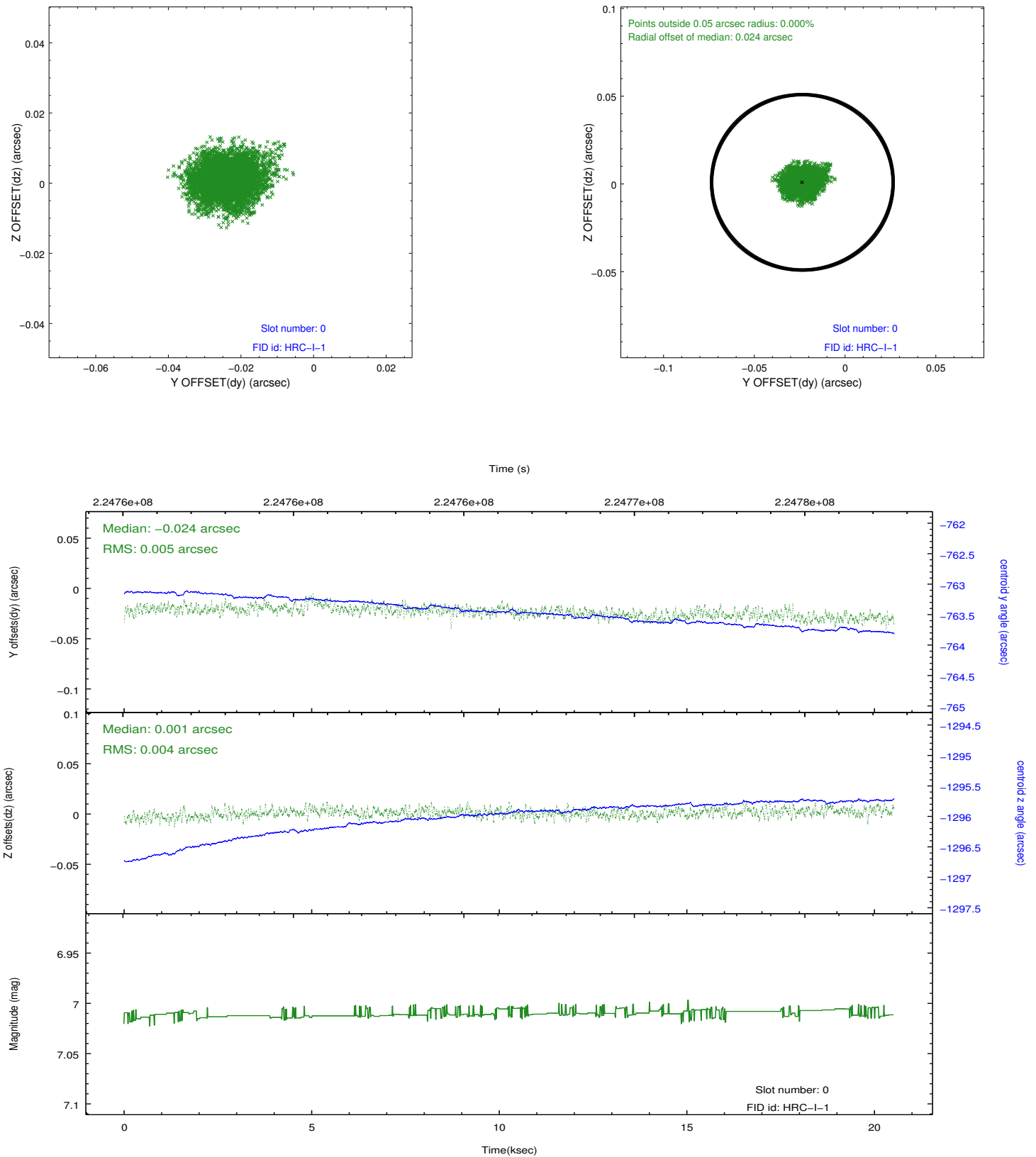


2.4.4 Slot 7

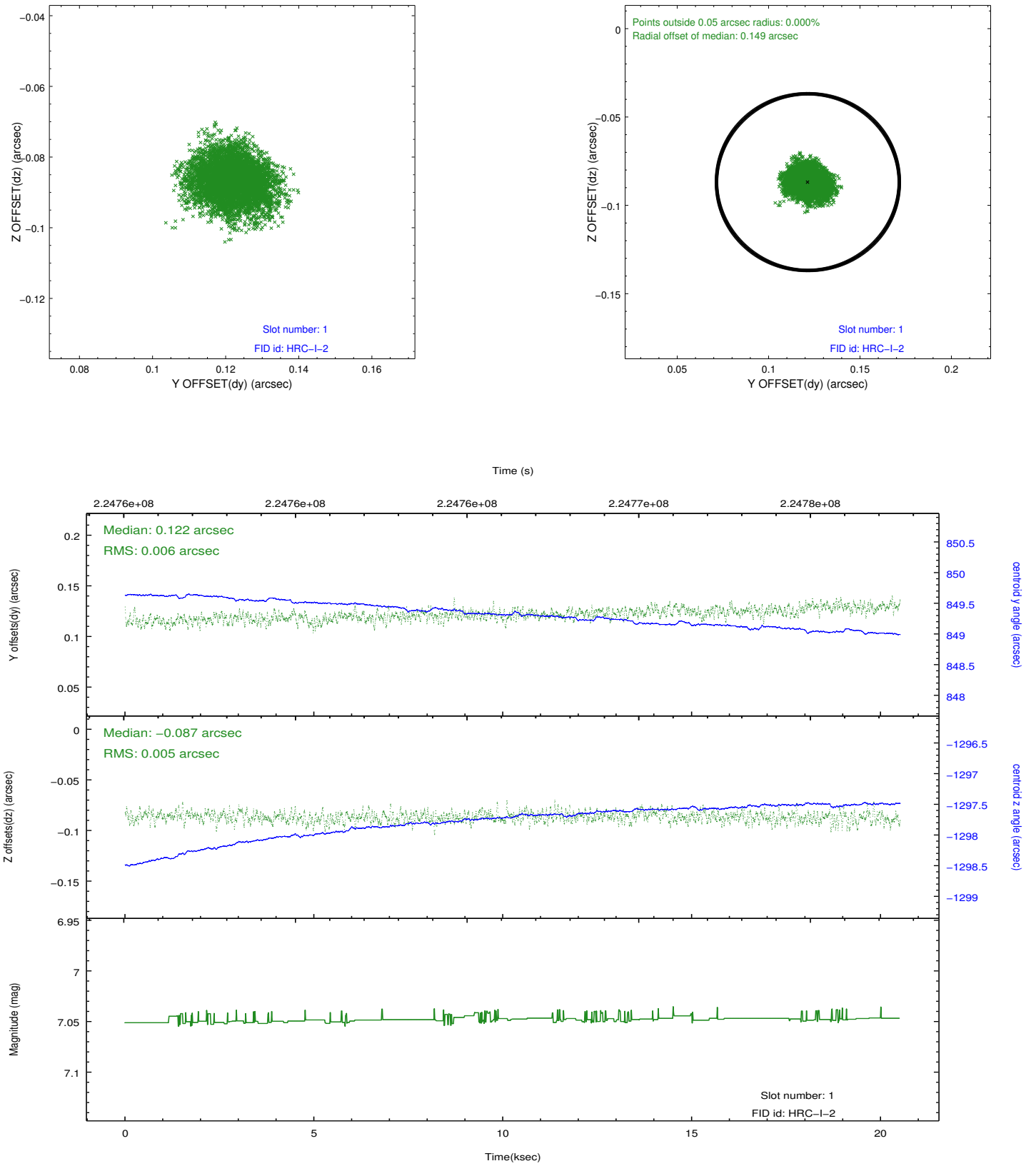


2.5 FID Slots

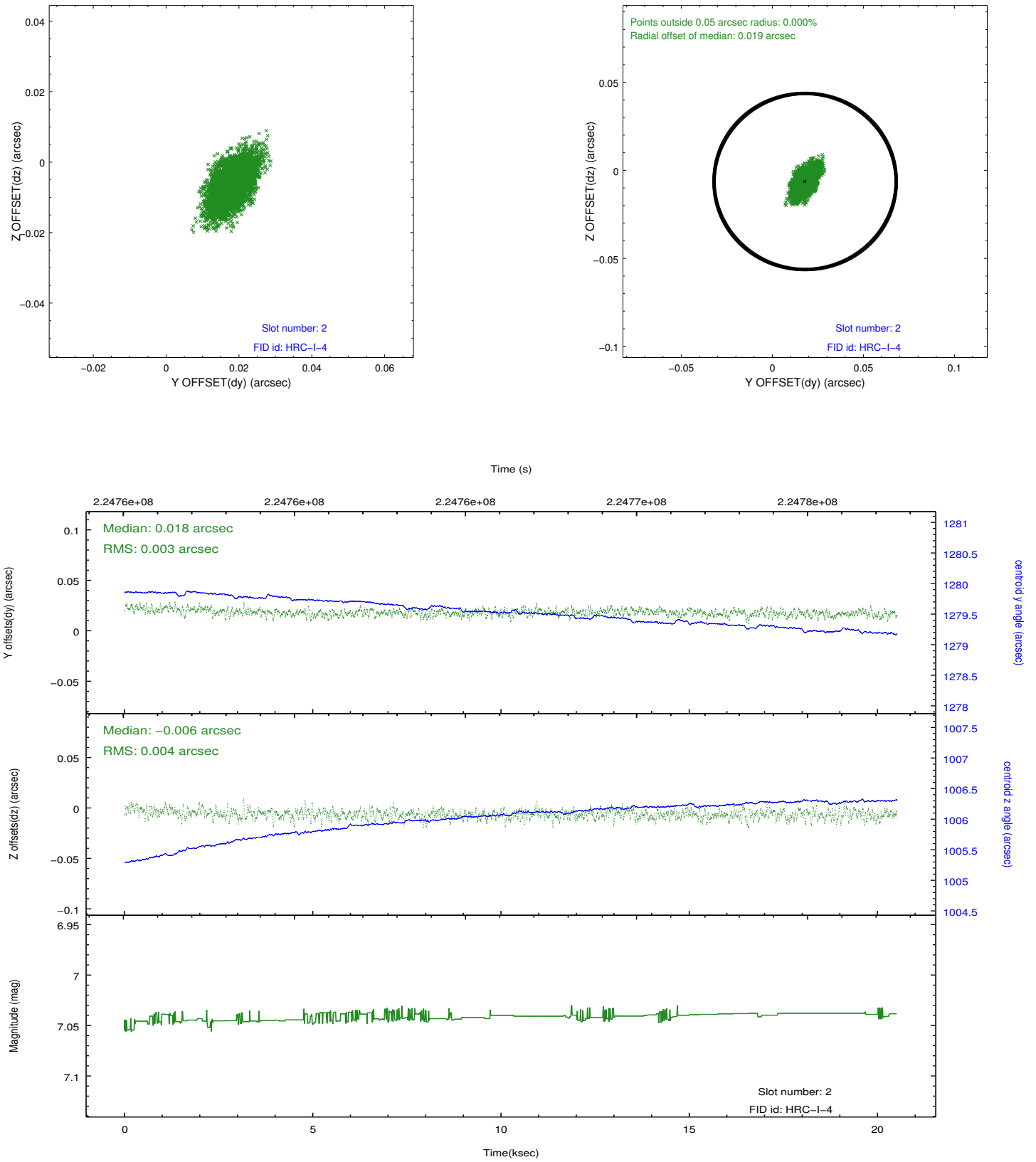
2.5.1 Slot 0



2.5.2 Slot 1



2.5.3 Slot 2



A Summary

A.1 Status

| | |
|----------------------------|---------------|
| V&V Scientist | Beth Sundheim |
| V&V Date (YYYY-MM-DD) | 2013.01.31 |
| V&V Edition | 1 |
| V&V Disposition and Status | OK |
| V&V Charge Time | 20.51563 |

A.2 Comments

The guide star in slot 3 was removed from the aspect solution due to poor data quality. The aspect solution is improved by the removal of this star from the solution.