

V&V Reference Report

L2 ASCDS Version : 7.6.7.2

Observation 4847 - L2 Version 001
Chandra X-Ray Center

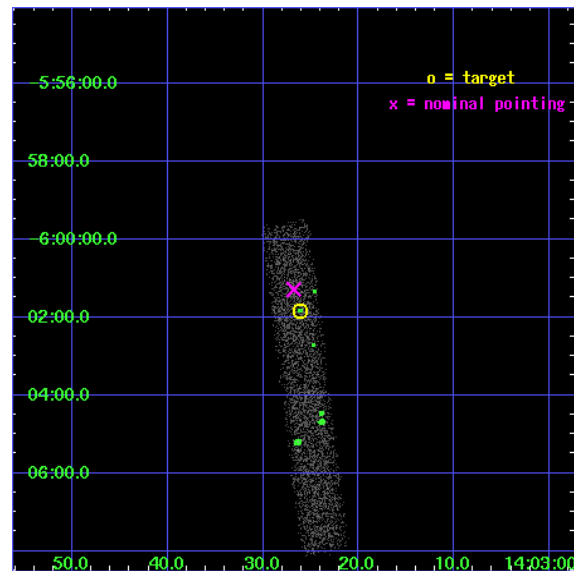
L2 Processing Date : May 27 2006

Contents

1	Front	2
2	OBI	3
2.1	OBI	3
2.1.1	Images	3
2.1.2	Bias	3
2.1.3	Parameters	4
2.1.4	Events	4
2.2	Compared Parameters	5
2.3	Aspect	6
2.4	Star Slots	9
2.4.1	Slot 3	9
2.4.2	Slot 4	10
2.4.3	Slot 5	11
2.4.4	Slot 6	12
2.4.5	Slot 7	13
2.5	FID Slots	14
2.5.1	Slot 0	14
2.5.2	Slot 1	15
2.5.3	Slot 2	16
3	Point Sources	17
A	Summary	18
A.1	Status	18
A.2	Comments	18

1 Front

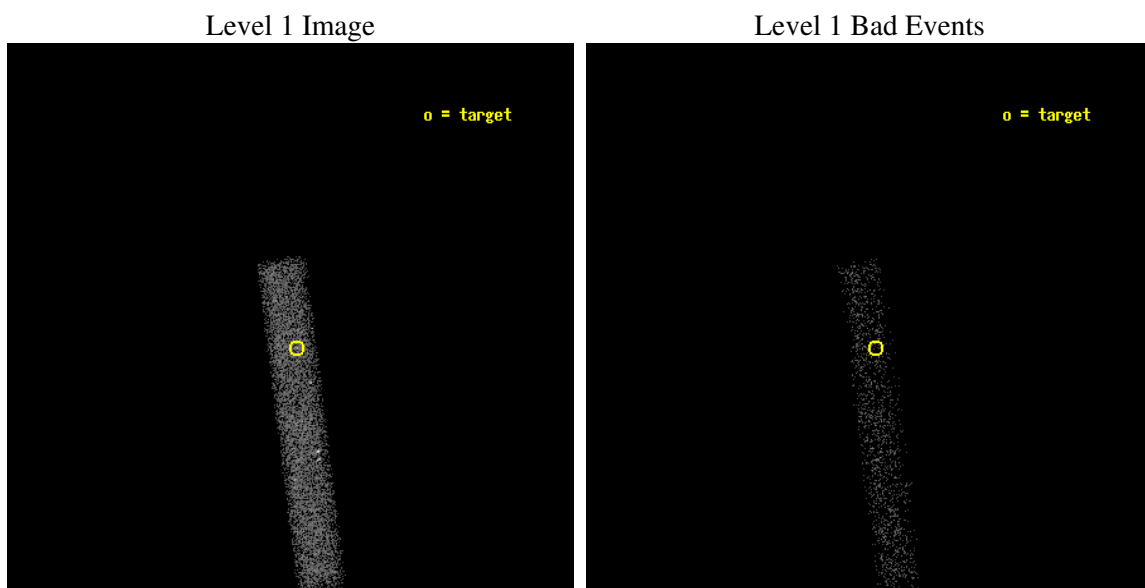
seq_num	700929
obs_id	4847
title	Are there any true Seyfert 2 nuclei?
observer	Prof RICHARD POGGE
object	NGC 5427
dtcycle	0
cycle	P
ra_targ	210.85875
dec_targ	-6.030833
ra_nom	210.86163755311
dec_nom	-6.0215733163873
roll_nom	82.871637304766
revision	2
ontime	9740.8001451492
livetime	8834.391570061
ontime7	9740.8001451492
l2events	5670



2 OBI

2.1 OBI

2.1.1 Images



2.1.2 Bias

Chip 7



2.1.3 Parameters

obi_num	0
ascdsver	7.6.7.2
caldbver	3.2.2
date	2006-05-27T03:07:27
revision	2

sched_exp_time	9600.000000
ontime	10601.599865794
ontime7	10601.599865794
l1events	15097

2.1.4 Events

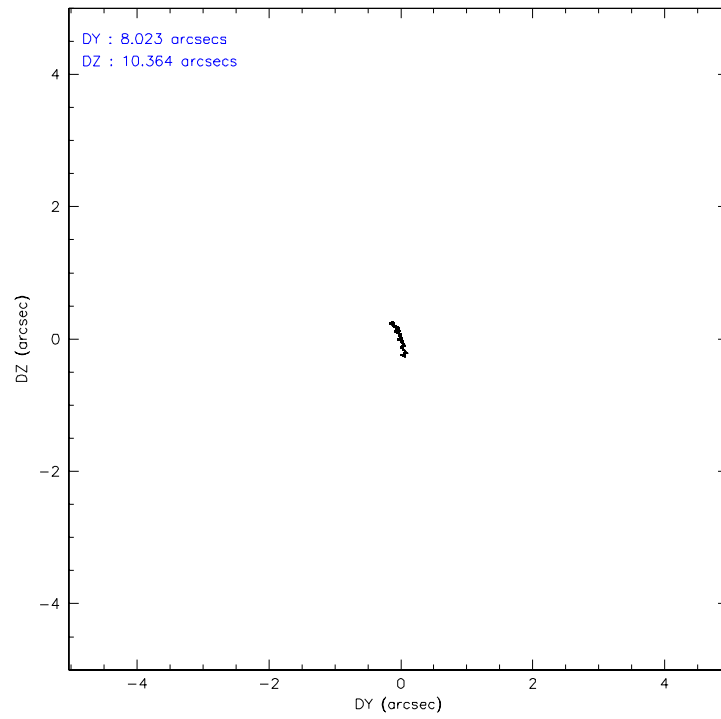
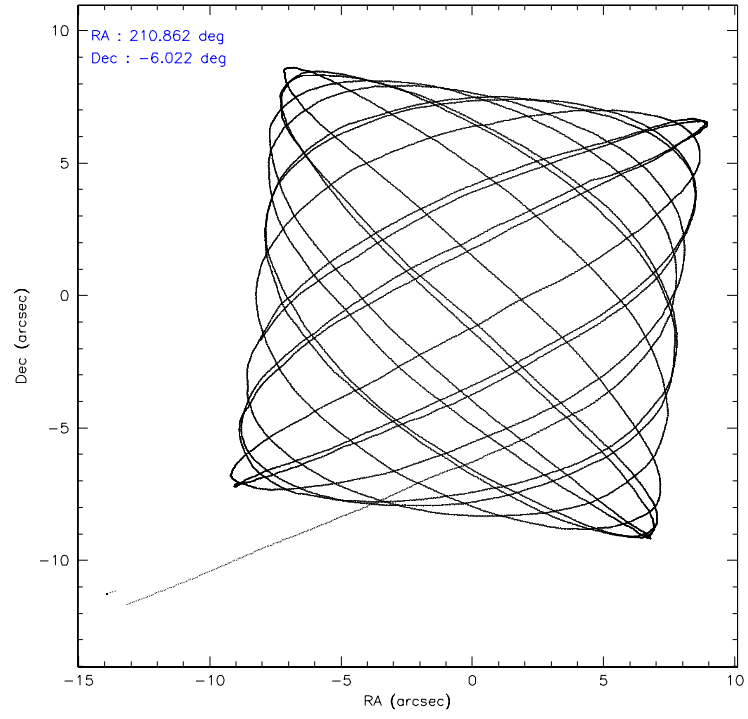
	ccd 7
level 1 events	15097
rejected events	9189
rejected %	60%

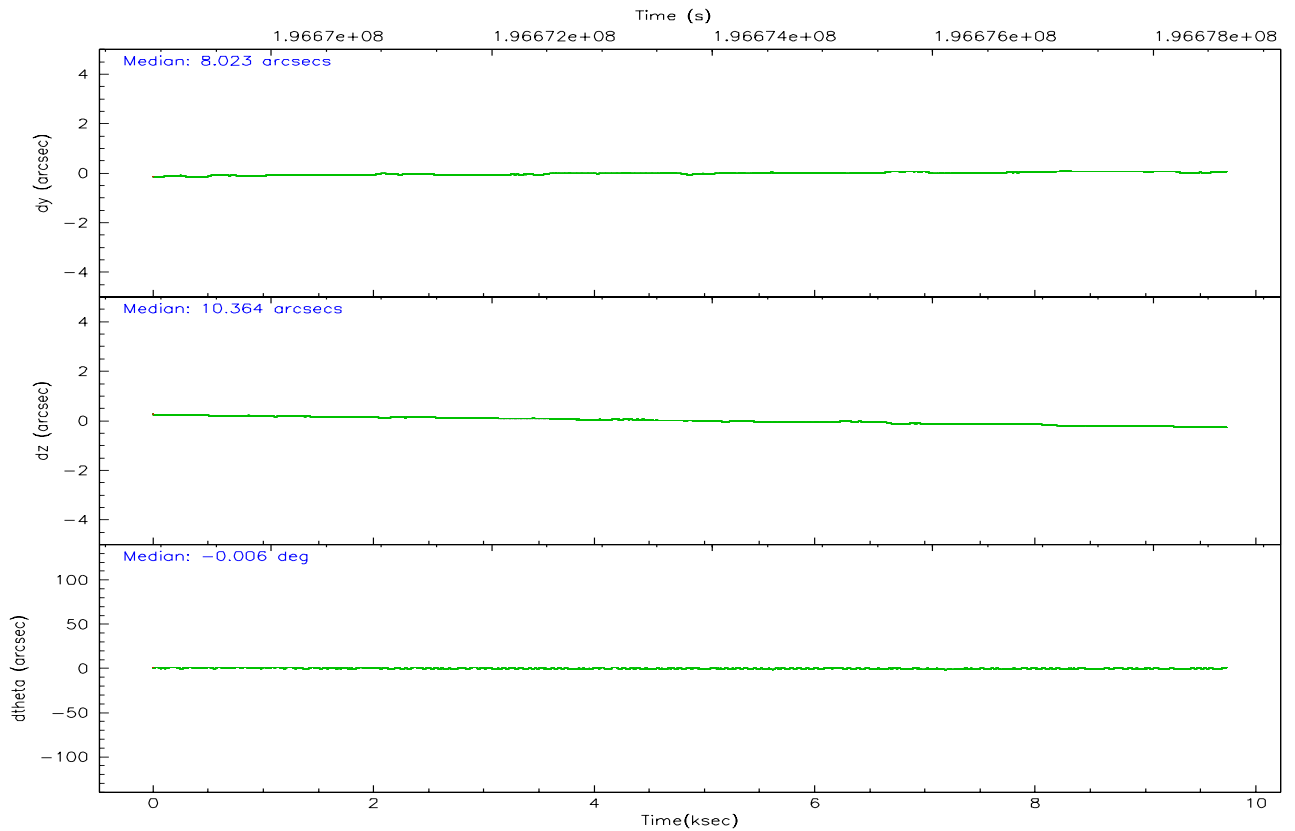
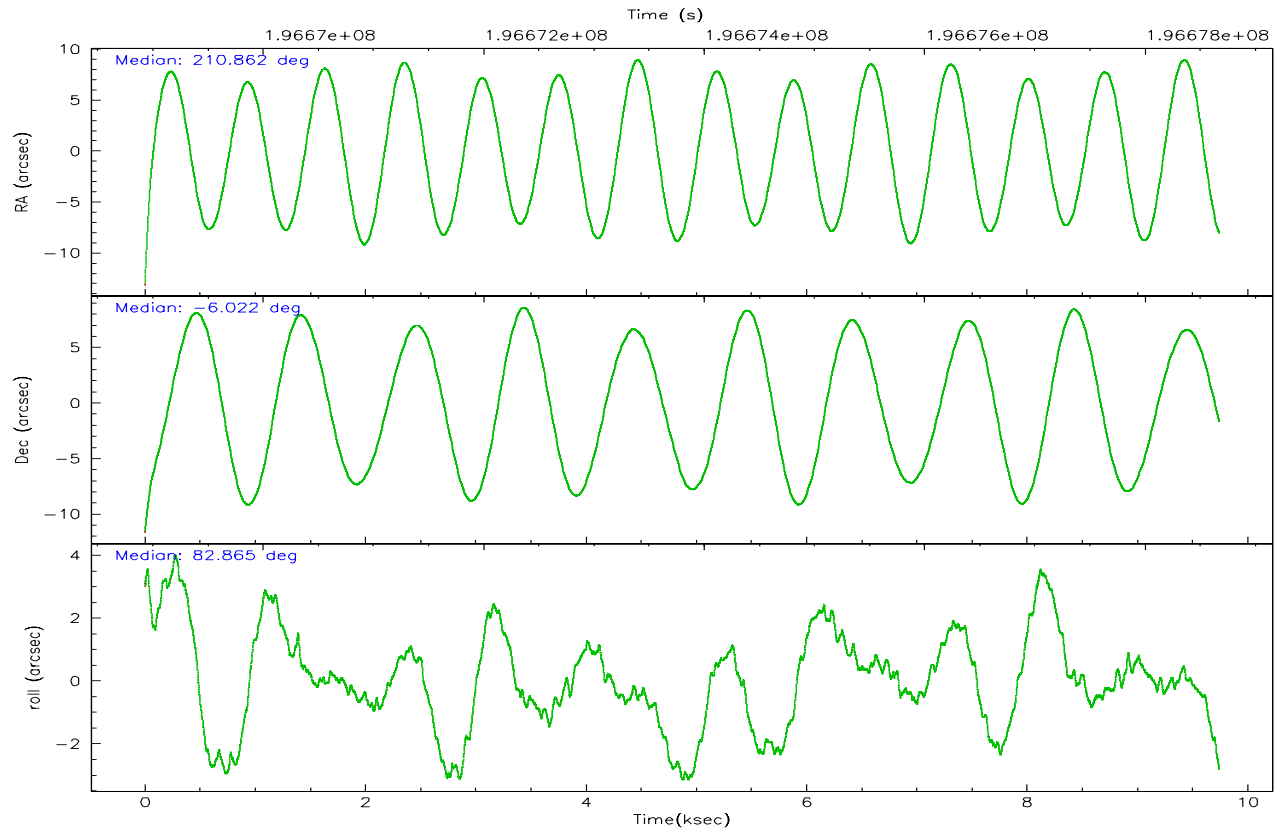
	ccd 7
grade 0 events	922
	6%
grade 1 events	9
	0%
grade 2 events	1726
	11%
grade 3 events	833
	5%
grade 4 events	771
	5%
grade 5 events	958
	6%
grade 6 events	3454
	22%
grade 7 events	6424
	42%

2.2 Compared Parameters

Parameter	Planned	Actual	Parameter	Planned	Actual
Instrument	ACIS	ACIS	Obspar format version number	6	6
Detector	ACIS-7	ACIS-7	Obspar file type	PREDICTED	ACTUAL
Grating	NONE	NONE	Obspar update status	NONE	UPDATED
Data mode	FAINT	FAINT	On-chip summing requested	N	N
Observation mode	POINTING	POINTING	Subarray requested	1/8	1/8
Pointing RA	210.872614	210.8616375531137	Subarray start row	0	449
Pointing Dec	-6.046534	-6.021573316387335	Subarray row count	1024	128
Pointing Roll	82.716152	82.871637304766	Alternating exposures requested	N	N
SIM focus pos (mm)	-0.684267	-0.6828225247311905	Primary exposure time	0.000000	0.4
SIM defocus (mm)	0	0.001444936568705701			
SIM translation stage pos (mm)	-190.132523	-190.1400660498719			
SIM translation stage offset (mm)	0	0.00754346686406393			
Observation start time	196669070.184000	196668038.72006			
Observation start date	2004-03-26T06:16:46	2004-03-26T06:00:38			
Observation end time	196678670.184000	196679189.18305			
Observation end date	2004-03-26T08:56:46	2004-03-26T09:06:29			
Read mode	TIMED	TIMED			

2.3 Aspect



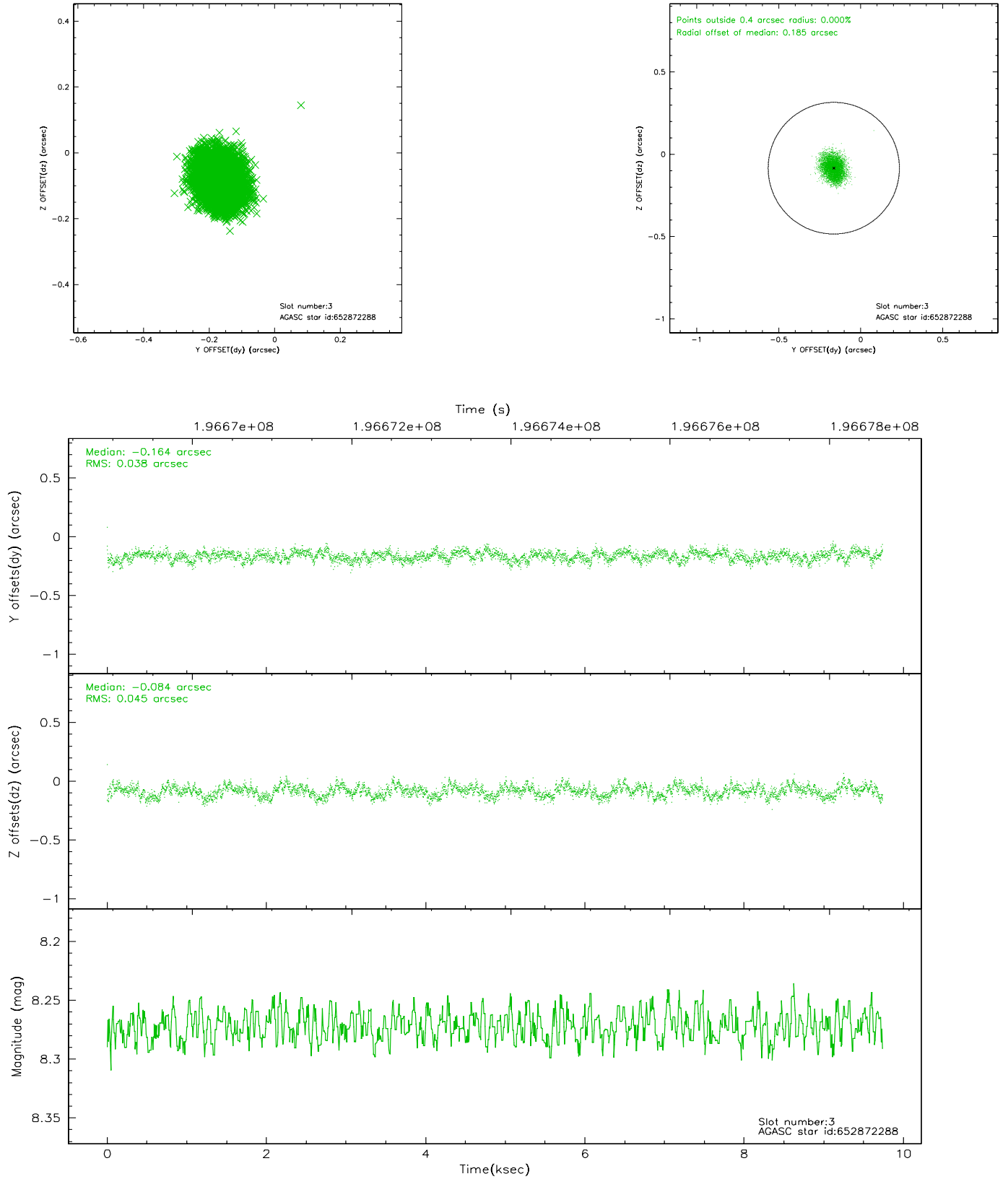


Slot Statistics

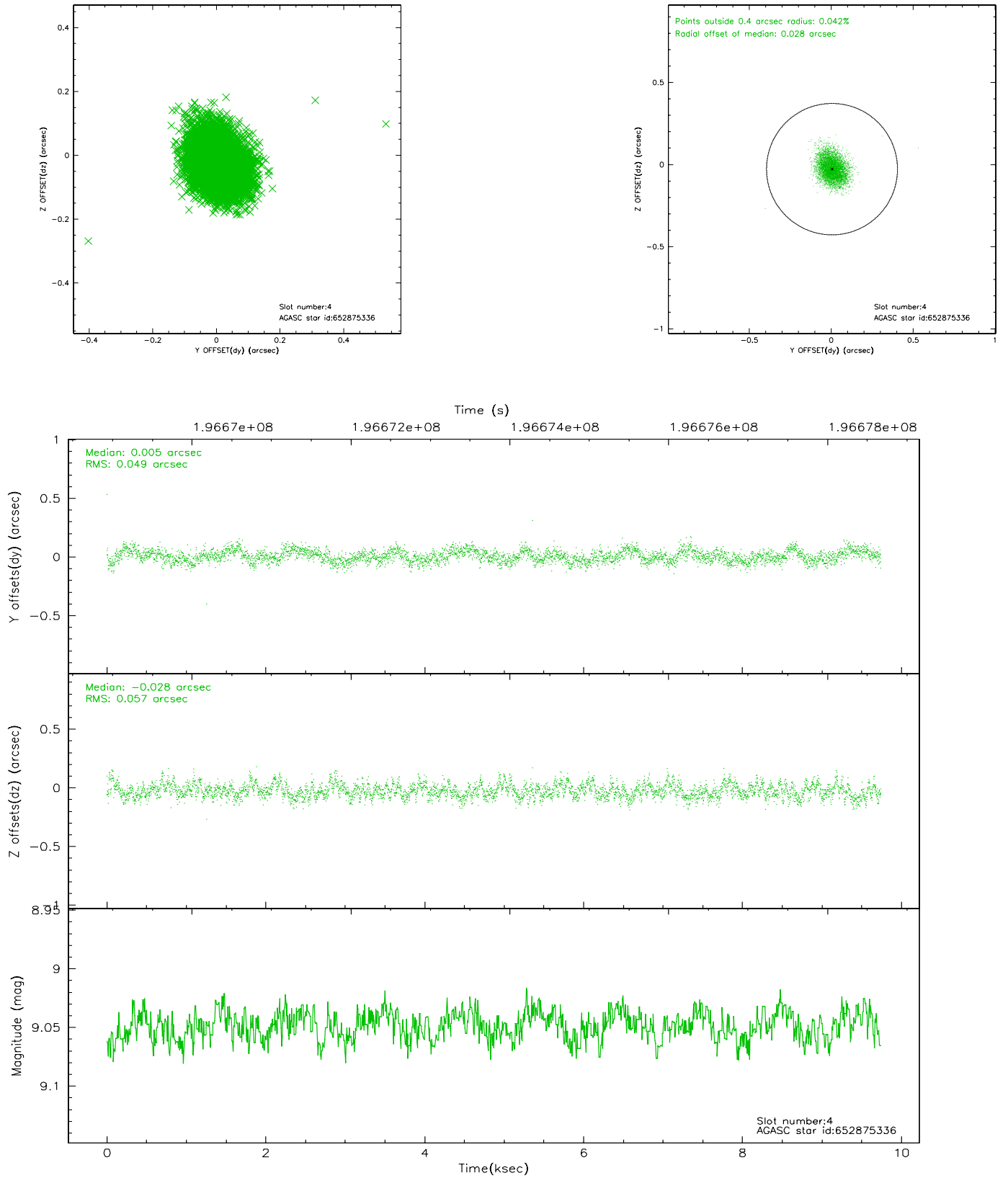
slot	status	id	mag	n_pts	med_dy	med_dz	dr1	dr2	ra	dec	mean_y	mean_z
0	FID	ACIS-S-1	7.18	2377	0.022	-0.031	0.008	0.014	0.000000	0.000000	935.28	-1727.28
1	FID	ACIS-S-5	7.23	2377	-0.044	0.018	0.008	0.014	0.000000	0.000000	-1813.48	169.75
2	FID	ACIS-S-6	7.34	2377	0.001	0.025	0.010	0.017	0.000000	0.000000	400.21	814.35
3	GUIDE	652872288	8.27	4752	-0.164	-0.084	0.064	0.100	210.432093	-5.666348	1156.66	1739.16
4	GUIDE	652875336	9.05	4752	0.005	-0.028	0.080	0.128	211.218548	-6.393524	-1082.18	-1385.50
5	GUIDE	652876744	8.80	4752	-0.045	0.063	0.086	0.131	211.158065	-5.829012	906.01	-914.70
6	GUIDE	652877784	8.24	4752	0.040	-0.161	0.061	0.101	210.274280	-6.471844	-1791.42	1928.61
7	GUIDE	652875048	10.43	4744	0.167	0.211	0.159	0.265	210.860106	-6.702566	-2348.44	-254.48

2.4 Star Slots

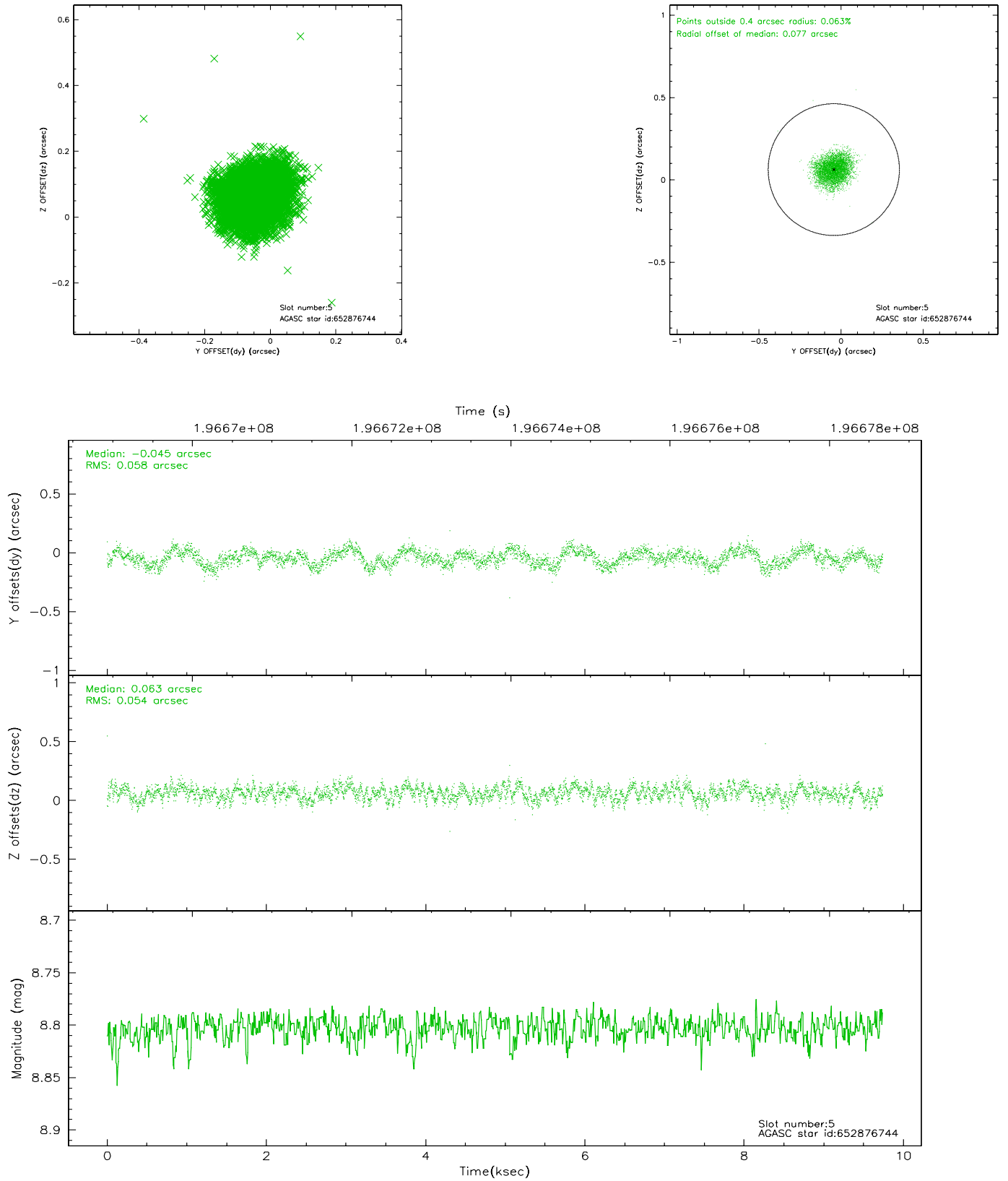
2.4.1 Slot 3



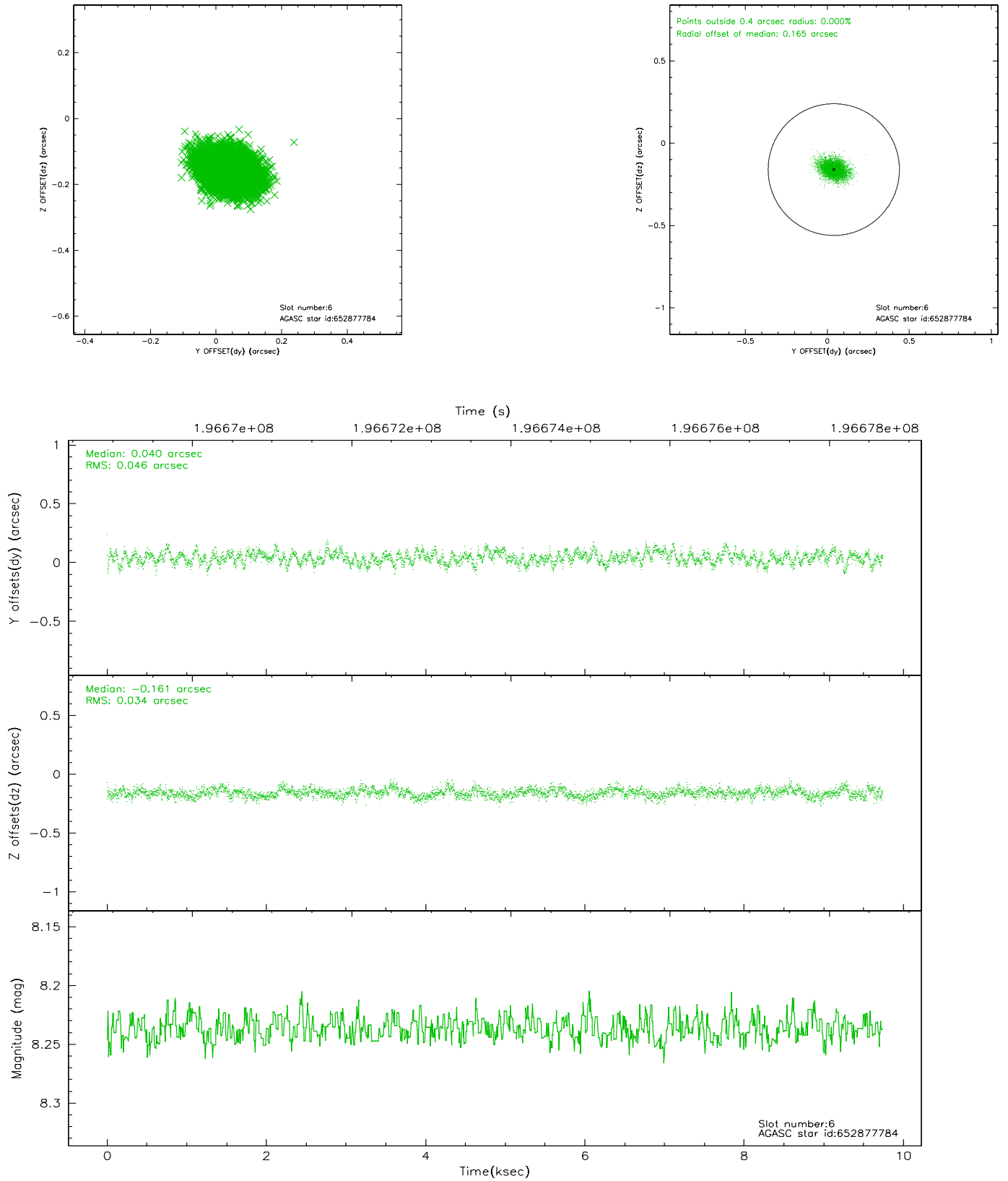
2.4.2 Slot 4



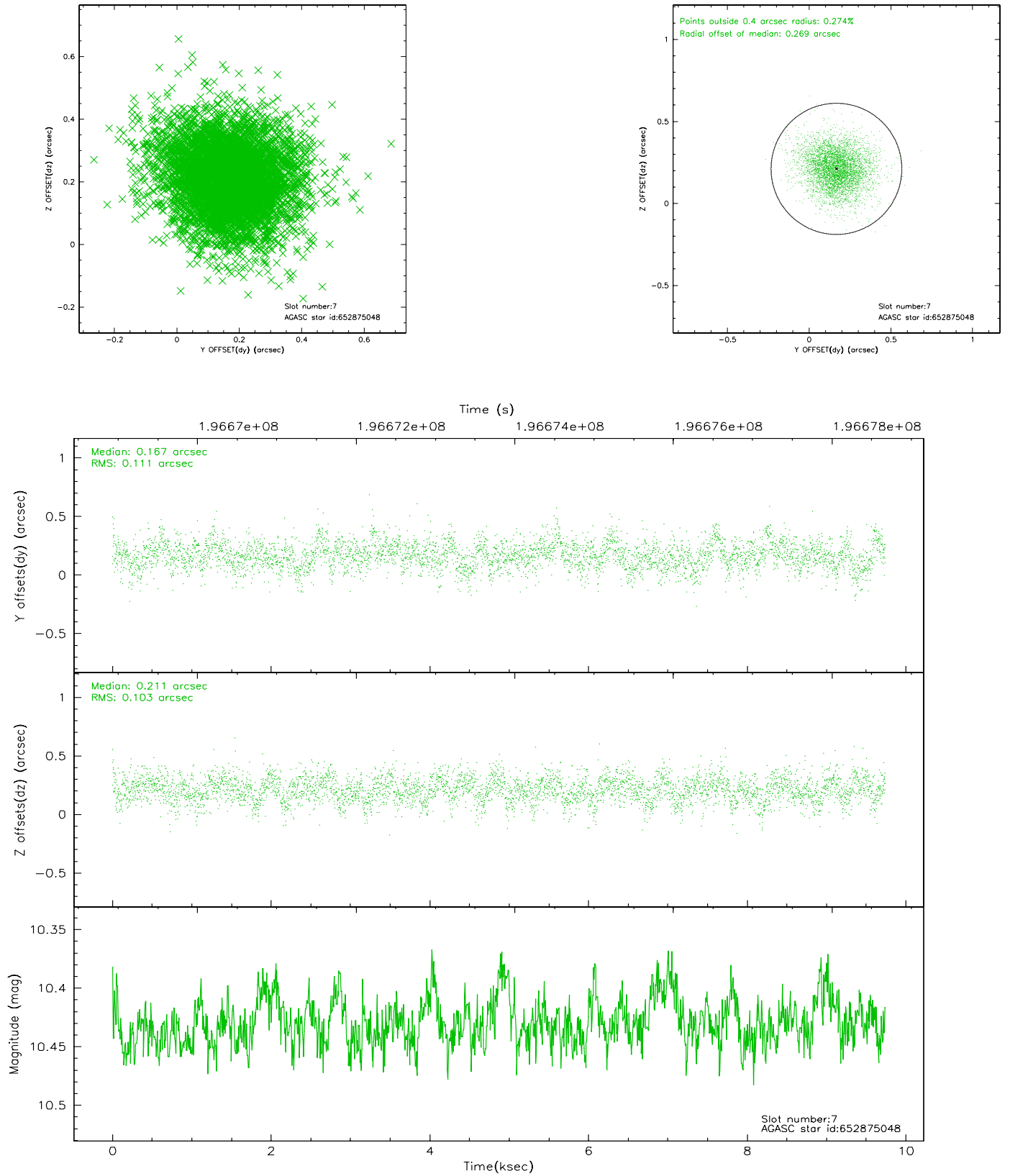
2.4.3 Slot 5



2.4.4 Slot 6

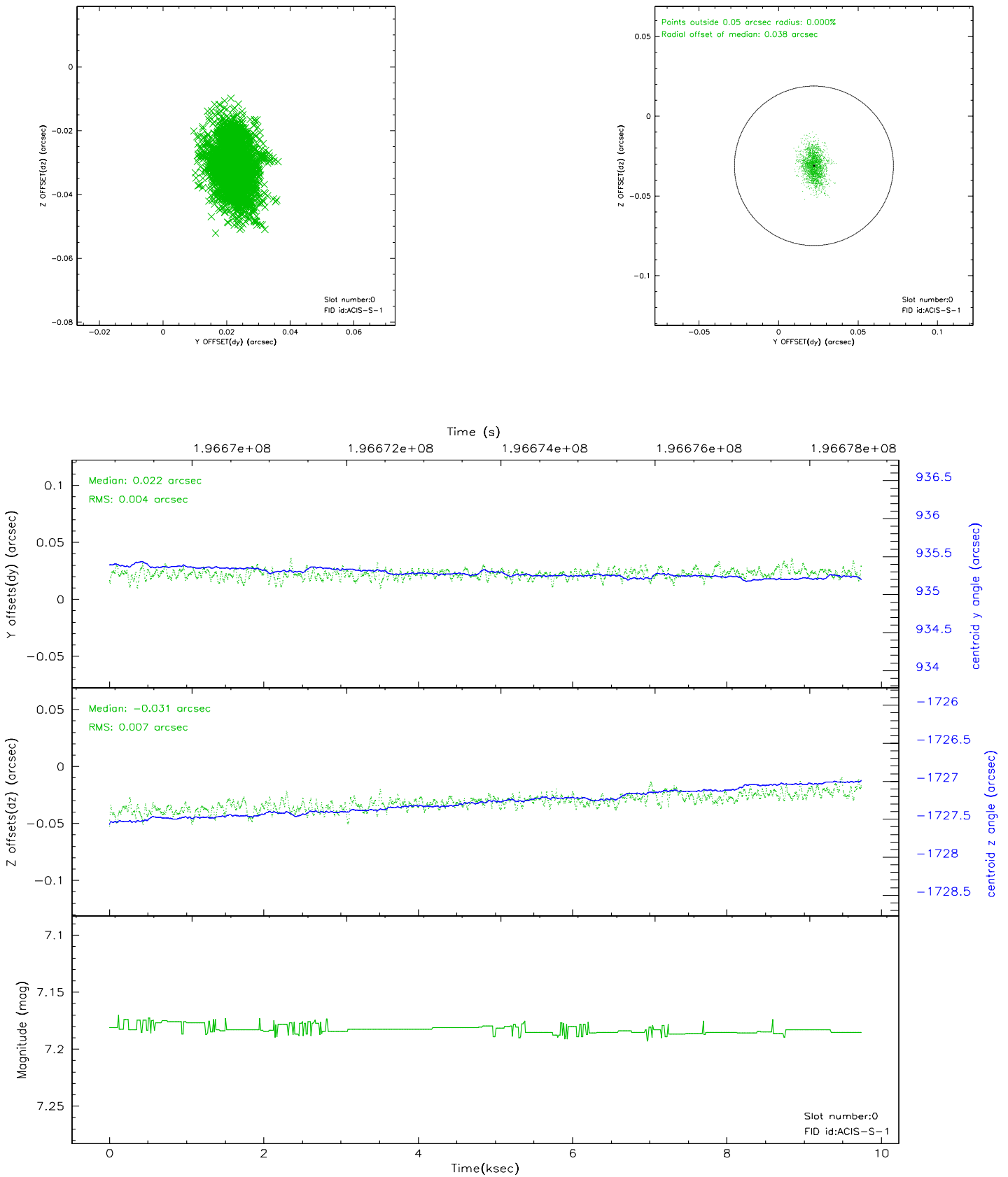


2.4.5 Slot 7

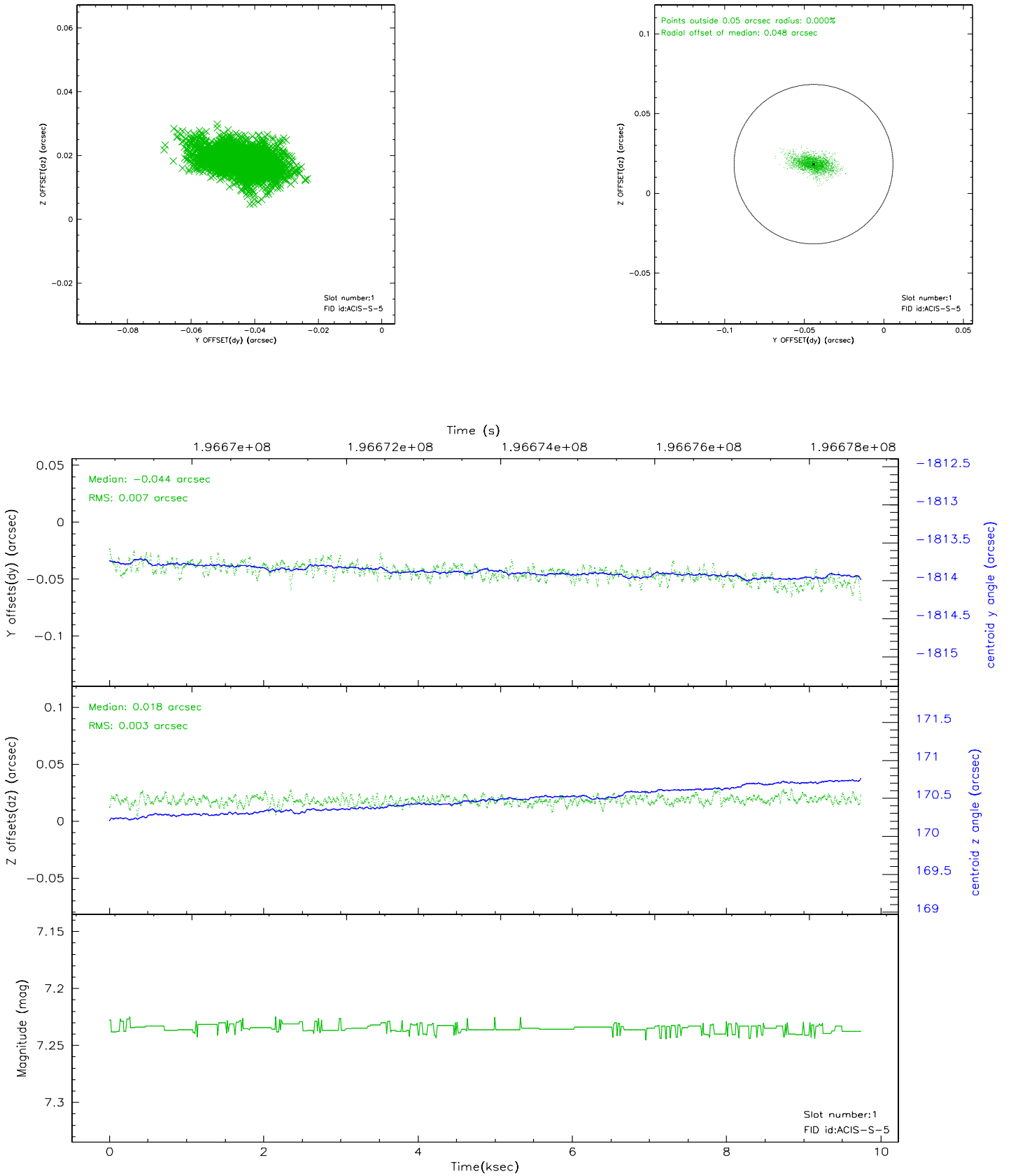


2.5 FID Slots

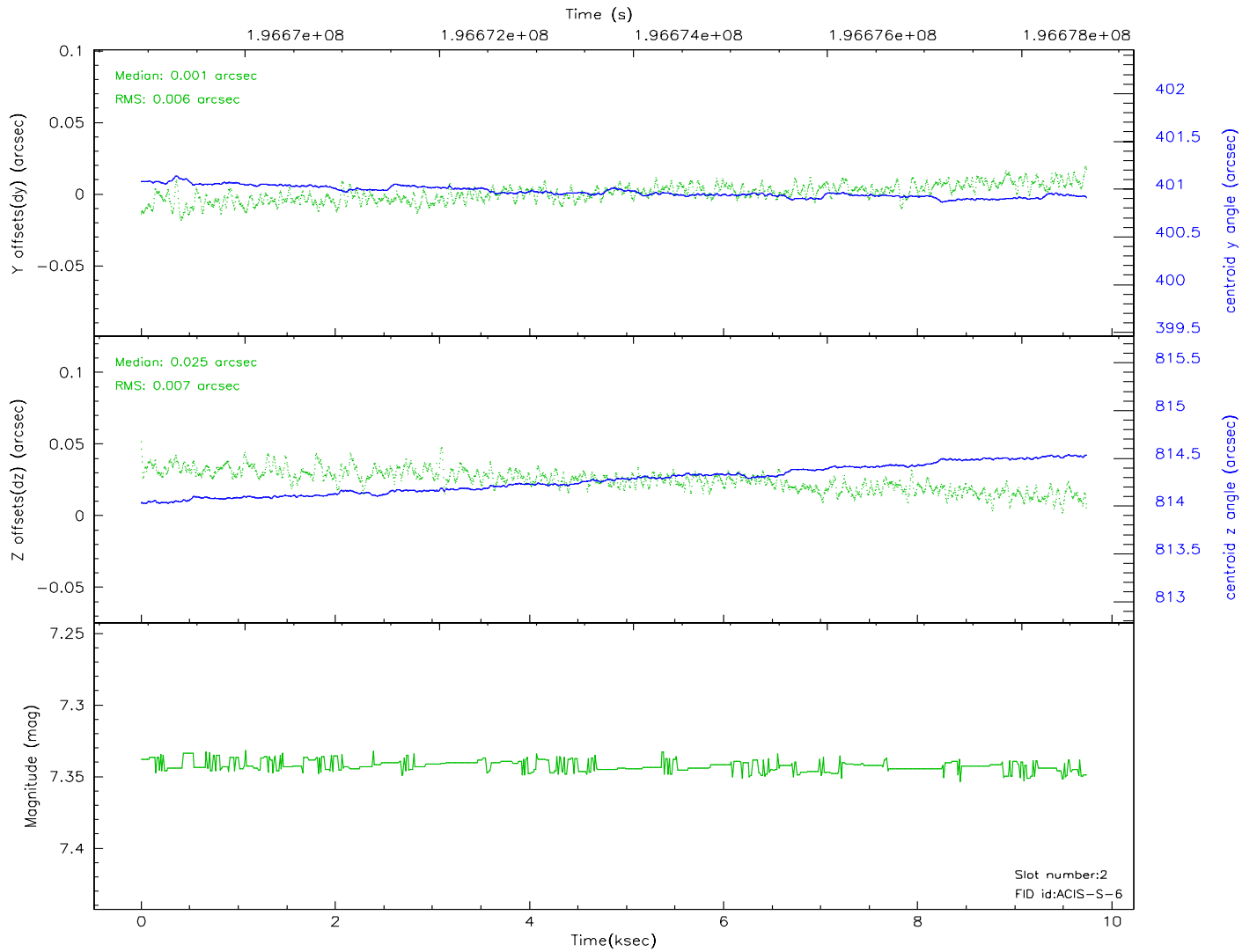
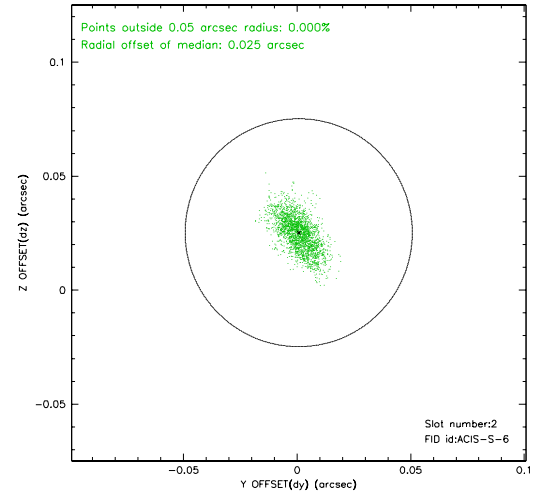
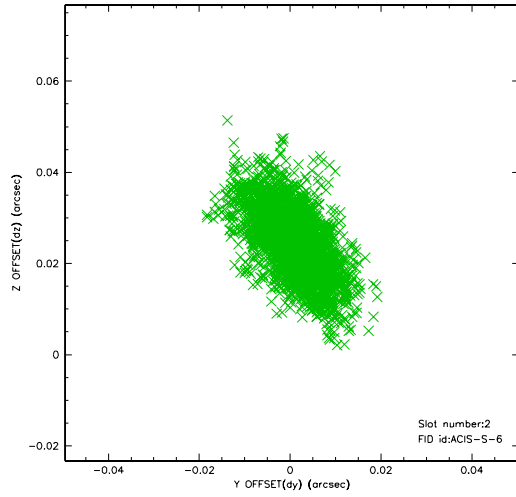
2.5.1 Slot 0



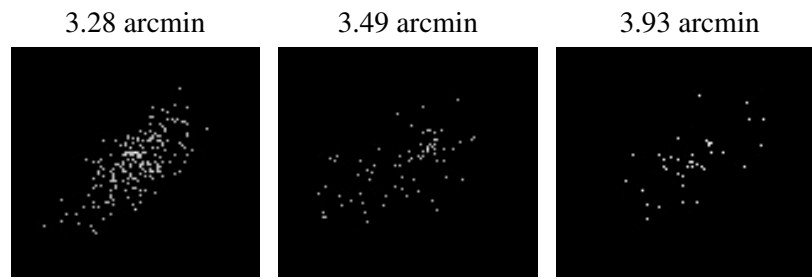
2.5.2 Slot 1



2.5.3 Slot 2



3 Point Sources



A Summary

A.1 Status

V&V Scientist	Beth Sundheim
V&V Date (YYYY-MM-DD)	2006.05.30
V&V Edition	1
V&V Disposition and Status	OK
V&V Charge Time	9.74

A.2 Comments