

V&V Reference Report

L2 ASCDS Version : 8.4.5

Observation 4846 - L2 Version 3
Chandra X-Ray Center

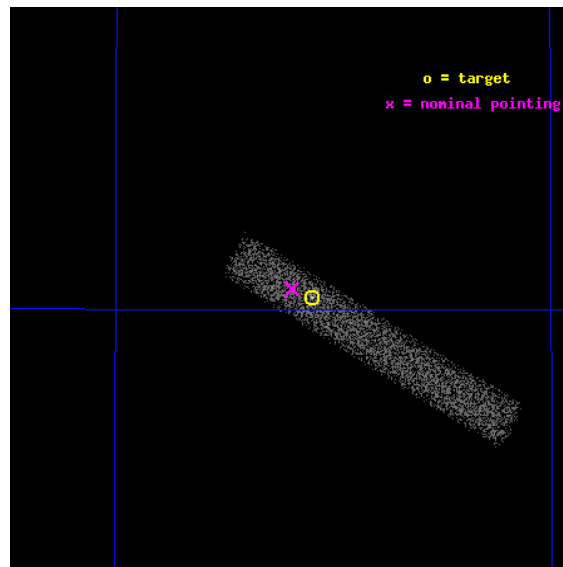
L2 Processing Date : Nov 8 2012

Contents

1	Front	2
2	OBI	3
2.1	OBI	3
2.1.1	Images	3
2.1.2	Bias	3
2.1.3	Parameters	4
2.1.4	Events	4
2.2	Compared Parameters	5
2.3	Aspect	6
2.4	Star Slots	9
2.4.1	Slot 3	9
2.4.2	Slot 4	10
2.4.3	Slot 5	11
2.4.4	Slot 6	12
2.4.5	Slot 7	13
2.5	FID Slots	14
2.5.1	Slot 0	14
2.5.2	Slot 1	15
2.5.3	Slot 2	16
A	Summary	17
A.1	Status	17
A.2	Comments	17

1 Front

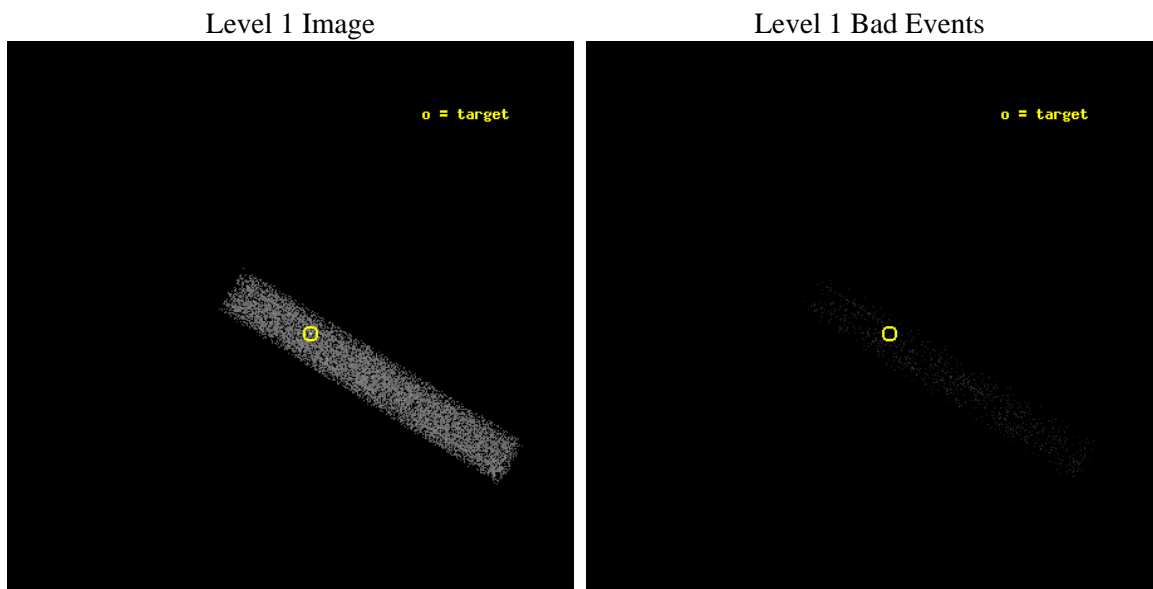
seq_num	700928	Sequence number
obs_id	4846	Observation id
title	Are there any true Seyfert 2 nuclei?	Proposal title
observer	Prof RICHARD POGGE	Principal investigator
object	NGC 5283	Source name
dtcycle	0	
cycle	P	events from which exps? Prim/Second/Both
ra_targ	205.27375	Observer's specified target RA [deg]
dec_targ	67.672222	Observer's specified target Dec [deg]
ra_nom	205.29739638294	Nominal RA [deg]
dec_nom	67.675791580767	Nominal Dec [deg]
roll_nom	31.659275266935	Nominal Roll [deg]
revision	3	Processing version of data
ontime	9822.8001463413	Sum of GTIs [s]
liveltime	8908.7612428273	Livetime [s]
ontime7	9822.8001463413	Sum of GTIs [s]
l2events	7364	Number of level 2 events



2 OBI

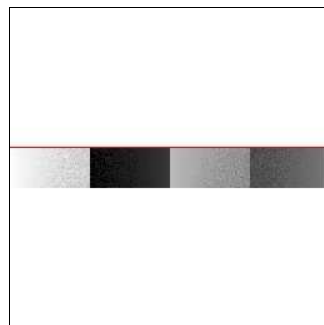
2.1 OBI

2.1.1 Images



2.1.2 Bias

Chip 7



2.1.3 Parameters

obi_num	1	Obi number	sched_exp_time	9745.291000	[s] Scheduled observation exposure time
ascdsver	8.4.5	Processing system revision	ontime	9822.8001463413	Sum of GTIs [s]
caldsver	4.5.2	 	ontime7	9822.8001463413	Sum of GTIs [s]
date	2012-11-08T02:31:51	Date and time of file creation	l1events	15557	Number of level 1 events
revision	3	Processing version of data			

2.1.4 Events

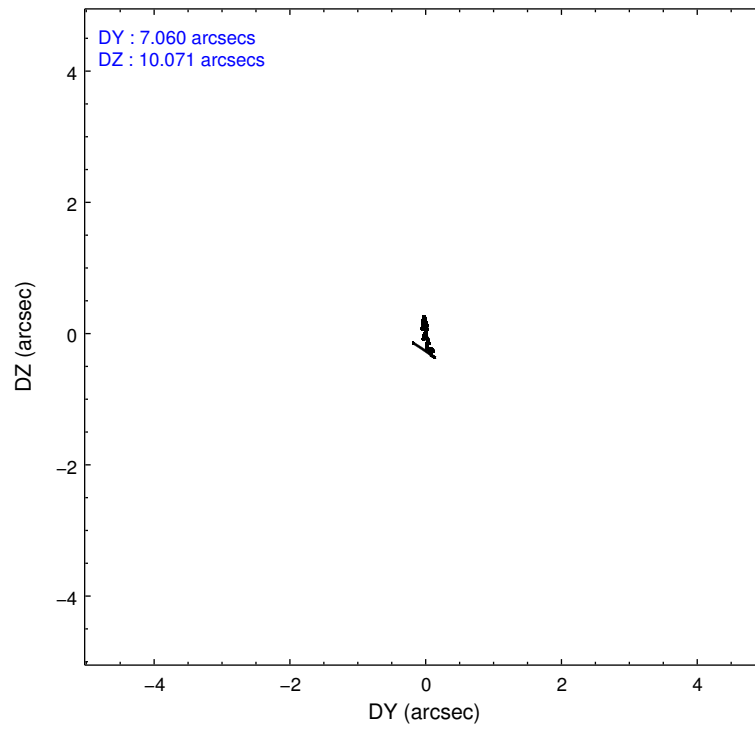
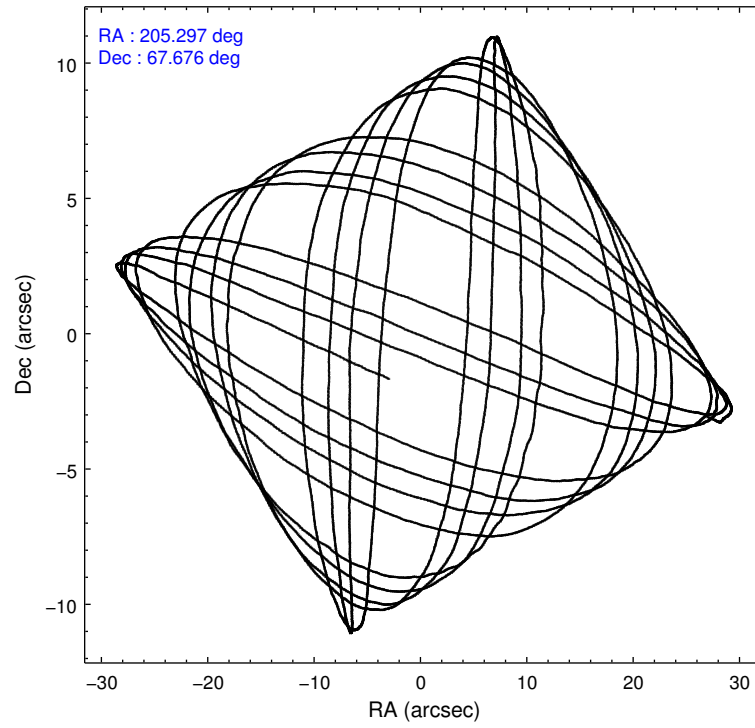
	ccd 7
level 1 events	15557
rejected events	7982
rejected %	51%

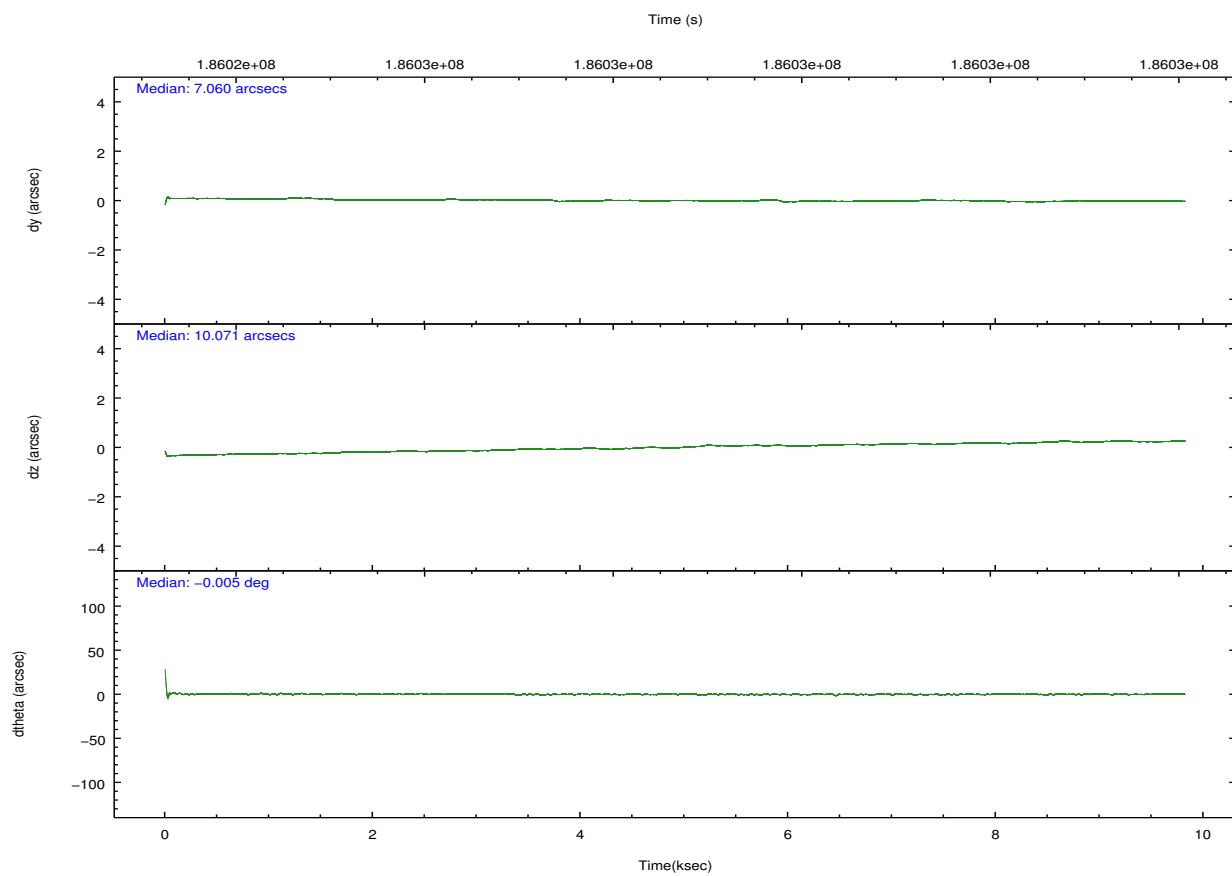
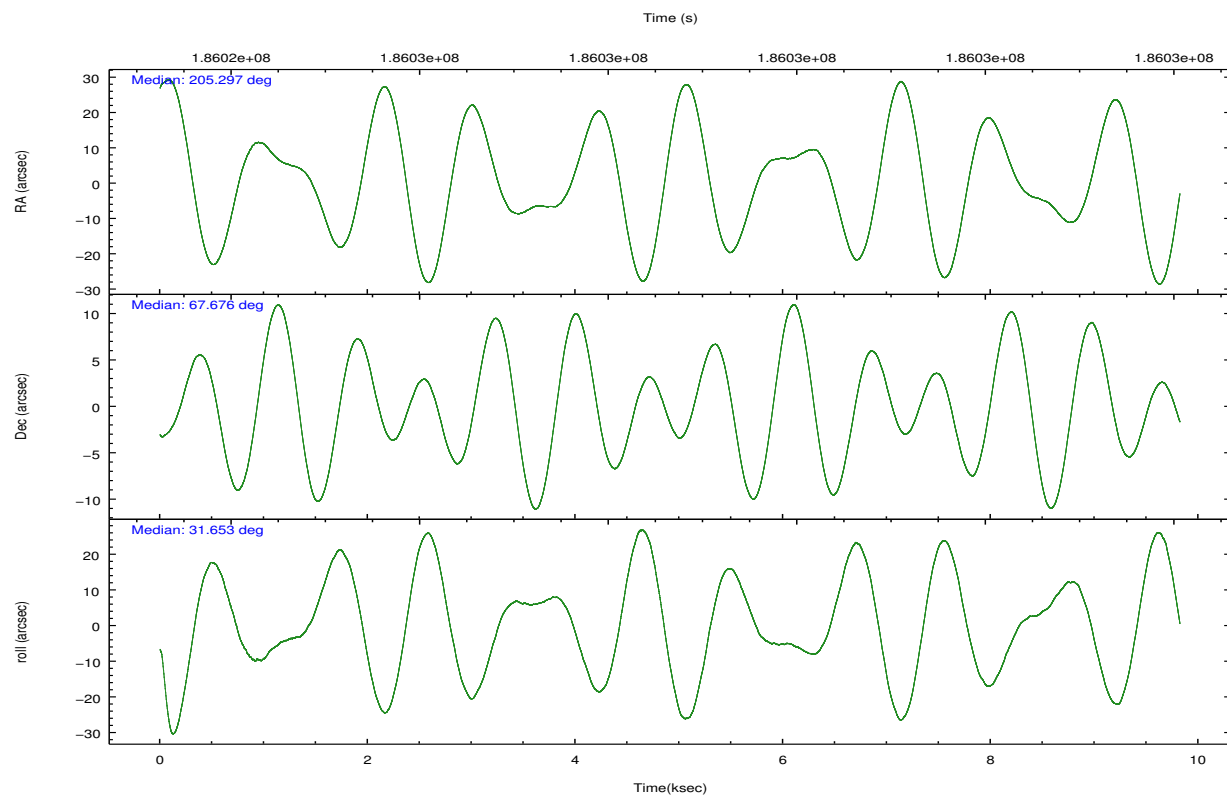
	ccd 7
grade 0 events	1465
	9%
grade 1 events	18
	0%
grade 2 events	1917
	12%
grade 3 events	1061
	6%
grade 4 events	1034
	6%
grade 5 events	961
	6%
grade 6 events	4493
	28%
grade 7 events	4608
	29%

2.2 Compared Parameters

Parameter	Planned	Actual	Parameter	Planned	Actual
Instrument	ACIS	ACIS	Obspar format version number	7	7
Detector	ACIS-7	ACIS-7	Obspar file type	PREDICTED	ACTUAL
Grating	NONE	NONE	Obspar update status	NONE	UPDATED
Data mode	FAINT	FAINT	Number of optional ACIS chips dropped	0	0
Observation mode	POINTING	POINTING	On-chip summing requested	N	N
[deg] Pointing RA	205.264285	205.2973963829409	Subarray requested	CUSTOM	1/8
[deg] Pointing Dec	67.651624	67.67579158076681	Subarray start row	449	449
[deg] Pointing Roll	31.533276	31.65927526693503	Subarray row count	128	128
[mm] SIM focus pos	-0.684267	-0.6828225247311905	Alternating exposures requested	N	N
[mm] SIM defocus	0	0.001444936568705701	[s] Primary exposure time	0.000000	0.4
[mm] SIM translation stage pos	-190.132523	-190.1400660498719			
[mm] SIM translation stage offset	0	0.00754346686406393			
[s] Observation start time (MET)	186023827.184000	186022865.39308			
Observation start date	2003-11-24T01:16:03	2003-11-24T01:01:05			
[s] Observation end time (MET)	186033573.184000	186034397.15608			
Observation end date	2003-11-24T03:58:29	2003-11-24T04:13:17			
Read mode	TIMED	TIMED			

2.3 Aspect



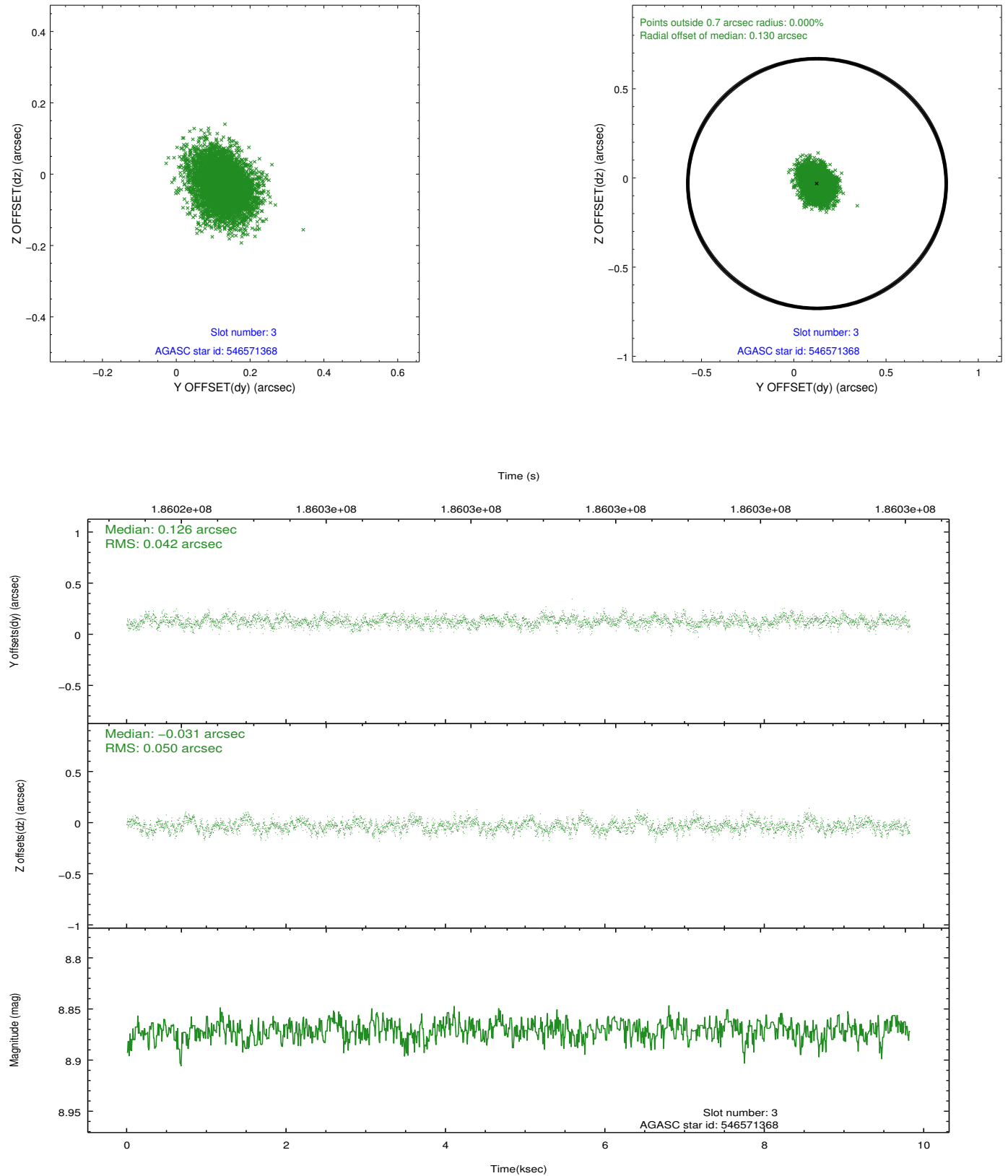


Slot Statistics

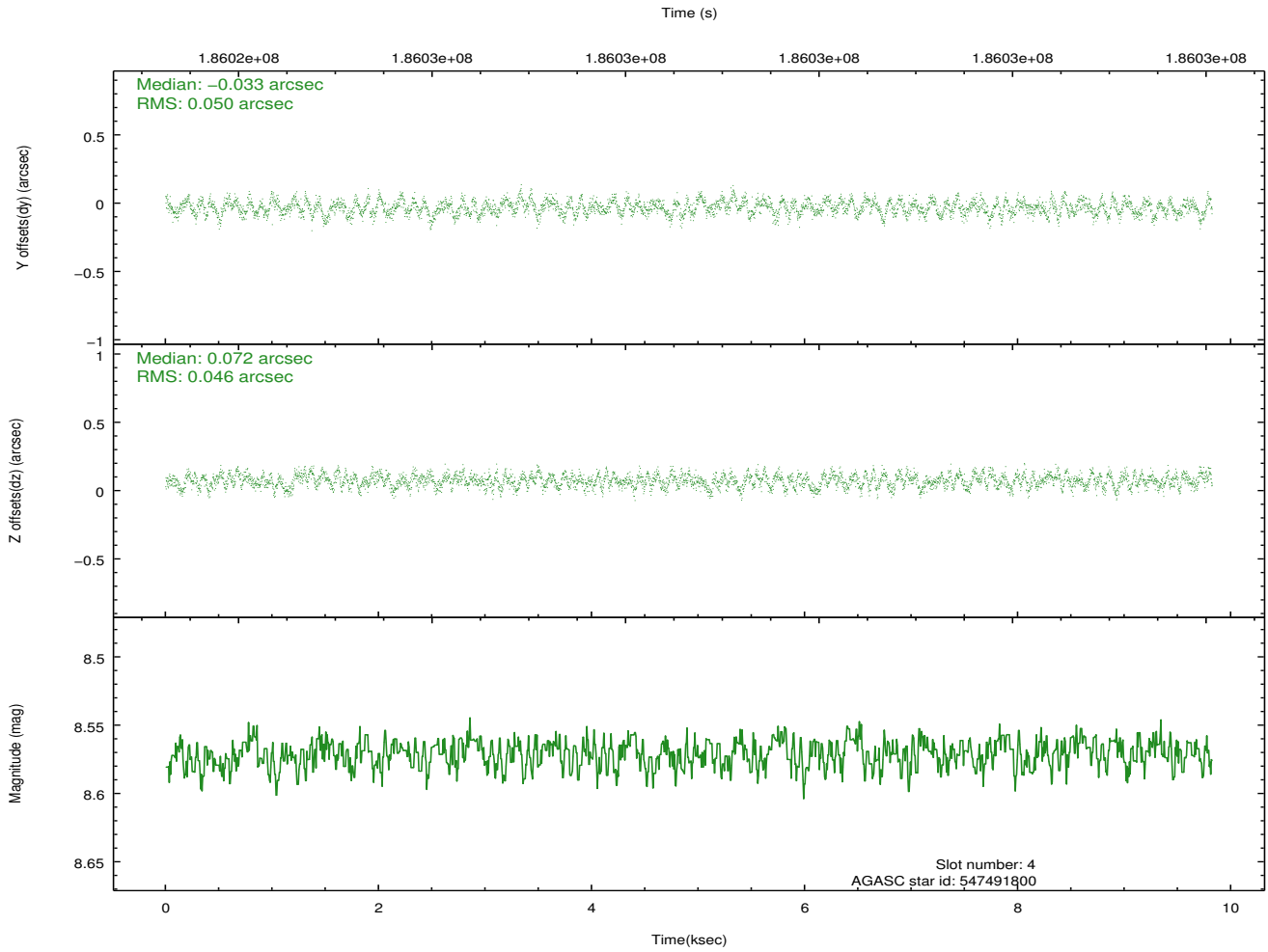
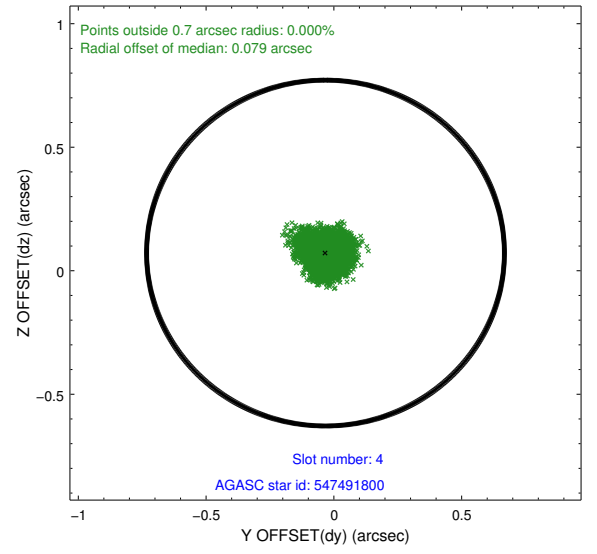
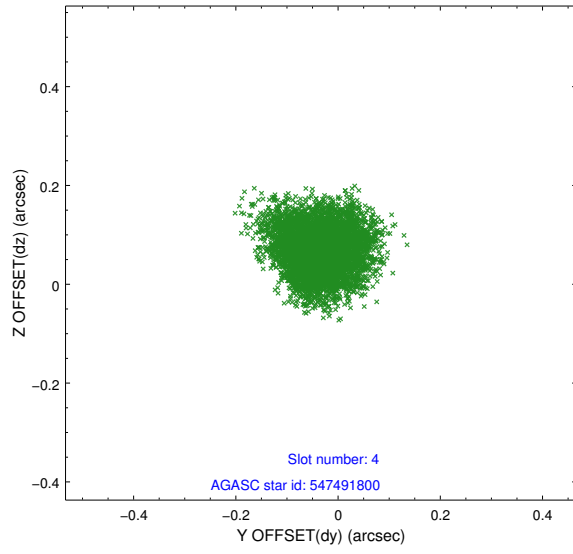
slot	status	id	mag	n_pts	med_dy	med_dz	dr1	dr2	ra	dec	mean_y	mean_z
0	FID	ACIS-S-2	7.10	2396	-0.049	-0.009	0.008	0.013	0.000000	0.000000	-759.84	-1731.33
1	FID	ACIS-S-4	7.20	2396	0.068	0.026	0.006	0.010	0.000000	0.000000	2153.28	176.68
2	FID	ACIS-S-5	7.23	2396	-0.050	-0.009	0.008	0.013	0.000000	0.000000	-1812.02	170.86
3	GUIDE	546571368	8.87	4792	0.126	-0.031	0.070	0.114	204.637916	67.190739	-1609.89	-953.39
4	GUIDE	547491800	8.57	4791	-0.033	0.072	0.074	0.114	206.811522	67.372407	1315.04	-1954.77
5	GUIDE	547493512	8.80	4793	-0.098	0.116	0.061	0.098	206.454377	67.283994	726.96	-1979.88
6	GUIDE	576980152	9.51	4787	0.073	0.015	0.094	0.154	206.099139	67.510638	719.09	-1027.45
7	GUIDE	576991304	9.44	4791	-0.067	-0.167	0.089	0.141	205.647787	68.411012	1863.88	2065.80

2.4 Star Slots

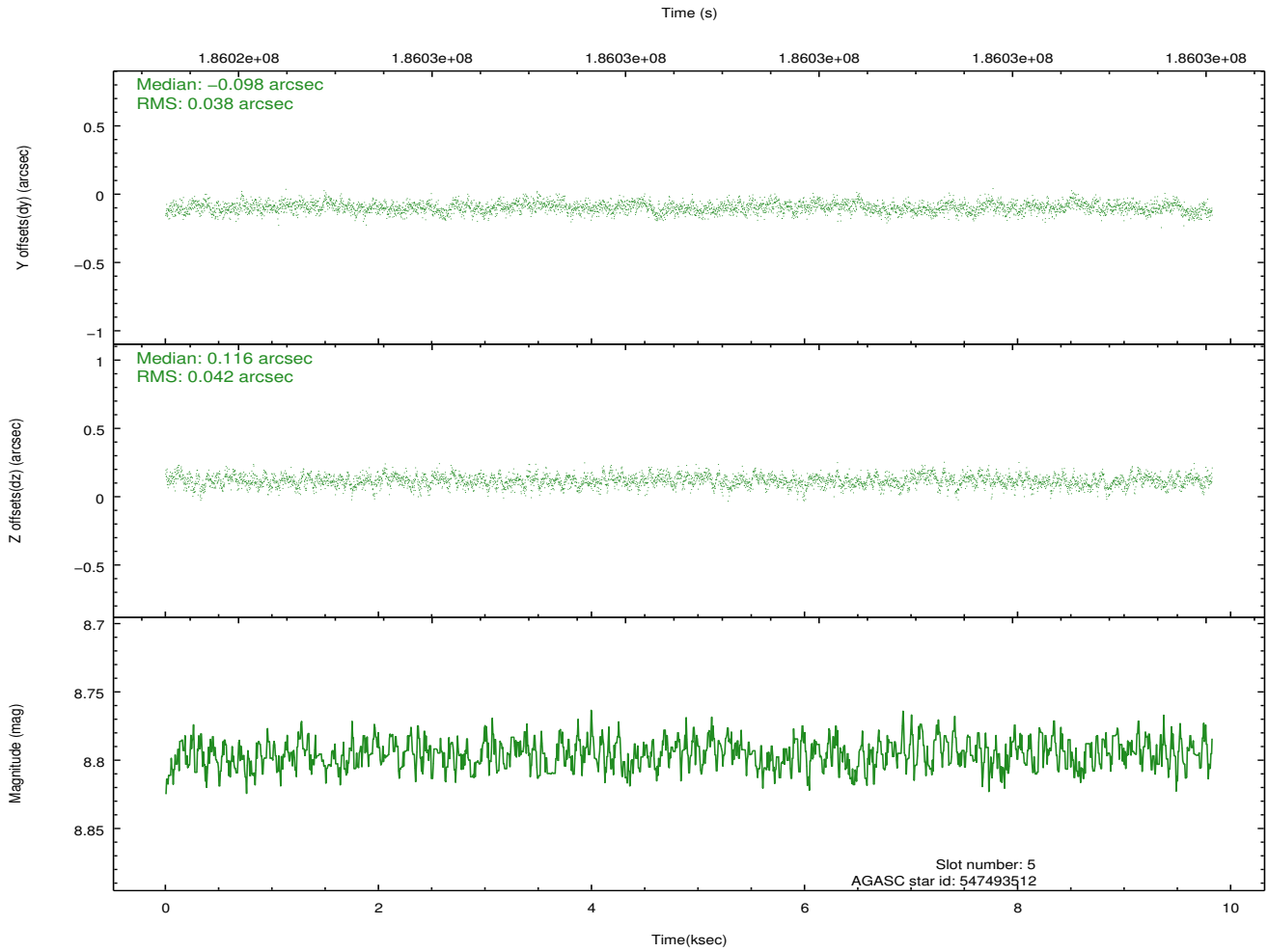
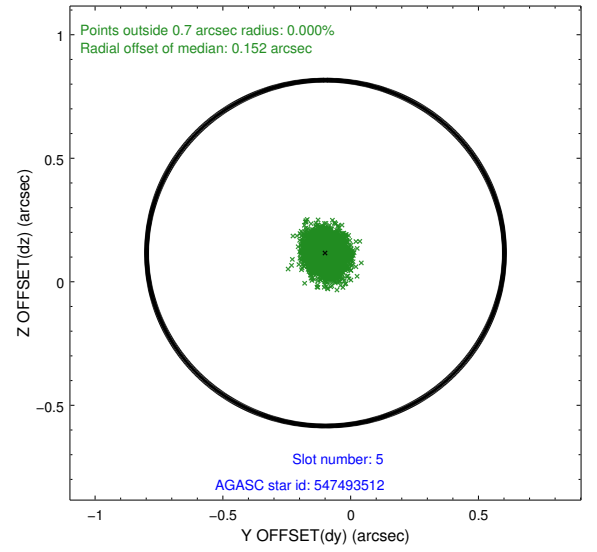
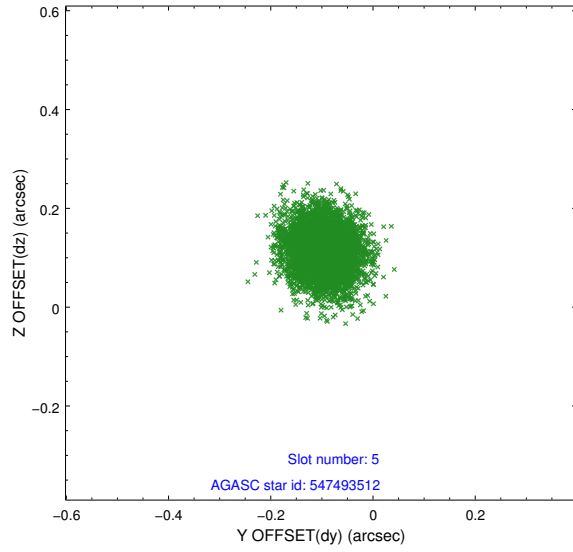
2.4.1 Slot 3



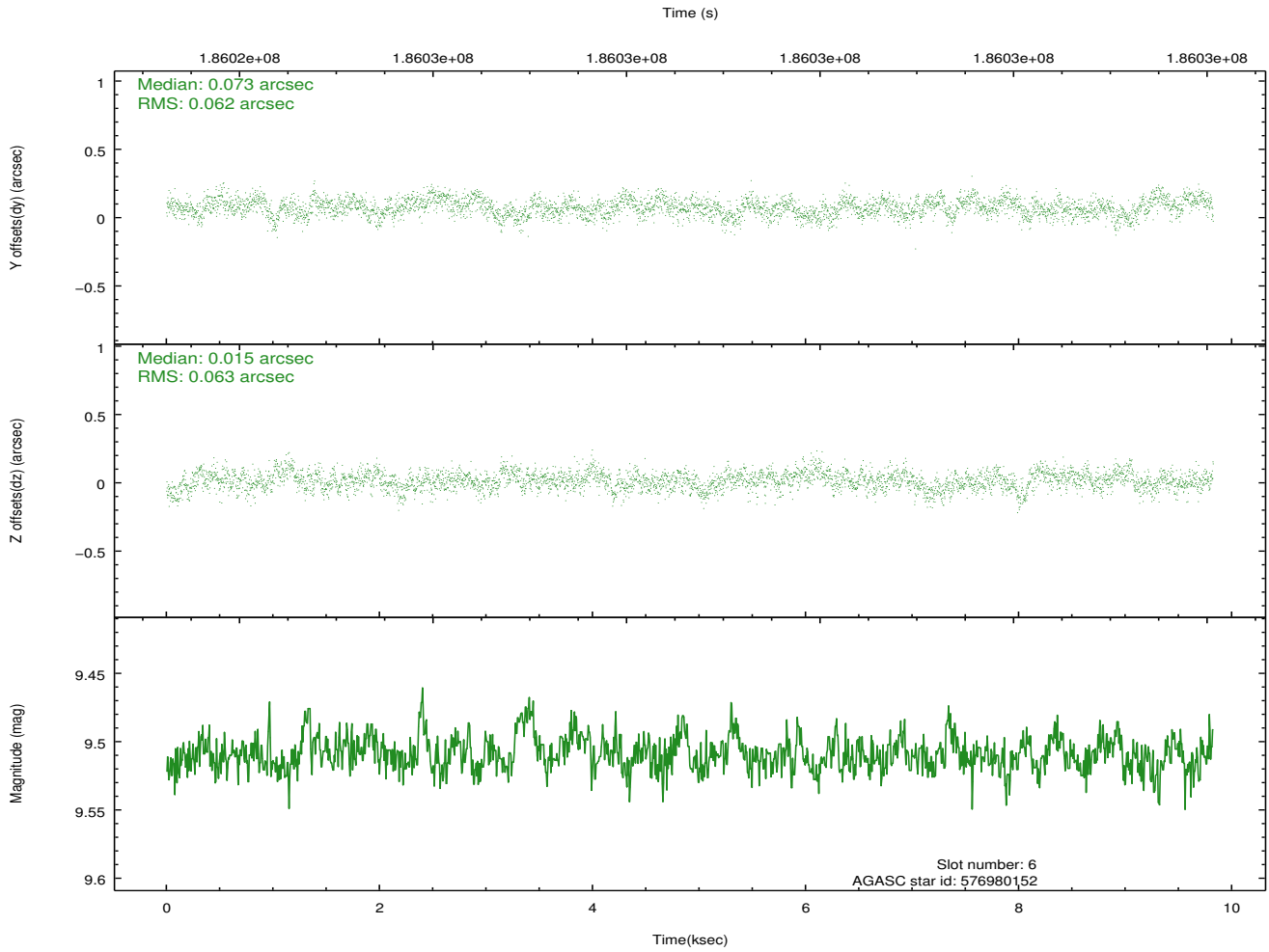
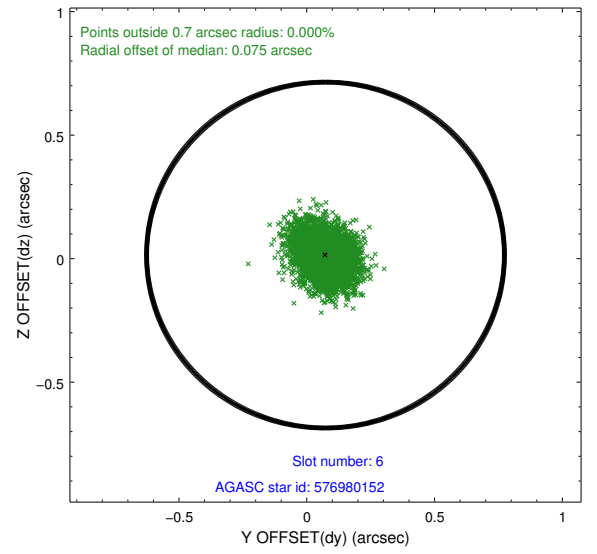
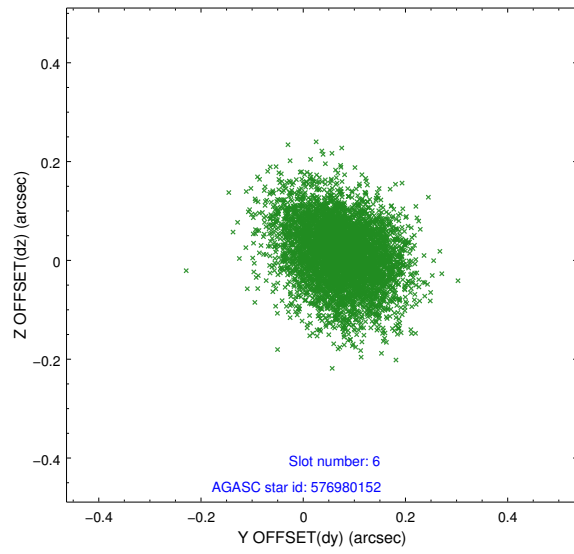
2.4.2 Slot 4



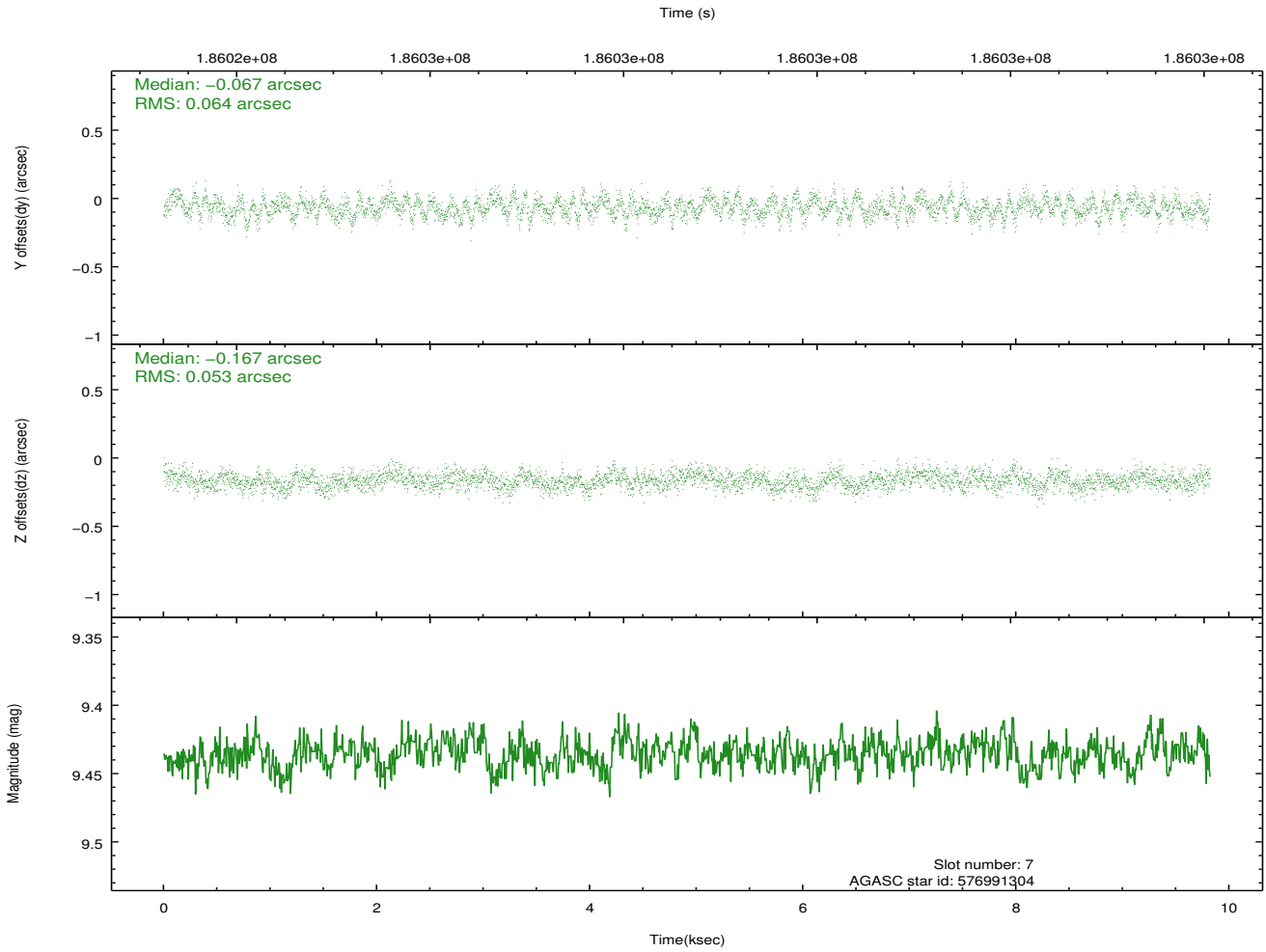
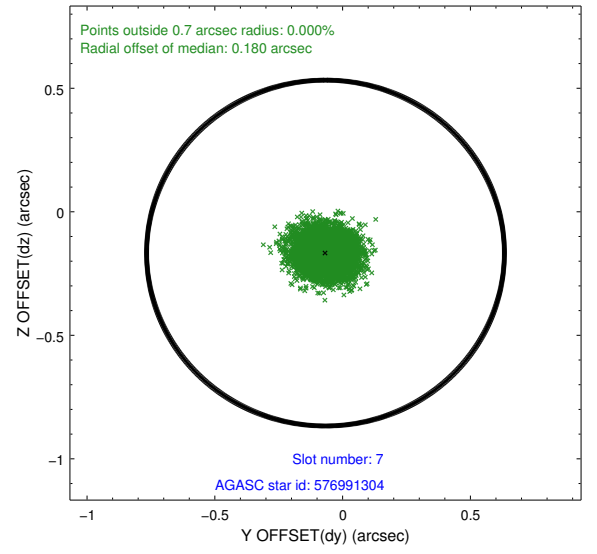
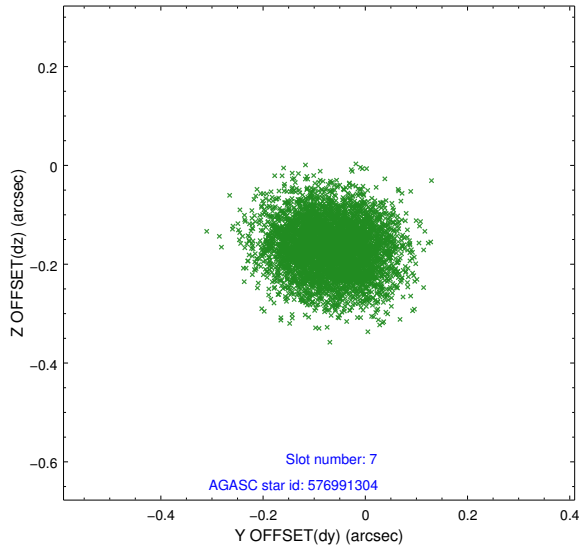
2.4.3 Slot 5



2.4.4 Slot 6

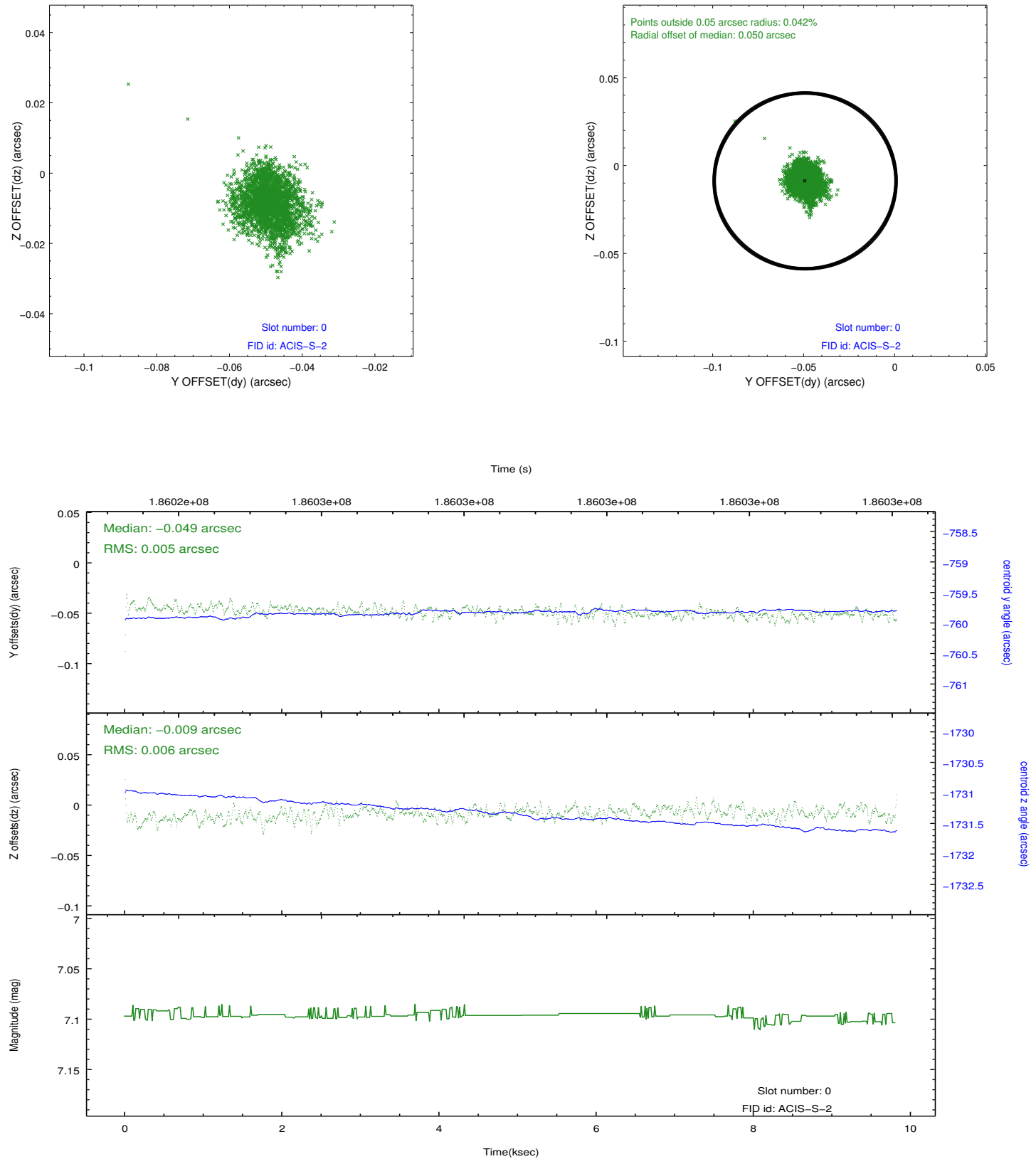


2.4.5 Slot 7

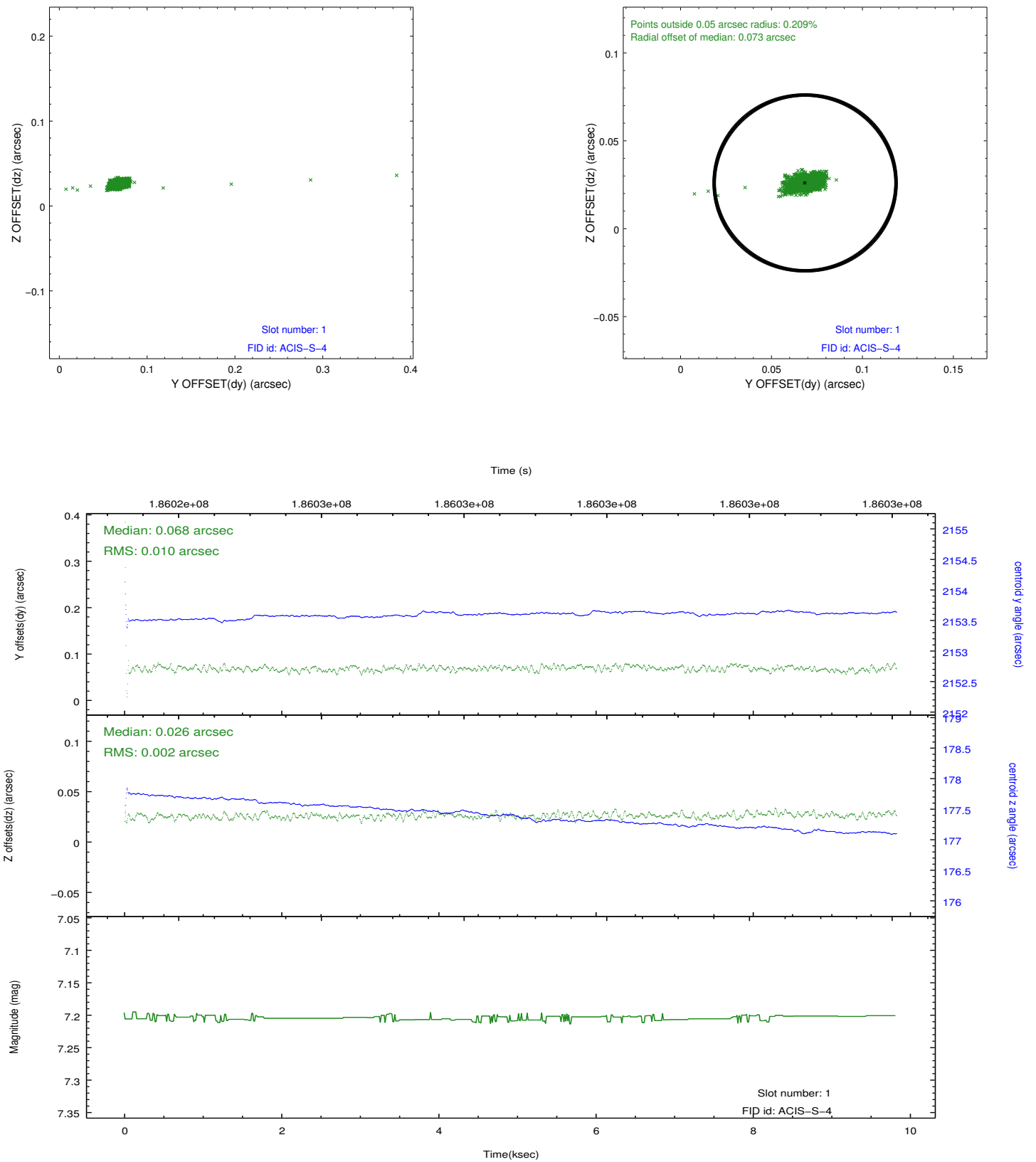


2.5 FID Slots

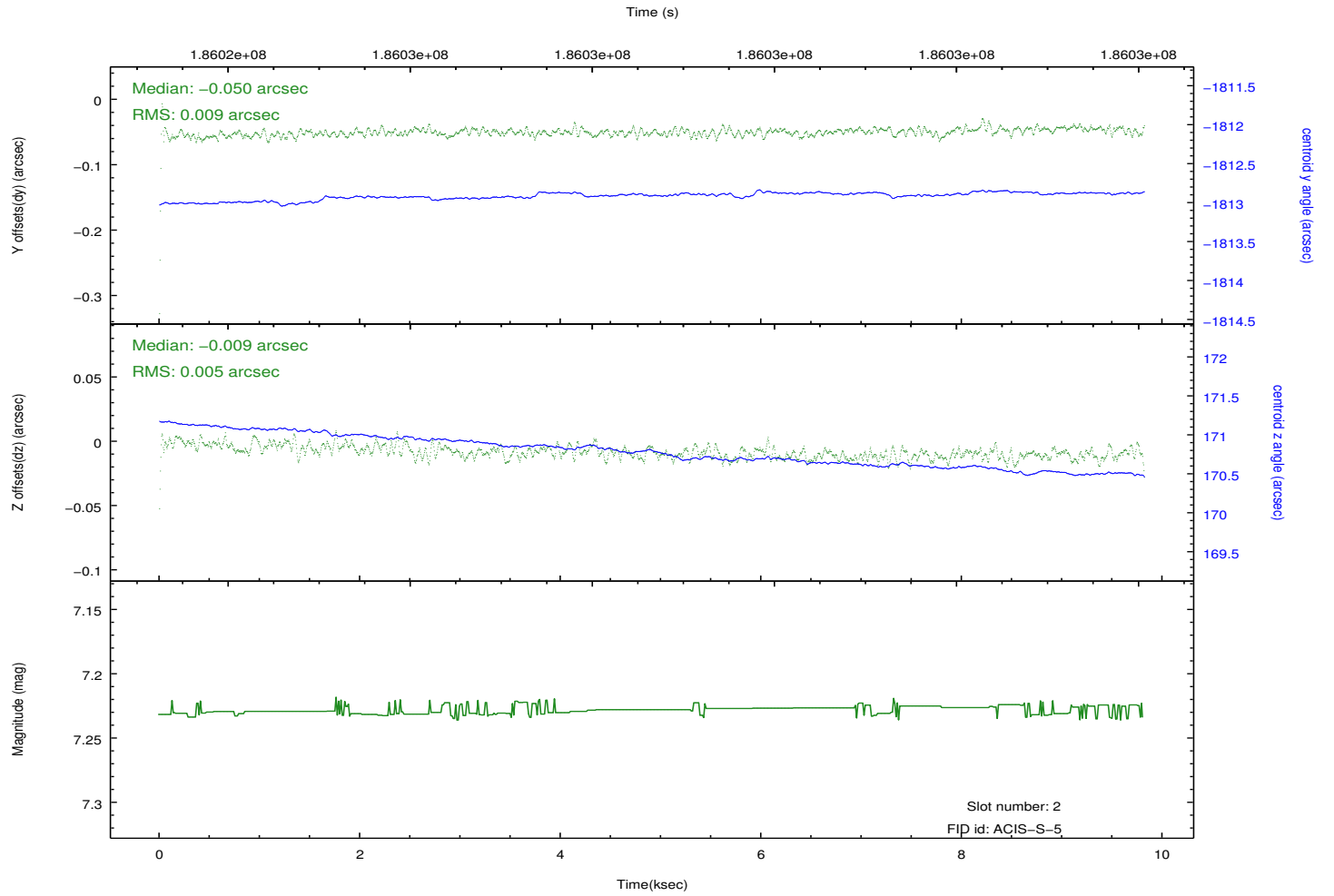
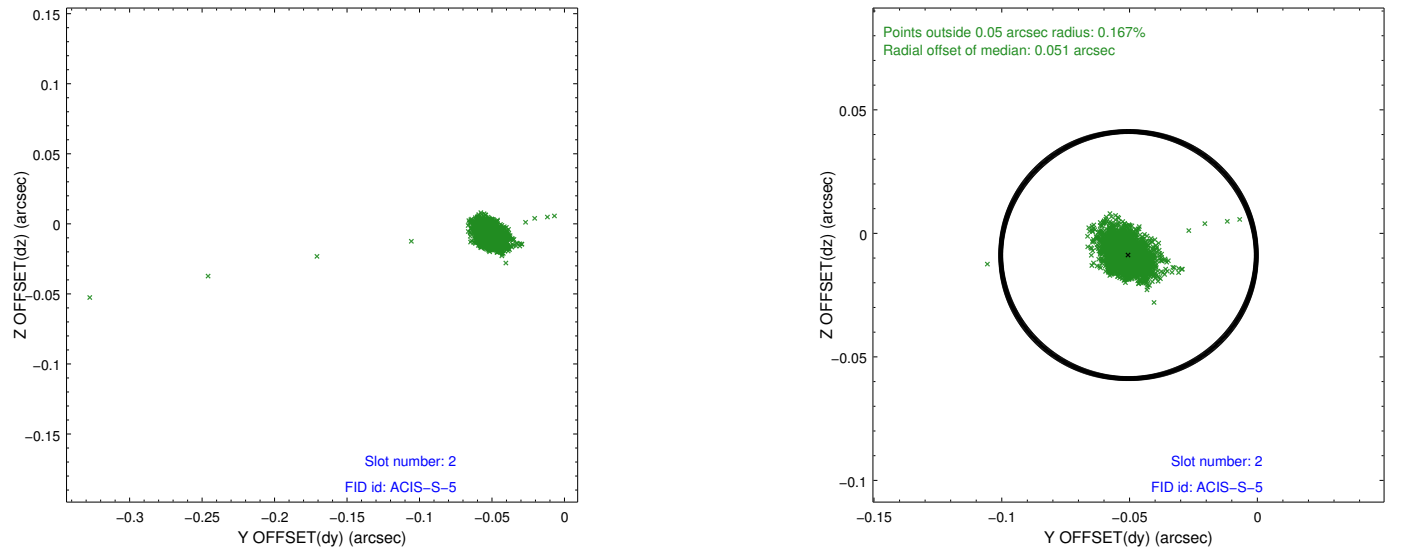
2.5.1 Slot 0



2.5.2 Slot 1



2.5.3 Slot 2



A Summary

A.1 Status

V&V Scientist	Jen Lauer
V&V Date (YYYY-MM-DD)	2012.12.02
V&V Edition	1
V&V Disposition and Status	OK
V&V Charge Time	9.822

A.2 Comments