

V&V Reference Report

L2 ASCDS Version : 7.6.8

Observation 4846 - L2 Version 001
Chandra X-Ray Center

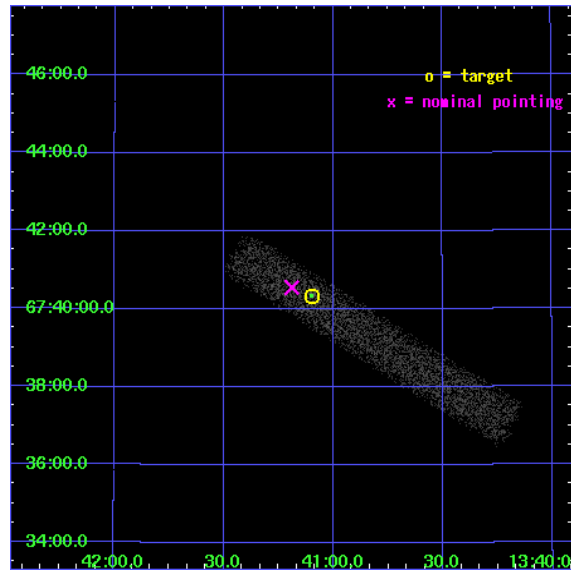
L2 Processing Date : Jun 26 2006

Contents

1	Front	2
2	OBI	3
2.1	OBI	3
2.1.1	Images	3
2.1.2	Bias	3
2.1.3	Parameters	4
2.1.4	Events	4
2.2	Compared Parameters	5
2.3	Aspect	6
2.4	Star Slots	9
2.4.1	Slot 3	9
2.4.2	Slot 4	10
2.4.3	Slot 5	11
2.4.4	Slot 6	12
2.4.5	Slot 7	13
2.5	FID Slots	14
2.5.1	Slot 0	14
2.5.2	Slot 1	15
2.5.3	Slot 2	16
3	Point Sources	17
A	Summary	18
A.1	Status	18
A.2	Comments	18

1 Front

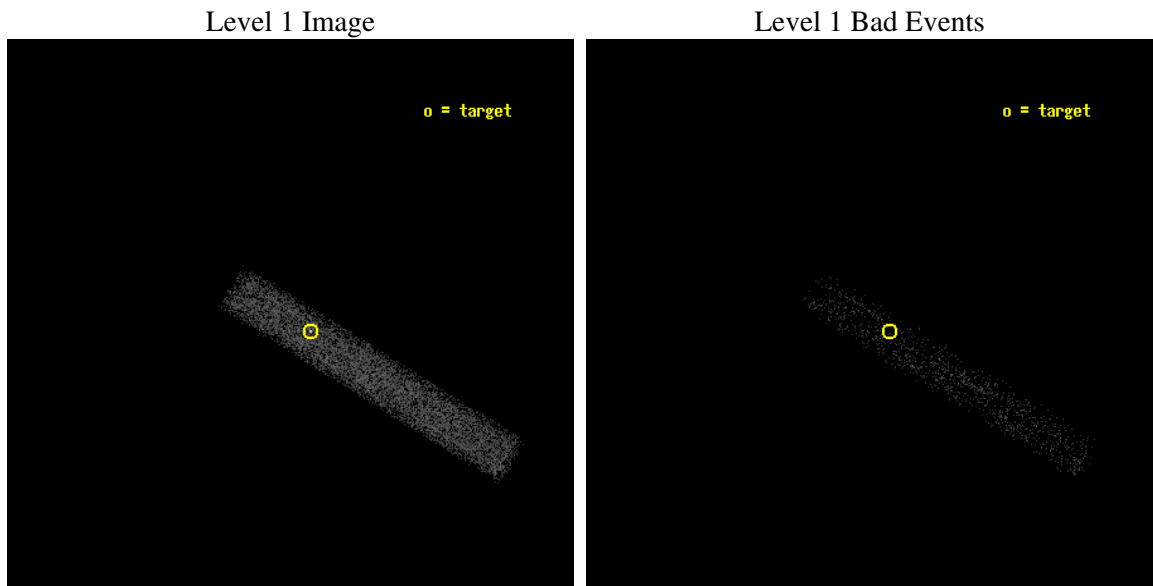
seq_num	700928
obs_id	4846
title	Are there any true Seyfert 2 nuclei?
observer	Prof RICHARD POGGE
object	NGC 5283
dtcycle	0
cycle	P
ra_targ	205.27375
dec_targ	67.672222
ra_nom	205.29733404128
dec_nom	67.675777052027
roll_nom	31.659332947578
revision	2
ontime	9822.8001463711
livetime	8908.7612428543
ontime7	9822.8001463711
l2events	6906



2 OBI

2.1 OBI

2.1.1 Images



2.1.2 Bias

Chip 7



2.1.3 Parameters

obi_num	1
ascdsver	7.6.8
caldbver	3.2.2
date	2006-06-26T16:58:20
revision	2

sched_exp_time	9745.291000
ontime	10708.328763694
ontime7	10708.328763694
l1events	15557

2.1.4 Events

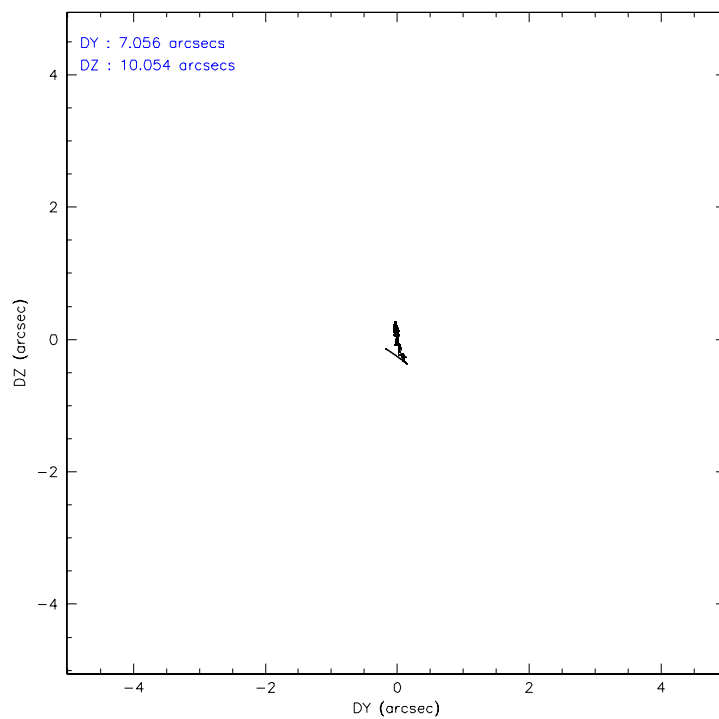
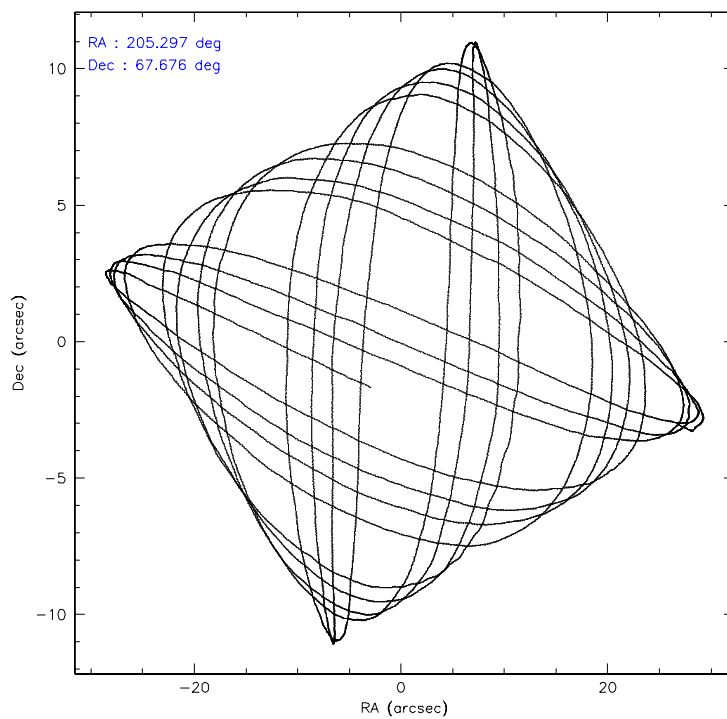
	ccd 7
level 1 events	15557
rejected events	8442
rejected %	54%

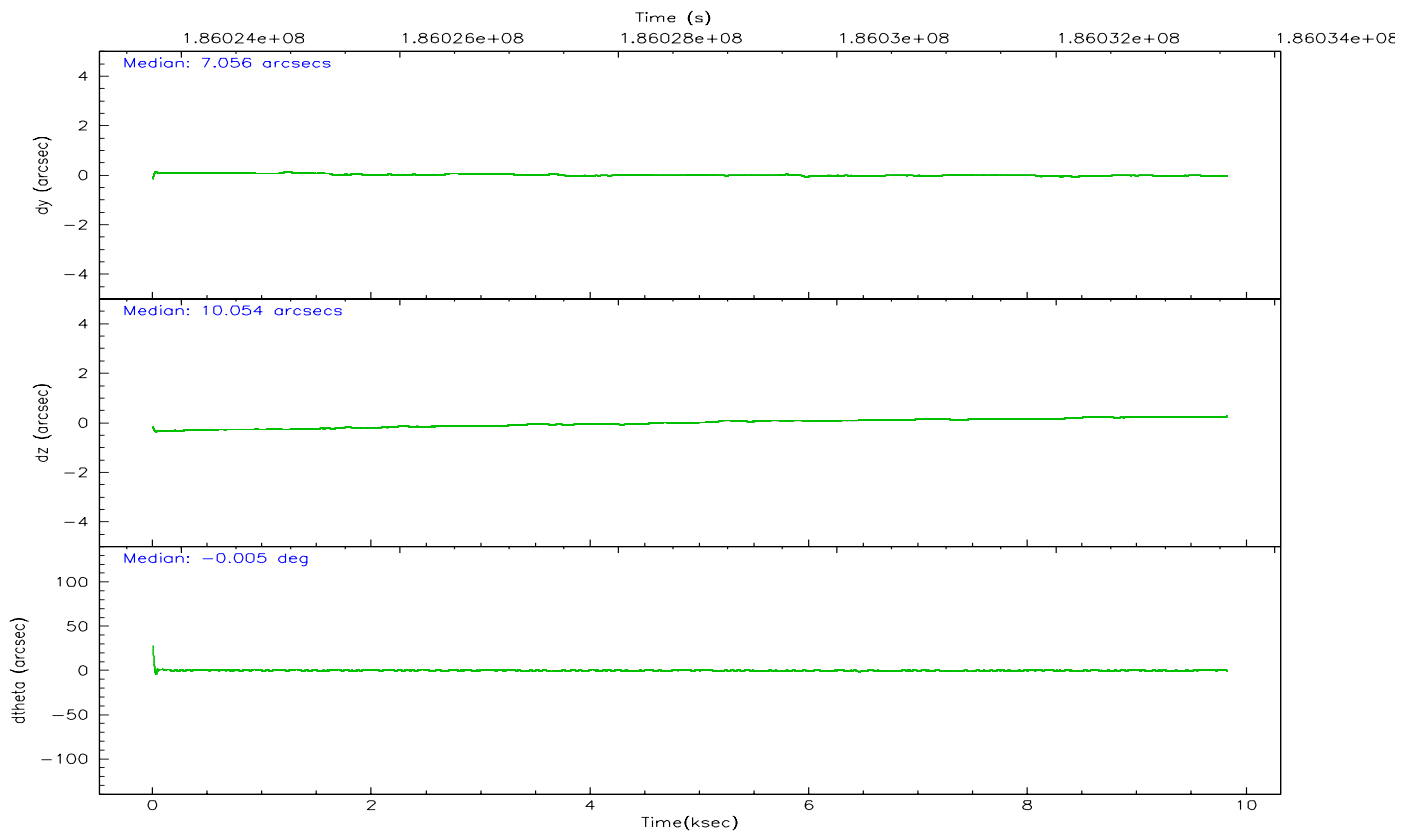
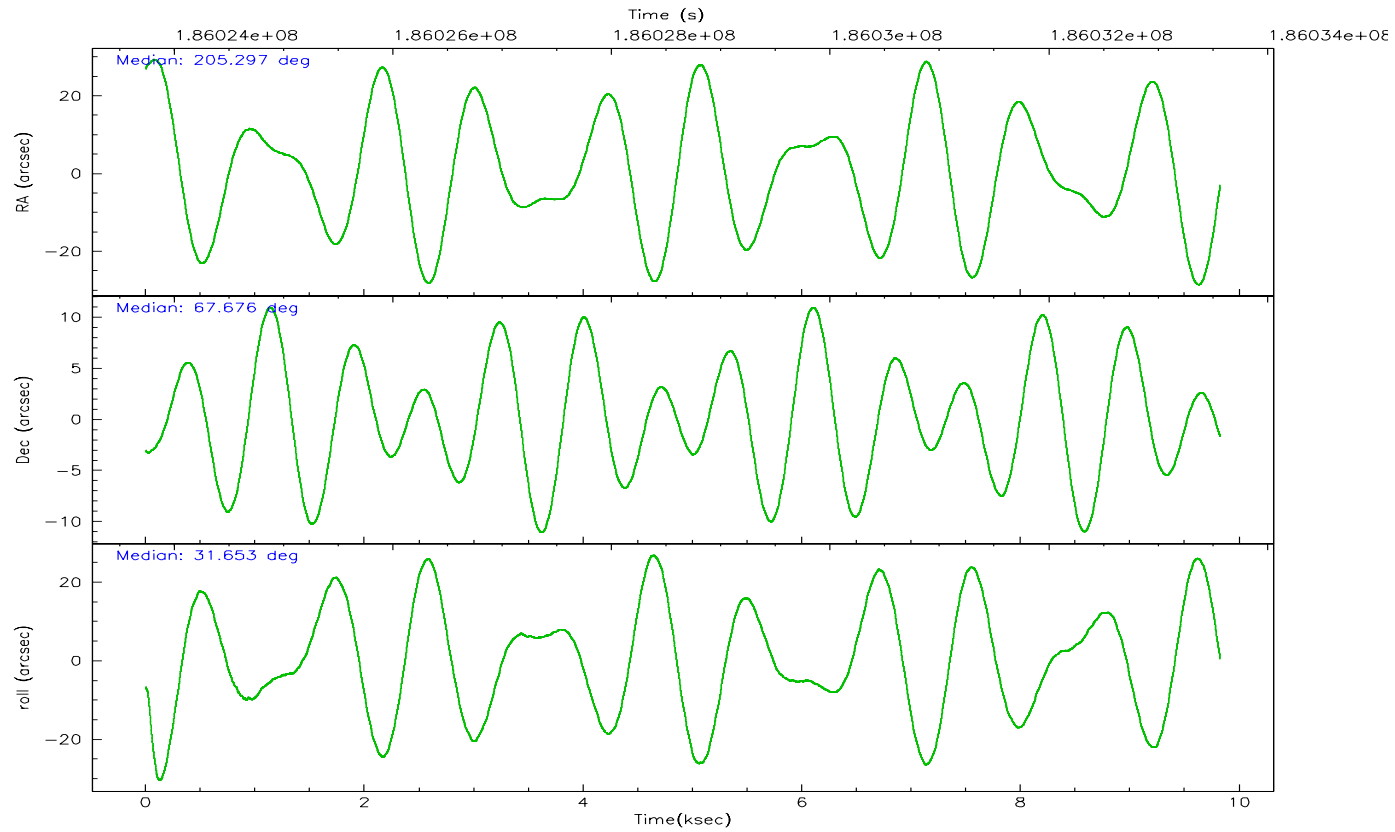
	ccd 7
grade 0 events	1126
	7%
grade 1 events	10
	0%
grade 2 events	2180
	14%
grade 3 events	830
	5%
grade 4 events	794
	5%
grade 5 events	770
	4%
grade 6 events	4541
	29%
grade 7 events	5306
	34%

2.2 Compared Parameters

Parameter	Planned	Actual	Parameter	Planned	Actual
Instrument	ACIS	ACIS	Obspar format version number	6	6
Detector	ACIS-7	ACIS-7	Obspar file type	PREDICTED	ACTUAL
Grating	NONE	NONE	Obspar update status	NONE	UPDATED
Data mode	FAINT	FAINT	On-chip summing requested	N	N
Observation mode	POINTING	POINTING	Subarray requested	1/8	1/8
Pointing RA	205.264285	205.2973340412753	Subarray start row	0	449
Pointing Dec	67.651624	67.675777052027	Subarray row count	1024	128
Pointing Roll	31.533276	31.65933294757848	Alternating exposures requested	N	N
SIM focus pos (mm)	-0.684267	-0.6828225247311905	Primary exposure time	0.000000	0.4
SIM defocus (mm)	0	0.001444936568705701			
SIM translation stage pos (mm)	-190.132523	-190.1400660498719			
SIM translation stage offset (mm)	0	0.00754346686406393			
Observation start time	186023827.184000	186022865.39308			
Observation start date	2003-11-24T01:16:03	2003-11-24T01:01:05			
Observation end time	186033573.184000	186034397.15608			
Observation end date	2003-11-24T03:58:29	2003-11-24T04:13:17			
Read mode	TIMED	TIMED			

2.3 Aspect



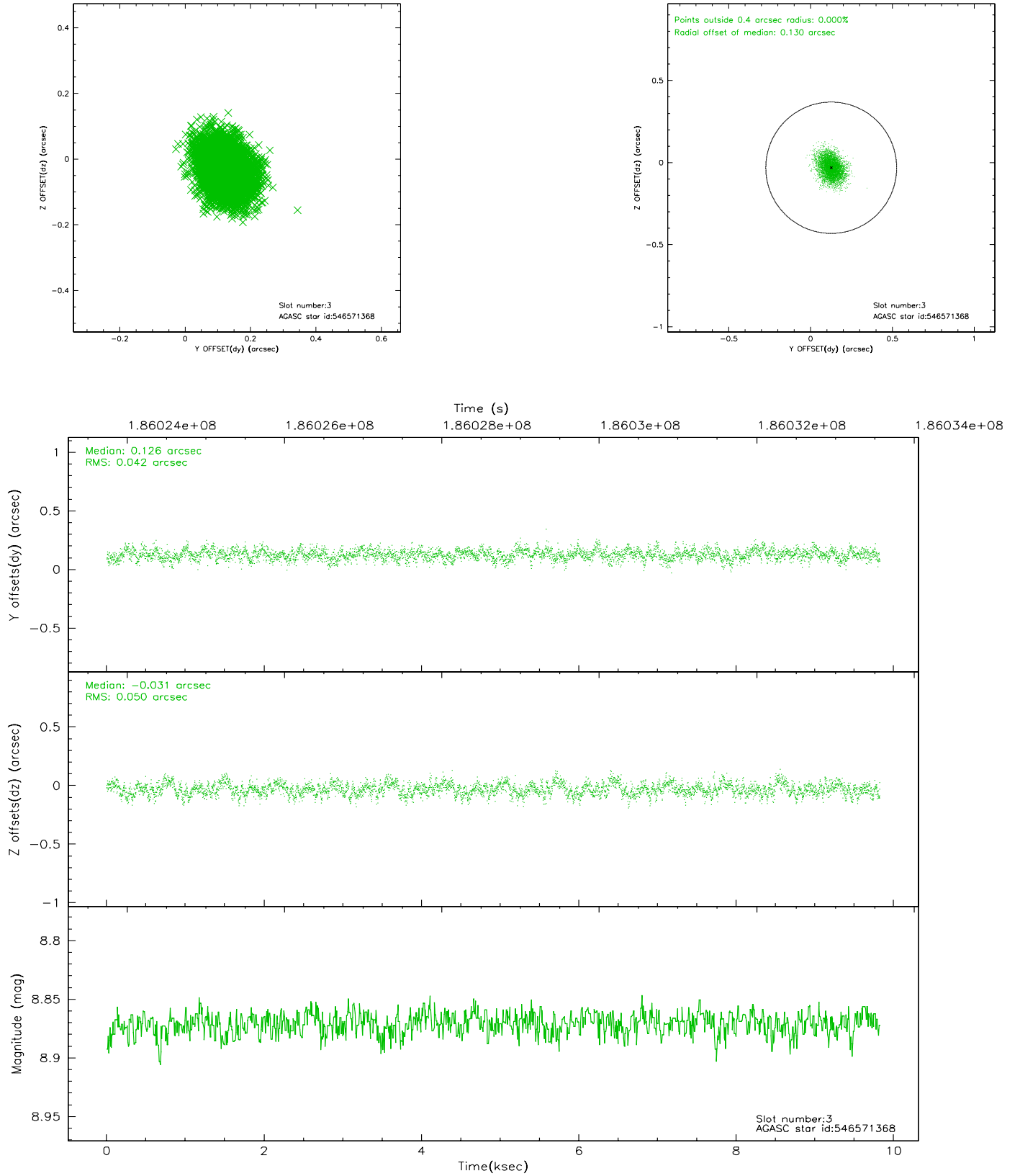


Slot Statistics

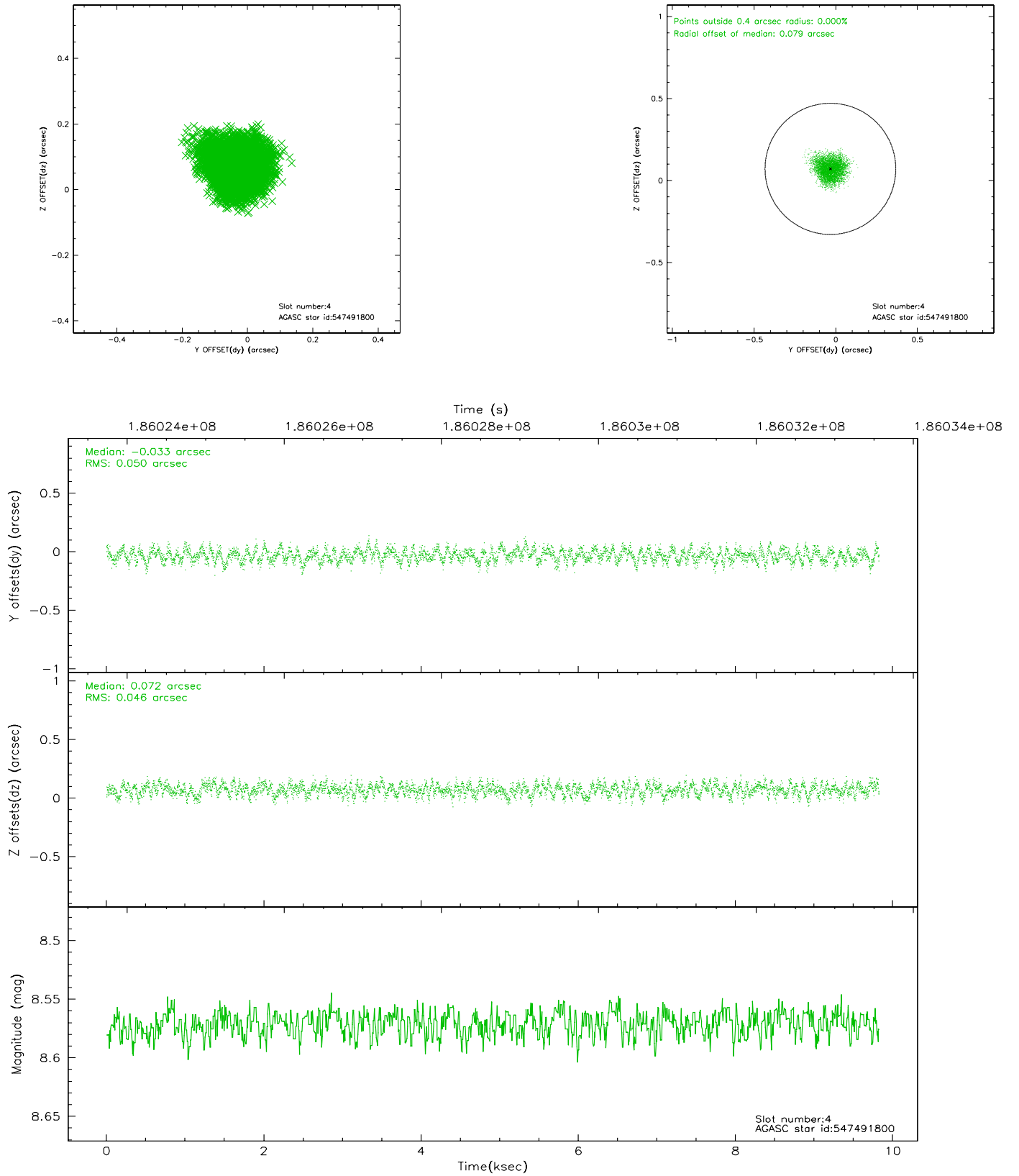
slot	status	id	mag	n_pts	med_dy	med_dz	dr1	dr2	ra	dec	mean_y	mean_z
0	FID	ACIS-S-2	7.10	2396	-0.038	0.015	0.008	0.013	0.000000	0.000000	-759.82	-1731.29
1	FID	ACIS-S-4	7.20	2396	0.026	0.014	0.005	0.008	0.000000	0.000000	2153.23	176.68
2	FID	ACIS-S-5	7.23	2396	-0.020	-0.020	0.007	0.013	0.000000	0.000000	-1811.99	170.86
3	GUIDE	546571368	8.87	4792	0.126	-0.031	0.070	0.114	204.637916	67.190739	-1609.89	-953.39
4	GUIDE	547491800	8.57	4791	-0.033	0.072	0.074	0.114	206.811522	67.372407	1315.04	-1954.77
5	GUIDE	547493512	8.80	4793	-0.098	0.116	0.061	0.098	206.454377	67.283994	726.96	-1979.88
6	GUIDE	576980152	9.51	4787	0.073	0.015	0.094	0.154	206.099139	67.510638	719.09	-1027.45
7	GUIDE	576991304	9.44	4791	-0.067	-0.167	0.089	0.141	205.647787	68.411012	1863.88	2065.80

2.4 Star Slots

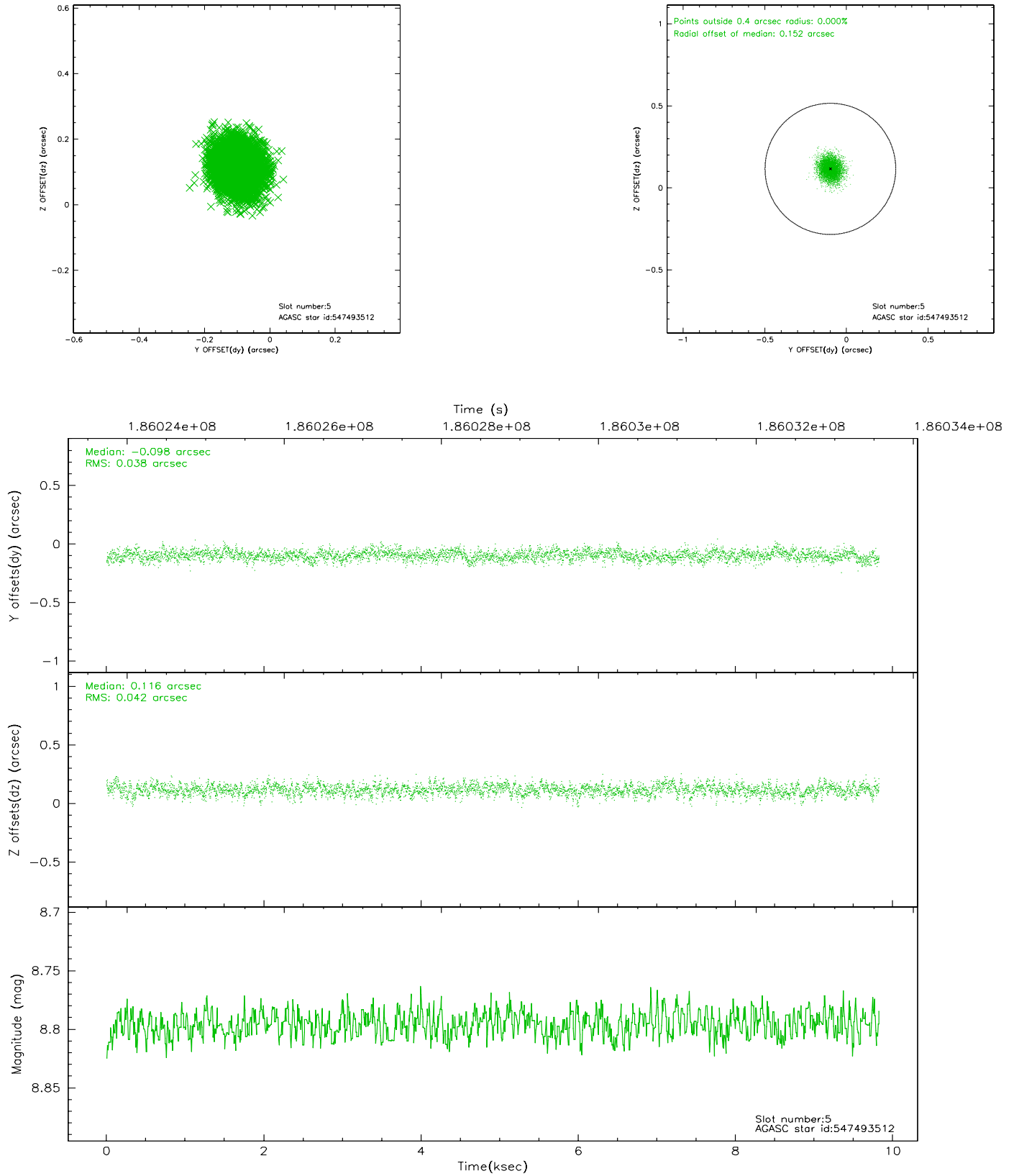
2.4.1 Slot 3



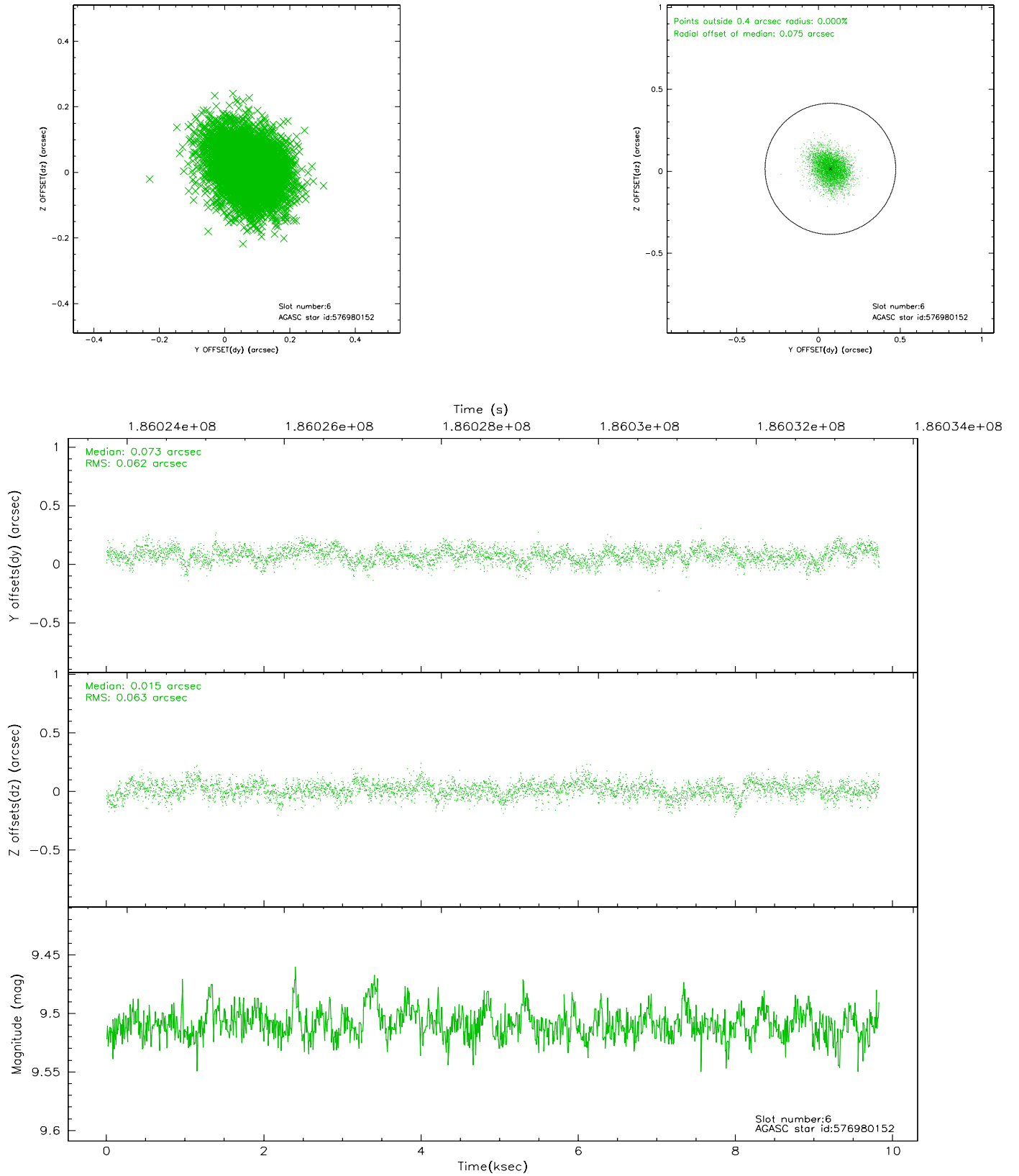
2.4.2 Slot 4



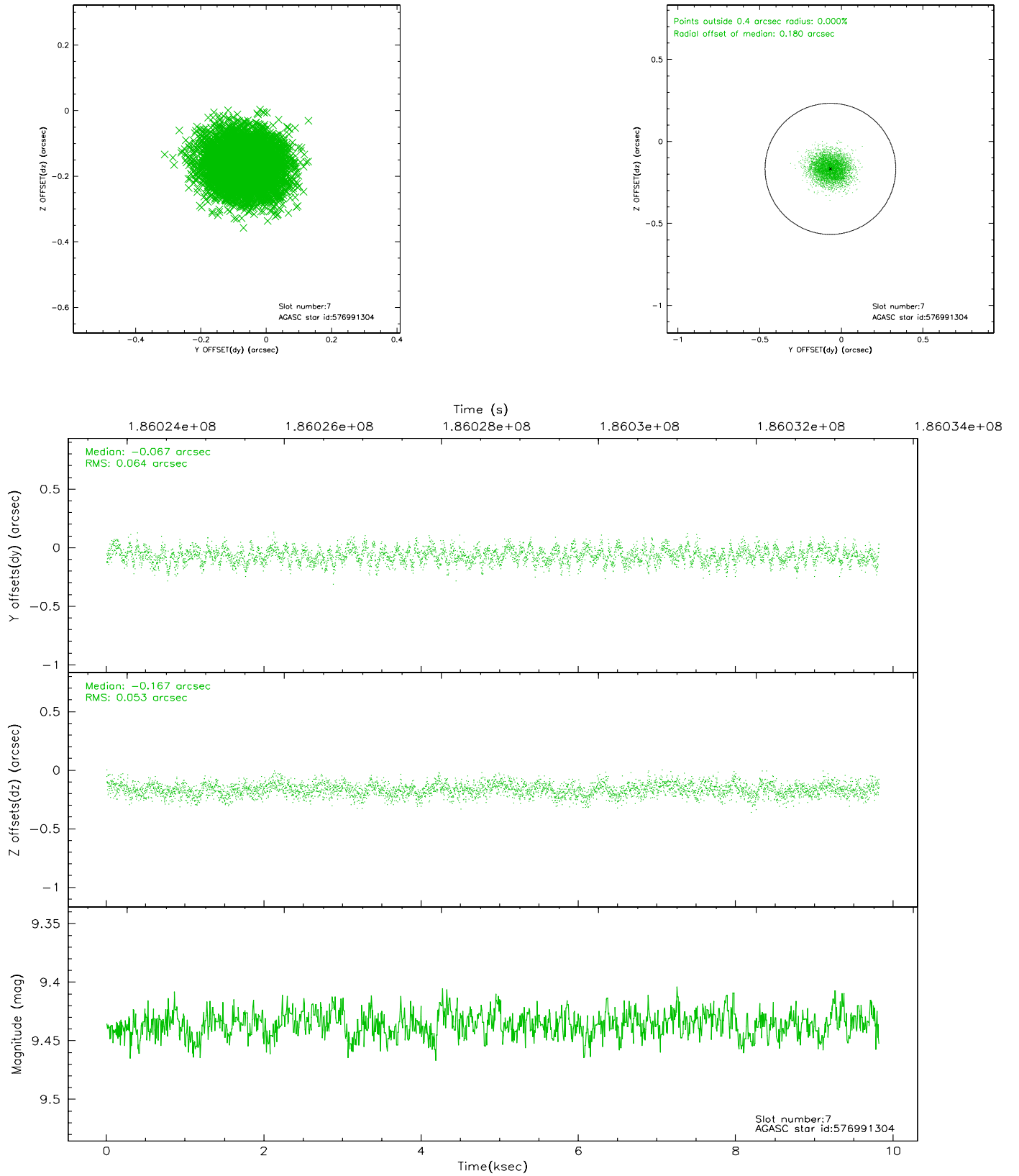
2.4.3 Slot 5



2.4.4 Slot 6

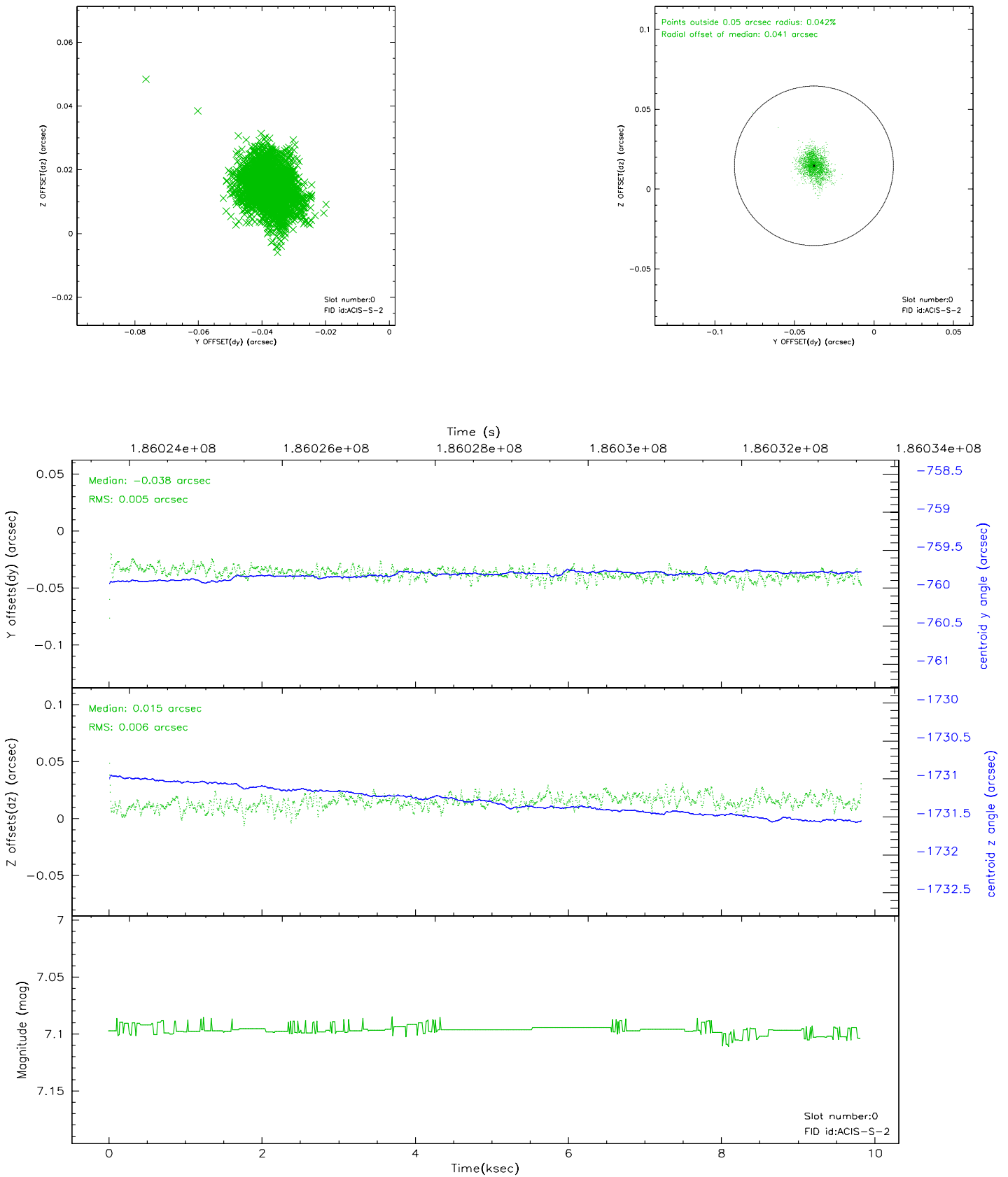


2.4.5 Slot 7

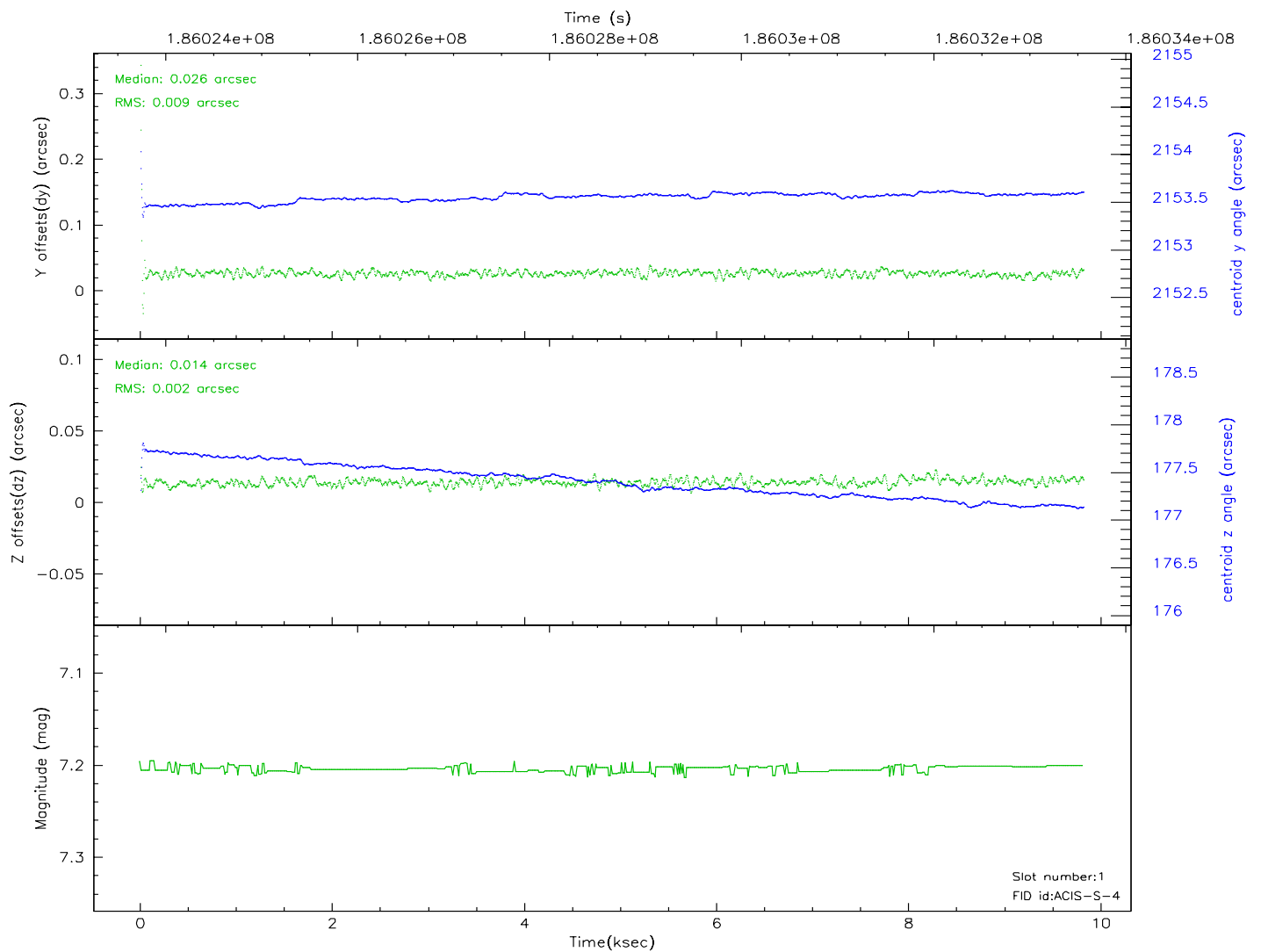
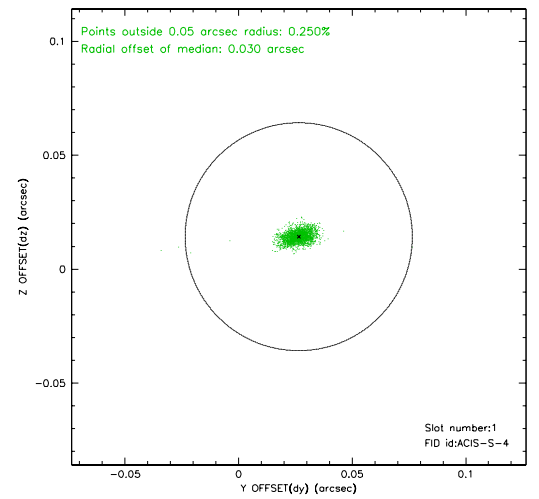
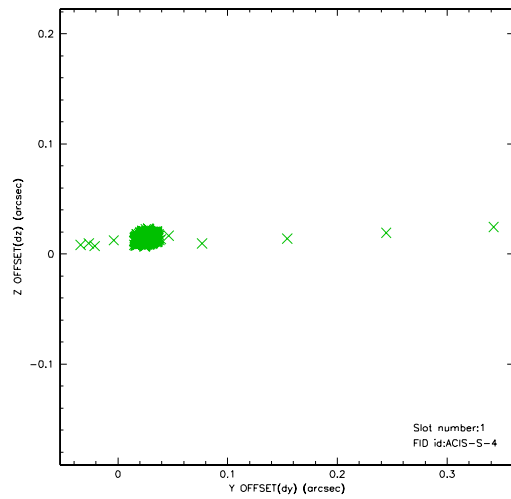


2.5 FID Slots

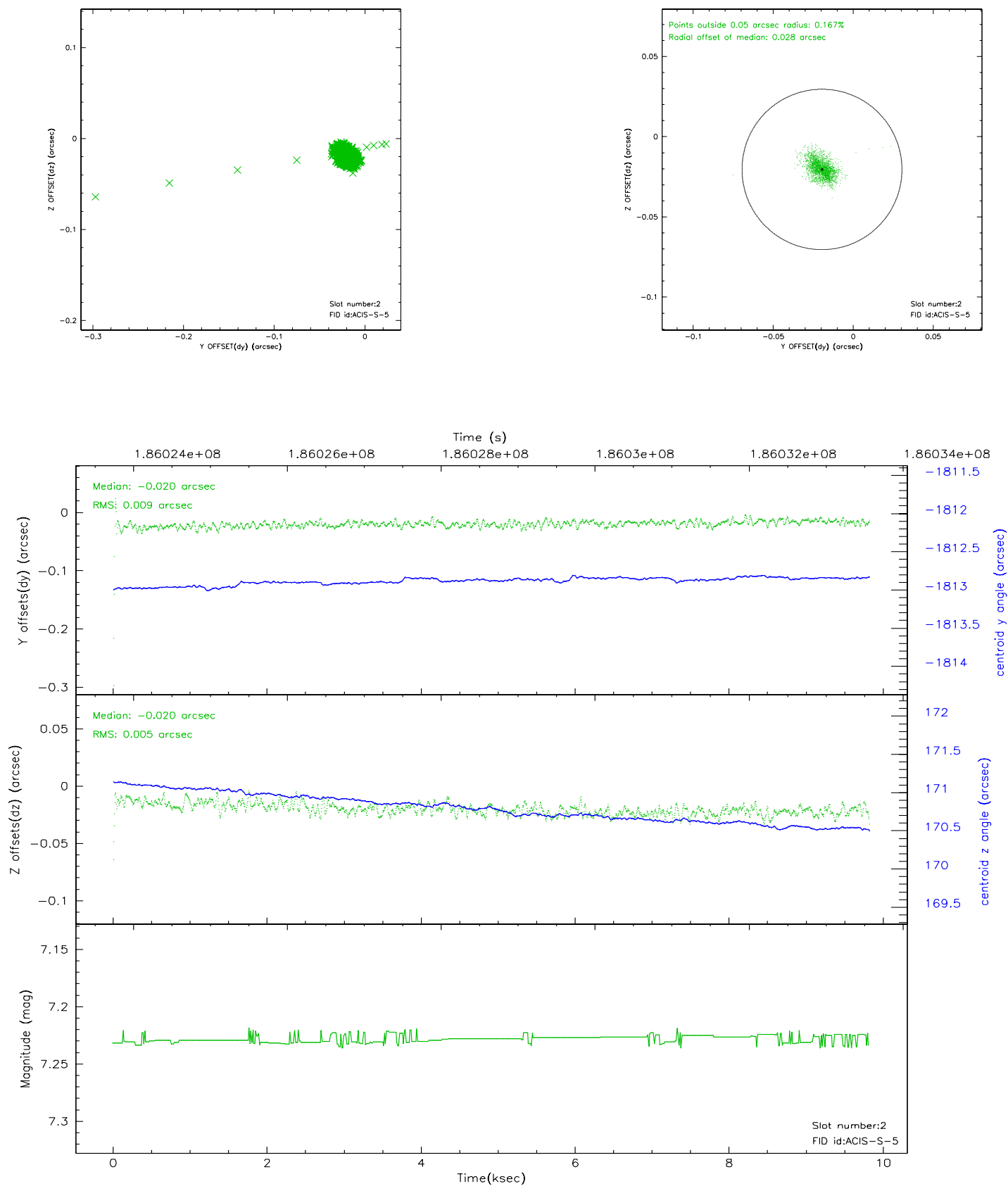
2.5.1 Slot 0



2.5.2 Slot 1



2.5.3 Slot 2



3 Point Sources

A Summary

A.1 Status

V&V Scientist	Jen Lauer
V&V Date (YYYY-MM-DD)	2006.06.26
V&V Edition	1
V&V Disposition and Status	OK
V&V Charge Time	9.822

A.2 Comments