

V&V Reference Report

L2 ASCDS Version : 8.4.5

Observation 4845 - L2 Version 3
Chandra X-Ray Center

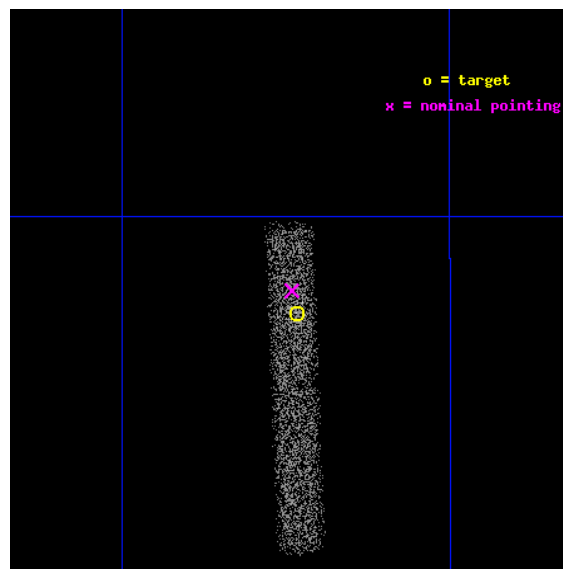
L2 Processing Date : Nov 10 2012

Contents

1	Front	2
2	OBI	3
2.1	OBI	3
2.1.1	Images	3
2.1.2	Bias	3
2.1.3	Parameters	4
2.1.4	Events	4
2.2	Compared Parameters	5
2.3	Aspect	6
2.4	Star Slots	9
2.4.1	Slot 3	9
2.4.2	Slot 4	10
2.4.3	Slot 5	11
2.4.4	Slot 6	12
2.4.5	Slot 7	13
2.5	FID Slots	14
2.5.1	Slot 0	14
2.5.2	Slot 1	15
2.5.3	Slot 2	16
A	Summary	17
A.1	Status	17
A.2	Comments	17

1 Front

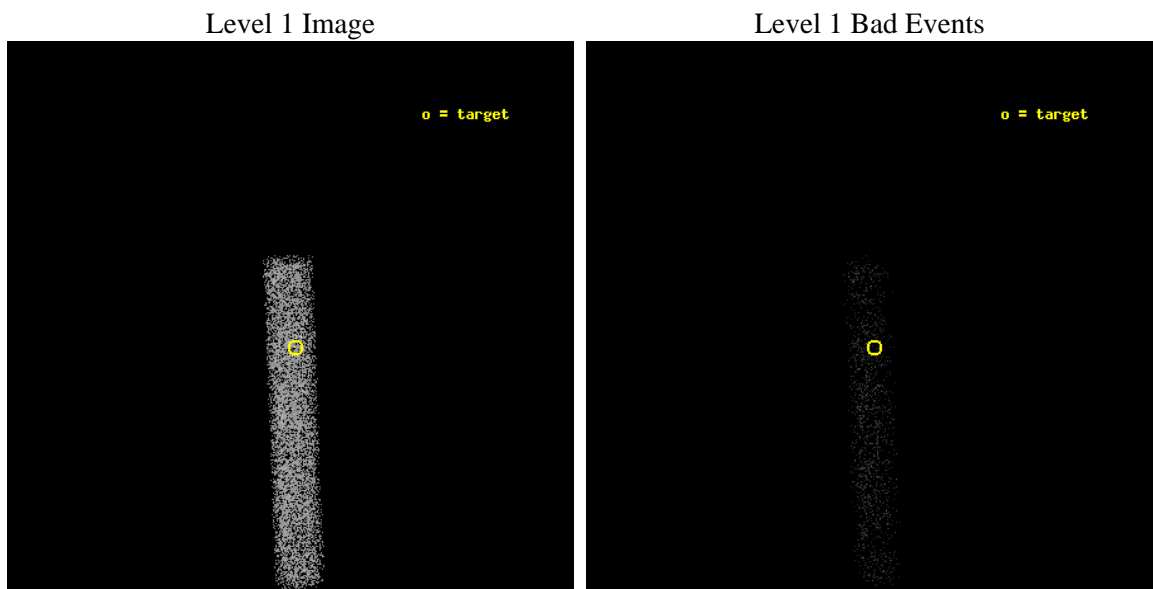
seq_num	700927	Sequence number
obs_id	4845	Observation id
title	Are there any true Seyfert 2 nuclei?	Proposal title
observer	Prof RICHARD POGGE	Principal investigator
object	NGC 3982	Source name
dtcycle	0	
cycle	P	events from which exps? Prim/Second/Both
ra_targ	179.117083	Observer's specified target RA [deg]
dec_targ	55.125278	Observer's specified target Dec [deg]
ra_nom	179.12074995776	Nominal RA [deg]
dec_nom	55.13472280447	Nominal Dec [deg]
roll_nom	87.713981166377	Nominal Roll [deg]
revision	3	Processing version of data
ontime	10148.800151199	Sum of GTIs [s]
livetime	9204.4260395421	Livetime [s]
ontime7	10148.800151199	Sum of GTIs [s]
l2events	5151	Number of level 2 events



2 OBI

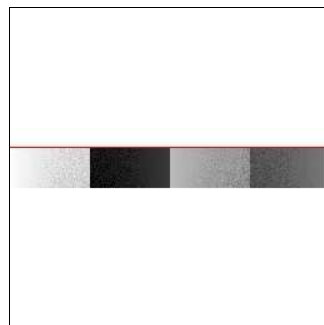
2.1 OBI

2.1.1 Images



2.1.2 Bias

Chip 7



2.1.3 Parameters

obi_num	0	Obi number	sched_exp_time	10000.000000	[s] Scheduled observation exposure time
ascdsver	8.4.5	Processing system revision	ontime	10148.800151199	Sum of GTIs [s]
caldsver	4.5.2	 	ontime7	10148.800151199	Sum of GTIs [s]
date	2012-11-10T03:01:01	Date and time of file creation	l1events	12938	Number of level 1 events
revision	3	Processing version of data			

2.1.4 Events

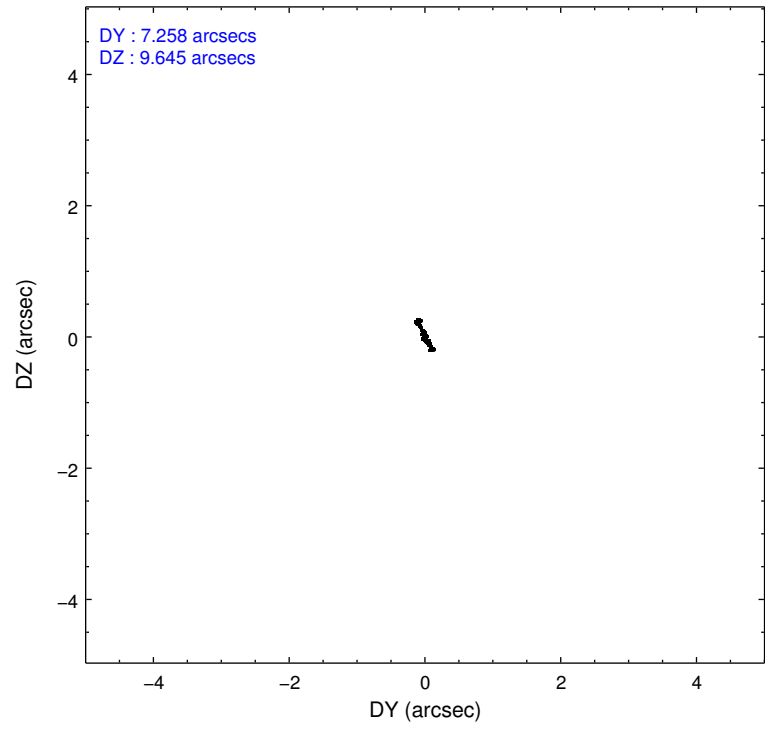
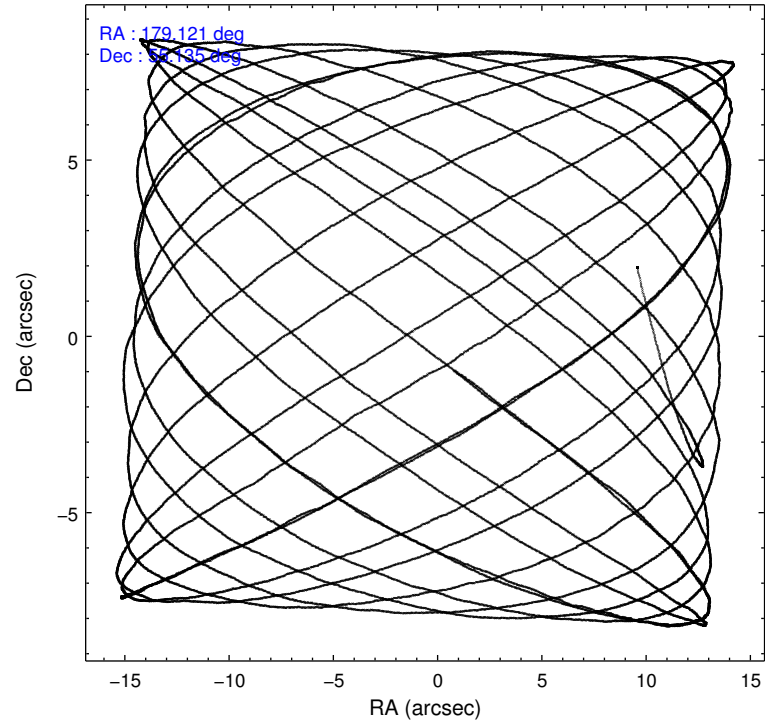
	ccd 7
level 1 events	12938
rejected events	7575
rejected %	58%

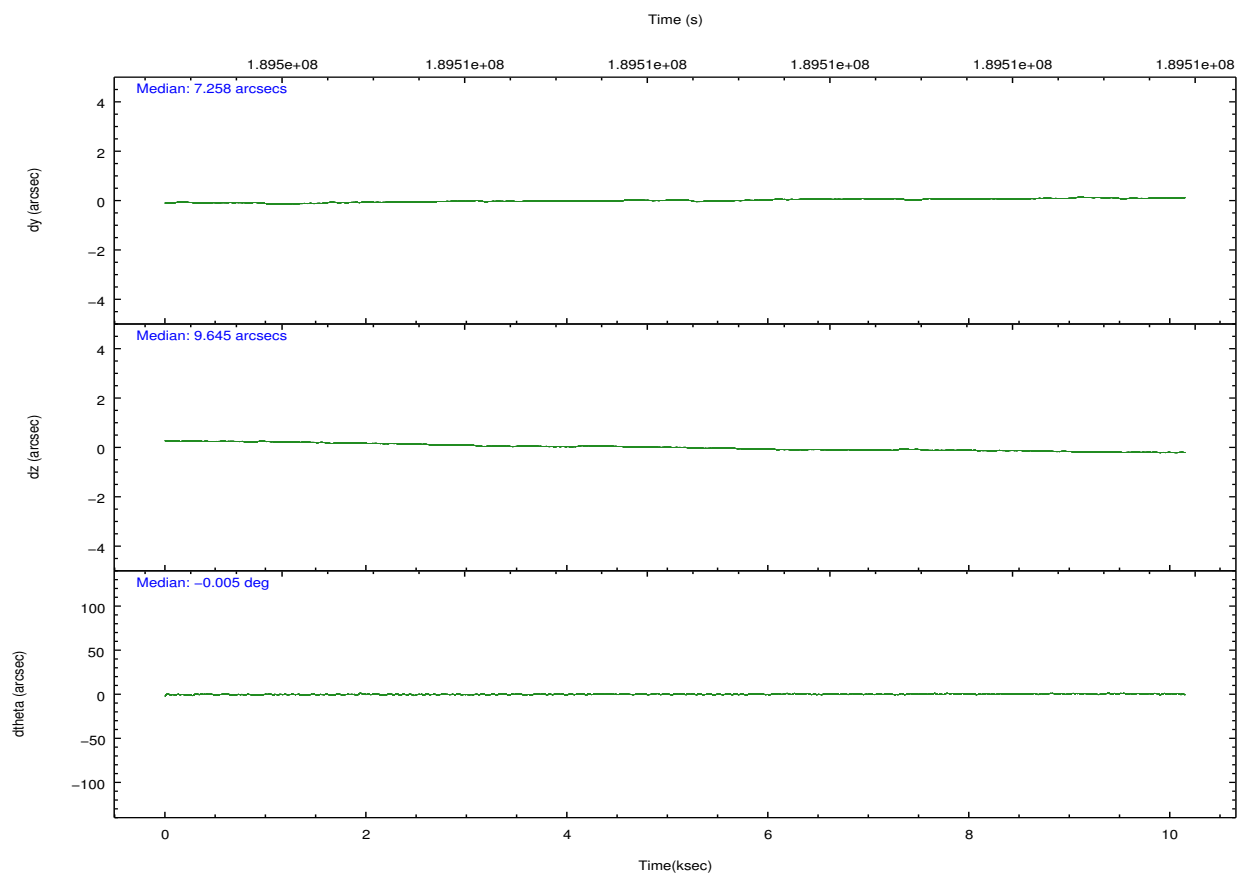
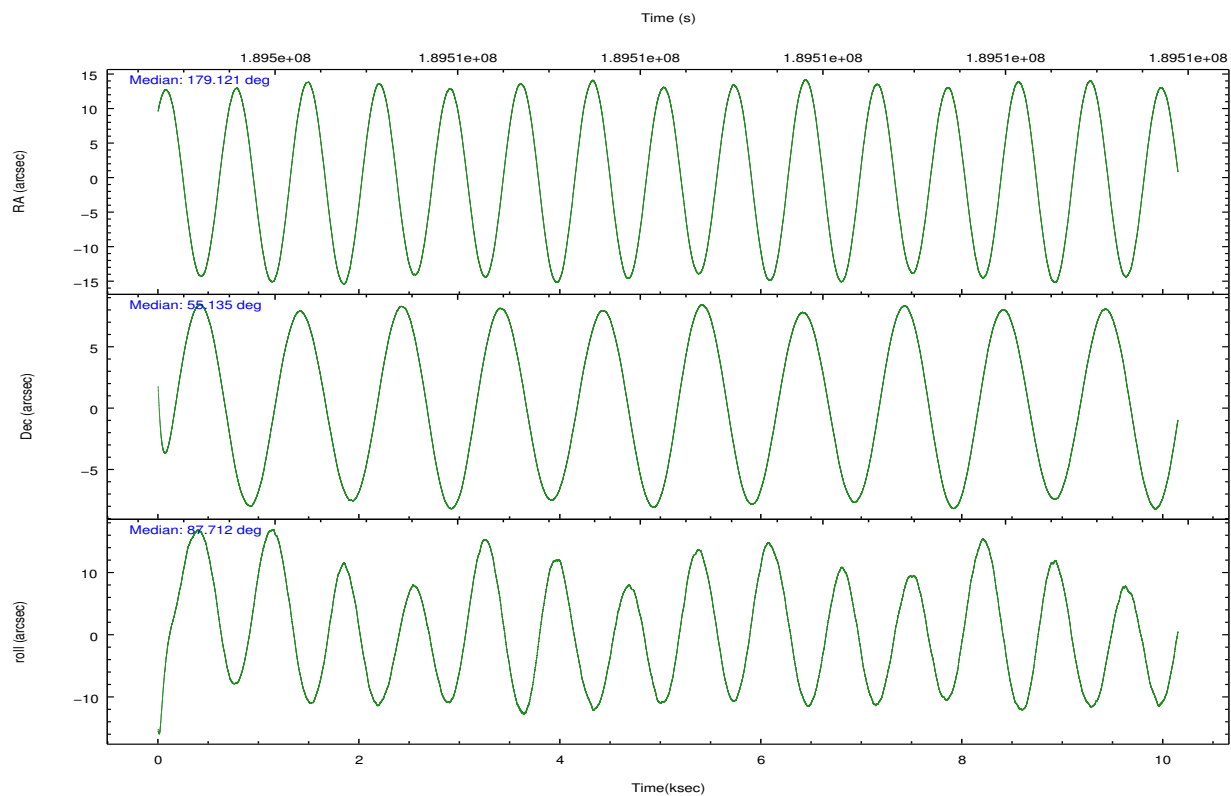
	ccd 7
grade 0 events	688
	5%
grade 1 events	10
	0%
grade 2 events	1141
	8%
grade 3 events	747
	5%
grade 4 events	753
	5%
grade 5 events	1212
	9%
grade 6 events	2657
	20%
grade 7 events	5730
	44%

2.2 Compared Parameters

Parameter	Planned	Actual	Parameter	Planned	Actual
Instrument	ACIS	ACIS	Obspar format version number	7	7
Detector	ACIS-7	ACIS-7	Obspar file type	PREDICTED	ACTUAL
Grating	NONE	NONE	Obspar update status	NONE	UPDATED
Data mode	FAINT	FAINT	Number of optional ACIS chips dropped	0	0
Observation mode	POINTING	POINTING	On-chip summing requested	N	N
[deg] Pointing RA	179.143424	179.1207499577639	Subarray requested	CUSTOM	1/8
[deg] Pointing Dec	55.110791	55.1347228044699	Subarray start row	449	449
[deg] Pointing Roll	87.538772	87.71398116637675	Subarray row count	128	128
[mm] SIM focus pos	-0.684267	-0.6828225247311905	Alternating exposures requested	N	N
[mm] SIM defocus	0	0.001444936568705701	[s] Primary exposure time	0.000000	0.4
[mm] SIM translation stage pos	-190.132523	-190.1425803651734			
[mm] SIM translation stage offset	0	0.01005778216563158			
[s] Observation start time (MET)	189503384.184000	189501998.95663			
Observation start date	2004-01-03T07:48:40	2004-01-03T07:26:38			
[s] Observation end time (MET)	189513384.184000	189513916.63215			
Observation end date	2004-01-03T10:35:20	2004-01-03T10:45:16			
Read mode	TIMED	TIMED			

2.3 Aspect



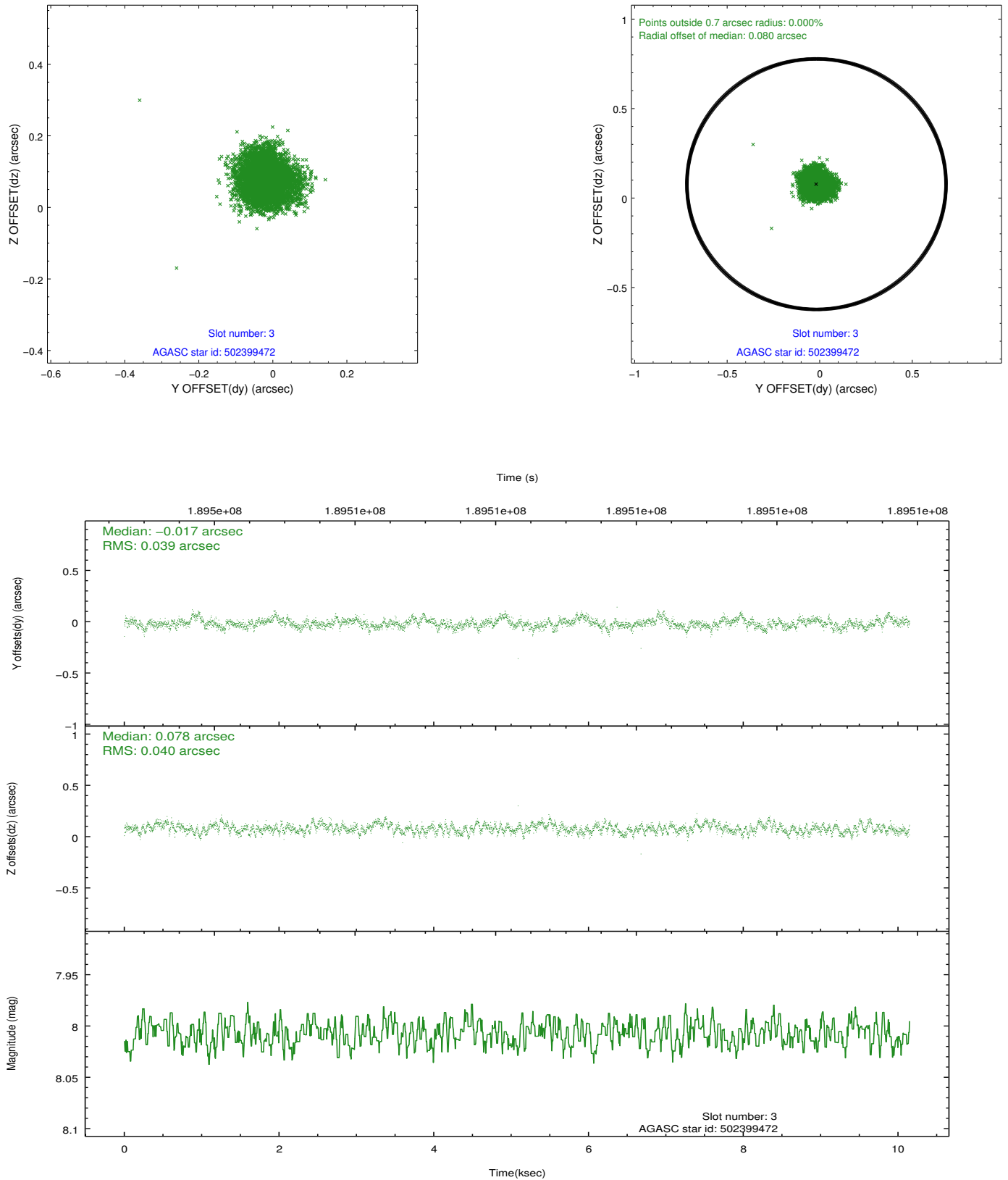


Slot Statistics

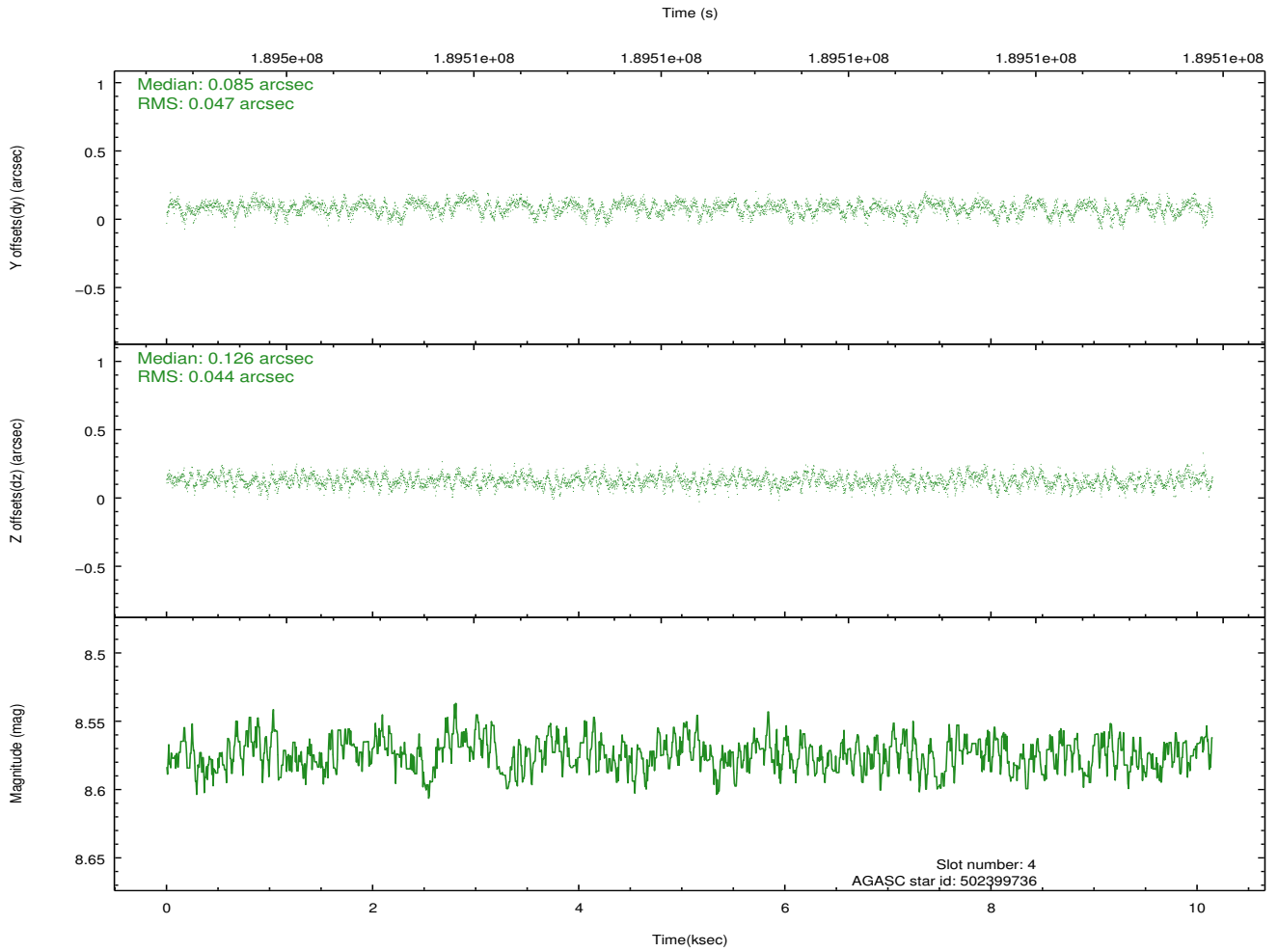
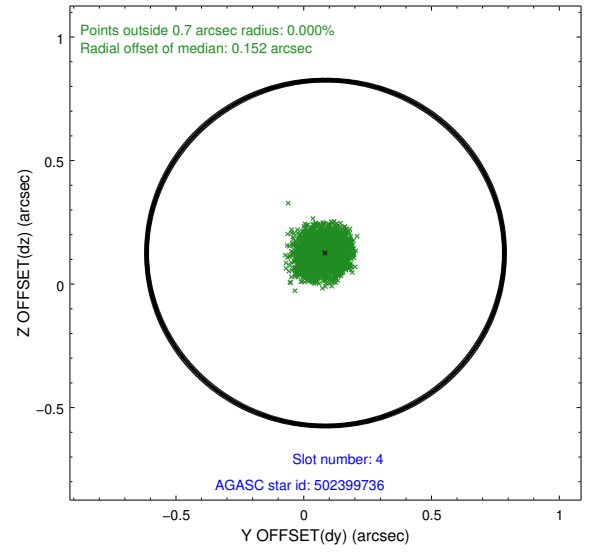
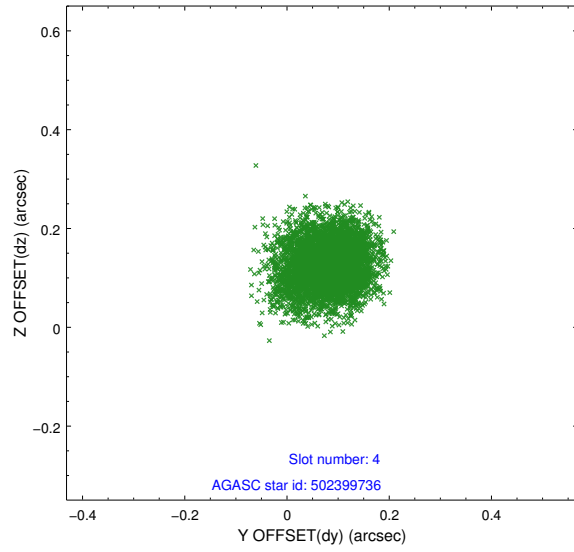
slot	status	id	mag	n_pts	med_dy	med_dz	dr1	dr2	ra	dec	mean_y	mean_z
0	FID	ACIS-S-2	7.10	2476	-0.031	-0.021	0.008	0.014	0.000000	0.000000	-760.03	-1730.87
1	FID	ACIS-S-4	7.20	2476	0.058	0.020	0.006	0.011	0.000000	0.000000	2153.08	177.16
2	FID	ACIS-S-5	7.23	2476	-0.058	0.009	0.009	0.016	0.000000	0.000000	-1812.25	171.36
3	GUIDE	502399472	8.01	4952	-0.017	0.078	0.060	0.096	179.672347	54.485646	-2196.57	-1201.42
4	GUIDE	502399736	8.57	4950	0.085	0.126	0.068	0.111	179.860915	54.569737	-1874.13	-1579.42
5	GUIDE	502400568	8.68	4950	0.031	-0.068	0.065	0.107	178.868651	54.779372	-1215.49	518.63
6	GUIDE	502793960	9.57	4945	-0.011	0.095	0.084	0.137	179.393376	55.531414	1535.64	-443.27
7	GUIDE	502793208	9.16	4946	-0.092	-0.234	0.107	0.162	177.980338	55.276529	513.94	2409.09

2.4 Star Slots

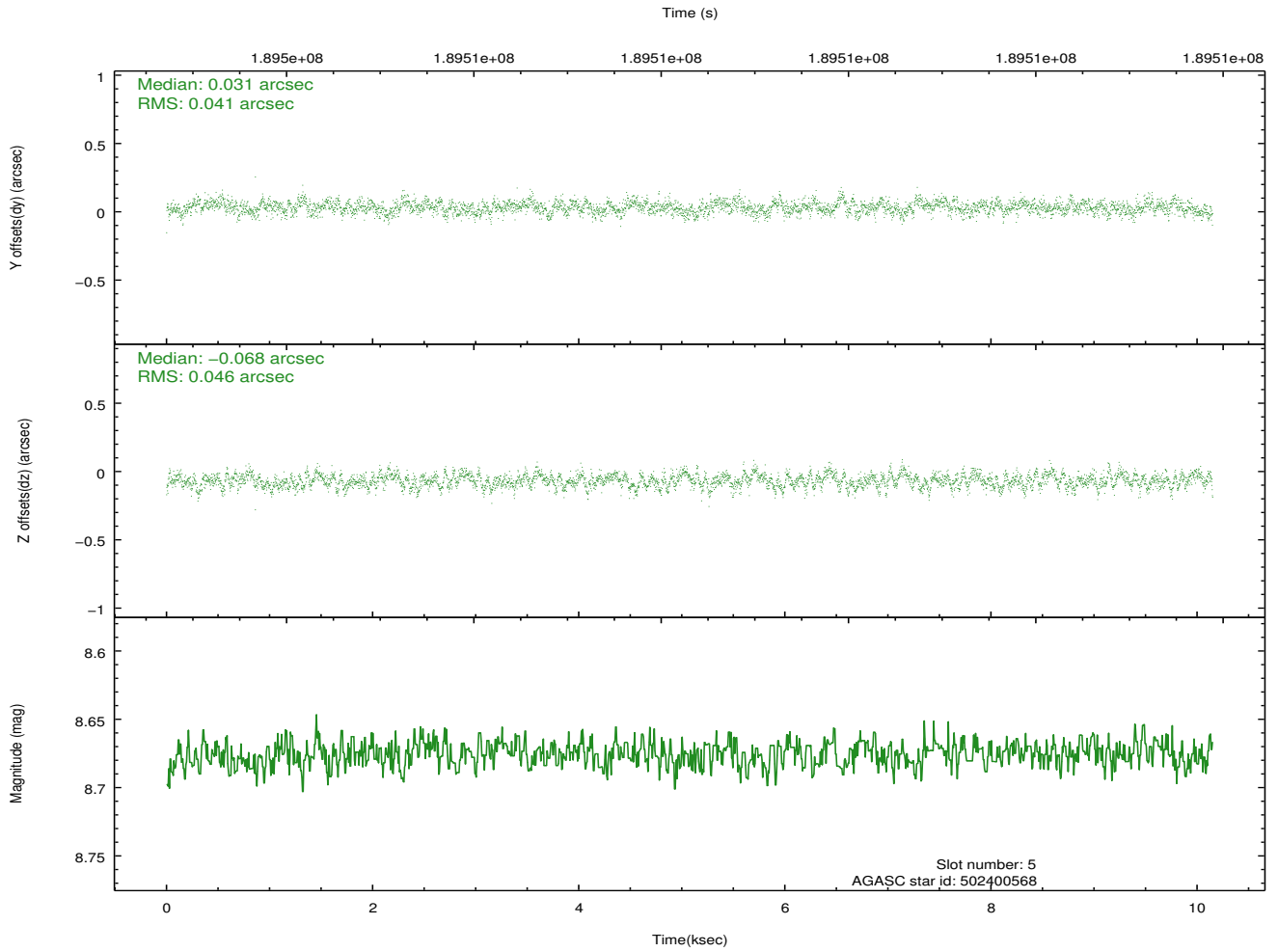
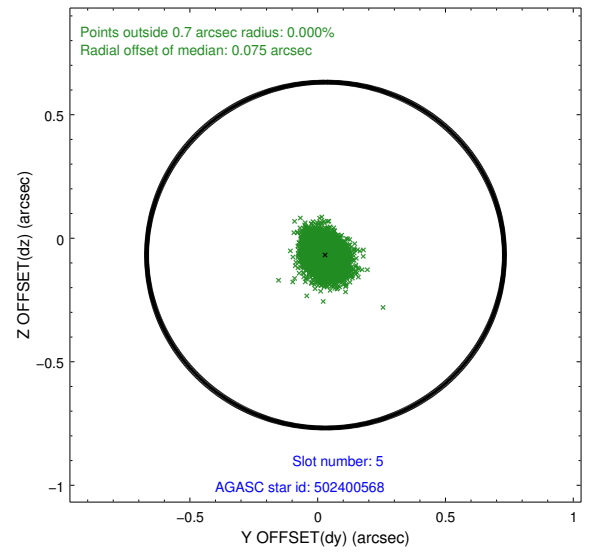
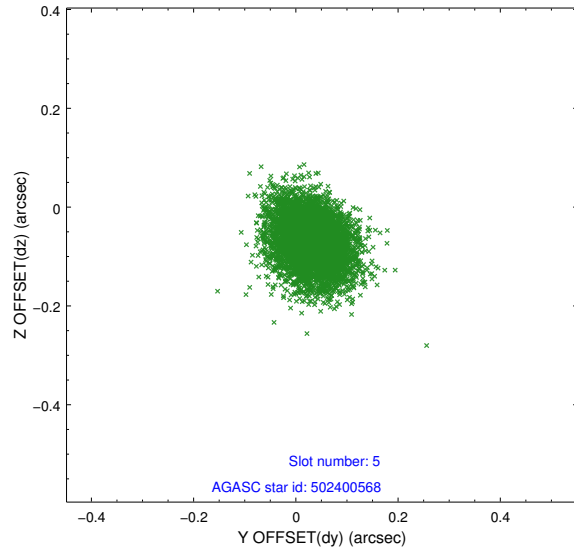
2.4.1 Slot 3



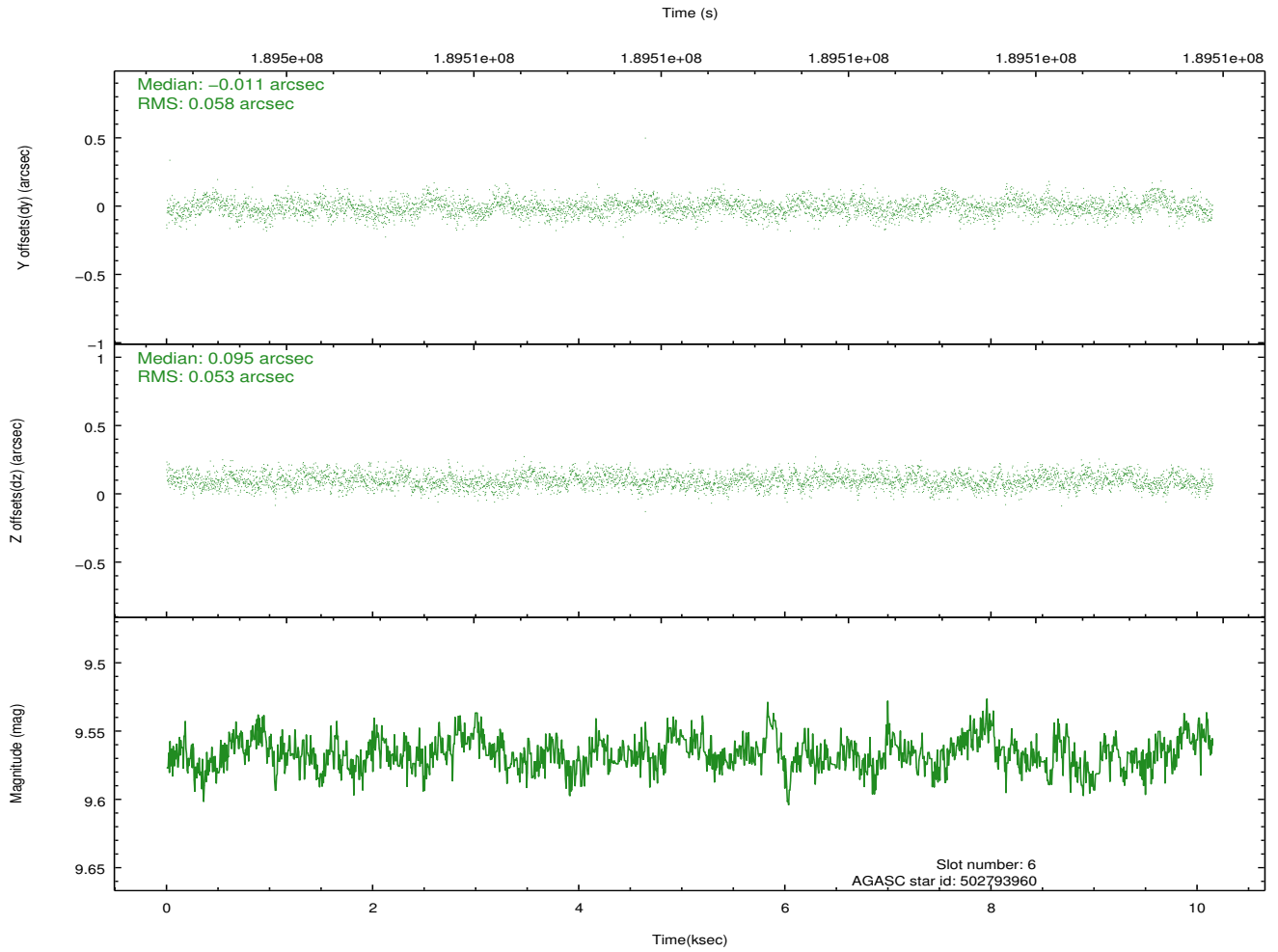
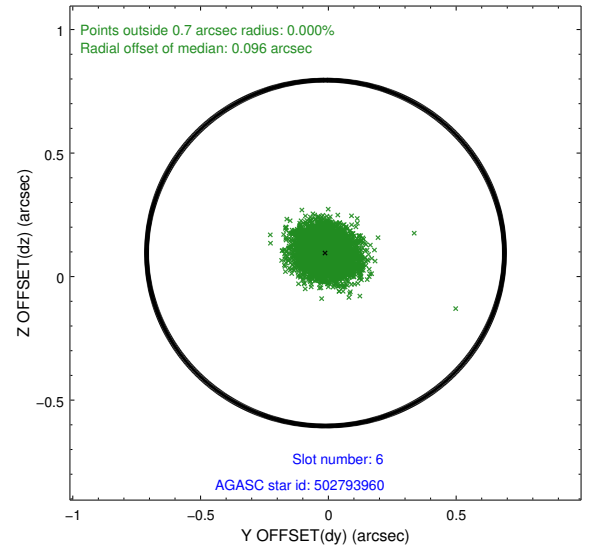
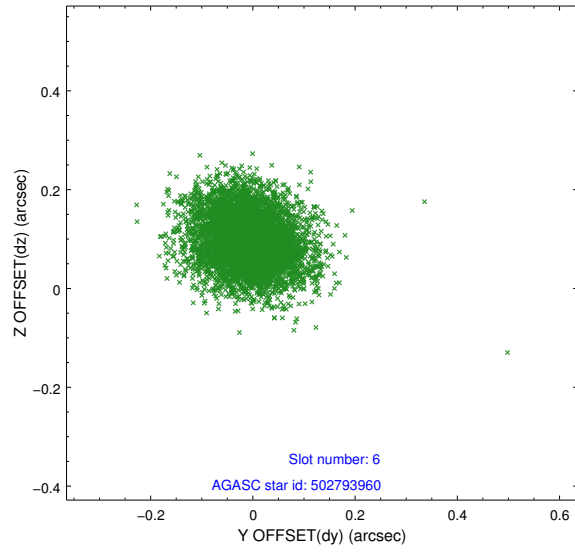
2.4.2 Slot 4



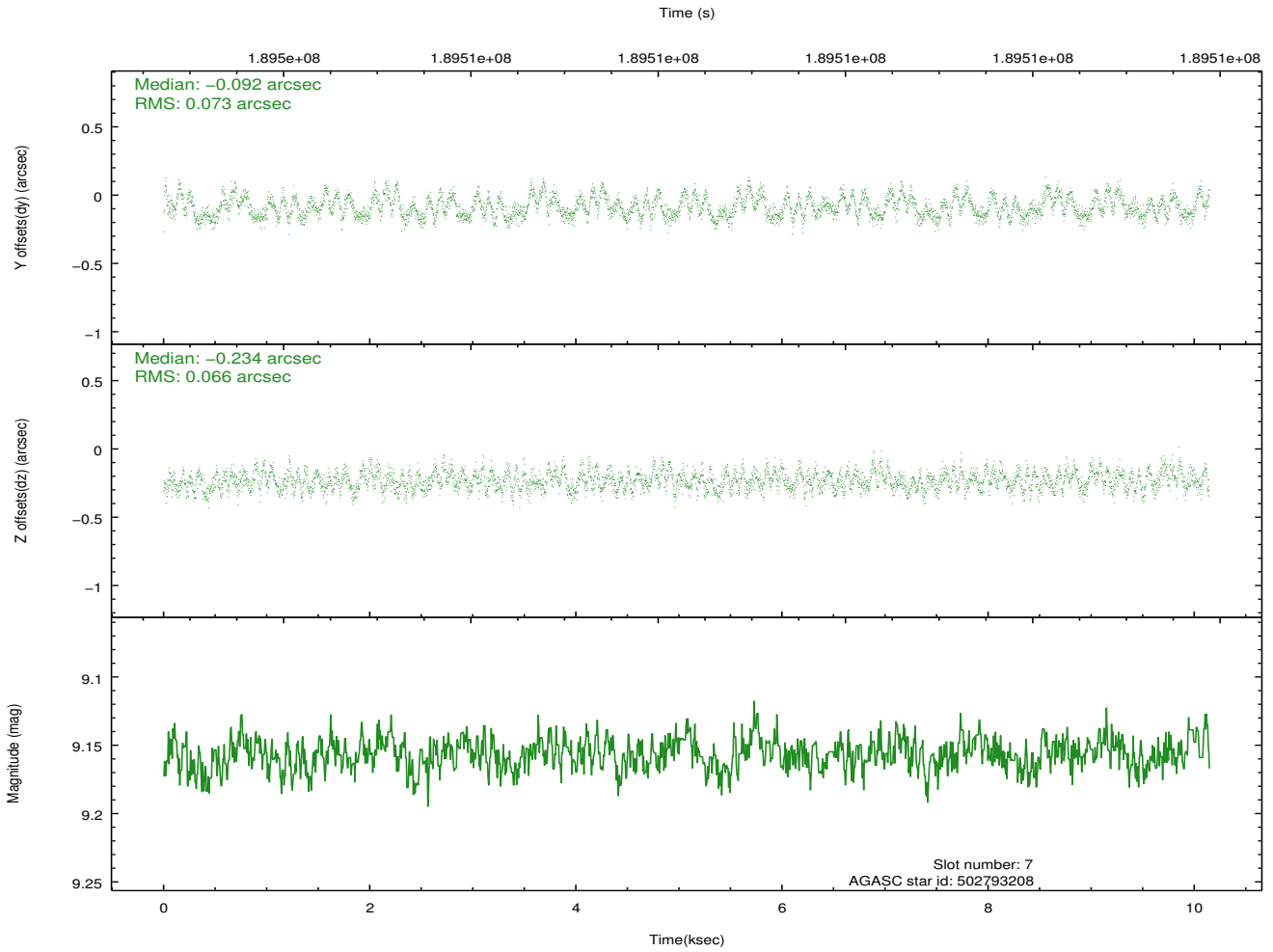
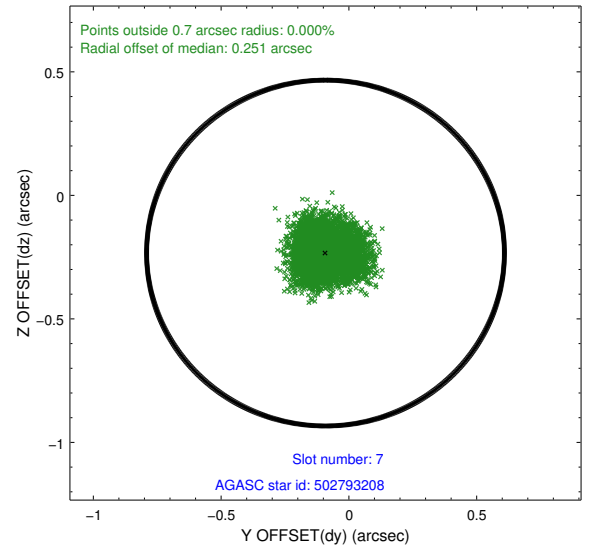
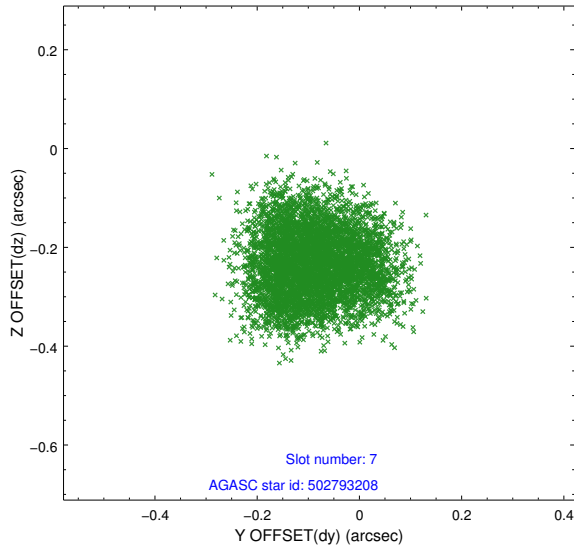
2.4.3 Slot 5



2.4.4 Slot 6

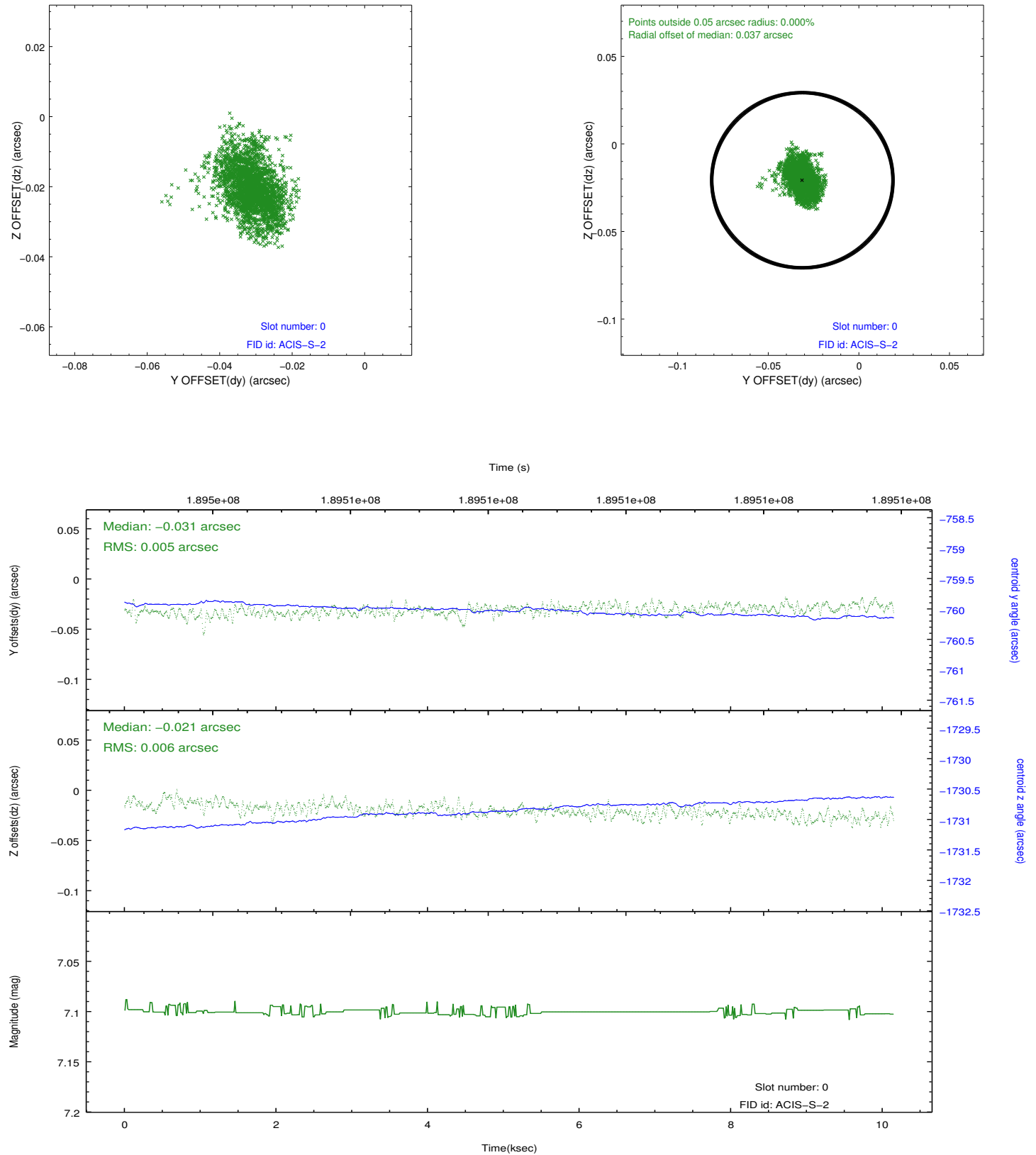


2.4.5 Slot 7

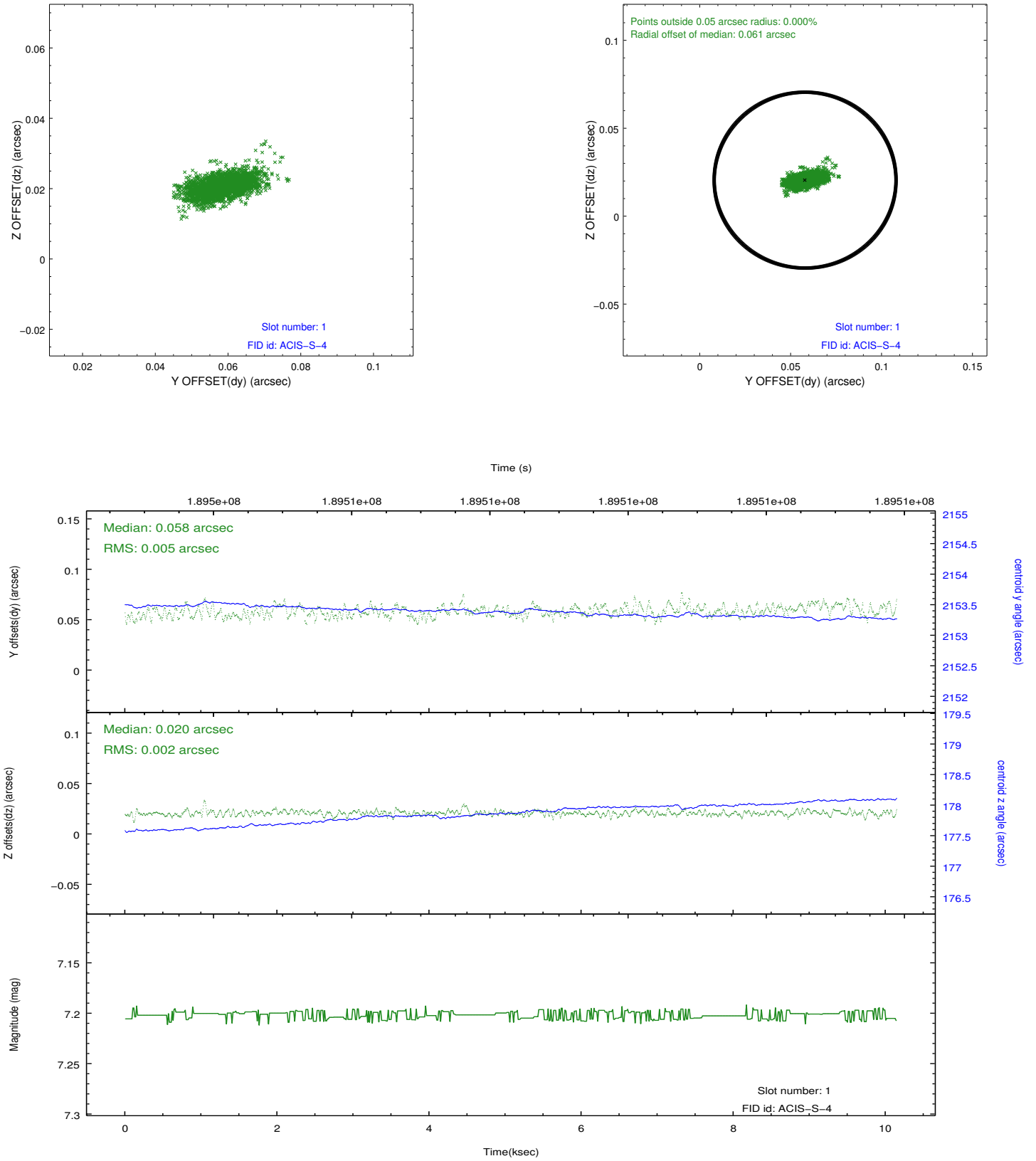


2.5 FID Slots

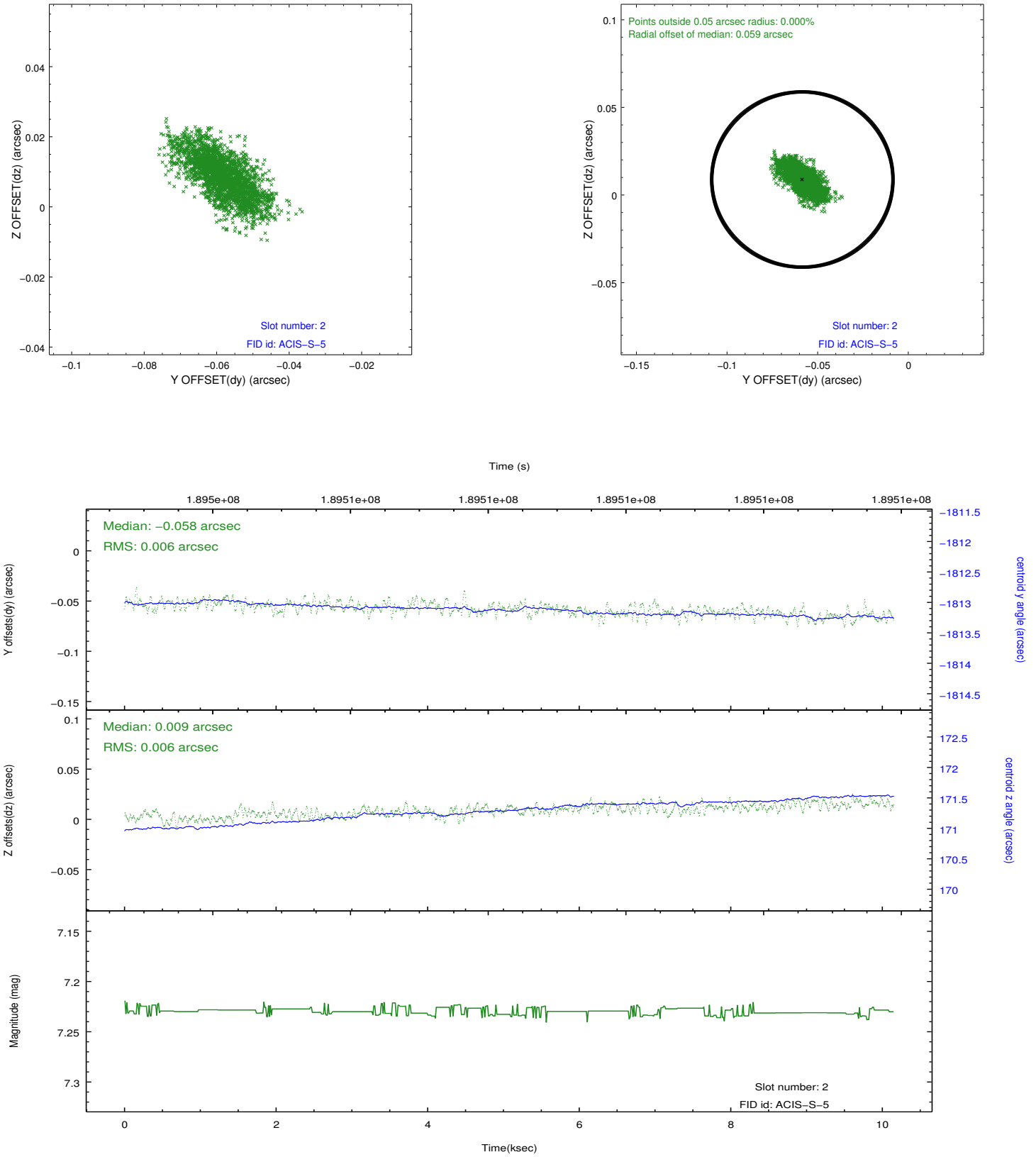
2.5.1 Slot 0



2.5.2 Slot 1



2.5.3 Slot 2



A Summary

A.1 Status

V&V Scientist	Jen Lauer
V&V Date (YYYY-MM-DD)	2012.12.04
V&V Edition	1
V&V Disposition and Status	OK
V&V Charge Time	10.148

A.2 Comments