

V&V Reference Report

L2 ASCDS Version : 7.6.8

Observation 4836 - L2 Version 001
Chandra X-Ray Center

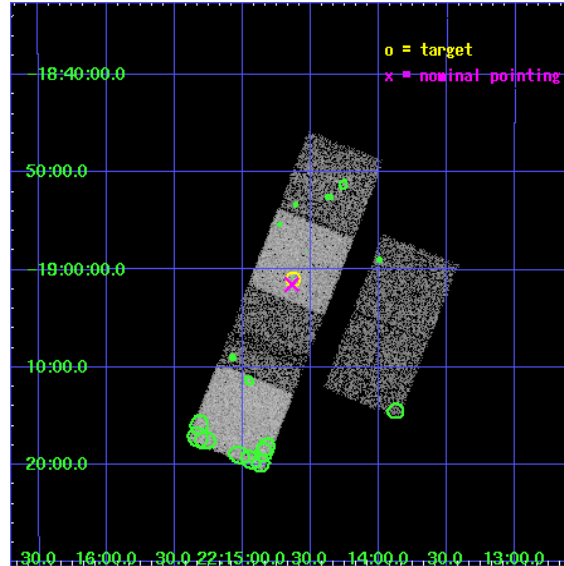
L2 Processing Date : Jun 28 2006

Contents

1	Front	2
2	OBI	3
2.1	OBI	3
2.1.1	Images	3
2.1.2	Bias	3
2.1.3	Parameters	4
2.1.4	Events	4
2.2	Compared Parameters	5
2.3	Aspect	6
2.4	Star Slots	9
2.4.1	Slot 3	9
2.4.2	Slot 4	10
2.4.3	Slot 5	11
2.4.4	Slot 6	12
2.4.5	Slot 7	13
2.5	FID Slots	14
2.5.1	Slot 0	14
2.5.2	Slot 1	15
2.5.3	Slot 2	16
3	Point Sources	17
A	Summary	18
A.1	Status	18
A.2	Comments	18

1 Front

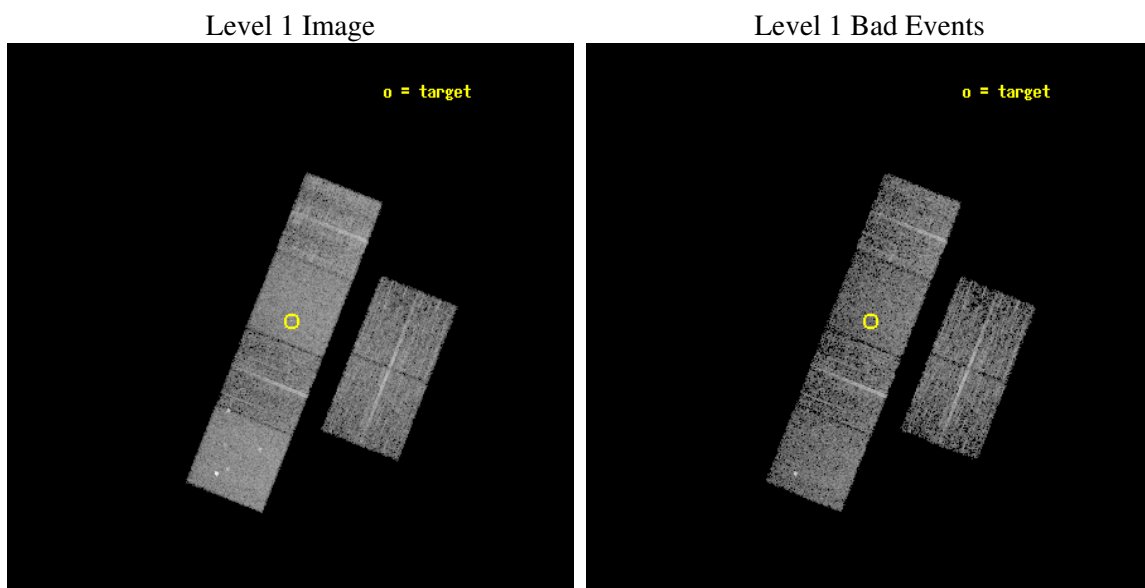
seq_num	700918
obs_id	4836
title	Constraining the Hard-X-ray Through Submm SEDs of a Complete Sample of Broad Absorption Line Quasars
observer	Dr. Sarah Gallagher
object	LBQS 2211-1915
dtcycle	0
cycle	P
ra_targ	333.657917
dec_targ	-19.016056
ra_nom	333.66002212264
dec_nom	-19.025530962201
roll_nom	291.52852379204
revision	2
ontime	5964.7999777794
livetime	5889.2700888894
ontime2	5964.7999777794
ontime3	5964.7999777794
ontime5	5964.7999777794
ontime6	5964.7999777794
ontime7	5964.7999777794
ontime8	5964.7999777794
l2events	58800



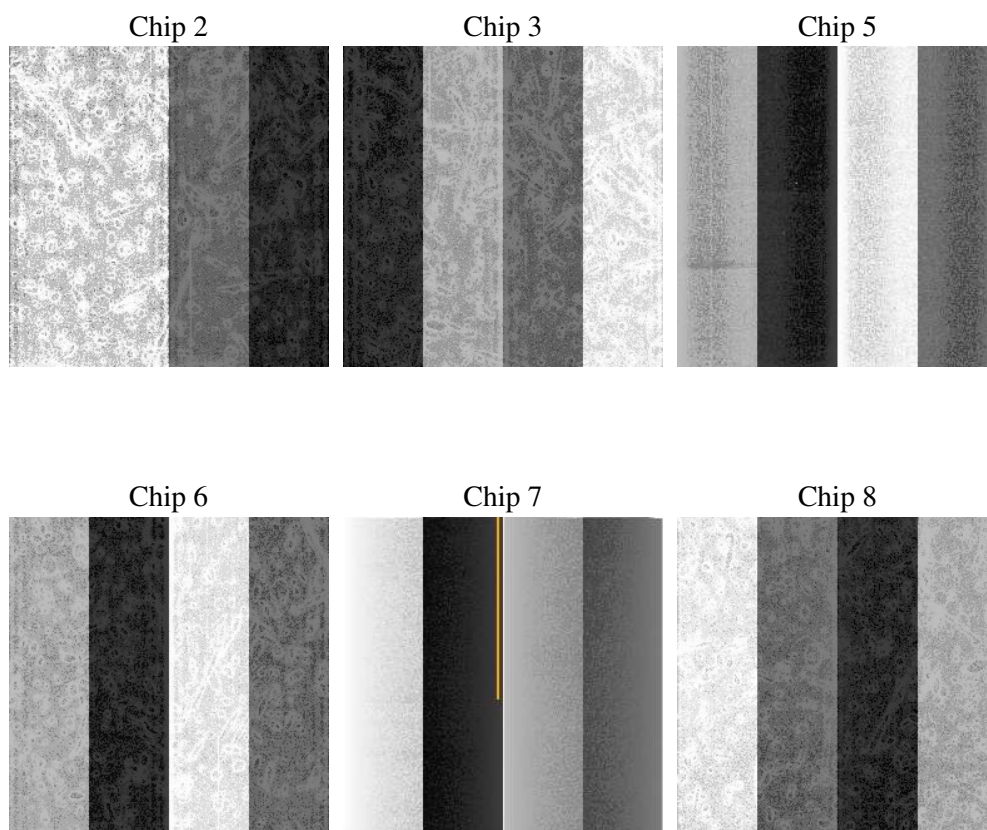
2 OBI

2.1 OBI

2.1.1 Images



2.1.2 Bias



2.1.3 Parameters

obi_num	0
ascdsver	7.6.8
caldsver	3.2.2
date	2006-06-28T04:38:06
revision	2

sched_exp_time	6000.000000
ontime	5969.9245088995
ontime2	5969.9245088995
ontime3	5969.9245088995
ontime5	5969.9245088995
ontime6	5969.9245088995
ontime7	5969.9245088995
ontime8	5969.9245088995
l1events	236945

2.1.4 Events

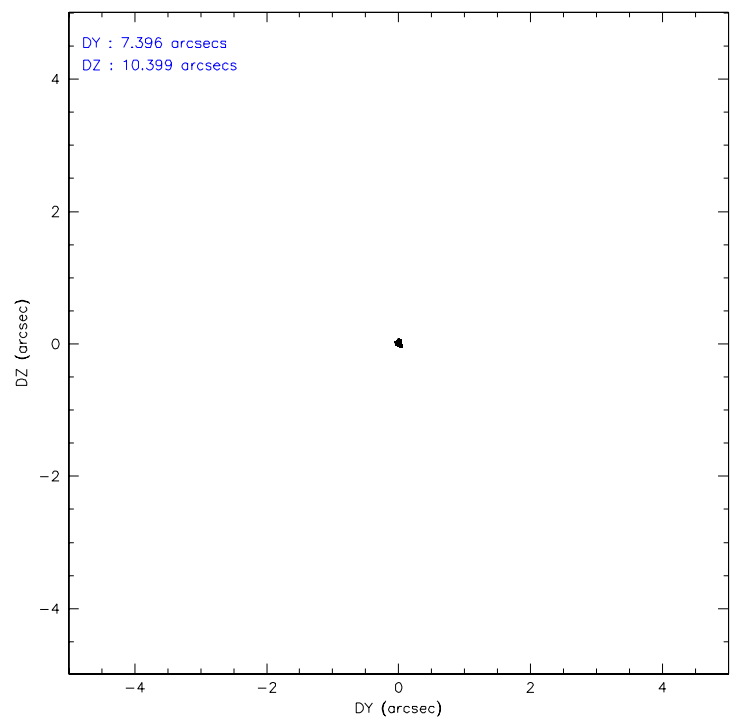
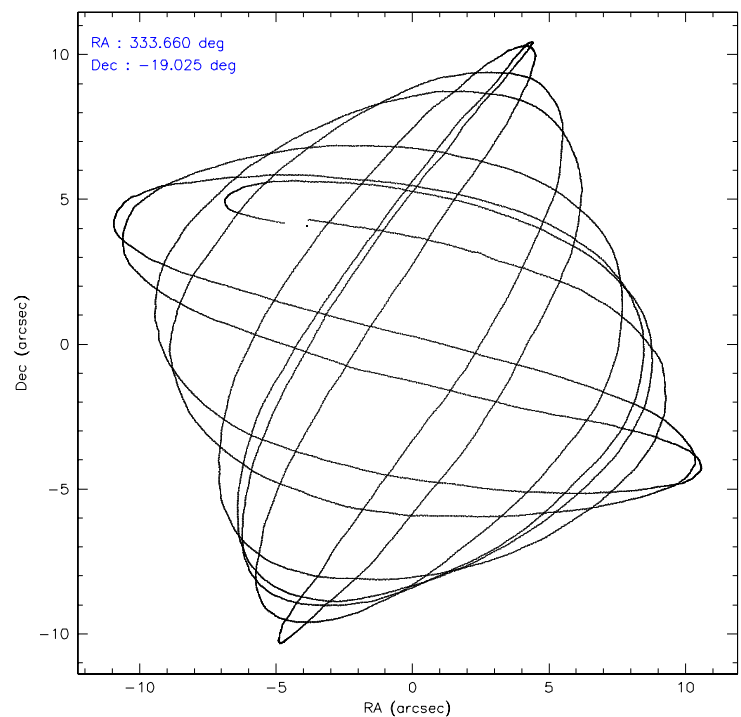
	ccd 2	ccd 3	ccd 5	ccd 6	ccd 7	ccd 8
level 1 events	31916	31943	50893	31613	45314	45266
rejected events	26911	27060	27152	26568	26586	31862
rejected %	84%	84%	53%	84%	58%	70%

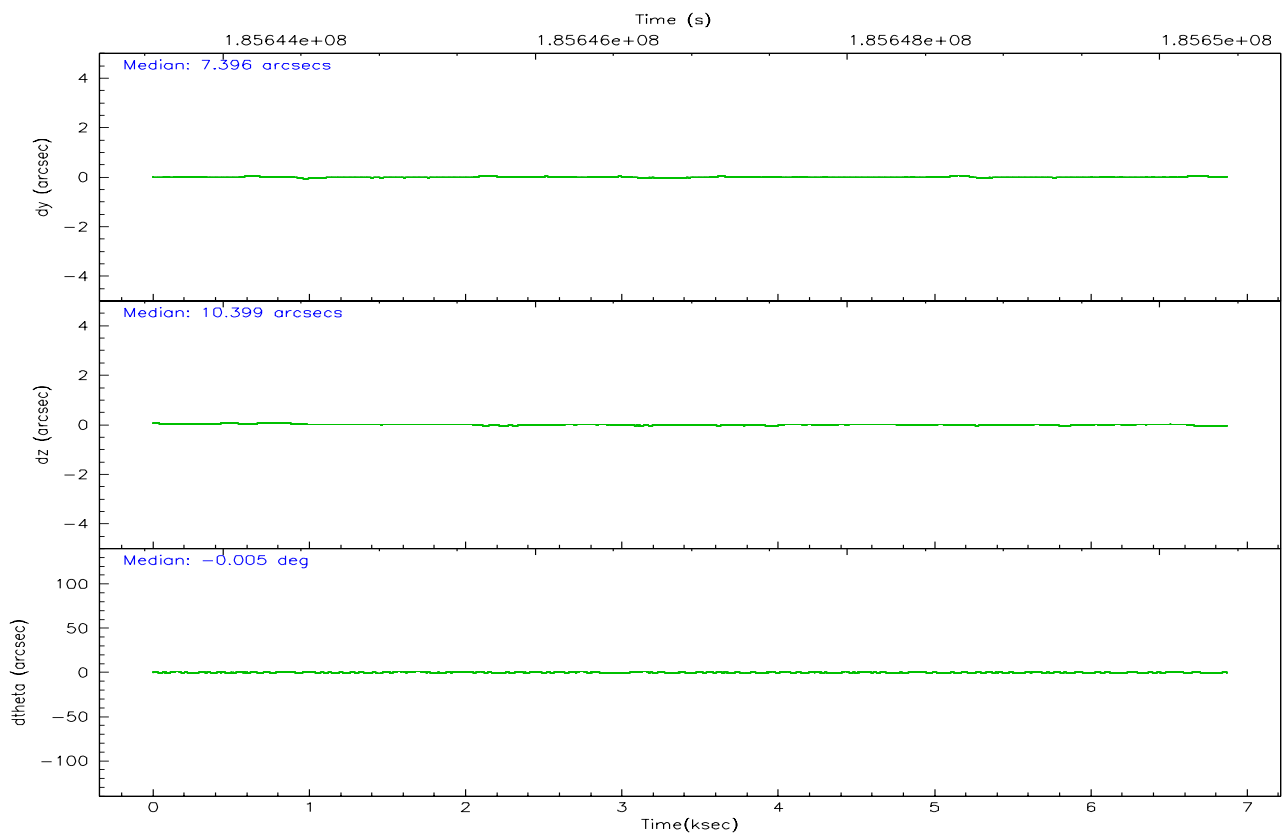
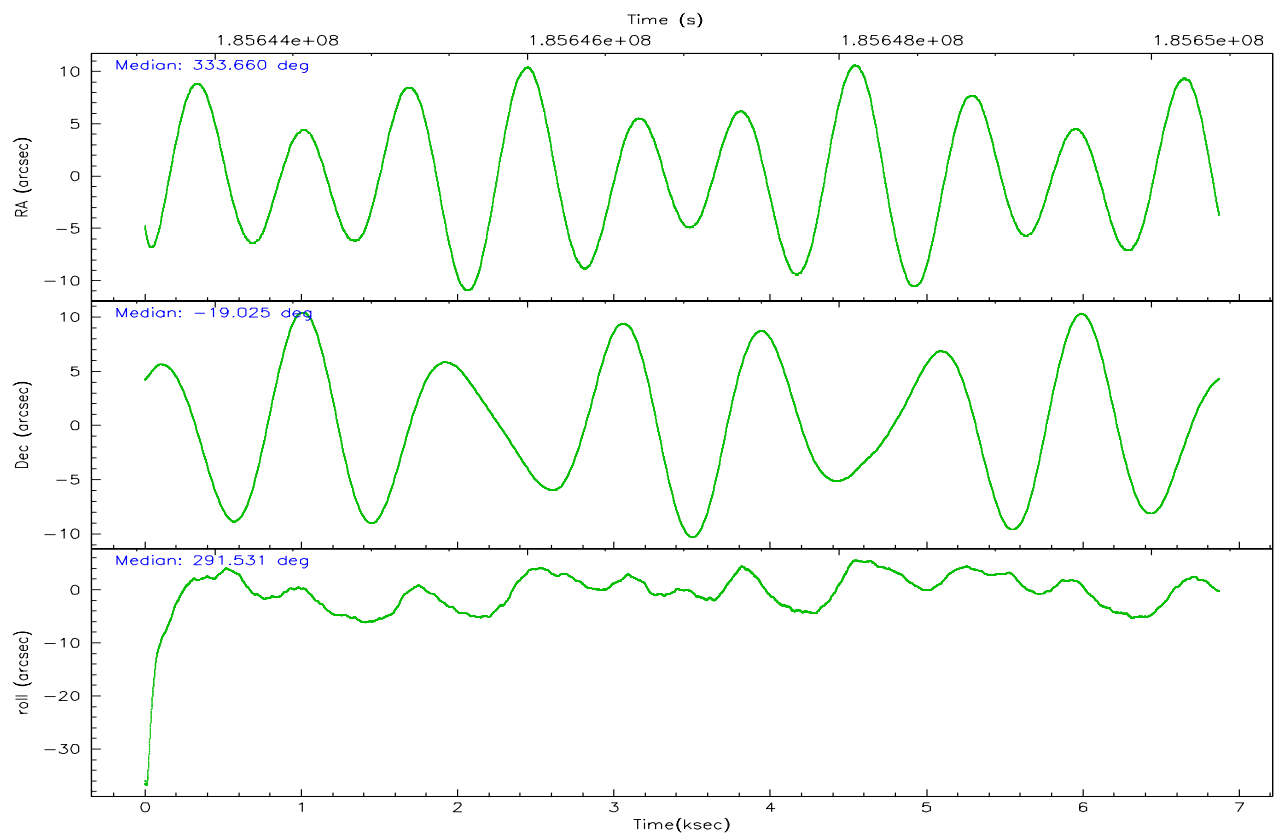
	ccd 2	ccd 3	ccd 5	ccd 6	ccd 7	ccd 8
grade 0 events	2410	2200	2020	2097	1381	4986
	7%	6%	3%	6%	3%	11%
grade 1 events	18	22	88	11	20	36
	0%	0%	0%	0%	0%	0%
grade 2 events	986	1070	7684	1232	4472	2490
	3%	3%	15%	3%	9%	5%
grade 3 events	371	369	631	368	1023	1664
	1%	1%	1%	1%	2%	3%
grade 4 events	391	372	584	397	946	1557
	1%	1%	1%	1%	2%	3%
grade 5 events	1217	1404	2312	1345	2949	1899
	3%	4%	4%	4%	6%	4%
grade 6 events	852	877	12837	953	10926	2719
	2%	2%	25%	3%	24%	6%
grade 7 events	25671	25629	24737	25210	23597	29915
	80%	80%	48%	79%	52%	66%

2.2 Compared Parameters

Parameter	Planned	Actual	Parameter	Planned	Actual
Instrument	ACIS	ACIS	Obspar format version number	6	6
Detector	ACIS-235678	ACIS-235678	Obspar file type	PREDICTED	ACTUAL
Grating	NONE	NONE	Obspar update status	NONE	UPDATED
Data mode	FAINT	FAINT	On-chip summing requested	N	N
Observation mode	POINTING	POINTING	Subarray requested	NONE	NONE
Pointing RA	333.637152	333.6600221226426	Alternating exposures requested	N	N
Pointing Dec	-19.008884	-19.02553096220087	Primary exposure time	0.000000	3.2
Pointing Roll	291.364498	291.5285237920416			
SIM focus pos (mm)	-0.684267	-0.6828225247311905			
SIM defocus (mm)	0	0.001444936568705701			
SIM translation stage pos (mm)	-190.132523	-190.1400660498719			
SIM translation stage offset (mm)	0	0.00754346686406393			
Observation start time	185644424.184000	185643117.22662			
Observation start date	2003-11-19T15:52:40	2003-11-19T15:31:57			
Observation end time	185650424.184000	185650728.87695			
Observation end date	2003-11-19T17:32:40	2003-11-19T17:38:48			
Read mode	TIMED	TIMED			

2.3 Aspect



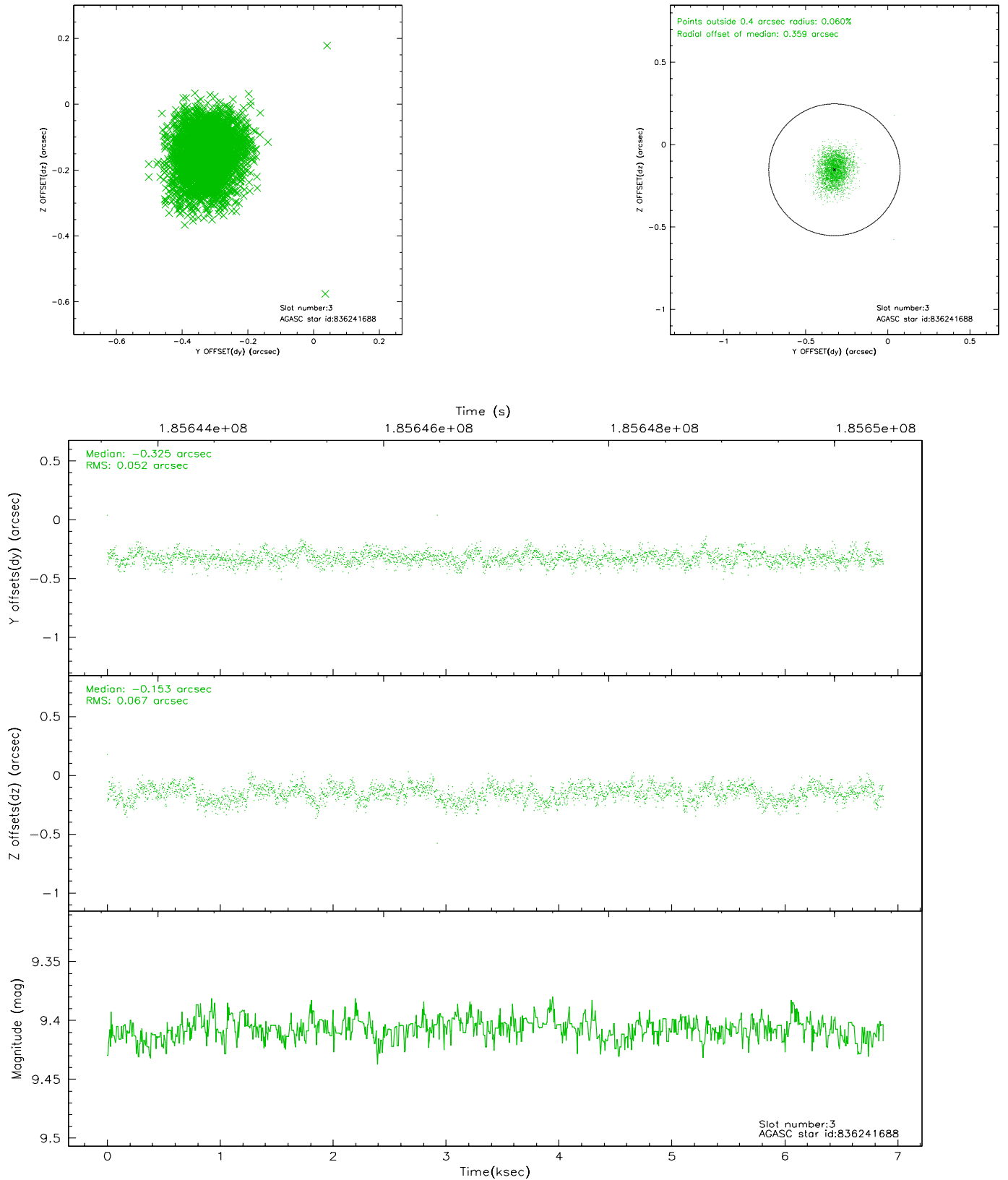


Slot Statistics

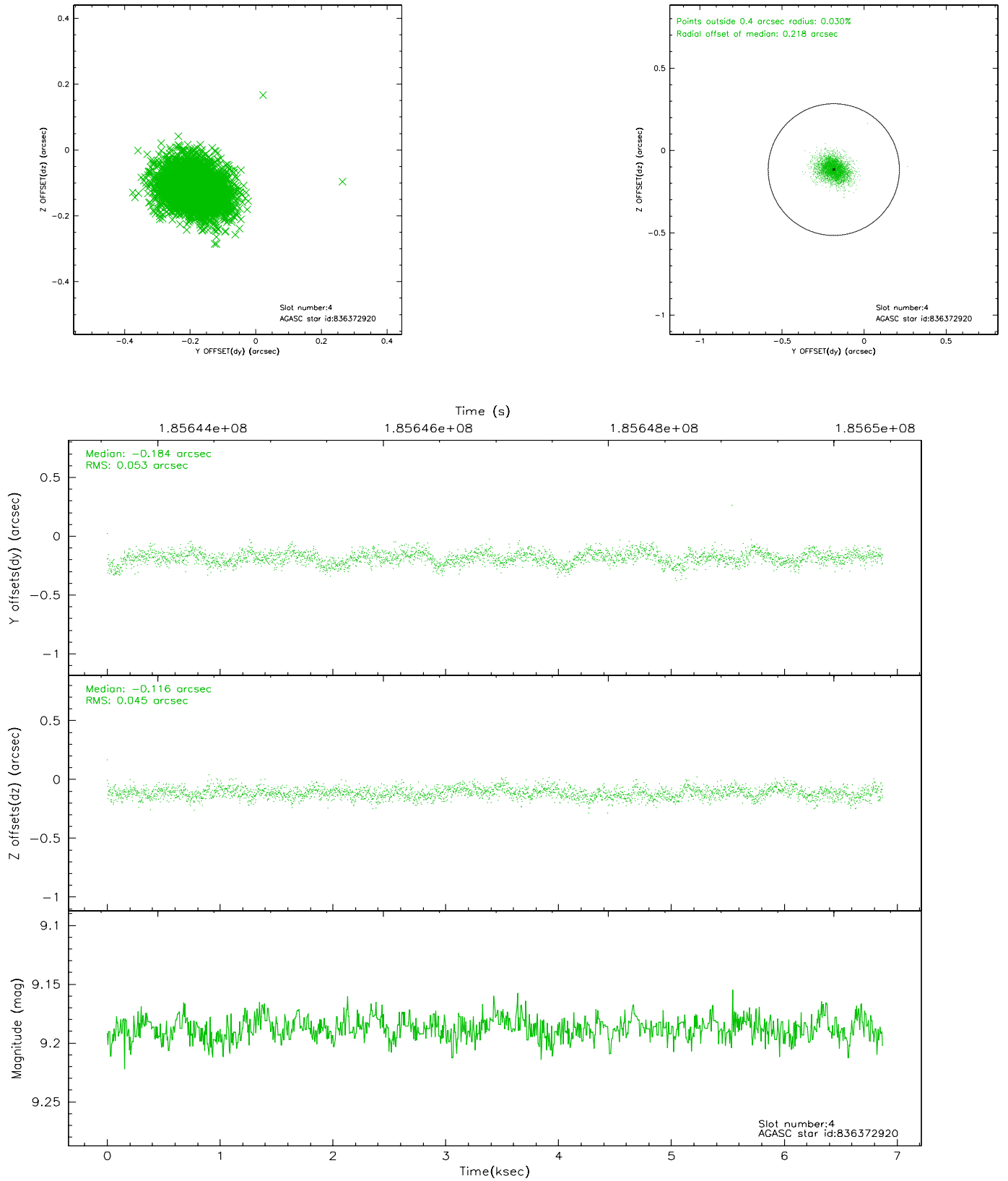
slot	status	id	mag	n_pts	med_dy	med_dz	dr1	dr2	ra	dec	mean_y	mean_z
0	FID	ACIS-S-2	7.10	1677	-0.032	0.014	0.006	0.010	0.000000	0.000000	-760.16	-1731.66
1	FID	ACIS-S-4	7.20	1676	0.028	0.011	0.005	0.008	0.000000	0.000000	2152.76	176.01
2	FID	ACIS-S-5	7.23	1677	-0.027	-0.017	0.006	0.011	0.000000	0.000000	-1811.95	170.53
3	GUIDE	836241688	9.41	3352	-0.325	-0.153	0.091	0.145	332.859450	-18.668159	-2103.51	-2025.77
4	GUIDE	836372920	9.19	3354	-0.184	-0.116	0.072	0.121	333.426953	-18.454923	-2119.00	57.04
5	GUIDE	836377760	9.88	3352	0.264	0.215	0.126	0.199	334.344634	-19.399355	2188.66	1723.57
6	GUIDE	836381040	7.29	3354	-0.000	-0.073	0.058	0.096	333.585370	-19.248941	741.70	-478.53
7	GUIDE	836373360	9.84	3351	0.249	0.122	0.127	0.216	334.089326	-19.531475	2313.44	742.37

2.4 Star Slots

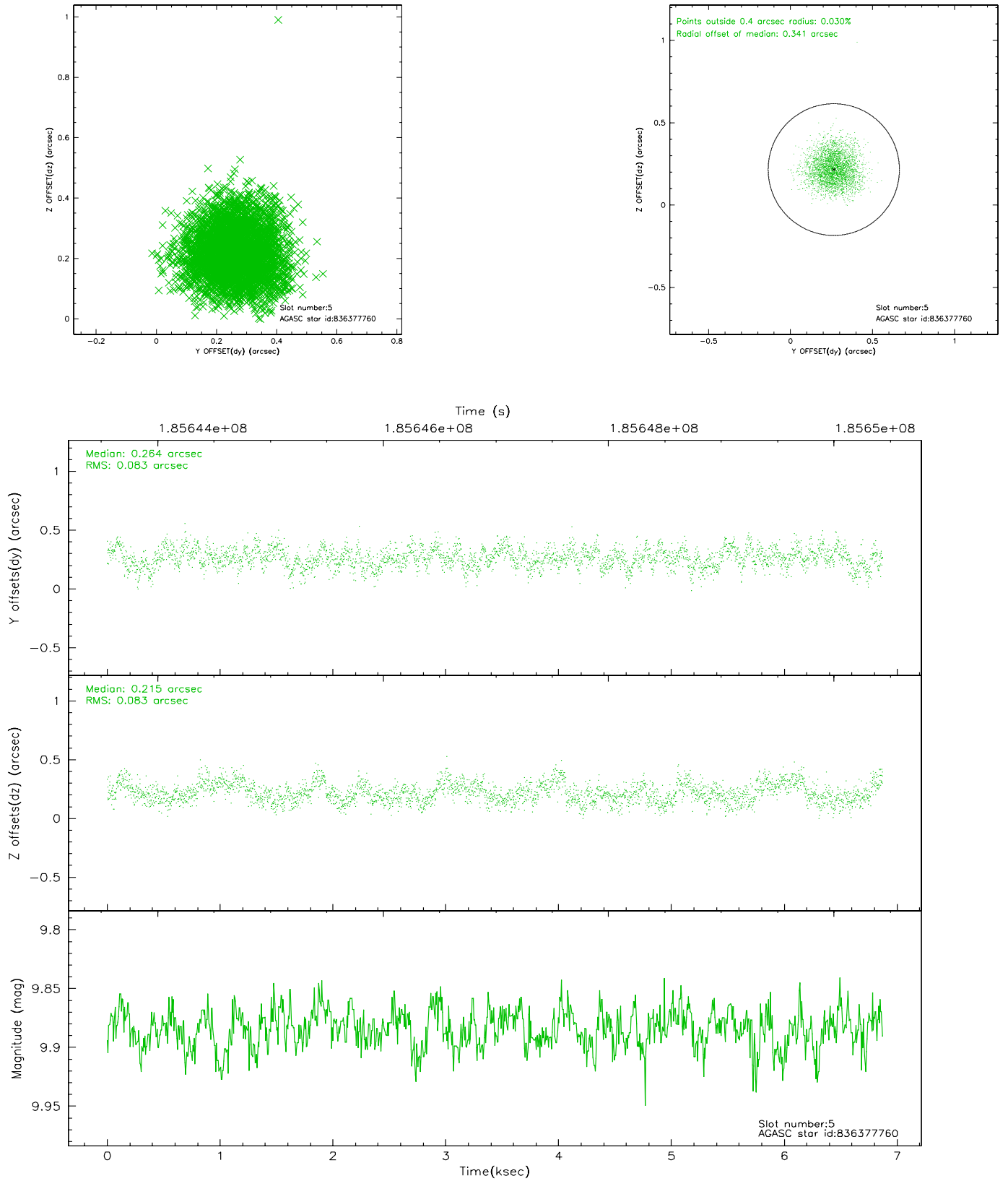
2.4.1 Slot 3



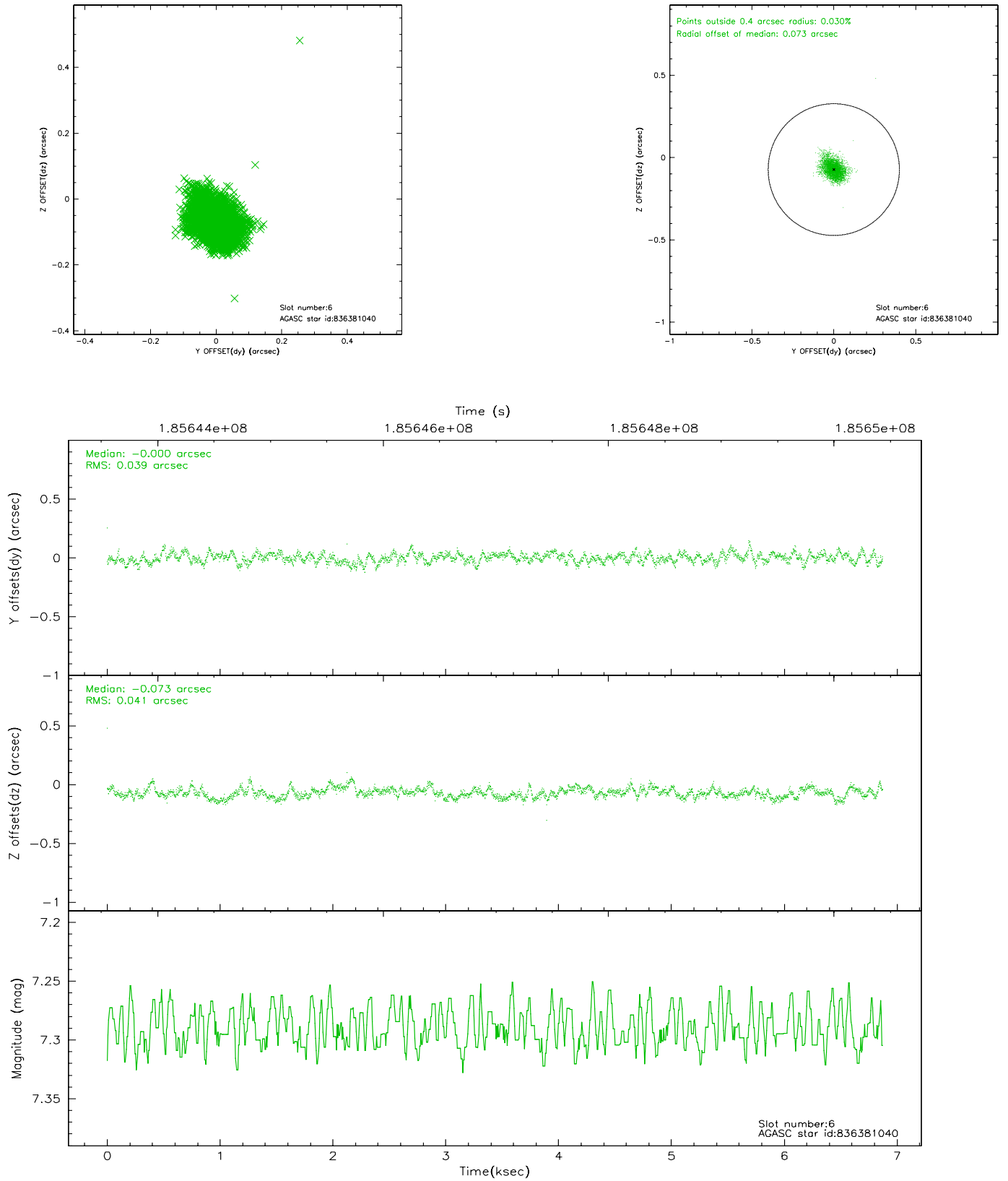
2.4.2 Slot 4



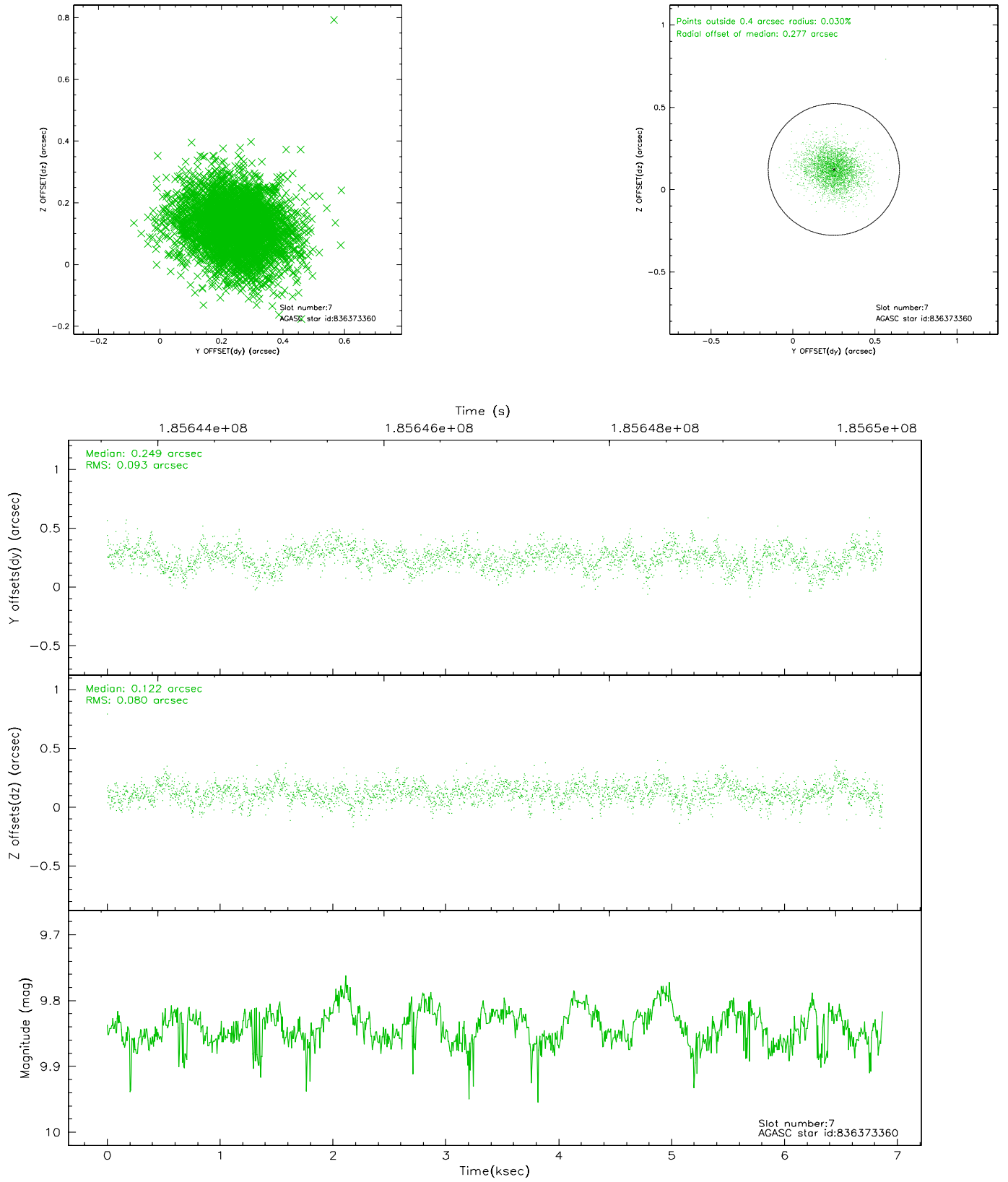
2.4.3 Slot 5



2.4.4 Slot 6

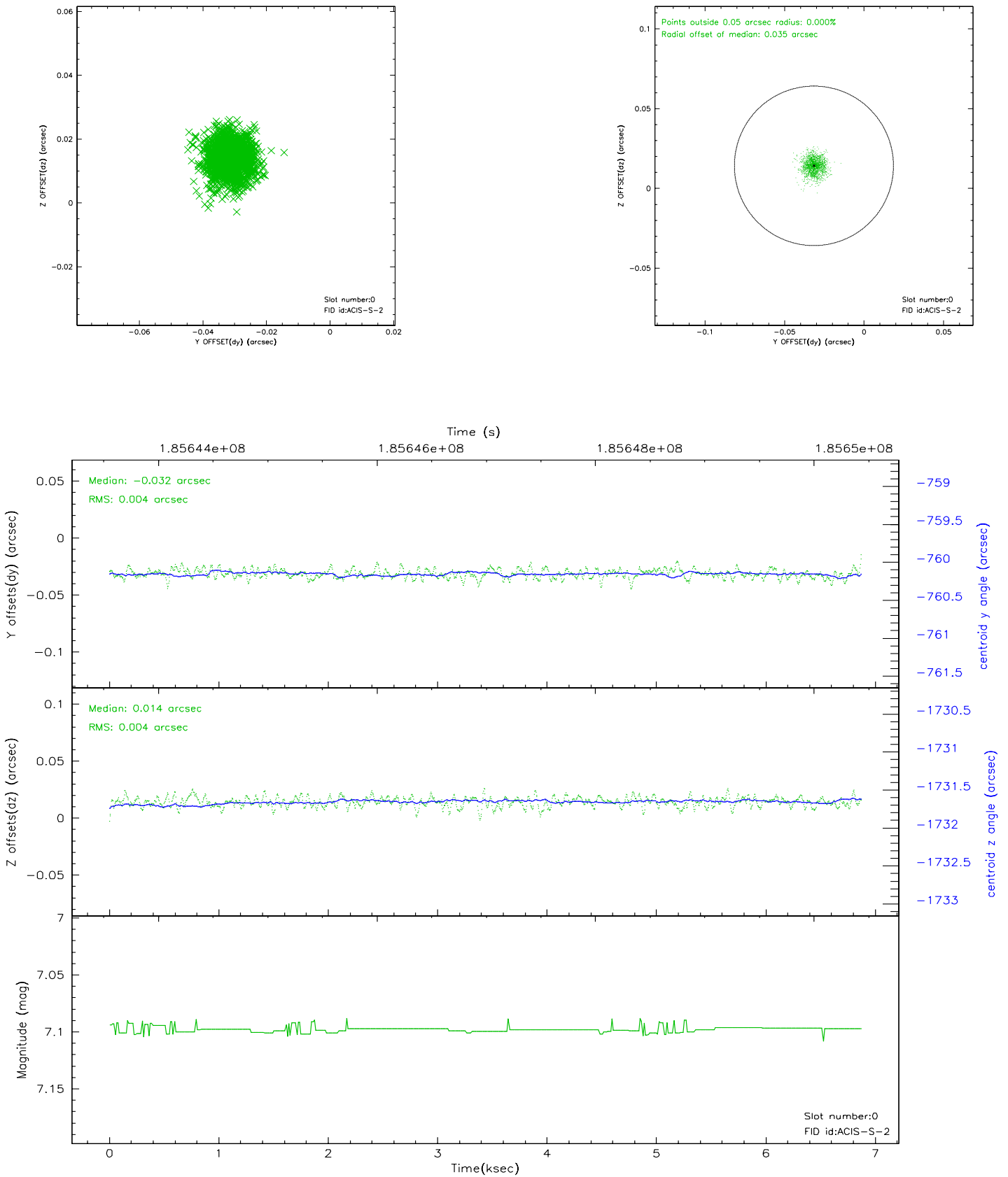


2.4.5 Slot 7

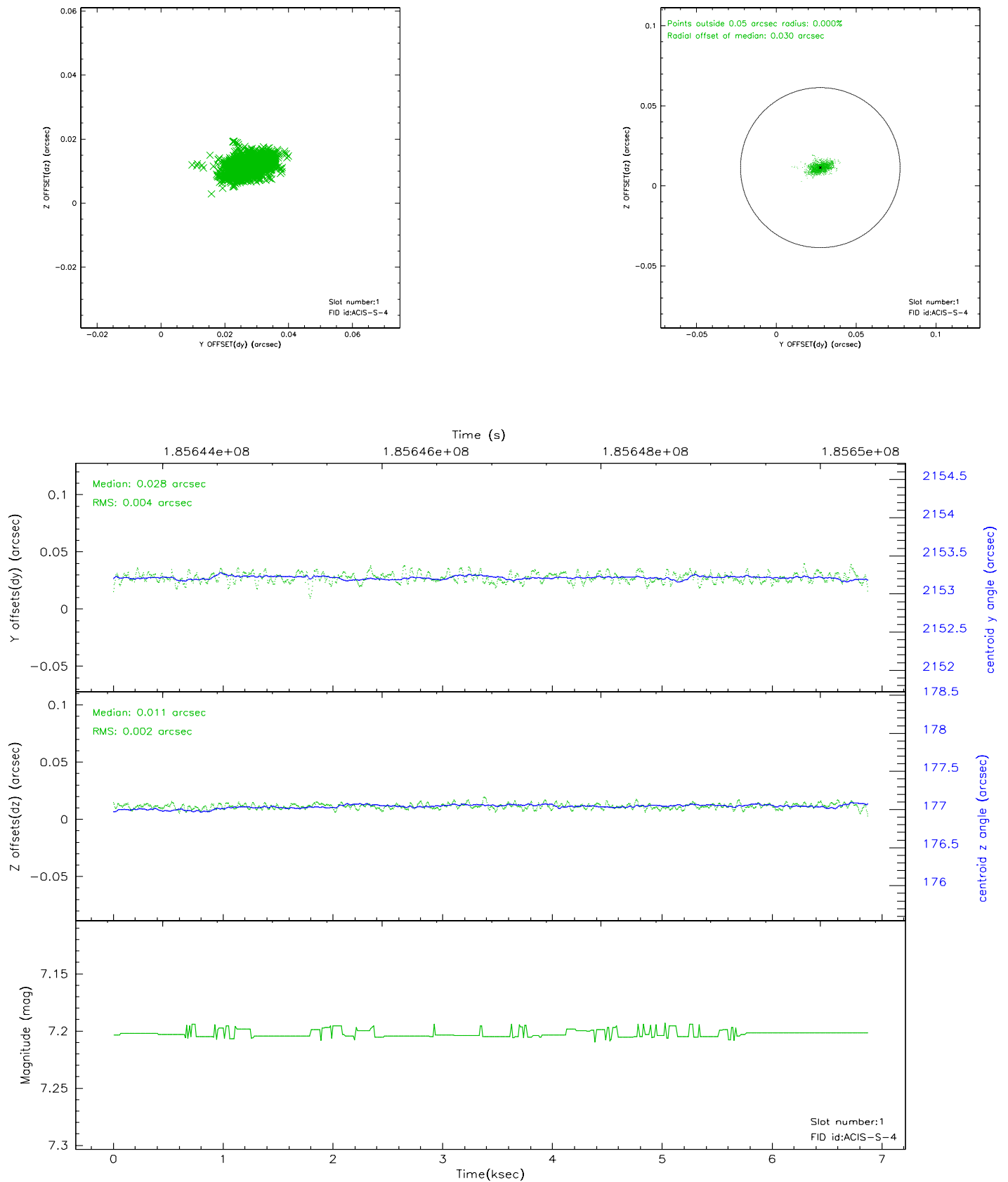


2.5 FID Slots

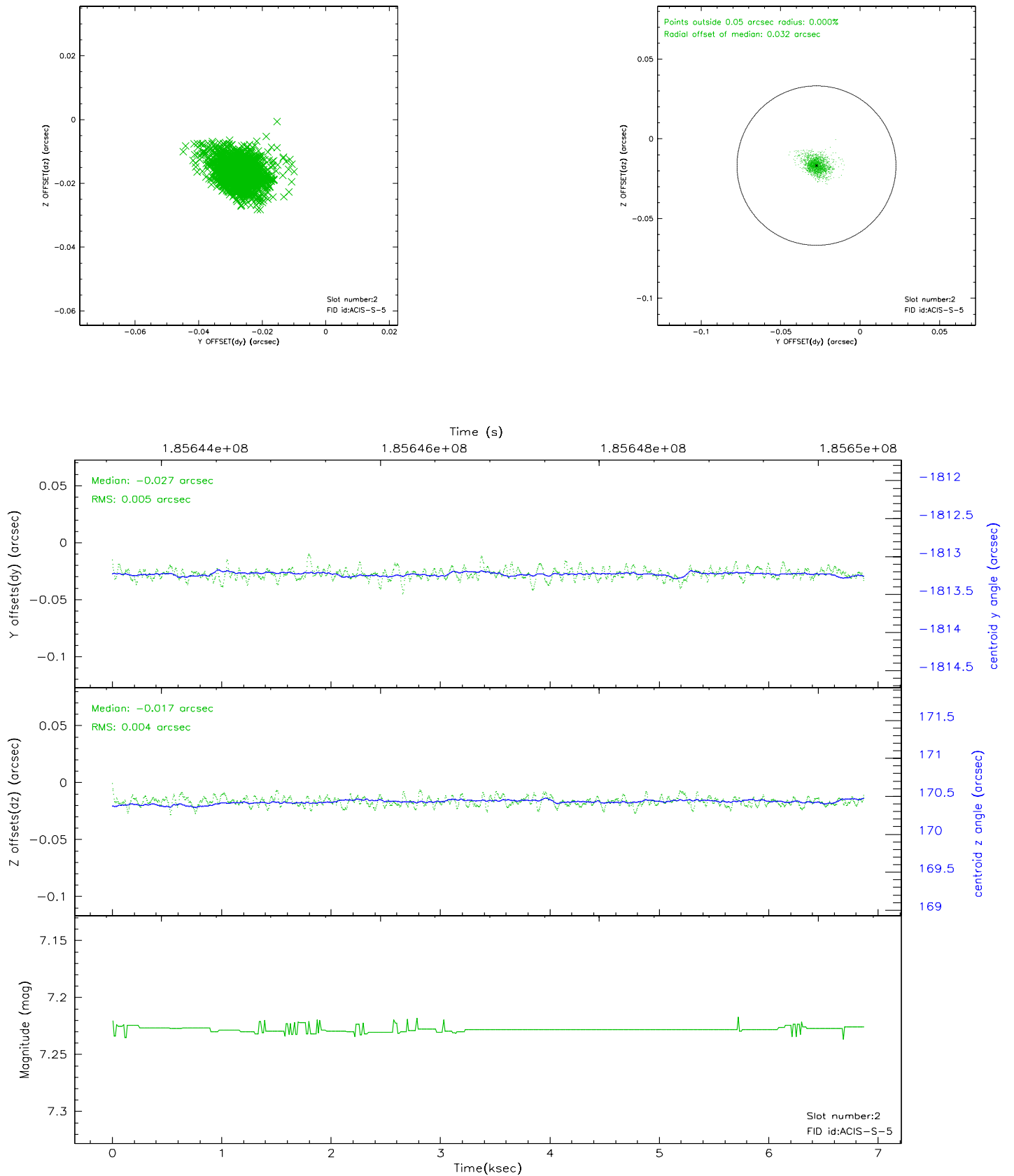
2.5.1 Slot 0



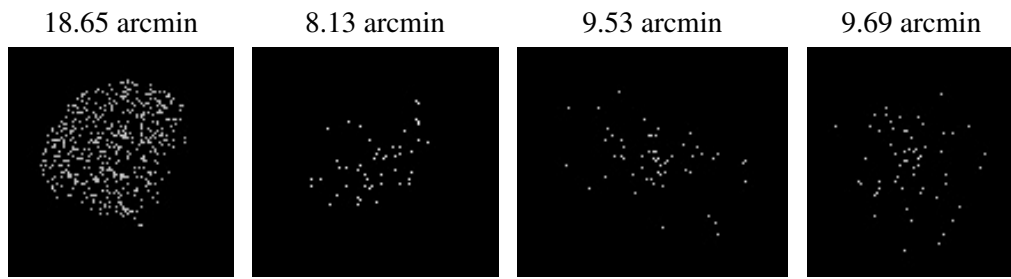
2.5.2 Slot 1



2.5.3 Slot 2



3 Point Sources



A Summary

A.1 Status

V&V Scientist	Beth Sundheim
V&V Date (YYYY-MM-DD)	2006.06.28
V&V Edition	1
V&V Disposition and Status	OK
V&V Charge Time	5.964

A.2 Comments