

V&V Reference Report

L2 ASCDS Version : 7.6.7.2

Observation 4830 - L2 Version 001
Chandra X-Ray Center

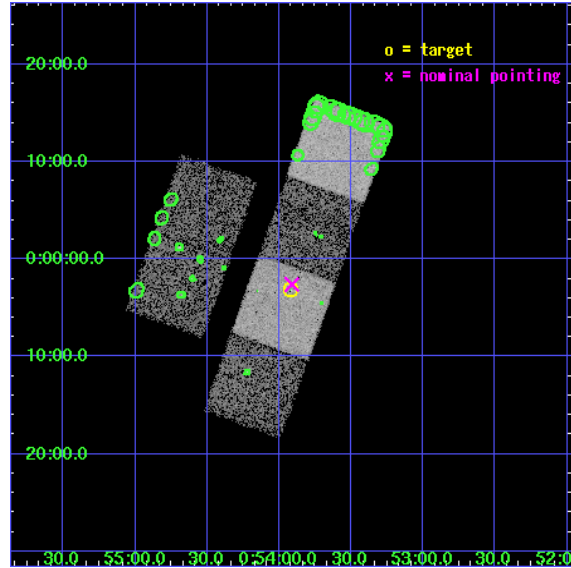
L2 Processing Date : Apr 26 2006

Contents

1	Front	2
2	OBI	3
2.1	OBI	3
2.1.1	Images	3
2.1.2	Bias	3
2.1.3	Parameters	4
2.1.4	Events	4
2.2	Compared Parameters	5
2.3	Aspect	6
2.4	Star Slots	9
2.4.1	Slot 3	9
2.4.2	Slot 4	10
2.4.3	Slot 5	11
2.4.4	Slot 6	12
2.4.5	Slot 7	13
2.5	FID Slots	14
2.5.1	Slot 0	14
2.5.2	Slot 1	15
2.5.3	Slot 2	16
3	Point Sources	17
A	Summary	18
A.1	Status	18
A.2	Comments	18

1 Front

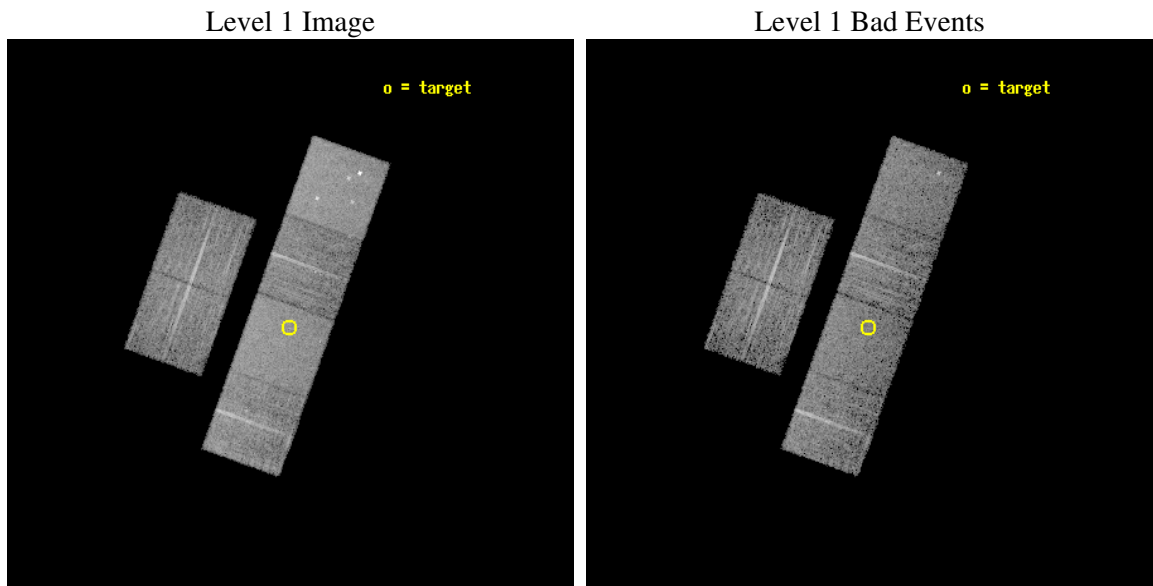
seq_num	700912
obs_id	4830
title	Constraining the Hard-X-ray Through Submm SEDs of a Complete Sample of Broad Absorption Line Quasars
observer	Dr. Sarah Gallagher
object	LBQS 0051-0019
dtcycle	0
cycle	P
ra_targ	13.479583
dec_targ	-0.052639
ra_nom	13.477901109041
dec_nom	-0.043202764446895
roll_nom	109.76217539757
revision	2
ontime	7196.7999731898
livetime	7105.6697585366
ontime2	7196.7999731898
ontime3	7193.5589730144
ontime5	7196.7999731898
ontime6	7196.7999731898
ontime7	7196.7999731898
ontime8	7196.7999731898
l2events	75899



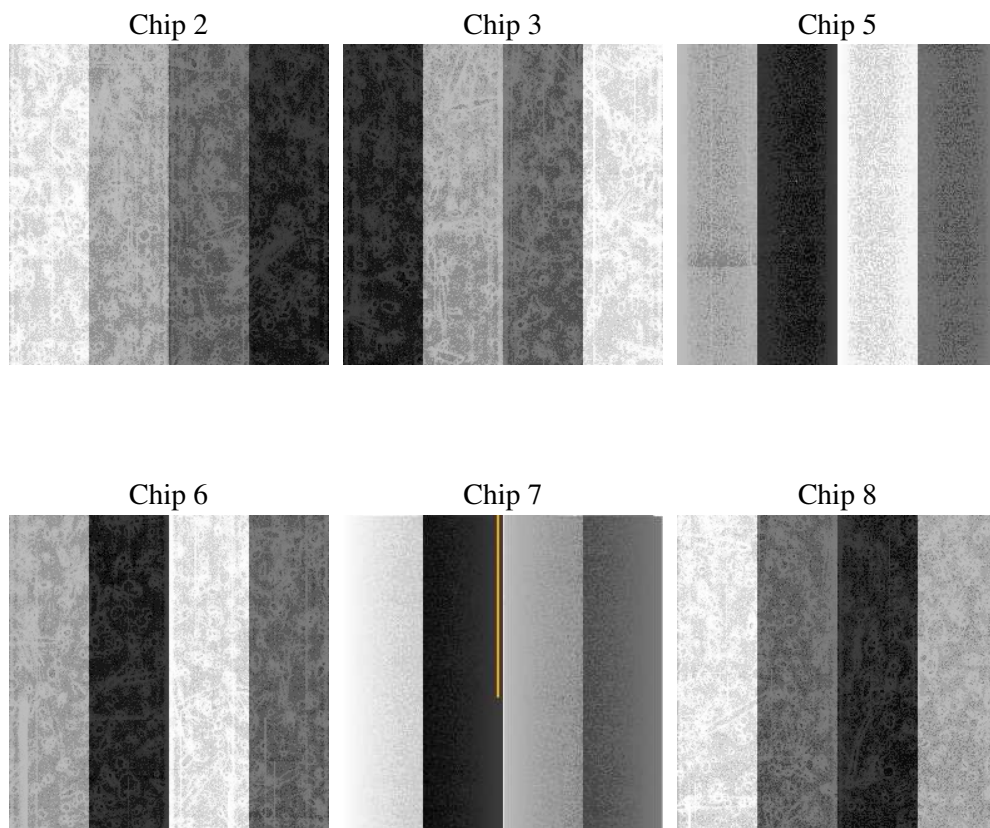
2 OBI

2.1 OBI

2.1.1 Images



2.1.2 Bias



2.1.3 Parameters

obi_num	2
ascdsver	7.6.7.2
caldbver	3.2.1
date	2006-04-26T14:00:06
revision	2

sched_exp_time	7238.737000
ontime	7201.5129403174
ontime2	7201.5129204094
ontime3	7201.5129403174
ontime5	7201.5129403174
ontime6	7201.5129403174
ontime7	7201.5129403174
ontime8	7204.7539404929
l1events	347749

2.1.4 Events

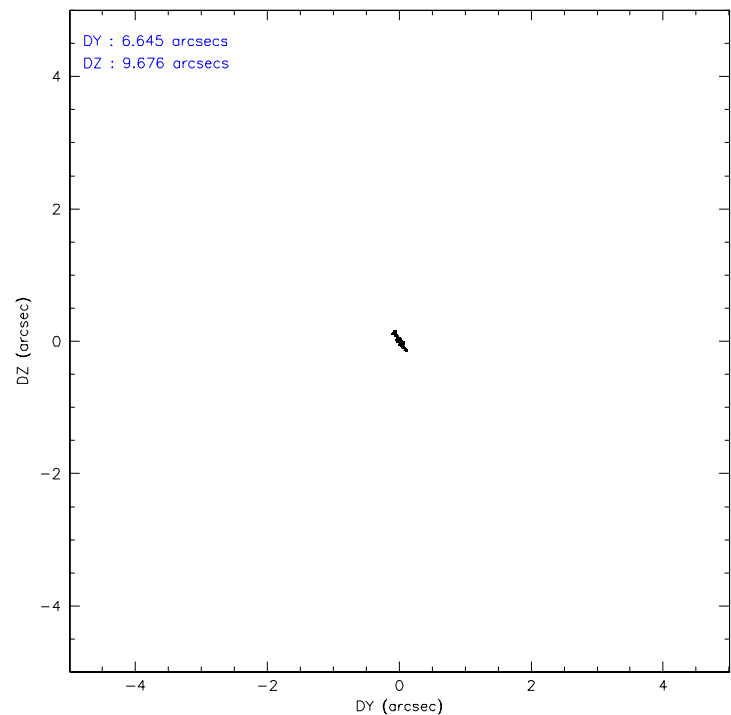
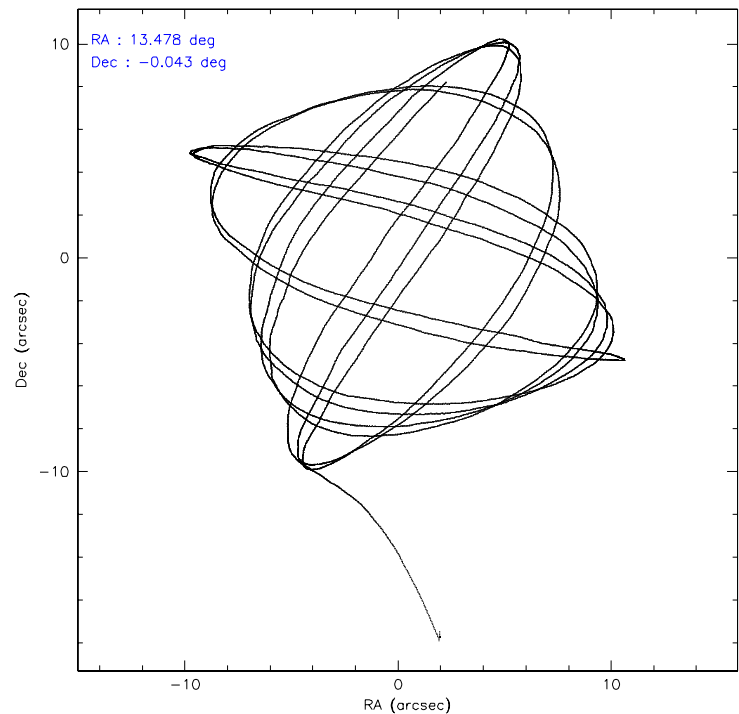
	ccd 2	ccd 3	ccd 5	ccd 6	ccd 7	ccd 8
level 1 events	49616	47587	75041	48843	66676	59986
rejected events	43902	41663	41461	42998	41430	47013
rejected %	88%	87%	55%	88%	62%	78%

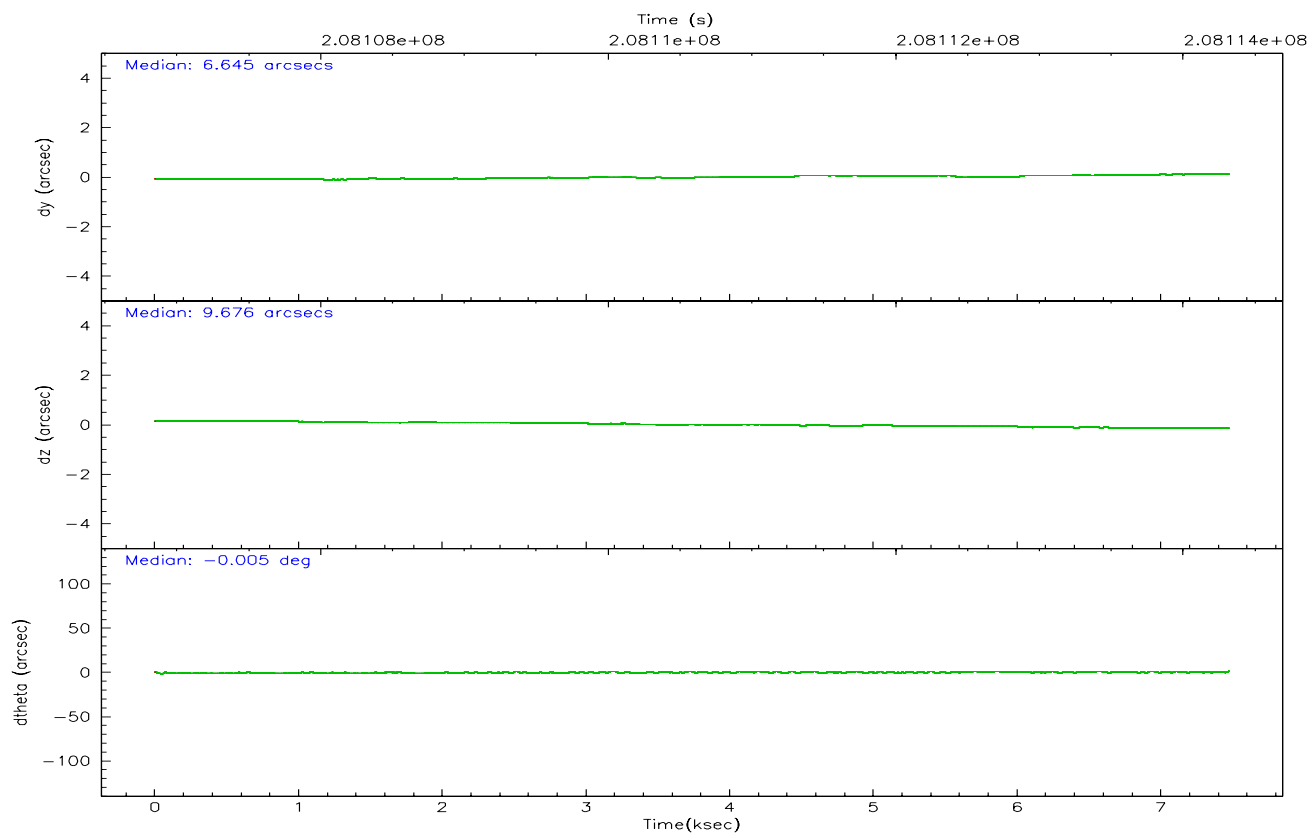
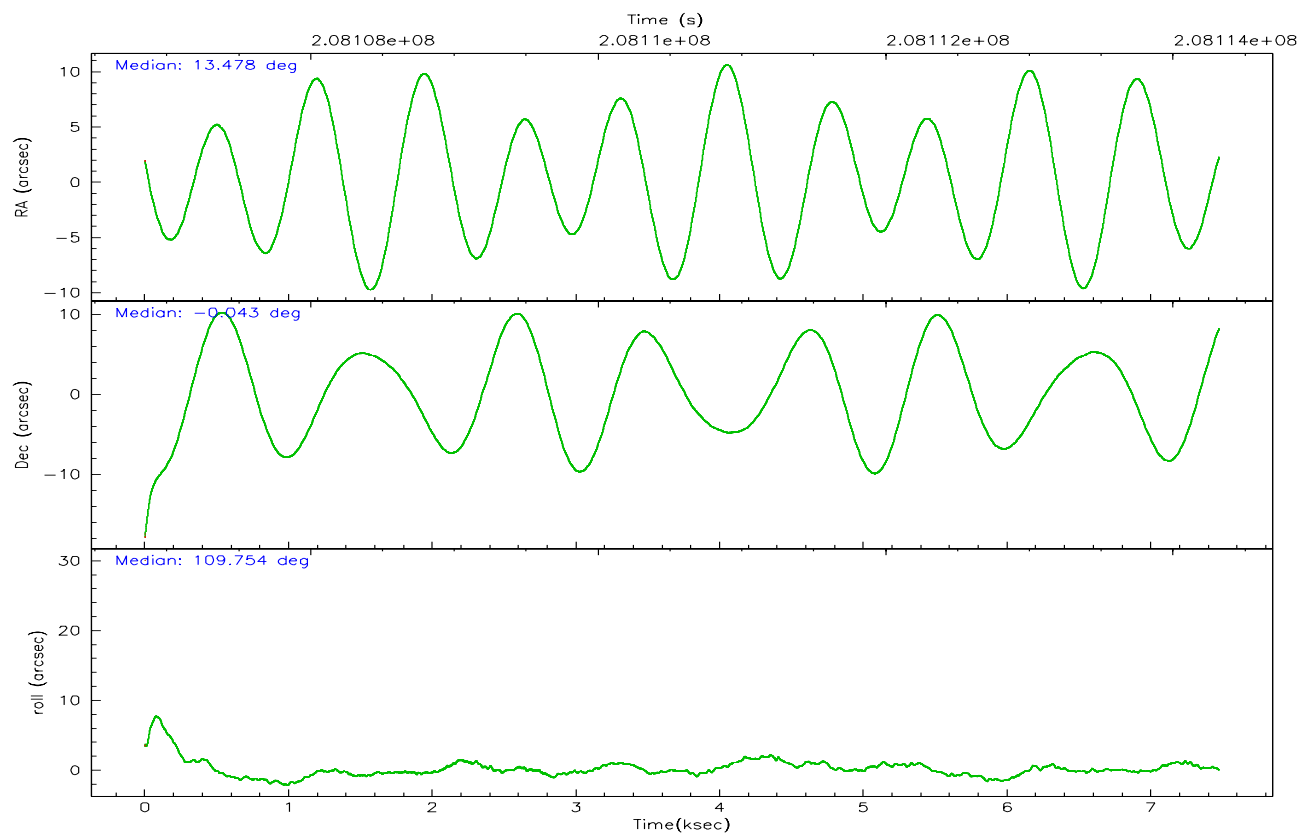
	ccd 2	ccd 3	ccd 5	ccd 6	ccd 7	ccd 8
grade 0 events	2511	2736	2839	2345	1345	4132
	5%	5%	3%	4%	2%	6%
grade 1 events	39	36	56	26	39	35
	0%	0%	0%	0%	0%	0%
grade 2 events	1158	1097	10772	1166	6196	2760
	2%	2%	14%	2%	9%	4%
grade 3 events	521	554	707	592	1307	1405
	1%	1%	0%	1%	1%	2%
grade 4 events	565	569	646	539	1259	1316
	1%	1%	0%	1%	1%	2%
grade 5 events	2047	2119	3539	2200	4388	2911
	4%	4%	4%	4%	6%	4%
grade 6 events	964	973	18628	1206	15145	3362
	1%	2%	24%	2%	22%	5%
grade 7 events	41811	39503	37854	40769	36997	44065
	84%	83%	50%	83%	55%	73%

2.2 Compared Parameters

Parameter	Planned	Actual	Parameter	Planned	Actual
Instrument	ACIS	ACIS	Obspar format version number	6	6
Detector	ACIS-235678	ACIS-235678	Obspar file type	PREDICTED	ACTUAL
Grating	NONE	NONE	Obspar update status	NONE	UPDATED
Data mode	FAINT	FAINT	On-chip summing requested	N	N
Observation mode	POINTING	POINTING	Subarray requested	NONE	NONE
Pointing RA	13.498982	13.47790110904084	Alternating exposures requested	N	N
Pointing Dec	-0.060408	-0.043202764446895	Primary exposure time	0.000000	3.2
Pointing Roll	109.605568	109.7621753975683			
SIM focus pos (mm)	-0.684267	-0.6828225247311905			
SIM defocus (mm)	0	0.001444936568705701			
SIM translation stage pos (mm)	-190.132523	-190.1400660498719			
SIM translation stage offset (mm)	0	0.00754346686406393			
Observation start time	208107085.184000	208106093.15067			
Observation start date	2004-08-05T15:30:21	2004-08-05T15:14:53			
Observation end time	208114324.184000	208114547.86354			
Observation end date	2004-08-05T17:31:00	2004-08-05T17:35:47			
Read mode	TIMED	TIMED			

2.3 Aspect



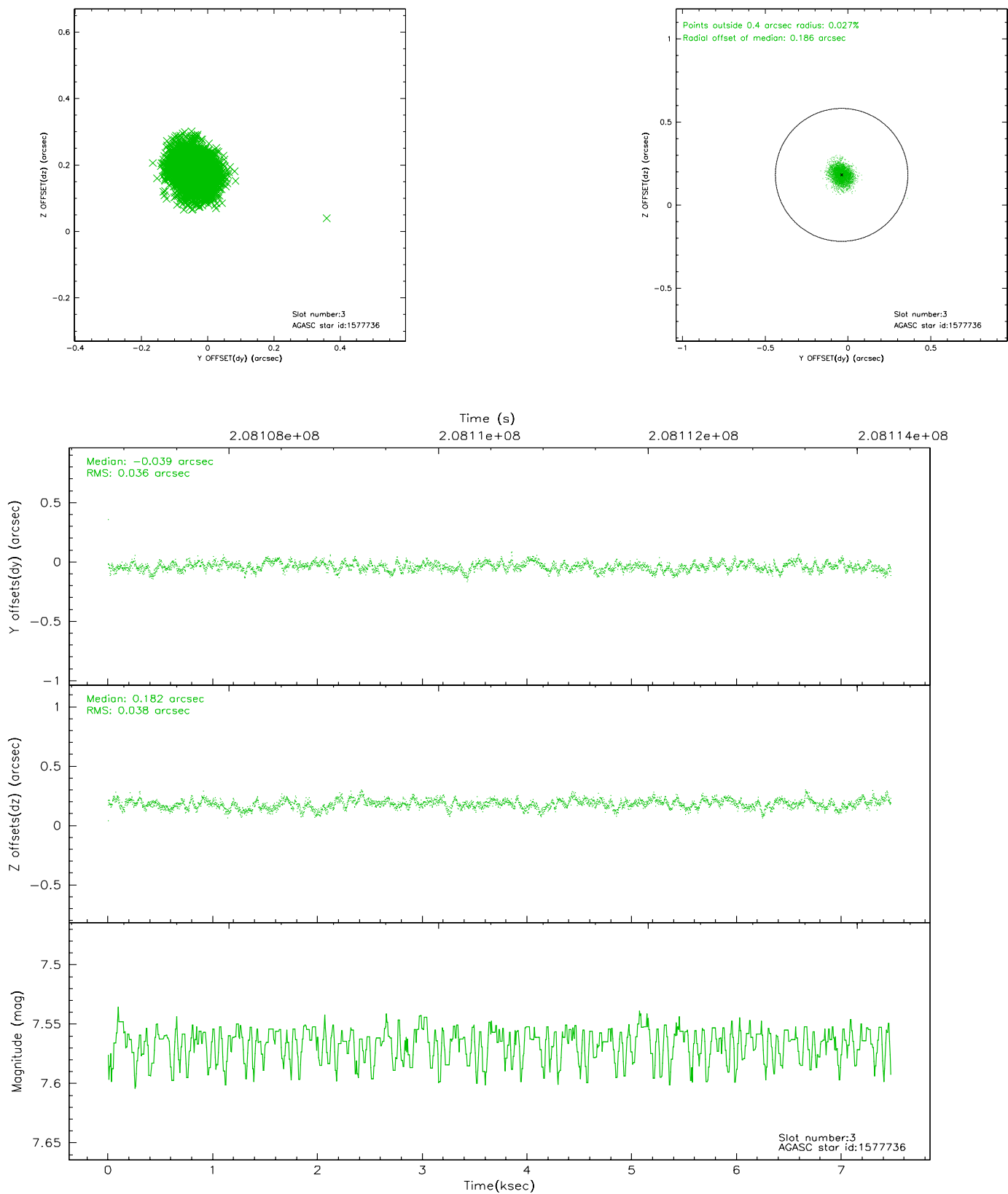


Slot Statistics

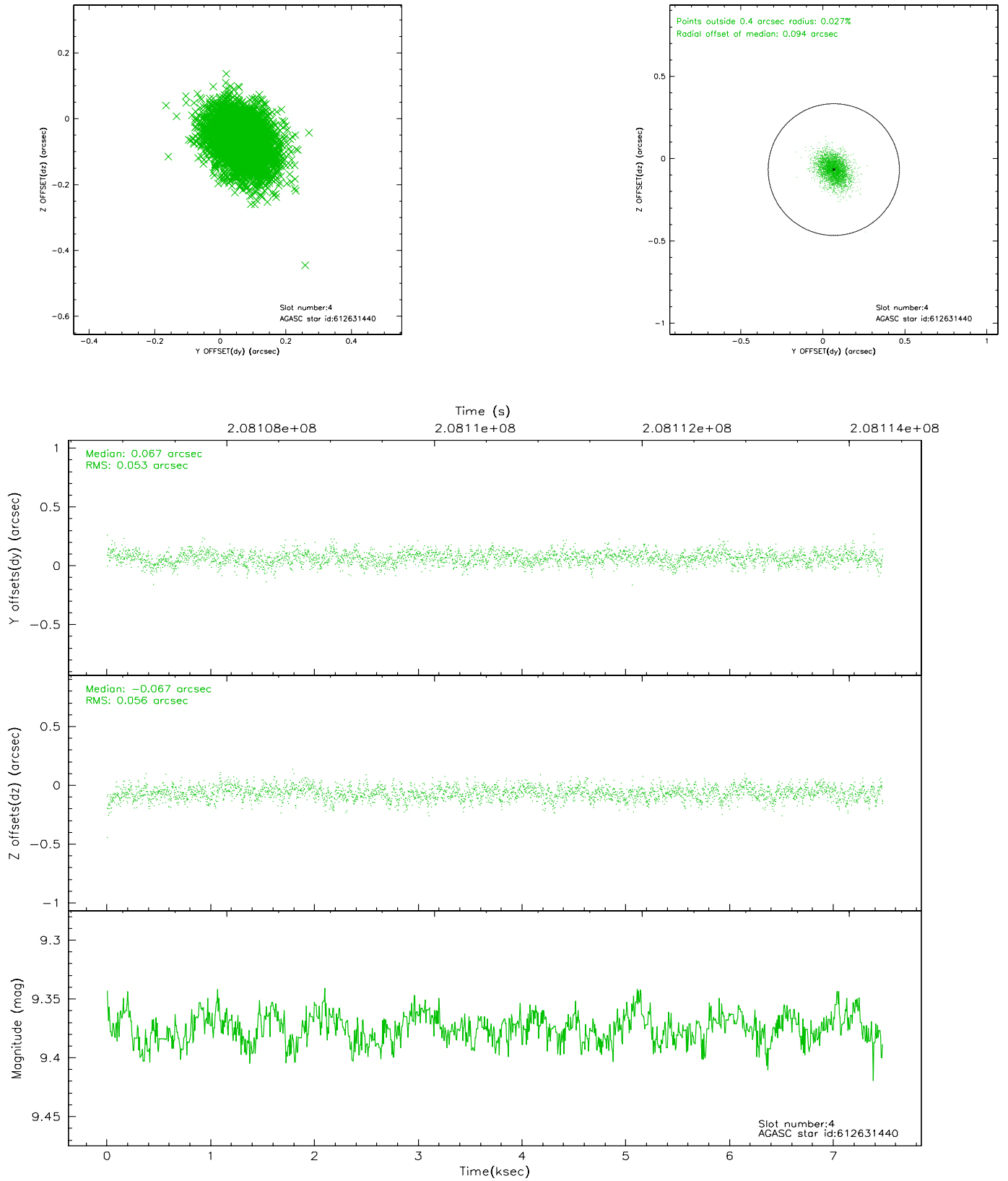
slot	status	id	mag	n_pts	med_dy	med_dz	dr1	dr2	ra	dec	mean_y	mean_z
0	FID	ACIS-S-2	7.10	1824	-0.037	0.000	0.011	0.019	0.000000	0.000000	-759.40	-1730.94
1	FID	ACIS-S-4	7.20	1824	0.027	0.017	0.010	0.031	0.000000	0.000000	2153.57	176.82
2	FID	ACIS-S-5	7.23	1824	-0.023	-0.010	0.009	0.018	0.000000	0.000000	-1811.28	171.27
3	GUIDE	1577736	7.56	3645	-0.039	0.182	0.055	0.089	13.888277	0.019580	-198.67	-1416.49
4	GUIDE	612631440	9.37	3643	0.067	-0.067	0.082	0.136	13.345518	-0.775803	-2240.68	1384.01
5	GUIDE	612633056	9.40	3643	-0.064	-0.179	0.079	0.130	13.071720	-0.364507	-515.92	1816.43
6	GUIDE	612637176	9.33	3647	0.005	-0.059	0.084	0.136	13.226494	-0.447694	-984.23	1392.43
7	GUIDE	612634776	9.32	3642	0.031	0.125	0.084	0.133	14.252004	-0.472149	-2305.64	-2056.08

2.4 Star Slots

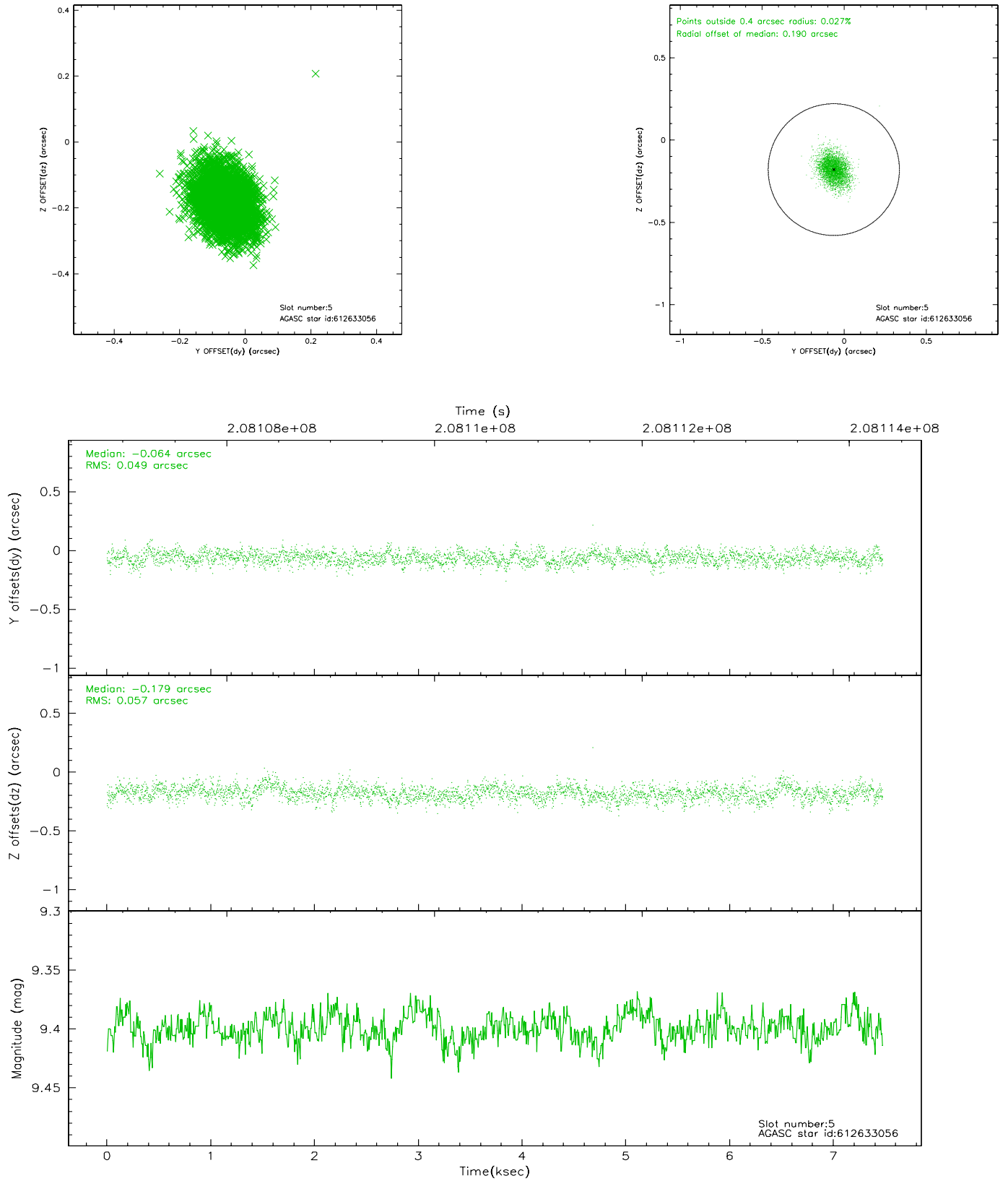
2.4.1 Slot 3



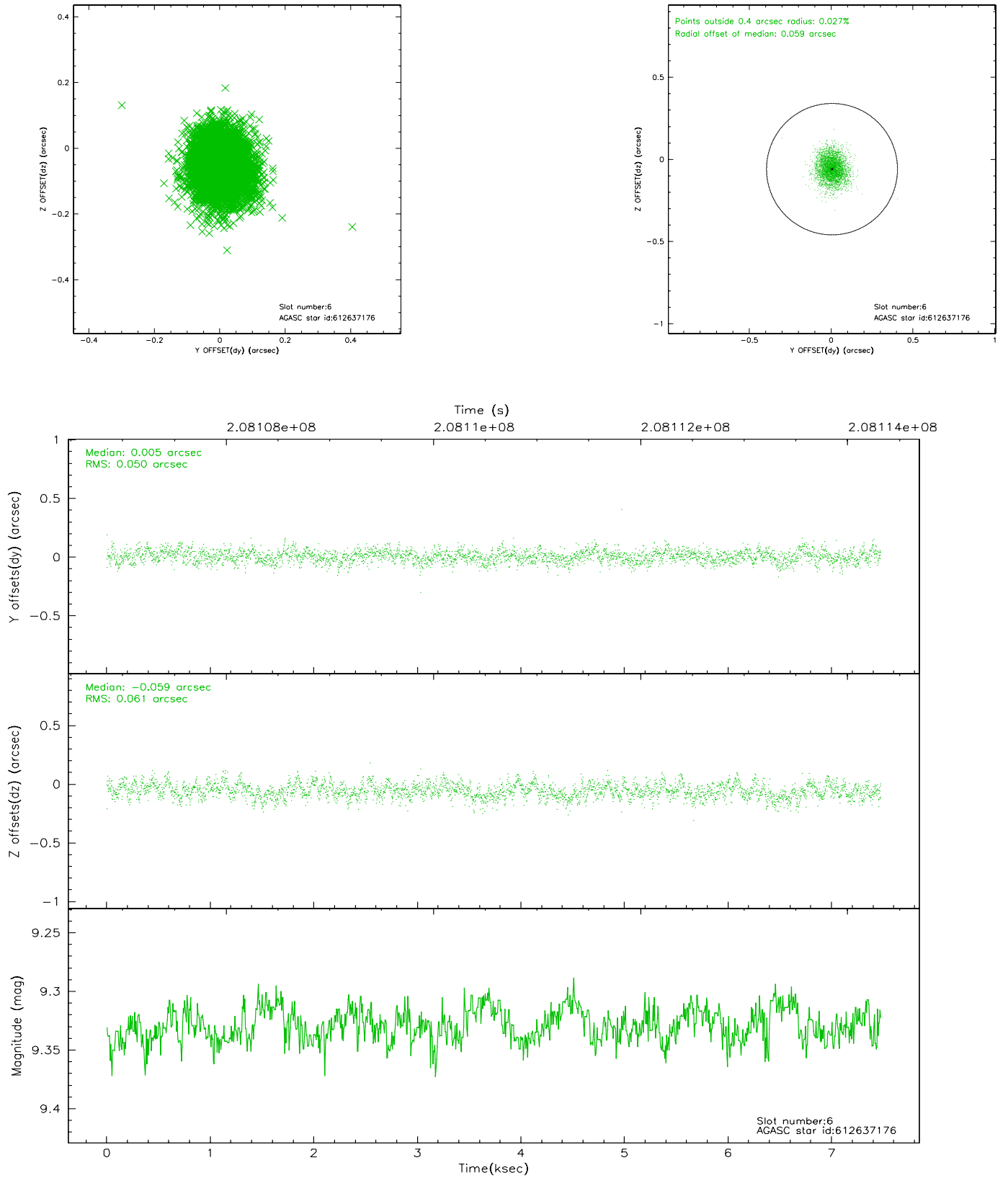
2.4.2 Slot 4



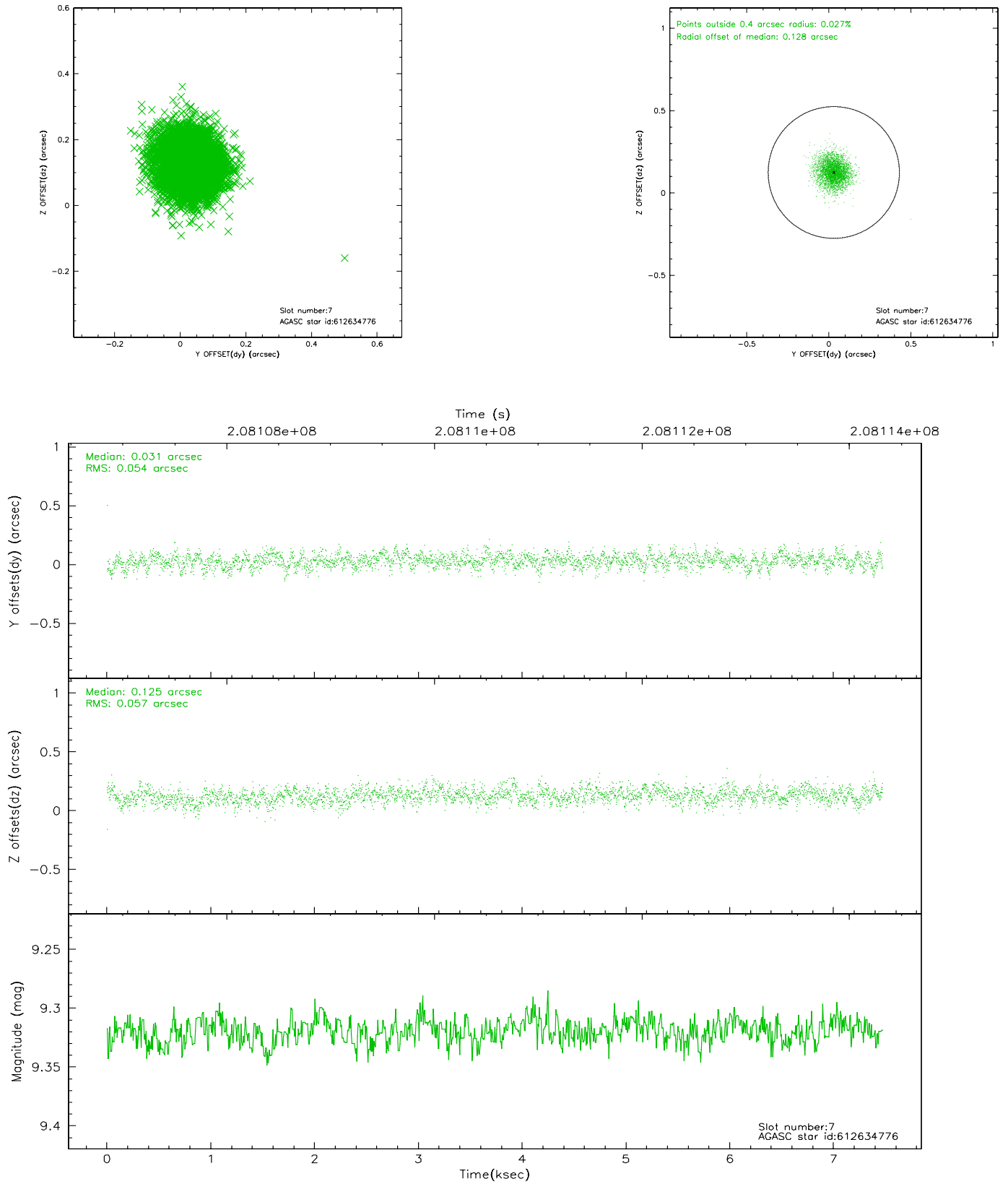
2.4.3 Slot 5



2.4.4 Slot 6

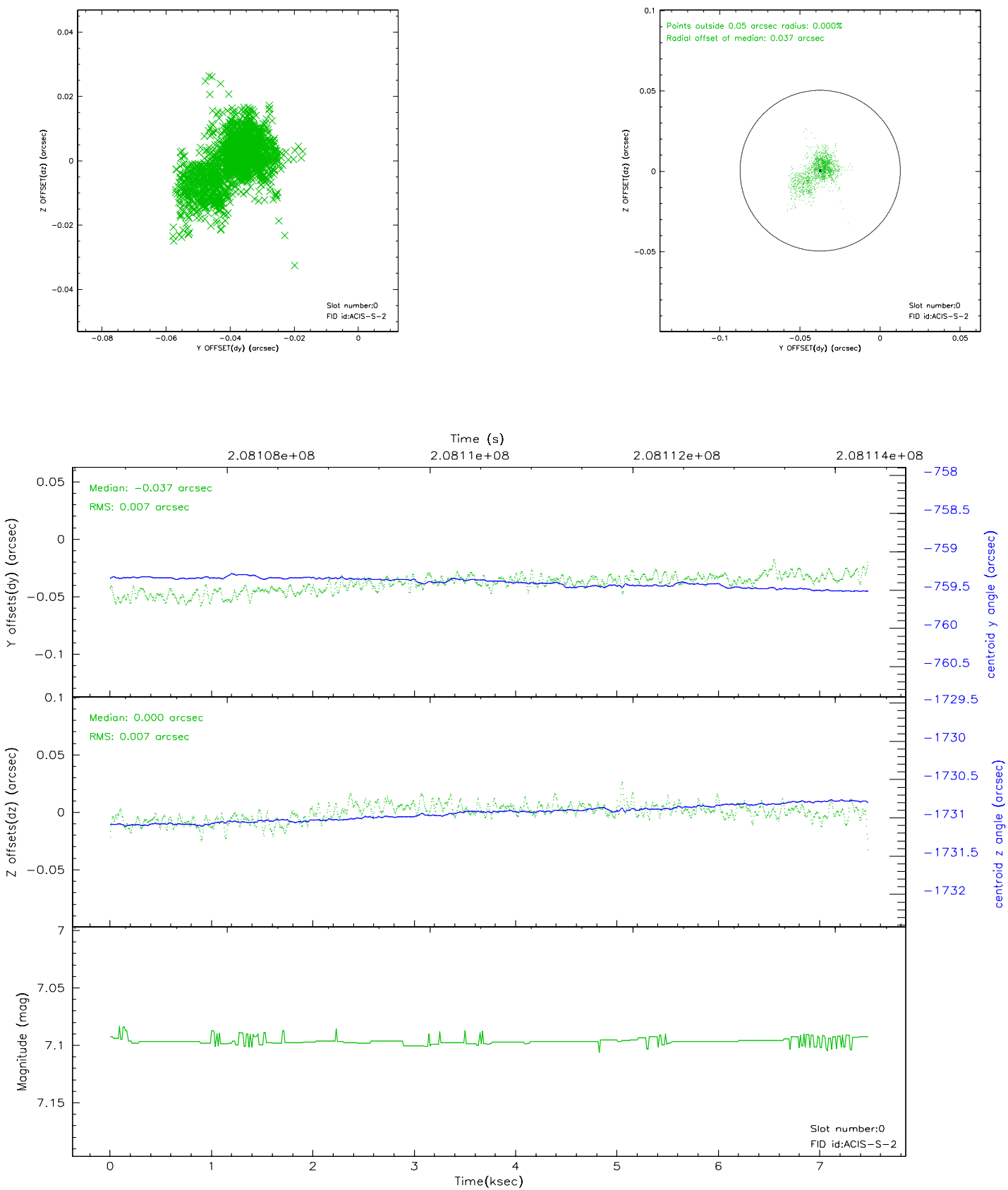


2.4.5 Slot 7

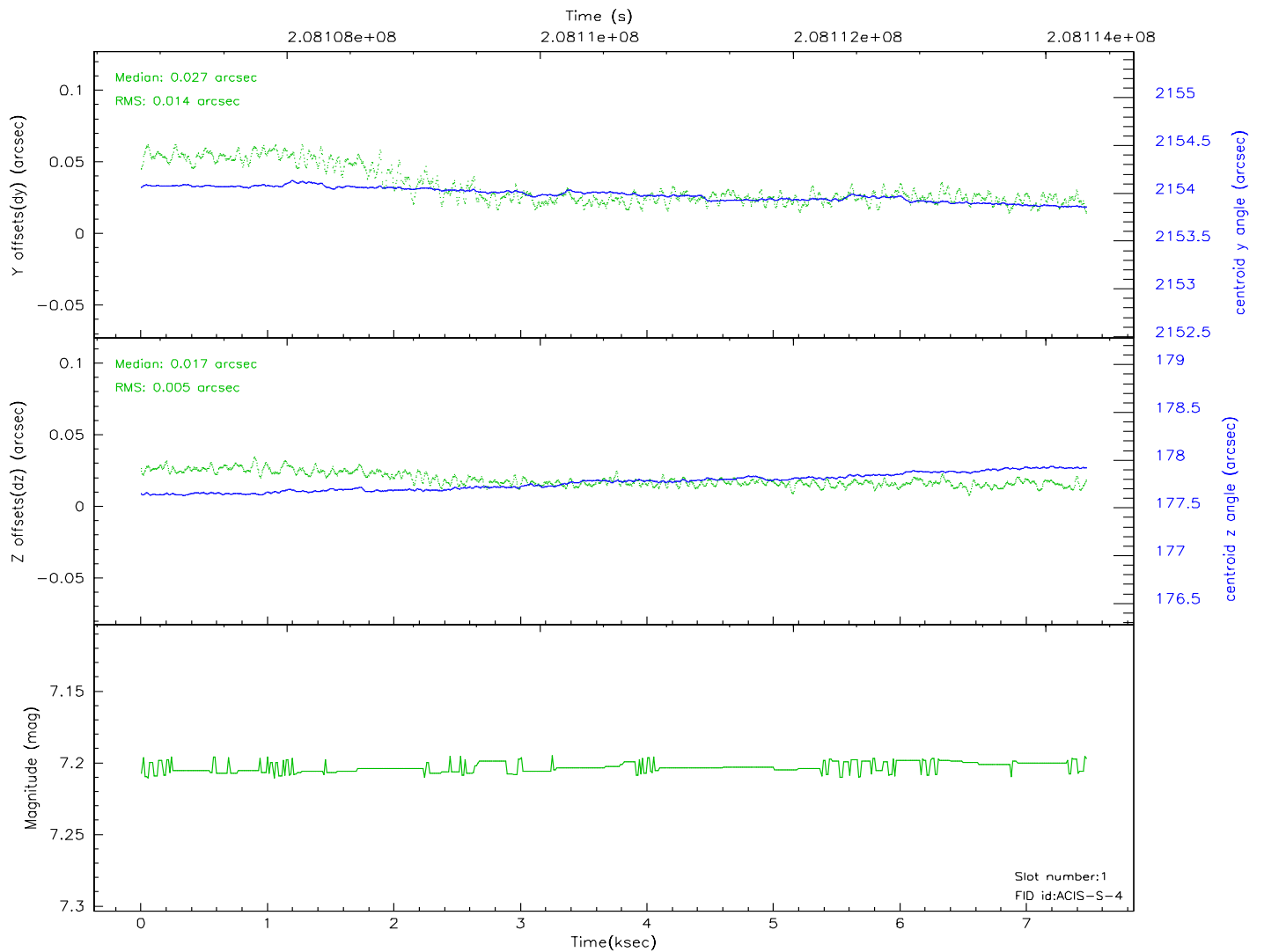
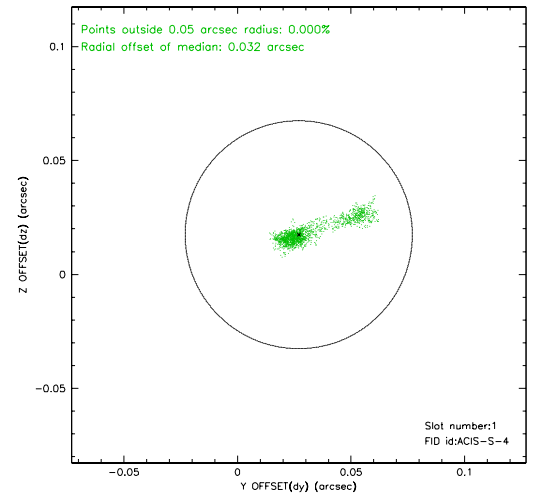
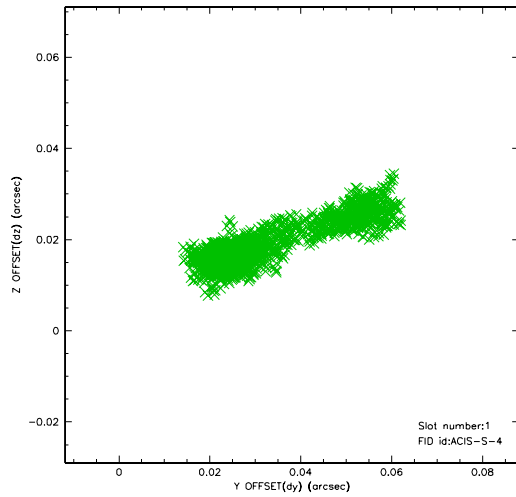


2.5 FID Slots

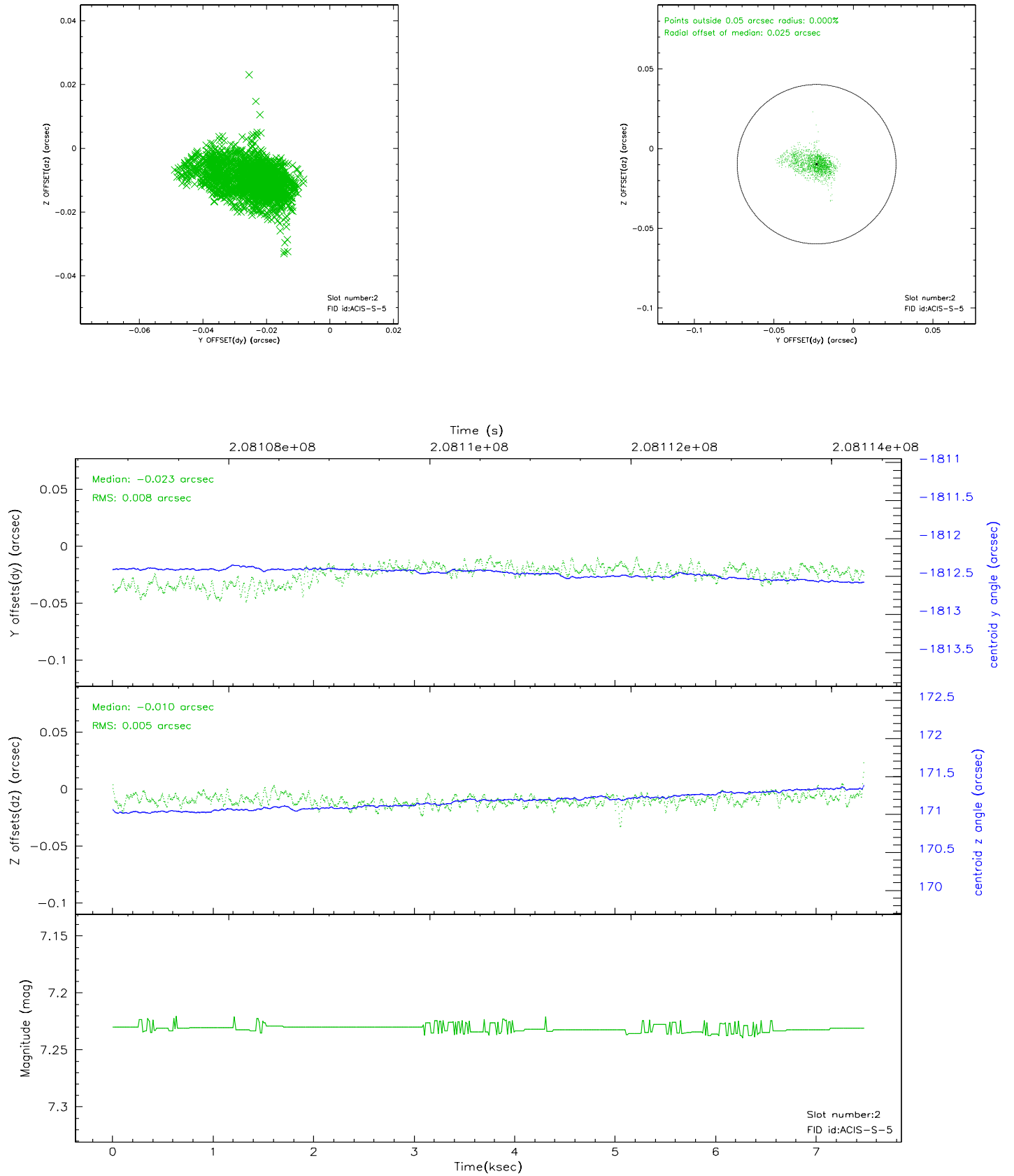
2.5.1 Slot 0



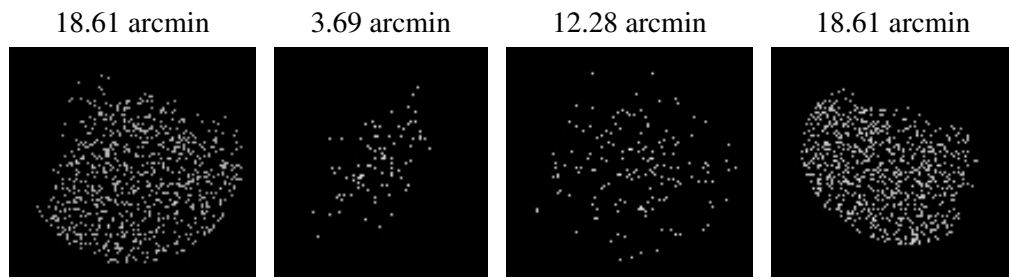
2.5.2 Slot 1



2.5.3 Slot 2



3 Point Sources



A Summary

A.1 Status

V&V Scientist	Jen Lauer
V&V Date (YYYY-MM-DD)	2006.04.26
V&V Edition	1
V&V Disposition and Status	OK
V&V Charge Time	7.196

A.2 Comments