

V&V Reference Report

L2 ASCDS Version : 7.6.8

Observation 4828 - L2 Version 001
Chandra X-Ray Center

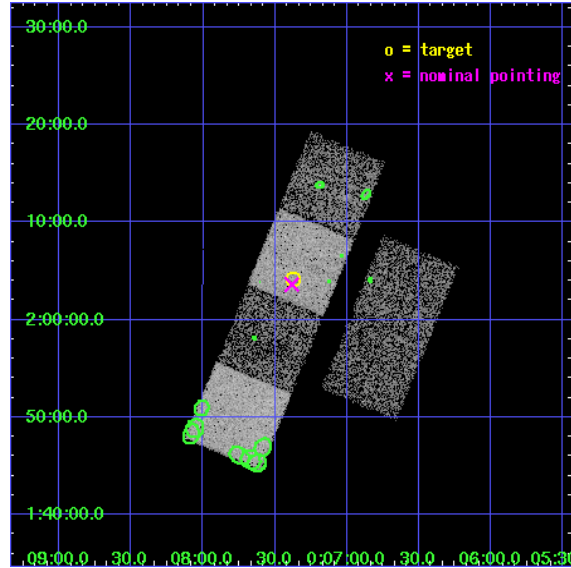
L2 Processing Date : Jun 30 2006

Contents

1	Front	2
2	OBI	3
2.1	OBI	3
2.1.1	Images	3
2.1.2	Bias	3
2.1.3	Parameters	4
2.1.4	Events	4
2.2	Compared Parameters	5
2.3	Aspect	6
2.4	Star Slots	9
2.4.1	Slot 3	9
2.4.2	Slot 4	10
2.4.3	Slot 5	11
2.4.4	Slot 6	12
2.4.5	Slot 7	13
2.5	FID Slots	14
2.5.1	Slot 0	14
2.5.2	Slot 1	15
2.5.3	Slot 2	16
3	Point Sources	17
A	Summary	18
A.1	Status	18
A.2	Comments	18

1 Front

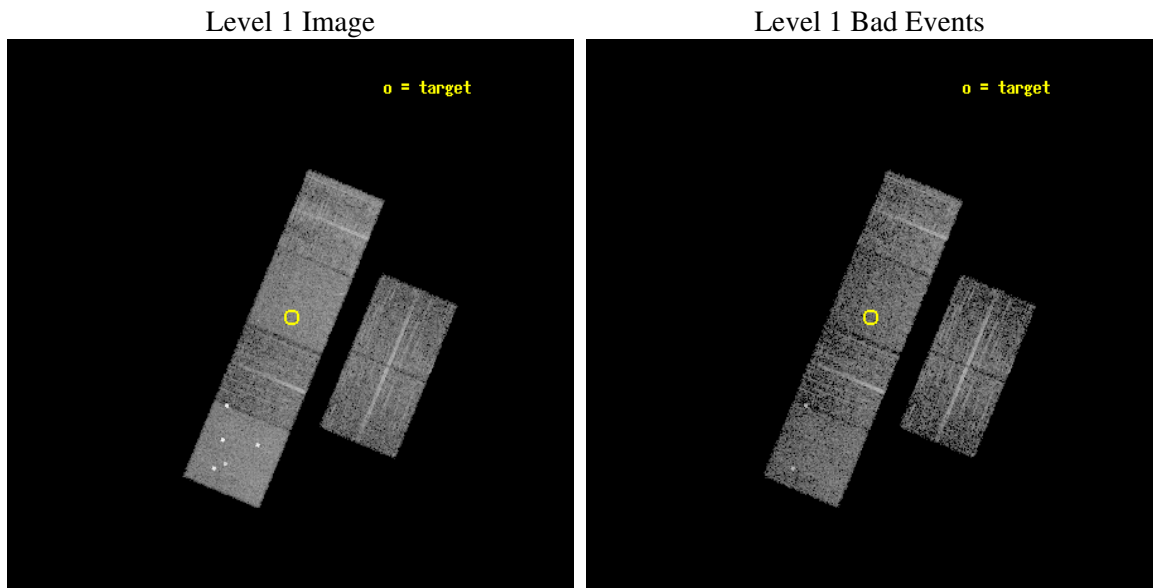
seq_num	700910
obs_id	4828
title	Constraining the Hard-X-ray Through Submm SEDs of a Complete Sample of Broad Absorption Line Quasars
observer	Dr. Sarah Gallagher
object	LBQS 0004+0147
dtcycle	0
cycle	P
ra_targ	1.84375
dec_targ	2.069944
ra_nom	1.8457972135385
dec_nom	2.0605191975033
roll_nom	292.41690034681
revision	2
ontime	5606.3999791145
livetime	5535.4083668102
ontime2	5606.3999791145
ontime3	5606.3999791145
ontime5	5606.3999791145
ontime6	5606.3999791145
ontime7	5606.3999791145
ontime8	5599.9180584252
l2events	53893



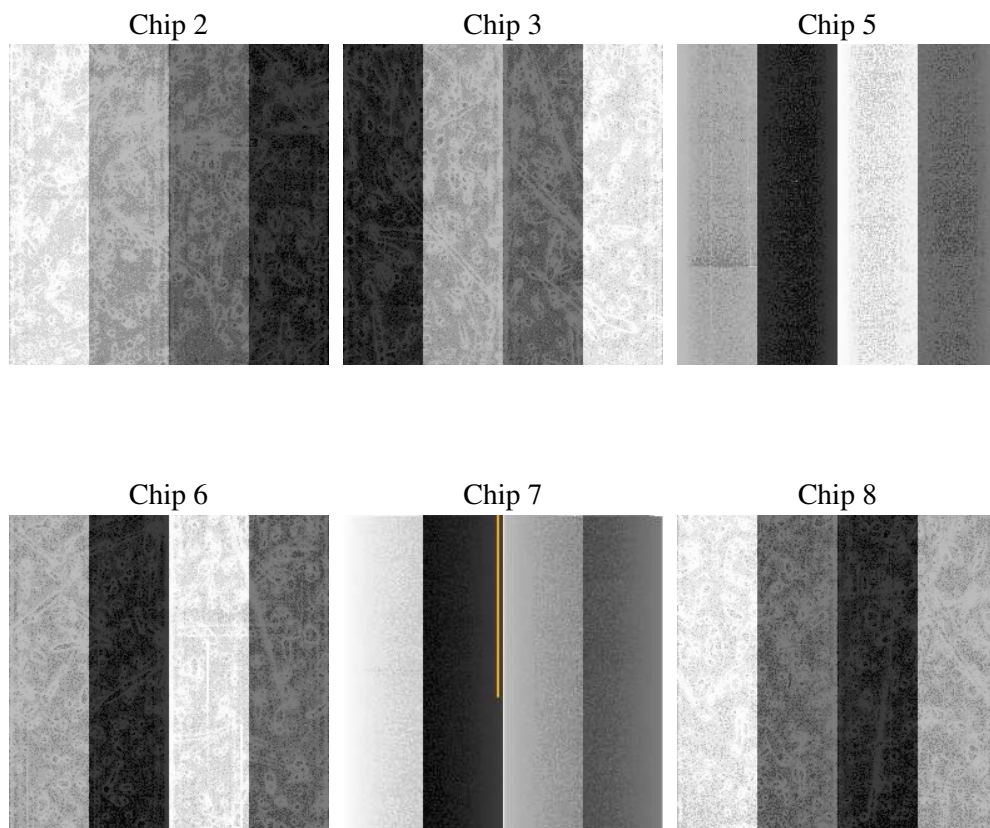
2 OBI

2.1 OBI

2.1.1 Images



2.1.2 Bias



2.1.3 Parameters

obi_num	1
ascdsver	7.6.8
caldbver	3.2.2
date	2006-06-30T10:11:18
revision	2

sched_exp_time	5850.000000
ontime	5610.1878430247
ontime2	5610.1878430247
ontime3	5610.1878629029
ontime5	5610.1878629029
ontime6	5610.1878629029
ontime7	5610.1878430247
ontime8	5603.7058625519
l1events	236029

2.1.4 Events

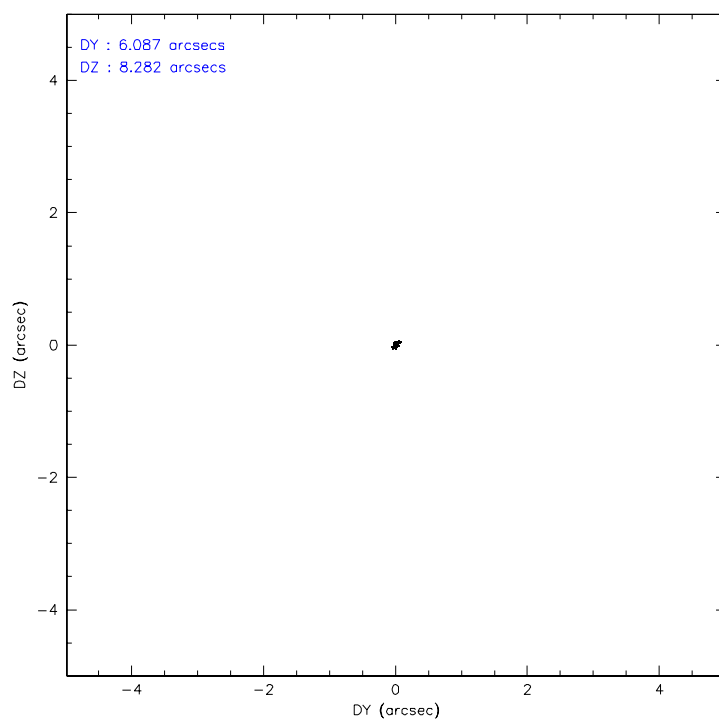
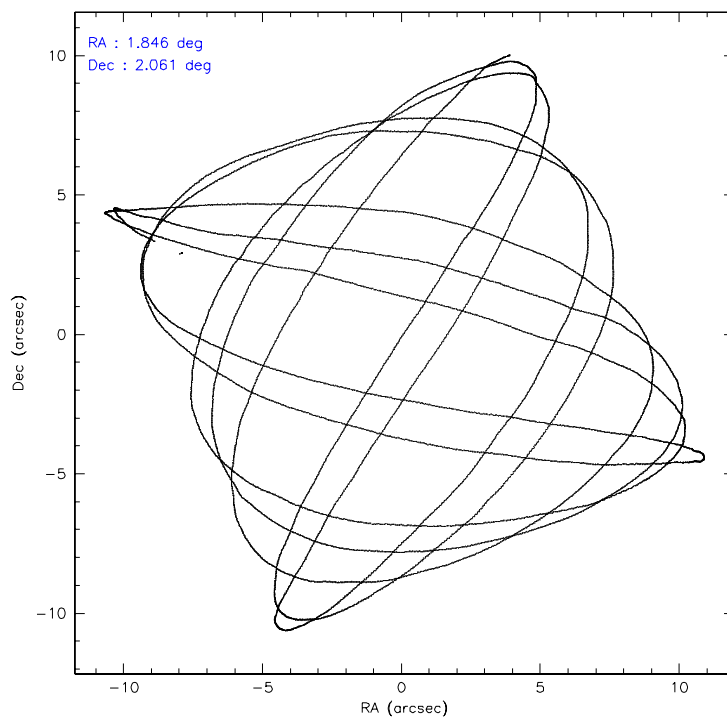
	ccd 2	ccd 3	ccd 5	ccd 6	ccd 7	ccd 8
level 1 events	31268	30874	53403	31180	43283	46021
rejected events	26864	26595	26873	26660	25815	34040
rejected %	85%	86%	50%	85%	59%	73%

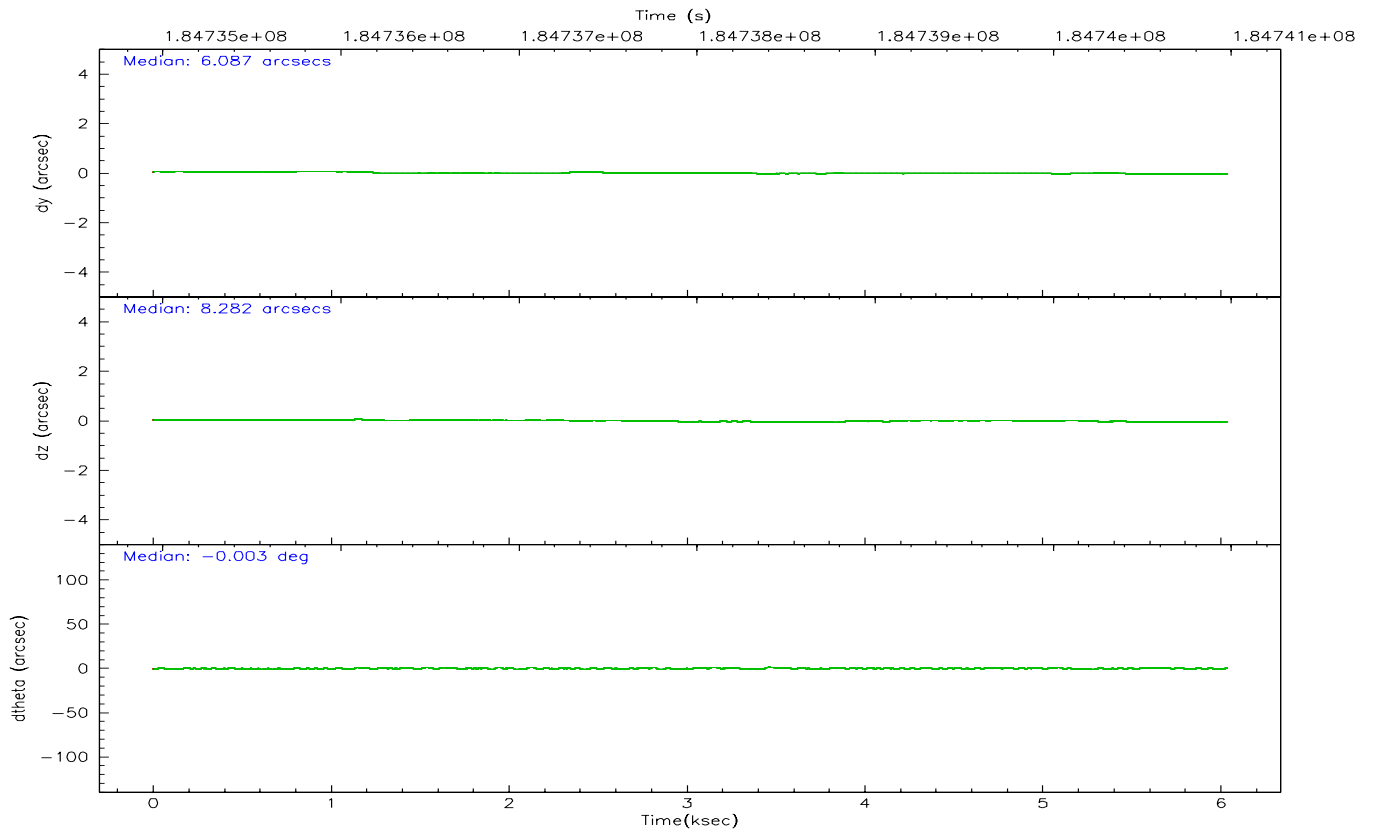
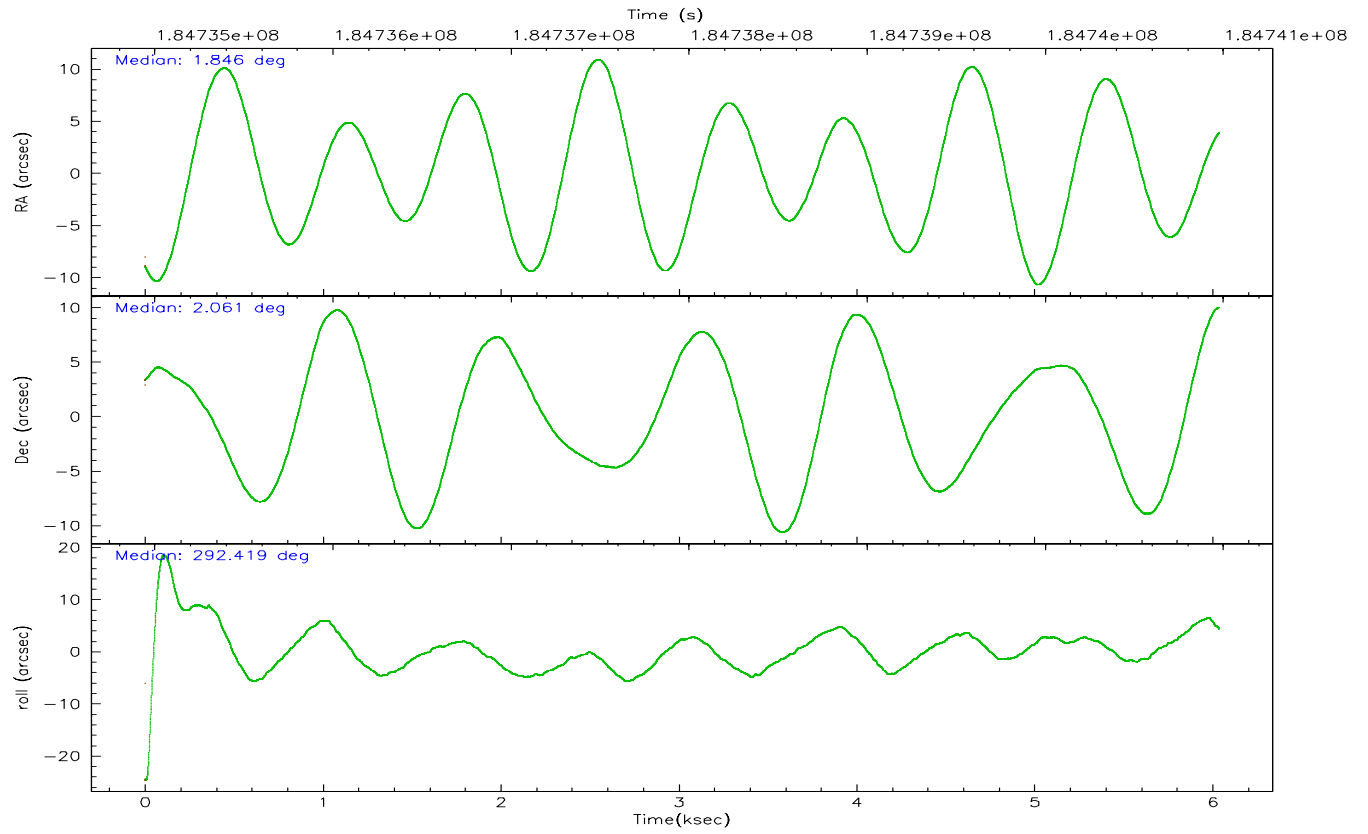
	ccd 2	ccd 3	ccd 5	ccd 6	ccd 7	ccd 8
grade 0 events	2044	1914	5164	1947	1090	4101
	6%	6%	9%	6%	2%	8%
grade 1 events	22	22	80	14	27	41
	0%	0%	0%	0%	0%	0%
grade 2 events	869	819	7272	938	4516	2262
	2%	2%	13%	3%	10%	4%
grade 3 events	382	391	644	404	862	1465
	1%	1%	1%	1%	1%	3%
grade 4 events	364	408	884	359	823	1338
	1%	1%	1%	1%	1%	2%
grade 5 events	1196	1373	2542	1322	2716	1897
	3%	4%	4%	4%	6%	4%
grade 6 events	747	748	12578	875	10189	2830
	2%	2%	23%	2%	23%	6%
grade 7 events	25644	25199	24239	25321	23060	32087
	82%	81%	45%	81%	53%	69%

2.2 Compared Parameters

Parameter	Planned	Actual	Parameter	Planned	Actual
Instrument	ACIS	ACIS	Obspar format version number	6	6
Detector	ACIS-235678	ACIS-235678	Obspar file type	PREDICTED	ACTUAL
Grating	NONE	NONE	Obspar update status	NONE	UPDATED
Data mode	FAINT	FAINT	On-chip summing requested	N	N
Observation mode	POINTING	POINTING	Subarray requested	NONE	NONE
Pointing RA	1.823991	1.84579721353849	Alternating exposures requested	N	N
Pointing Dec	2.076811	2.060519197503346	Primary exposure time	0.000000	3.2
Pointing Roll	292.261163	292.4169003468089			
SIM focus pos (mm)	-0.684267	-0.6828225247311905			
SIM defocus (mm)	0	0.001444936568705701			
SIM translation stage pos (mm)	-190.132523	-190.1400660498719			
SIM translation stage offset (mm)	0	0.00754346686406393			
Observation start time	184735130.184000	184734718.62474			
Observation start date	2003-11-09T03:17:46	2003-11-09T03:11:58			
Observation end time	184740980.184000	184741973.06256			
Observation end date	2003-11-09T04:55:16	2003-11-09T05:12:53			
Read mode	TIMED	TIMED			

2.3 Aspect



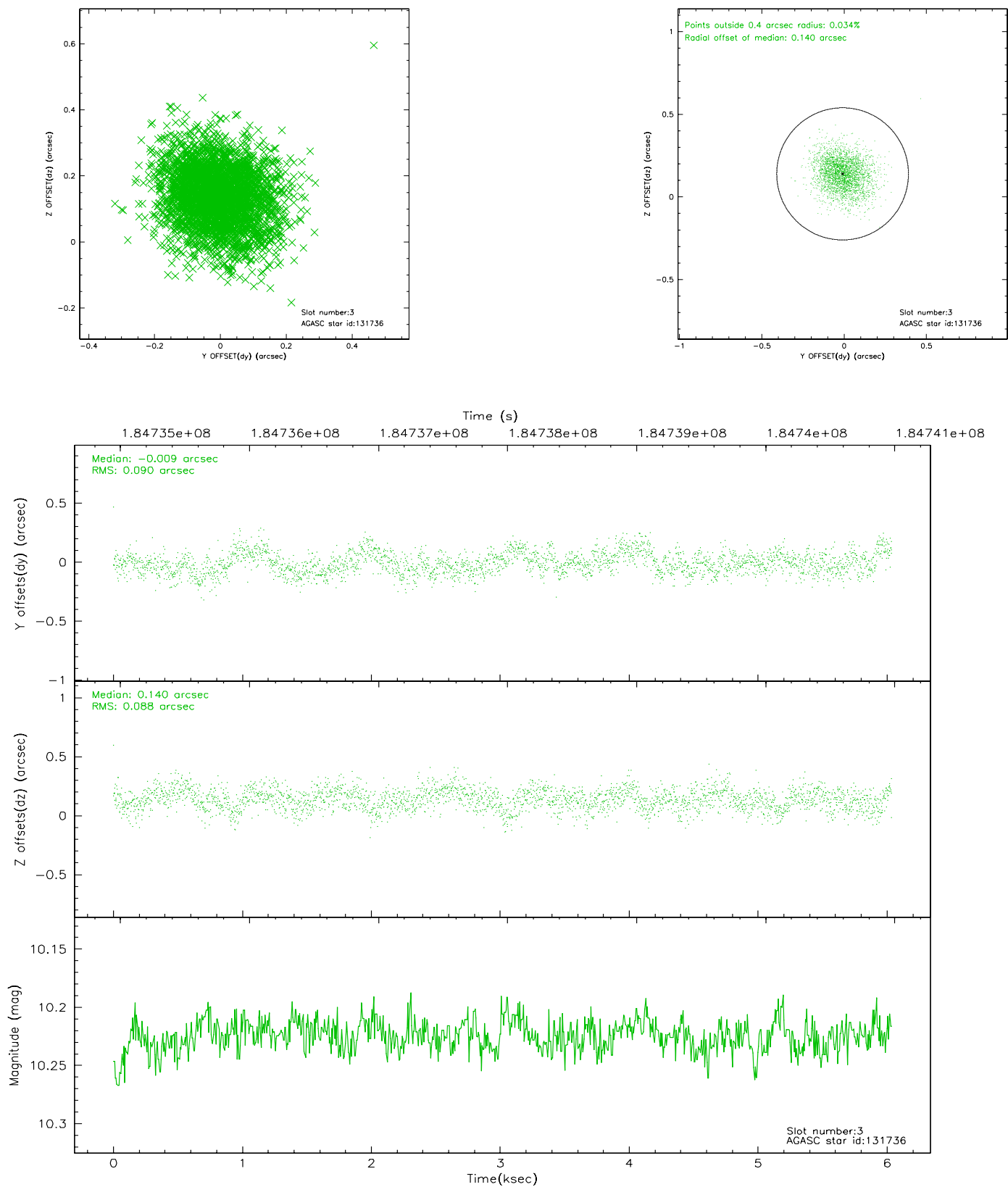


Slot Statistics

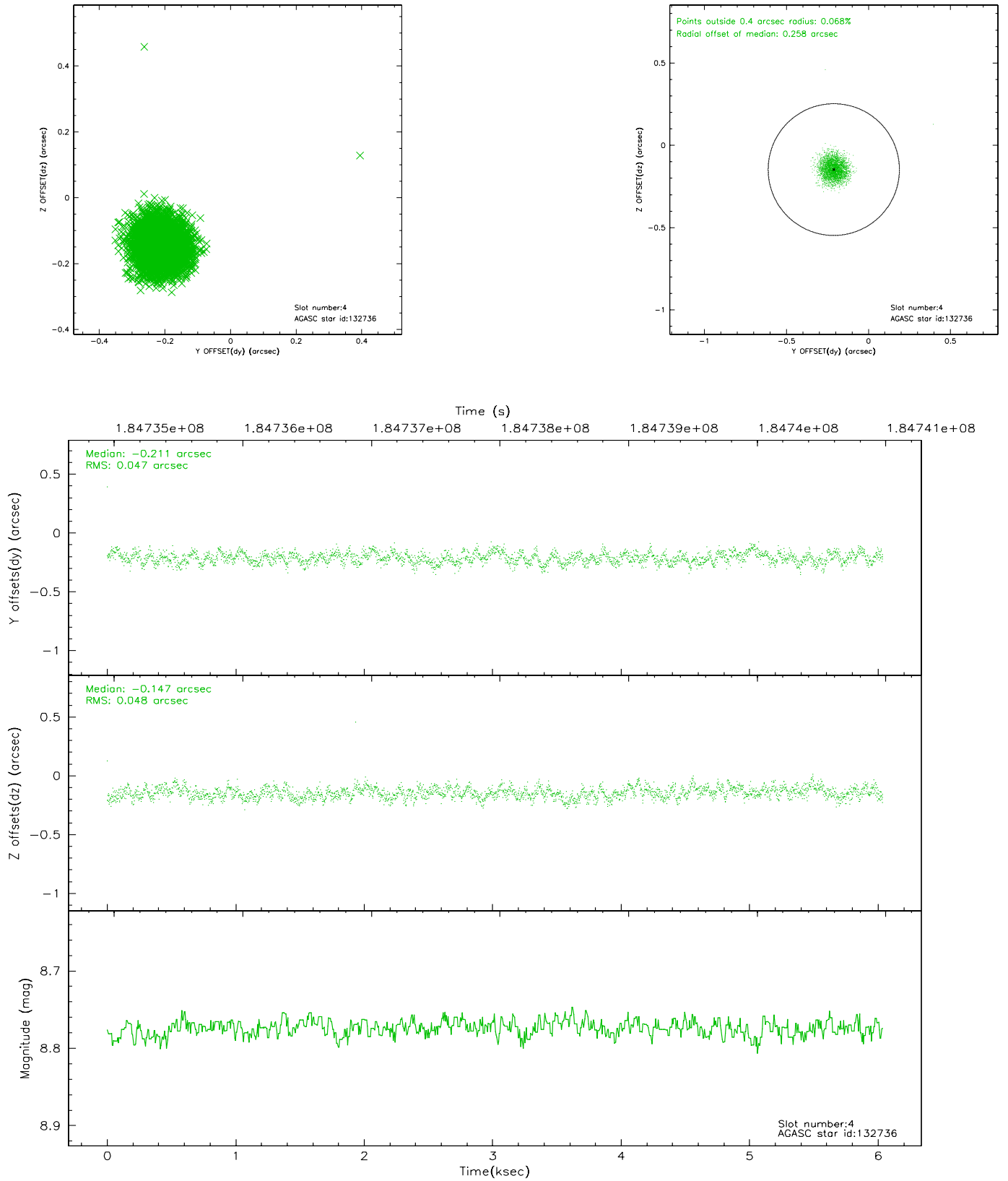
slot	status	id	mag	n_pts	med_dy	med_dz	dr1	dr2	ra	dec	mean_y	mean_z
0	FID	ACIS-S-2	7.10	1473	-0.025	-0.018	0.006	0.011	0.000000	0.000000	-758.87	-1729.49
1	FID	ACIS-S-4	7.21	1473	0.025	0.017	0.005	0.010	0.000000	0.000000	2154.04	177.98
2	FID	ACIS-S-5	7.23	1473	-0.031	0.010	0.006	0.011	0.000000	0.000000	-1810.43	172.81
3	GUIDE	131736	10.22	2933	-0.009	0.140	0.134	0.218	1.667746	2.105323	-307.21	-480.97
4	GUIDE	132736	8.77	2946	-0.211	-0.147	0.071	0.109	1.292421	2.397203	-1791.55	-1332.43
5	GUIDE	136104	9.85	2945	0.079	-0.117	0.109	0.181	2.035477	1.747318	1386.37	254.35
6	GUIDE	137336	9.11	2946	0.047	0.007	0.083	0.132	1.718151	1.861024	575.90	-646.27
7	GUIDE	141784	9.00	2920	0.095	0.117	0.084	0.142	1.831012	1.665078	1382.19	-538.40

2.4 Star Slots

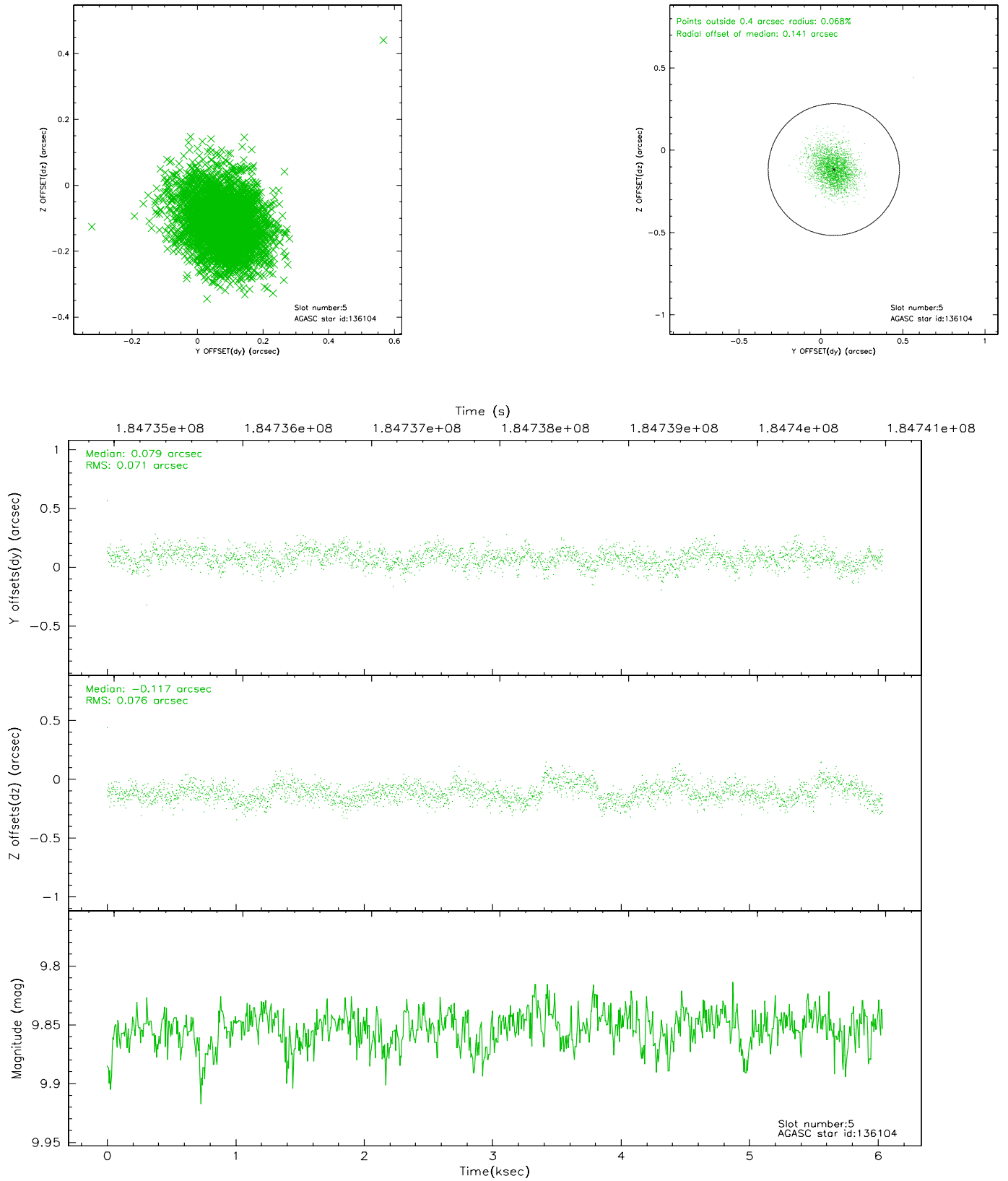
2.4.1 Slot 3



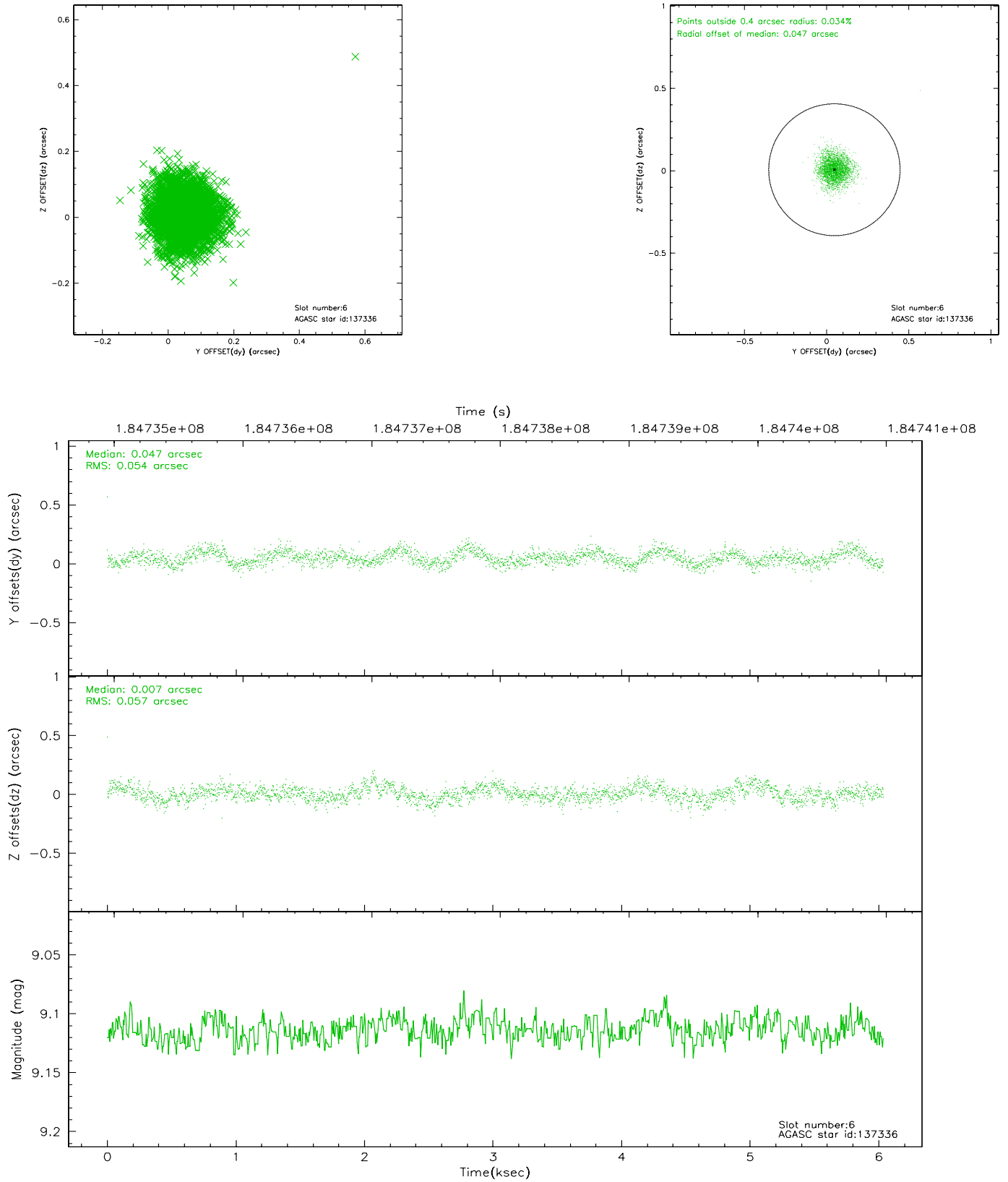
2.4.2 Slot 4



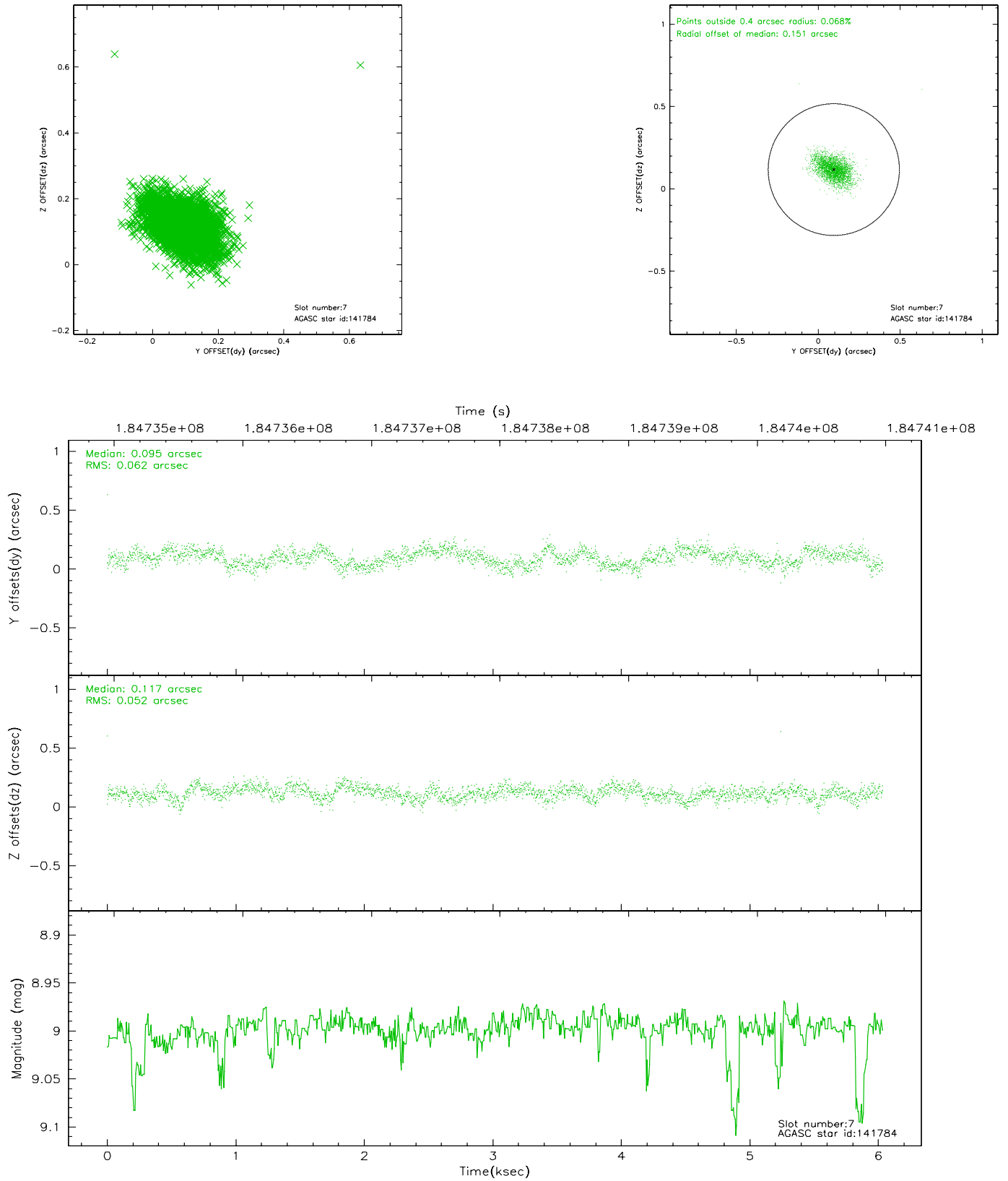
2.4.3 Slot 5



2.4.4 Slot 6

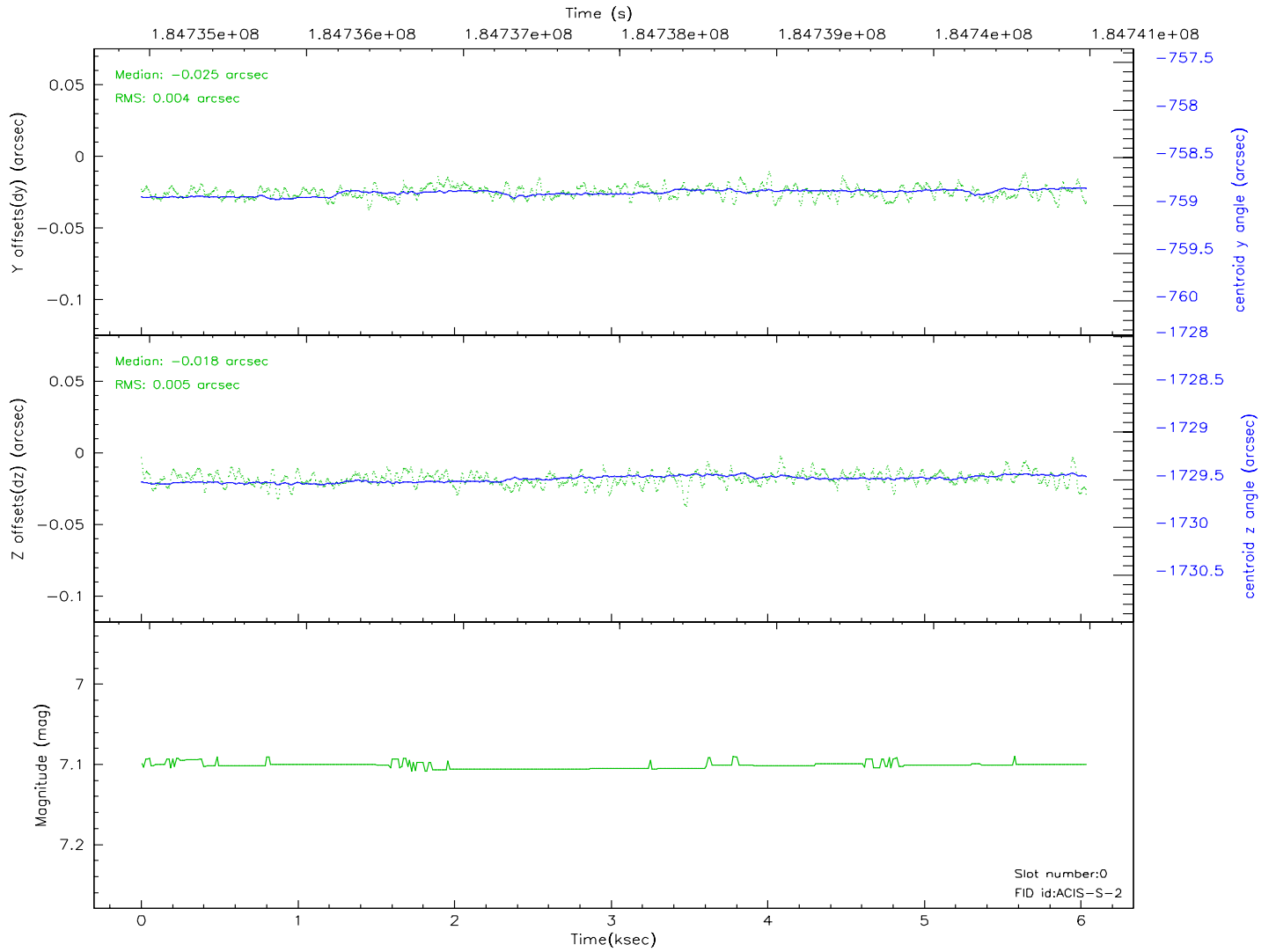
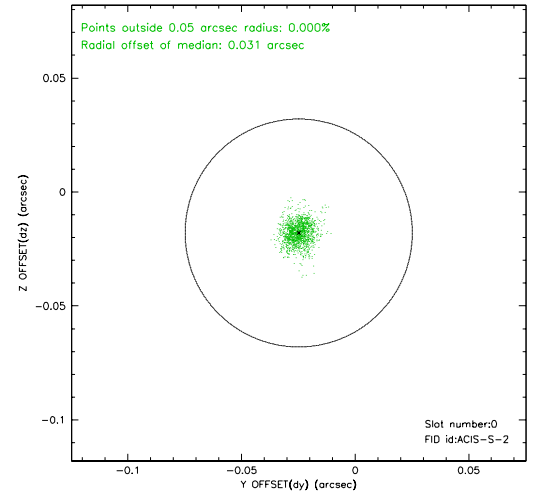
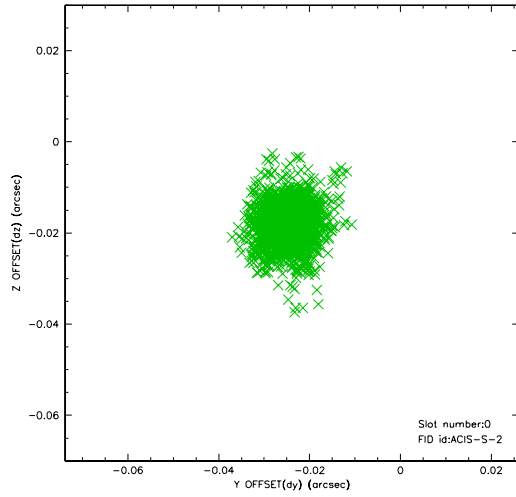


2.4.5 Slot 7

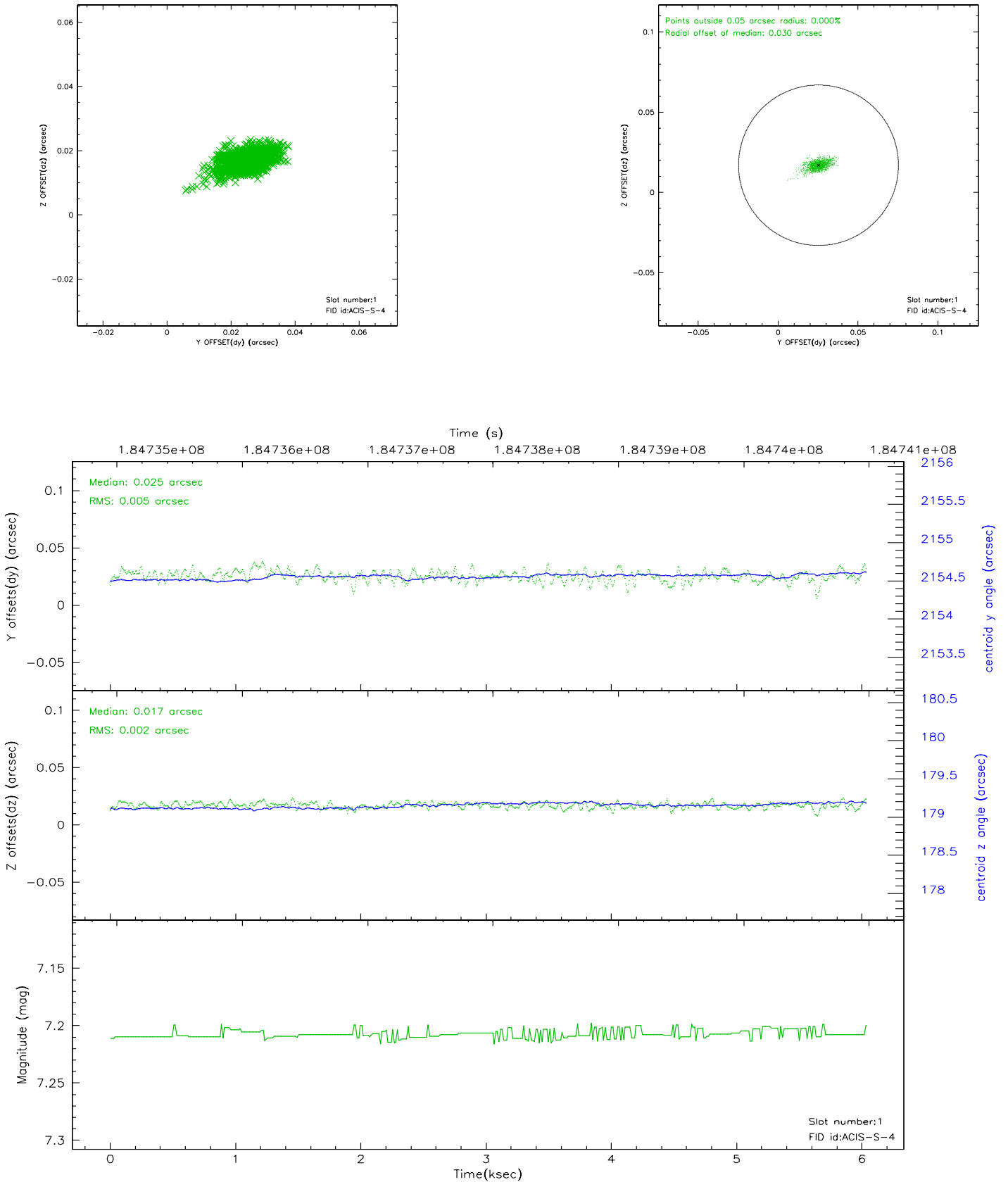


2.5 FID Slots

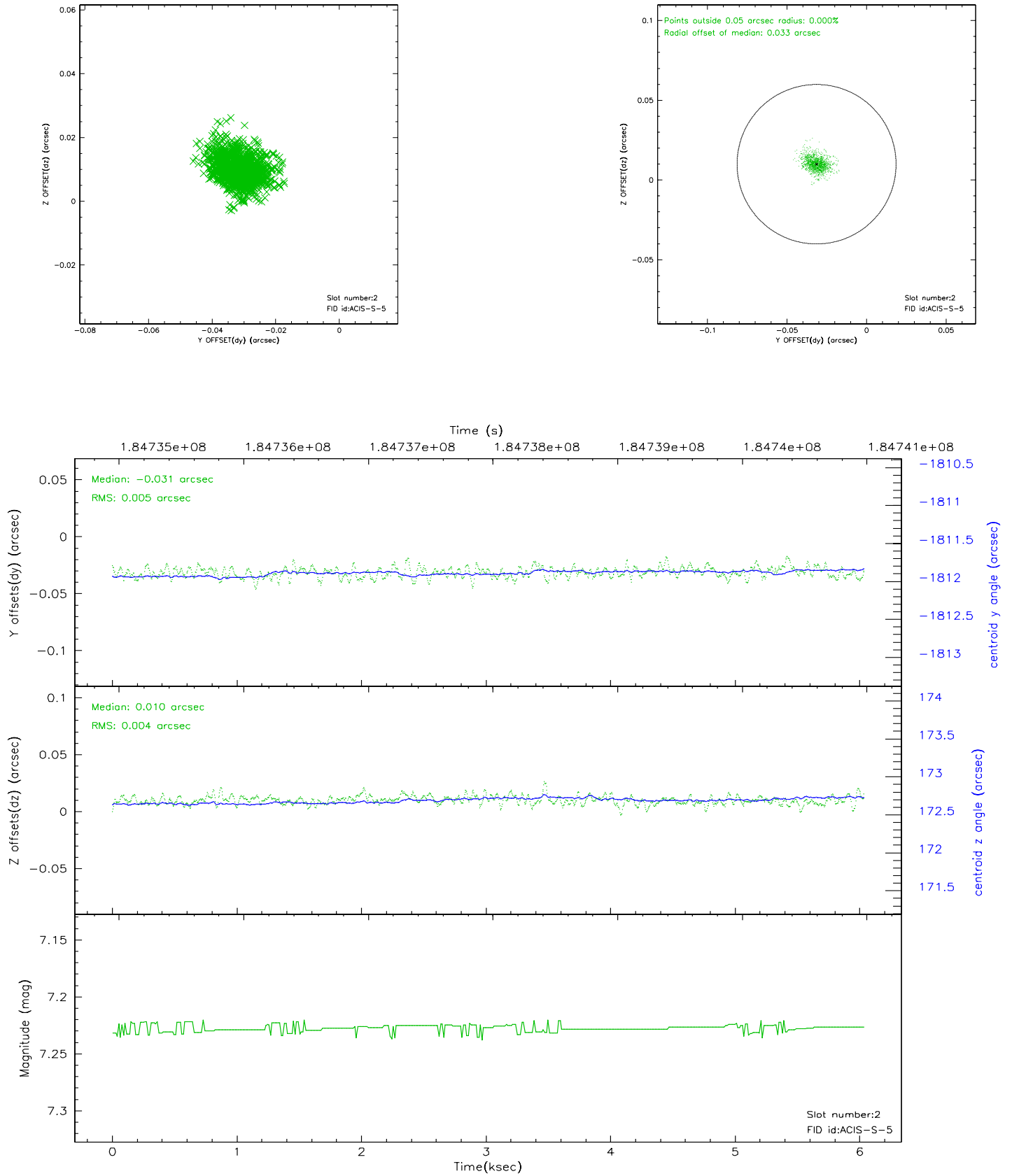
2.5.1 Slot 0



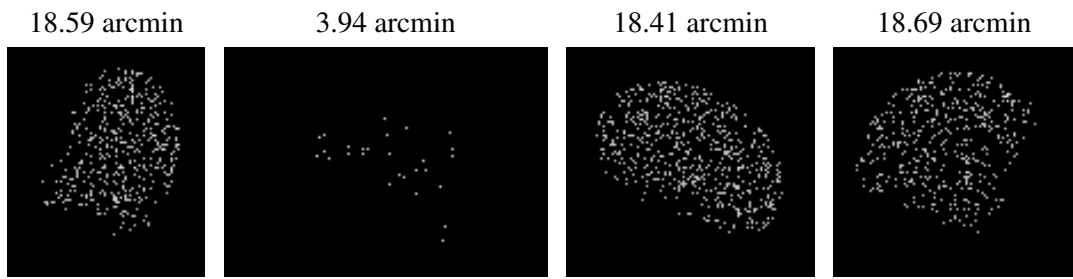
2.5.2 Slot 1



2.5.3 Slot 2



3 Point Sources



A Summary

A.1 Status

V&V Scientist	Beth Sundheim
V&V Date (YYYY-MM-DD)	2006.06.30
V&V Edition	1
V&V Disposition and Status	OK
V&V Charge Time	5.606

A.2 Comments