

# V&V Reference Report

## L2 ASCDS Version : 7.6.7.2

Observation 4814 - L2 Version 001  
Chandra X-Ray Center

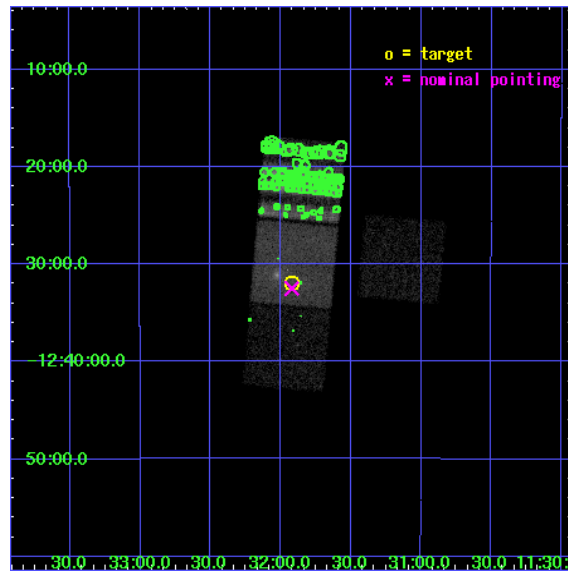
L2 Processing Date : May 25 2006

## Contents

<b>1</b>	<b>Front</b>	<b>2</b>
<b>2</b>	<b>OBI</b>	<b>3</b>
2.1	OBI . . . . .	3
2.1.1	Images . . . . .	3
2.1.2	Bias . . . . .	3
2.1.3	Parameters . . . . .	4
2.1.4	Events . . . . .	4
2.2	Compared Parameters . . . . .	5
2.3	Aspect . . . . .	6
2.4	Star Slots . . . . .	9
2.4.1	Slot 3 . . . . .	9
2.4.2	Slot 4 . . . . .	10
2.4.3	Slot 5 . . . . .	11
2.4.4	Slot 6 . . . . .	12
2.4.5	Slot 7 . . . . .	13
2.5	FID Slots . . . . .	14
2.5.1	Slot 0 . . . . .	14
2.5.2	Slot 1 . . . . .	15
2.5.3	Slot 2 . . . . .	16
<b>3</b>	<b>Point Sources</b>	<b>17</b>
<b>A</b>	<b>Summary</b>	<b>18</b>
A.1	Status . . . . .	18
A.2	Comments . . . . .	18

# 1 Front

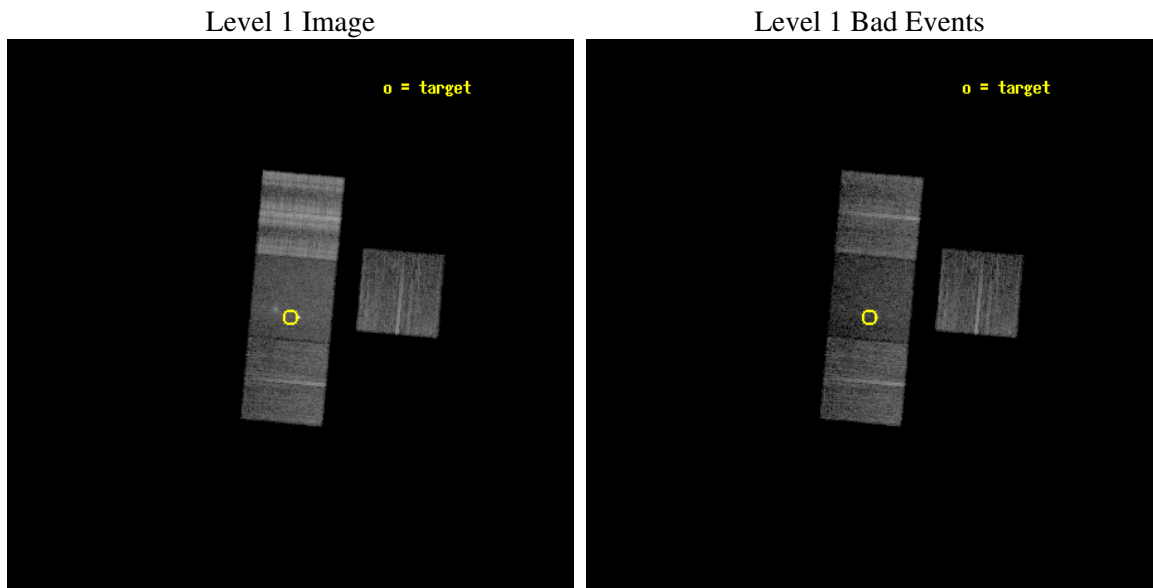
seq_num	700897
obs_id	4814
title	Towards a microlensing mapping of an accretion disk
observer	Dr Jean-Francois Claeskens
object	1RXSJ113155.4-123155
dtcycle	0
cycle	P
ra_targ	172.980833
dec_targ	-12.531944
ra_nom	172.980024092
dec_nom	-12.541584314956
roll_nom	275.19080802443
revision	2
ontime	10180.399980426
livetime	10047.38555998
ontime3	10174.118089557
ontime6	10177.259000182
ontime7	10180.399980426
ontime8	10180.399980426
l2events	92948



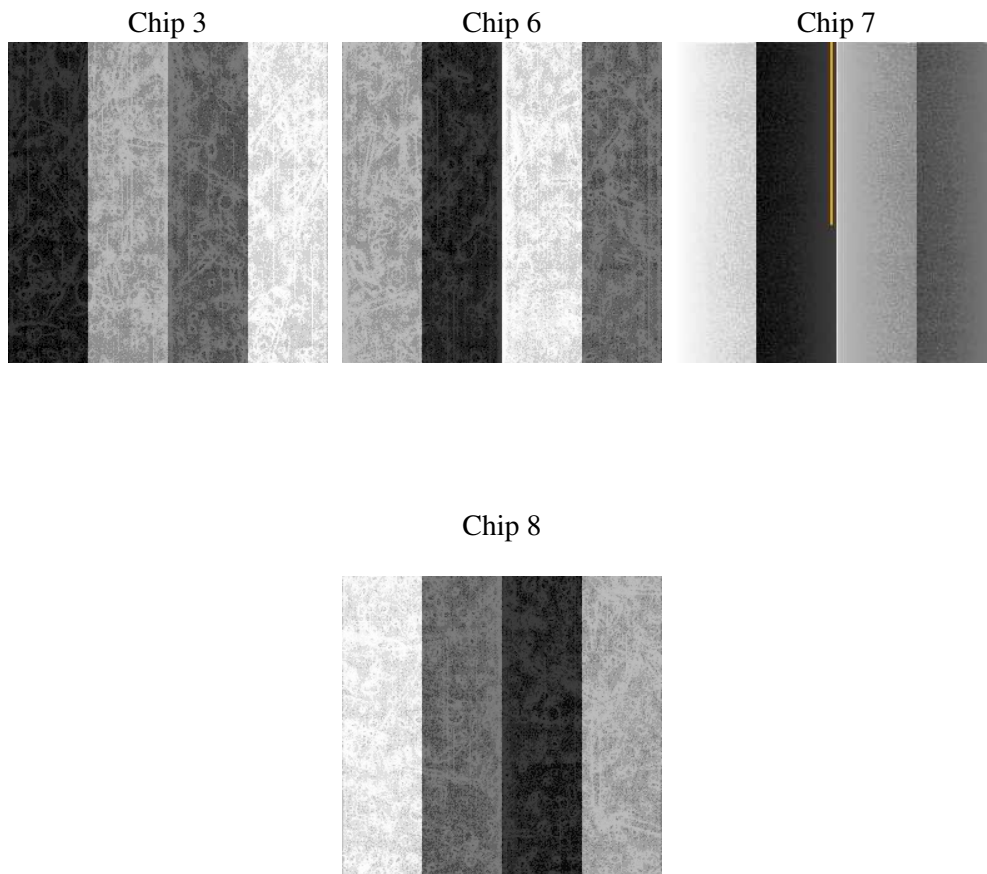
## 2 OBI

### 2.1 OBI

#### 2.1.1 Images



#### 2.1.2 Bias



### 2.1.3 Parameters

obi_num	0
ascdsver	7.6.7.2
caldsver	3.2.2
date	2006-05-25T09:58:13
revision	2

sched_exp_time	10000.000000
ontime	11932.697045177
ontime3	11926.4151344
ontime6	11929.556064934
ontime7	11932.697045177
ontime8	11932.697025269
l1events	478192

### 2.1.4 Events

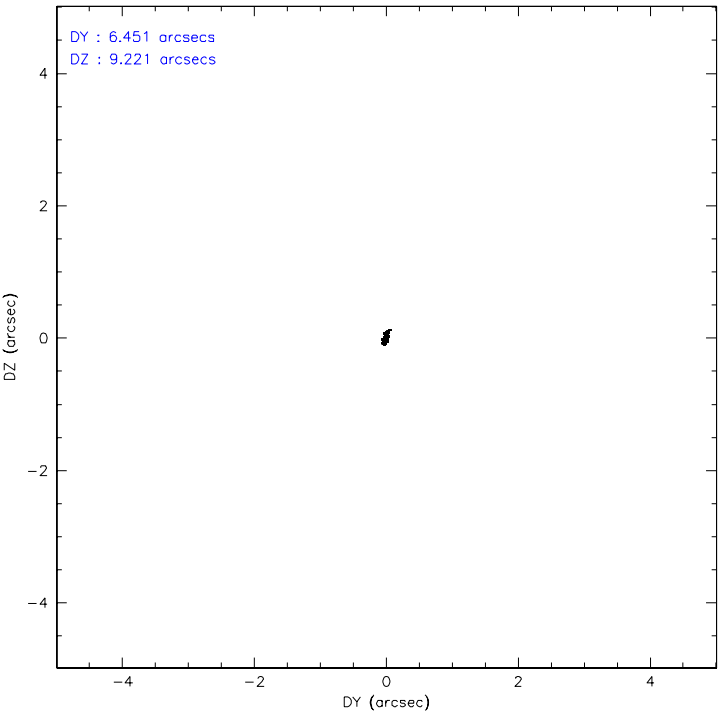
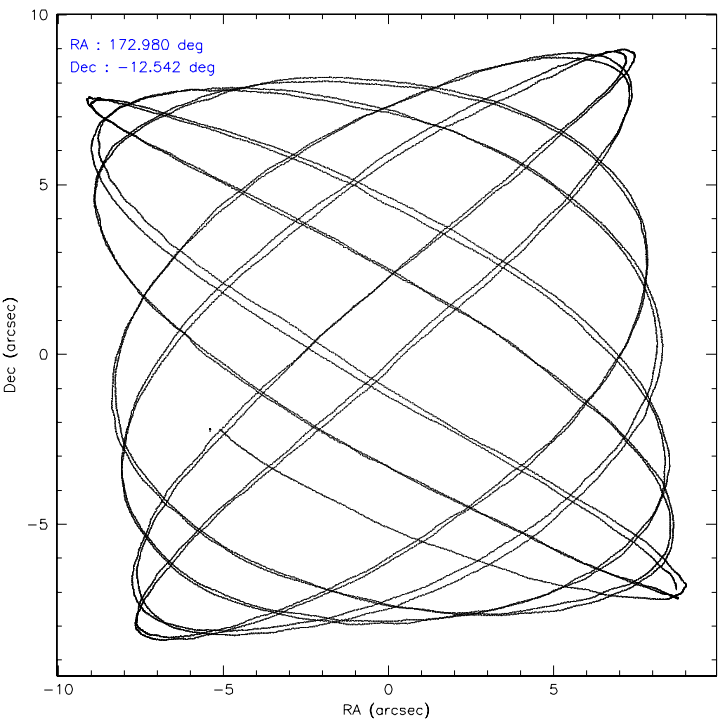
	<b>ccd 3</b>	<b>ccd 6</b>	<b>ccd 7</b>	<b>ccd 8</b>
level 1 events	88613	96081	87534	205964
rejected events	82728	88004	52631	116038
rejected %	93%	91%	60%	56%

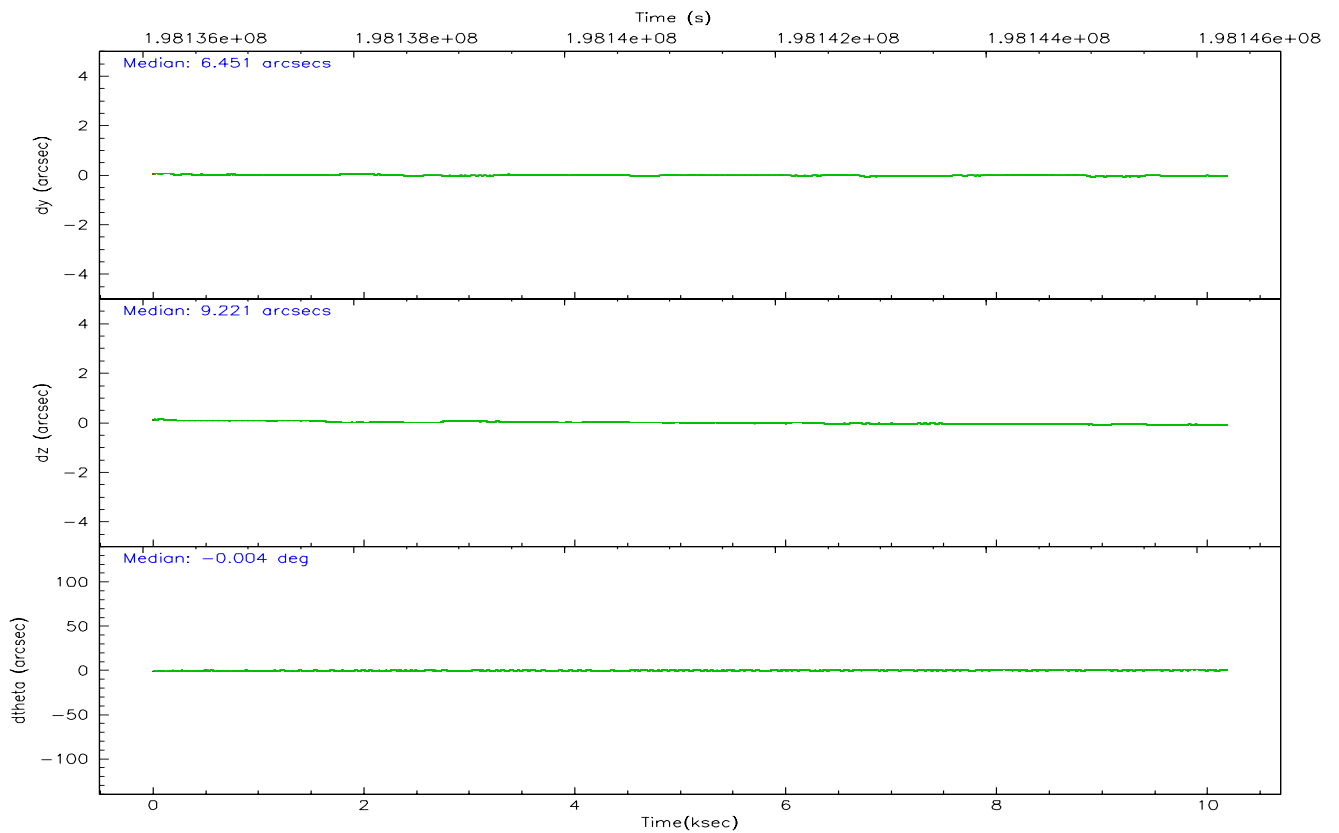
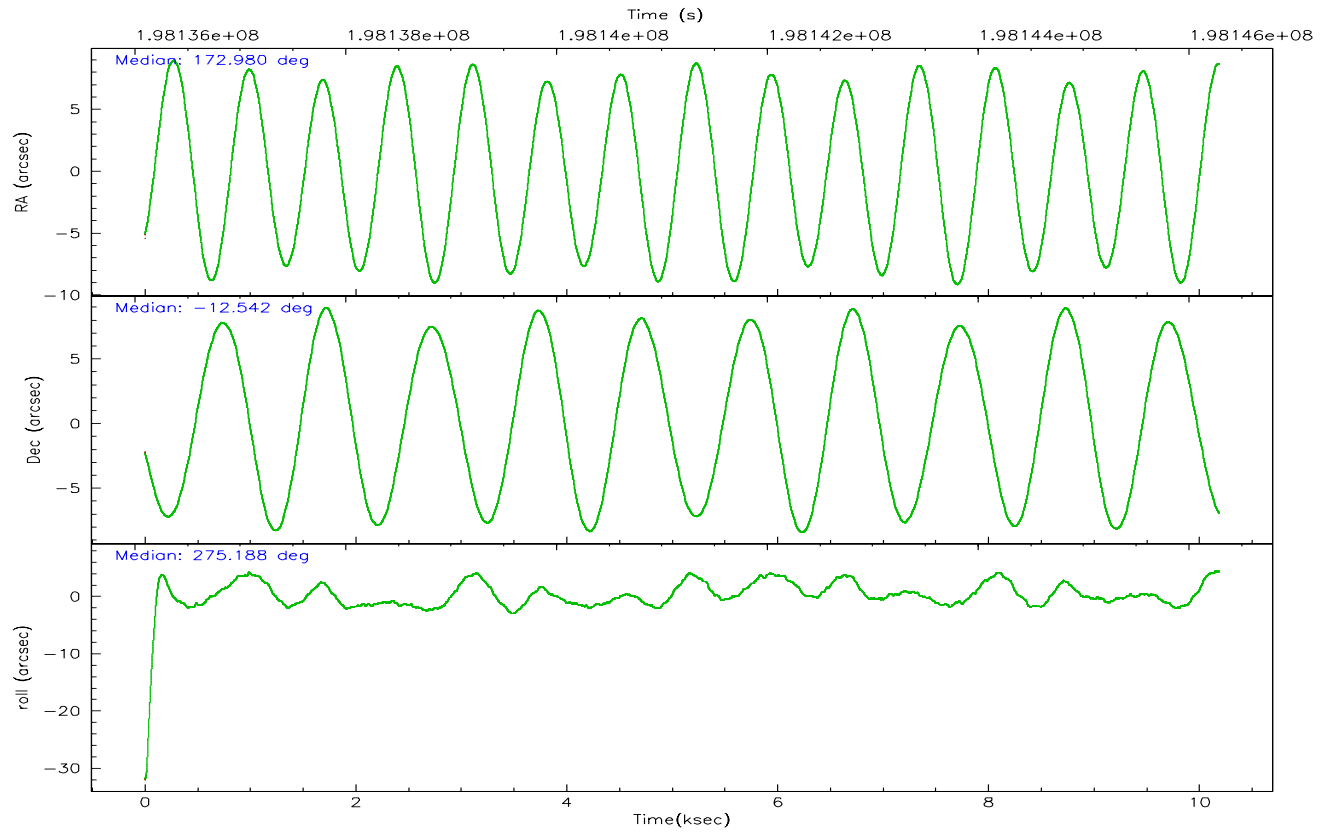
	<b>ccd 3</b>	<b>ccd 6</b>	<b>ccd 7</b>	<b>ccd 8</b>
grade 0 events	2409	3592	3696	29307
	2%	3%	4%	14%
grade 1 events	39	54	93	264
	0%	0%	0%	0%
grade 2 events	1705	2758	10559	16569
	1%	2%	12%	8%
grade 3 events	797	820	2800	18900
	0%	0%	3%	9%
grade 4 events	764	813	2727	16909
	0%	0%	3%	8%
grade 5 events	2660	2706	6510	5191
	3%	2%	7%	2%
grade 6 events	1335	1604	20372	27044
	1%	1%	23%	13%
grade 7 events	78904	83734	40777	91780
	89%	87%	46%	44%

## 2.2 Compared Parameters

Parameter	Planned	Actual	Parameter	Planned	Actual
Instrument	ACIS	ACIS	Obspar format version number	6	6
Detector	ACIS-3678	ACIS-3678	Obspar file type	PREDICTED	ACTUAL
Grating	NONE	NONE	Obspar update status	NONE	UPDATED
Data mode	VFAINT	VFAINT	On-chip summing requested	N	N
Observation mode	POINTING	POINTING	Subarray requested	NONE	NONE
Pointing RA	172.963601	172.9800240919959	Alternating exposures requested	N	N
Pointing Dec	-12.519543	-12.54158431495627	Primary exposure time	1.000000	3.1
Pointing Roll	275.030657	275.1908080244262			
Window start time	198115264.184000	198115264.184000			
Window stop time	198806464.184000	198806464.184000			
SIM focus pos (mm)	-0.684267	-0.6828225247311905			
SIM defocus (mm)	0	0.001444936568705701			
SIM translation stage pos (mm)	-190.132523	-190.1400660498719			
SIM translation stage offset (mm)	0	0.00754346686406393			
Observation start time	198136283.184000	198134350.48451			
Observation start date	2004-04-12T05:50:19	2004-04-12T05:19:10			
Observation end time	198146283.184000	198146416.78504			
Observation end date	2004-04-12T08:36:59	2004-04-12T08:40:16			
Read mode	TIMED	TIMED			

## 2.3 Aspect





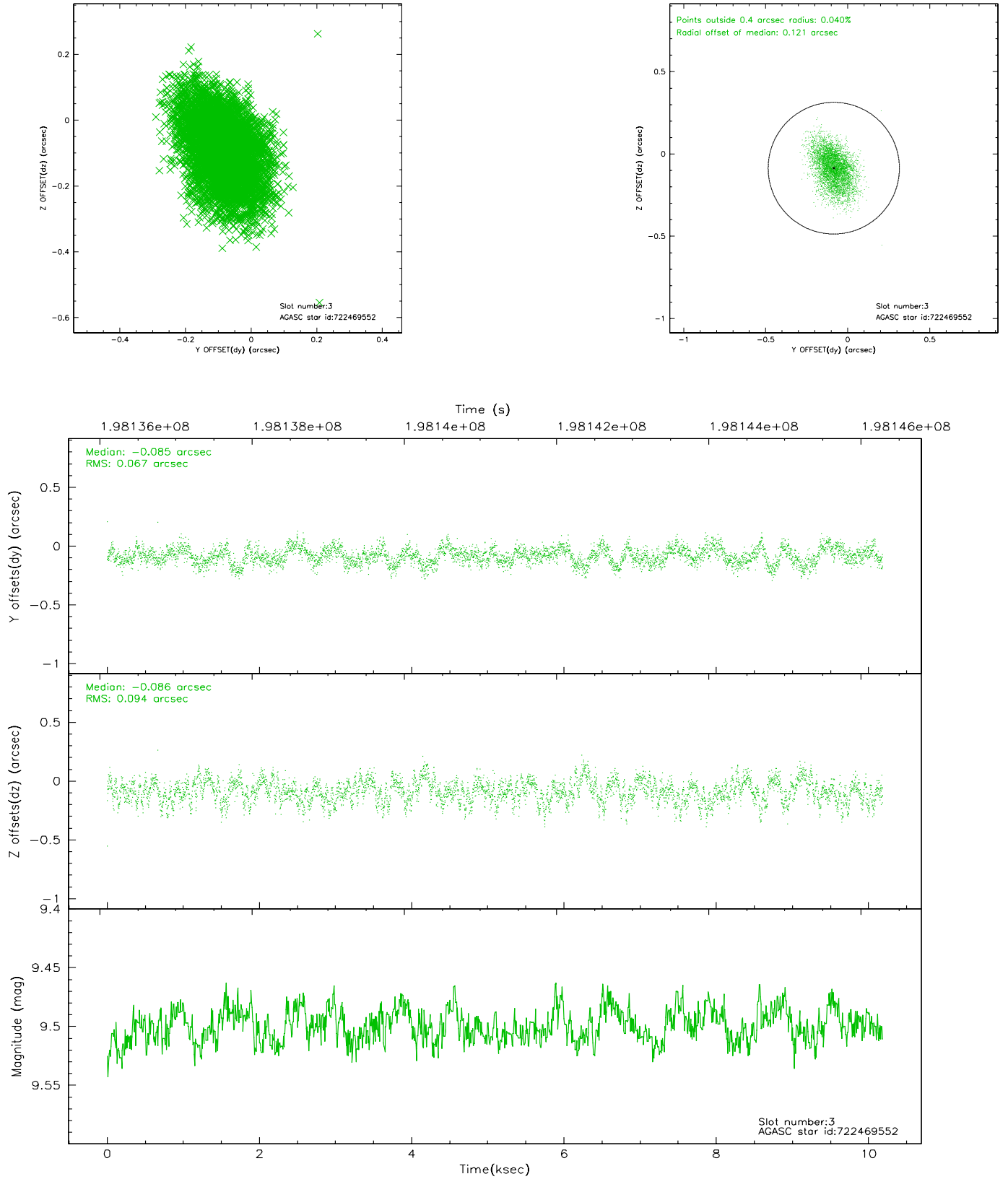
### Slot Statistics

slot	status	id	mag	n_pts	med_dy	med_dz	dr1	dr2	ra	dec	mean_y	mean_z
0	FID	ACIS-S-2	7.10	2485	-0.041	-0.019	0.006	0.010	0.000000	0.000000	-759.21	-1730.47
1	FID	ACIS-S-4	7.21	2485	0.050	0.025	0.005	0.008	0.000000	0.000000	2153.91	177.53
2	FID	ACIS-S-5	7.23	2485	-0.040	0.003	0.006	0.010	0.000000	0.000000	-1811.40	171.75
3	GUIDE	722469552	9.50	4968	-0.085	-0.086	0.122	0.205	172.271393	-12.124699	-1626.18	-2302.78
4	GUIDE	722473176	9.46	4964	-0.067	0.013	0.089	0.142	172.599746	-12.066793	-1735.06	-1133.76
5	GUIDE	722871728	9.67	4906	0.009	0.021	0.122	0.191	173.202235	-12.568355	248.79	819.69
6	GUIDE	722872912	9.93	4967	0.068	0.012	0.116	0.192	173.118043	-12.649915	515.68	499.48
7	GUIDE	722873464	7.32	4969	0.075	0.047	0.071	0.110	172.661543	-13.050266	1811.78	-1222.50

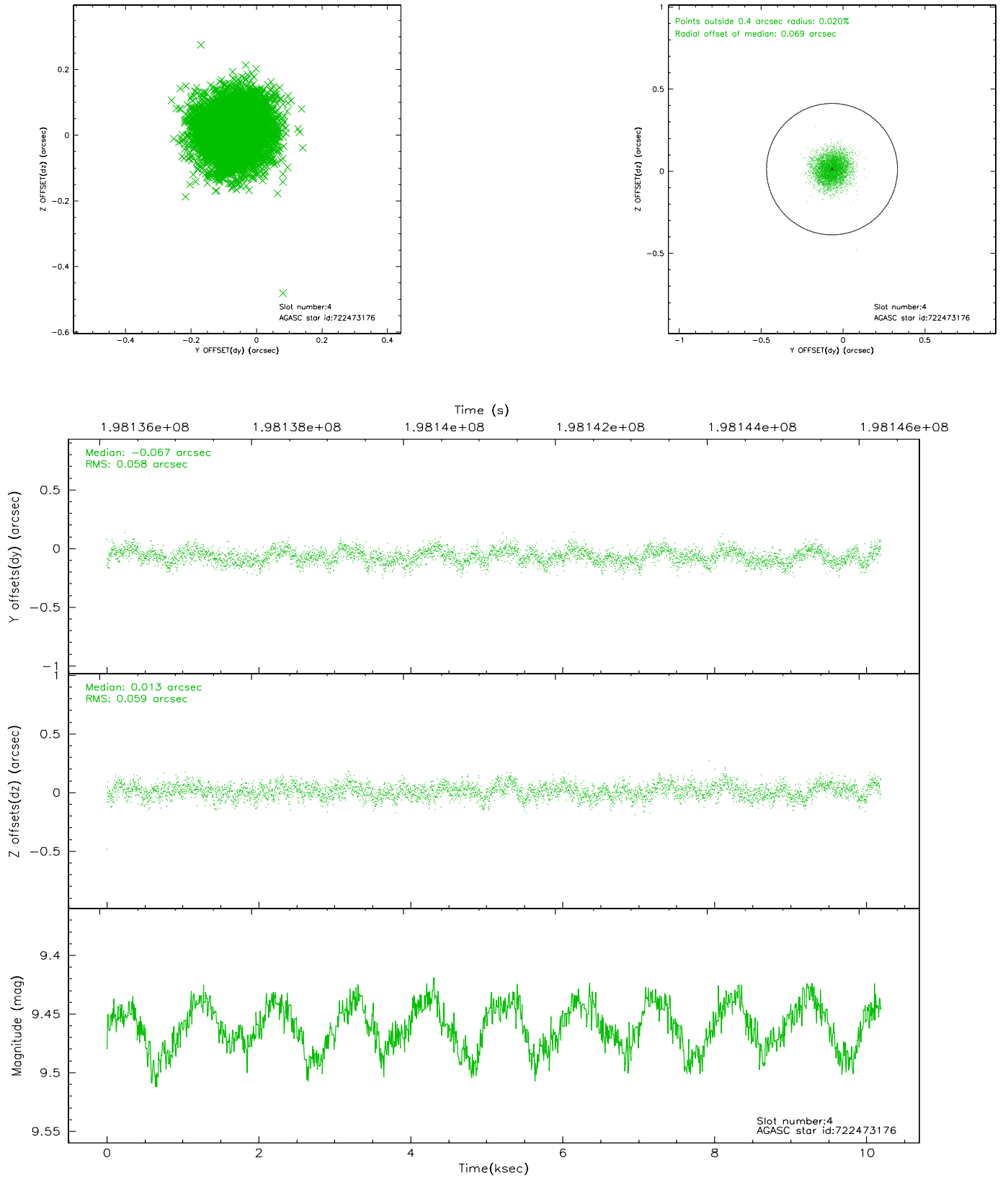


## 2.4 Star Slots

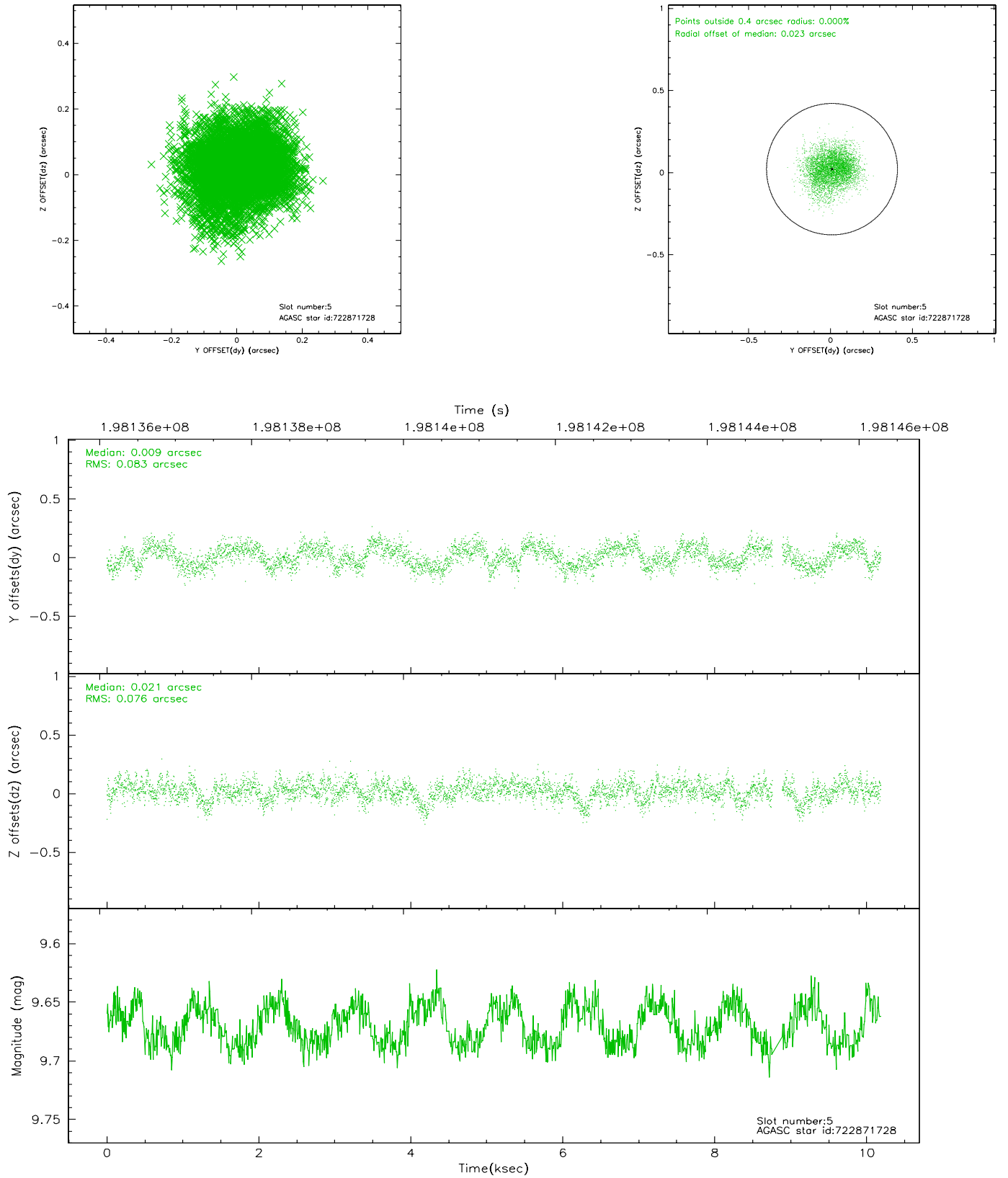
### 2.4.1 Slot 3



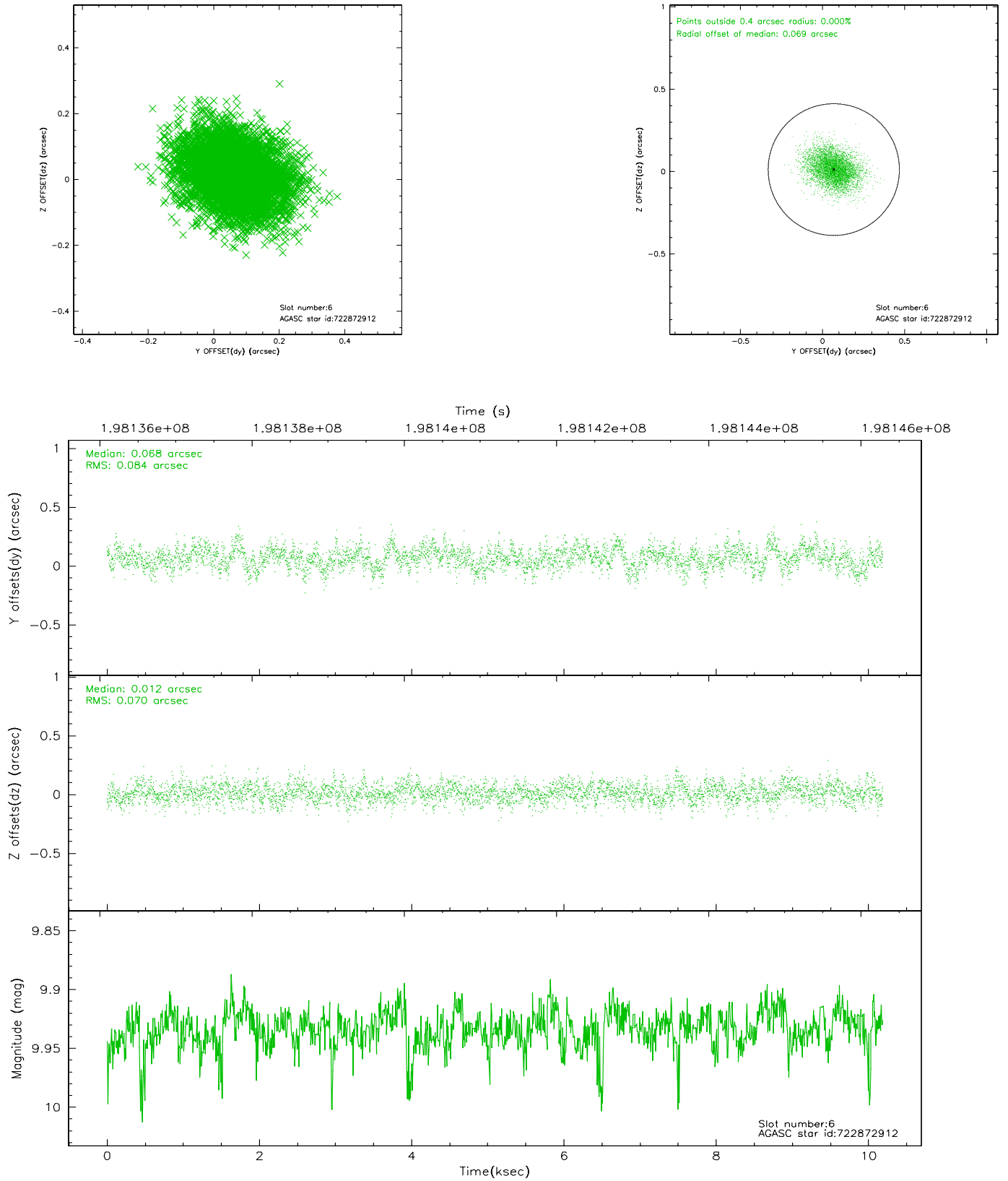
## 2.4.2 Slot 4



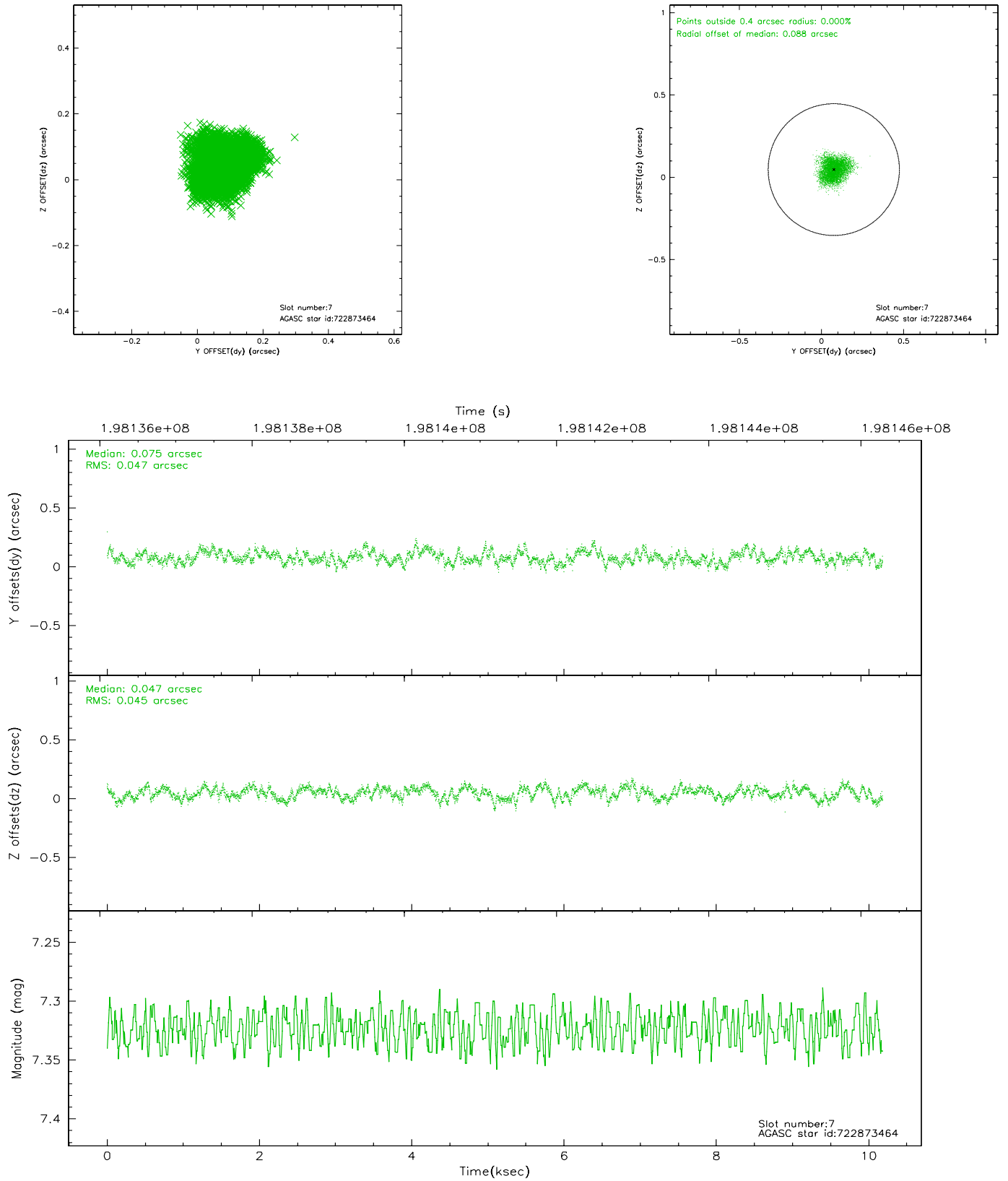
### 2.4.3 Slot 5



## 2.4.4 Slot 6

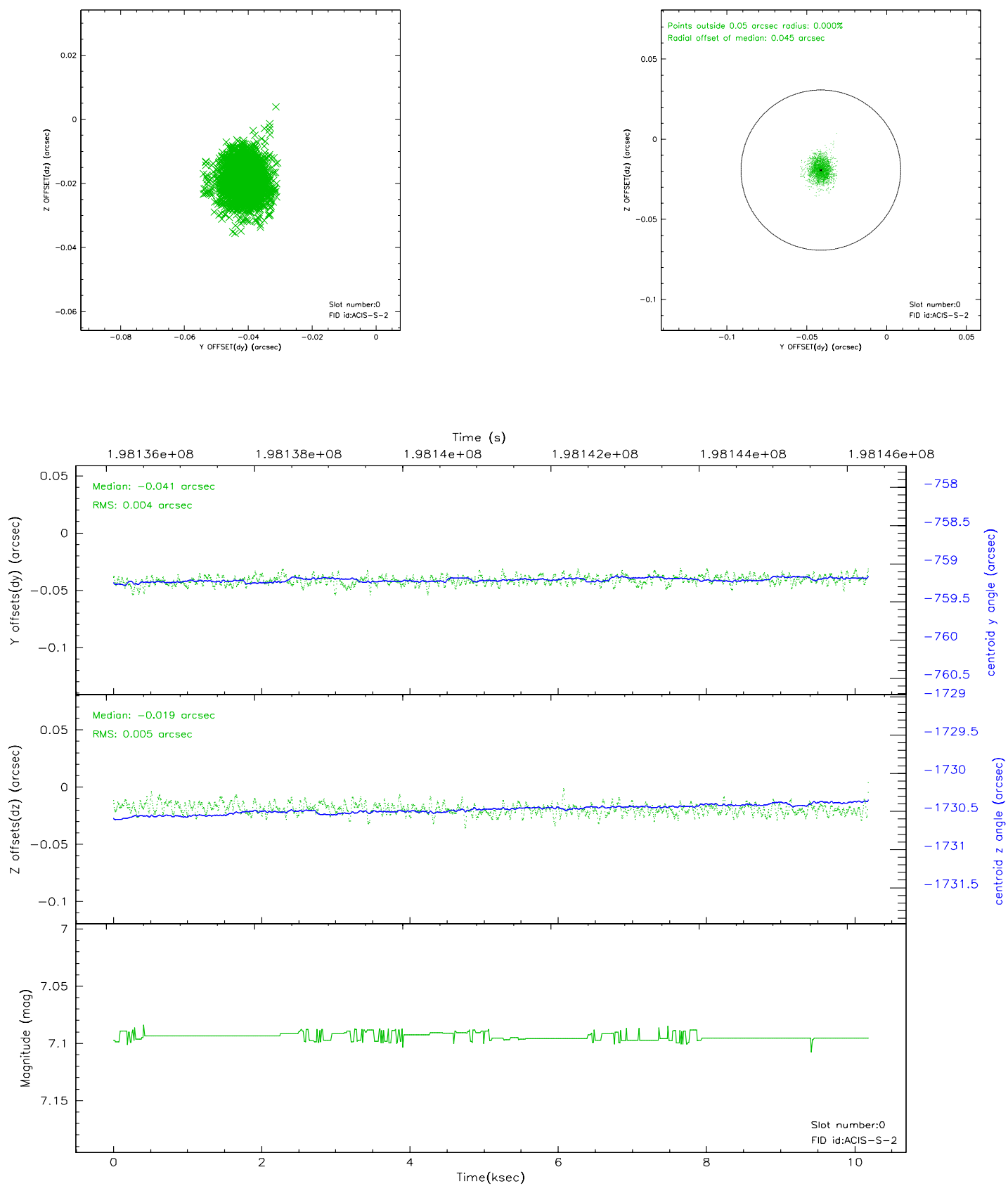


## 2.4.5 Slot 7

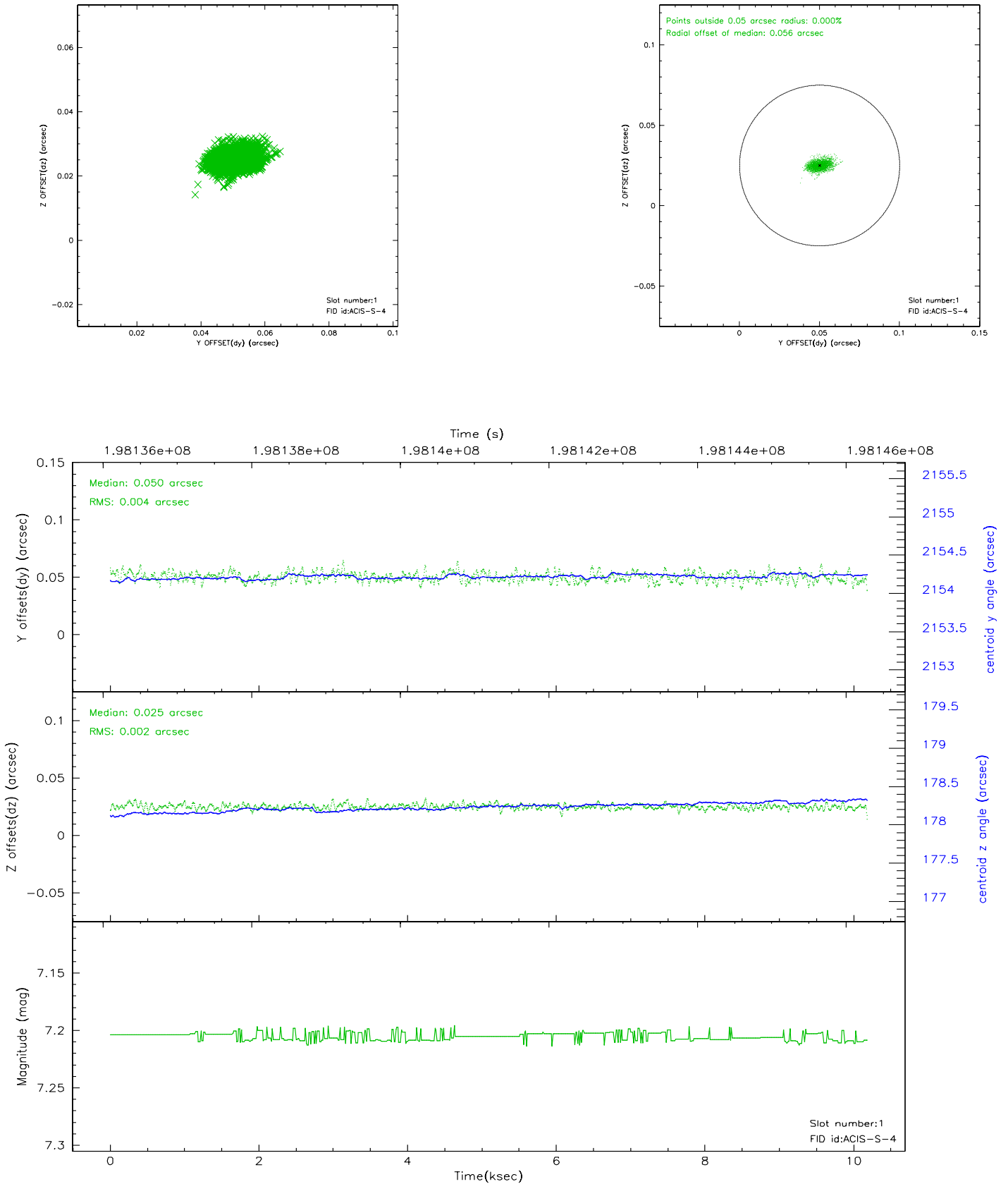


## 2.5 FID Slots

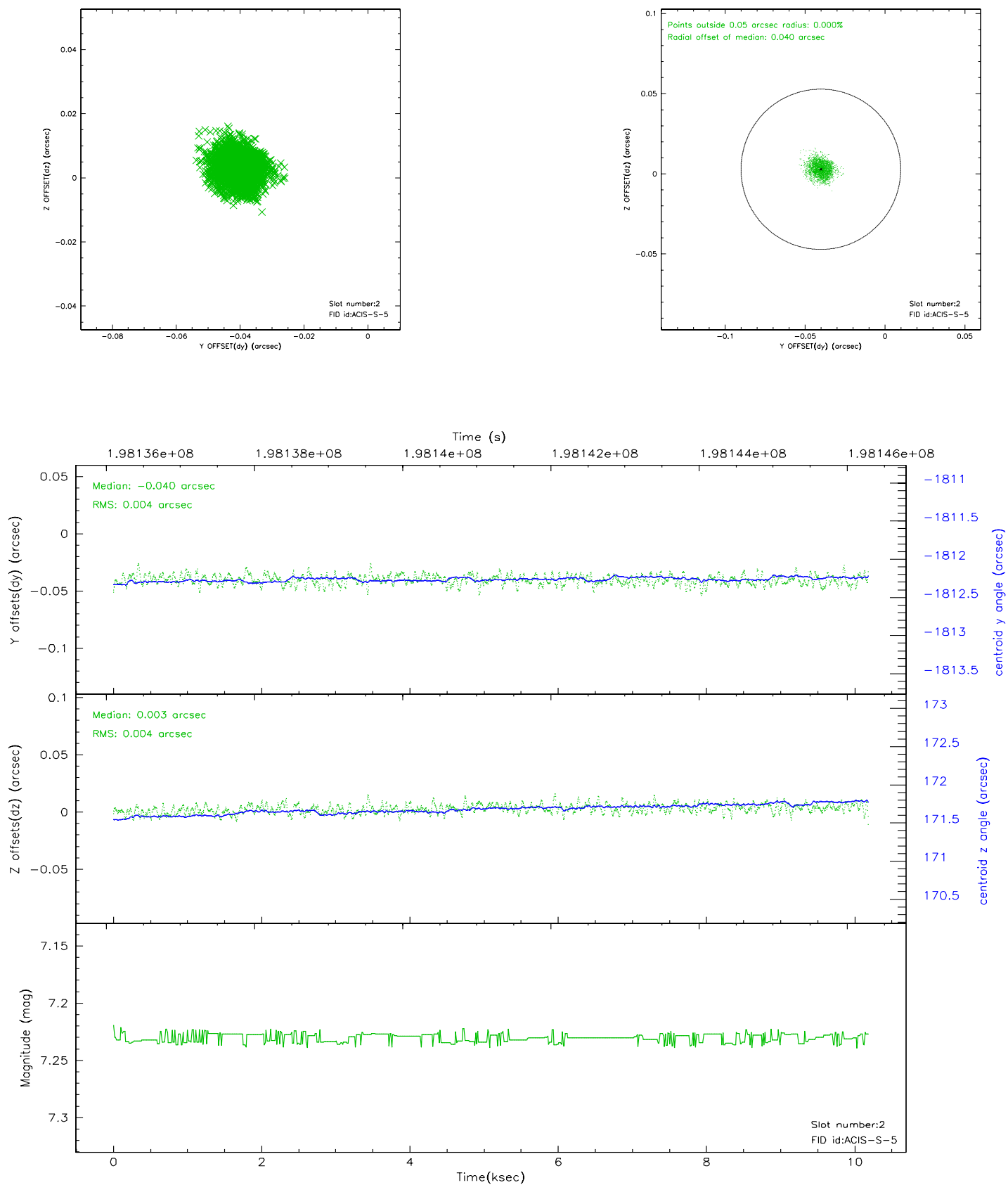
### 2.5.1 Slot 0



## 2.5.2 Slot 1

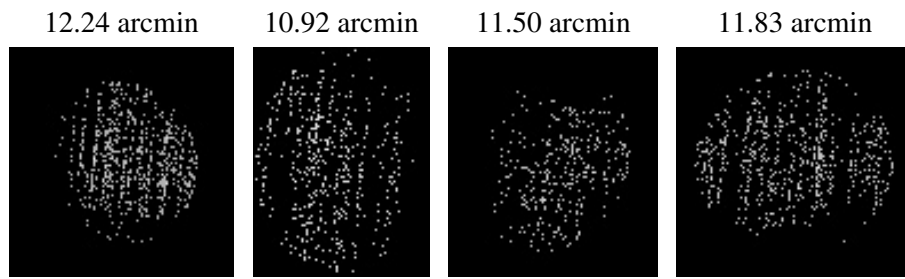


### 2.5.3 Slot 2





### 3 Point Sources



## A Summary

### A.1 Status

V&V Scientist	Beth Sundheim
V&V Date (YYYY-MM-DD)	2006.05.25
V&V Edition	1
V&V Disposition and Status	OK
V&V Charge Time	10.18

### A.2 Comments

Window constraint satisfied.