

# V&V Reference Report

## L2 ASCDS Version : 7.6.7.2

Observation 4786 - L2 Version 001  
Chandra X-Ray Center

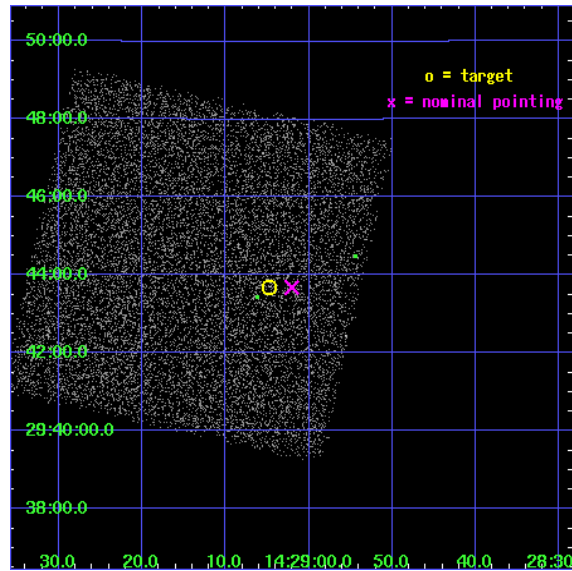
L2 Processing Date : May 18 2006

## Contents

<b>1</b>	<b>Front</b>	<b>2</b>
<b>2</b>	<b>OBI</b>	<b>3</b>
2.1	OBI . . . . .	3
2.1.1	Images . . . . .	3
2.1.2	Bias . . . . .	3
2.1.3	Parameters . . . . .	4
2.1.4	Events . . . . .	4
2.2	Compared Parameters . . . . .	5
2.3	Aspect . . . . .	6
2.4	Star Slots . . . . .	9
2.4.1	Slot 3 . . . . .	9
2.4.2	Slot 4 . . . . .	10
2.4.3	Slot 5 . . . . .	11
2.4.4	Slot 6 . . . . .	12
2.4.5	Slot 7 . . . . .	13
2.5	FID Slots . . . . .	14
2.5.1	Slot 0 . . . . .	14
2.5.2	Slot 1 . . . . .	15
2.5.3	Slot 2 . . . . .	16
<b>3</b>	<b>Point Sources</b>	<b>17</b>
<b>A</b>	<b>Summary</b>	<b>18</b>
A.1	Status . . . . .	18
A.2	Comments . . . . .	18

# 1 Front

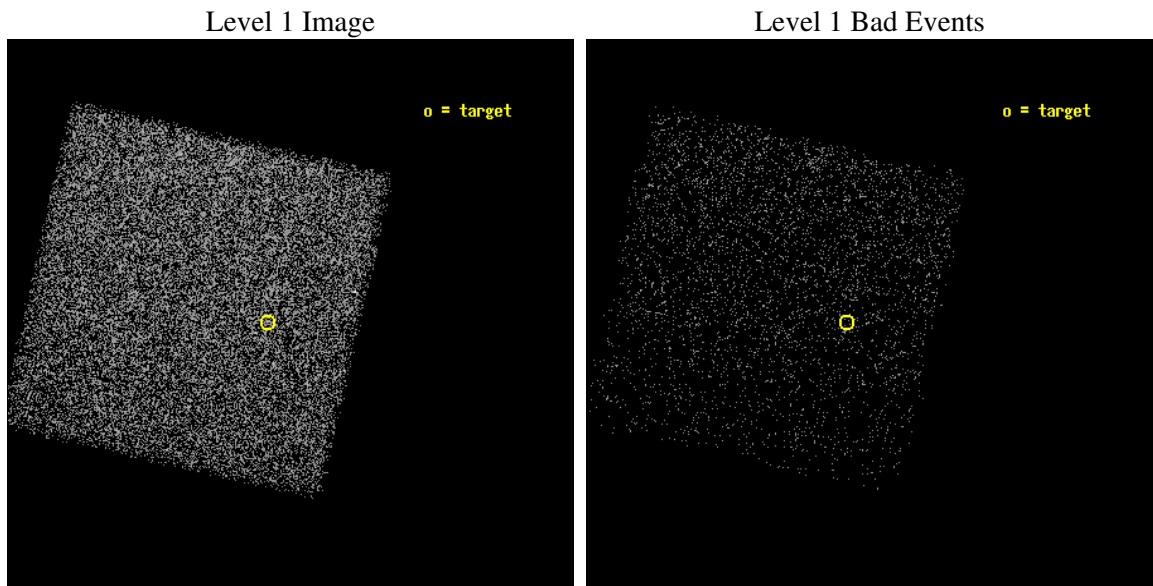
seq_num	700869
obs_id	4786
title	Anchoring the AGN X-ray Luminosity Function
observer	Dr. JOHN SALZER
object	F1425-1071
dtcycle	0
cycle	P
ra_targ	217.269583
dec_targ	29.7285
ra_nom	217.25862317963
dec_nom	29.728053465522
roll_nom	192.79868433422
revision	2
ontime	4434.0
livetime	4374.1614710757
ontime7	4434.0
l2events	15597



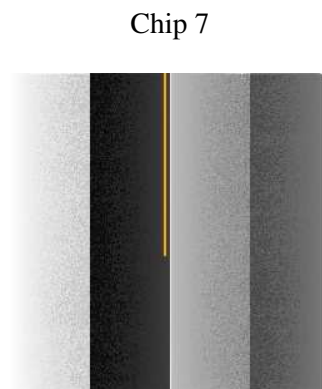
## 2 OBI

### 2.1 OBI

#### 2.1.1 Images



#### 2.1.2 Bias



### 2.1.3 Parameters

obi_num	0
ascdsver	7.6.7.2
caldbver	3.2.2
date	2006-05-18T21:20:25
revision	2

sched_exp_time	4000.000000
ontime	4646.6563051343
ontime7	4646.6563051343
l1events	43648

### 2.1.4 Events

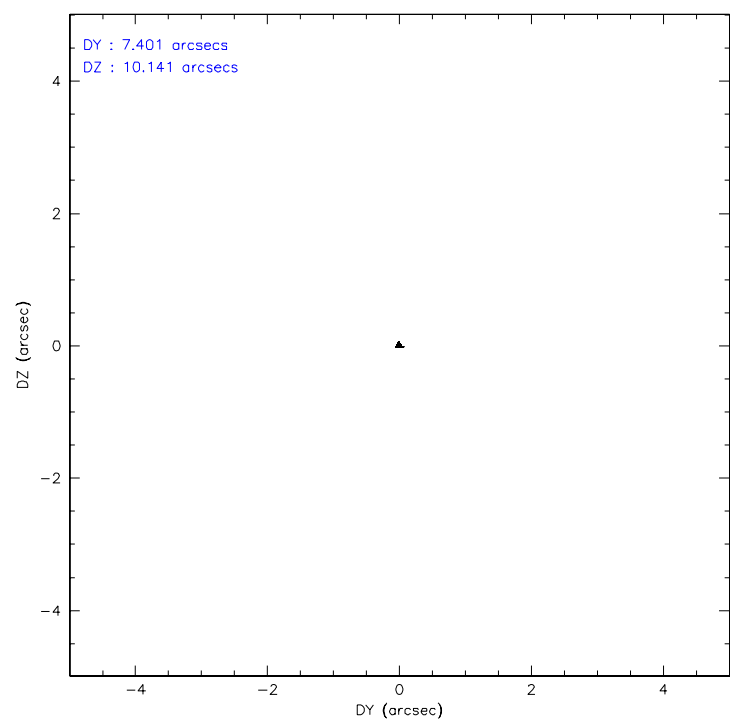
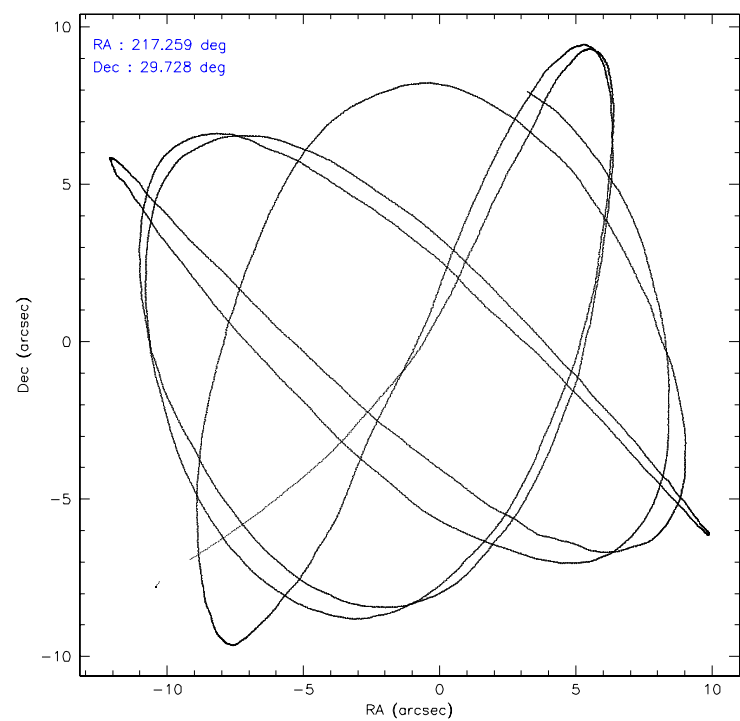
	<b>ccd 7</b>
level 1 events	43648
rejected events	27602
rejected %	63%

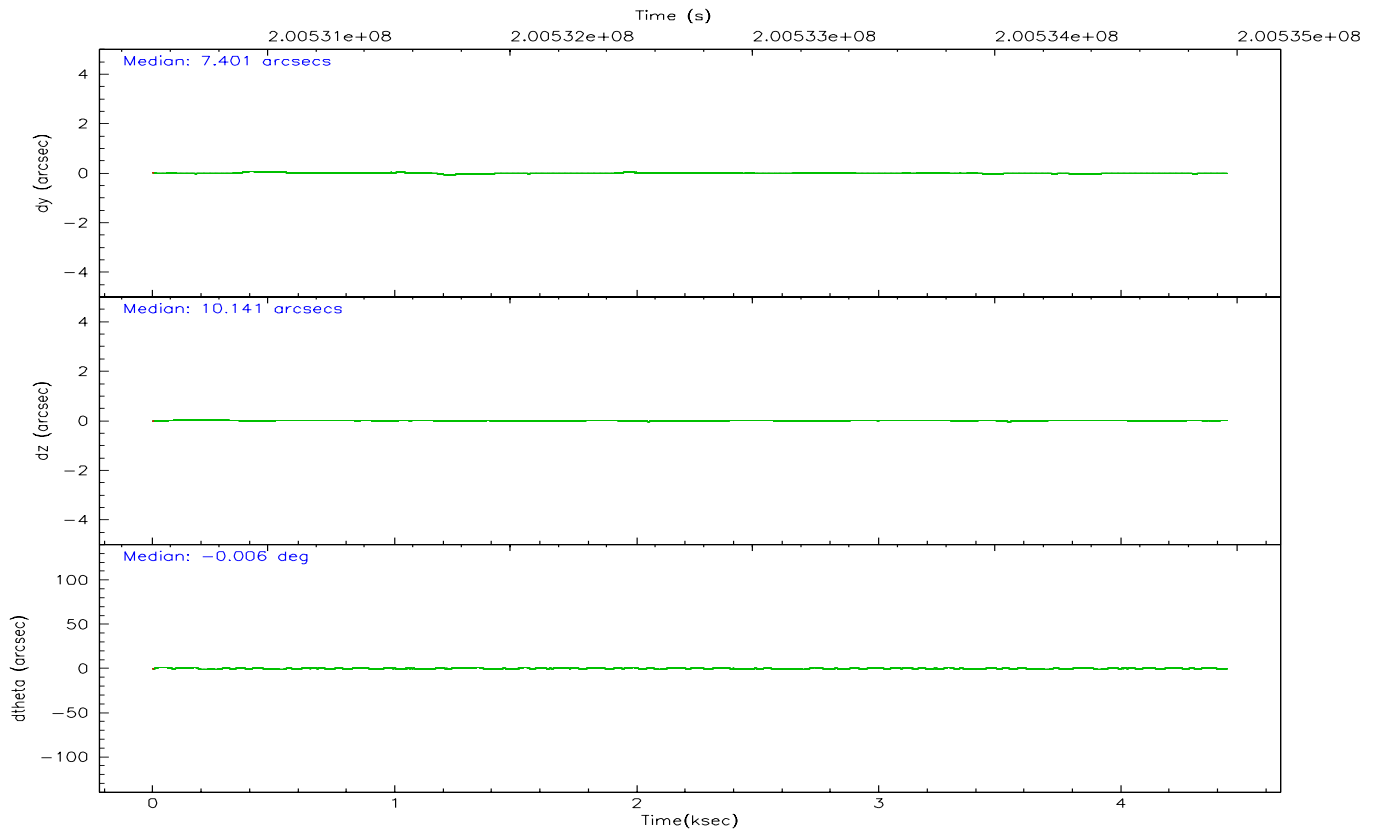
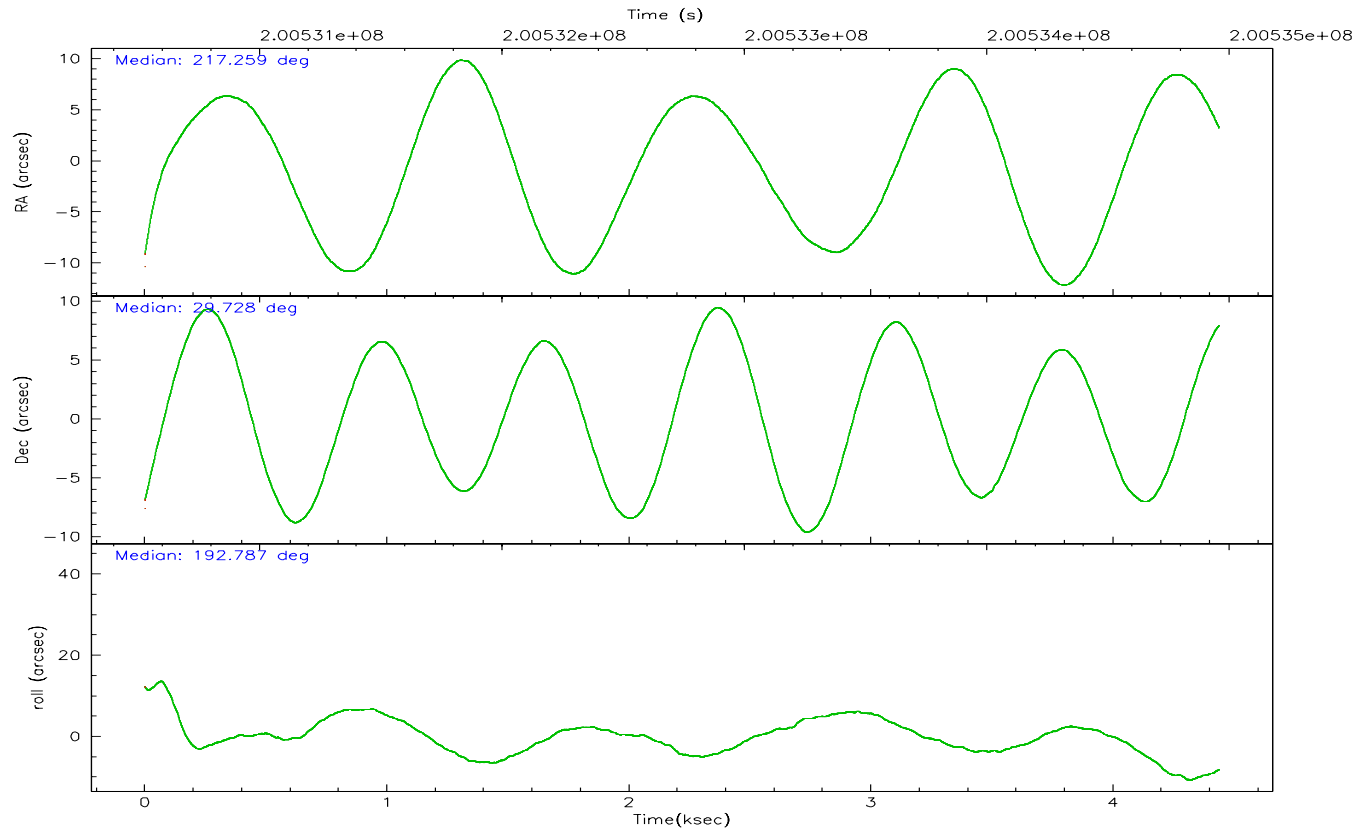
	<b>ccd 7</b>
grade 0 events	993
	2%
grade 1 events	24
	0%
grade 2 events	4094
	9%
grade 3 events	902
	2%
grade 4 events	805
	1%
grade 5 events	2849
	6%
grade 6 events	10027
	22%
grade 7 events	23954
	54%

## 2.2 Compared Parameters

Parameter	Planned	Actual	Parameter	Planned	Actual
Instrument	ACIS	ACIS	Obspar format version number	6	6
Detector	ACIS-7	ACIS-7	Obspar file type	PREDICTED	ACTUAL
Grating	NONE	NONE	Obspar update status	NONE	UPDATED
Data mode	FAINT	FAINT	On-chip summing requested	N	N
Observation mode	POINTING	POINTING	Subarray requested	NONE	NONE
Pointing RA	217.281178	217.2586231796341	Alternating exposures requested	N	N
Pointing Dec	29.746811	29.72805346552219	Primary exposure time	0.000000	3
Pointing Roll	192.630870	192.7986843342178			
SIM focus pos (mm)	-0.684267	-0.6828225247311905			
SIM defocus (mm)	0	0.001444936568705701			
SIM translation stage pos (mm)	-190.132523	-190.1400660498719			
SIM translation stage offset (mm)	0	0.00754346686406393			
Observation start time	200530968.184000	200529881.16509			
Observation start date	2004-05-09T23:01:44	2004-05-09T22:44:41			
Observation end time	200534968.184000	200535141.97782			
Observation end date	2004-05-10T00:08:24	2004-05-10T00:12:21			
Read mode	TIMED	TIMED			

2.3 Aspect





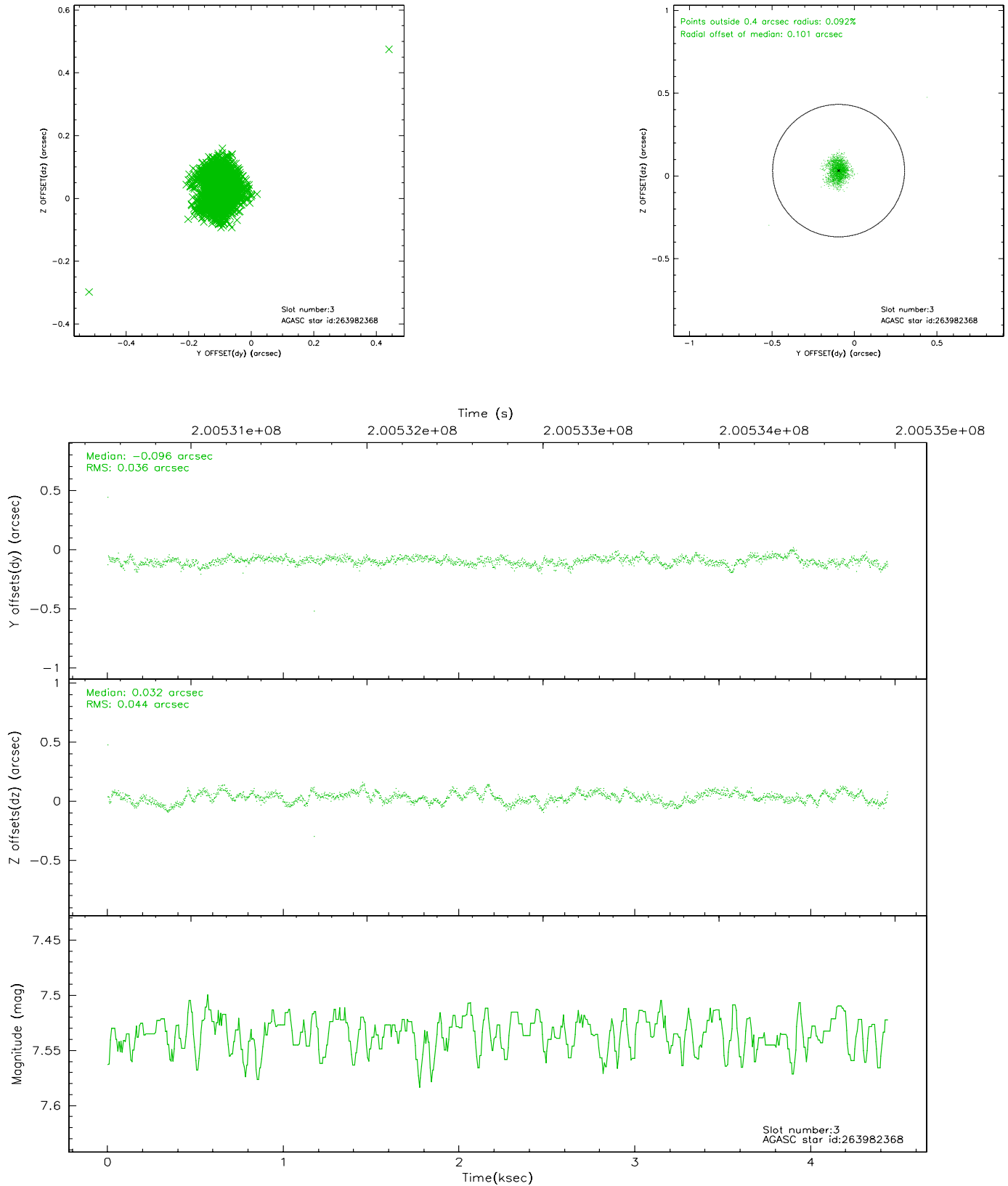
### Slot Statistics

slot	status	id	mag	n_pts	med_dy	med_dz	dr1	dr2	ra	dec	mean_y	mean_z
0	FID	ACIS-S-1	7.18	1083	-0.002	-0.012	0.007	0.011	0.000000	0.000000	935.88	-1727.03
1	FID	ACIS-S-4	7.20	1083	0.034	0.013	0.005	0.009	0.000000	0.000000	2154.08	175.73
2	FID	ACIS-S-5	7.23	1083	-0.059	0.011	0.005	0.010	0.000000	0.000000	-1811.28	170.86
3	GUIDE	263982368	7.53	2166	-0.096	0.032	0.058	0.093	216.994811	29.263912	1257.92	1498.97
4	GUIDE	263985768	9.92	2159	-0.009	0.138	0.119	0.190	217.136984	29.914981	308.02	-687.89
5	GUIDE	263986112	9.97	2165	0.124	-0.249	0.111	0.179	216.905902	29.652155	1220.69	73.71
6	GUIDE	264904288	10.04	2162	-0.039	0.028	0.112	0.187	217.760081	29.622779	-1364.47	760.43
7	GUIDE	334634936	9.82	2106	0.018	0.052	0.110	0.179	216.742666	30.165158	1305.94	-1839.54

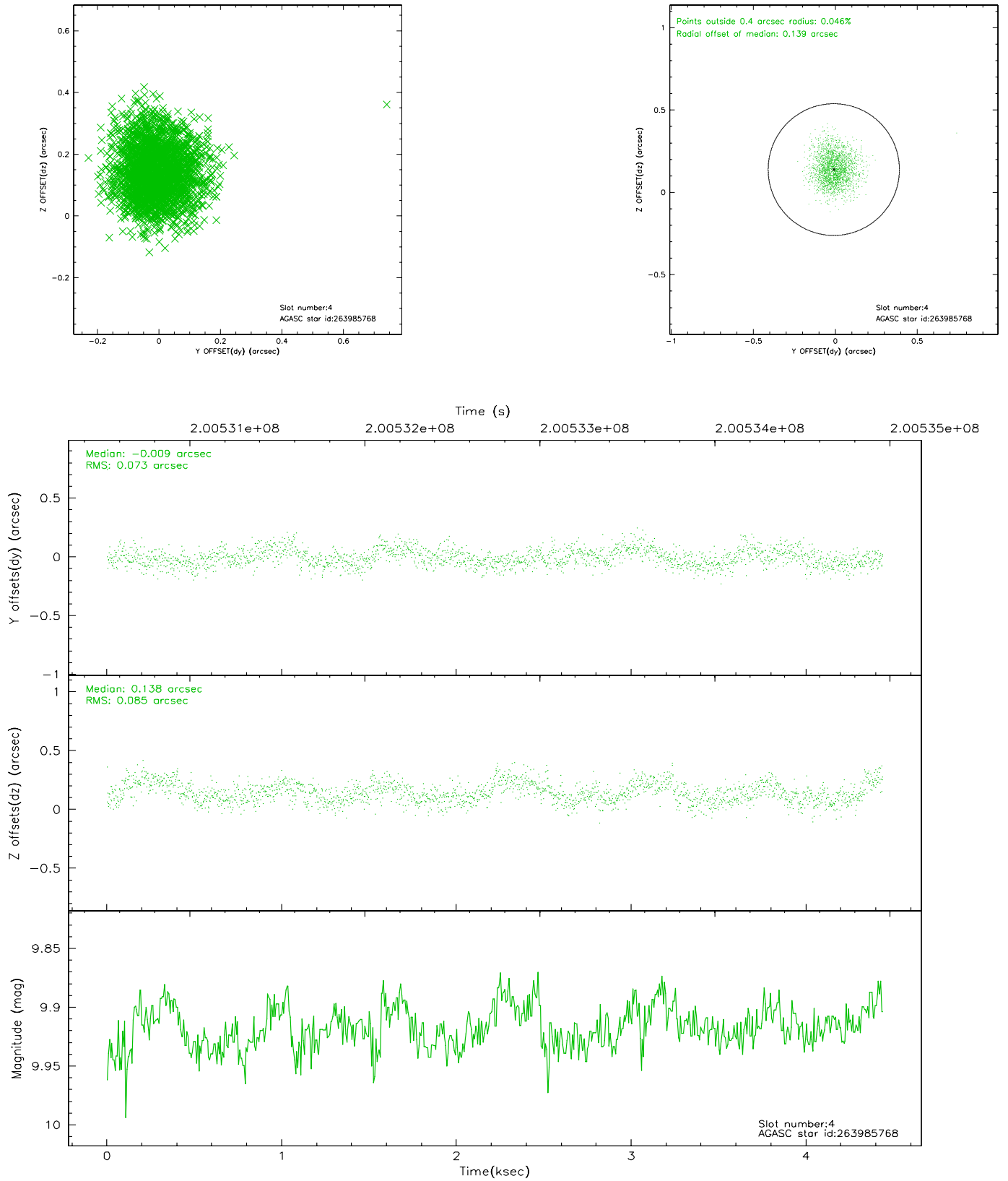


## 2.4 Star Slots

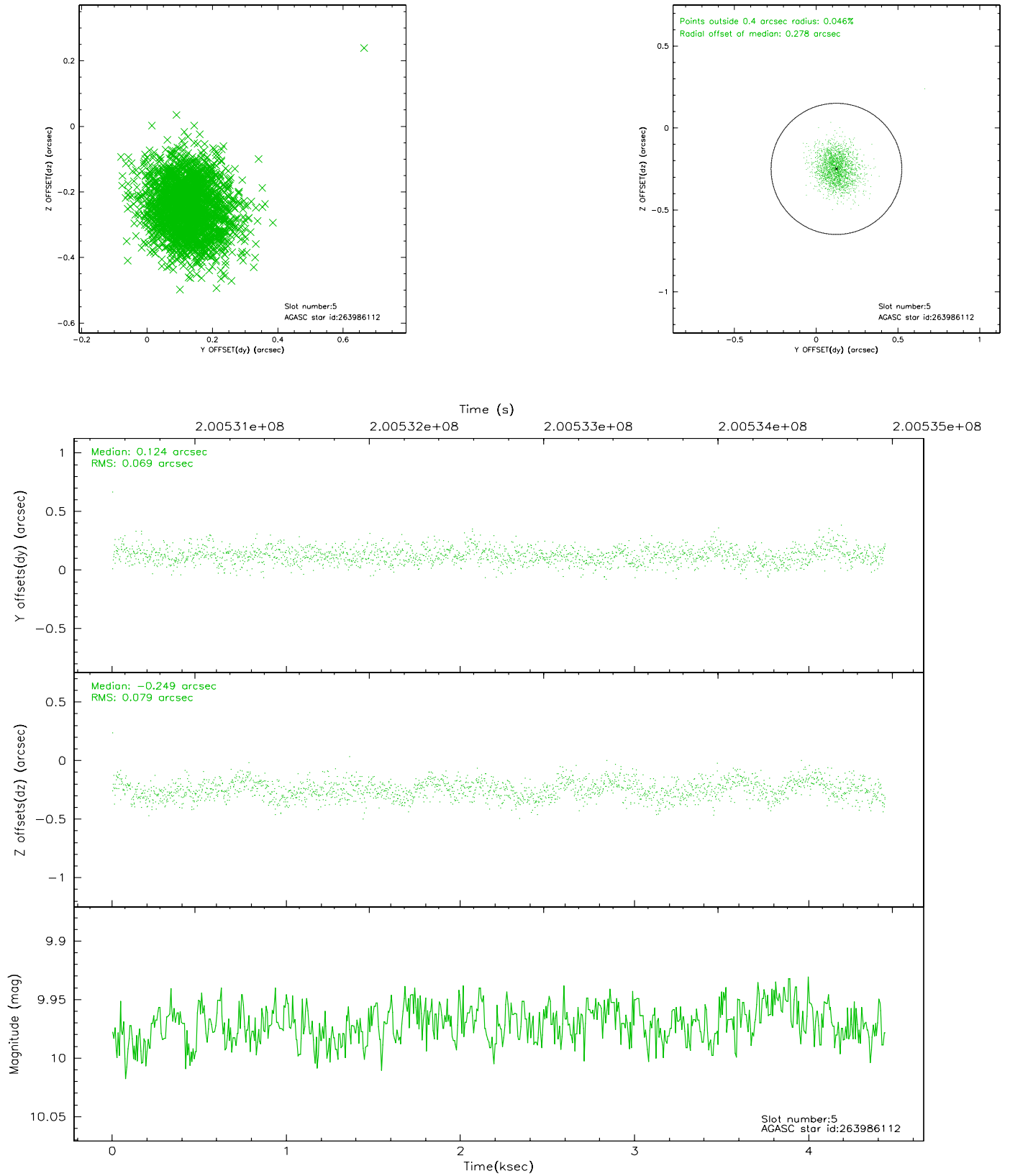
### 2.4.1 Slot 3



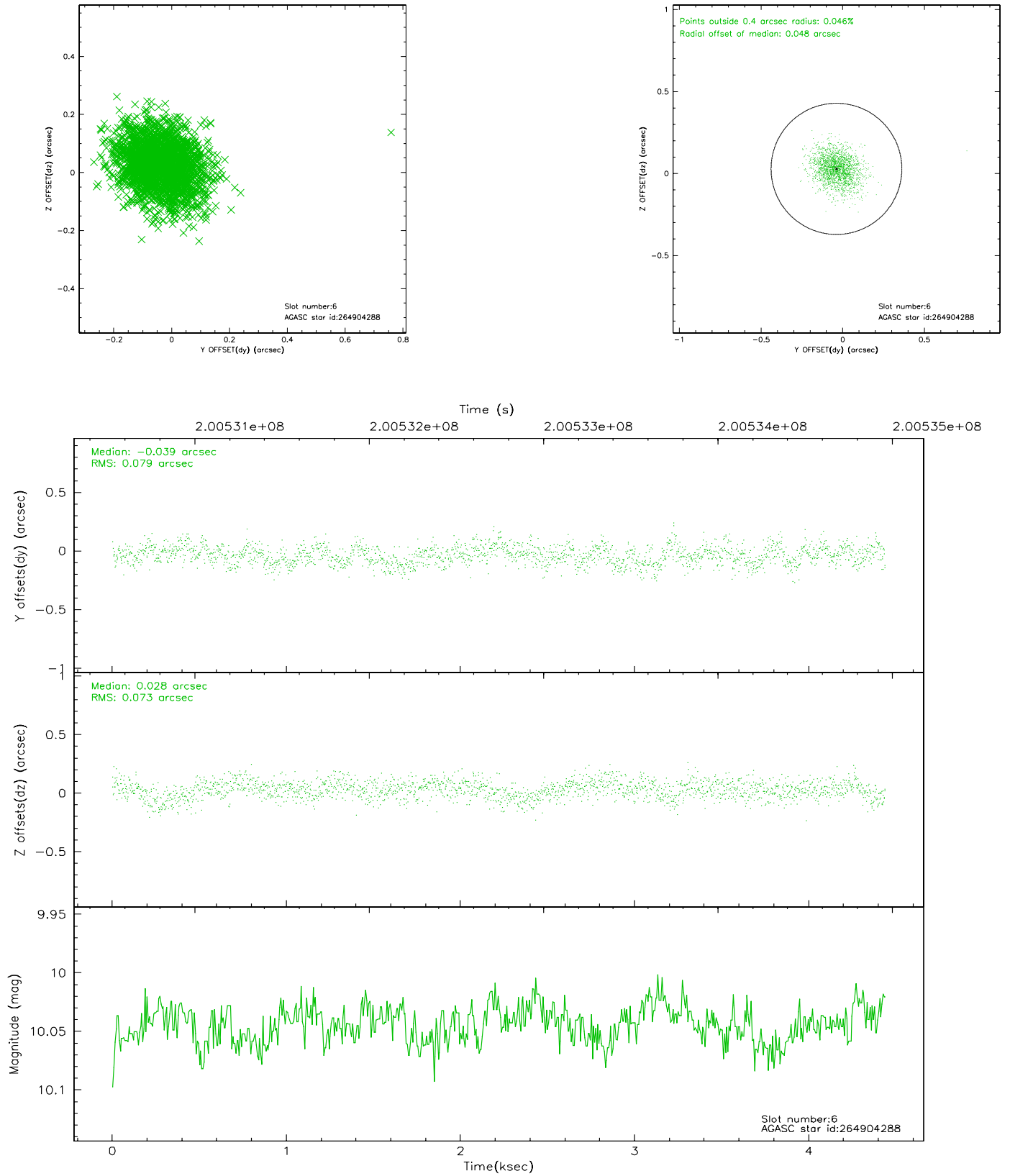
## 2.4.2 Slot 4



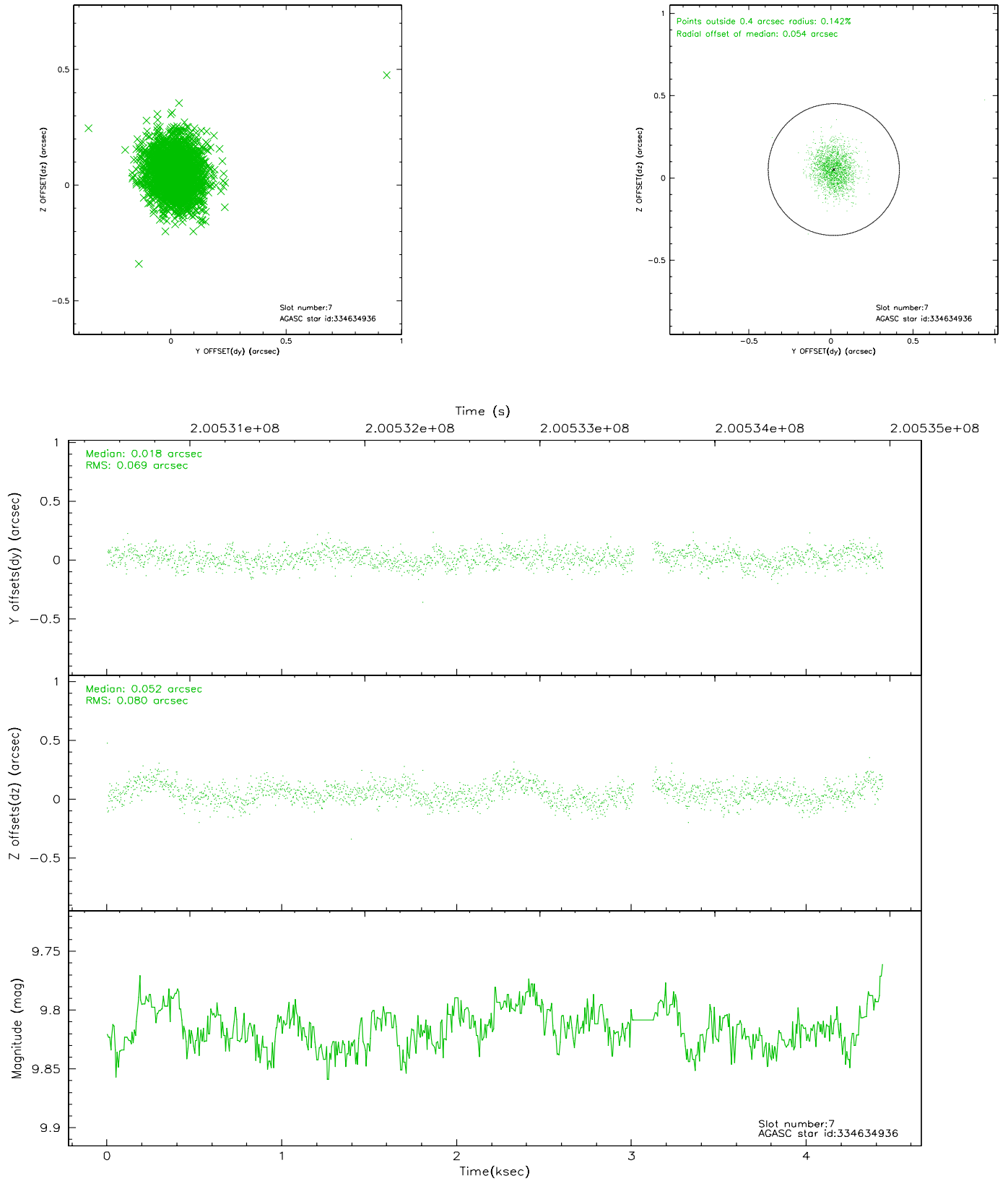
### 2.4.3 Slot 5



## 2.4.4 Slot 6

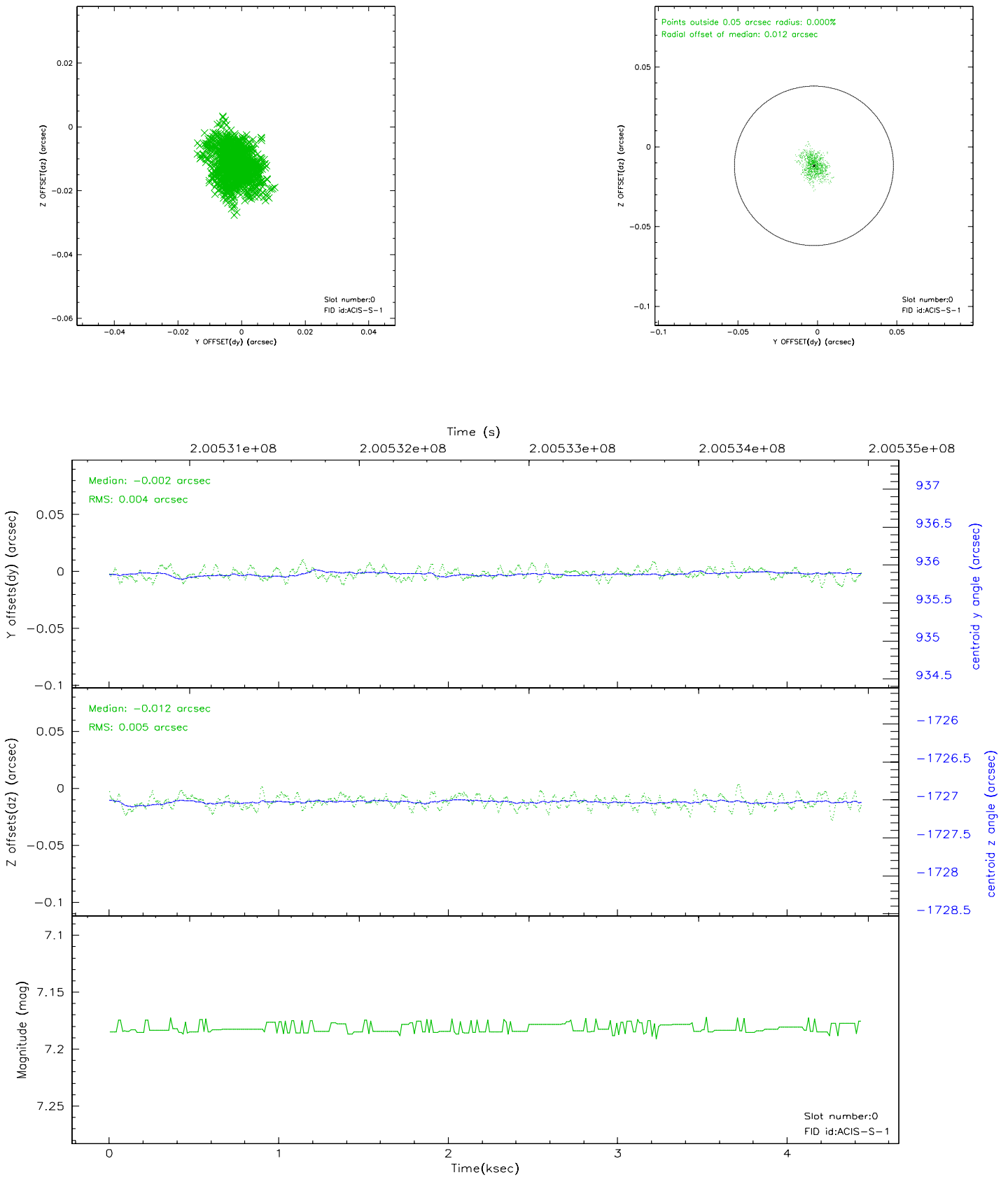


## 2.4.5 Slot 7

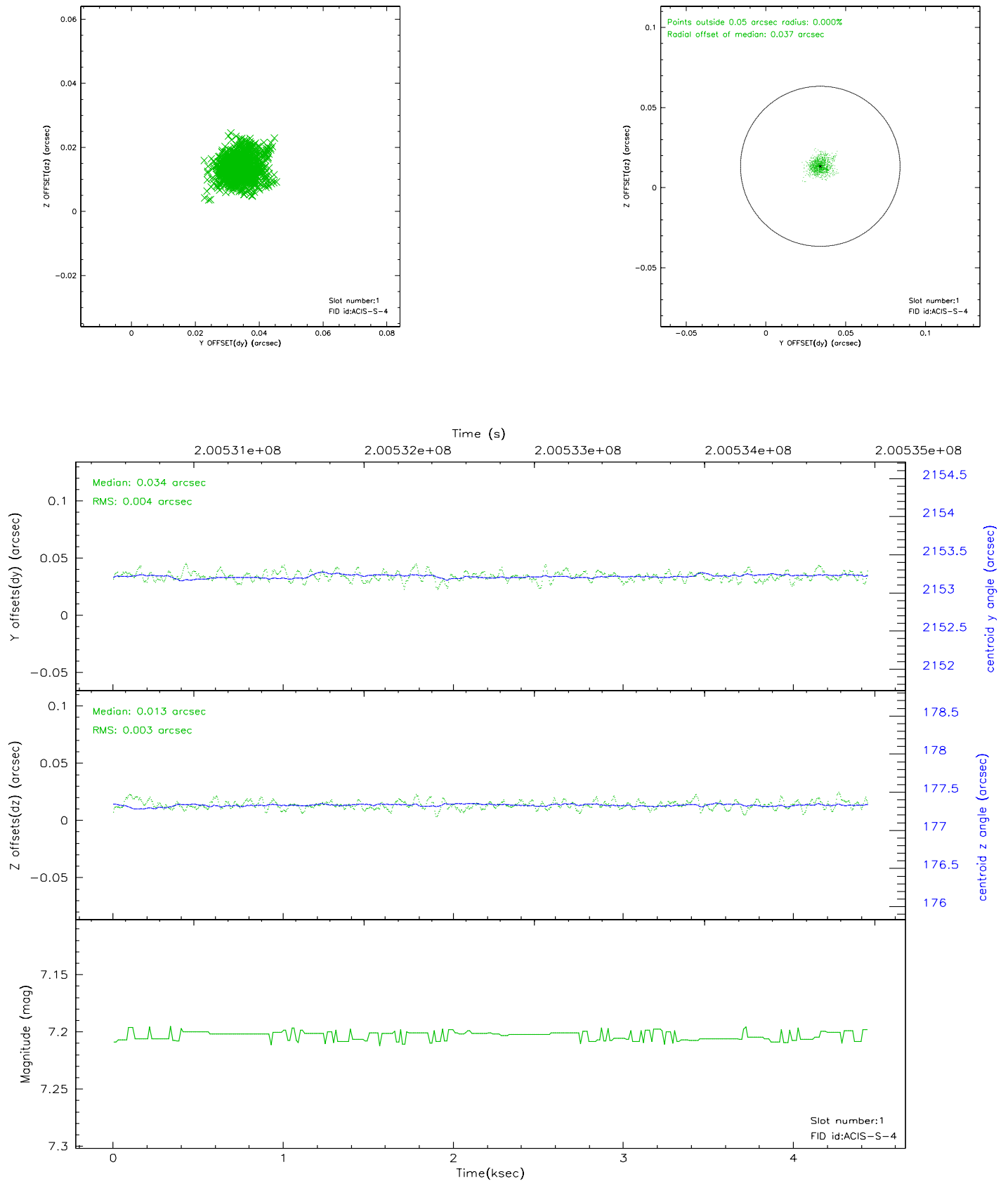


## 2.5 FID Slots

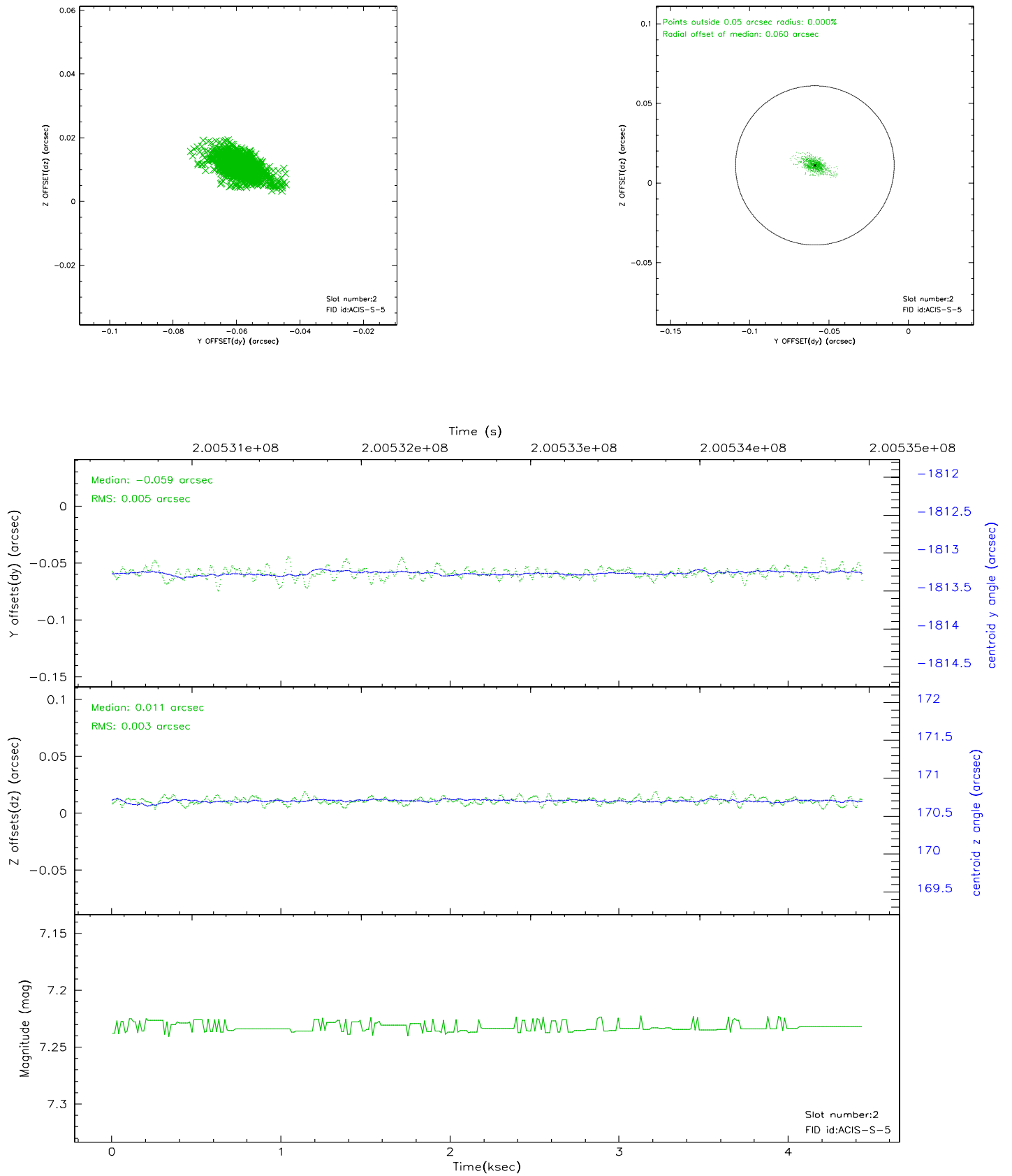
### 2.5.1 Slot 0



## 2.5.2 Slot 1



### 2.5.3 Slot 2





### 3 Point Sources

## A Summary

### A.1 Status

V&V Scientist	Jen Lauer
V&V Date (YYYY-MM-DD)	2006.05.19
V&V Edition	1
V&V Disposition and Status	OK
V&V Charge Time	4.434

### A.2 Comments