

V&V Reference Report

L2 ASCDS Version : 7.6.7.1

Observation 4775 - L2 Version 001
Chandra X-Ray Center

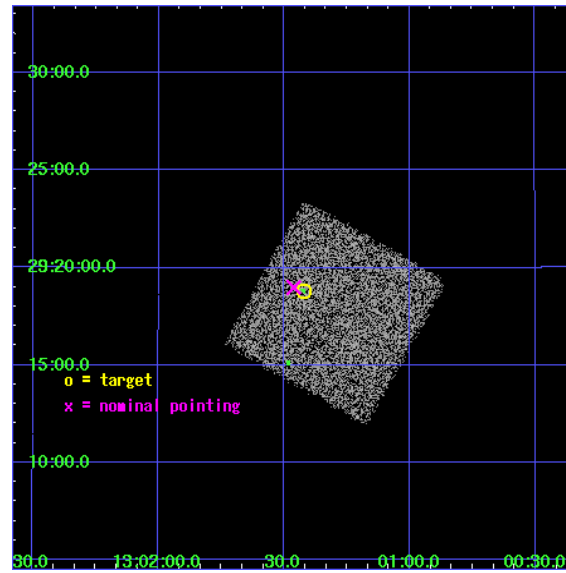
L2 Processing Date : Apr 13 2006

Contents

1	Front	2
2	OBI	3
2.1	OBI	3
2.1.1	Images	3
2.1.2	Bias	3
2.1.3	Parameters	4
2.1.4	Events	4
2.2	Compared Parameters	5
2.3	Aspect	6
2.4	Star Slots	9
2.4.1	Slot 3	9
2.4.2	Slot 4	10
2.4.3	Slot 5	11
2.4.4	Slot 6	12
2.4.5	Slot 7	13
2.5	FID Slots	14
2.5.1	Slot 0	14
2.5.2	Slot 1	15
2.5.3	Slot 2	16
3	Point Sources	17
A	Summary	18
A.1	Status	18
A.2	Comments	18

1 Front

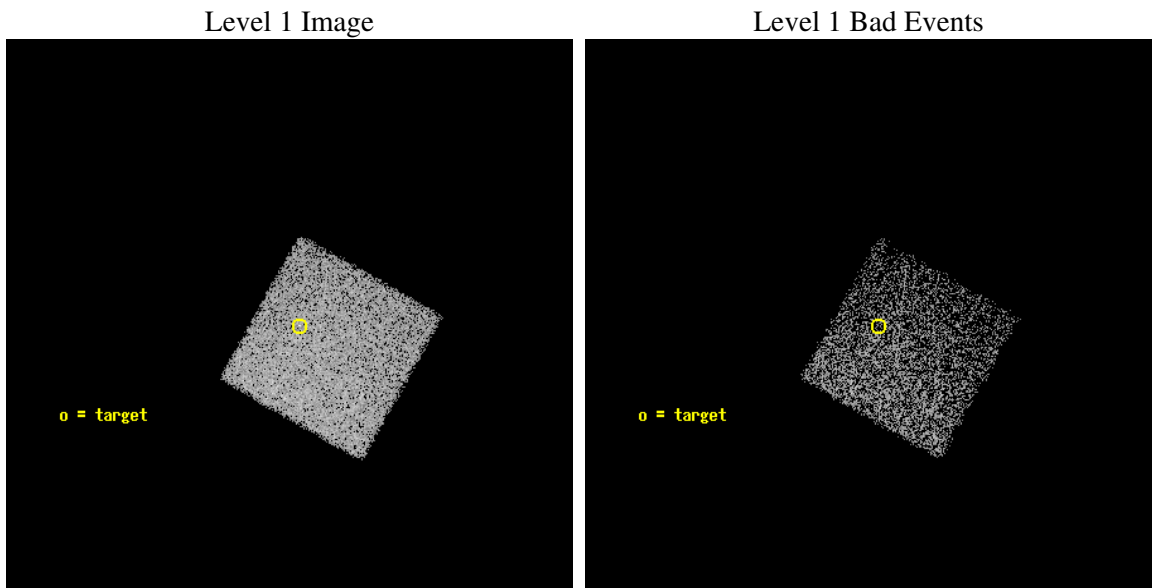
seq_num	700858
obs_id	4775
title	Anchoring the AGN X-ray Luminosity Function
observer	Dr. JOHN SALZER
object	F1300-2556
dtcycle	0
cycle	P
ra_targ	195.355
dec_targ	29.313333
ra_nom	195.36535371322
dec_nom	29.31653055472
roll_nom	29.654109962199
revision	2
ontime	3843.0
livetime	3791.1372425223
ontime7	3843.0
l2events	15527



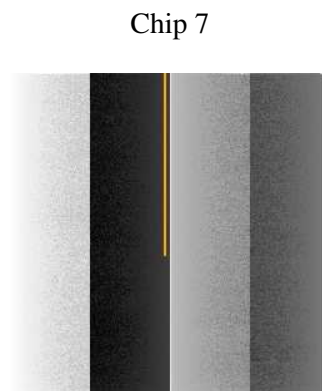
2 OBI

2.1 OBI

2.1.1 Images



2.1.2 Bias



2.1.3 Parameters

obi_num	1
ascdsver	7.6.7.1
caldsver	3.2.1
date	2006-04-13T17:22:46
revision	2

sched_exp_time	4000.000000
ontime	3846.868242234
ontime7	3846.868242234
l1events	41571

2.1.4 Events

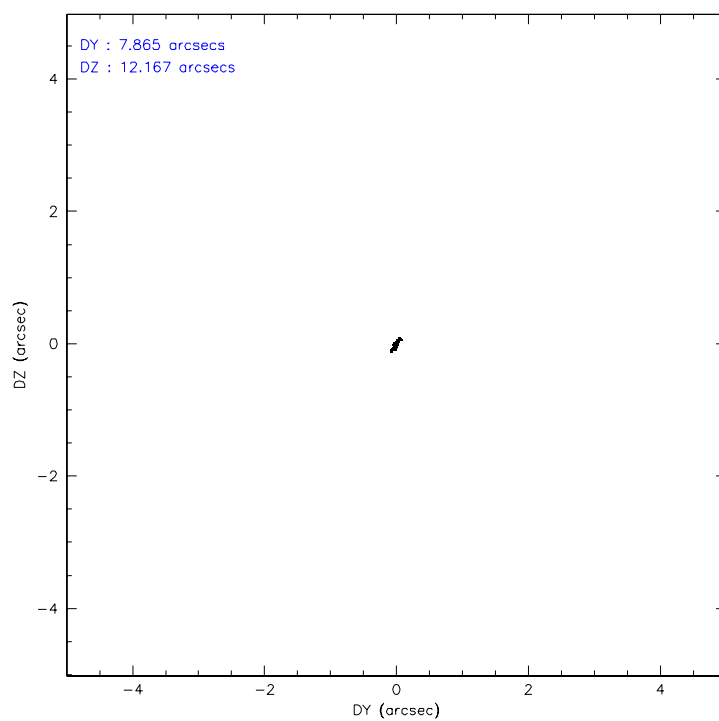
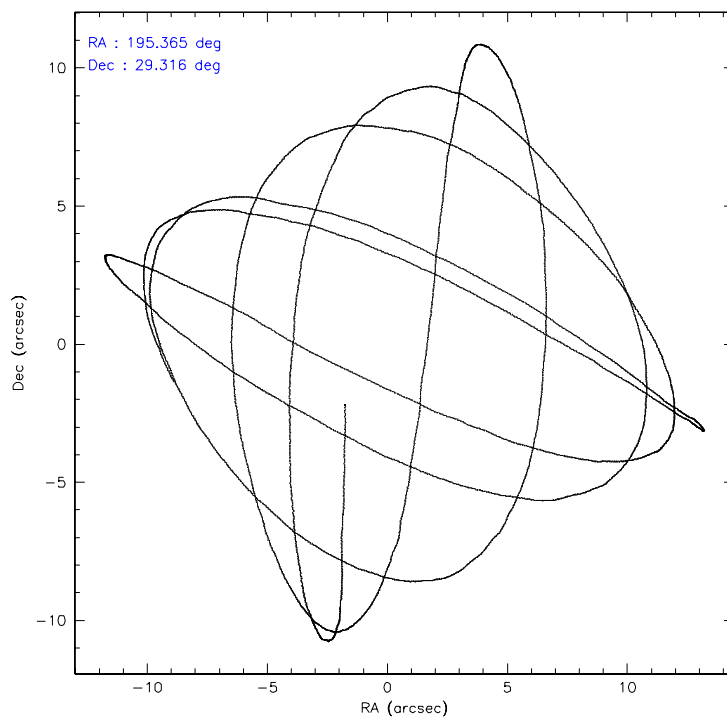
	ccd 7
level 1 events	41571
rejected events	25604
rejected %	61%

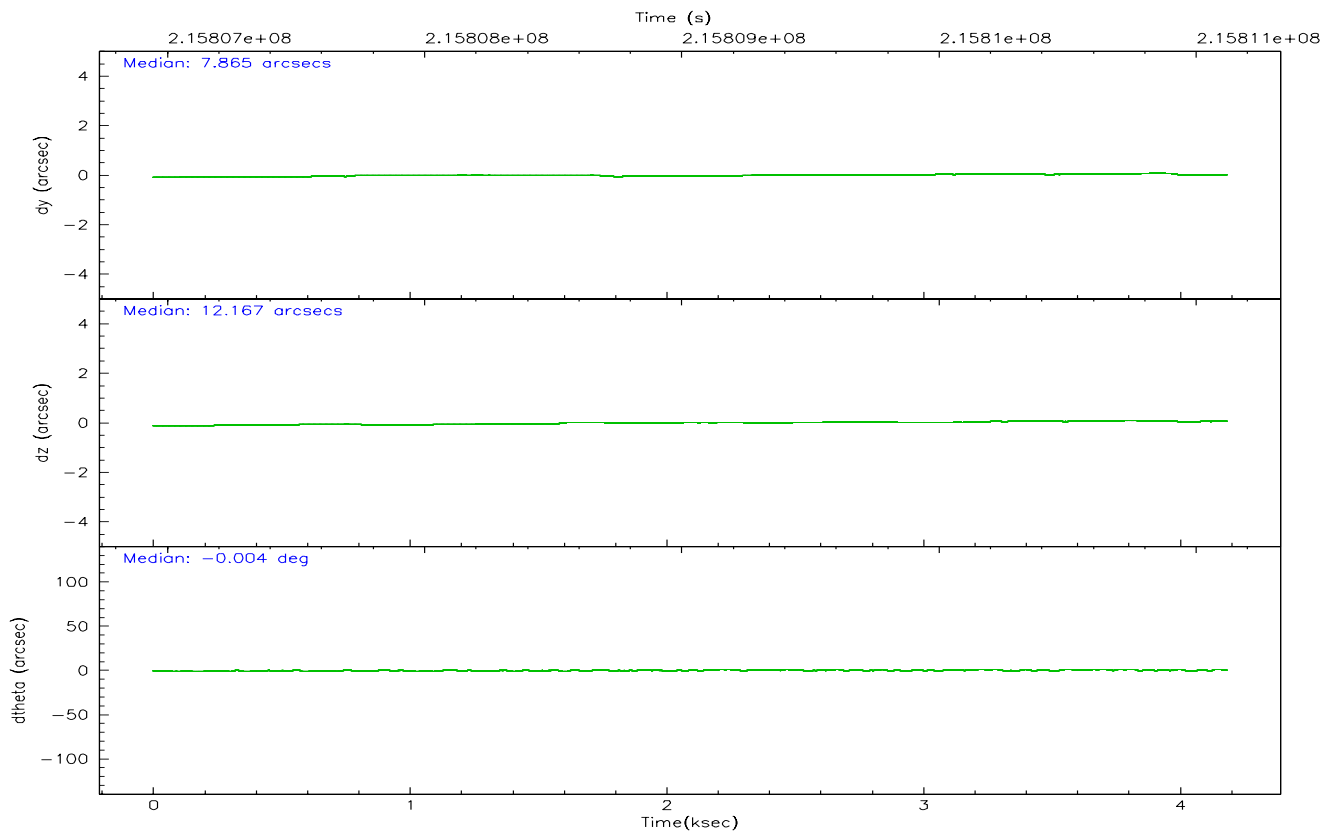
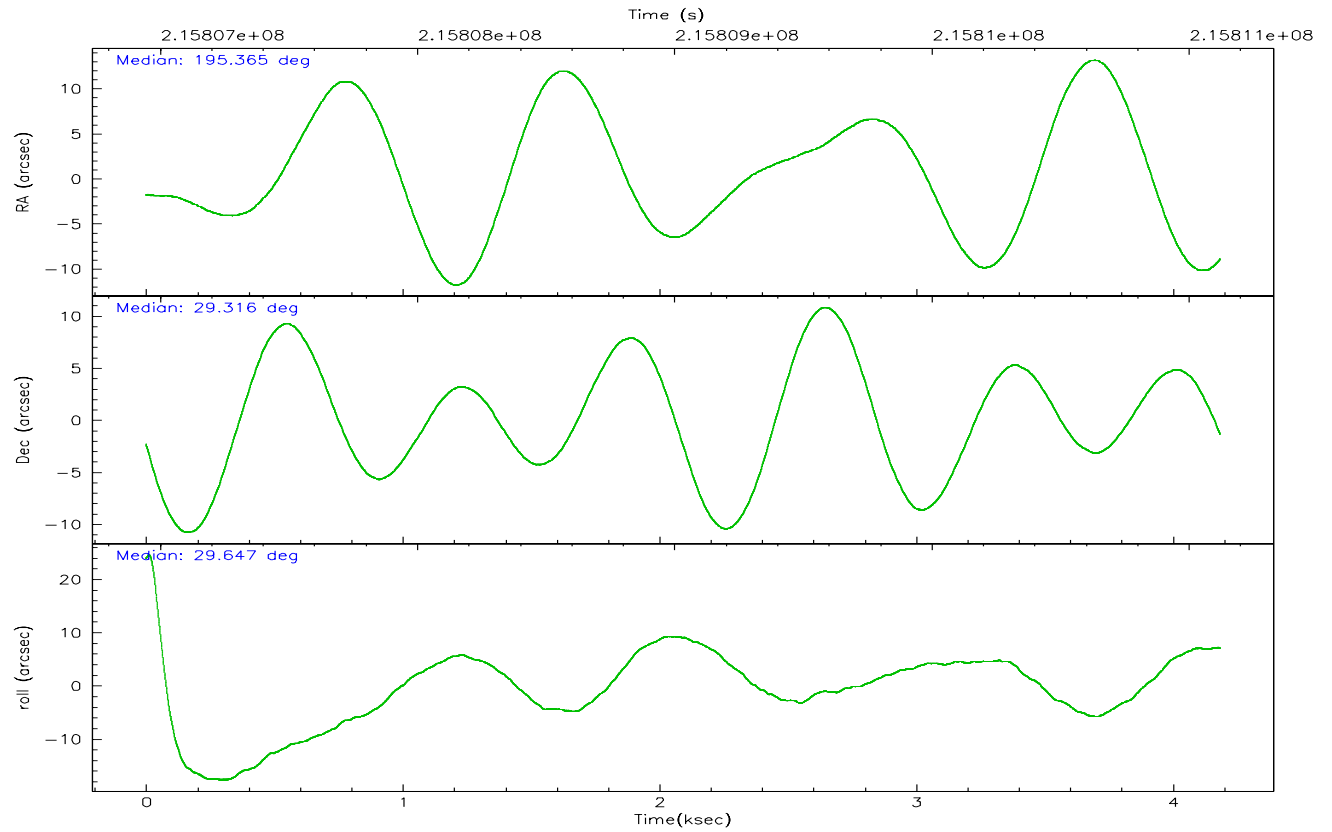
	ccd 7
grade 0 events	939
	2%
grade 1 events	35
	0%
grade 2 events	3993
	9%
grade 3 events	788
	1%
grade 4 events	805
	1%
grade 5 events	2607
	6%
grade 6 events	9482
	22%
grade 7 events	22922
	55%

2.2 Compared Parameters

Parameter	Planned	Actual	Parameter	Planned	Actual
Instrument	ACIS	ACIS	Obspar format version number	6	6
Detector	ACIS-7	ACIS-7	Obspar file type	PREDICTED	ACTUAL
Grating	NONE	NONE	Obspar update status	NONE	UPDATED
Data mode	FAINT	FAINT	On-chip summing requested	N	N
Observation mode	POINTING	POINTING	Subarray requested	NONE	NONE
Pointing RA	195.350037	195.36535371322	Alternating exposures requested	N	N
Pointing Dec	29.292887	29.31653055472004	Primary exposure time	0.000000	3
Pointing Roll	29.504989	29.65410996219899			
SIM focus pos (mm)	-0.684267	-0.6828225247311905			
SIM defocus (mm)	0	0.001444936568705701			
SIM translation stage pos (mm)	-190.132523	-190.1400660498719			
SIM translation stage offset (mm)	0	0.00754346686406393			
Observation start time	215807127.184000	215806728.35695			
Observation start date	2004-11-02T18:24:23	2004-11-02T18:18:48			
Observation end time	215811127.184000	215812334.5947			
Observation end date	2004-11-02T19:31:03	2004-11-02T19:52:14			
Read mode	TIMED	TIMED			

2.3 Aspect



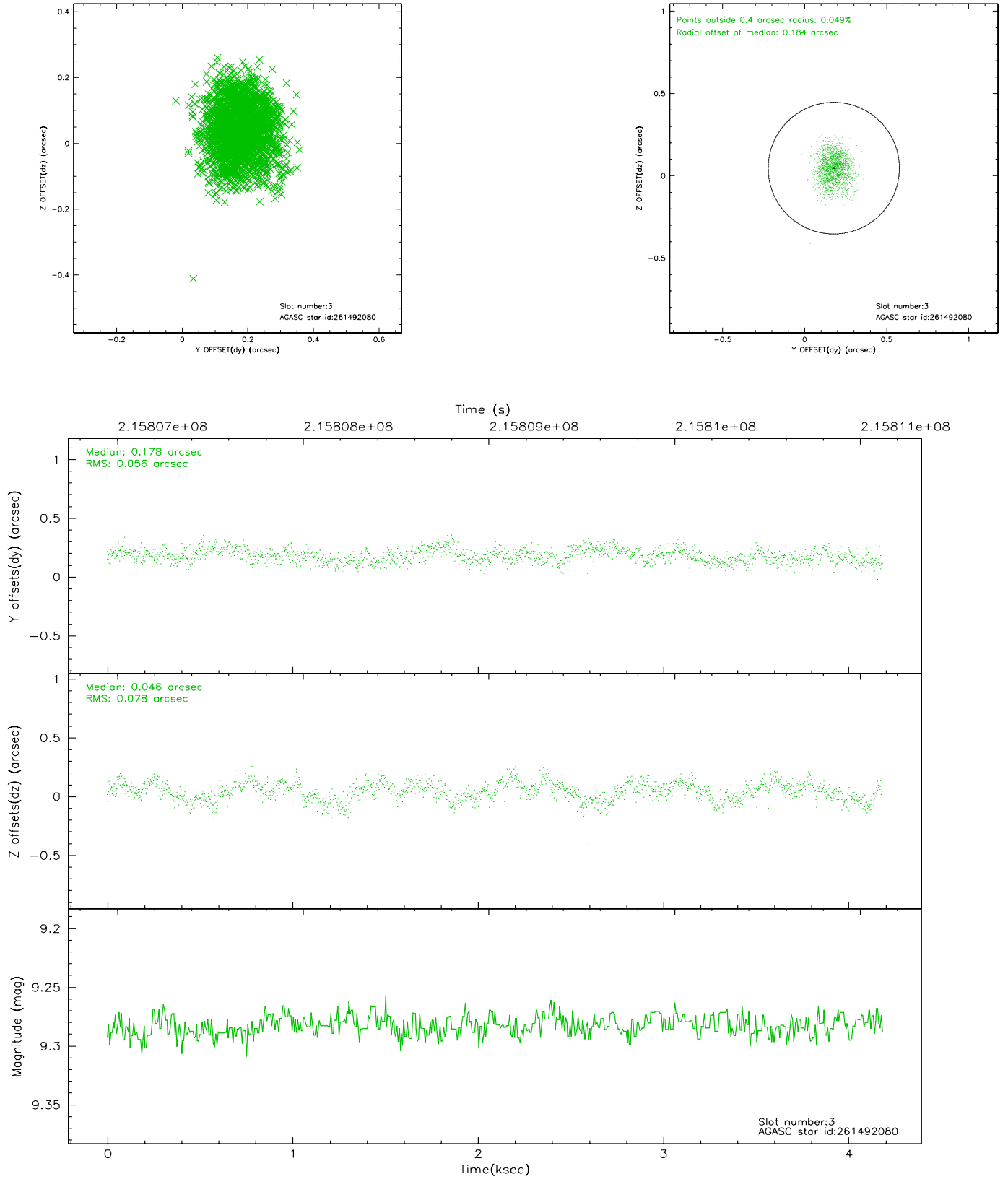


Slot Statistics

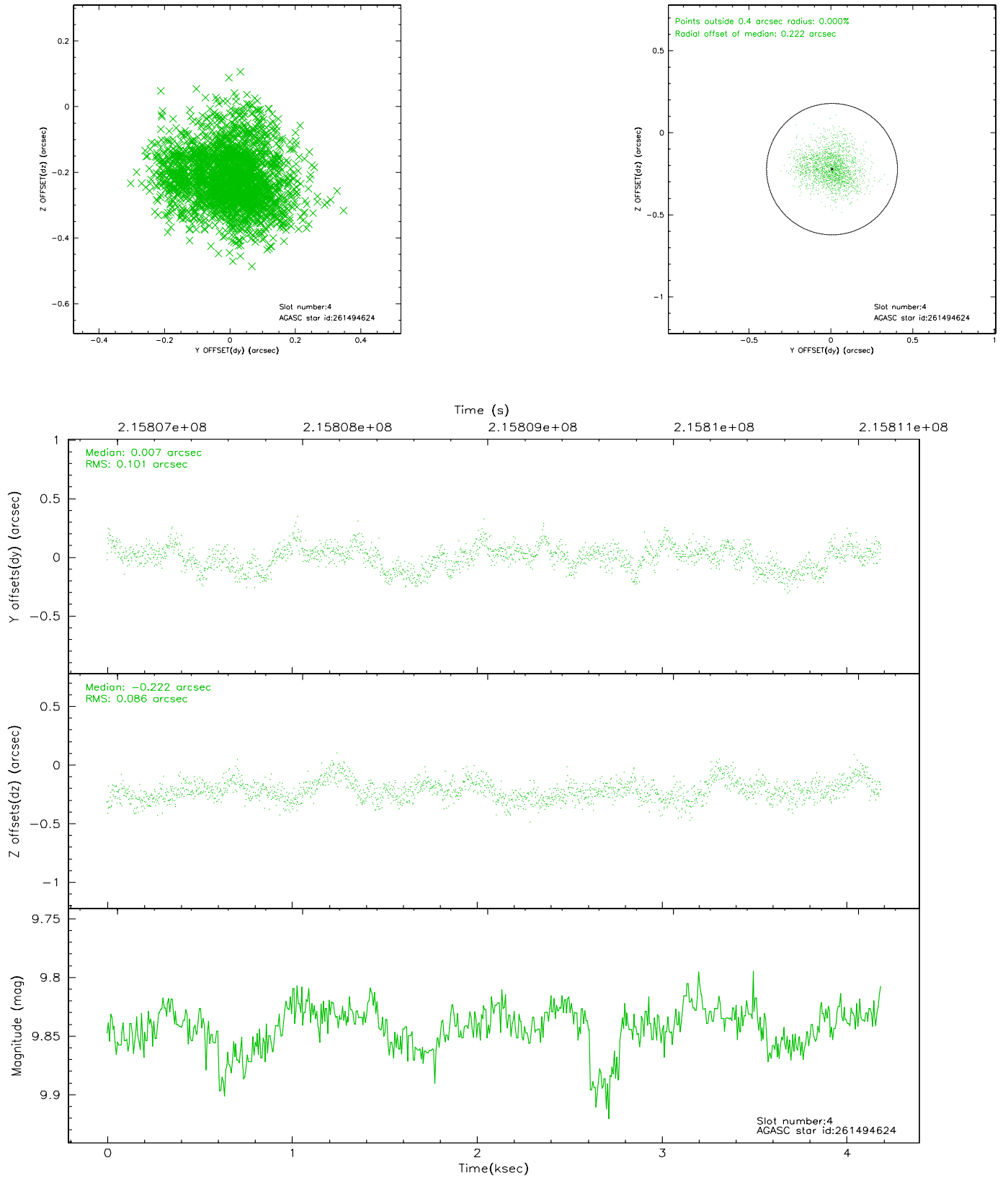
slot	status	id	mag	n_pts	med_dy	med_dz	dr1	dr2	ra	dec	mean_y	mean_z
0	FID	ACIS-S-2	7.10	1021	0.002	-0.004	0.007	0.011	0.000000	0.000000	-760.63	-1733.46
1	FID	ACIS-S-4	7.20	1021	0.033	0.000	0.005	0.008	0.000000	0.000000	2152.00	173.48
2	FID	ACIS-S-5	7.23	1021	-0.066	0.012	0.006	0.010	0.000000	0.000000	-1811.64	168.86
3	GUIDE	261492080	9.28	2043	0.178	0.046	0.101	0.167	194.976344	28.631585	-2198.52	-1488.60
4	GUIDE	261494624	9.84	2043	0.007	-0.222	0.145	0.229	195.359009	29.626023	614.30	1029.37
5	GUIDE	261496832	10.34	2038	-0.152	-0.057	0.154	0.262	194.608189	29.457826	-1727.42	1669.16
6	GUIDE	261497216	9.77	2040	-0.171	0.200	0.127	0.210	195.387564	28.631739	-1069.41	-2128.53
7	GUIDE	261501072	8.99	2041	0.147	0.036	0.110	0.167	195.517851	28.991551	-74.40	-1204.46

2.4 Star Slots

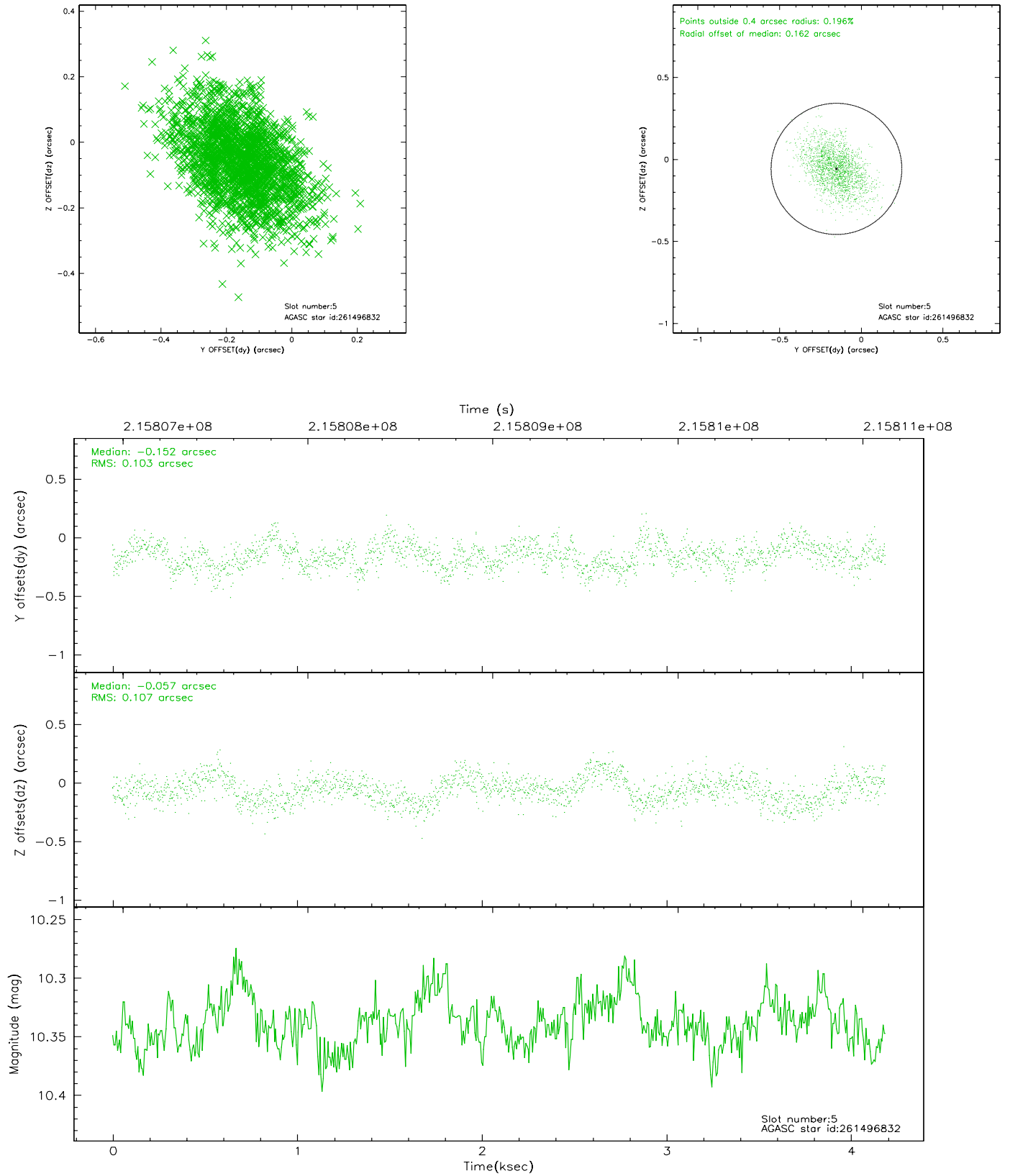
2.4.1 Slot 3



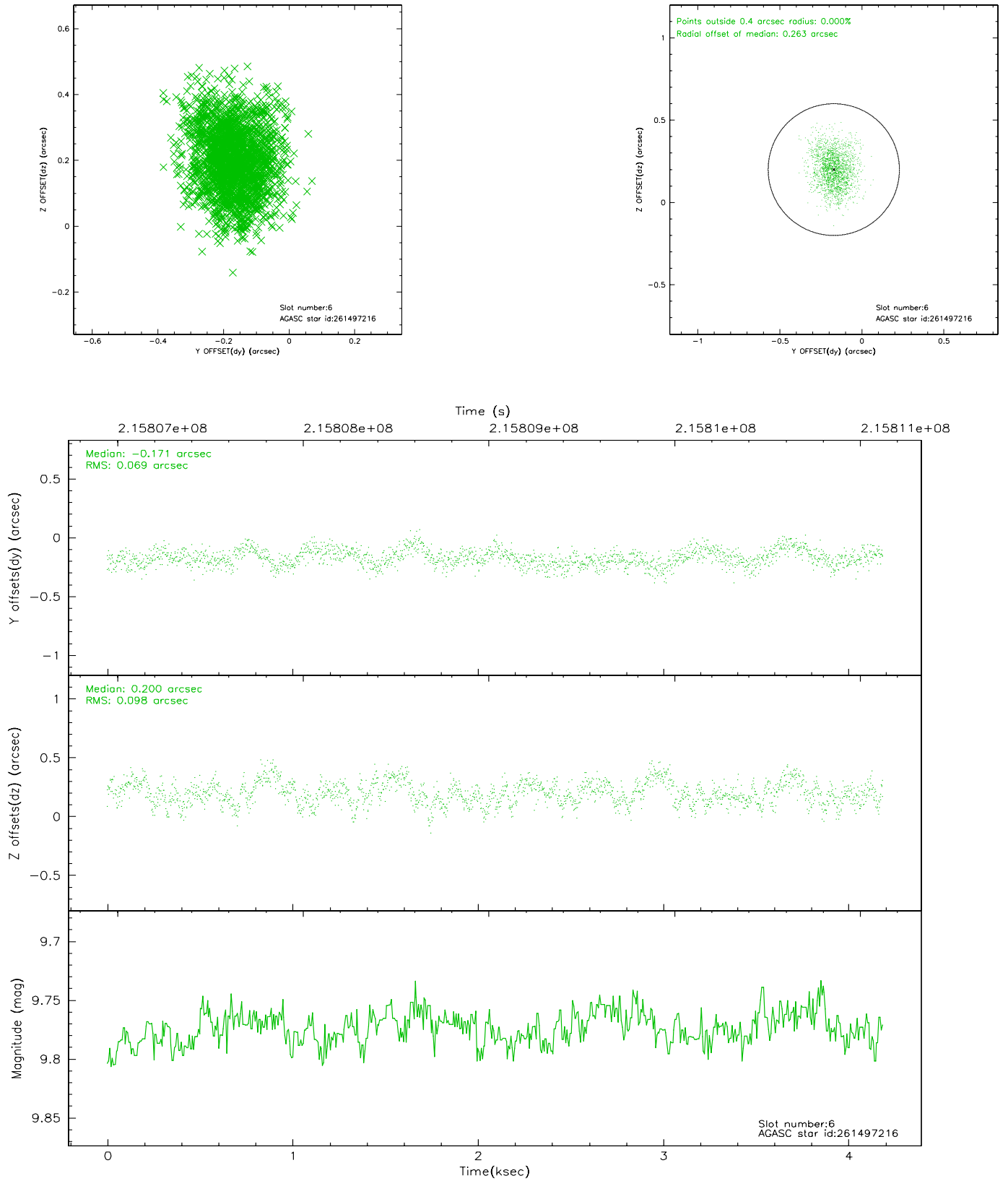
2.4.2 Slot 4



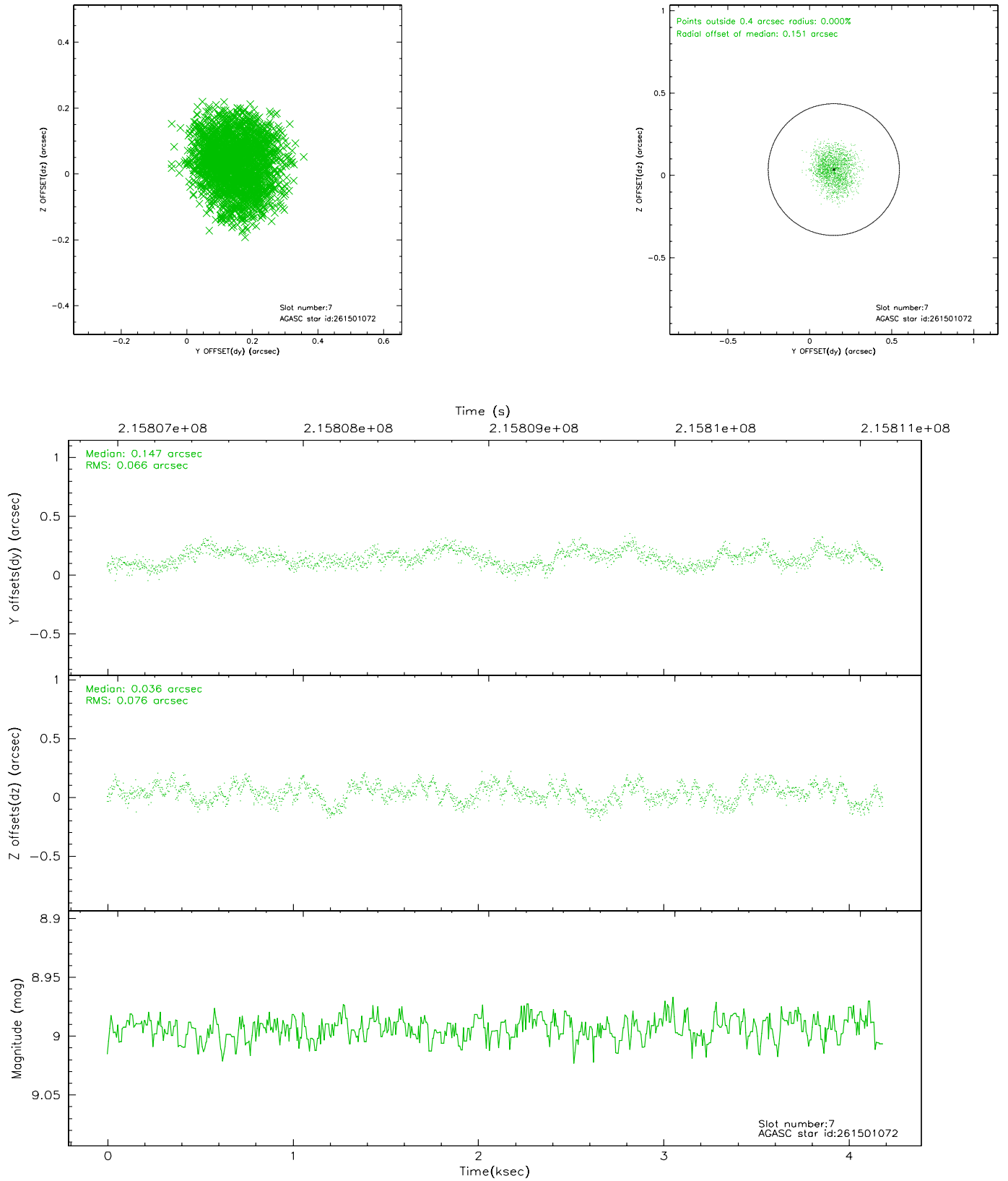
2.4.3 Slot 5



2.4.4 Slot 6

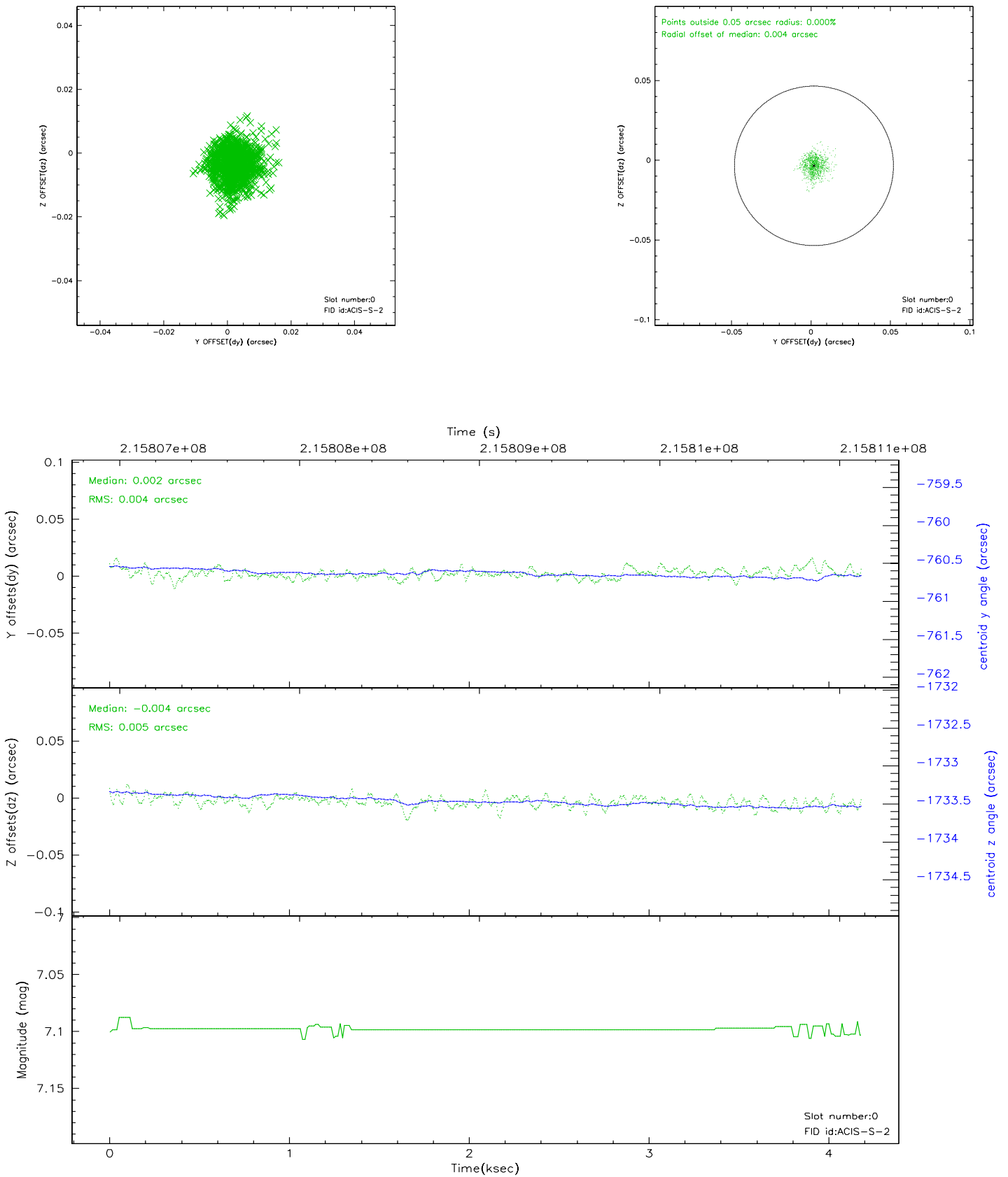


2.4.5 Slot 7

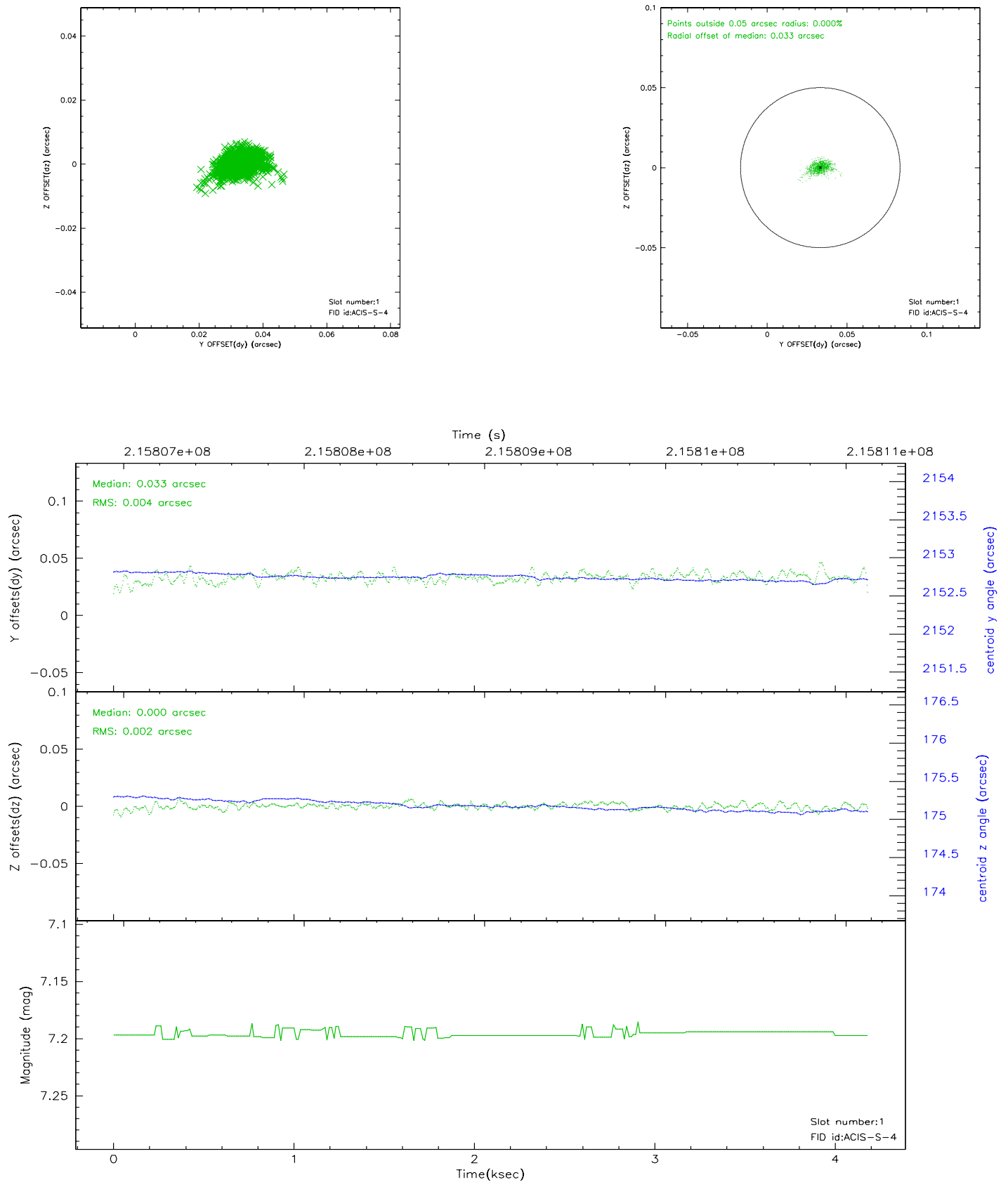


2.5 FID Slots

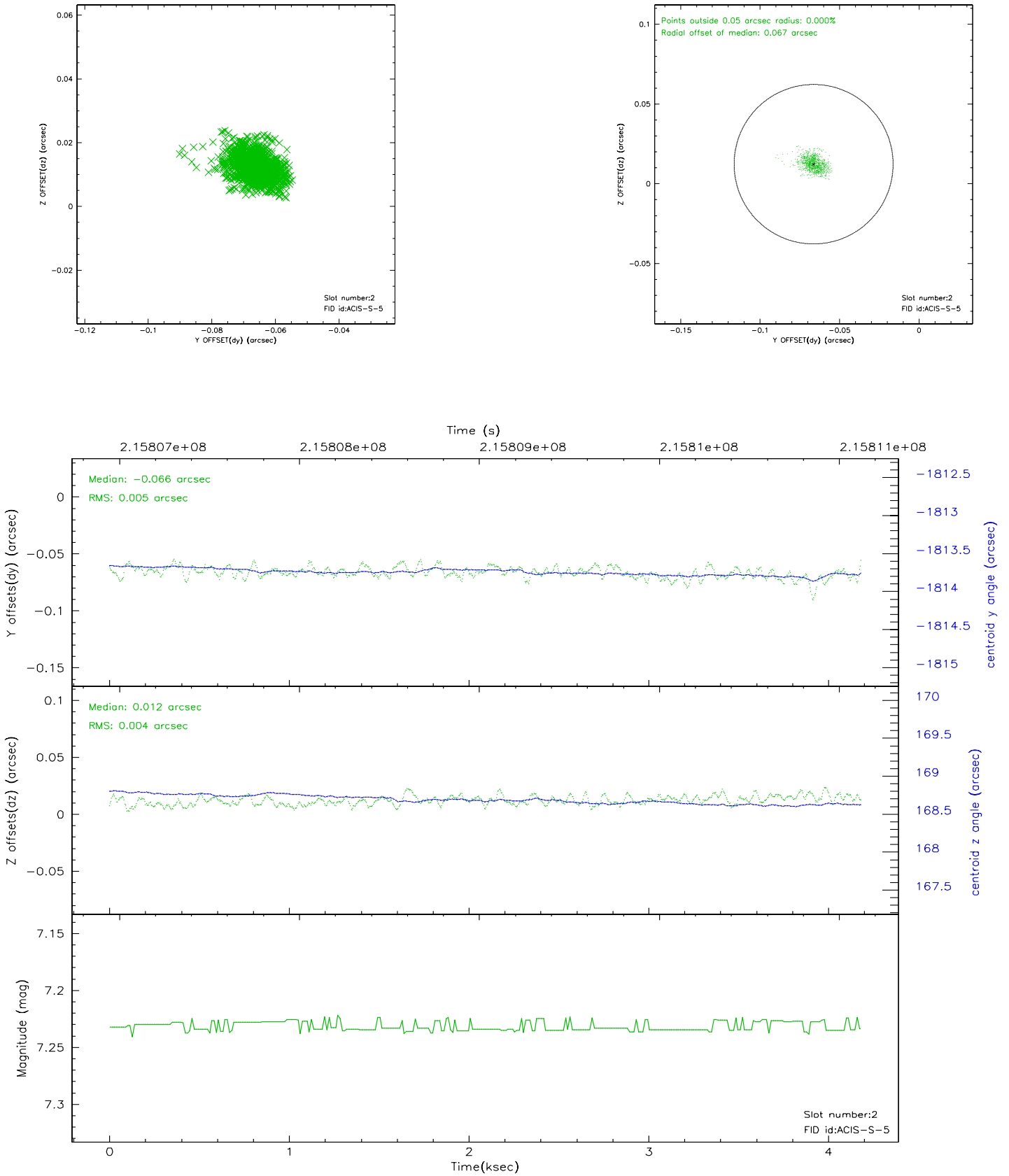
2.5.1 Slot 0



2.5.2 Slot 1



2.5.3 Slot 2



3 Point Sources

A Summary

A.1 Status

V&V Scientist	Beth Sundheim
V&V Date (YYYY-MM-DD)	2006.04.13
V&V Edition	1
V&V Disposition and Status	OK
V&V Charge Time	3.843

A.2 Comments