

V&V Reference Report

L2 ASCDS Version : 7.6.8

Observation 4769 - L2 Version 001
Chandra X-Ray Center

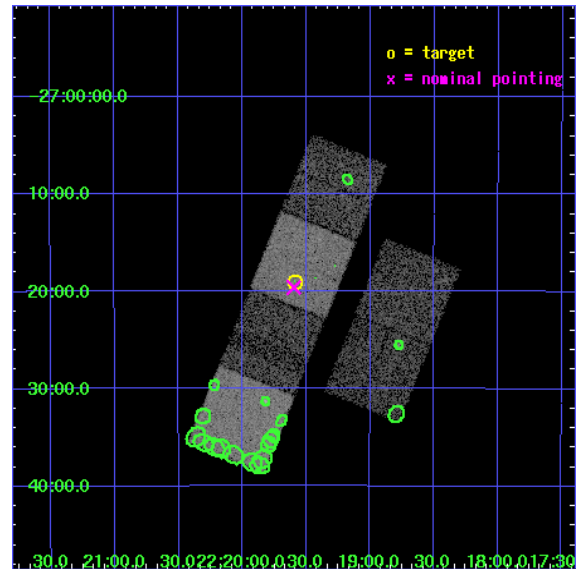
L2 Processing Date : Jun 28 2006

Contents

1	Front	2
2	OBI	3
2.1	OBI	3
2.1.1	Images	3
2.1.2	Bias	3
2.1.3	Parameters	4
2.1.4	Events	4
2.2	Compared Parameters	5
2.3	Aspect	6
2.4	Star Slots	9
2.4.1	Slot 3	9
2.4.2	Slot 4	10
2.4.3	Slot 5	11
2.4.4	Slot 6	12
2.4.5	Slot 7	13
2.5	FID Slots	14
2.5.1	Slot 0	14
2.5.2	Slot 1	15
2.5.3	Slot 2	16
3	Point Sources	17
A	Summary	18
A.1	Status	18
A.2	Comments	18

1 Front

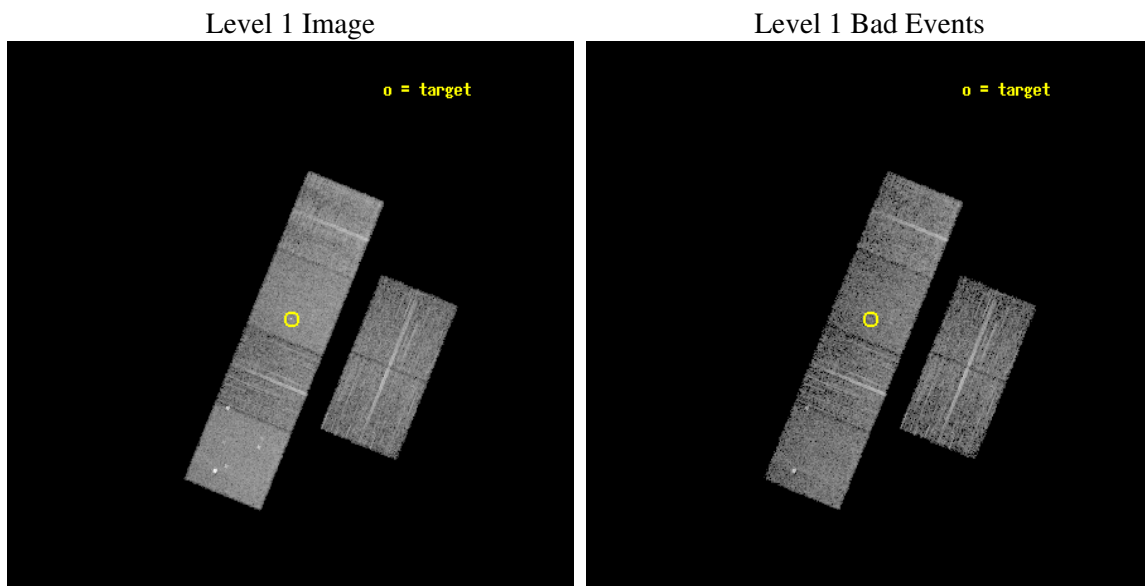
seq_num	700852
obs_id	4769
title	Alternate - A Chandra Survey of Luminous, Radio-Loud Quasars at High Redshift extension
observer	Professor Gordon Garmire
object	PMN J2219-2719
dtcycle	0
cycle	P
ra_targ	334.897083
dec_targ	-27.317417
ra_nom	334.89933855224
dec_nom	-27.326821703406
roll_nom	292.11922982125
revision	2
ontime	8153.5999696255
livetime	8050.3541773016
ontime2	8153.5999696255
ontime3	8153.5999696255
ontime5	8153.5999696255
ontime6	8153.5999696255
ontime7	8153.5999696255
ontime8	8150.3591189086
l2events	75596



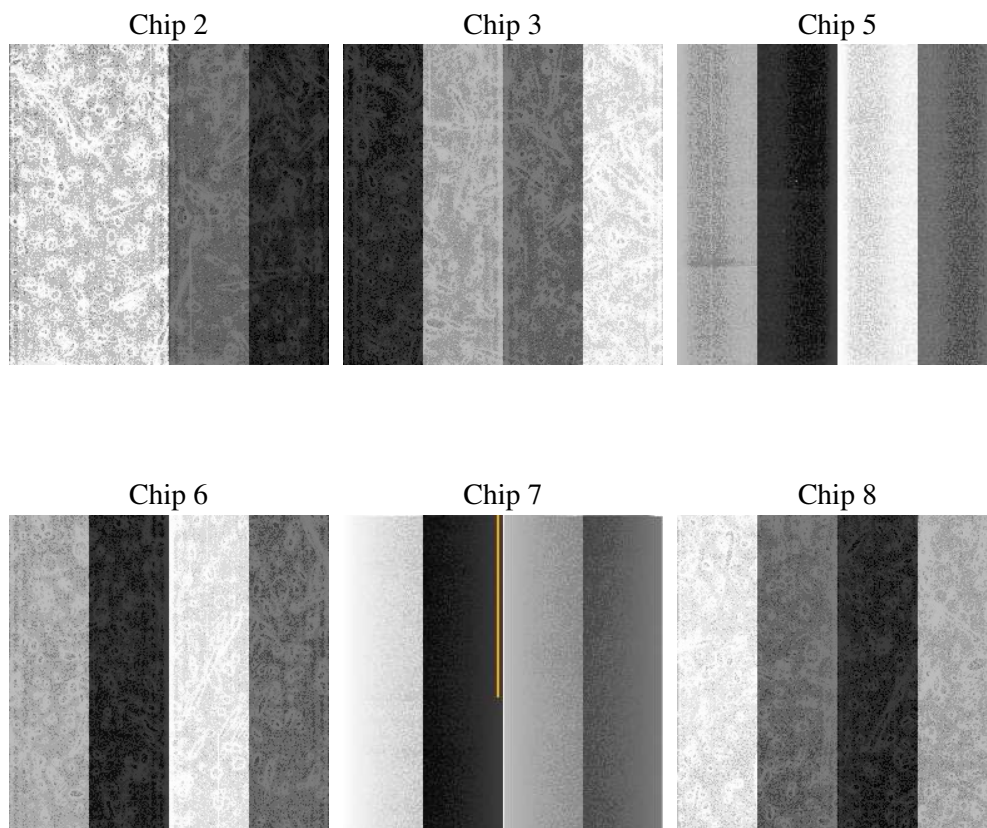
2 OBI

2.1 OBI

2.1.1 Images



2.1.2 Bias



2.1.3 Parameters

obi_num	0
ascdsver	7.6.8
caldbver	3.2.2
date	2006-06-28T04:33:26
revision	2

sched_exp_time	8400.000000
ontime	8157.6005533636
ontime2	8157.6005533636
ontime3	8160.8415634334
ontime5	8160.8415634334
ontime6	8160.8415435255
ontime7	8157.6005533636
ontime8	8157.6005931497
l1events	321661

2.1.4 Events

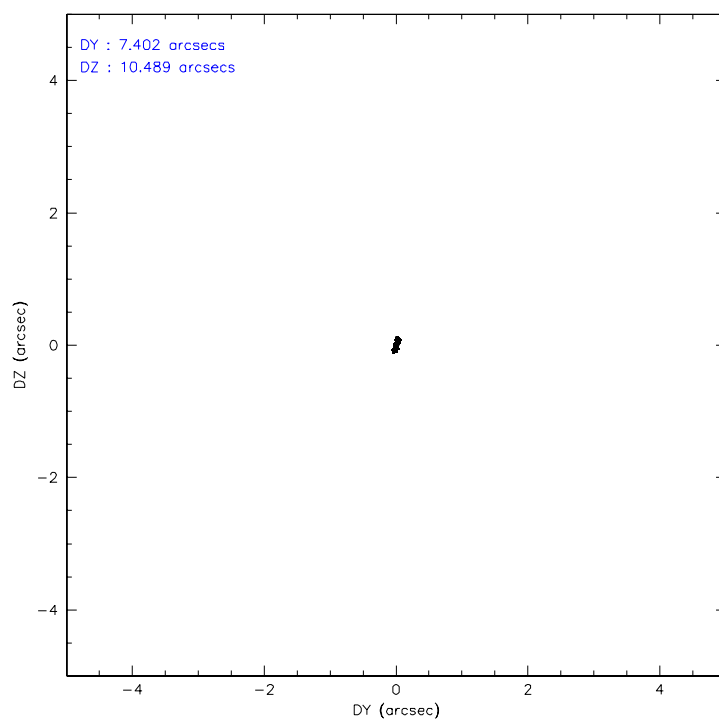
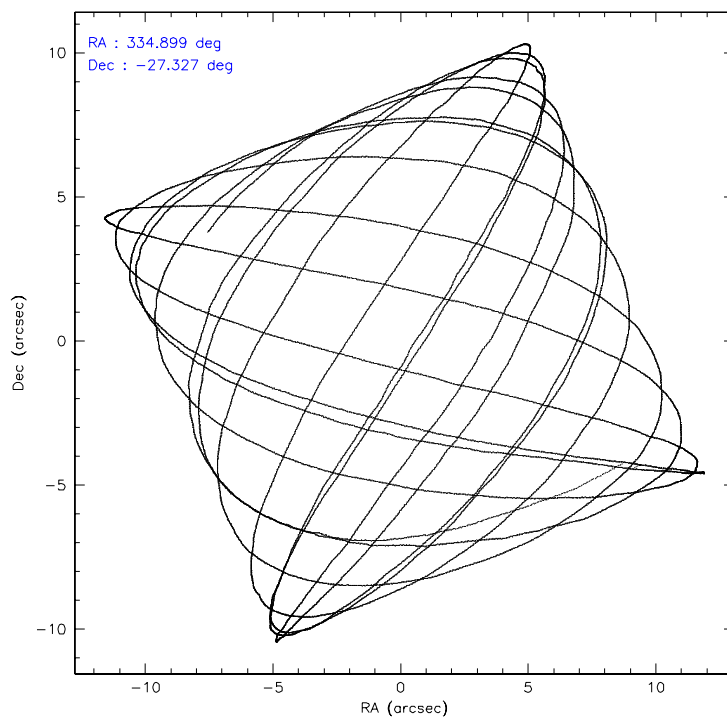
	ccd 2	ccd 3	ccd 5	ccd 6	ccd 7	ccd 8
level 1 events	45111	42505	67232	44586	59584	62643
rejected events	38340	35731	37024	37669	35771	44884
rejected %	84%	84%	55%	84%	60%	71%

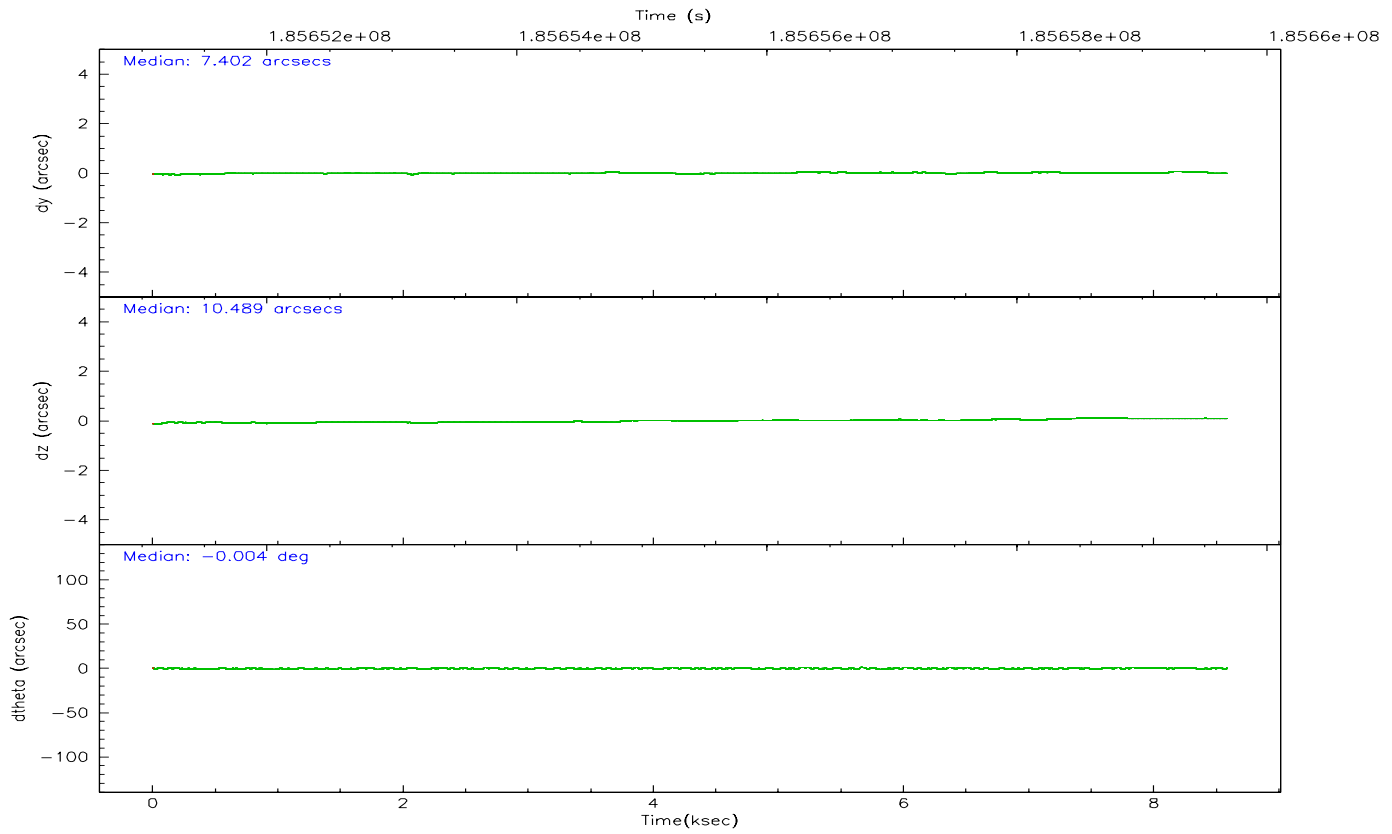
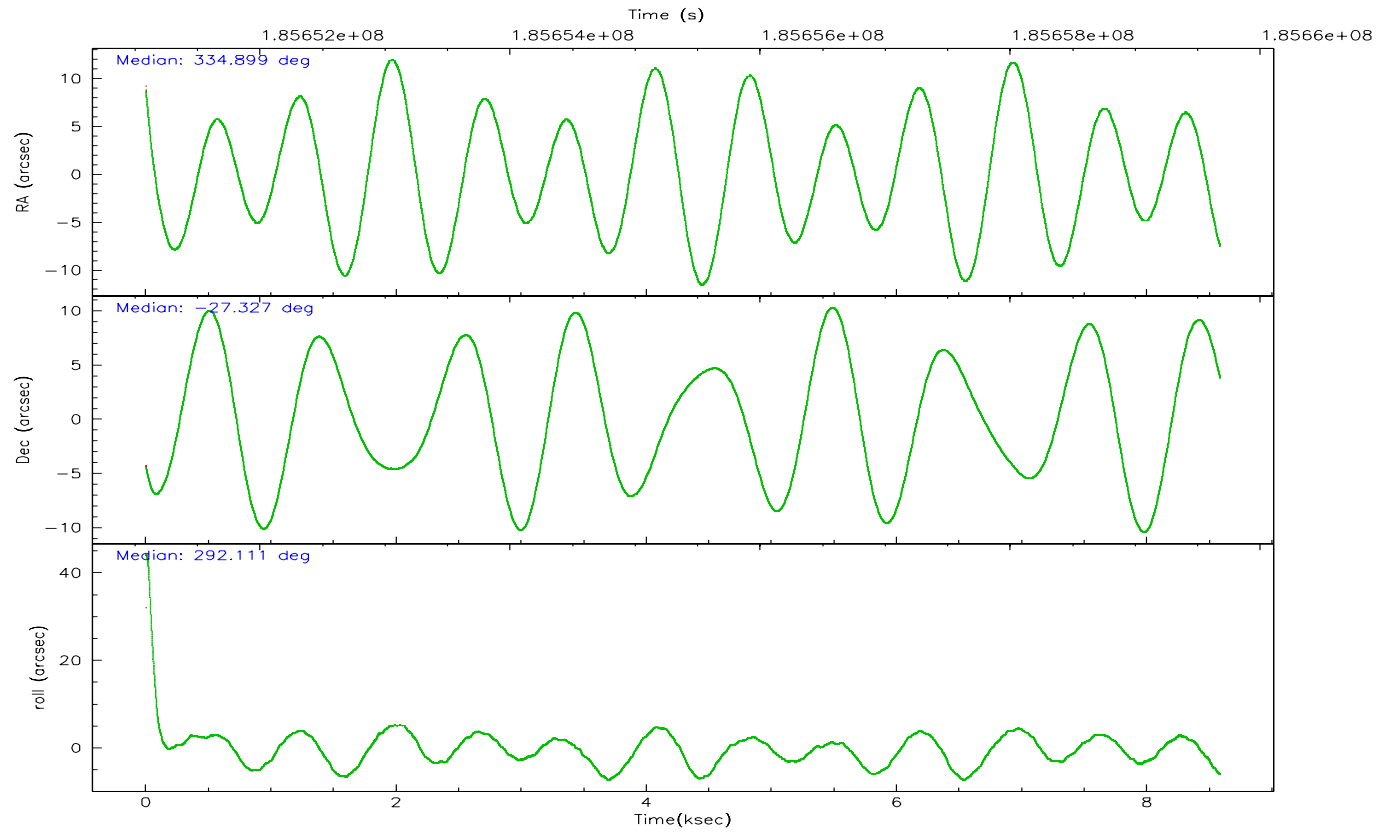
	ccd 2	ccd 3	ccd 5	ccd 6	ccd 7	ccd 8
grade 0 events	3095	2993	2592	2806	1663	6475
	6%	7%	3%	6%	2%	10%
grade 1 events	33	22	162	28	36	58
	0%	0%	0%	0%	0%	0%
grade 2 events	1459	1525	9732	1701	5889	3251
	3%	3%	14%	3%	9%	5%
grade 3 events	519	576	773	553	1267	2345
	1%	1%	1%	1%	2%	3%
grade 4 events	517	501	784	513	1220	2155
	1%	1%	1%	1%	2%	3%
grade 5 events	1747	1878	3350	1934	4012	2512
	3%	4%	4%	4%	6%	4%
grade 6 events	1181	1186	16353	1348	13780	3562
	2%	2%	24%	3%	23%	5%
grade 7 events	36560	33824	33486	35703	31717	42285
	81%	79%	49%	80%	53%	67%

2.2 Compared Parameters

Parameter	Planned	Actual	Parameter	Planned	Actual
Instrument	ACIS	ACIS	Obspar format version number	6	6
Detector	ACIS-235678	ACIS-235678	Obspar file type	PREDICTED	ACTUAL
Grating	NONE	NONE	Obspar update status	NONE	UPDATED
Data mode	FAINT	FAINT	On-chip summing requested	N	N
Observation mode	POINTING	POINTING	Subarray requested	NONE	NONE
Pointing RA	334.874902	334.899338552243	Alternating exposures requested	N	N
Pointing Dec	-27.310449	-27.32682170340644	Primary exposure time	0.000000	3.2
Pointing Roll	291.951326	292.1192298212469			
SIM focus pos (mm)	-0.684267	-0.6828225247311905			
SIM defocus (mm)	0	0.001444936568705701			
SIM translation stage pos (mm)	-190.132523	-190.1400660498719			
SIM translation stage offset (mm)	0	0.00754346686406393			
Observation start time	185651275.184000	185650728.87695			
Observation start date	2003-11-19T17:46:51	2003-11-19T17:38:48			
Observation end time	185659675.184000	185660479.70237			
Observation end date	2003-11-19T20:06:51	2003-11-19T20:21:19			
Read mode	TIMED	TIMED			

2.3 Aspect



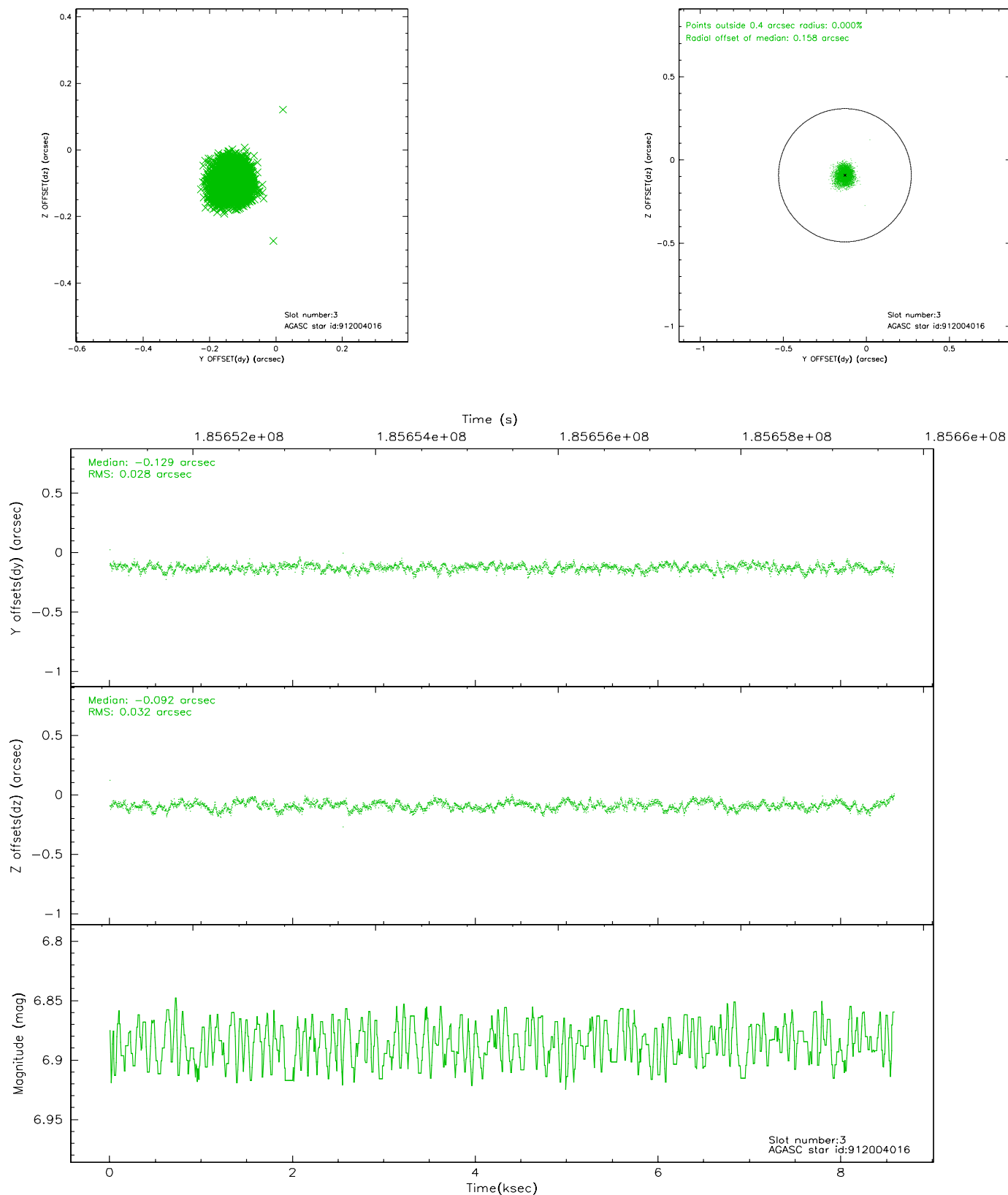


Slot Statistics

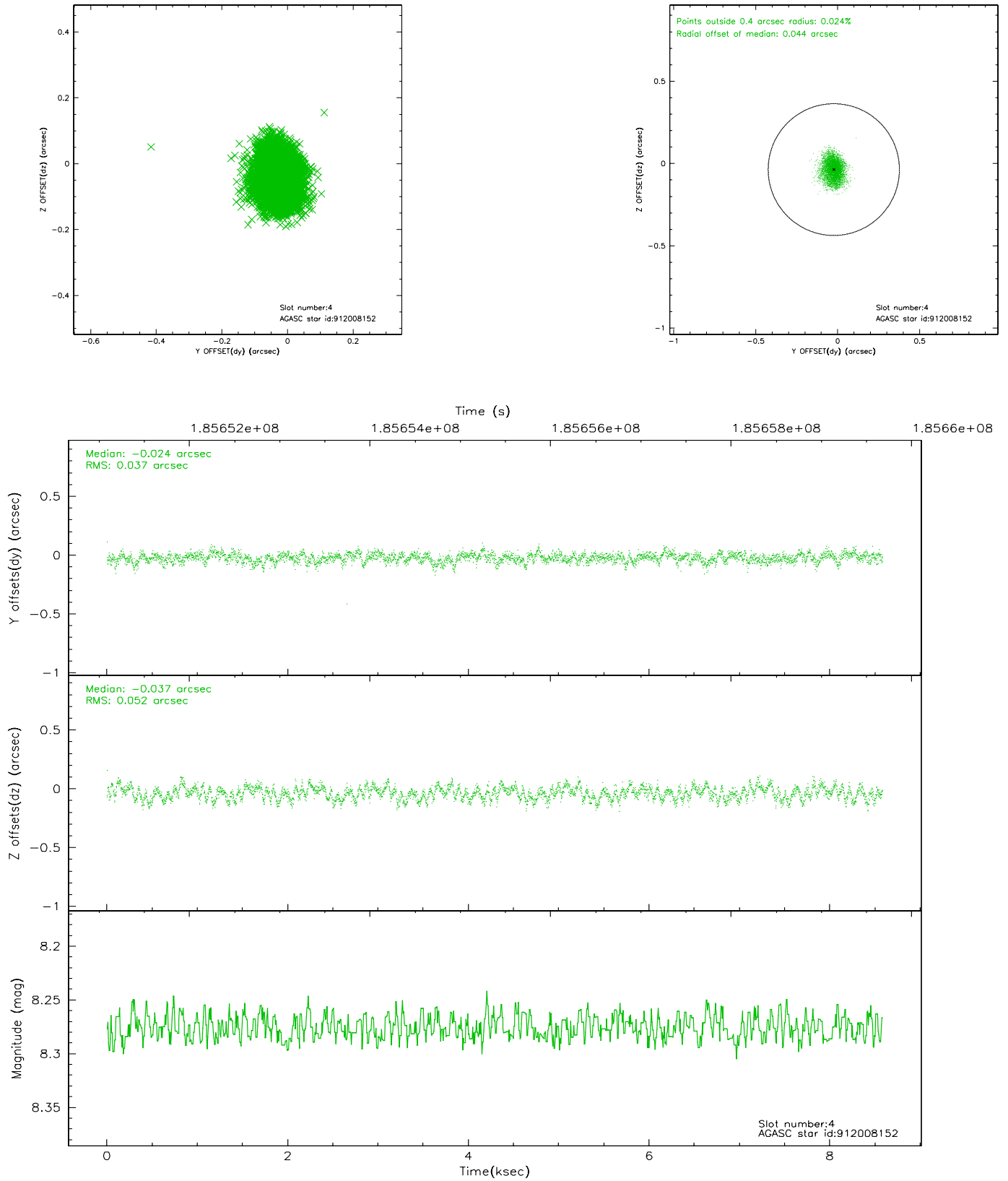
slot	status	id	mag	n_pts	med_dy	med_dz	dr1	dr2	ra	dec	mean_y	mean_z
0	FID	ACIS-S-1	7.18	2094	0.010	-0.033	0.008	0.013	0.000000	0.000000	935.85	-1727.42
1	FID	ACIS-S-2	7.10	2094	-0.036	0.005	0.006	0.010	0.000000	0.000000	-759.74	-1732.57
2	FID	ACIS-S-4	7.20	2094	0.000	0.034	0.005	0.009	0.000000	0.000000	2152.82	176.12
3	GUIDE	912004016	6.89	4188	-0.129	-0.092	0.045	0.073	334.322948	-27.389925	-389.67	-1744.84
4	GUIDE	912008152	8.28	4185	-0.024	-0.037	0.069	0.110	334.601001	-27.294801	-378.49	-792.54
5	GUIDE	912927016	7.65	4187	-0.053	-0.150	0.053	0.085	334.950017	-27.388764	351.59	116.99
6	GUIDE	913311128	9.32	4185	0.131	0.312	0.084	0.136	335.712239	-27.584864	1923.90	2106.05
7	GUIDE	913310352	9.61	4187	0.080	-0.031	0.112	0.182	335.178898	-27.920777	2401.51	76.01

2.4 Star Slots

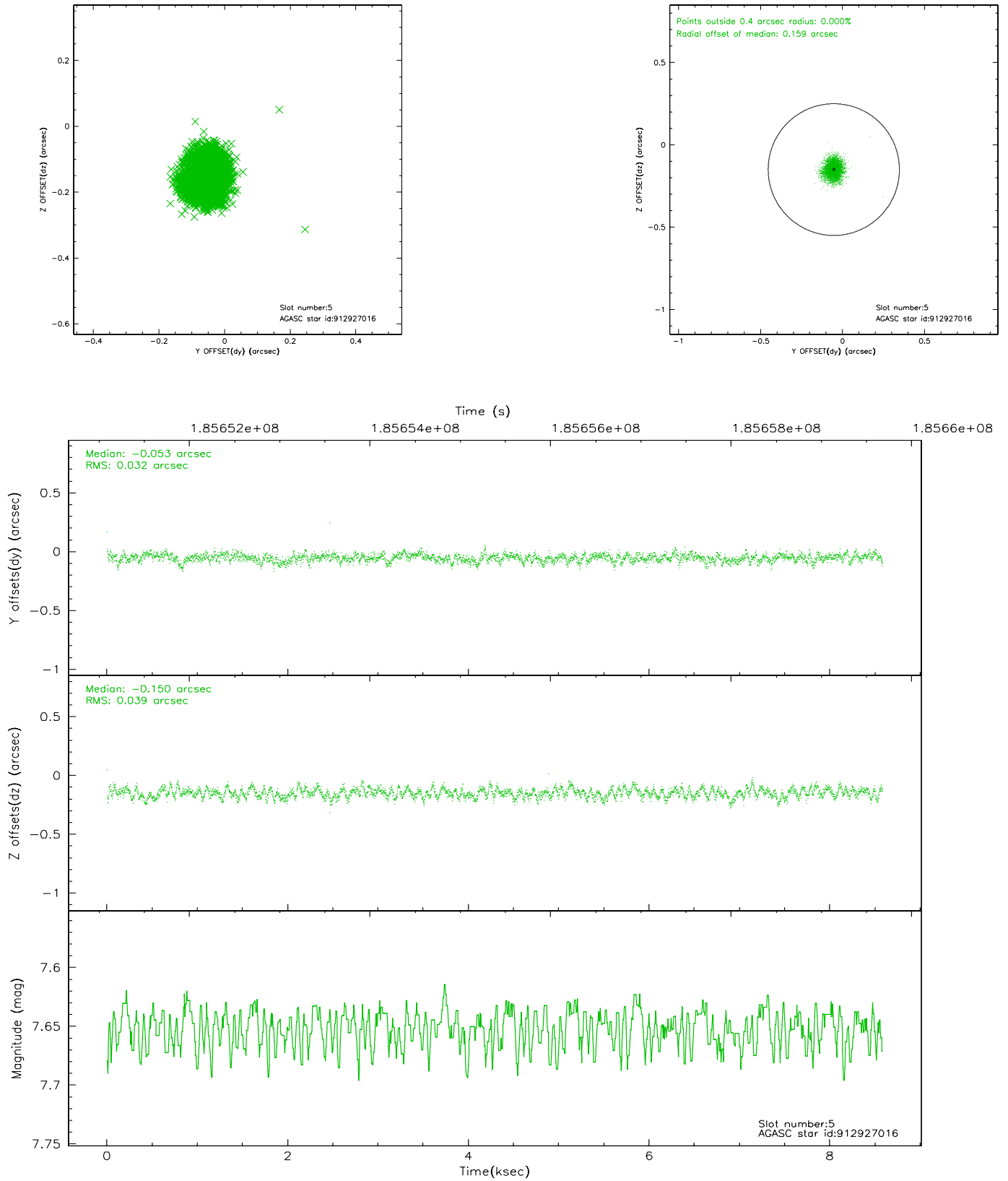
2.4.1 Slot 3



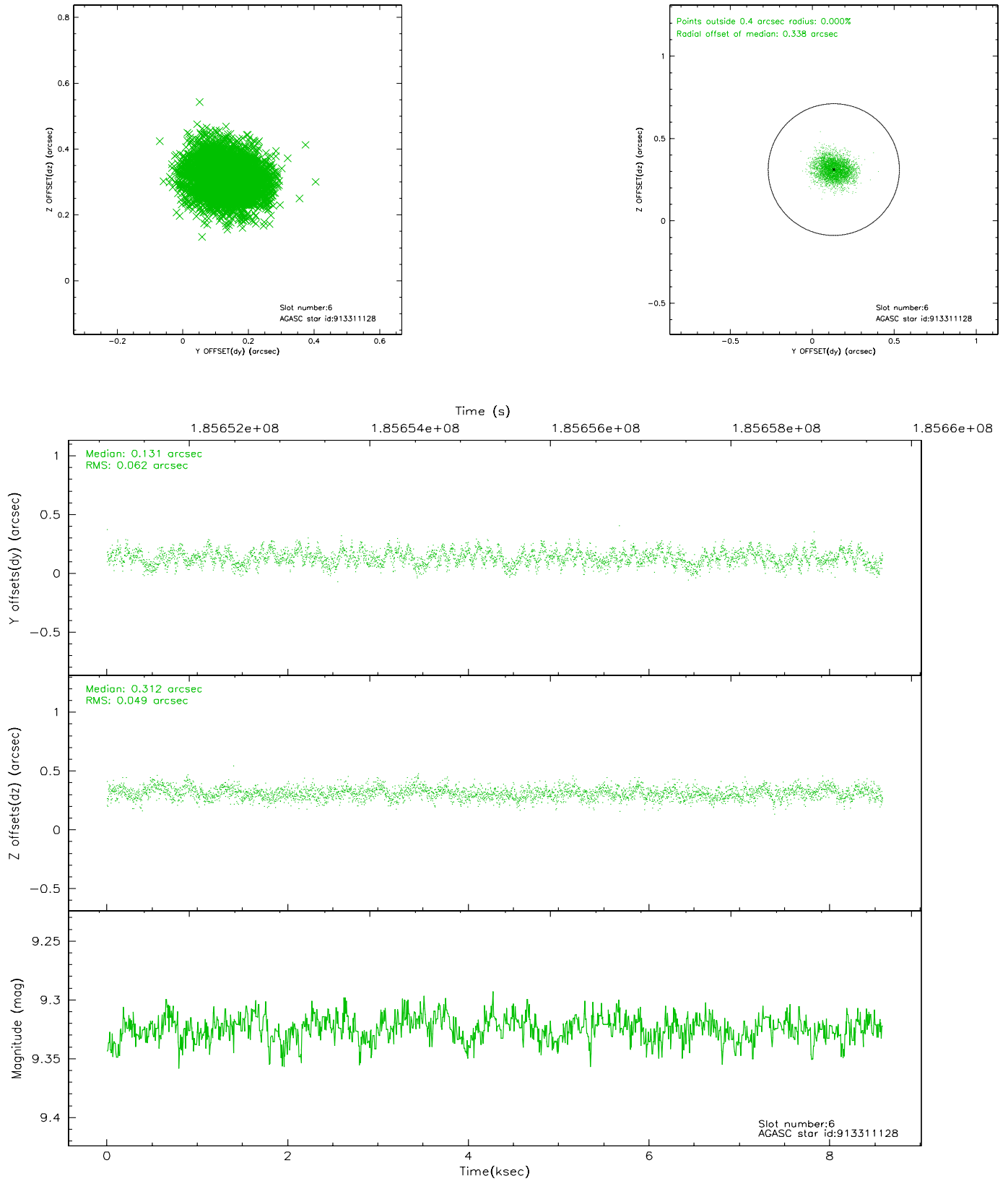
2.4.2 Slot 4



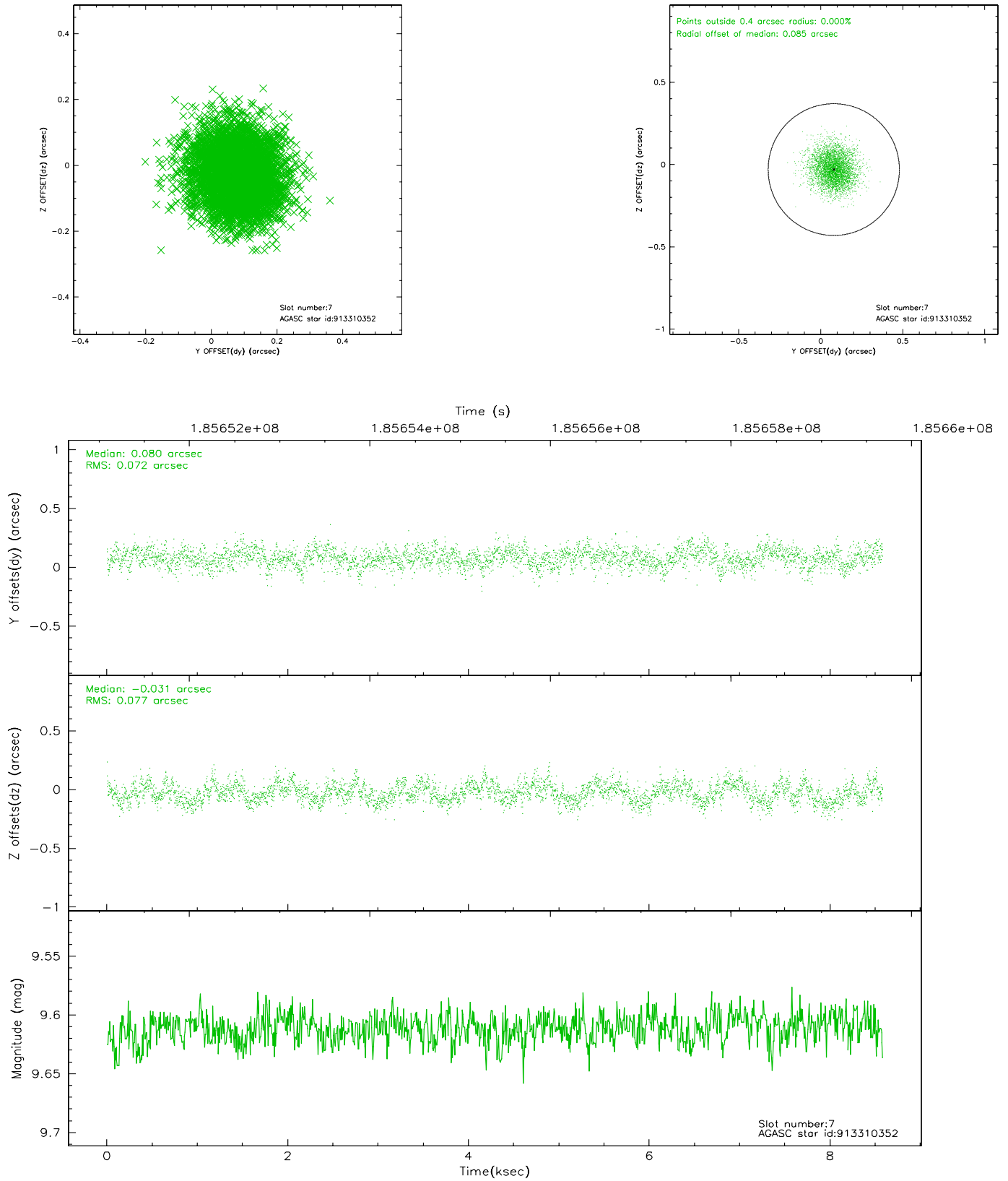
2.4.3 Slot 5



2.4.4 Slot 6

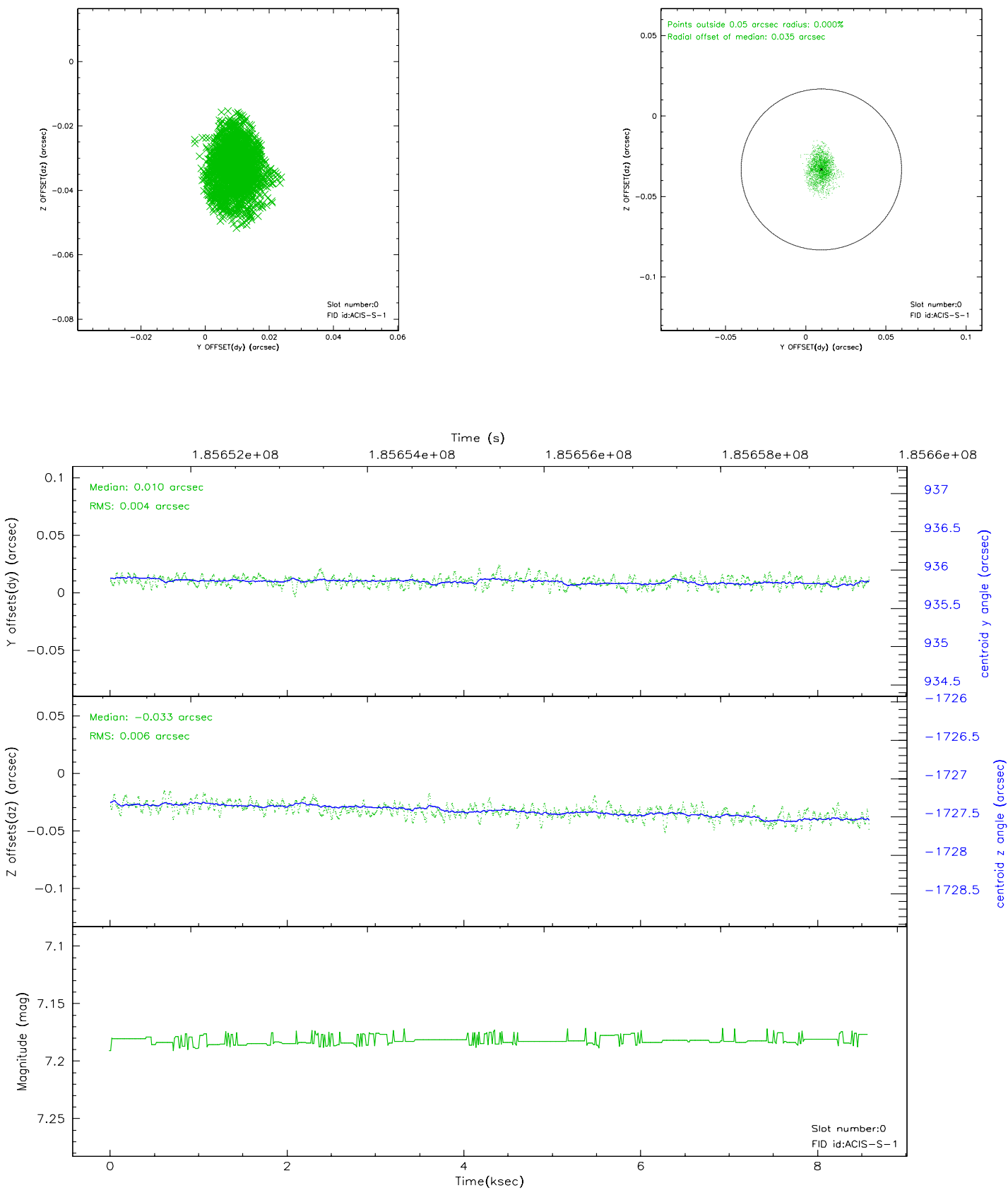


2.4.5 Slot 7

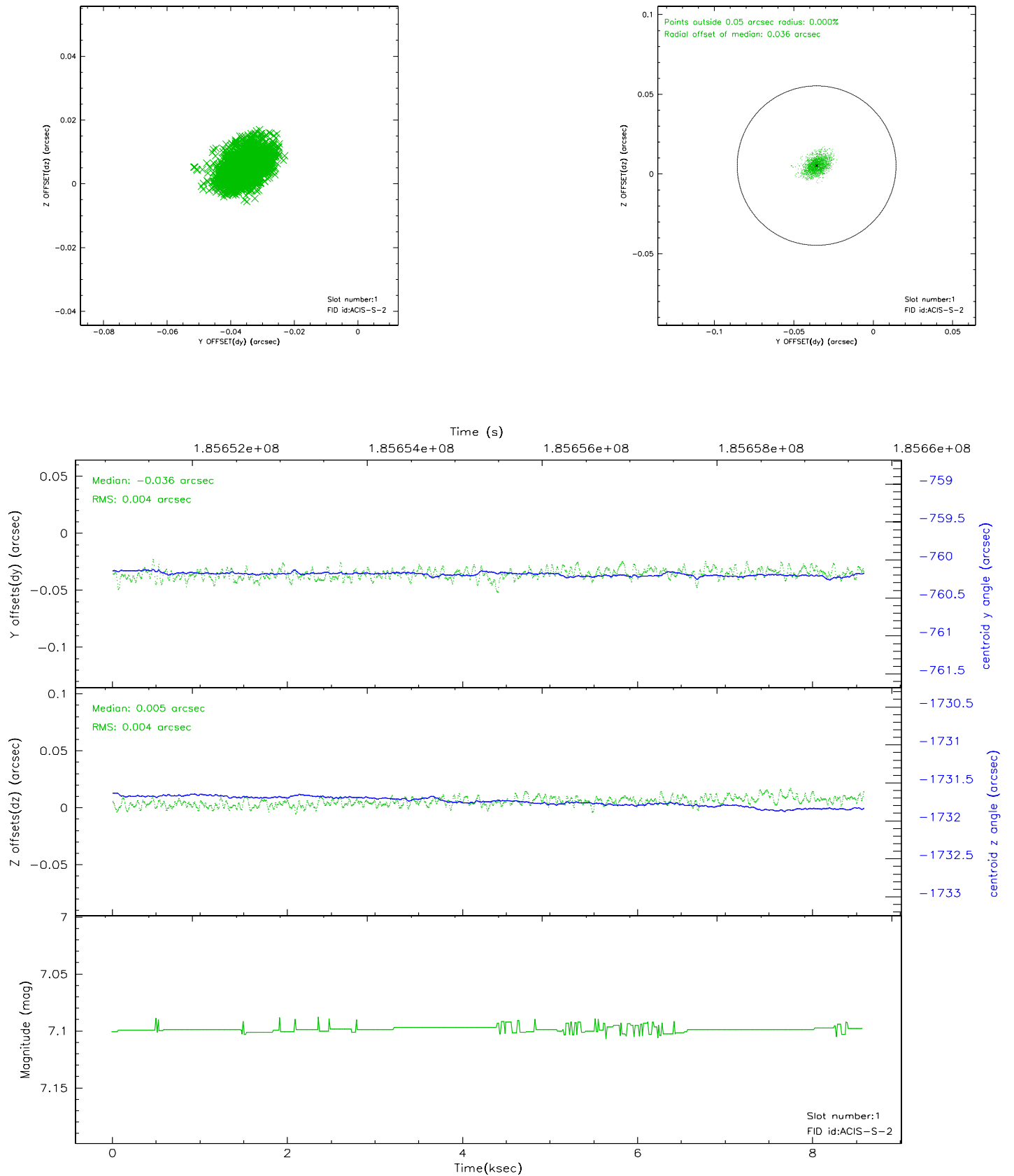


2.5 FID Slots

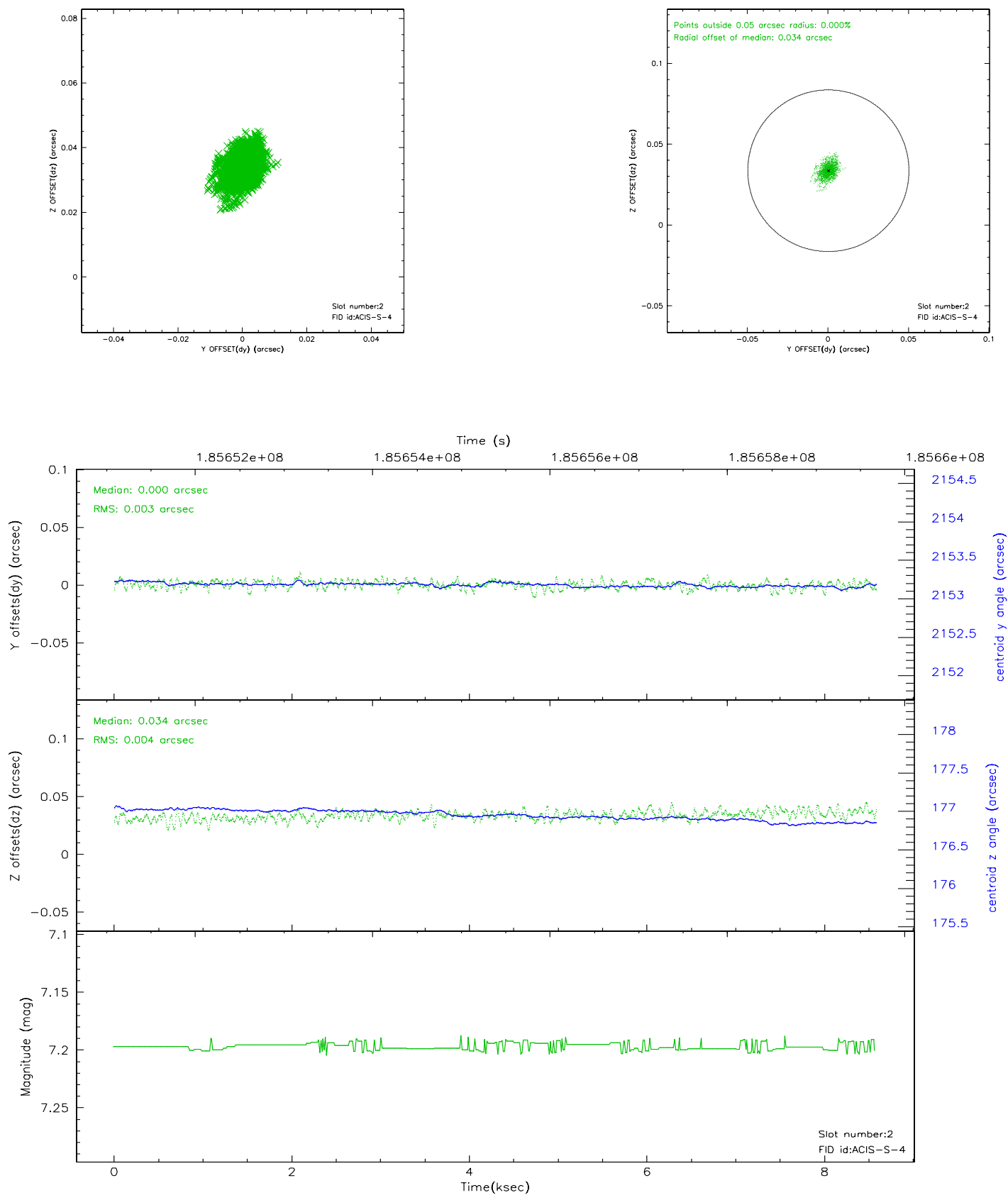
2.5.1 Slot 0



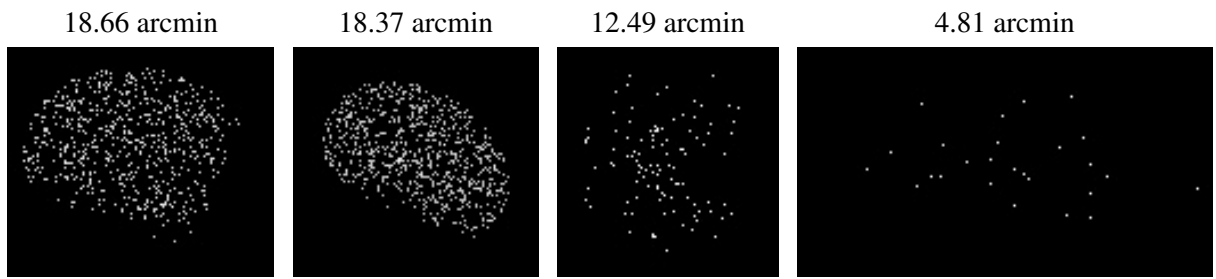
2.5.2 Slot 1



2.5.3 Slot 2



3 Point Sources



A Summary

A.1 Status

V&V Scientist	Beth Sundheim
V&V Date (YYYY-MM-DD)	2006.06.28
V&V Edition	1
V&V Disposition and Status	OK
V&V Charge Time	8.153

A.2 Comments