

V&V Reference Report

L2 ASCDS Version : 7.6.7.2

Observation 4768 - L2 Version 001
Chandra X-Ray Center

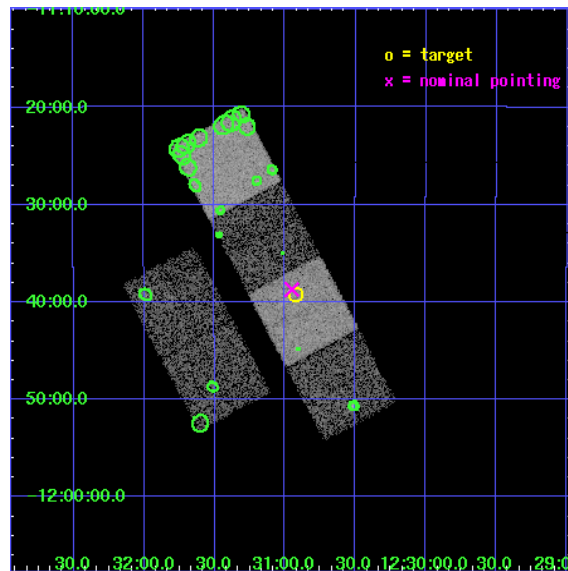
L2 Processing Date : Jun 4 2006

Contents

1	Front	2
2	OBI	3
2.1	OBI	3
2.1.1	Images	3
2.1.2	Bias	3
2.1.3	Parameters	4
2.1.4	Events	4
2.2	Compared Parameters	5
2.3	Aspect	6
2.4	Star Slots	9
2.4.1	Slot 3	9
2.4.2	Slot 4	10
2.4.3	Slot 5	11
2.4.4	Slot 6	12
2.4.5	Slot 7	13
2.5	FID Slots	14
2.5.1	Slot 0	14
2.5.2	Slot 1	15
2.5.3	Slot 2	16
3	Point Sources	17
A	Summary	18
A.1	Status	18
A.2	Comments	18

1 Front

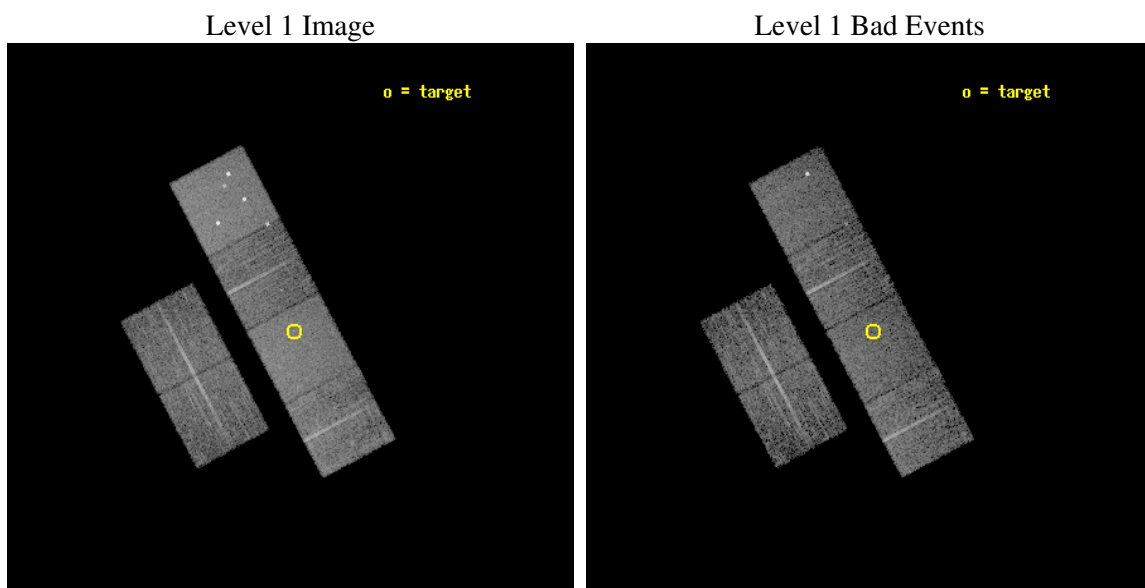
seq_num	700851
obs_id	4768
title	Alternate - A Chandra Survey of Luminous, Radio-Loud Quasars at High Redshift extension
observer	Professor Gordon Garmire
object	PMN J1230-1139
dtcycle	0
cycle	P
ra_targ	187.731667
dec_targ	-11.65275
ra_nom	187.73772228837
dec_nom	-11.64524097582
roll_nom	62.078476868322
revision	2
ontime	7606.399971664
livetime	7510.0831551985
ontime2	7606.399971664
ontime3	7606.399971664
ontime5	7606.399971664
ontime6	7606.399971664
ontime7	7606.399971664
ontime8	7606.399971664
l2events	72185



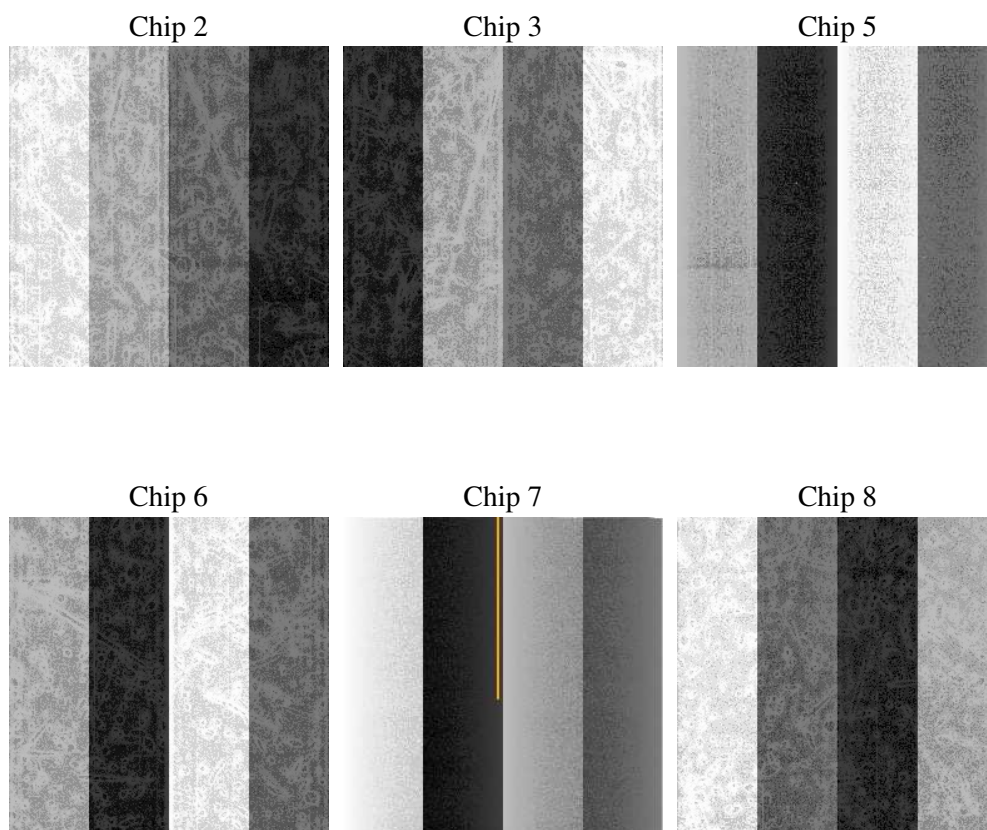
2 OBI

2.1 OBI

2.1.1 Images



2.1.2 Bias



2.1.3 Parameters

obi_num	0
ascdsver	7.6.7.2
caldbver	3.2.2
date	2006-06-04T05:49:38
revision	2

sched_exp_time	7426.872000
ontime	8621.0813868642
ontime2	8494.6831265092
ontime3	8559.5028113127
ontime5	8621.0813868642
ontime6	8562.7437218726
ontime7	8621.0813868642
ontime8	8578.9485736489
l1events	476526

2.1.4 Events

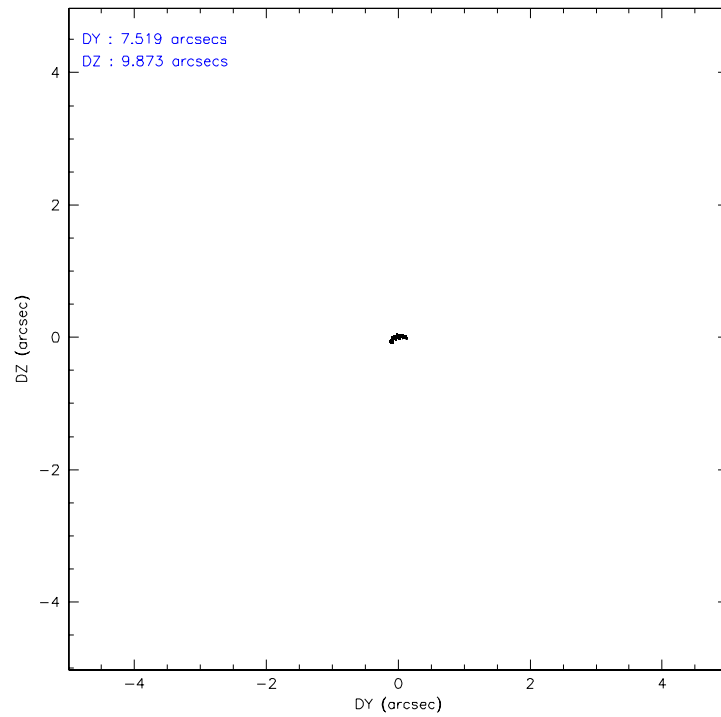
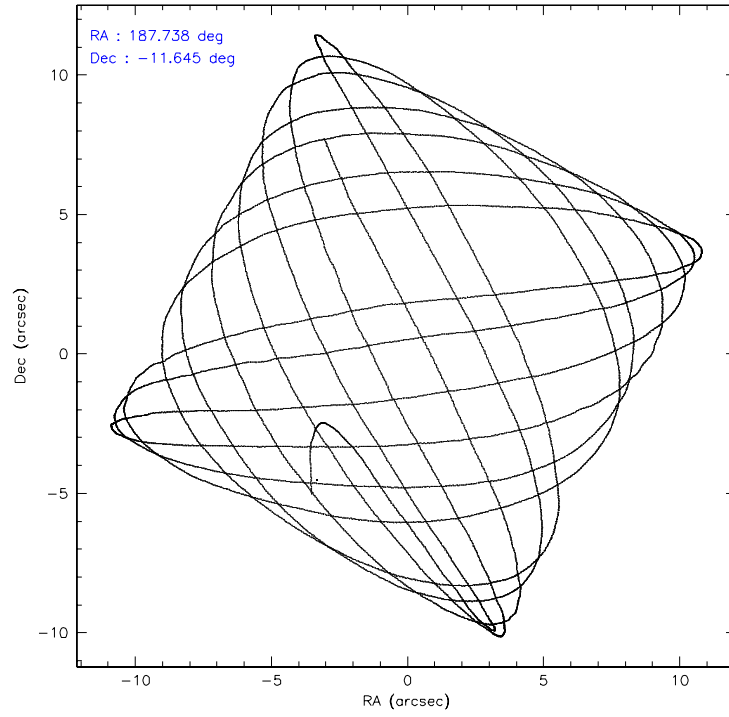
	ccd 2	ccd 3	ccd 5	ccd 6	ccd 7	ccd 8
level 1 events	67175	67106	101189	69645	89338	82073
rejected events	61510	61850	66396	63933	65399	70490
rejected %	91%	92%	65%	91%	73%	85%

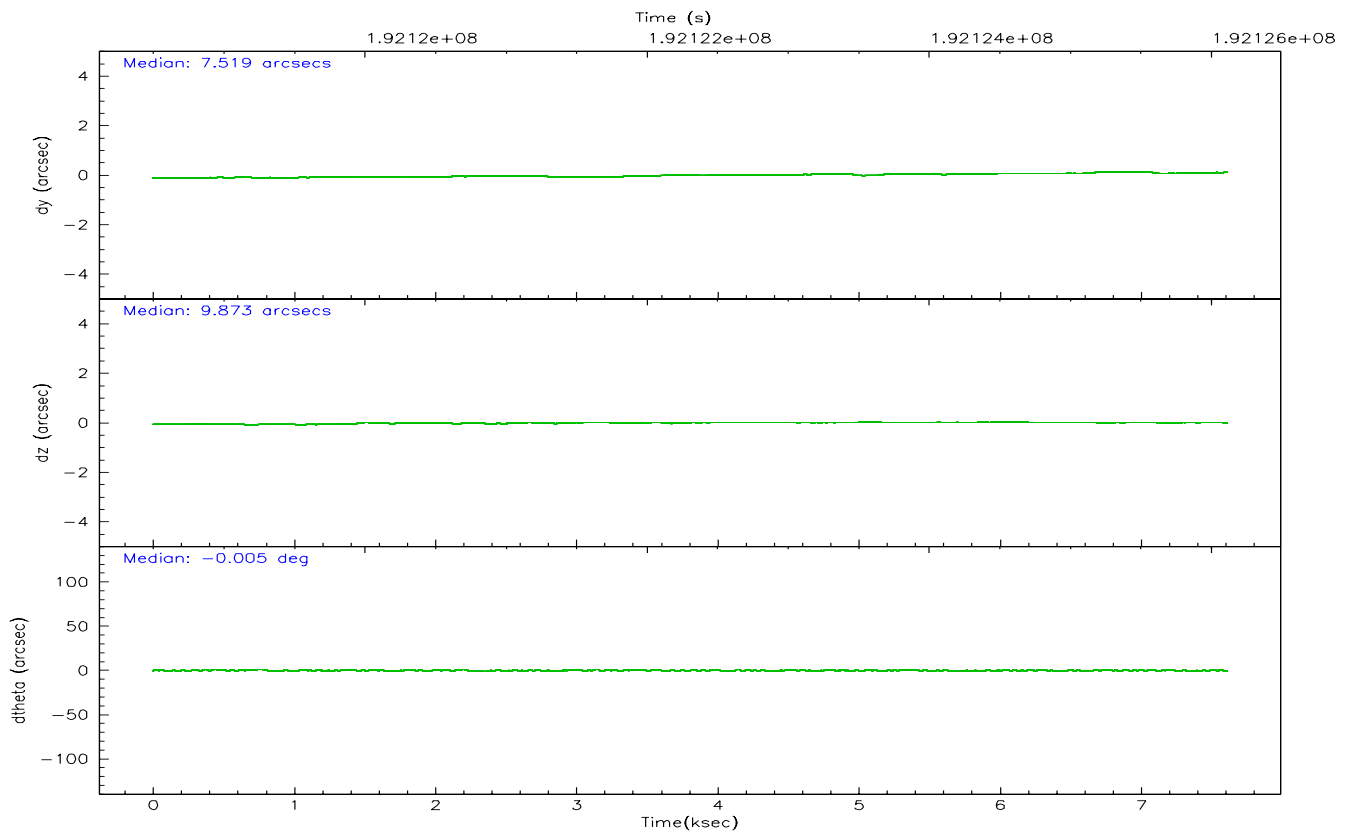
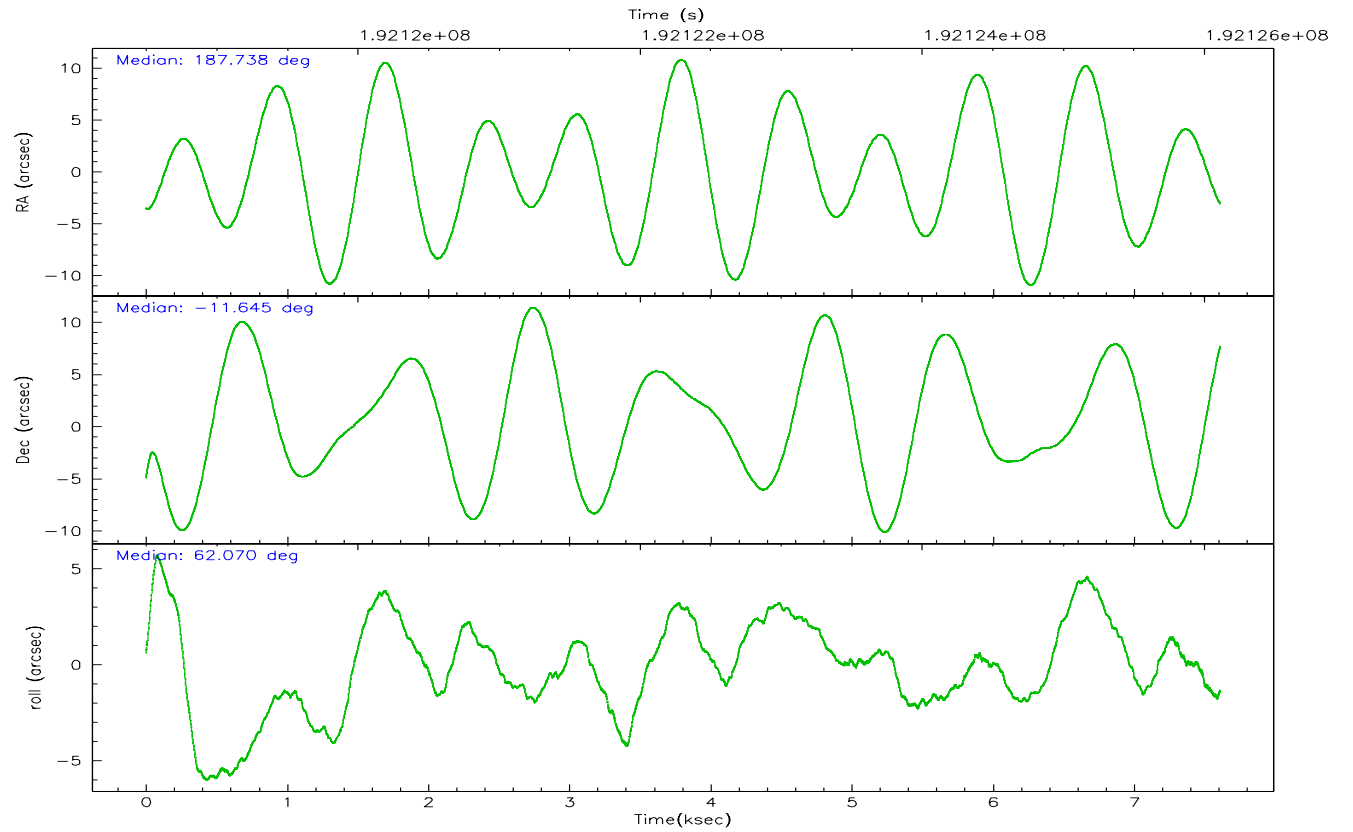
	ccd 2	ccd 3	ccd 5	ccd 6	ccd 7	ccd 8
grade 0 events	11735	12196	8114	11978	4968	14057
	17%	18%	8%	17%	5%	17%
grade 1 events	82	77	196	62	39	87
	0%	0%	0%	0%	0%	0%
grade 2 events	3789	4058	18753	4204	11908	5951
	5%	6%	18%	6%	13%	7%
grade 3 events	1598	1644	1311	1698	2743	2365
	2%	2%	1%	2%	3%	2%
grade 4 events	1618	1697	1279	1672	2645	2389
	2%	2%	1%	2%	2%	2%
grade 5 events	2171	2498	4309	2531	4955	3139
	3%	3%	4%	3%	5%	3%
grade 6 events	3124	3280	24215	3948	22069	5884
	4%	4%	23%	5%	24%	7%
grade 7 events	43058	41656	43012	43552	40011	48201
	64%	62%	42%	62%	44%	58%

2.2 Compared Parameters

Parameter	Planned	Actual	Parameter	Planned	Actual
Instrument	ACIS	ACIS	Obspar format version number	6	6
Detector	ACIS-235678	ACIS-235678	Obspar file type	PREDICTED	ACTUAL
Grating	NONE	NONE	Obspar update status	NONE	UPDATED
Data mode	FAINT	FAINT	On-chip summing requested	N	N
Observation mode	POINTING	POINTING	Subarray requested	NONE	NONE
Pointing RA	187.739129	187.7377222883745	Alternating exposures requested	N	N
Pointing Dec	-11.672326	-11.64524097582014	Primary exposure time	0.000000	3.2
Pointing Roll	61.922141	62.07847686832153			
SIM focus pos (mm)	-0.684267	-0.6828225247311905			
SIM defocus (mm)	0	0.001444936568705701			
SIM translation stage pos (mm)	-190.132523	-190.1400660498719			
SIM translation stage offset (mm)	0	0.00754346686406393			
Observation start time	192118677.184000	192117102.07067			
Observation start date	2004-02-02T14:16:53	2004-02-02T13:51:42			
Observation end time	192126104.184000	192126418.80857			
Observation end date	2004-02-02T16:20:40	2004-02-02T16:26:58			
Read mode	TIMED	TIMED			

2.3 Aspect



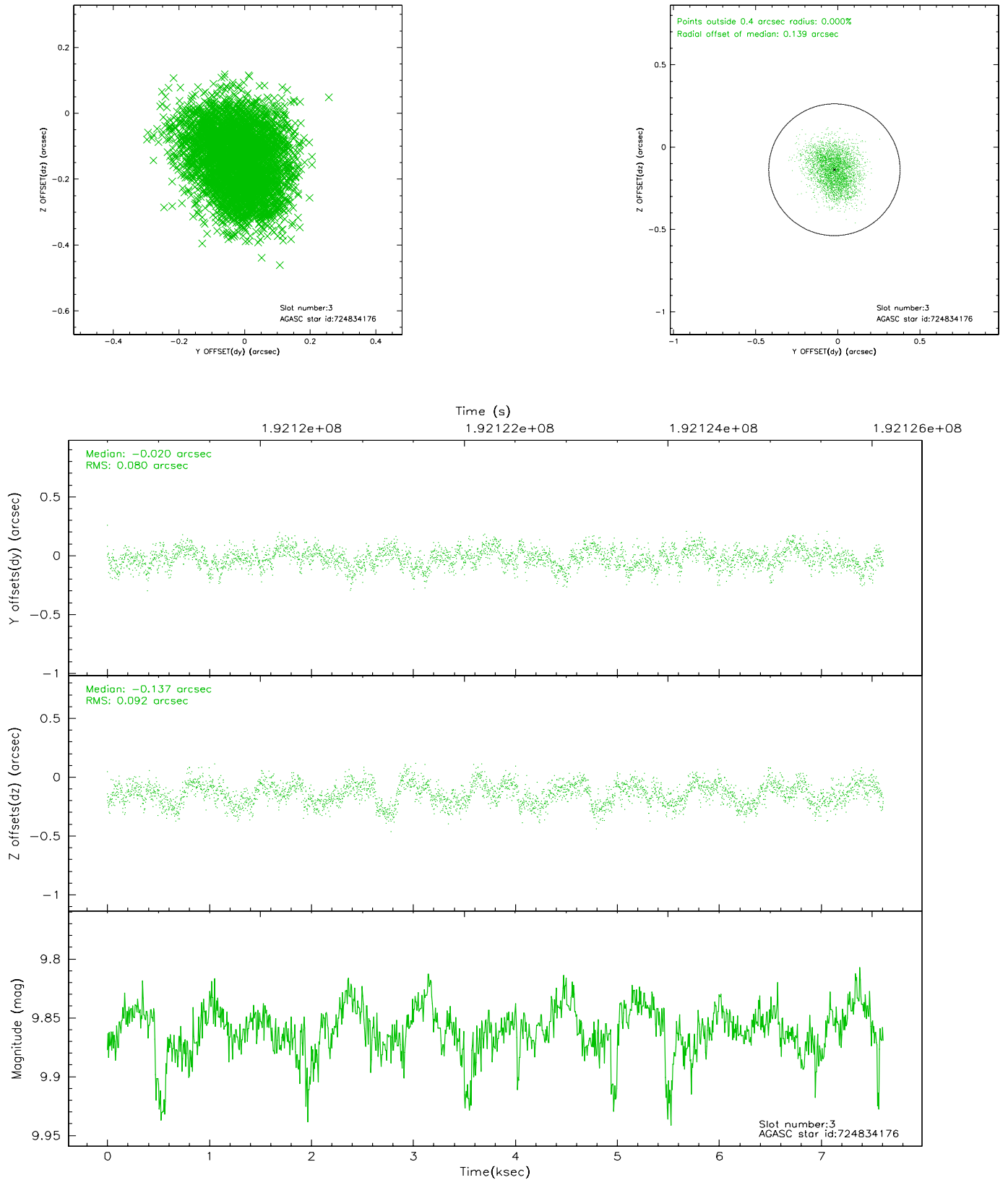


Slot Statistics

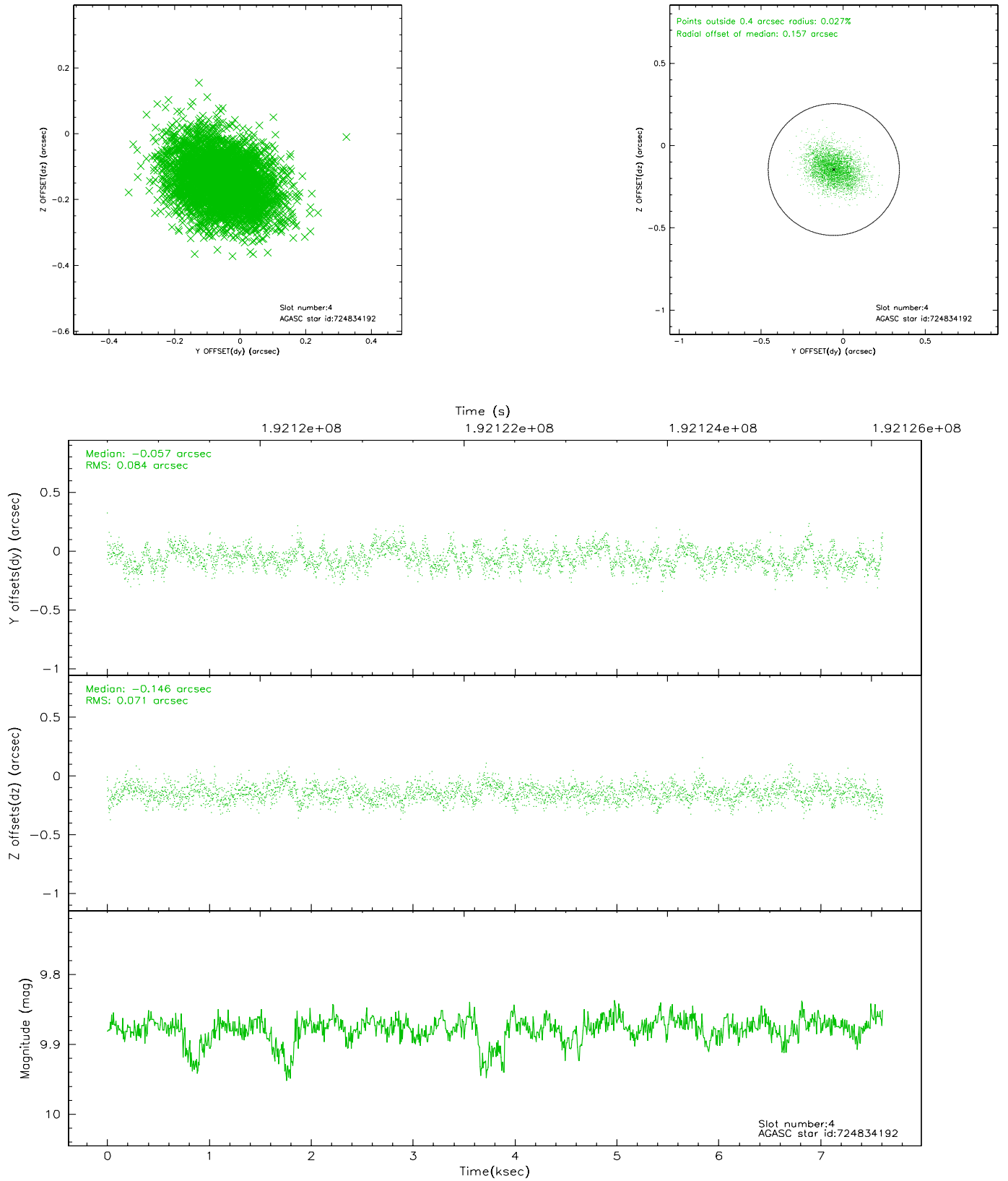
slot	status	id	mag	n_pts	med_dy	med_dz	dr1	dr2	ra	dec	mean_y	mean_z
0	FID	ACIS-S-2	7.10	1857	-0.028	0.005	0.007	0.011	0.000000	0.000000	-760.27	-1731.12
1	FID	ACIS-S-4	7.20	1857	0.037	0.012	0.008	0.013	0.000000	0.000000	2152.70	176.66
2	FID	ACIS-S-5	7.23	1857	-0.039	-0.009	0.007	0.012	0.000000	0.000000	-1812.20	171.08
3	GUIDE	724834176	9.86	3713	-0.020	-0.137	0.131	0.204	187.499703	-11.249672	944.77	1462.07
4	GUIDE	724834192	9.88	3709	-0.057	-0.146	0.117	0.189	187.566558	-11.249477	1056.94	1254.69
5	GUIDE	724836416	10.02	3712	0.053	0.145	0.116	0.196	187.960443	-11.697916	286.81	-731.15
6	GUIDE	724838120	9.37	3713	-0.059	0.156	0.111	0.178	188.548903	-11.454306	2034.66	-2153.11
7	GUIDE	724838688	10.43	3708	0.101	-0.017	0.149	0.252	187.506036	-11.634827	-266.79	788.10

2.4 Star Slots

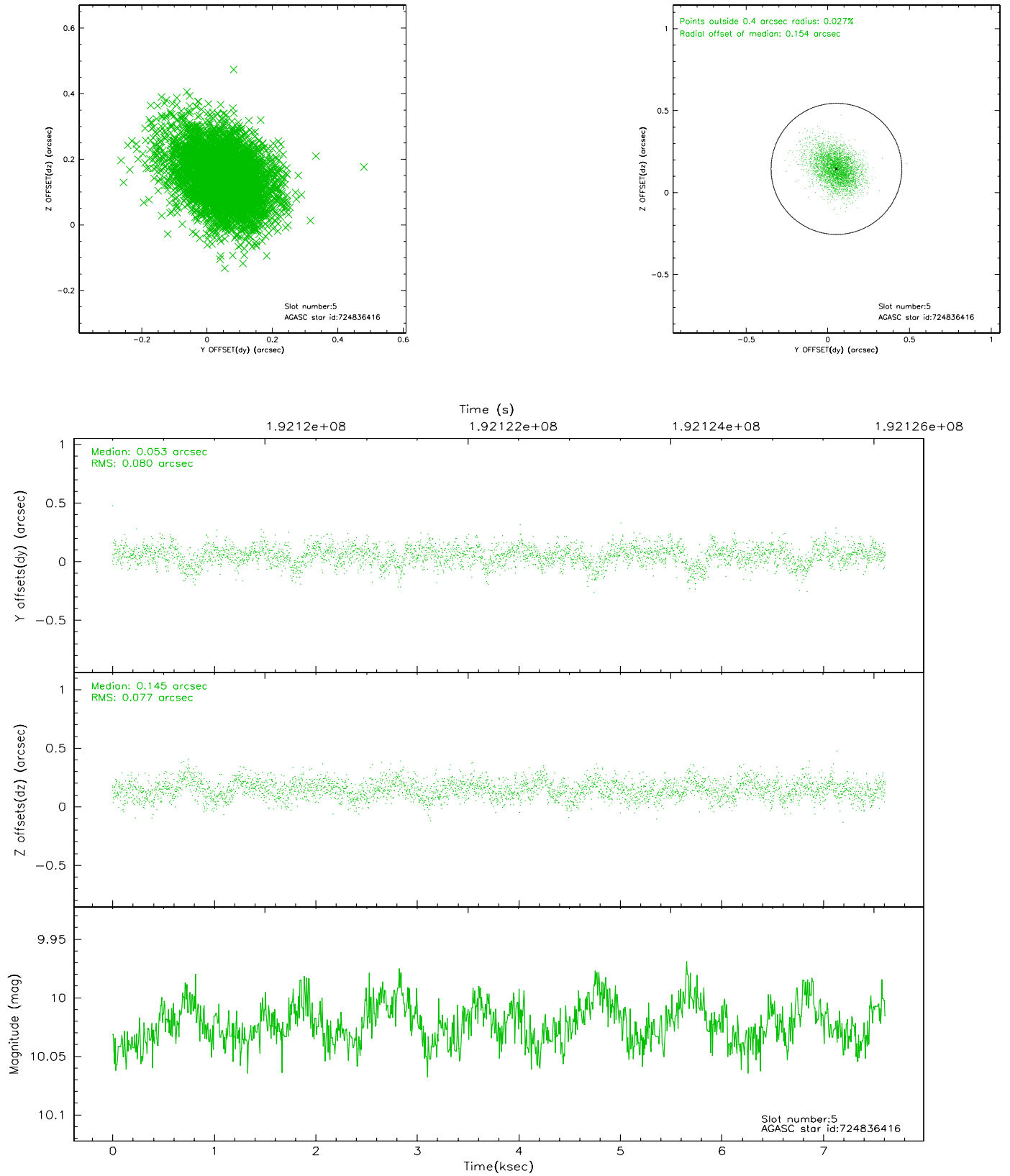
2.4.1 Slot 3



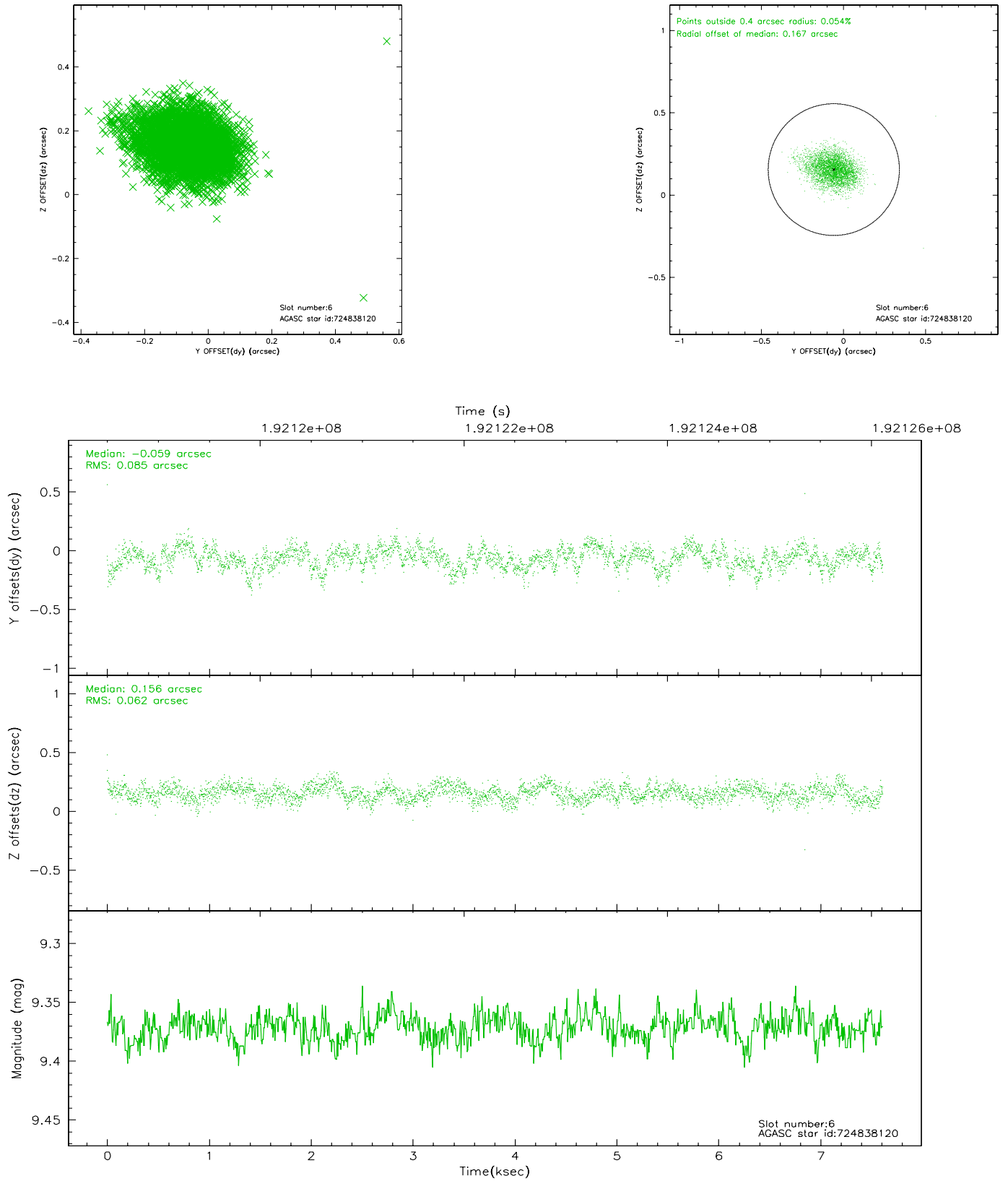
2.4.2 Slot 4



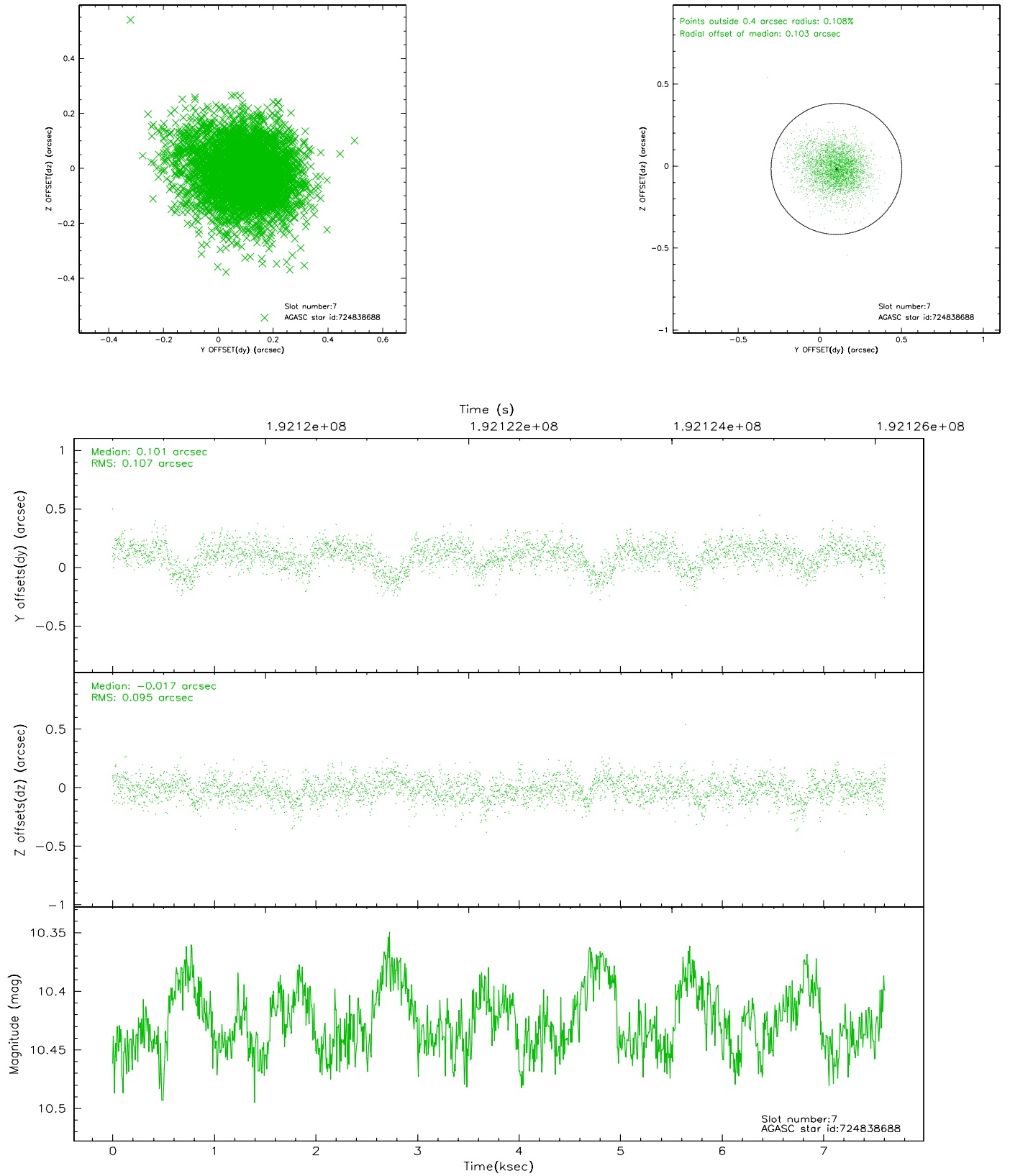
2.4.3 Slot 5



2.4.4 Slot 6

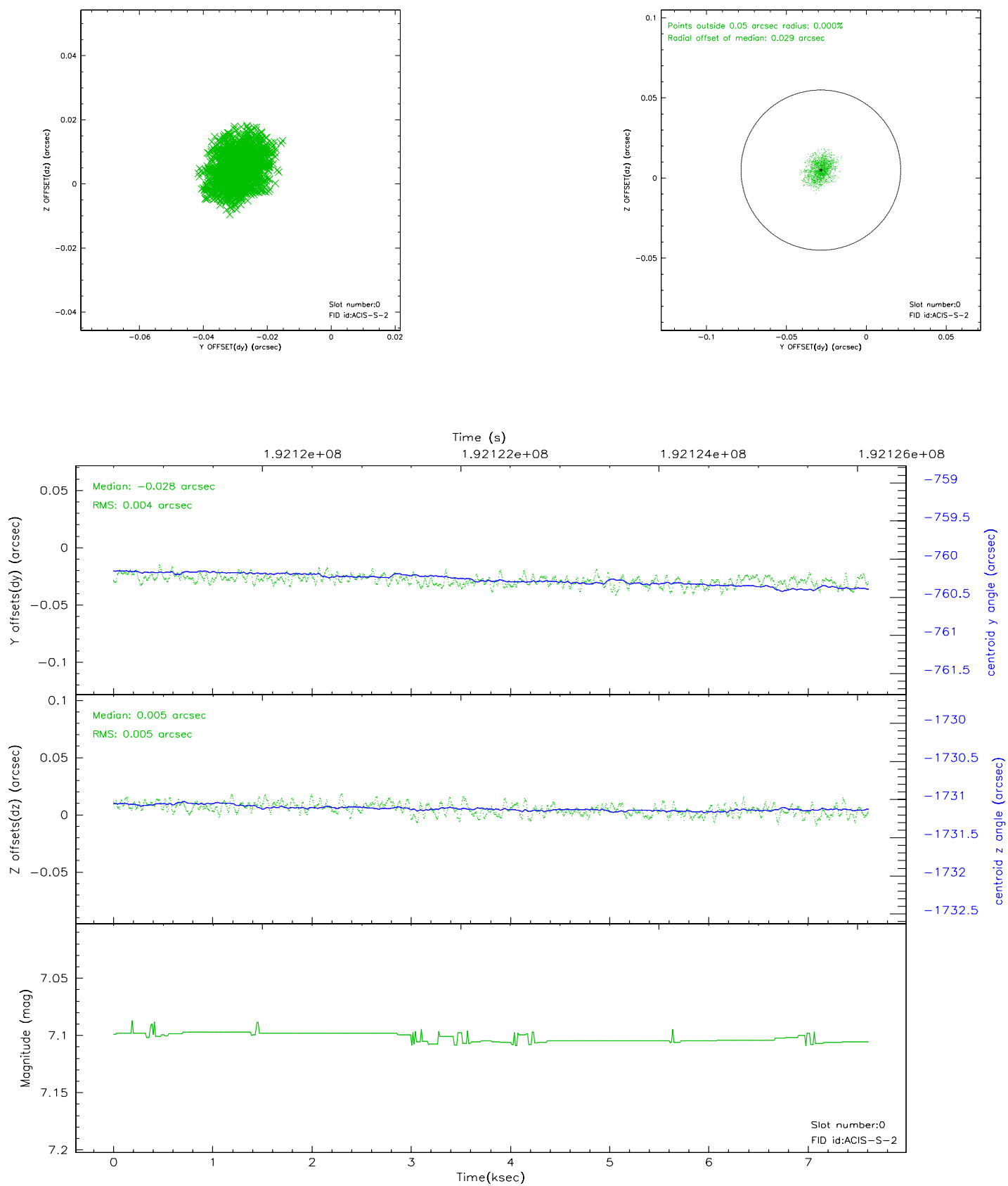


2.4.5 Slot 7

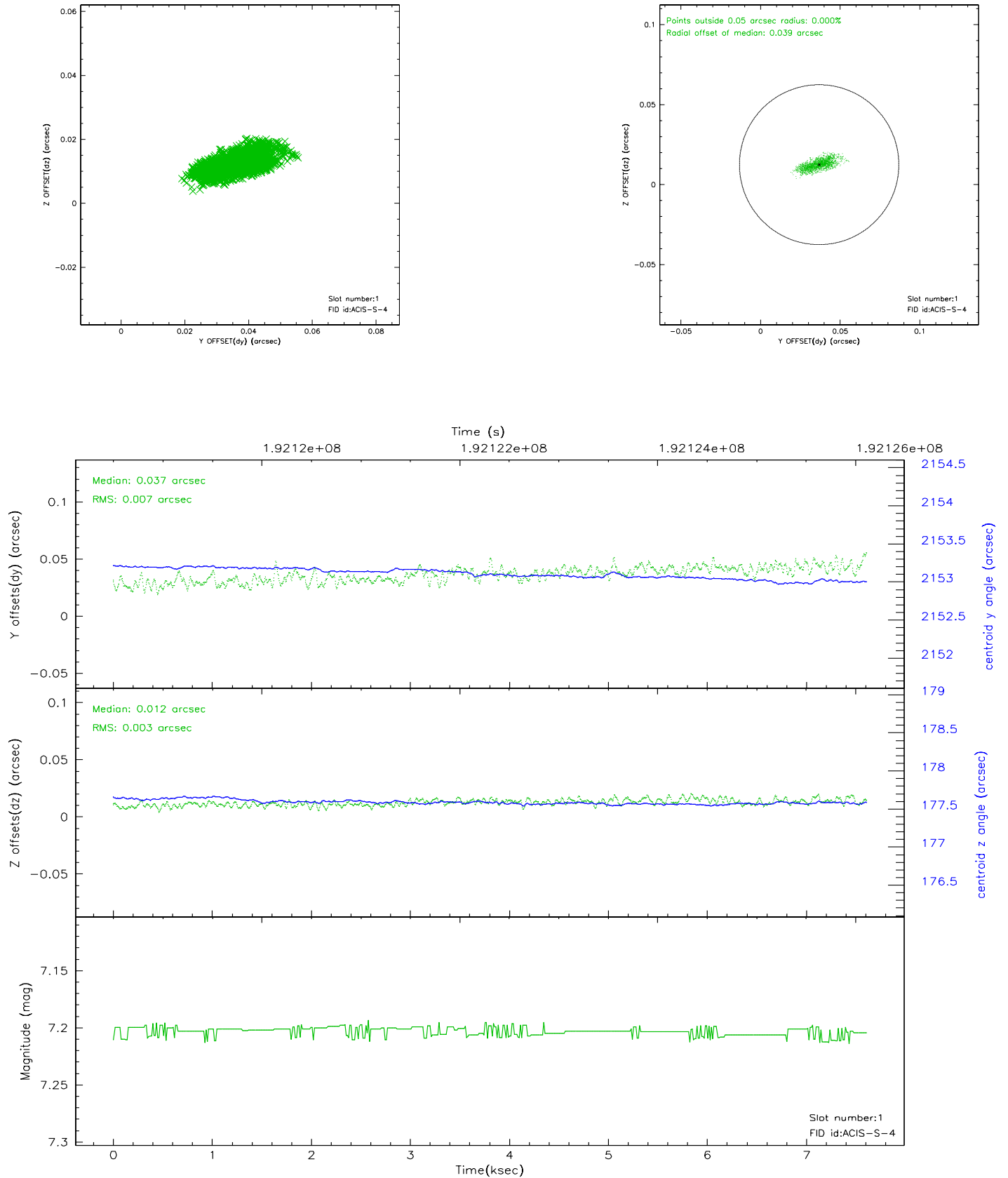


2.5 FID Slots

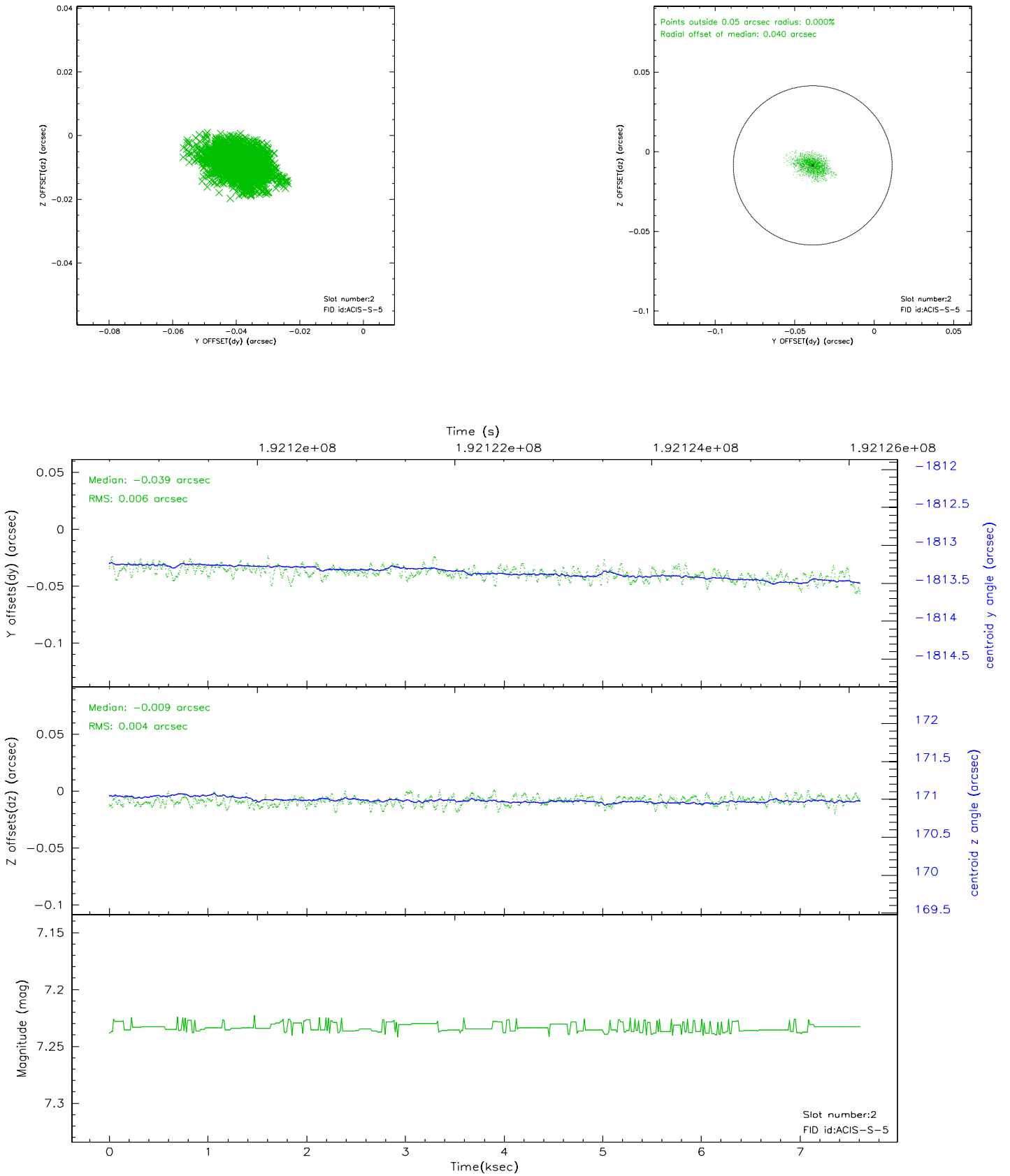
2.5.1 Slot 0



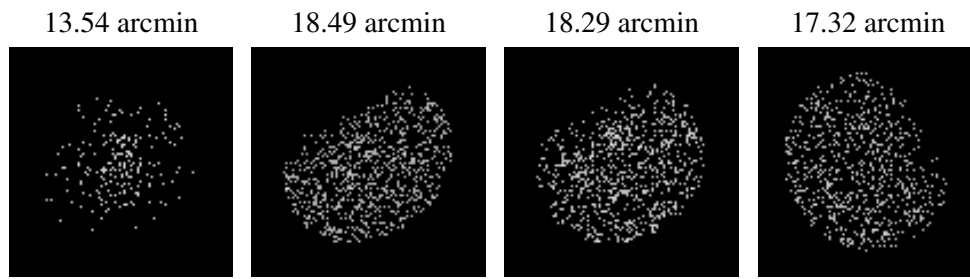
2.5.2 Slot 1



2.5.3 Slot 2



3 Point Sources



A Summary

A.1 Status

V&V Scientist	Jen Lauer
V&V Date (YYYY-MM-DD)	2006.06.05
V&V Edition	1
V&V Disposition and Status	OK
V&V Charge Time	7.606

A.2 Comments