

V&V Reference Report

L2 ASCDS Version : 7.6.8

Observation 4767 - L2 Version 001
Chandra X-Ray Center

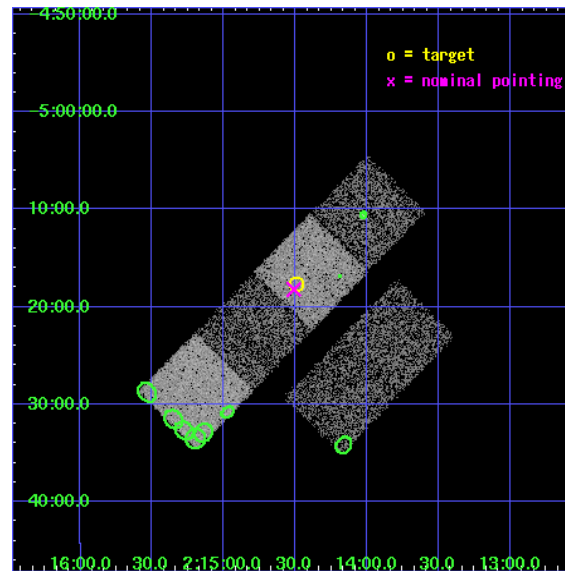
L2 Processing Date : Jun 26 2006

Contents

1	Front	2
2	OBI	3
2.1	OBI	3
2.1.1	Images	3
2.1.2	Bias	3
2.1.3	Parameters	4
2.1.4	Events	4
2.2	Compared Parameters	5
2.3	Aspect	6
2.4	Star Slots	9
2.4.1	Slot 3	9
2.4.2	Slot 4	10
2.4.3	Slot 5	11
2.4.4	Slot 6	12
2.4.5	Slot 7	13
2.5	FID Slots	14
2.5.1	Slot 0	14
2.5.2	Slot 1	15
2.5.3	Slot 2	16
3	Point Sources	17
A	Summary	18
A.1	Status	18
A.2	Comments	18

1 Front

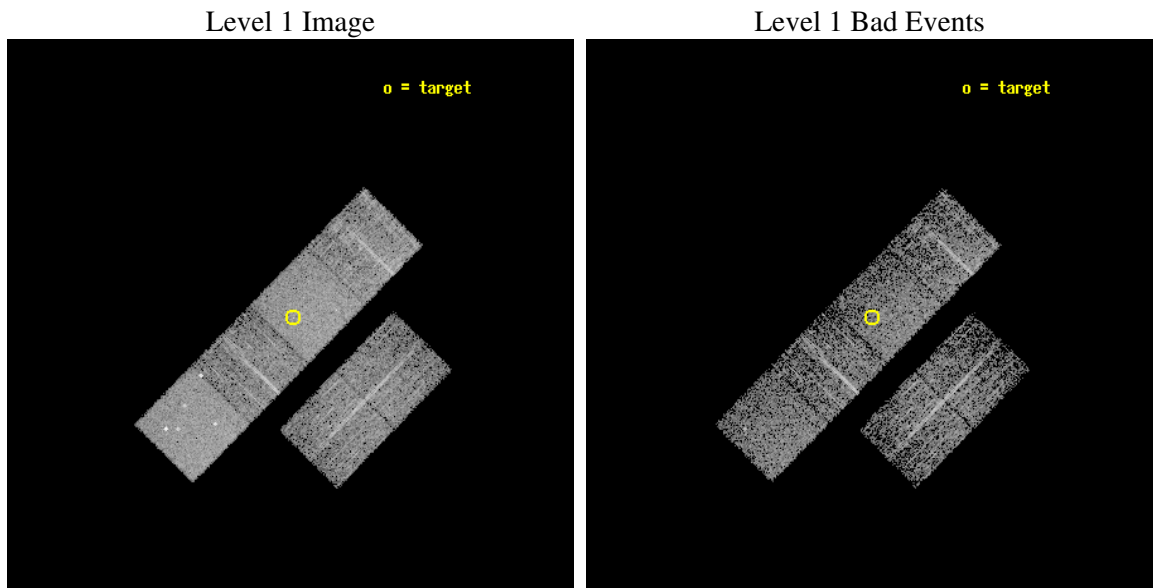
seq_num	700850
obs_id	4767
title	A Chandra Survey of Luminous, Radio-Loud Quasars at High Redshift
observer	Professor Gordon Garmire
object	PMN J0214-0518
dtcycle	0
cycle	P
ra_targ	33.622083
dec_targ	-5.295694
ra_nom	33.627551969751
dec_nom	-5.3036066184282
roll_nom	314.39419201557
revision	2
ontime	4086.399984777
livetime	4034.6555276351
ontime2	4086.399984777
ontime3	4086.399984777
ontime5	4086.399984777
ontime6	4086.399984777
ontime7	4086.399984777
ontime8	4086.399984777
l2events	40557



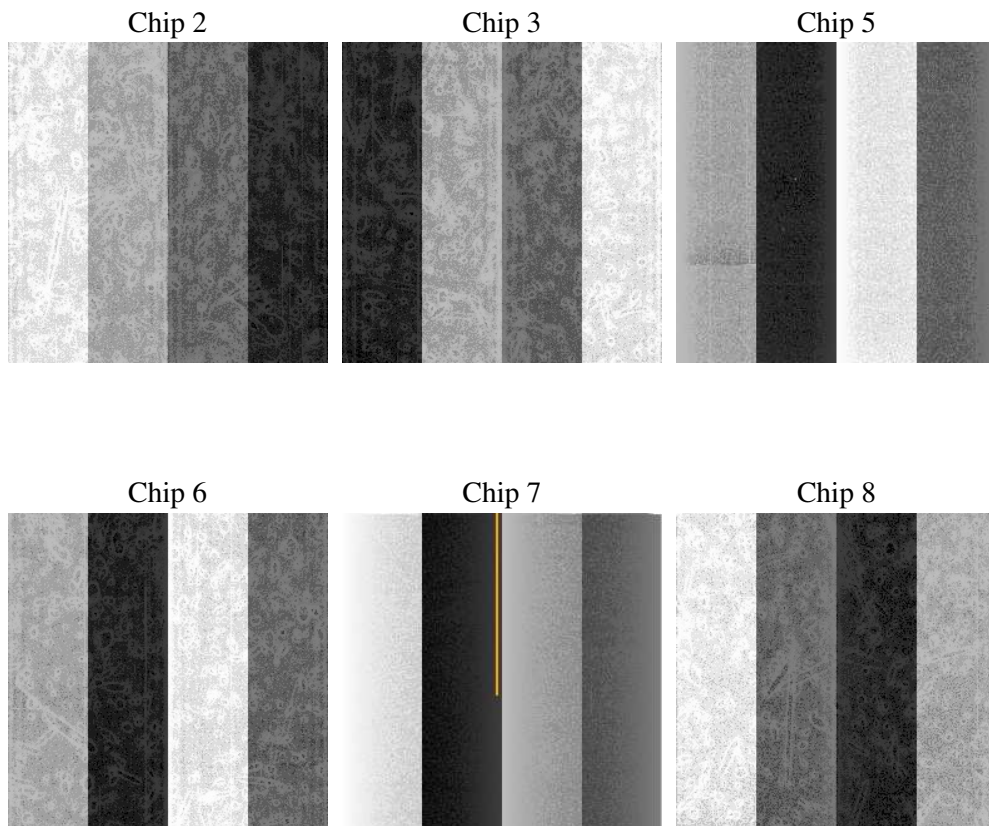
2 OBI

2.1 OBI

2.1.1 Images



2.1.2 Bias



2.1.3 Parameters

obi_num	1
ascdsver	7.6.8
caldsver	3.2.2
date	2006-06-26T22:26:20
revision	2

sched_exp_time	3913.000000
ontime	4281.3715657294
ontime2	4281.3715657294
ontime3	4281.3715657294
ontime5	4281.3715657294
ontime6	4281.3715657294
ontime7	4281.3715657294
ontime8	4281.3715657294
l1events	161922

2.1.4 Events

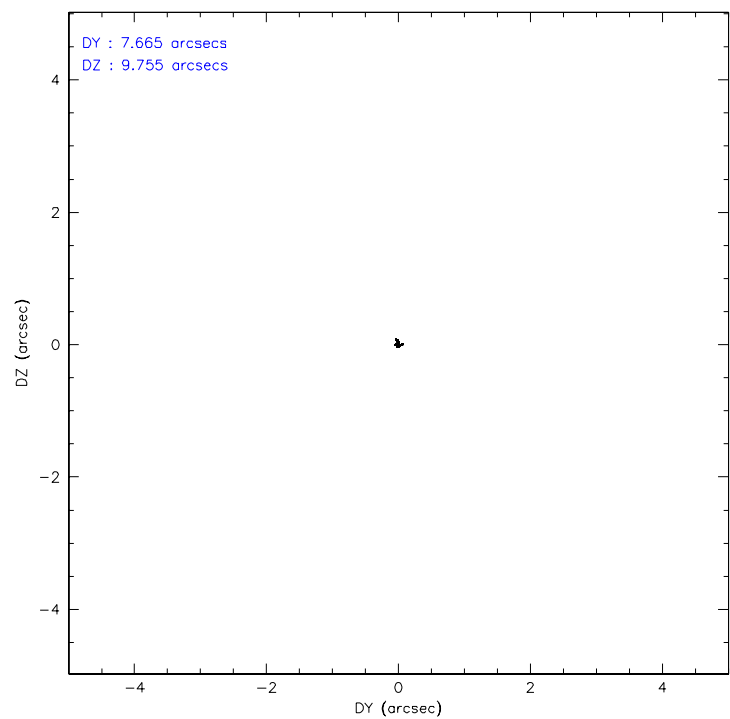
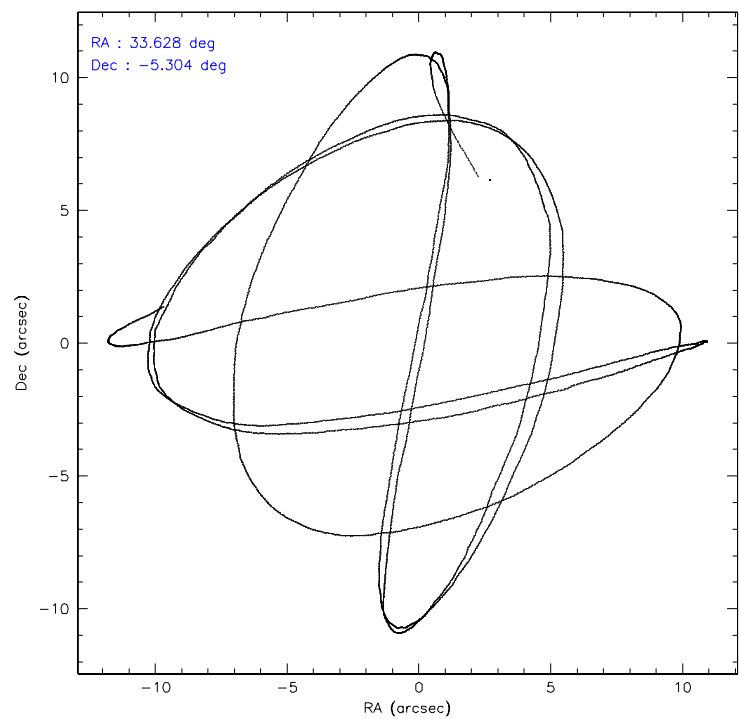
	ccd 2	ccd 3	ccd 5	ccd 6	ccd 7	ccd 8
level 1 events	22632	20766	35297	23198	31774	28255
rejected events	19031	17194	18906	19325	19172	20762
rejected %	84%	82%	53%	83%	60%	73%

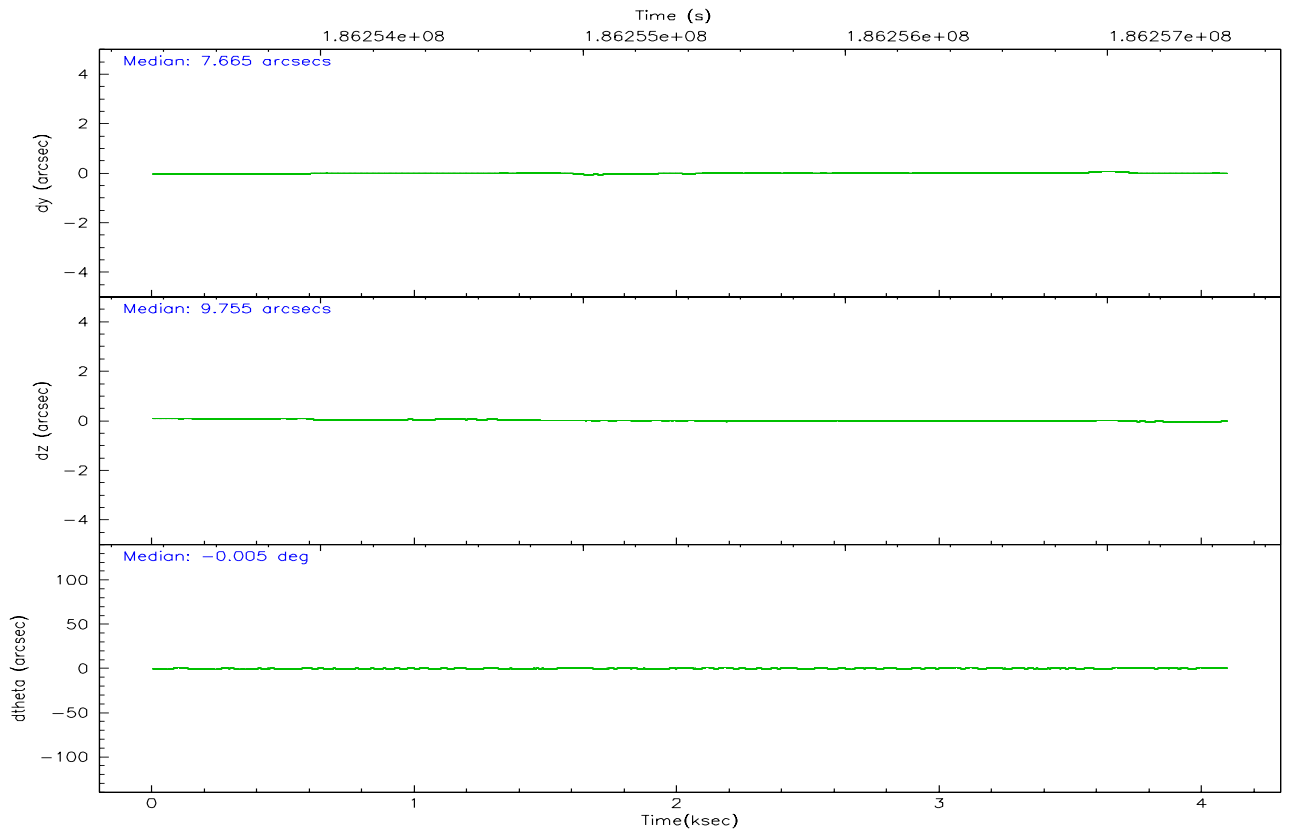
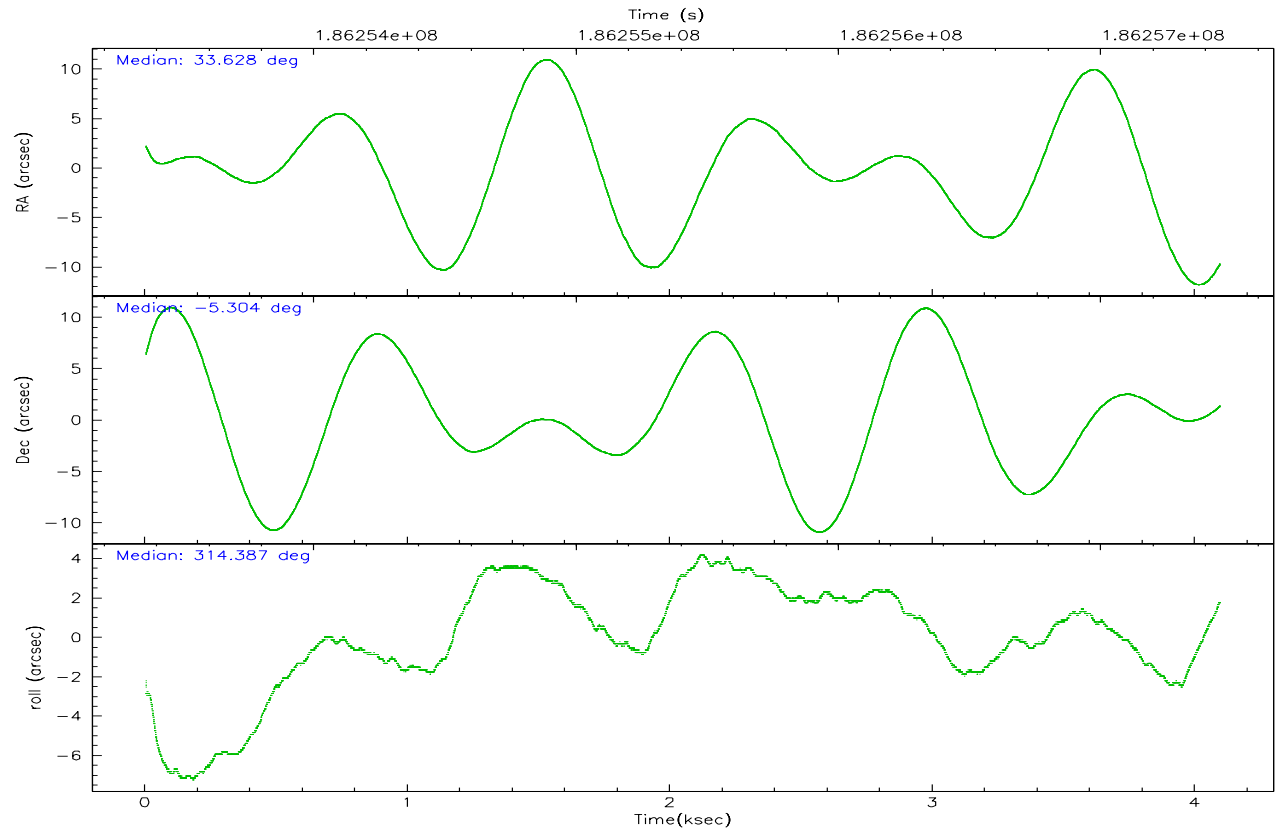
	ccd 2	ccd 3	ccd 5	ccd 6	ccd 7	ccd 8
grade 0 events	2070	2021	1724	2055	842	3194
	9%	9%	4%	8%	2%	11%
grade 1 events	26	15	57	11	14	14
	0%	0%	0%	0%	0%	0%
grade 2 events	662	612	5271	690	3109	1465
	2%	2%	14%	2%	9%	5%
grade 3 events	260	296	446	324	665	844
	1%	1%	1%	1%	2%	2%
grade 4 events	299	292	376	325	693	770
	1%	1%	1%	1%	2%	2%
grade 5 events	899	974	1691	1009	1944	1257
	3%	4%	4%	4%	6%	4%
grade 6 events	451	477	9249	621	7832	1598
	1%	2%	26%	2%	24%	5%
grade 7 events	17965	16079	16483	18163	16675	19113
	79%	77%	46%	78%	52%	67%

2.2 Compared Parameters

Parameter	Planned	Actual	Parameter	Planned	Actual
Instrument	ACIS	ACIS	Obspar format version number	6	6
Detector	ACIS-235678	ACIS-235678	Obspar file type	PREDICTED	ACTUAL
Grating	NONE	NONE	Obspar update status	NONE	UPDATED
Data mode	FAINT	FAINT	On-chip summing requested	N	N
Observation mode	POINTING	POINTING	Subarray requested	NONE	NONE
Pointing RA	33.601118	33.62755196975119	Alternating exposures requested	N	N
Pointing Dec	-5.296719	-5.303606618428176	Primary exposure time	0.000000	3.2
Pointing Roll	314.235113	314.3941920155671			
SIM focus pos (mm)	-0.684267	-0.6828225247311905			
SIM defocus (mm)	0	0.001444936568705701			
SIM translation stage pos (mm)	-190.132523	-190.1425803651734			
SIM translation stage offset (mm)	0	0.01005778216563158			
Observation start time	186253545.184000	186252385.45303			
Observation start date	2003-11-26T17:04:41	2003-11-26T16:46:25			
Observation end time	186257458.184000	186258068.56577			
Observation end date	2003-11-26T18:09:54	2003-11-26T18:21:08			
Read mode	TIMED	TIMED			

2.3 Aspect



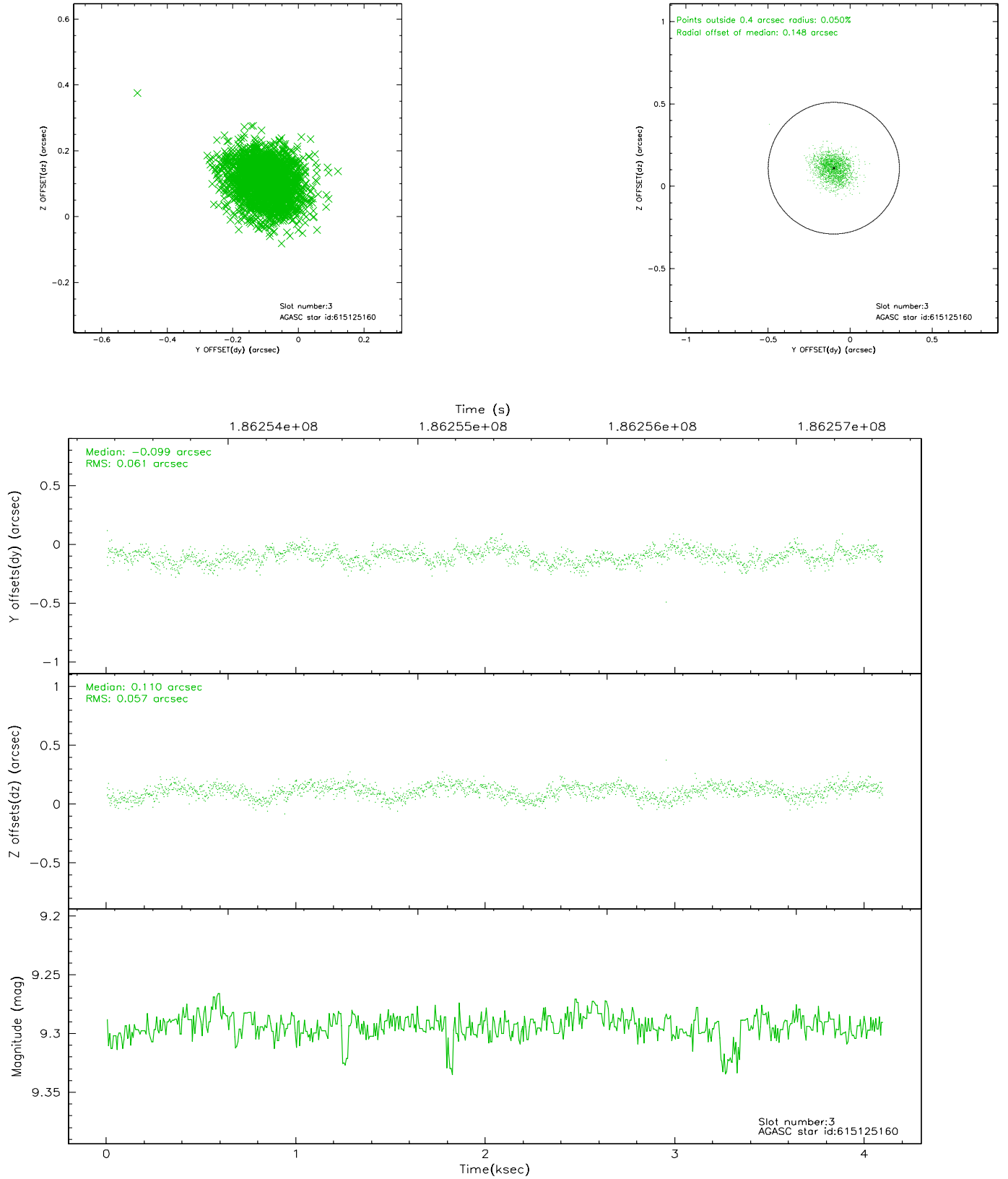


Slot Statistics

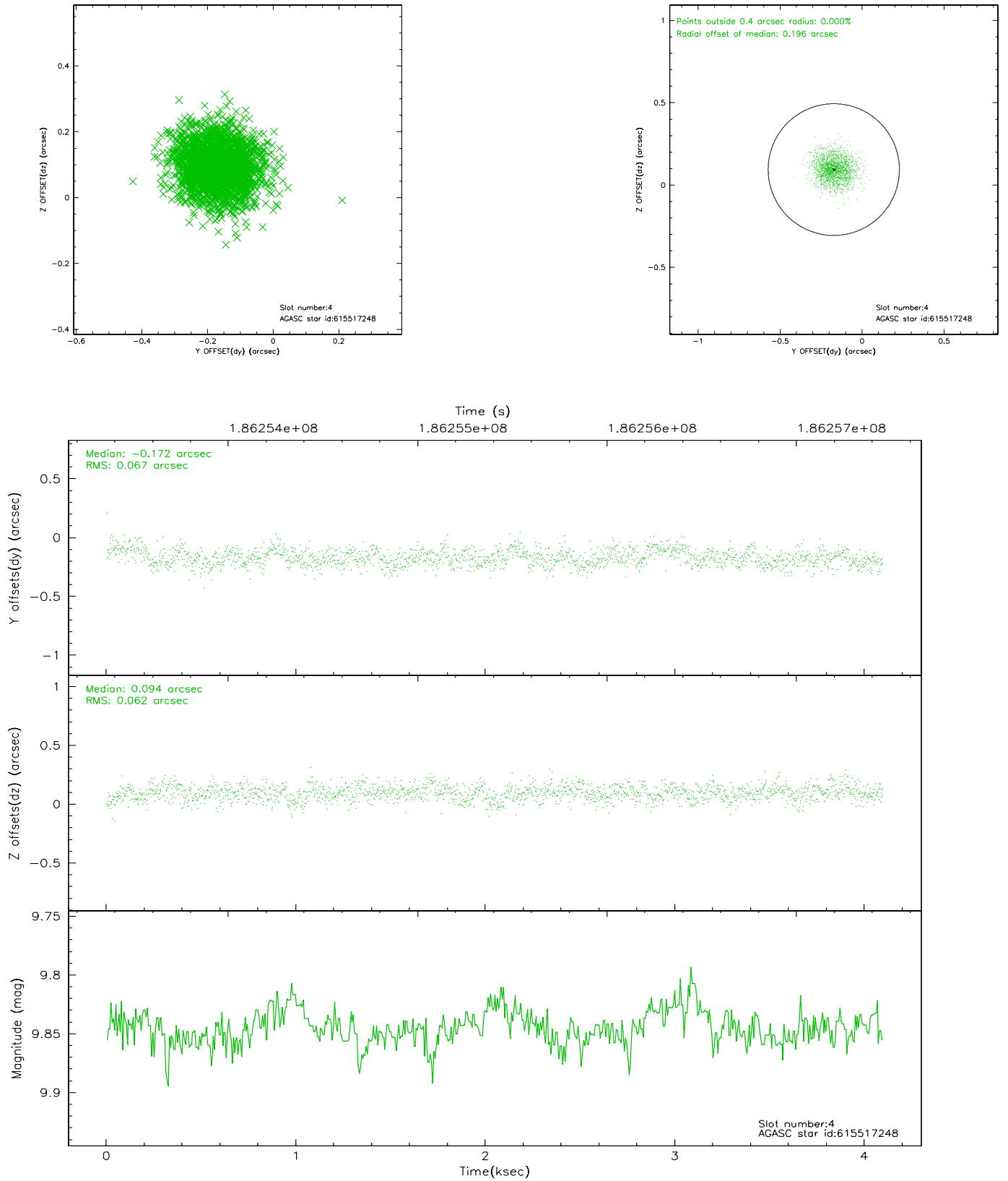
slot	status	id	mag	n_pts	med_dy	med_dz	dr1	dr2	ra	dec	mean_y	mean_z
0	FID	ACIS-S-2	7.10	999	-0.022	0.004	0.006	0.010	0.000000	0.000000	-760.42	-1730.97
1	FID	ACIS-S-4	7.20	999	0.032	0.010	0.005	0.009	0.000000	0.000000	2152.19	176.00
2	FID	ACIS-S-5	7.23	999	-0.041	-0.005	0.006	0.010	0.000000	0.000000	-1811.36	171.32
3	GUIDE	615125160	9.29	1997	-0.099	0.110	0.088	0.142	33.500170	-4.866158	-1362.92	821.99
4	GUIDE	615517248	9.85	1996	-0.172	0.094	0.098	0.157	32.944804	-5.095962	-2159.05	-1182.60
5	GUIDE	615518368	8.11	1998	0.025	-0.219	0.079	0.122	33.591608	-5.270150	-92.93	41.51
6	GUIDE	615518536	9.83	1998	-0.113	0.007	0.151	0.232	33.076289	-5.385298	-1082.76	-1570.67
7	GUIDE	615518928	8.61	1996	0.364	0.008	0.087	0.140	33.717262	-6.105948	2377.84	-1734.76

2.4 Star Slots

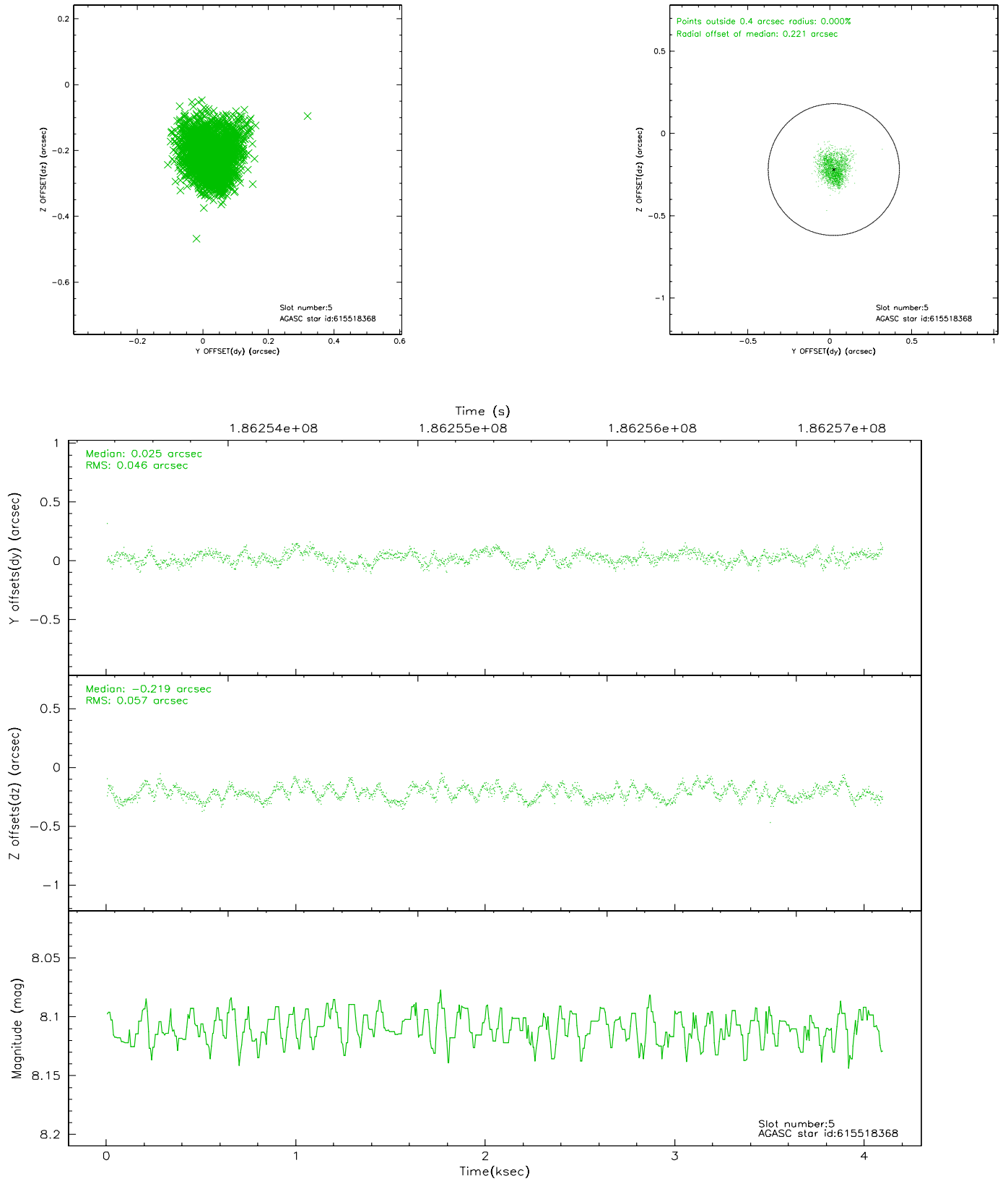
2.4.1 Slot 3



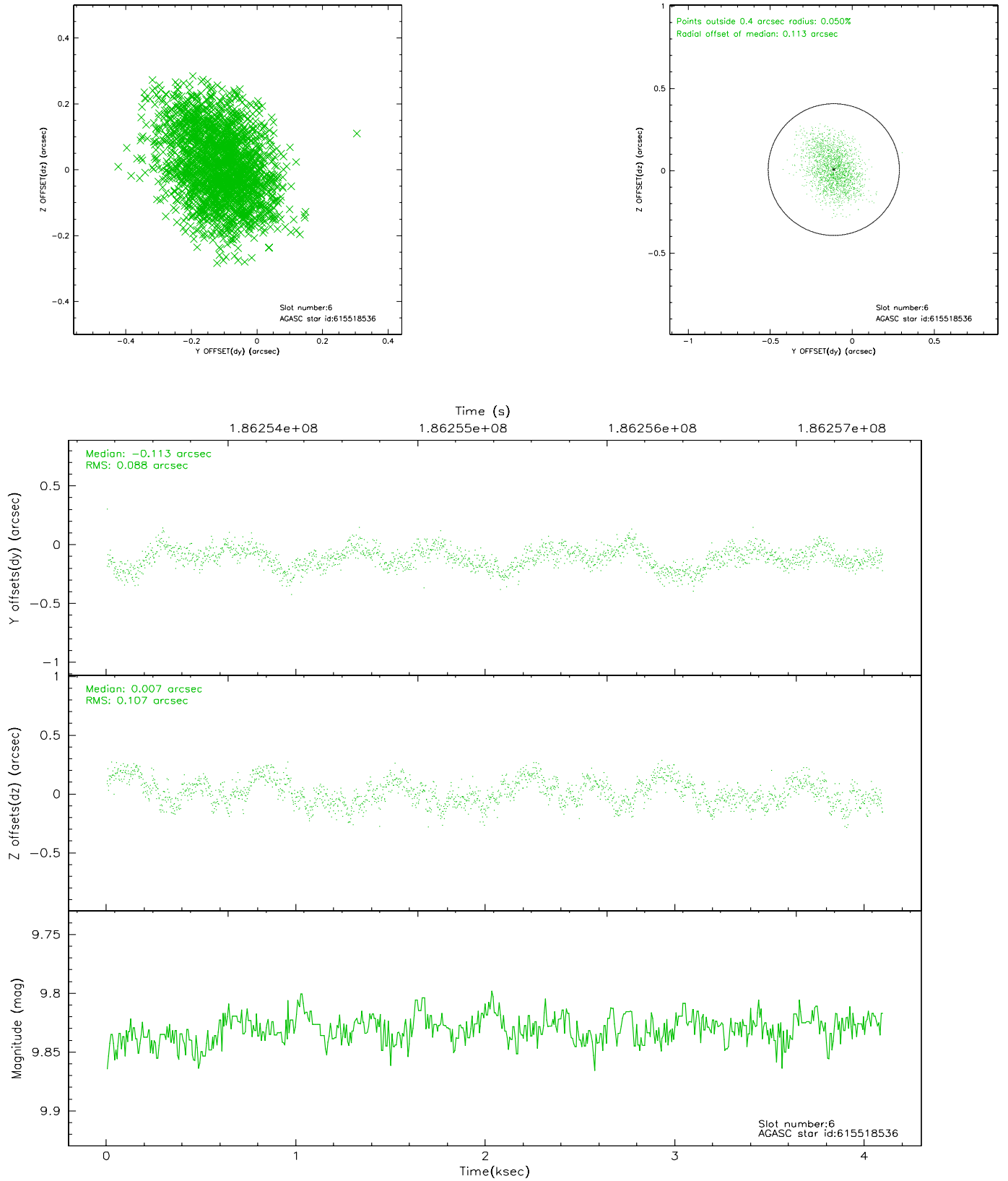
2.4.2 Slot 4



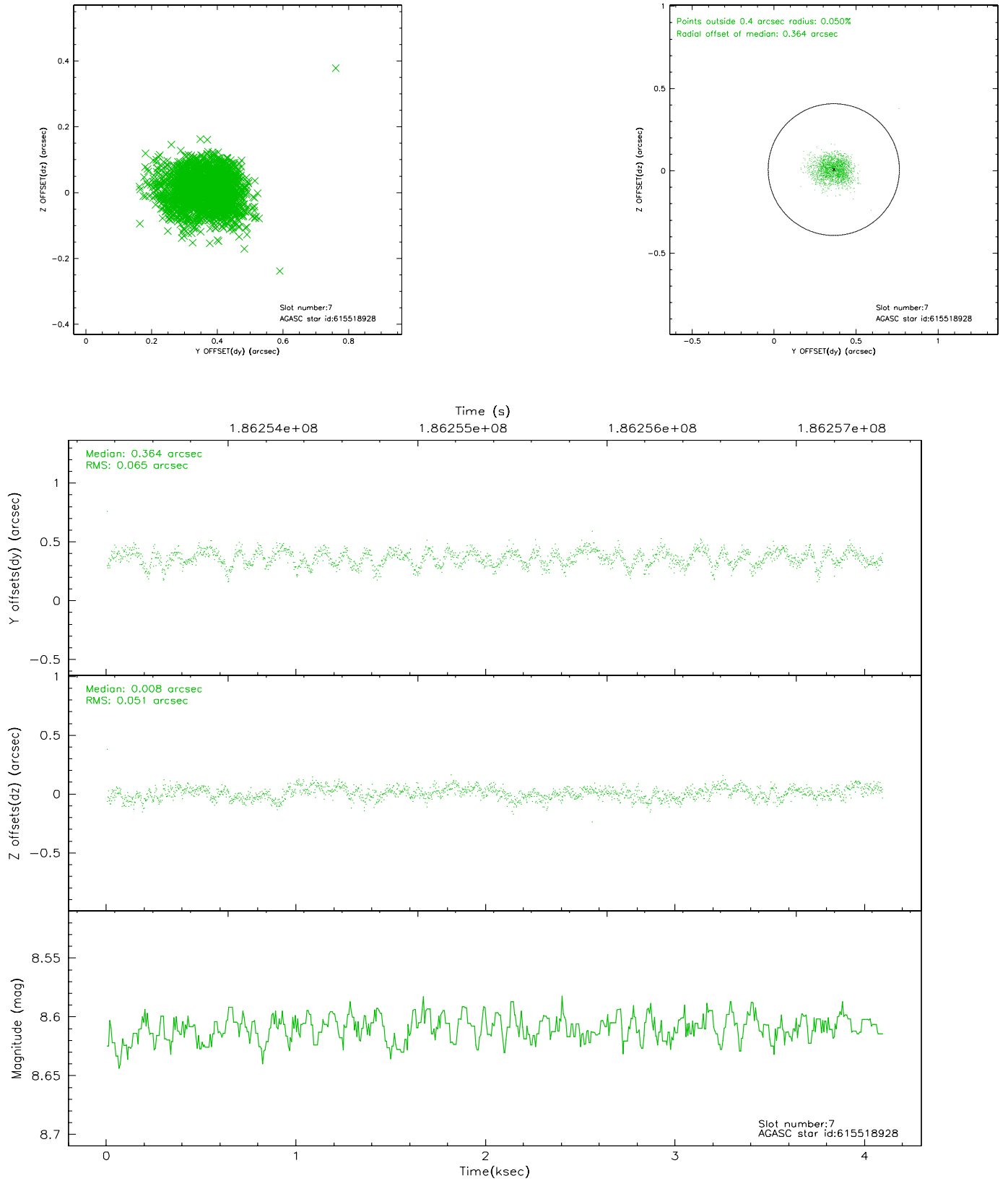
2.4.3 Slot 5



2.4.4 Slot 6

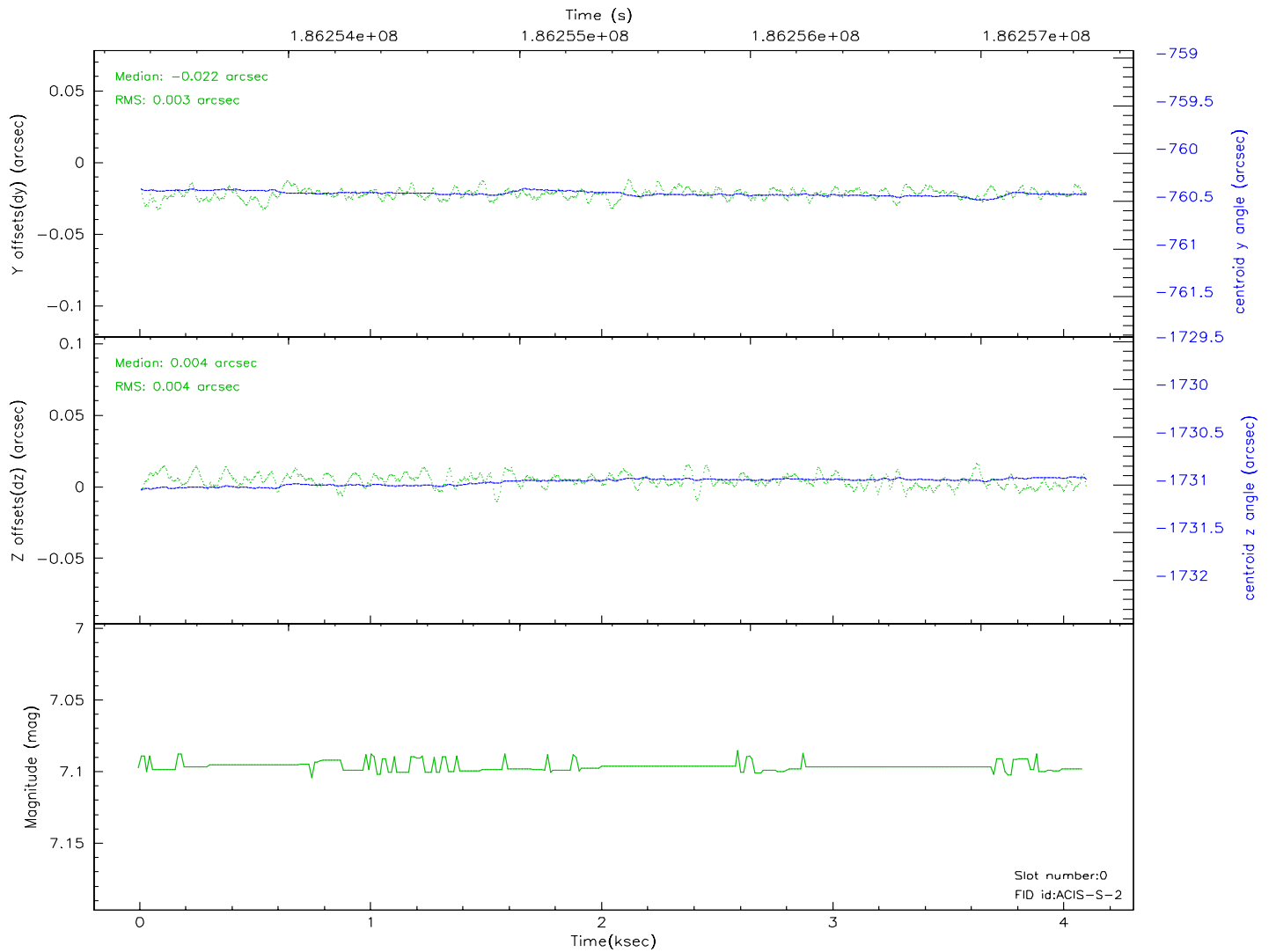
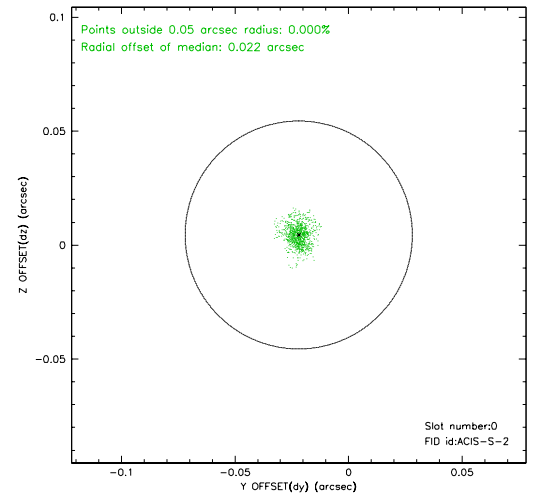
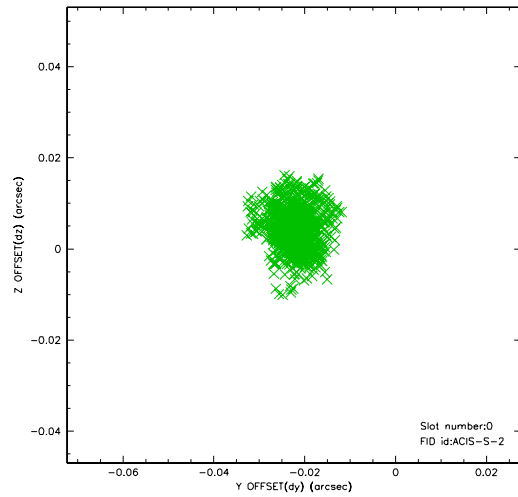


2.4.5 Slot 7

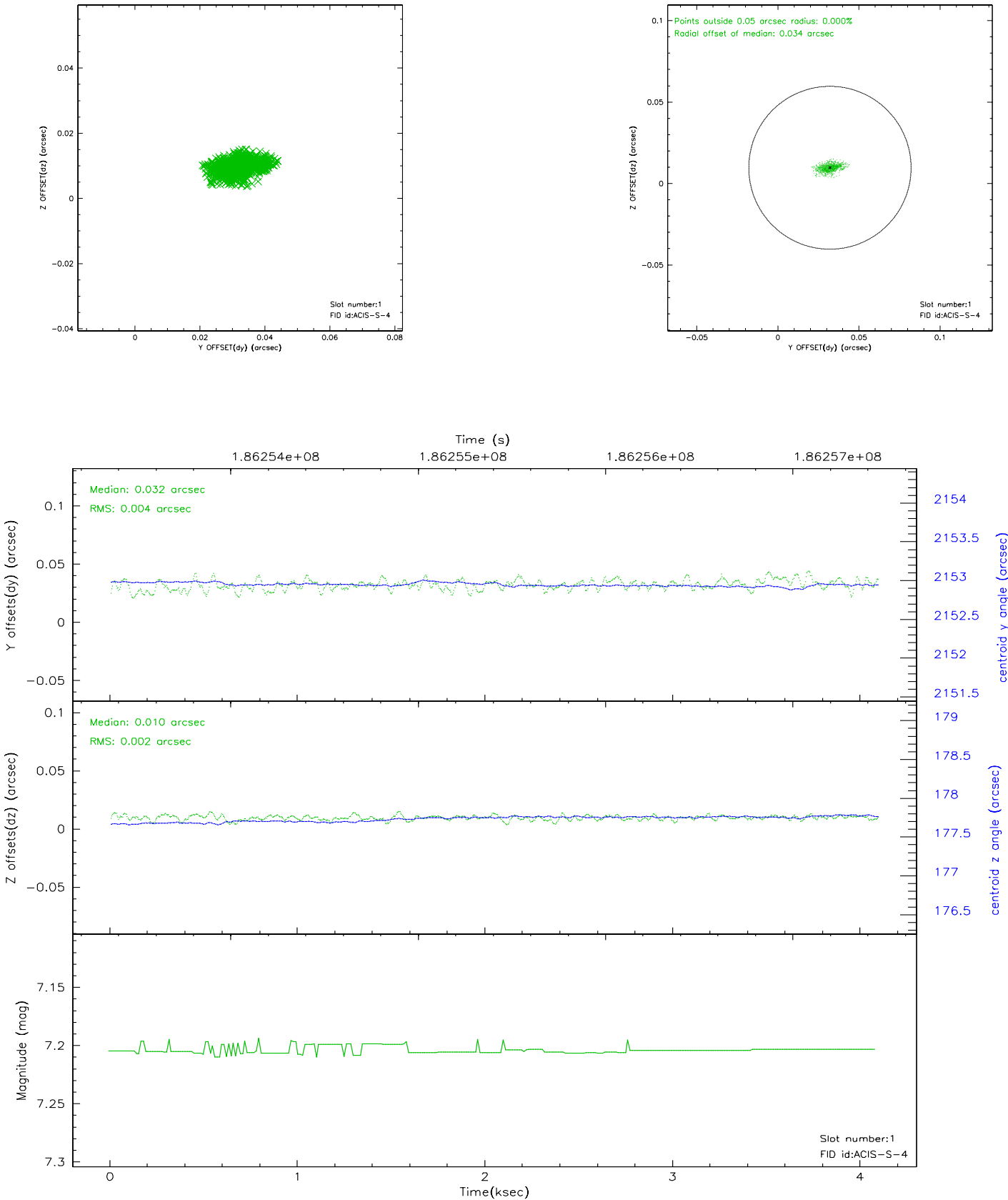


2.5 FID Slots

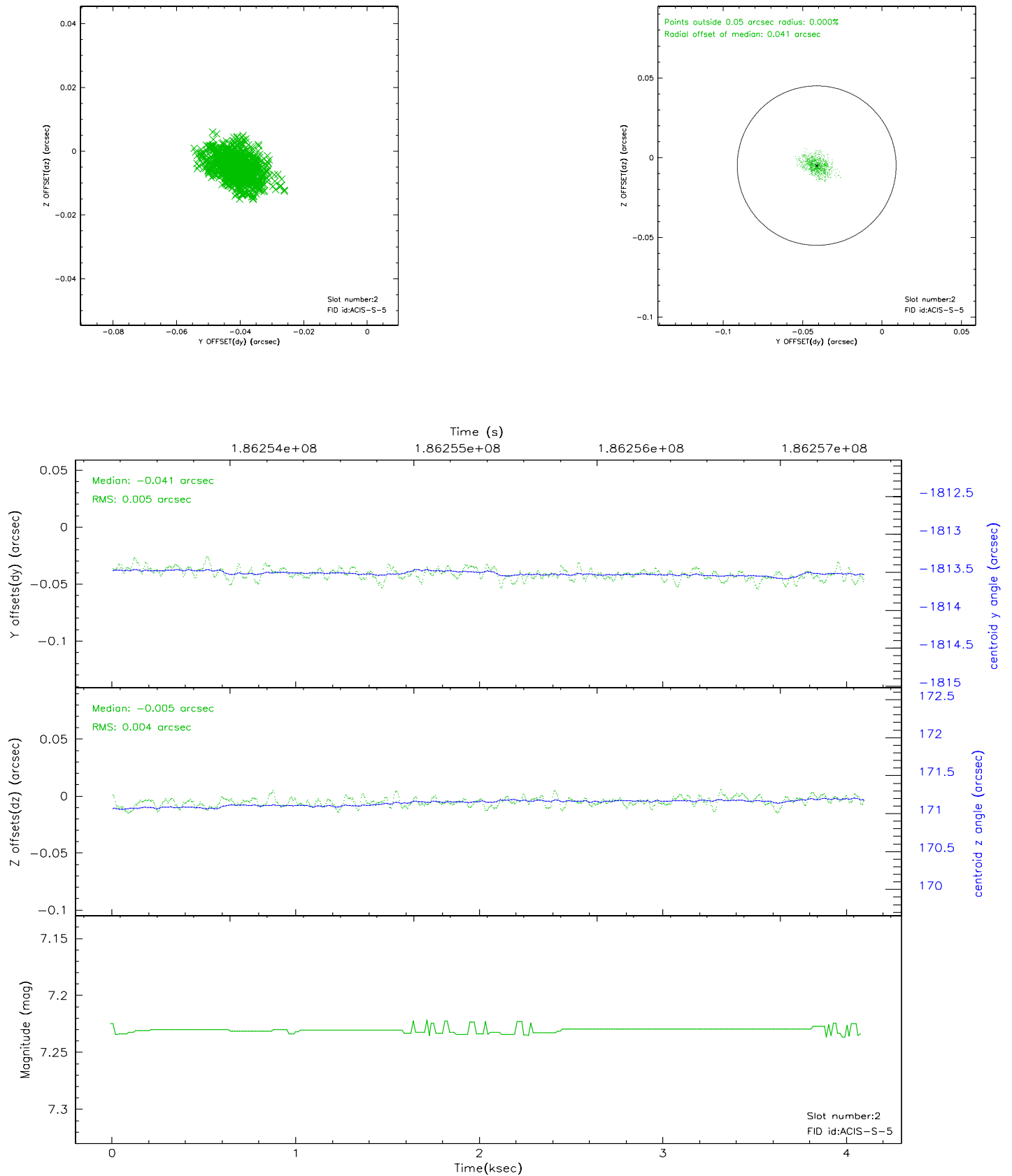
2.5.1 Slot 0



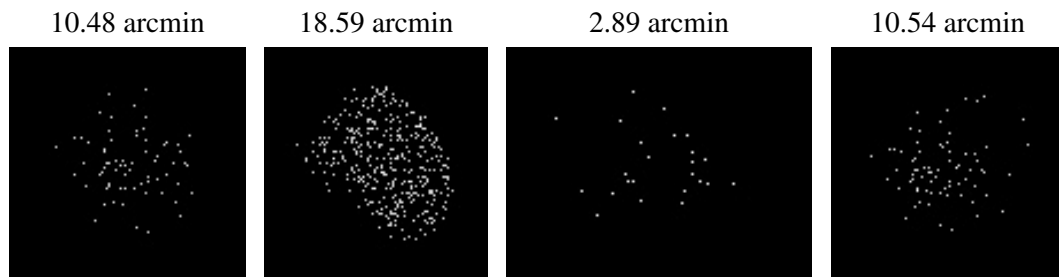
2.5.2 Slot 1



2.5.3 Slot 2



3 Point Sources



A Summary

A.1 Status

V&V Scientist	Beth Sundheim
V&V Date (YYYY-MM-DD)	2006.06.27
V&V Edition	1
V&V Disposition and Status	OK
V&V Charge Time	4.086

A.2 Comments