

# V&V Reference Report

## L2 ASCDS Version : 8.5.1

Observation 6185 - L2 Version 3  
Chandra X-Ray Center

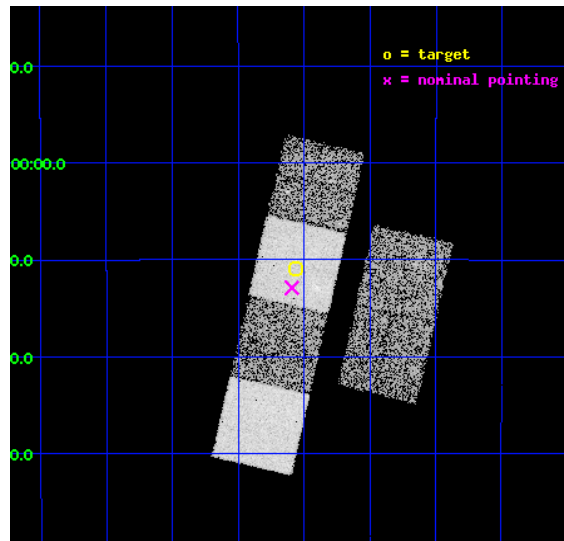
L2 Processing Date : Dec 15 2012

## Contents

<b>1</b>	<b>Front</b>	<b>2</b>
<b>2</b>	<b>OBI</b>	<b>3</b>
2.1	OBI . . . . .	3
2.1.1	Images . . . . .	3
2.1.2	Bias . . . . .	3
2.1.3	Parameters . . . . .	4
2.1.4	Events . . . . .	4
2.2	Compared Parameters . . . . .	5
2.3	Aspect . . . . .	6
2.4	Star Slots . . . . .	9
2.4.1	Slot 3 . . . . .	9
2.4.2	Slot 4 . . . . .	10
2.4.3	Slot 5 . . . . .	11
2.4.4	Slot 6 . . . . .	12
2.4.5	Slot 7 . . . . .	13
2.5	FID Slots . . . . .	14
2.5.1	Slot 0 . . . . .	14
2.5.2	Slot 1 . . . . .	15
2.5.3	Slot 2 . . . . .	16
<b>A</b>	<b>Summary</b>	<b>17</b>
A.1	Status . . . . .	17
A.2	Comments . . . . .	17

# 1 Front

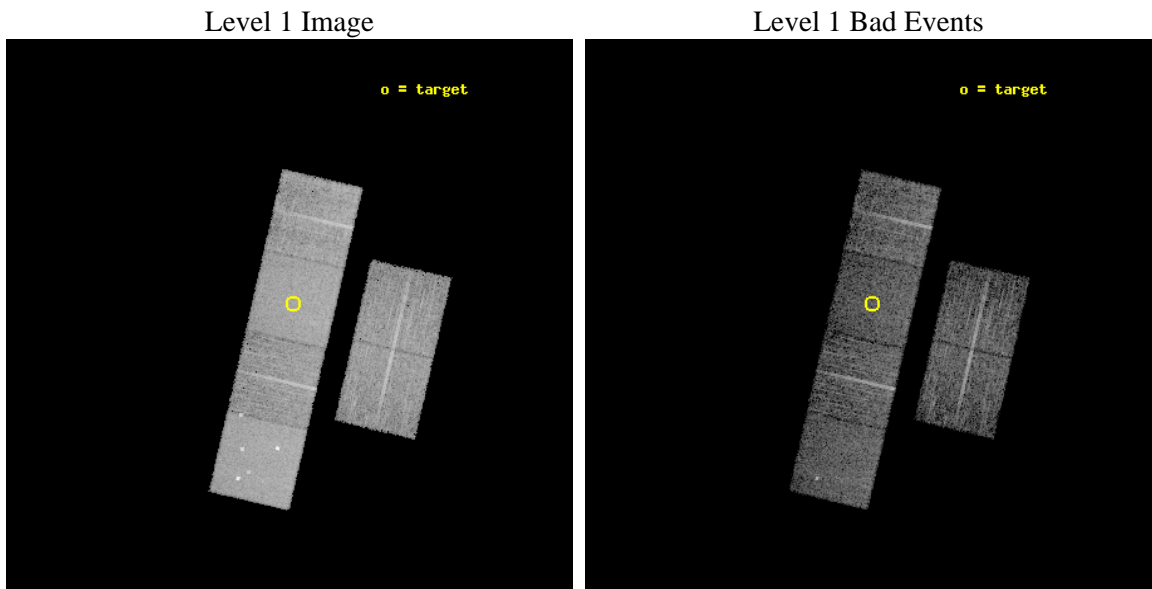
seq_num	600345	Sequence number
obs_id	6185	Observation id
title	An X-ray Search for Extragalactic Supernova Remnants in Three Nearby Galaxies: NGC 45, NGC 247 and NGC 300	Proposal title
observer	Dr. Thomas Pannuti	Principal investigator
object	NGC 45	Source name
dtcycle	0	&#160
cycle	P	events from which exps? Prim/Second/Both
ra_targ	3.516667	Observer's specified target RA [deg]
dec_targ	-23.181667	Observer's specified target Dec [deg]
ra_nom	3.5230972366692	Nominal RA [deg]
dec_nom	-23.215228512666	Nominal Dec [deg]
roll_nom	283.0091636487	Nominal Roll [deg]
revision	3	Processing version of data
ontime	6091.5151544511	Sum of GTIs [s]
livetime	6014.3807216954	Livetime [s]
ontime2	6091.5561944544	Sum of GTIs [s]
ontime3	6091.3920344412	Sum of GTIs [s]
ontime5	6091.4741144478	Sum of GTIs [s]
ontime6	6091.4330744445	Sum of GTIs [s]
ontime7	6091.5151544511	Sum of GTIs [s]
ontime8	6091.3509944677	Sum of GTIs [s]
l2events	76567	Number of level 2 events



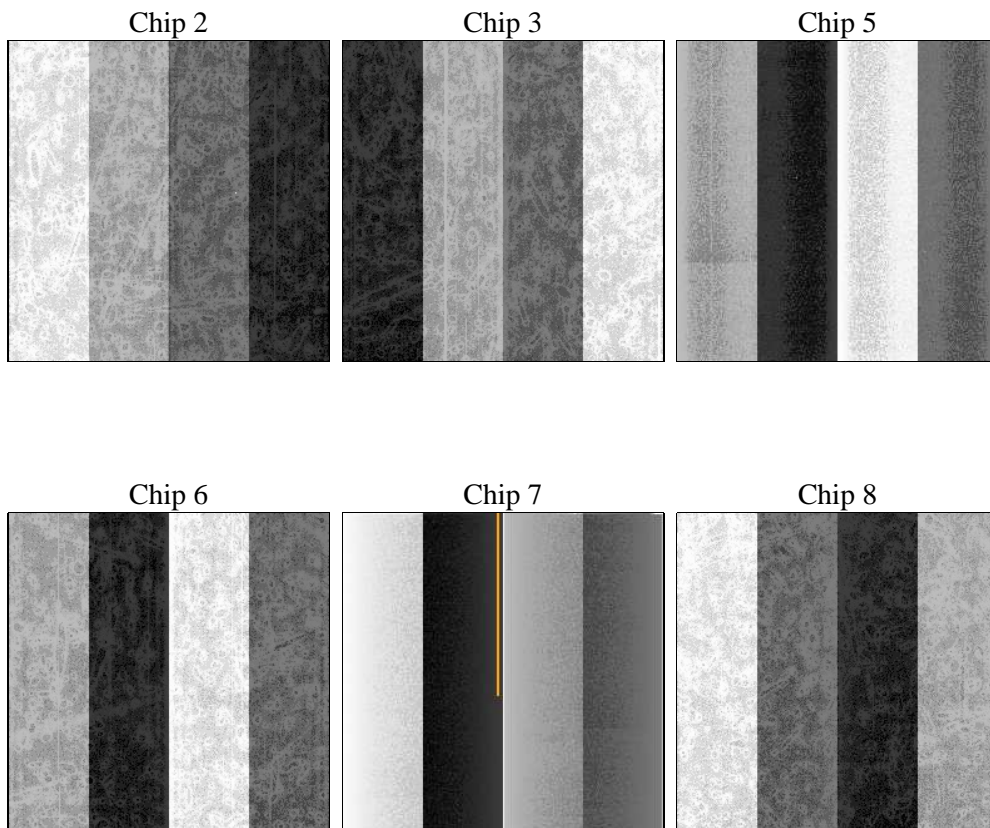
## 2 OBI

### 2.1 OBI

#### 2.1.1 Images



#### 2.1.2 Bias



### 2.1.3 Parameters

obi_num	0	Obi number	sched_exp_time	6000.000000	[s] Scheduled observation exposure time
ascdsver	8.5.1	Processing system revision	ontime	6091.5151544511	Sum of GTIs [s]
caldbver	4.5.5	&#160	ontime2	6091.5561944544	Sum of GTIs [s]
date	2012-12-15T23:06:29	Date and time of file creation	ontime3	6091.3920344412	Sum of GTIs [s]
revision	3	Processing version of data	ontime5	6091.4741144478	Sum of GTIs [s]
			ontime6	6091.4330744445	Sum of GTIs [s]
			ontime7	6091.5151544511	Sum of GTIs [s]
			ontime8	6091.3509944677	Sum of GTIs [s]
			l1events	324966	Number of level 1 events

### 2.1.4 Events

	ccd 2	ccd 3	ccd 5	ccd 6	ccd 7	ccd 8		ccd 2	ccd 3	ccd 5	ccd 6	ccd 7	ccd 8
level 1 events	44245	43560	71793	46922	62055	56391	grade 0 events	2484	2624	5239	2278	2632	3901
rejected events	38832	37936	36810	41368	34477	44451		5%	6%	7%	4%	4%	6%
rejected %	87%	87%	51%	88%	55%	78%	grade 1 events	28	25	136	22	56	34
								0%	0%	0%	0%	0%	0%
							grade 2 events	1089	1000	10454	1134	5519	2616
								2%	2%	14%	2%	8%	4%
							grade 3 events	486	525	1212	521	2456	1168
								1%	1%	1%	1%	3%	2%
							grade 4 events	443	562	1186	519	2387	1110
								1%	1%	1%	1%	3%	1%
							grade 5 events	1818	1877	4951	1976	5784	2633
								4%	4%	6%	4%	9%	4%
							grade 6 events	912	923	16912	1112	14594	3155
								2%	2%	23%	2%	23%	5%
							grade 7 events	36985	36024	31703	39360	28627	41774
								83%	82%	44%	83%	46%	74%

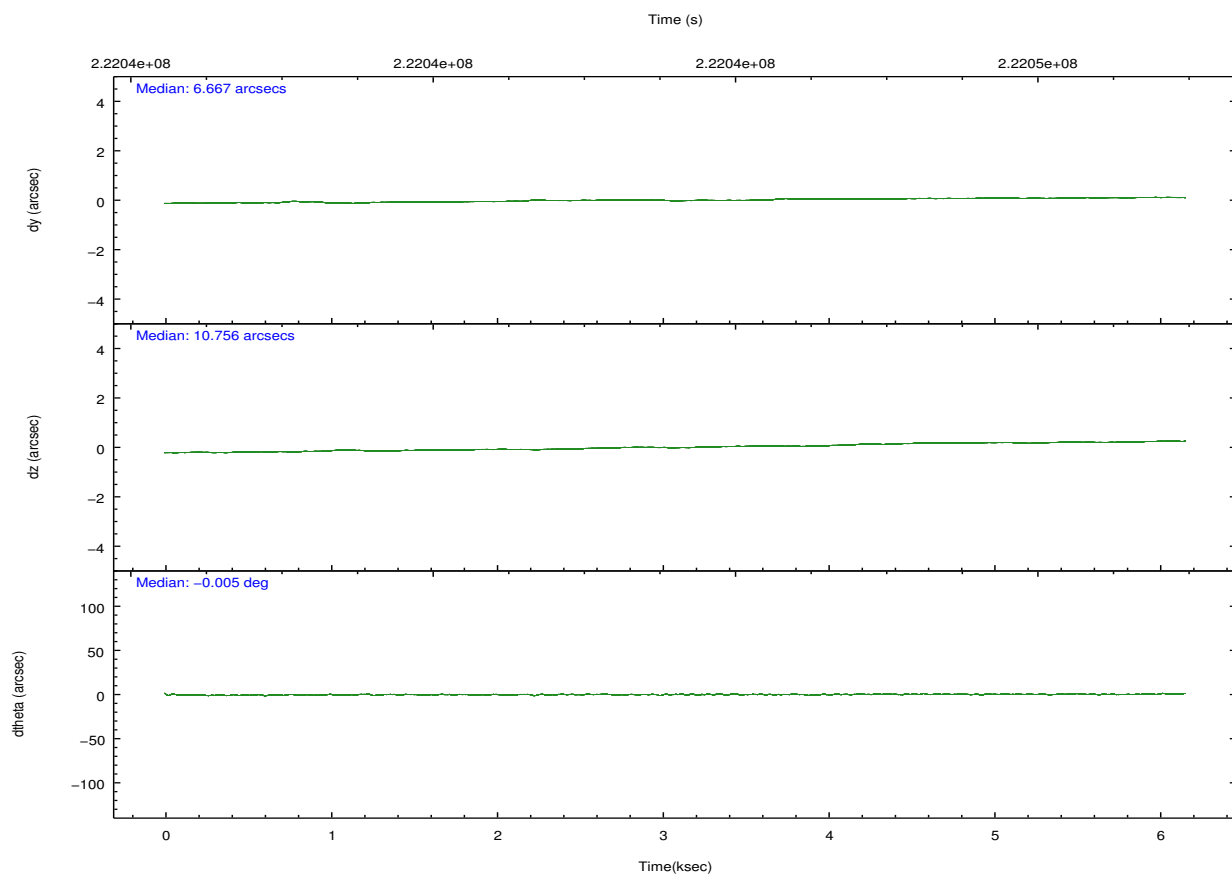
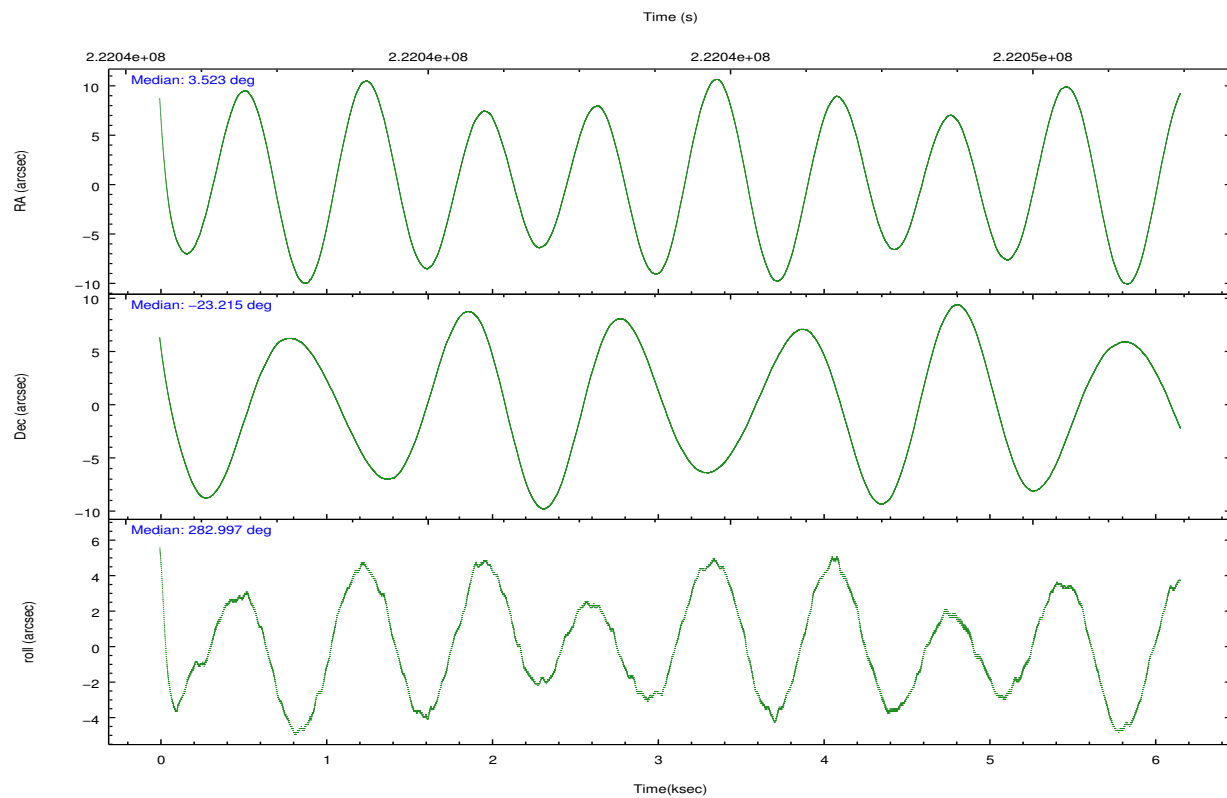


## 2.2 Compared Parameters

Parameter	Planned	Actual
Instrument	ACIS	ACIS
Detector	ACIS-235678	ACIS-235678
Grating	NONE	NONE
Data mode	VFAINT	VFAINT
Observation mode	POINTING	POINTING
[deg] Pointing RA	3.502628	3.523097236669241
[deg] Pointing Dec	-23.195544	-23.2152285126663
[deg] Pointing Roll	282.844470	283.0091636486983
[mm] SIM focus pos	-0.684267	-0.6828225247311905
[mm] SIM defocus	0	0.001444936568705701
[mm] SIM translation stage pos	-190.132523	-190.1425803651734
[mm] SIM translation stage offset	0	0.01005778216563158
[s] Observation start time (MET)	222040677.184000	222039648.06226
Observation start date	2005-01-13T21:56:53	2005-01-13T21:40:48
[s] Observation end time (MET)	222046677.184000	222047581.05012
Observation end date	2005-01-13T23:36:53	2005-01-13T23:53:01
Read mode	TIMED	TIMED

Parameter	Planned	Actual
Obspar format version number	7	7
Obspar file type	PREDICTED	ACTUAL
Obspar update status	NONE	UPDATED
Number of optional ACIS chips dropped	0	0
On-chip summing requested	N	N
Subarray requested	NONE	NONE
Alternating exposures requested	N	N
[s] Primary exposure time	0.000000	3.2

## 2.3 Aspect

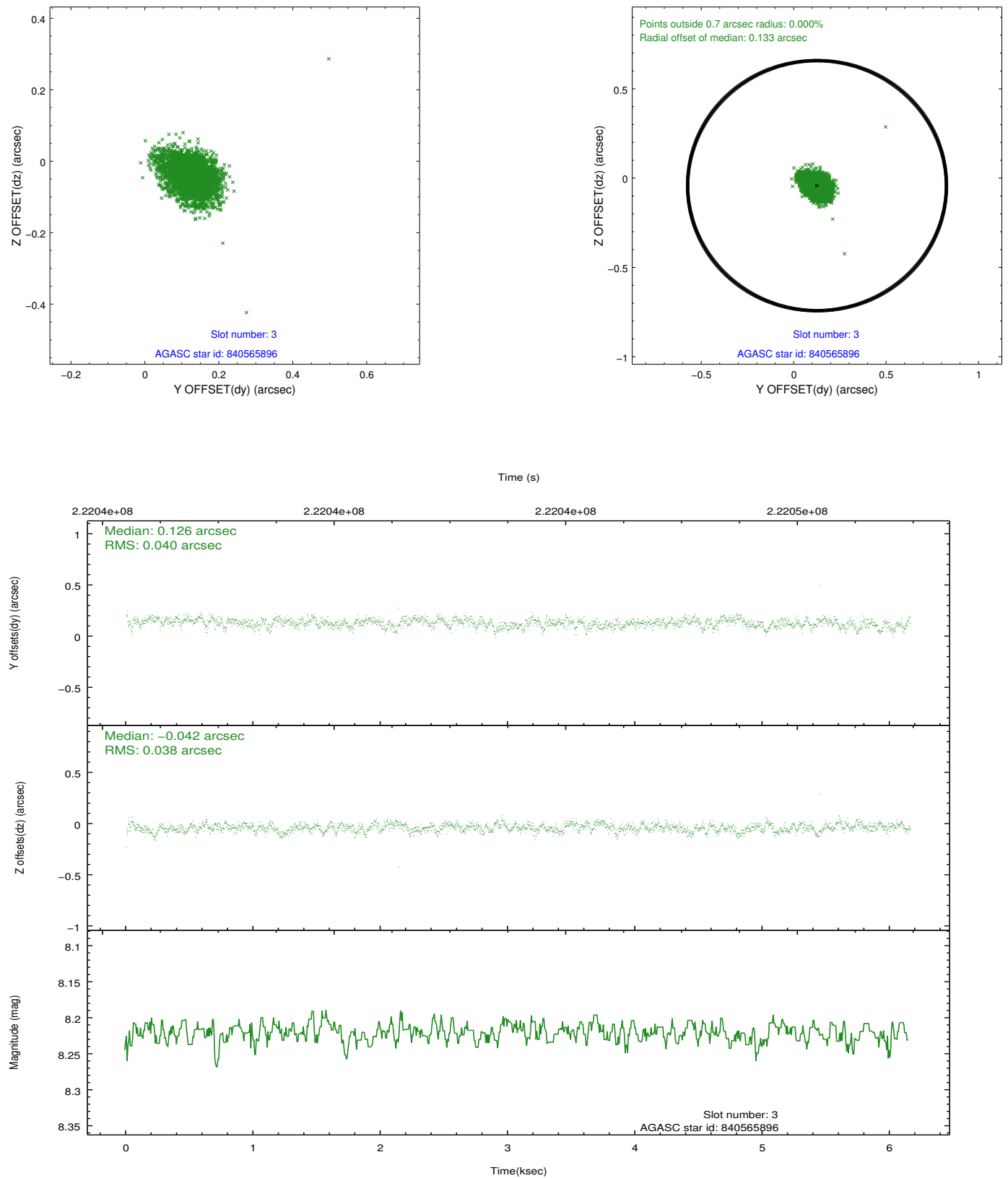


### Slot Statistics

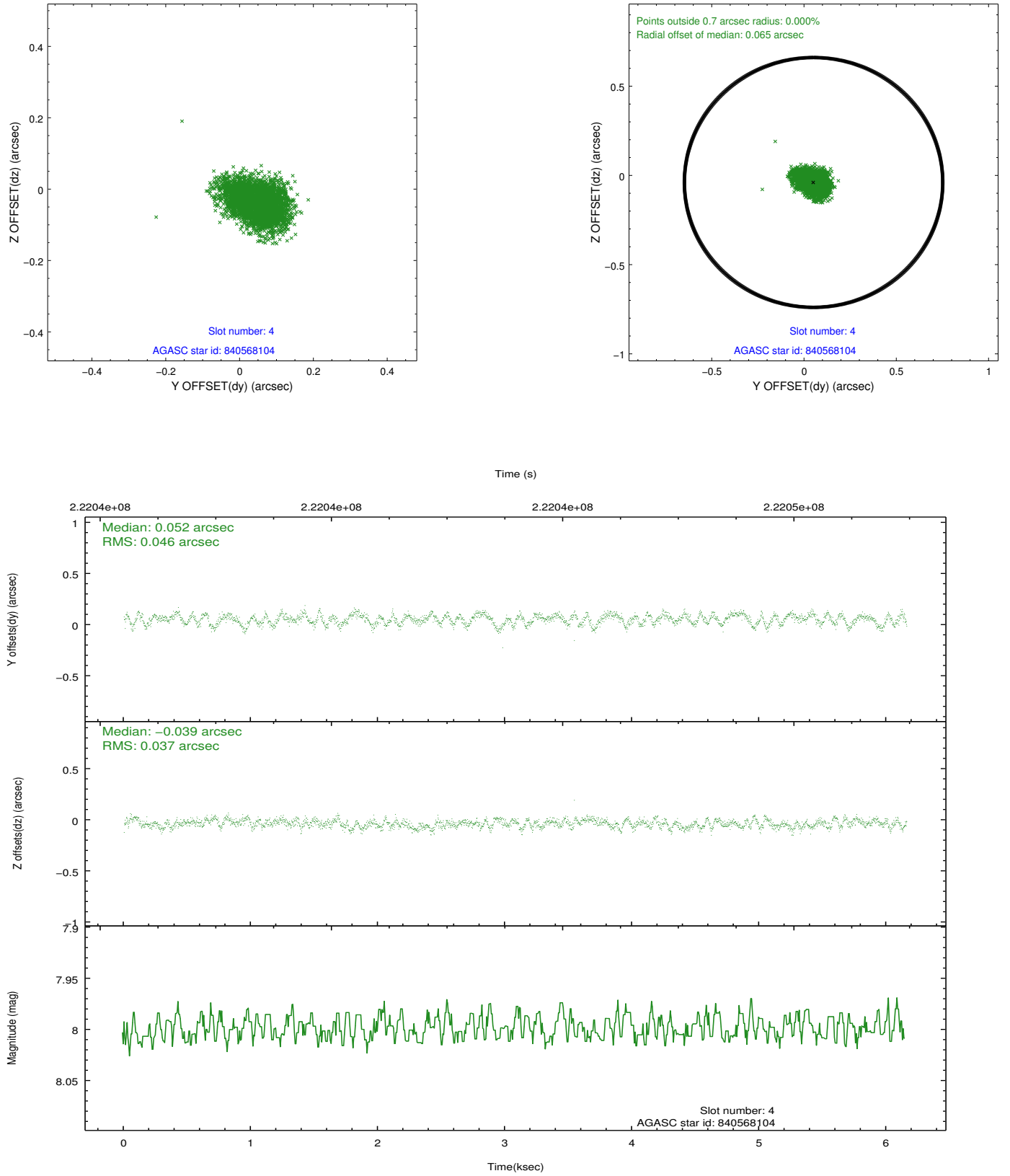
slot	status	id	mag	n_pts	med_dy	med_dz	dr1	dr2	ra	dec	mean_y	mean_z
0	FID	ACIS-S-2	7.10	1502	-0.056	-0.013	0.009	0.023	0.000000	0.000000	-759.43	-1732.01
1	FID	ACIS-S-4	7.20	1502	0.076	0.030	0.009	0.038	0.000000	0.000000	2153.51	175.58
2	FID	ACIS-S-5	7.23	1503	-0.052	-0.009	0.009	0.024	0.000000	0.000000	-1811.07	170.23
3	GUIDE	840565896	8.22	3004	0.126	-0.042	0.056	0.094	3.323646	-23.732514	1754.55	-1004.12
4	GUIDE	840568104	8.00	3005	0.052	-0.039	0.063	0.101	3.814856	-22.890920	-837.30	1253.11
5	GUIDE	840569088	8.00	3005	-0.054	0.074	0.053	0.092	2.901742	-23.632364	1097.09	-2281.51
6	GUIDE	840570320	8.75	2999	-0.087	-0.004	0.074	0.118	3.286958	-22.935511	-1070.39	-489.60
7	GUIDE	840565040	9.56	3000	-0.033	0.011	0.112	0.178	4.068979	-22.578007	-1745.96	2329.04

## 2.4 Star Slots

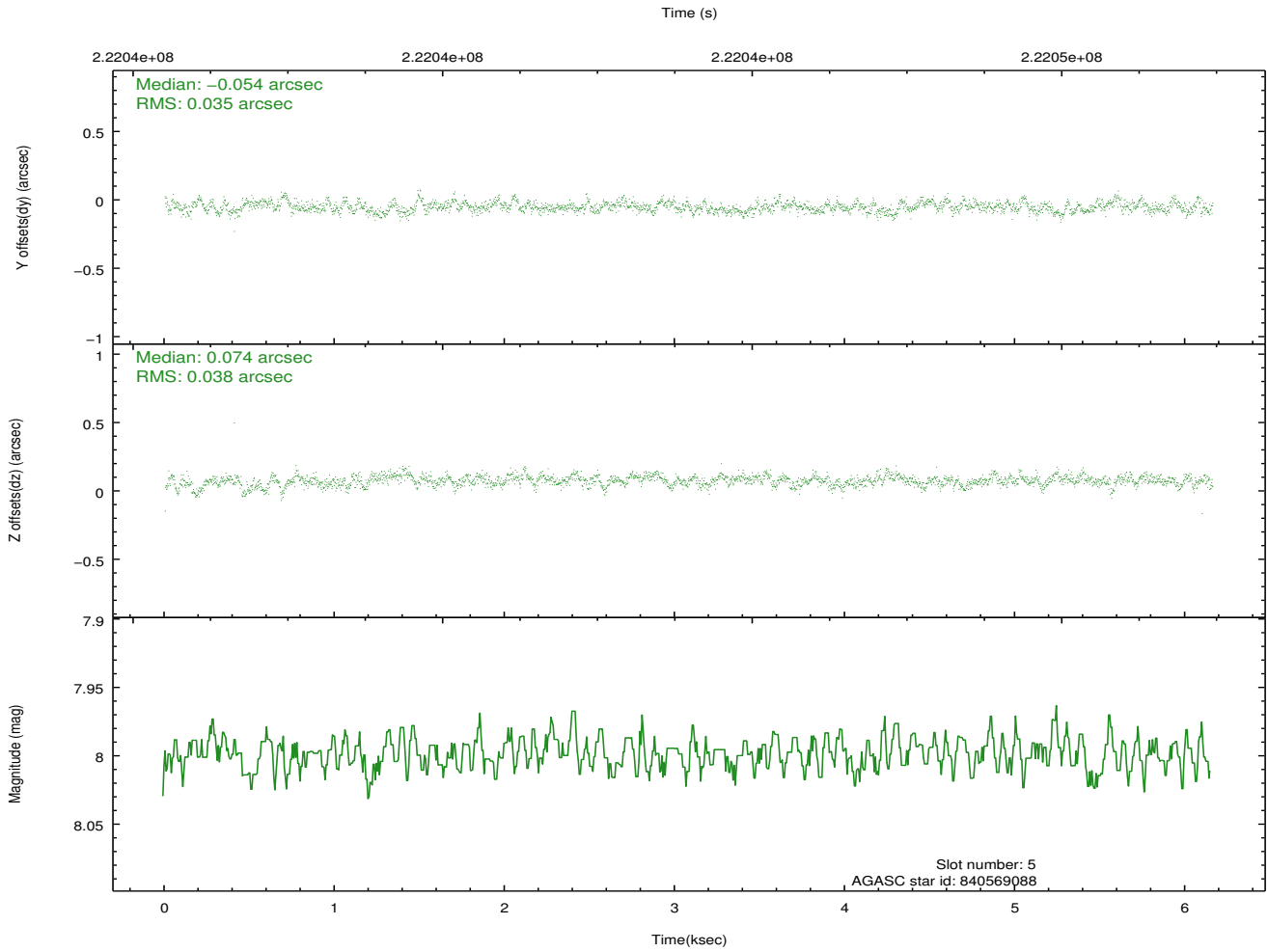
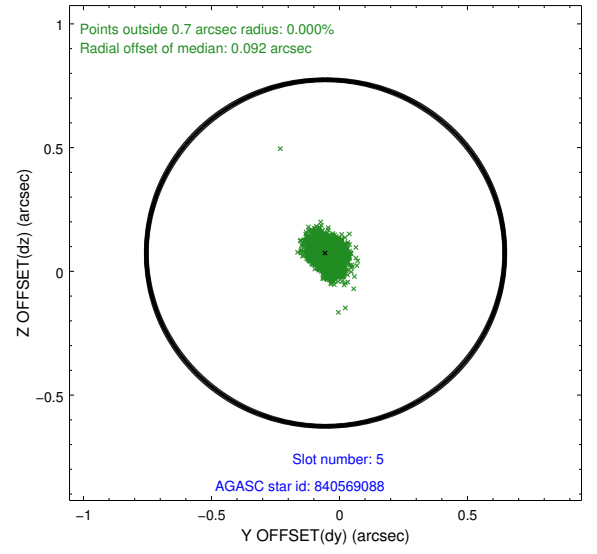
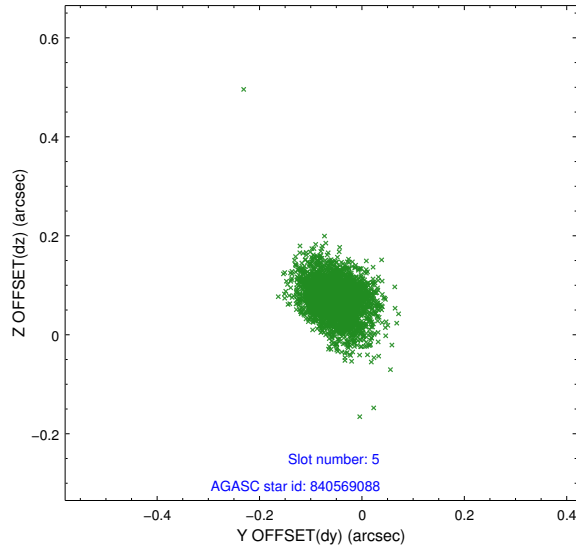
### 2.4.1 Slot 3



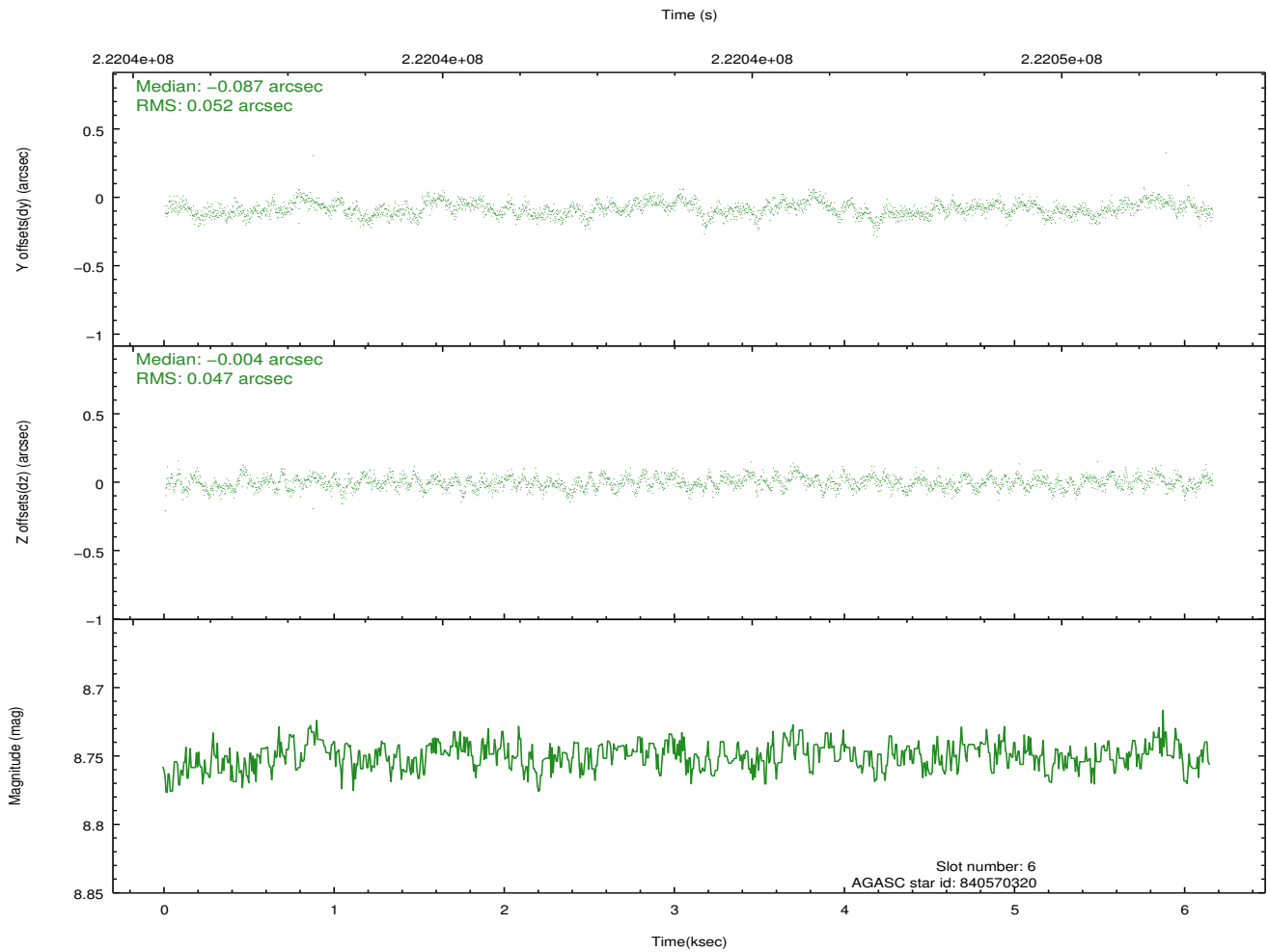
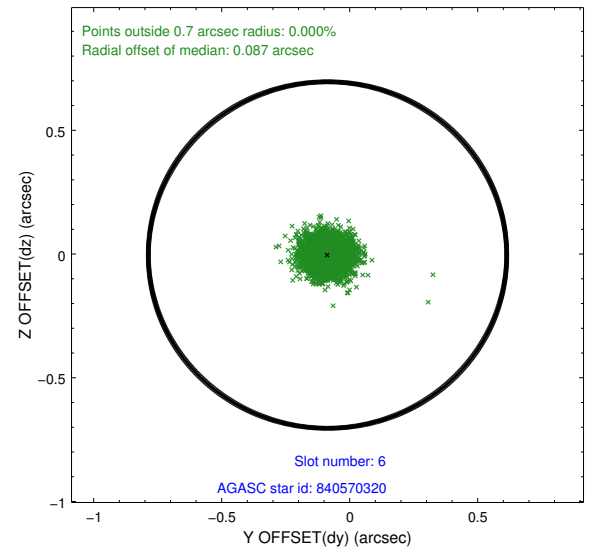
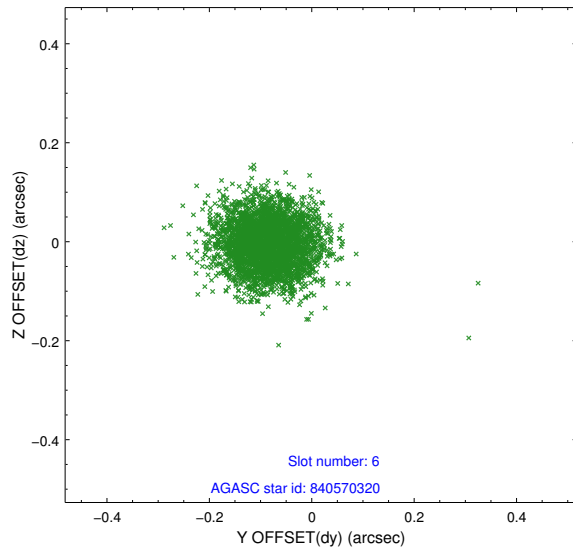
## 2.4.2 Slot 4



### 2.4.3 Slot 5

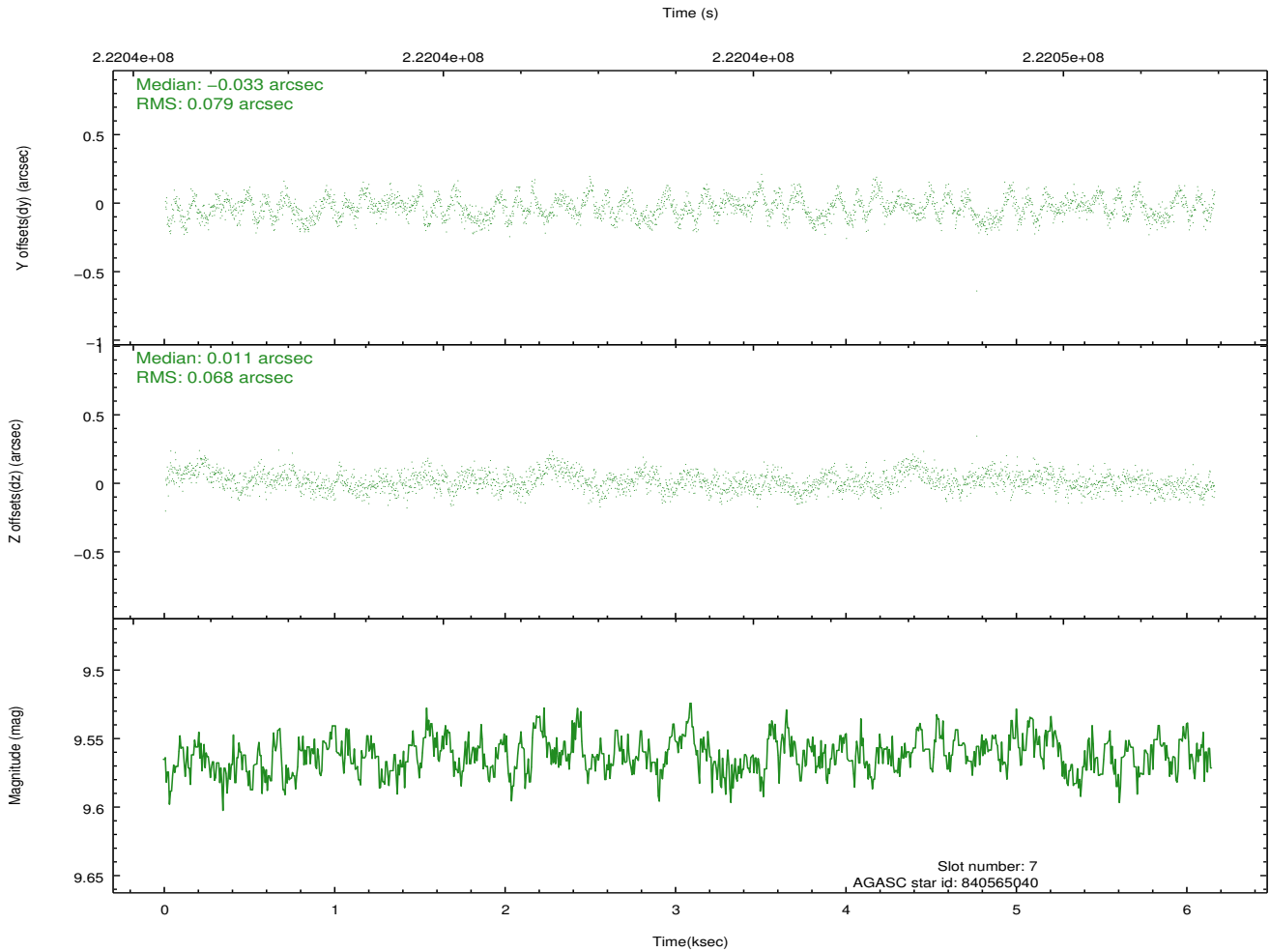
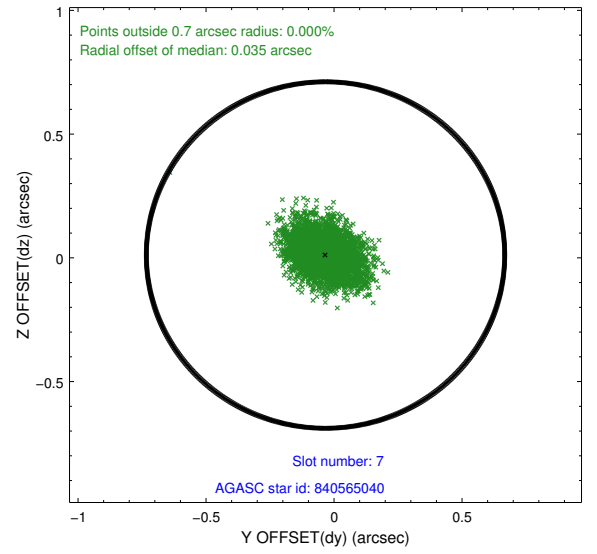
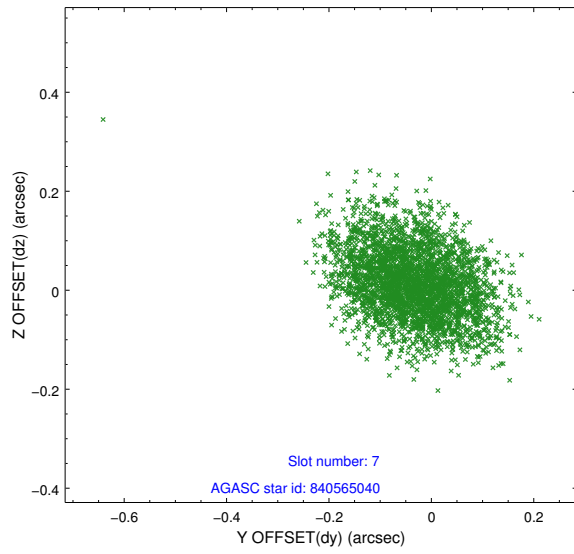


## 2.4.4 Slot 6



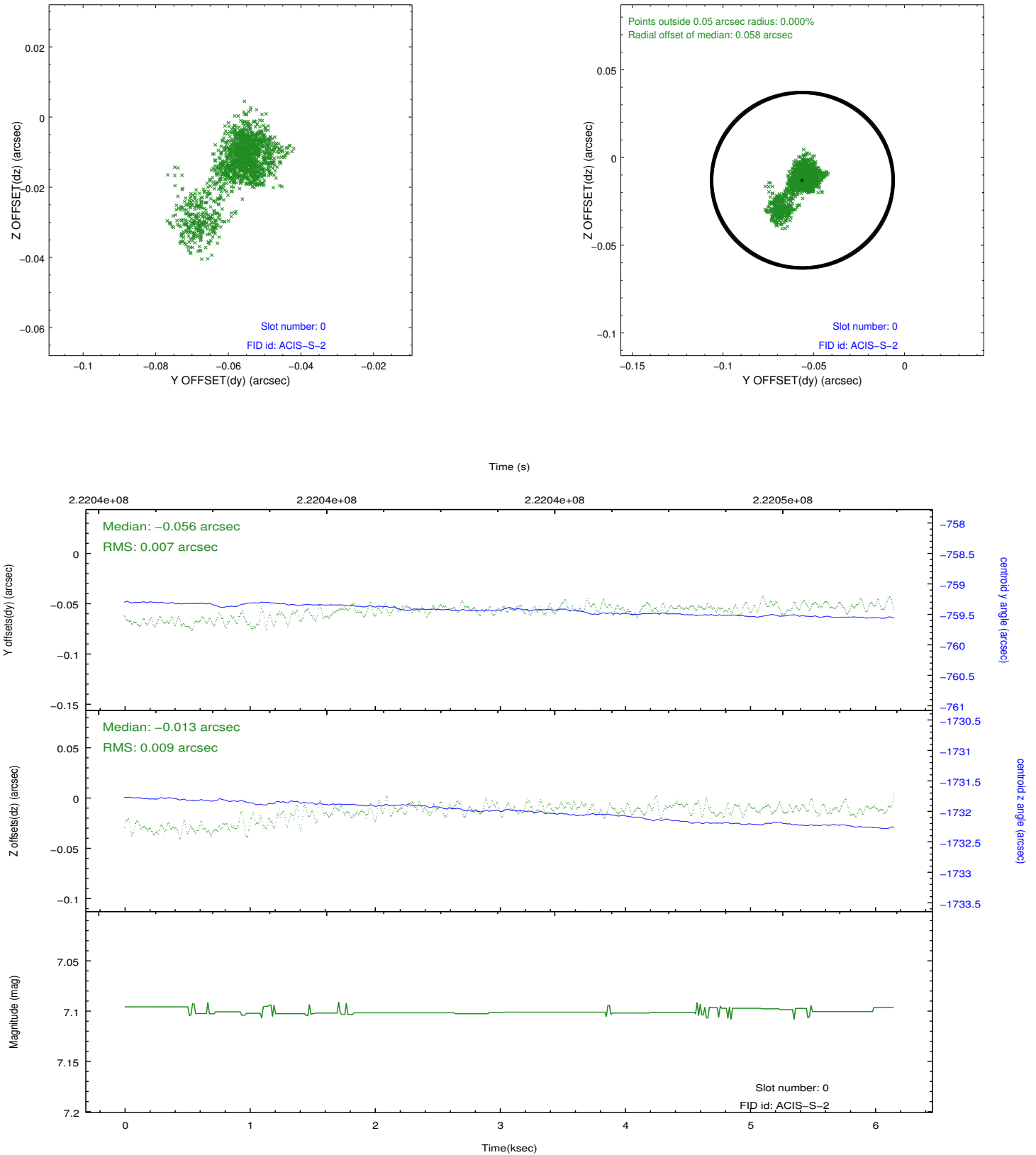


## 2.4.5 Slot 7

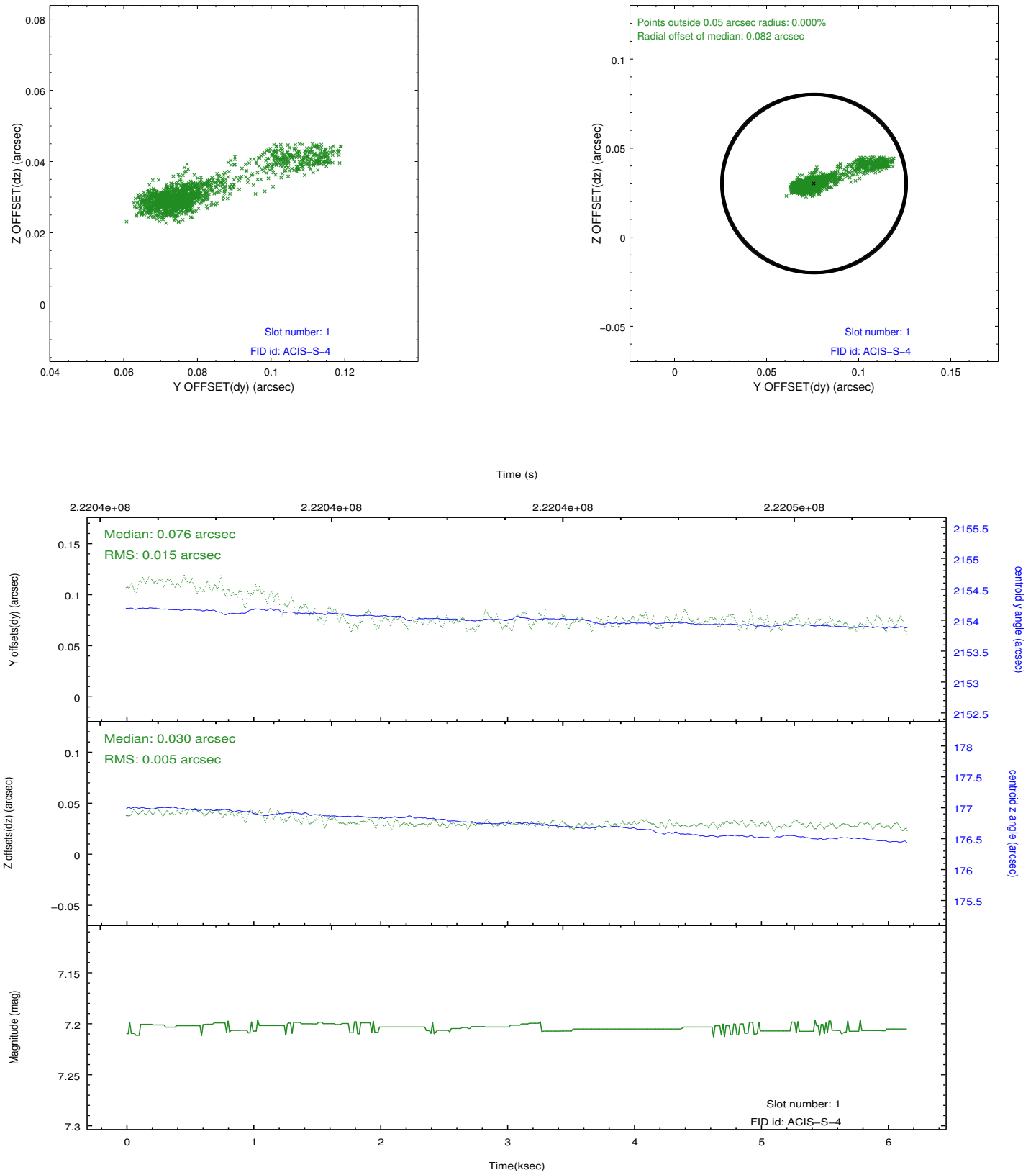


## 2.5 FID Slots

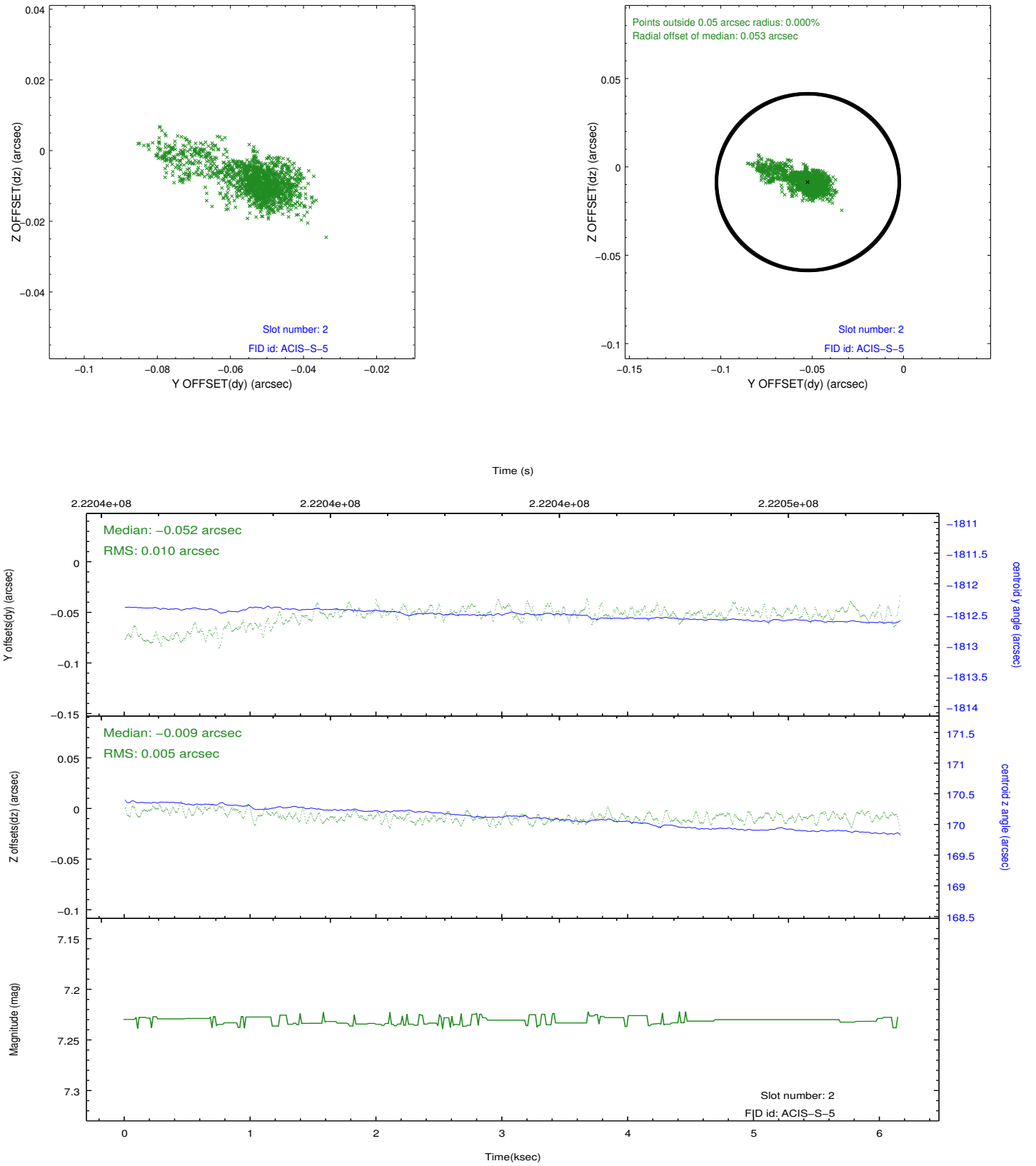
### 2.5.1 Slot 0



## 2.5.2 Slot 1



### 2.5.3 Slot 2



## A Summary

### A.1 Status

V&V Scientist	Jen Lauer
V&V Date (YYYY-MM-DD)	2013.01.08
V&V Edition	1
V&V Disposition and Status	OK
V&V Charge Time	6.092799

### A.2 Comments