

# V&V Reference Report

## L2 ASCDS Version : 7.6.7.2

Observation 5300 - L2 Version 001  
Chandra X-Ray Center

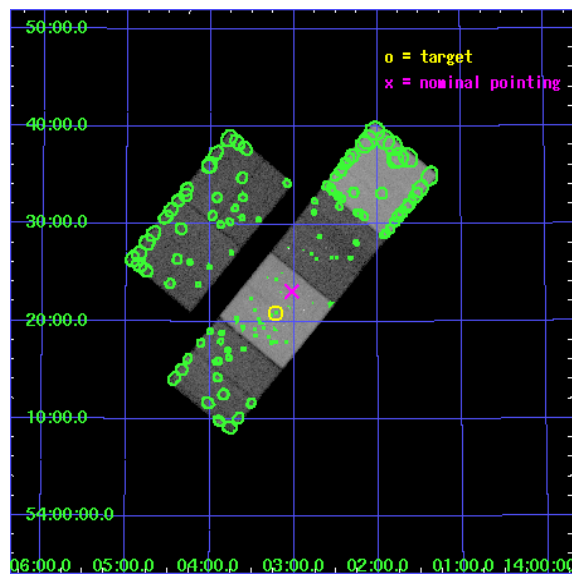
L2 Processing Date : May 31 2006

## Contents

<b>1</b>	<b>Front</b>	<b>2</b>
<b>2</b>	<b>OBI</b>	<b>3</b>
2.1	OBI . . . . .	3
2.1.1	Images . . . . .	3
2.1.2	Bias . . . . .	3
2.1.3	Parameters . . . . .	4
2.1.4	Events . . . . .	4
2.2	Compared Parameters . . . . .	5
2.3	Aspect . . . . .	6
2.4	Star Slots . . . . .	9
2.4.1	Slot 3 . . . . .	9
2.4.2	Slot 4 . . . . .	10
2.4.3	Slot 5 . . . . .	11
2.4.4	Slot 6 . . . . .	12
2.4.5	Slot 7 . . . . .	13
2.5	FID Slots . . . . .	14
2.5.1	Slot 0 . . . . .	14
2.5.2	Slot 1 . . . . .	15
2.5.3	Slot 2 . . . . .	16
<b>3</b>	<b>Point Sources</b>	<b>17</b>
<b>A</b>	<b>Summary</b>	<b>18</b>
A.1	Status . . . . .	18
A.2	Comments . . . . .	18

# 1 Front

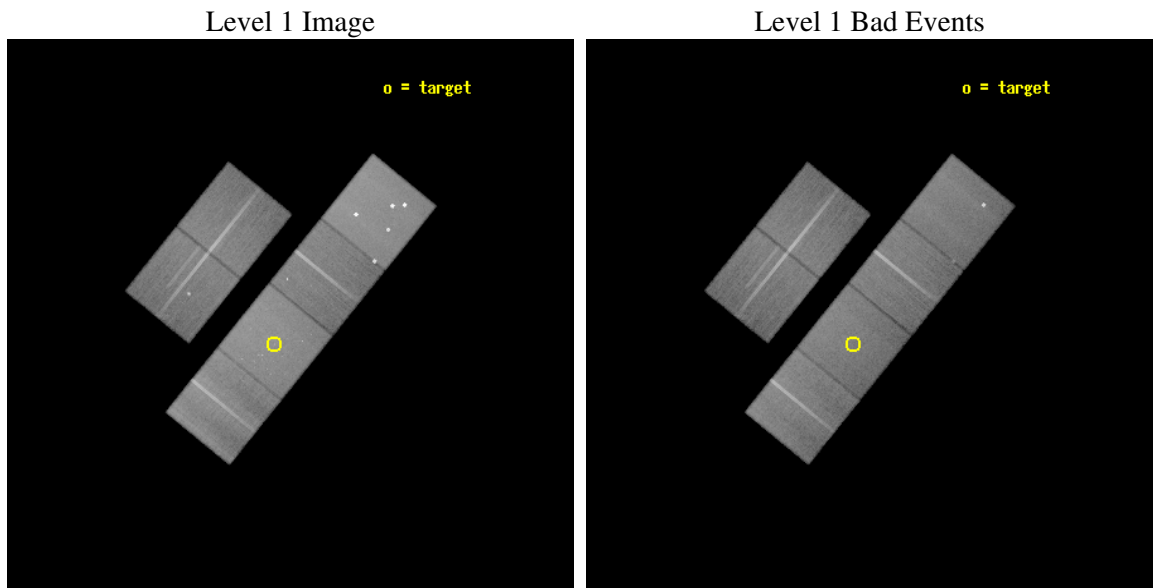
seq_num	600386
obs_id	5300
title	An Ultra-Deep Study of M101
observer	Dr. K. Kuntz
object	M101
dtcycle	0
cycle	P
ra_targ	210.80375
dec_targ	54.348778
ra_nom	210.75677375655
dec_nom	54.385381623481
roll_nom	129.04664948342
revision	2
ontime	52761.599803448
livetime	52093.500657515
ontime2	52758.358833164
ontime3	52755.117842883
ontime5	52761.599803448
ontime6	52755.117822975
ontime7	52761.599803448
ontime8	52761.599803448
l2events	552230



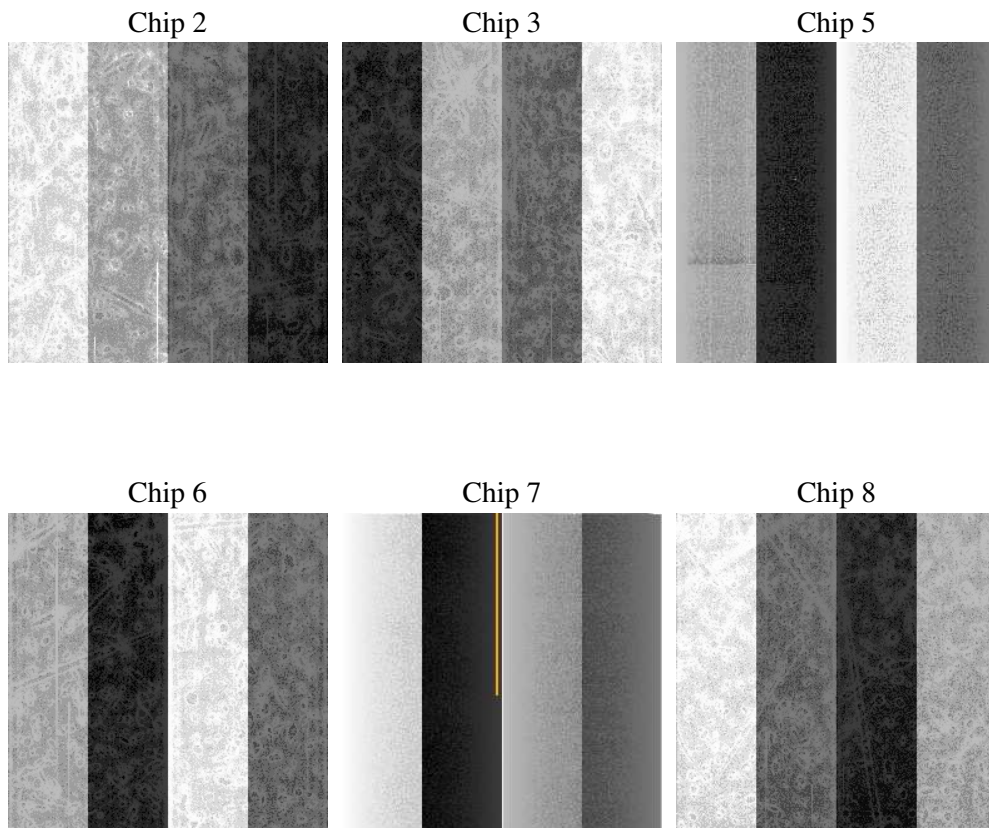
## 2 OBI

### 2.1 OBI

#### 2.1.1 Images



#### 2.1.2 Bias



### 2.1.3 Parameters

obi_num	0
ascdsver	7.6.7.2
caldsver	3.2.2
date	2006-05-31T14:33:45
revision	2

sched_exp_time	52617.000000
ontime	53547.917378753
ontime2	53544.67640847
ontime3	53541.435418189
ontime5	53547.917378753
ontime6	53538.194398075
ontime7	53547.917378753
ontime8	53547.917358816
l1events	2590360

### 2.1.4 Events

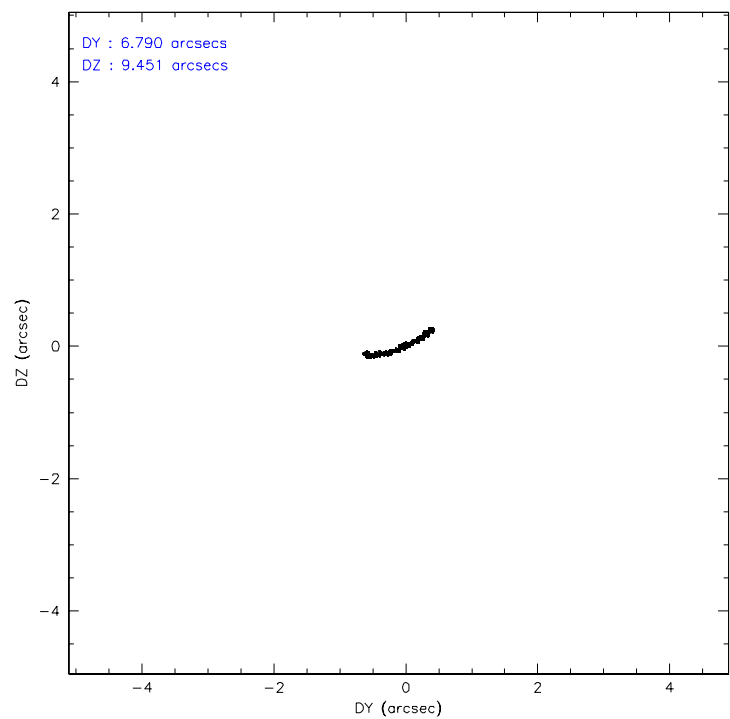
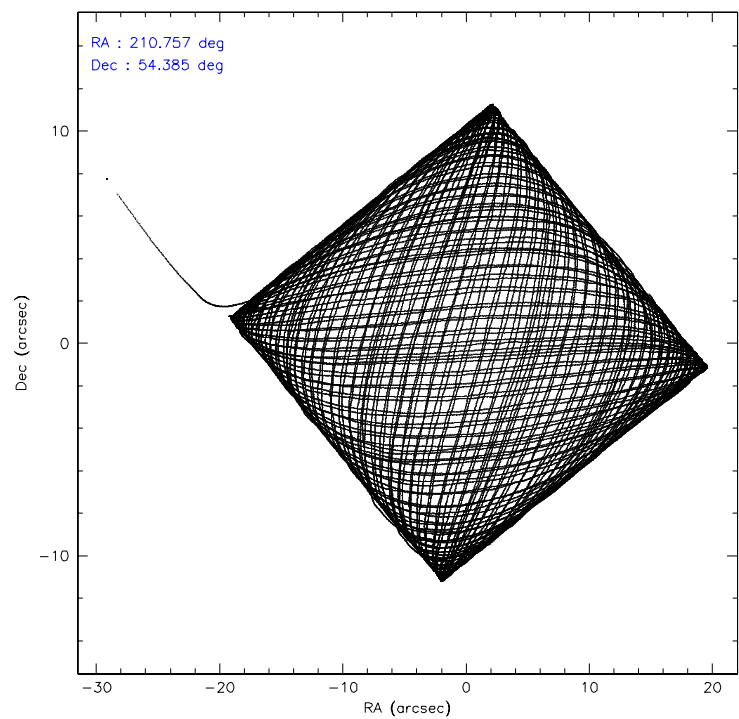
	ccd 2	ccd 3	ccd 5	ccd 6	ccd 7	ccd 8
level 1 events	355939	344057	578419	366997	494867	450081
rejected events	315348	301837	309590	322953	305259	356149
rejected %	88%	87%	53%	87%	61%	79%

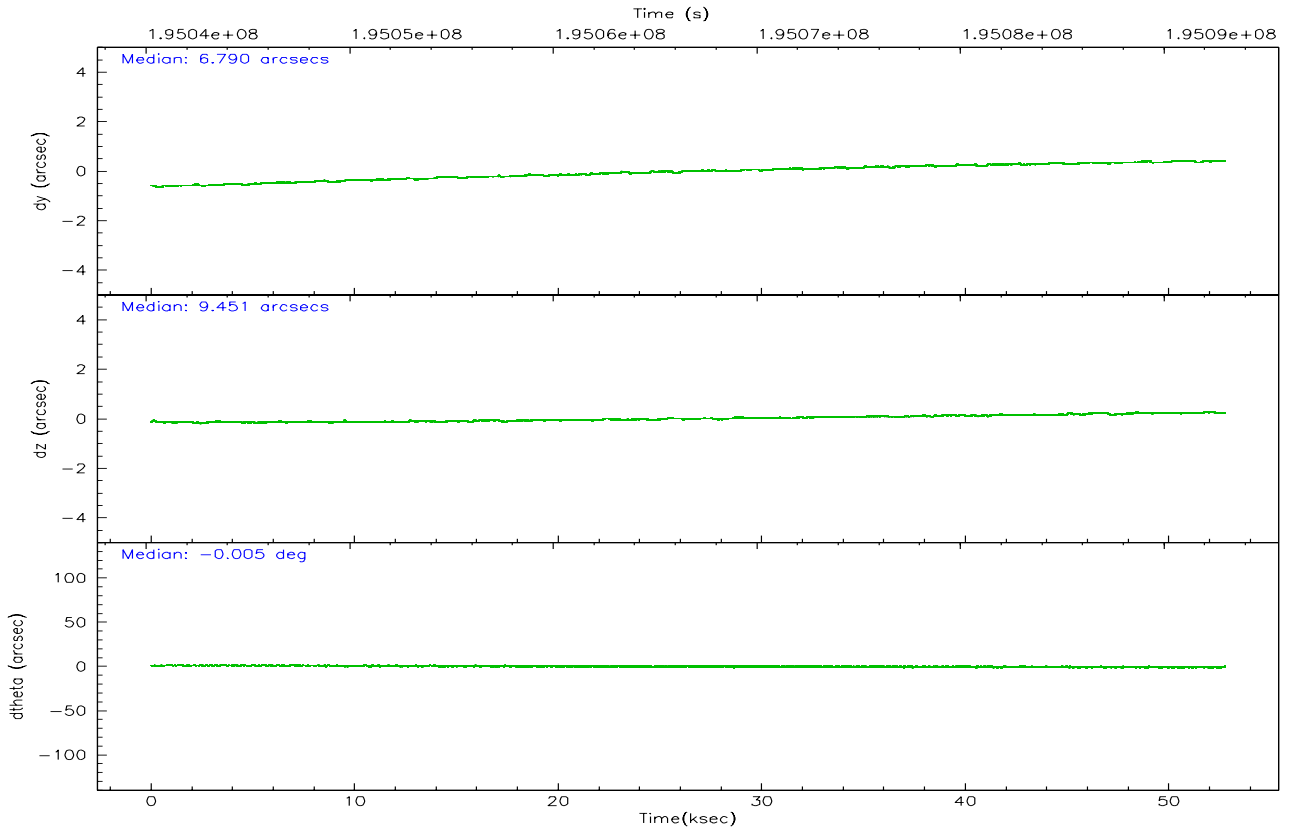
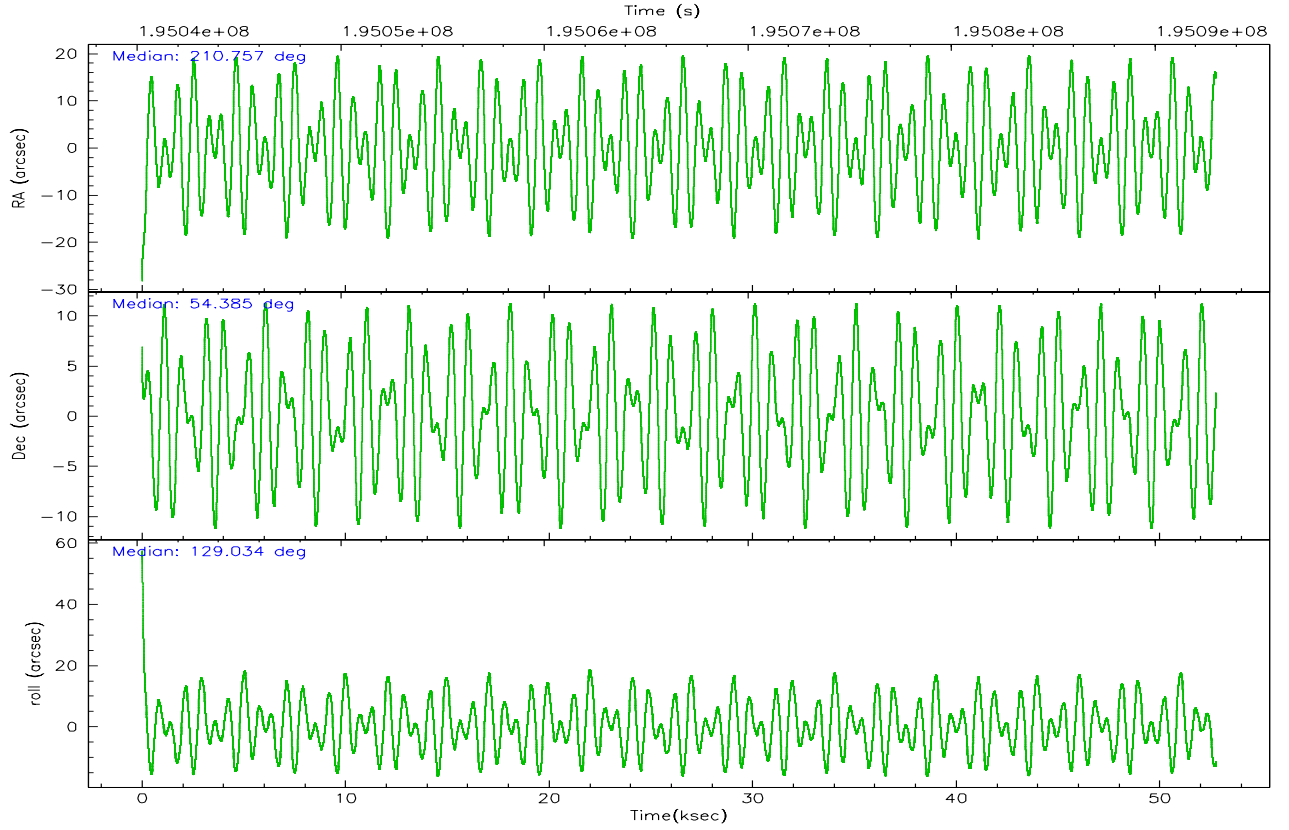
	ccd 2	ccd 3	ccd 5	ccd 6	ccd 7	ccd 8
grade 0 events	17854	19513	51368	18626	13975	30333
	5%	5%	8%	5%	2%	6%
grade 1 events	234	226	599	192	298	278
	0%	0%	0%	0%	0%	0%
grade 2 events	8531	7935	77110	8903	47691	20267
	2%	2%	13%	2%	9%	4%
grade 3 events	3905	4144	6130	4264	9842	10285
	1%	1%	1%	1%	1%	2%
grade 4 events	3835	4112	4824	4154	9651	9687
	1%	1%	0%	1%	1%	2%
grade 5 events	14189	15653	26681	16569	32020	21244
	3%	4%	4%	4%	6%	4%
grade 6 events	7119	7154	133411	8739	111196	24736
	2%	2%	23%	2%	22%	5%
grade 7 events	300272	285320	278296	305550	270194	333251
	84%	82%	48%	83%	54%	74%

## 2.2 Compared Parameters

Parameter	Planned	Actual	Parameter	Planned	Actual
Instrument	ACIS	ACIS	Obspar format version number	6	6
Detector	ACIS-235678	ACIS-235678	Obspar file type	PREDICTED	ACTUAL
Grating	NONE	NONE	Obspar update status	NONE	UPDATED
Data mode	VFAINT	VFAINT	On-chip summing requested	N	N
Observation mode	POINTING	POINTING	Subarray requested	NONE	NONE
Pointing RA	210.800634	210.756773756548	Alternating exposures requested	N	N
Pointing Dec	54.375990	54.38538162348081	Primary exposure time	0.000000	3.2
Pointing Roll	128.854360	129.0466494834186			
SIM focus pos (mm)	-0.684267	-0.6828225247311905			
SIM defocus (mm)	0	0.001444936568705701			
SIM translation stage pos (mm)	-190.132523	-190.1400660498719			
SIM translation stage offset (mm)	0	0.00754346686406393			
Observation start time	195040391.184000	195038946.69855			
Observation start date	2004-03-07T09:52:07	2004-03-07T09:29:06			
Observation end time	195093008.184000	195093539.22594			
Observation end date	2004-03-08T00:29:04	2004-03-08T00:38:59			
Read mode	TIMED	TIMED			

## 2.3 Aspect



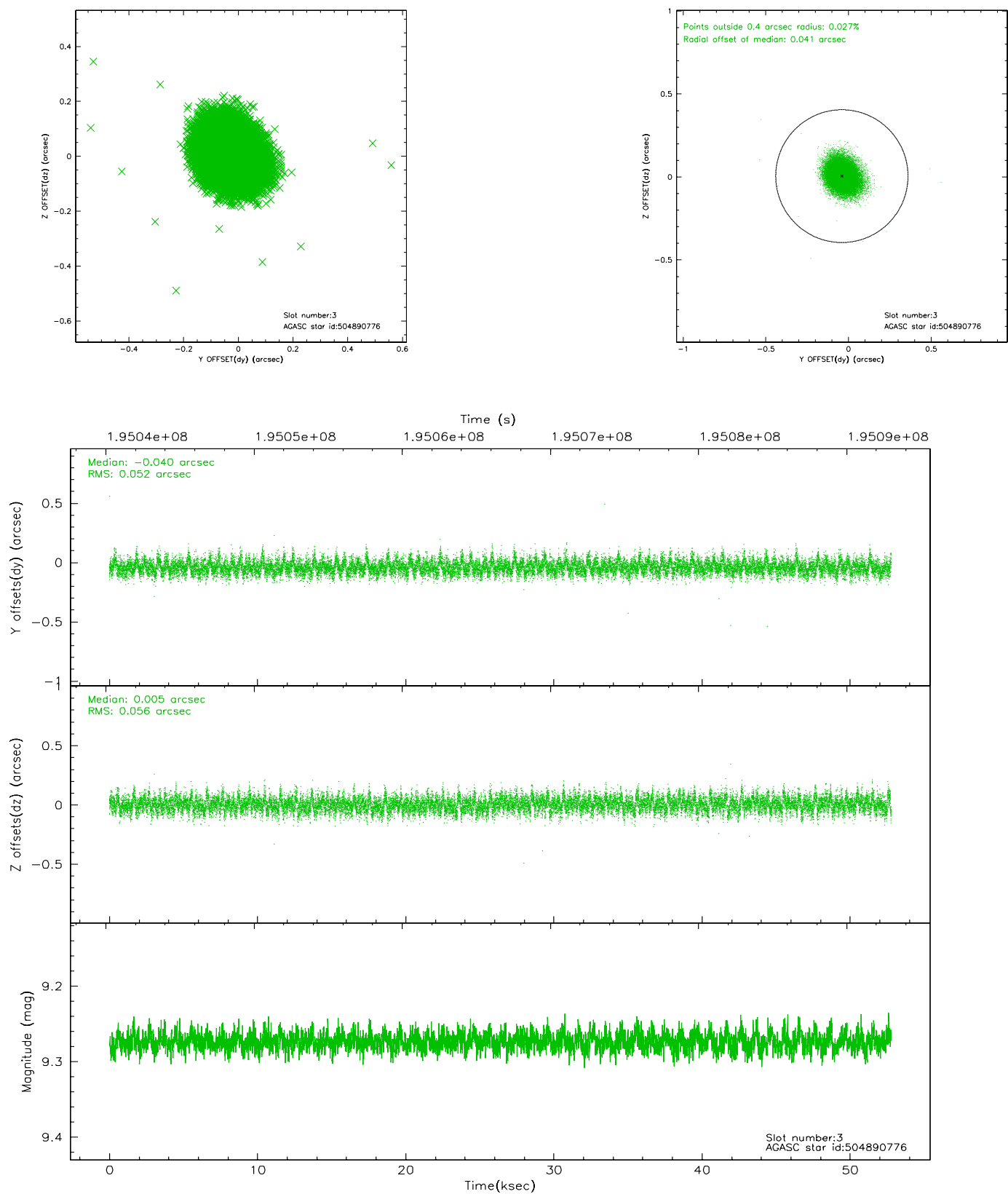


### Slot Statistics

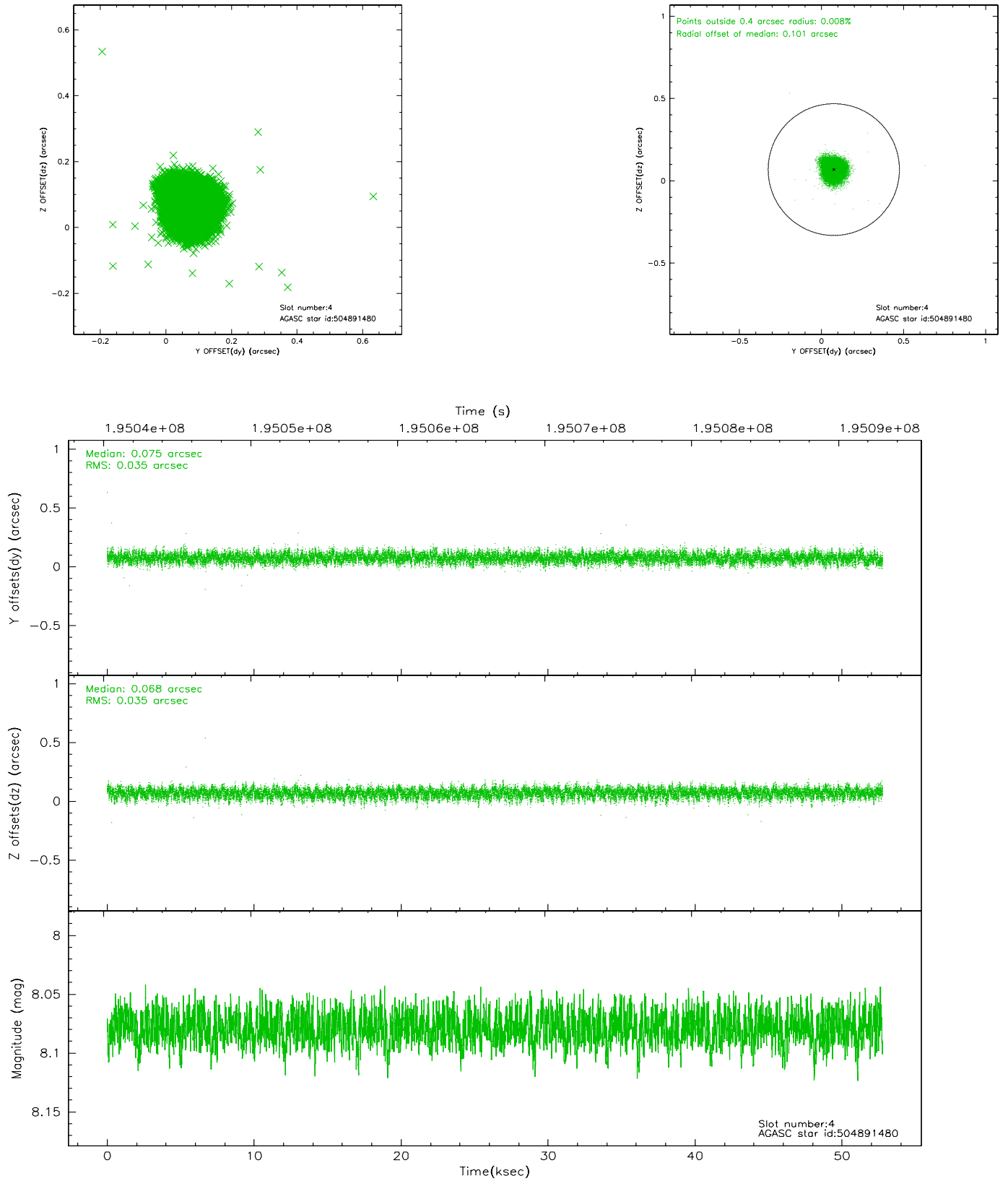
slot	status	id	mag	n_pts	med_dy	med_dz	dr1	dr2	ra	dec	mean_y	mean_z
0	FID	ACIS-S-2	7.10	12871	-0.035	-0.007	0.012	0.017	0.000000	0.000000	-759.50	-1730.72
1	FID	ACIS-S-4	7.21	12869	0.037	0.019	0.013	0.019	0.000000	0.000000	2153.83	177.85
2	FID	ACIS-S-5	7.23	12870	-0.032	-0.003	0.009	0.014	0.000000	0.000000	-1812.40	171.43
3	GUIDE	504890776	9.27	25725	-0.040	0.005	0.081	0.133	211.095934	54.816966	853.54	-1473.56
4	GUIDE	504891480	8.08	25738	0.075	0.068	0.052	0.084	210.708012	54.666096	934.85	-504.89
5	GUIDE	504893088	9.21	25734	0.002	-0.066	0.088	0.145	210.351715	54.364955	562.19	756.35
6	GUIDE	504894856	8.98	25731	-0.001	-0.053	0.099	0.156	209.819510	54.132689	627.15	2152.10
7	GUIDE	505292416	9.30	25732	-0.036	0.042	0.096	0.159	210.920759	55.040479	1708.63	-1693.32

## 2.4 Star Slots

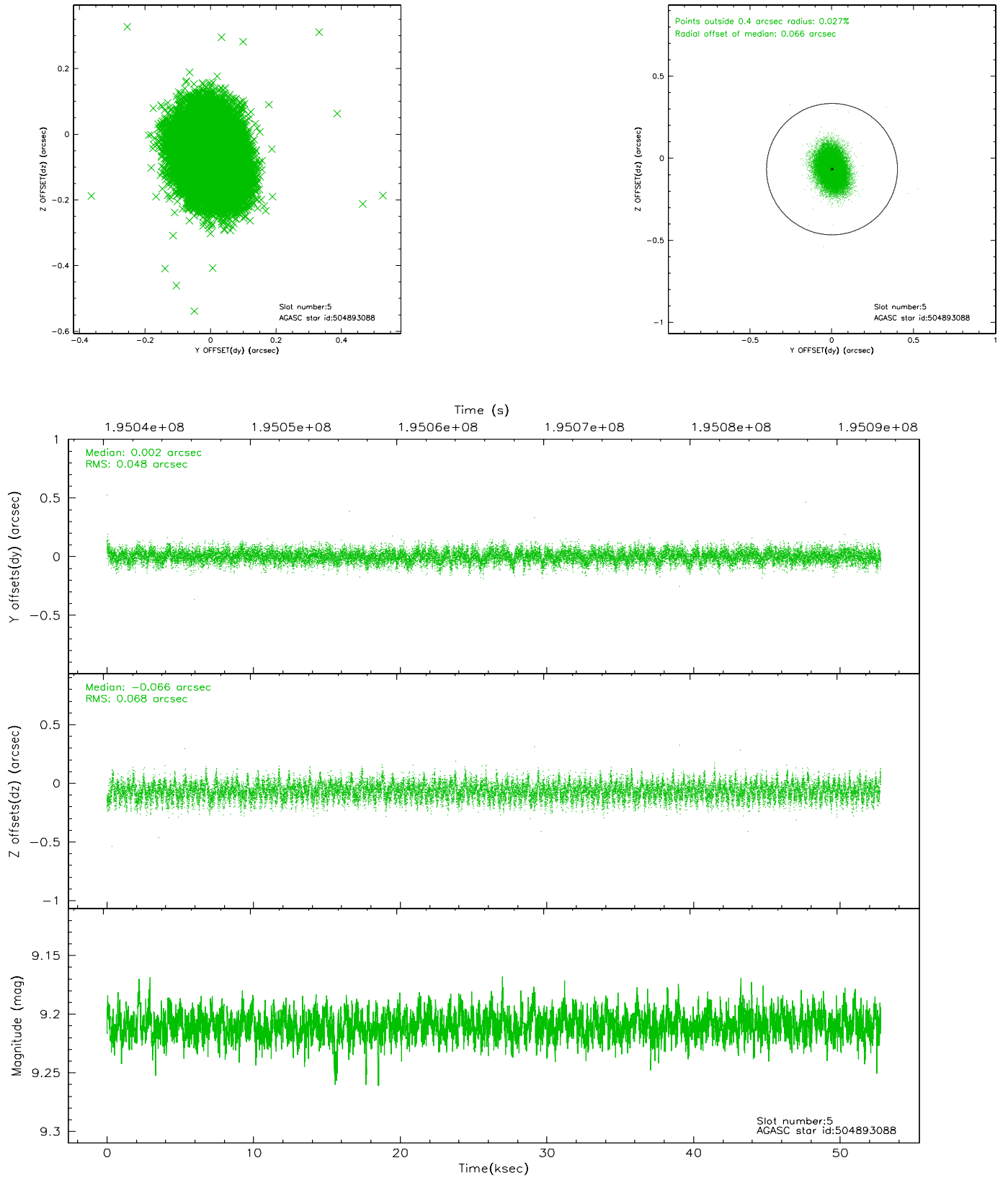
### 2.4.1 Slot 3



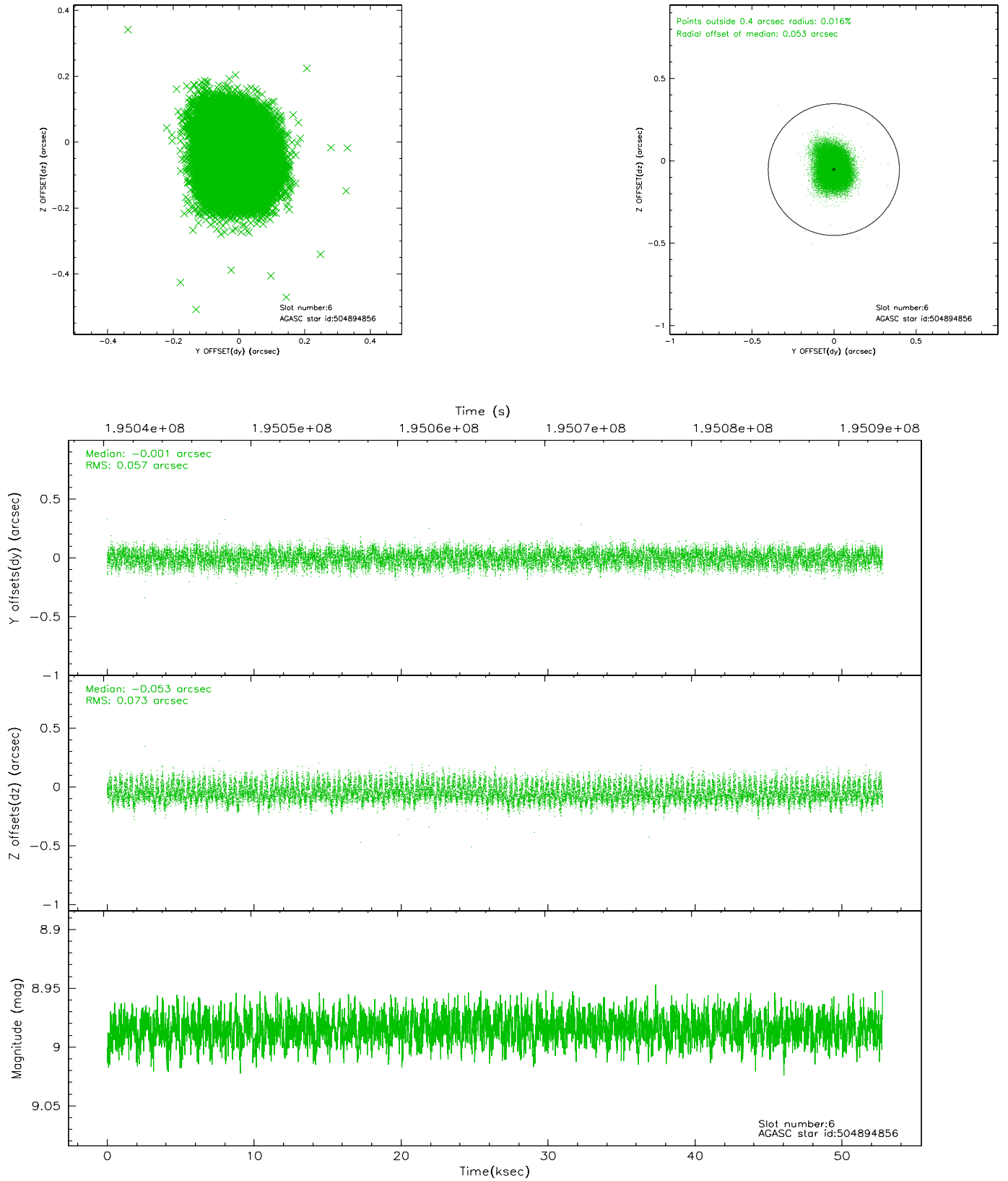
## 2.4.2 Slot 4



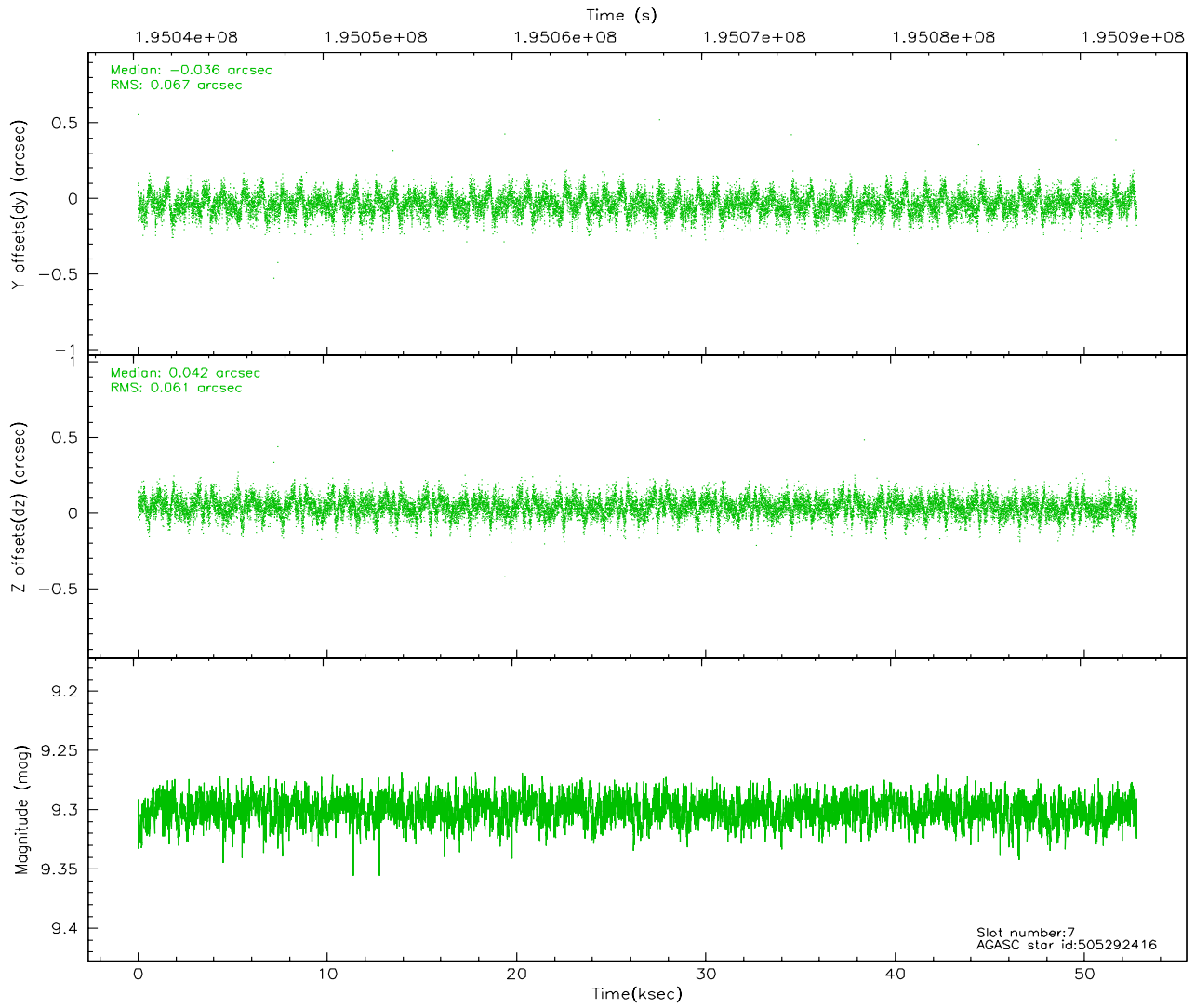
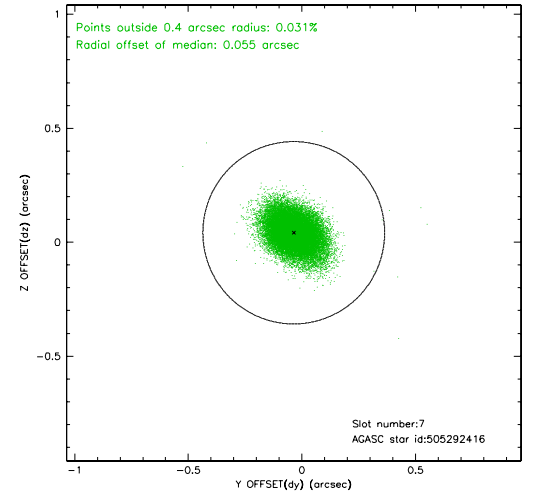
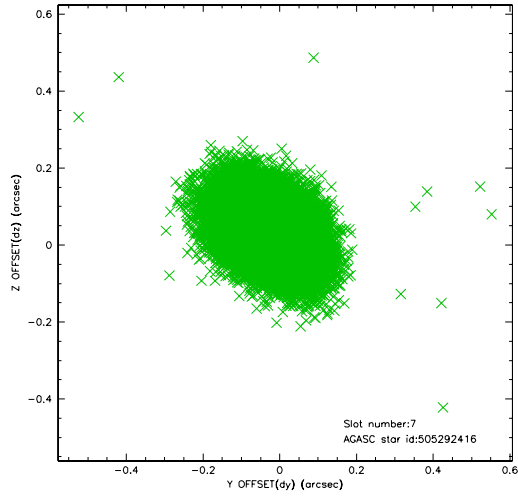
### 2.4.3 Slot 5



## 2.4.4 Slot 6

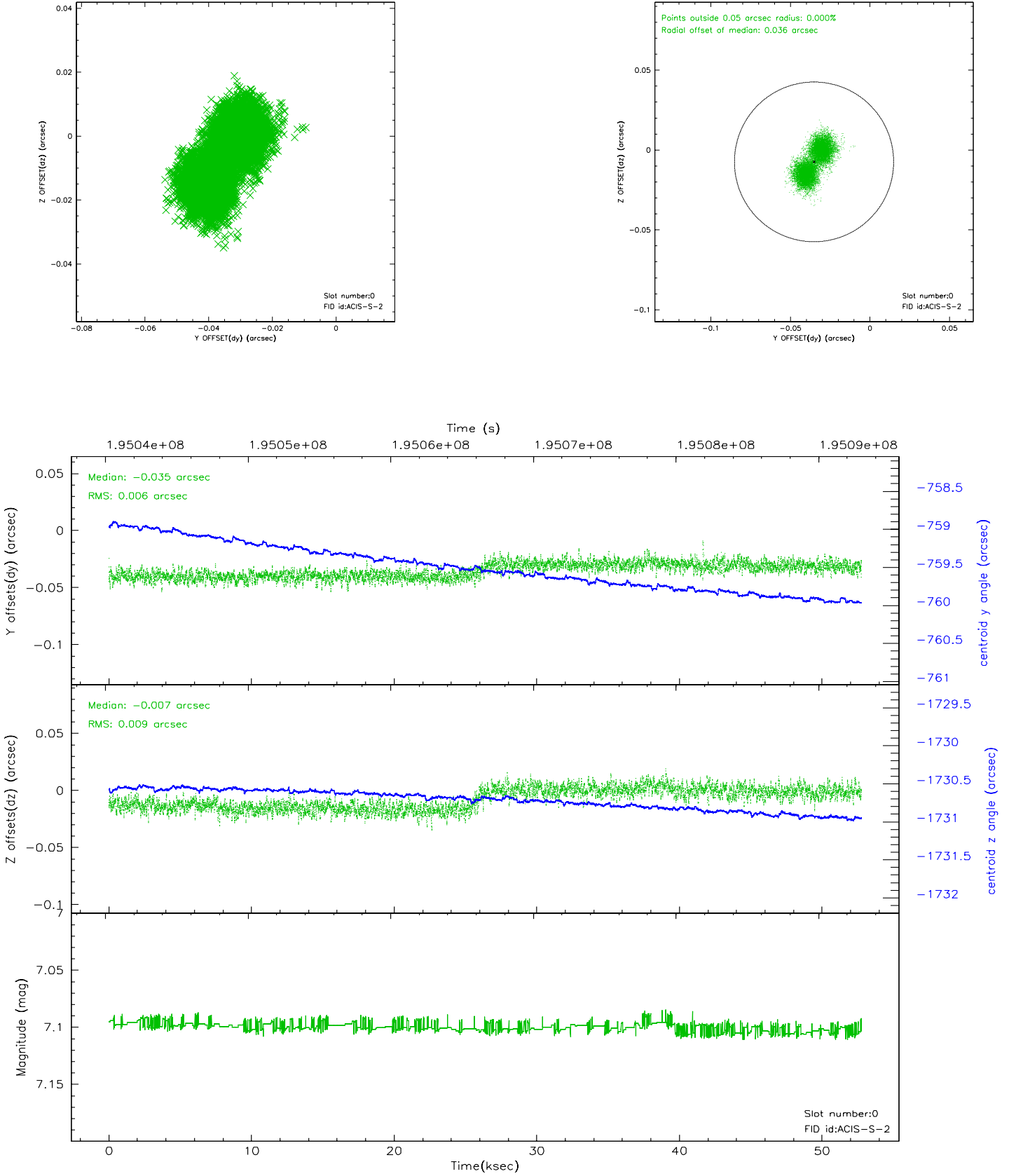


## 2.4.5 Slot 7

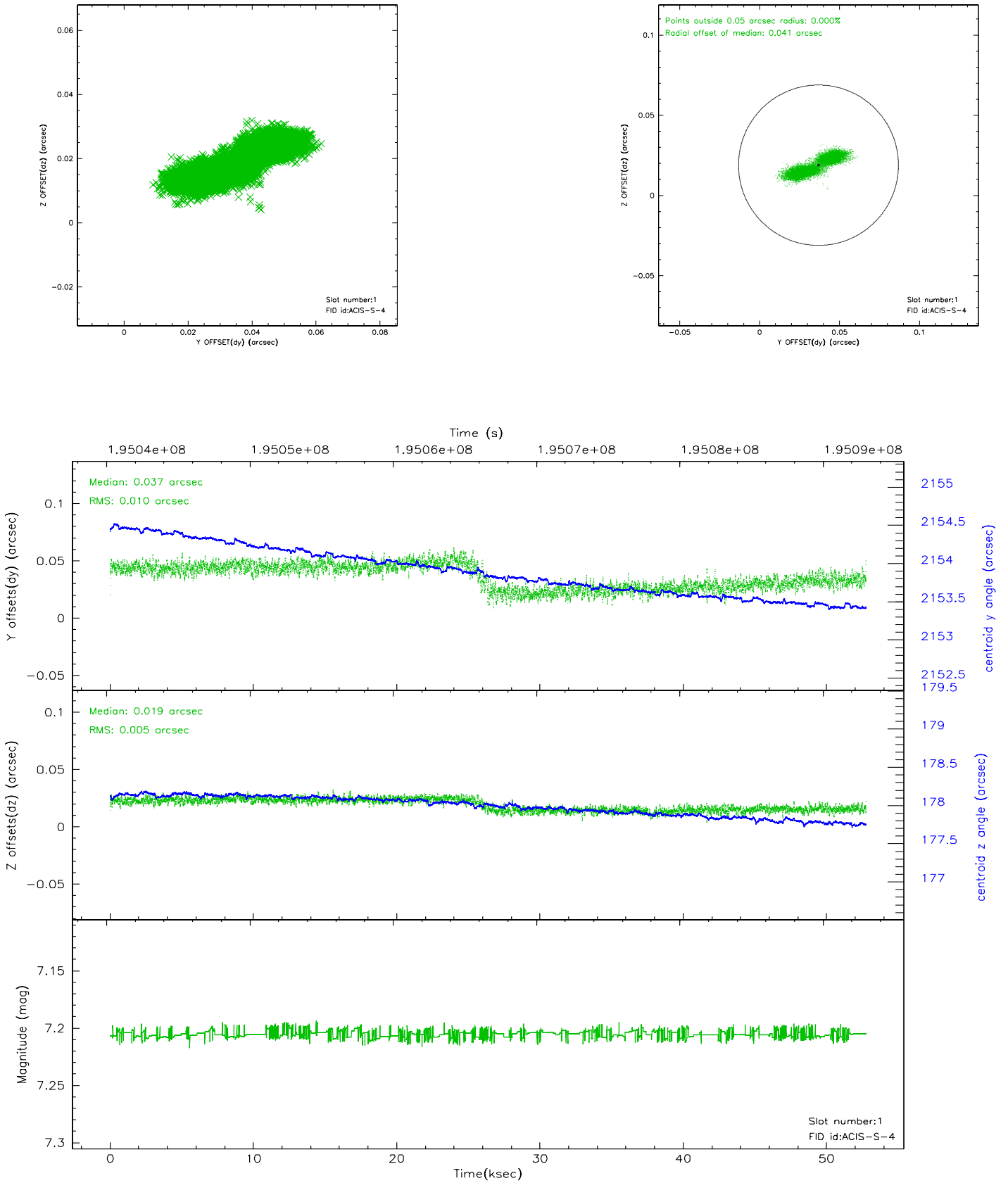


## 2.5 FID Slots

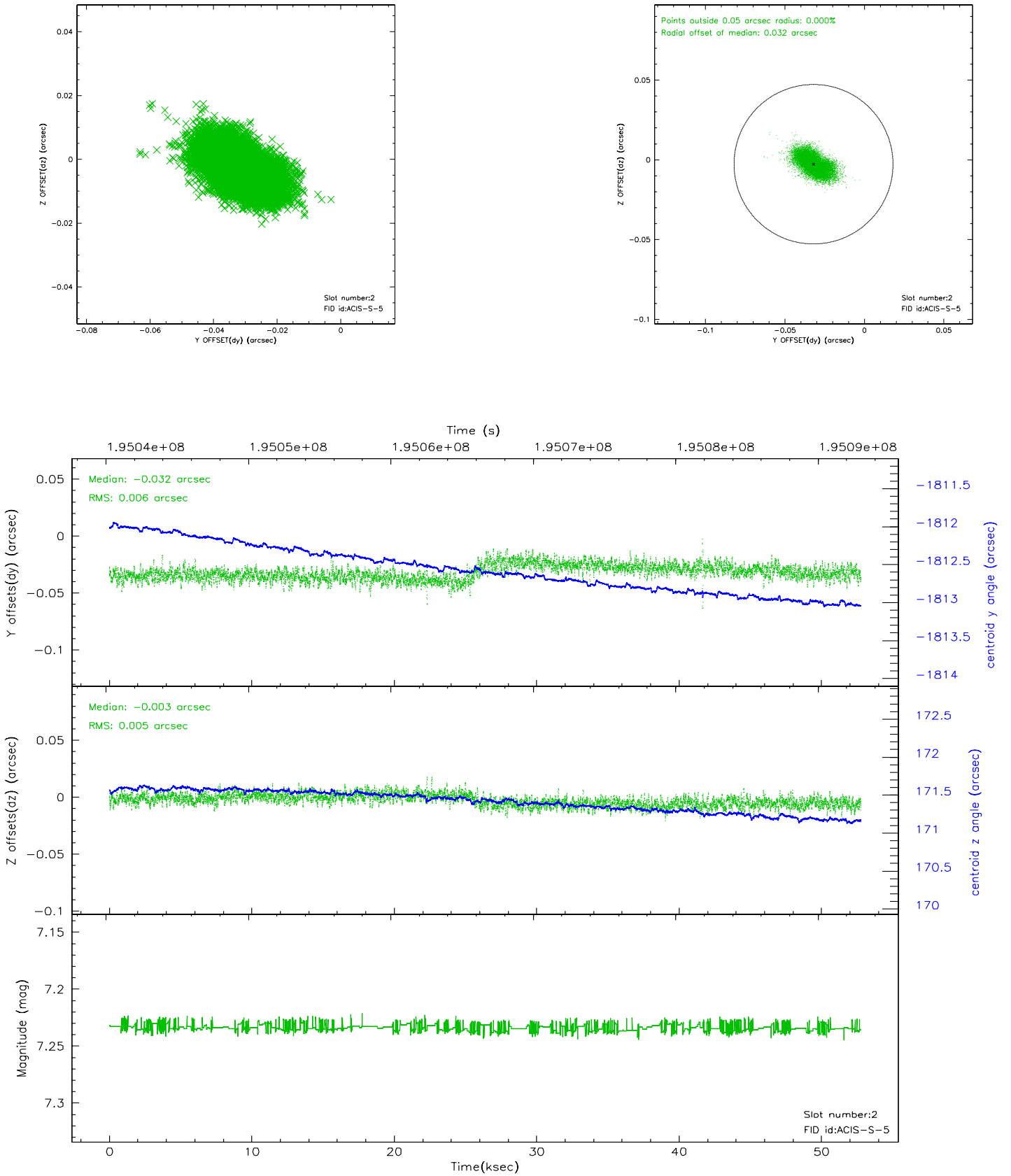
### 2.5.1 Slot 0



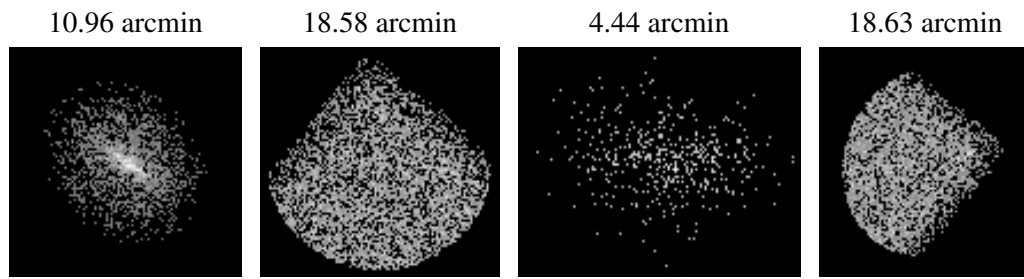
## 2.5.2 Slot 1



### 2.5.3 Slot 2



### 3 Point Sources



## A Summary

### A.1 Status

V&V Scientist	Jen Lauer
V&V Date (YYYY-MM-DD)	2006.05.31
V&V Edition	1
V&V Disposition and Status	OK
V&V Charge Time	52.761

### A.2 Comments