

V&V Reference Report

L2 ASCDS Version : 7.6.7.2

Observation 5296 - L2 Version 3
Chandra X-Ray Center

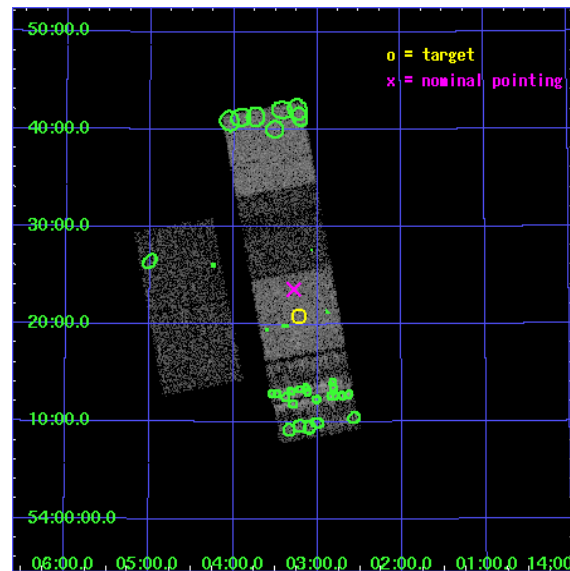
L2 Processing Date : Jan 14 2009

Contents

1	Front	2
2	OBI	3
2.1	OBI	3
2.1.1	Images	3
2.1.2	Bias	3
2.1.3	Parameters	4
2.1.4	Events	4
2.2	Compared Parameters	5
2.3	Aspect	6
2.4	Star Slots	9
2.4.1	Slot 3	9
2.4.2	Slot 4	10
2.4.3	Slot 5	11
2.4.4	Slot 6	12
2.4.5	Slot 7	13
2.5	FID Slots	14
2.5.1	Slot 0	14
2.5.2	Slot 1	15
2.5.3	Slot 2	16
3	Point Sources	17
A	Summary	18
A.1	Status	18
A.2	Comments	18

1 Front

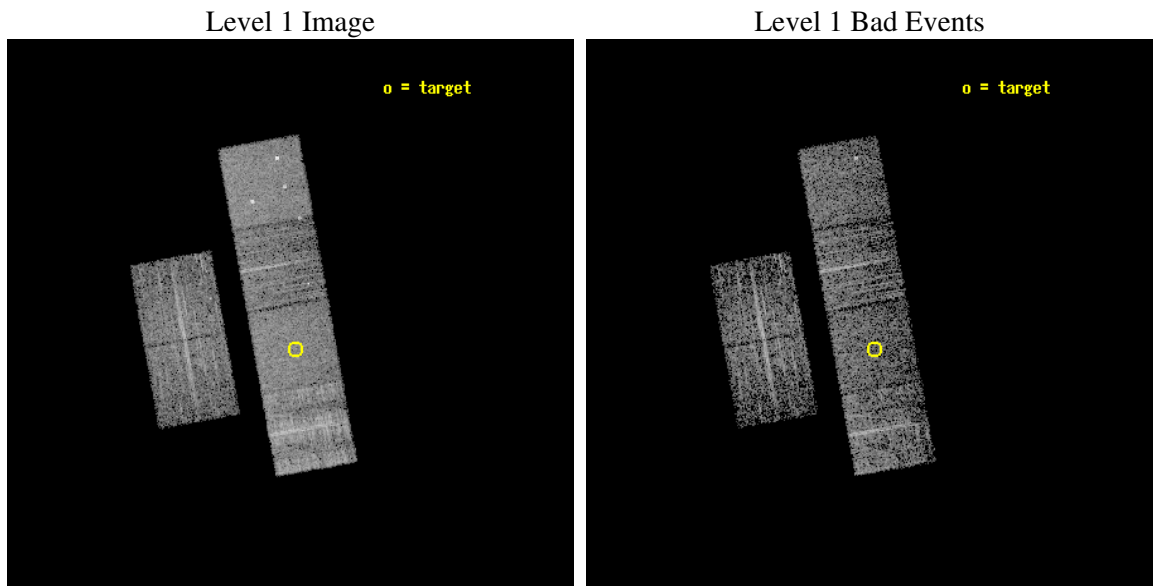
seq_num	600386
obs_id	5296
title	An Ultra-Deep Study of M101
observer	Dr. K. Kuntz
object	M101
dtcycle	0
cycle	P
ra_targ	210.80375
dec_targ	54.348778
ra_nom	210.82058182182
dec_nom	54.393460501993
roll_nom	79.742971590708
revision	3
ontime	3228.7999879718
livetime	3187.9149783741
ontime2	3228.7999879718
ontime3	3228.7999879718
ontime5	3228.7999879718
ontime6	3228.7999879718
ontime7	3228.7999879718
ontime8	3228.7999879718
l2events	43439



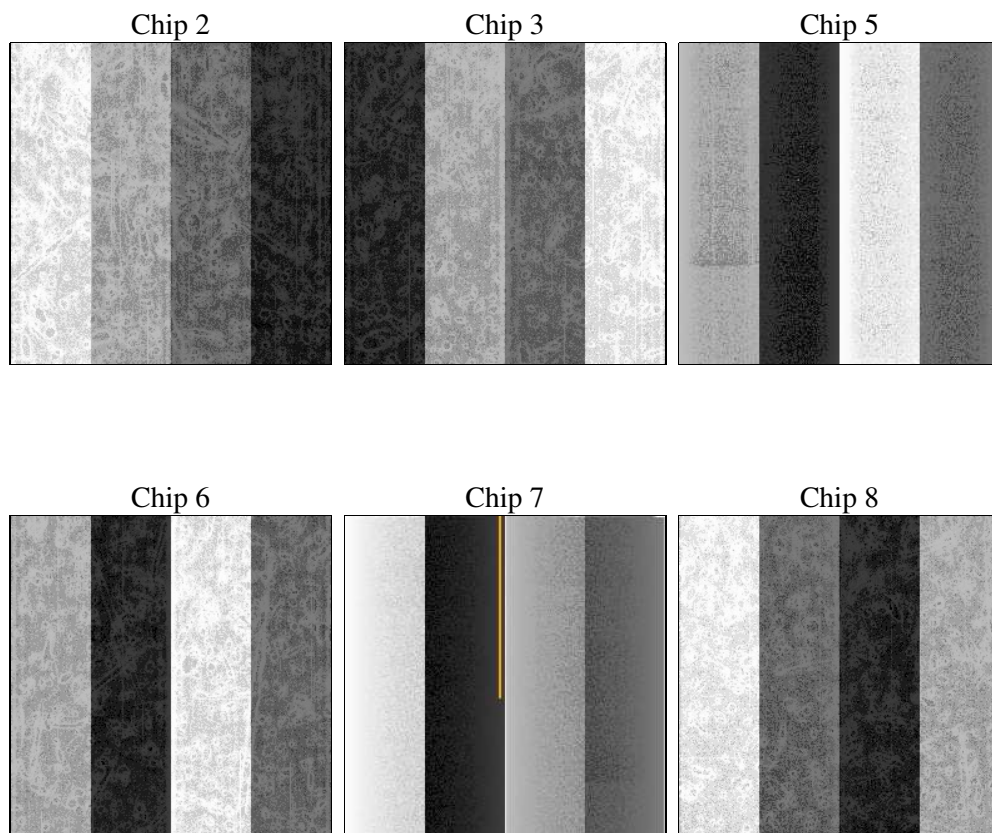
2 OBI

2.1 OBI

2.1.1 Images



2.1.2 Bias



2.1.3 Parameters

obi_num	0
ascdsver	7.6.11.10
caldbver	3.5.1
date	2009-01-14T03:25:39
revision	3

sched_exp_time	61270.000000
ontime	3228.7999879718
ontime2	3228.7999879718
ontime3	3228.7999879718
ontime5	3228.7999879718
ontime6	3228.7999879718
ontime7	3228.7999879718
ontime8	3228.7999879718
l1events	173663

2.1.4 Events

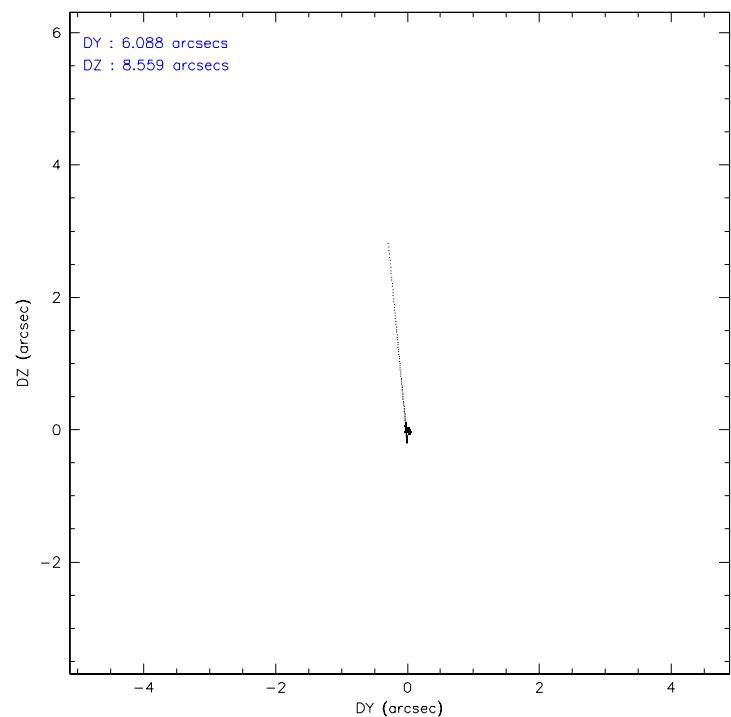
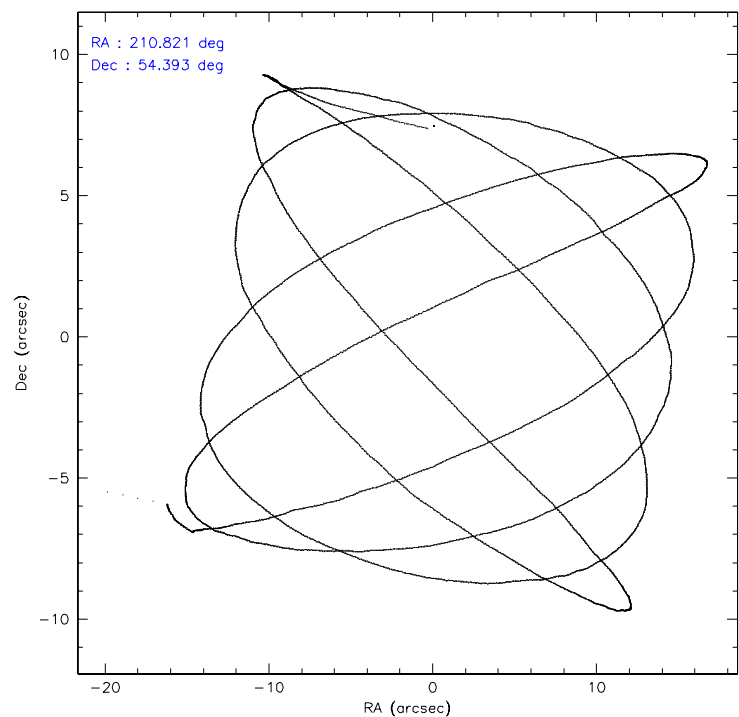
	ccd 2	ccd 3	ccd 5	ccd 6	ccd 7	ccd 8
level 1 events	23684	21591	34595	23817	29766	40210
rejected events	19838	18051	19006	20005	17277	22642
rejected %	83%	83%	54%	83%	58%	56%

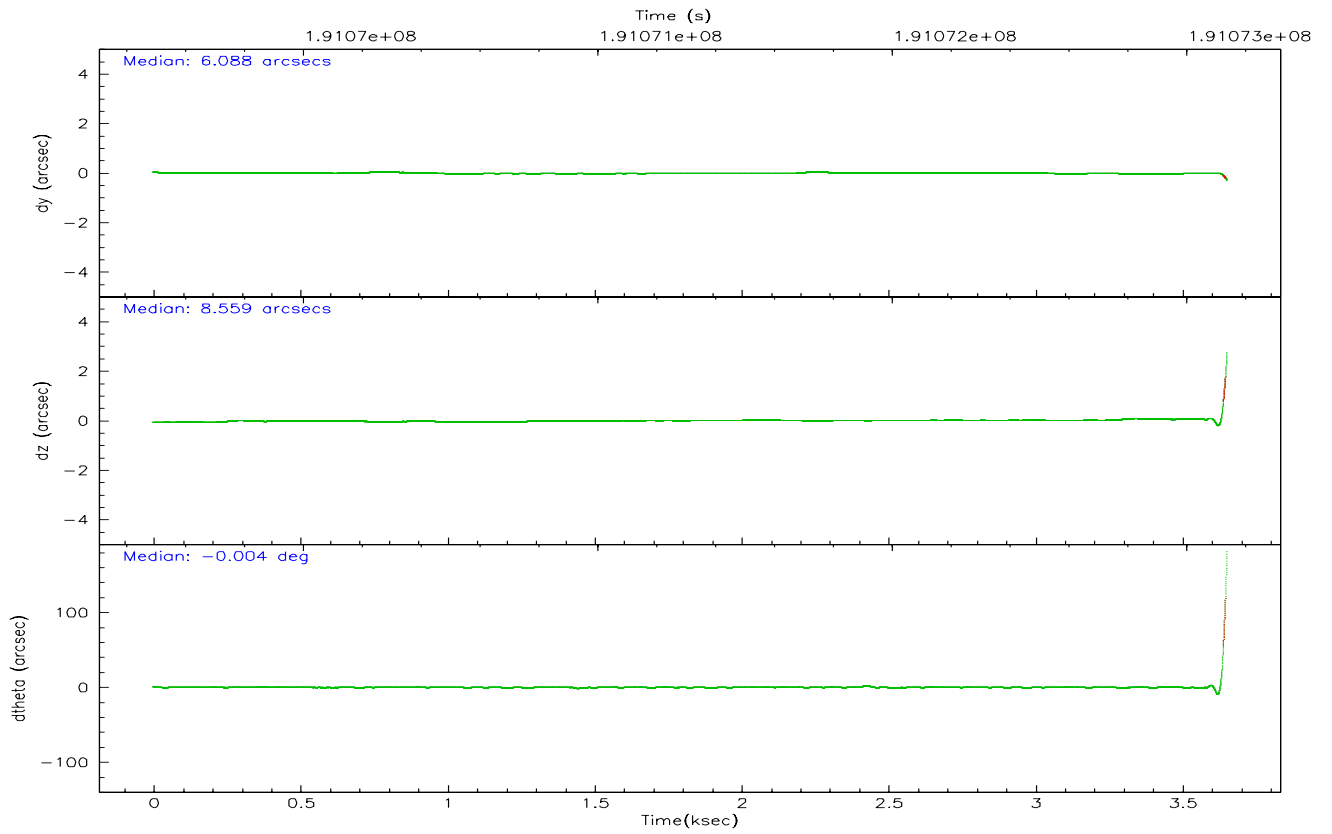
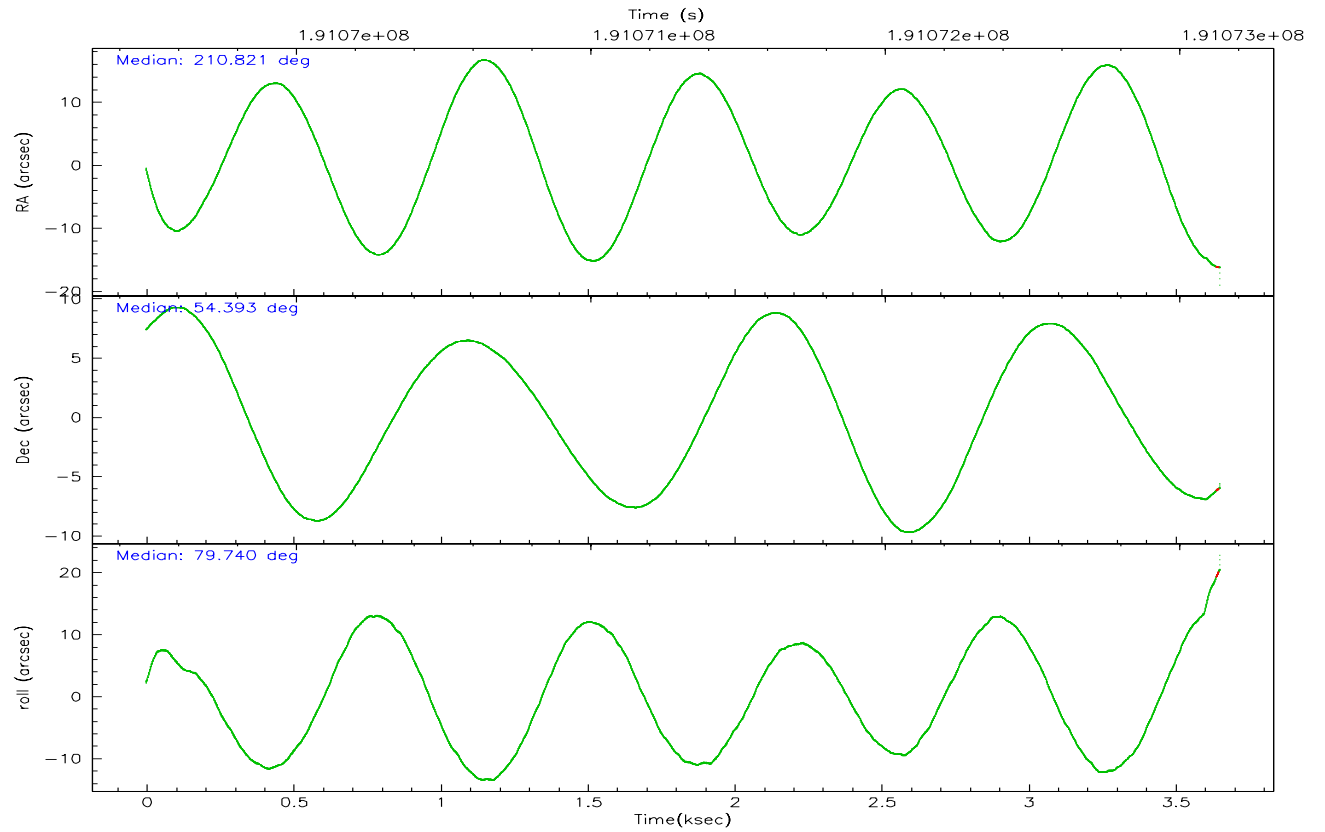
	ccd 2	ccd 3	ccd 5	ccd 6	ccd 7	ccd 8
grade 0 events	1804	1389	2015	1560	1362	6487
	7%	6%	5%	6%	4%	16%
grade 1 events	26	13	77	14	31	60
	0%	0%	0%	0%	0%	0%
grade 2 events	817	941	4805	1002	2566	2319
	3%	4%	13%	4%	8%	5%
grade 3 events	245	246	656	252	1136	3267
	1%	1%	1%	1%	3%	8%
grade 4 events	281	244	666	290	1140	2940
	1%	1%	1%	1%	3%	7%
grade 5 events	871	892	2407	995	2721	1341
	3%	4%	6%	4%	9%	3%
grade 6 events	755	761	7649	752	6431	2770
	3%	3%	22%	3%	21%	6%
grade 7 events	18885	17105	16320	18952	14379	21026
	79%	79%	47%	79%	48%	52%

2.2 Compared Parameters

Parameter	Planned	Actual	Parameter	Planned	Actual
Instrument	ACIS	ACIS	Obspar format version number	6	6
Detector	ACIS-235678	ACIS-235678	Obspar file type	PREDICTED	ACTUAL
Grating	NONE	NONE	Obspar update status	NONE	UPDATED
Data mode	VFAINT	VFAINT	On-chip summing requested	N	N
Observation mode	POINTING	POINTING	Subarray requested	NONE	NONE
Pointing RA	210.837114	210.8205818218172	Alternating exposures requested	N	N
Pointing Dec	54.367910	54.393460501993	Primary exposure time	0.000000	3.2
Pointing Roll	79.572882	79.74297159070812			
SIM focus pos (mm)	-0.684267	-0.6828225247311905			
SIM defocus (mm)	0	0.001444936568705701			
SIM translation stage pos (mm)	-190.132523	-190.1425803651734			
SIM translation stage offset (mm)	0	0.01005778216563158			
Observation start time	191069843.184000	191068793.01239			
Observation start date	2004-01-21T10:56:19	2004-01-21T10:39:53			
Observation end time	191131113.184000	191073157.46258			
Observation end date	2004-01-22T03:57:29	2004-01-21T11:52:37			
Read mode	TIMED	TIMED			

2.3 Aspect



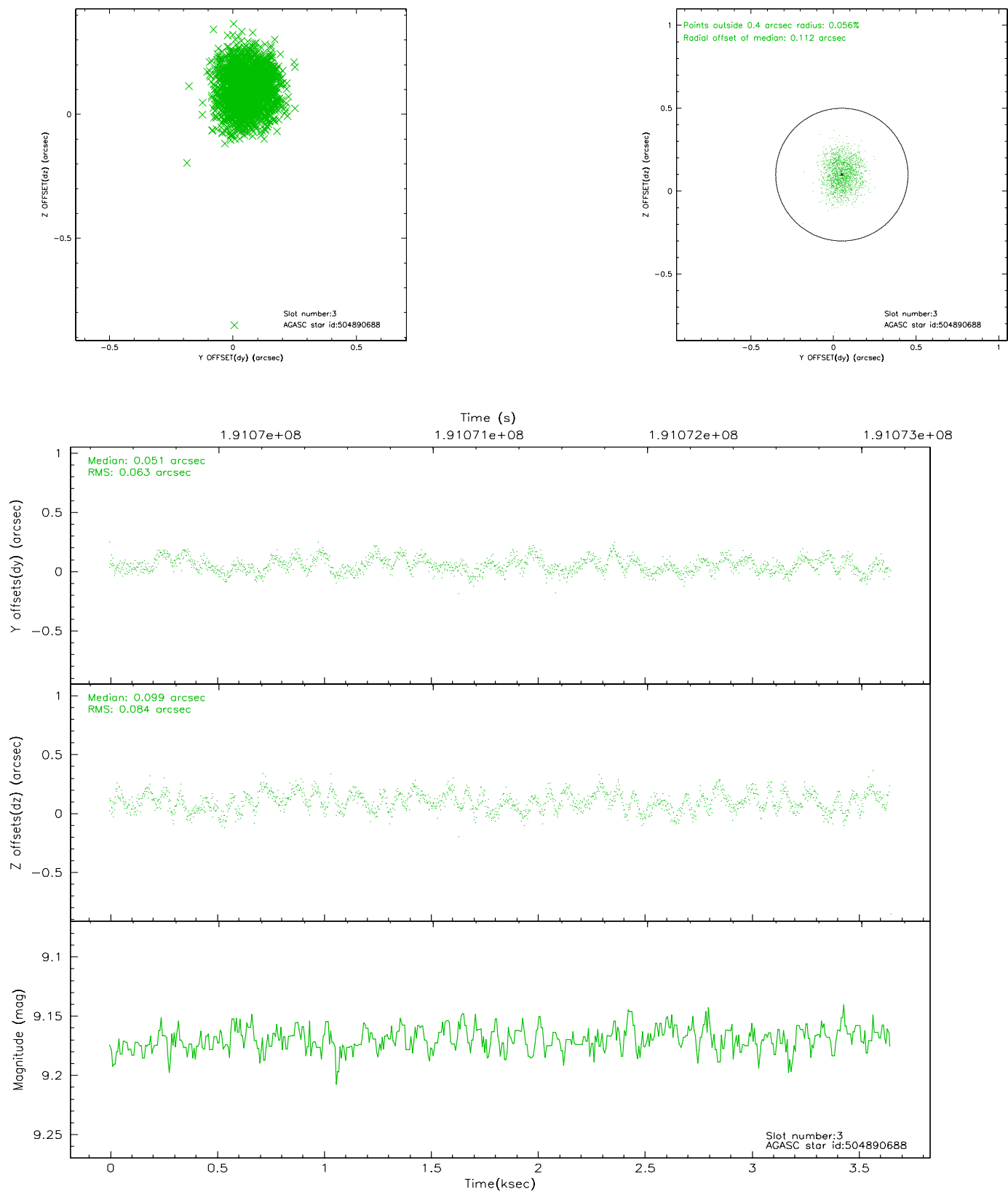


Slot Statistics

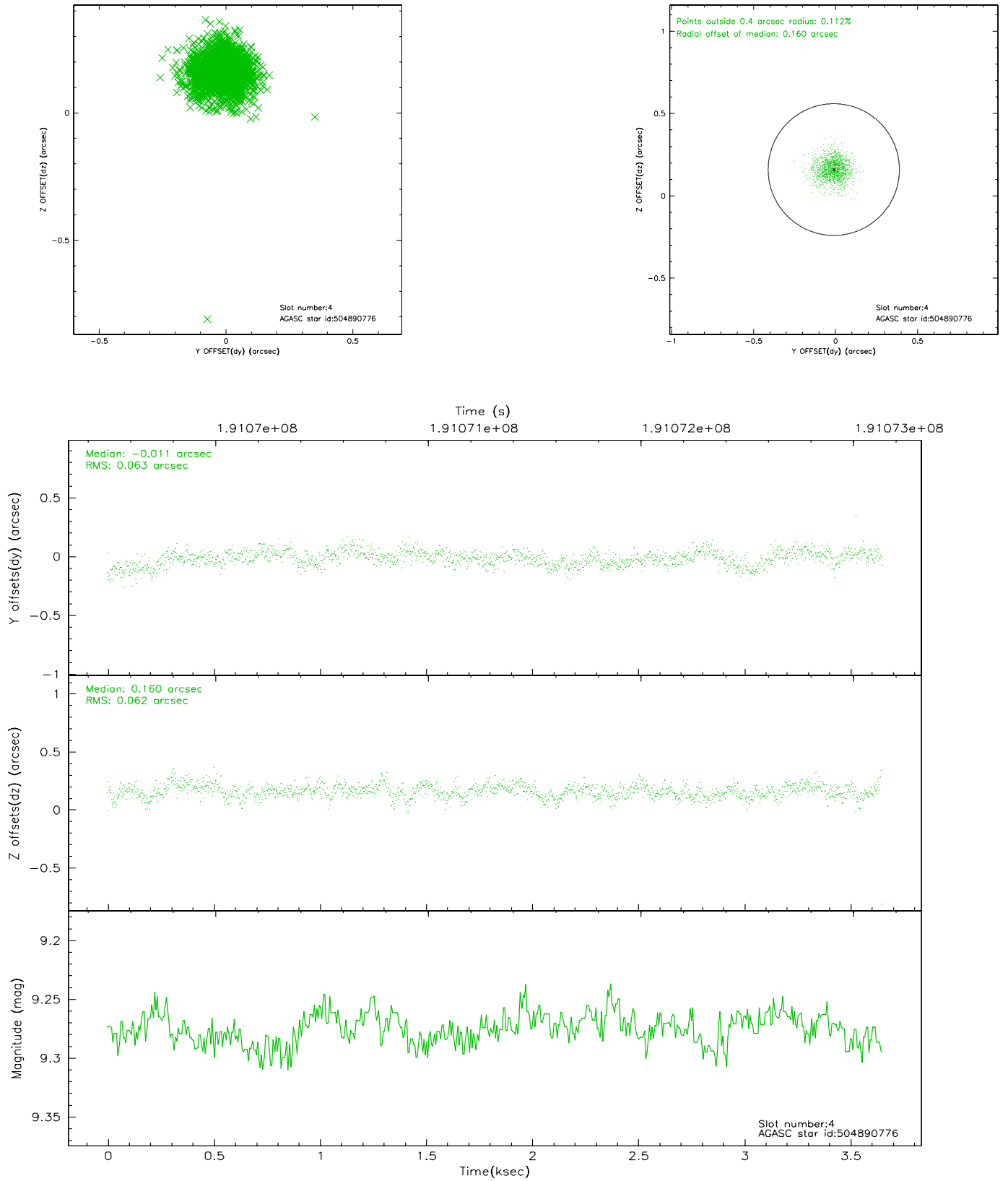
slot	status	id	mag	n_pts	med_dy	med_dz	dr1	dr2	ra	dec	mean_y	mean_z
0	FID	ACIS-S-2	7.10	892	-0.060	-0.031	0.006	0.011	0.000000	0.000000	-758.89	-1729.74
1	FID	ACIS-S-4	7.20	887	0.045	0.038	0.007	0.011	0.000000	0.000000	2153.73	176.99
2	FID	ACIS-S-6	7.35	887	-0.013	-0.001	0.008	0.012	0.000000	0.000000	405.39	816.34
3	GUIDE	504890688	9.17	1780	0.051	0.099	0.111	0.170	211.697686	53.837149	-1537.42	-2142.20
4	GUIDE	504890776	9.27	1779	-0.011	0.160	0.090	0.150	211.095934	54.816966	1687.22	-236.39
5	GUIDE	504891480	8.07	1780	0.027	-0.090	0.070	0.106	210.708012	54.666096	1008.33	458.32
6	GUIDE	504894856	8.99	1780	0.057	-0.101	0.083	0.130	209.819510	54.132689	-1205.53	1960.35
7	GUIDE	505292416	9.33	1780	-0.117	-0.069	0.094	0.155	210.920759	55.040479	2412.05	269.83

2.4 Star Slots

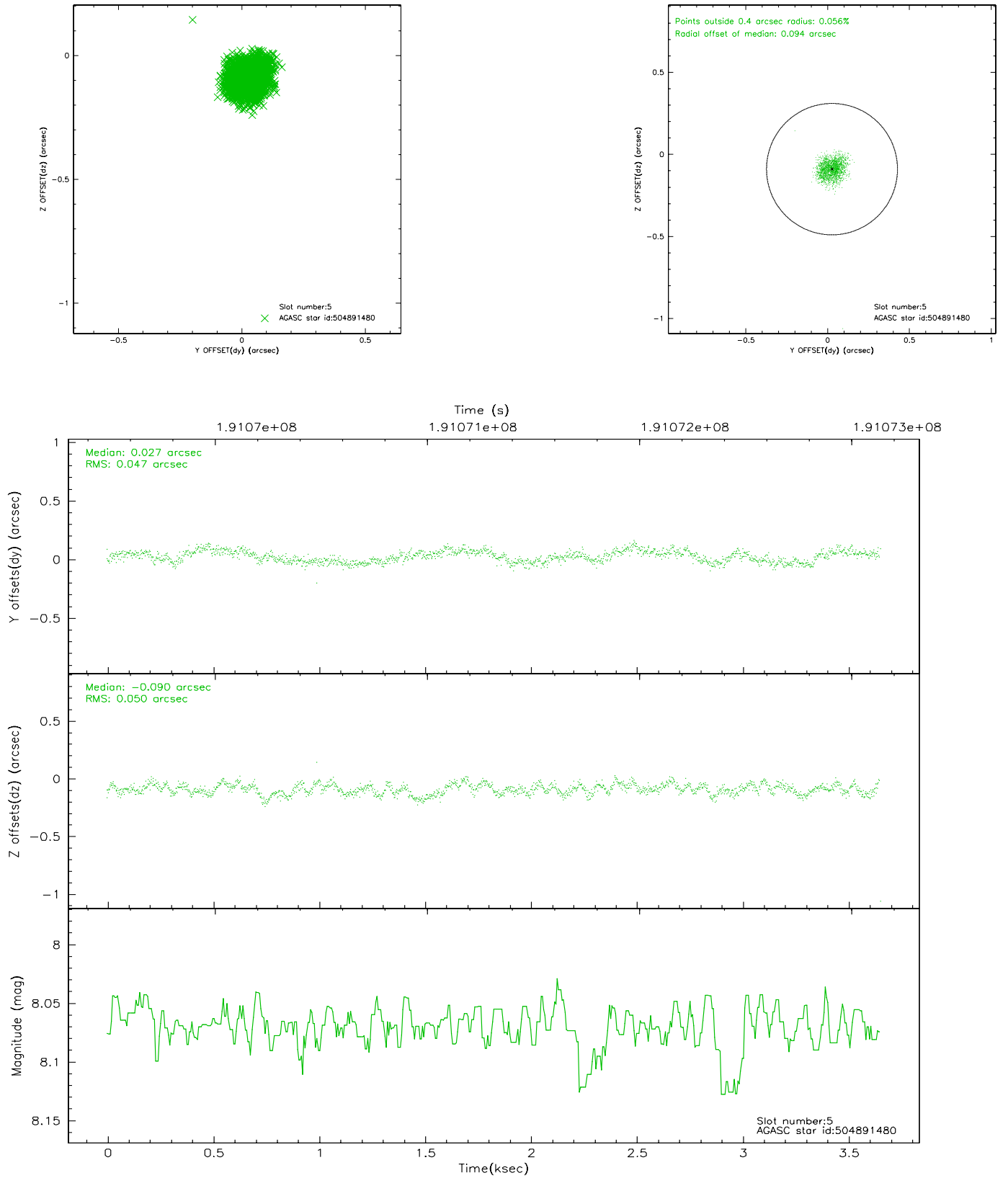
2.4.1 Slot 3



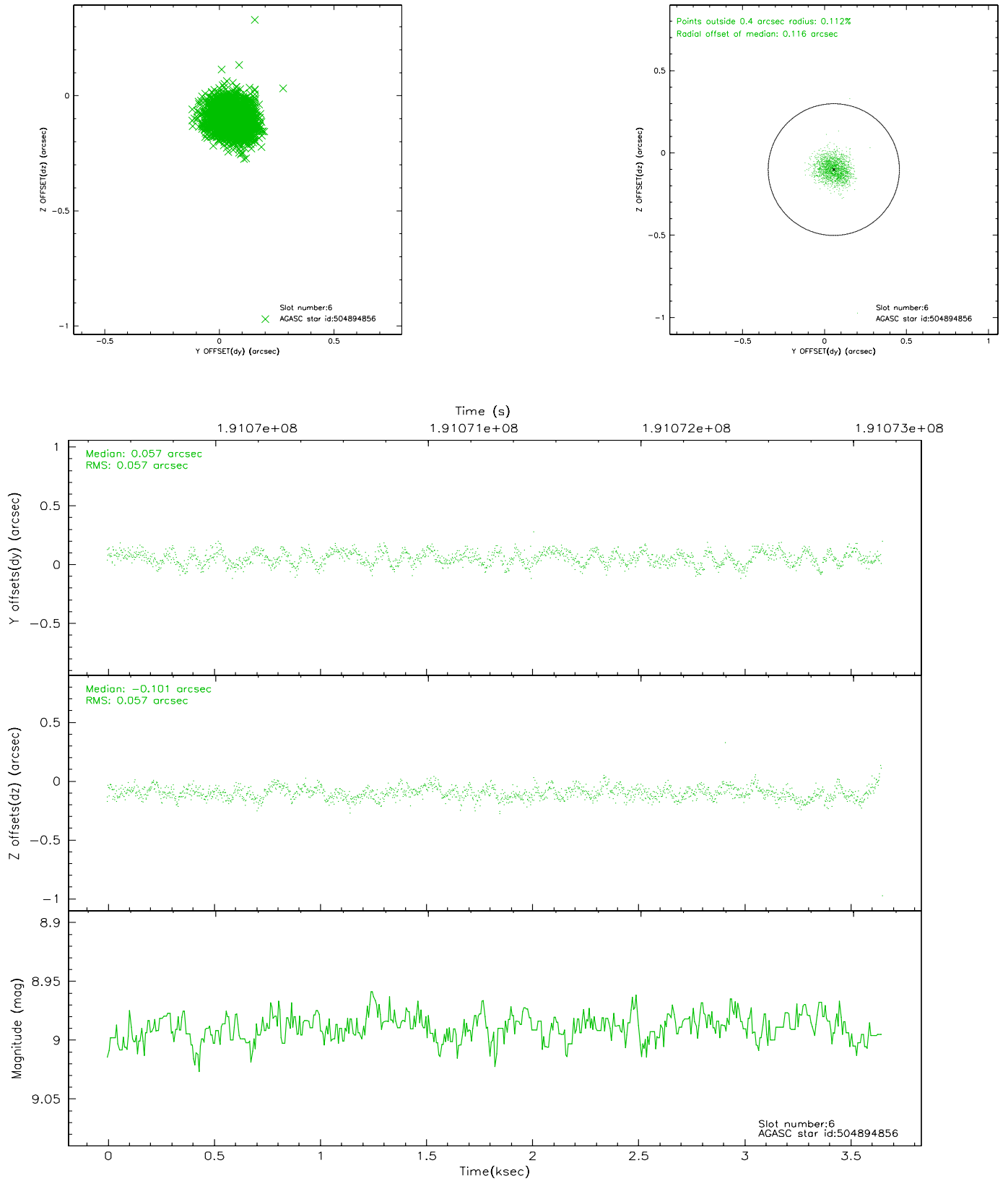
2.4.2 Slot 4



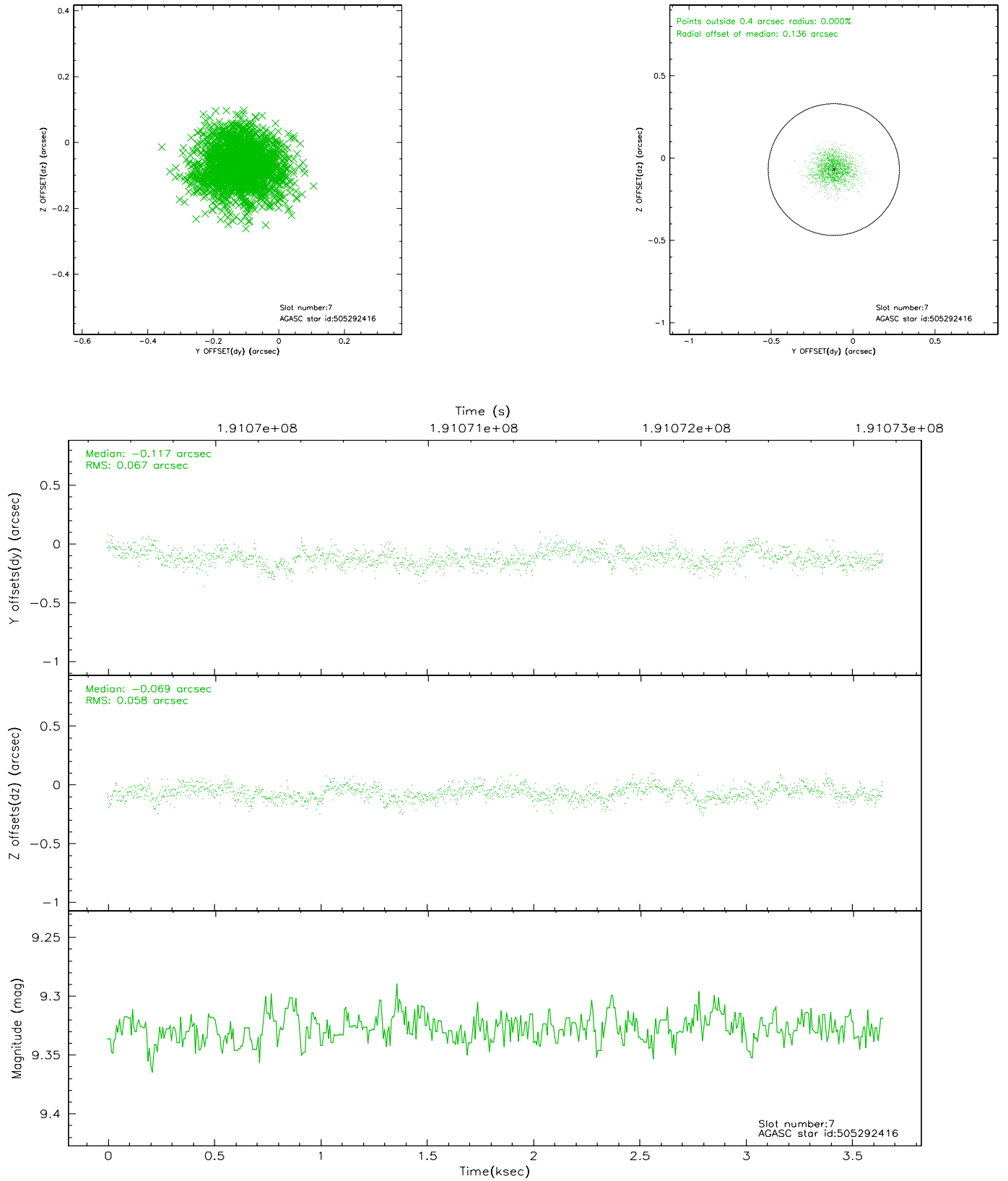
2.4.3 Slot 5



2.4.4 Slot 6

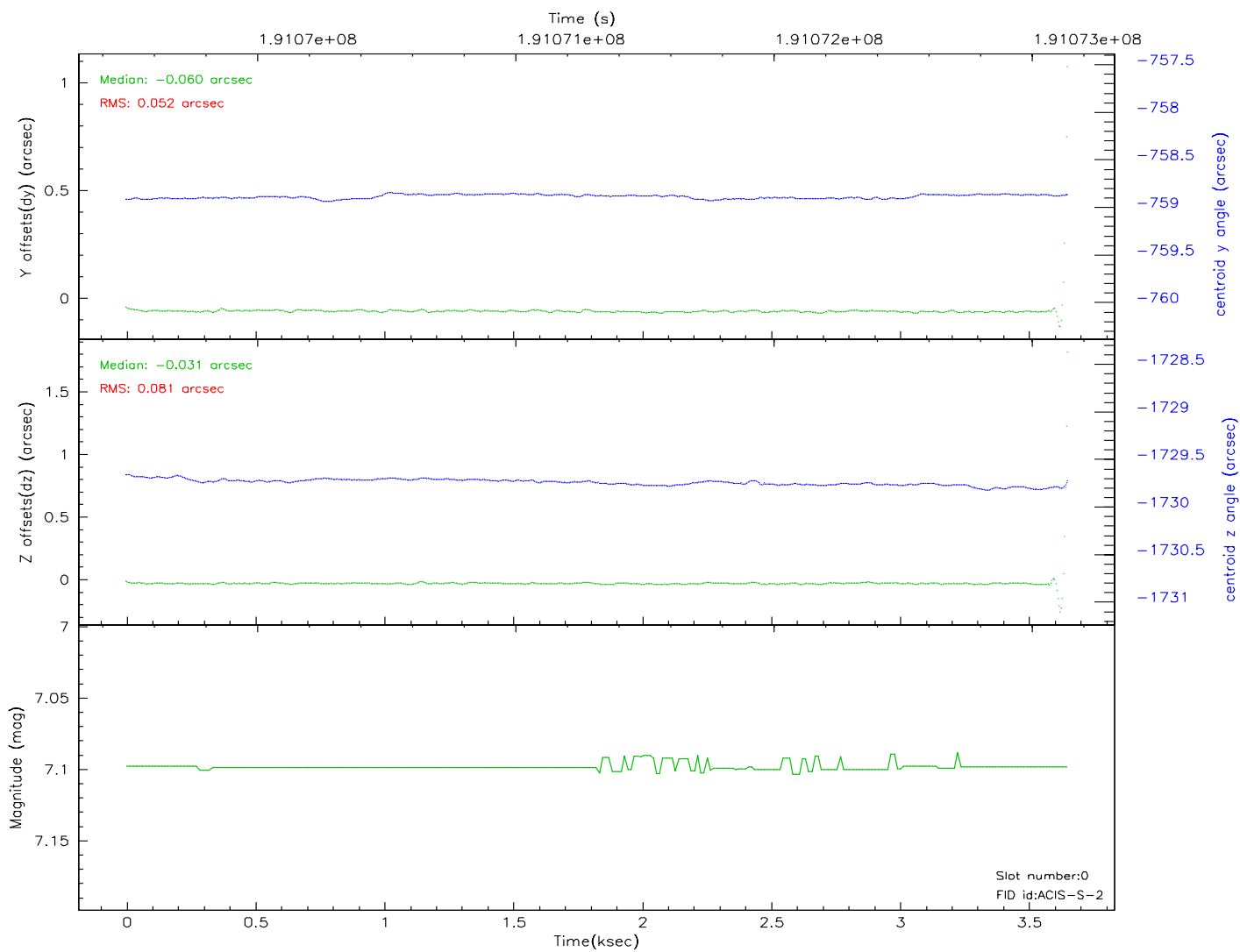
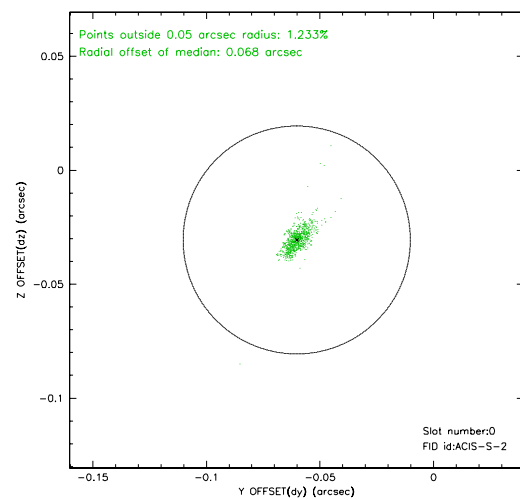
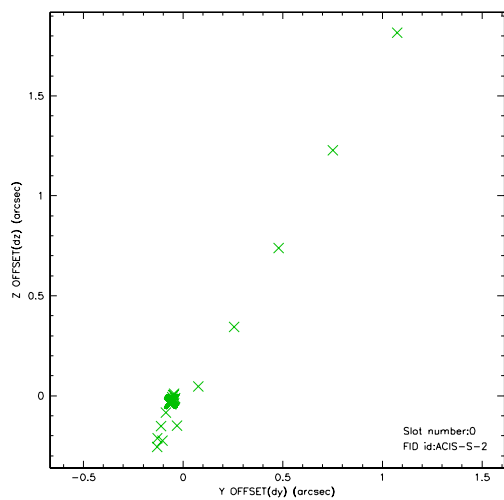


2.4.5 Slot 7

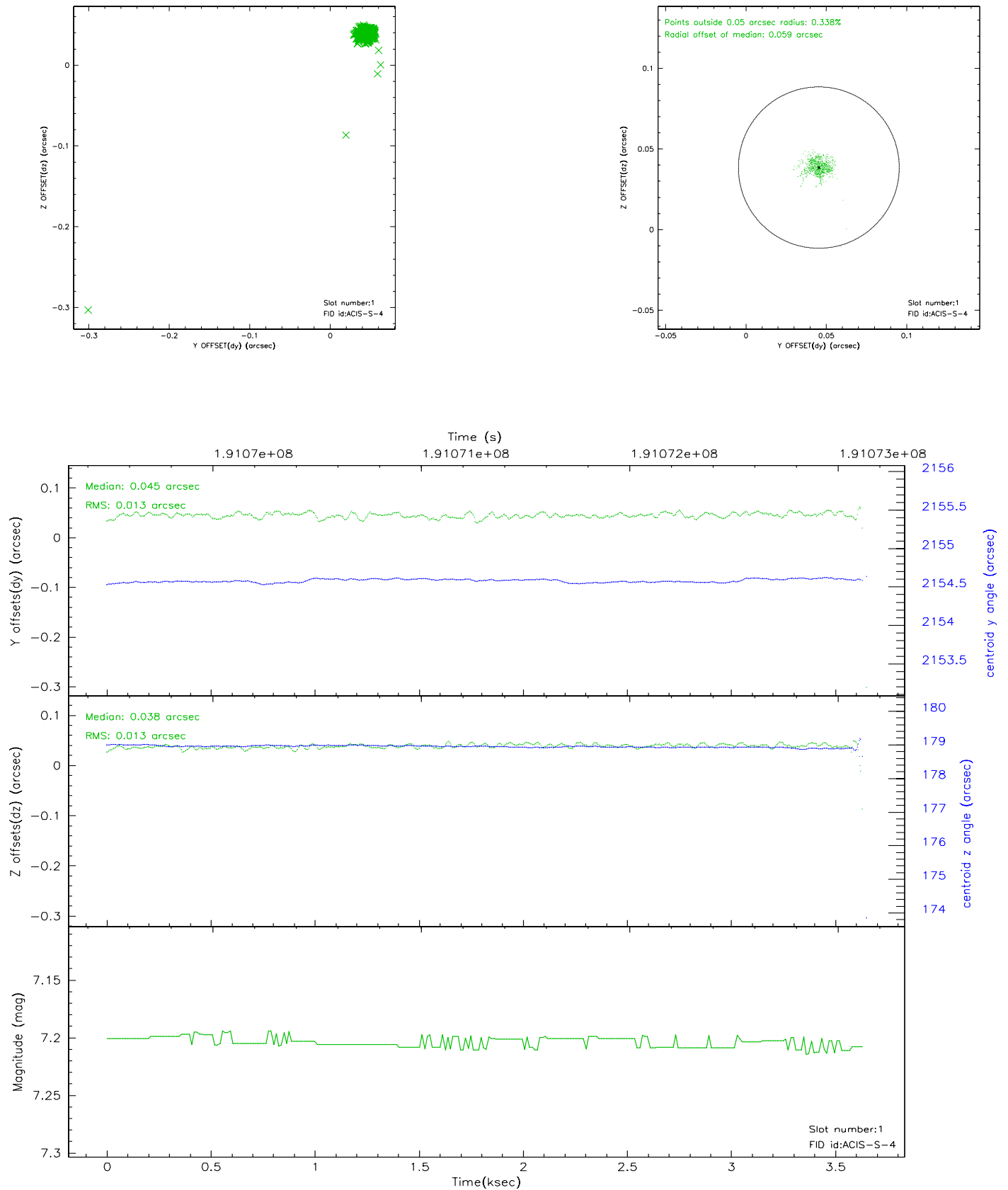


2.5 FID Slots

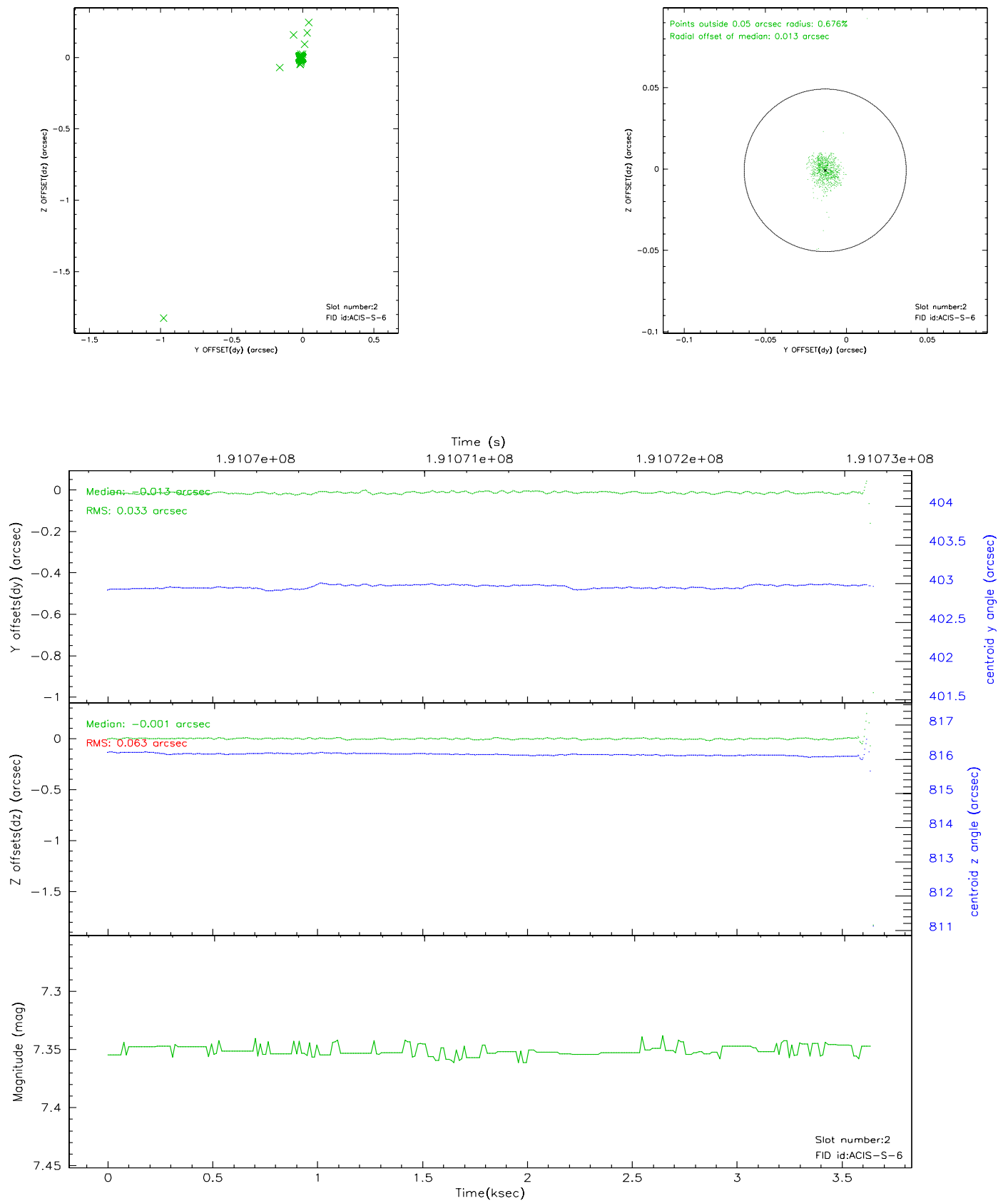
2.5.1 Slot 0



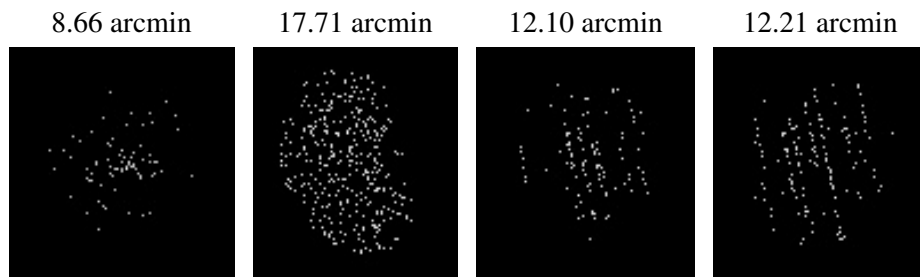
2.5.2 Slot 1



2.5.3 Slot 2



3 Point Sources



A Summary

A.1 Status

V&V Scientist	Beth Sundheim
V&V Date (YYYY-MM-DD)	2009.01.15
V&V Edition	1
V&V Disposition and Status	OK
V&V Charge Time	3.231

A.2 Comments

This observation was interrupted by safing of the science instruments due to high solar radiation environment. The observation was interrupted at 2004:021:12:03:33 UT.