

V&V Reference Report

L2 ASCDS Version : 7.6.7.2

Observation 5197 - L2 Version 001
Chandra X-Ray Center

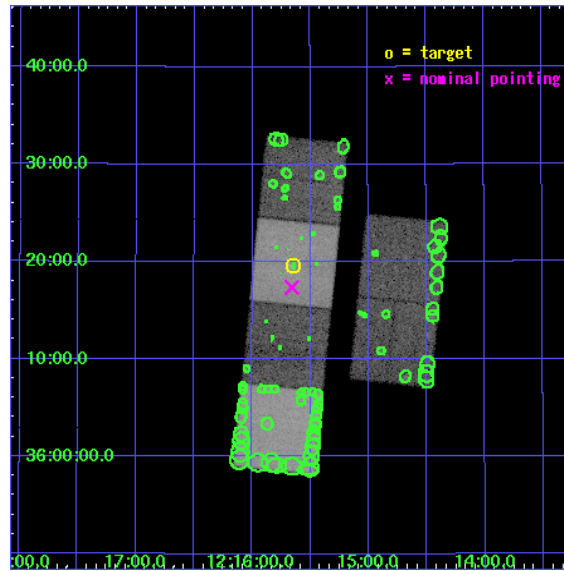
L2 Processing Date : Apr 26 2006

Contents

1	Front	2
2	OBI	3
2.1	OBI	3
2.1.1	Images	3
2.1.2	Bias	3
2.1.3	Parameters	4
2.1.4	Events	4
2.2	Compared Parameters	5
2.3	Aspect	6
2.4	Star Slots	9
2.4.1	Slot 3	9
2.4.2	Slot 4	10
2.4.3	Slot 5	11
2.4.4	Slot 6	12
2.4.5	Slot 7	13
2.5	FID Slots	14
2.5.1	Slot 0	14
2.5.2	Slot 1	15
2.5.3	Slot 2	16
3	Point Sources	17
A	Summary	18
A.1	Status	18
A.2	Comments	18

1 Front

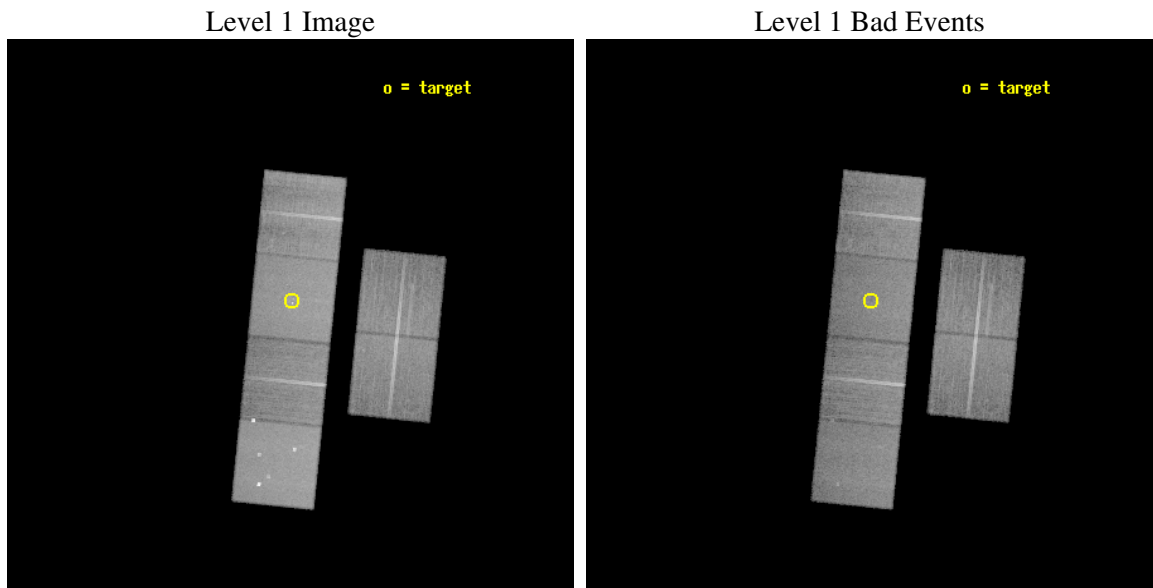
seq_num	600411
obs_id	5197
title	The discrete X-ray source populations in an age sequence of nearby starburst galaxies
observer	Dr. Andreas Zezas
object	NGC4214
dtcycle	0
cycle	P
ra_targ	183.912083
dec_targ	36.327778
ra_nom	183.9146379639
dec_nom	36.289618551182
roll_nom	275.75917367155
revision	2
ontime	28959.999892116
livetime	28593.290935863
ontime2	28956.758921832
ontime3	28959.999892116
ontime5	28959.999892116
ontime6	28959.999892116
ontime7	28959.999892116
ontime8	28959.999892116
l2events	316160



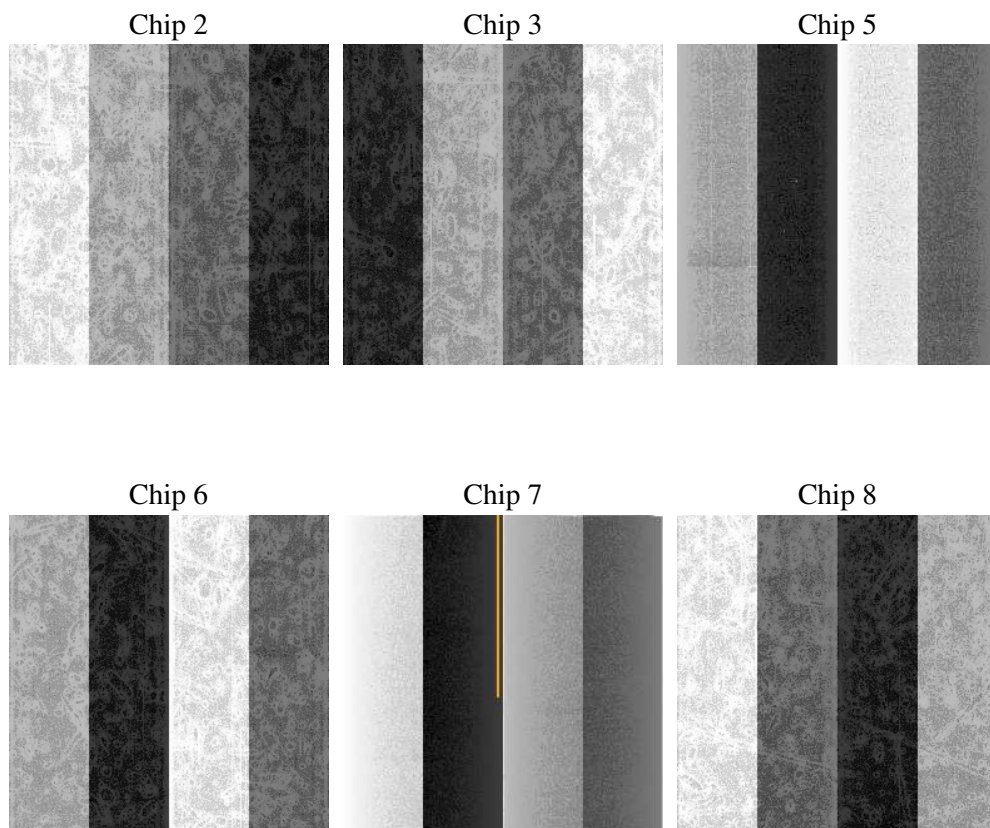
2 OBI

2.1 OBI

2.1.1 Images



2.1.2 Bias



2.1.3 Parameters

obi_num	3
ascdsver	7.6.7.2
caldsver	3.2.1
date	2006-04-26T10:54:37
revision	2

sched_exp_time	29000.000000
ontime	28964.815698117
ontime2	28961.574727833
ontime3	28964.815698117
ontime5	28964.815698117
ontime6	28964.815698117
ontime7	28964.815698117
ontime8	28964.815698117
l1events	1449901

2.1.4 Events

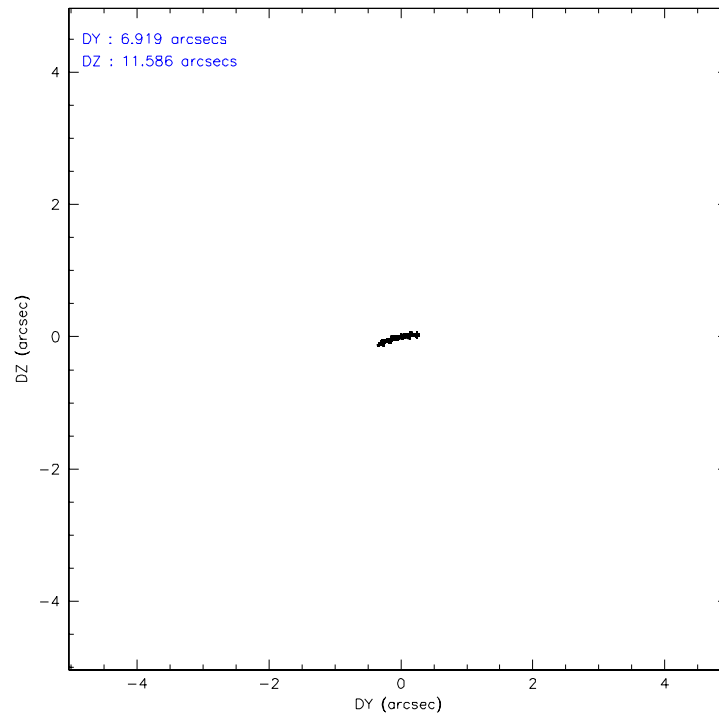
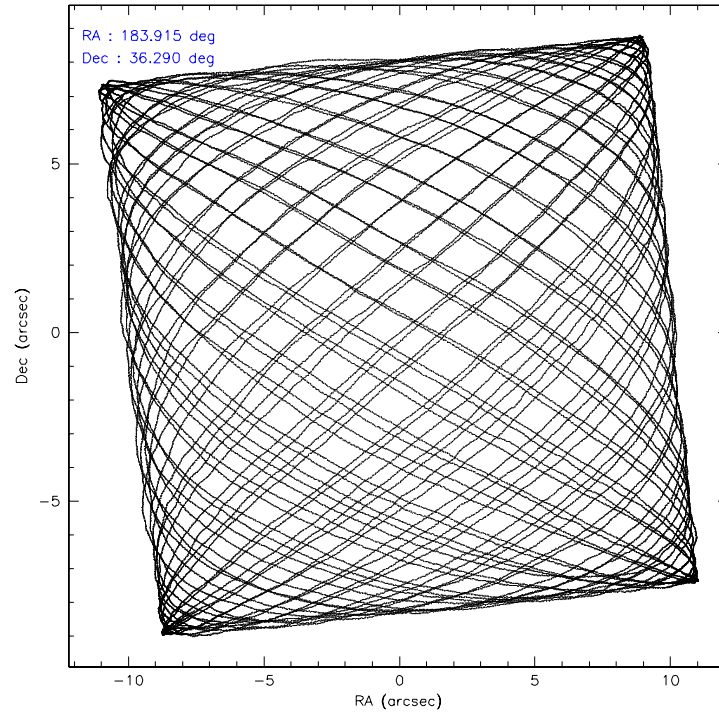
	ccd 2	ccd 3	ccd 5	ccd 6	ccd 7	ccd 8
level 1 events	203329	197570	307842	205754	274816	260590
rejected events	178168	173816	168637	181135	169442	200609
rejected %	87%	87%	54%	88%	61%	76%

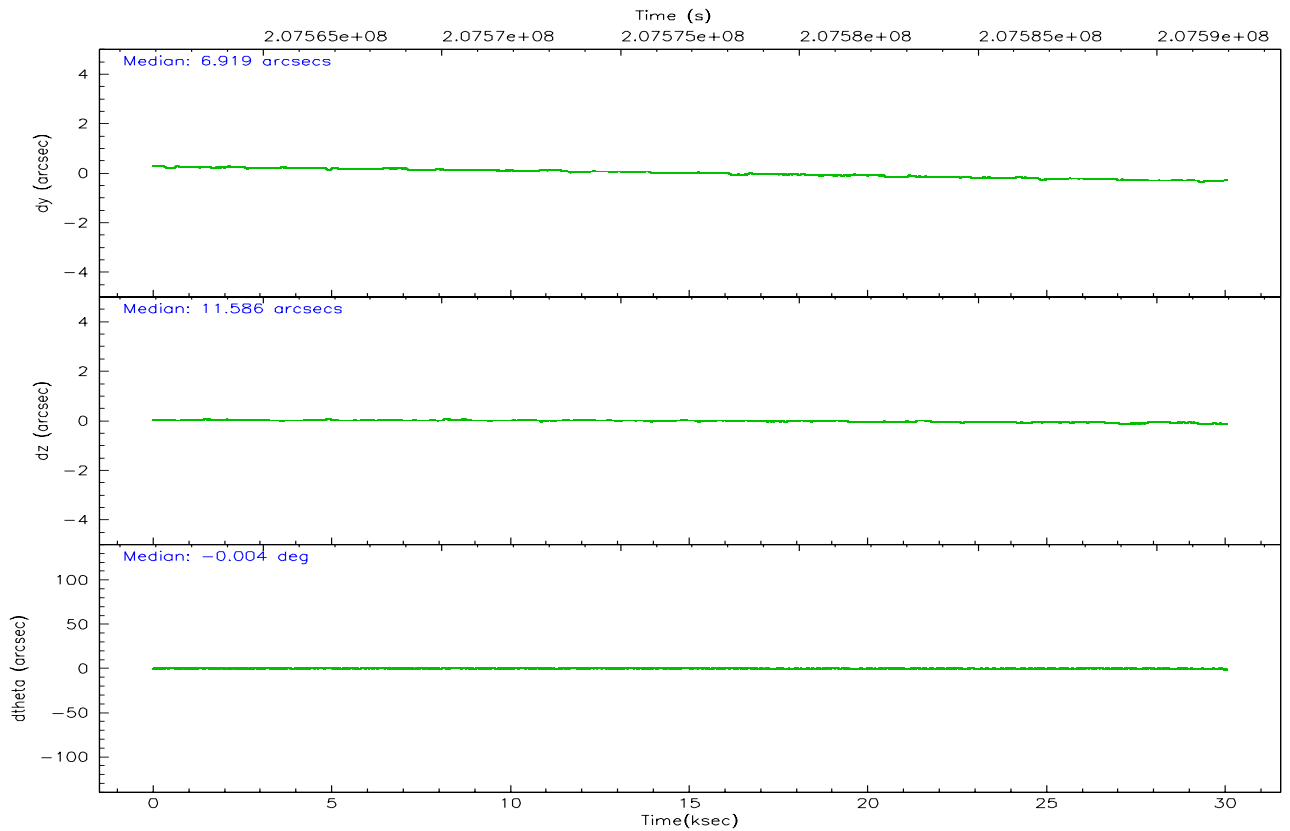
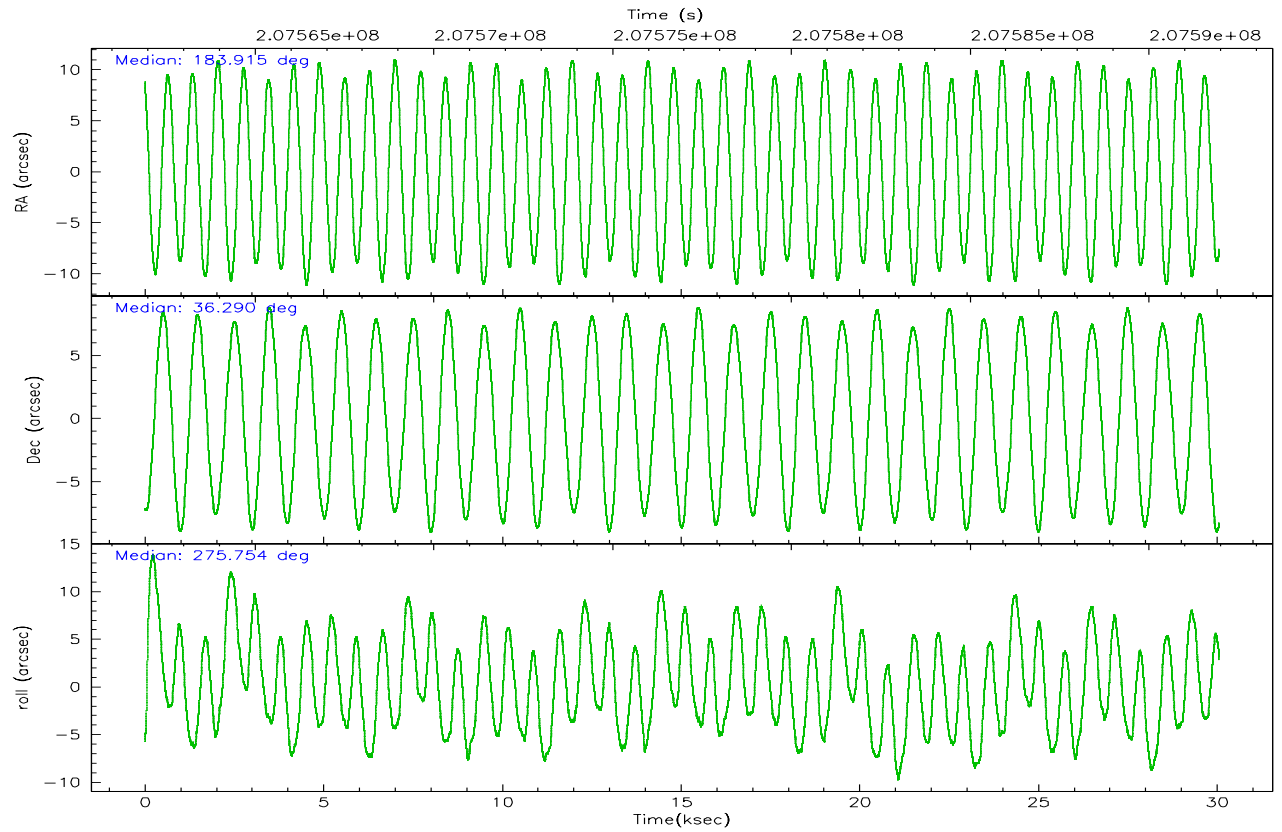
	ccd 2	ccd 3	ccd 5	ccd 6	ccd 7	ccd 8
grade 0 events	11256	10486	14946	9848	6728	19390
	5%	5%	4%	4%	2%	7%
grade 1 events	137	117	709	101	195	179
	0%	0%	0%	0%	0%	0%
grade 2 events	5234	4609	42075	5225	26352	12411
	2%	2%	13%	2%	9%	4%
grade 3 events	2310	2257	3128	2372	5253	6983
	1%	1%	1%	1%	1%	2%
grade 4 events	2339	2309	3277	2230	5316	6501
	1%	1%	1%	1%	1%	2%
grade 5 events	8153	8748	14647	9136	18000	12307
	4%	4%	4%	4%	6%	4%
grade 6 events	4025	4100	75807	4953	61754	14731
	1%	2%	24%	2%	22%	5%
grade 7 events	169875	164944	153253	171889	151218	188088
	83%	83%	49%	83%	55%	72%

2.2 Compared Parameters

Parameter	Planned	Actual	Parameter	Planned	Actual
Instrument	ACIS	ACIS	Obspar format version number	6	6
Detector	ACIS-235678	ACIS-235678	Obspar file type	PREDICTED	ACTUAL
Grating	NONE	NONE	Obspar update status	NONE	UPDATED
Data mode	FAINT	FAINT	On-chip summing requested	N	N
Observation mode	POINTING	POINTING	Subarray requested	NONE	NONE
Pointing RA	183.894530	183.9146379639004	Alternating exposures requested	N	N
Pointing Dec	36.311487	36.28961855118197	Primary exposure time	0.000000	3.2
Pointing Roll	275.614457	275.7591736715535			
SIM focus pos (mm)	-0.684267	-0.6828225247311905			
SIM defocus (mm)	0	0.001444936568705701			
SIM translation stage pos (mm)	-190.132523	-190.1400660498719			
SIM translation stage offset (mm)	0	0.00754346686406393			
Observation start time	207562975.184000	207561576.73896			
Observation start date	2004-07-30T08:21:51	2004-07-30T07:59:36			
Observation end time	207591975.184000	207592585.04034			
Observation end date	2004-07-30T16:25:11	2004-07-30T16:36:25			
Read mode	TIMED	TIMED			

2.3 Aspect



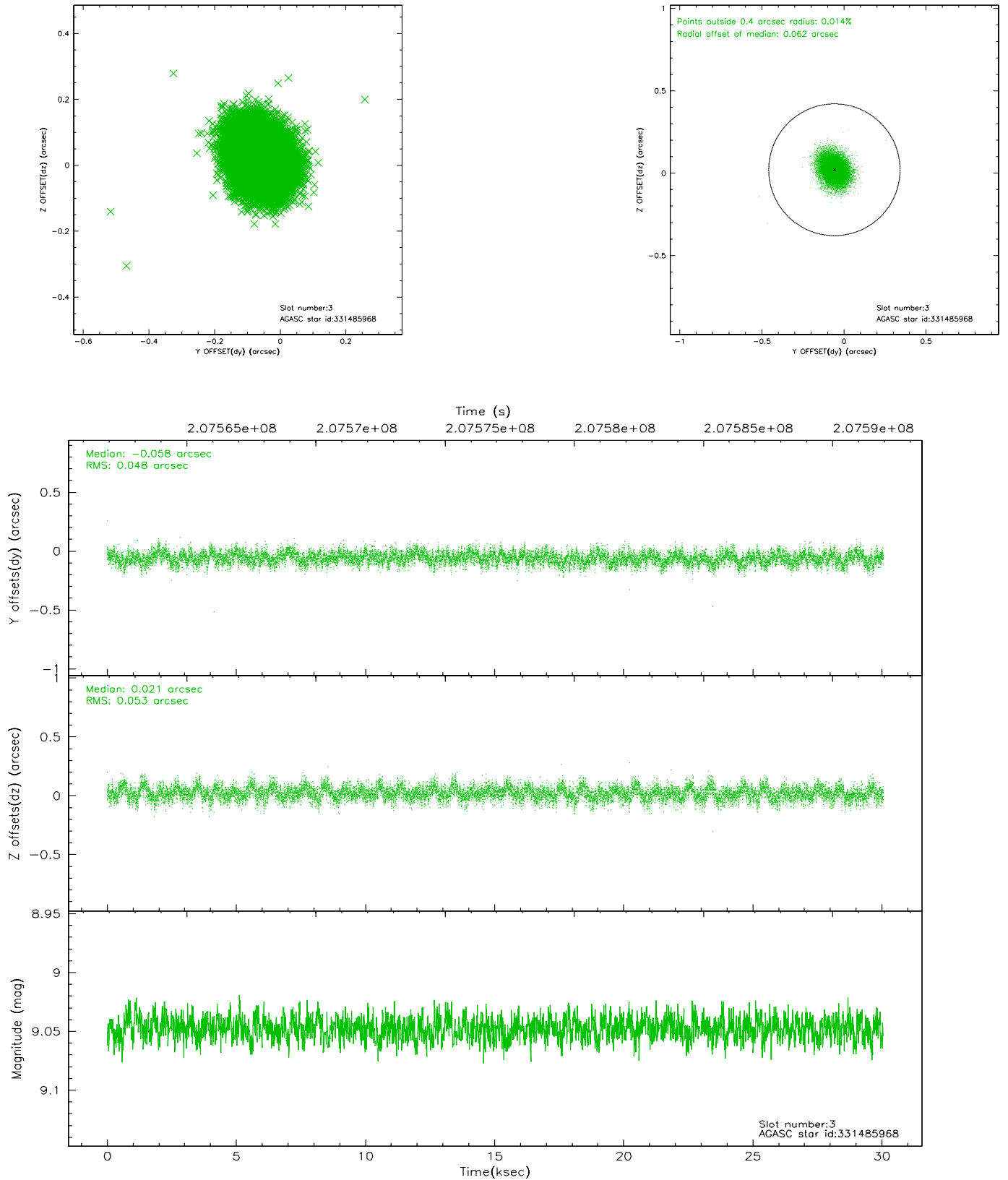


Slot Statistics

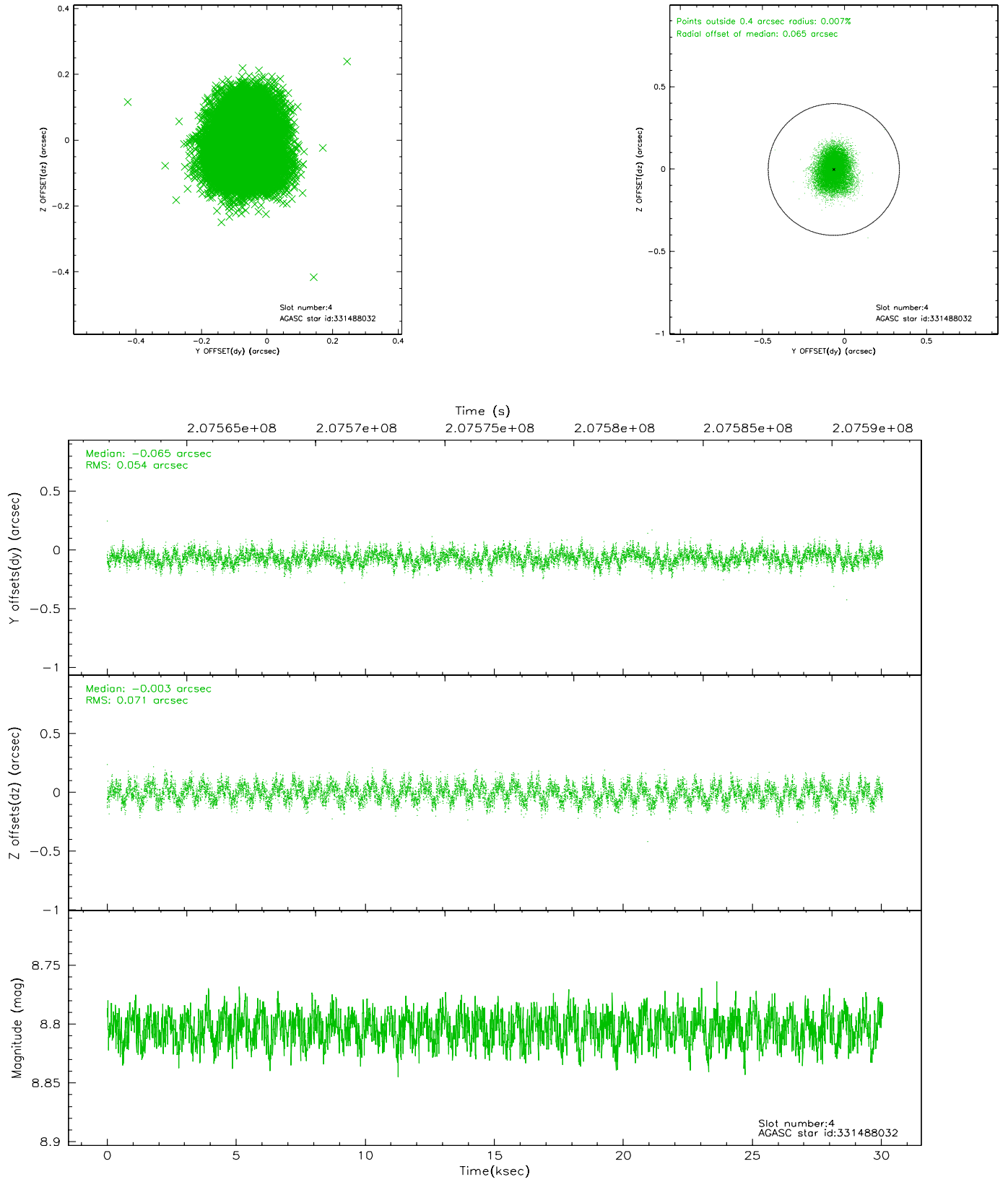
slot	status	id	mag	n_pts	med_dy	med_dz	dr1	dr2	ra	dec	mean_y	mean_z
0	FID	ACIS-S-2	7.10	7330	-0.023	0.007	0.015	0.021	0.000000	0.000000	-759.67	-1732.86
1	FID	ACIS-S-4	7.20	7330	0.012	0.009	0.018	0.025	0.000000	0.000000	2153.60	175.57
2	FID	ACIS-S-5	7.23	7331	-0.023	-0.007	0.008	0.014	0.000000	0.000000	-1812.43	169.28
3	GUIDE	331485968	9.05	14656	-0.058	0.021	0.075	0.124	183.439805	36.736932	-1655.28	-1155.30
4	GUIDE	331488032	8.80	14657	-0.065	-0.003	0.096	0.150	183.136084	36.256011	-24.95	-2209.75
5	GUIDE	331488832	9.94	14644	-0.032	-0.082	0.130	0.205	184.485285	36.899363	-1945.00	1899.98
6	GUIDE	331496008	9.37	14572	0.157	0.000	0.105	0.169	184.214946	35.936223	1434.74	797.95
7	GUIDE	331496608	9.60	14643	0.002	0.061	0.128	0.212	183.557200	35.638037	2315.28	-1219.47

2.4 Star Slots

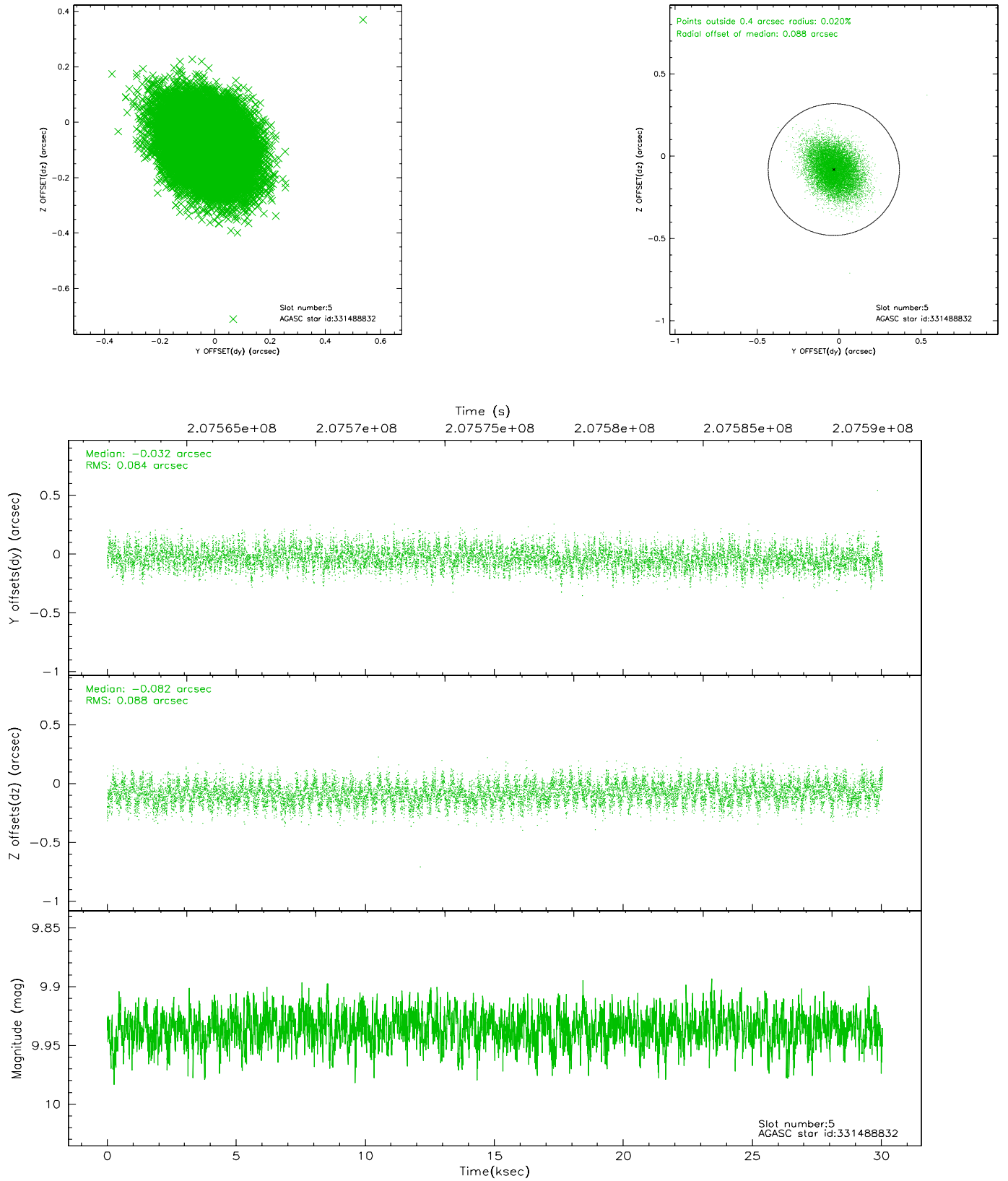
2.4.1 Slot 3



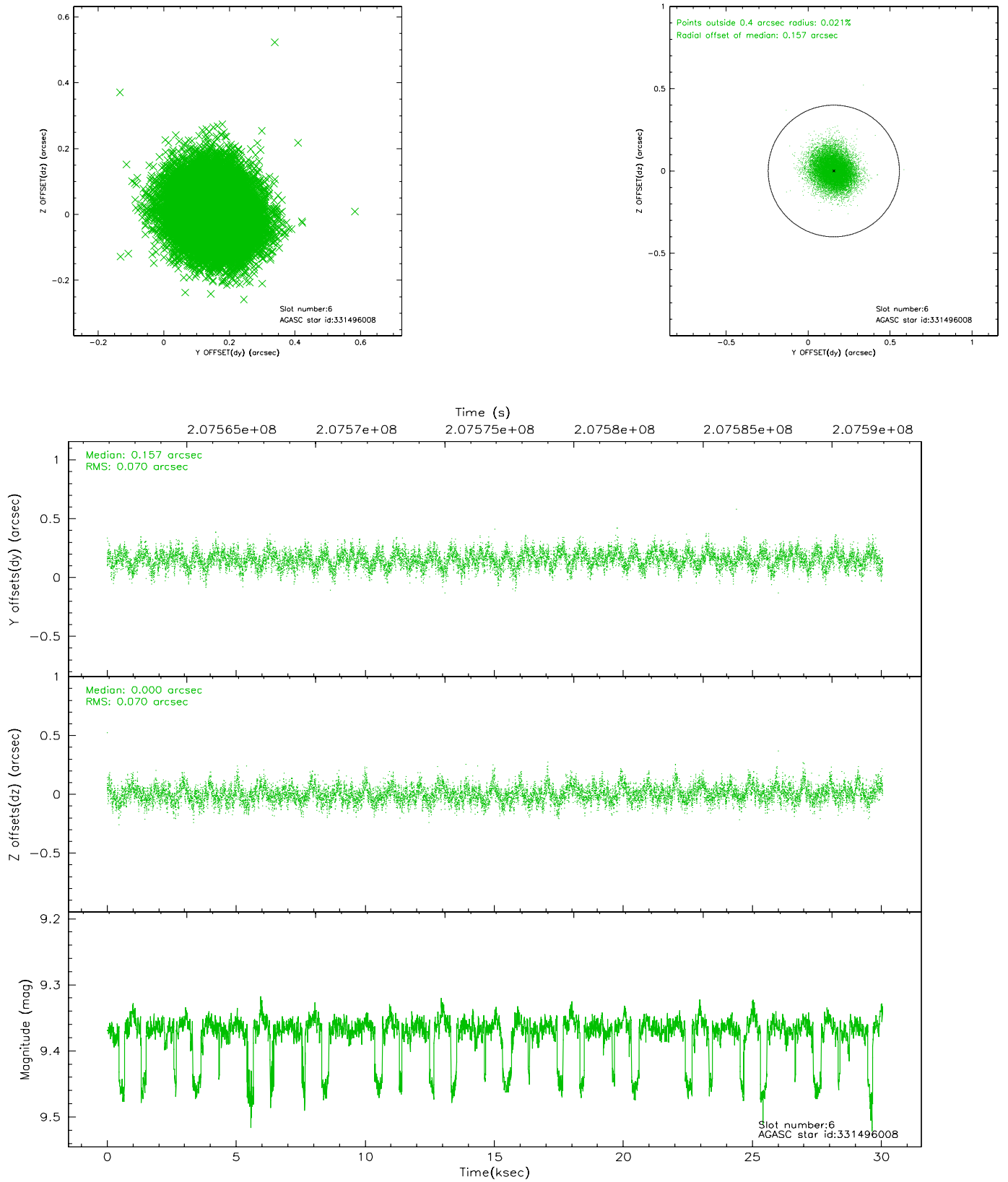
2.4.2 Slot 4



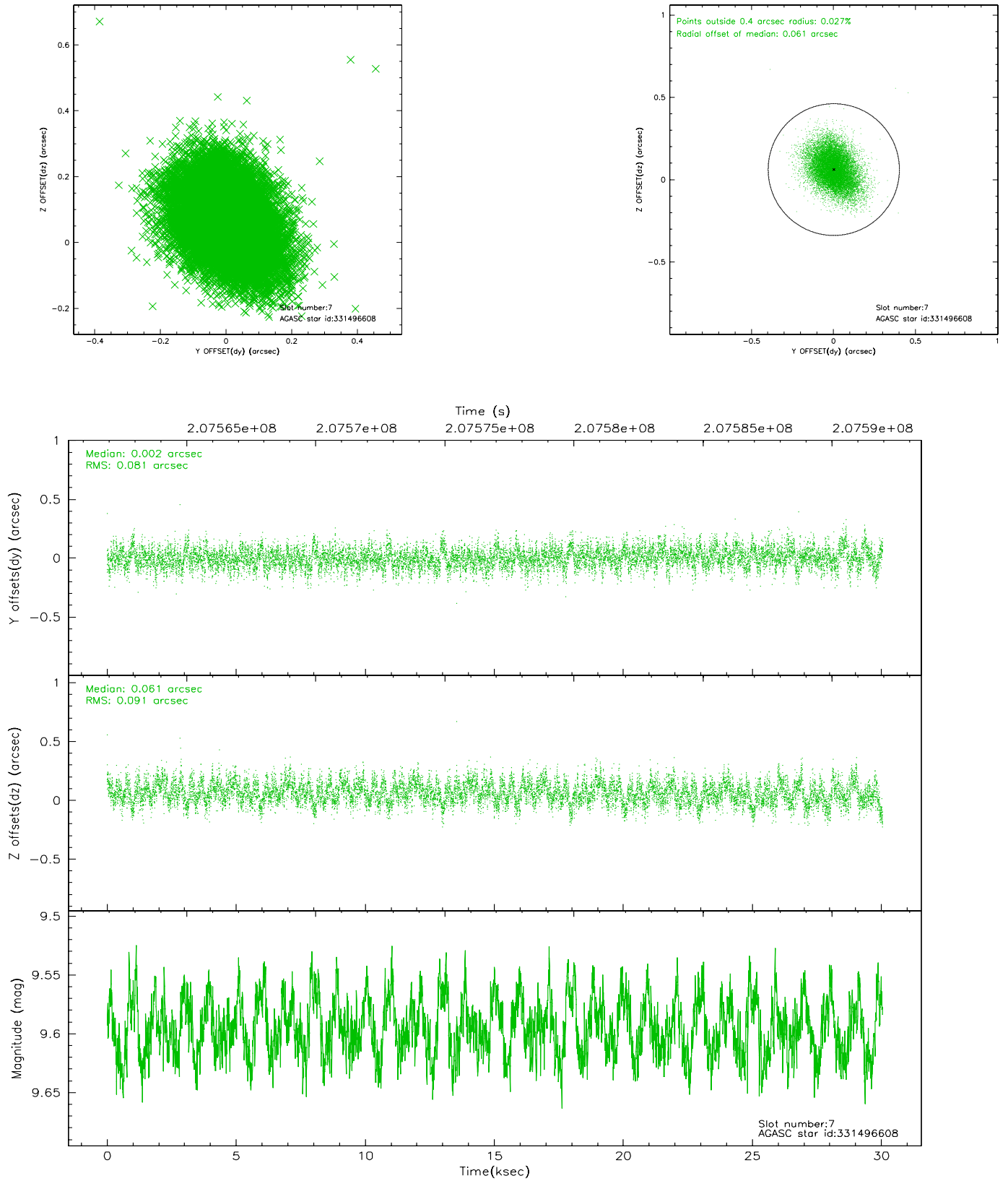
2.4.3 Slot 5



2.4.4 Slot 6

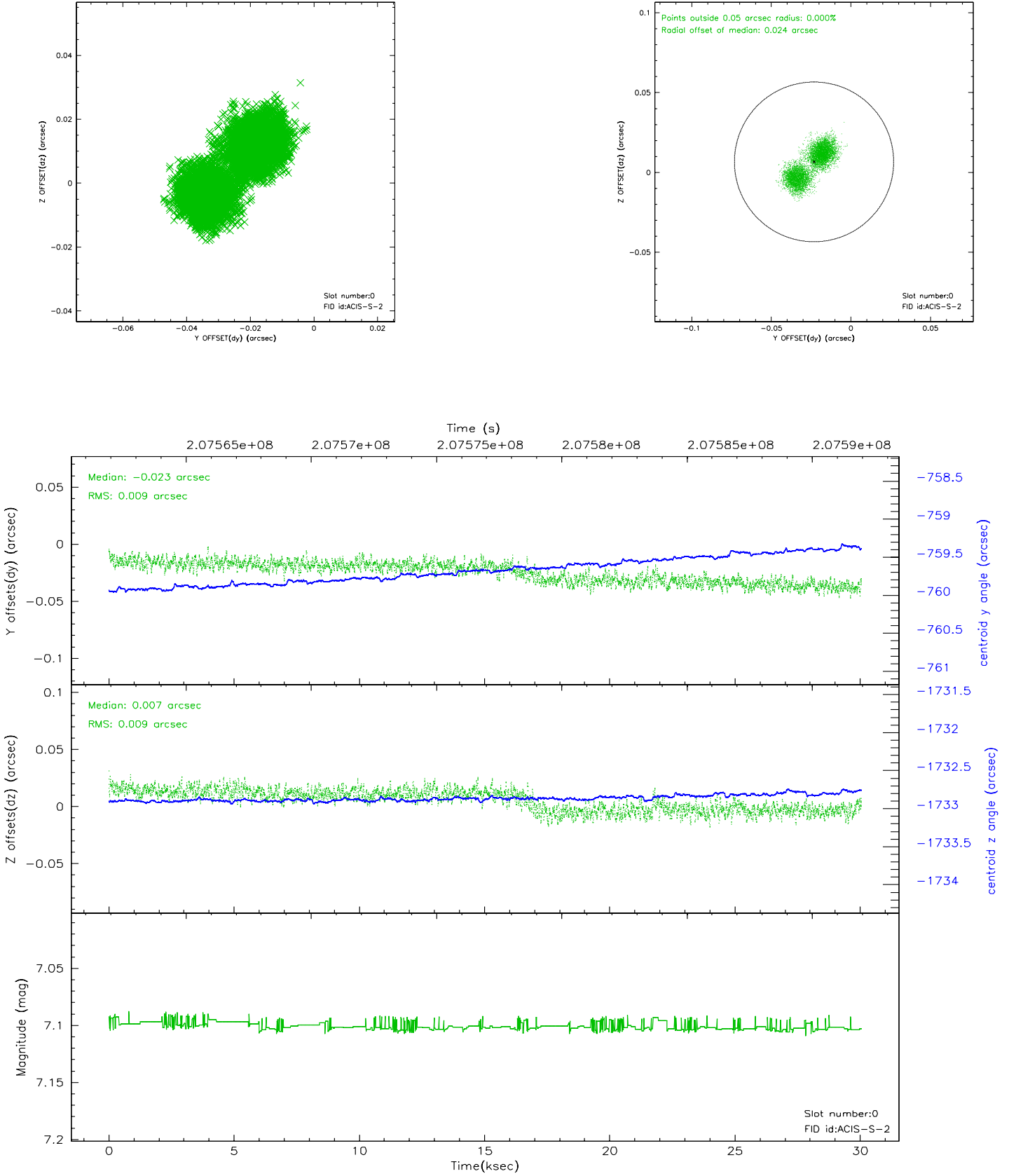


2.4.5 Slot 7

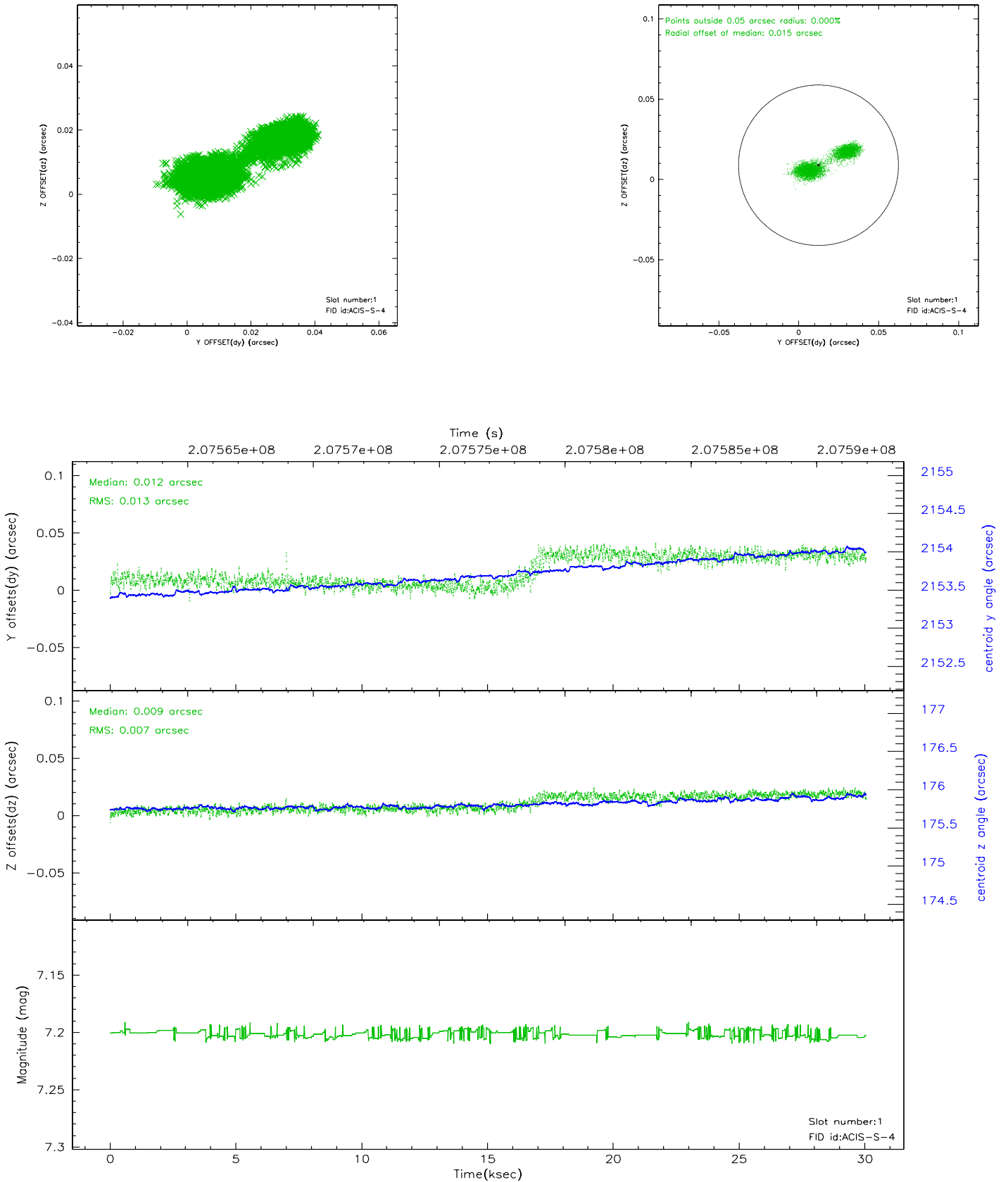


2.5 FID Slots

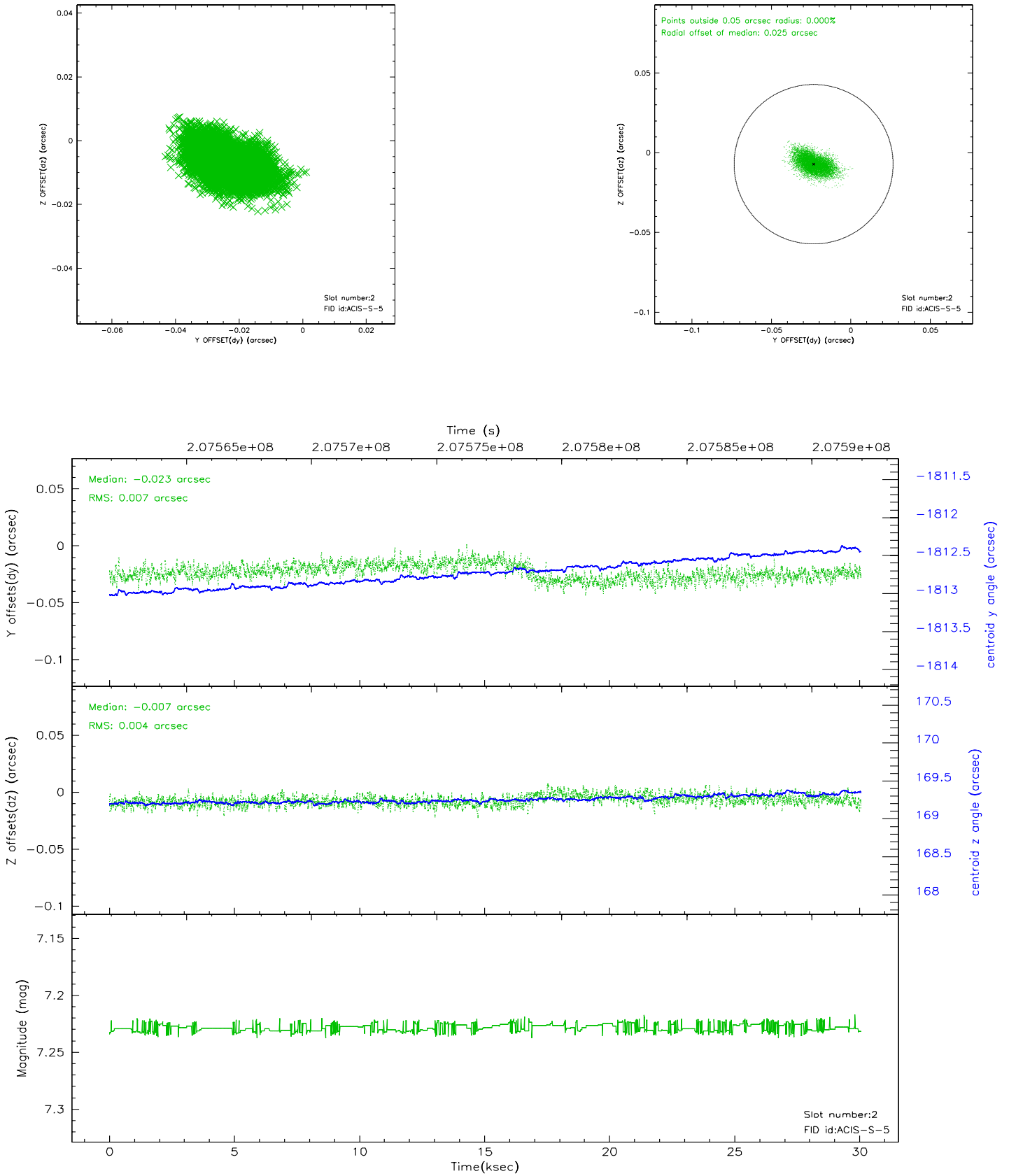
2.5.1 Slot 0



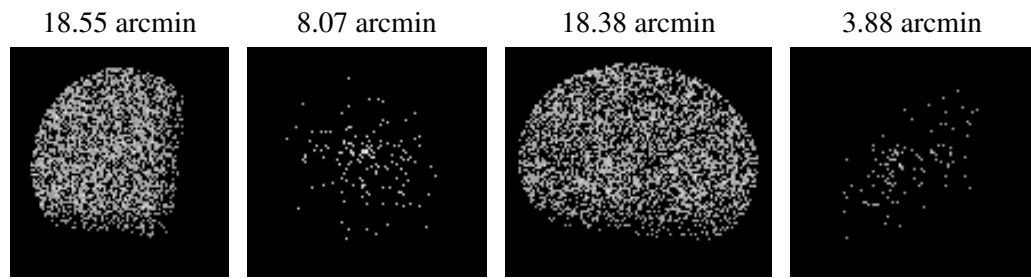
2.5.2 Slot 1



2.5.3 Slot 2



3 Point Sources



A Summary

A.1 Status

V&V Scientist	Beth Sundheim
V&V Date (YYYY-MM-DD)	2006.04.26
V&V Edition	1
V&V Disposition and Status	OK
V&V Charge Time	28.959

A.2 Comments