

V&V Reference Report

L2 ASCDS Version : 8.4.5

Observation 4755 - L2 Version 5
Chandra X-Ray Center

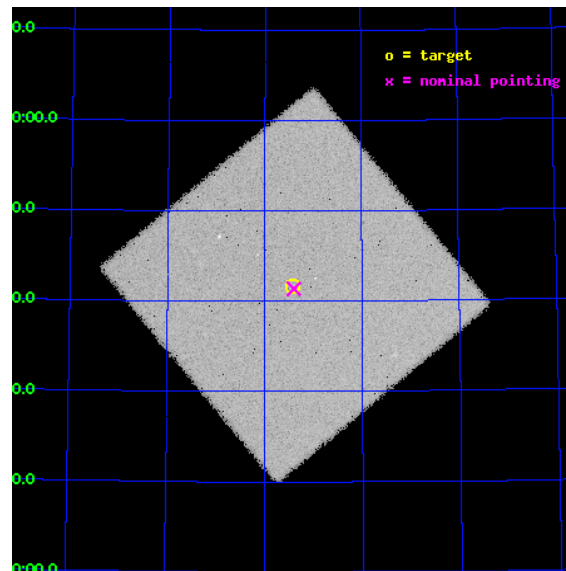
L2 Processing Date : Dec 2 2012

Contents

1	Front	2
2	OBI	3
2.1	OBI	3
2.1.1	Images	3
2.1.2	Parameters	4
2.1.3	Events	4
2.2	Compared Parameters	5
2.3	Aspect	6
2.4	Star Slots	9
2.4.1	Slot 3	9
2.4.2	Slot 4	10
2.4.3	Slot 5	11
2.4.4	Slot 6	12
2.4.5	Slot 7	13
2.5	FID Slots	14
2.5.1	Slot 0	14
2.5.2	Slot 1	15
2.5.3	Slot 2	16
A	Summary	17
A.1	Status	17
A.2	Comments	17

1 Front

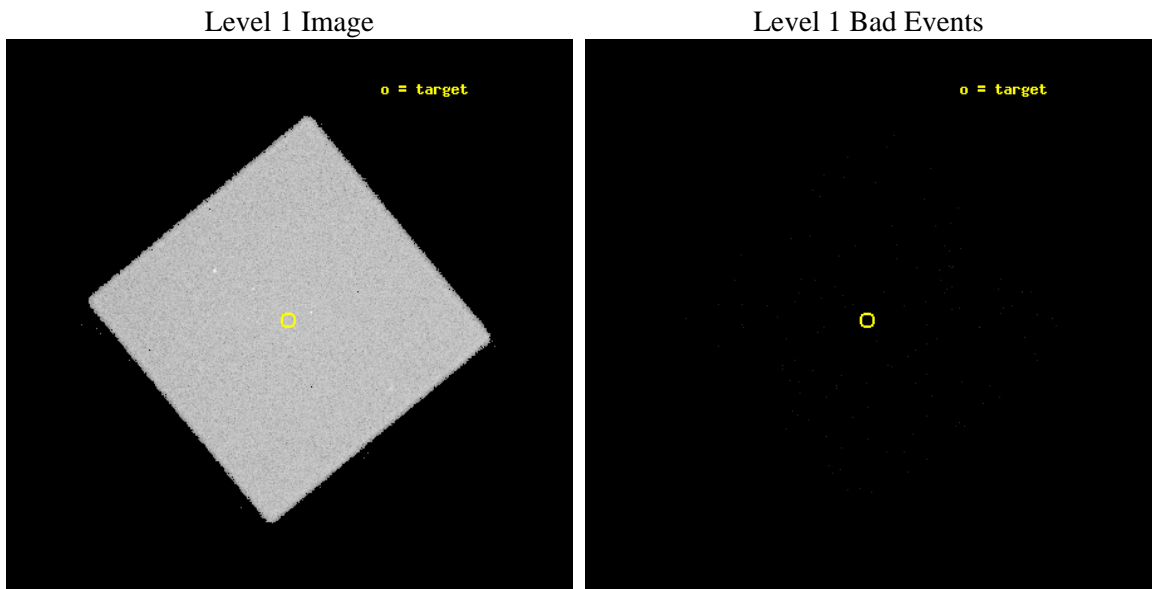
seq_num	600410	Sequence number
obs_id	4755	Observation id
title	DISCRETE X-RAY SOURCES BETWEEN M 81 AND NGC 3077	Proposal title
observer	Professor Martin Ward	Principal investigator
object	NGC3077/M81 FIELD	Source name
ra_targ	150.352917	Observer's specified target RA [deg]
dec_targ	68.693722	Observer's specified target Dec [deg]
ra_nom	150.34960860163	Nominal RA [deg]
dec_nom	68.689728179785	Nominal Dec [deg]
roll_nom	275.34799761779	Nominal Roll [deg]
revision	5	Processing version of data
ontime	9843.3316852748	[s]
liveltime	9779.615625807	Ontime multiplied by DTCOR
l2events	332722	Number of level 2 events



2 OBI

2.1 OBI

2.1.1 Images



2.1.2 Parameters

obi_num	0	Obi number	sched_exp_time	9657.000000	[s] Scheduled observation exposure time
ascdsver	8.4.5	Processing system revision	ontime	9843.3316852748	[s]
caldbver	4.5.2	 	l1events	523772	Number of level 1 events
date	2012-12-02T23:26:01	Date and time of file creation			
revision	5	Processing version of data			

2.1.3 Events

Level 1 Events

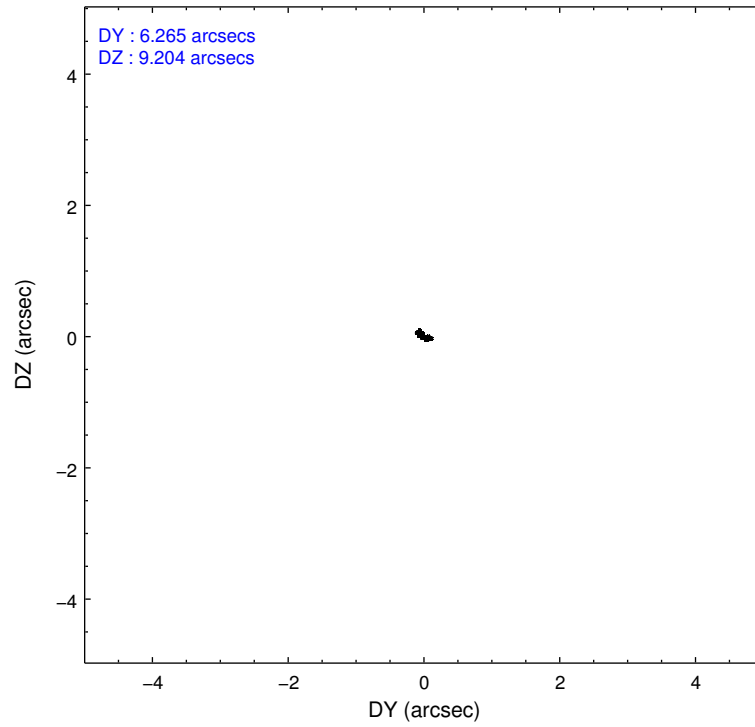
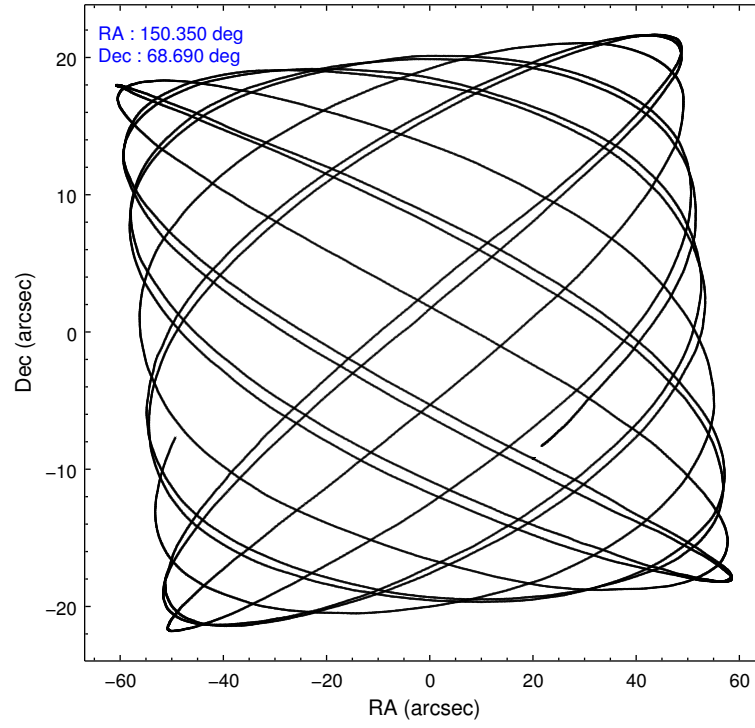
	segment 0
level 1 events	523772
rejected events	25719
rejected %	4%

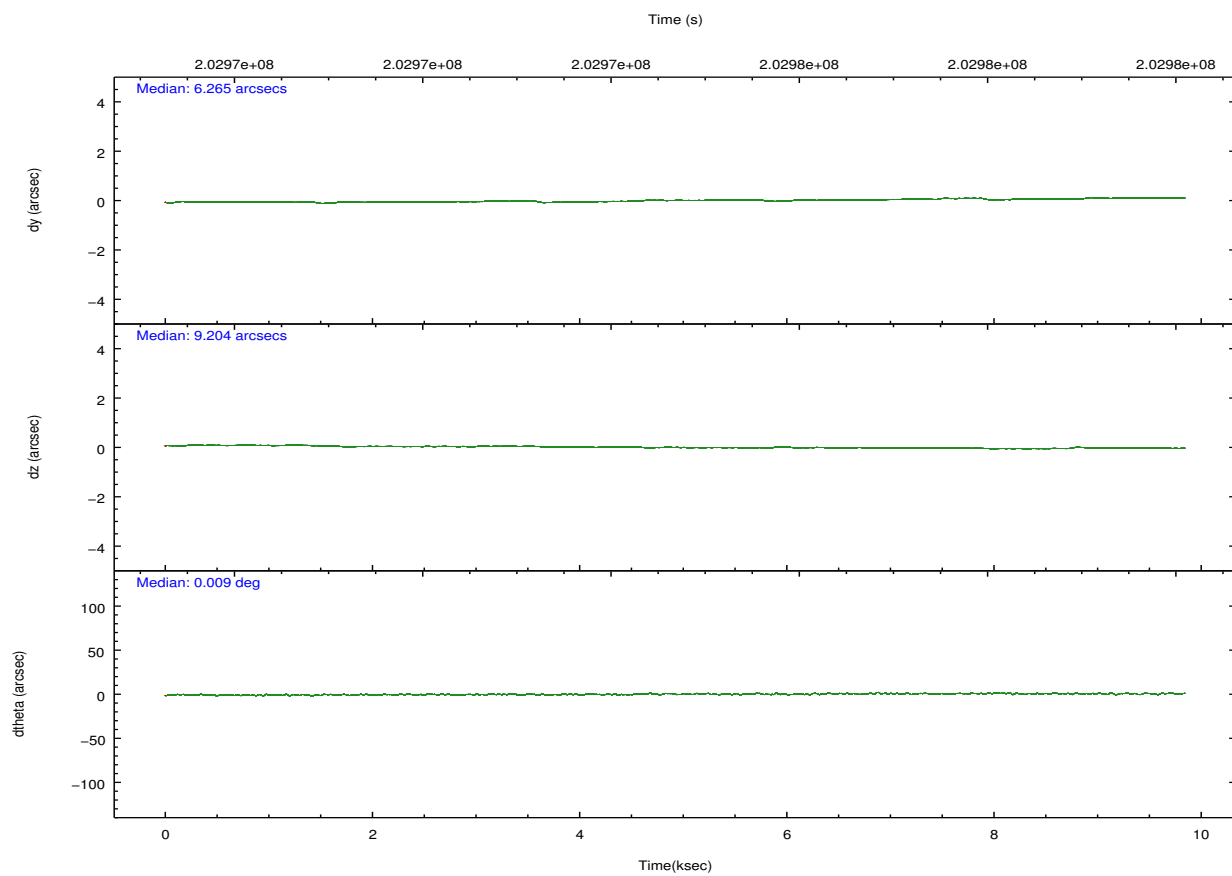
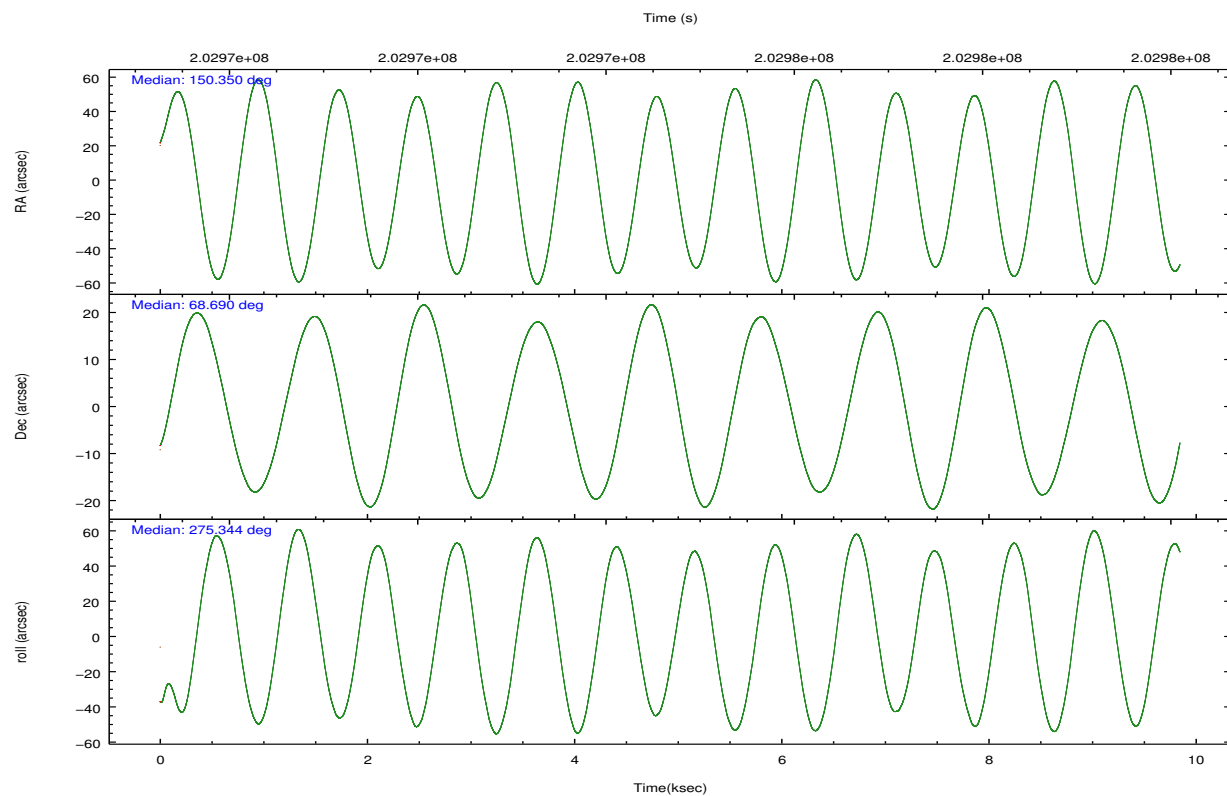
2.2 Compared Parameters

Parameter	Planned	Actual
Instrument	HRC	HRC
Detector	HRC-I	HRC-I
Grating	NONE	NONE
Data mode	OBSERVING	OBSERVING
Observation mode	POINTING	POINTING
[deg] Pointing RA	150.304899	150.349608601632
[deg] Pointing Dec	68.711475	68.68972817978545
[deg] Pointing Roll	275.485191	275.3479976177877
[mm] SIM focus pos	-1.040293	-1.038866356238299
[mm] SIM defocus	0	0.001426264420575141
[mm] SIM translation stage pos	126.985494	126.9829799899862
[mm] SIM translation stage offset	0	0.002508901615314585
[s] Observation start time (MET)	202969946.184000	202969302.86033
Observation start date	2004-06-07T04:31:22	2004-06-07T04:21:42
[s] Observation end time (MET)	202979603.184000	202980448.71082
Observation end date	2004-06-07T07:12:19	2004-06-07T07:27:28

Parameter	Planned	Actual
Obspar format version number	7	7
Obspar file type	PREDICTED	ACTUAL
Obspar update status	NONE	UPDATED

2.3 Aspect



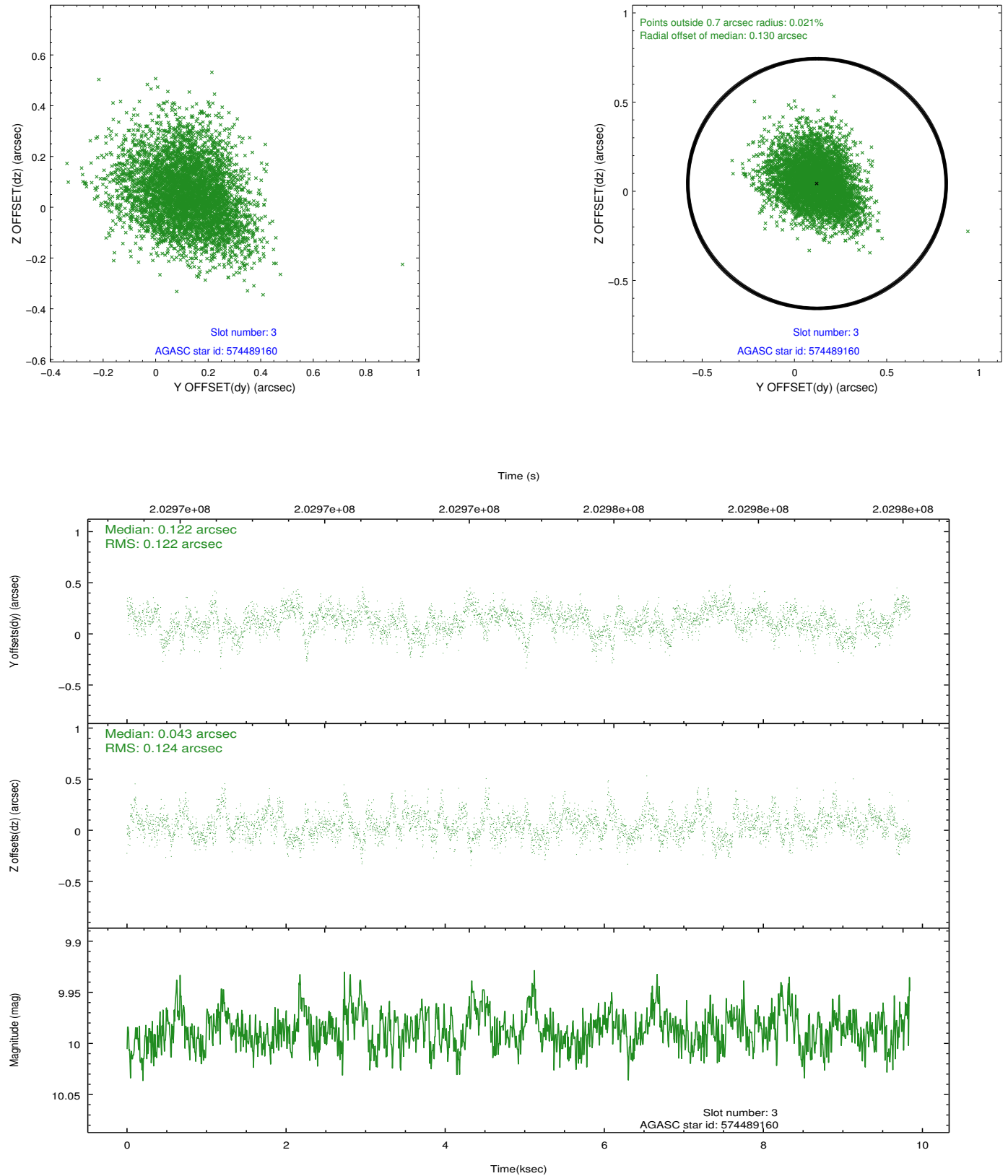


Slot Statistics

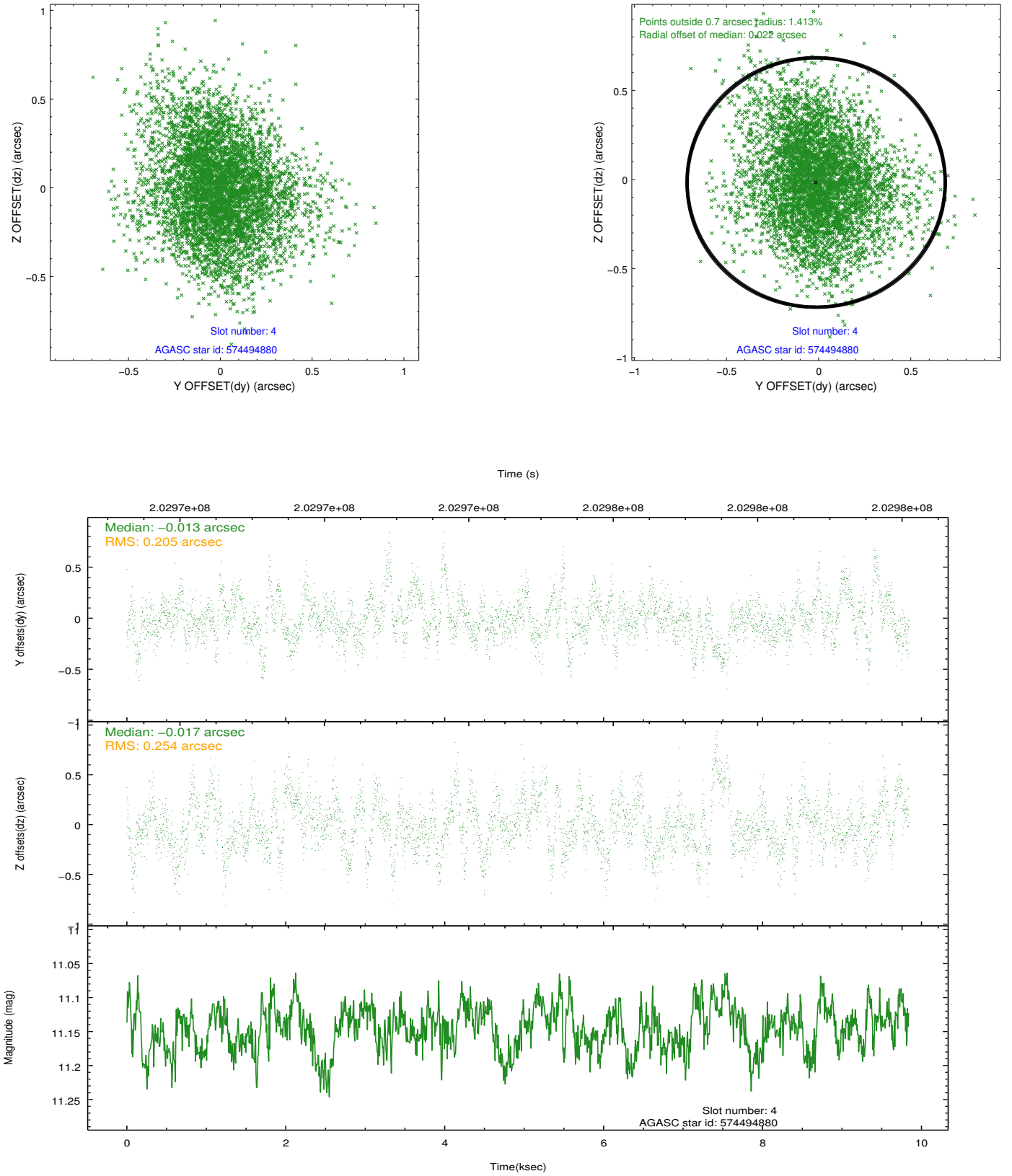
slot	status	id	mag	n_pts	med_dy	med_dz	dr1	dr2	ra	dec	mean_y	mean_z
0	FID	HRC-I-1	6.98	2402	0.017	0.051	0.007	0.011	0.000000	0.000000	-761.82	-1297.07
1	FID	HRC-I-2	7.02	2402	0.085	-0.073	0.006	0.009	0.000000	0.000000	850.56	-1299.31
2	FID	HRC-I-3	7.07	2402	0.017	-0.067	0.006	0.010	0.000000	0.000000	-1189.94	1006.84
3	GUIDE	574489160	9.99	4799	0.122	0.043	0.184	0.306	149.677320	68.172146	1848.84	-1021.16
4	GUIDE	574494880	11.14	4742	-0.013	-0.017	0.345	0.572	149.009874	68.677374	-56.64	-1697.67
5	GUIDE	574496312	10.32	4797	0.124	-0.020	0.176	0.292	149.547505	68.718299	-124.49	-982.52
6	GUIDE	574496360	9.46	4797	-0.122	-0.071	0.115	0.188	150.806604	68.529829	711.70	595.58
7	GUIDE	574489776	10.16	4789	-0.117	0.045	0.175	0.284	148.323662	69.046710	-1485.43	-2419.22

2.4 Star Slots

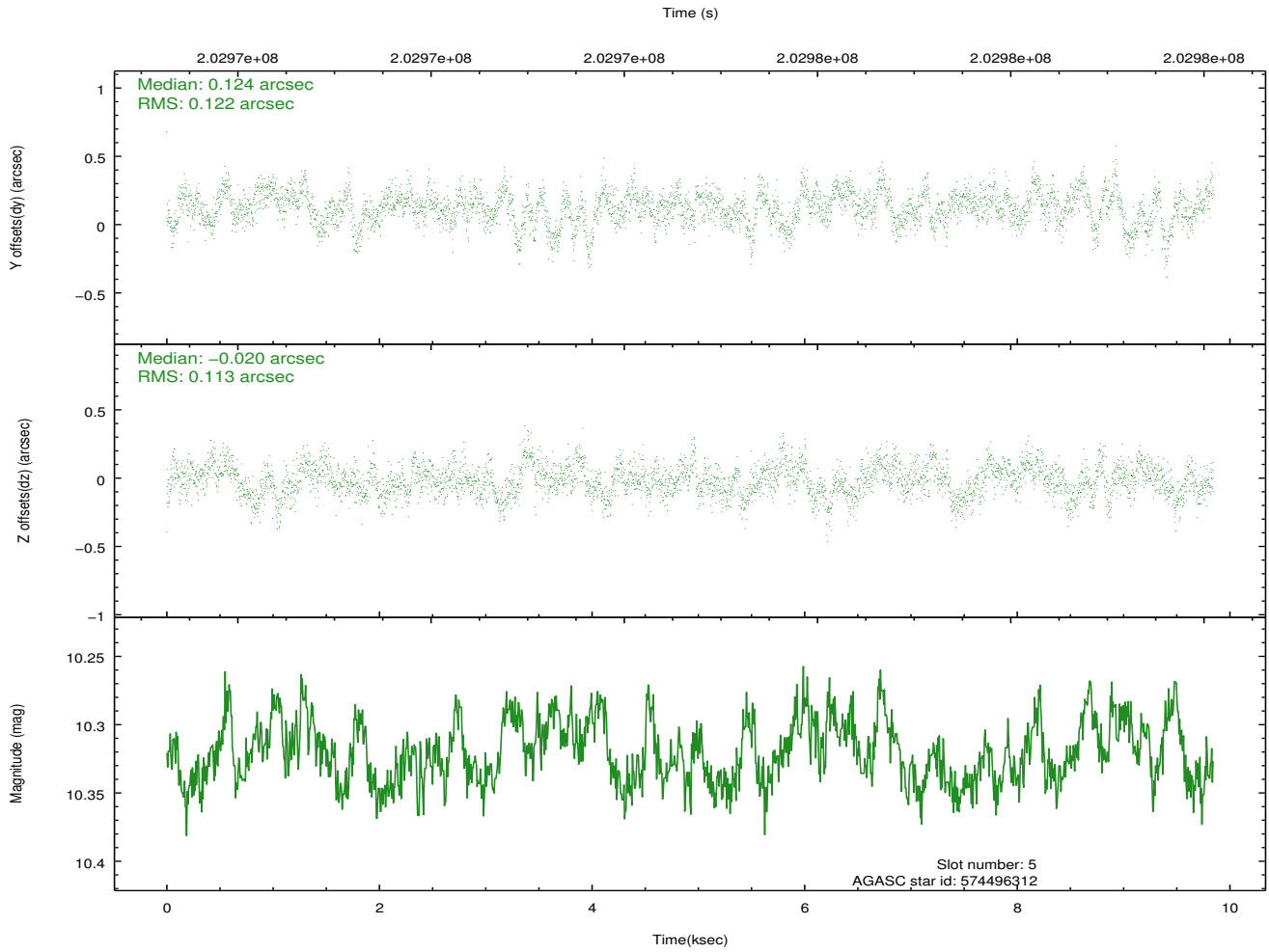
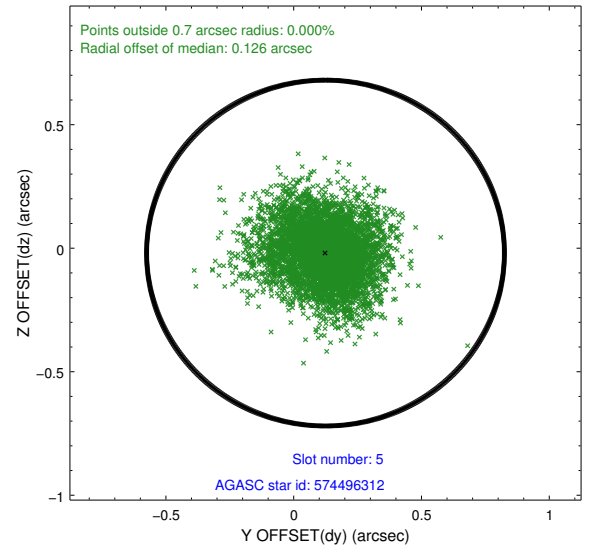
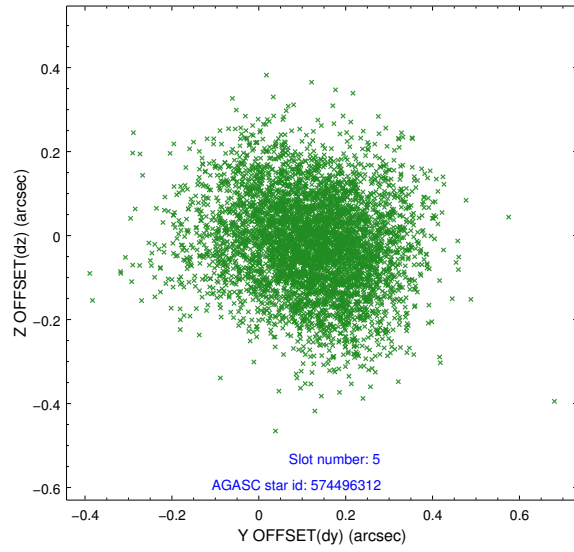
2.4.1 Slot 3



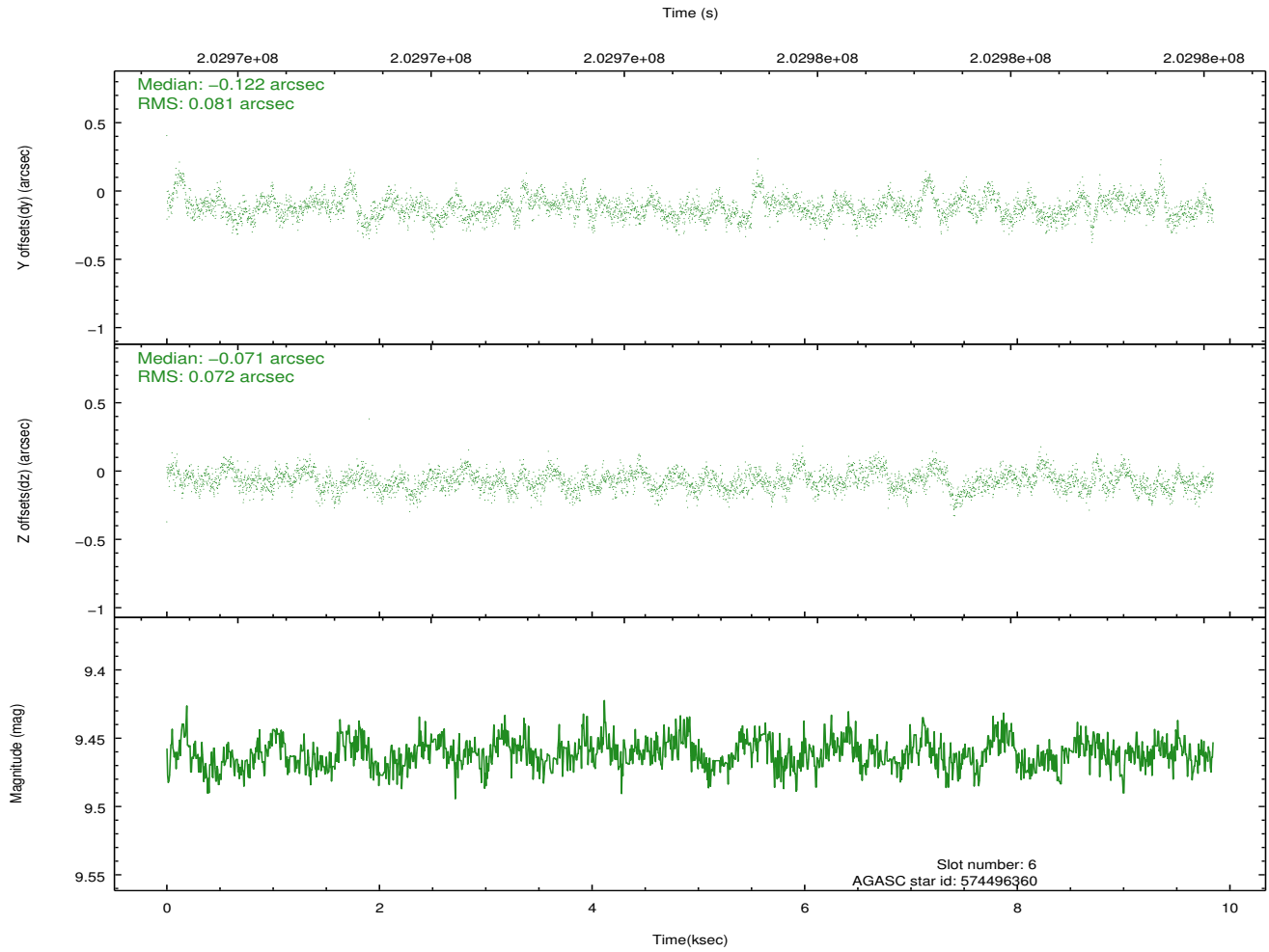
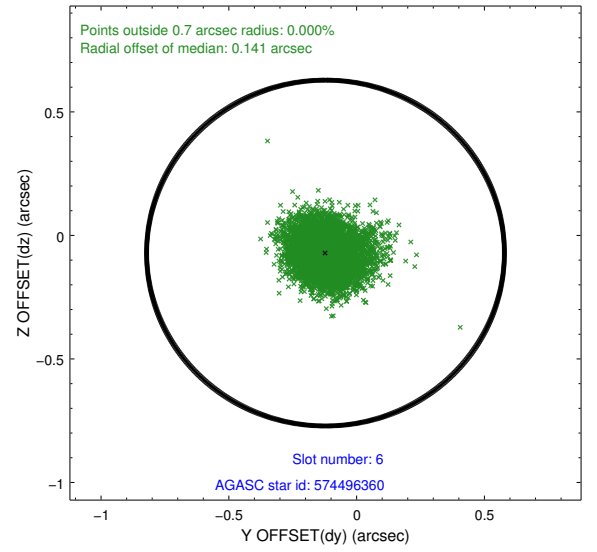
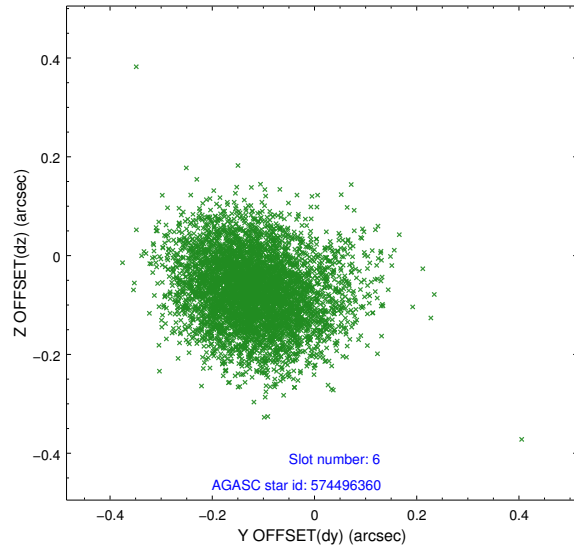
2.4.2 Slot 4



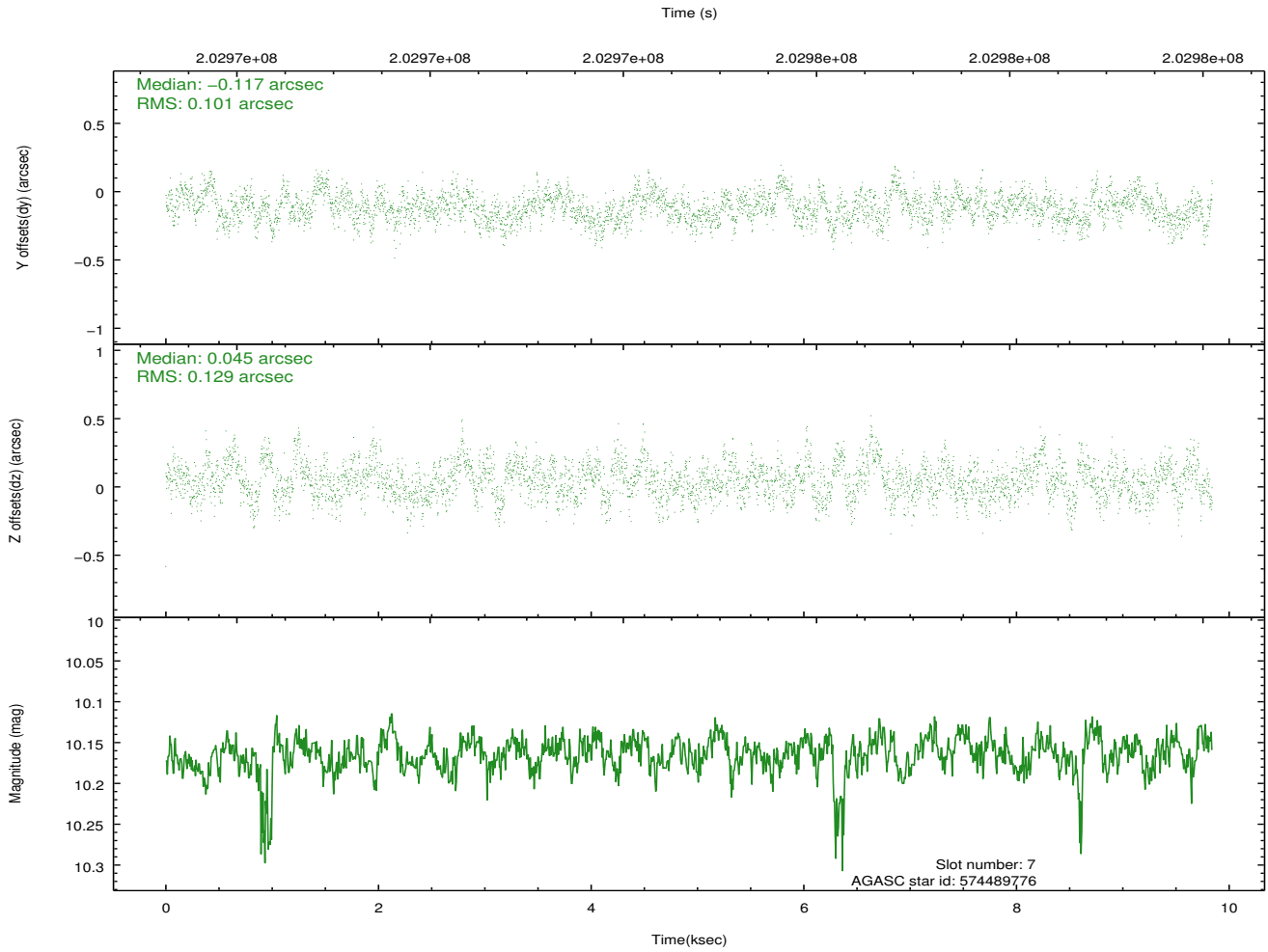
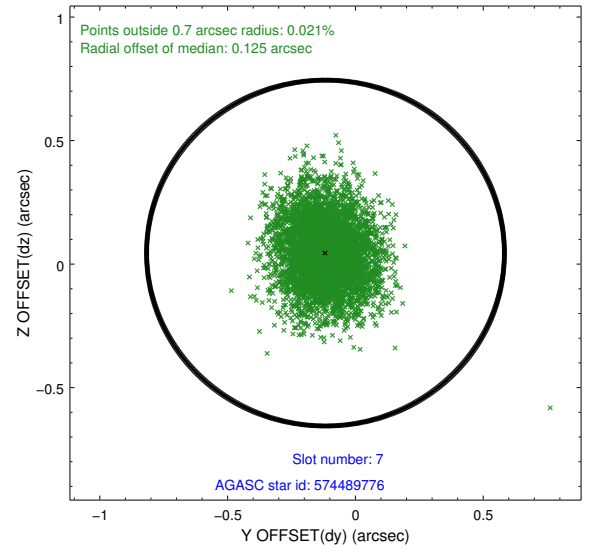
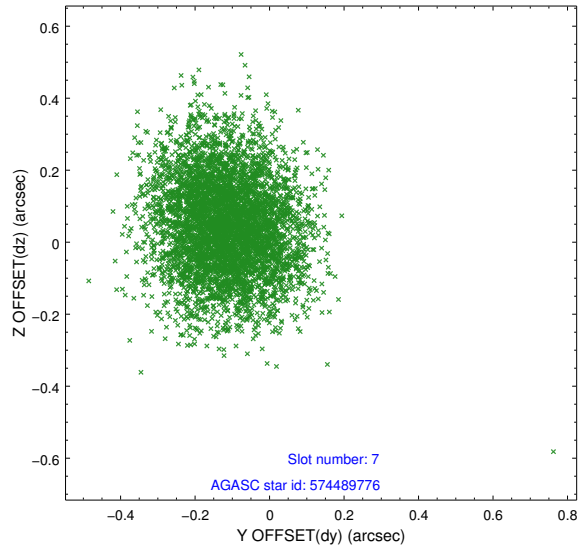
2.4.3 Slot 5



2.4.4 Slot 6

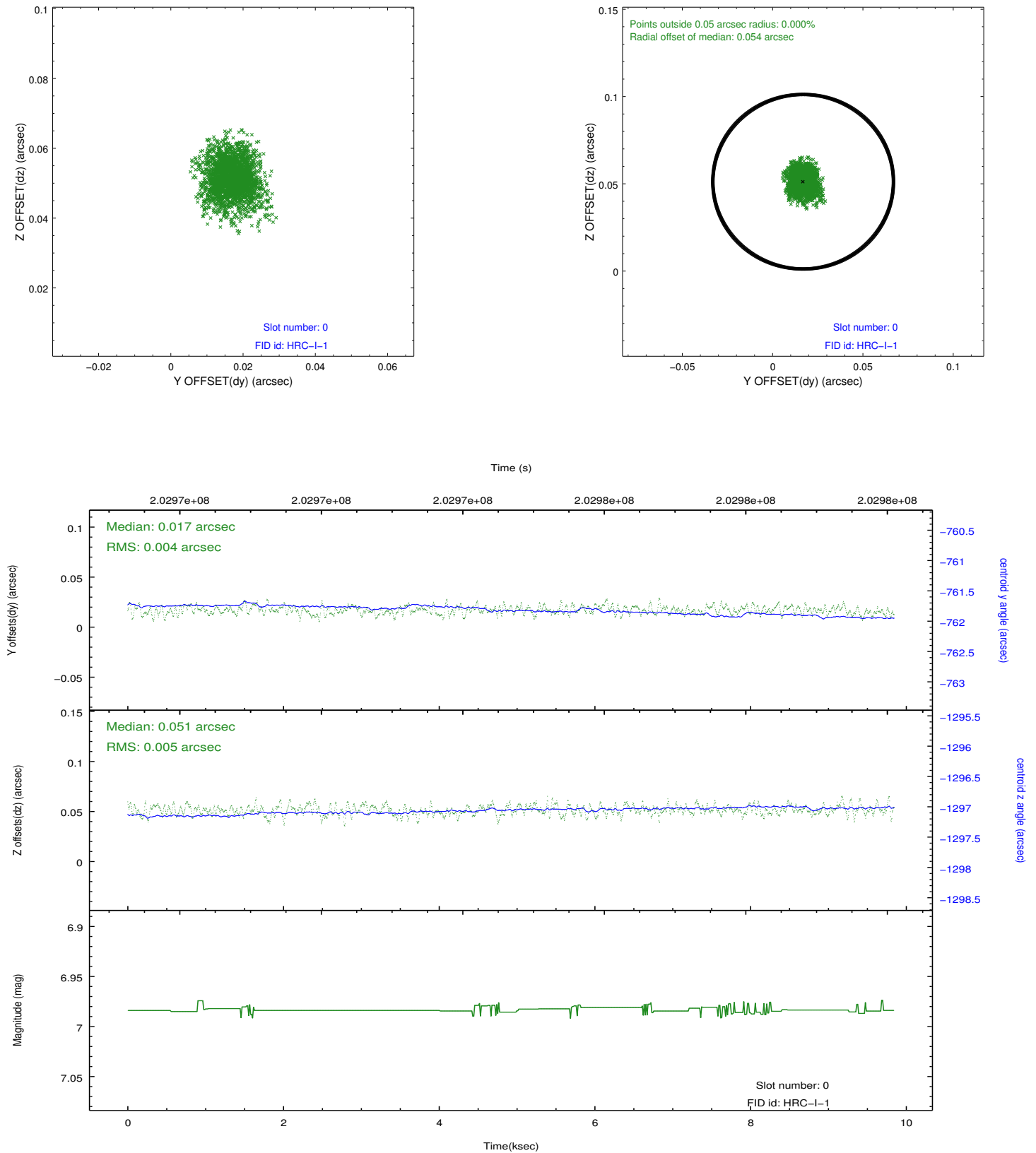


2.4.5 Slot 7

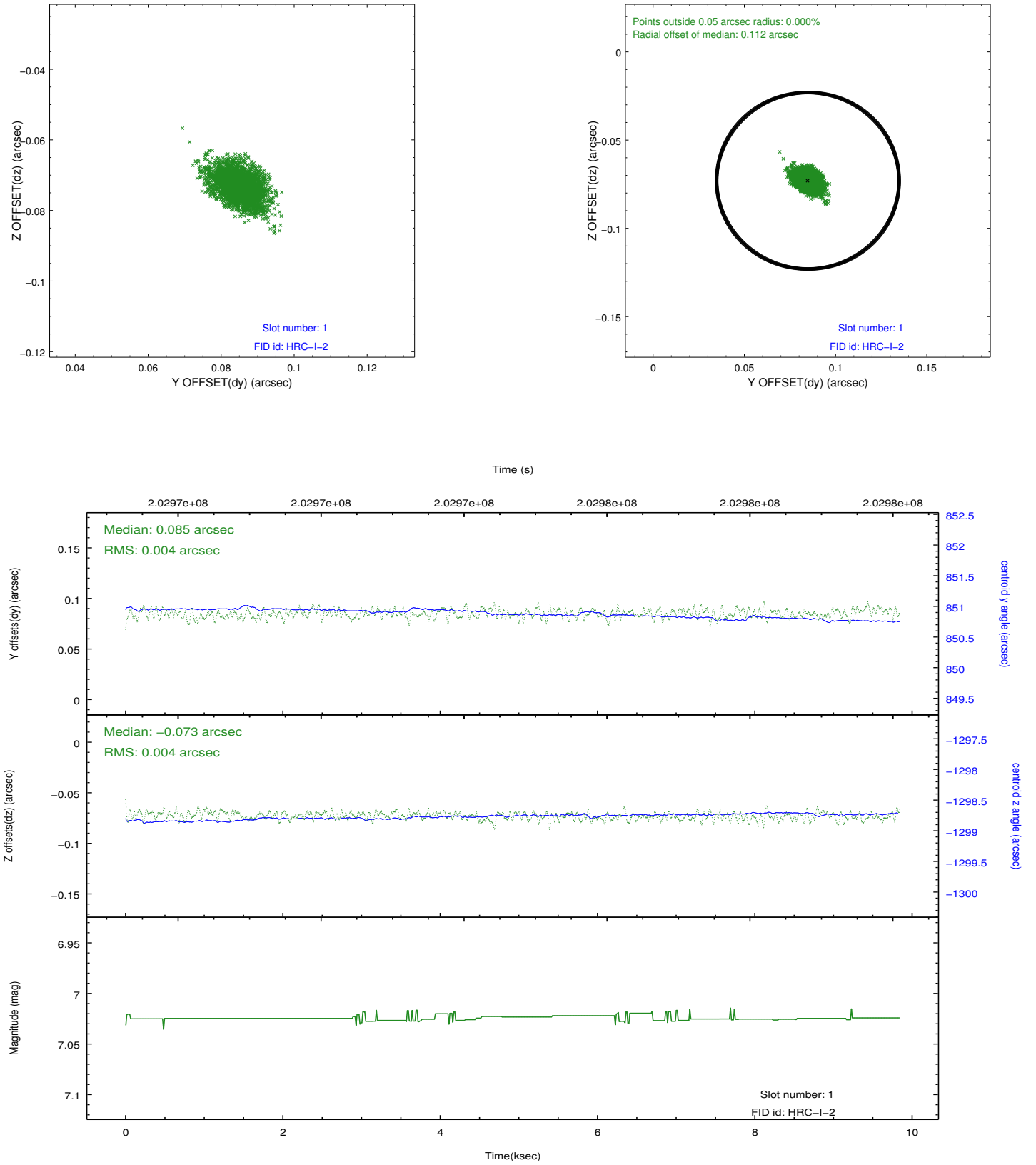


2.5 FID Slots

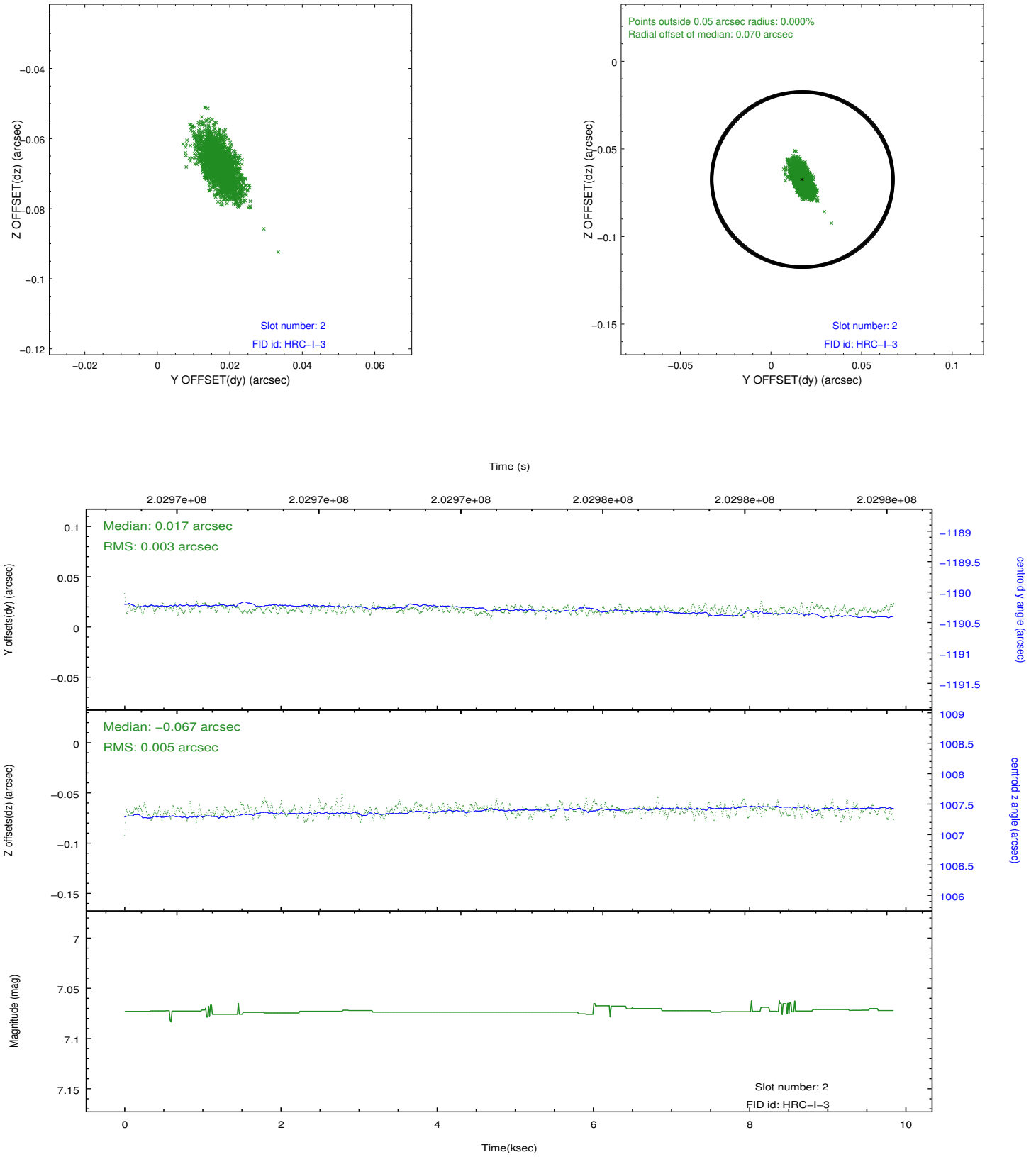
2.5.1 Slot 0



2.5.2 Slot 1



2.5.3 Slot 2



A Summary

A.1 Status

V&V Scientist	Beth Sundheim
V&V Date (YYYY-MM-DD)	2012.12.14
V&V Edition	1
V&V Disposition and Status	OK
V&V Charge Time	9.843

A.2 Comments

Joint proposal with XMM.