

V&V Reference Report

L2 ASCDS Version : 7.6.7.2

Observation 4749 - L2 Version 001
Chandra X-Ray Center

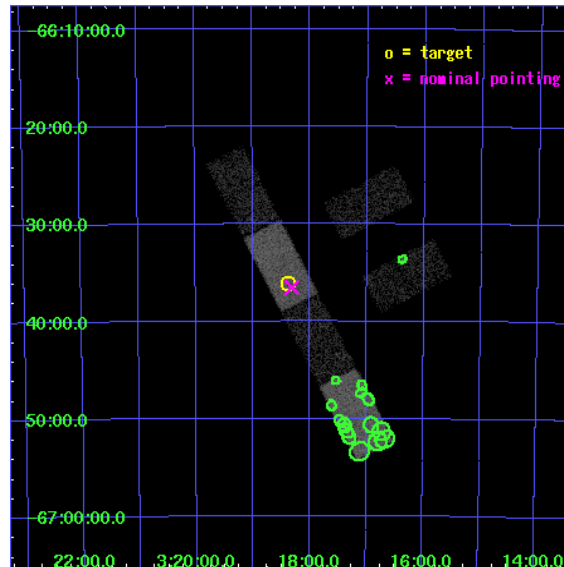
L2 Processing Date : May 29 2006

Contents

1	Front	2
2	OBI	3
2.1	OBI	3
2.1.1	Images	3
2.1.2	Bias	3
2.1.3	Parameters	4
2.1.4	Events	4
2.2	Compared Parameters	5
2.3	Aspect	6
2.4	Star Slots	9
2.4.1	Slot 3	9
2.4.2	Slot 4	10
2.4.3	Slot 5	11
2.4.4	Slot 6	12
2.4.5	Slot 7	13
2.5	FID Slots	14
2.5.1	Slot 0	14
2.5.2	Slot 1	15
2.5.3	Slot 2	16
3	Point Sources	17
A	Summary	18
A.1	Status	18
A.2	Comments	18

1 Front

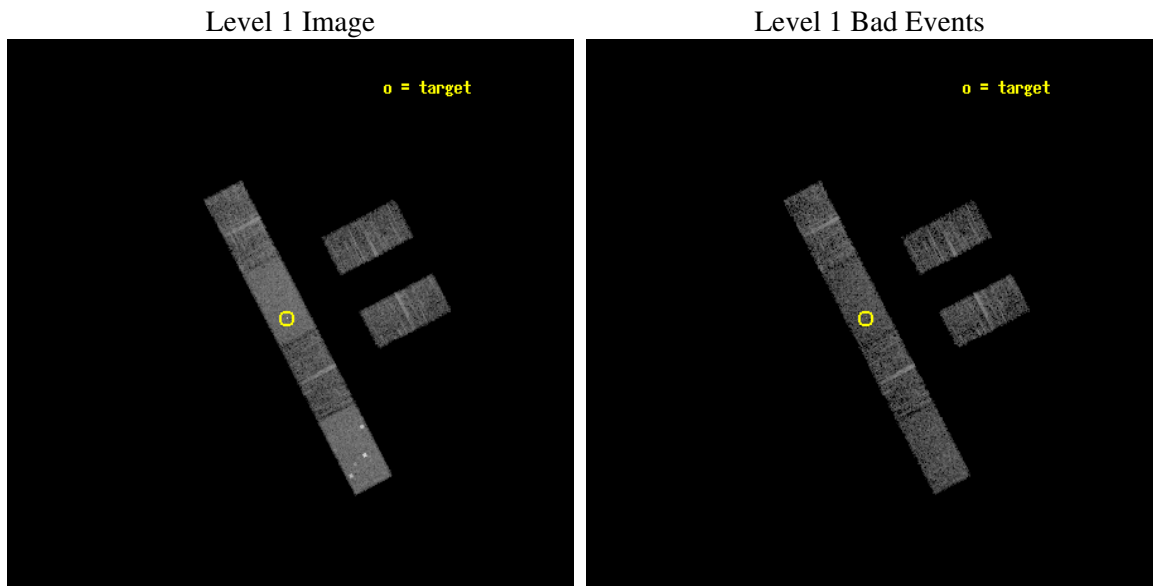
seq_num	600404
obs_id	4749
title	Observations of Intermediate Mass Black Hole Candidate Ultra-Luminous X-ray Sources
observer	Dr Jon Miller
object	NGC 1313 X-2 Obs 1
dtcycle	0
cycle	P
ra_targ	49.592917
dec_targ	-66.601028
ra_nom	49.578158952017
dec_nom	-66.608810562324
roll_nom	242.56466277558
revision	2
ontime	5337.0000353456
livetime	5218.0289747219
ontime2	5337.0000353456
ontime3	5337.0000353456
ontime5	5337.0000353456
ontime6	5337.0000353456
ontime7	5337.0000353456
ontime8	5337.0000353456
l2events	42365



2 OBI

2.1 OBI

2.1.1 Images

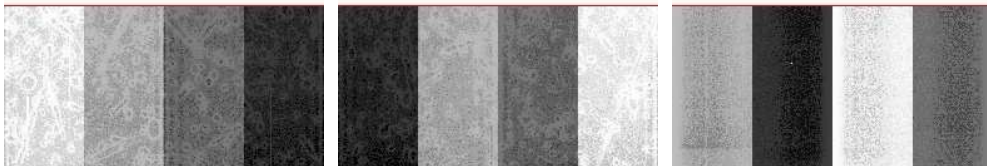


2.1.2 Bias

Chip 2

Chip 3

Chip 5



Chip 6

Chip 7

Chip 8



2.1.3 Parameters

obi_num	1
ascdsver	7.6.7.2
caldsver	3.2.2
date	2006-05-29T10:18:31
revision	2

sched_exp_time	5000.000000
ontime	5405.231567204
ontime2	5405.231567204
ontime3	5405.231567204
ontime5	5405.231567204
ontime6	5405.231567204
ontime7	5405.231567204
ontime8	5405.231567204
llevents	154597

2.1.4 Events

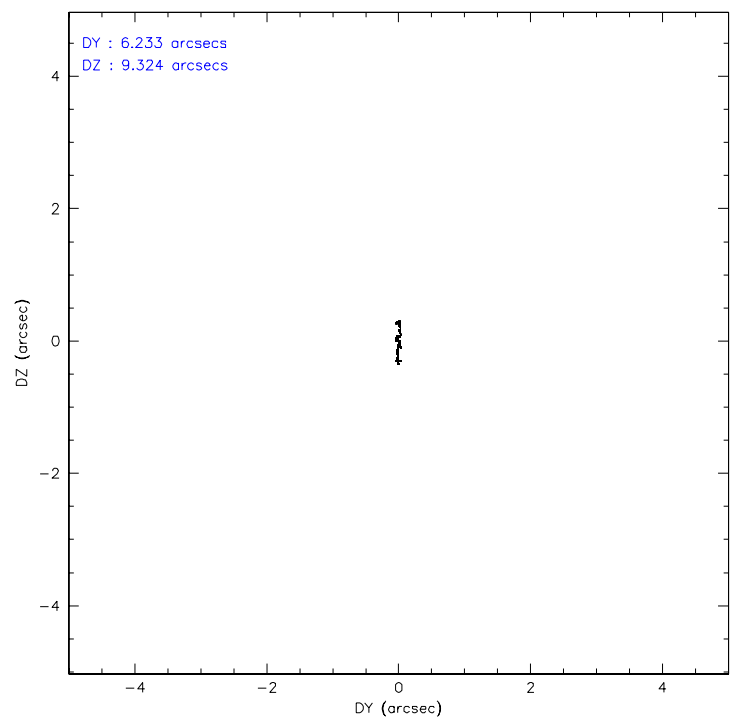
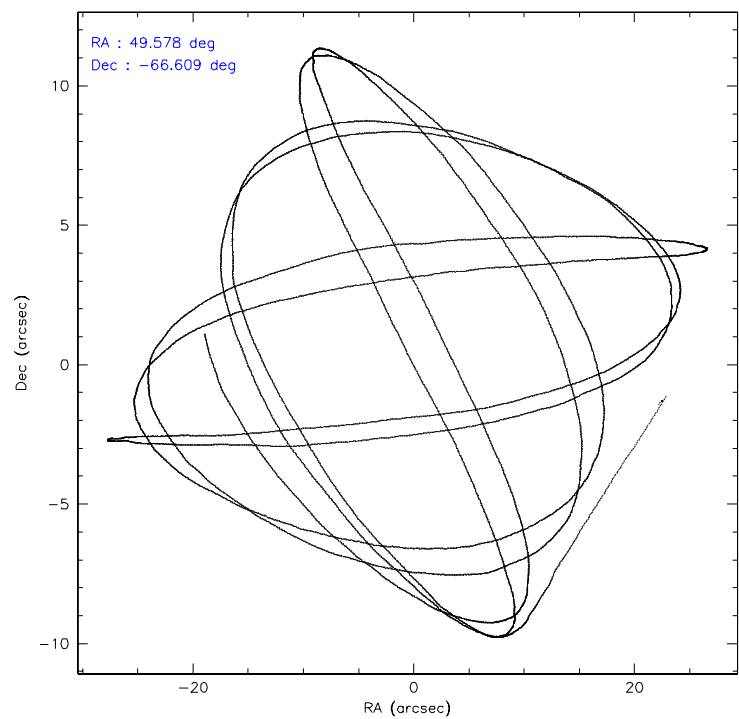
	ccd 2	ccd 3	ccd 5	ccd 6	ccd 7	ccd 8
level 1 events	19810	18270	37922	19999	33125	25471
rejected events	17265	16036	16646	17227	16591	19966
rejected %	87%	87%	43%	86%	50%	78%

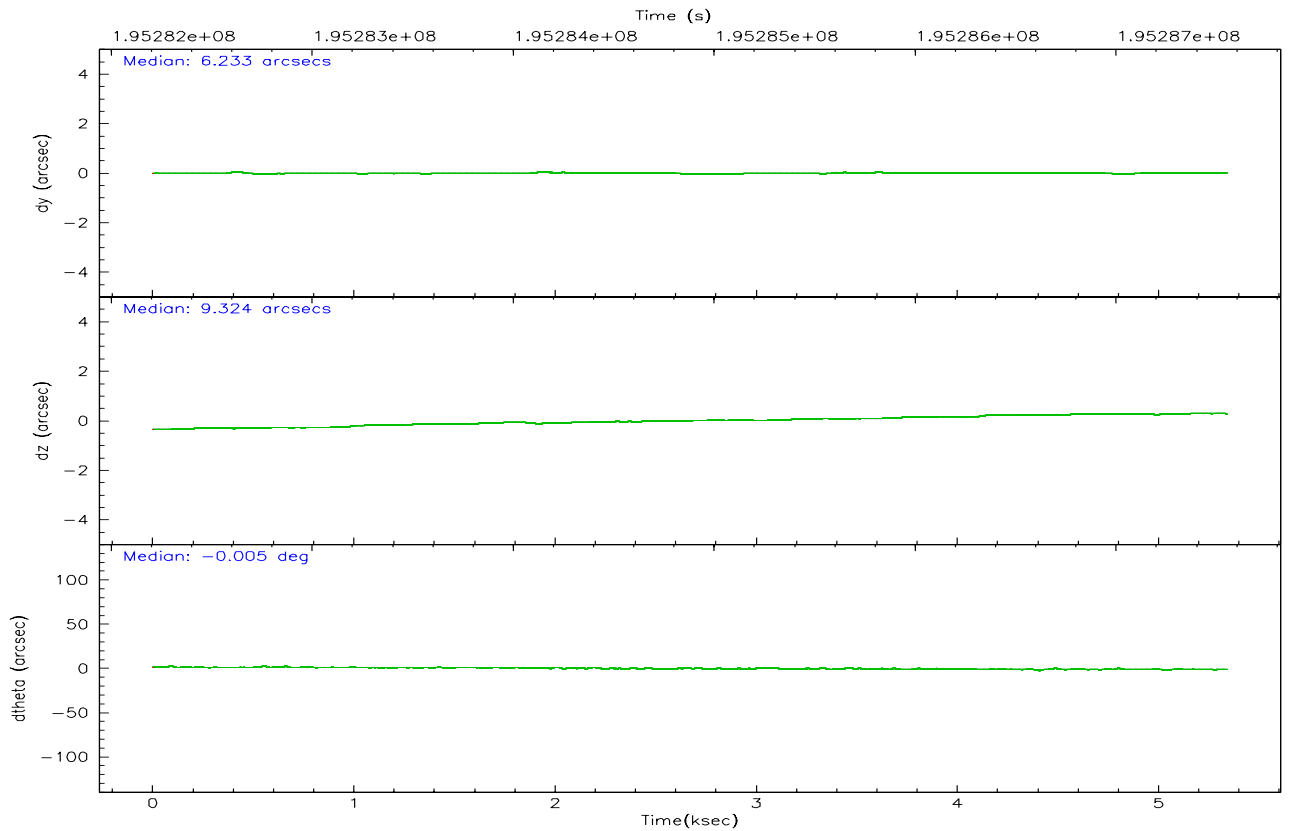
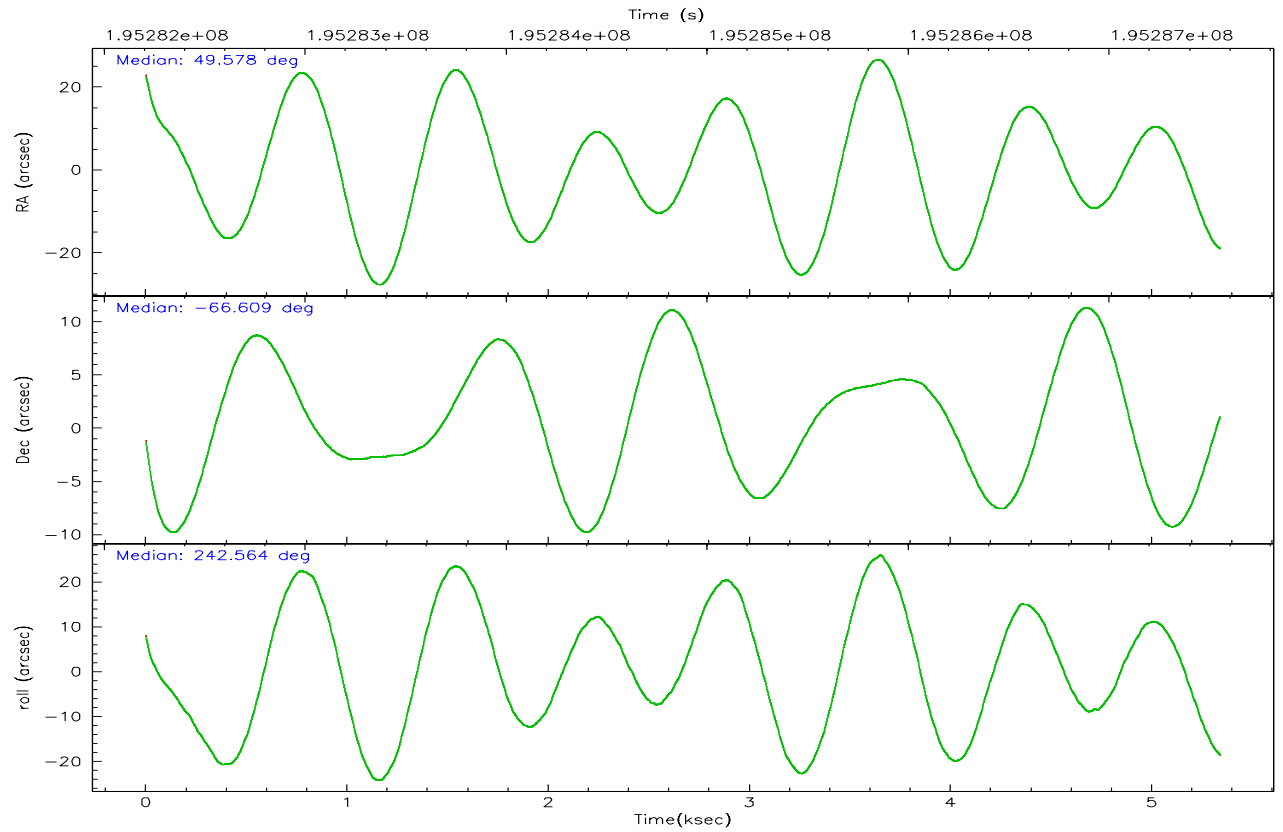
	ccd 2	ccd 3	ccd 5	ccd 6	ccd 7	ccd 8
grade 0 events	1177	1001	4638	1299	1492	1965
	5%	5%	12%	6%	4%	7%
grade 1 events	14	4	55	2	19	13
	0%	0%	0%	0%	0%	0%
grade 2 events	466	399	6290	537	3920	1106
	2%	2%	16%	2%	11%	4%
grade 3 events	256	256	572	243	1077	591
	1%	1%	1%	1%	3%	2%
grade 4 events	296	254	518	289	1004	515
	1%	1%	1%	1%	3%	2%
grade 5 events	760	787	1421	888	1800	1110
	3%	4%	3%	4%	5%	4%
grade 6 events	372	350	9472	432	9180	1368
	1%	1%	24%	2%	27%	5%
grade 7 events	16469	15219	14956	16309	14633	18803
	83%	83%	39%	81%	44%	73%

2.2 Compared Parameters

Parameter	Planned	Actual	Parameter	Planned	Actual
Instrument	ACIS	ACIS	Obspar format version number	6	6
Detector	ACIS-235678	ACIS-235678	Obspar file type	PREDICTED	ACTUAL
Grating	NONE	NONE	Obspar update status	NONE	UPDATED
Data mode	FAINT	FAINT	On-chip summing requested	N	N
Observation mode	POINTING	POINTING	Subarray requested	1/2	1/2
Pointing RA	49.574081	49.57815895201706	Subarray start row	0	257
Pointing Dec	-66.581522	-66.60881056232368	Subarray row count	1024	512
Pointing Roll	242.404301	242.5646627755793	Alternating exposures requested	N	N
SIM focus pos (mm)	-0.684267	-0.6828225247311905	Primary exposure time	0.000000	1.8
SIM defocus (mm)	0	0.001444936568705701			
SIM translation stage pos (mm)	-190.132523	-190.1425803651734			
SIM translation stage offset (mm)	0	0.01005778216563158			
Observation start time	195282550.184000	195281512.95919			
Observation start date	2004-03-10T05:08:06	2004-03-10T04:51:52			
Observation end time	195287550.184000	195288148.29698			
Observation end date	2004-03-10T06:31:26	2004-03-10T06:42:28			
Read mode	TIMED	TIMED			

2.3 Aspect



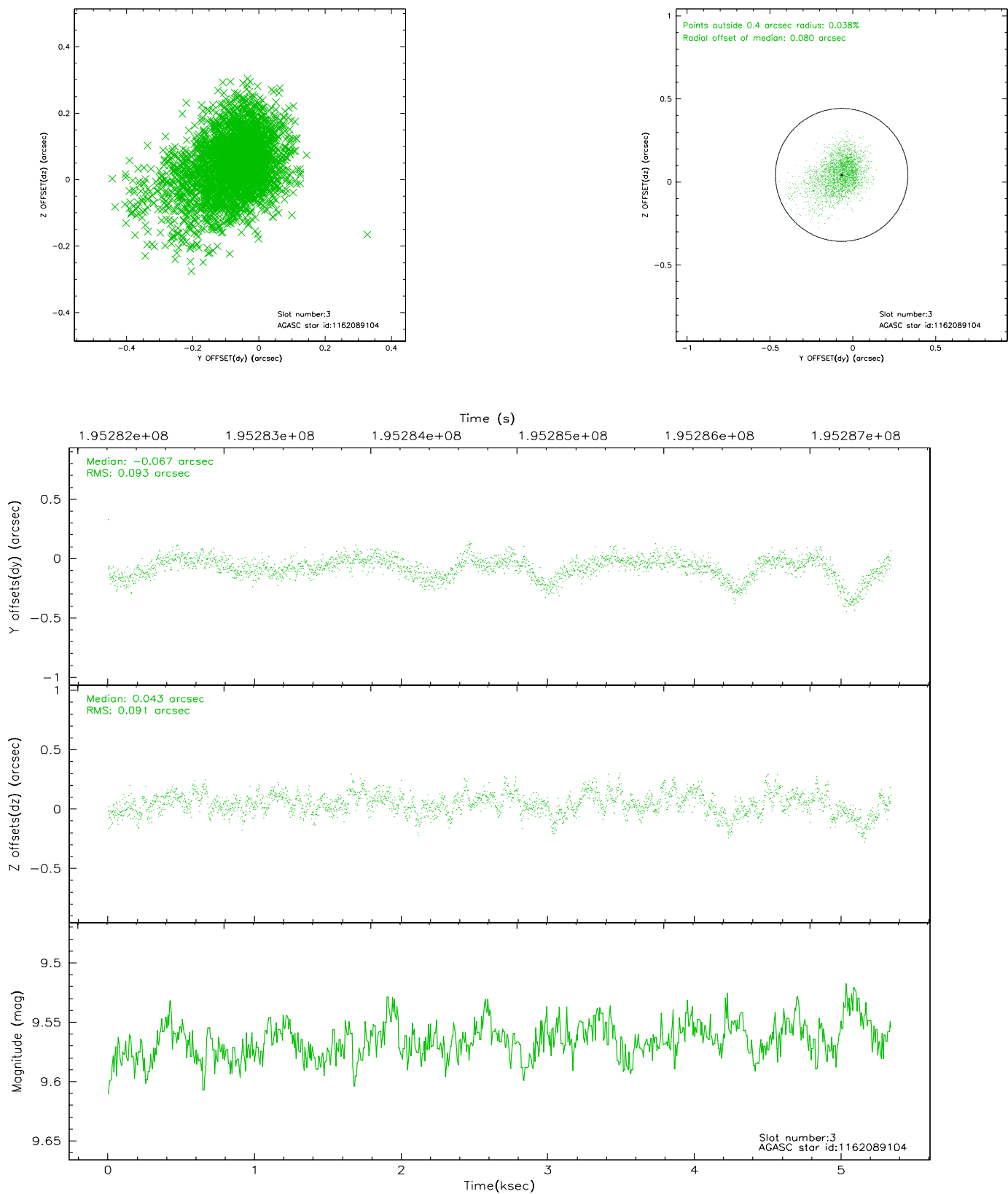


Slot Statistics

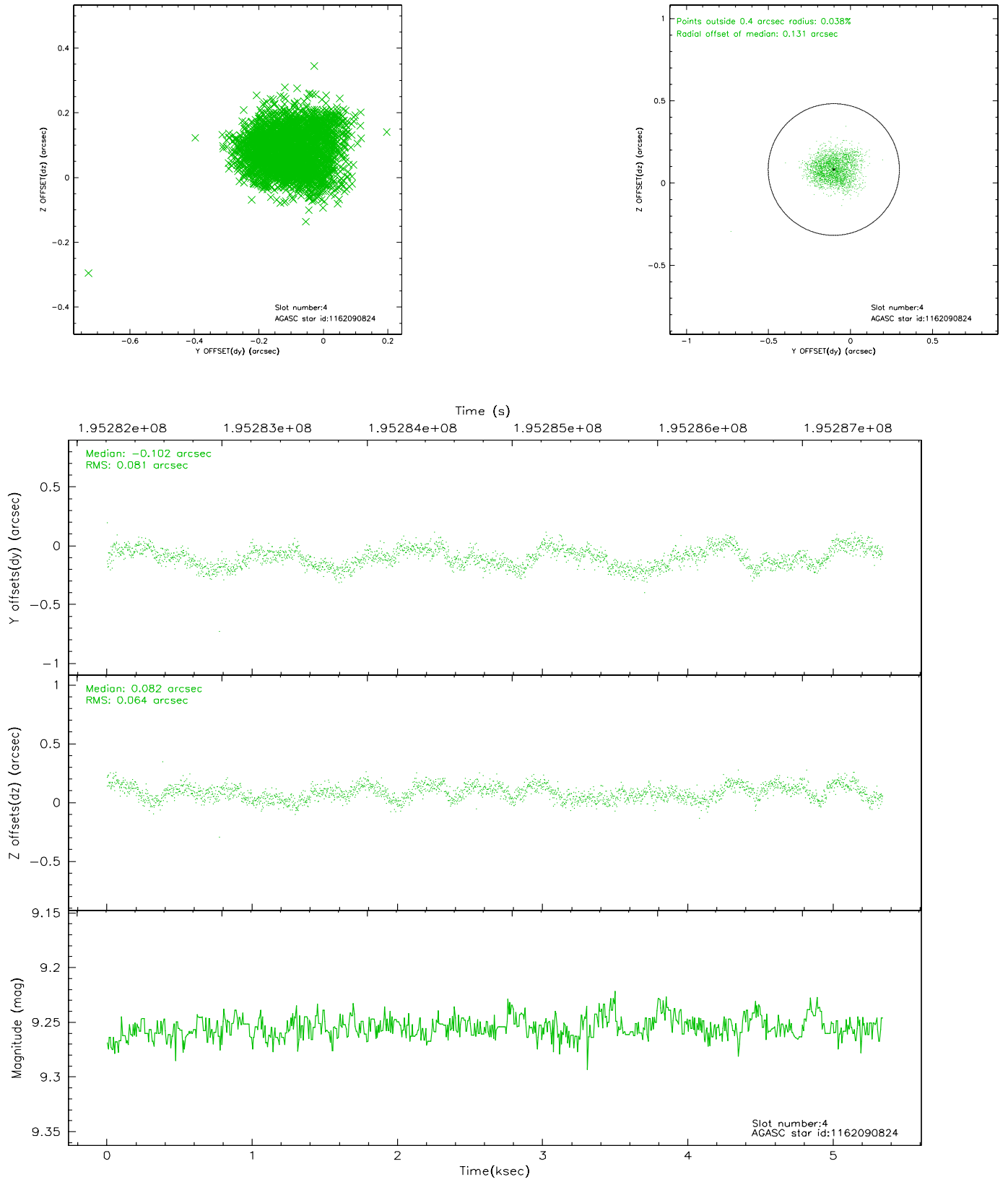
slot	status	id	mag	n_pts	med_dy	med_dz	dr1	dr2	ra	dec	mean_y	mean_z
0	FID	ACIS-S-1	7.19	1303	-0.004	0.013	0.009	0.015	0.000000	0.000000	937.05	-1726.13
1	FID	ACIS-S-4	7.20	1303	0.026	-0.003	0.007	0.011	0.000000	0.000000	2155.13	176.84
2	FID	ACIS-S-5	7.23	1302	-0.050	0.002	0.007	0.012	0.000000	0.000000	-1810.40	171.75
3	GUIDE	1162089104	9.57	2605	-0.067	0.043	0.131	0.234	48.422126	-66.410699	237.38	-1748.39
4	GUIDE	1162090824	9.26	2605	-0.102	0.082	0.112	0.170	48.677982	-66.885202	1563.74	-612.26
5	GUIDE	1162094224	9.72	2604	-0.028	-0.114	0.091	0.143	49.638584	-66.701903	342.31	281.84
6	GUIDE	1162095544	10.19	2601	0.057	-0.109	0.159	0.246	48.846024	-66.171463	-812.03	-1619.37
7	GUIDE	1162088248	7.58	2605	0.148	0.100	0.063	0.110	49.751966	-65.888113	-2333.15	-924.88

2.4 Star Slots

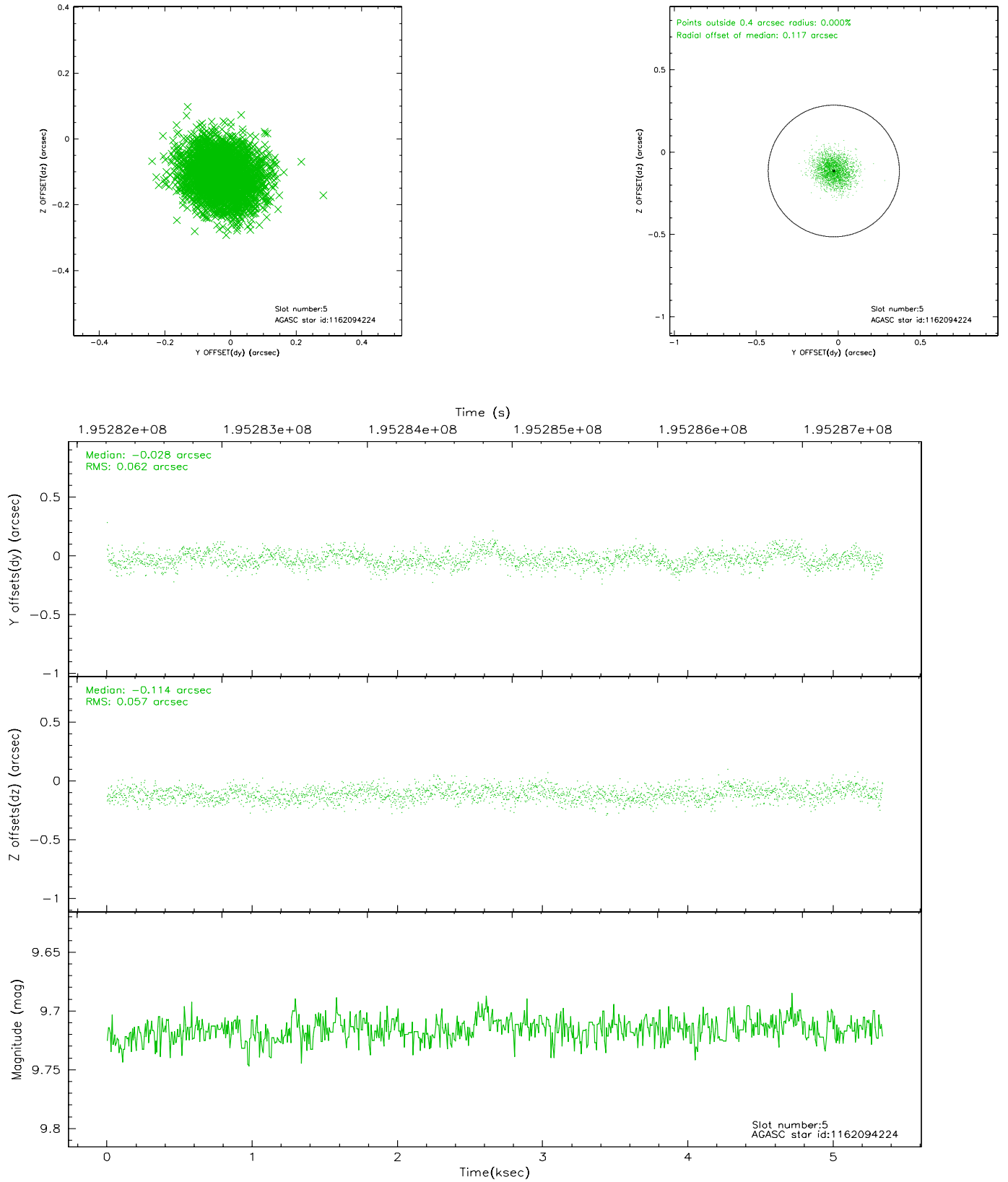
2.4.1 Slot 3



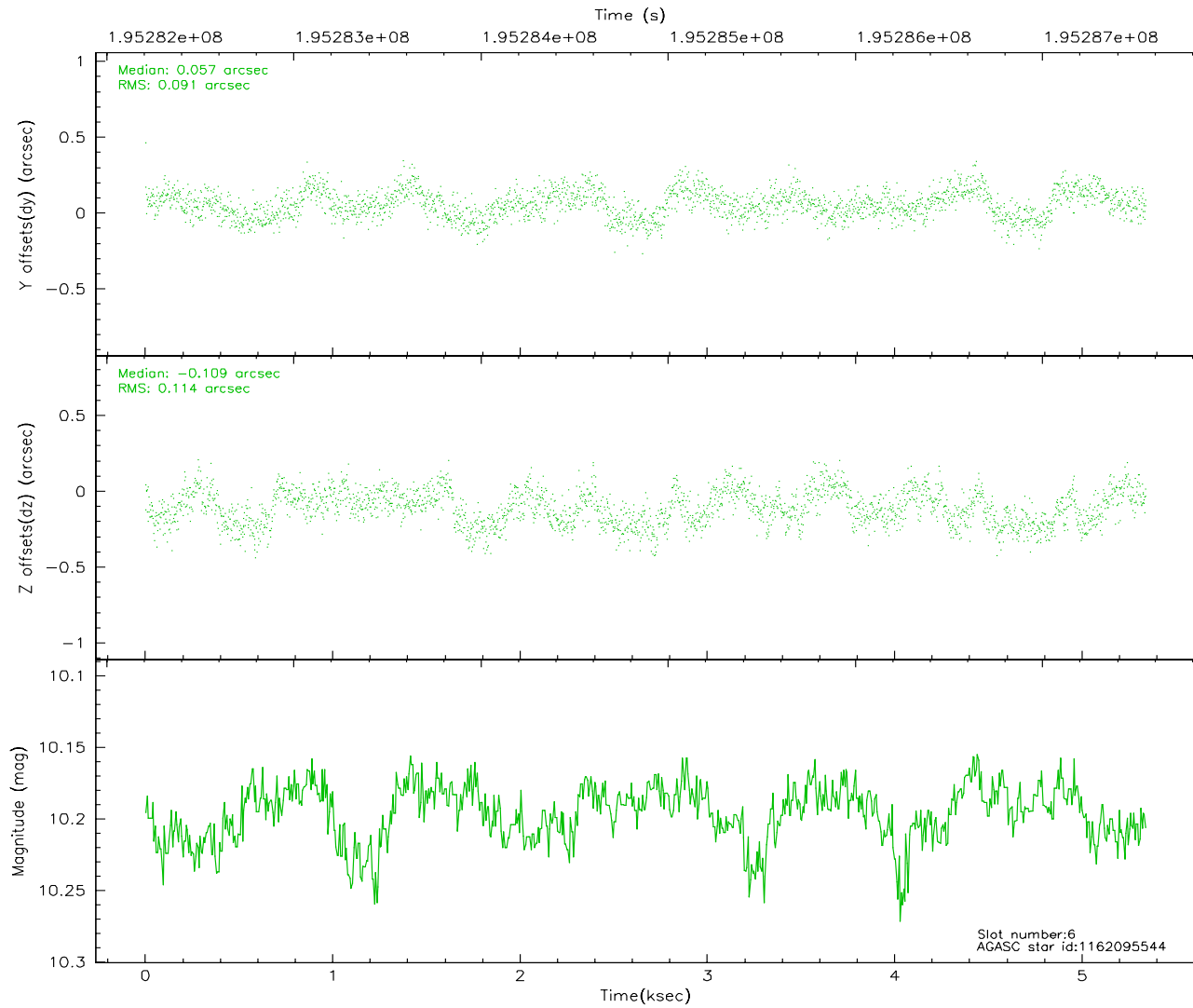
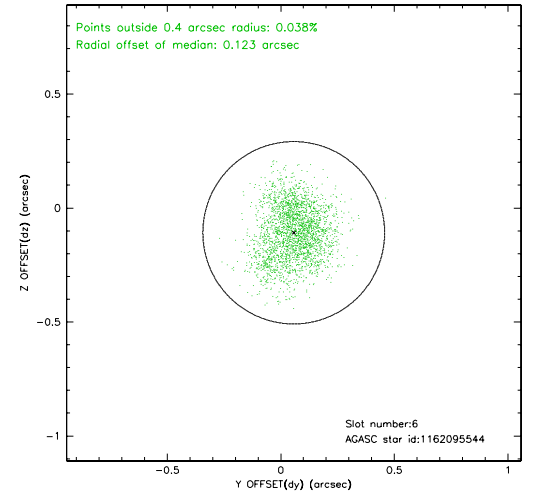
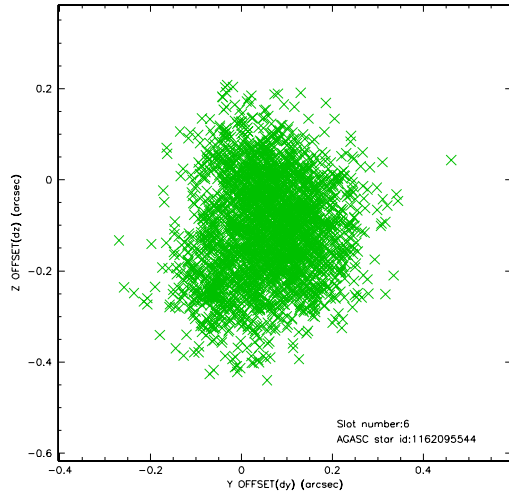
2.4.2 Slot 4



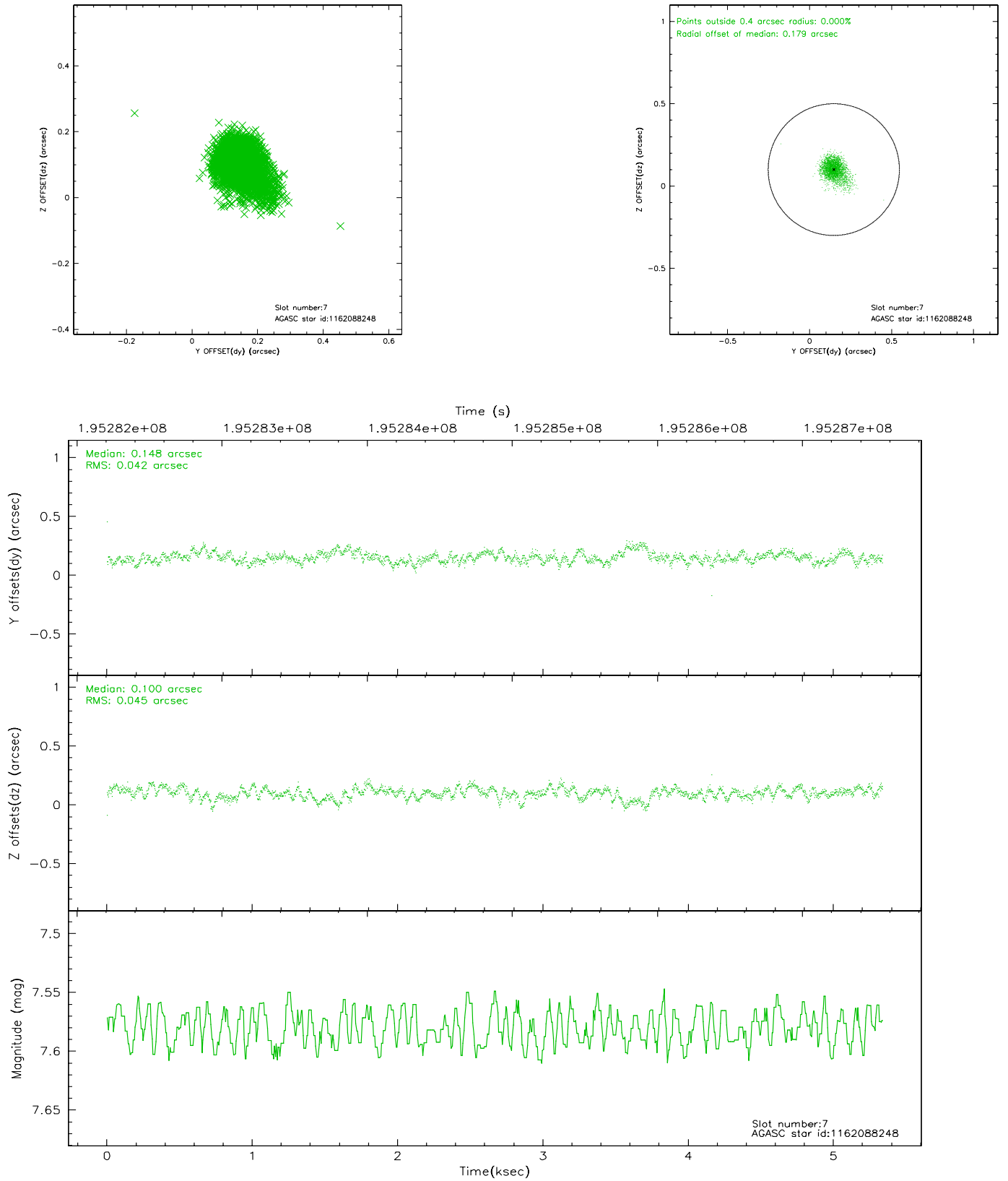
2.4.3 Slot 5



2.4.4 Slot 6

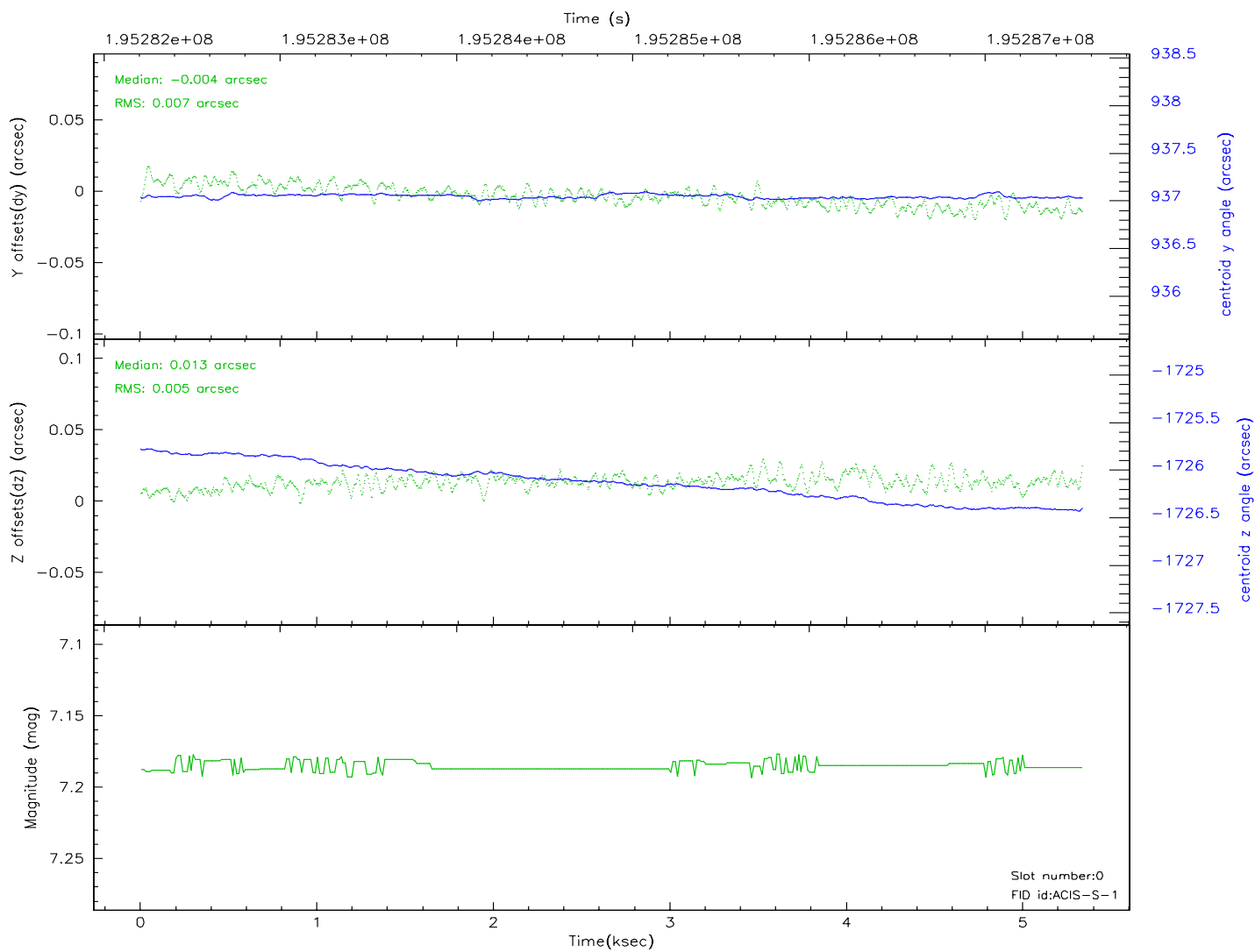
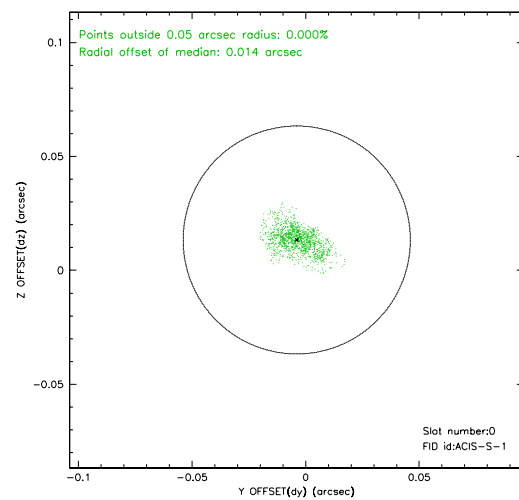
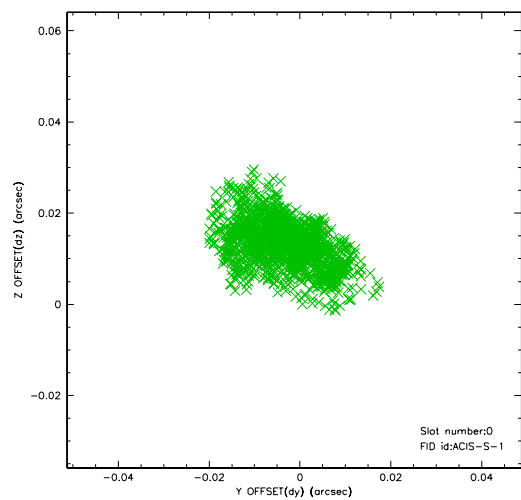


2.4.5 Slot 7

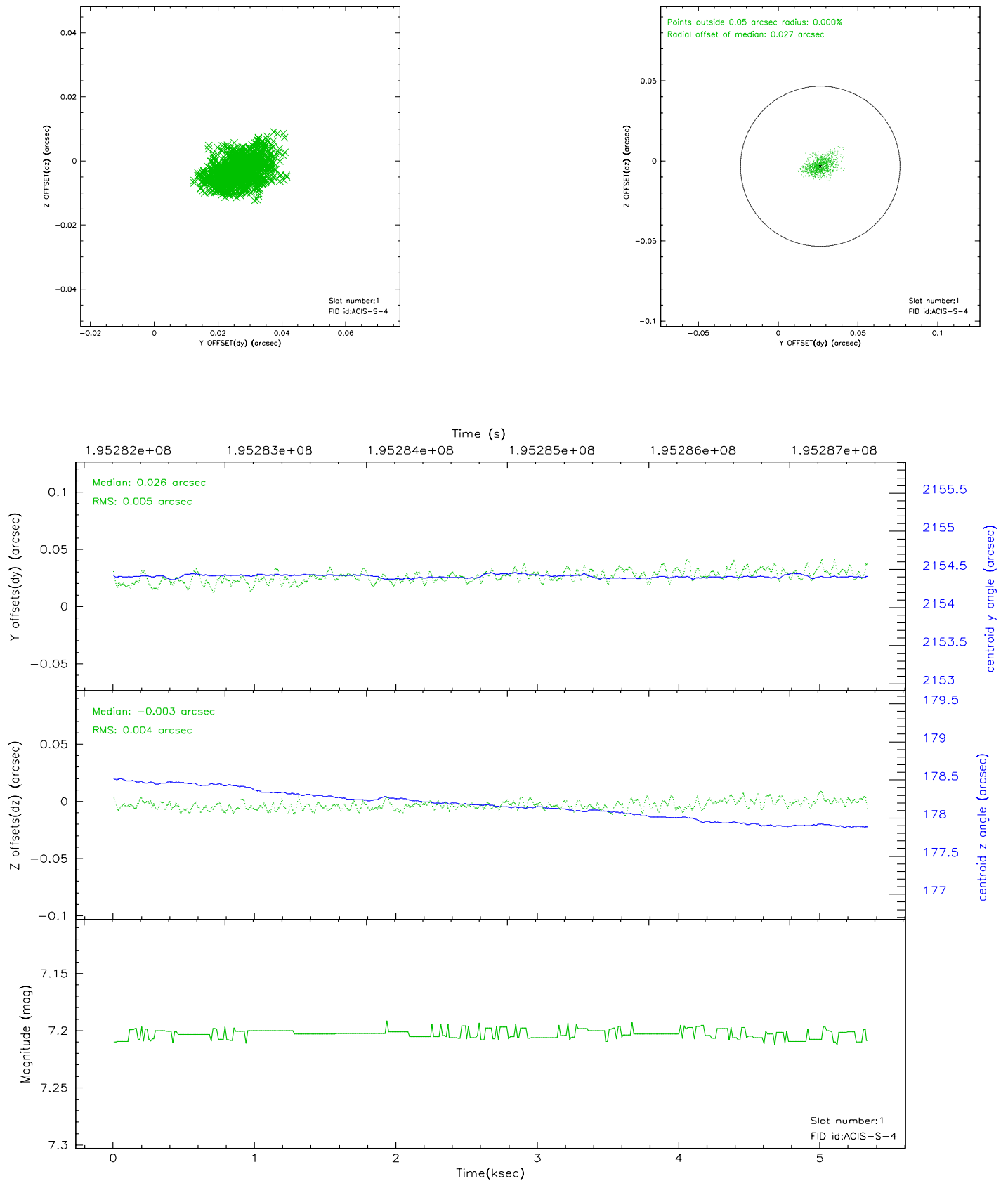


2.5 FID Slots

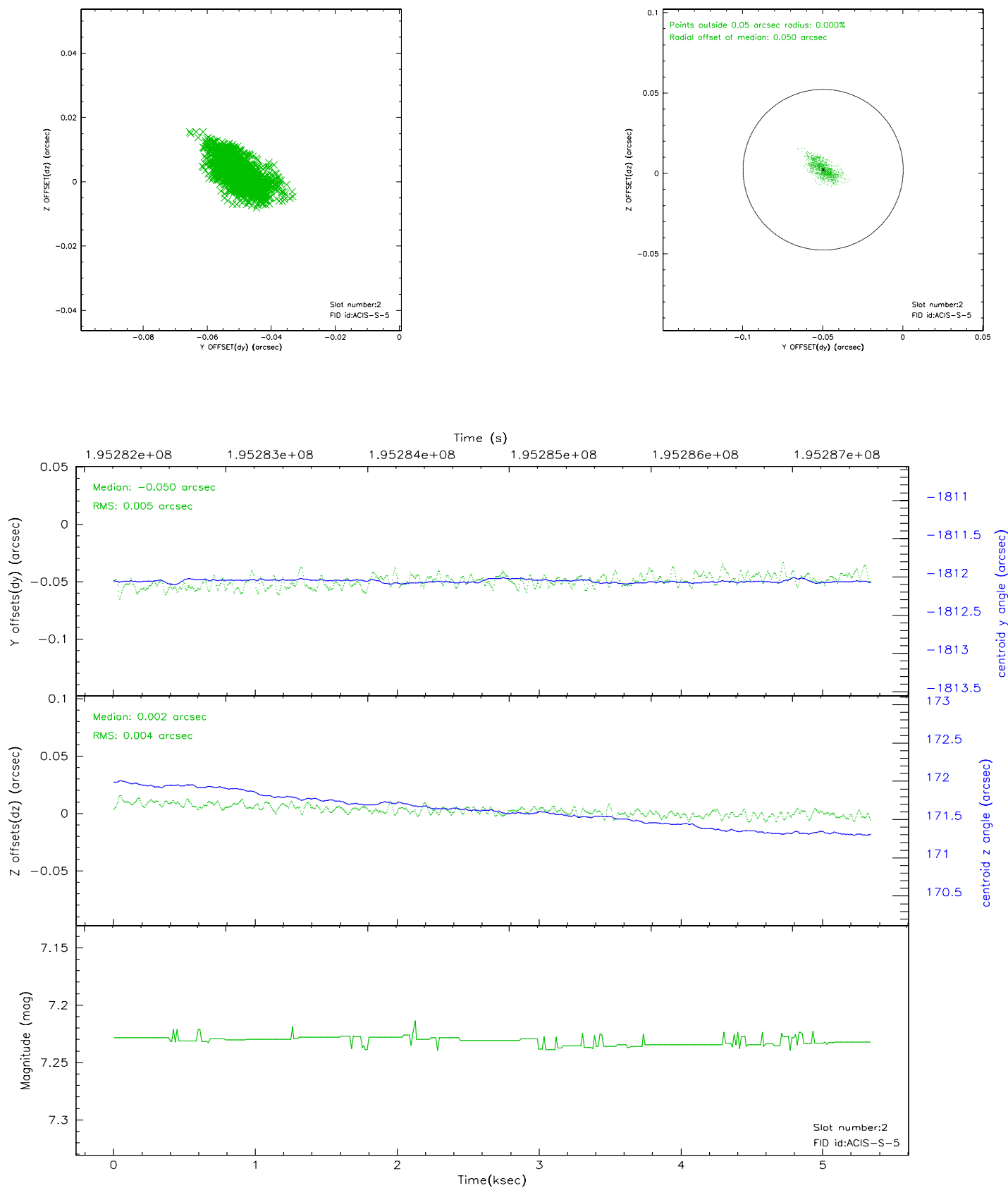
2.5.1 Slot 0



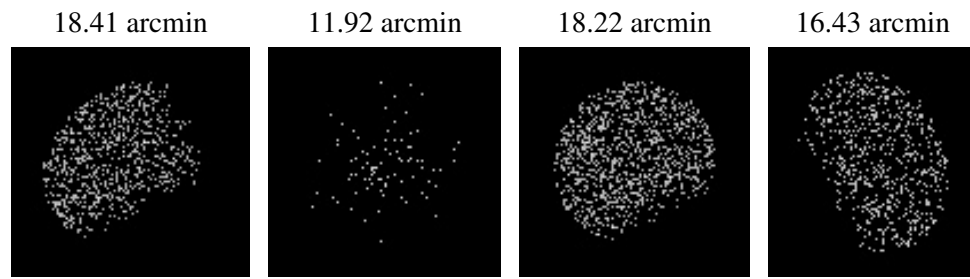
2.5.2 Slot 1



2.5.3 Slot 2



3 Point Sources



A Summary

A.1 Status

V&V Scientist	Beth Sundheim
V&V Date (YYYY-MM-DD)	2006.05.30
V&V Edition	1
V&V Disposition and Status	OK
V&V Charge Time	5.337

A.2 Comments