

V&V Reference Report

L2 ASCDS Version : 8.4.5

Observation 4747 - L2 Version 3
Chandra X-Ray Center

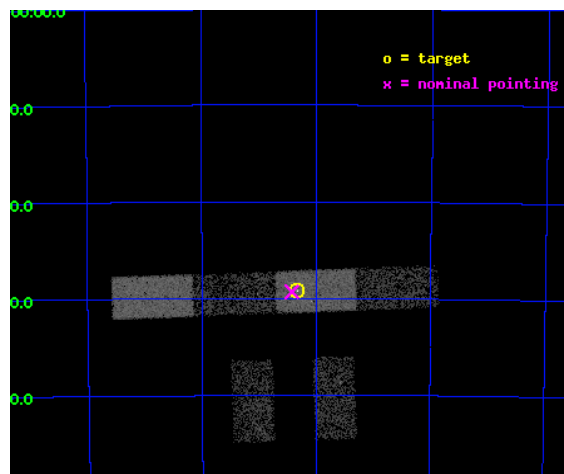
L2 Processing Date : Nov 8 2012

Contents

1	Front	2
2	OBI	3
2.1	OBI	3
2.1.1	Images	3
2.1.2	Bias	3
2.1.3	Parameters	4
2.1.4	Events	4
2.2	Compared Parameters	5
2.3	Aspect	6
2.4	Star Slots	9
2.4.1	Slot 3	9
2.4.2	Slot 4	10
2.4.3	Slot 5	11
2.4.4	Slot 6	12
2.4.5	Slot 7	13
2.5	FID Slots	14
2.5.1	Slot 0	14
2.5.2	Slot 1	15
2.5.3	Slot 2	16
A	Summary	17
A.1	Status	17
A.2	Comments	17

1 Front

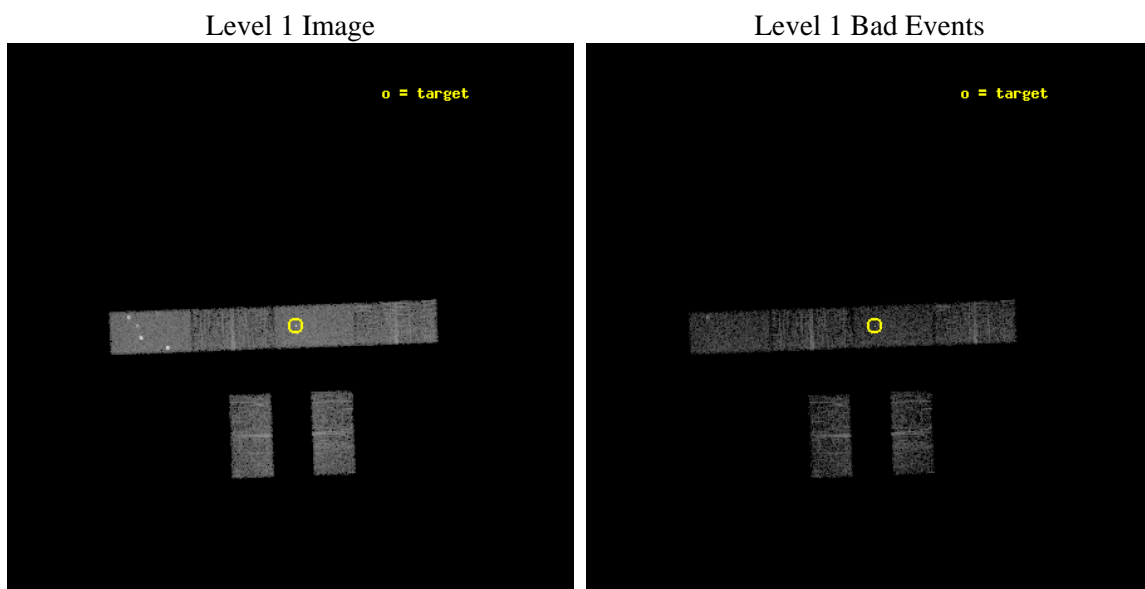
seq_num	600402	Sequence number
obs_id	4747	Observation id
title	Observations of Intermediate Mass Black Hole Candidate Ultra-Luminous X-ray Sources	Proposal title
observer	Dr Jon Miller	Principal investigator
object	NGC 1313 X-1 Obs 1	Source name
dtcycle	0	
cycle	P	events from which exps? Prim/Second/Both
ra_targ	49.583333	Observer's specified target RA [deg]
dec_targ	-66.486389	Observer's specified target Dec [deg]
ra_nom	49.607336860012	Nominal RA [deg]
dec_nom	-66.488423497904	Nominal Dec [deg]
roll_nom	357.86339374497	Nominal Roll [deg]
revision	3	Processing version of data
ontime	5405.1990986764	Sum of GTIs [s]
livetime	5284.7077617095	Livetime [s]
ontime2	5405.2401386797	Sum of GTIs [s]
ontime3	5405.0759786665	Sum of GTIs [s]
ontime5	5405.1580586731	Sum of GTIs [s]
ontime6	5405.1170186698	Sum of GTIs [s]
ontime7	5405.1990986764	Sum of GTIs [s]
ontime8	5405.034938693	Sum of GTIs [s]
l2events	30094	Number of level 2 events



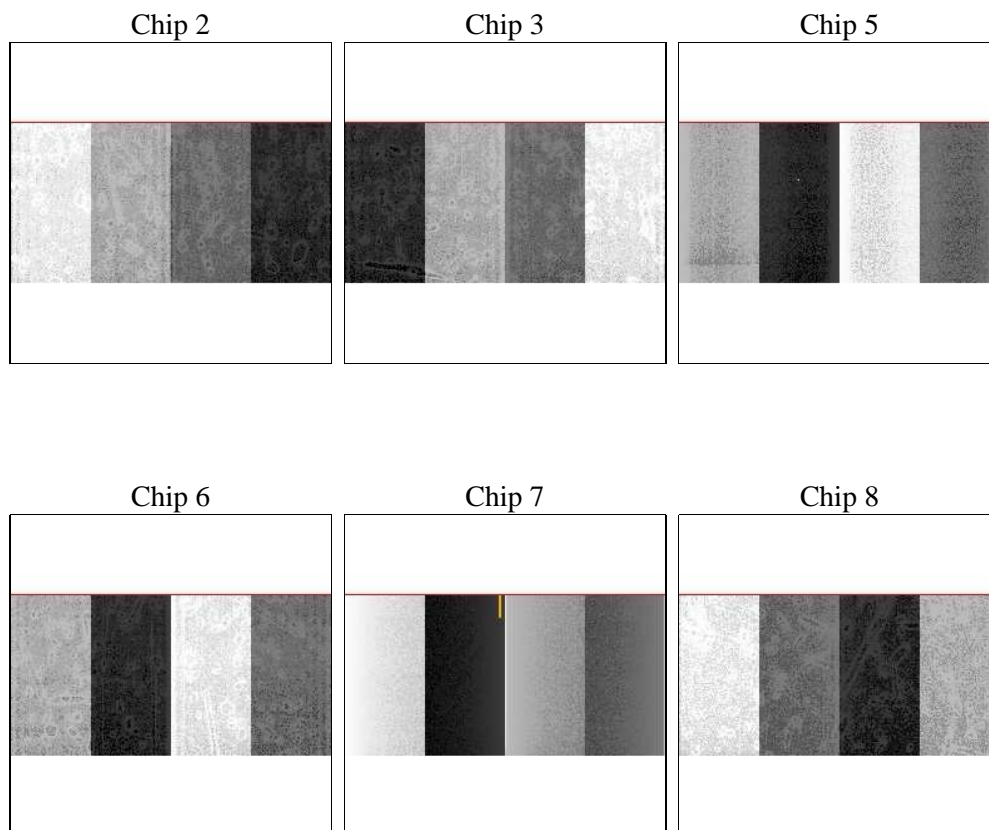
2 OBI

2.1 OBI

2.1.1 Images



2.1.2 Bias



2.1.3 Parameters

obi_num	0	Obi number	sched_exp_time	5000.000000	[s] Scheduled observation exposure time
ascdsver	8.4.5	Processing system revision	ontime	5405.1990986764	Sum of GTIs [s]
caldsver	4.5.2	 	ontime2	5405.2401386797	Sum of GTIs [s]
date	2012-11-08T02:09:48	Date and time of file creation	ontime3	5405.0759786665	Sum of GTIs [s]
revision	3	Processing version of data	ontime5	5405.1580586731	Sum of GTIs [s]
			ontime6	5405.1170186698	Sum of GTIs [s]
			ontime7	5405.1990986764	Sum of GTIs [s]
			ontime8	5405.034938693	Sum of GTIs [s]
			l1events	117384	Number of level 1 events

2.1.4 Events

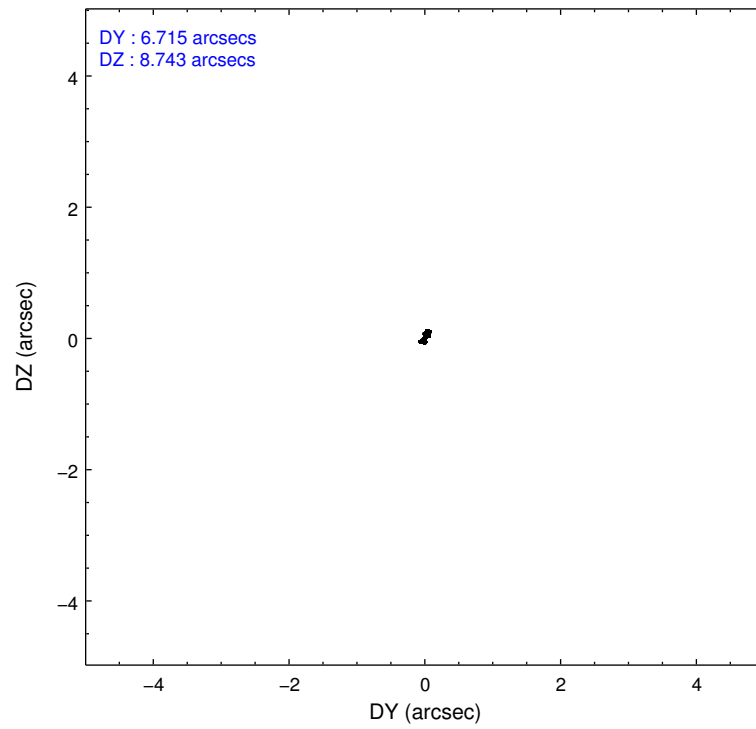
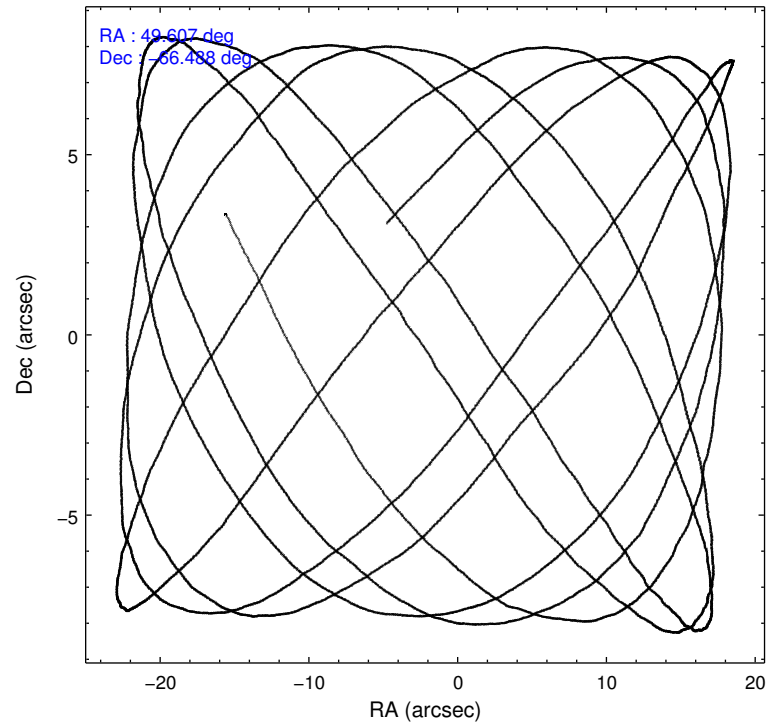
	ccd 2	ccd 3	ccd 5	ccd 6	ccd 7	ccd 8
level 1 events	14778	14505	28812	15653	23995	19641
rejected events	12674	12469	11716	13502	11633	14624
rejected %	85%	85%	40%	86%	48%	74%

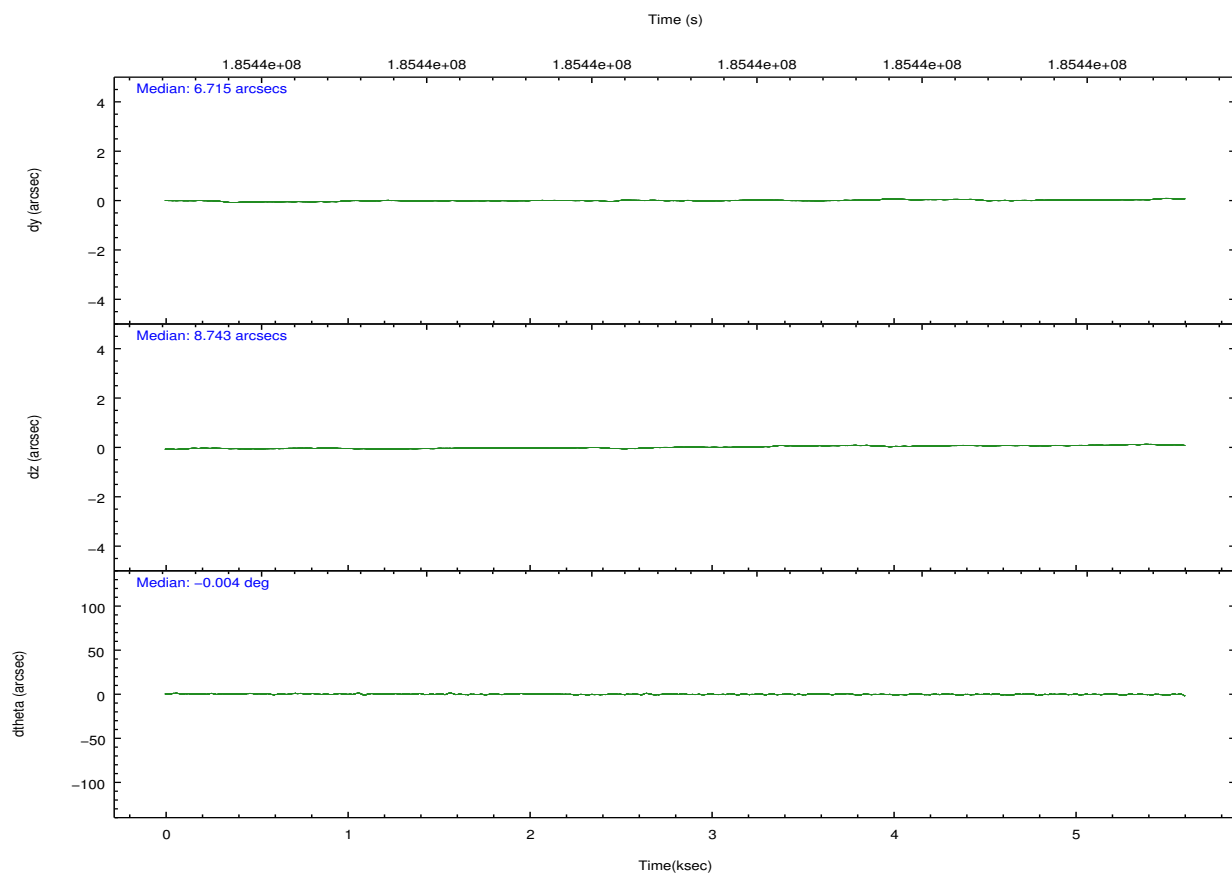
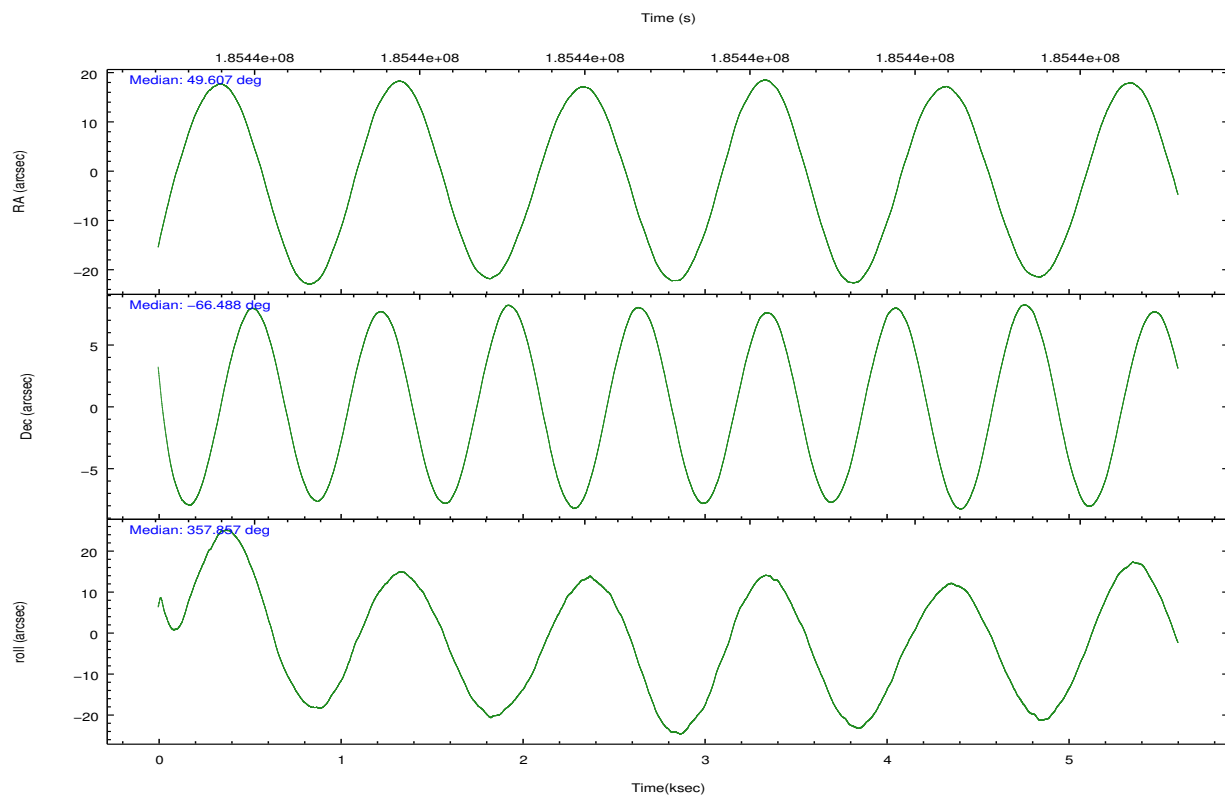
	ccd 2	ccd 3	ccd 5	ccd 6	ccd 7	ccd 8
grade 0 events	928	884	6740	893	1565	1644
	6%	6%	23%	5%	6%	8%
grade 1 events	6	9	33	8	40	5
	0%	0%	0%	0%	0%	0%
grade 2 events	429	398	3656	458	2580	1000
	2%	2%	12%	2%	10%	5%
grade 3 events	194	200	590	217	1139	592
	1%	1%	2%	1%	4%	3%
grade 4 events	219	204	563	212	1184	562
	1%	1%	1%	1%	4%	2%
grade 5 events	540	659	1727	661	2045	827
	3%	4%	5%	4%	8%	4%
grade 6 events	335	350	5555	371	5897	1221
	2%	2%	19%	2%	24%	6%
grade 7 events	12127	11801	9948	12833	9545	13790
	82%	81%	34%	81%	39%	70%

2.2 Compared Parameters

Parameter	Planned	Actual	Parameter	Planned	Actual
Instrument	ACIS	ACIS	Obspar format version number	7	7
Detector	ACIS-235678	ACIS-235678	Obspar file type	PREDICTED	ACTUAL
Grating	NONE	NONE	Obspar update status	NONE	UPDATED
Data mode	FAINT	FAINT	Number of optional ACIS chips dropped	0	0
Observation mode	POINTING	POINTING	On-chip summing requested	N	N
[deg] Pointing RA	49.547079	49.607336860012	Subarray requested	CUSTOM	1/2
[deg] Pointing Dec	-66.501488	-66.48842349790367	Subarray start row	257	257
[deg] Pointing Roll	357.651468	357.8633937449715	Subarray row count	512	512
[mm] SIM focus pos	-0.684267	-0.6828225247311905	Alternating exposures requested	N	N
[mm] SIM defocus	0	0.001444936568705701	[s] Primary exposure time	0.000000	1.8
[mm] SIM translation stage pos	-190.132523	-190.1425803651734			
[mm] SIM translation stage offset	0	0.01005778216563158			
[s] Observation start time (MET)	185437302.184000	185436131.79265			
Observation start date	2003-11-17T06:20:38	2003-11-17T06:02:11			
[s] Observation end time (MET)	185442302.184000	185442727.66794			
Observation end date	2003-11-17T07:43:58	2003-11-17T07:52:07			
Read mode	TIMED	TIMED			

2.3 Aspect



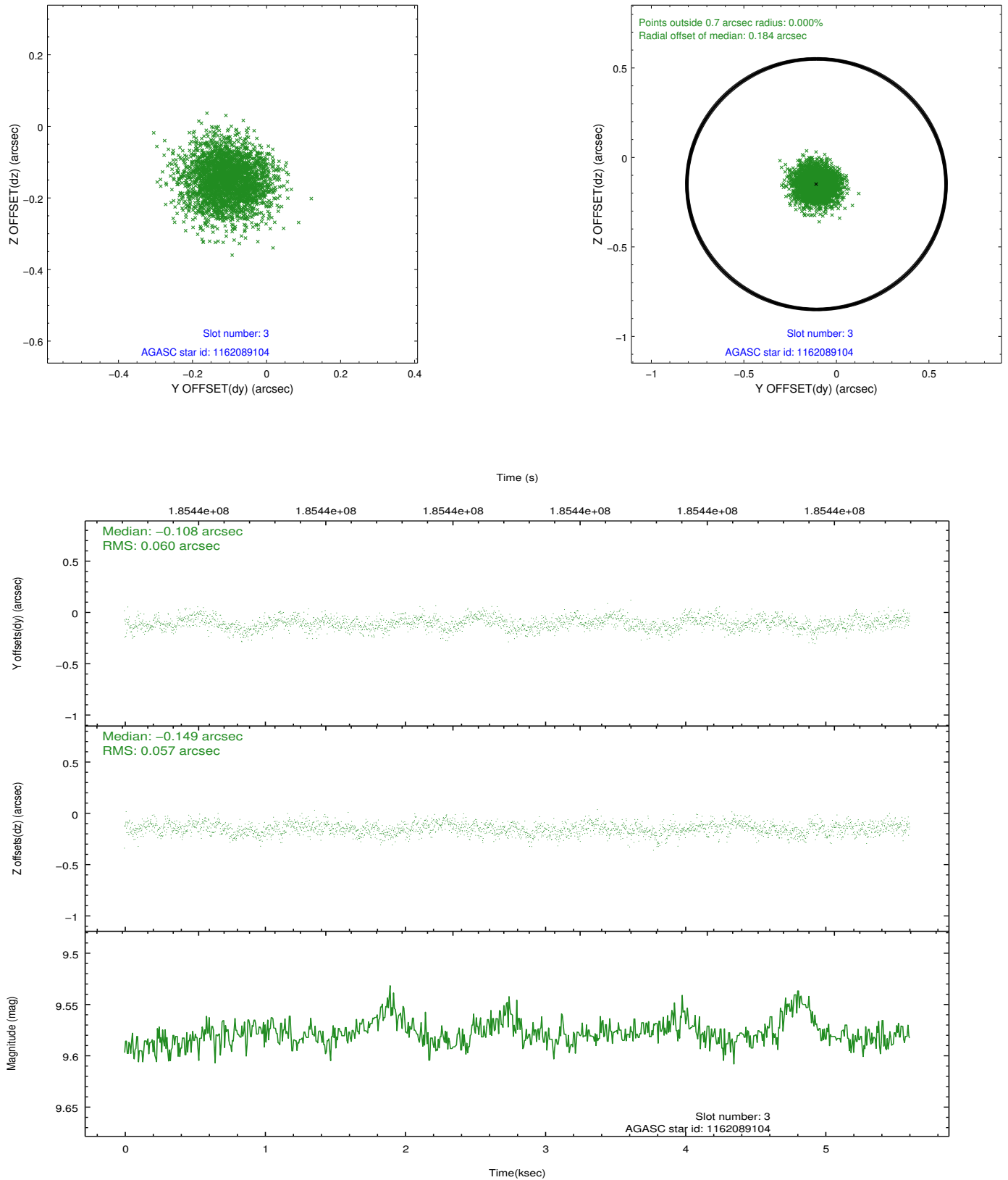


Slot Statistics

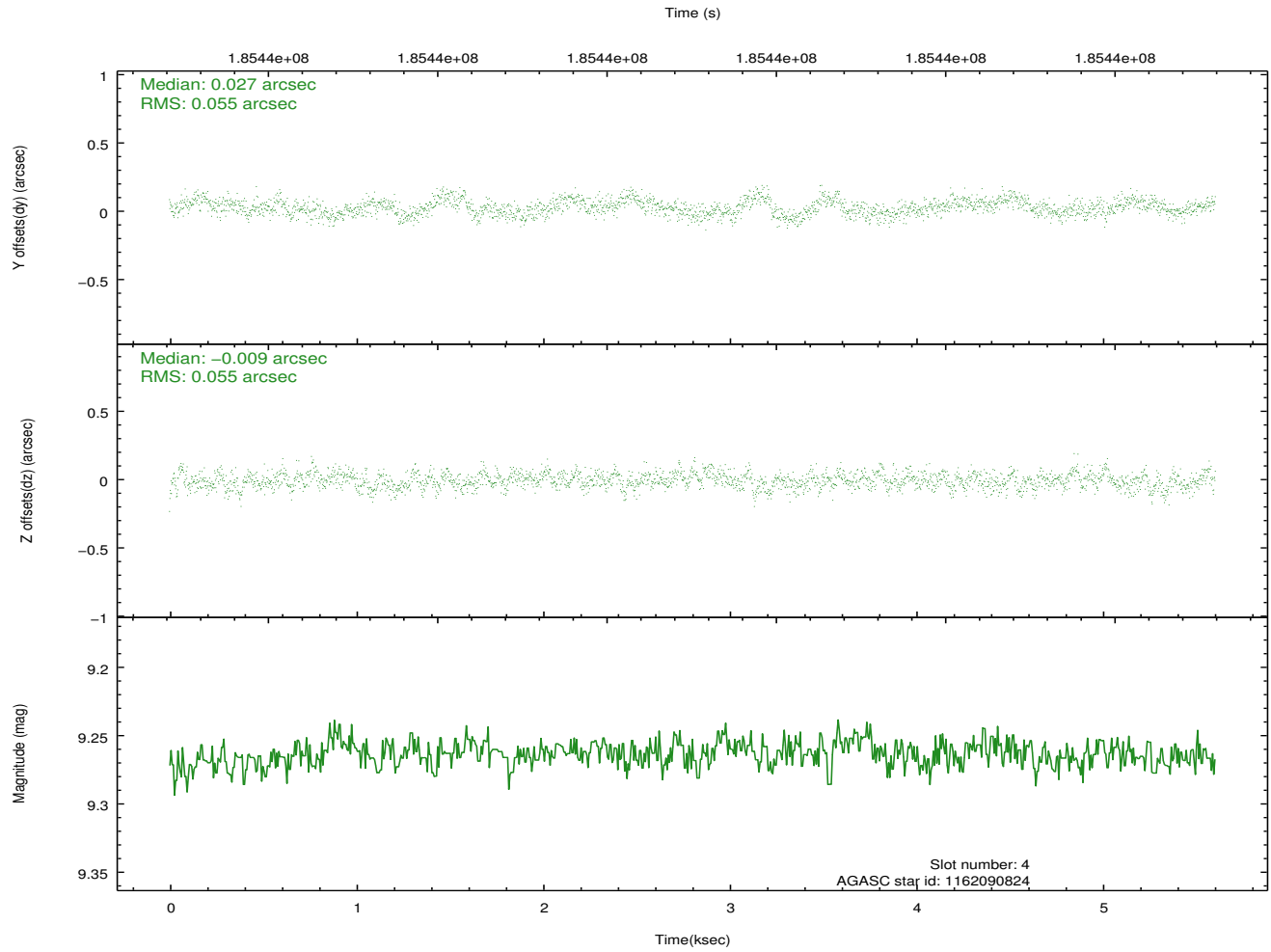
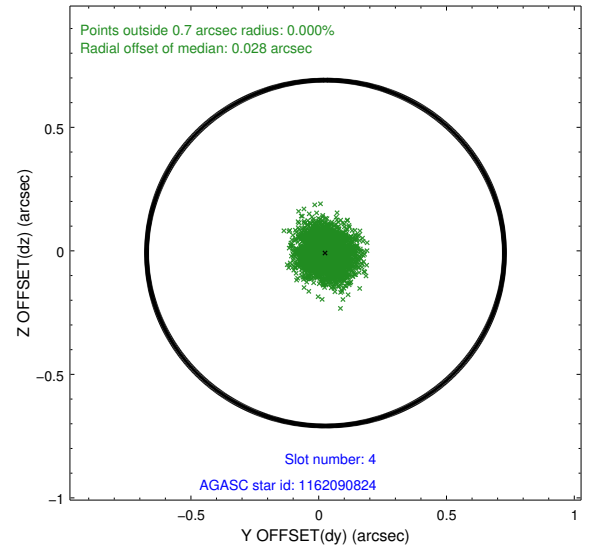
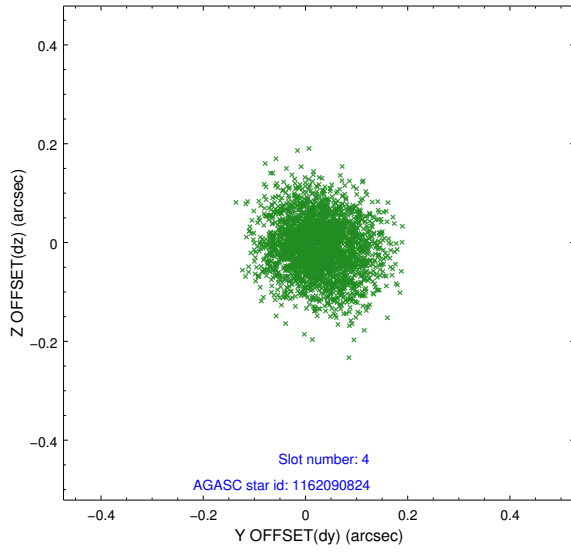
slot	status	id	mag	n_pts	med_dy	med_dz	dr1	dr2	ra	dec	mean_y	mean_z
0	FID	ACIS-S-2	7.10	1368	-0.057	-0.031	0.005	0.010	0.000000	0.000000	-759.52	-1729.95
1	FID	ACIS-S-4	7.20	1367	0.054	0.031	0.006	0.010	0.000000	0.000000	2153.38	177.49
2	FID	ACIS-S-6	7.35	1366	-0.025	0.007	0.007	0.012	0.000000	0.000000	403.87	816.08
3	GUIDE	1162089104	9.58	2735	-0.108	-0.149	0.087	0.142	48.422126	-66.410699	-1632.29	245.39
4	GUIDE	1162090824	9.26	2733	0.027	-0.009	0.084	0.133	48.677982	-66.885202	-1170.82	-1439.01
5	GUIDE	1162094224	9.70	2733	0.040	0.033	0.097	0.157	49.638584	-66.701903	159.30	-715.96
6	GUIDE	1162095544	10.18	2734	-0.150	0.087	0.147	0.230	48.846024	-66.171463	-1067.56	1139.52
7	GUIDE	1162085688	10.27	2734	0.190	0.038	0.125	0.203	49.879892	-65.844121	392.34	2383.99

2.4 Star Slots

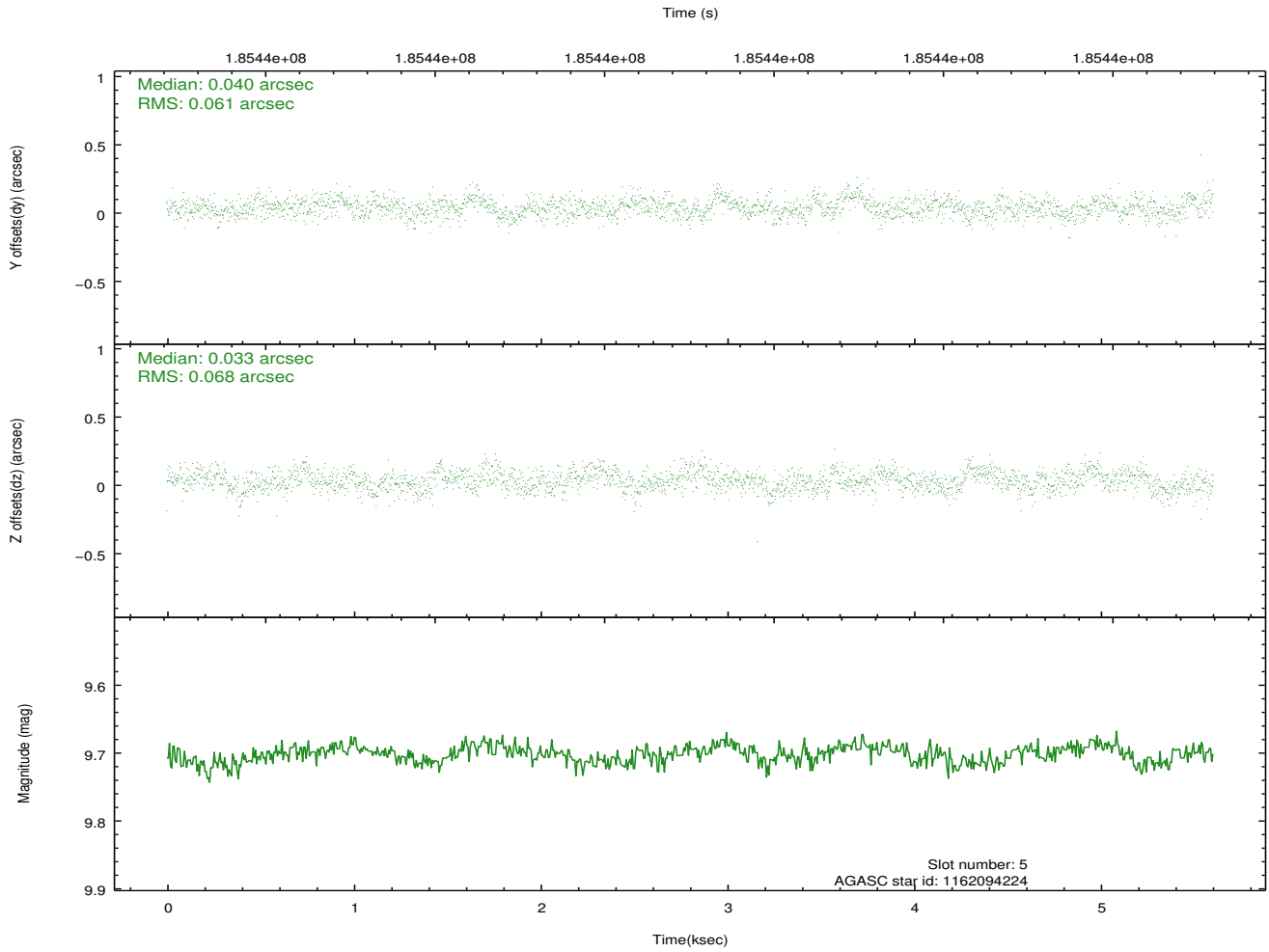
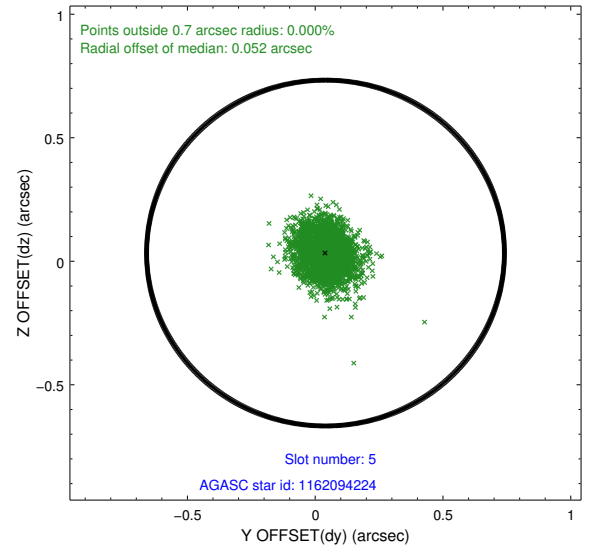
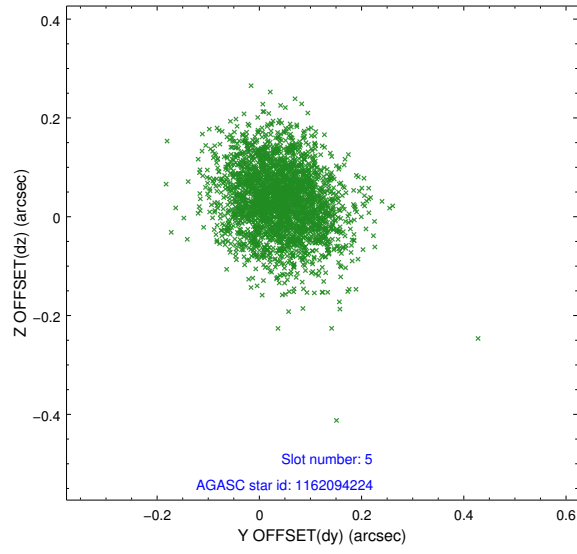
2.4.1 Slot 3



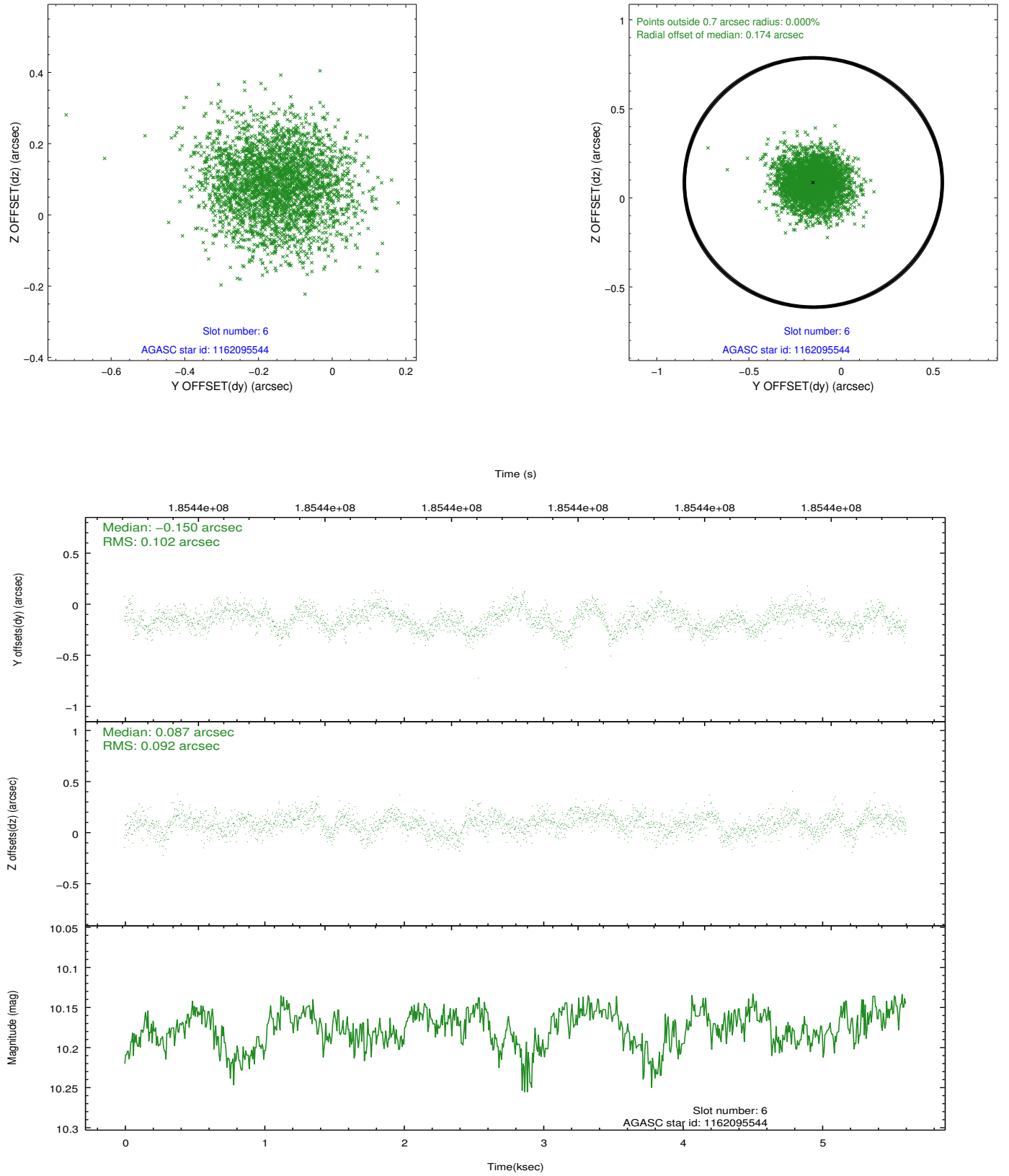
2.4.2 Slot 4



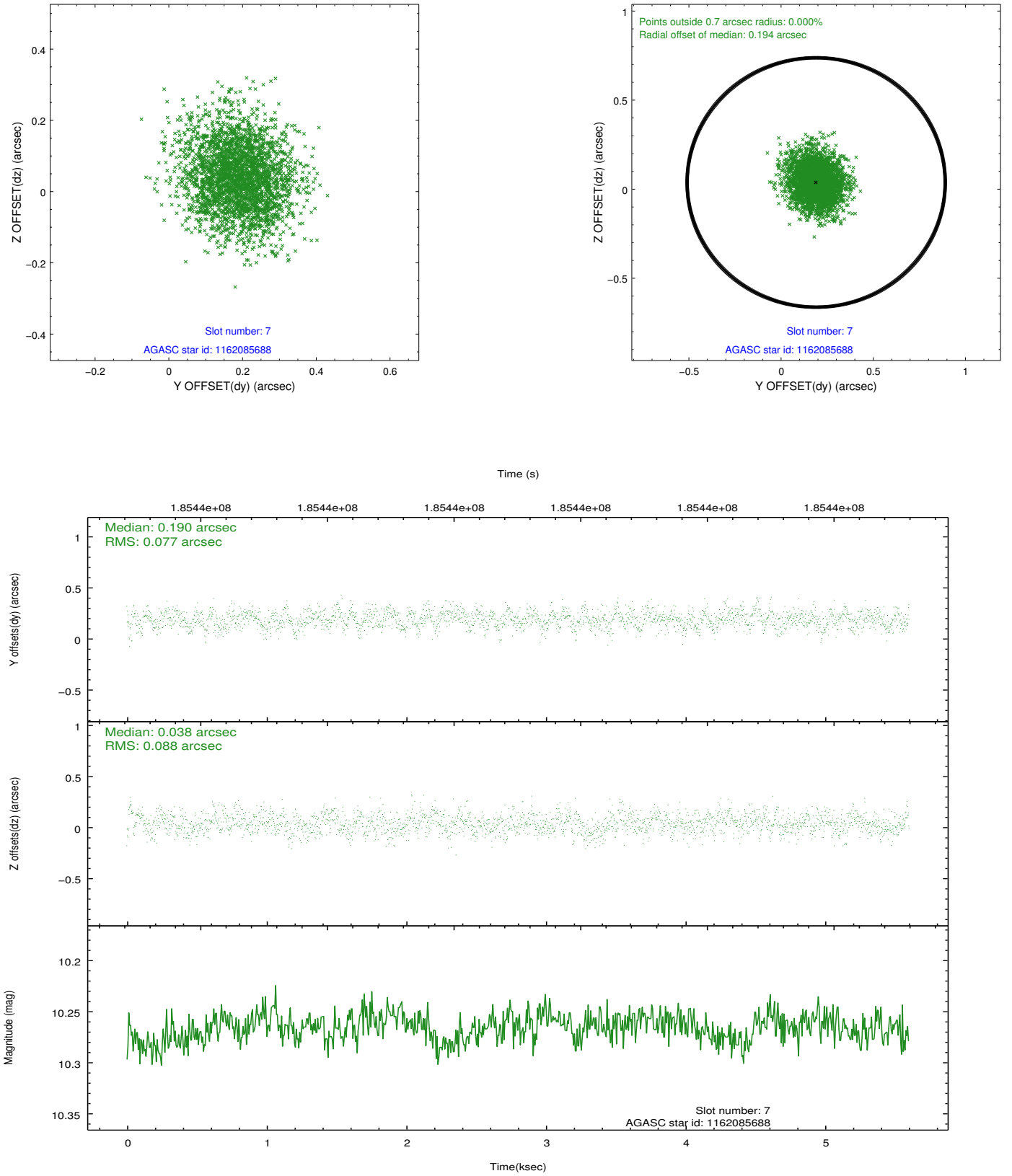
2.4.3 Slot 5



2.4.4 Slot 6

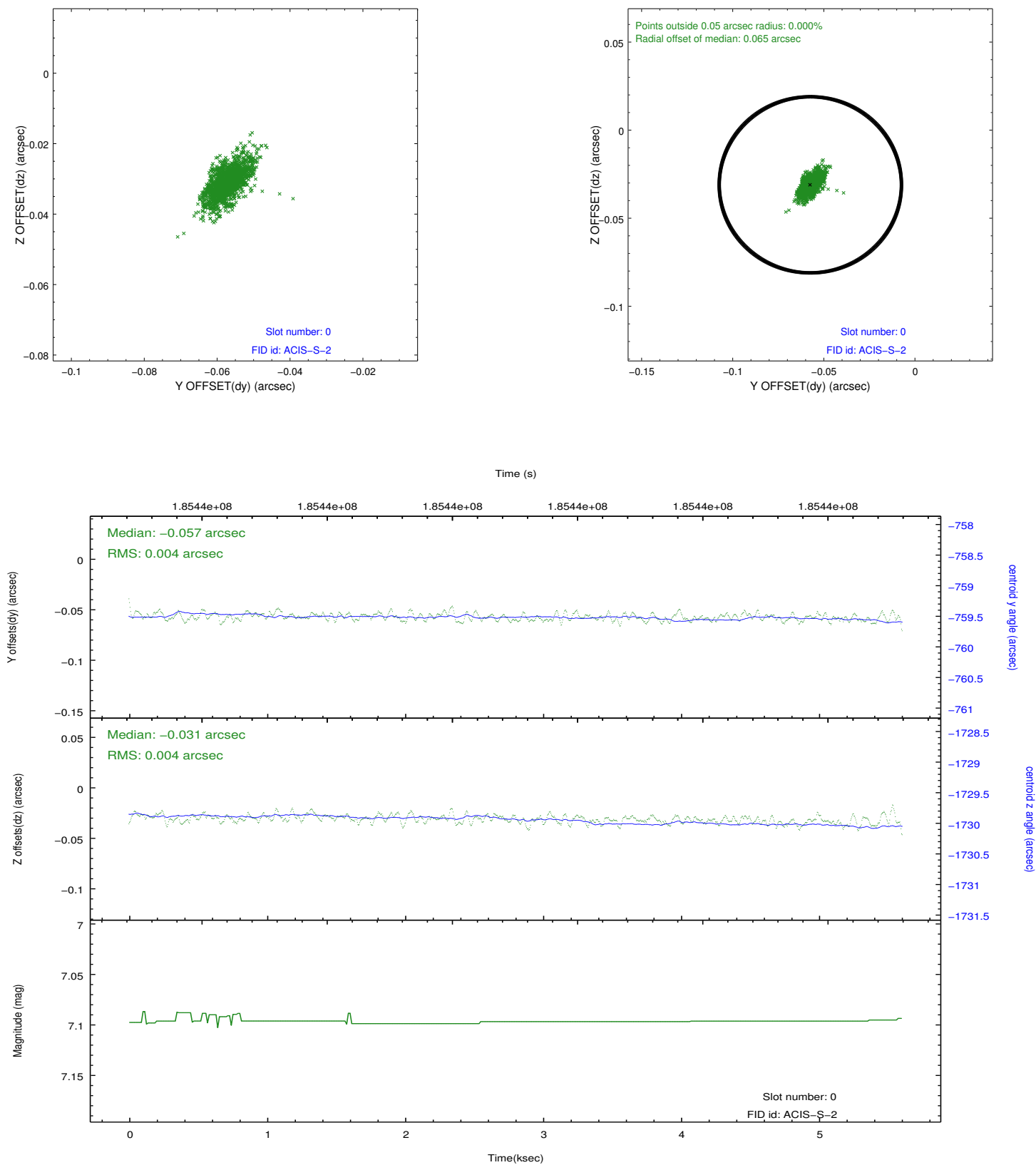


2.4.5 Slot 7

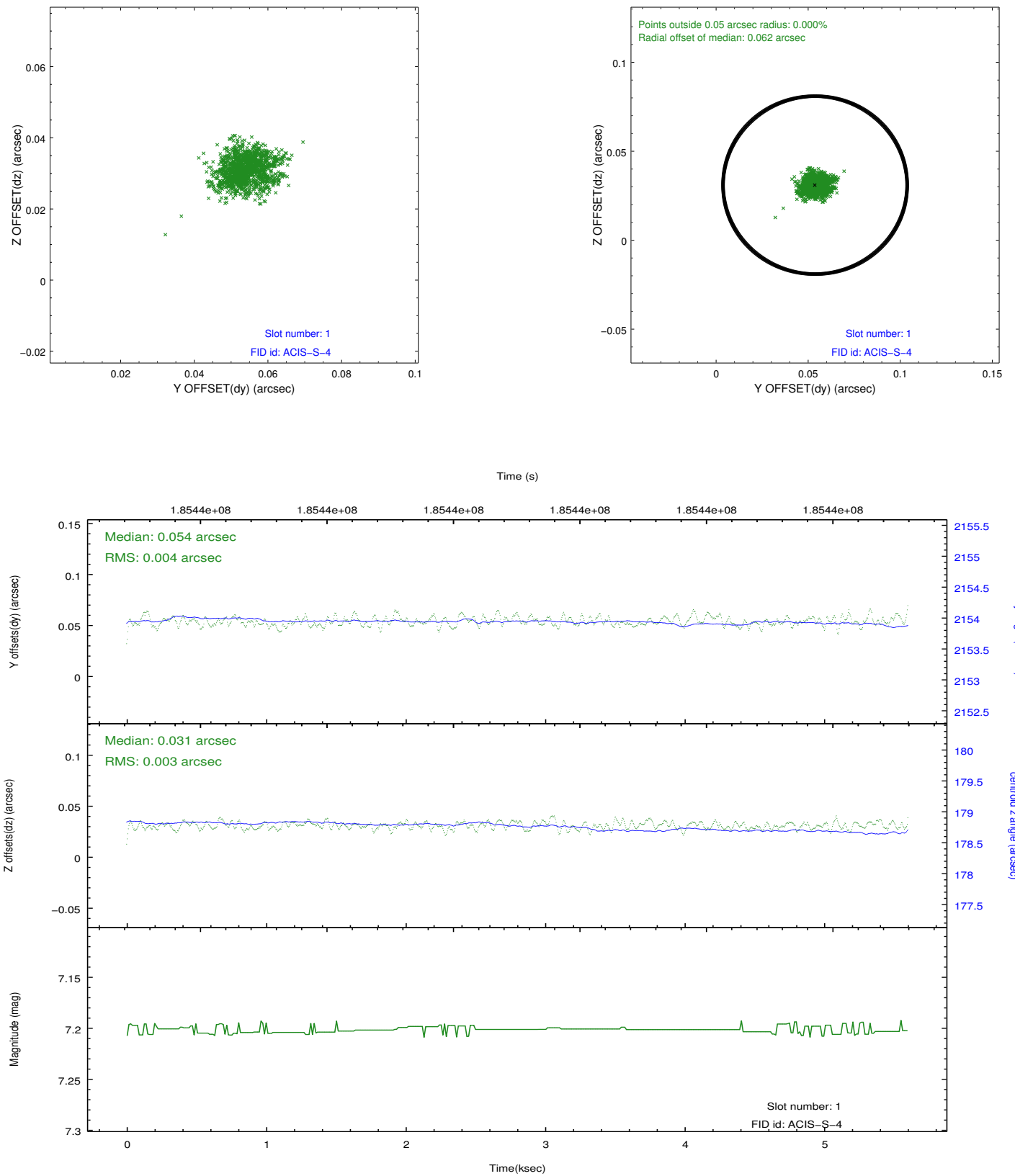


2.5 FID Slots

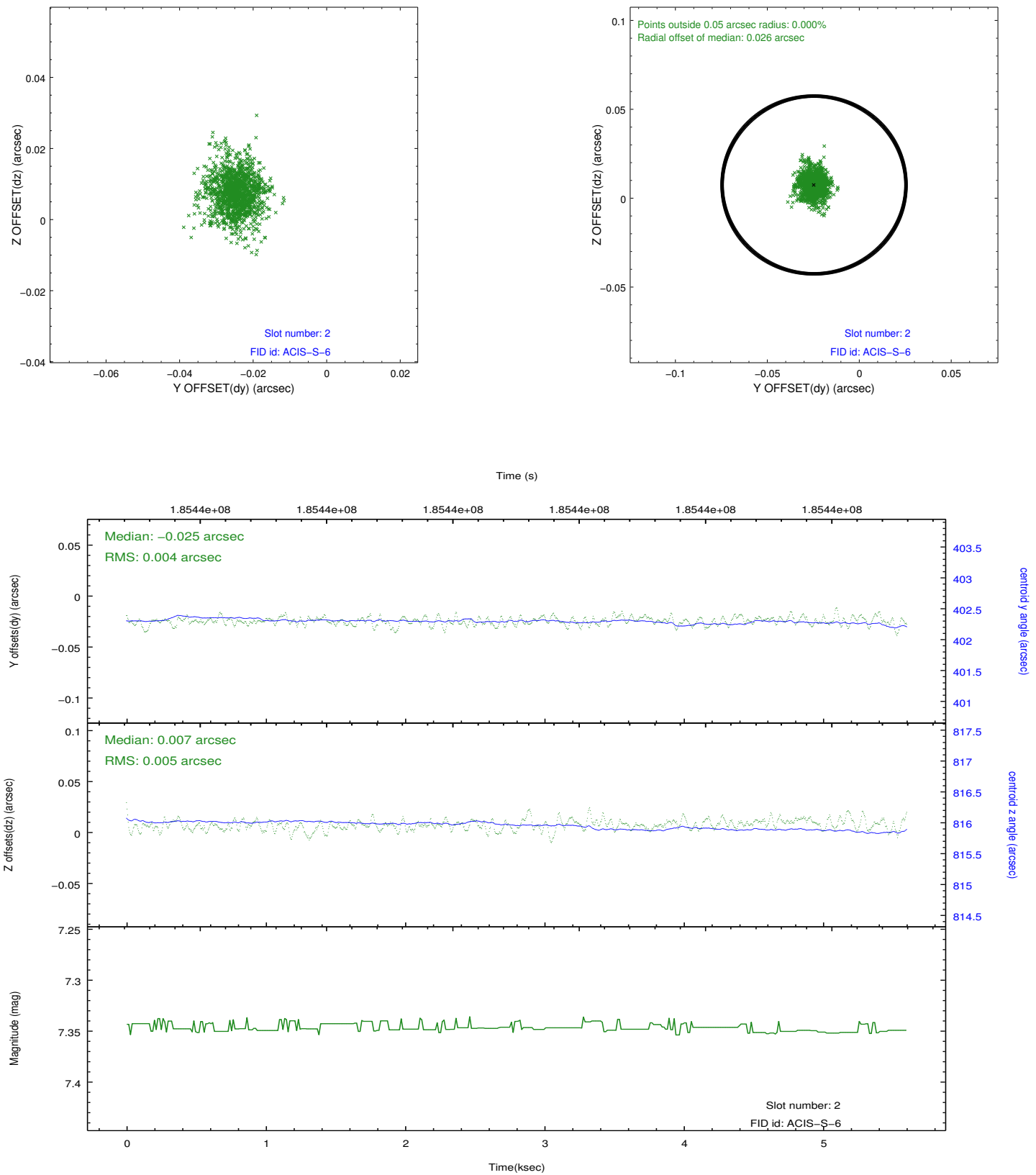
2.5.1 Slot 0



2.5.2 Slot 1



2.5.3 Slot 2



A Summary

A.1 Status

V&V Scientist	Beth Sundheim
V&V Date (YYYY-MM-DD)	2012.11.29
V&V Edition	1
V&V Disposition and Status	OK
V&V Charge Time	5.405

A.2 Comments

Joint proposal with HST.