

# V&V Reference Report

## L2 ASCDS Version : 7.6.7.1

Observation 4737 - L2 Version 002  
Chandra X-Ray Center

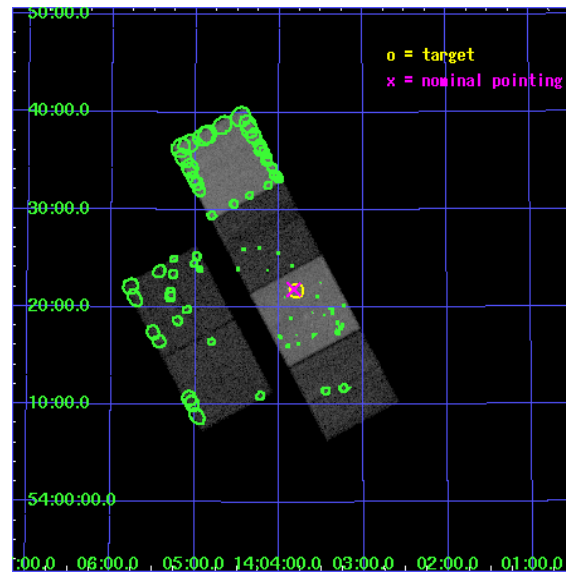
L2 Processing Date : Mar 16 2006

## Contents

<b>1</b>	<b>Front</b>	<b>2</b>
<b>2</b>	<b>OBI</b>	<b>3</b>
2.1	OBI . . . . .	3
2.1.1	Images . . . . .	3
2.1.2	Bias . . . . .	3
2.1.3	Parameters . . . . .	4
2.1.4	Events . . . . .	4
2.2	Compared Parameters . . . . .	5
2.3	Aspect . . . . .	6
2.4	Star Slots . . . . .	9
2.4.1	Slot 3 . . . . .	9
2.4.2	Slot 4 . . . . .	10
2.4.3	Slot 5 . . . . .	11
2.4.4	Slot 6 . . . . .	12
2.4.5	Slot 7 . . . . .	13
2.5	FID Slots . . . . .	14
2.5.1	Slot 0 . . . . .	14
2.5.2	Slot 1 . . . . .	15
2.5.3	Slot 2 . . . . .	16
<b>3</b>	<b>Point Sources</b>	<b>17</b>
<b>A</b>	<b>Summary</b>	<b>18</b>
A.1	Status . . . . .	18
A.2	Comments . . . . .	18

# 1 Front

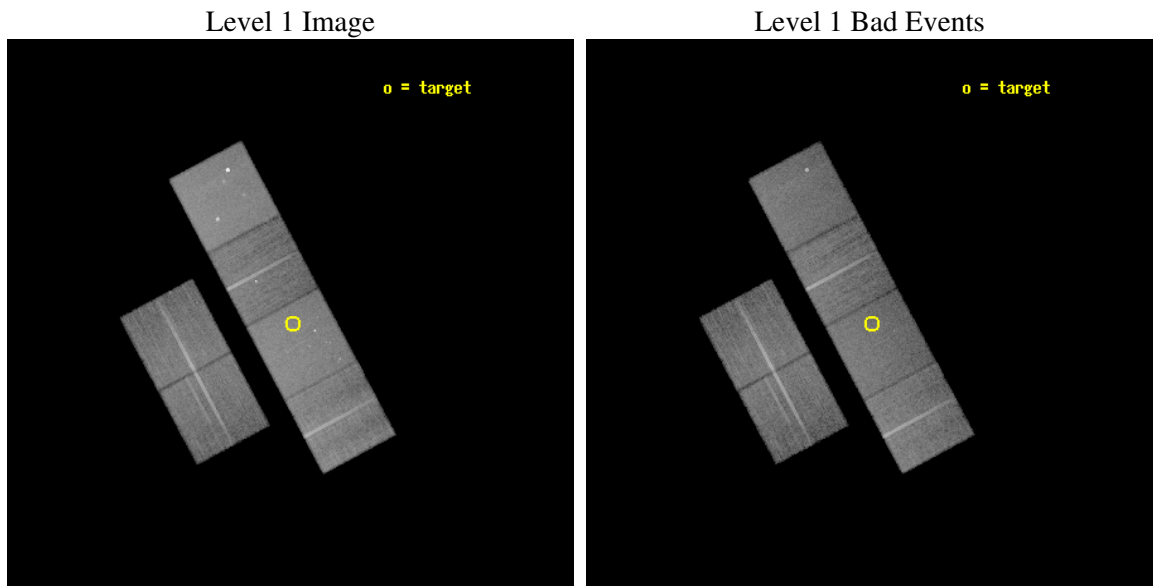
seq_num	600392
obs_id	4737
title	An Ultra-Deep Study of M101
observer	Dr. K. Kuntz
object	M101
dtcycle	0
cycle	P
ra_targ	210.950833
dec_targ	54.361389
ra_nom	210.9565994181
dec_nom	54.36415445357
roll_nom	61.926115182454
revision	2
ontime	22134.399917543
livetime	21854.120818051
ontime2	22131.158947259
ontime3	22131.158947259
ontime5	22134.399917543
ontime6	22124.676907063
ontime7	22134.399917543
ontime8	22131.159066796
l2events	269924



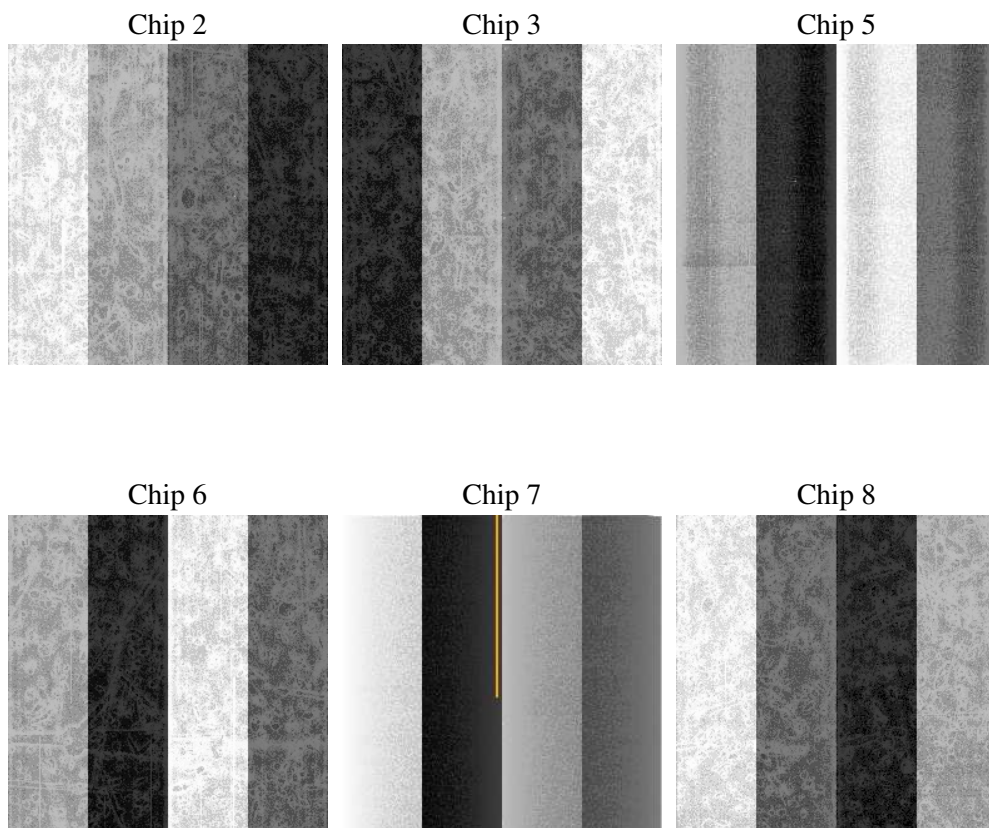
## 2 OBI

### 2.1 OBI

#### 2.1.1 Images



#### 2.1.2 Bias



### 2.1.3 Parameters

obi_num	0
ascdsver	7.6.7.1
caldsver	3.2.1
date	2006-03-16T10:01:21
revision	2

sched_exp_time	22000.000000
ontime	22139.299558014
ontime2	22136.05858773
ontime3	22136.058567792
ontime5	22139.299558014
ontime6	22129.576547533
ontime7	22139.299558014
ontime8	22136.058687329
l1events	1204601

### 2.1.4 Events

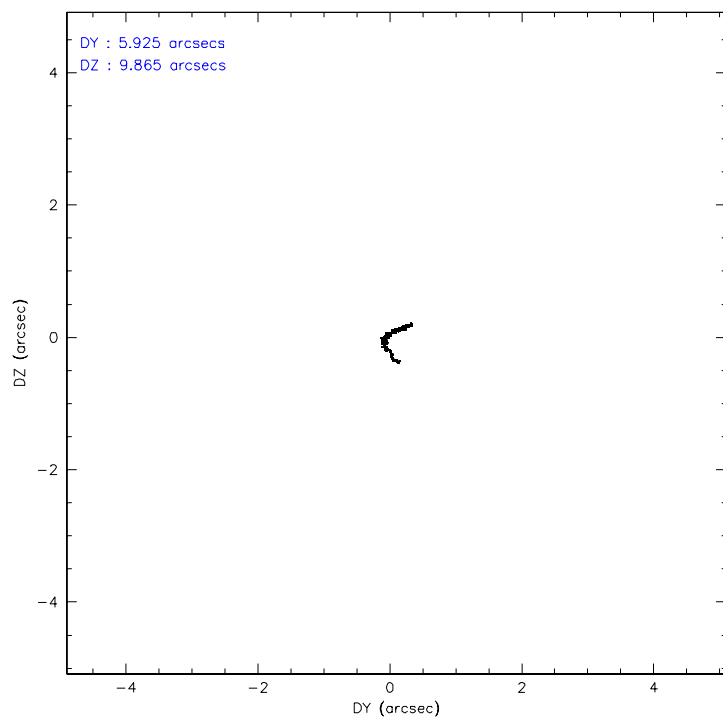
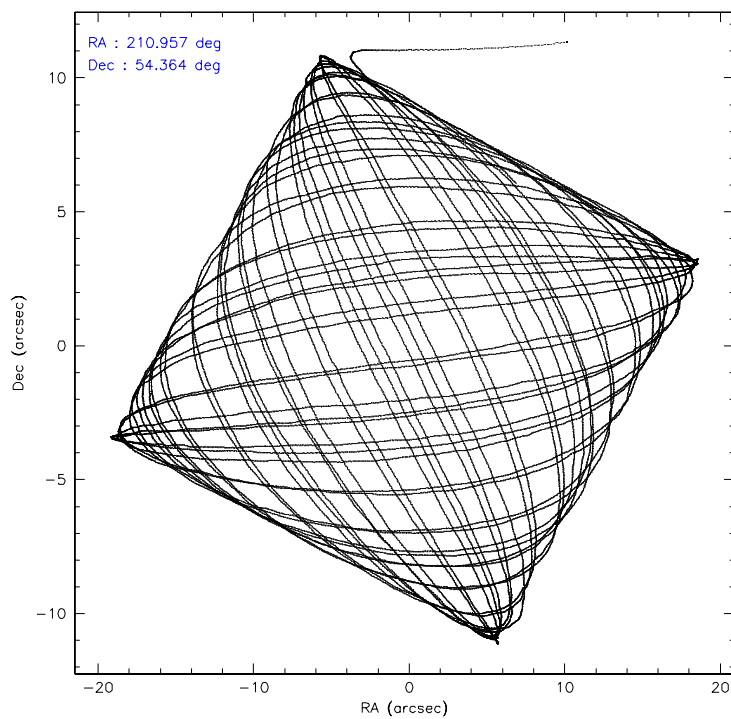
	ccd 2	ccd 3	ccd 5	ccd 6	ccd 7	ccd 8
level 1 events	171687	162309	255481	170766	230937	213421
rejected events	151270	142602	139352	149331	138893	166228
rejected %	88%	87%	54%	87%	60%	77%

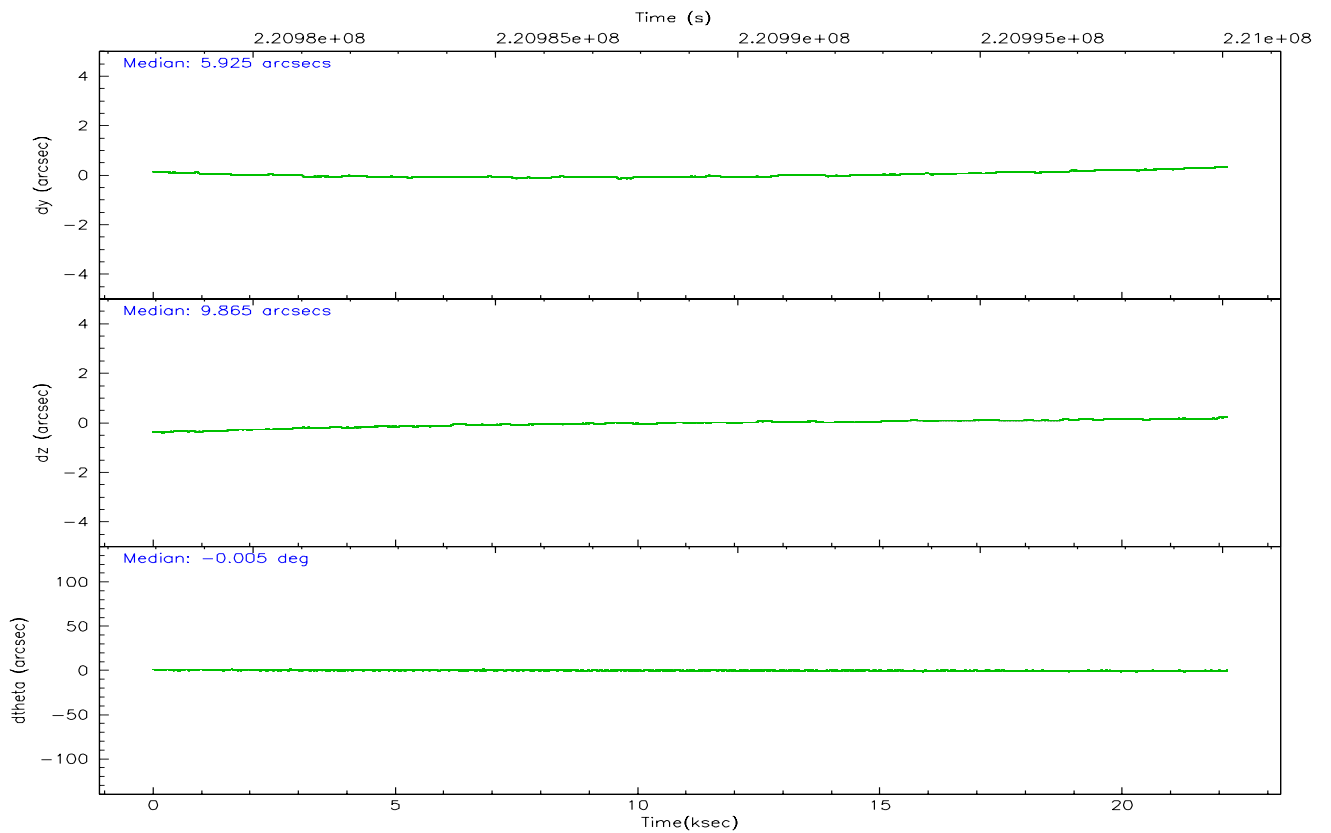
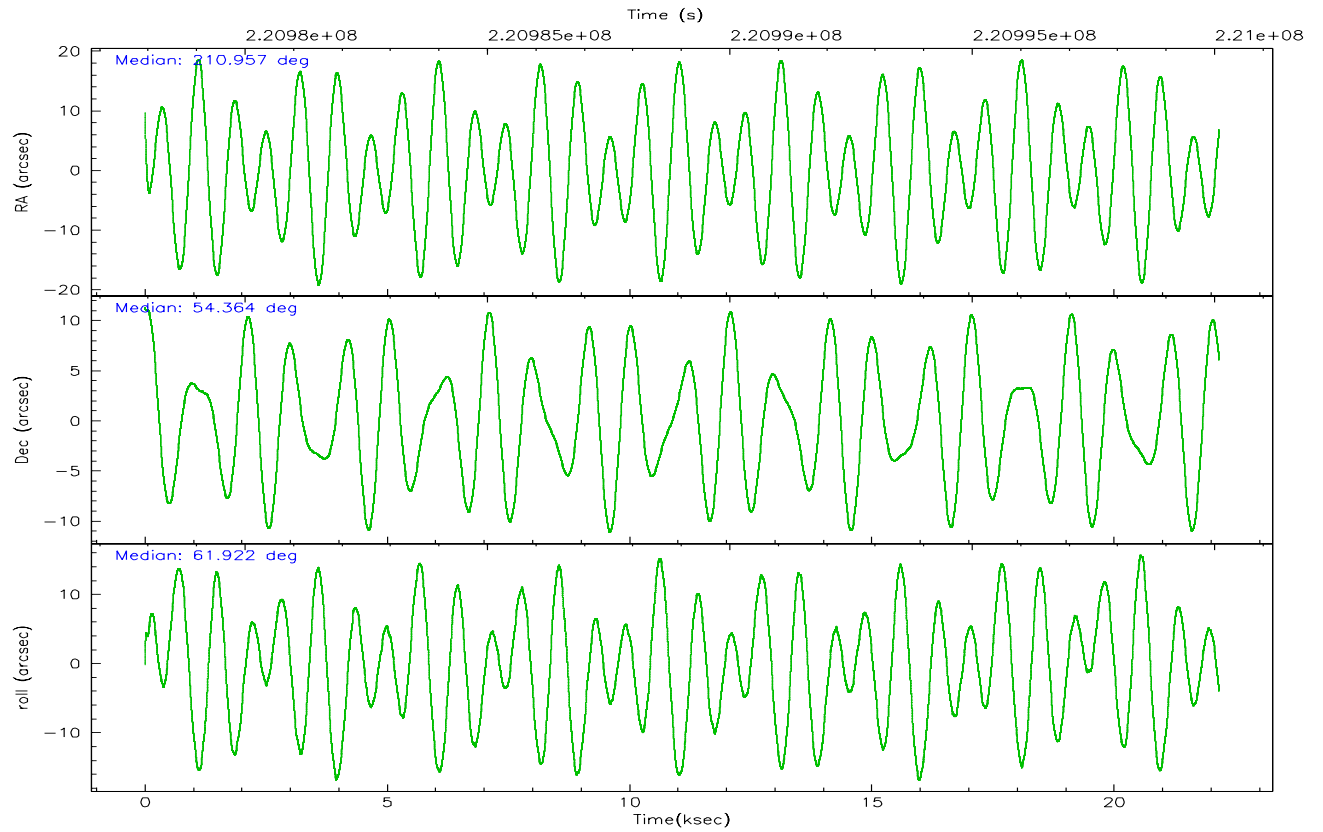
	ccd 2	ccd 3	ccd 5	ccd 6	ccd 7	ccd 8
grade 0 events	9334	8630	8000	9311	6771	15165
	5%	5%	3%	5%	2%	7%
grade 1 events	94	107	1422	113	168	112
	0%	0%	0%	0%	0%	0%
grade 2 events	4165	3776	39596	4211	22811	10226
	2%	2%	15%	2%	9%	4%
grade 3 events	1860	1921	2423	1874	4741	5168
	1%	1%	0%	1%	2%	2%
grade 4 events	1840	1931	2366	2009	4680	4812
	1%	1%	0%	1%	2%	2%
grade 5 events	6688	7365	12237	7699	14975	9940
	3%	4%	4%	4%	6%	4%
grade 6 events	3225	3451	63772	4036	53062	11829
	1%	2%	24%	2%	22%	5%
grade 7 events	144481	135128	125665	141513	123729	156169
	84%	83%	49%	82%	53%	73%

## 2.2 Compared Parameters

Parameter	Planned	Actual	Parameter	Planned	Actual
Instrument	ACIS	ACIS	Obspar format version number	6	6
Detector	ACIS-235678	ACIS-235678	Obspar file type	PREDICTED	ACTUAL
Grating	NONE	NONE	Obspar update status	NONE	UPDATED
Data mode	VFAINT	VFAINT	On-chip summing requested	N	N
Observation mode	POINTING	POINTING	Subarray requested	NONE	NONE
Pointing RA	210.958820	210.9565994180965	Alternating exposures requested	N	N
Pointing Dec	54.336947	54.36415445357046	Primary exposure time	0.000000	3.2
Pointing Roll	61.767672	61.92611518245415			
SIM focus pos (mm)	-0.684267	-0.6828225247311905			
SIM defocus (mm)	0	0.001444936568705701			
SIM translation stage pos (mm)	-190.132523	-190.1400660498719			
SIM translation stage offset (mm)	0	0.00754346686406393			
Observation start time	220978103.184000	220977054.60186			
Observation start date	2005-01-01T14:47:19	2005-01-01T14:30:54			
Observation end time	221000103.184000	221000889.44043			
Observation end date	2005-01-01T20:53:59	2005-01-01T21:08:09			
Read mode	TIMED	TIMED			

## 2.3 Aspect





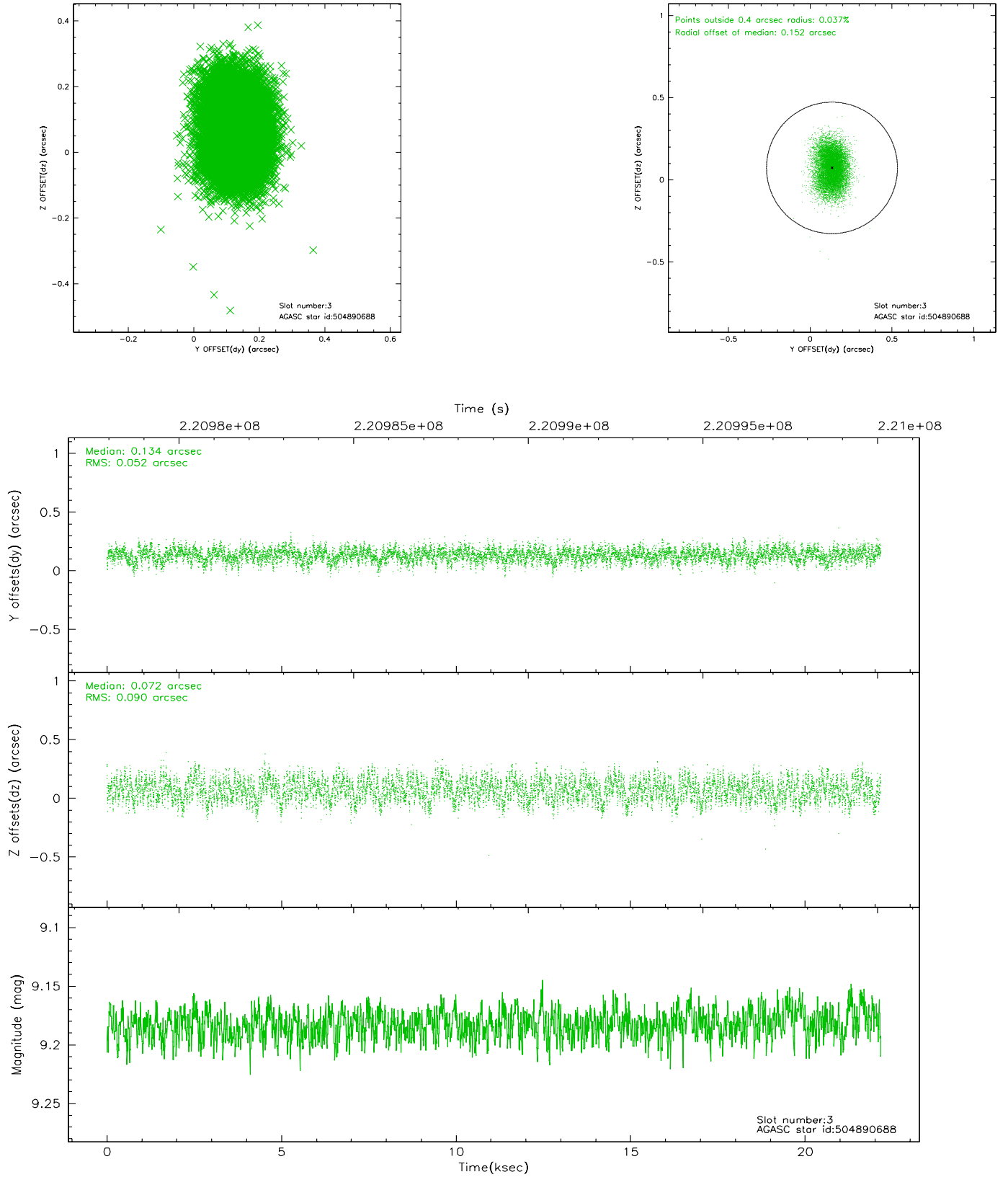
### Slot Statistics

slot	status	id	mag	n_pts	med_dy	med_dz	dr1	dr2	ra	dec	mean_y	mean_z
0	FID	ACIS-S-2	7.10	5407	-0.065	-0.019	0.007	0.014	0.000000	0.000000	-758.71	-1731.10
1	FID	ACIS-S-4	7.21	5407	0.083	0.036	0.005	0.014	0.000000	0.000000	2154.62	177.32
2	FID	ACIS-S-5	7.23	5407	-0.049	-0.009	0.007	0.014	0.000000	0.000000	-1811.37	171.06
3	GUIDE	504890688	9.18	10811	0.134	0.072	0.111	0.181	211.697686	53.837149	-835.28	-2230.34
4	GUIDE	504891480	8.07	10812	-0.002	-0.045	0.067	0.112	210.708012	54.666096	797.74	1021.01
5	GUIDE	504894408	9.26	10806	-0.139	0.119	0.097	0.156	211.942794	54.047749	79.51	-2317.45
6	GUIDE	504894856	8.98	10812	0.138	-0.128	0.086	0.136	209.819510	54.132689	-1767.42	1778.21
7	GUIDE	505292416	9.30	10808	-0.130	-0.018	0.091	0.146	210.920759	55.040479	2194.19	1268.24

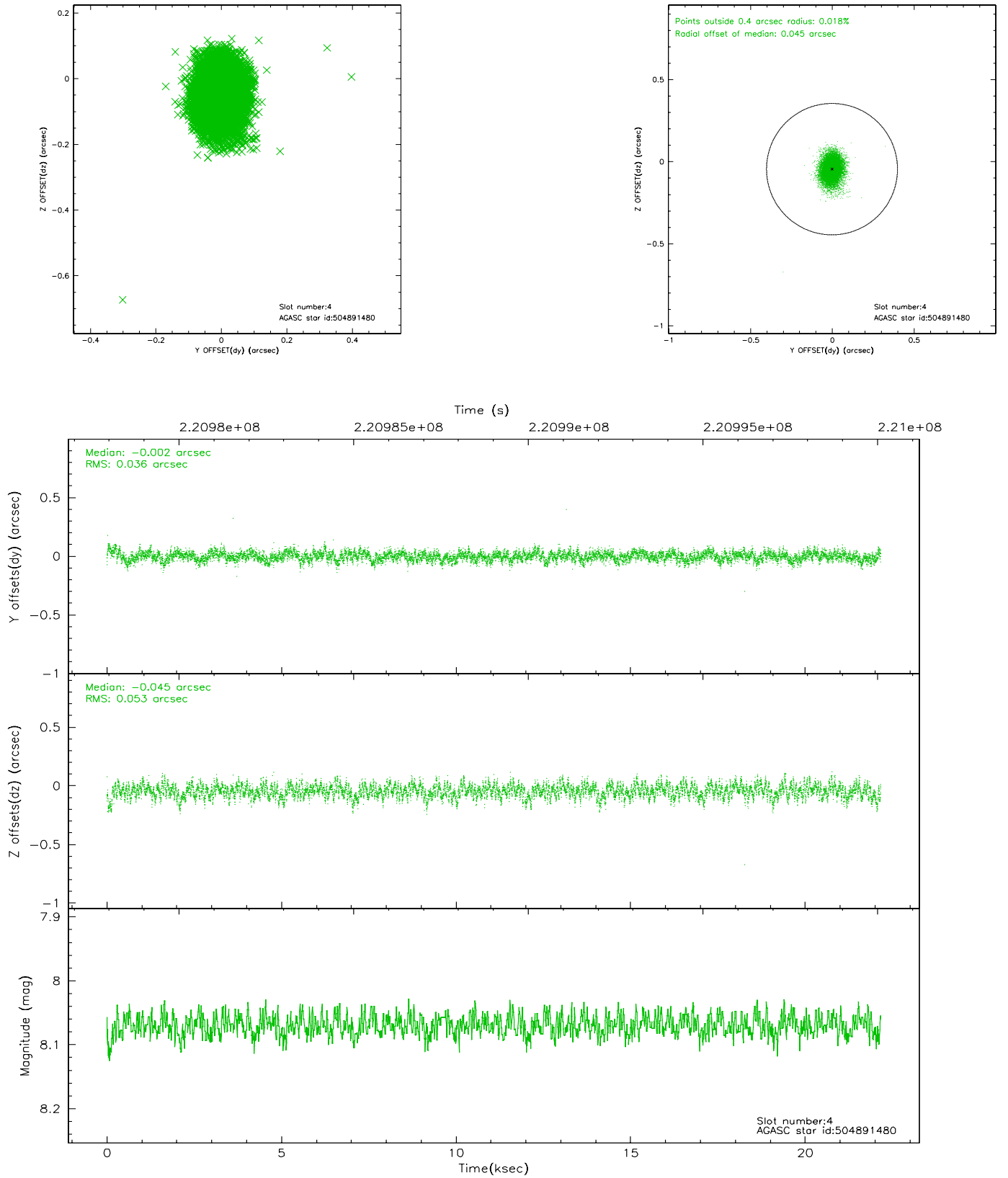


## 2.4 Star Slots

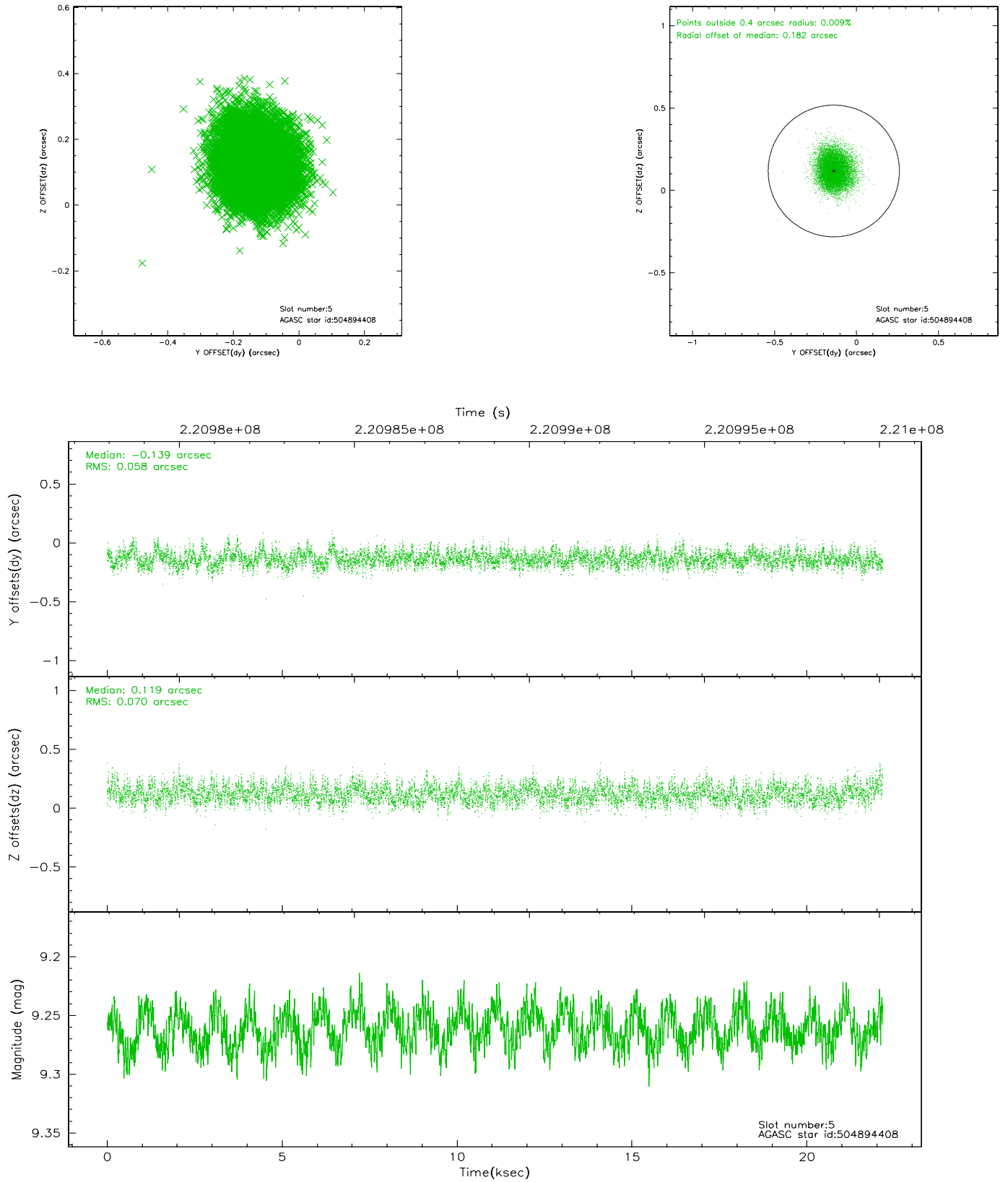
### 2.4.1 Slot 3



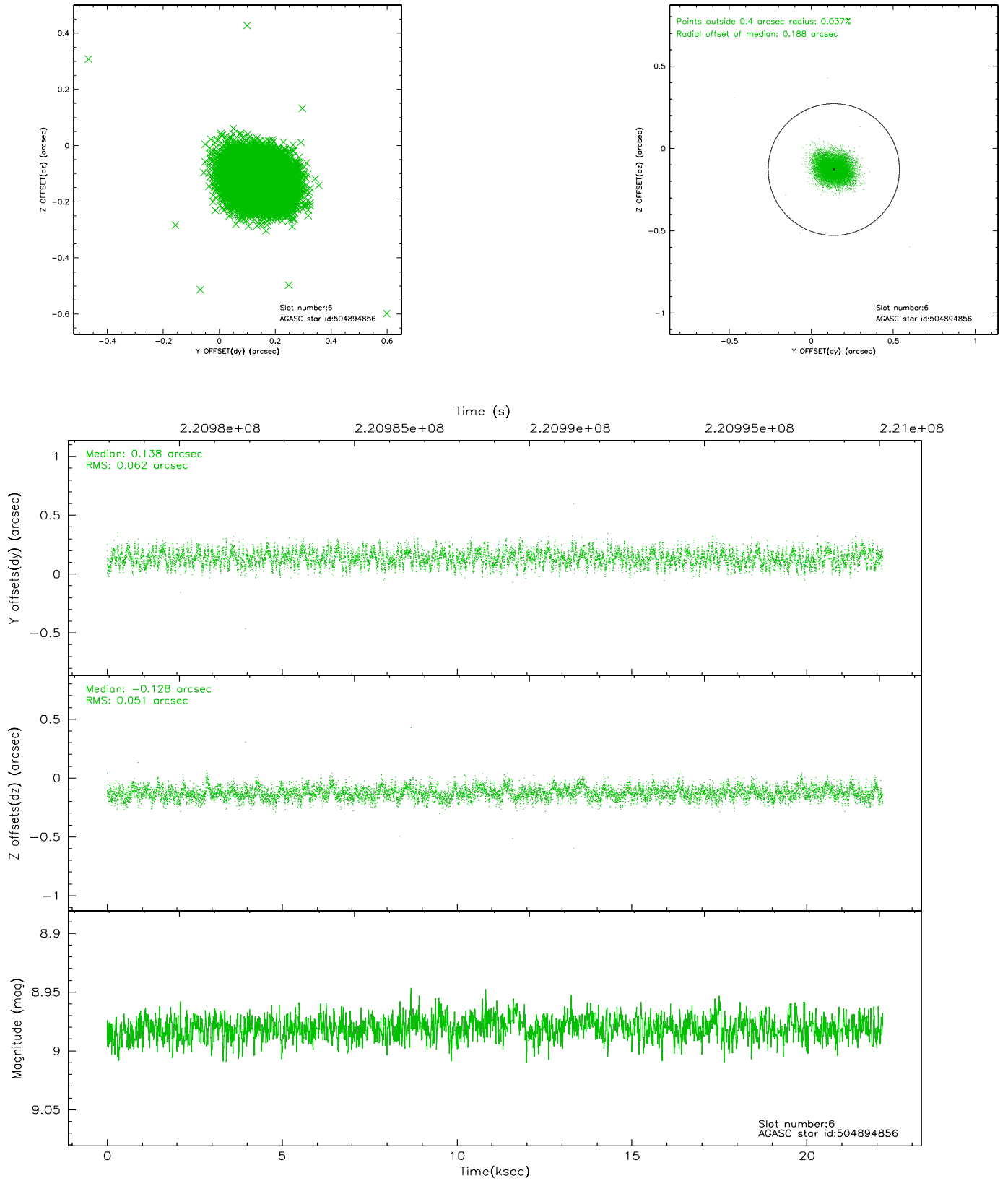
## 2.4.2 Slot 4



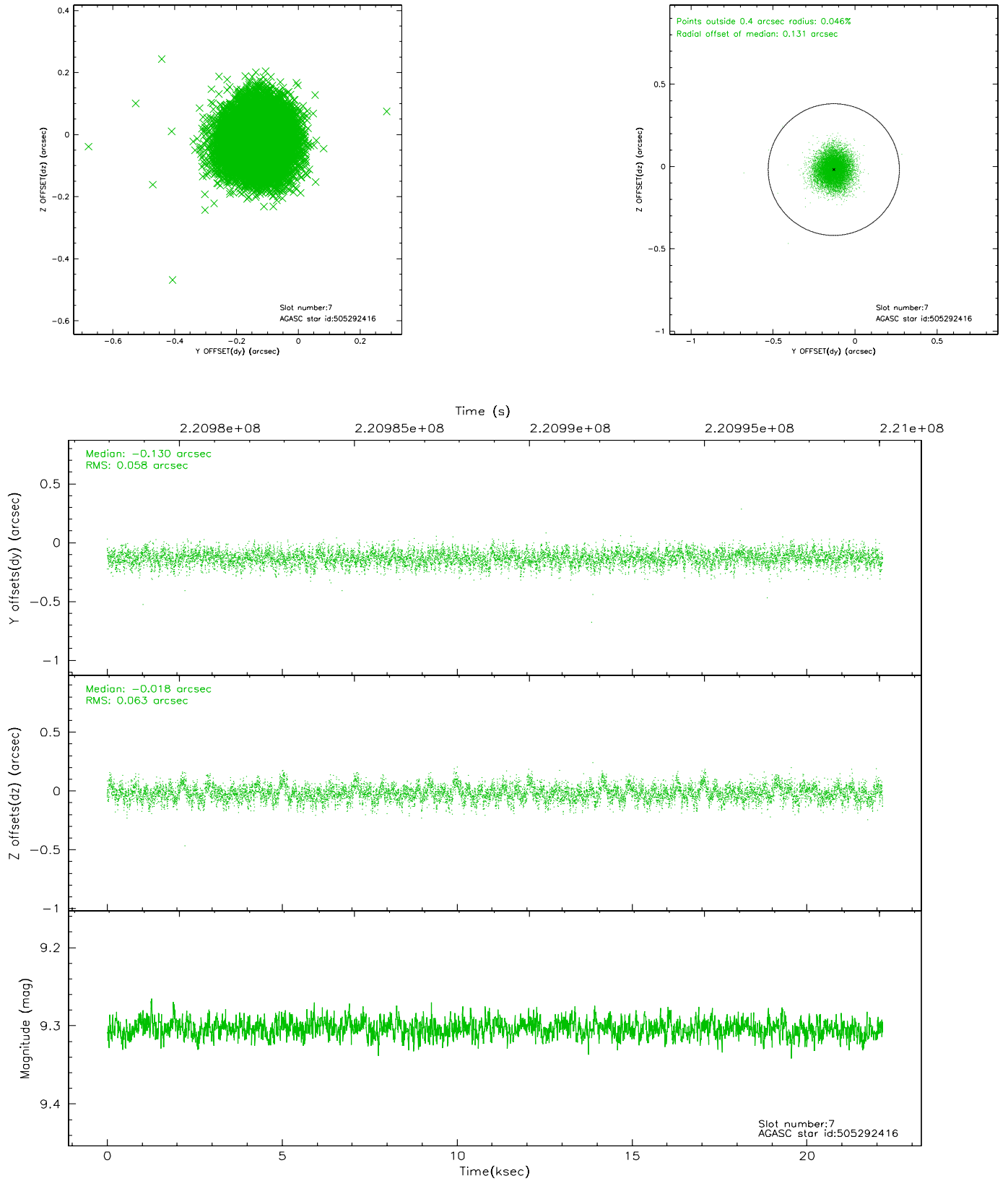
### 2.4.3 Slot 5



## 2.4.4 Slot 6

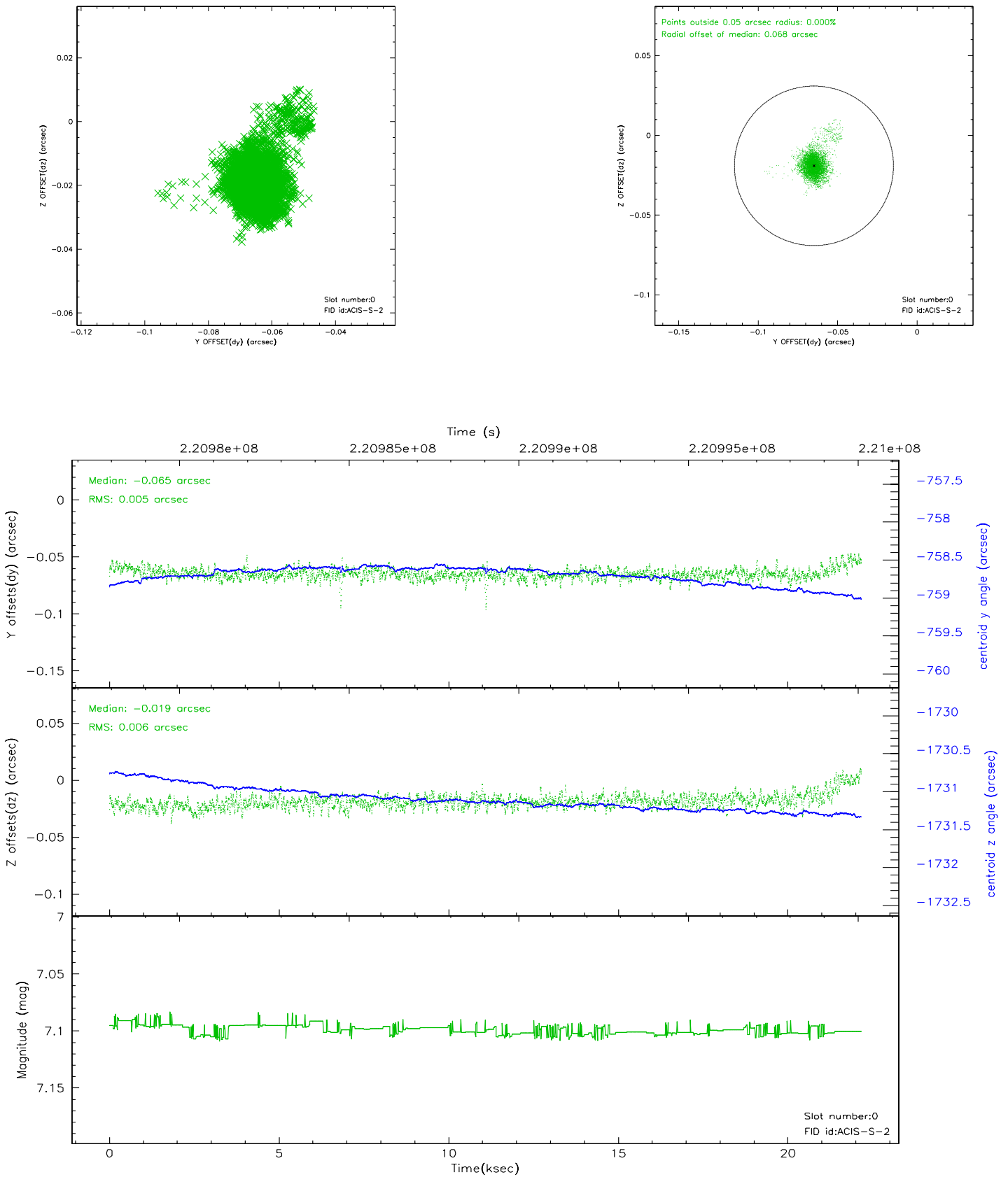


## 2.4.5 Slot 7

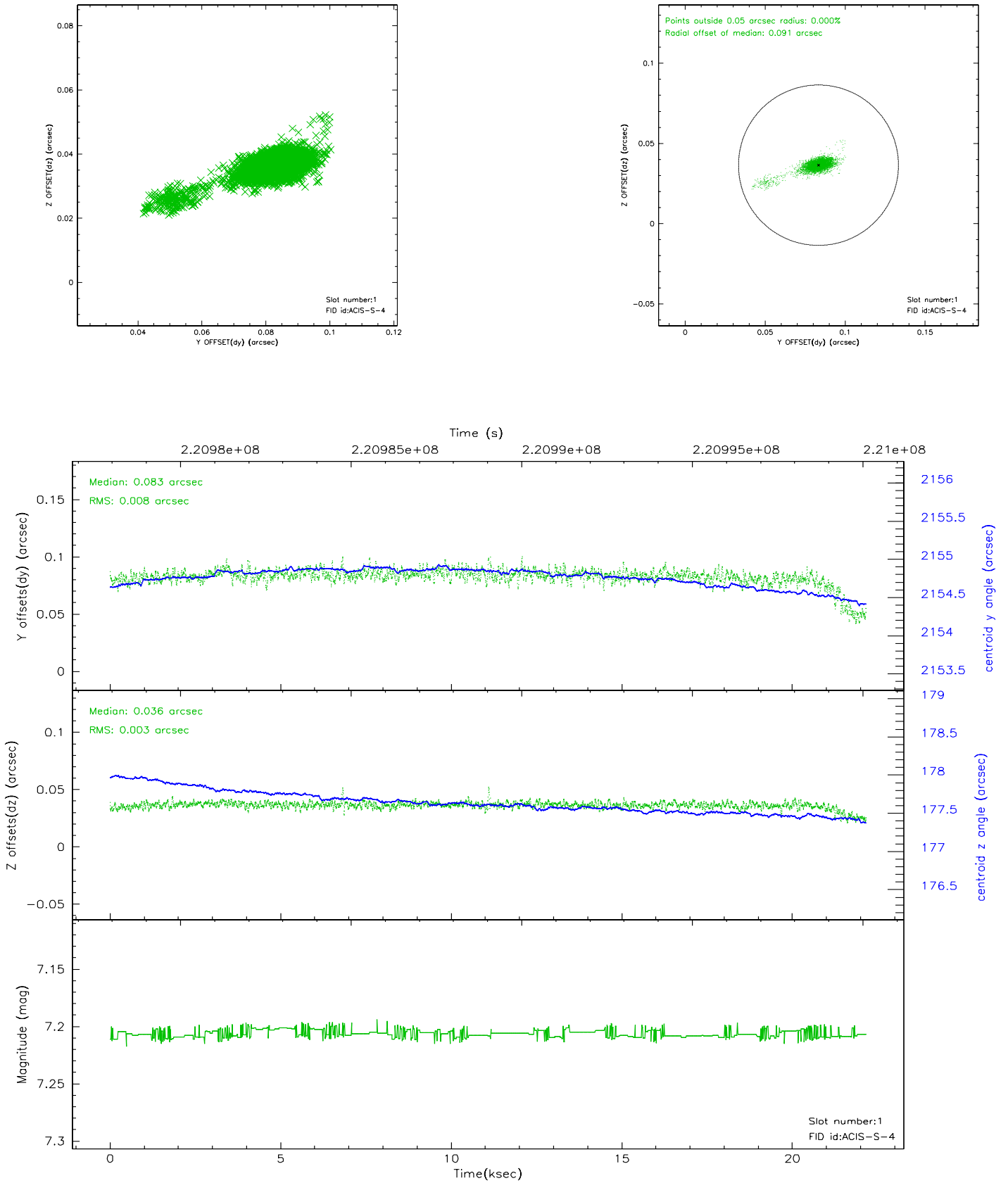


## 2.5 FID Slots

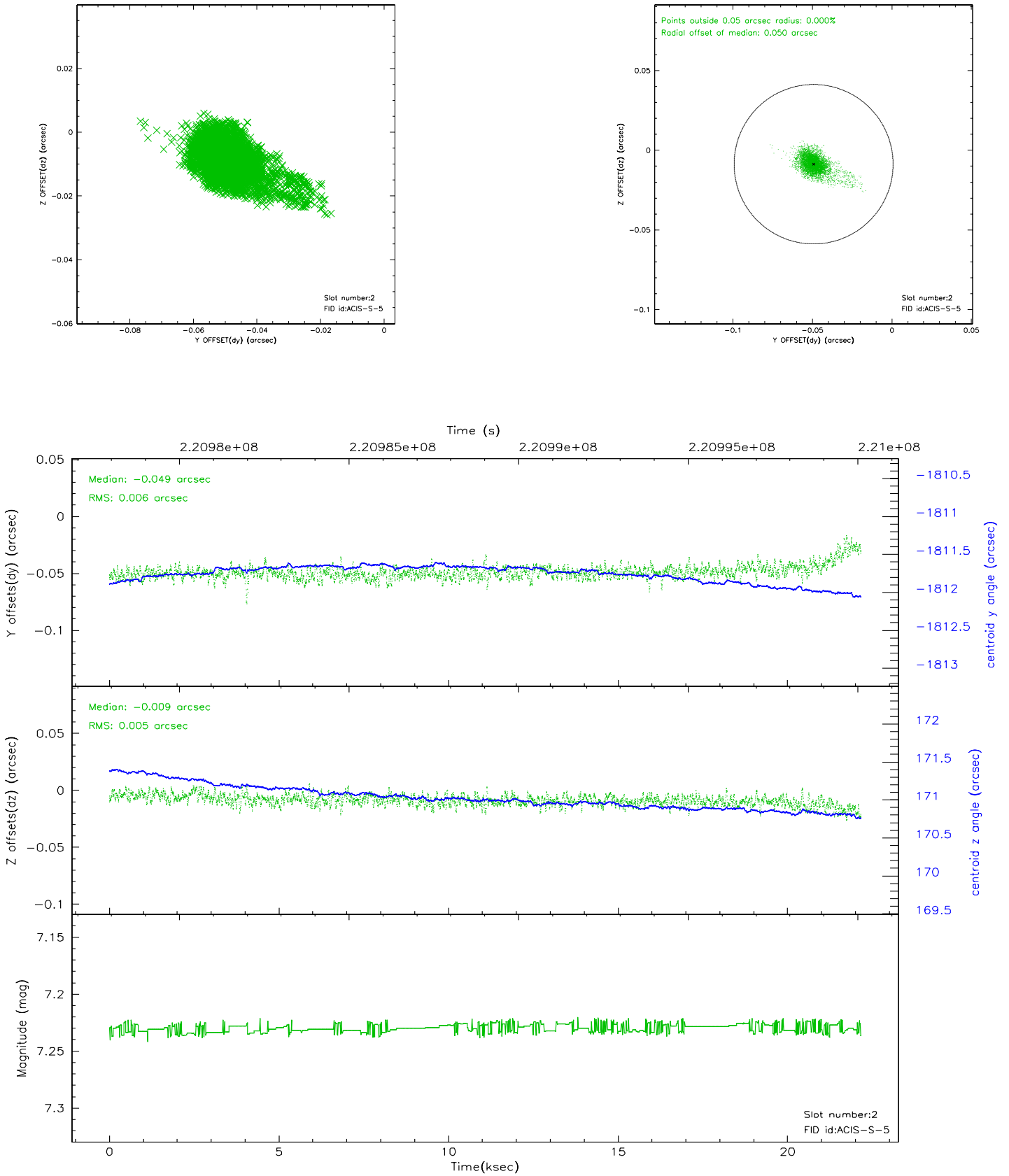
### 2.5.1 Slot 0



## 2.5.2 Slot 1

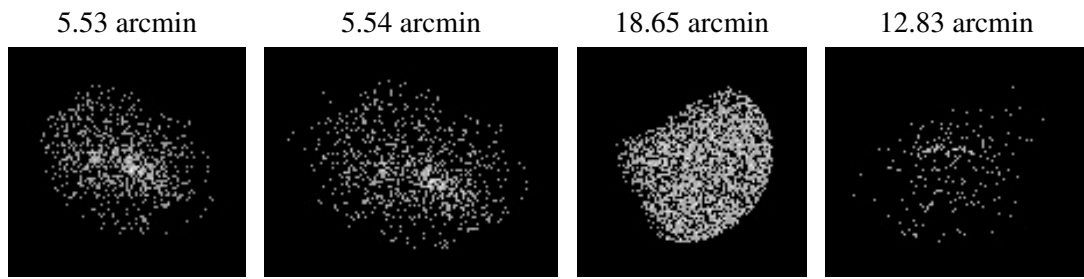


### 2.5.3 Slot 2





### 3 Point Sources



## A Summary

### A.1 Status

V&V Scientist	Jen Lauer
V&V Date (YYYY-MM-DD)	2006.03.16
V&V Edition	1
V&V Disposition and Status	OK
V&V Charge Time	22.13439

### A.2 Comments