

V&V Reference Report

L2 ASCDS Version : 8.5

Observation 4730 - L2 Version 3
Chandra X-Ray Center

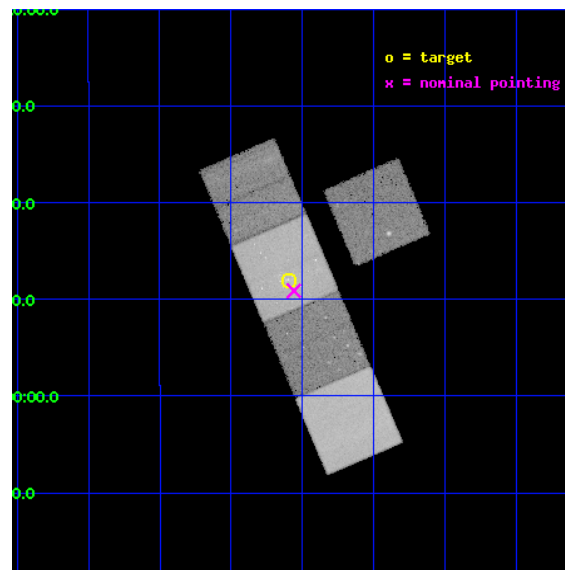
L2 Processing Date : Dec 7 2012

Contents

1	Front	2
2	OBI	3
2.1	OBI	3
2.1.1	Images	3
2.1.2	Bias	3
2.1.3	Parameters	4
2.1.4	Events	4
2.2	Compared Parameters	5
2.3	Aspect	6
2.4	Star Slots	9
2.4.1	Slot 3	9
2.4.2	Slot 4	10
2.4.3	Slot 5	11
2.4.4	Slot 6	12
2.4.5	Slot 7	13
2.5	FID Slots	14
2.5.1	Slot 0	14
2.5.2	Slot 1	15
2.5.3	Slot 2	16
A	Summary	17
A.1	Status	17
A.2	Comments	17

1 Front

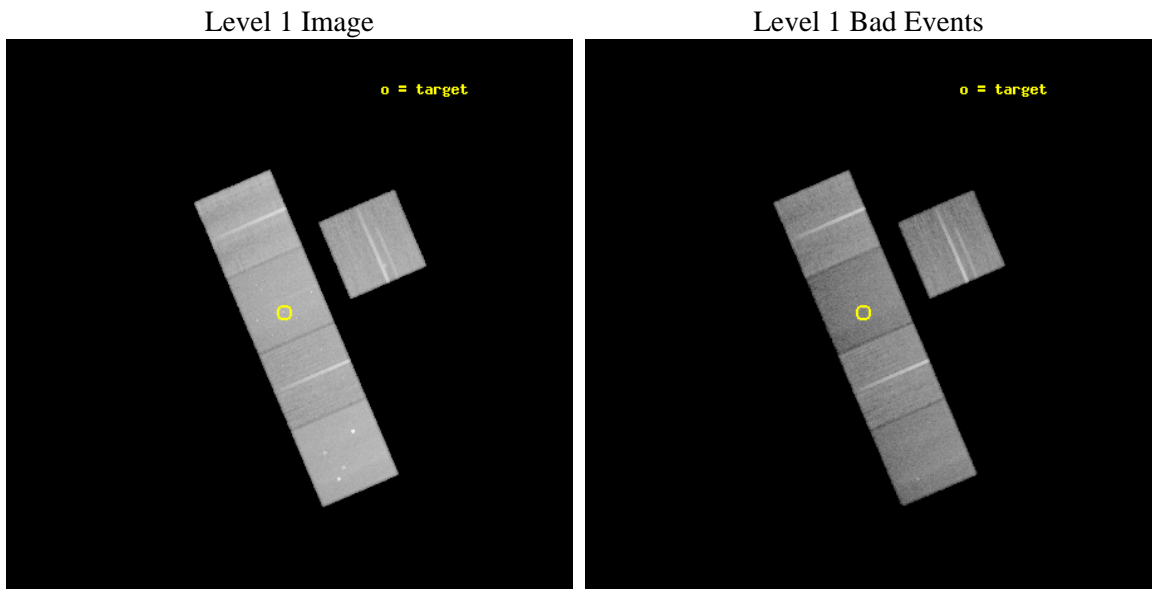
seq_num	600385	Sequence number
obs_id	4730	Observation id
title	Deep Chandra and Hubble Observations NGC 4697, the Nearest Optically Luminous, X-ray Faint Elliptical Galaxy	Proposal title
observer	Dr. CRAIG SARAZIN	Principal investigator
object	NGC4697	Source name
dtcycle	0	
cycle	P	events from which exps? Prim/Second/Both
ra_targ	192.149583	Observer's specified target RA [deg]
dec_targ	-5.800556	Observer's specified target Dec [deg]
ra_nom	192.13980015739	Nominal RA [deg]
dec_nom	-5.8189089193066	Nominal Dec [deg]
roll_nom	246.83229241454	Nominal Roll [deg]
revision	3	Processing version of data
ontime	40575.899921954	Sum of GTIs [s]
livetime	40045.74591793	Livetime [s]
ontime3	40569.617951691	Sum of GTIs [s]
ontime5	40575.899921954	Sum of GTIs [s]
ontime6	40572.758961707	Sum of GTIs [s]
ontime7	40575.899921954	Sum of GTIs [s]
ontime8	40575.899921954	Sum of GTIs [s]
l2events	375625	Number of level 2 events



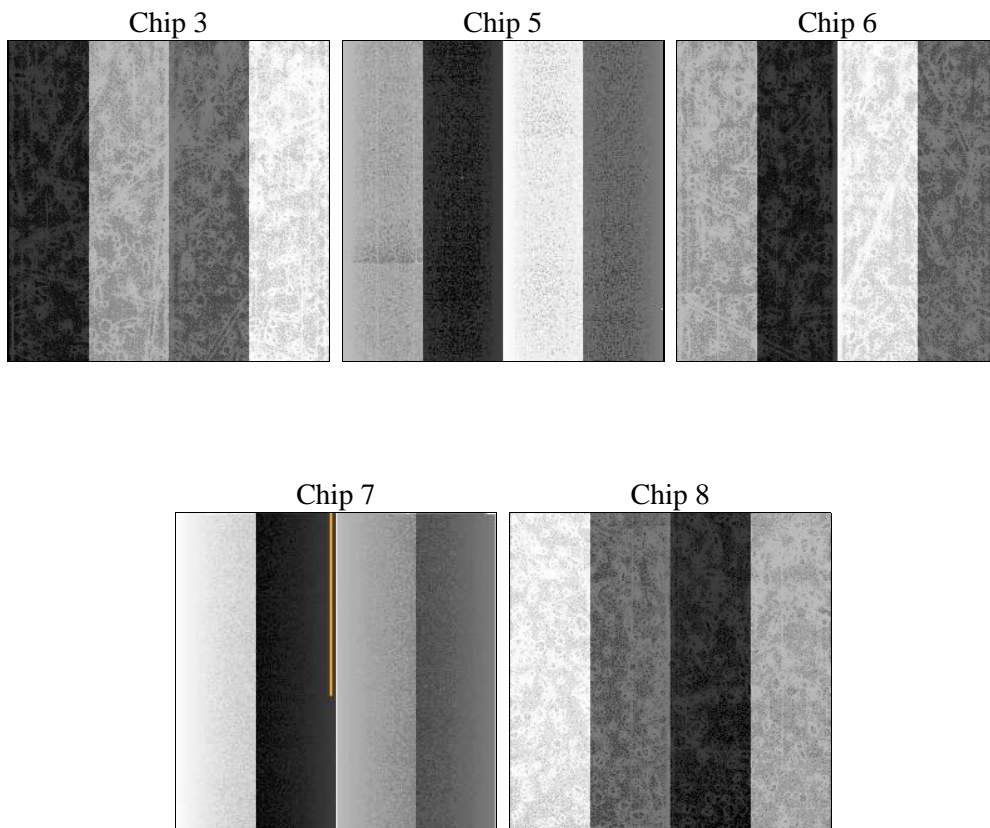
2 OBI

2.1 OBI

2.1.1 Images



2.1.2 Bias



2.1.3 Parameters

obi_num	1	Obi number	sched_exp_time	40400.000000	[s] Scheduled observation exposure time
ascdsver	8.5	Processing system revision	ontime	40575.899921954	Sum of GTIs [s]
caldsver	4.5.4	 	ontime3	40569.617951691	Sum of GTIs [s]
date	2012-12-07T18:54:04	Date and time of file creation	ontime5	40575.899921954	Sum of GTIs [s]
revision	3	Processing version of data	ontime6	40572.758961707	Sum of GTIs [s]
			ontime7	40575.899921954	Sum of GTIs [s]
			ontime8	40575.899921954	Sum of GTIs [s]
			l1events	1477451	Number of level 1 events

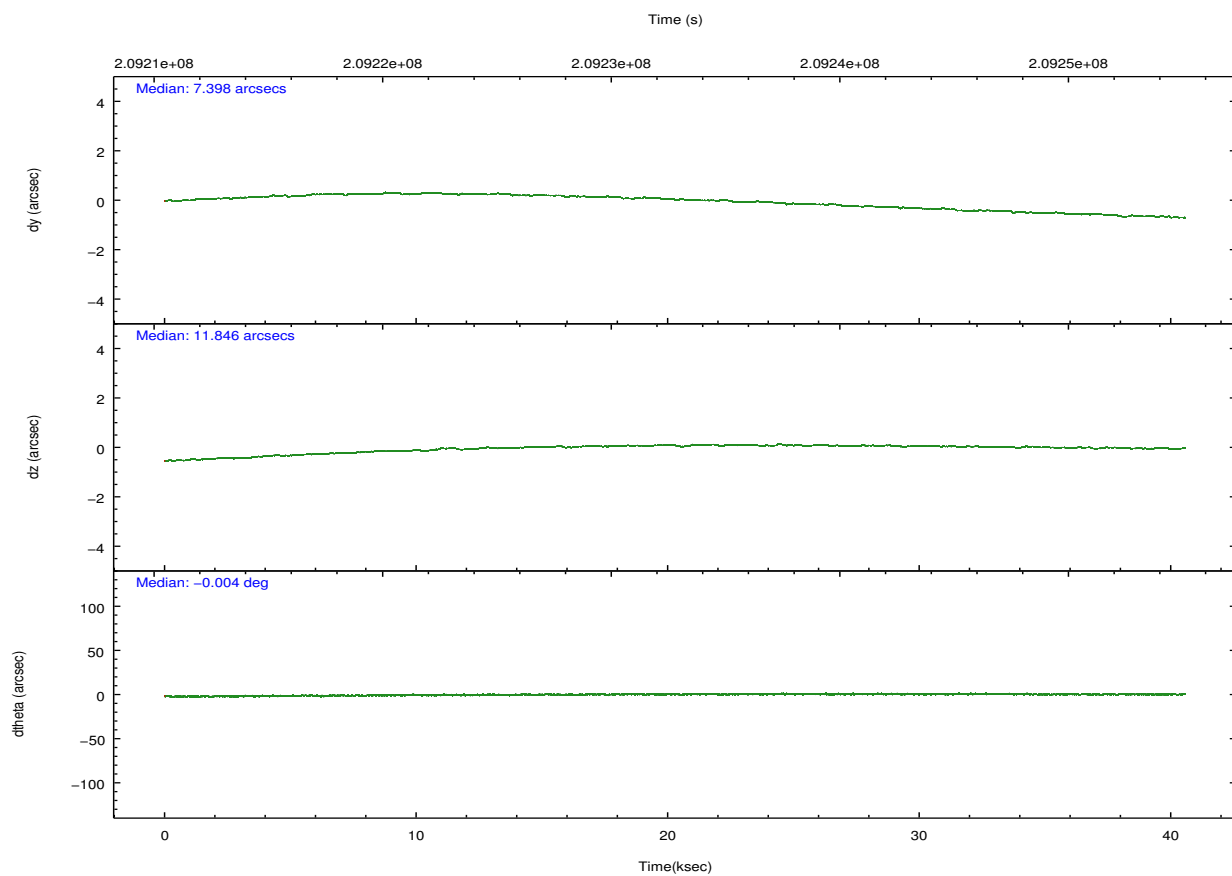
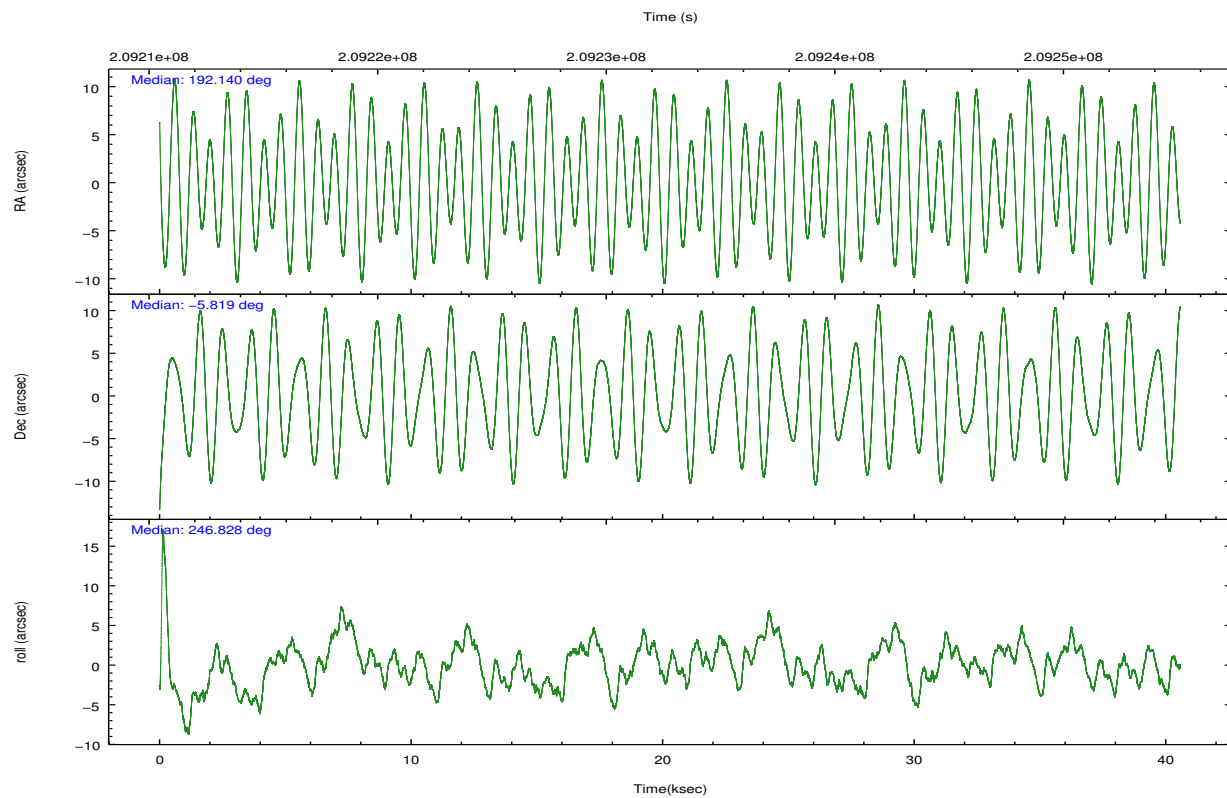
2.1.4 Events

	ccd 3	ccd 5	ccd 6	ccd 7	ccd 8		ccd 3	ccd 5	ccd 6	ccd 7	ccd 8
level 1 events	253565	345537	264590	290795	322964	grade 0 events	10473	21243	11559	15717	24127
rejected events	225322	173747	232641	154029	245813		4%	6%	4%	5%	7%
rejected %	88%	50%	87%	52%	76%	grade 1 events	164	567	114	271	221
							0%	0%	0%	0%	0%
						grade 2 events	5776	49722	6519	28284	16562
							2%	14%	2%	9%	5%
						grade 3 events	3088	7616	3334	12920	8273
							1%	2%	1%	4%	2%
						grade 4 events	3048	7421	3205	13077	7781
							1%	2%	1%	4%	2%
						grade 5 events	9602	27760	10126	29448	14055
							3%	8%	3%	10%	4%
						grade 6 events	6152	87733	7619	68265	21338
							2%	25%	2%	23%	6%
						grade 7 events	215262	143475	222114	122813	230607
							84%	41%	83%	42%	71%

2.2 Compared Parameters

Parameter	Planned	Actual	Parameter	Planned	Actual
Instrument	ACIS	ACIS	Obspar format version number	7	7
Detector	ACIS-35678	ACIS-35678	Obspar file type	PREDICTED	ACTUAL
Grating	NONE	NONE	Obspar update status	NONE	UPDATED
Data mode	VFAINT	VFAINT	Number of optional ACIS chips dropped	0	0
Observation mode	POINTING	POINTING	On-chip summing requested	N	N
[deg] Pointing RA	192.136186	192.1398001573901	Subarray requested	NONE	NONE
[deg] Pointing Dec	-5.791906	-5.818908919306571	Alternating exposures requested	N	N
[deg] Pointing Roll	246.675309	246.8322924145376	[s] Primary exposure time	0.000000	3.1
[mm] SIM focus pos	-0.684267	-0.6828225247311905			
[mm] SIM defocus	0	0.001444936568705701			
[mm] SIM translation stage pos	-190.132523	-190.1425803651734			
[mm] SIM translation stage offset	0	0.01005778216563158			
[s] Observation start time (MET)	209212684.184000	209211452.68733			
Observation start date	2004-08-18T10:37:00	2004-08-18T10:17:32			
[s] Observation end time (MET)	209253084.184000	209253752.38921			
Observation end date	2004-08-18T21:50:20	2004-08-18T22:02:32			
Read mode	TIMED	TIMED			

2.3 Aspect

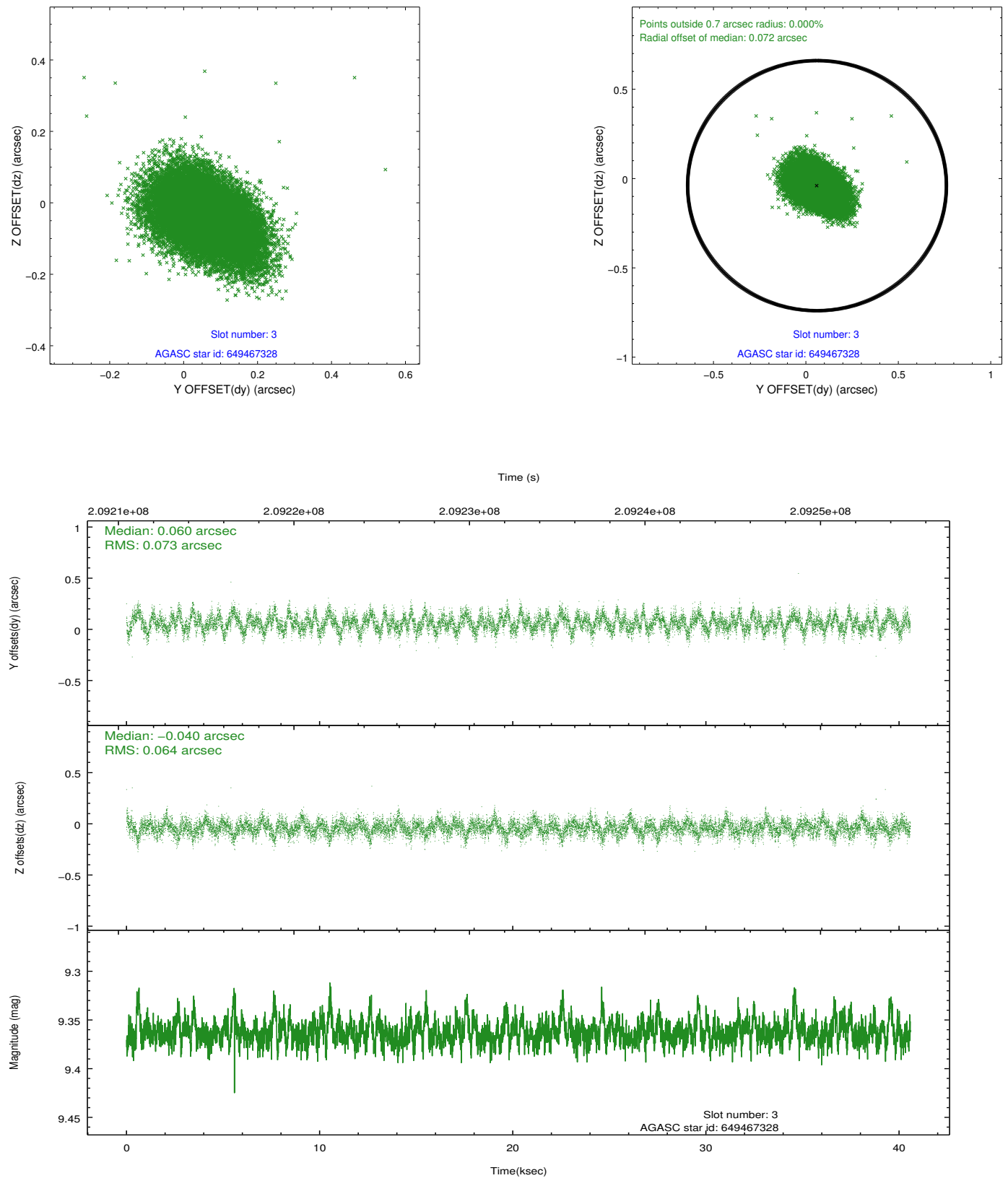


Slot Statistics

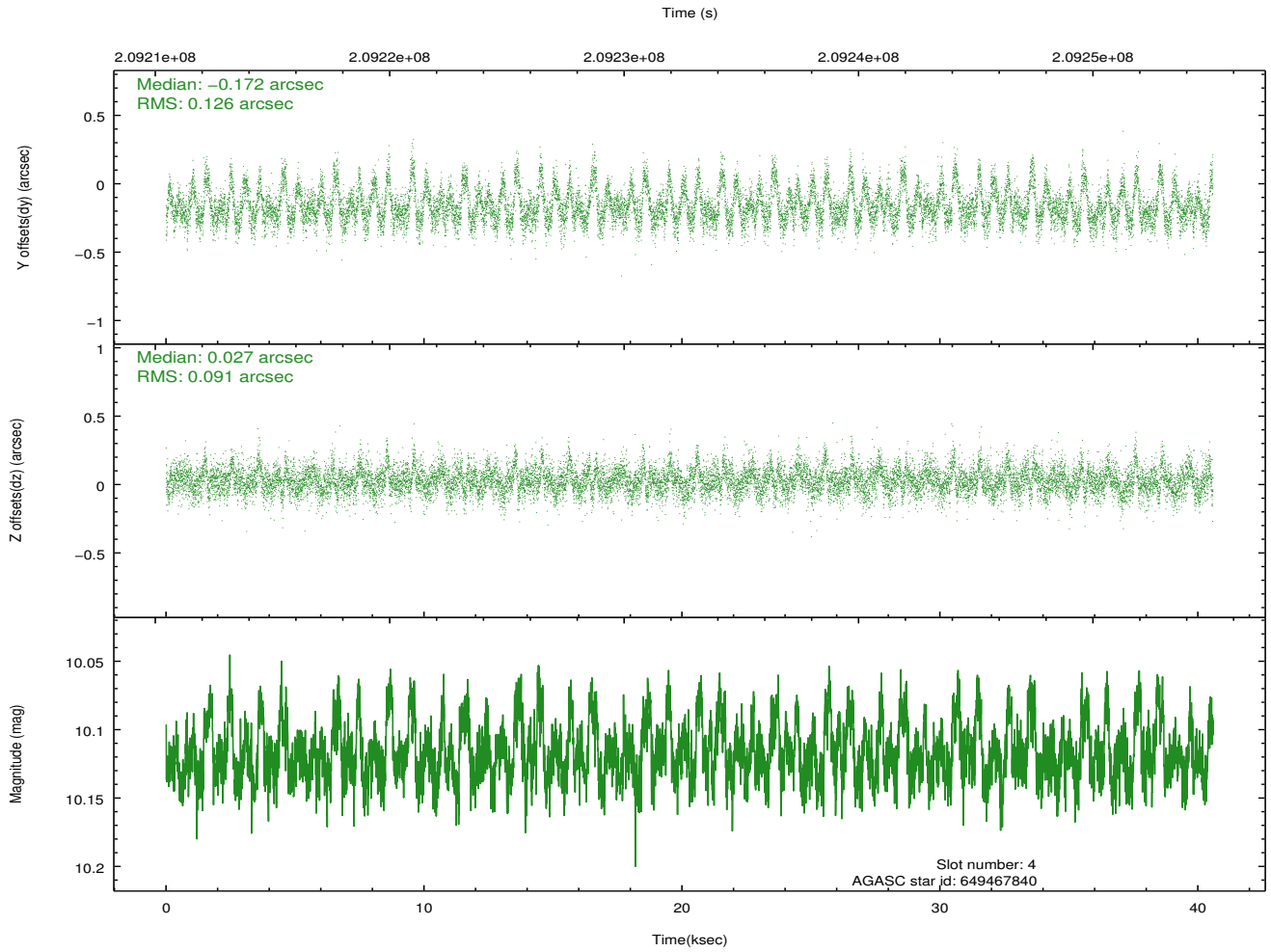
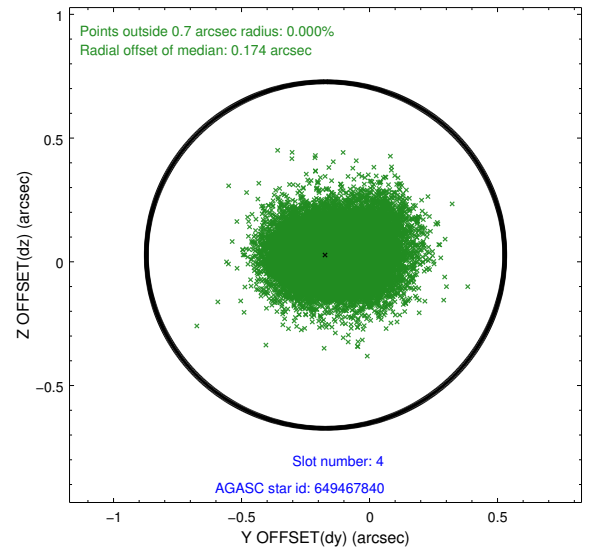
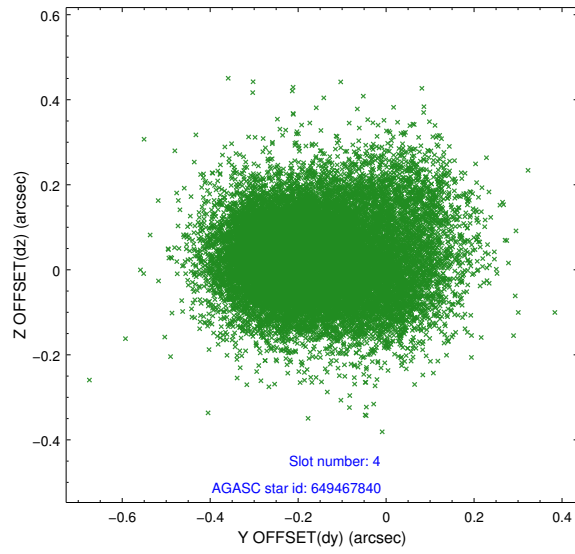
slot	status	id	mag	n_pts	med_dy	med_dz	dr1	dr2	ra	dec	mean_y	mean_z
0	FID	ACIS-S-1	7.19	9898	0.028	-0.081	0.010	0.016	0.000000	0.000000	935.95	-1728.75
1	FID	ACIS-S-4	7.20	9899	0.039	0.047	0.013	0.020	0.000000	0.000000	2153.41	175.50
2	FID	ACIS-S-5	7.23	9899	-0.093	0.047	0.013	0.025	0.000000	0.000000	-1812.99	169.17
3	GUIDE	649467328	9.36	19782	0.060	-0.040	0.102	0.171	192.312268	-5.822418	-148.54	622.60
4	GUIDE	649467840	10.12	19764	-0.172	0.027	0.161	0.283	191.989076	-5.066352	-2189.37	-1518.71
5	GUIDE	649469056	9.62	19746	-0.036	0.072	0.111	0.190	192.411237	-6.079132	560.15	1313.97
6	GUIDE	649471008	8.76	19784	0.100	-0.221	0.090	0.156	191.883055	-5.890695	686.15	-691.53
7	GUIDE	649472056	6.43	19796	0.048	0.159	0.070	0.110	191.889264	-6.301748	2036.01	-84.11

2.4 Star Slots

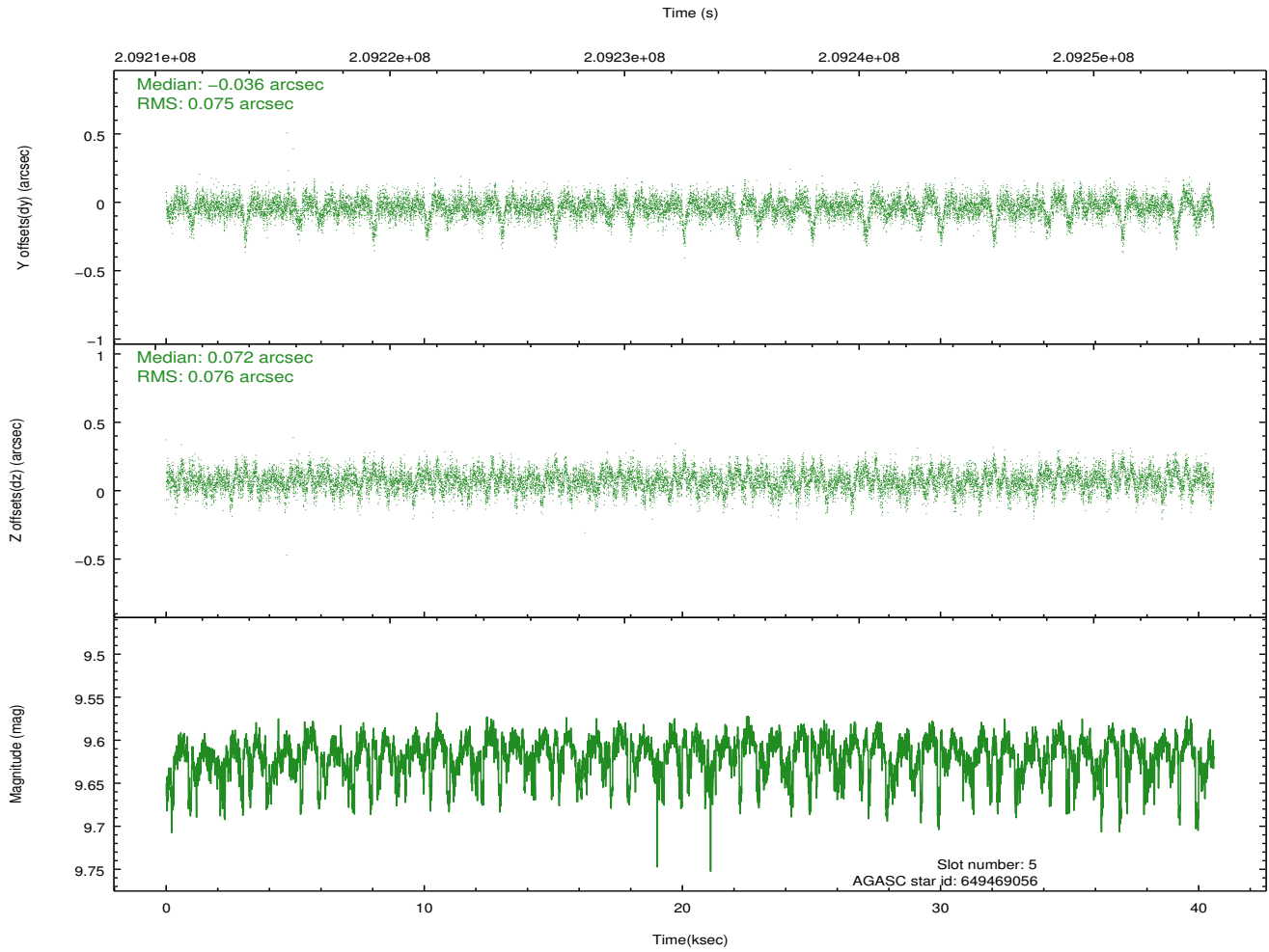
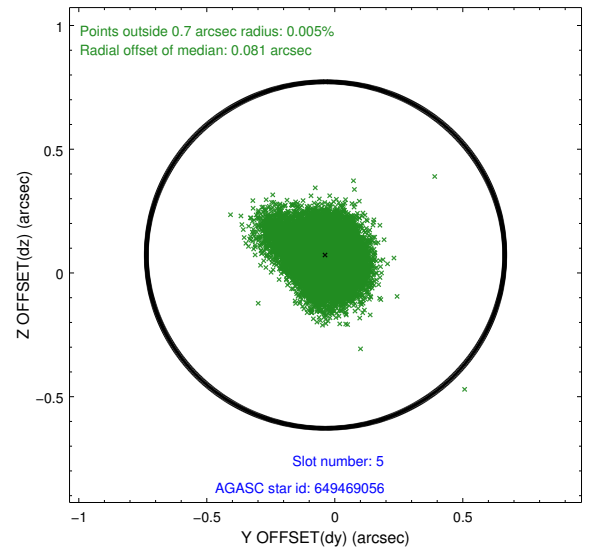
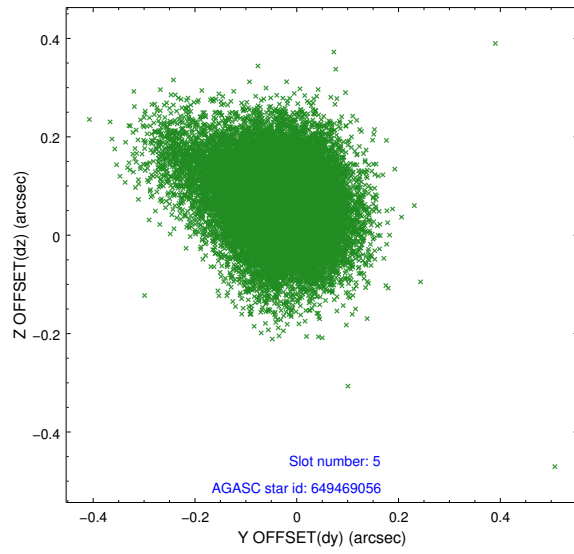
2.4.1 Slot 3



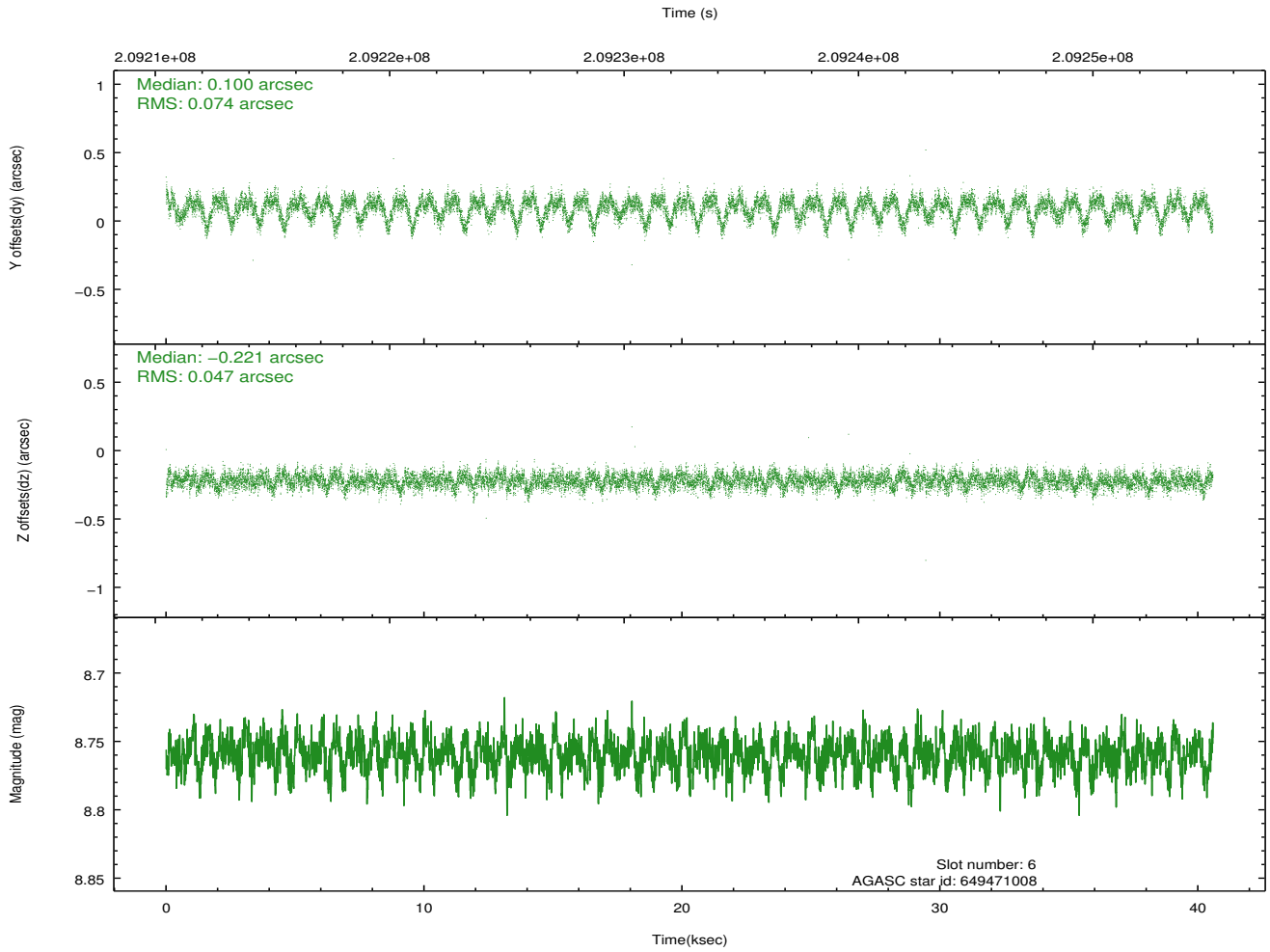
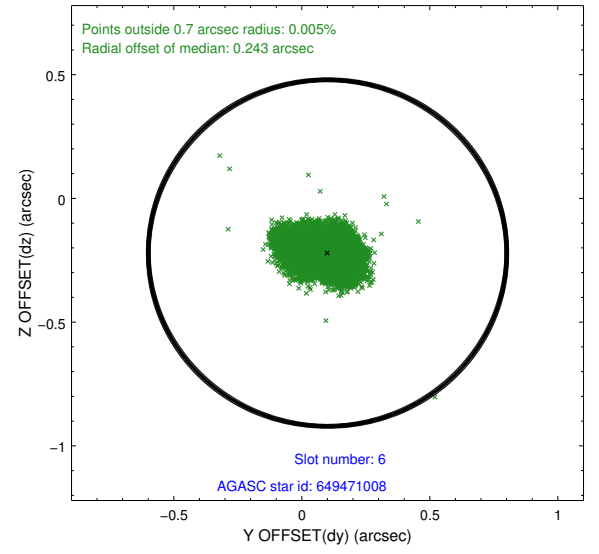
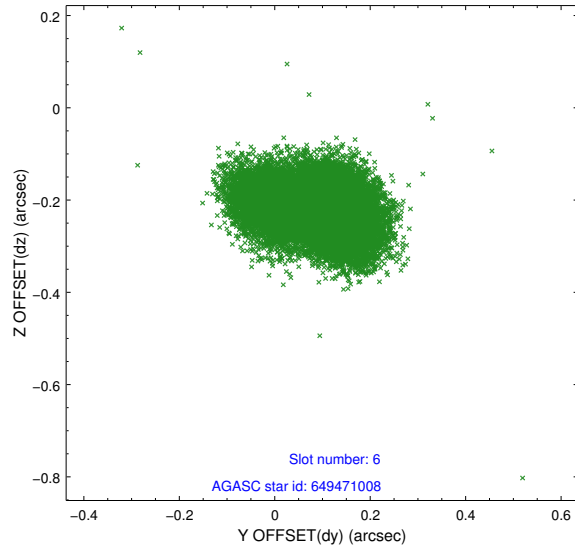
2.4.2 Slot 4



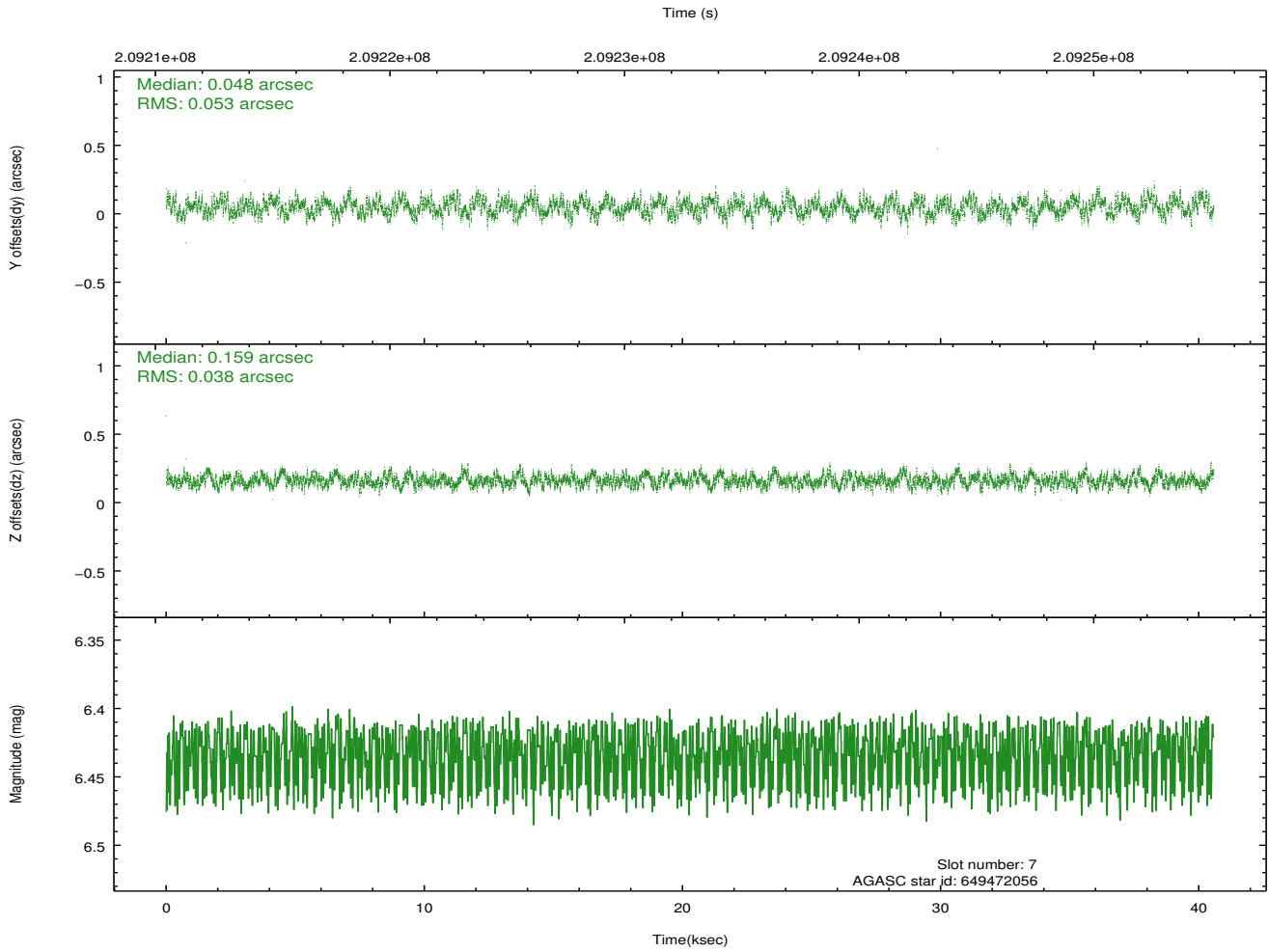
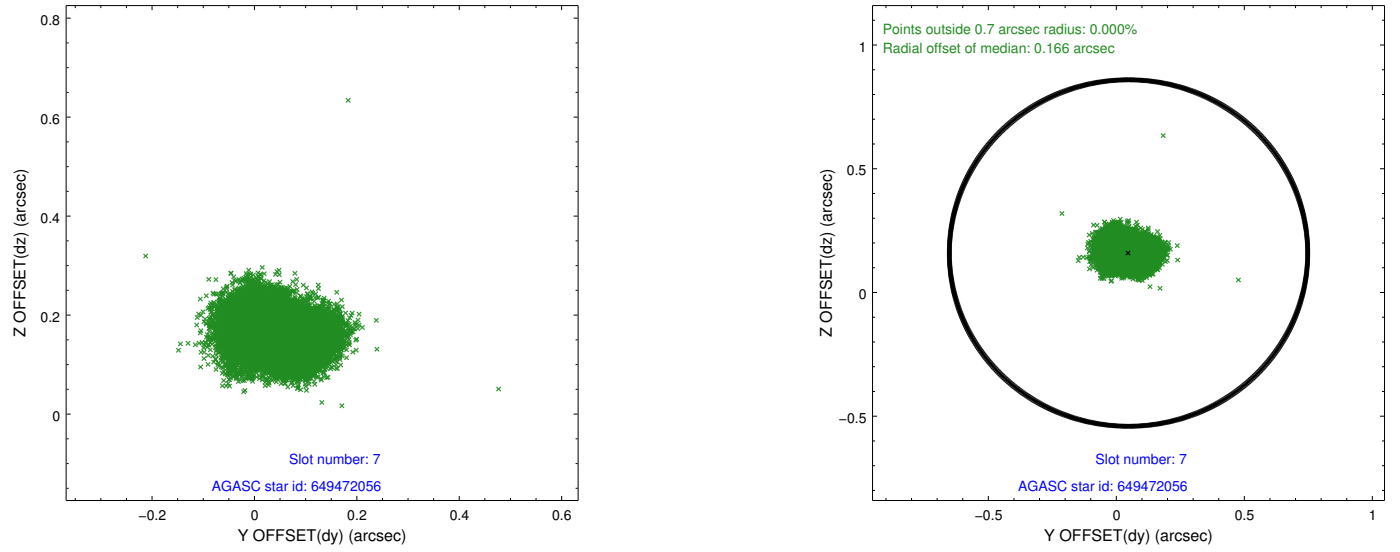
2.4.3 Slot 5



2.4.4 Slot 6

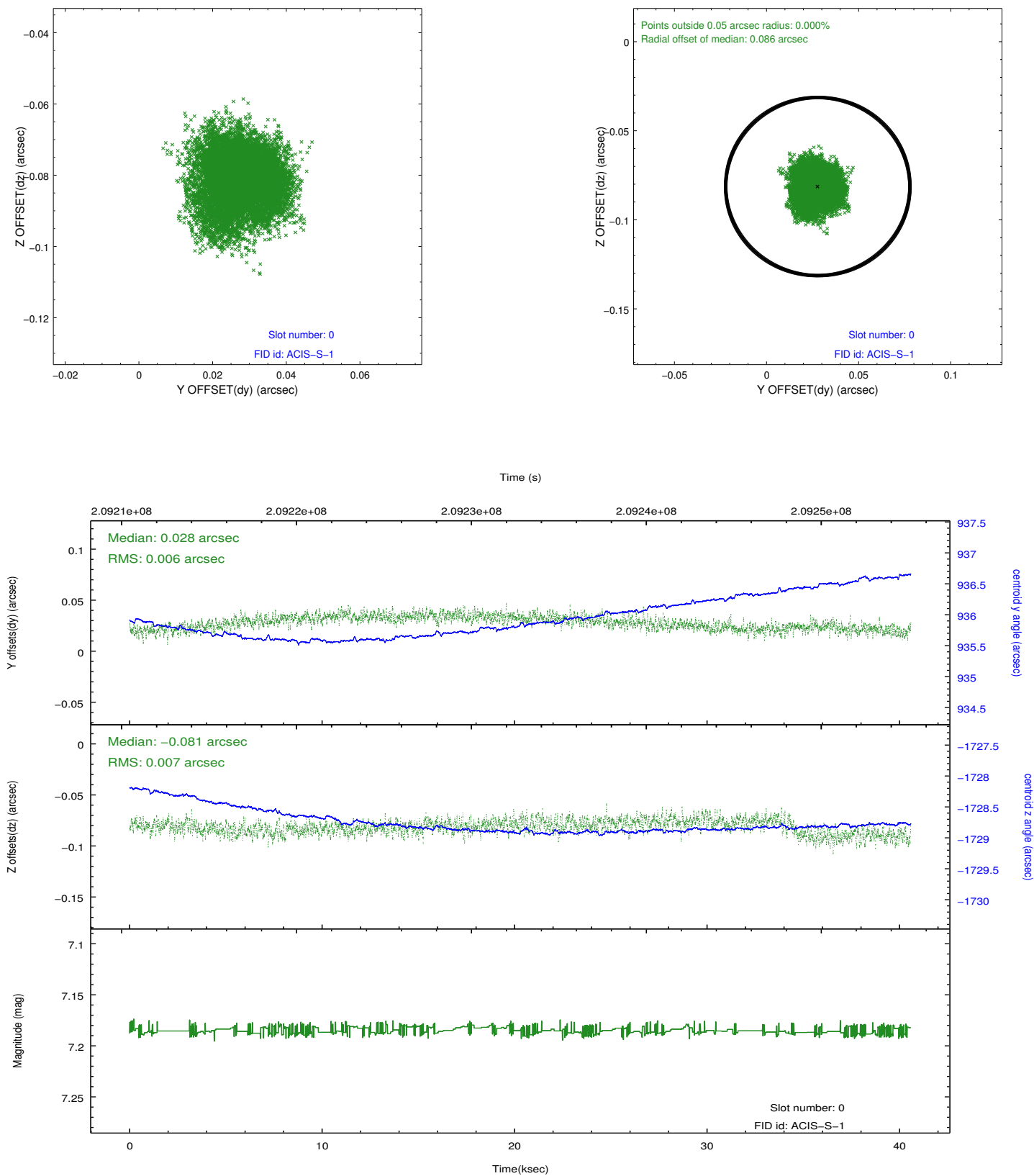


2.4.5 Slot 7

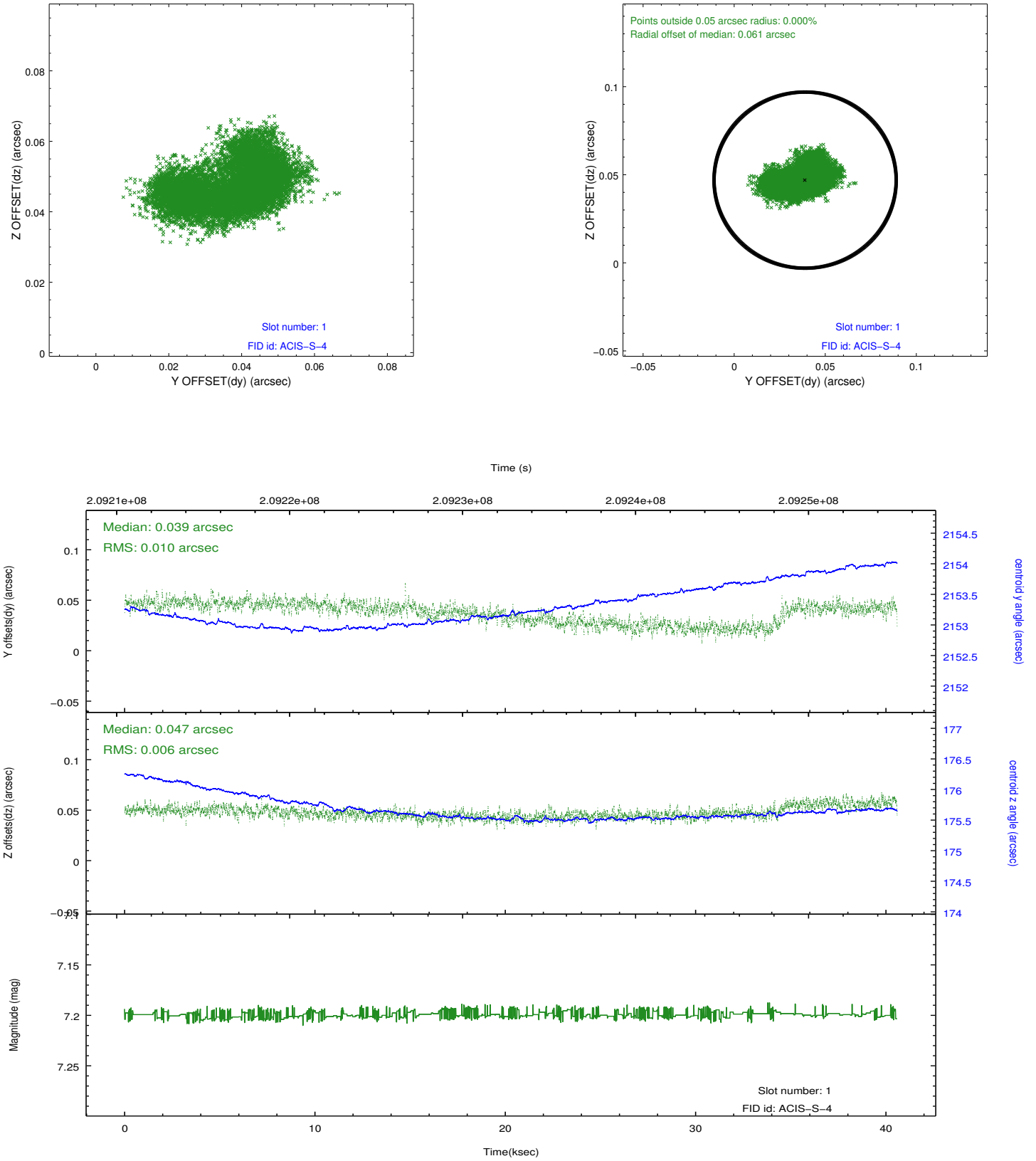


2.5 FID Slots

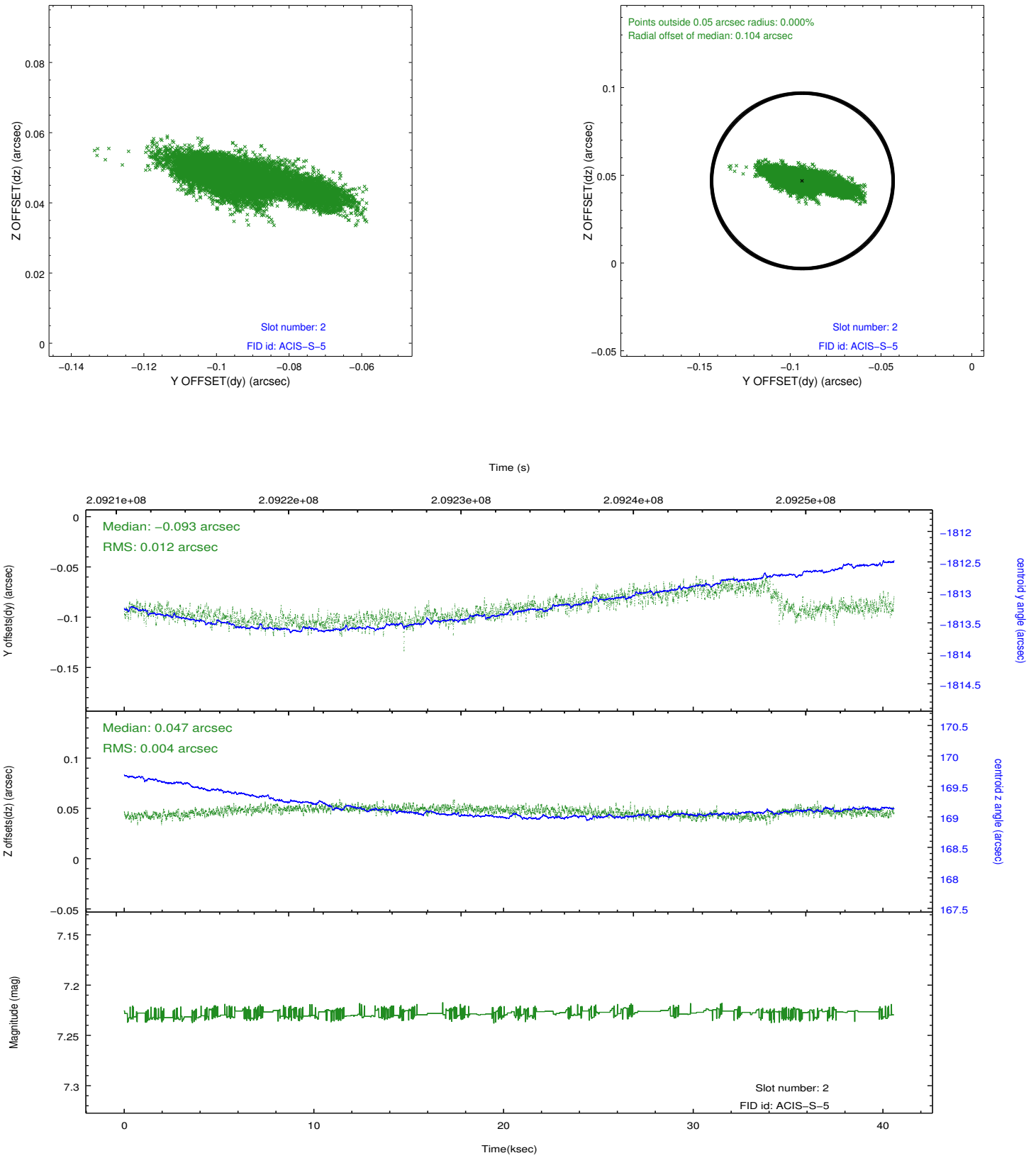
2.5.1 Slot 0



2.5.2 Slot 1



2.5.3 Slot 2



A Summary

A.1 Status

V&V Scientist	Jen Lauer
V&V Date (YYYY-MM-DD)	2012.12.21
V&V Edition	1
V&V Disposition and Status	OK
V&V Charge Time	40.575

A.2 Comments

Window preference not met. Joint Proposal: HST