

V&V Reference Report

L2 ASCDS Version : 7.6.7.2

Observation 4730 - L2 Version 001
Chandra X-Ray Center

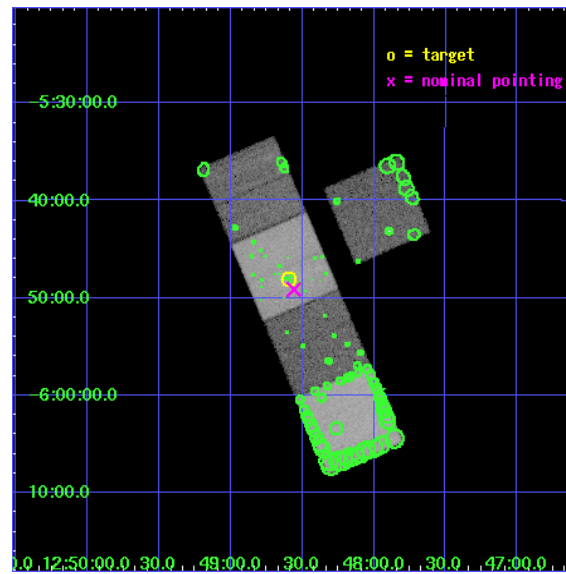
L2 Processing Date : Apr 25 2006

Contents

1	Front	2
2	OBI	3
2.1	OBI	3
2.1.1	Images	3
2.1.2	Bias	3
2.1.3	Parameters	4
2.1.4	Events	4
2.2	Compared Parameters	5
2.3	Aspect	6
2.4	Star Slots	9
2.4.1	Slot 3	9
2.4.2	Slot 4	10
2.4.3	Slot 5	11
2.4.4	Slot 6	12
2.4.5	Slot 7	13
2.5	FID Slots	14
2.5.1	Slot 0	14
2.5.2	Slot 1	15
2.5.3	Slot 2	16
3	Point Sources	17
A	Summary	18
A.1	Status	18
A.2	Comments	18

1 Front

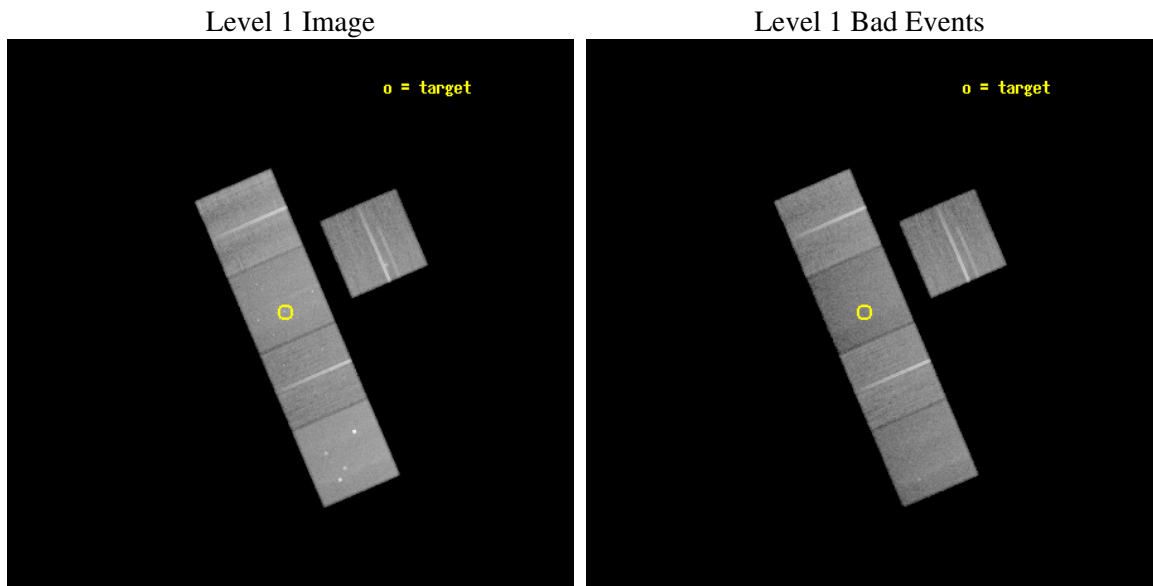
seq_num	600385
obs_id	4730
title	Deep Chandra and Hubble Observations NGC 4697, the Nearest Optically Luminous, X-ray Faint Elliptical Galaxy
observer	Dr. Craig Sarazin
object	NGC4697
dtcycle	0
cycle	P
ra_targ	192.149583
dec_targ	-5.800556
ra_nom	192.1398112145
dec_nom	-5.8188834098522
roll_nom	246.83229352934
revision	2
ontime	40575.899921983
livetime	40045.74591796
ontime3	40569.617951721
ontime5	40575.899921983
ontime6	40572.758961737
ontime7	40575.899921983
ontime8	40575.899921983
l2events	362439



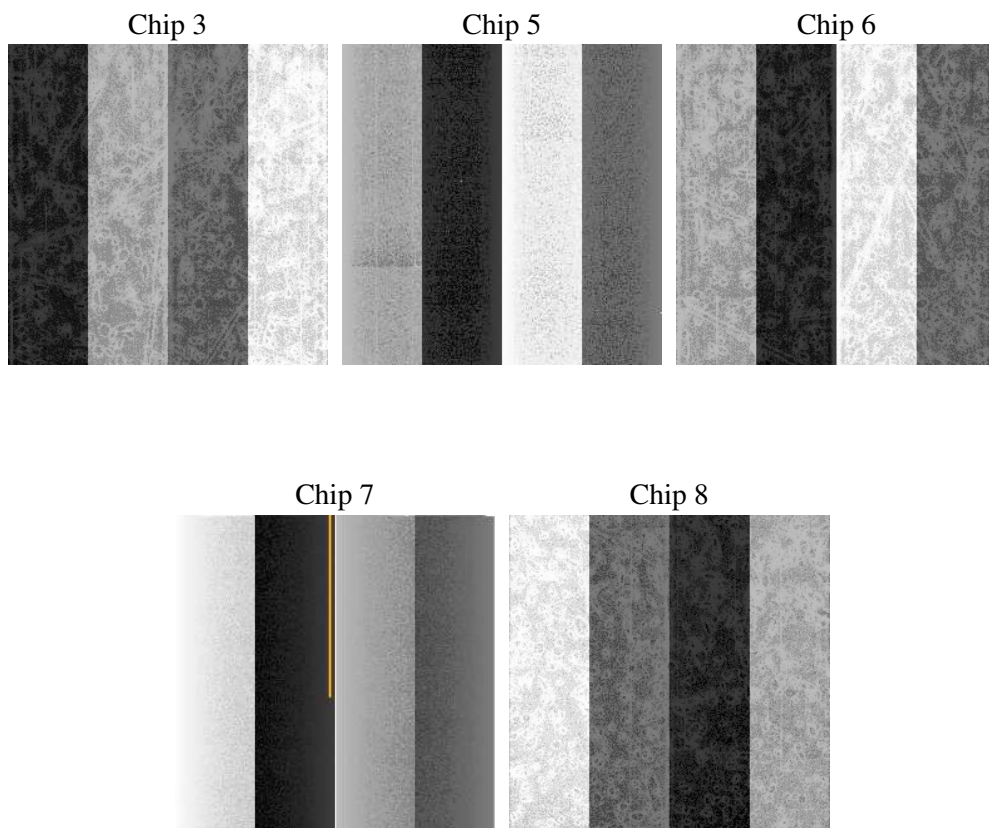
2 OBI

2.1 OBI

2.1.1 Images



2.1.2 Bias



2.1.3 Parameters

obi_num	1
ascdsver	7.6.7.2
caldbver	3.2.1
date	2006-04-25T01:16:58
revision	2

sched_exp_time	40400.000000
ontime	41046.598876625
ontime3	41040.316906363
ontime5	41046.598876625
ontime6	41043.457916379
ontime7	41046.598876625
ontime8	41046.598876625
l1events	1477451

2.1.4 Events

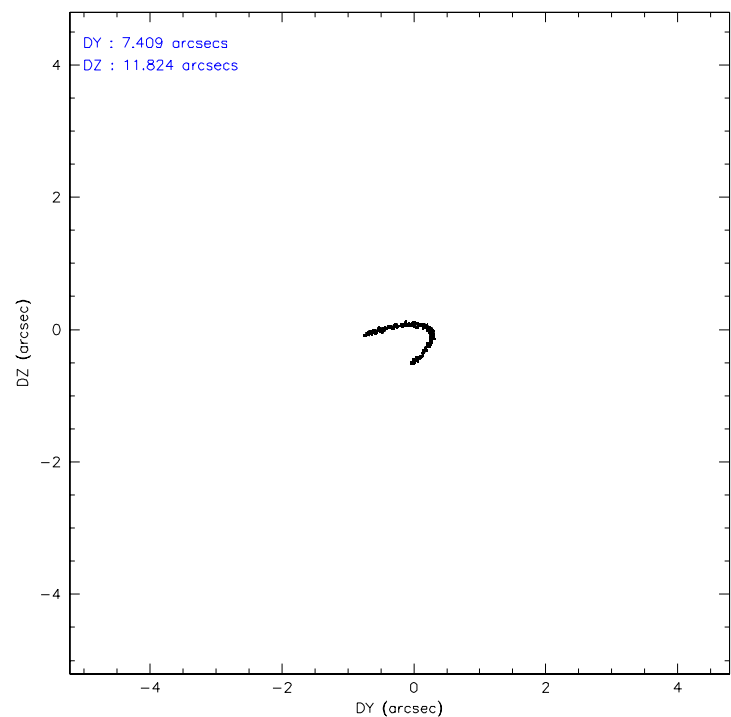
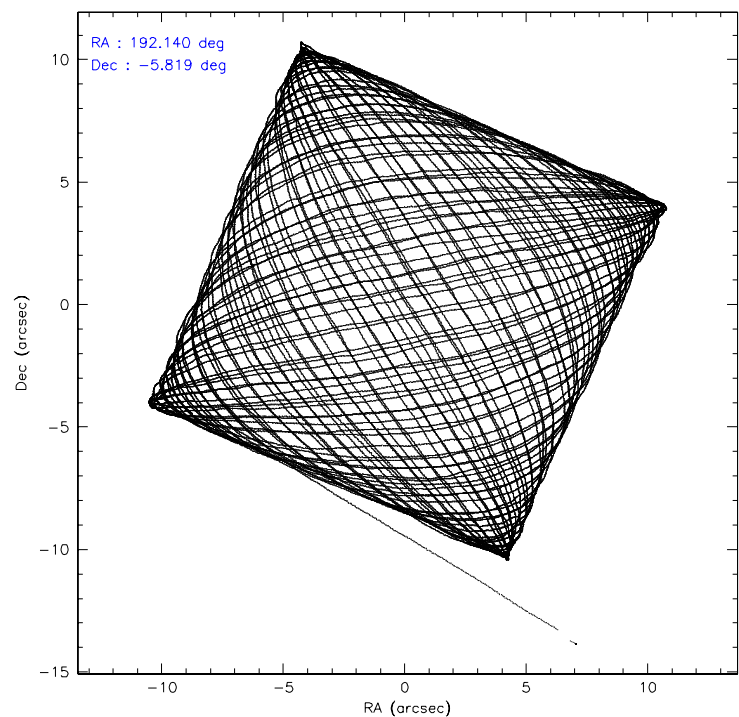
	ccd 3	ccd 5	ccd 6	ccd 7	ccd 8
level 1 events	253565	345537	264590	290795	322964
rejected events	225323	179334	232639	163821	245812
rejected %	88%	51%	87%	56%	76%

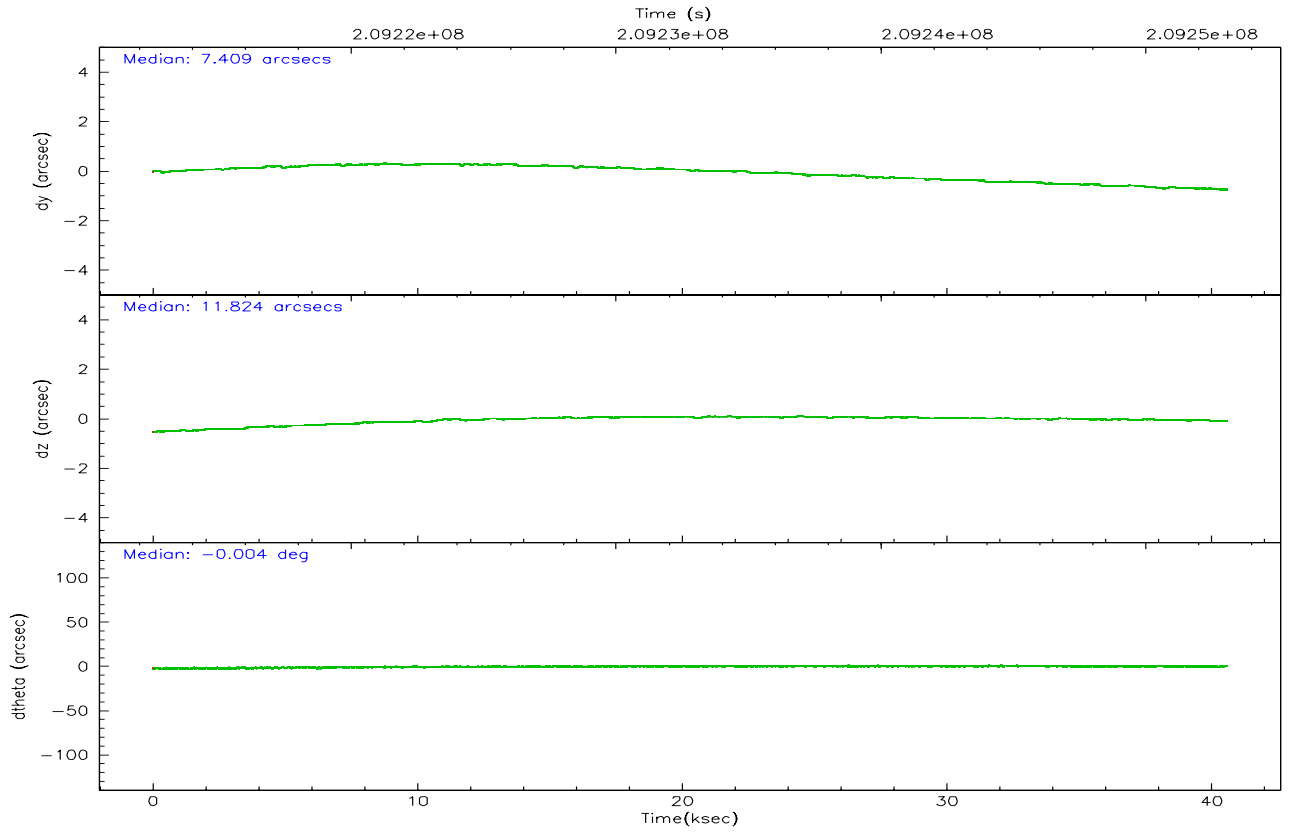
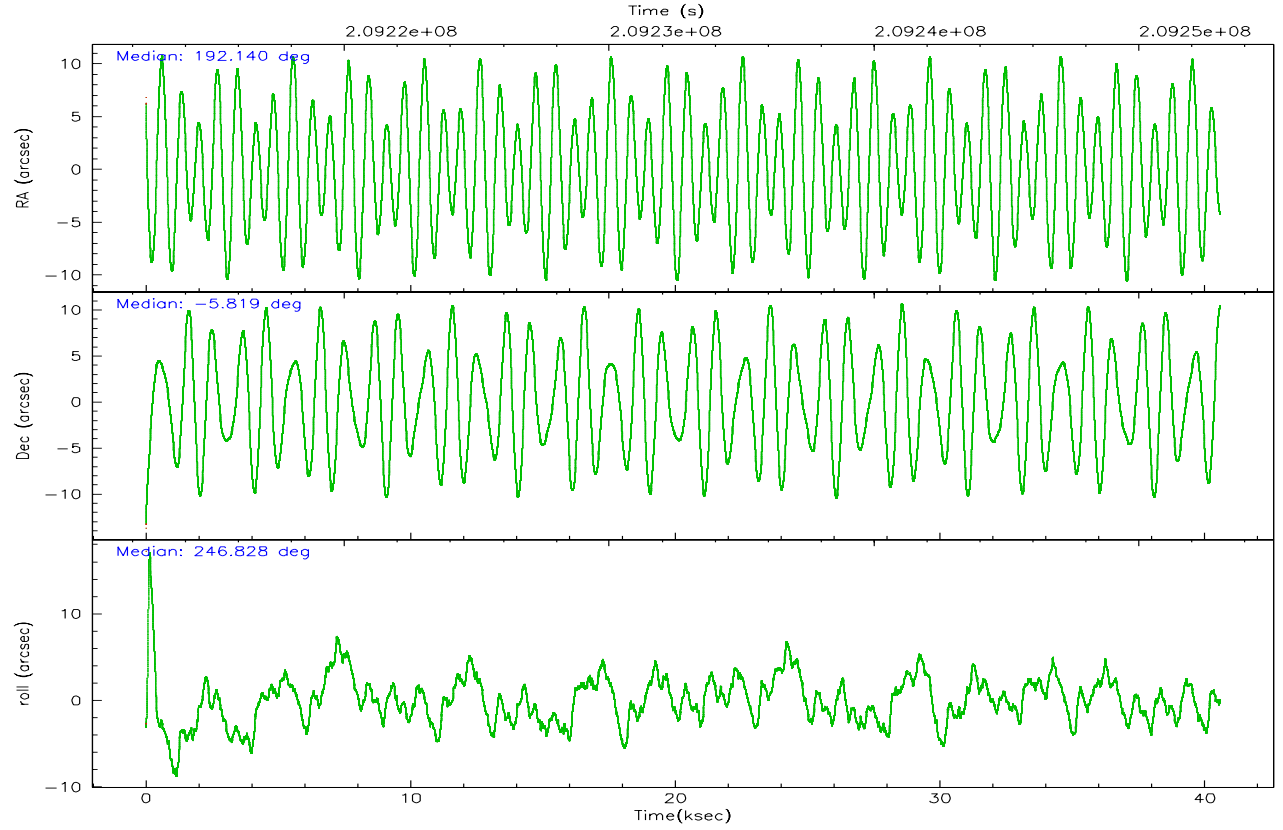
	ccd 3	ccd 5	ccd 6	ccd 7	ccd 8
grade 0 events	10473	16270	11560	10611	24127
	4%	4%	4%	3%	7%
grade 1 events	164	358	114	165	221
	0%	0%	0%	0%	0%
grade 2 events	5776	51546	6518	32385	16562
	2%	14%	2%	11%	5%
grade 3 events	3088	4168	3334	7559	8273
	1%	1%	1%	2%	2%
grade 4 events	3049	3996	3205	7549	7782
	1%	1%	1%	2%	2%
grade 5 events	9602	18095	10126	21060	14056
	3%	5%	3%	7%	4%
grade 6 events	6151	92091	7619	70261	21336
	2%	26%	2%	24%	6%
grade 7 events	215262	159013	222114	141205	230607
	84%	46%	83%	48%	71%

2.2 Compared Parameters

Parameter	Planned	Actual	Parameter	Planned	Actual
Instrument	ACIS	ACIS	Obspar format version number	6	6
Detector	ACIS-35678	ACIS-35678	Obspar file type	PREDICTED	ACTUAL
Grating	NONE	NONE	Obspar update status	NONE	UPDATED
Data mode	VFAINT	VFAINT	On-chip summing requested	N	N
Observation mode	POINTING	POINTING	Subarray requested	NONE	NONE
Pointing RA	192.136186	192.139811214497	Alternating exposures requested	N	N
Pointing Dec	-5.791906	-5.818883409852223	Primary exposure time	0.000000	3.1
Pointing Roll	246.675309	246.8322935293424			
SIM focus pos (mm)	-0.684267	-0.6828225247311905			
SIM defocus (mm)	0	0.001444936568705701			
SIM translation stage pos (mm)	-190.132523	-190.1425803651734			
SIM translation stage offset (mm)	0	0.01005778216563158			
Observation start time	209212684.184000	209211452.68733			
Observation start date	2004-08-18T10:37:00	2004-08-18T10:17:32			
Observation end time	209253084.184000	209253752.38921			
Observation end date	2004-08-18T21:50:20	2004-08-18T22:02:32			
Read mode	TIMED	TIMED			

2.3 Aspect



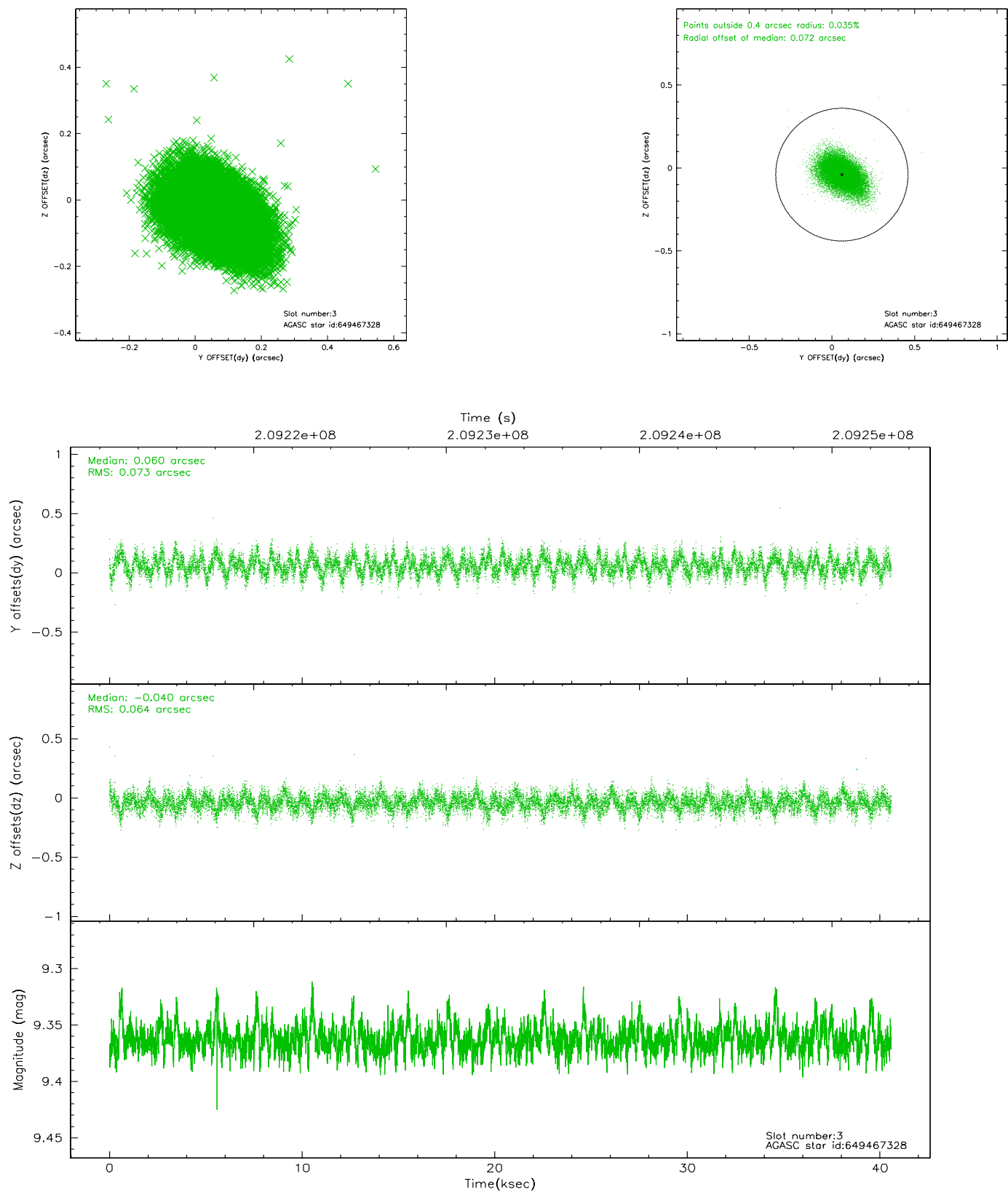


Slot Statistics

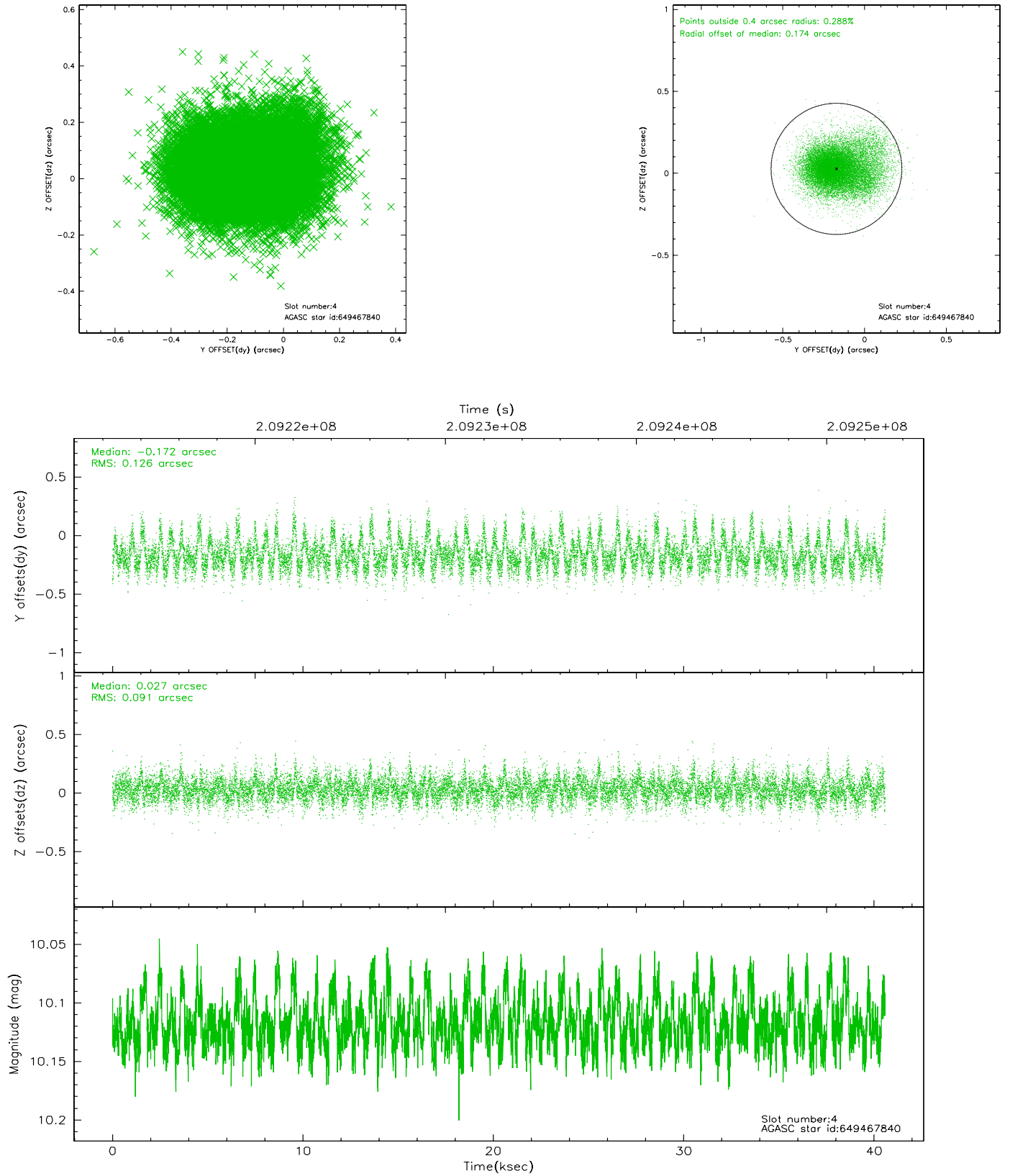
slot	status	id	mag	n_pts	med_dy	med_dz	dr1	dr2	ra	dec	mean_y	mean_z
0	FID	ACIS-S-1	7.19	9898	0.018	-0.058	0.010	0.016	0.000000	0.000000	935.94	-1728.71
1	FID	ACIS-S-4	7.20	9899	0.007	0.035	0.013	0.021	0.000000	0.000000	2153.36	175.51
2	FID	ACIS-S-5	7.23	9899	-0.053	0.035	0.013	0.025	0.000000	0.000000	-1812.96	169.17
3	GUIDE	649467328	9.36	19782	0.060	-0.040	0.102	0.171	192.312268	-5.822418	-148.54	622.60
4	GUIDE	649467840	10.12	19764	-0.172	0.027	0.161	0.283	191.989076	-5.066352	-2189.37	-1518.71
5	GUIDE	649469056	9.62	19746	-0.036	0.072	0.111	0.190	192.411237	-6.079132	560.15	1313.97
6	GUIDE	649471008	8.76	19784	0.100	-0.221	0.090	0.156	191.883055	-5.890695	686.15	-691.53
7	GUIDE	649472056	6.43	19796	0.048	0.159	0.070	0.110	191.889264	-6.301748	2036.01	-84.11

2.4 Star Slots

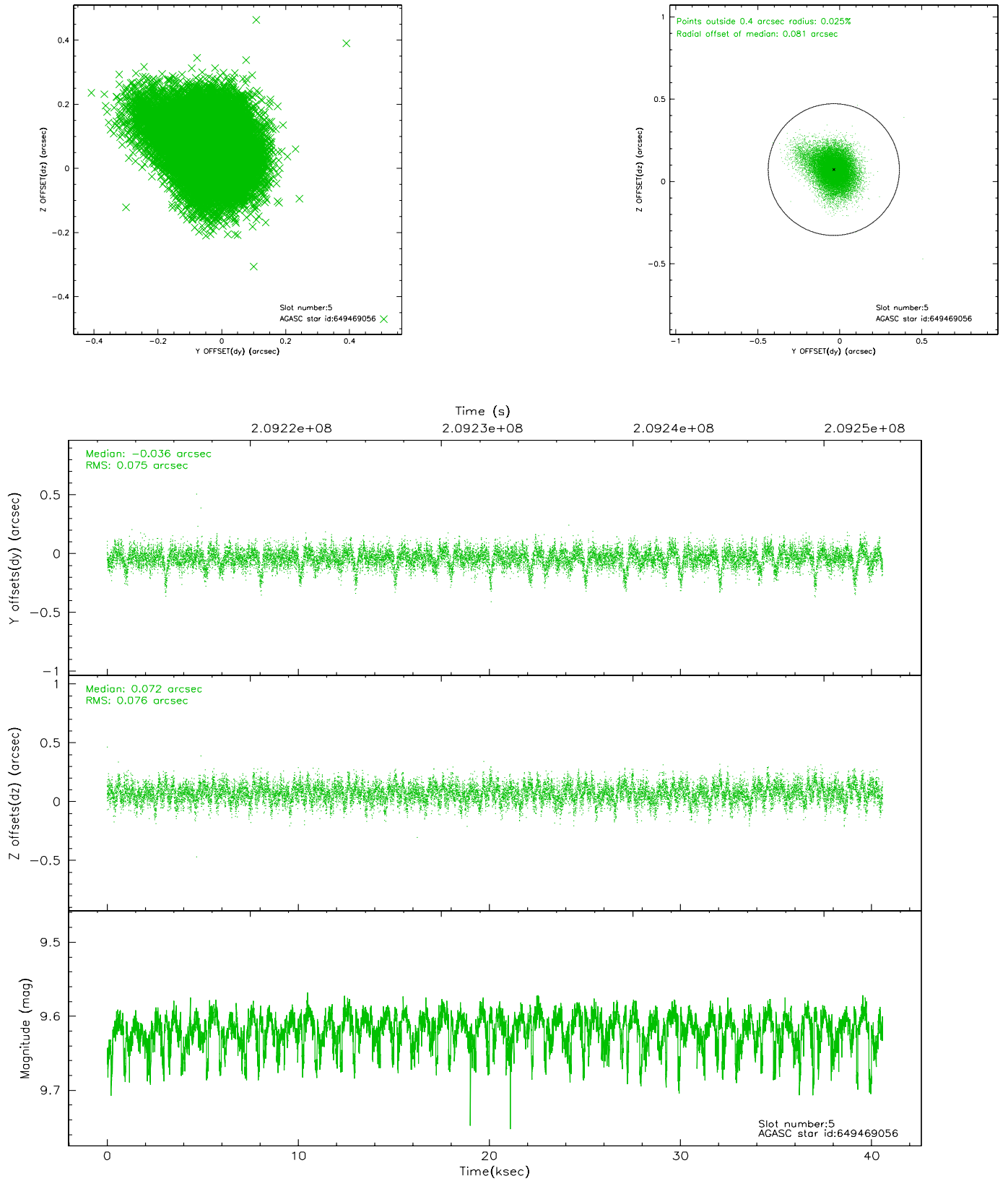
2.4.1 Slot 3



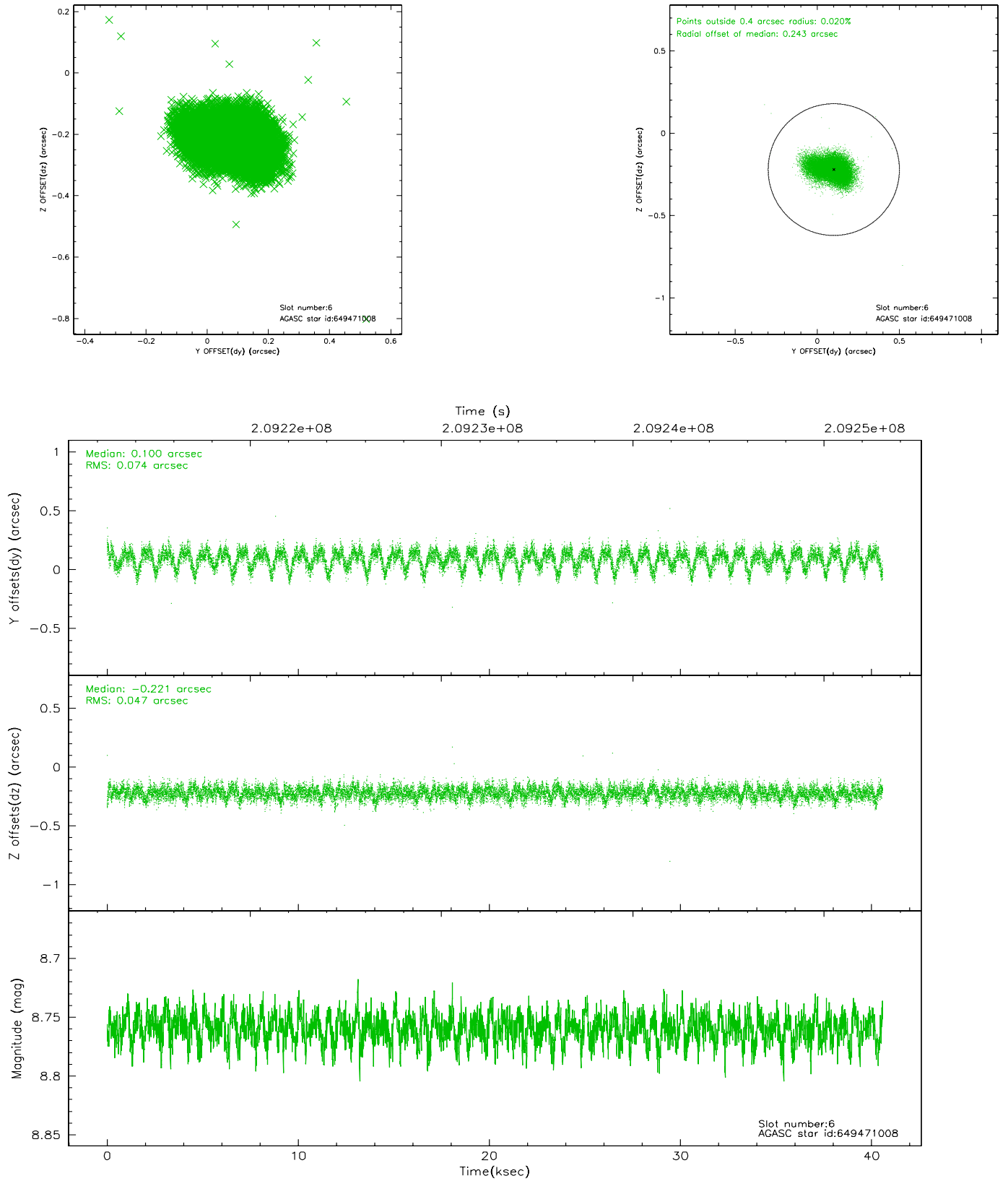
2.4.2 Slot 4



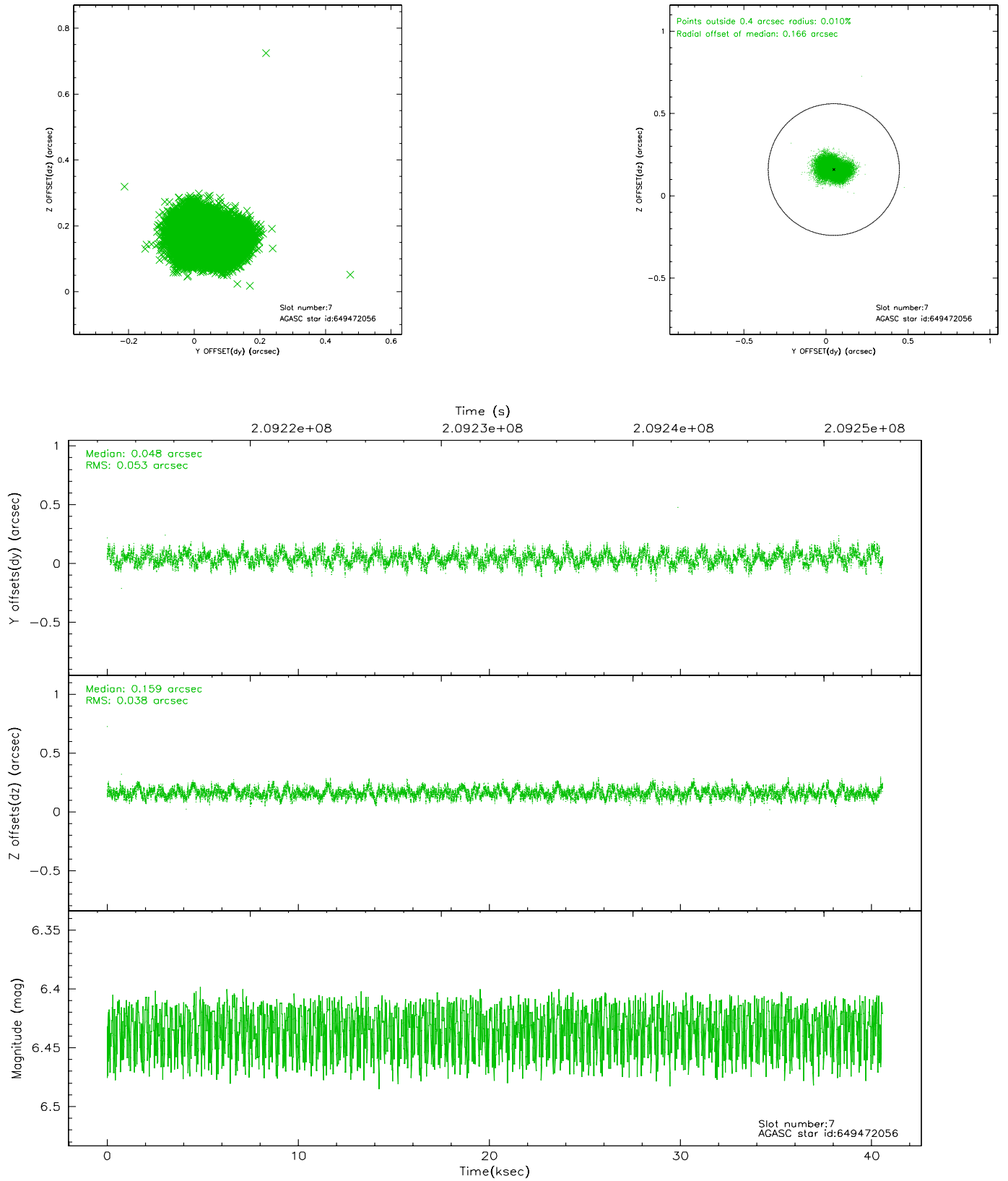
2.4.3 Slot 5



2.4.4 Slot 6

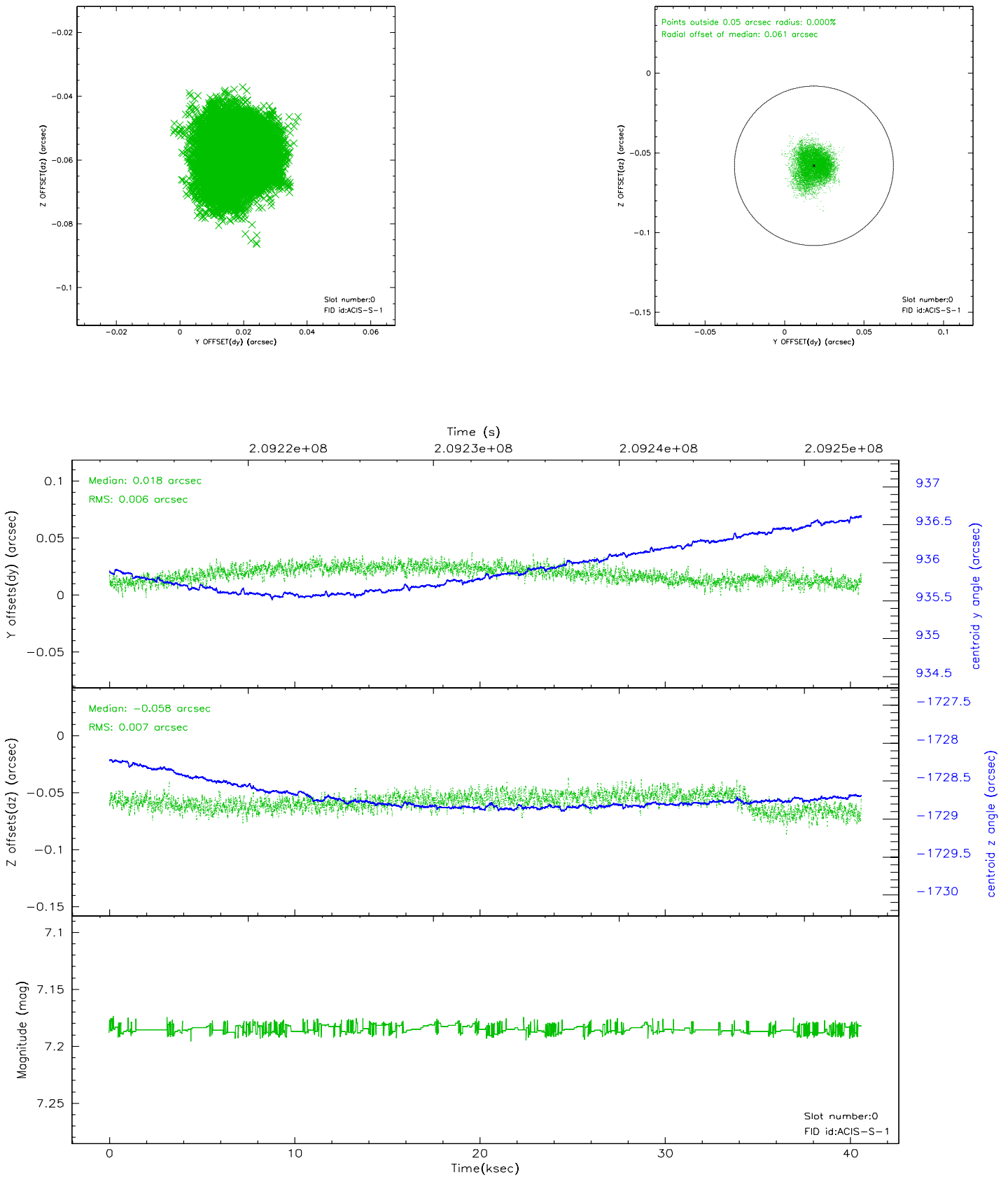


2.4.5 Slot 7

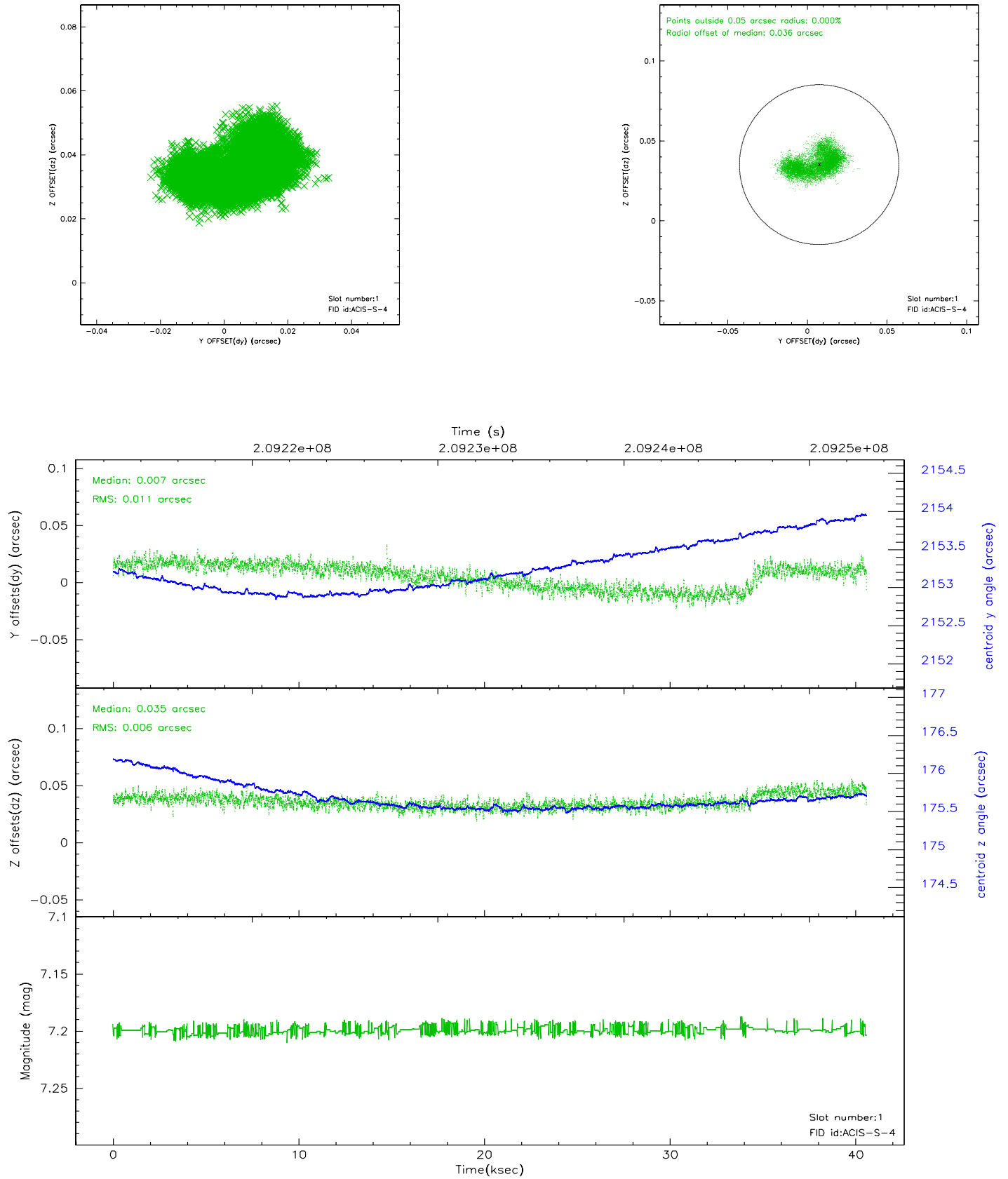


2.5 FID Slots

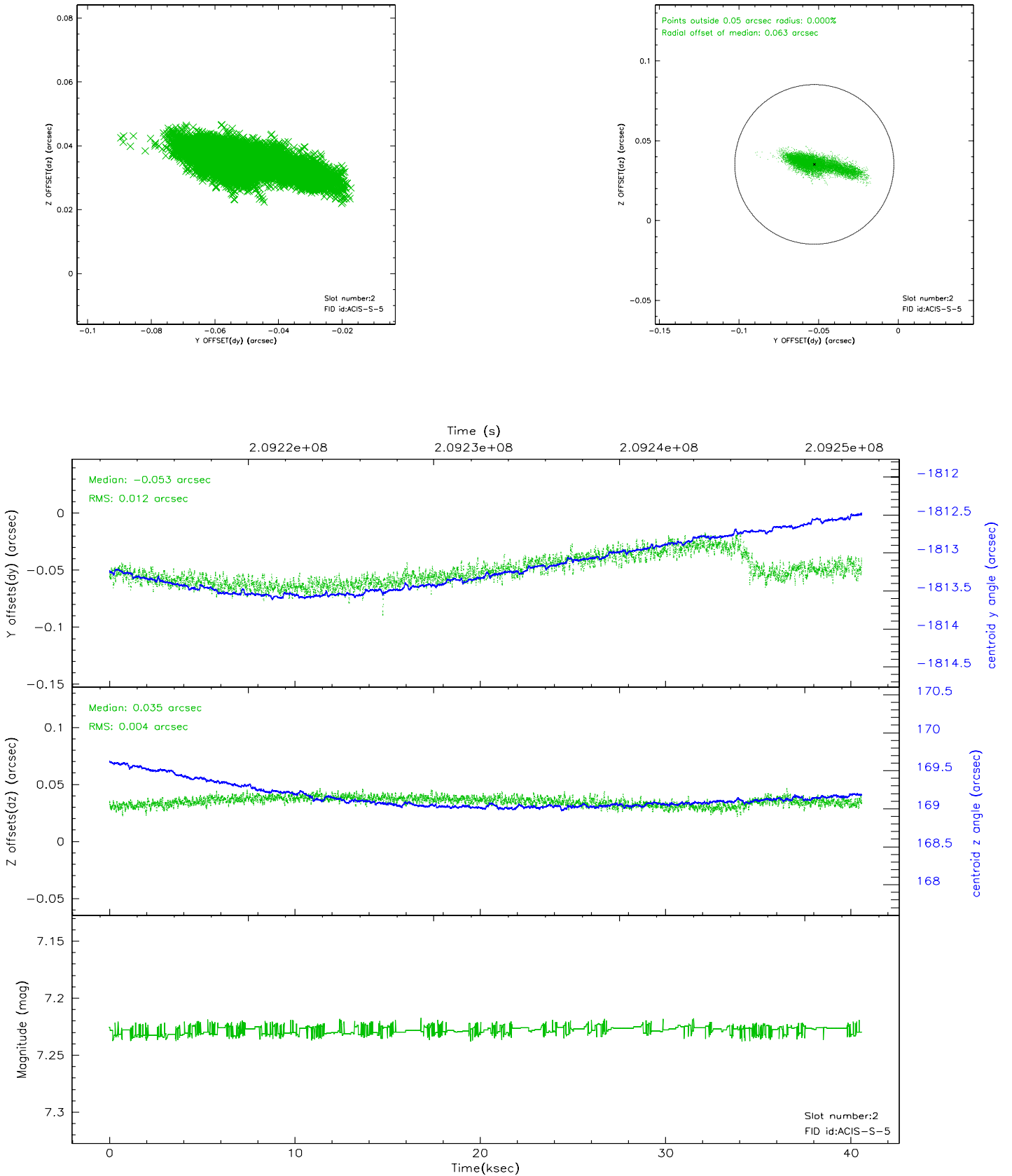
2.5.1 Slot 0



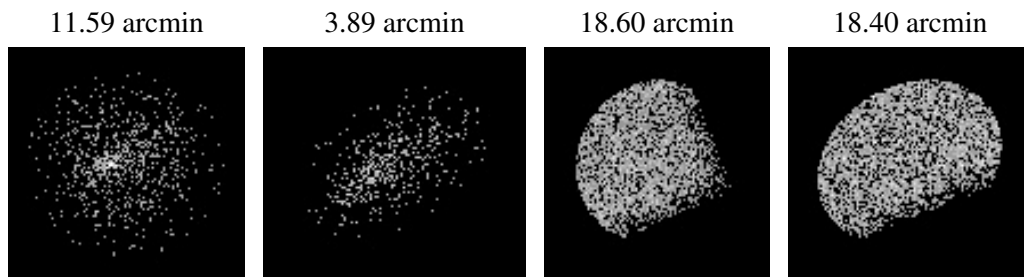
2.5.2 Slot 1



2.5.3 Slot 2



3 Point Sources



A Summary

A.1 Status

V&V Scientist	Jen Lauer
V&V Date (YYYY-MM-DD)	2006.04.25
V&V Edition	1
V&V Disposition and Status	OK
V&V Charge Time	40.575

A.2 Comments

Window preference not met.