

V&V Reference Report

L2 ASCDS Version : 8.5

Observation 4712 - L2 Version 3
Chandra X-Ray Center

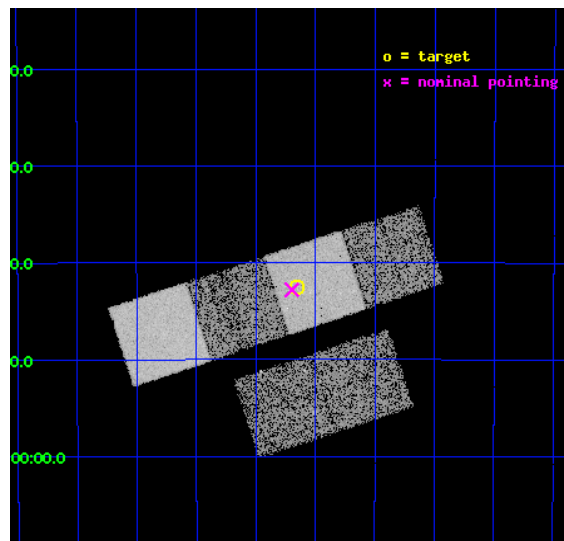
L2 Processing Date : Dec 10 2012

Contents

1	Front	2
2	OBI	3
2.1	OBI	3
2.1.1	Images	3
2.1.2	Bias	3
2.1.3	Parameters	4
2.1.4	Events	4
2.2	Compared Parameters	5
2.3	Aspect	6
2.4	Star Slots	9
2.4.1	Slot 3	9
2.4.2	Slot 4	10
2.4.3	Slot 5	11
2.4.4	Slot 6	12
2.4.5	Slot 7	13
2.5	FID Slots	14
2.5.1	Slot 0	14
2.5.2	Slot 1	15
2.5.3	Slot 2	16
A	Summary	17
A.1	Status	17
A.2	Comments	17

1 Front

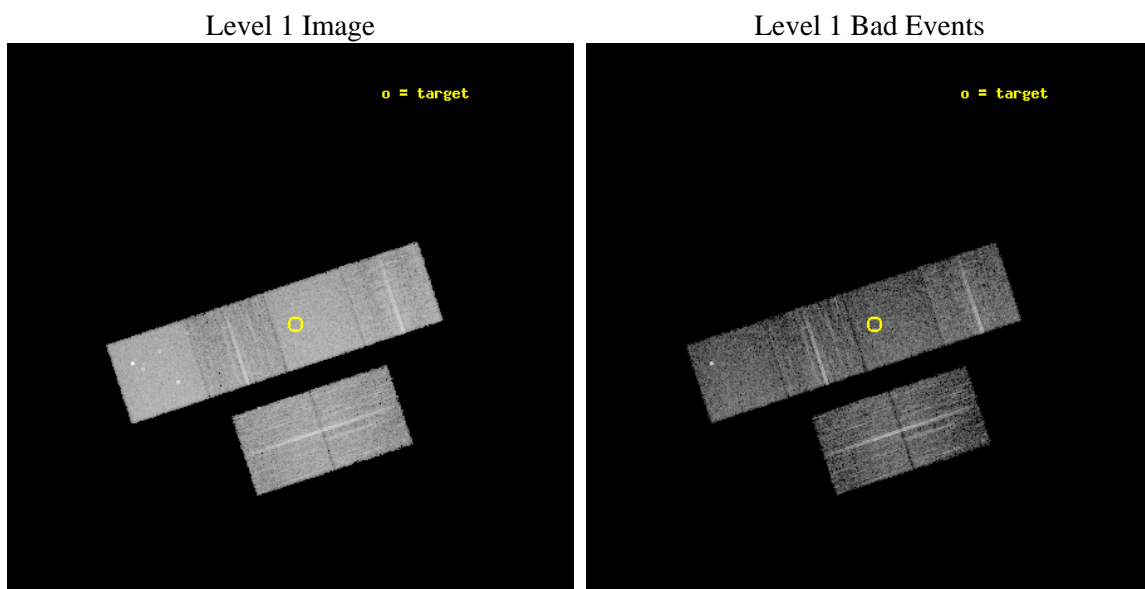
seq_num	600367	Sequence number
obs_id	4712	Observation id
title	Using the Sculptor Dwarf Spheroidal Galaxy to Constrain X-ray Binary Production in Population II	Proposal title
observer	Dr Thomas Maccarone	Principal investigator
object	SCULPTOR DWARF SPHEROIDAL	Source name
dtcycle	0	
cycle	P	events from which exps? Prim/Second/Both
ra_targ	15.039167	Observer's specified target RA [deg]
dec_targ	-33.708889	Observer's specified target Dec [deg]
ra_nom	15.049335862279	Nominal RA [deg]
dec_nom	-33.71344785353	Nominal Dec [deg]
roll_nom	341.75403125565	Nominal Roll [deg]
revision	3	Processing version of data
ontime	6159.9999770522	Sum of GTIs [s]
livetime	6081.9983482361	Livetime [s]
ontime2	6159.9999770522	Sum of GTIs [s]
ontime3	6159.9999770522	Sum of GTIs [s]
ontime5	6159.9999770522	Sum of GTIs [s]
ontime6	6159.9999770522	Sum of GTIs [s]
ontime7	6159.9999770522	Sum of GTIs [s]
ontime8	6159.9999770522	Sum of GTIs [s]
l2events	86819	Number of level 2 events



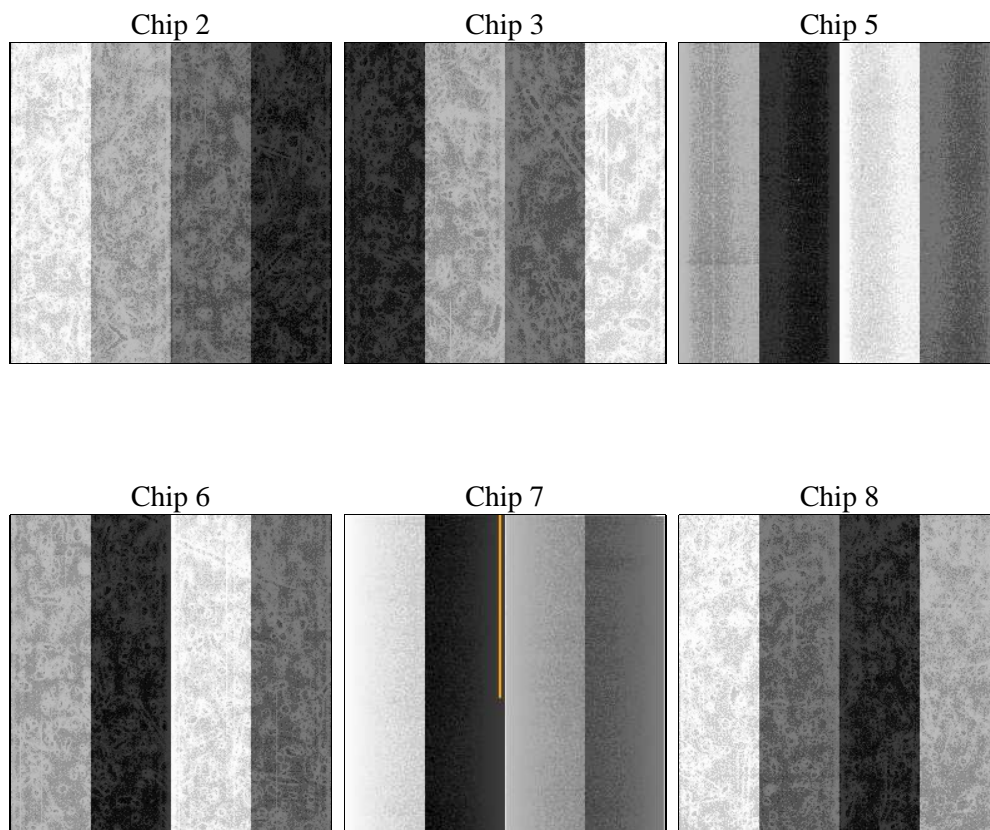
2 OBI

2.1 OBI

2.1.1 Images



2.1.2 Bias



2.1.3 Parameters

obi_num	0	Obi number	sched_exp_time	6005.725000	[s] Scheduled observation exposure time
ascdsver	8.5	Processing system revision	ontime	6159.9999770522	Sum of GTIs [s]
caldsver	4.5.4	 	ontime2	6159.9999770522	Sum of GTIs [s]
date	2012-12-10T11:31:36	Date and time of file creation	ontime3	6159.9999770522	Sum of GTIs [s]
revision	3	Processing version of data	ontime5	6159.9999770522	Sum of GTIs [s]
			ontime6	6159.9999770522	Sum of GTIs [s]
			ontime7	6159.9999770522	Sum of GTIs [s]
			ontime8	6159.9999770522	Sum of GTIs [s]
			l1events	368746	Number of level 1 events

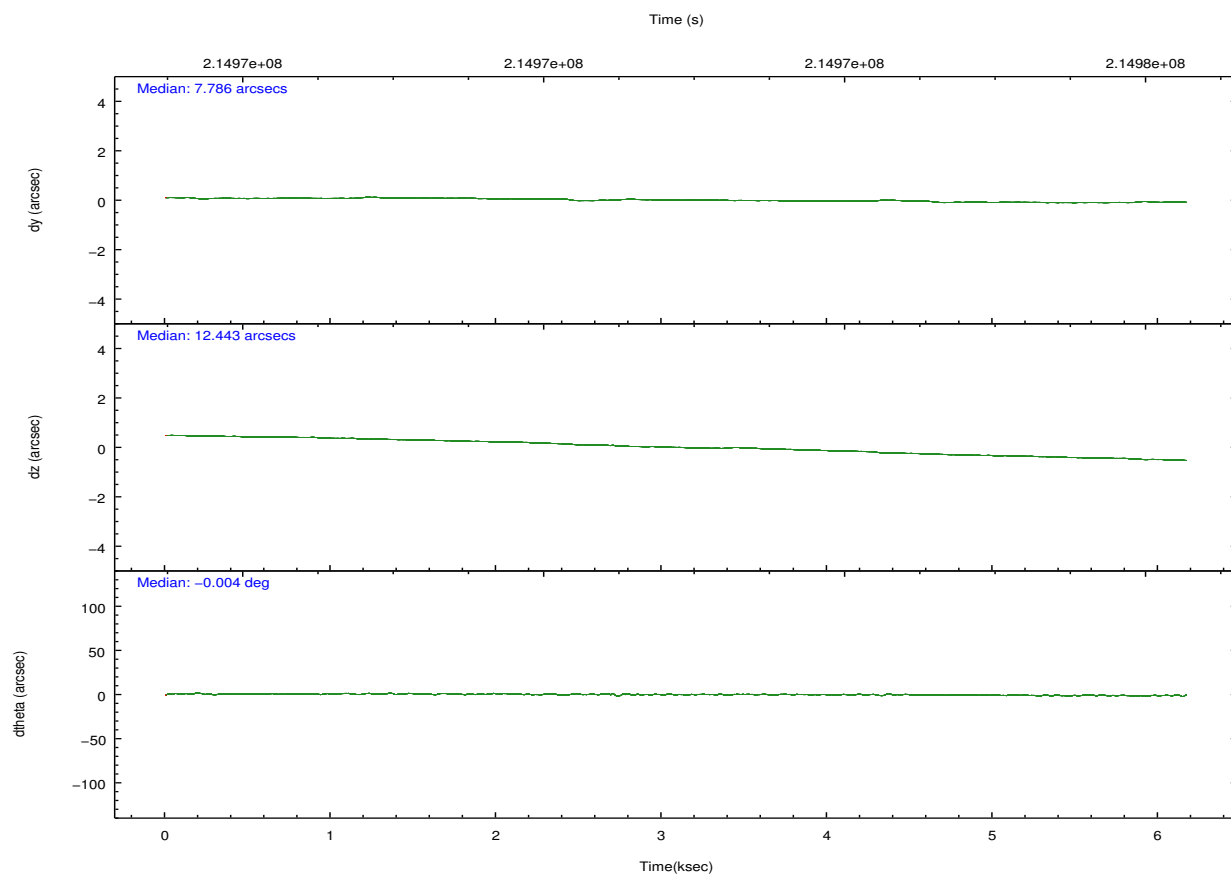
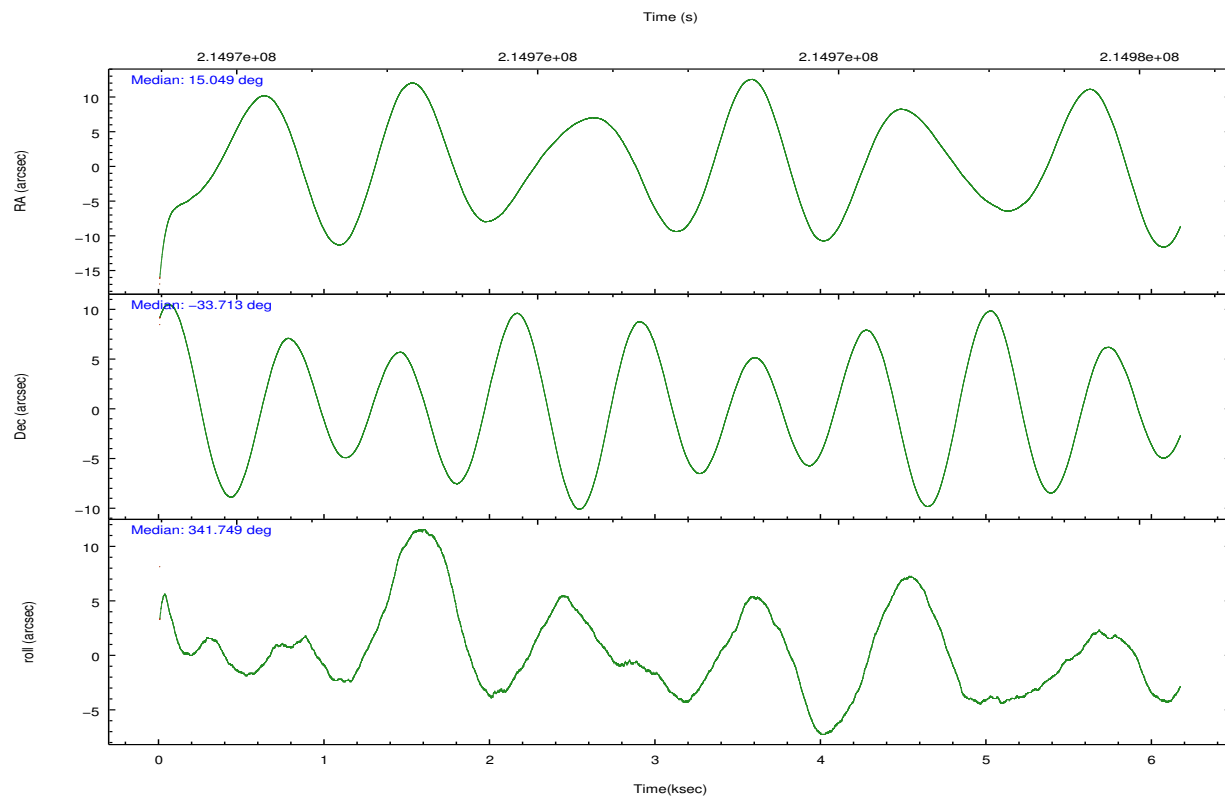
2.1.4 Events

	ccd 2	ccd 3	ccd 5	ccd 6	ccd 7	ccd 8		ccd 2	ccd 3	ccd 5	ccd 6	ccd 7	ccd 8
level 1 events	53632	48691	80093	51183	70662	64485	grade 0 events	3224	2849	4307	2935	2856	4847
rejected events	47100	42653	42988	44674	40370	50438		6%	5%	5%	5%	4%	7%
rejected %	87%	87%	53%	87%	57%	78%	grade 1 events	26	46	421	33	78	37
								0%	0%	0%	0%	0%	0%
							grade 2 events	1341	1155	11212	1317	6031	3141
								2%	2%	13%	2%	8%	4%
							grade 3 events	584	547	1571	577	2684	1414
								1%	1%	1%	1%	3%	2%
							grade 4 events	567	580	1510	583	2750	1366
								1%	1%	1%	1%	3%	2%
							grade 5 events	2021	2141	5879	2375	6523	3009
								3%	4%	7%	4%	9%	4%
							grade 6 events	990	1032	19429	1248	16776	3544
								1%	2%	24%	2%	23%	5%
							grade 7 events	44879	40341	35764	42115	32964	47127
								83%	82%	44%	82%	46%	73%

2.2 Compared Parameters

Parameter	Planned	Actual	Parameter	Planned	Actual
Instrument	ACIS	ACIS	Obspar format version number	7	7
Detector	ACIS-235678	ACIS-235678	Obspar file type	PREDICTED	ACTUAL
Grating	NONE	NONE	Obspar update status	NONE	UPDATED
Data mode	VFAINT	VFAINT	Number of optional ACIS chips dropped	0	0
Observation mode	POINTING	POINTING	On-chip summing requested	N	N
[deg] Pointing RA	15.017440	15.04933586227935	Subarray requested	NONE	NONE
[deg] Pointing Dec	-33.719385	-33.71344785353008	Alternating exposures requested	N	N
[deg] Pointing Roll	341.579681	341.7540312556515	[s] Primary exposure time	0.000000	3.2
[mm] SIM focus pos	-0.684267	-0.6828225247311905			
[mm] SIM defocus	0	0.001444936568705701			
[mm] SIM translation stage pos	-190.132523	-190.1400660498719			
[mm] SIM translation stage offset	0	0.00754346686406393			
[s] Observation start time (MET)	214969961.184000	214968825.15689			
Observation start date	2004-10-24T01:51:37	2004-10-24T01:33:45			
[s] Observation end time (MET)	214975967.184000	214976183.63222			
Observation end date	2004-10-24T03:31:43	2004-10-24T03:36:23			
Read mode	TIMED	TIMED			

2.3 Aspect

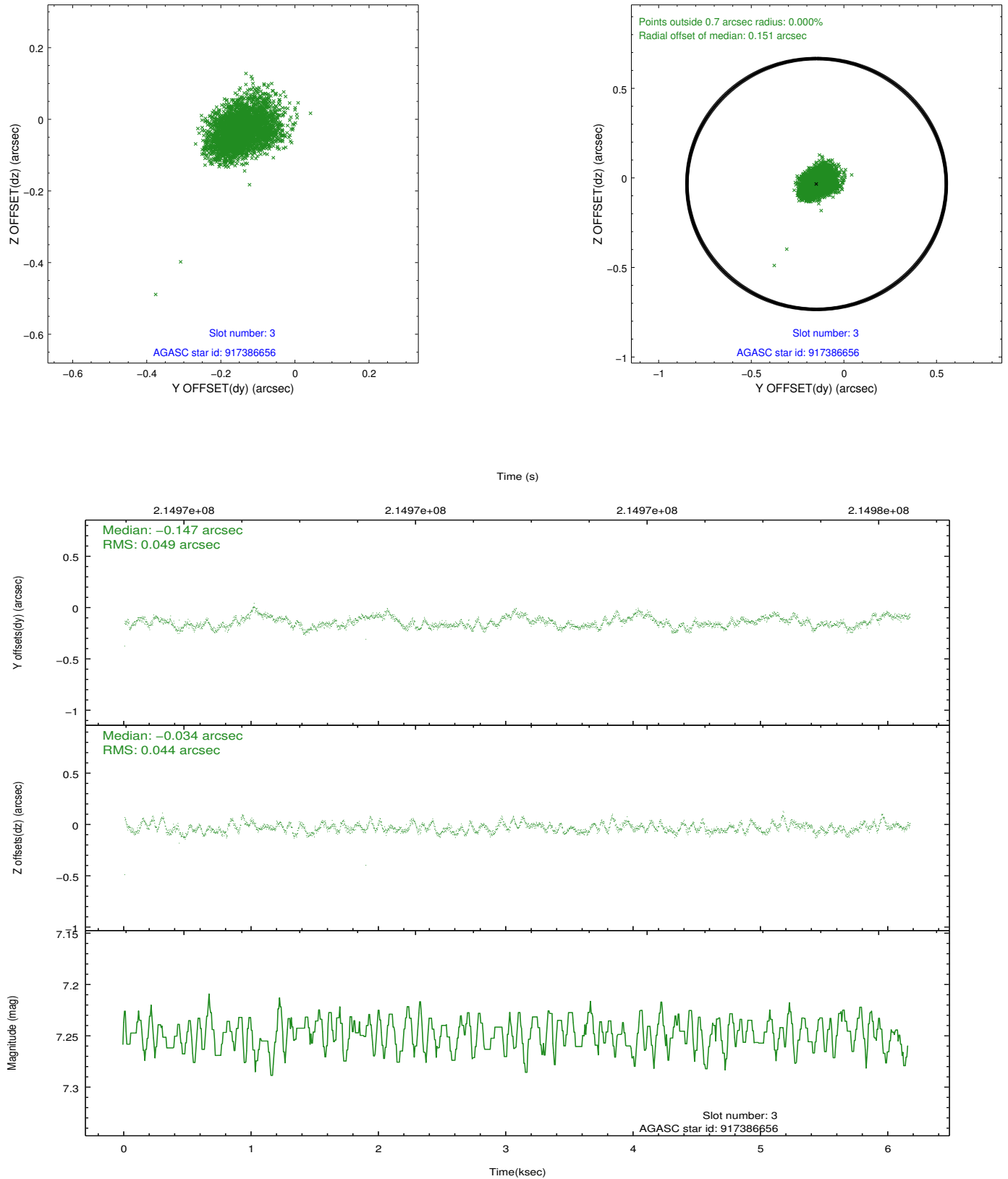


Slot Statistics

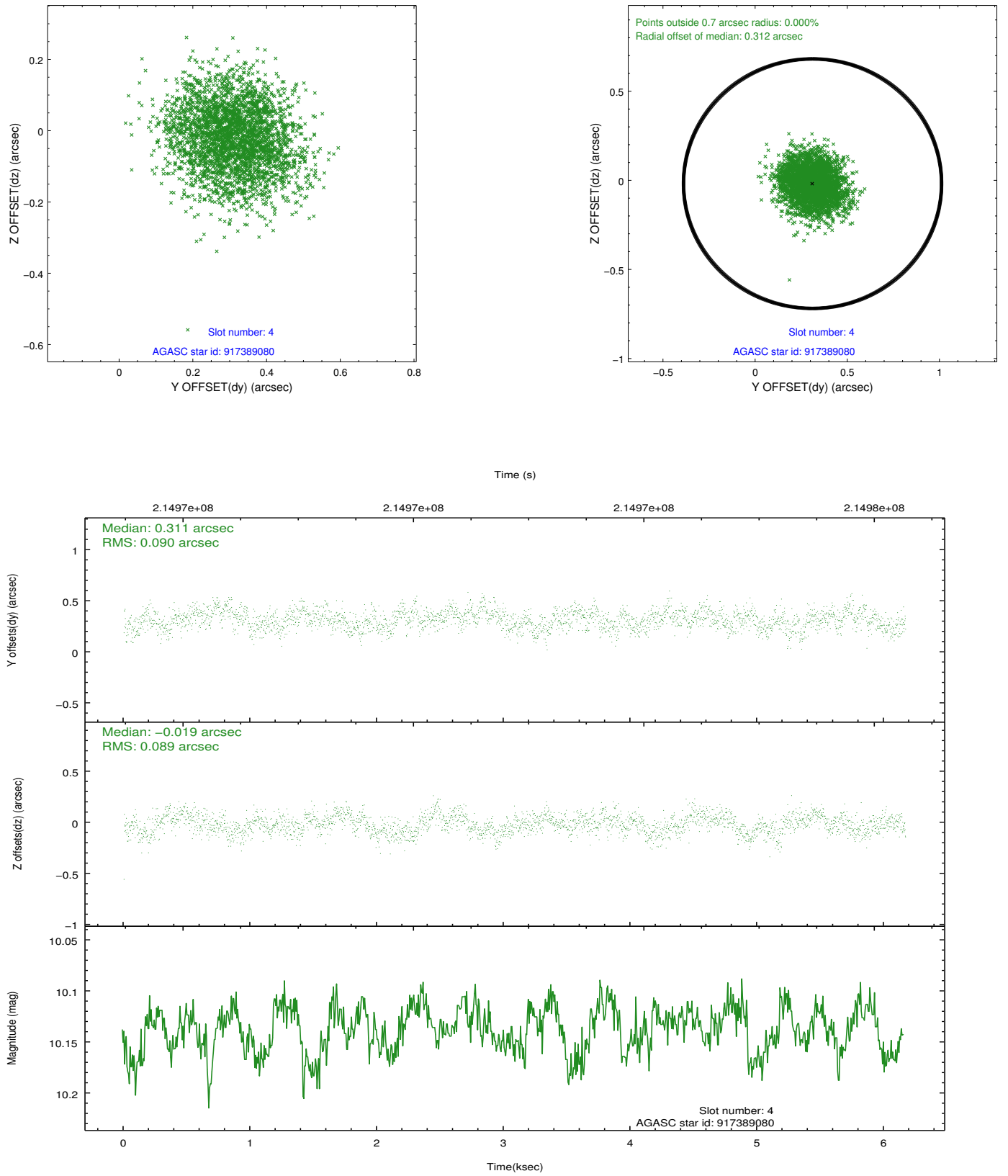
slot	status	id	mag	n_pts	med_dy	med_dz	dr1	dr2	ra	dec	mean_y	mean_z
0	FID	ACIS-S-2	7.10	1505	-0.010	-0.035	0.010	0.017	0.000000	0.000000	-760.58	-1733.80
1	FID	ACIS-S-4	7.20	1505	0.075	0.014	0.006	0.011	0.000000	0.000000	2152.35	173.74
2	FID	ACIS-S-5	7.23	1505	-0.096	0.030	0.012	0.019	0.000000	0.000000	-1812.27	168.52
3	GUIDE	917386656	7.25	3010	-0.147	-0.034	0.069	0.110	15.342124	-33.359890	517.90	1534.98
4	GUIDE	917389080	10.14	3008	0.311	-0.019	0.137	0.213	15.722484	-33.662555	1942.69	855.45
5	GUIDE	917389288	9.54	3008	-0.087	-0.005	0.165	0.253	15.394706	-33.185862	472.91	2179.68
6	GUIDE	917390768	9.88	3009	-0.033	0.064	0.121	0.196	14.870561	-33.104152	-1119.73	1961.80
7	GUIDE	917650528	8.71	3005	-0.056	-0.008	0.073	0.115	14.274554	-33.869842	-1933.11	-1222.72

2.4 Star Slots

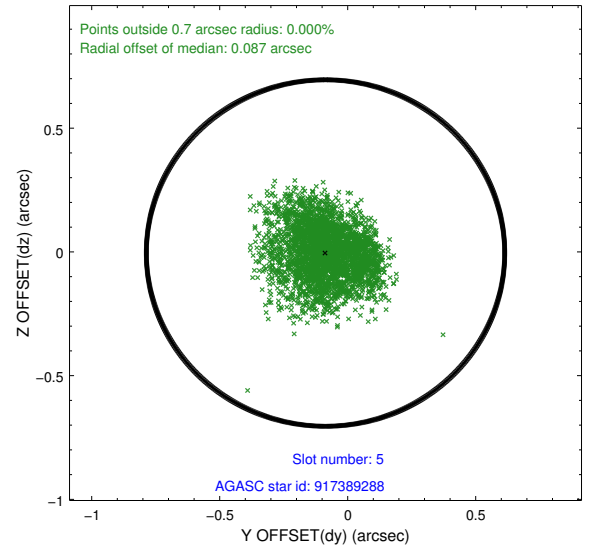
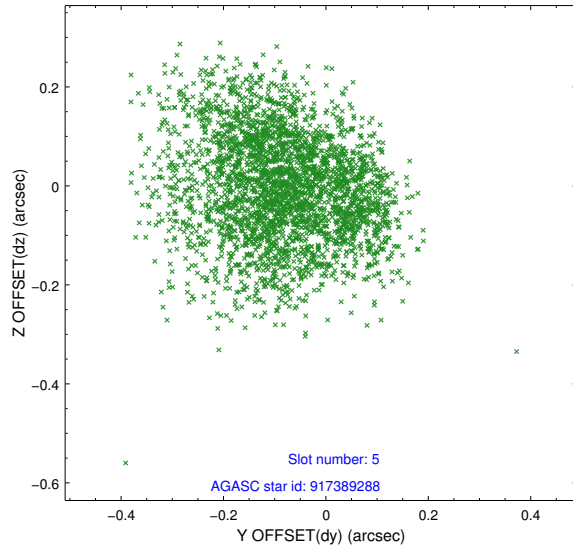
2.4.1 Slot 3



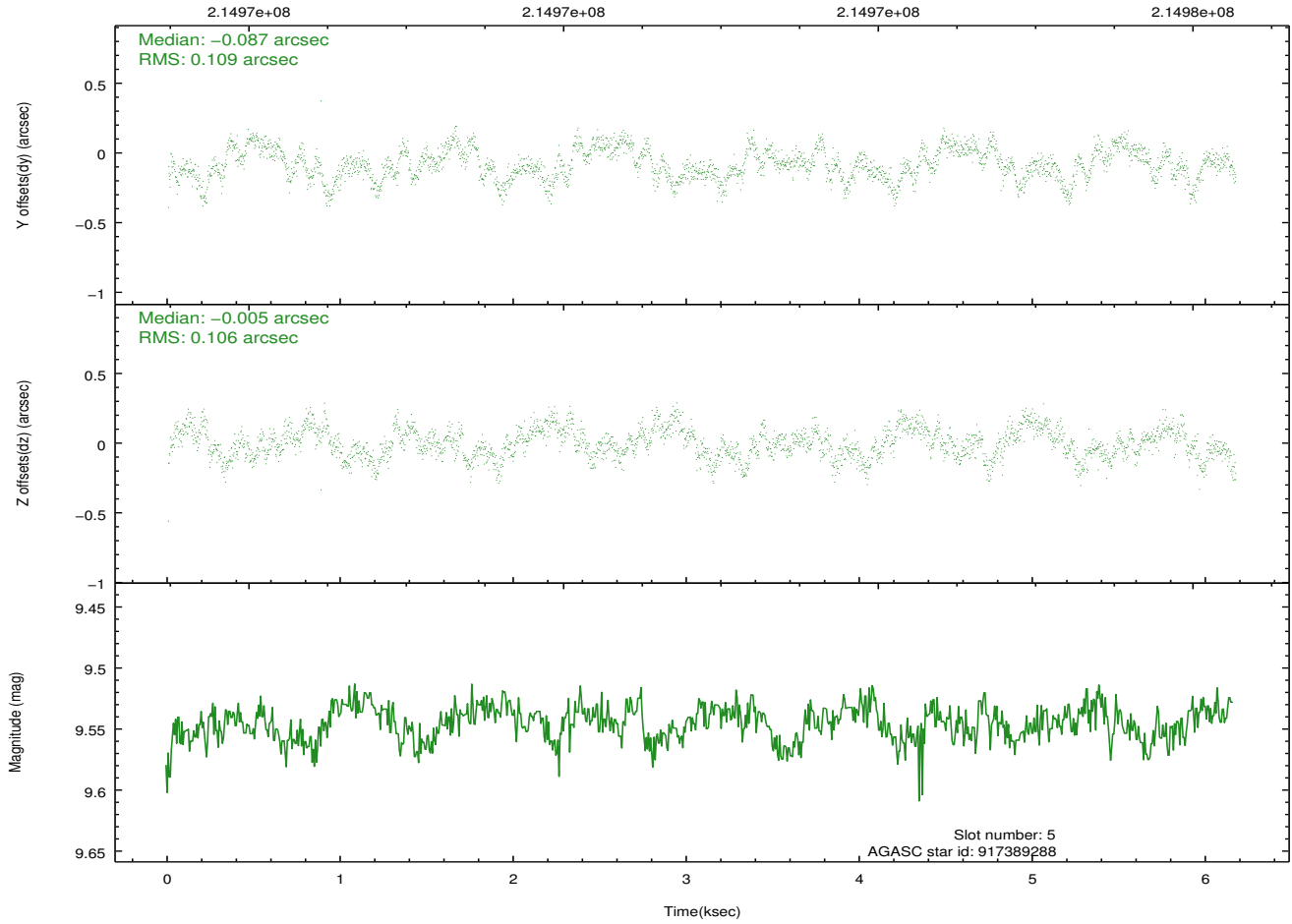
2.4.2 Slot 4



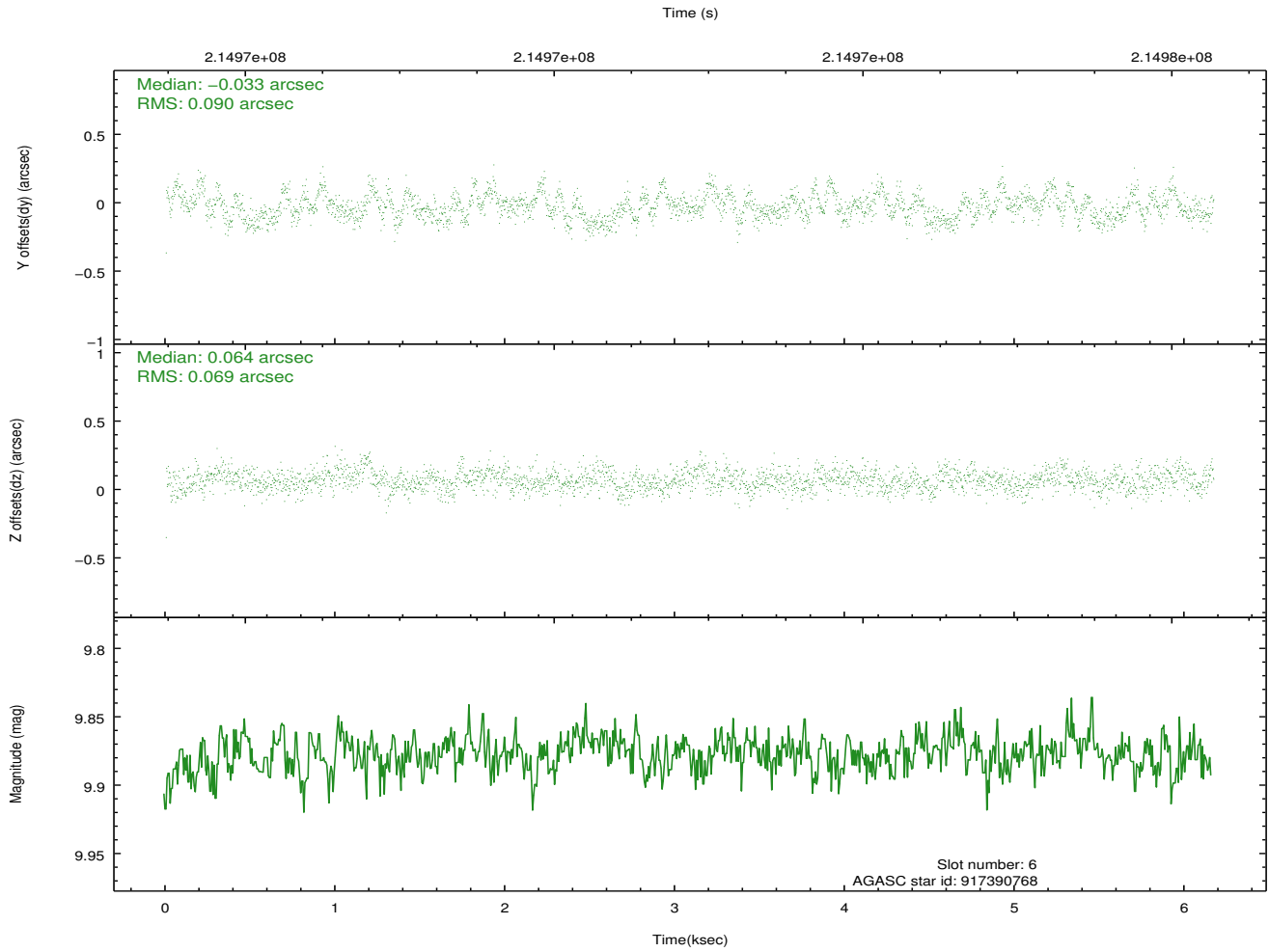
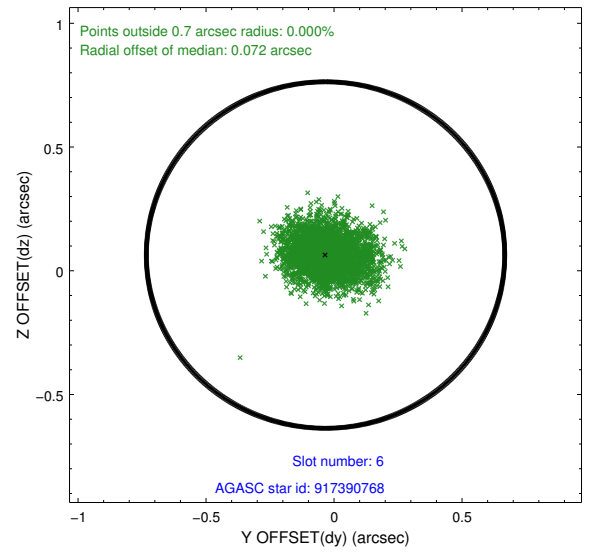
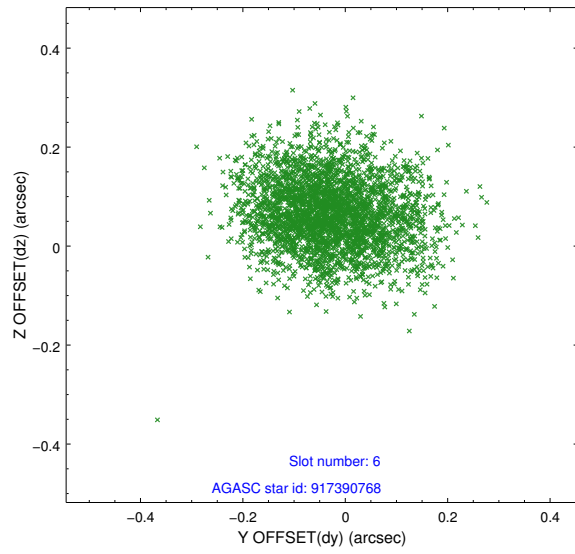
2.4.3 Slot 5



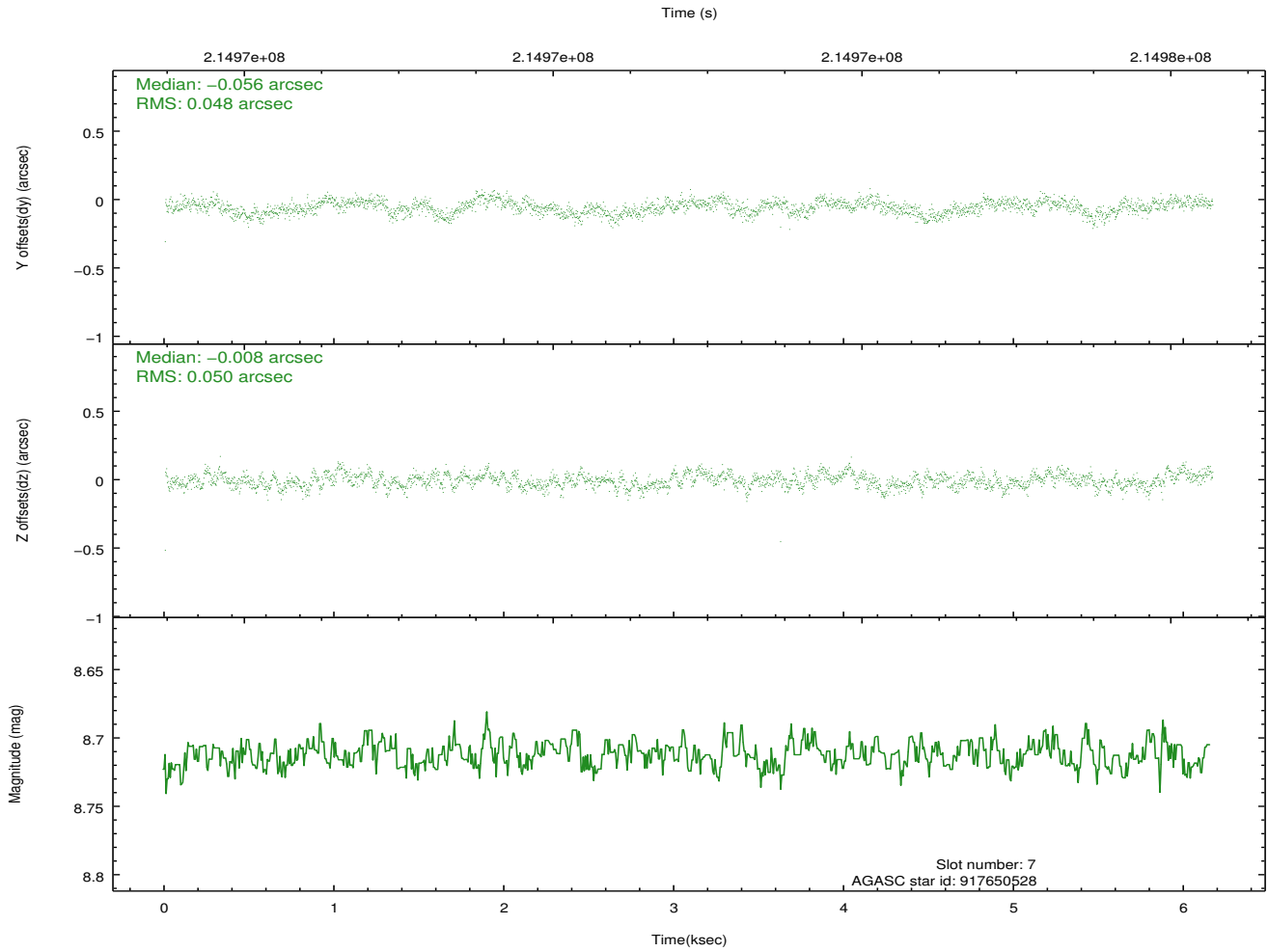
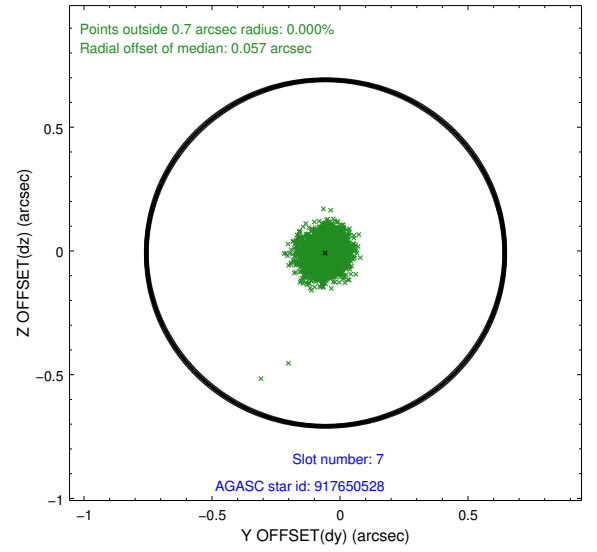
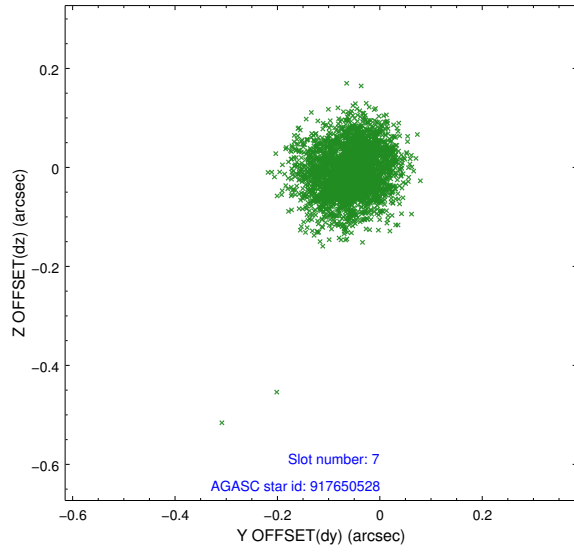
Time (s)



2.4.4 Slot 6

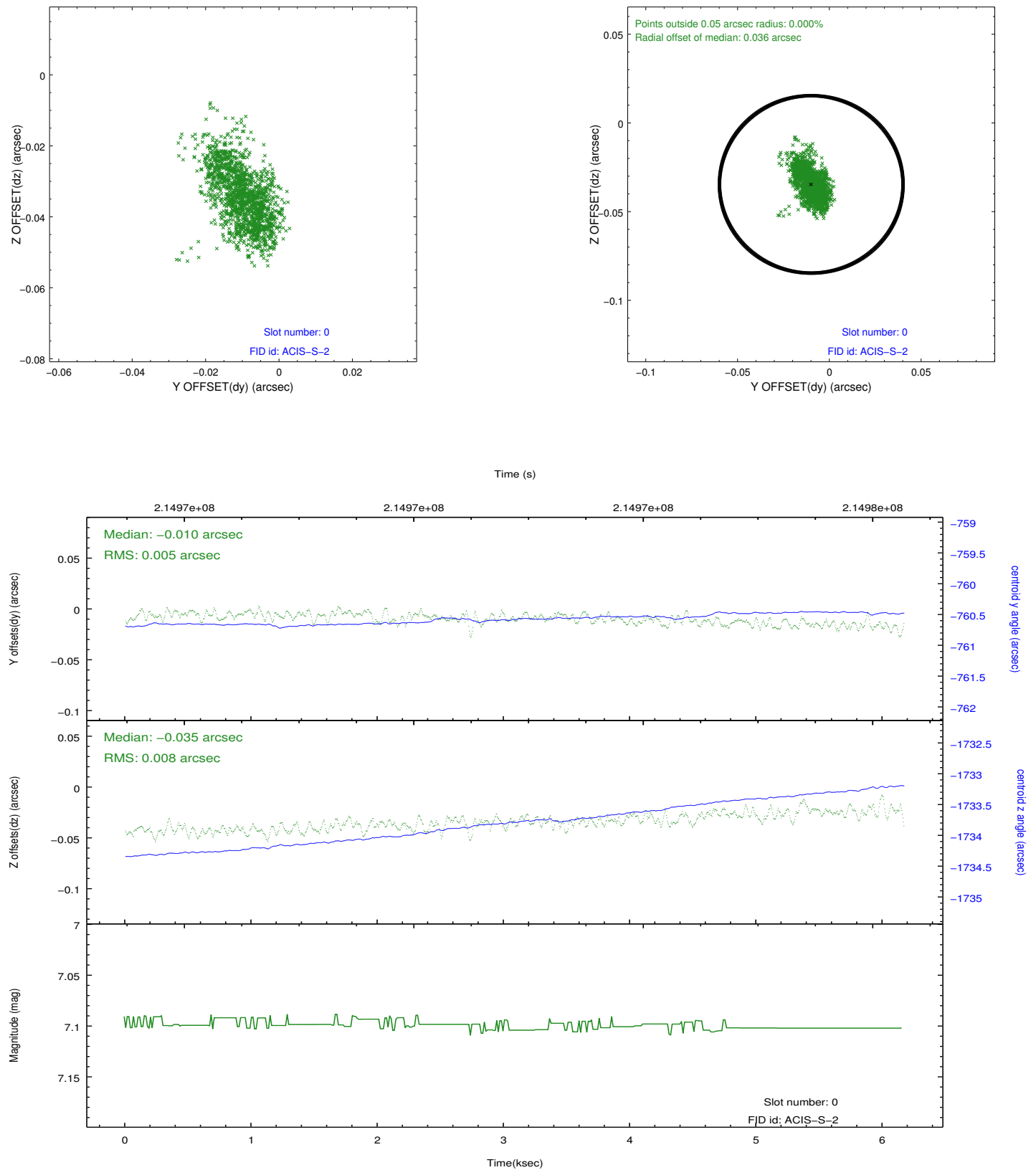


2.4.5 Slot 7

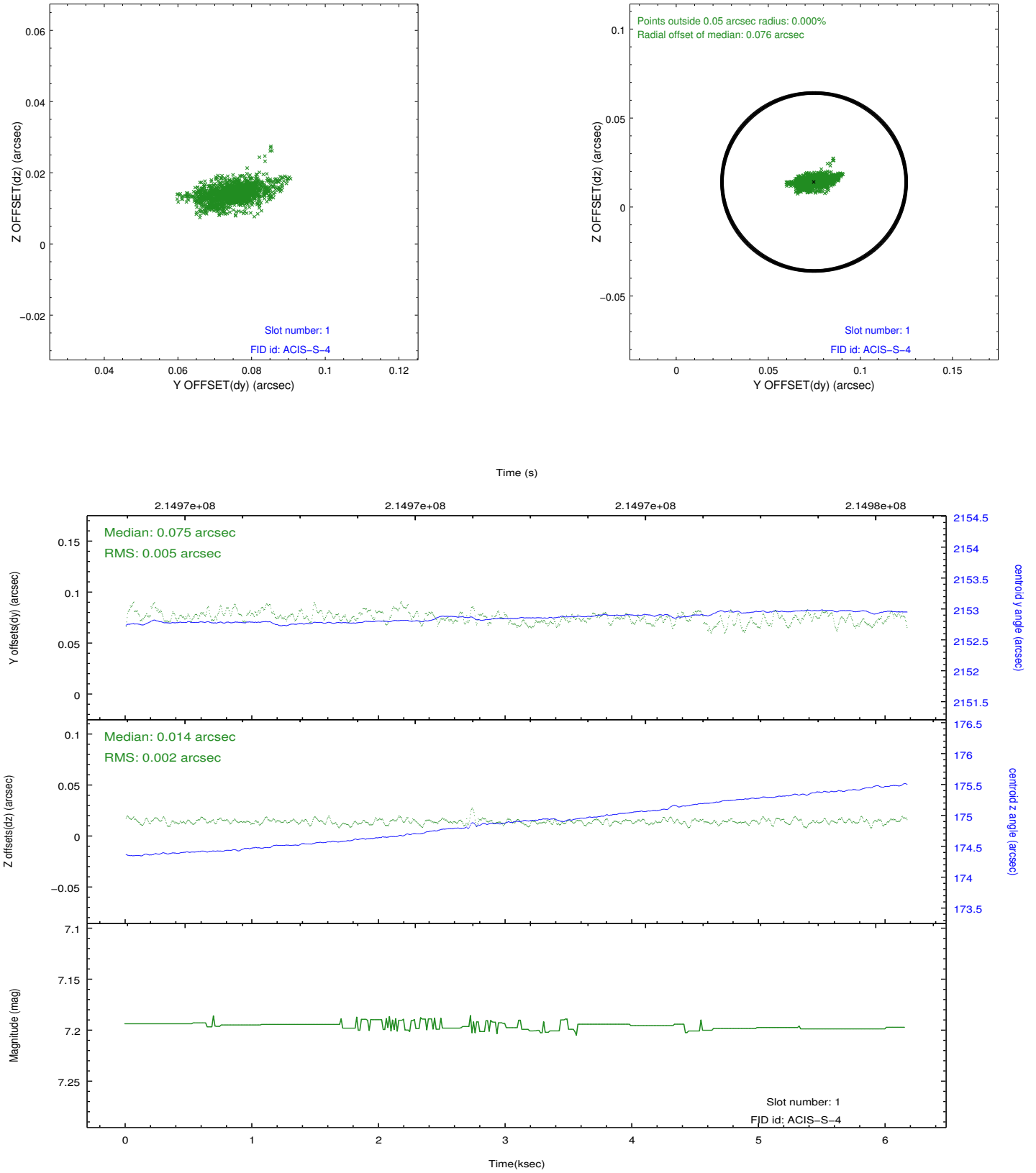


2.5 FID Slots

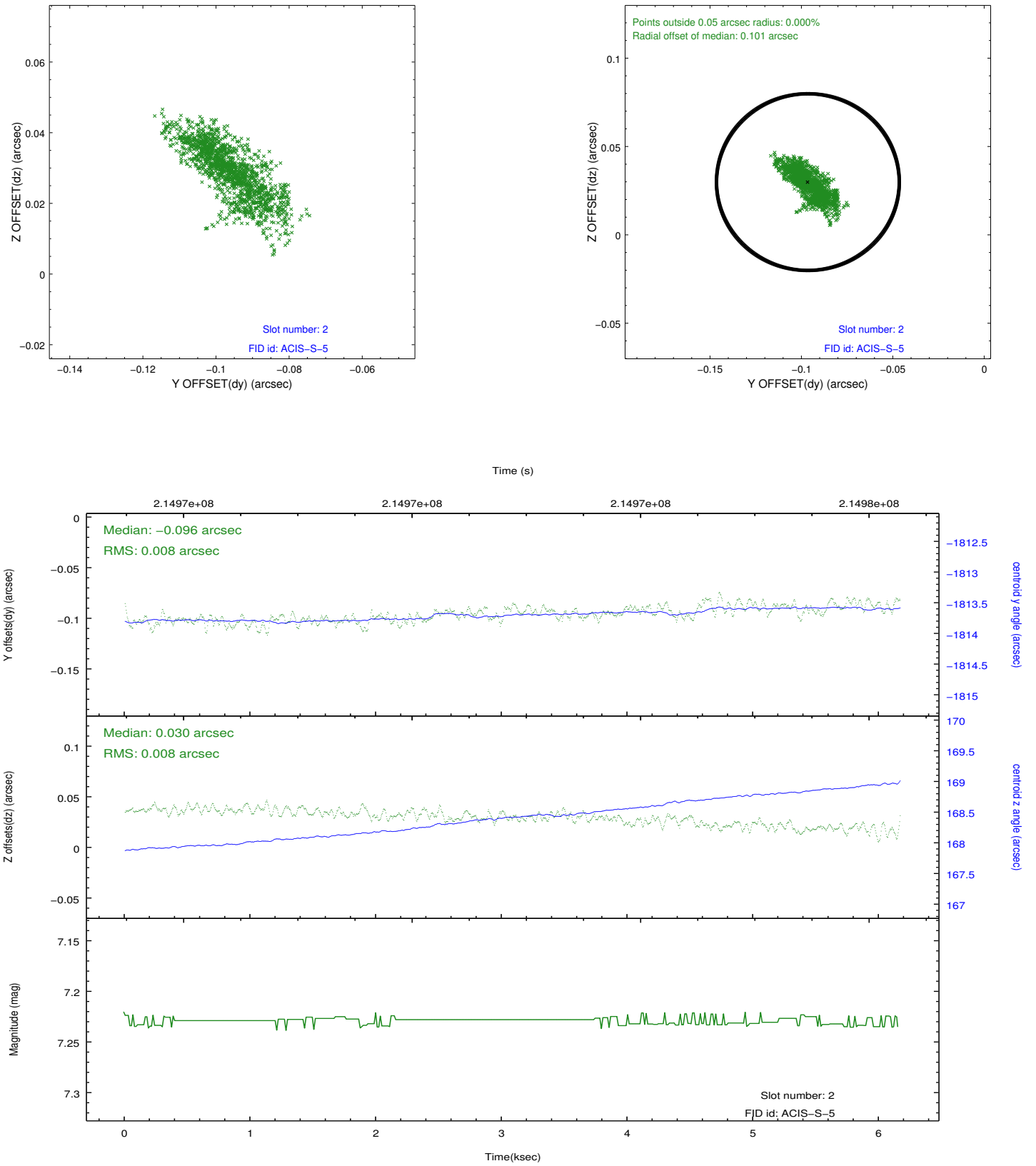
2.5.1 Slot 0



2.5.2 Slot 1



2.5.3 Slot 2



A Summary

A.1 Status

V&V Scientist	Jen Lauer
V&V Date (YYYY-MM-DD)	2013.01.03
V&V Edition	1
V&V Disposition and Status	OK
V&V Charge Time	6.159

A.2 Comments

Monitor constraint met. Joint Proposal: NOAO