

V&V Reference Report

L2 ASCDS Version : 8.5

Observation 4710 - L2 Version 3
Chandra X-Ray Center

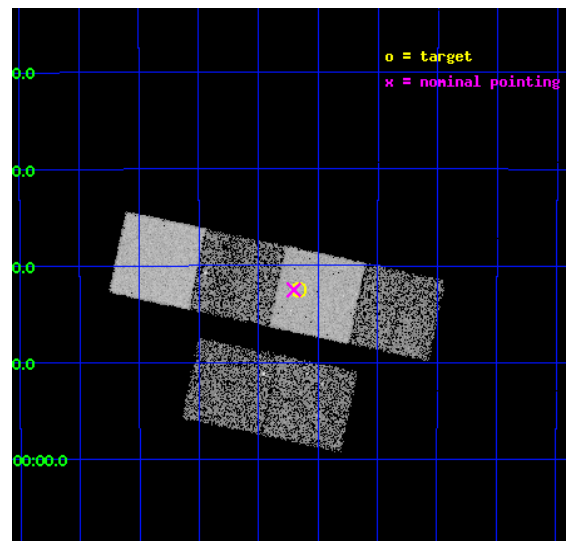
L2 Processing Date : Dec 9 2012

Contents

1	Front	2
2	OBI	3
2.1	OBI	3
2.1.1	Images	3
2.1.2	Bias	3
2.1.3	Parameters	4
2.1.4	Events	4
2.2	Compared Parameters	5
2.3	Aspect	6
2.4	Star Slots	9
2.4.1	Slot 3	9
2.4.2	Slot 4	10
2.4.3	Slot 5	11
2.4.4	Slot 6	12
2.4.5	Slot 7	13
2.5	FID Slots	14
2.5.1	Slot 0	14
2.5.2	Slot 1	15
2.5.3	Slot 2	16
A	Summary	17
A.1	Status	17
A.2	Comments	17

1 Front

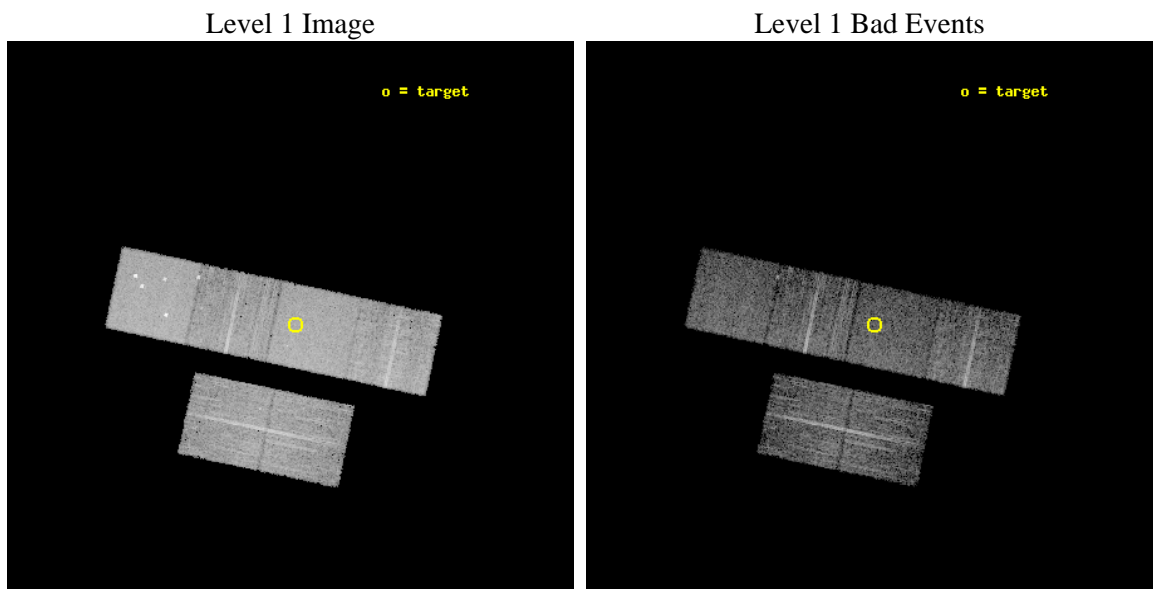
seq_num	600365	Sequence number
obs_id	4710	Observation id
title	Using the Sculptor Dwarf Spheroidal Galaxy to Constrain X-ray Binary Production in Population II	Proposal title
observer	Dr Thomas Maccarone	Principal investigator
object	SCULPTOR DWARF SPHEROIDAL	Source name
dtcycle	0	
cycle	P	events from which exps? Prim/Second/Both
ra_targ	15.039167	Observer's specified target RA [deg]
dec_targ	-33.708889	Observer's specified target Dec [deg]
ra_nom	15.050797519543	Nominal RA [deg]
dec_nom	-33.708511120124	Nominal Dec [deg]
roll_nom	11.951966304686	Nominal Roll [deg]
revision	3	Processing version of data
ontime	5958.3999778032	Sum of GTIs [s]
livetime	5882.9511295666	Livetime [s]
ontime2	5958.3999778032	Sum of GTIs [s]
ontime3	5958.2978642881	Sum of GTIs [s]
ontime5	5958.3799442947	Sum of GTIs [s]
ontime6	5955.0979040861	Sum of GTIs [s]
ontime7	5958.3999778032	Sum of GTIs [s]
ontime8	5958.2568243146	Sum of GTIs [s]
l2events	72465	Number of level 2 events



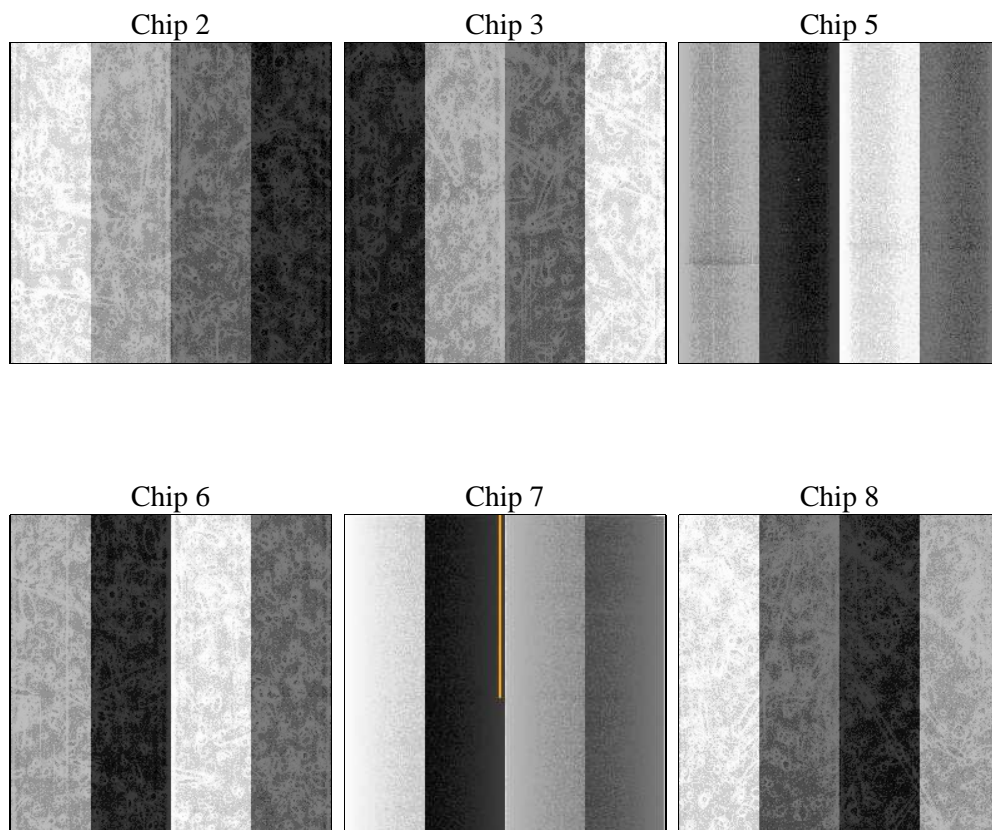
2 OBI

2.1 OBI

2.1.1 Images



2.1.2 Bias



2.1.3 Parameters

obi_num	0	Obi number	sched_exp_time	6000.000000	[s] Scheduled observation exposure time
ascdsver	8.5	Processing system revision	ontime	5958.3999778032	Sum of GTIs [s]
caldsver	4.5.4	 	ontime2	5958.3999778032	Sum of GTIs [s]
date	2012-12-09T17:21:38	Date and time of file creation	ontime3	5958.2978642881	Sum of GTIs [s]
revision	3	Processing version of data	ontime5	5958.3799442947	Sum of GTIs [s]
			ontime6	5955.0979040861	Sum of GTIs [s]
			ontime7	5958.3999778032	Sum of GTIs [s]
			ontime8	5958.2568243146	Sum of GTIs [s]
			l1events	325781	Number of level 1 events

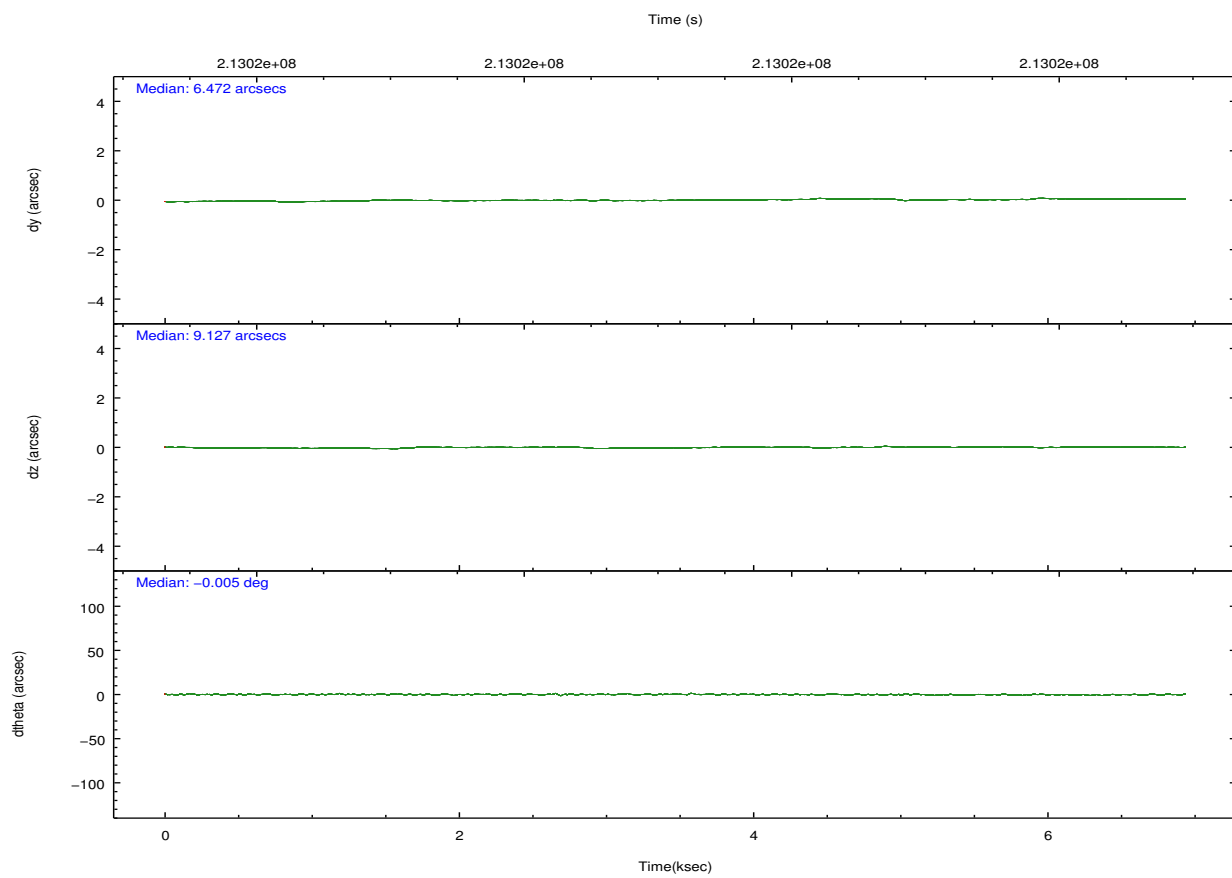
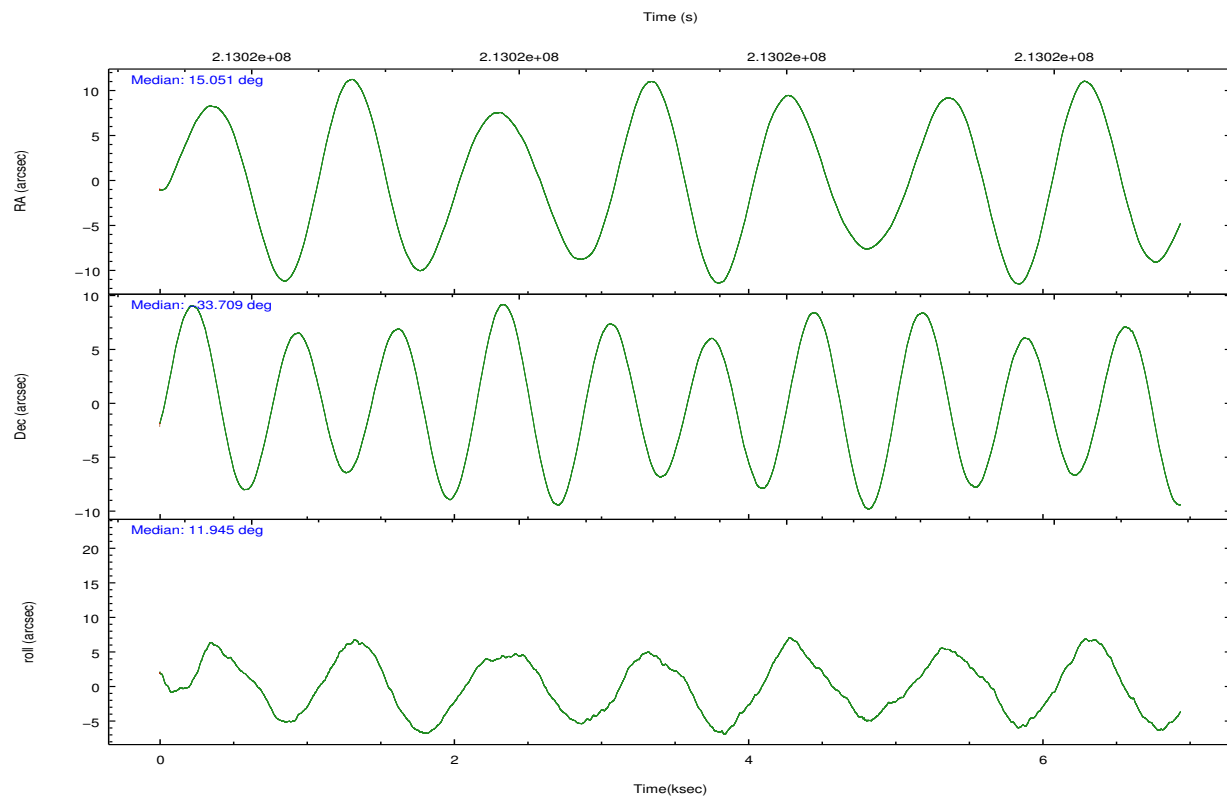
2.1.4 Events

	ccd 2	ccd 3	ccd 5	ccd 6	ccd 7	ccd 8		ccd 2	ccd 3	ccd 5	ccd 6	ccd 7	ccd 8
level 1 events	46184	44785	70344	46826	60901	56741	grade 0 events	2419	2397	5366	2213	2220	3667
rejected events	40750	39502	36746	41387	35609	45041		5%	5%	7%	4%	3%	6%
rejected %	88%	88%	52%	88%	58%	79%	grade 1 events	27	30	214	19	58	43
								0%	0%	0%	0%	0%	0%
							grade 2 events	1083	915	9710	1101	5125	2607
								2%	2%	13%	2%	8%	4%
							grade 3 events	494	516	1255	530	2233	1170
								1%	1%	1%	1%	3%	2%
							grade 4 events	545	529	1179	521	2323	1139
								1%	1%	1%	1%	3%	2%
							grade 5 events	1701	1984	5039	2167	5819	2669
								3%	4%	7%	4%	9%	4%
							grade 6 events	900	933	16129	1076	13428	3151
								1%	2%	22%	2%	22%	5%
							grade 7 events	39015	37481	31452	39199	29695	42295
								84%	83%	44%	83%	48%	74%

2.2 Compared Parameters

Parameter	Planned	Actual	Parameter	Planned	Actual
Instrument	ACIS	ACIS	Obspar format version number	7	7
Detector	ACIS-235678	ACIS-235678	Obspar file type	PREDICTED	ACTUAL
Grating	NONE	NONE	Obspar update status	NONE	UPDATED
Data mode	VFAINT	VFAINT	Number of optional ACIS chips dropped	0	0
Observation mode	POINTING	POINTING	On-chip summing requested	N	N
[deg] Pointing RA	15.026732	15.05079751954266	Subarray requested	NONE	NONE
[deg] Pointing Dec	-33.727053	-33.70851112012421	Alternating exposures requested	N	N
[deg] Pointing Roll	11.781969	11.95196630468579	[s] Primary exposure time	0.000000	3.2
[mm] SIM focus pos	-0.684267	-0.6828225247311905			
[mm] SIM defocus	0	0.001444936568705701			
[mm] SIM translation stage pos	-190.132523	-190.1400660498719			
[mm] SIM translation stage offset	0	0.00754346686406393			
[s] Observation start time (MET)	213016599.184000	213015116.64453			
Observation start date	2004-10-01T11:15:35	2004-10-01T10:51:56			
[s] Observation end time (MET)	213022599.184000	213024213.00744			
Observation end date	2004-10-01T12:55:35	2004-10-01T13:23:33			
Read mode	TIMED	TIMED			

2.3 Aspect

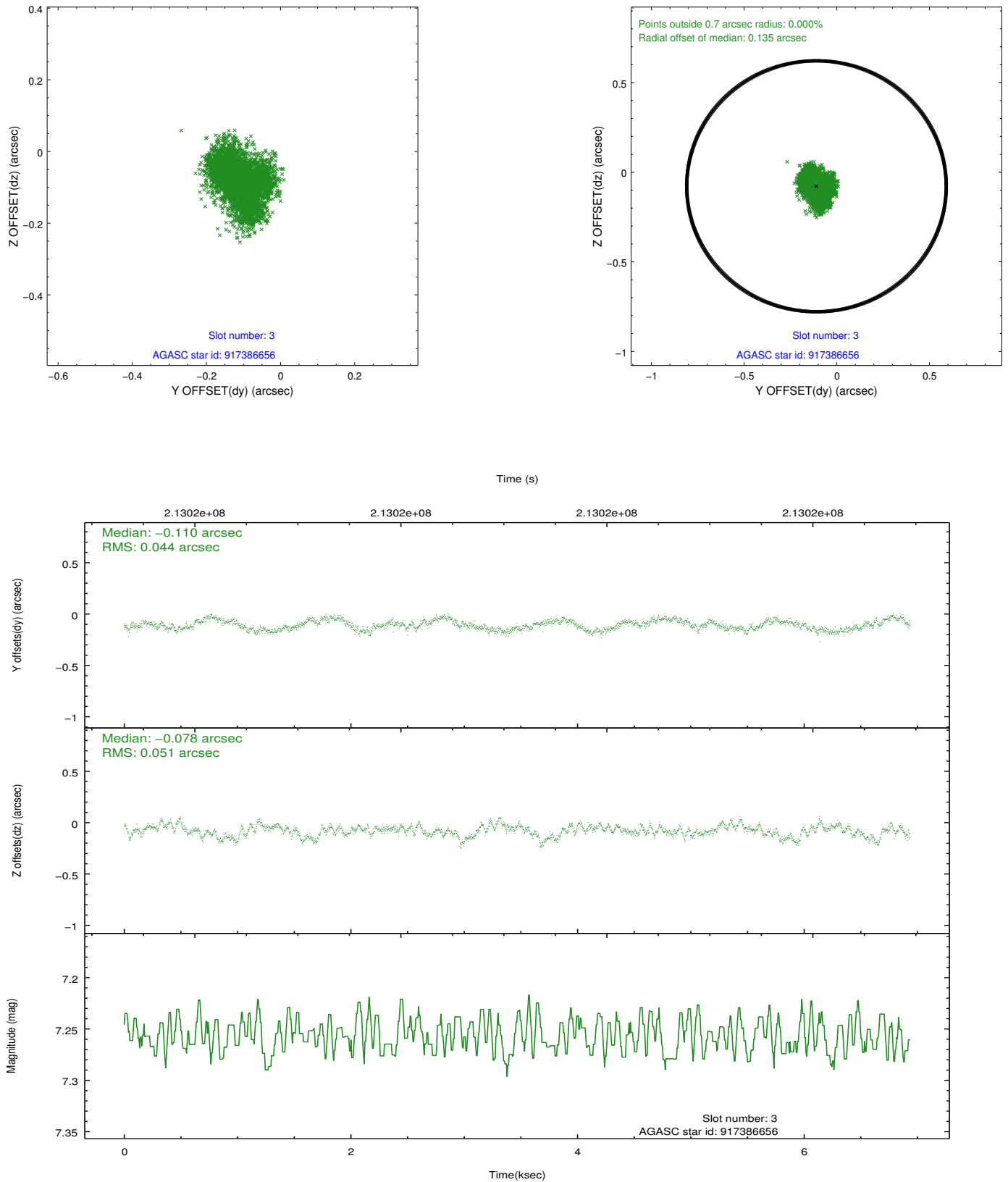


Slot Statistics

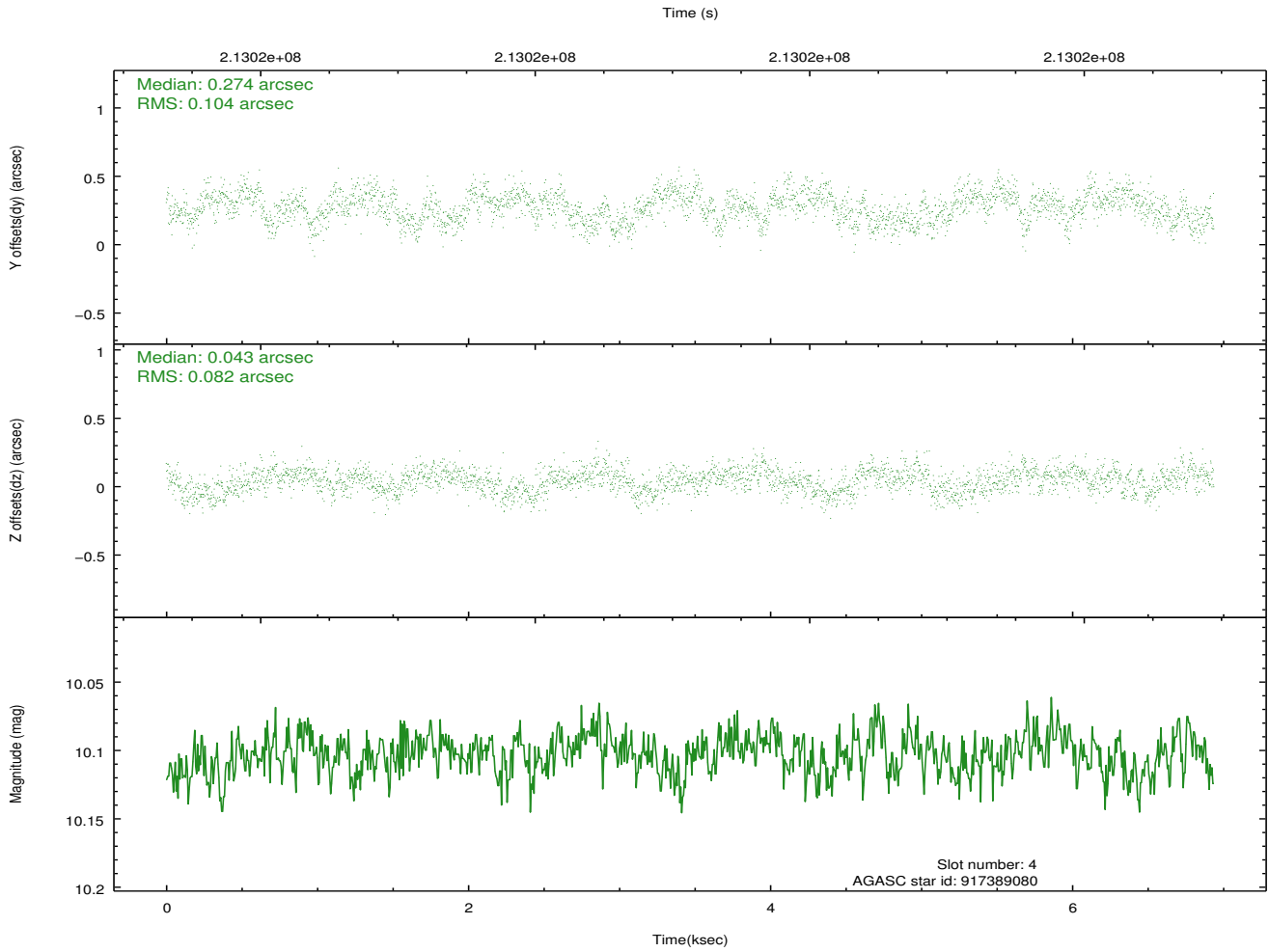
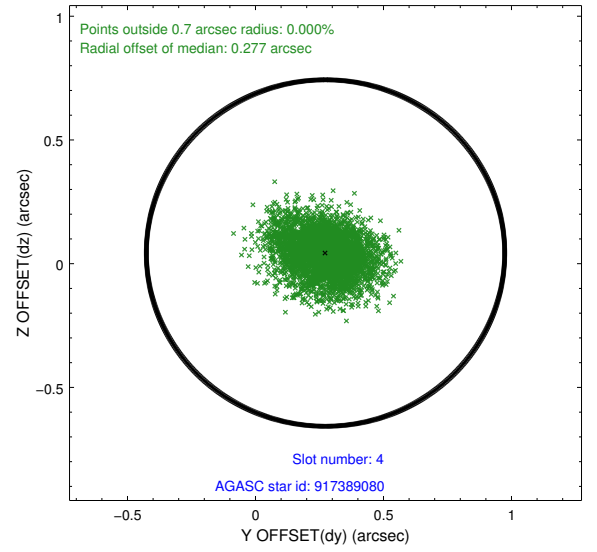
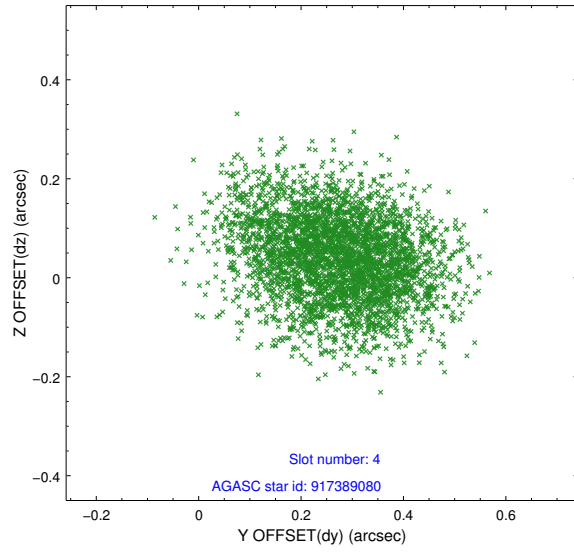
slot	status	id	mag	n_pts	med_dy	med_dz	dr1	dr2	ra	dec	mean_y	mean_z
0	FID	ACIS-S-2	7.10	1693	-0.050	-0.051	0.007	0.012	0.000000	0.000000	-759.25	-1730.40
1	FID	ACIS-S-4	7.21	1693	0.095	0.038	0.005	0.009	0.000000	0.000000	2153.78	177.33
2	FID	ACIS-S-5	7.23	1693	-0.075	0.021	0.007	0.011	0.000000	0.000000	-1811.06	171.90
3	GUIDE	917386656	7.26	3384	-0.110	-0.078	0.073	0.114	15.342124	-33.359890	1198.08	1098.81
4	GUIDE	917389080	10.10	3383	0.274	0.043	0.141	0.231	15.722484	-33.662555	2087.69	-204.84
5	GUIDE	917389288	9.57	3382	-0.067	0.008	0.104	0.169	15.394706	-33.185862	1483.35	1678.80
6	GUIDE	917645208	10.19	3379	0.034	-0.002	0.151	0.244	15.521597	-34.090794	1177.15	-1586.19
7	GUIDE	917651048	9.66	3381	-0.128	0.035	0.107	0.171	14.655628	-34.424089	-1590.90	-2234.25

2.4 Star Slots

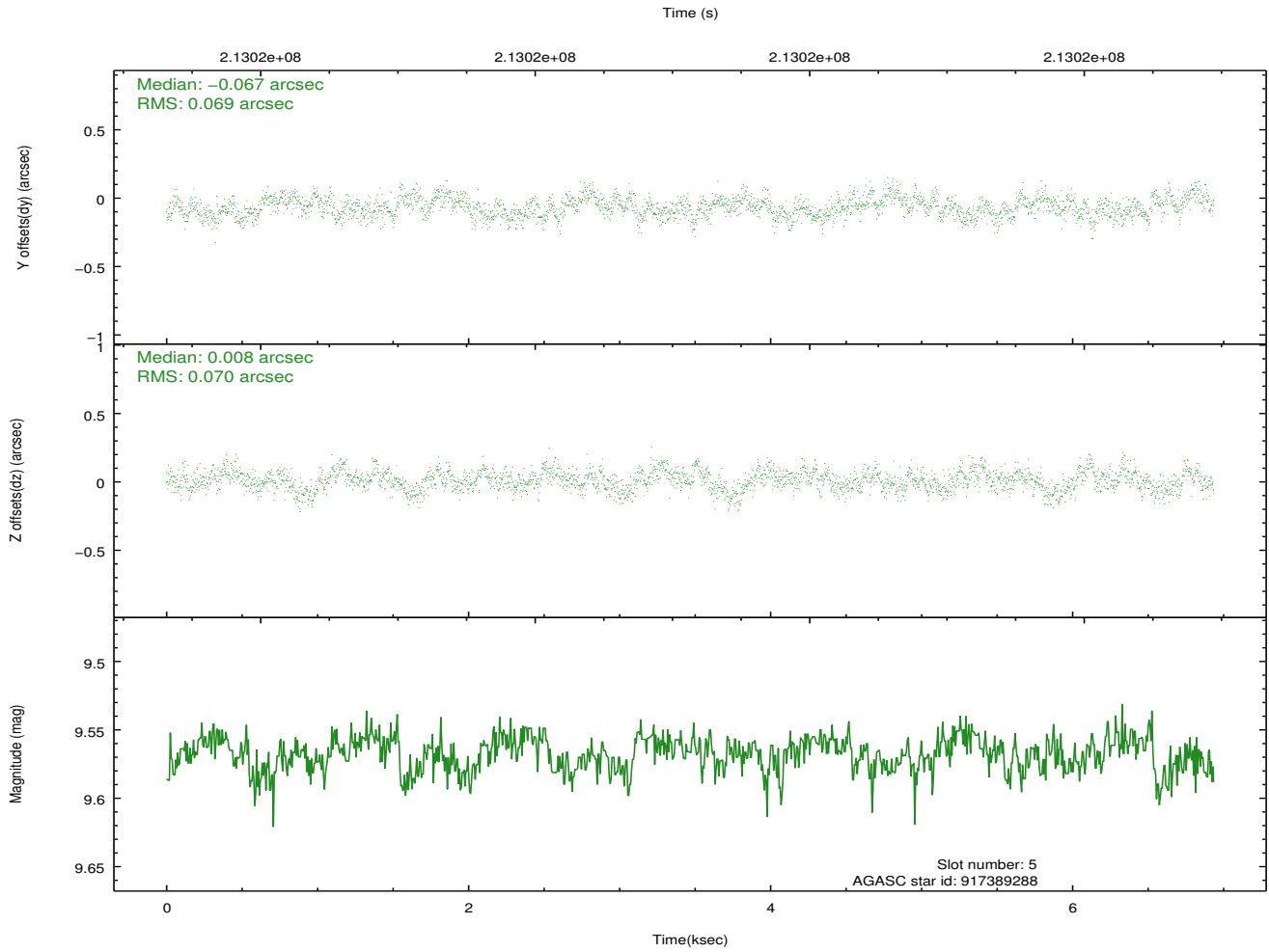
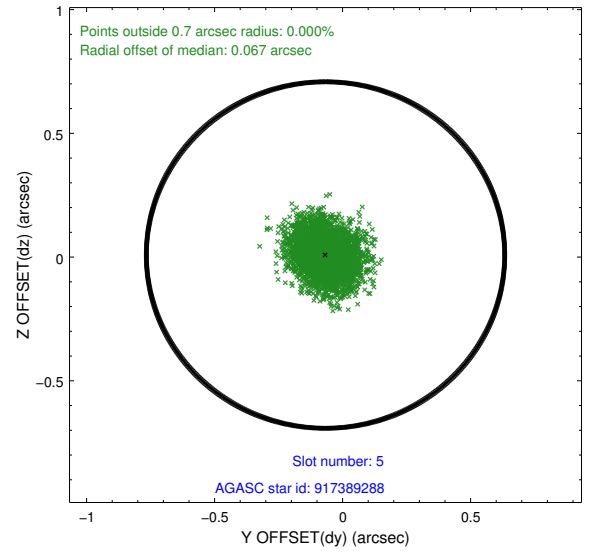
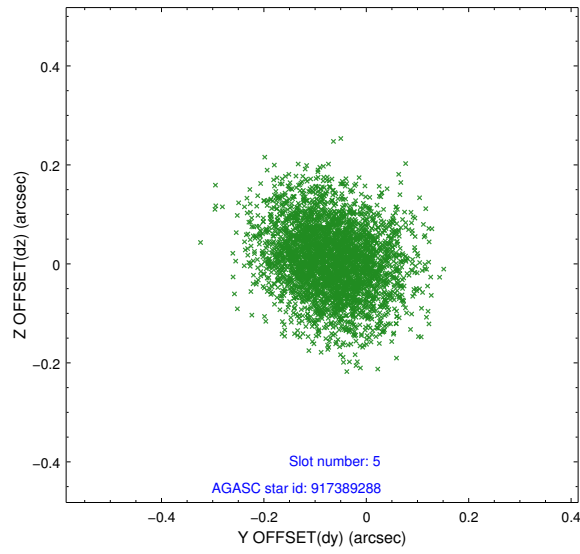
2.4.1 Slot 3



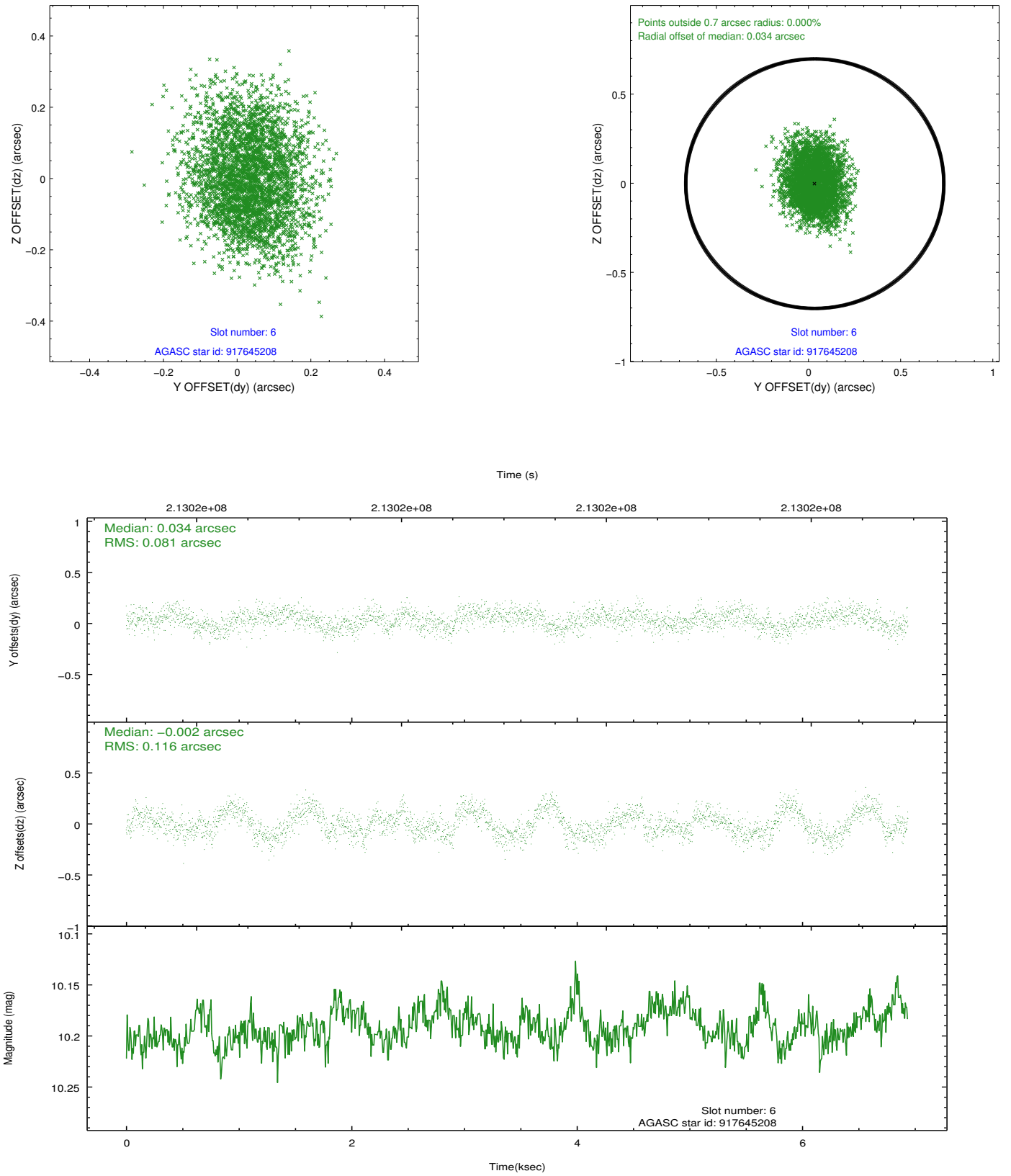
2.4.2 Slot 4



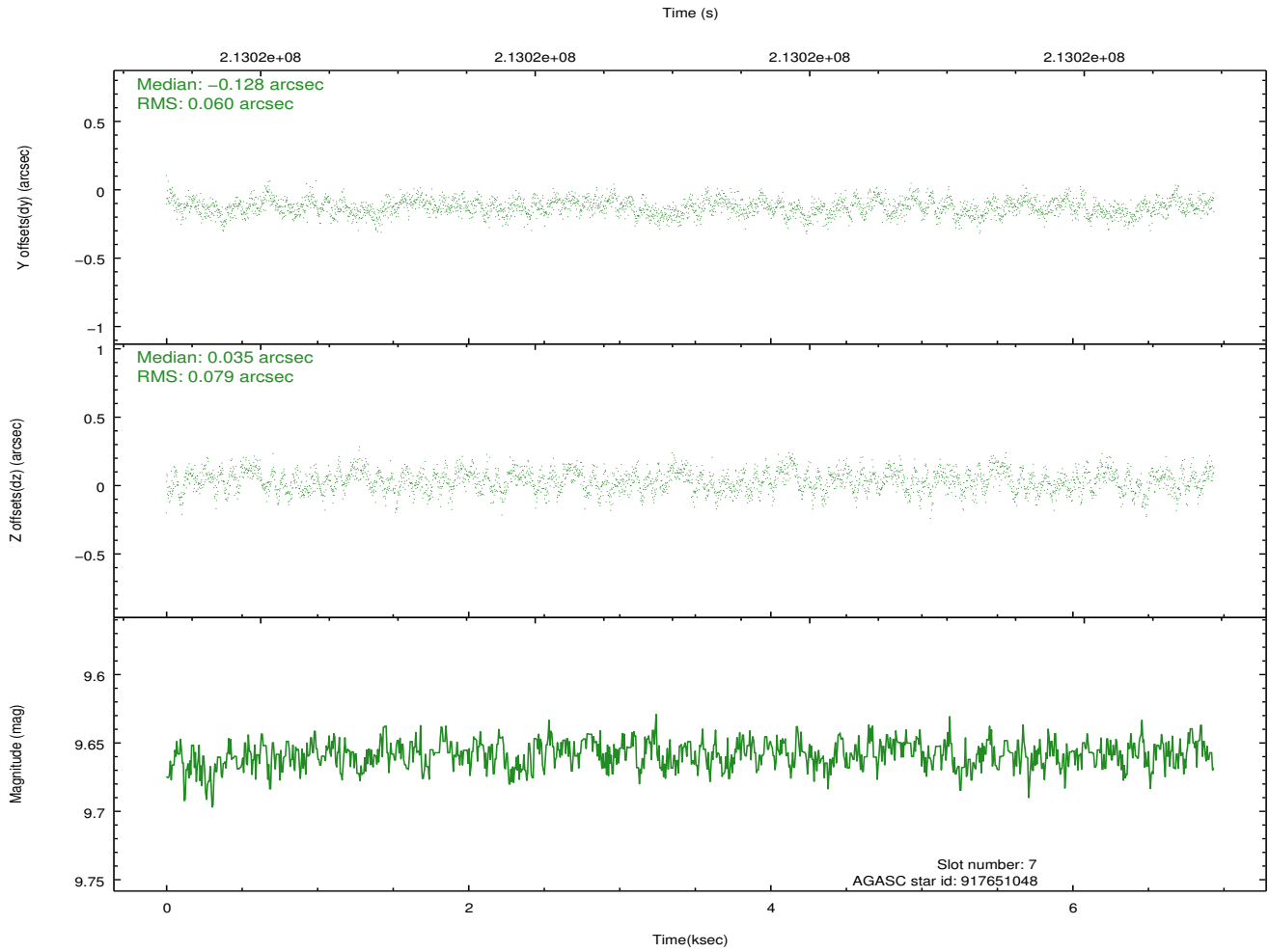
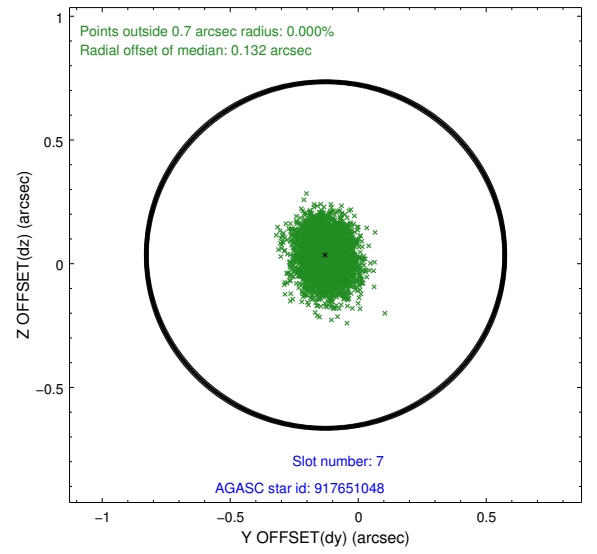
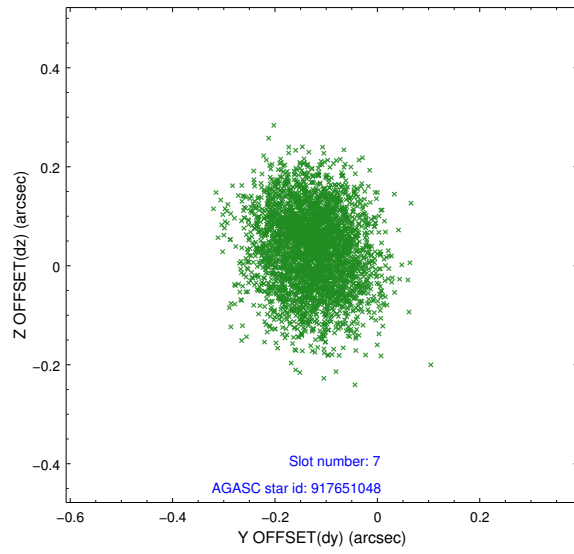
2.4.3 Slot 5



2.4.4 Slot 6

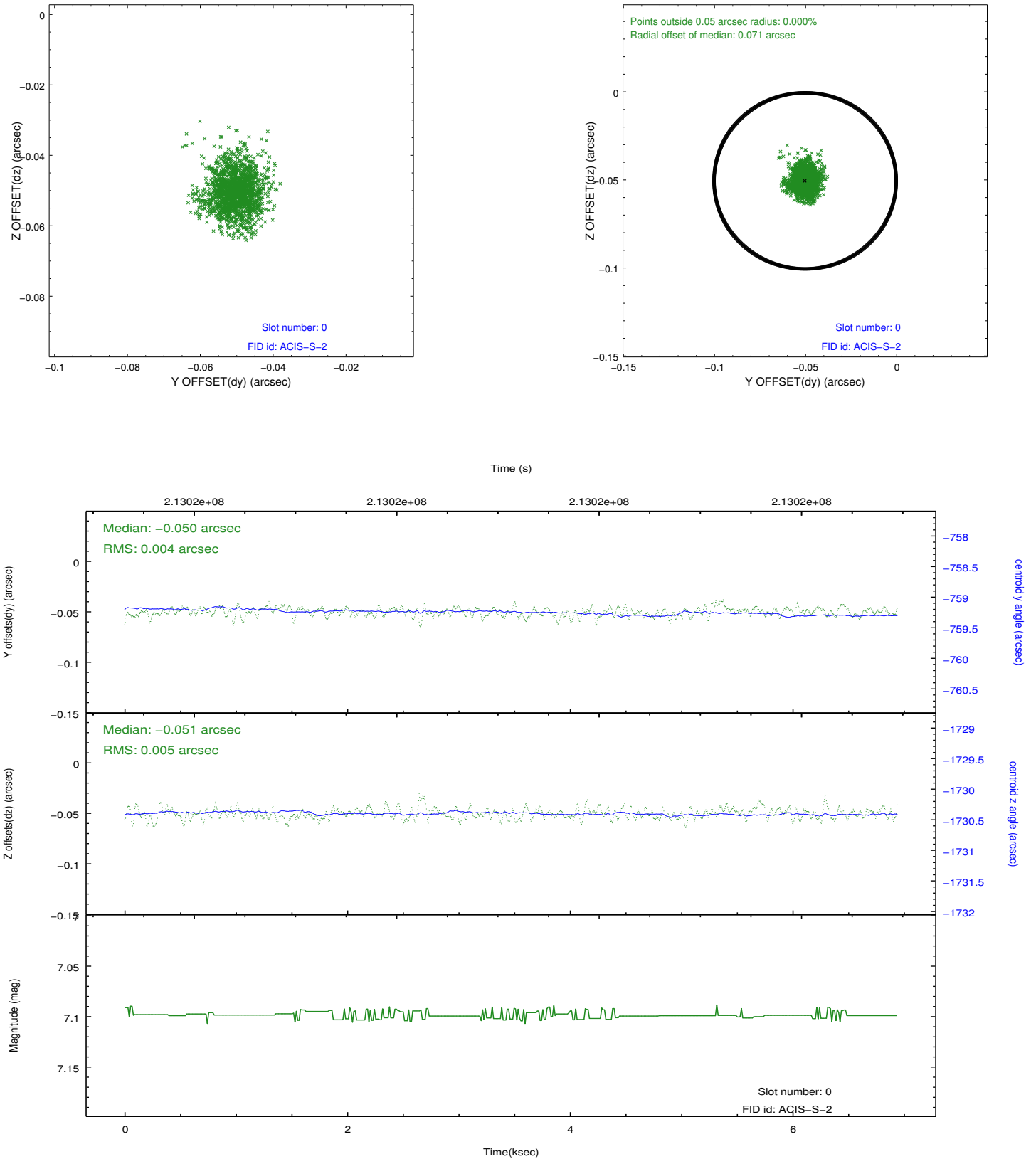


2.4.5 Slot 7

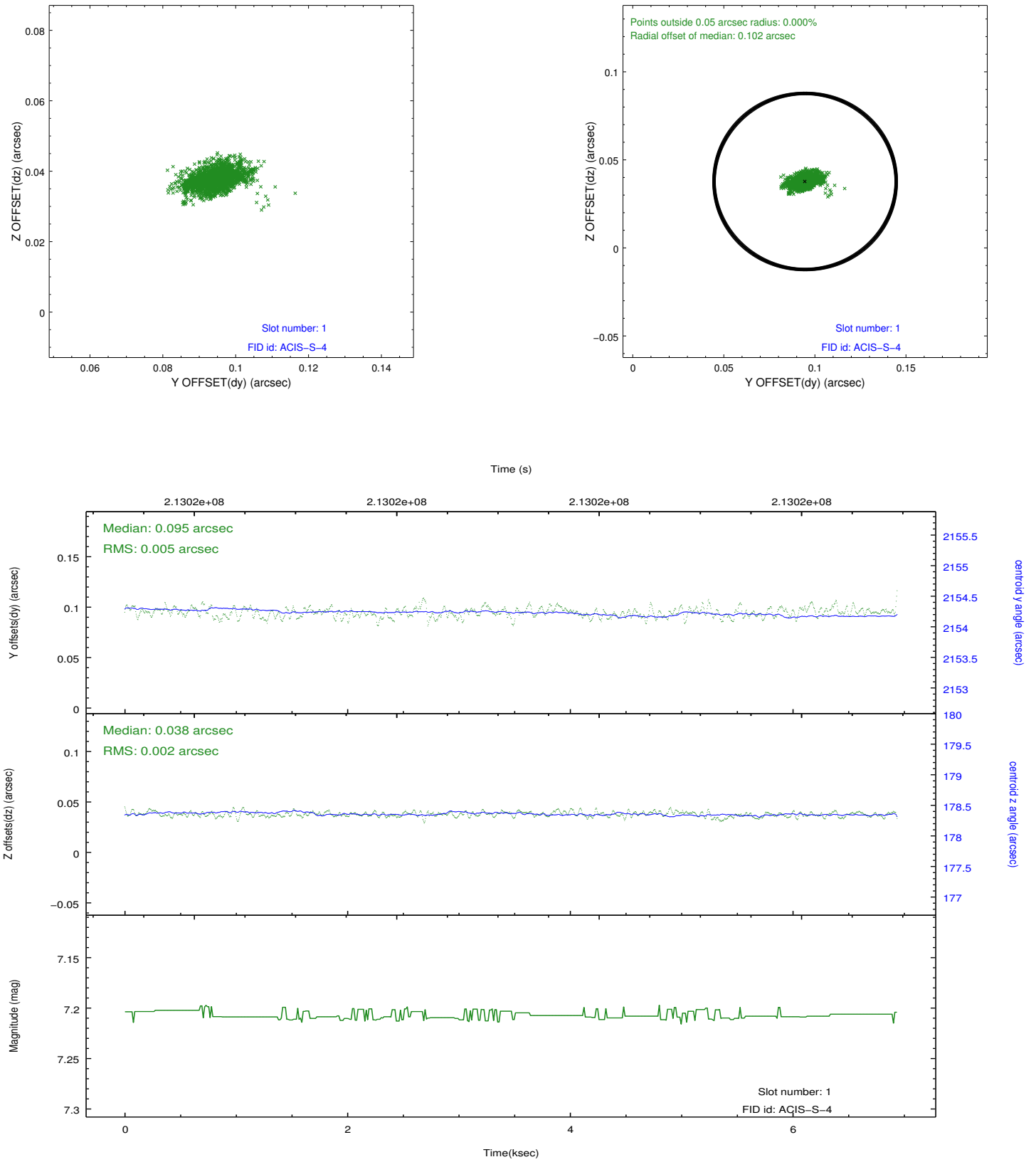


2.5 FID Slots

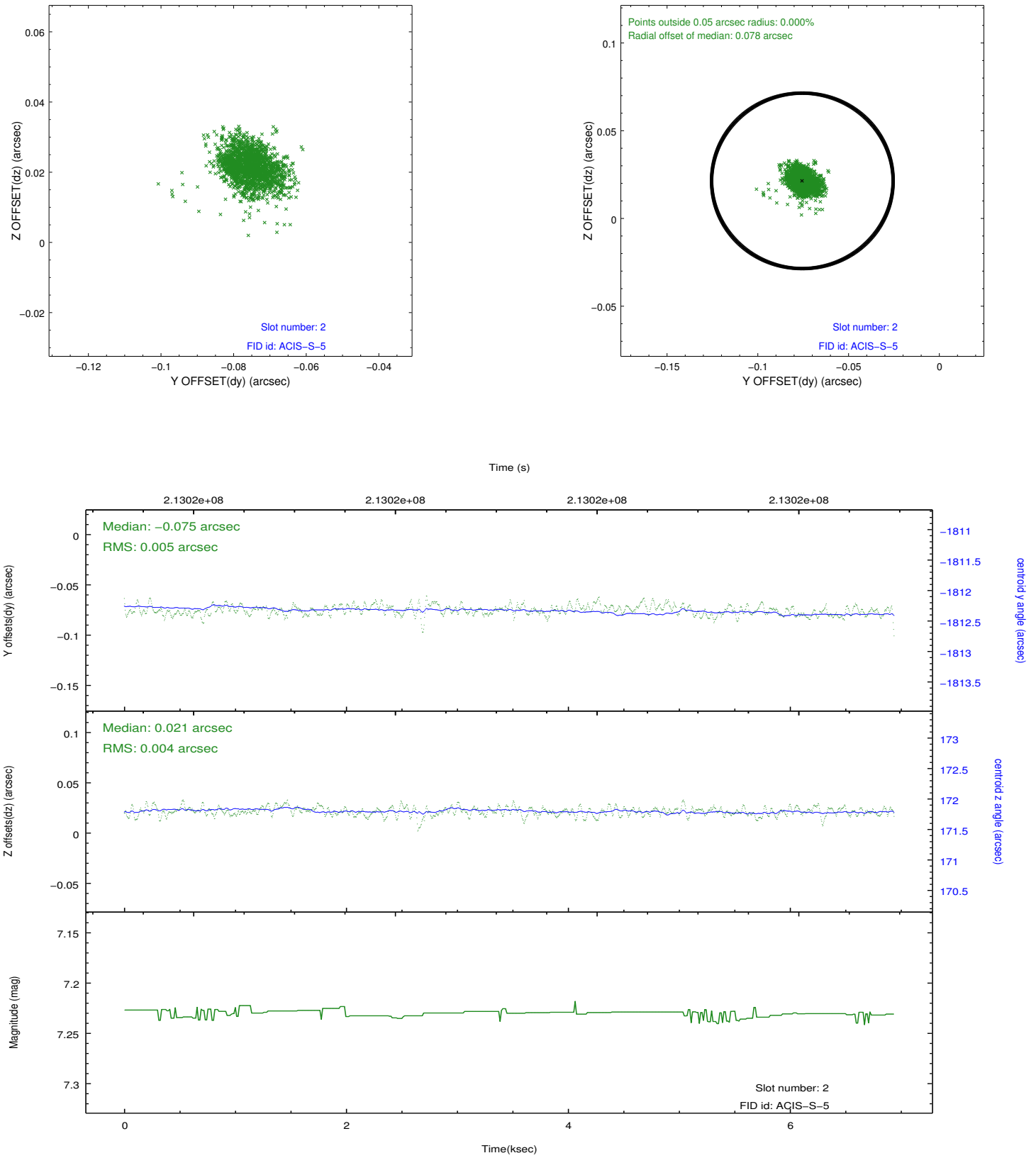
2.5.1 Slot 0



2.5.2 Slot 1



2.5.3 Slot 2



A Summary

A.1 Status

V&V Scientist	Beth Sundheim
V&V Date (YYYY-MM-DD)	2013.01.03
V&V Edition	1
V&V Disposition and Status	OK
V&V Charge Time	5.958

A.2 Comments

Joint proposal with NOAO.