

V&V Reference Report

L2 ASCDS Version : 7.6.7.1

Observation 4709 - L2 Version 001
Chandra X-Ray Center

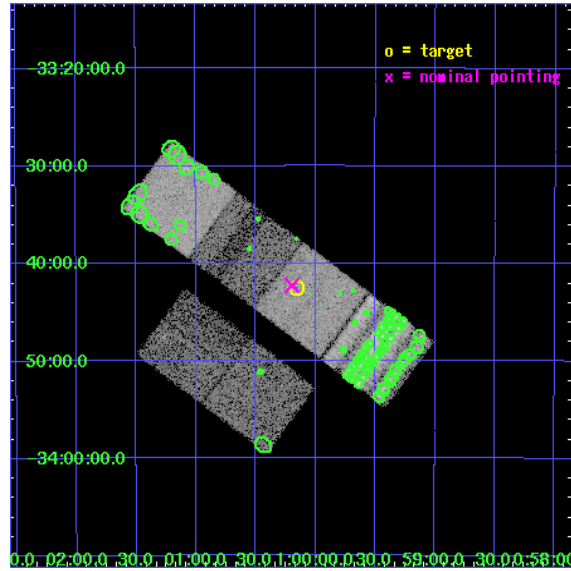
L2 Processing Date : Apr 17 2006

Contents

1	Front	2
2	OBI	3
2.1	OBI	3
2.1.1	Images	3
2.1.2	Bias	3
2.1.3	Parameters	4
2.1.4	Events	4
2.2	Compared Parameters	5
2.3	Aspect	6
2.4	Star Slots	9
2.4.1	Slot 3	9
2.4.2	Slot 4	10
2.4.3	Slot 5	11
2.4.4	Slot 6	12
2.4.5	Slot 7	13
2.5	FID Slots	14
2.5.1	Slot 0	14
2.5.2	Slot 1	15
2.5.3	Slot 2	16
3	Point Sources	17
A	Summary	18
A.1	Status	18
A.2	Comments	18

1 Front

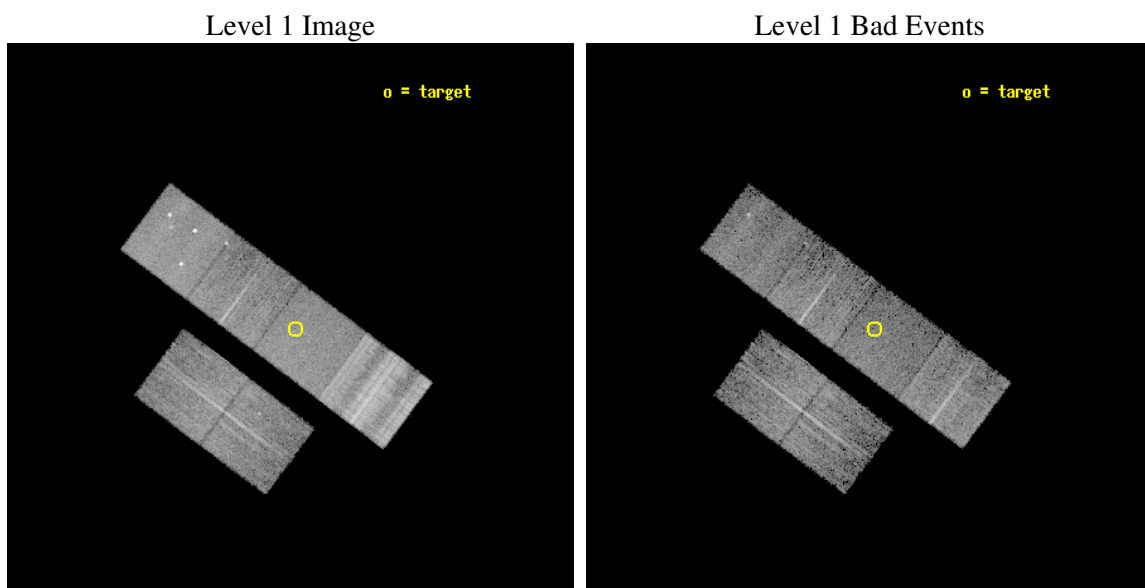
seq_num	600364
obs_id	4709
title	Using the Sculptor Dwarf Spheroidal Galaxy to Constrain X-ray Binary Production in Population II
observer	Dr. Thomas Maccarone
object	SCULPTOR DWARF SPHEROIDAL
dtcycle	0
cycle	P
ra_targ	15.039167
dec_targ	-33.708889
ra_nom	15.049405140618
dec_nom	-33.70454318627
roll_nom	36.807412019167
revision	2
ontime	6169.5999770164
livetime	6091.4767872204
ontime2	6169.5999770164
ontime3	6169.5999770164
ontime5	6169.5999770164
ontime6	6169.5999770164
ontime7	6169.5999770164
ontime8	6169.5999770164
l2events	113357



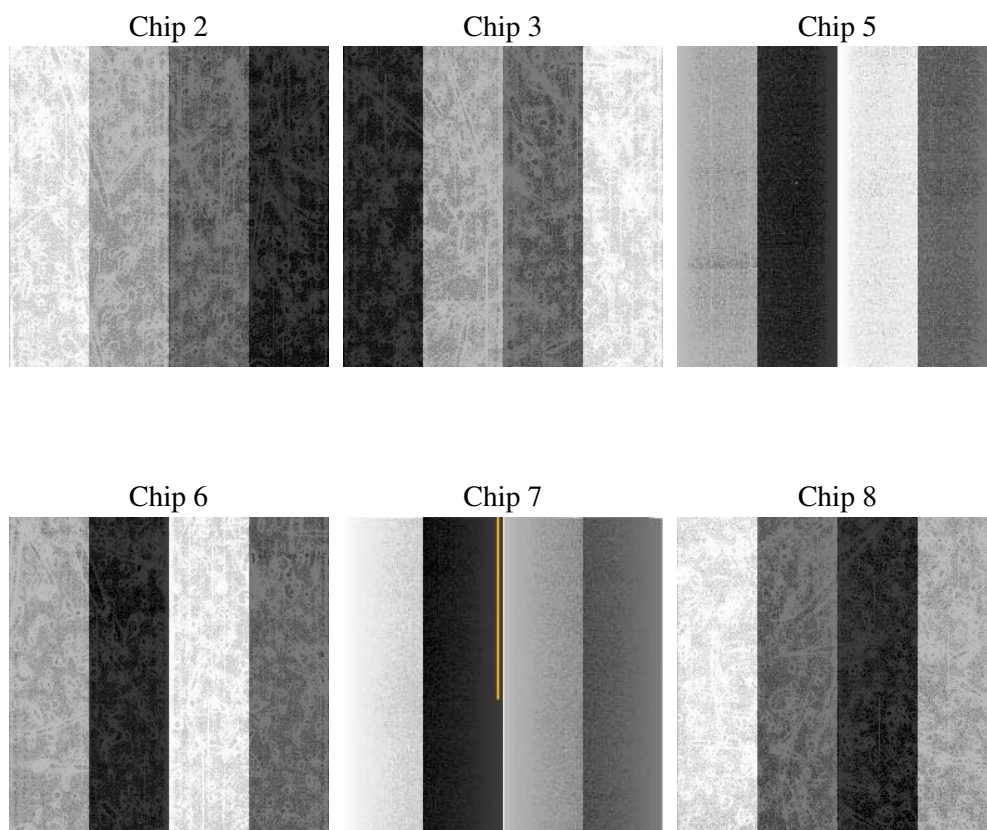
2 OBI

2.1 OBI

2.1.1 Images



2.1.2 Bias



2.1.3 Parameters

obi_num	1
ascdsver	7.6.7.1
caldsver	3.2.1
date	2006-04-17T15:31:03
revision	2

sched_exp_time	6000.000000
ontime	7318.1983570755
ontime2	7318.198456645
ontime3	7318.1983570755
ontime5	7318.1983570755
ontime6	7318.198456645
ontime7	7318.1983570755
ontime8	7318.1983570755
l1events	500114

2.1.4 Events

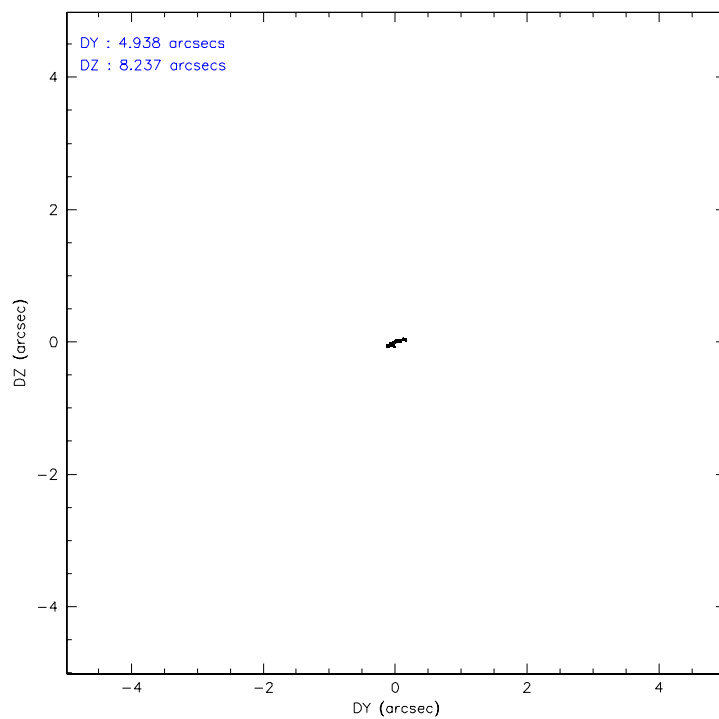
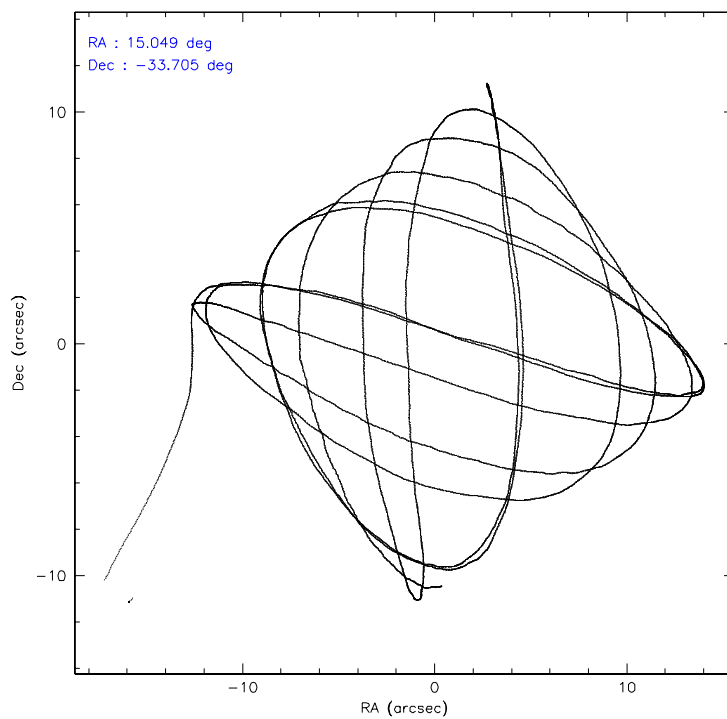
	ccd 2	ccd 3	ccd 5	ccd 6	ccd 7	ccd 8
level 1 events	68275	62081	88380	68137	74246	138995
rejected events	58419	52561	53633	58105	49517	75337
rejected %	85%	84%	60%	85%	66%	54%

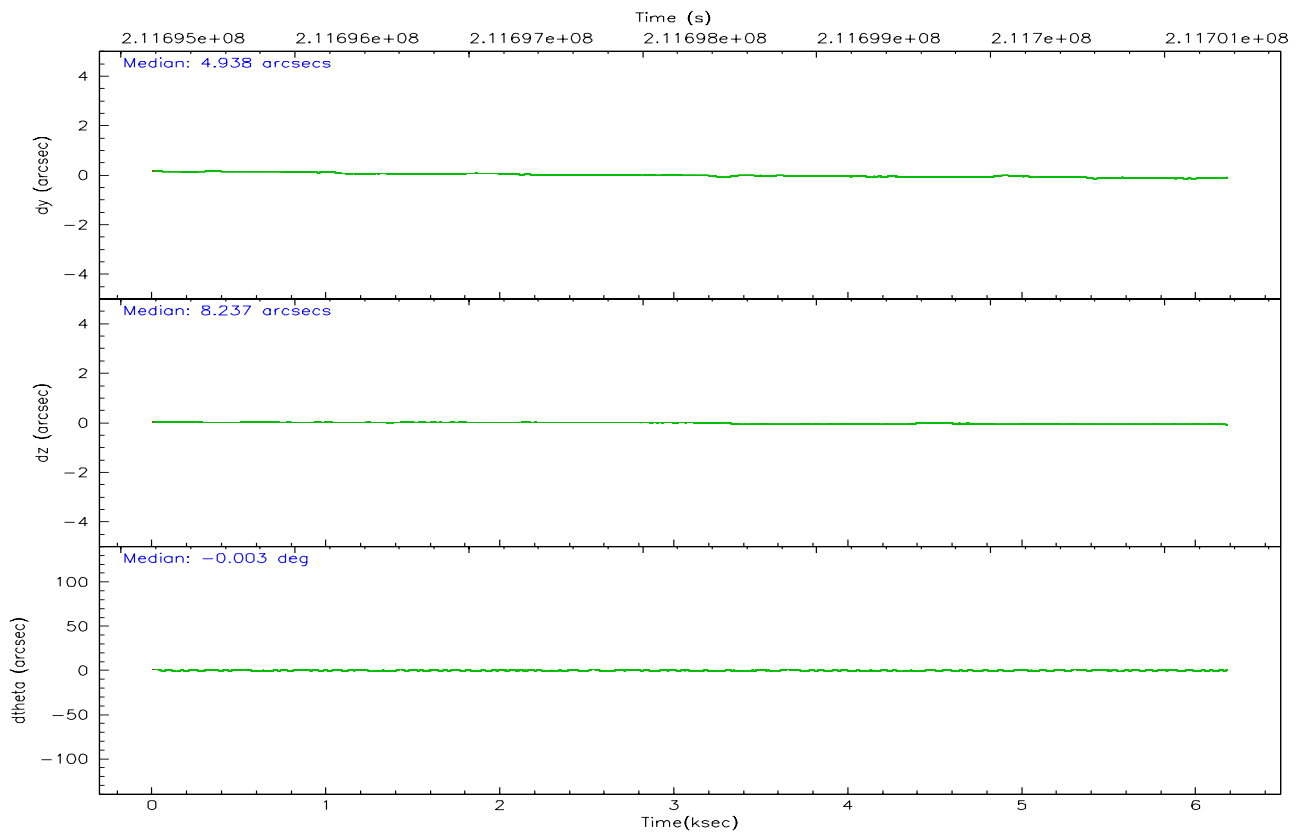
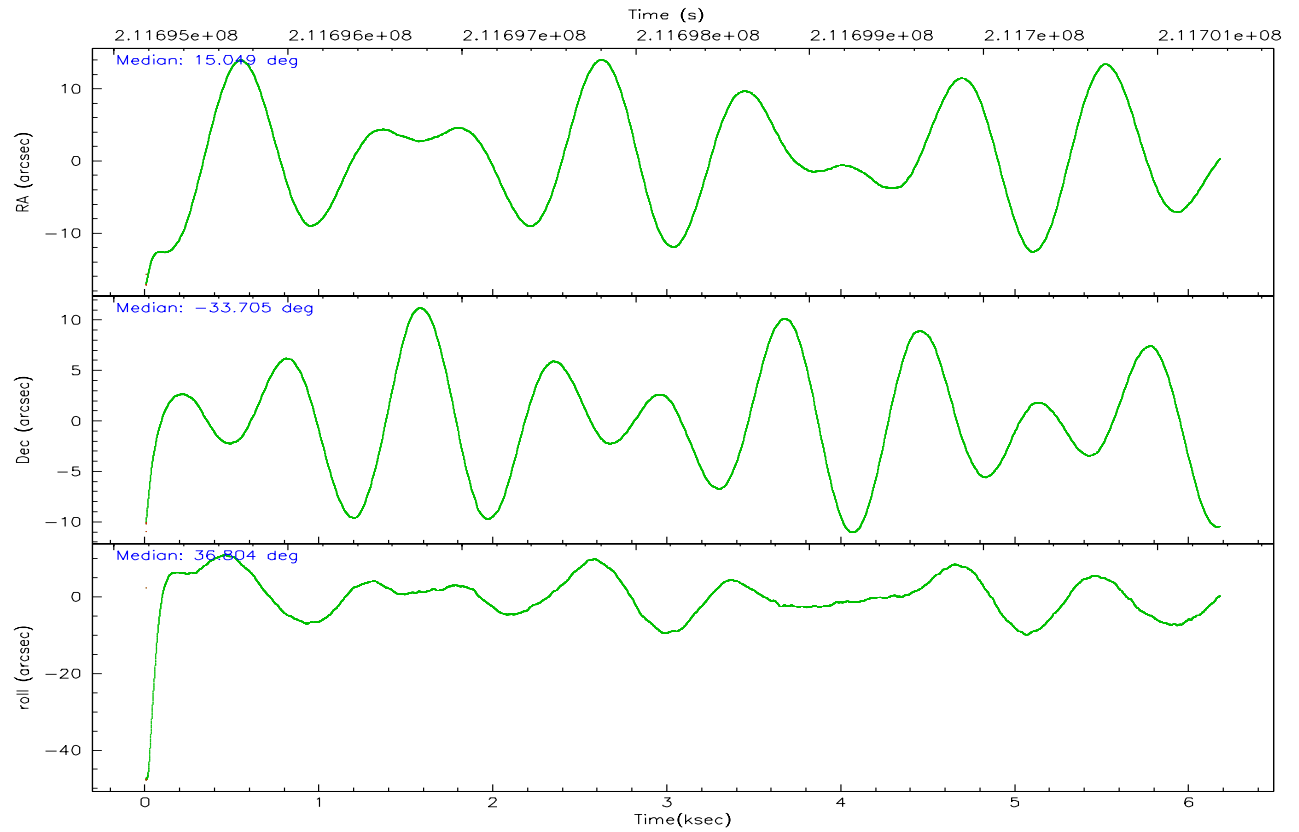
	ccd 2	ccd 3	ccd 5	ccd 6	ccd 7	ccd 8
grade 0 events	5021	4326	6055	4678	1889	25820
	7%	6%	6%	6%	2%	18%
grade 1 events	43	38	286	29	41	229
	0%	0%	0%	0%	0%	0%
grade 2 events	2858	3135	11990	3585	7473	10230
	4%	5%	13%	5%	10%	7%
grade 3 events	605	621	1417	660	1643	13408
	0%	1%	1%	0%	2%	9%
grade 4 events	884	676	1263	661	1539	12132
	1%	1%	1%	0%	2%	8%
grade 5 events	2147	2261	4142	2372	4738	3771
	3%	3%	4%	3%	6%	2%
grade 6 events	2217	2274	20283	2158	16854	13529
	3%	3%	22%	3%	22%	9%
grade 7 events	54500	48750	42944	53994	40069	59876
	79%	78%	48%	79%	53%	43%

2.2 Compared Parameters

Parameter	Planned	Actual	Parameter	Planned	Actual
Instrument	ACIS	ACIS	Obspar format version number	6	6
Detector	ACIS-235678	ACIS-235678	Obspar file type	PREDICTED	ACTUAL
Grating	NONE	NONE	Obspar update status	NONE	UPDATED
Data mode	VFAINT	VFAINT	On-chip summing requested	N	N
Observation mode	POINTING	POINTING	Subarray requested	NONE	NONE
Pointing RA	15.037057	15.04940514061808	Alternating exposures requested	N	N
Pointing Dec	-33.729712	-33.70454318626983	Primary exposure time	0.000000	3.2
Pointing Roll	36.644041	36.80741201916665			
SIM focus pos (mm)	-0.684267	-0.6828225247311905			
SIM defocus (mm)	0	0.001444936568705701			
SIM translation stage pos (mm)	-190.132523	-190.1425803651734			
SIM translation stage offset (mm)	0	0.01005778216563158			
Observation start time	211695366.184000	211693727.07297			
Observation start date	2004-09-16T04:15:02	2004-09-16T03:48:47			
Observation end time	211701366.184000	211702540.53586			
Observation end date	2004-09-16T05:55:02	2004-09-16T06:15:40			
Read mode	TIMED	TIMED			

2.3 Aspect



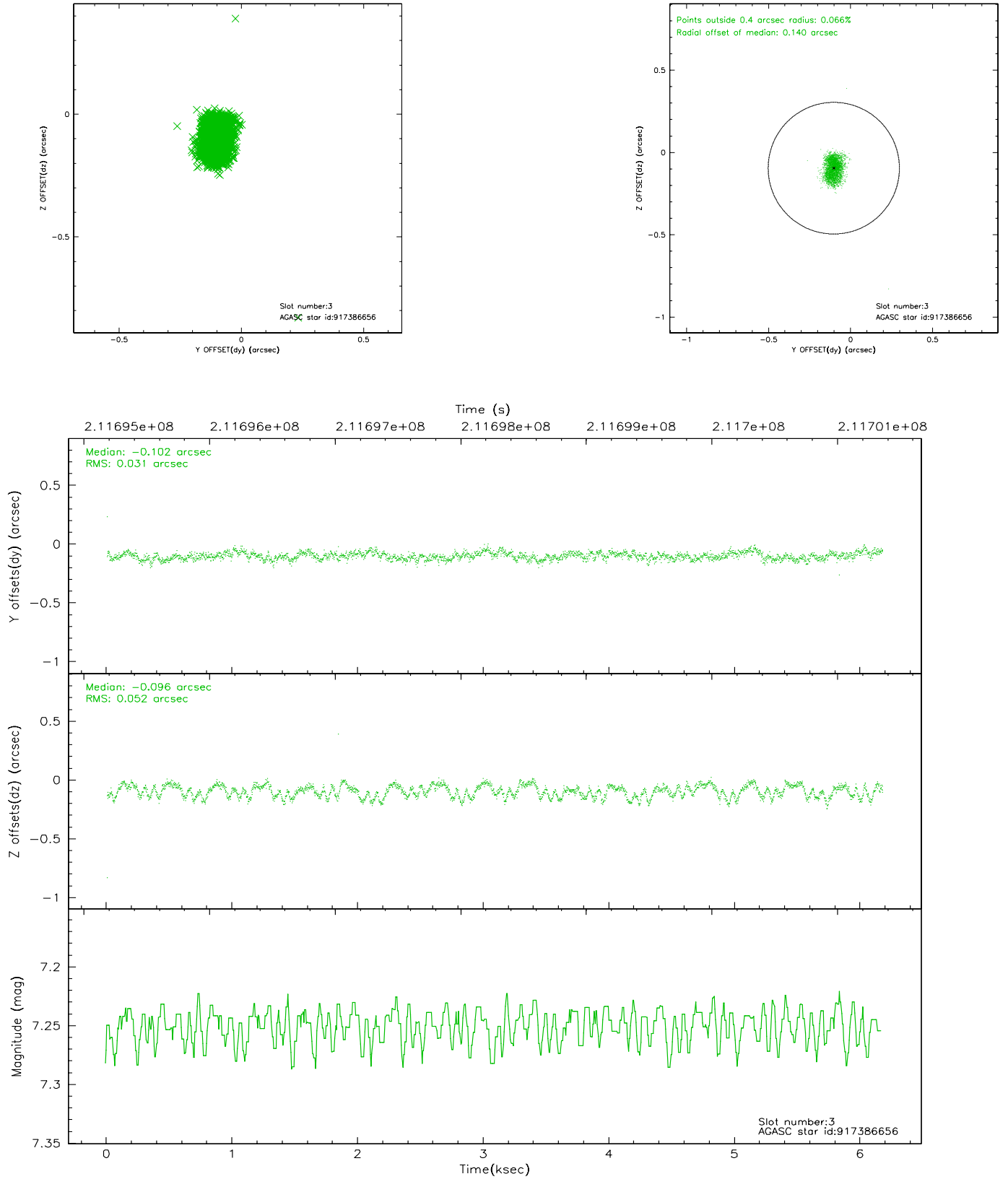


Slot Statistics

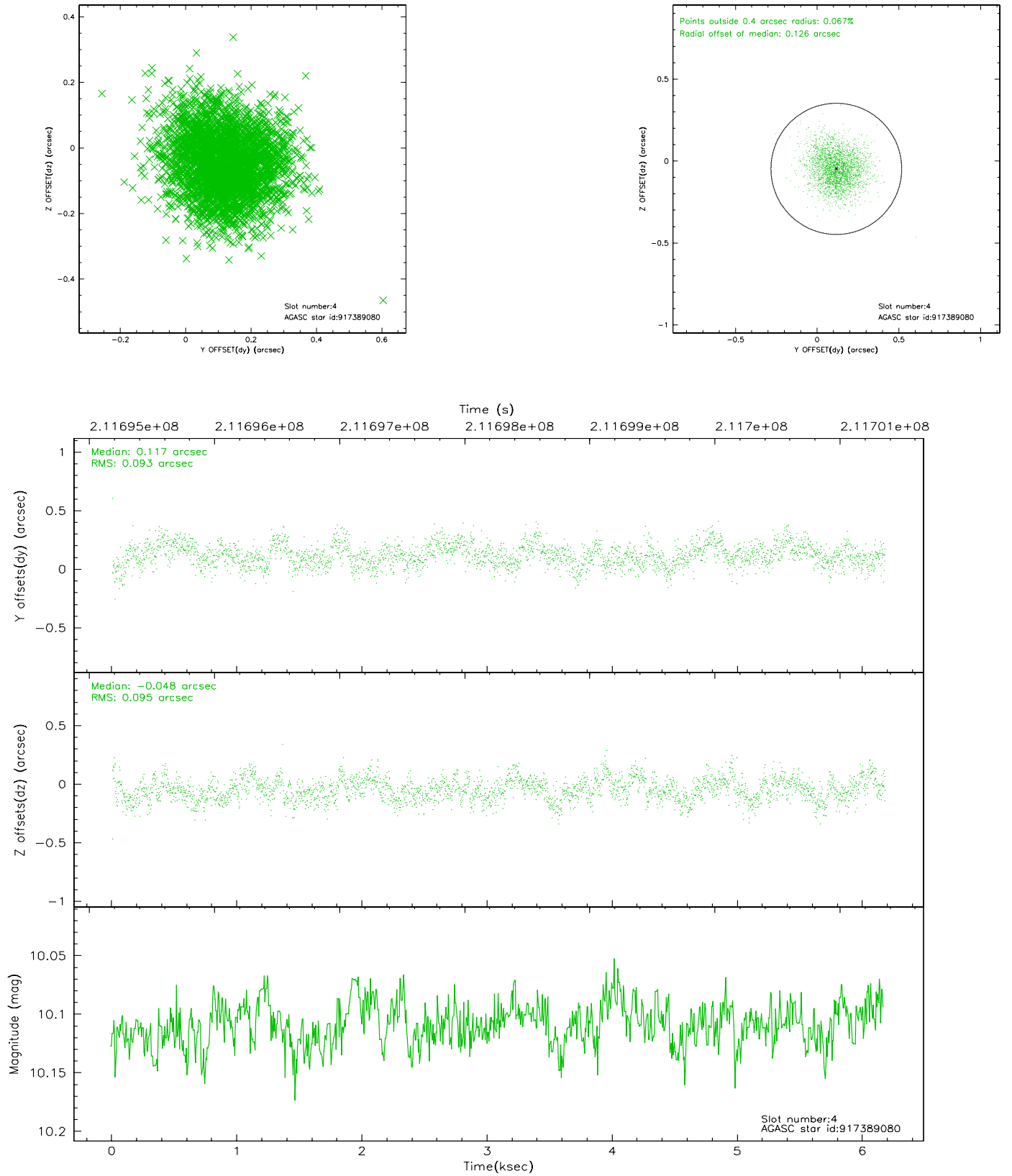
slot	status	id	mag	n_pts	med_dy	med_dz	dr1	dr2	ra	dec	mean_y	mean_z
0	FID	ACIS-S-2	7.10	1506	-0.034	-0.038	0.007	0.011	0.000000	0.000000	-757.69	-1729.40
1	FID	ACIS-S-4	7.21	1507	0.081	0.026	0.005	0.009	0.000000	0.000000	2155.29	178.13
2	FID	ACIS-S-5	7.23	1507	-0.078	0.020	0.006	0.010	0.000000	0.000000	-1809.32	172.93
3	GUIDE	917386656	7.25	3012	-0.102	-0.096	0.063	0.099	15.342124	-33.359890	1530.14	519.41
4	GUIDE	917389080	10.11	3005	0.117	-0.048	0.142	0.225	15.722484	-33.662555	1789.18	-1037.34
5	GUIDE	917389288	9.57	3010	-0.096	0.031	0.114	0.184	15.394706	-33.185862	2032.78	925.77
6	GUIDE	917390768	9.87	3012	-0.001	0.080	0.137	0.215	14.870561	-33.104152	941.98	2106.46
7	GUIDE	917650528	8.71	3011	0.073	0.038	0.062	0.099	14.274554	-33.869842	-2134.13	949.16

2.4 Star Slots

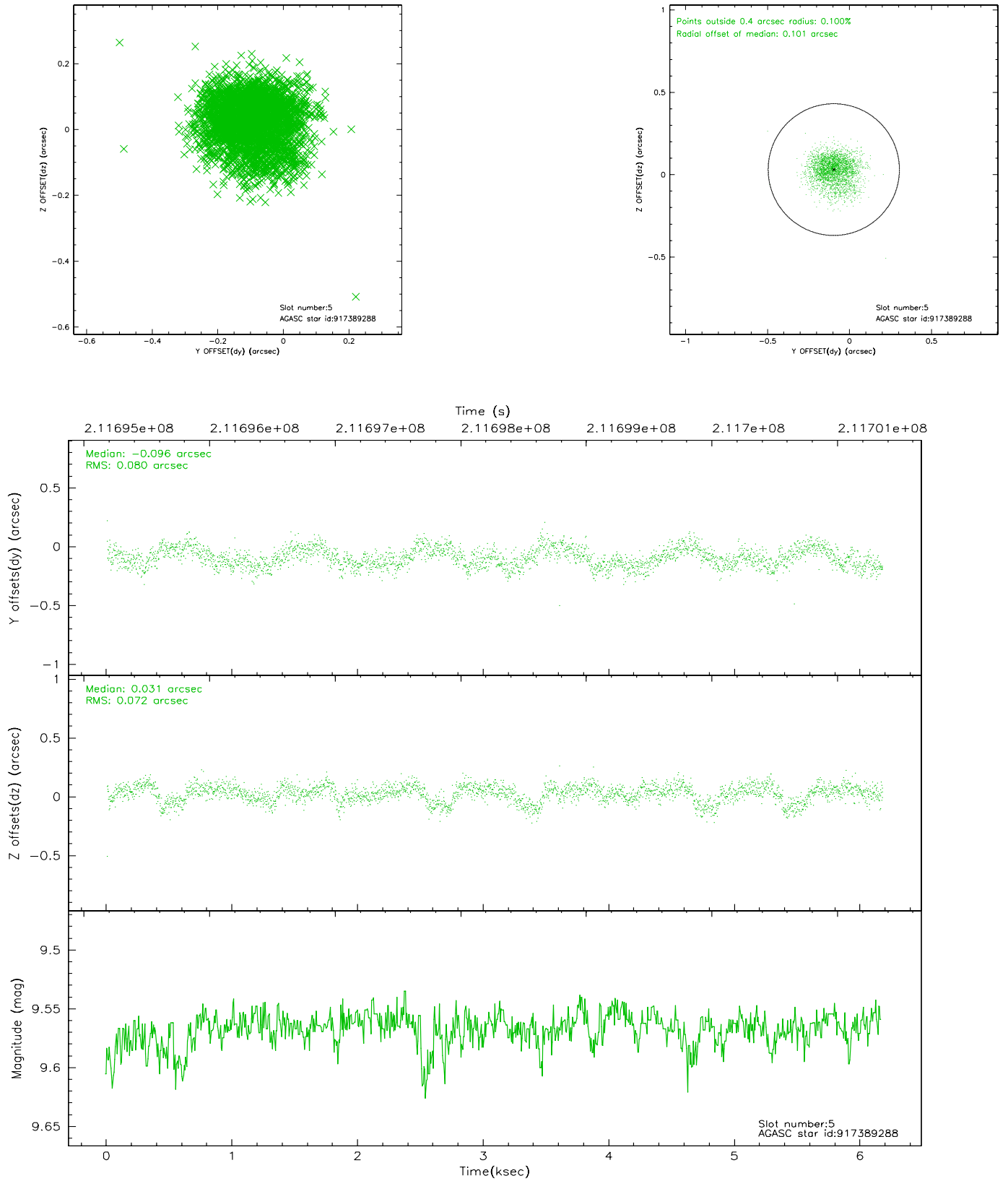
2.4.1 Slot 3



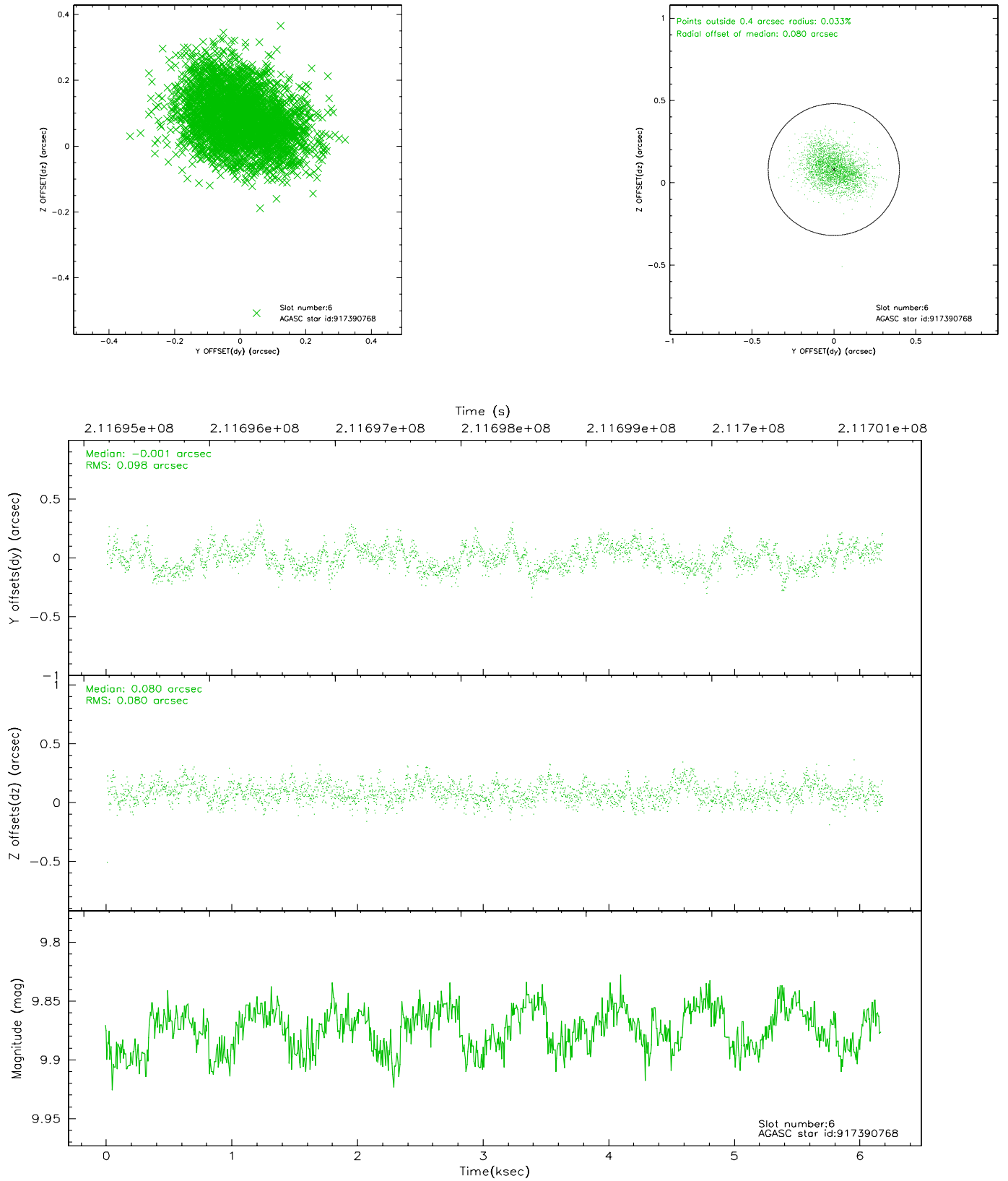
2.4.2 Slot 4



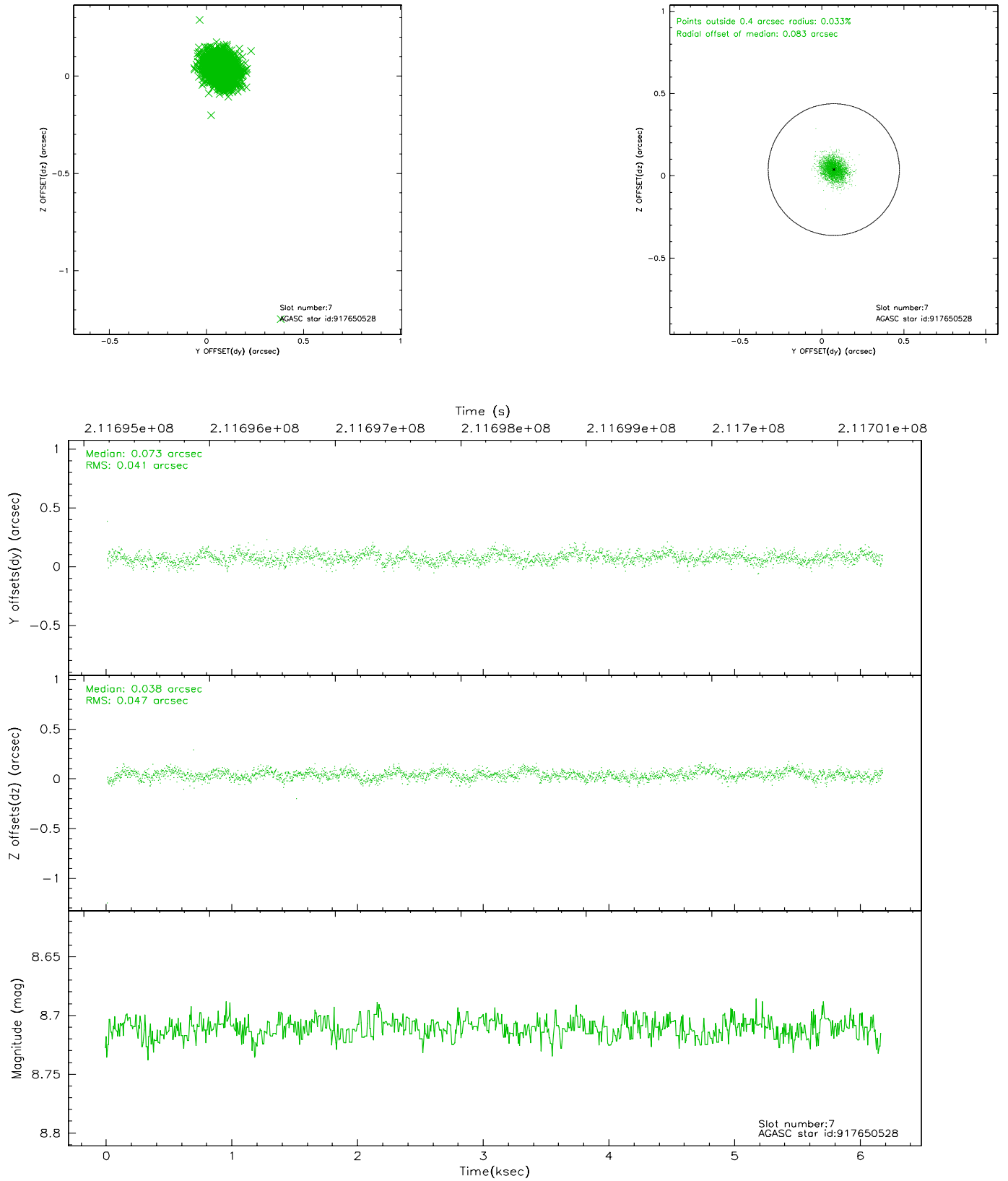
2.4.3 Slot 5



2.4.4 Slot 6

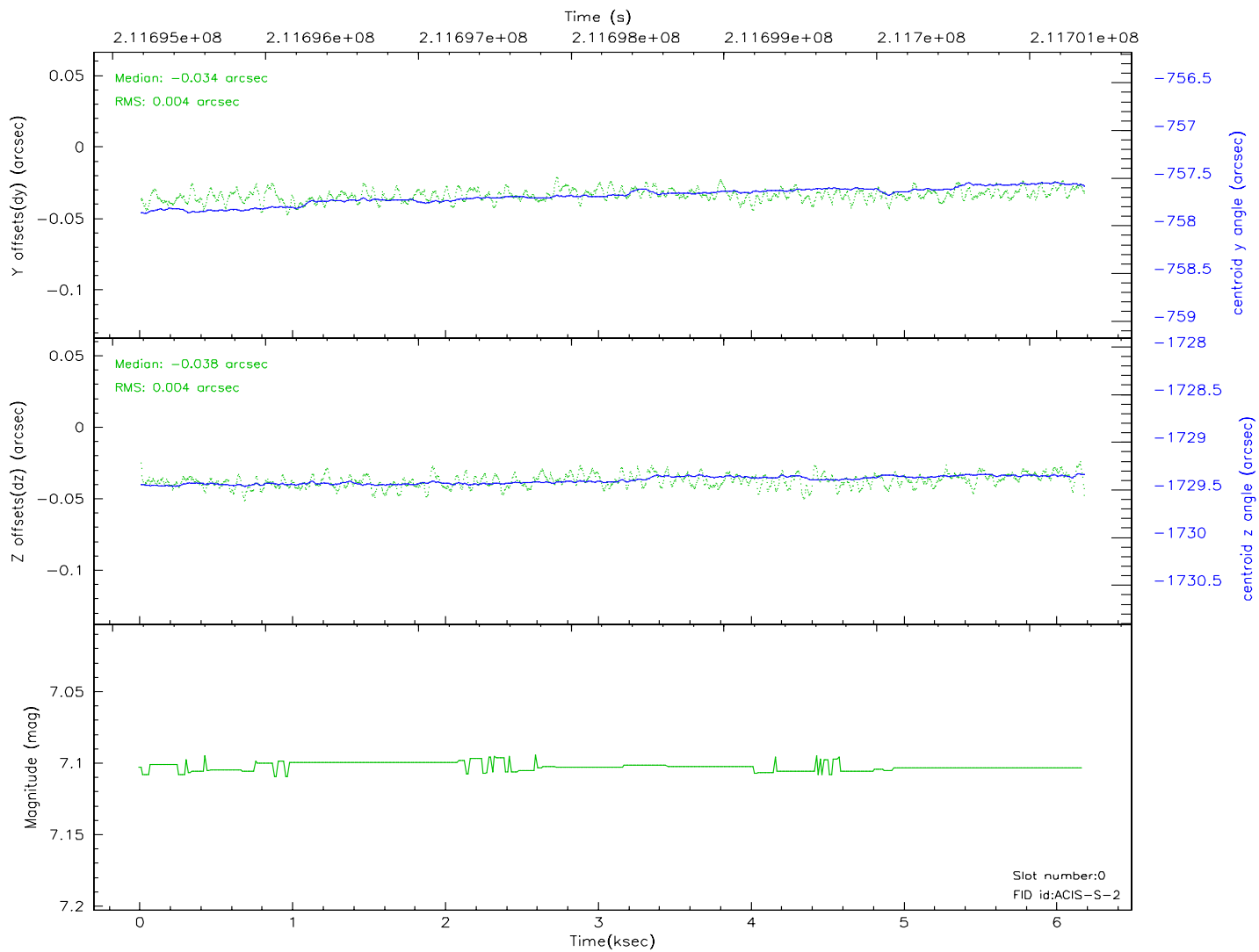
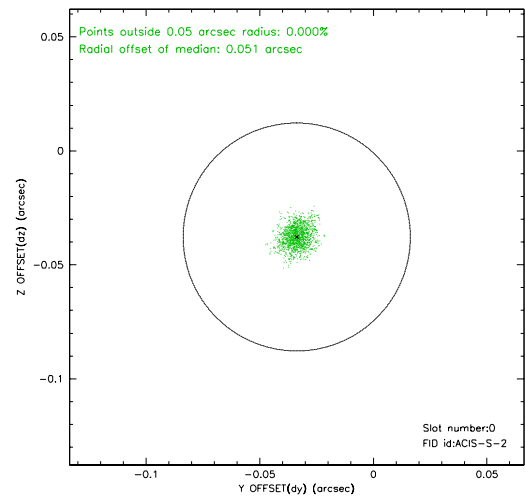
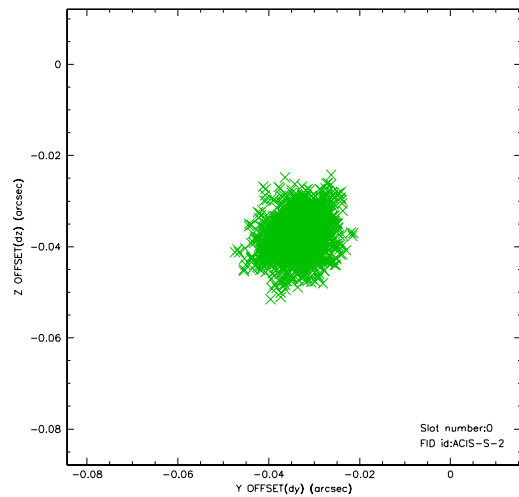


2.4.5 Slot 7

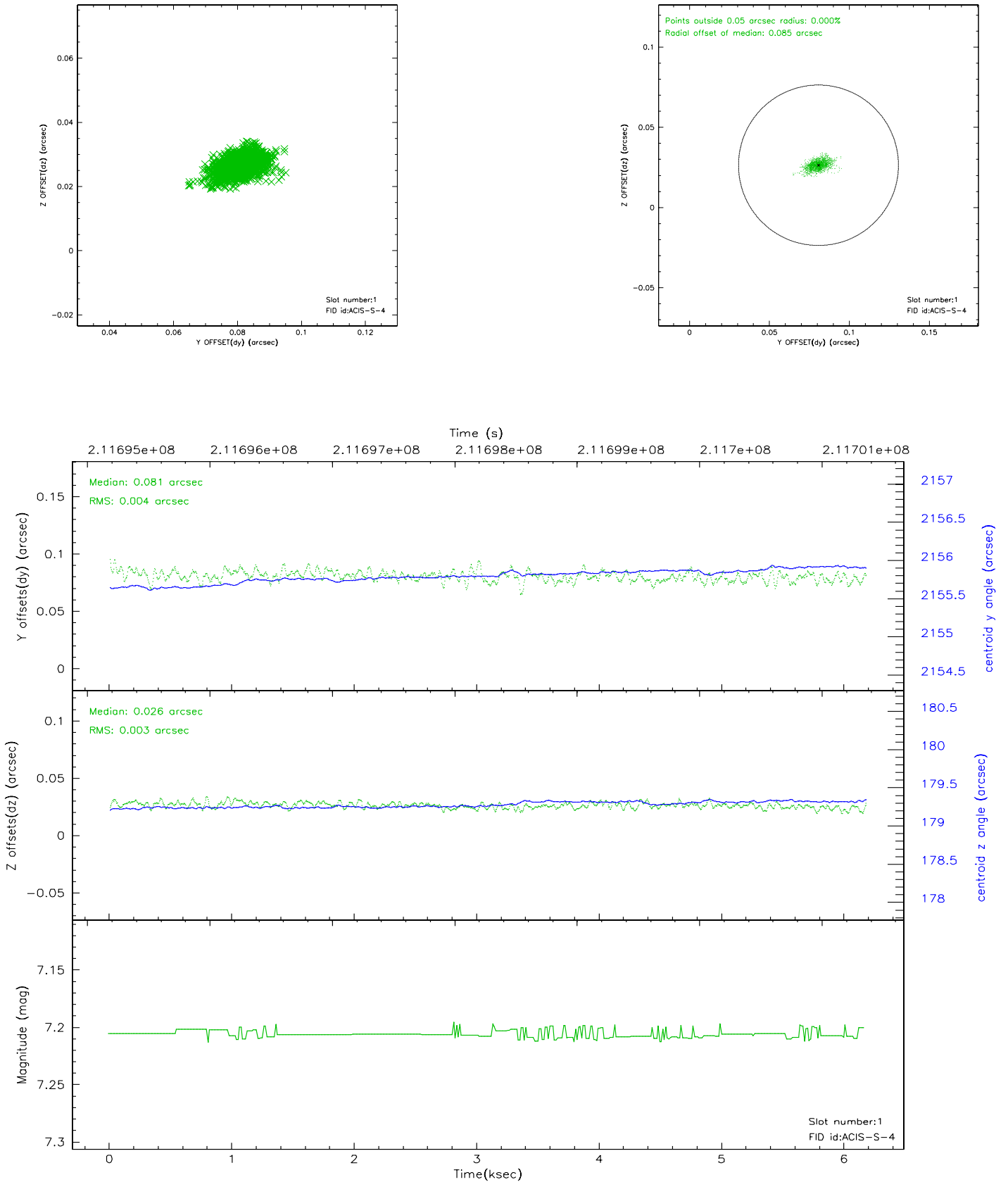


2.5 FID Slots

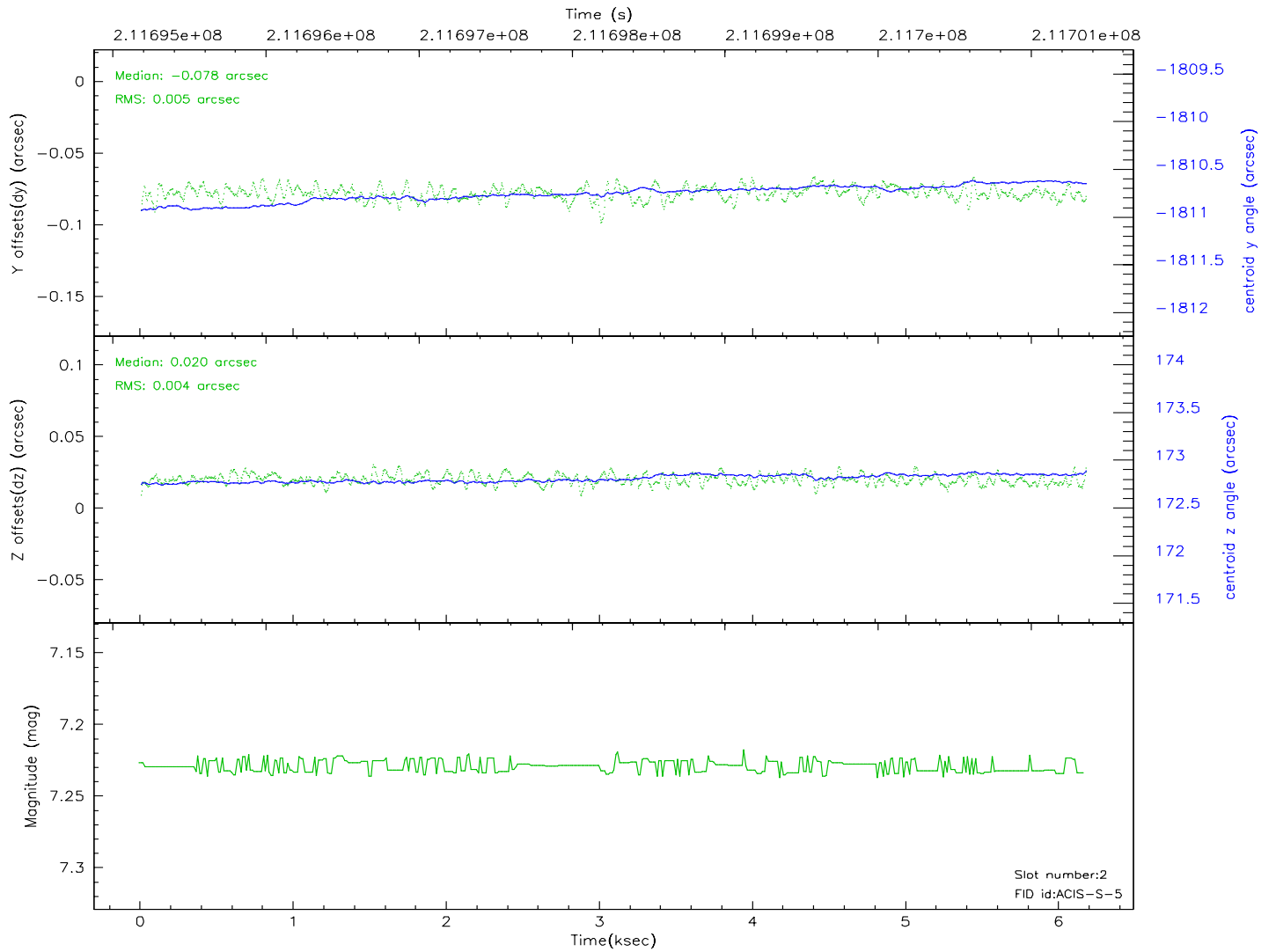
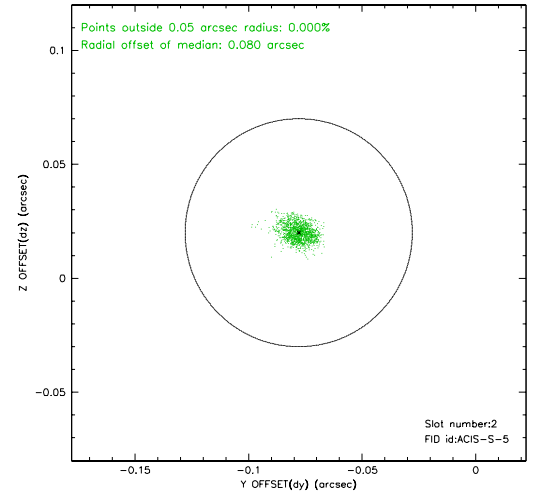
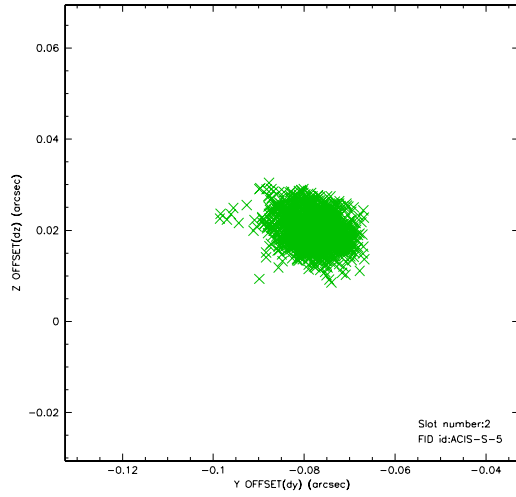
2.5.1 Slot 0



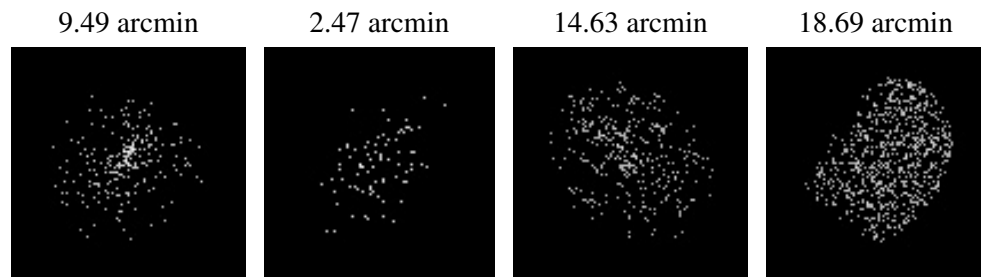
2.5.2 Slot 1



2.5.3 Slot 2



3 Point Sources



A Summary

A.1 Status

V&V Scientist	Beth Sundheim
V&V Date (YYYY-MM-DD)	2006.04.17
V&V Edition	1
V&V Disposition and Status	OK
V&V Charge Time	6.169

A.2 Comments