

V&V Reference Report

L2 ASCDS Version : 8.5

Observation 4706 - L2 Version 3
Chandra X-Ray Center

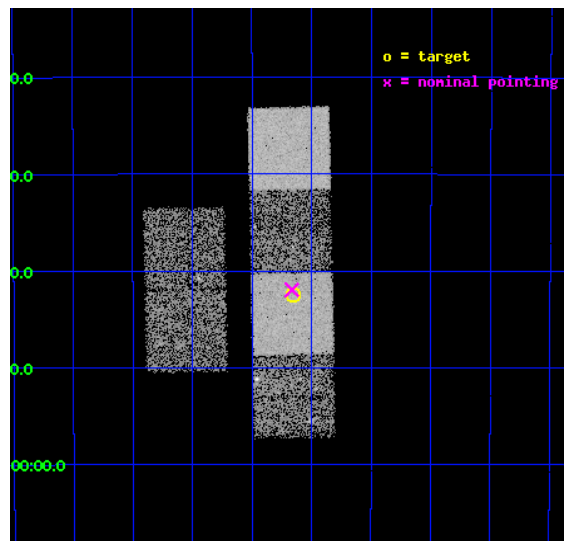
L2 Processing Date : Dec 6 2012

Contents

1	Front	2
2	OBI	3
2.1	OBI	3
2.1.1	Images	3
2.1.2	Bias	3
2.1.3	Parameters	4
2.1.4	Events	4
2.2	Compared Parameters	5
2.3	Aspect	6
2.4	Star Slots	9
2.4.1	Slot 3	9
2.4.2	Slot 4	10
2.4.3	Slot 5	11
2.4.4	Slot 6	12
2.4.5	Slot 7	13
2.5	FID Slots	14
2.5.1	Slot 0	14
2.5.2	Slot 1	15
2.5.3	Slot 2	16
A	Summary	17
A.1	Status	17
A.2	Comments	17

1 Front

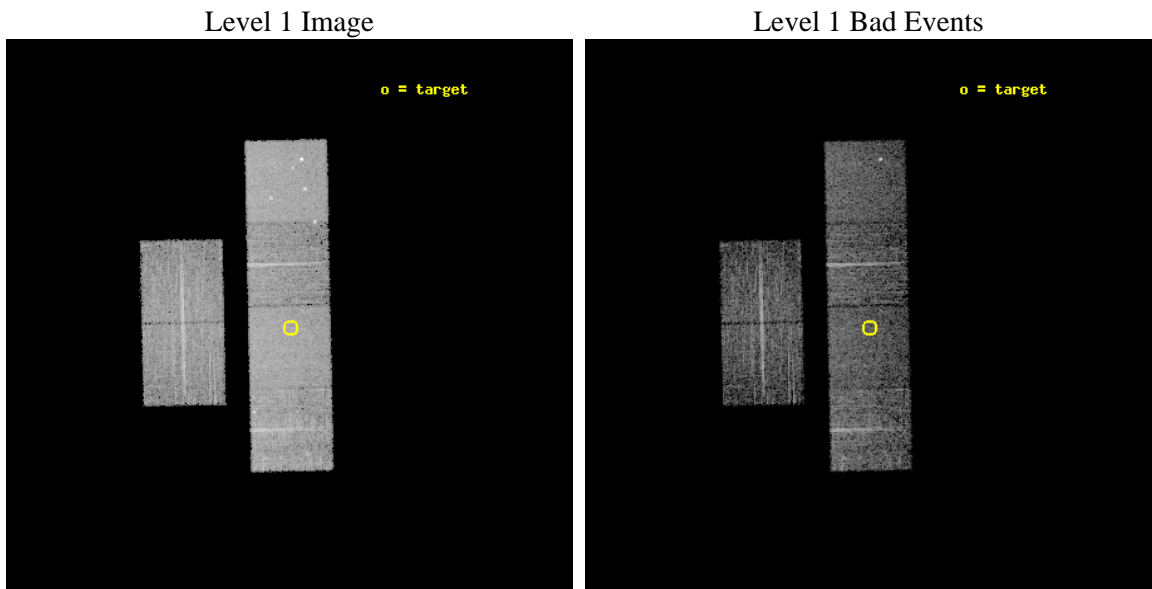
seq_num	600361	Sequence number
obs_id	4706	Observation id
title	Using the Sculptor Dwarf Spheroidal Galaxy to Constrain X-ray Binary Production in Population II	Proposal title
observer	Dr Thomas Maccarone	Principal investigator
object	SCULPTOR DWARF SPHEROIDAL	Source name
dtcycle	0	
cycle	P	events from which exps? Prim/Second/Both
ra_targ	15.039167	Observer's specified target RA [deg]
dec_targ	-33.708889	Observer's specified target Dec [deg]
ra_nom	15.041356686853	Nominal RA [deg]
dec_nom	-33.699442807342	Nominal Dec [deg]
roll_nom	88.841683081711	Nominal Roll [deg]
revision	3	Processing version of data
ontime	6153.5999770761	Sum of GTIs [s]
livetime	6075.6793889133	Livetime [s]
ontime2	6153.5999770761	Sum of GTIs [s]
ontime3	6153.5999770761	Sum of GTIs [s]
ontime5	6153.5999770761	Sum of GTIs [s]
ontime6	6153.5999770761	Sum of GTIs [s]
ontime7	6153.5999770761	Sum of GTIs [s]
ontime8	6153.5999770761	Sum of GTIs [s]
l2events	67916	Number of level 2 events



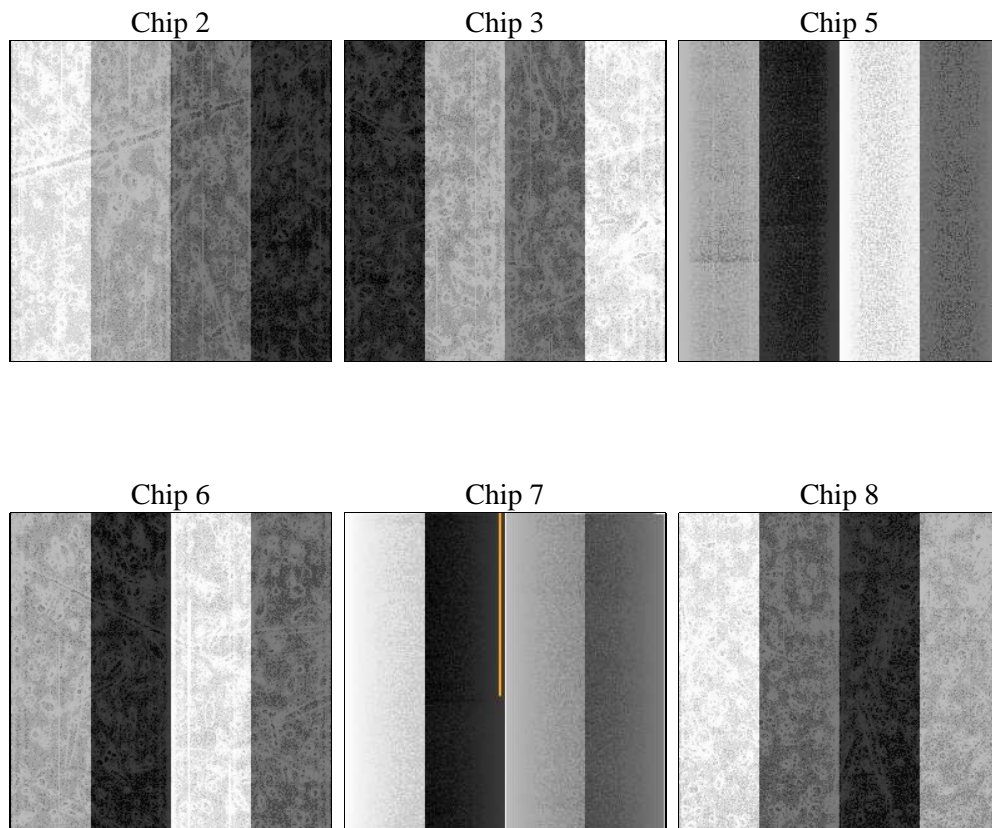
2 OBI

2.1 OBI

2.1.1 Images



2.1.2 Bias



2.1.3 Parameters

obi_num	2	Obi number	sched_exp_time	6000.000000	[s] Scheduled observation exposure time
ascdsver	8.5	Processing system revision	ontime	6153.5999770761	Sum of GTIs [s]
caldbver	4.5.4	 	ontime2	6153.5999770761	Sum of GTIs [s]
date	2012-12-06T23:07:28	Date and time of file creation	ontime3	6153.5999770761	Sum of GTIs [s]
revision	3	Processing version of data	ontime5	6153.5999770761	Sum of GTIs [s]
			ontime6	6153.5999770761	Sum of GTIs [s]
			ontime7	6153.5999770761	Sum of GTIs [s]
			ontime8	6153.5999770761	Sum of GTIs [s]
			l1events	301034	Number of level 1 events

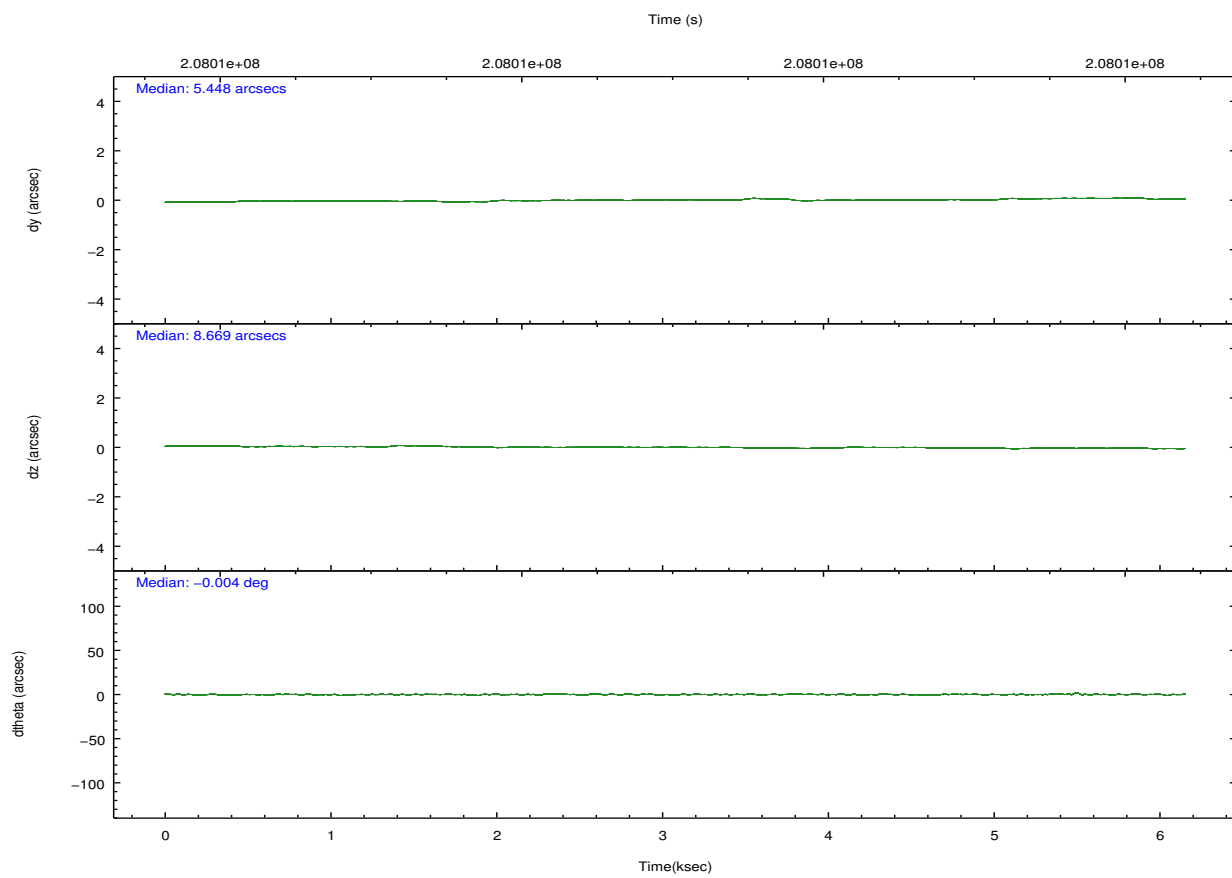
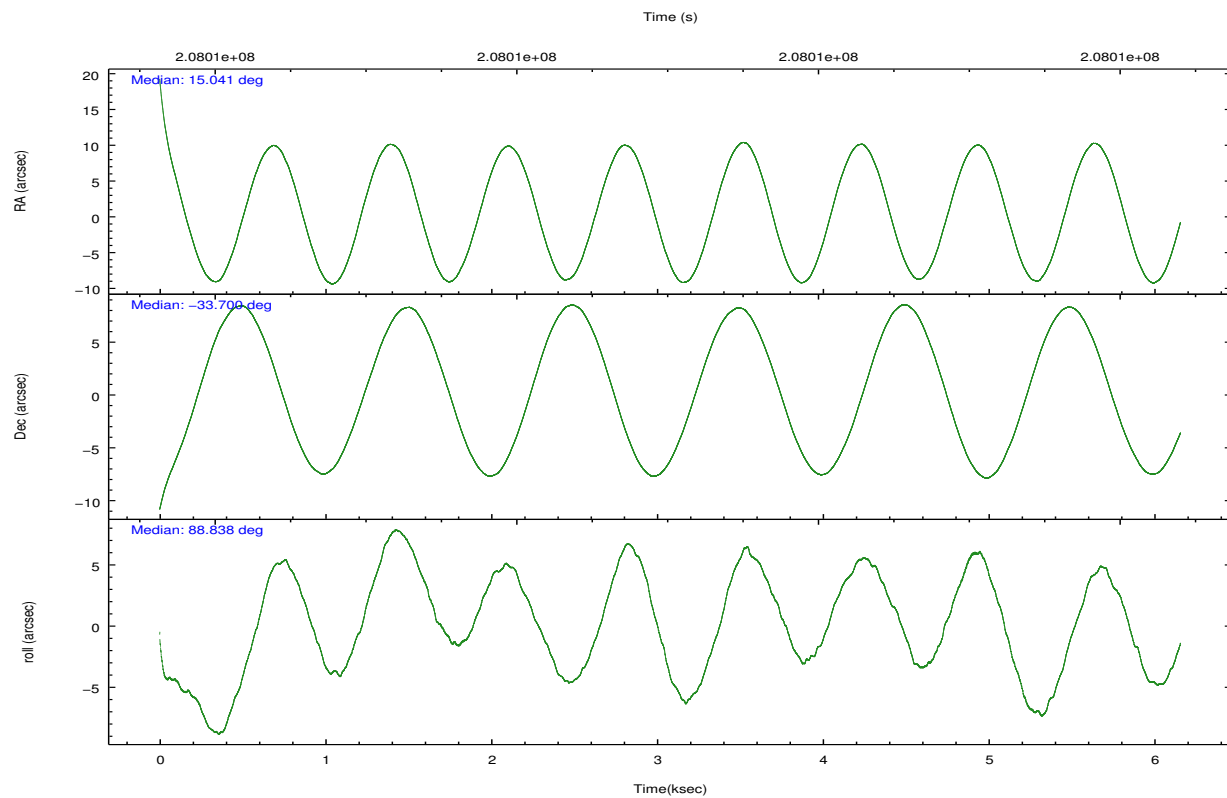
2.1.4 Events

	ccd 2	ccd 3	ccd 5	ccd 6	ccd 7	ccd 8		ccd 2	ccd 3	ccd 5	ccd 6	ccd 7	ccd 8
level 1 events	41175	40798	64683	42124	57472	54782	grade 0 events	2305	2279	3307	2138	2159	4033
rejected events	36105	35856	35314	37035	34114	43490		5%	5%	5%	5%	3%	7%
rejected %	87%	87%	54%	87%	59%	79%	grade 1 events	27	30	87	20	50	32
								0%	0%	0%	0%	0%	0%
							grade 2 events	1050	950	8995	1080	4589	2460
								2%	2%	13%	2%	7%	4%
							grade 3 events	479	505	1188	490	2145	1153
								1%	1%	1%	1%	3%	2%
							grade 4 events	475	467	1105	463	2132	1098
								1%	1%	1%	1%	3%	2%
							grade 5 events	1735	1876	4710	1927	5432	2575
								4%	4%	7%	4%	9%	4%
							grade 6 events	826	809	15277	1006	12705	2746
								2%	1%	23%	2%	22%	5%
							grade 7 events	34278	33882	30014	35000	28260	40685
								83%	83%	46%	83%	49%	74%

2.2 Compared Parameters

Parameter	Planned	Actual	Parameter	Planned	Actual
Instrument	ACIS	ACIS	Obspar format version number	7	7
Detector	ACIS-235678	ACIS-235678	Obspar file type	PREDICTED	ACTUAL
Grating	NONE	NONE	Obspar update status	NONE	UPDATED
Data mode	VFAINT	VFAINT	Number of optional ACIS chips dropped	0	0
Observation mode	POINTING	POINTING	On-chip summing requested	N	N
[deg] Pointing RA	15.057617	15.04135668685319	Subarray requested	NONE	NONE
[deg] Pointing Dec	-33.723082	-33.69944280734243	Alternating exposures requested	N	N
[deg] Pointing Roll	88.694082	88.84168308171149	[s] Primary exposure time	0.000000	3.2
[mm] SIM focus pos	-0.684267	-0.6828225247311905			
[mm] SIM defocus	0	0.001444936568705701			
[mm] SIM translation stage pos	-190.132523	-190.1400660498719			
[mm] SIM translation stage offset	0	0.00754346686406393			
[s] Observation start time (MET)	208006091.184000	208004983.04617			
Observation start date	2004-08-04T11:27:07	2004-08-04T11:09:43			
[s] Observation end time (MET)	208012091.184000	208013137.43404			
Observation end date	2004-08-04T13:07:07	2004-08-04T13:25:37			
Read mode	TIMED	TIMED			

2.3 Aspect

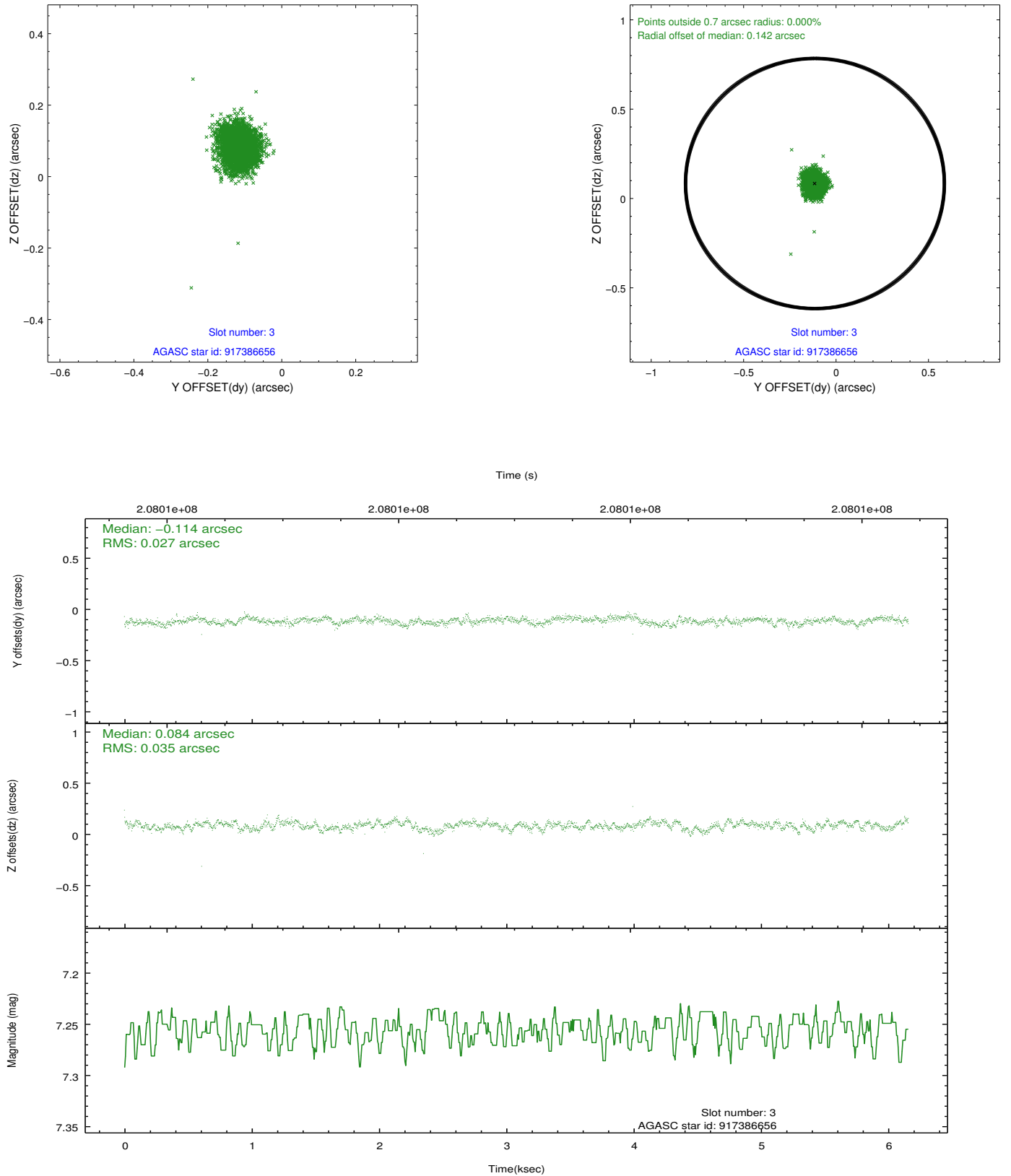


Slot Statistics

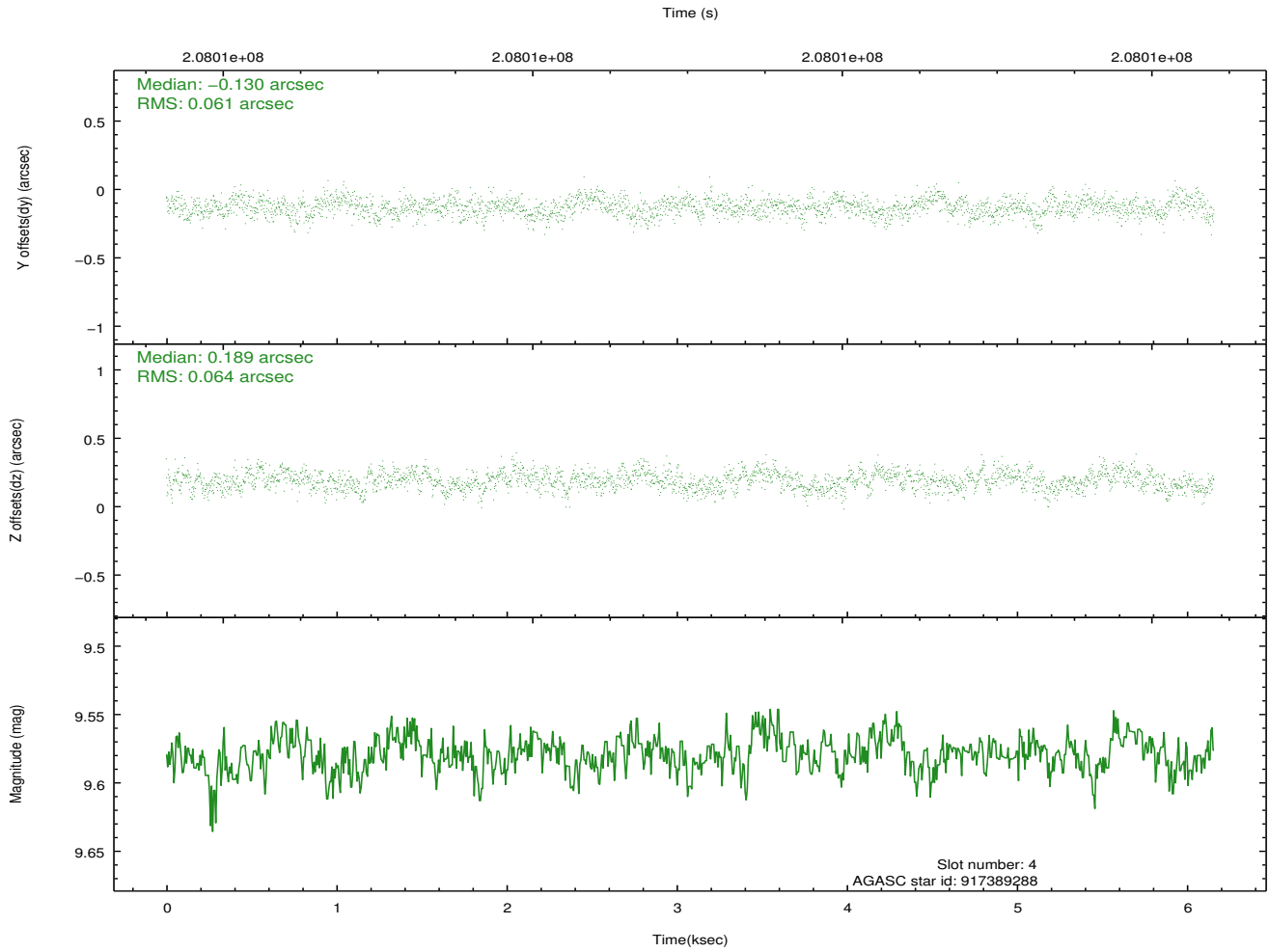
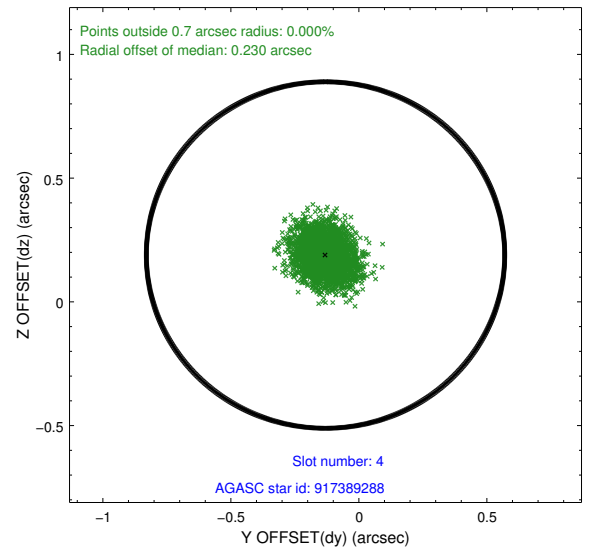
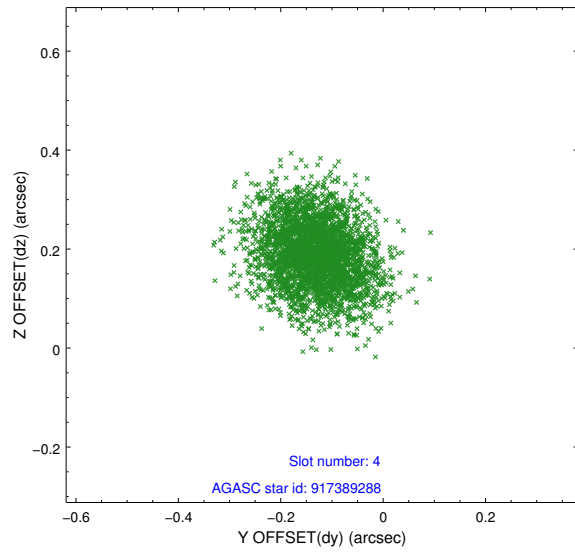
slot	status	id	mag	n_pts	med_dy	med_dz	dr1	dr2	ra	dec	mean_y	mean_z
0	FID	ACIS-S-2	7.10	1502	-0.044	-0.046	0.007	0.011	0.000000	0.000000	-758.21	-1729.92
1	FID	ACIS-S-4	7.21	1502	0.086	0.034	0.006	0.010	0.000000	0.000000	2154.77	177.63
2	FID	ACIS-S-5	7.23	1502	-0.073	0.021	0.007	0.011	0.000000	0.000000	-1809.84	172.41
3	GUIDE	917386656	7.26	3005	-0.114	0.084	0.046	0.074	15.342124	-33.359890	1325.93	-825.50
4	GUIDE	917389288	9.58	3004	-0.130	0.189	0.094	0.152	15.394706	-33.185862	1955.73	-971.42
5	GUIDE	917390768	9.88	3003	-0.017	-0.067	0.135	0.217	14.870561	-33.104152	2215.28	614.36
6	GUIDE	917650528	8.73	3003	0.102	-0.402	0.086	0.135	14.274554	-33.869842	-589.30	2327.43
7	GUIDE	917642024	8.88	3004	0.169	0.193	0.067	0.108	15.645887	-34.369984	-2292.80	-1800.63

2.4 Star Slots

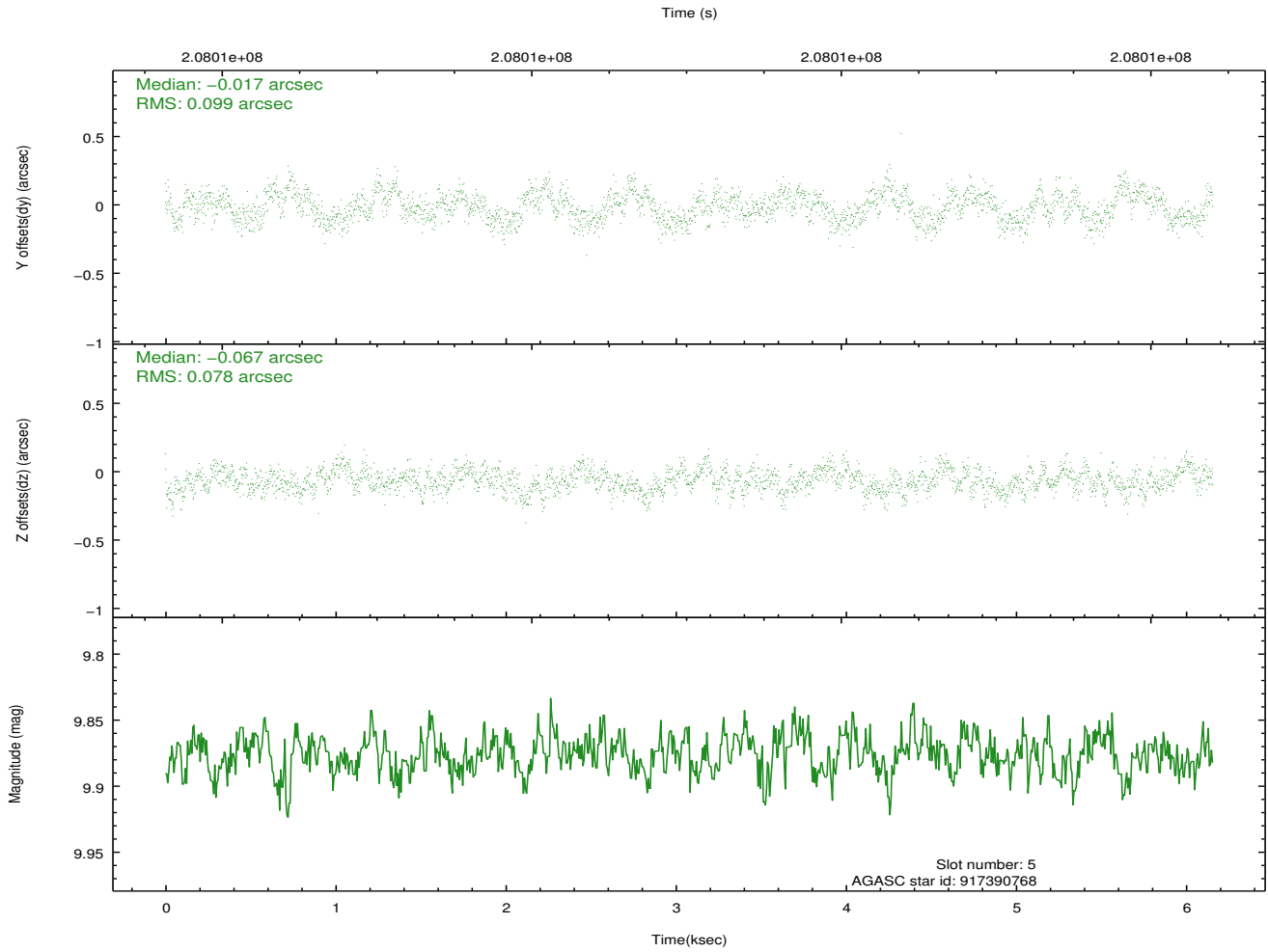
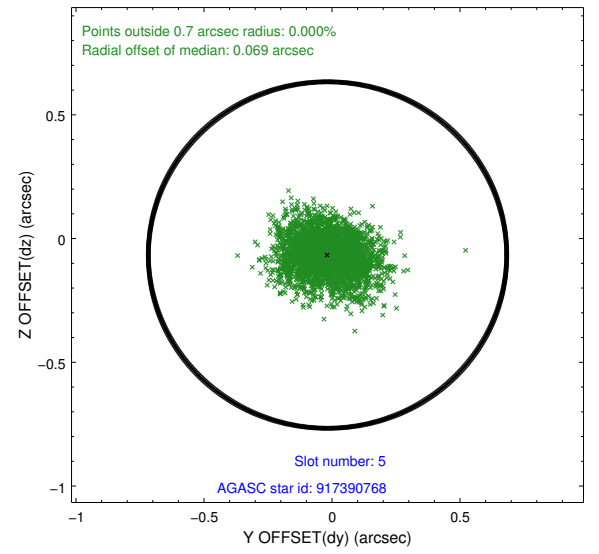
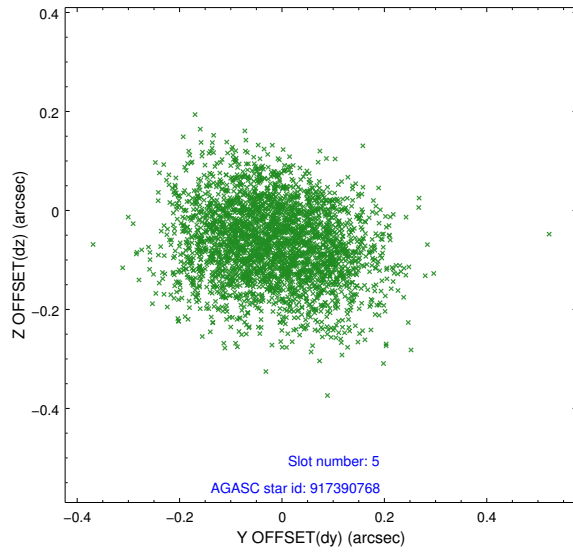
2.4.1 Slot 3



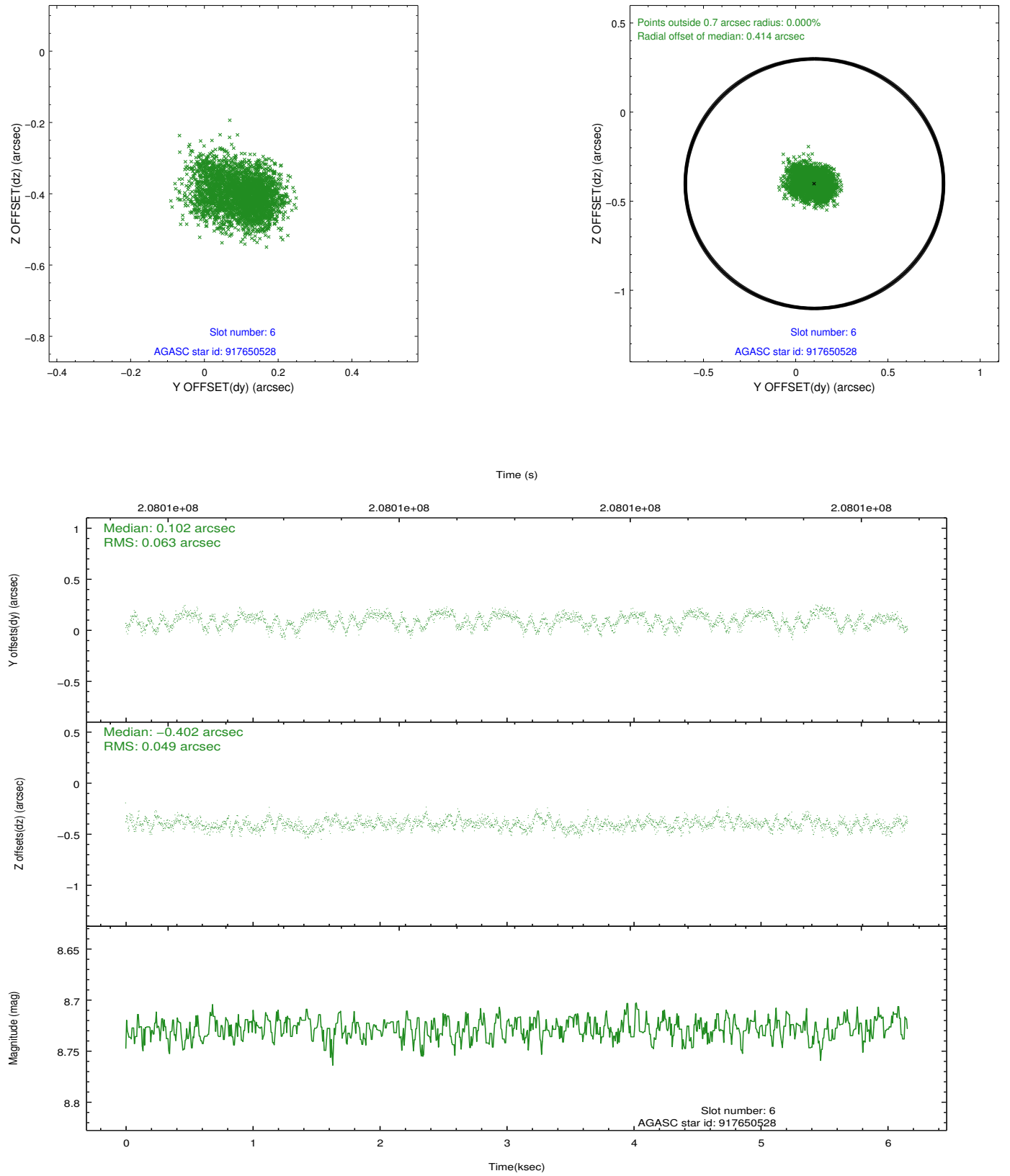
2.4.2 Slot 4



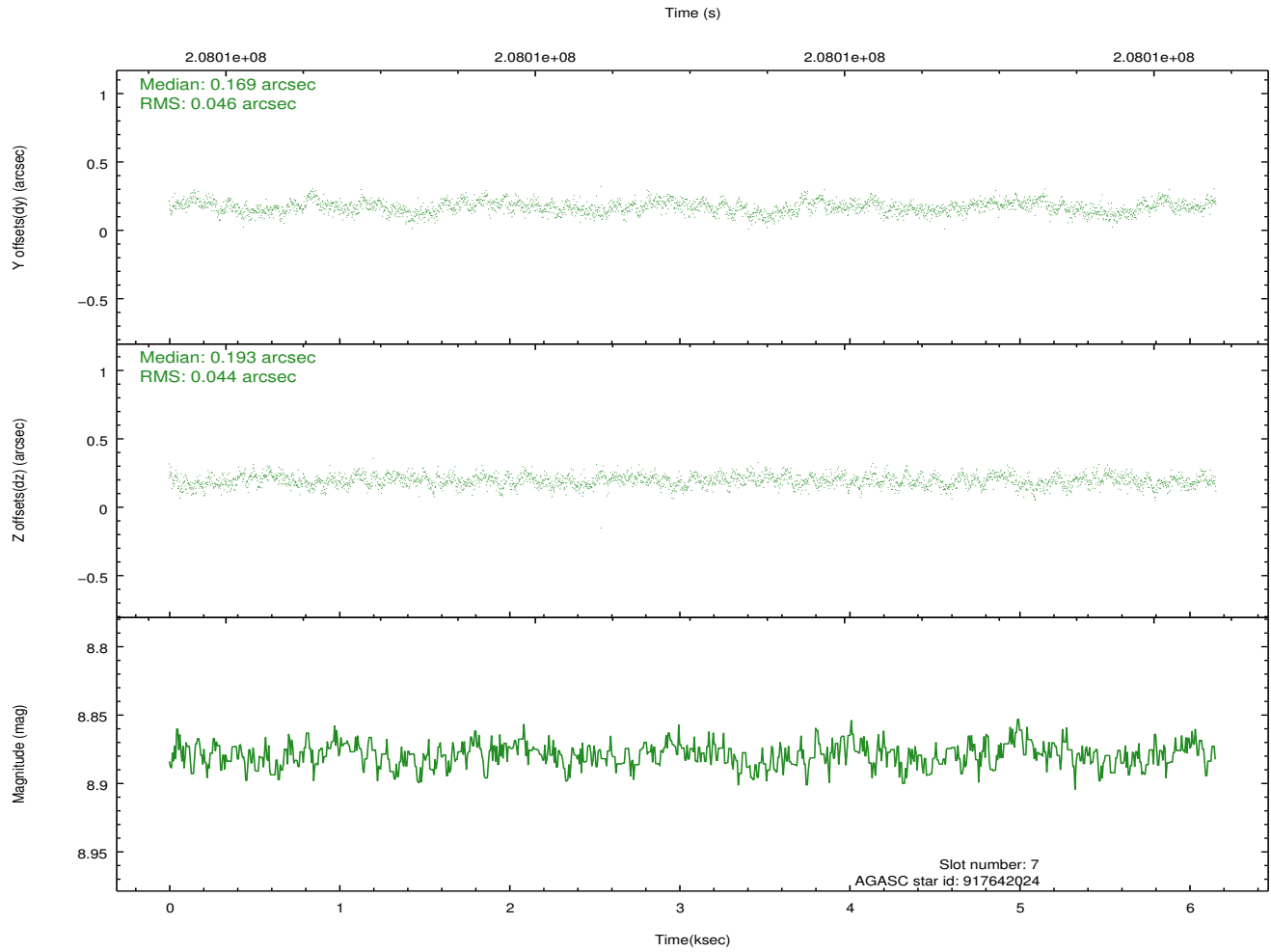
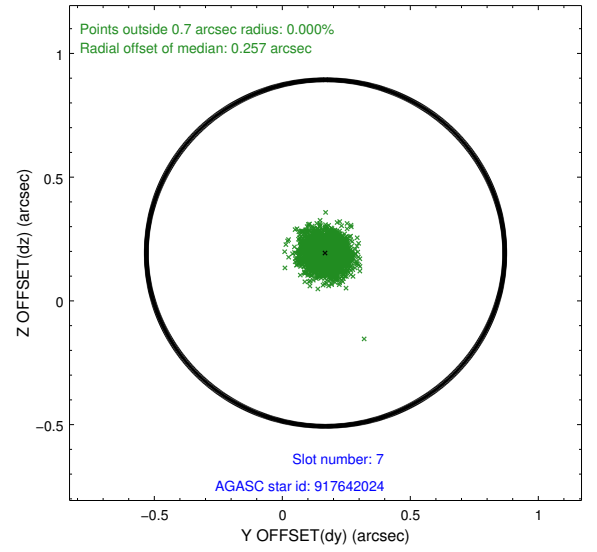
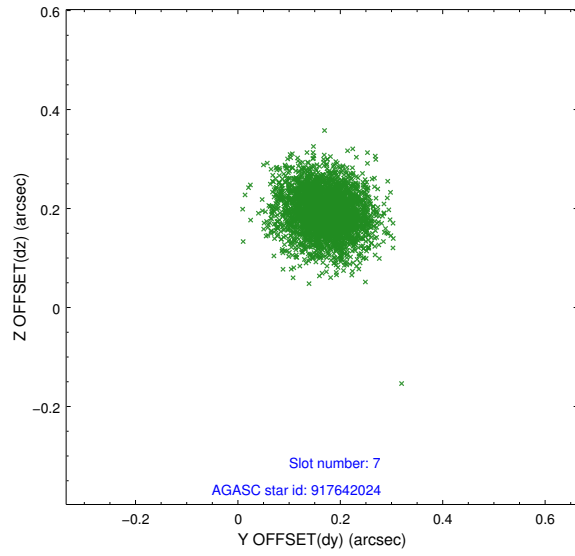
2.4.3 Slot 5



2.4.4 Slot 6

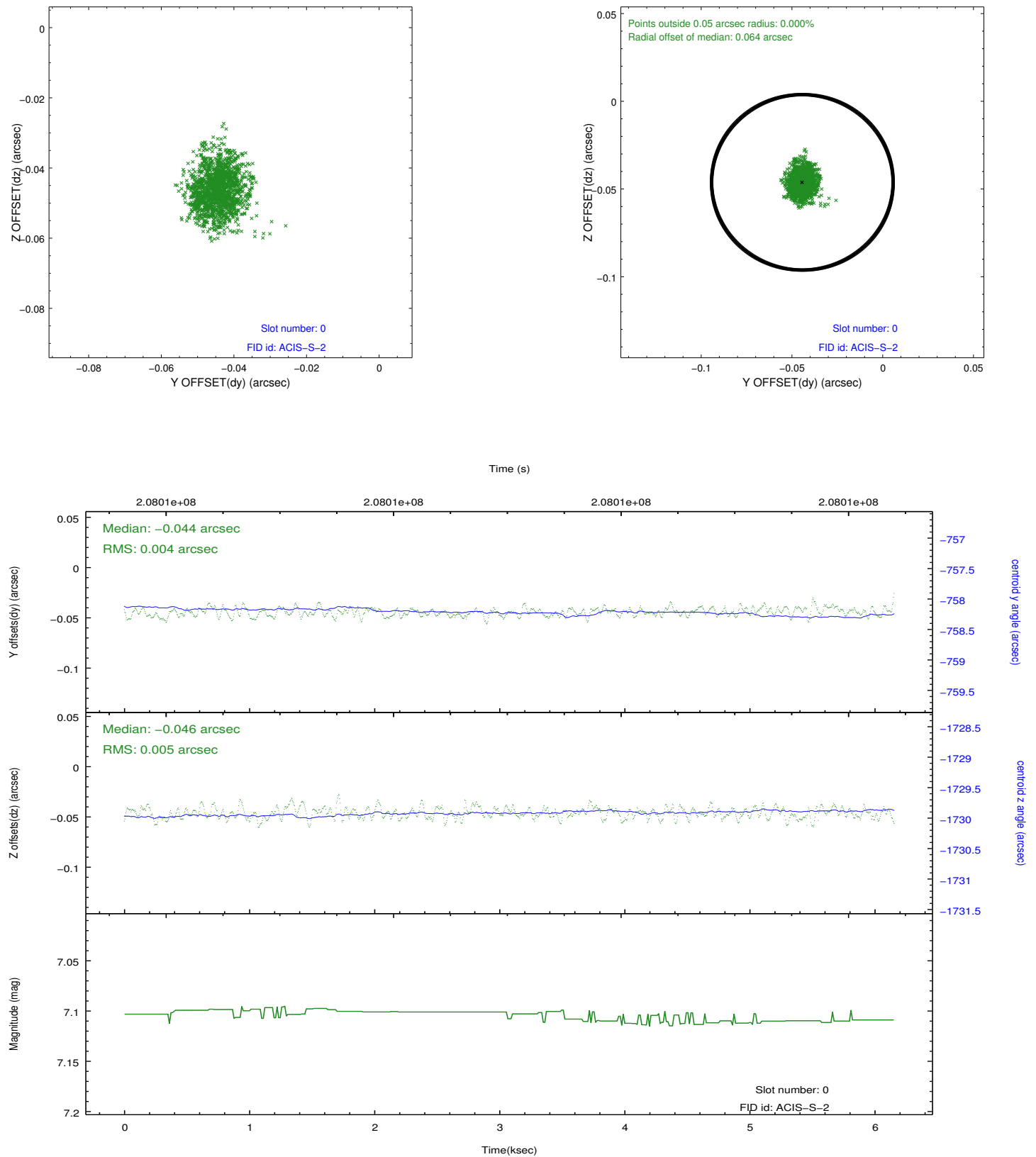


2.4.5 Slot 7

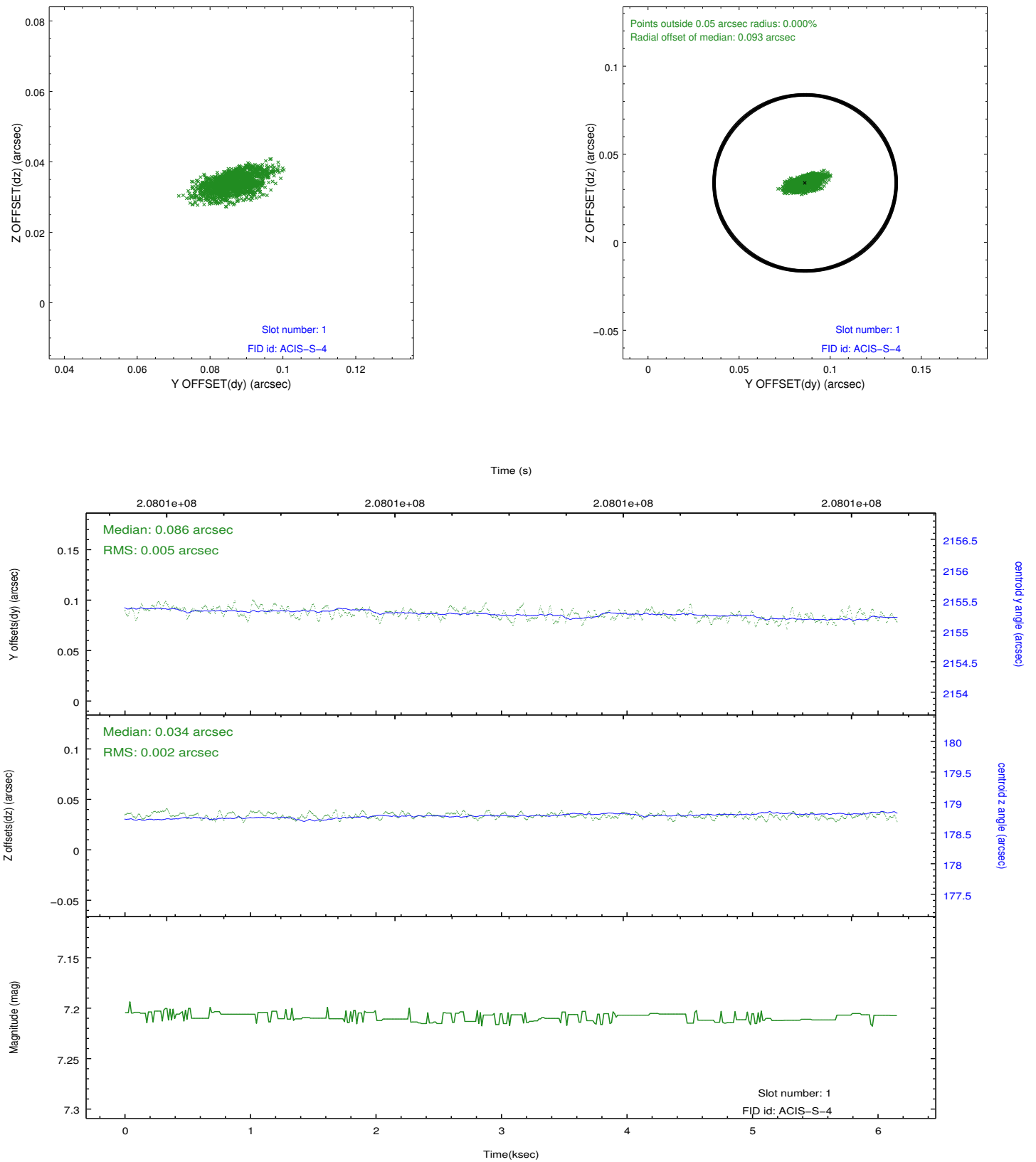


2.5 FID Slots

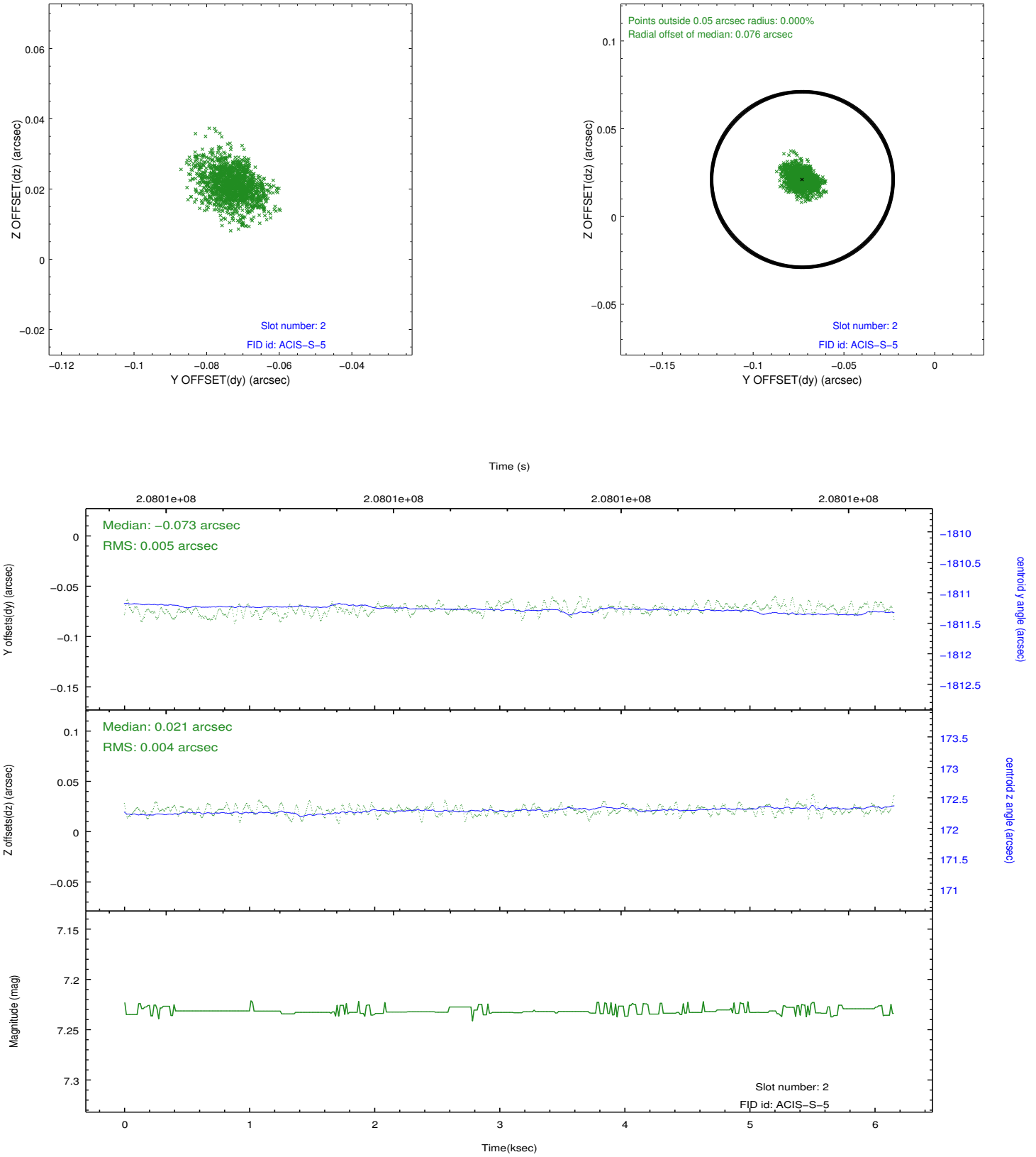
2.5.1 Slot 0



2.5.2 Slot 1



2.5.3 Slot 2



A Summary

A.1 Status

V&V Scientist	Jen Lauer
V&V Date (YYYY-MM-DD)	2012.12.21
V&V Edition	1
V&V Disposition and Status	OK
V&V Charge Time	6.153

A.2 Comments

Monitor constraint met. Joint Proposal: NOAO