

V&V Reference Report

L2 ASCDS Version : 7.6.7.2

Observation 4706 - L2 Version 001
Chandra X-Ray Center

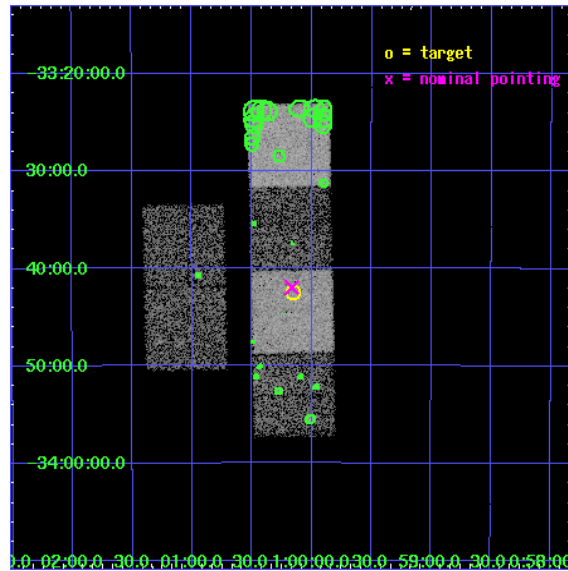
L2 Processing Date : Apr 26 2006

Contents

1	Front	2
2	OBI	3
2.1	OBI	3
2.1.1	Images	3
2.1.2	Bias	3
2.1.3	Parameters	4
2.1.4	Events	4
2.2	Compared Parameters	5
2.3	Aspect	6
2.4	Star Slots	9
2.4.1	Slot 3	9
2.4.2	Slot 4	10
2.4.3	Slot 5	11
2.4.4	Slot 6	12
2.4.5	Slot 7	13
2.5	FID Slots	14
2.5.1	Slot 0	14
2.5.2	Slot 1	15
2.5.3	Slot 2	16
3	Point Sources	17
A	Summary	18
A.1	Status	18
A.2	Comments	18

1 Front

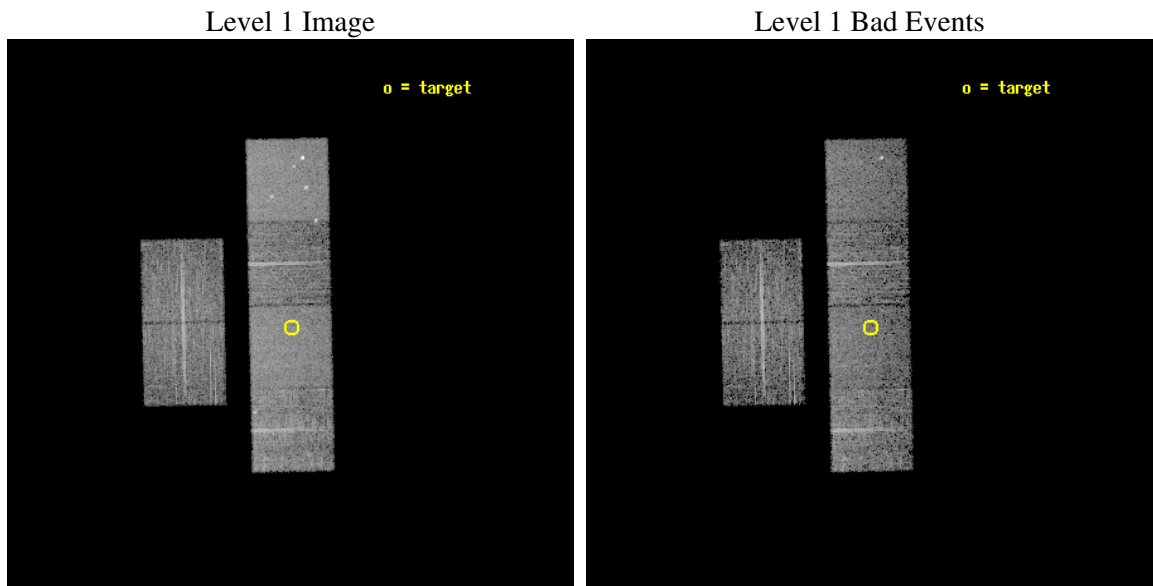
seq_num	600361
obs_id	4706
title	Using the Sculptor Dwarf Spheroidal Galaxy to Constrain X-ray Binary Production in Population II
observer	Dr. Thomas Maccarone
object	SCULPTOR DWARF SPHEROIDAL
dtcycle	0
cycle	P
ra_targ	15.039167
dec_targ	-33.708889
ra_nom	15.041355920655
dec_nom	-33.699470577806
roll_nom	88.841682649811
revision	2
ontime	6153.5999770761
livetime	6075.6793889133
ontime2	6153.5999770761
ontime3	6153.5999770761
ontime5	6153.5999770761
ontime6	6153.5999770761
ontime7	6153.5999770761
ontime8	6153.5999770761
l2events	65153



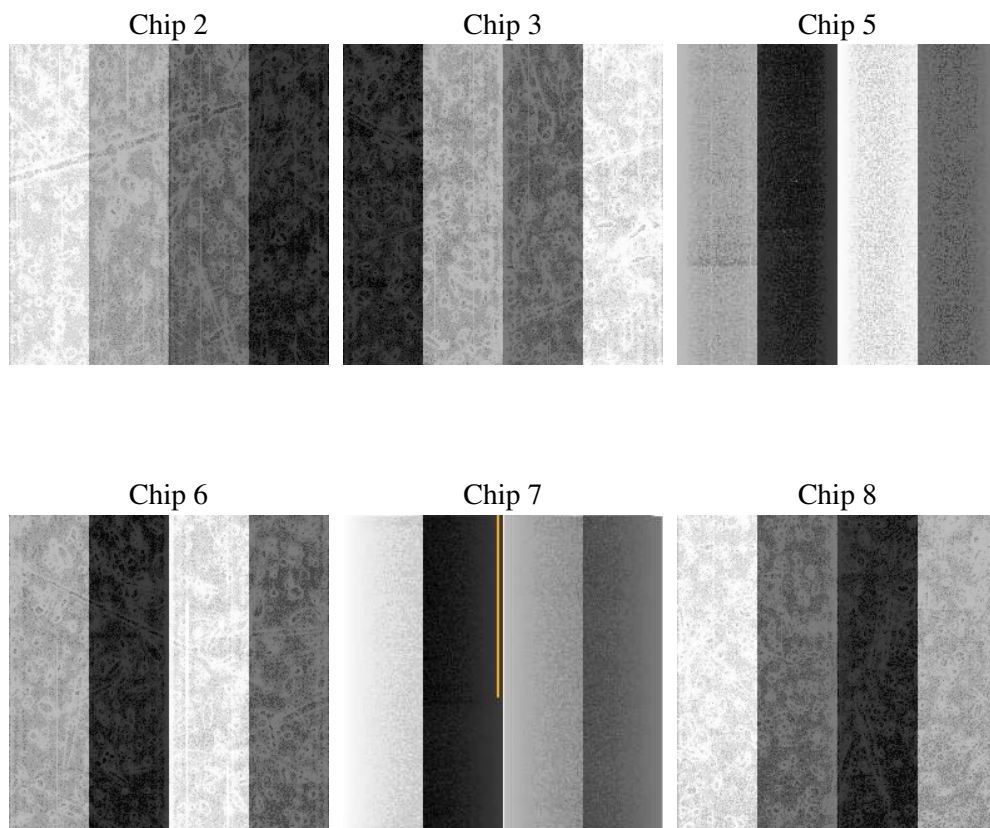
2 OBI

2.1 OBI

2.1.1 Images



2.1.2 Bias



2.1.3 Parameters

obi_num	2
ascdsver	7.6.7.2
caldsver	3.2.1
date	2006-04-26T11:51:25
revision	2

sched_exp_time	6000.000000
ontime	6255.1472982466
ontime2	6255.1472982466
ontime3	6258.3882984519
ontime5	6255.1472982466
ontime6	6258.3883183599
ontime7	6255.1472982466
ontime8	6258.3882984519
l1events	301034

2.1.4 Events

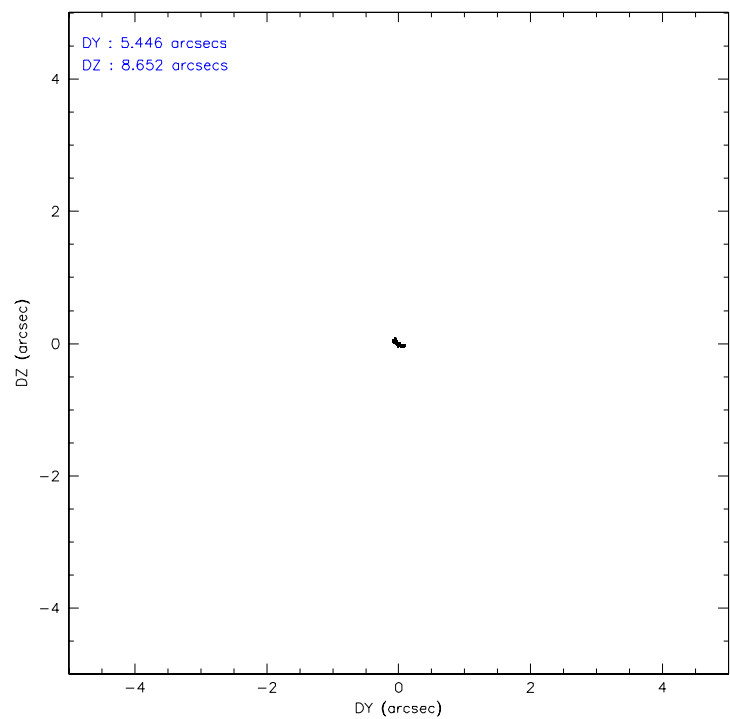
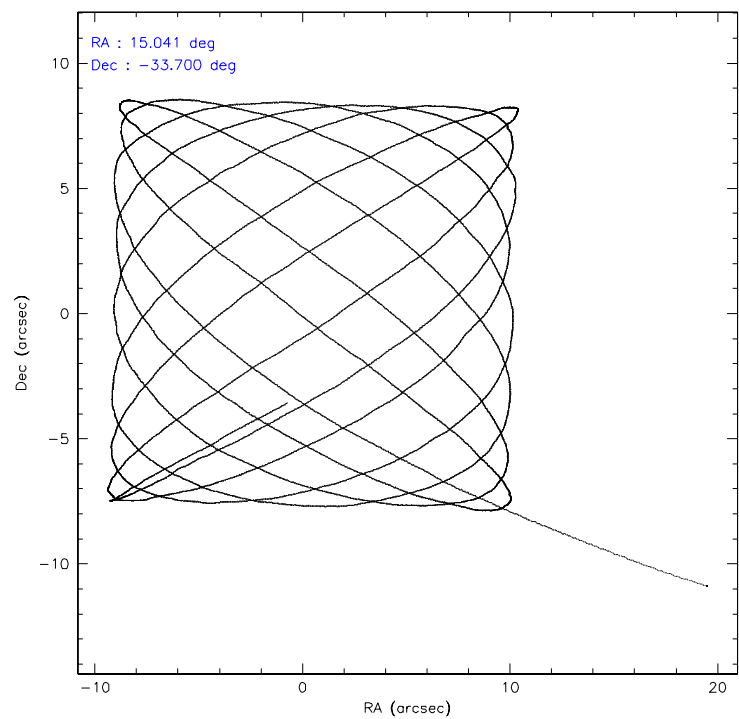
	ccd 2	ccd 3	ccd 5	ccd 6	ccd 7	ccd 8
level 1 events	41175	40798	64683	42124	57472	54782
rejected events	36107	35858	36254	37038	35984	43492
rejected %	87%	87%	56%	87%	62%	79%

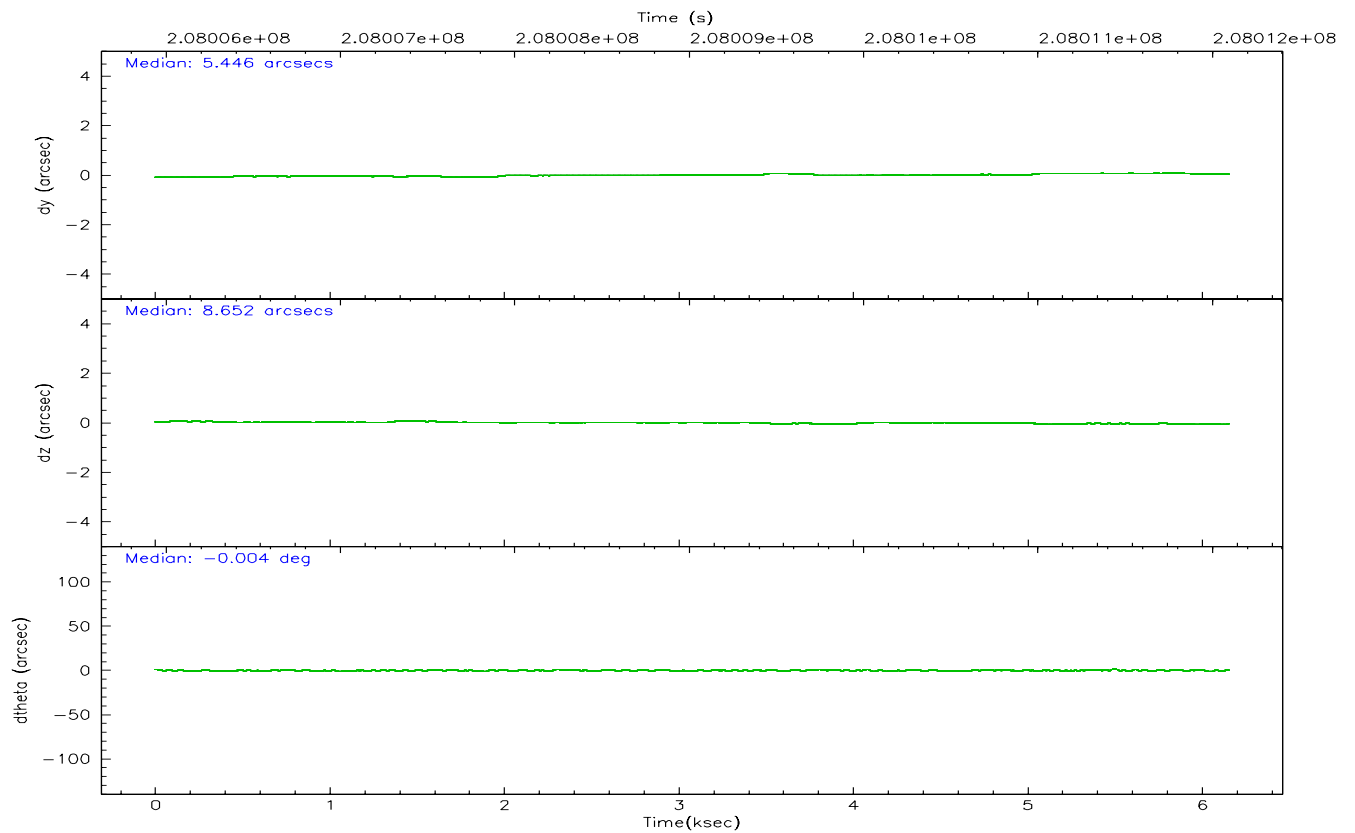
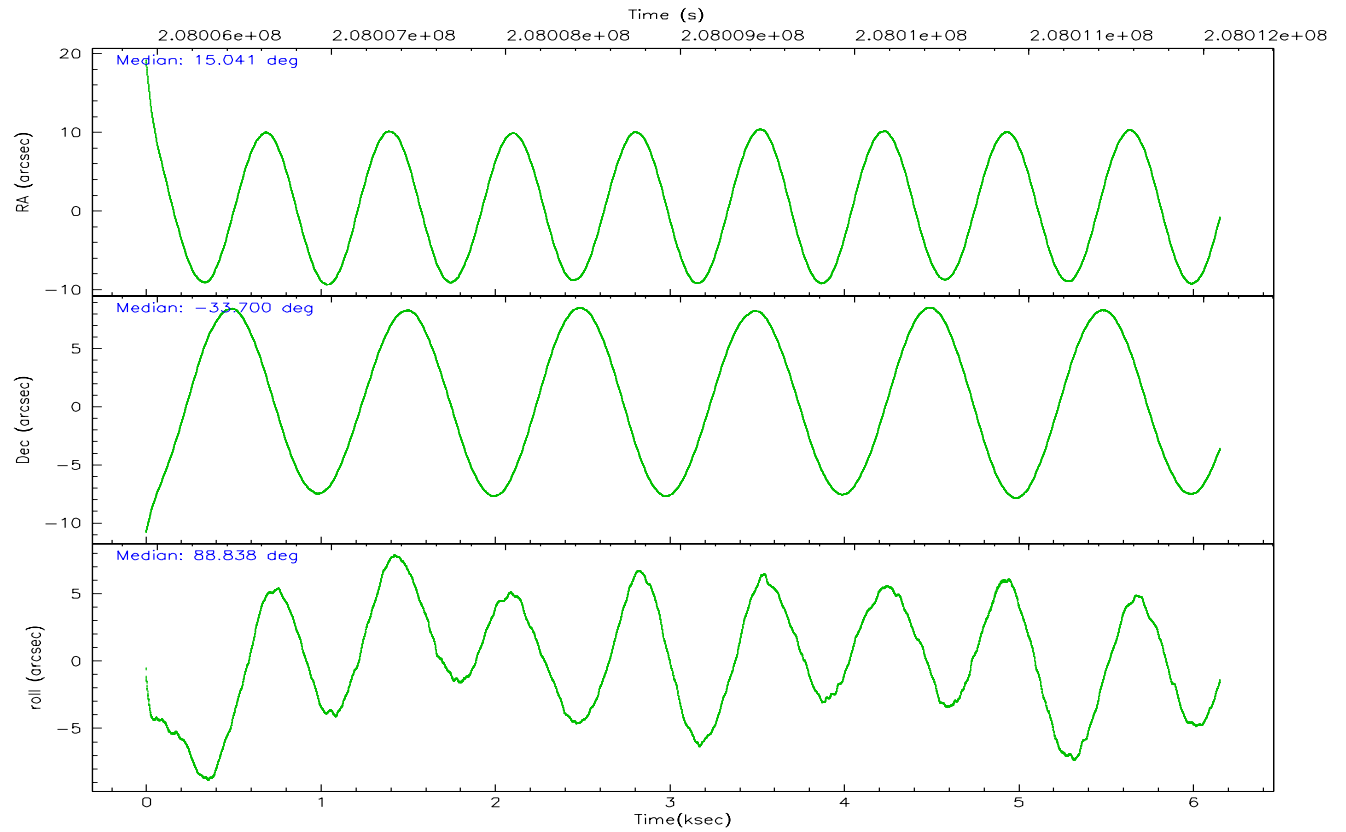
	ccd 2	ccd 3	ccd 5	ccd 6	ccd 7	ccd 8
grade 0 events	2305	2279	2664	2138	1241	4033
	5%	5%	4%	5%	2%	7%
grade 1 events	27	30	64	20	31	32
	0%	0%	0%	0%	0%	0%
grade 2 events	1050	950	8980	1080	5323	2460
	2%	2%	13%	2%	9%	4%
grade 3 events	479	505	663	490	1086	1153
	1%	1%	1%	1%	1%	2%
grade 4 events	475	467	596	463	1089	1098
	1%	1%	0%	1%	1%	2%
grade 5 events	1735	1876	3144	1927	3699	2575
	4%	4%	4%	4%	6%	4%
grade 6 events	826	809	16024	1006	13108	2746
	2%	1%	24%	2%	22%	5%
grade 7 events	34278	33882	32548	35000	31895	40685
	83%	83%	50%	83%	55%	74%

2.2 Compared Parameters

Parameter	Planned	Actual	Parameter	Planned	Actual
Instrument	ACIS	ACIS	Obspar format version number	6	6
Detector	ACIS-235678	ACIS-235678	Obspar file type	PREDICTED	ACTUAL
Grating	NONE	NONE	Obspar update status	NONE	UPDATED
Data mode	VFAINT	VFAINT	On-chip summing requested	N	N
Observation mode	POINTING	POINTING	Subarray requested	NONE	NONE
Pointing RA	15.057617	15.04135592065494	Alternating exposures requested	N	N
Pointing Dec	-33.723082	-33.69947057780572	Primary exposure time	0.000000	3.2
Pointing Roll	88.694082	88.84168264981061			
SIM focus pos (mm)	-0.684267	-0.6828225247311905			
SIM defocus (mm)	0	0.001444936568705701			
SIM translation stage pos (mm)	-190.132523	-190.1400660498719			
SIM translation stage offset (mm)	0	0.00754346686406393			
Observation start time	208006091.184000	208004983.04617			
Observation start date	2004-08-04T11:27:07	2004-08-04T11:09:43			
Observation end time	208012091.184000	208013137.43404			
Observation end date	2004-08-04T13:07:07	2004-08-04T13:25:37			
Read mode	TIMED	TIMED			

2.3 Aspect



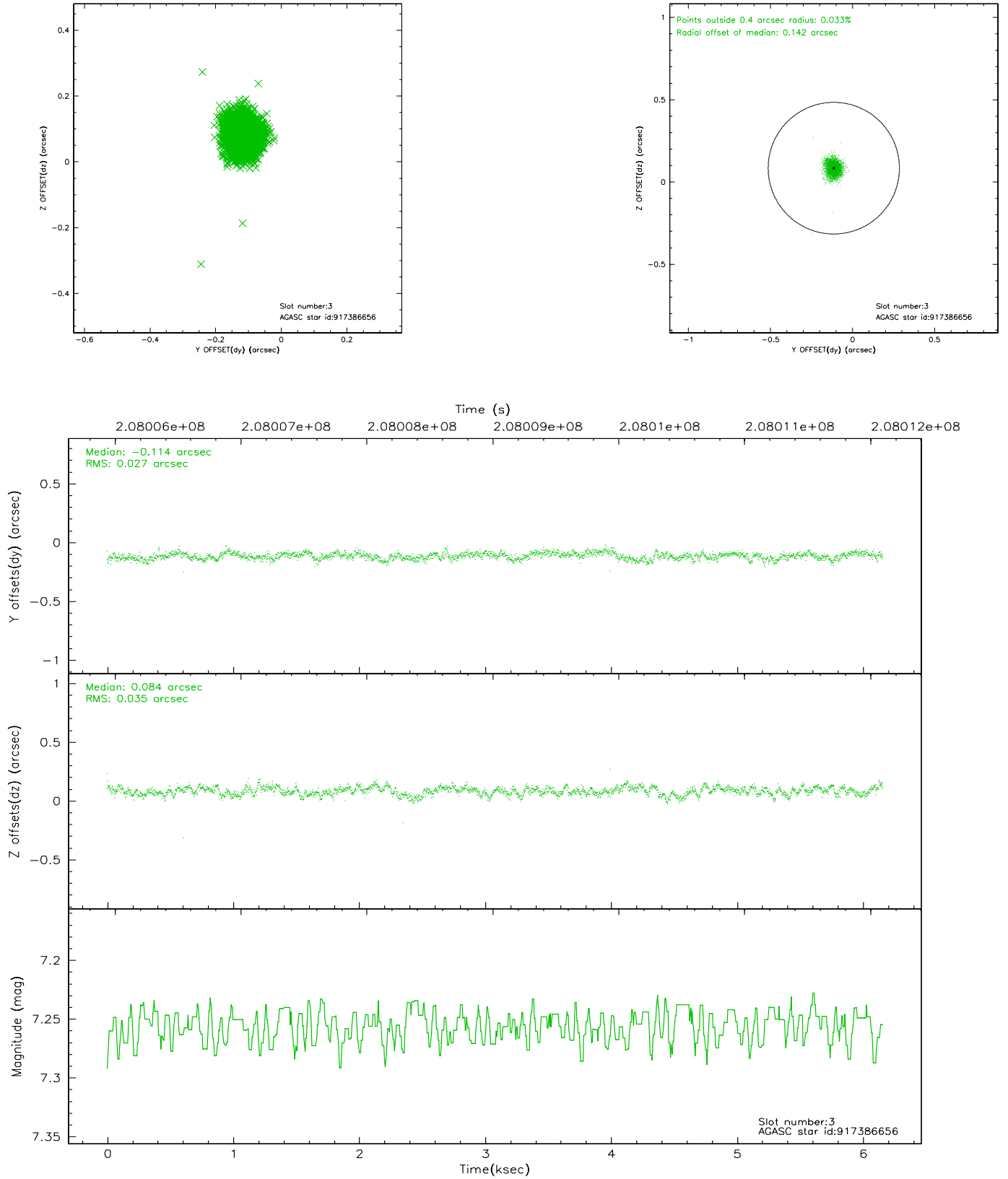


Slot Statistics

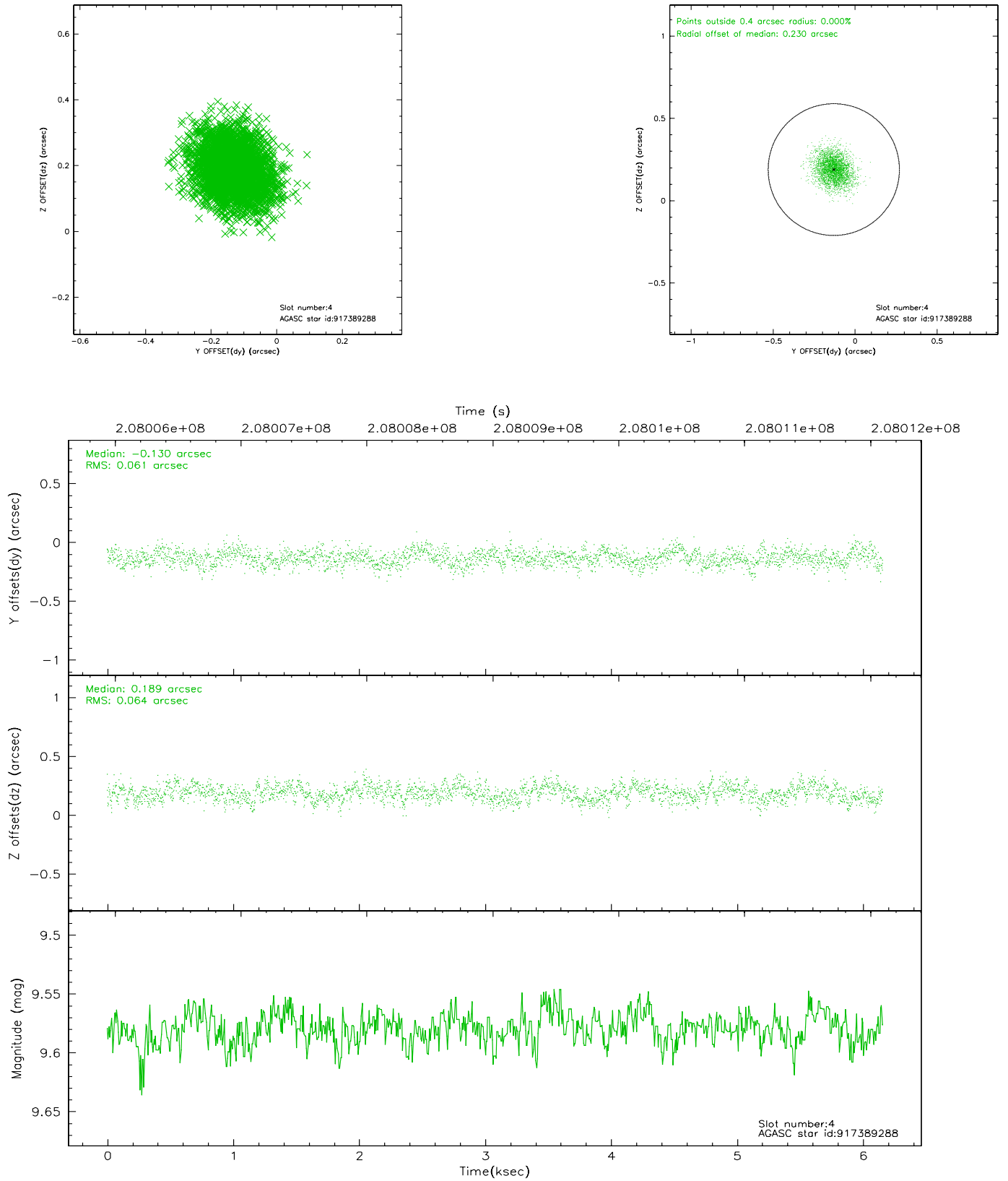
slot	status	id	mag	n_pts	med_dy	med_dz	dr1	dr2	ra	dec	mean_y	mean_z
0	FID	ACIS-S-2	7.10	1502	-0.033	-0.023	0.007	0.011	0.000000	0.000000	-758.20	-1729.88
1	FID	ACIS-S-4	7.21	1502	0.044	0.022	0.004	0.008	0.000000	0.000000	2154.73	177.64
2	FID	ACIS-S-5	7.23	1502	-0.042	0.010	0.006	0.010	0.000000	0.000000	-1809.80	172.42
3	GUIDE	917386656	7.26	3005	-0.114	0.084	0.046	0.074	15.342124	-33.359890	1325.93	-825.50
4	GUIDE	917389288	9.58	3004	-0.130	0.189	0.094	0.152	15.394706	-33.185862	1955.73	-971.42
5	GUIDE	917390768	9.88	3003	-0.017	-0.067	0.135	0.217	14.870561	-33.104152	2215.28	614.36
6	GUIDE	917650528	8.73	3003	0.102	-0.402	0.086	0.135	14.274554	-33.869842	-589.30	2327.43
7	GUIDE	917642024	8.88	3004	0.169	0.193	0.067	0.108	15.645887	-34.369984	-2292.80	-1800.63

2.4 Star Slots

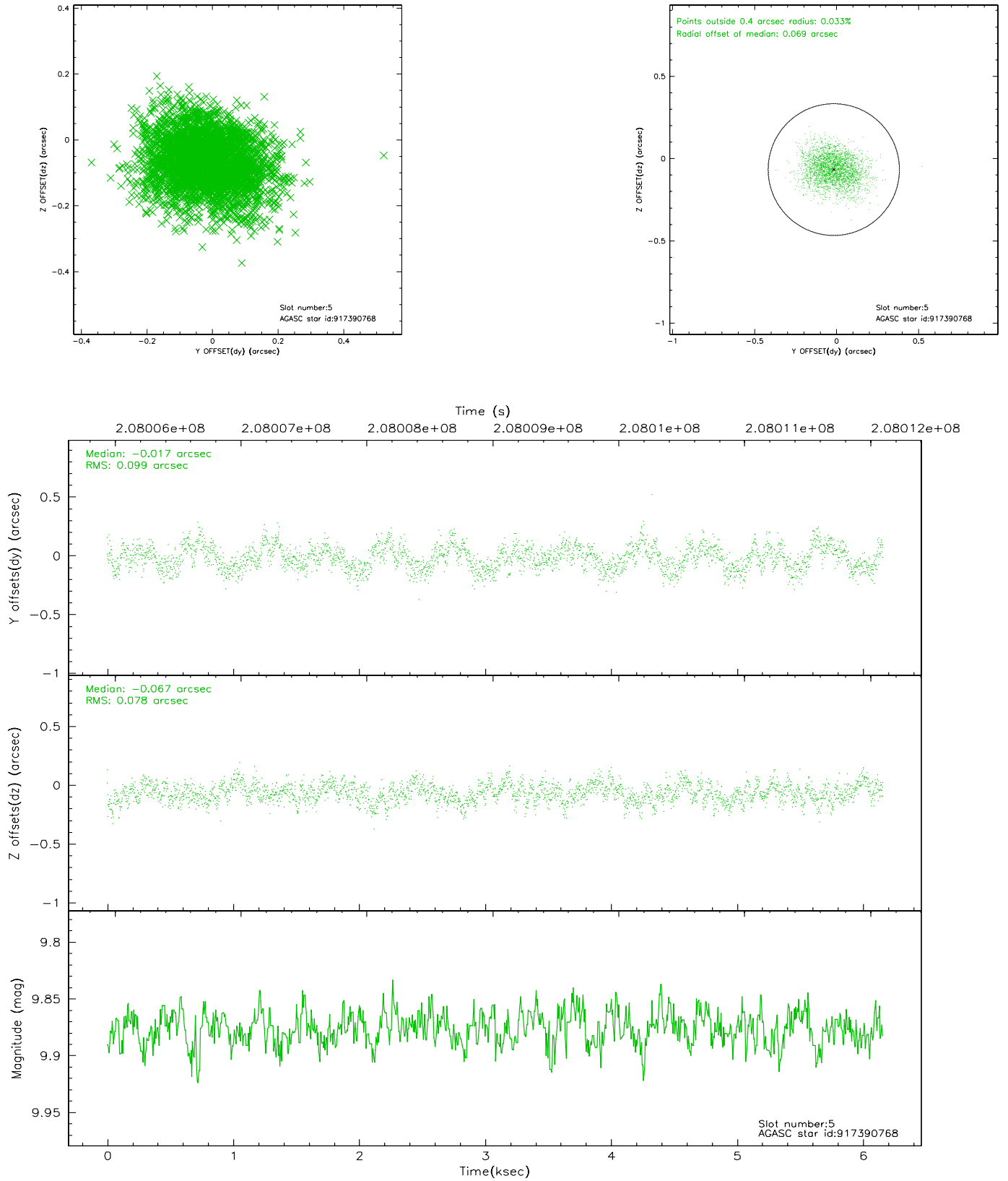
2.4.1 Slot 3



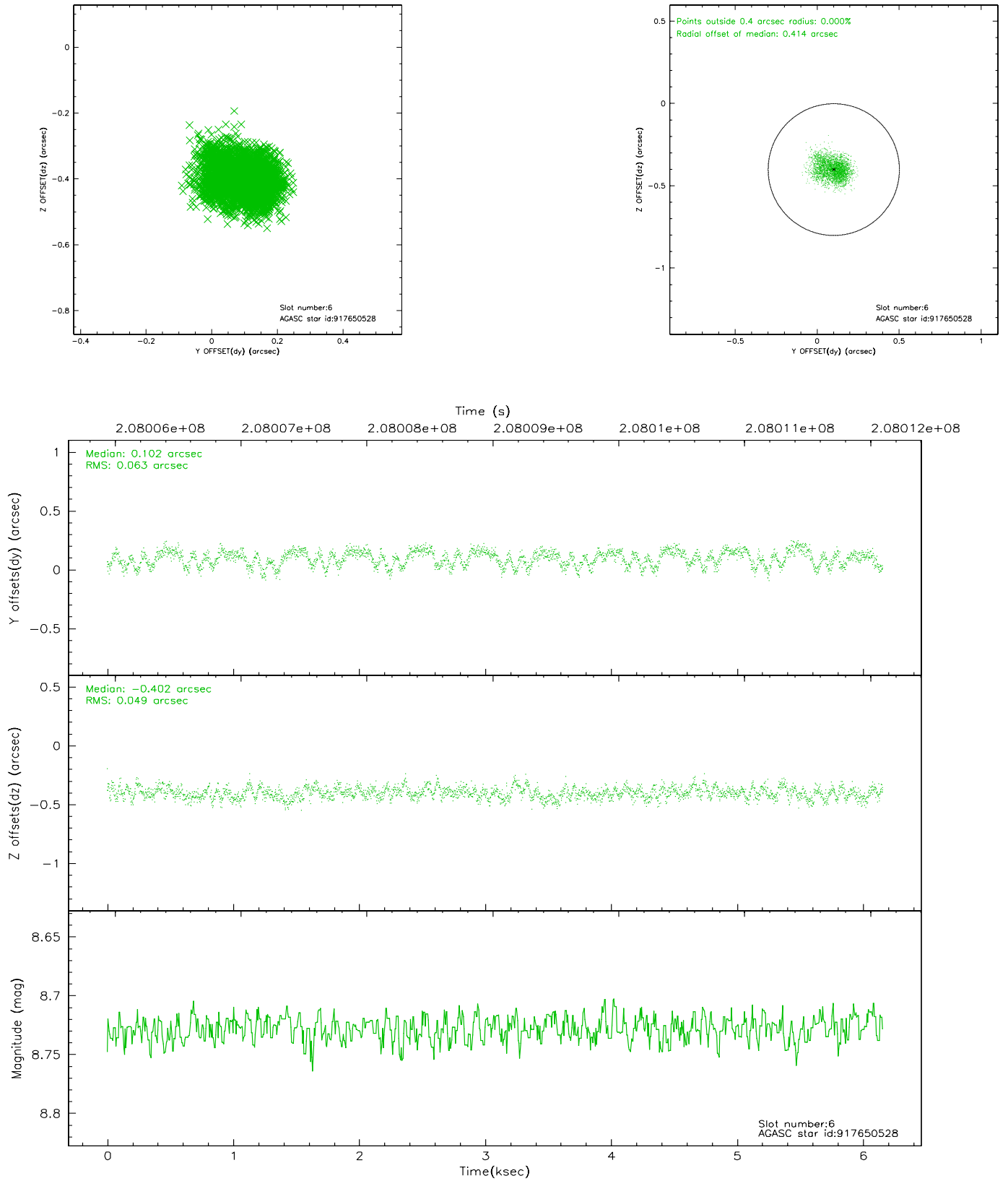
2.4.2 Slot 4



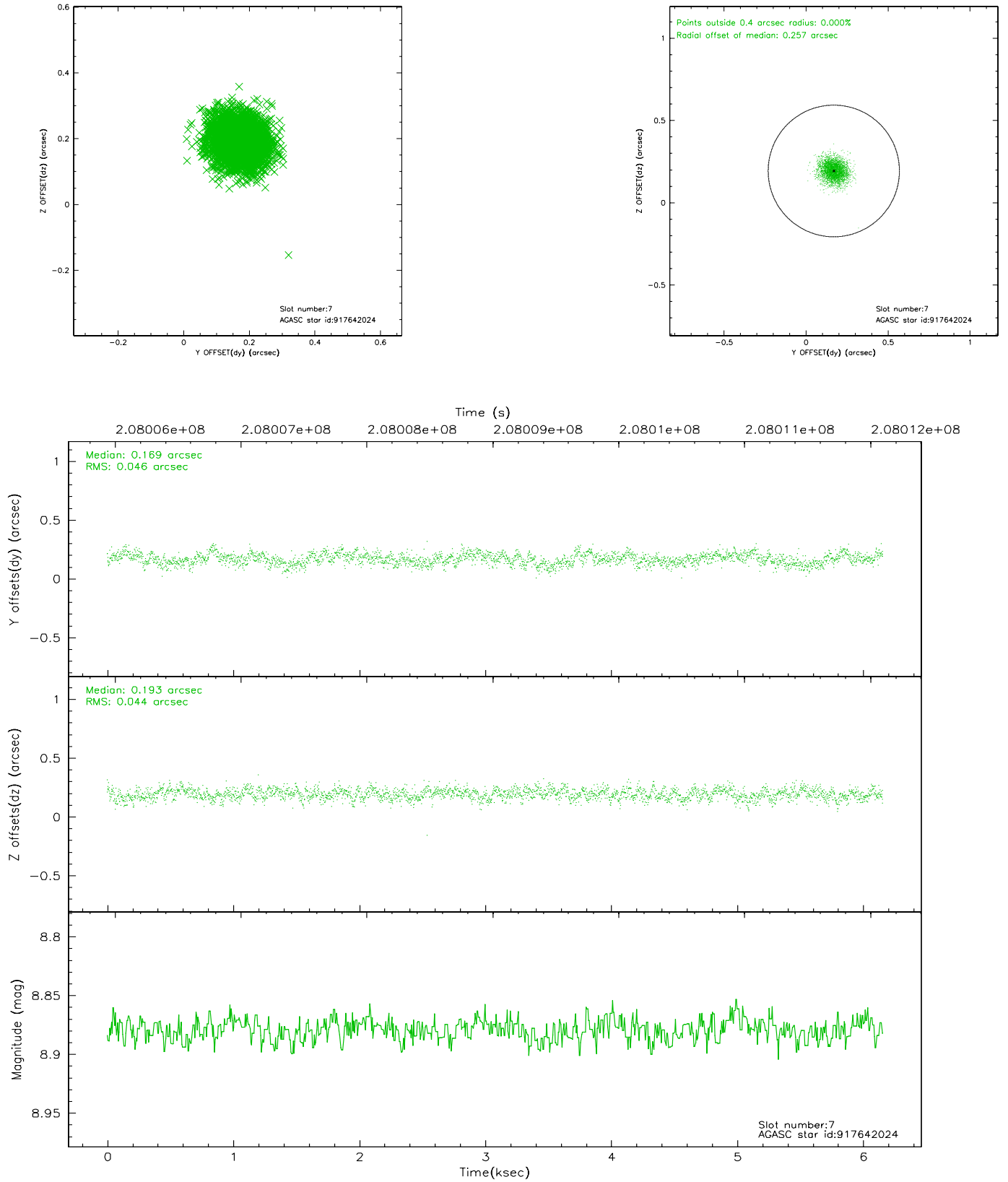
2.4.3 Slot 5



2.4.4 Slot 6

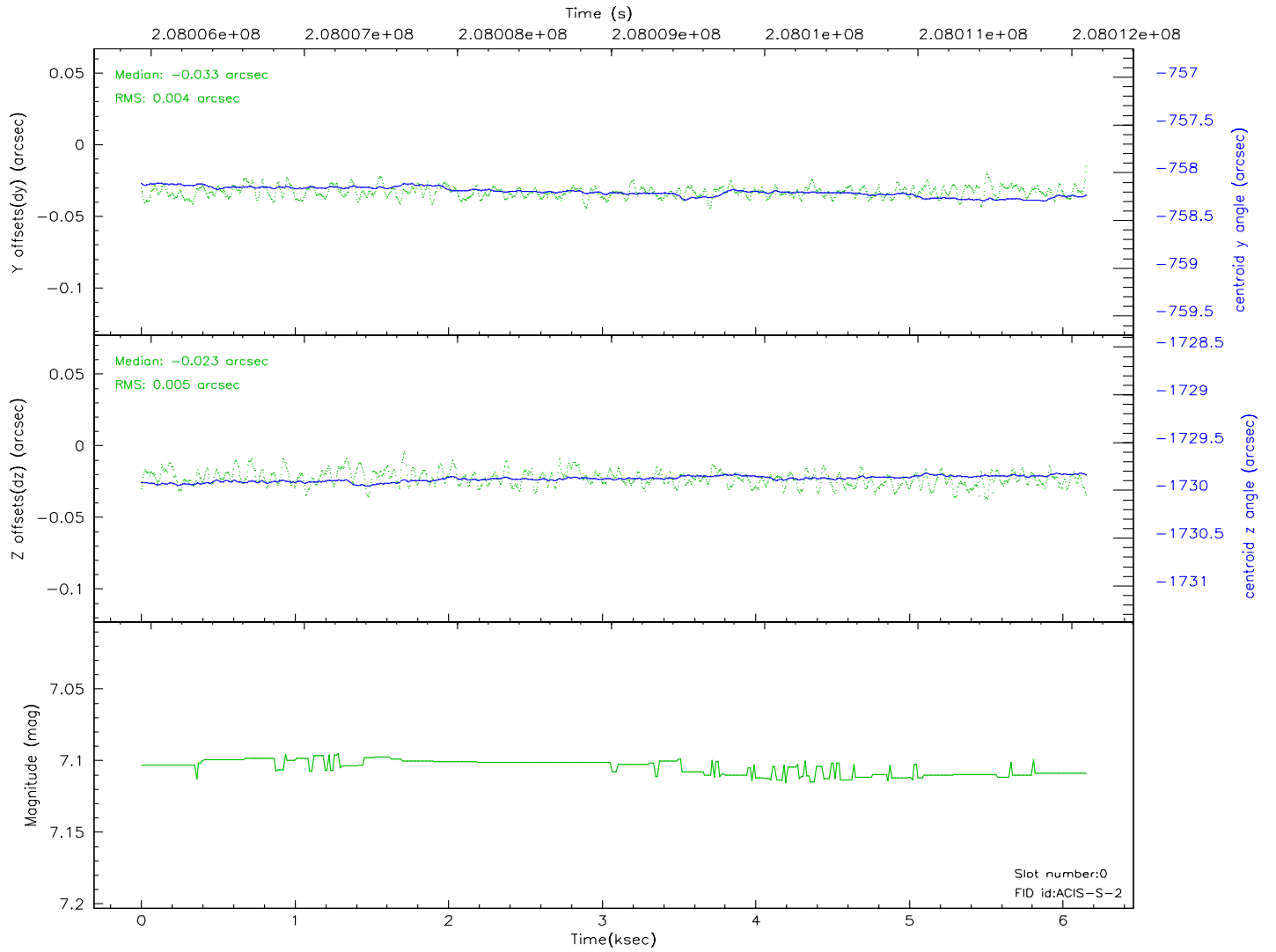
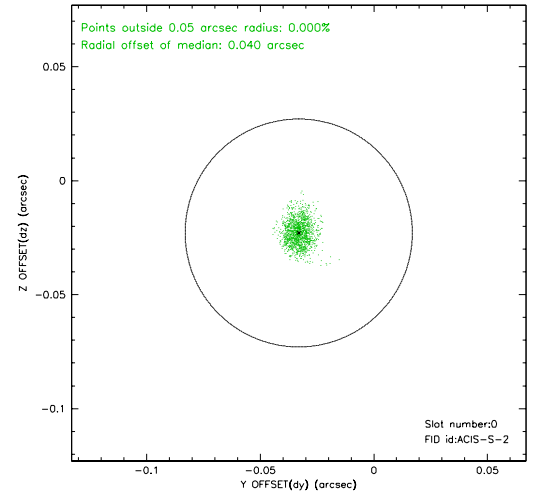
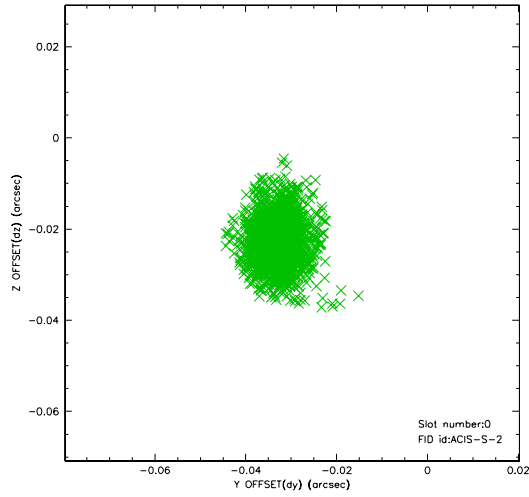


2.4.5 Slot 7

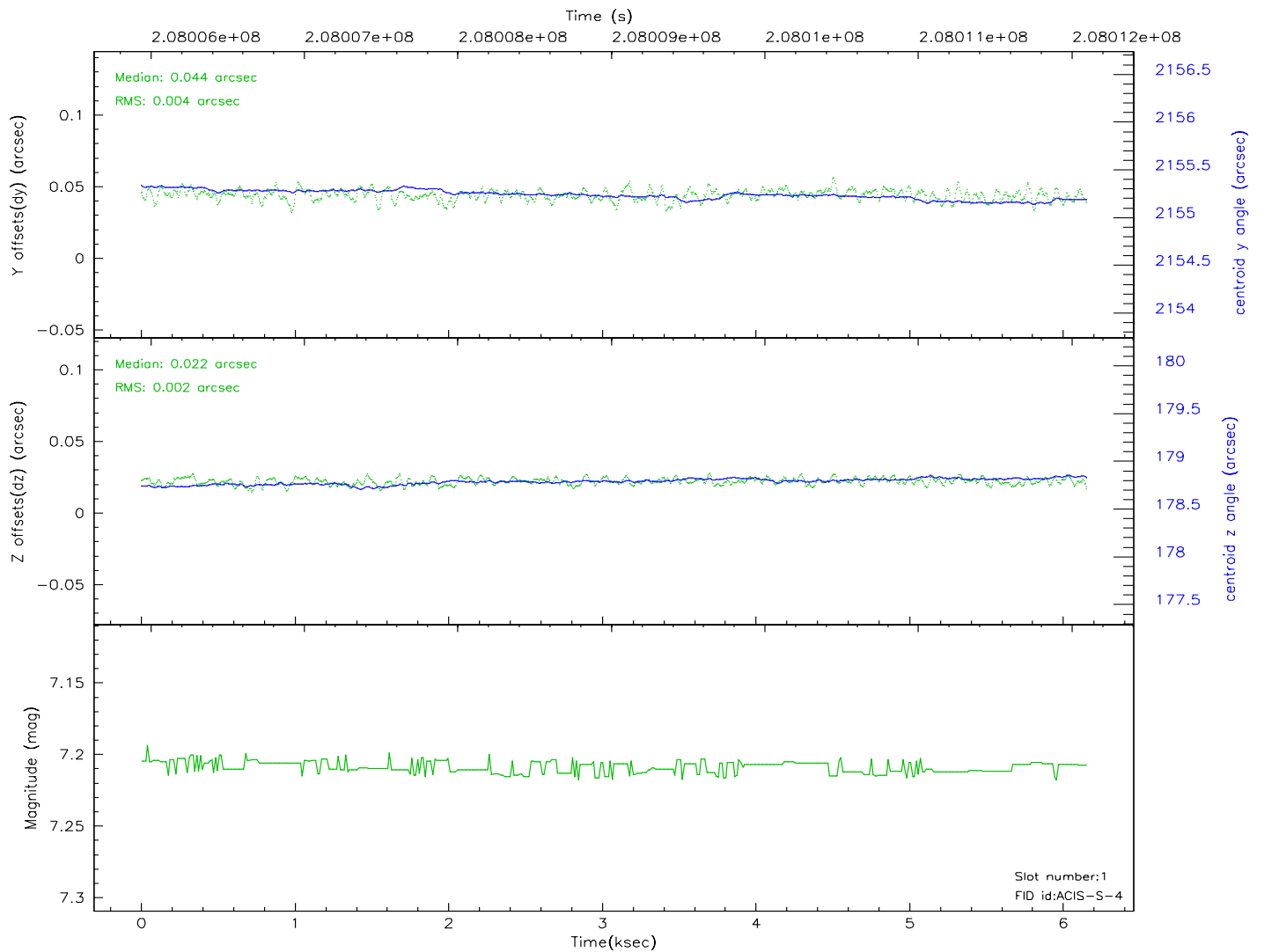
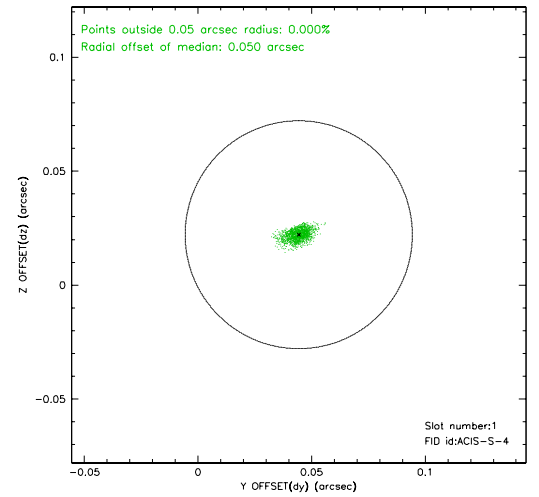
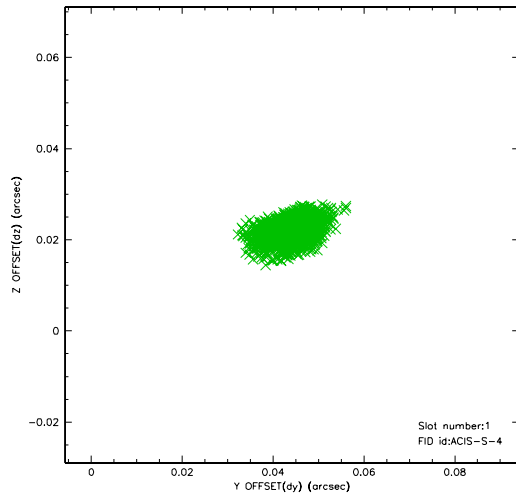


2.5 FID Slots

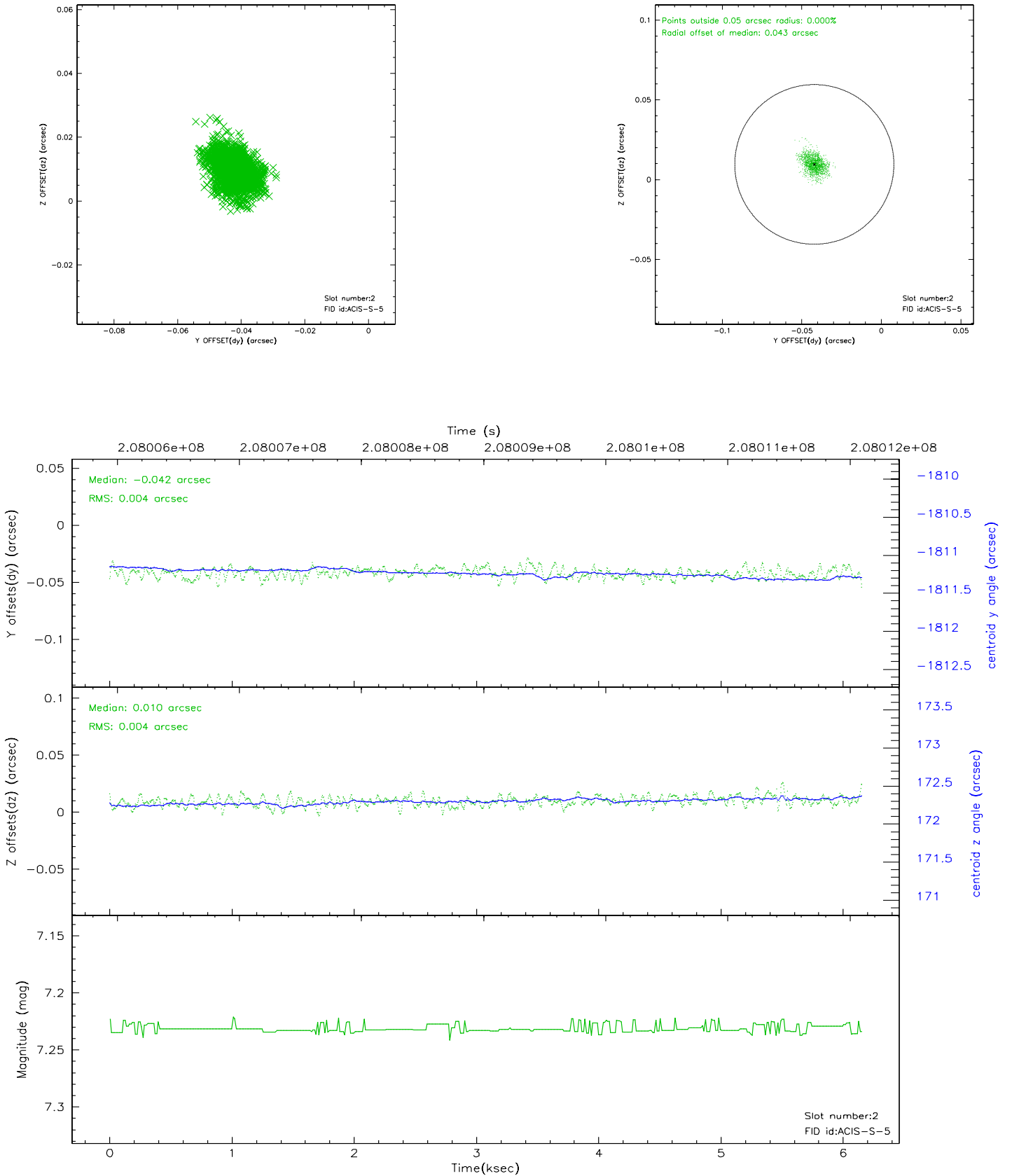
2.5.1 Slot 0



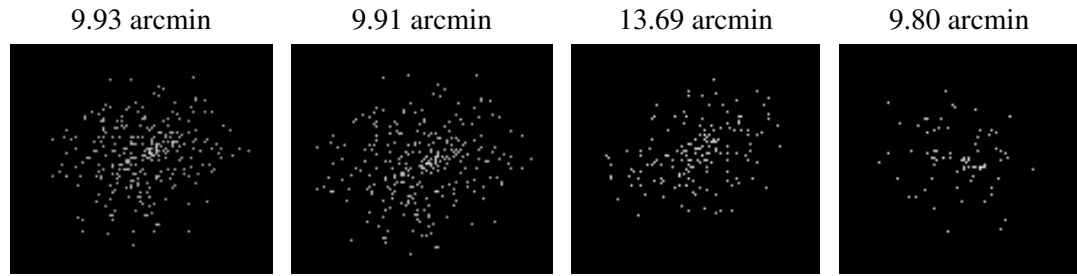
2.5.2 Slot 1



2.5.3 Slot 2



3 Point Sources



A Summary

A.1 Status

V&V Scientist	Jen Lauer
V&V Date (YYYY-MM-DD)	2006.04.26
V&V Edition	1
V&V Disposition and Status	OK
V&V Charge Time	6.153

A.2 Comments

Monitor constraint met.