

# V&V Reference Report

## L2 ASCDS Version : 7.6.7.2

Observation 4700 - L2 Version 001  
Chandra X-Ray Center

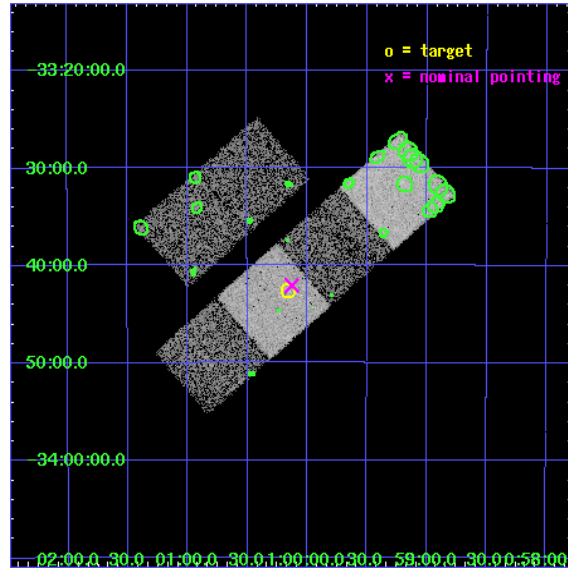
L2 Processing Date : May 18 2006

## Contents

<b>1</b>	<b>Front</b>	<b>2</b>
<b>2</b>	<b>OBI</b>	<b>3</b>
2.1	OBI . . . . .	3
2.1.1	Images . . . . .	3
2.1.2	Bias . . . . .	3
2.1.3	Parameters . . . . .	4
2.1.4	Events . . . . .	4
2.2	Compared Parameters . . . . .	5
2.3	Aspect . . . . .	6
2.4	Star Slots . . . . .	9
2.4.1	Slot 3 . . . . .	9
2.4.2	Slot 4 . . . . .	10
2.4.3	Slot 5 . . . . .	11
2.4.4	Slot 6 . . . . .	12
2.4.5	Slot 7 . . . . .	13
2.5	FID Slots . . . . .	14
2.5.1	Slot 0 . . . . .	14
2.5.2	Slot 1 . . . . .	15
2.5.3	Slot 2 . . . . .	16
<b>3</b>	<b>Point Sources</b>	<b>17</b>
<b>A</b>	<b>Summary</b>	<b>18</b>
A.1	Status . . . . .	18
A.2	Comments . . . . .	18

# 1 Front

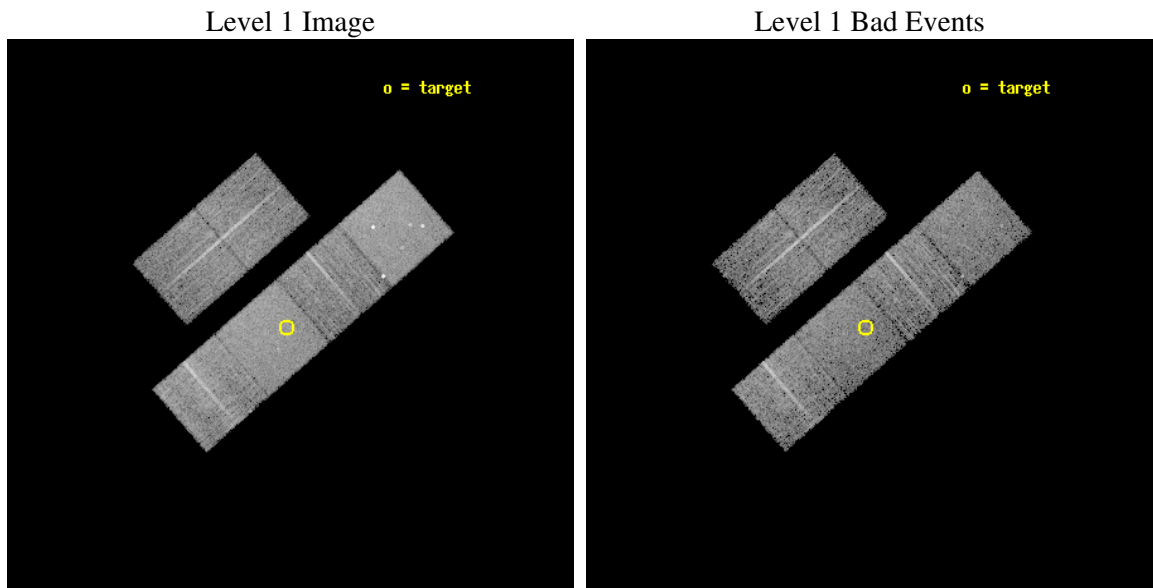
seq_num	600355
obs_id	4700
title	Using the Sculptor Dwarf Spheroidal Galaxy to Constrain X-ray Binary Production in Population II
observer	Dr. Thomas Maccarone
object	SCULPTOR DWARF SPHEROIDAL
dtcycle	0
cycle	P
ra_targ	15.039167
dec_targ	-33.708889
ra_nom	15.031854643922
dec_nom	-33.701252251416
roll_nom	138.77782623215
revision	2
ontime	6182.3999769688
livetime	6104.114705866
ontime2	6182.3999769688
ontime3	6182.3999769688
ontime5	6182.3999769688
ontime6	6182.3999769688
ontime7	6182.3999769688
ontime8	6182.3999769688
l2events	68909



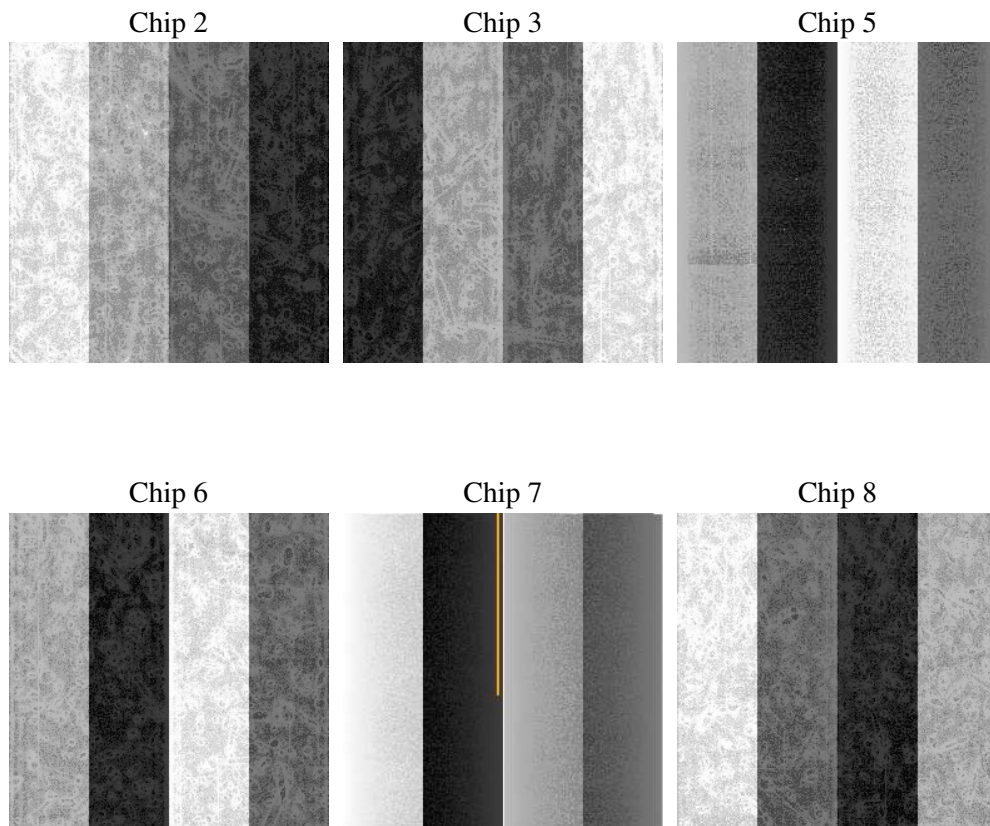
## 2 OBI

### 2.1 OBI

#### 2.1.1 Images



#### 2.1.2 Bias



### 2.1.3 Parameters

obi_num	0
ascdsver	7.6.7.2
caldbver	3.2.2
date	2006-05-18T04:09:56
revision	2

sched_exp_time	6222.000000
ontime	6187.0695034266
ontime2	6187.0694835186
ontime3	6187.0694835186
ontime5	6187.0695034266
ontime6	6187.0694835186
ontime7	6187.0695034266
ontime8	6187.0694835186
l1events	317803

### 2.1.4 Events

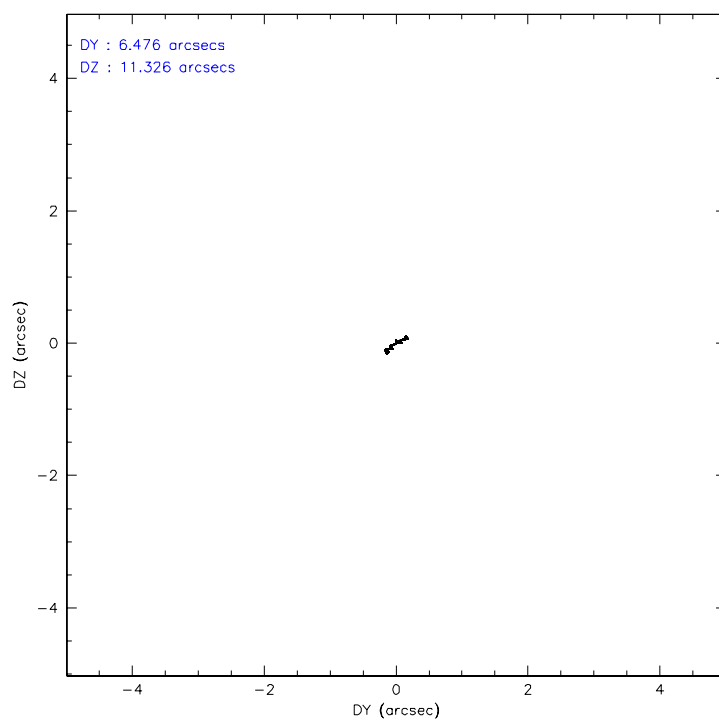
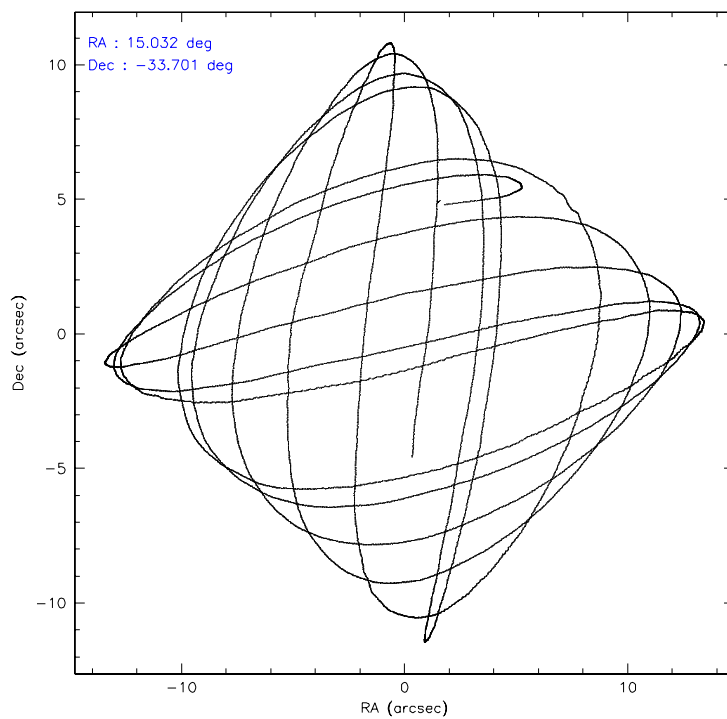
	ccd 2	ccd 3	ccd 5	ccd 6	ccd 7	ccd 8
level 1 events	45008	42290	68570	44771	59757	57407
rejected events	39668	37159	37712	39515	37068	45173
rejected %	88%	87%	54%	88%	62%	78%

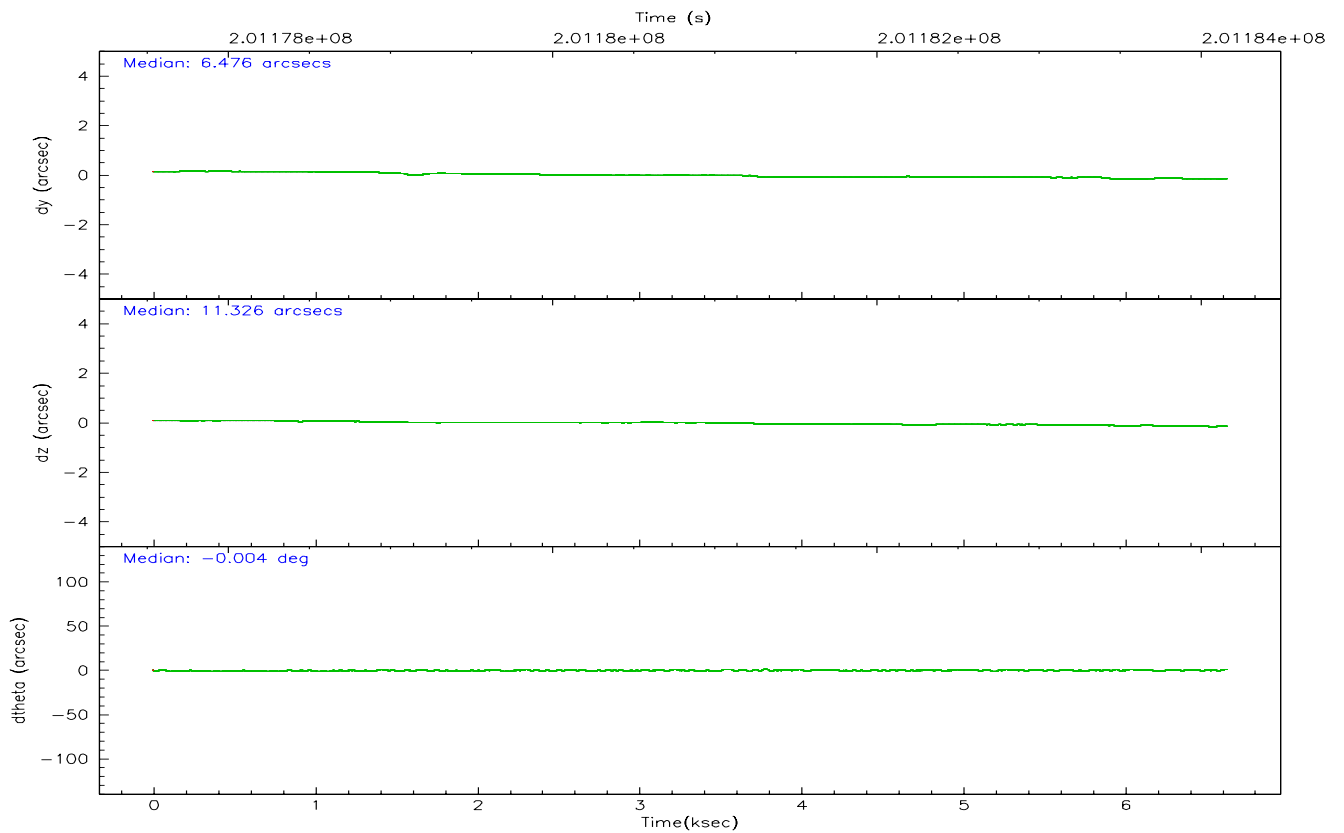
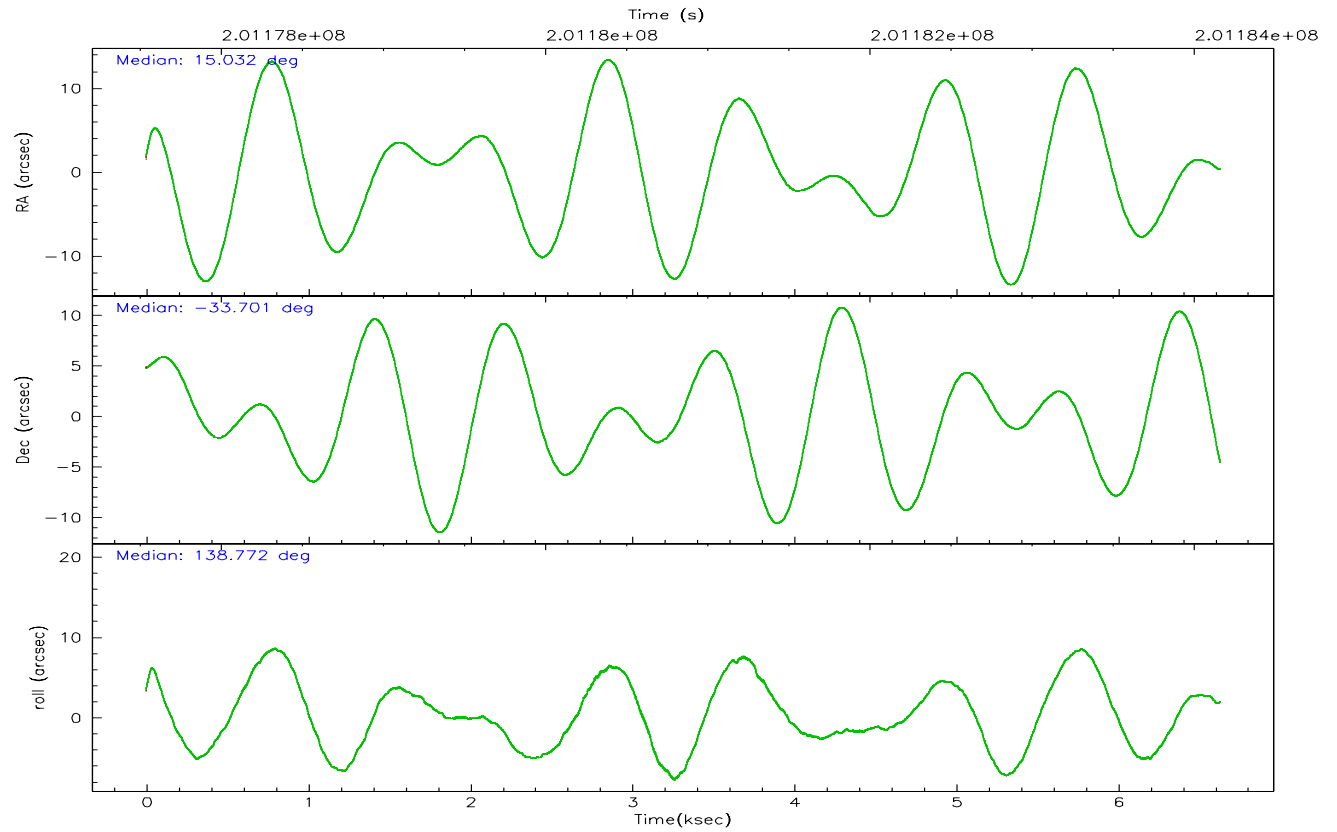
	ccd 2	ccd 3	ccd 5	ccd 6	ccd 7	ccd 8
grade 0 events	2404	2337	3141	2101	1304	3823
	5%	5%	4%	4%	2%	6%
grade 1 events	29	22	157	26	30	40
	0%	0%	0%	0%	0%	0%
grade 2 events	1078	921	9309	1049	5689	2589
	2%	2%	13%	2%	9%	4%
grade 3 events	476	458	786	501	1081	1373
	1%	1%	1%	1%	1%	2%
grade 4 events	455	558	817	524	1022	1292
	1%	1%	1%	1%	1%	2%
grade 5 events	1828	1926	3287	2073	3828	2732
	4%	4%	4%	4%	6%	4%
grade 6 events	931	859	16838	1086	13613	3166
	2%	2%	24%	2%	22%	5%
grade 7 events	37807	35209	34235	37411	33190	42392
	84%	83%	49%	83%	55%	73%

## 2.2 Compared Parameters

Parameter	Planned	Actual	Parameter	Planned	Actual
Instrument	ACIS	ACIS	Obspar format version number	6	6
Detector	ACIS-235678	ACIS-235678	Obspar file type	PREDICTED	ACTUAL
Grating	NONE	NONE	Obspar update status	NONE	UPDATED
Data mode	VFAINT	VFAINT	On-chip summing requested	N	N
Observation mode	POINTING	POINTING	Subarray requested	NONE	NONE
Pointing RA	15.064087	15.03185464392221	Alternating exposures requested	N	N
Pointing Dec	-33.706275	-33.70125225141622	Primary exposure time	0.000000	3.2
Pointing Roll	138.639090	138.777826232146			
SIM focus pos (mm)	-0.684267	-0.6828225247311905			
SIM defocus (mm)	0	0.001444936568705701			
SIM translation stage pos (mm)	-190.132523	-190.1425803651734			
SIM translation stage offset (mm)	0	0.01005778216563158			
Observation start time	201177939.184000	201176868.88116			
Observation start date	2004-05-17T10:44:35	2004-05-17T10:27:48			
Observation end time	201184161.184000	201184675.2815			
Observation end date	2004-05-17T12:28:17	2004-05-17T12:37:55			
Read mode	TIMED	TIMED			

## 2.3 Aspect





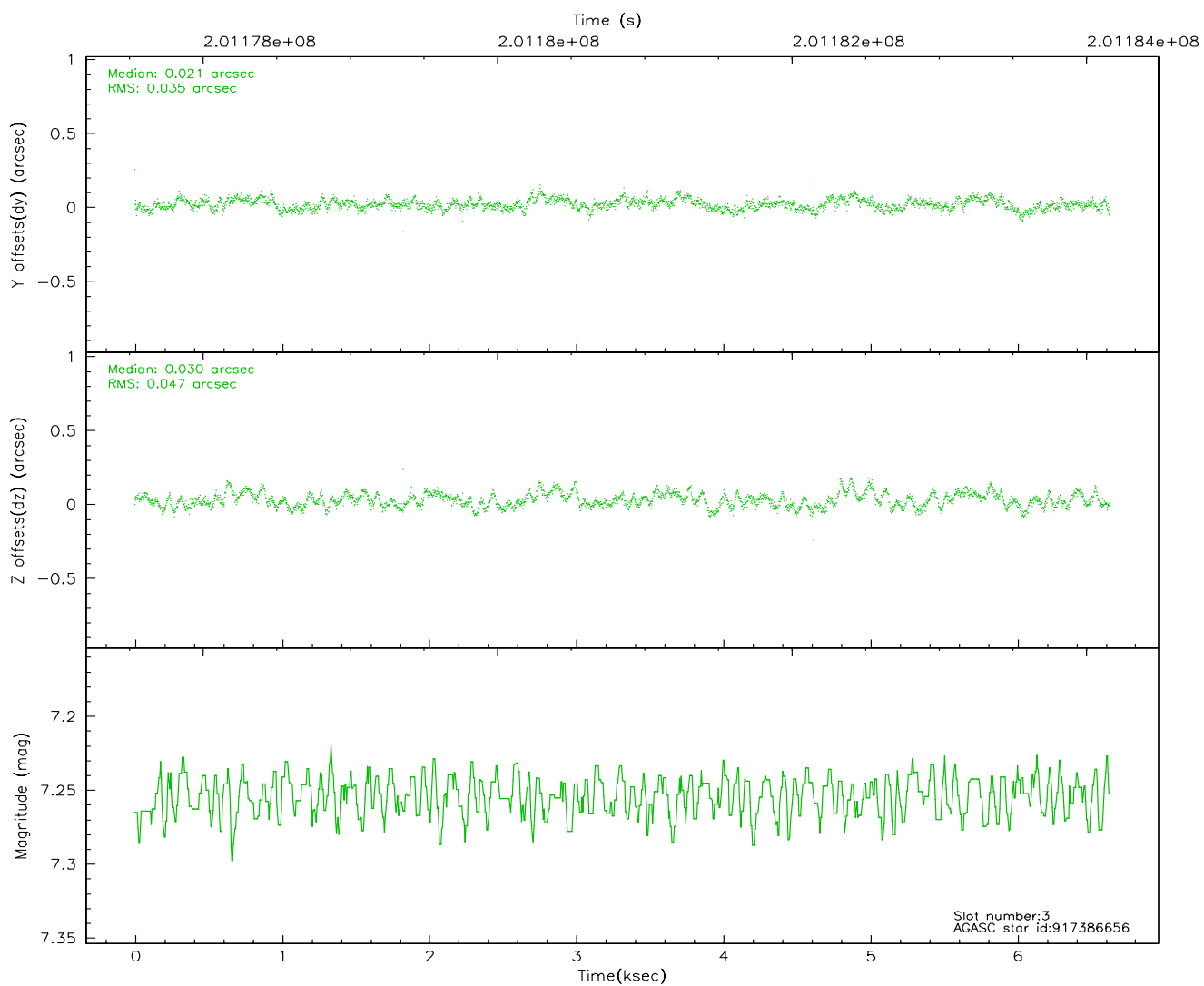
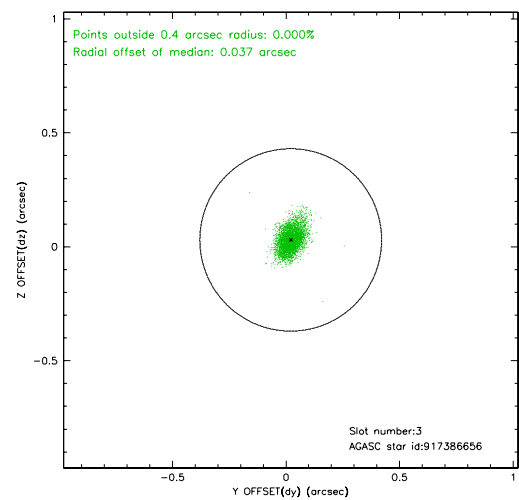
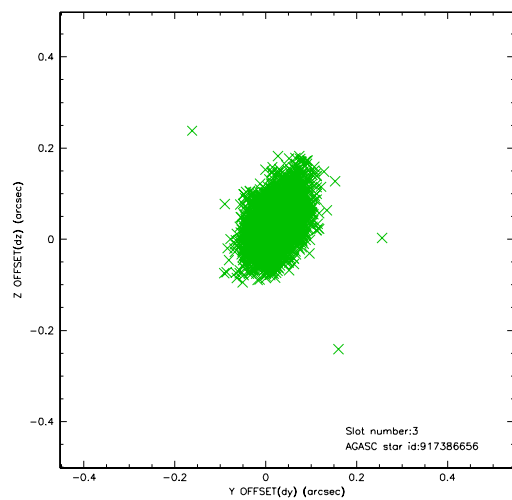
### Slot Statistics

slot	status	id	mag	n_pts	med_dy	med_dz	dr1	dr2	ra	dec	mean_y	mean_z
0	FID	ACIS-S-2	7.09	1618	-0.025	-0.009	0.006	0.011	0.000000	0.000000	-759.23	-1732.55
1	FID	ACIS-S-4	7.20	1618	0.020	0.011	0.006	0.010	0.000000	0.000000	2153.69	175.05
2	FID	ACIS-S-6	7.34	1617	-0.023	0.006	0.007	0.012	0.000000	0.000000	403.88	813.44
3	GUIDE	917386656	7.25	3236	0.021	0.030	0.060	0.102	15.342124	-33.359890	195.82	-1487.31
4	GUIDE	917389288	9.56	3232	0.034	0.217	0.122	0.193	15.394706	-33.185862	489.44	-2063.07
5	GUIDE	917389592	9.99	3232	0.109	0.106	0.129	0.210	16.074673	-33.644125	-2134.88	-2158.73
6	GUIDE	917650528	8.72	3236	-0.135	-0.233	0.086	0.133	14.274554	-33.869842	1375.13	2007.73
7	GUIDE	917651768	9.62	3228	-0.024	-0.116	0.121	0.184	14.115744	-33.817552	1855.54	2185.69

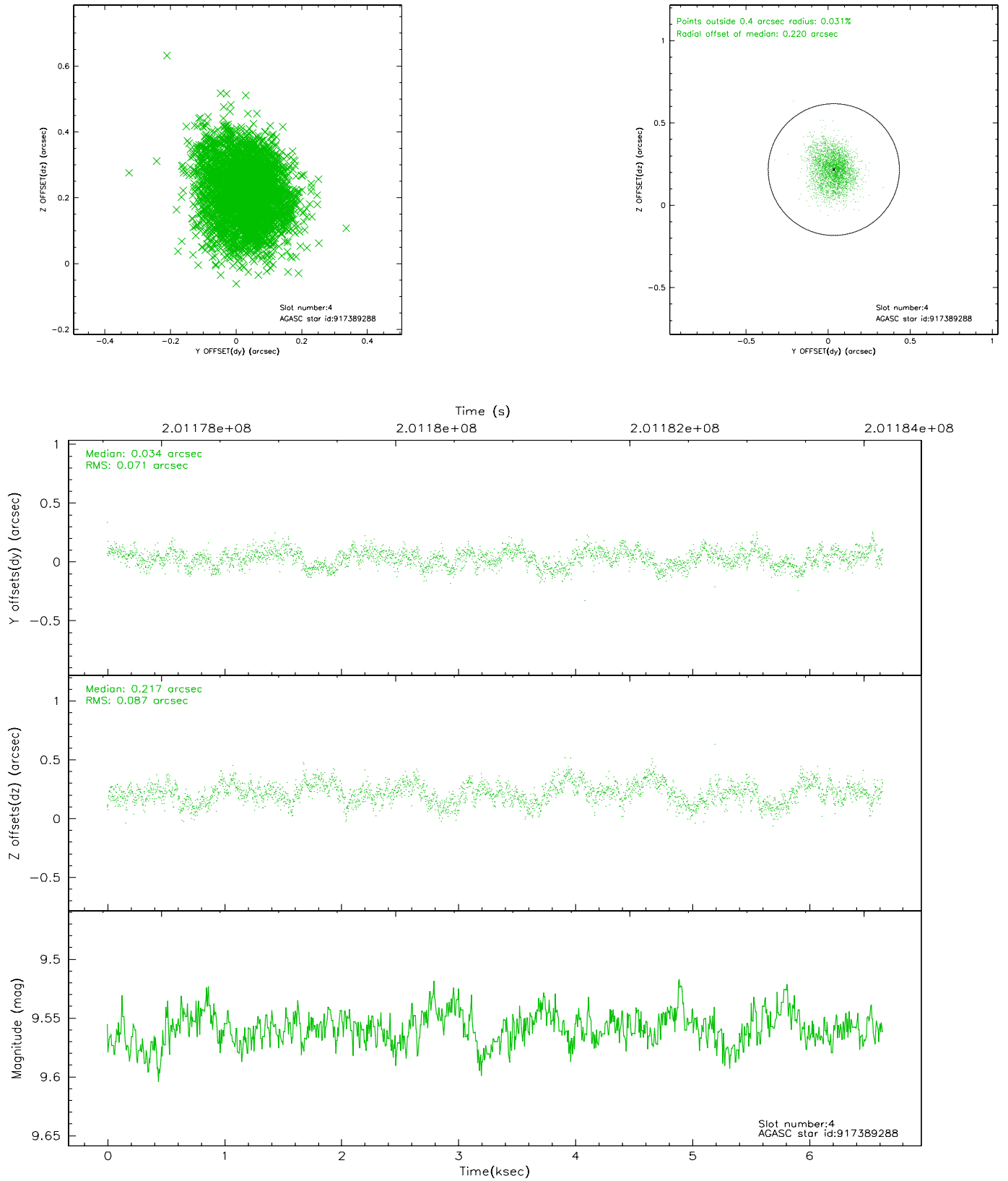


## 2.4 Star Slots

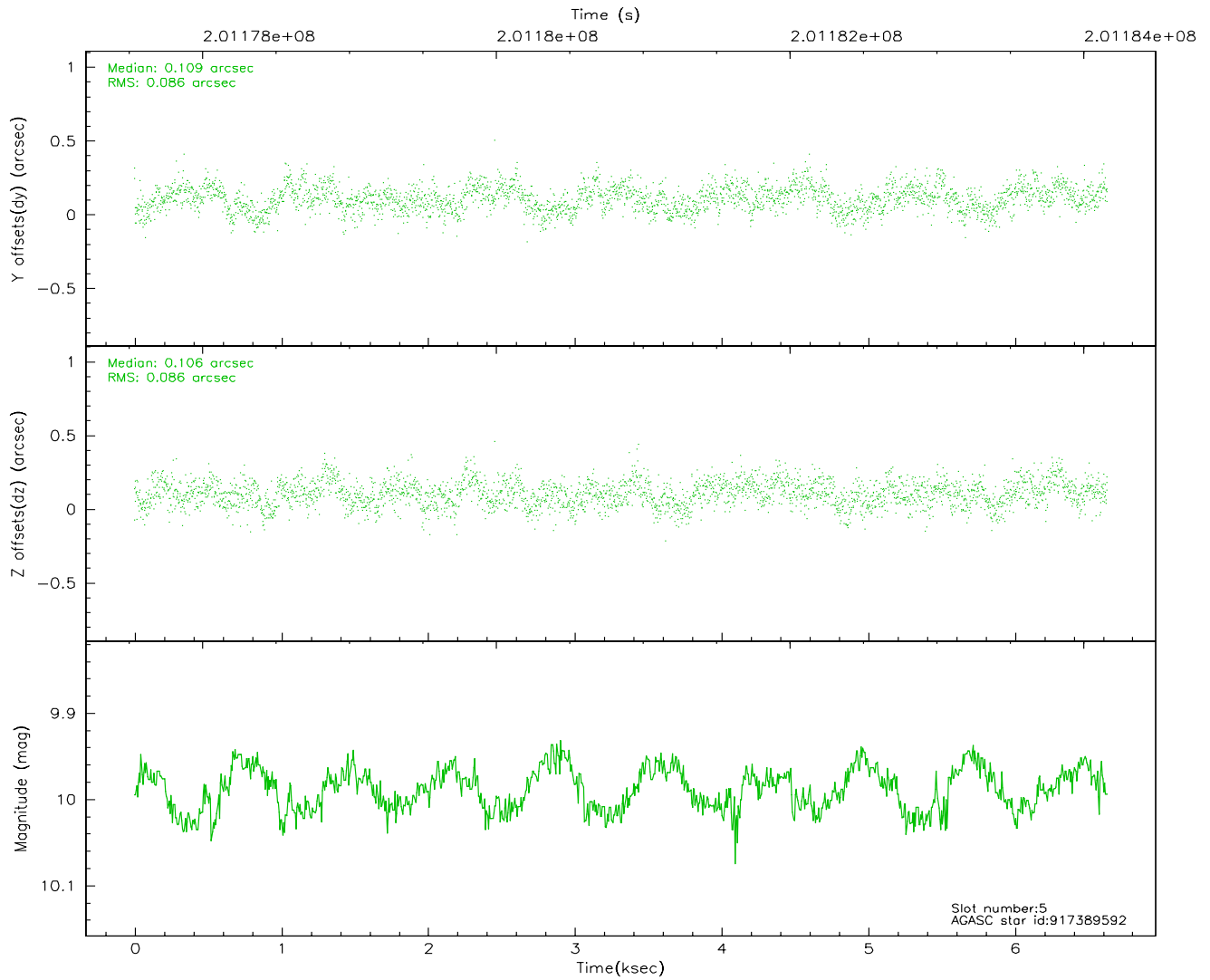
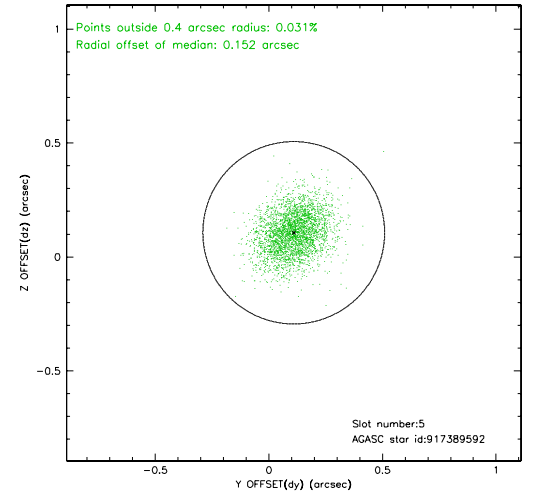
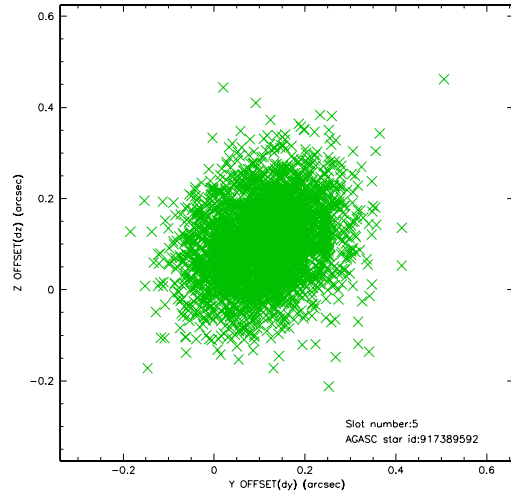
### 2.4.1 Slot 3



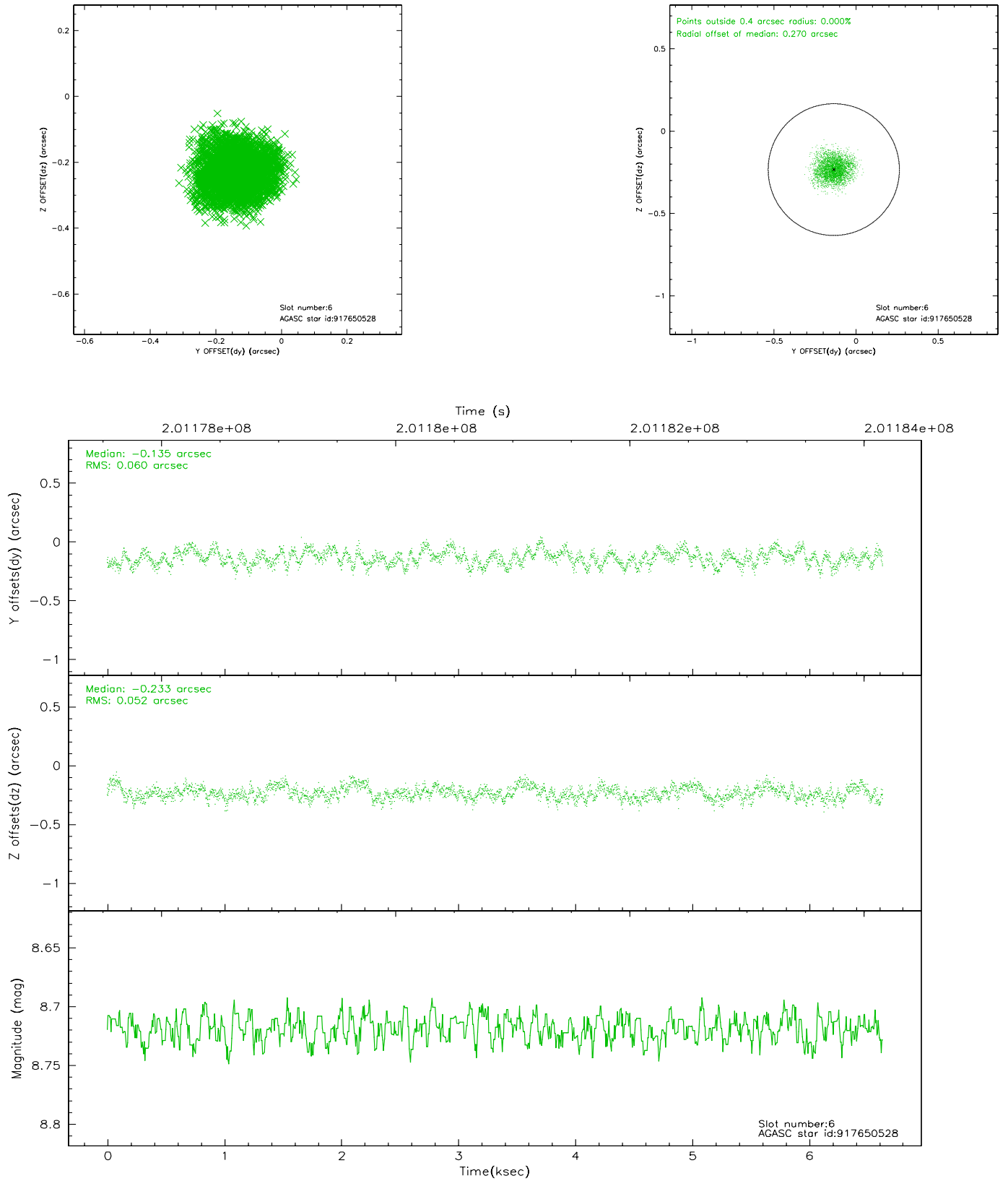
## 2.4.2 Slot 4



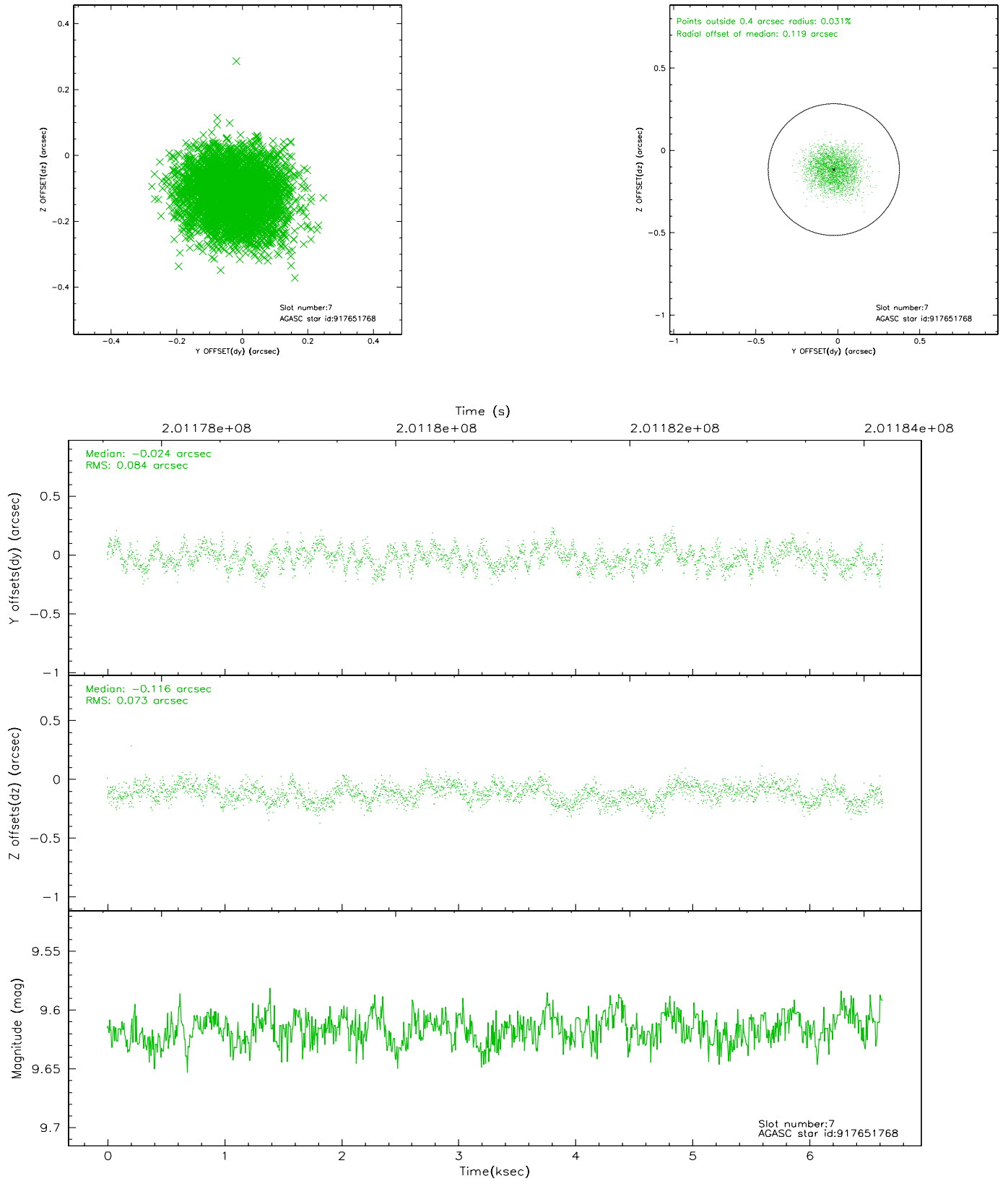
### 2.4.3 Slot 5



## 2.4.4 Slot 6

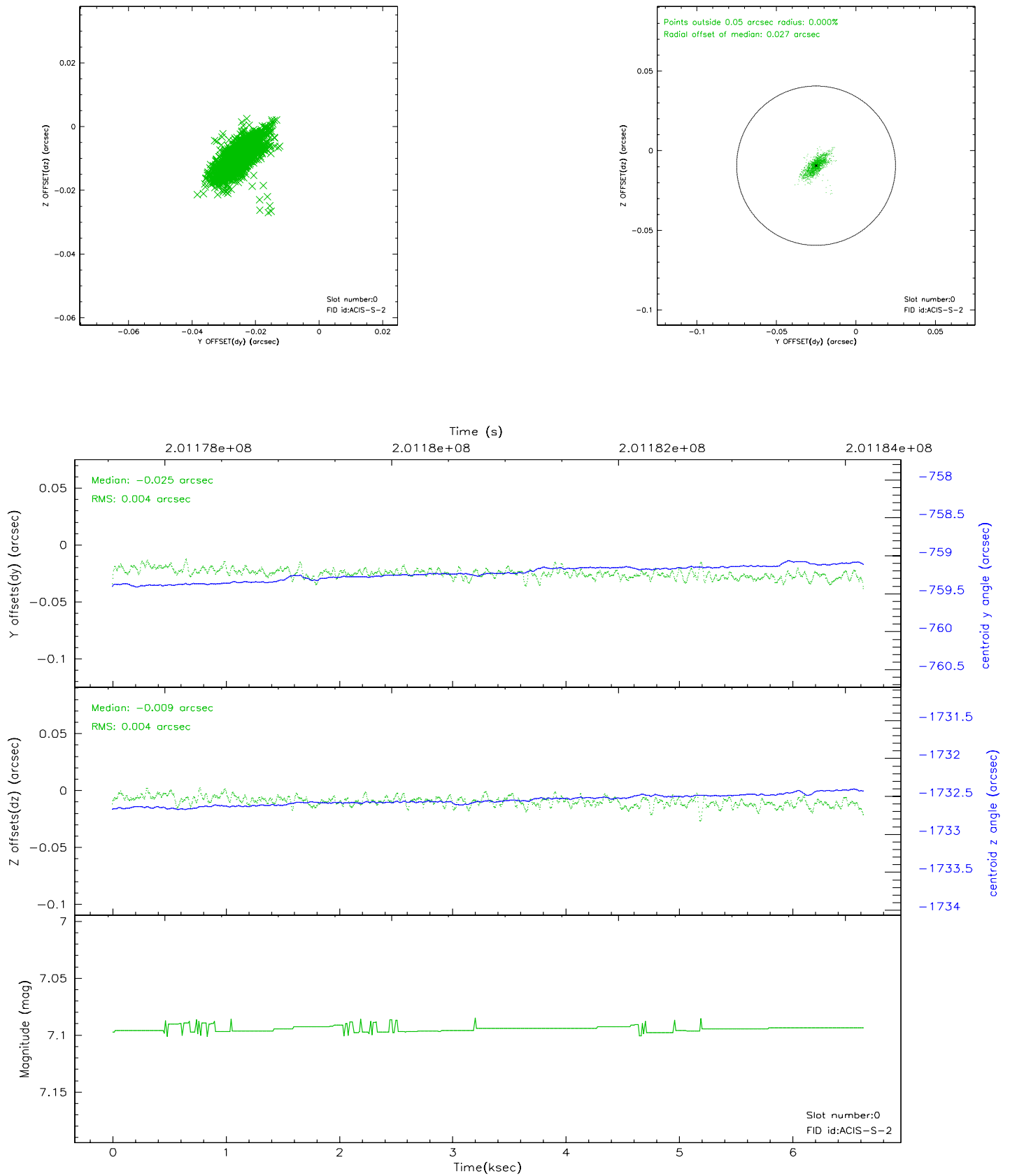


## 2.4.5 Slot 7

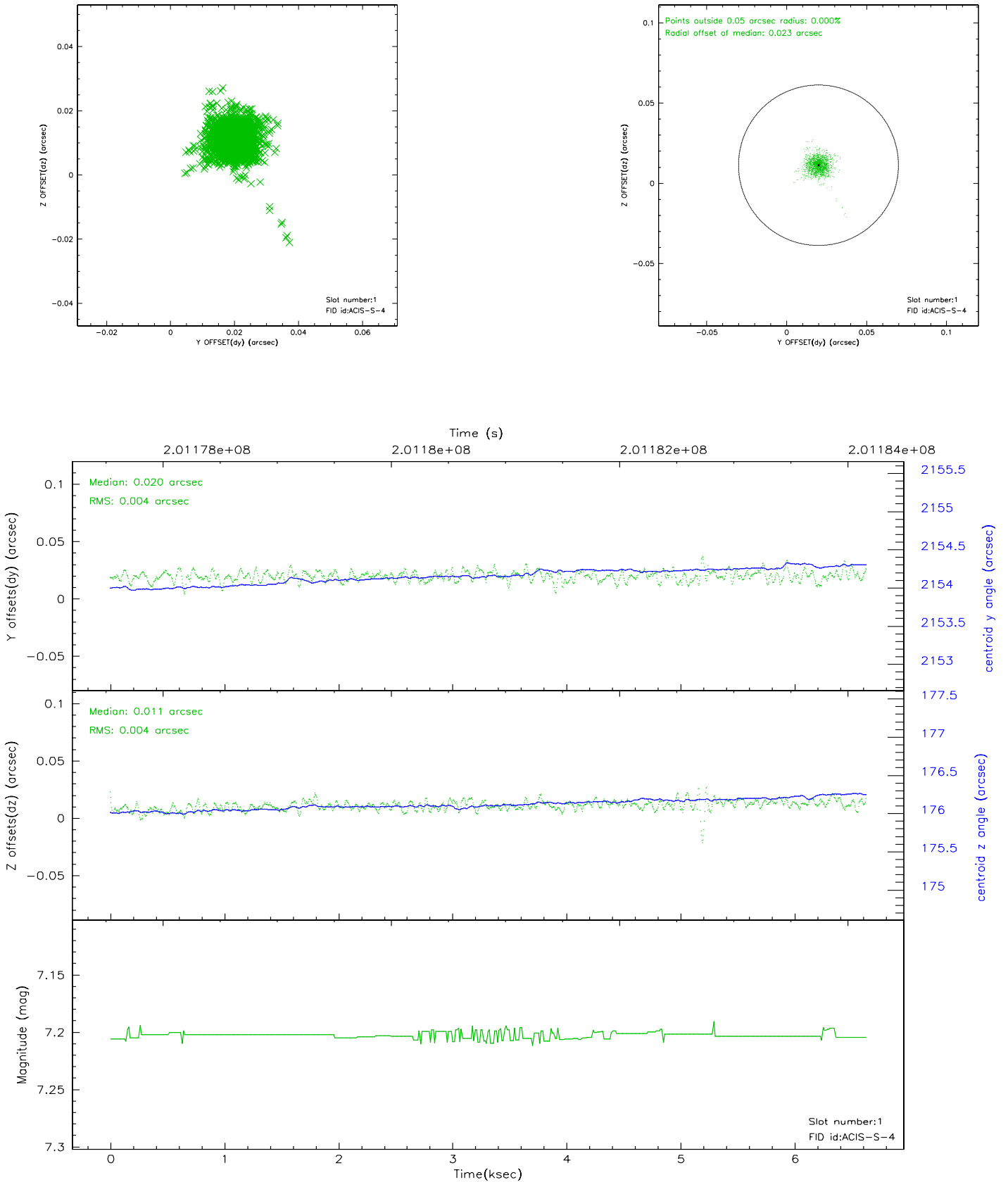


## 2.5 FID Slots

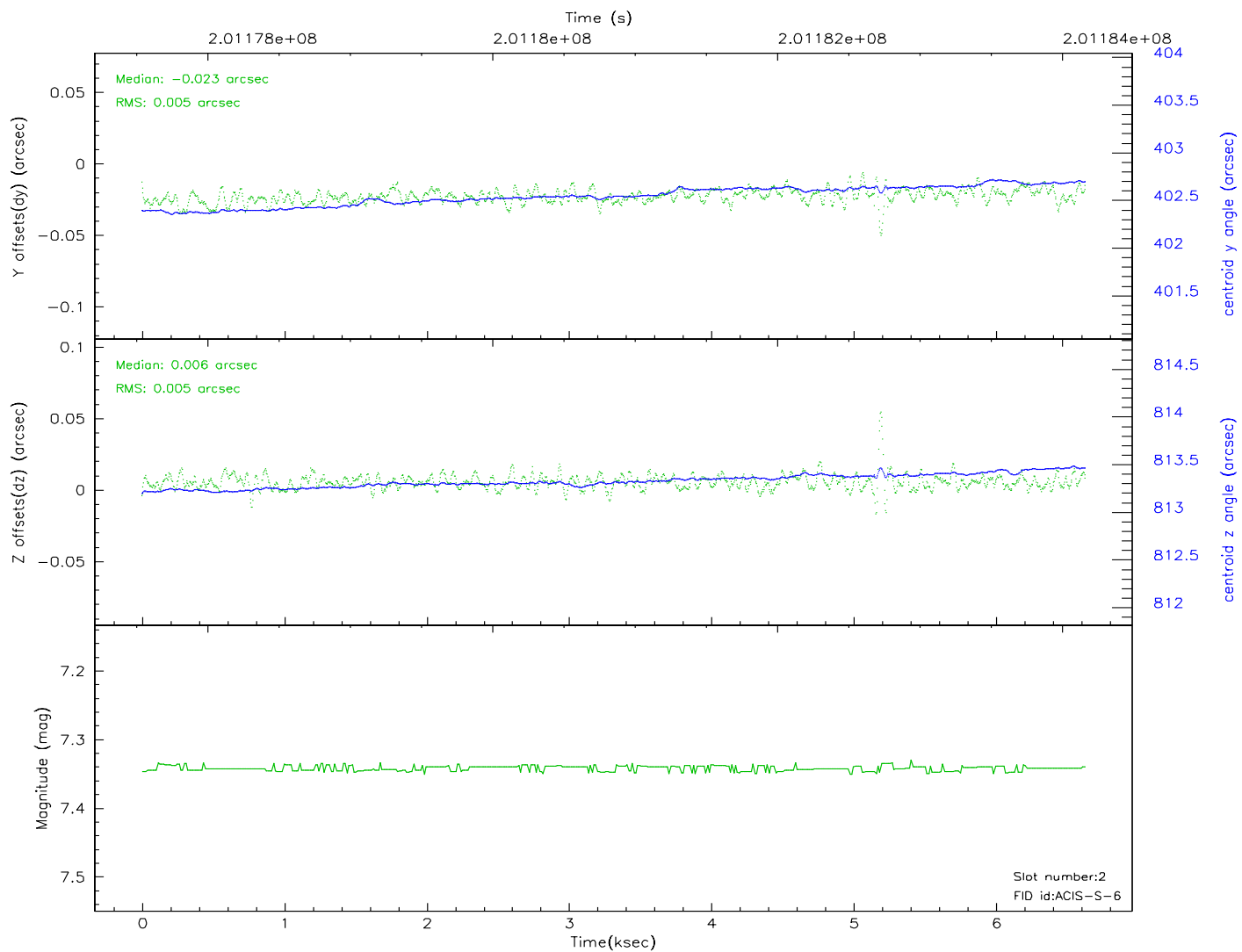
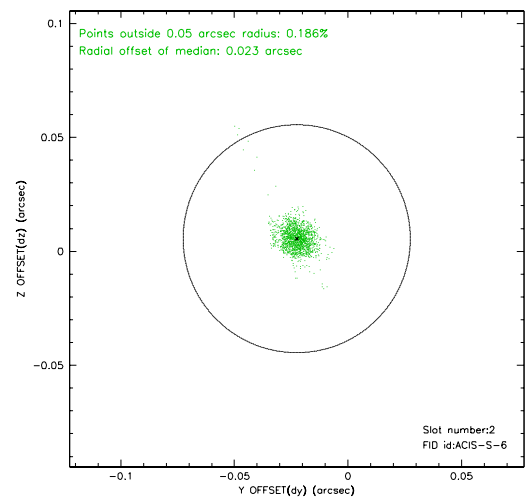
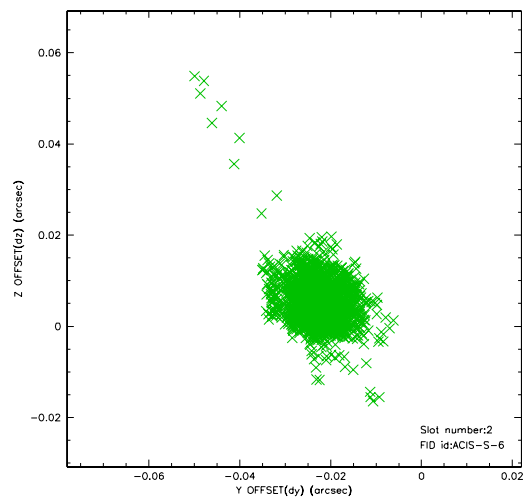
### 2.5.1 Slot 0



## 2.5.2 Slot 1

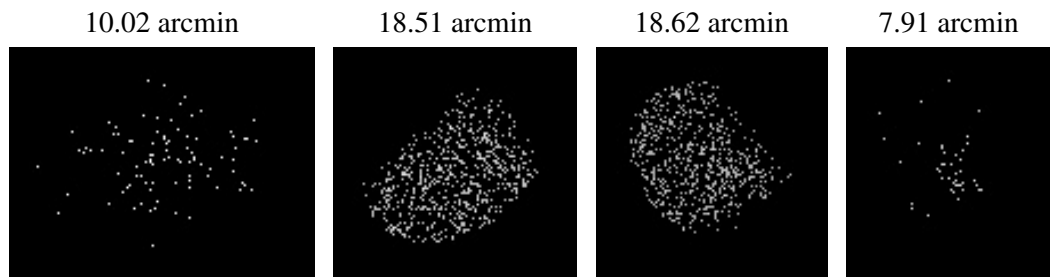


### 2.5.3 Slot 2





### 3 Point Sources



## A Summary

### A.1 Status

V&V Scientist	Jen Lauer
V&V Date (YYYY-MM-DD)	2006.05.18
V&V Edition	1
V&V Disposition and Status	OK
V&V Charge Time	6.185

### A.2 Comments

Monitor constraint met.