

V&V Reference Report

L2 ASCDS Version : 7.6.7.2

Observation 4696 - L2 Version 001
Chandra X-Ray Center

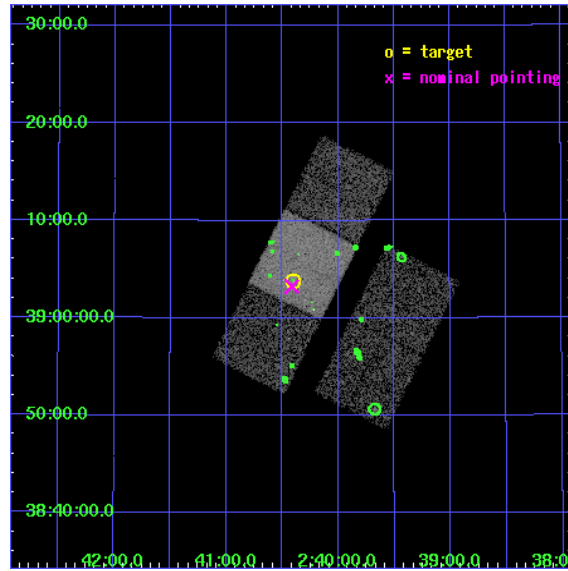
L2 Processing Date : Jun 6 2006

Contents

1	Front	2
2	OBI	3
2.1	OBI	3
2.1.1	Images	3
2.1.2	Bias	3
2.1.3	Parameters	4
2.1.4	Events	4
2.2	Compared Parameters	5
2.3	Aspect	6
2.4	Star Slots	9
2.4.1	Slot 3	9
2.4.2	Slot 4	10
2.4.3	Slot 5	11
2.4.4	Slot 6	12
2.4.5	Slot 7	13
2.5	FID Slots	14
2.5.1	Slot 0	14
2.5.2	Slot 1	15
2.5.3	Slot 2	16
3	Point Sources	17
A	Summary	18
A.1	Status	18
A.2	Comments	18

1 Front

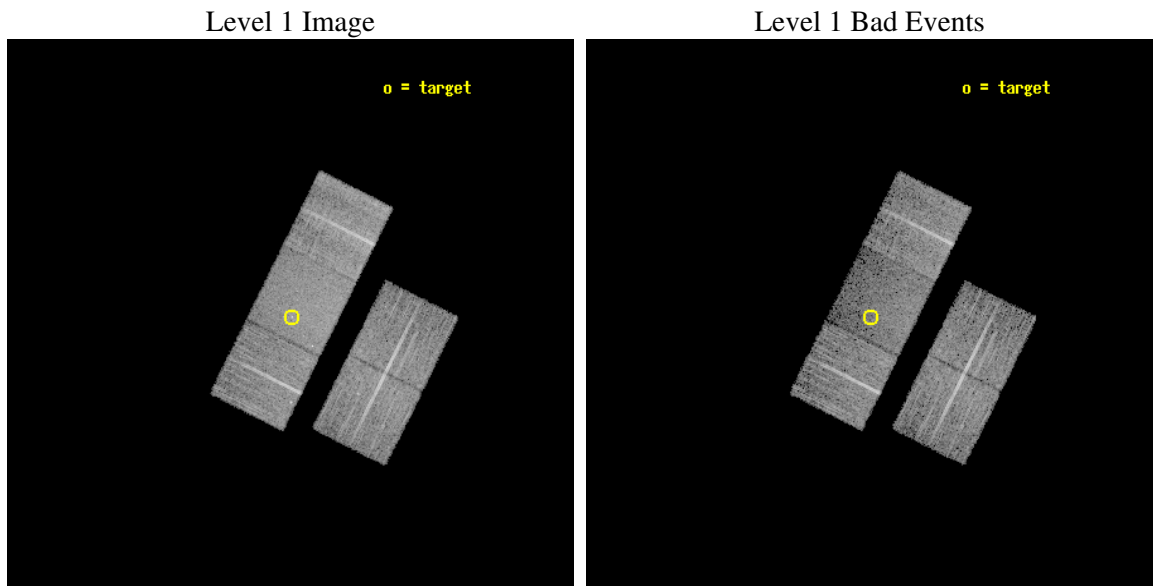
seq_num	600351
obs_id	4696
title	Physics of Accretion Flows in Ultra-low Luminosity AGNs: A Mini Survey of a Distance-Limited Sample of Inactive Galaxies
observer	Dr. Yuichi Terashima
object	NGC 1023
dtcycle	0
cycle	P
ra_targ	40.1
dec_targ	39.063333
ra_nom	40.103577803939
dec_nom	39.054111523289
roll_nom	296.57934419001
revision	3
ontime	10372.354148656
livetime	10236.831705688
ontime2	10337.803416133
ontime3	10347.226346821
ontime6	10362.931277752
ontime7	10372.354148656
ontime8	10340.944506109
l2events	49300



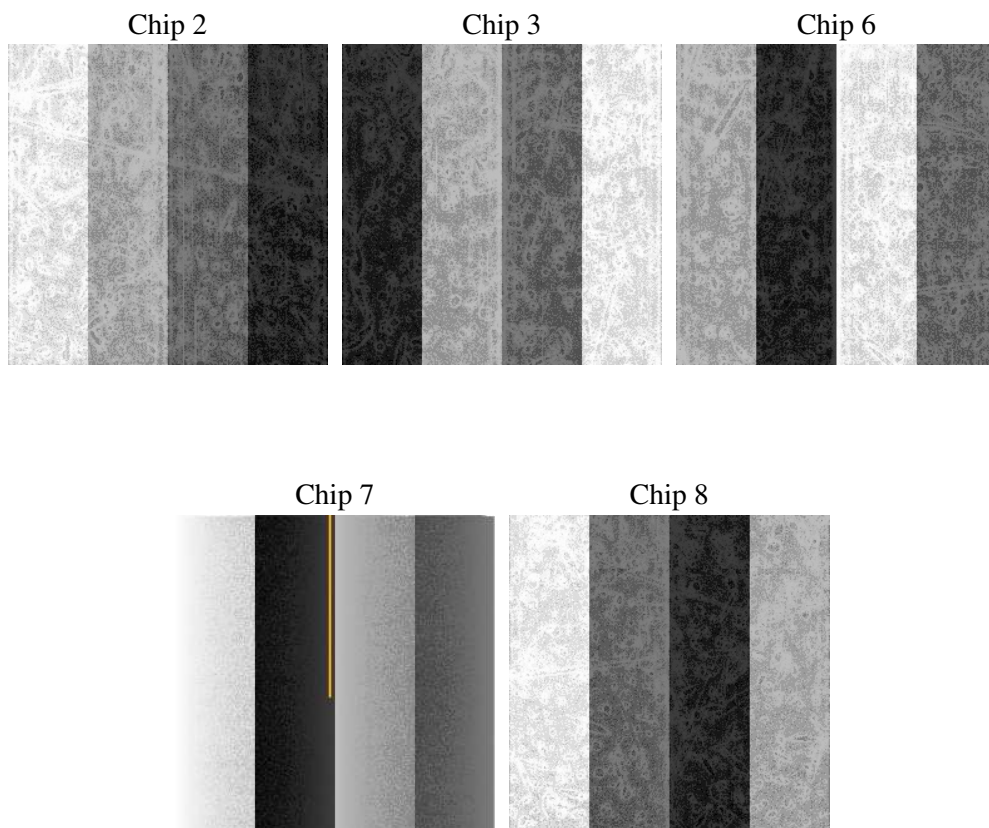
2 OBI

2.1 OBI

2.1.1 Images



2.1.2 Bias



2.1.3 Parameters

obi_num	0
ascdsver	7.6.7.2
caldbver	3.2.2
date	2006-06-06T12:19:06
revision	3

sched_exp_time	10250.000000
ontime	10585.188723177
ontime2	10550.637960732
ontime3	10560.06089142
ontime6	10575.765852273
ontime7	10585.188723177
ontime8	10553.779080629
llevents	318487

2.1.4 Events

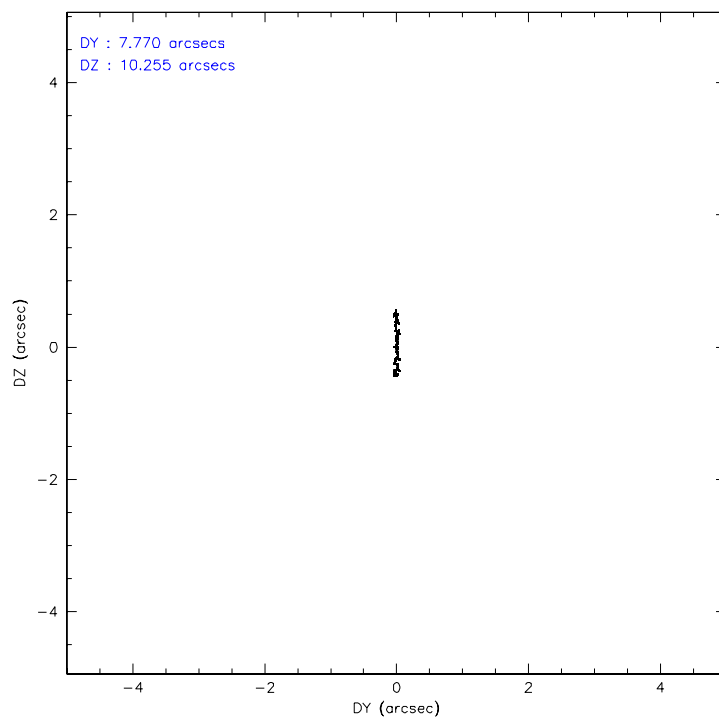
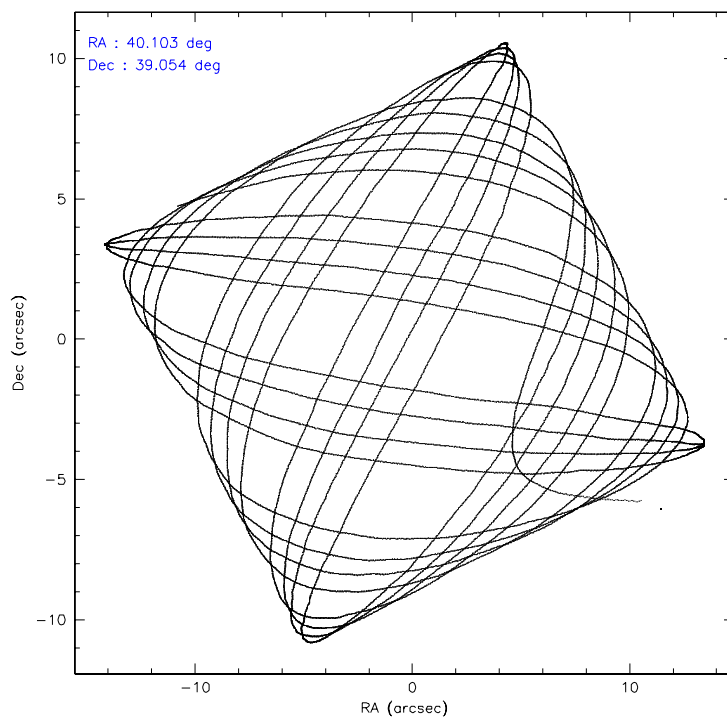
	ccd 2	ccd 3	ccd 6	ccd 7	ccd 8
level 1 events	60501	56582	60450	66805	74149
rejected events	54535	51216	54128	38196	57332
rejected %	90%	90%	89%	57%	77%

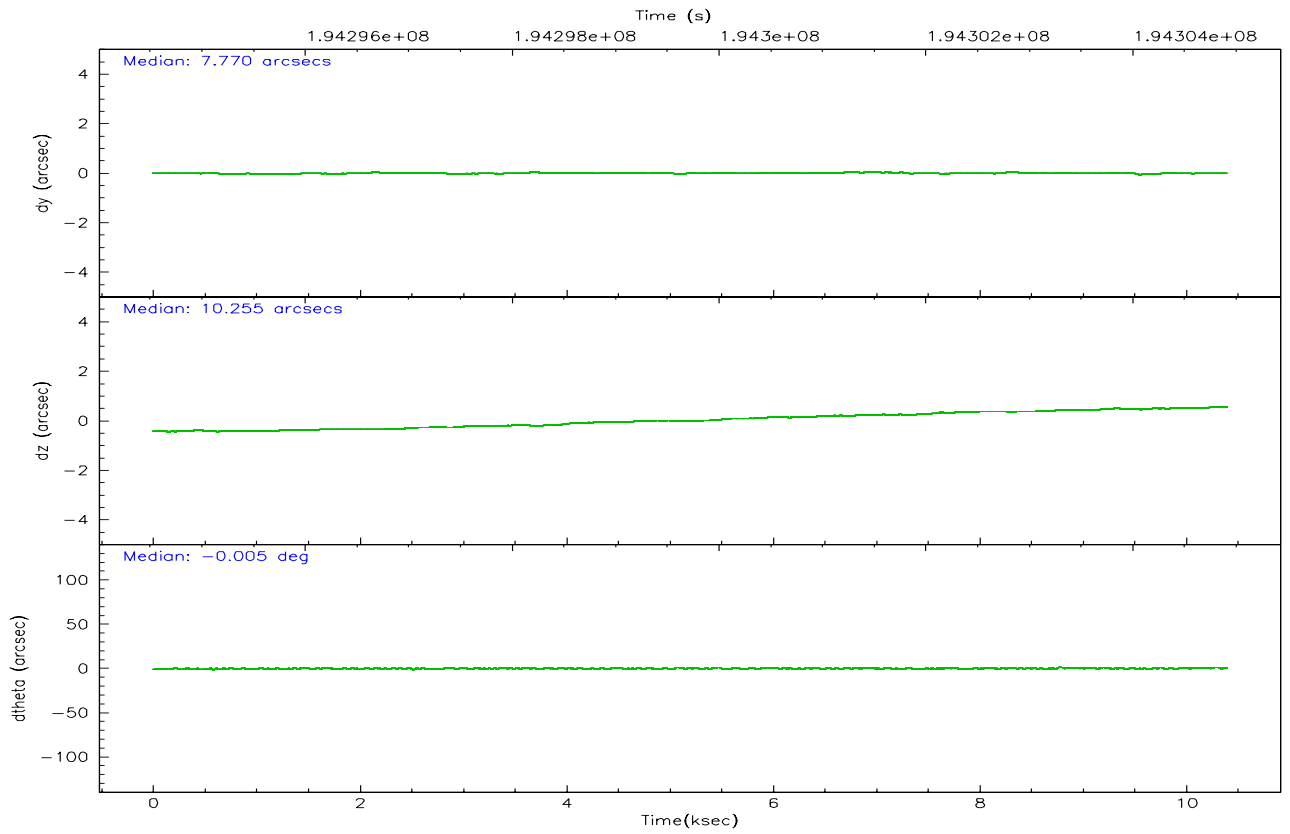
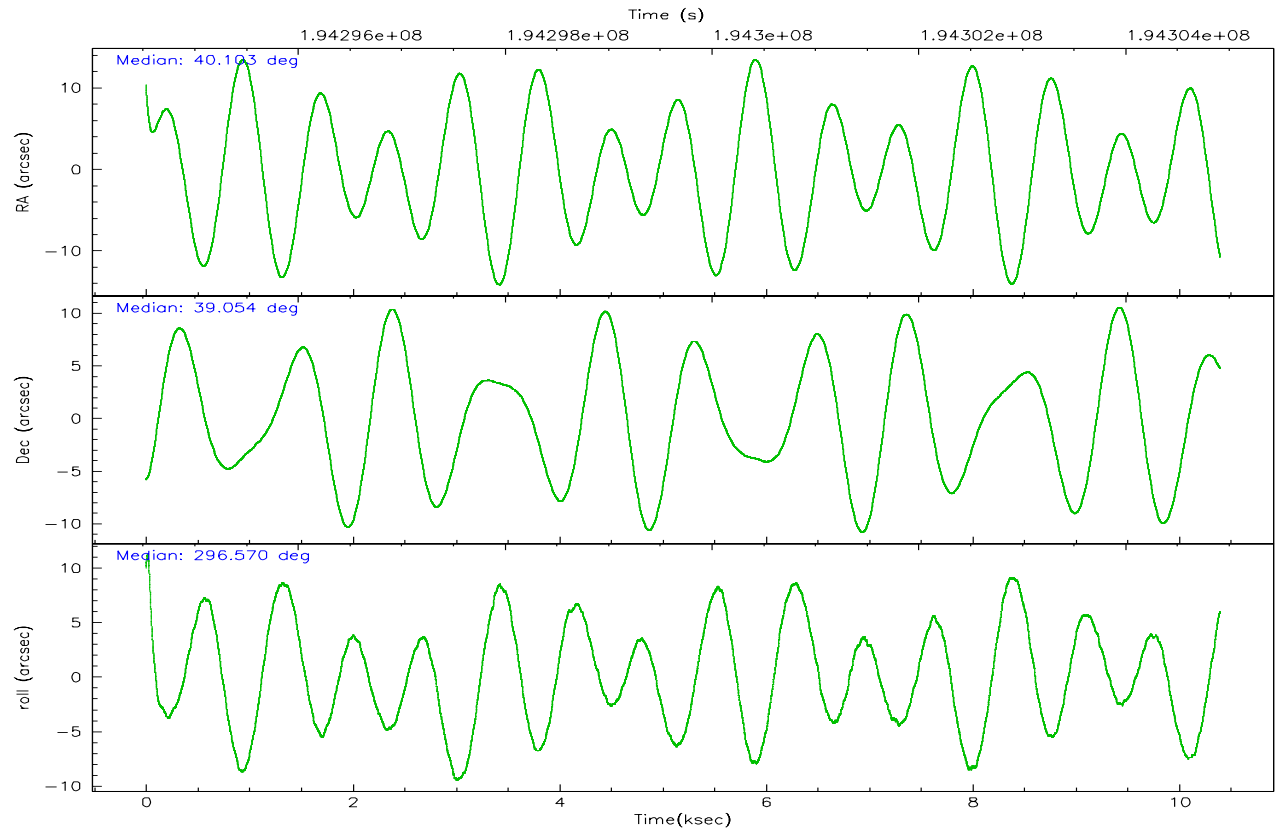
	ccd 2	ccd 3	ccd 6	ccd 7	ccd 8
grade 0 events	2378	2000	2426	2020	5171
	3%	3%	4%	3%	6%
grade 1 events	20	30	34	35	46
	0%	0%	0%	0%	0%
grade 2 events	1362	1181	1344	6958	3725
	2%	2%	2%	10%	5%
grade 3 events	642	622	709	1788	1866
	1%	1%	1%	2%	2%
grade 4 events	656	620	676	1736	1755
	1%	1%	1%	2%	2%
grade 5 events	1977	2251	2411	5041	3396
	3%	3%	3%	7%	4%
grade 6 events	1062	1077	1302	16663	4521
	1%	1%	2%	24%	6%
grade 7 events	52404	48801	51548	32564	53669
	86%	86%	85%	48%	72%

2.2 Compared Parameters

Parameter	Planned	Actual	Parameter	Planned	Actual
Instrument	ACIS	ACIS	Obspar format version number	6	6
Detector	ACIS-23678	ACIS-23678	Obspar file type	PREDICTED	ACTUAL
Grating	NONE	NONE	Obspar update status	NONE	UPDATED
Data mode	VFAINT	VFAINT	On-chip summing requested	N	N
Observation mode	POINTING	POINTING	Subarray requested	NONE	NONE
Pointing RA	40.074001	40.10357780393855	Alternating exposures requested	N	N
Pointing Dec	39.068751	39.05411152328905	Primary exposure time	0.000000	3.1
Pointing Roll	296.441337	296.5793441900093			
SIM focus pos (mm)	-0.684267	-0.6828225247311905			
SIM defocus (mm)	0	0.001444936568705701			
SIM translation stage pos (mm)	-190.132523	-190.1400660498719			
SIM translation stage offset (mm)	0	0.00754346686406393			
Observation start time	194294670.184000	194293586.65338			
Observation start date	2004-02-27T18:43:26	2004-02-27T18:26:26			
Observation end time	194304920.184000	194305404.90389			
Observation end date	2004-02-27T21:34:16	2004-02-27T21:43:24			
Read mode	TIMED	TIMED			

2.3 Aspect



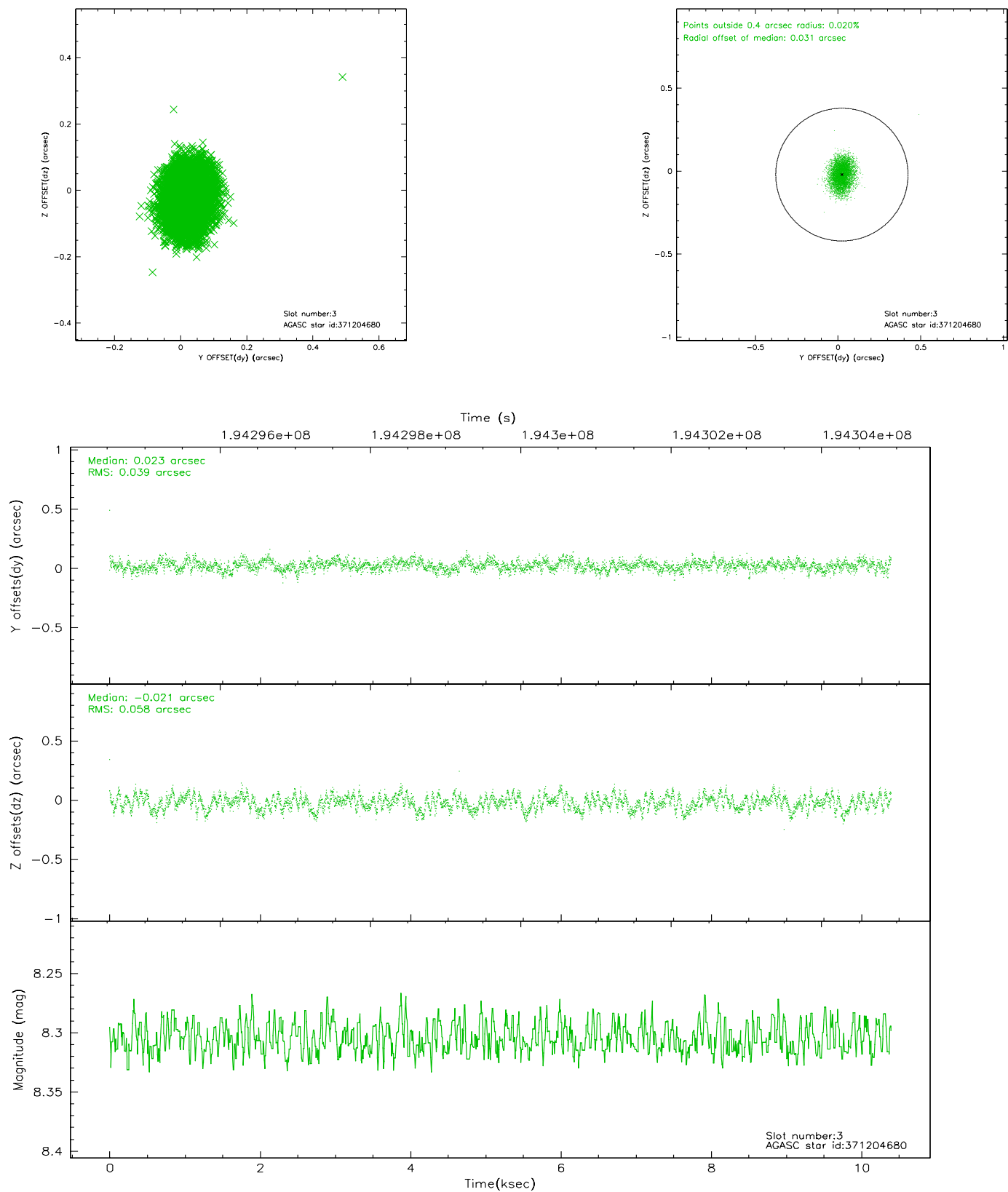


Slot Statistics

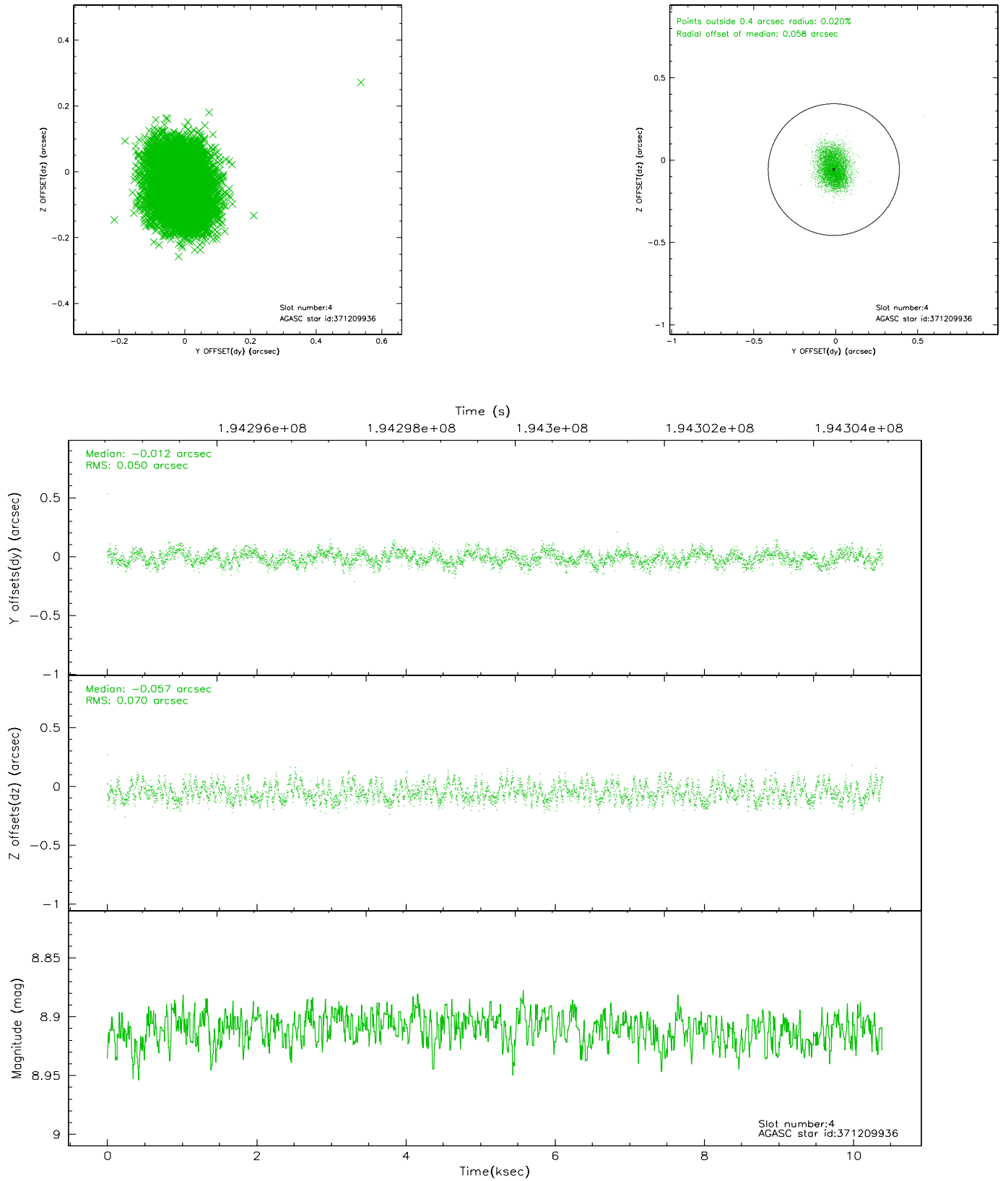
slot	status	id	mag	n_pts	med_dy	med_dz	dr1	dr2	ra	dec	mean_y	mean_z
0	FID	ACIS-S-2	7.10	2499	-0.032	-0.011	0.006	0.011	0.000000	0.000000	-760.54	-1731.56
1	FID	ACIS-S-4	7.20	2490	0.039	0.013	0.008	0.012	0.000000	0.000000	2152.54	176.46
2	FID	ACIS-S-6	7.34	2496	-0.034	0.005	0.009	0.015	0.000000	0.000000	402.06	814.41
3	GUIDE	371204680	8.31	5012	0.023	-0.021	0.075	0.118	39.715200	39.150194	-709.86	-765.48
4	GUIDE	371209936	8.91	5016	-0.012	-0.057	0.093	0.144	39.300739	38.838291	-230.13	-2306.79
5	GUIDE	371732936	9.05	5010	-0.109	-0.097	0.076	0.121	39.809928	39.516777	-1771.54	61.27
6	GUIDE	371215520	8.21	5016	0.010	0.001	0.070	0.113	39.565116	38.388424	1550.43	-2374.19
7	GUIDE	372903184	9.05	5013	0.092	0.173	0.100	0.155	40.811300	39.366216	-52.21	2317.74

2.4 Star Slots

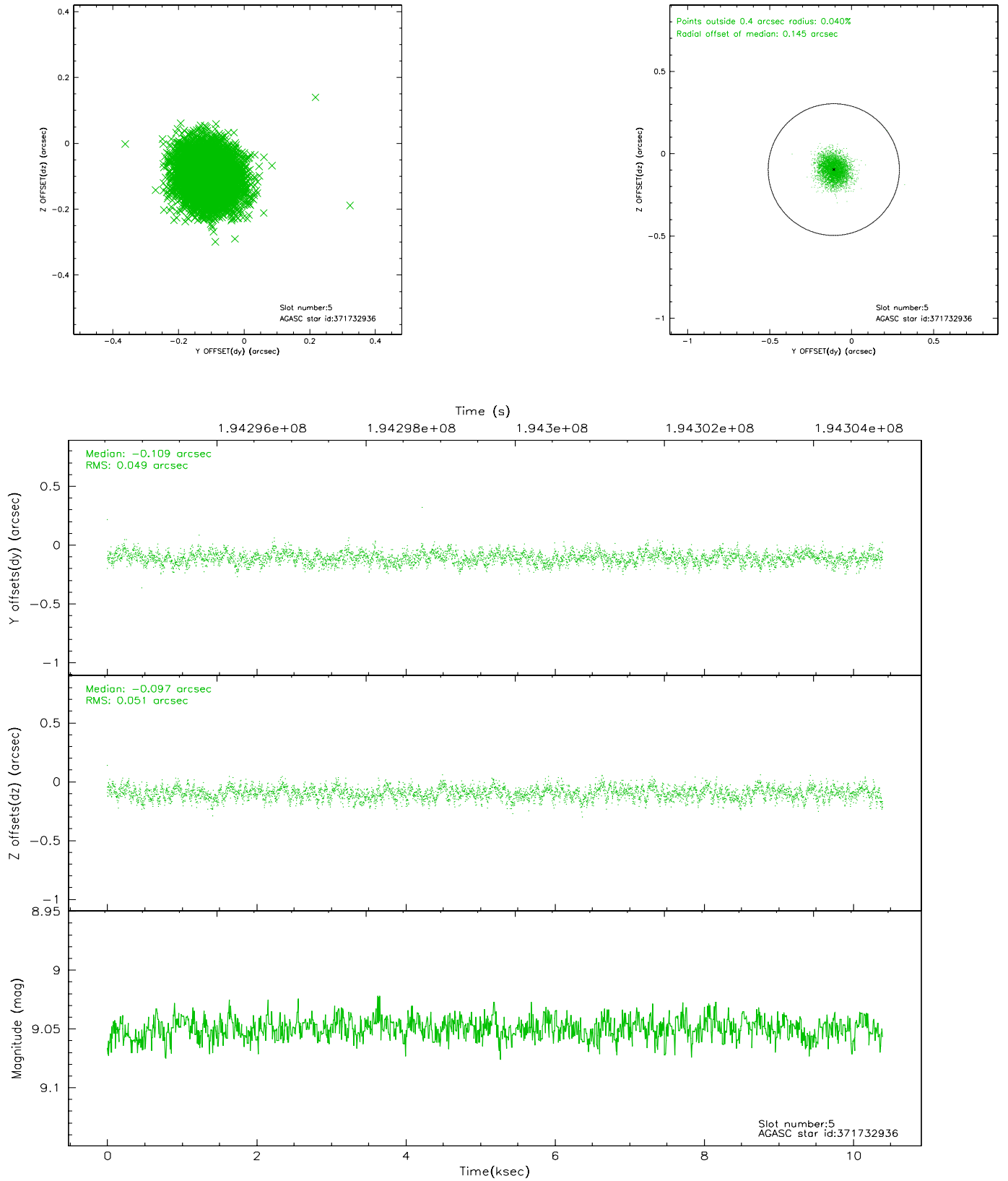
2.4.1 Slot 3



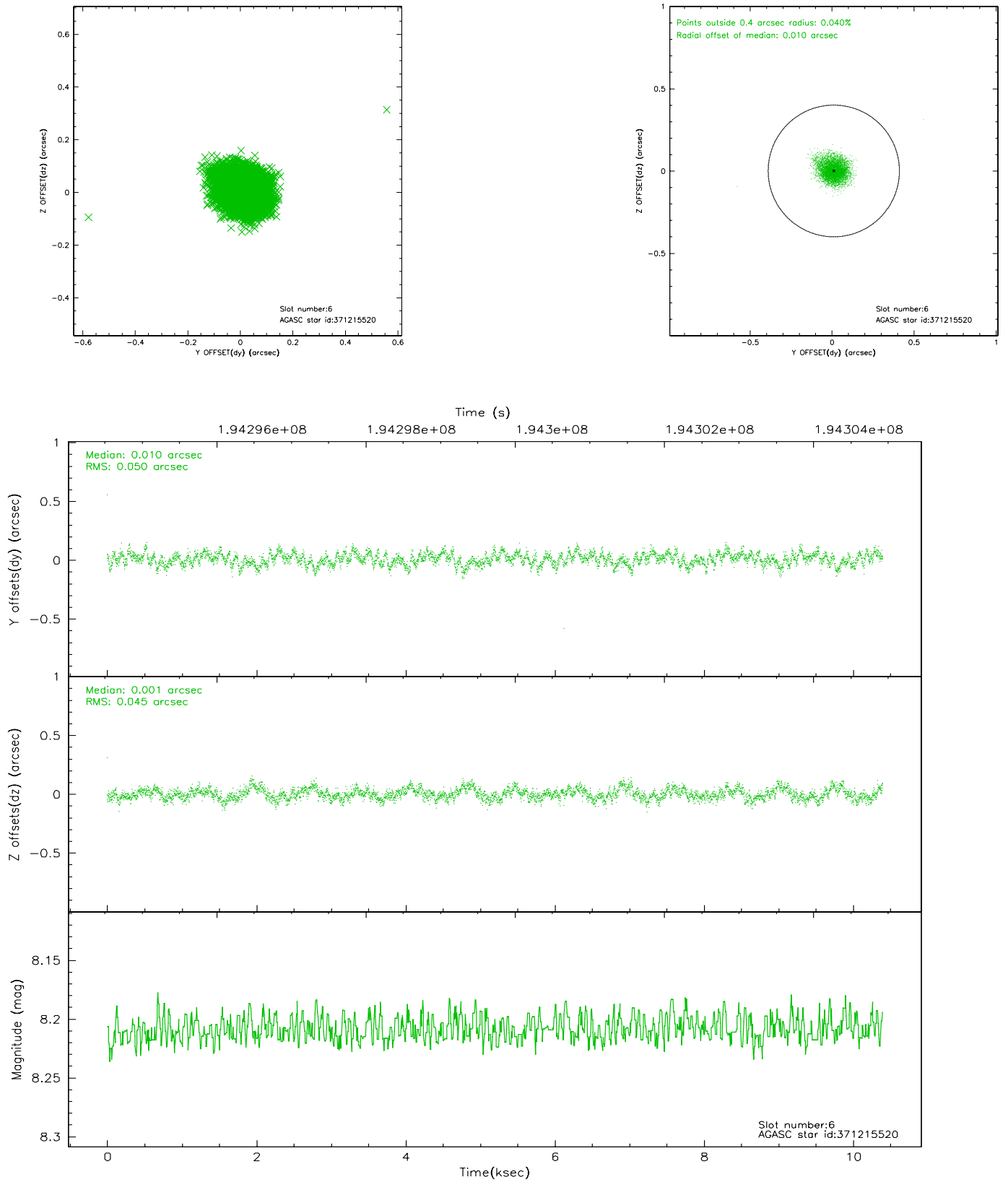
2.4.2 Slot 4



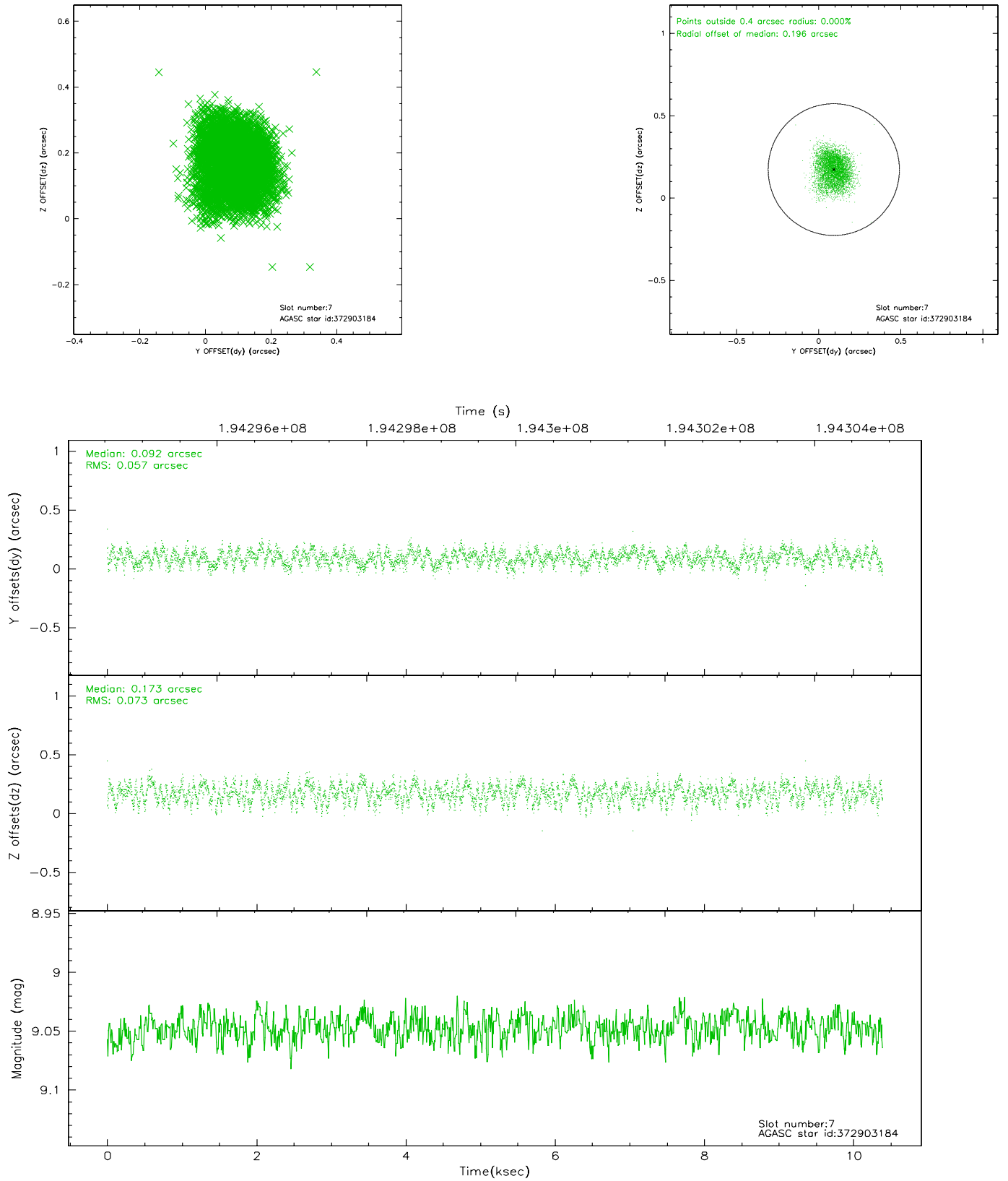
2.4.3 Slot 5



2.4.4 Slot 6

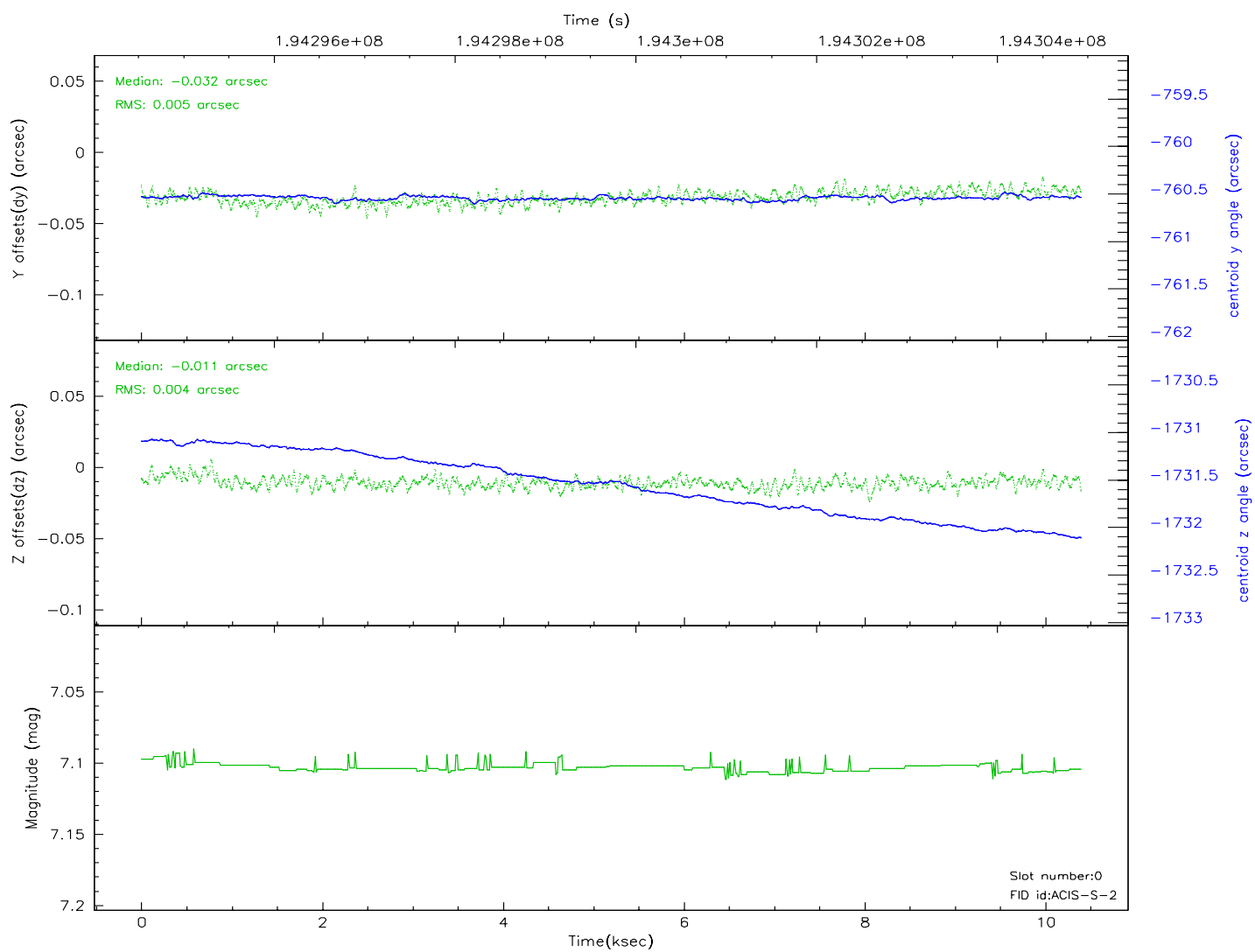
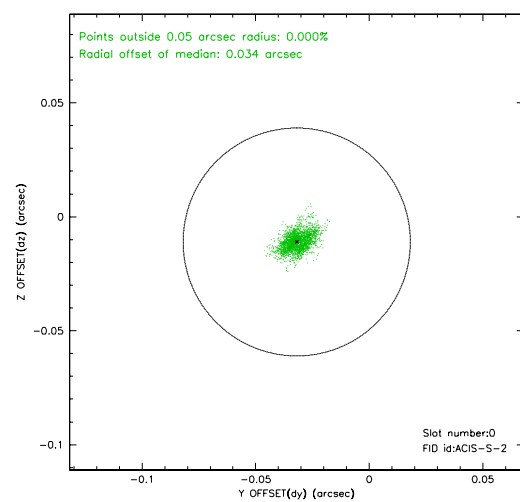
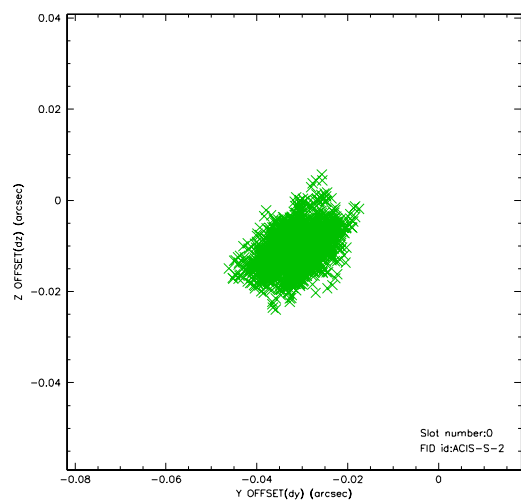


2.4.5 Slot 7

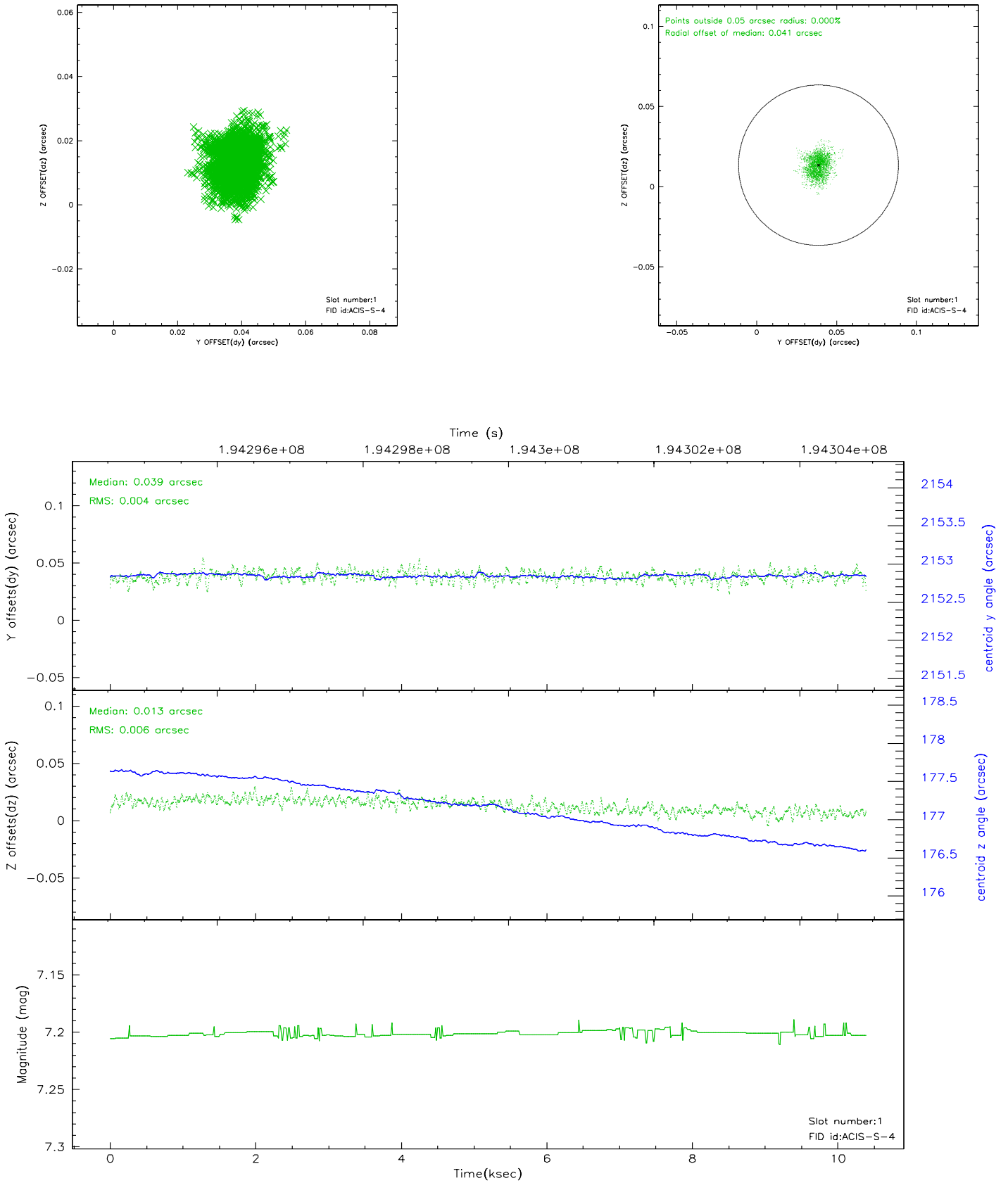


2.5 FID Slots

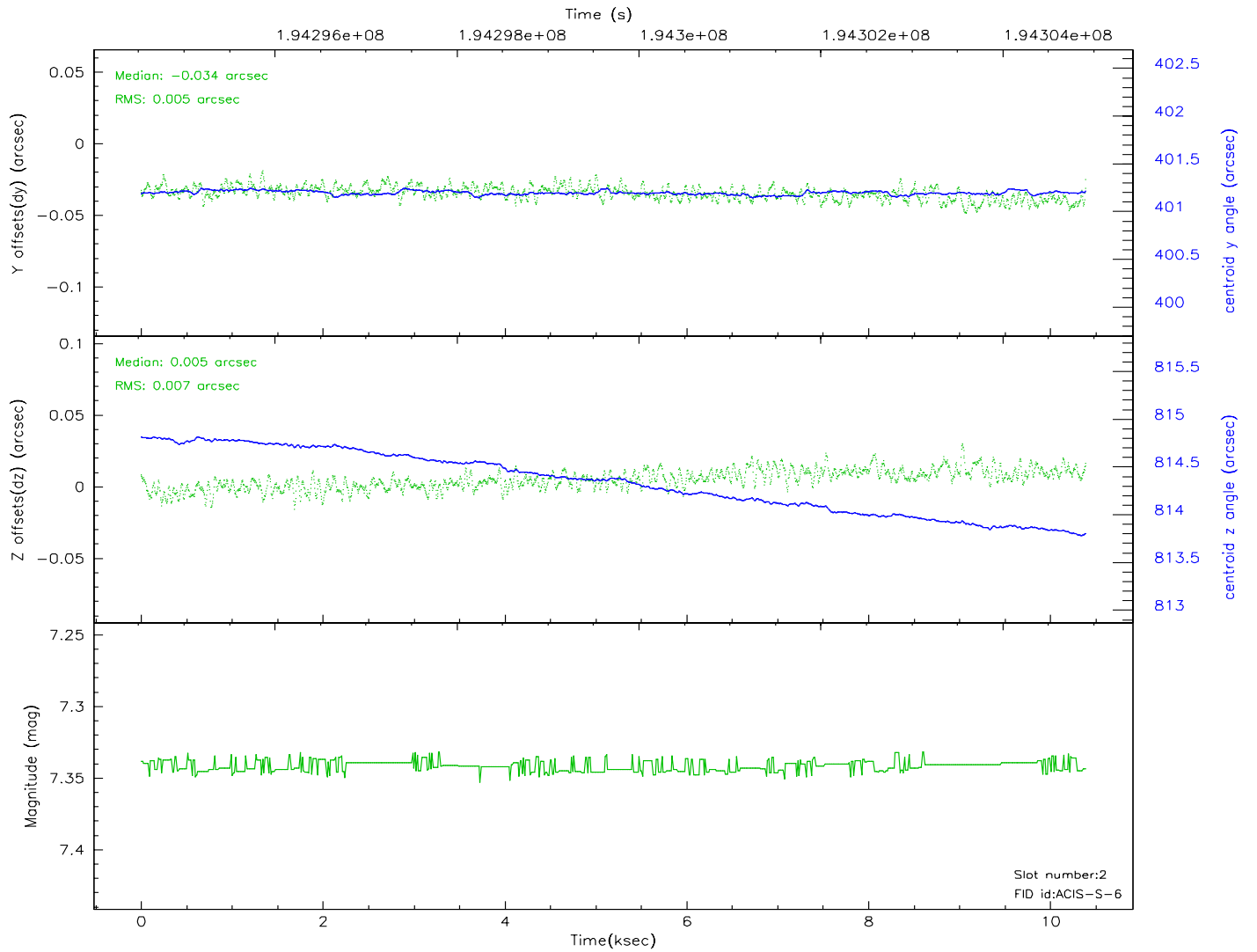
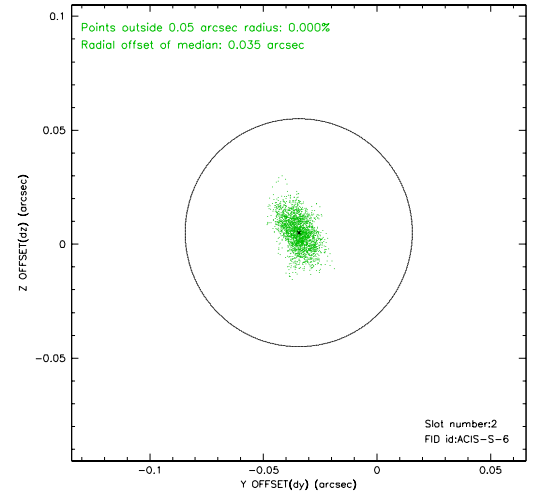
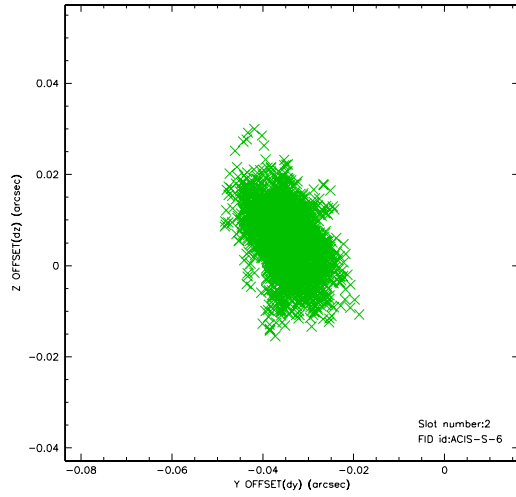
2.5.1 Slot 0



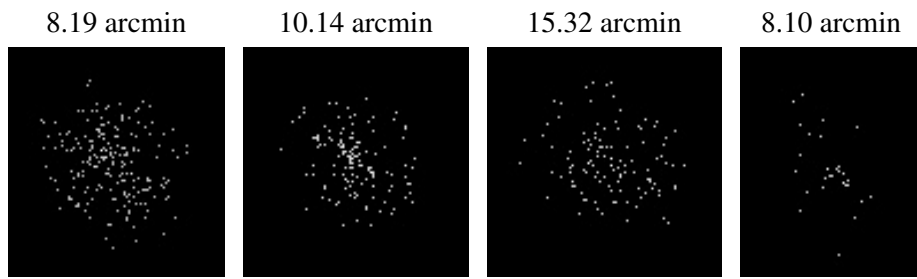
2.5.2 Slot 1



2.5.3 Slot 2



3 Point Sources



A Summary

A.1 Status

V&V Scientist	Jen Lauer
V&V Date (YYYY-MM-DD)	2006.06.06
V&V Edition	1
V&V Disposition and Status	OK
V&V Charge Time	10.372

A.2 Comments

The bias map of fep 4 was missing data due to unrecoverable data loss.
A new bias file was constructed for this chip.