

V&V Reference Report

L2 ASCDS Version : 8.4.5

Observation 4695 - L2 Version 3
Chandra X-Ray Center

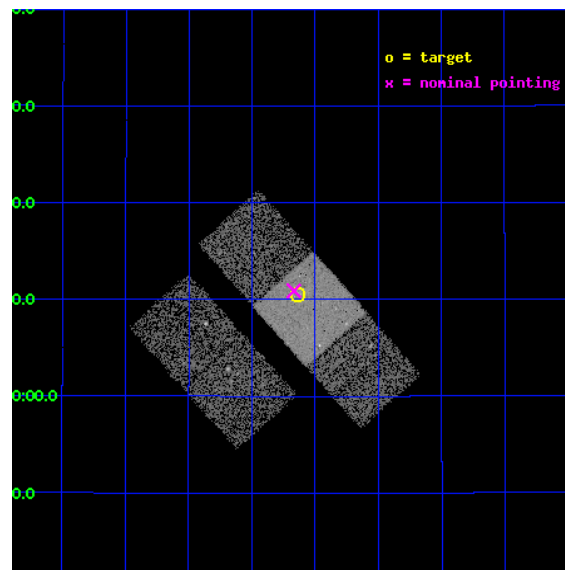
L2 Processing Date : Nov 7 2012

Contents

1	Front	2
2	OBI	3
2.1	OBI	3
2.1.1	Images	3
2.1.2	Bias	3
2.1.3	Parameters	4
2.1.4	Events	4
2.2	Compared Parameters	5
2.3	Aspect	6
2.4	Star Slots	9
2.4.1	Slot 3	9
2.4.2	Slot 4	10
2.4.3	Slot 5	11
2.4.4	Slot 6	12
2.4.5	Slot 7	13
2.5	FID Slots	14
2.5.1	Slot 0	14
2.5.2	Slot 1	15
2.5.3	Slot 2	16
A	Summary	17
A.1	Status	17
A.2	Comments	17

1 Front

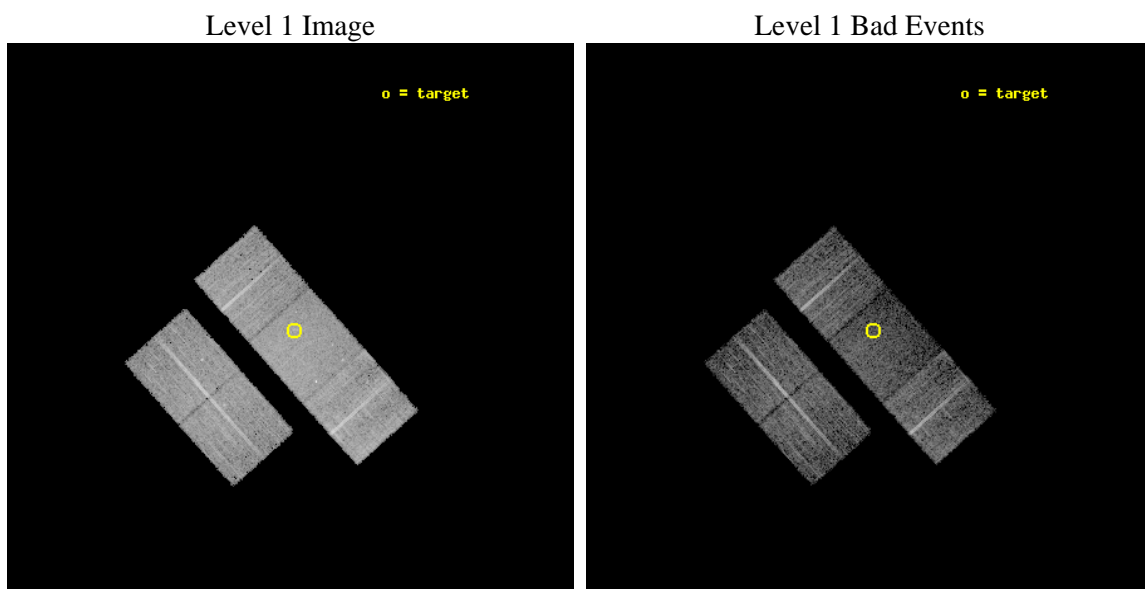
seq_num	600350	Sequence number
obs_id	4695	Observation id
title	Physics of Accretion Flows in Ultra-low Luminosity AGNs: A Mini Survey of a Distance-Limited Sample of Inactive Galaxies	Proposal tit
observer	Dr. Yuichi Terashima	Principal investigator
object	NGC 4251	Source name
dtcycle	0	
cycle	P	events from which exps? Prim/Second/Both
ra_targ	184.533333	Observer's specified target RA [deg]
dec_targ	28.175556	Observer's specified target Dec [deg]
ra_nom	184.5420183766	Nominal RA [deg]
dec_nom	28.181537188336	Nominal Dec [deg]
roll_nom	48.263251927573	Nominal Roll [deg]
revision	3	Processing version of data
ontime	10177.299980402	Sum of GTIs [s]
livetime	10044.326063739	Livetime [s]
ontime2	10177.299980402	Sum of GTIs [s]
ontime3	10177.299980402	Sum of GTIs [s]
ontime6	10174.159020185	Sum of GTIs [s]
ontime7	10177.299980402	Sum of GTIs [s]
ontime8	10174.158990264	Sum of GTIs [s]
l2events	43555	Number of level 2 events



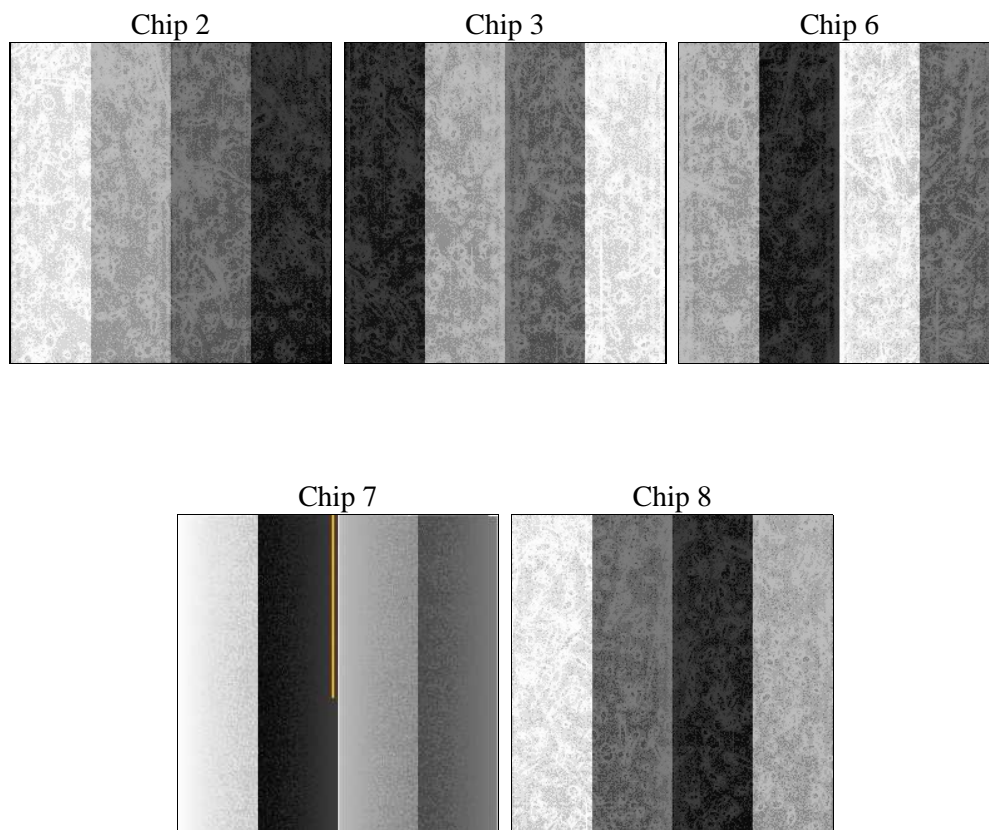
2 OBI

2.1 OBI

2.1.1 Images



2.1.2 Bias



2.1.3 Parameters

obi_num	0	Obi number	sched_exp_time	10000.000000	[s] Scheduled observation exposure time
ascdsver	8.4.5	Processing system revision	ontime	10177.299980402	Sum of GTIs [s]
caldsver	4.5.2	 	ontime2	10177.299980402	Sum of GTIs [s]
date	2012-11-08T02:07:28	Date and time of file creation	ontime3	10177.299980402	Sum of GTIs [s]
revision	3	Processing version of data	ontime6	10174.159020185	Sum of GTIs [s]
			ontime7	10177.299980402	Sum of GTIs [s]
			ontime8	10174.158990264	Sum of GTIs [s]
			l1events	292032	Number of level 1 events

2.1.4 Events

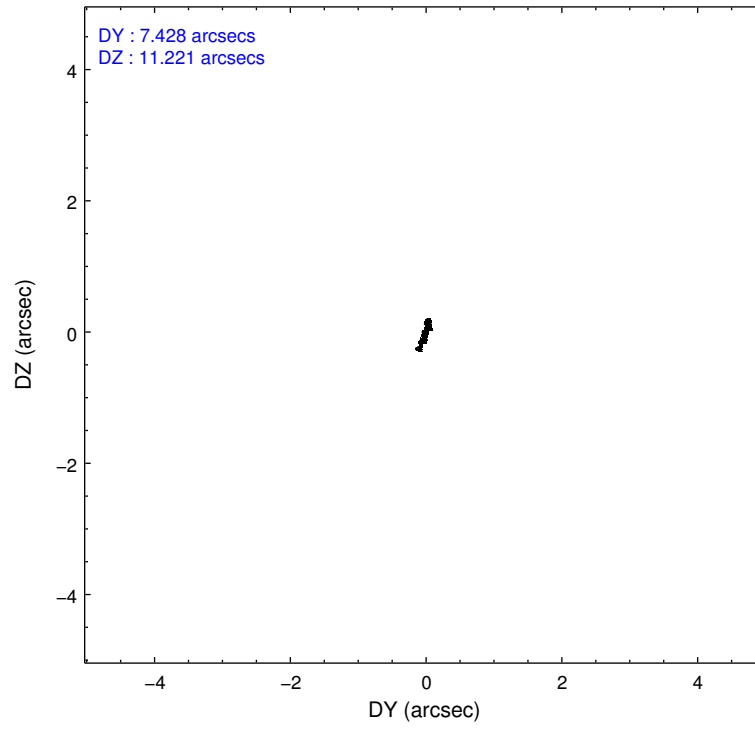
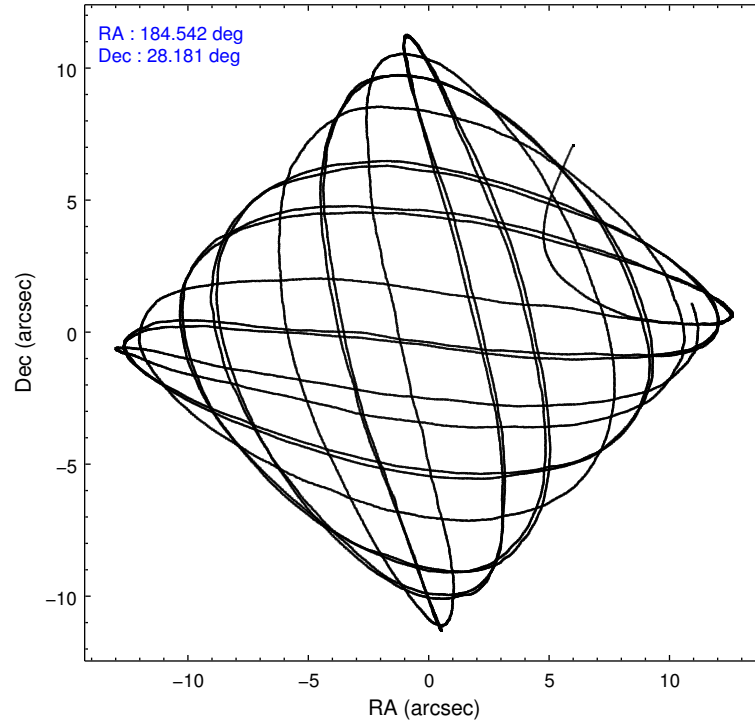
	ccd 2	ccd 3	ccd 6	ccd 7	ccd 8
level 1 events	53723	52638	55234	62003	68434
rejected events	48584	47669	49794	36194	53893
rejected %	90%	90%	90%	58%	78%

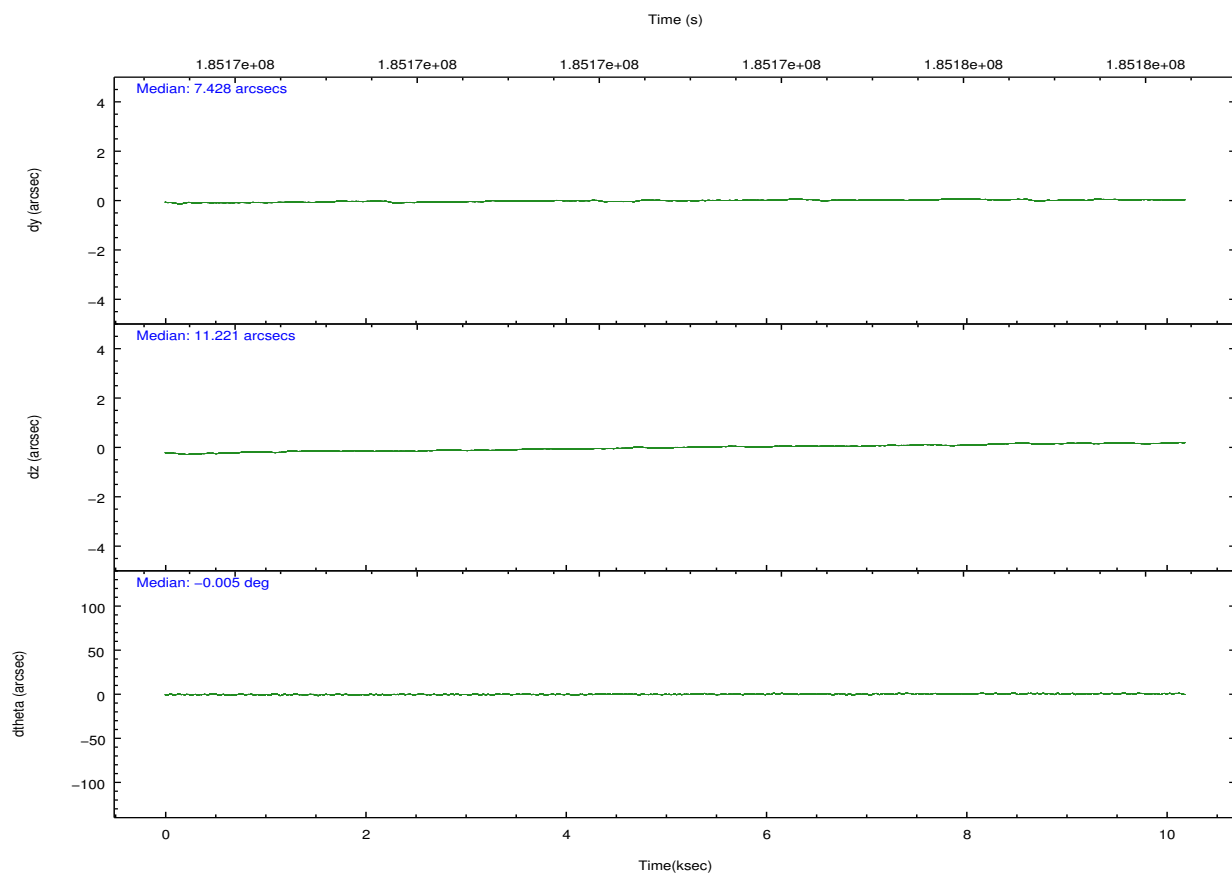
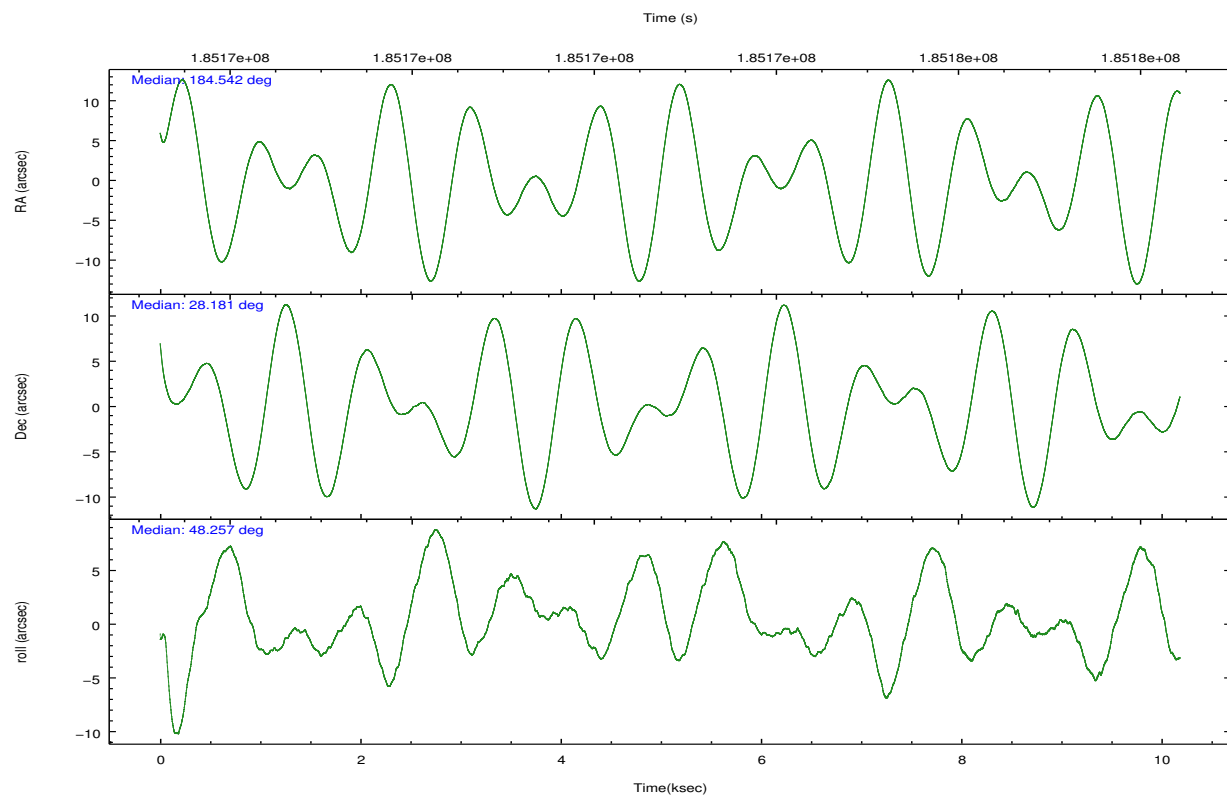
	ccd 2	ccd 3	ccd 6	ccd 7	ccd 8
grade 0 events	2184	2140	2226	3118	5144
	4%	4%	4%	5%	7%
grade 1 events	25	24	30	44	54
	0%	0%	0%	0%	0%
grade 2 events	1296	1161	1275	5942	3555
	2%	2%	2%	9%	5%
grade 3 events	641	577	653	2681	1828
	1%	1%	1%	4%	2%
grade 4 events	621	633	700	2831	1686
	1%	1%	1%	4%	2%
grade 5 events	1844	2106	2215	6513	2979
	3%	4%	4%	10%	4%
grade 6 events	1007	1085	1294	14415	4164
	1%	2%	2%	23%	6%
grade 7 events	46105	44912	46841	26459	49024
	85%	85%	84%	42%	71%

2.2 Compared Parameters

Parameter	Planned	Actual	Parameter	Planned	Actual
Instrument	ACIS	ACIS	Obspar format version number	7	7
Detector	ACIS-23678	ACIS-23678	Obspar file type	PREDICTED	ACTUAL
Grating	NONE	NONE	Obspar update status	NONE	UPDATED
Data mode	VFAINT	VFAINT	Number of optional ACIS chips dropped	0	0
Observation mode	POINTING	POINTING	On-chip summing requested	N	N
[deg] Pointing RA	184.536084	184.5420183766003	Subarray requested	NONE	NONE
[deg] Pointing Dec	28.154792	28.18153718833642	Alternating exposures requested	N	N
[deg] Pointing Roll	48.109432	48.26325192757298	[s] Primary exposure time	0.000000	3.1
[mm] SIM focus pos	-0.684267	-0.6828225247311905			
[mm] SIM defocus	0	0.001444936568705701			
[mm] SIM translation stage pos	-190.132523	-190.1400660498719			
[mm] SIM translation stage offset	0	0.00754346686406393			
[s] Observation start time (MET)	185167921.184000	185166278.49345			
Observation start date	2003-11-14T03:30:57	2003-11-14T03:04:38			
[s] Observation end time (MET)	185177921.184000	185178395.53148			
Observation end date	2003-11-14T06:17:37	2003-11-14T06:26:35			
Read mode	TIMED	TIMED			

2.3 Aspect



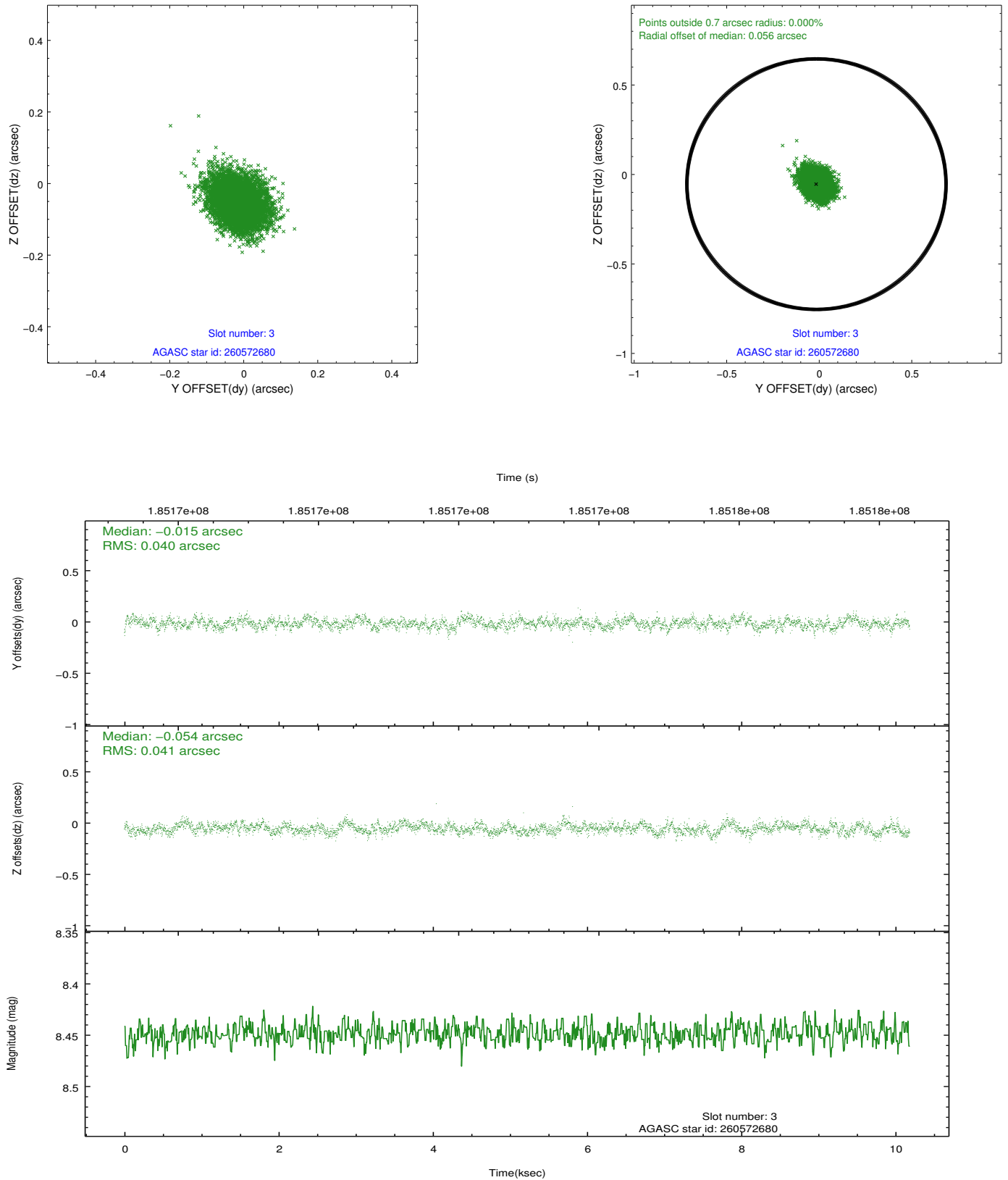


Slot Statistics

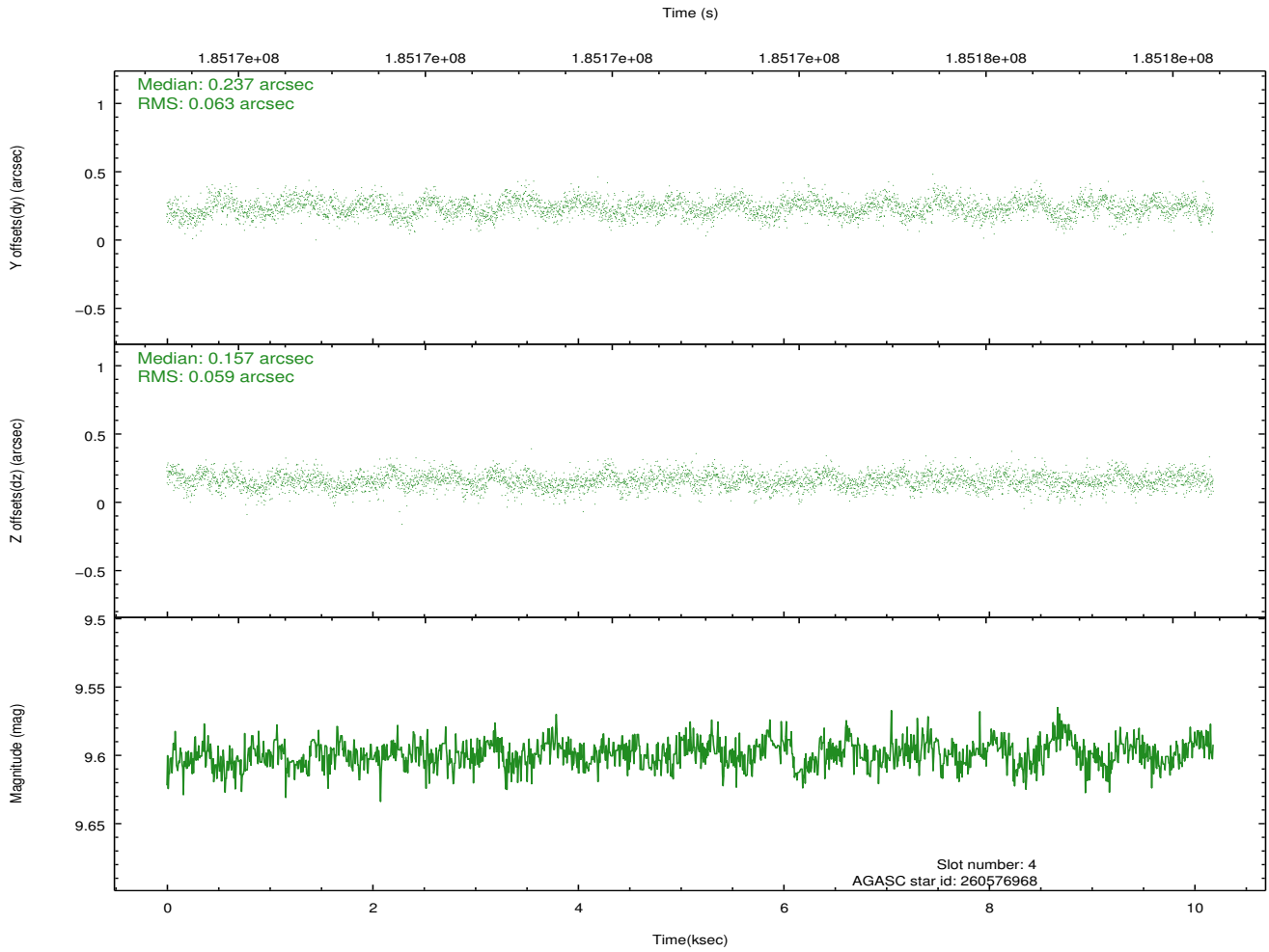
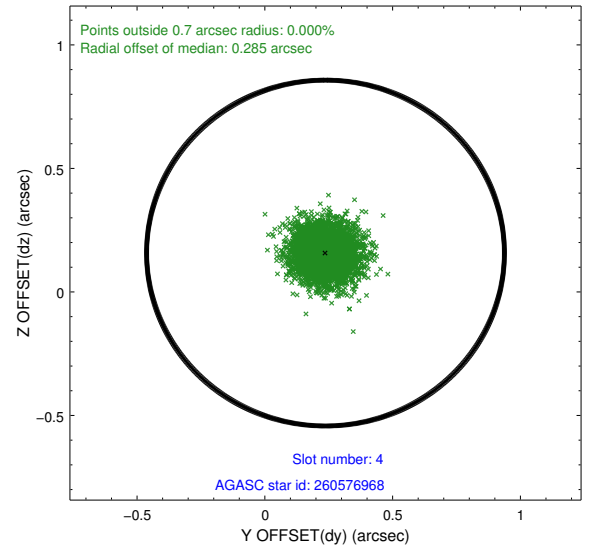
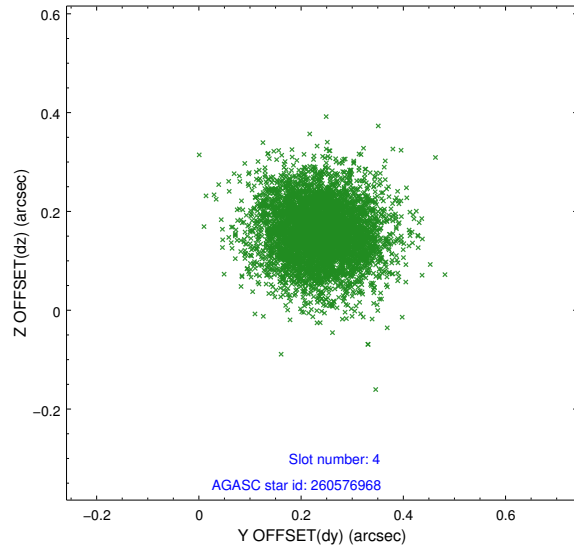
slot	status	id	mag	n_pts	med_dy	med_dz	dr1	dr2	ra	dec	mean_y	mean_z
0	FID	ACIS-S-2	7.10	2484	-0.032	-0.006	0.008	0.012	0.000000	0.000000	-760.19	-1732.50
1	FID	ACIS-S-4	7.20	2484	0.053	0.017	0.006	0.011	0.000000	0.000000	2152.91	175.51
2	FID	ACIS-S-5	7.23	2484	-0.052	-0.002	0.007	0.011	0.000000	0.000000	-1812.41	169.70
3	GUIDE	260572680	8.45	4966	-0.015	-0.054	0.061	0.099	184.010427	28.048682	-1396.90	990.67
4	GUIDE	260576968	9.60	4965	0.237	0.157	0.091	0.149	184.148082	27.653037	-2169.39	-283.38
5	GUIDE	260965760	8.96	4967	0.029	0.005	0.079	0.124	184.753472	28.047993	174.28	-770.00
6	GUIDE	260969480	9.08	4969	-0.134	-0.197	0.080	0.131	184.329513	28.726397	1096.49	1860.08
7	GUIDE	260973208	7.02	4968	-0.115	0.091	0.066	0.102	184.960936	28.464352	1729.26	-254.37

2.4 Star Slots

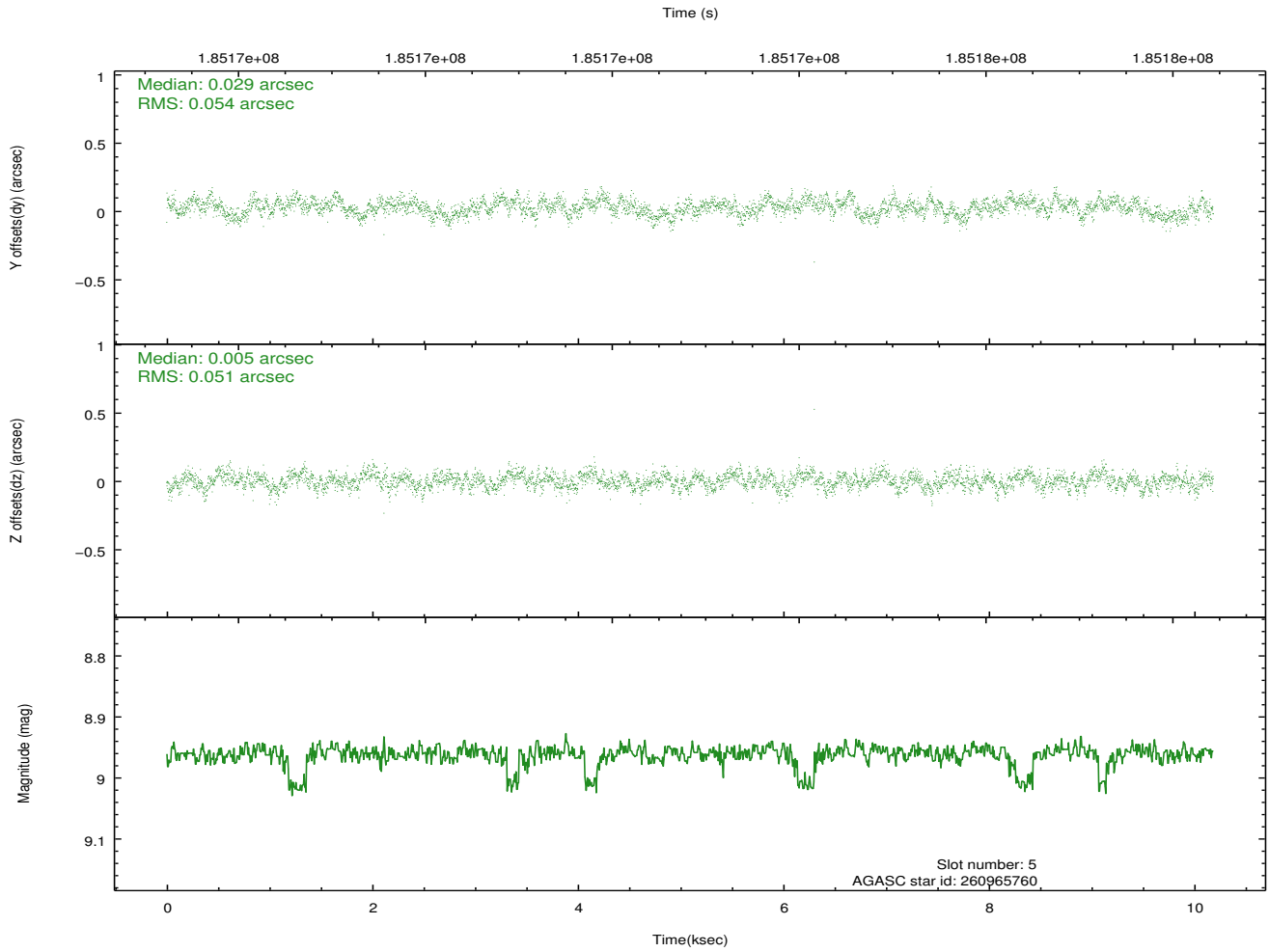
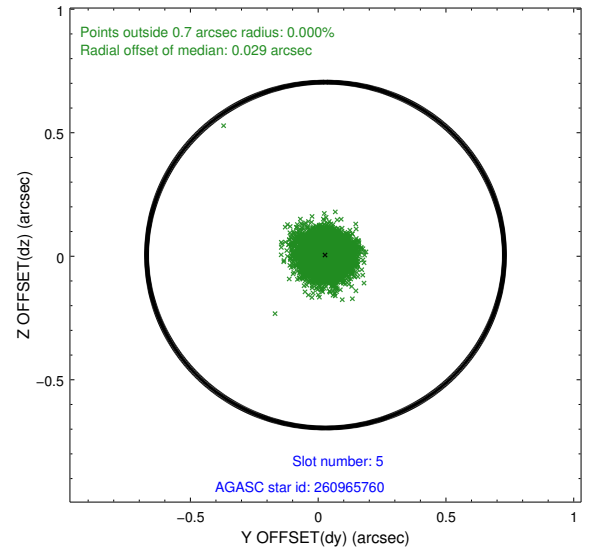
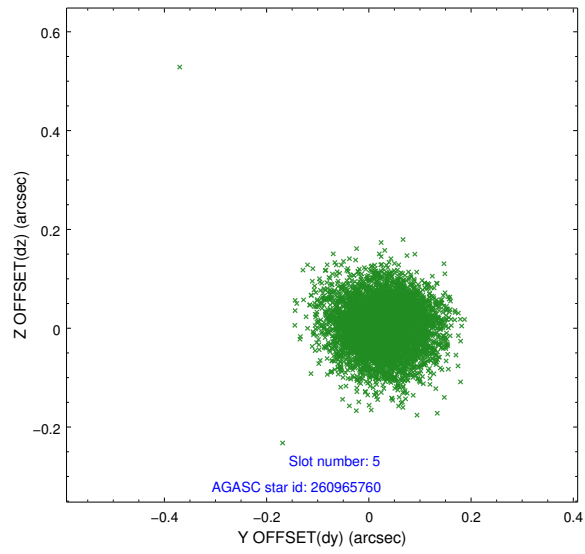
2.4.1 Slot 3



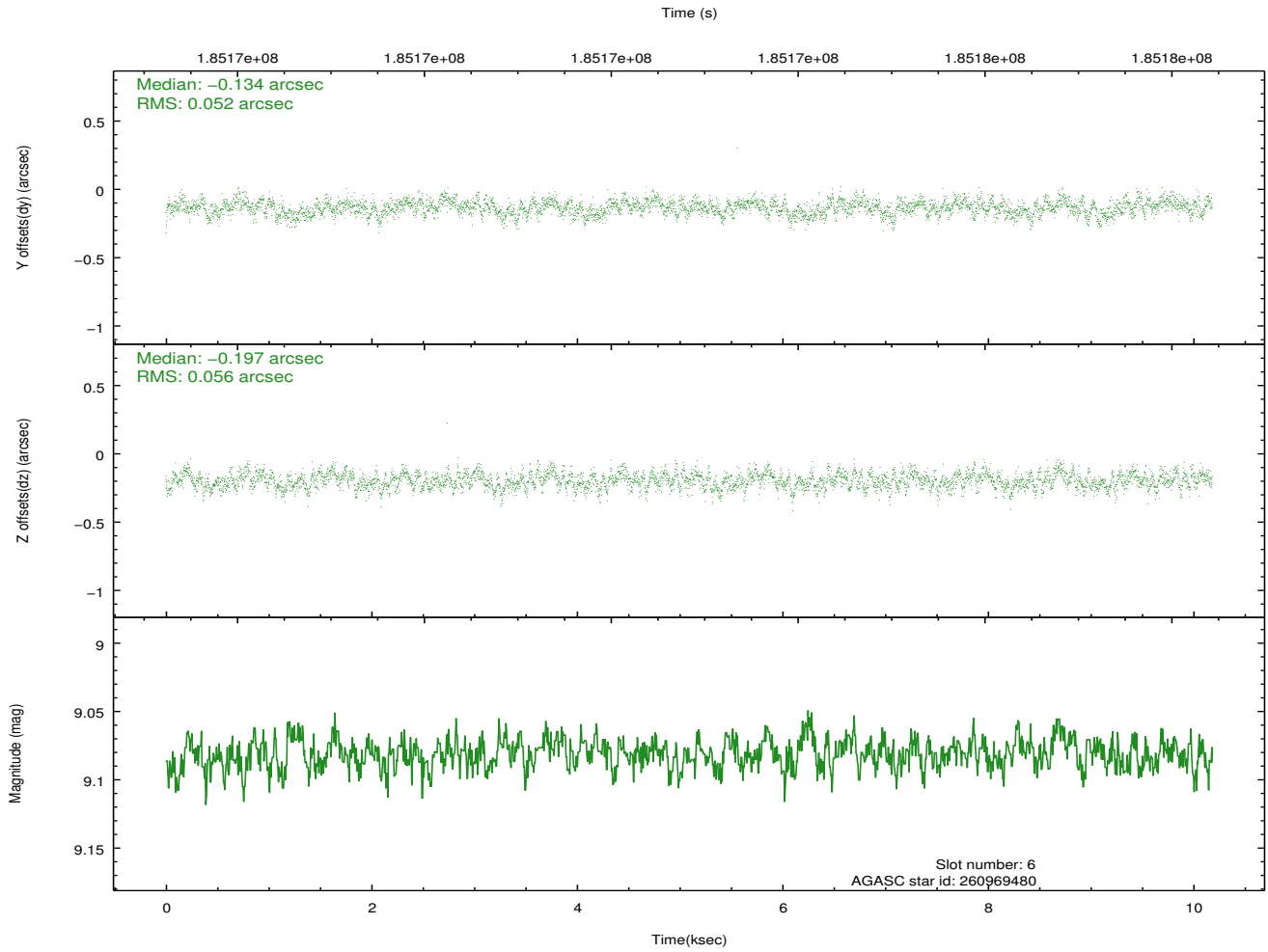
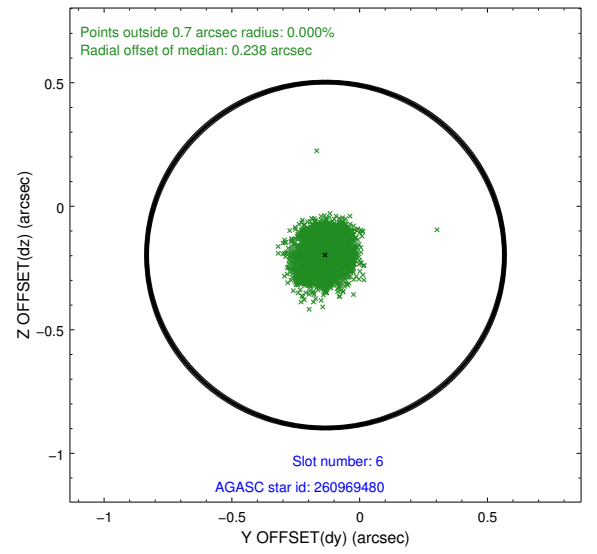
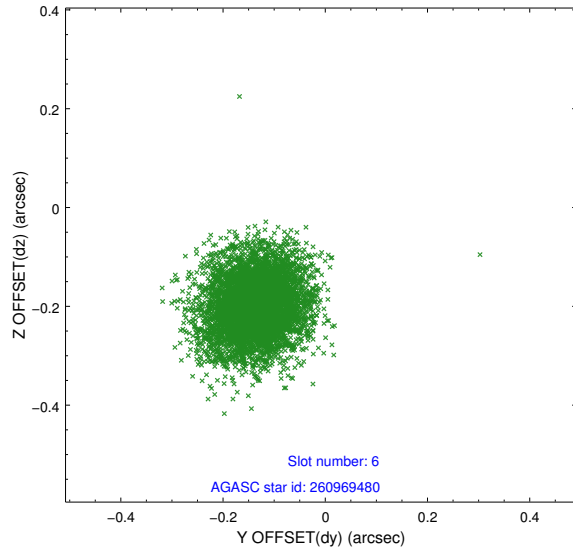
2.4.2 Slot 4



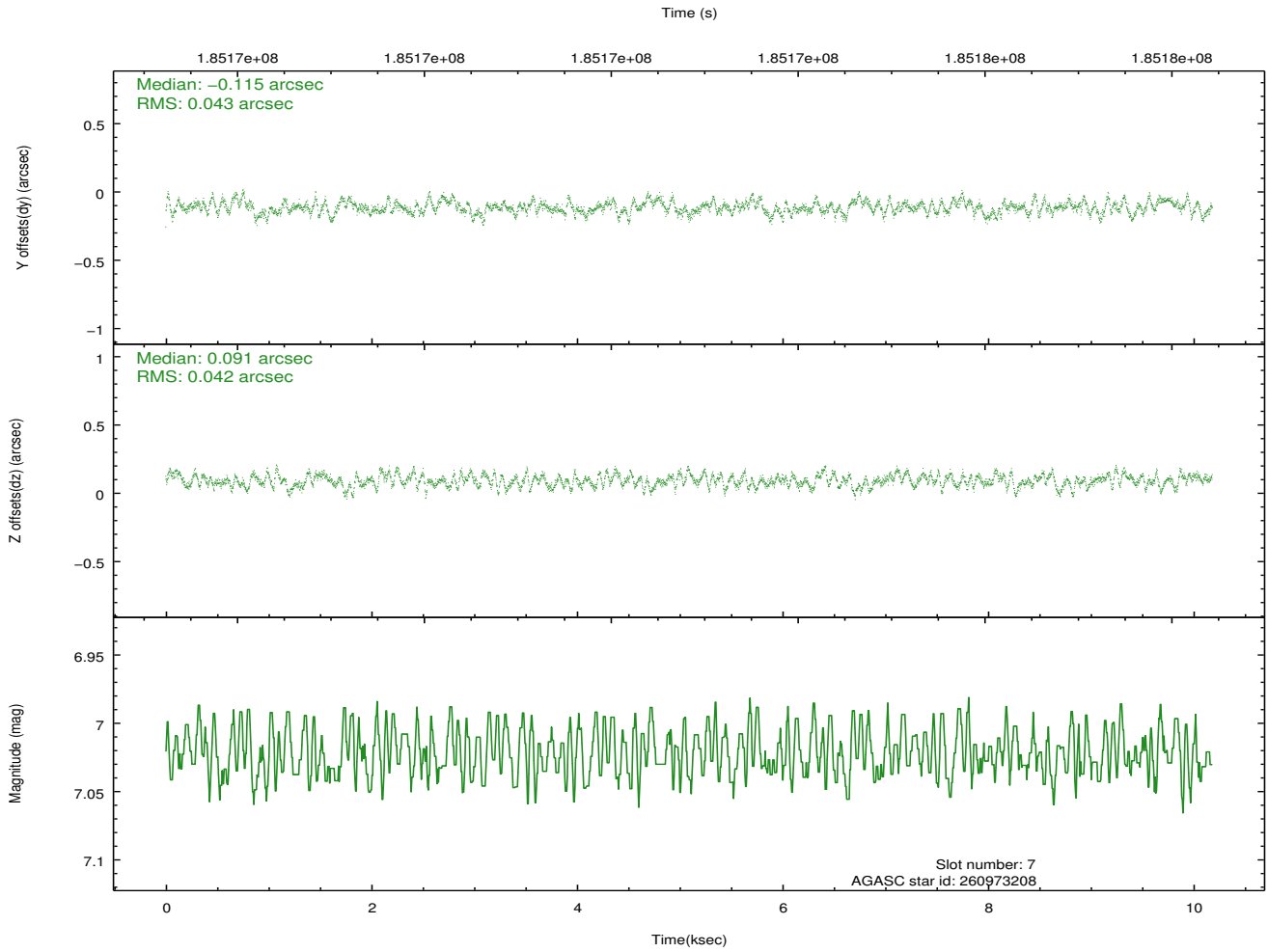
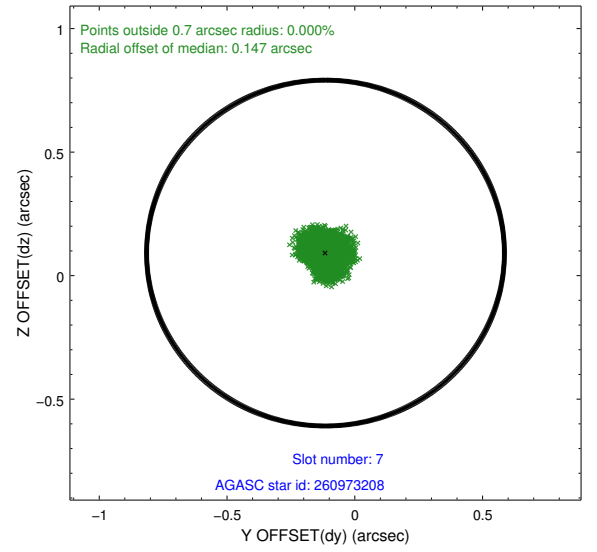
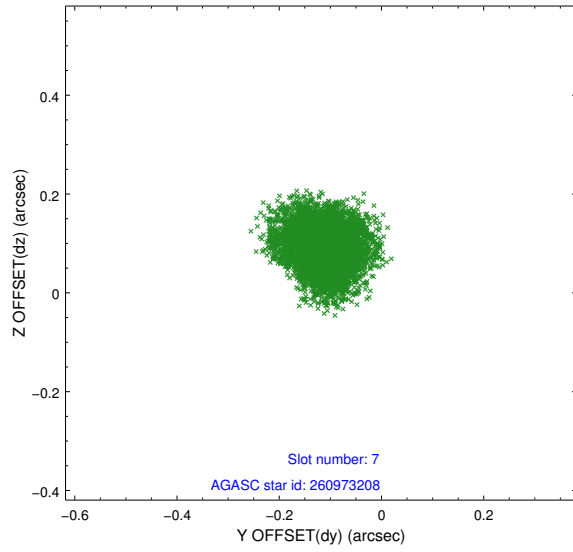
2.4.3 Slot 5



2.4.4 Slot 6

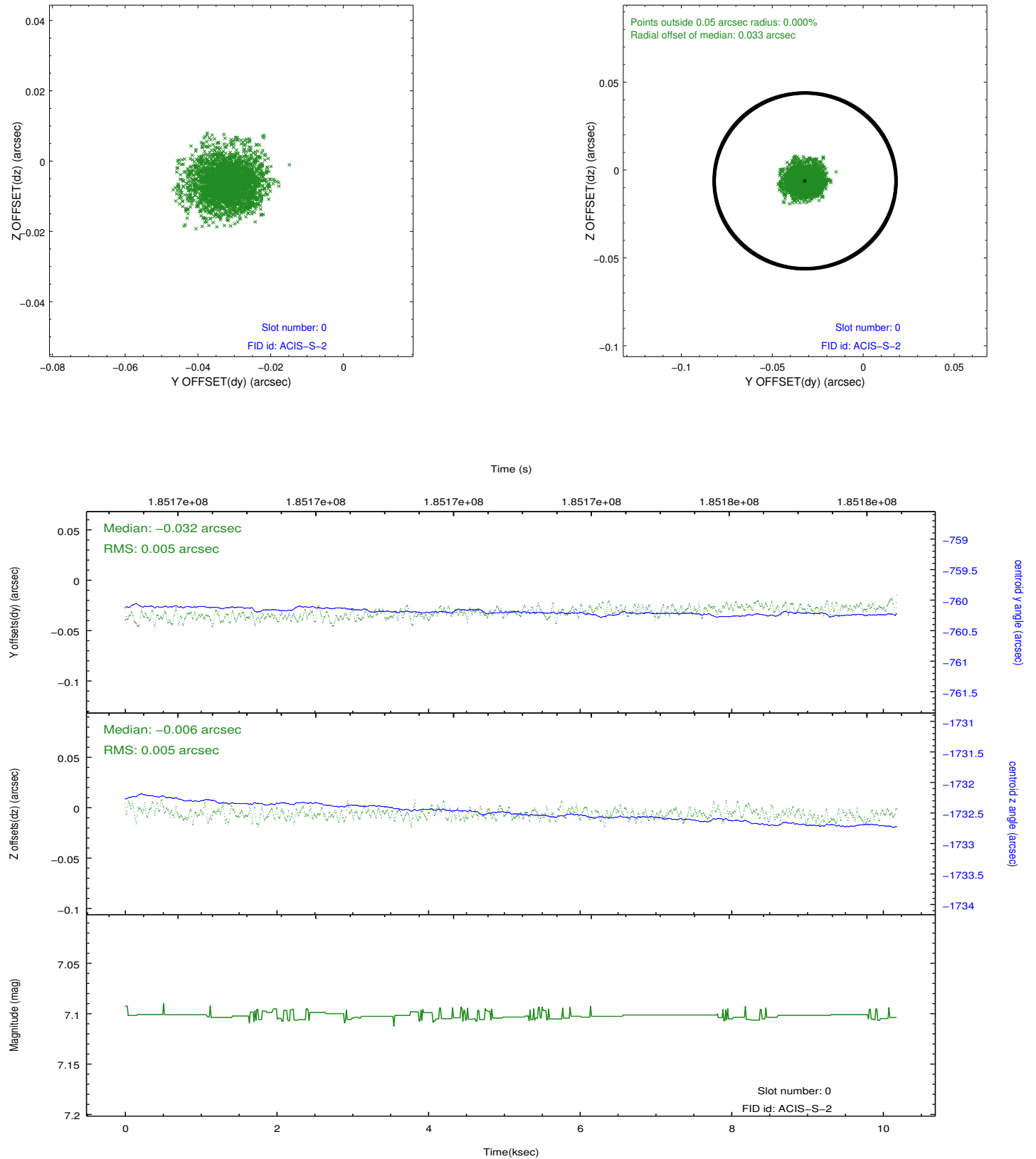


2.4.5 Slot 7

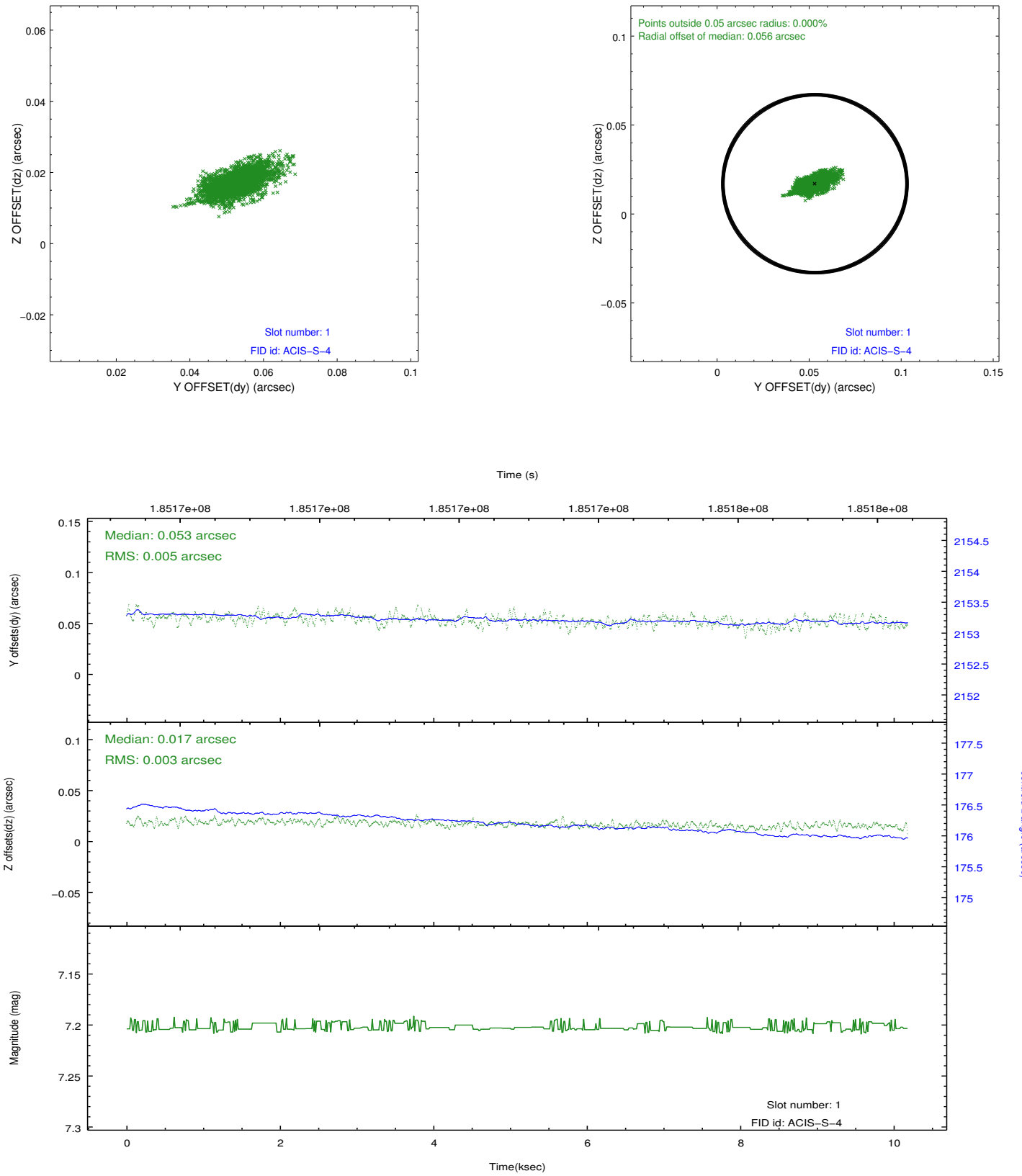


2.5 FID Slots

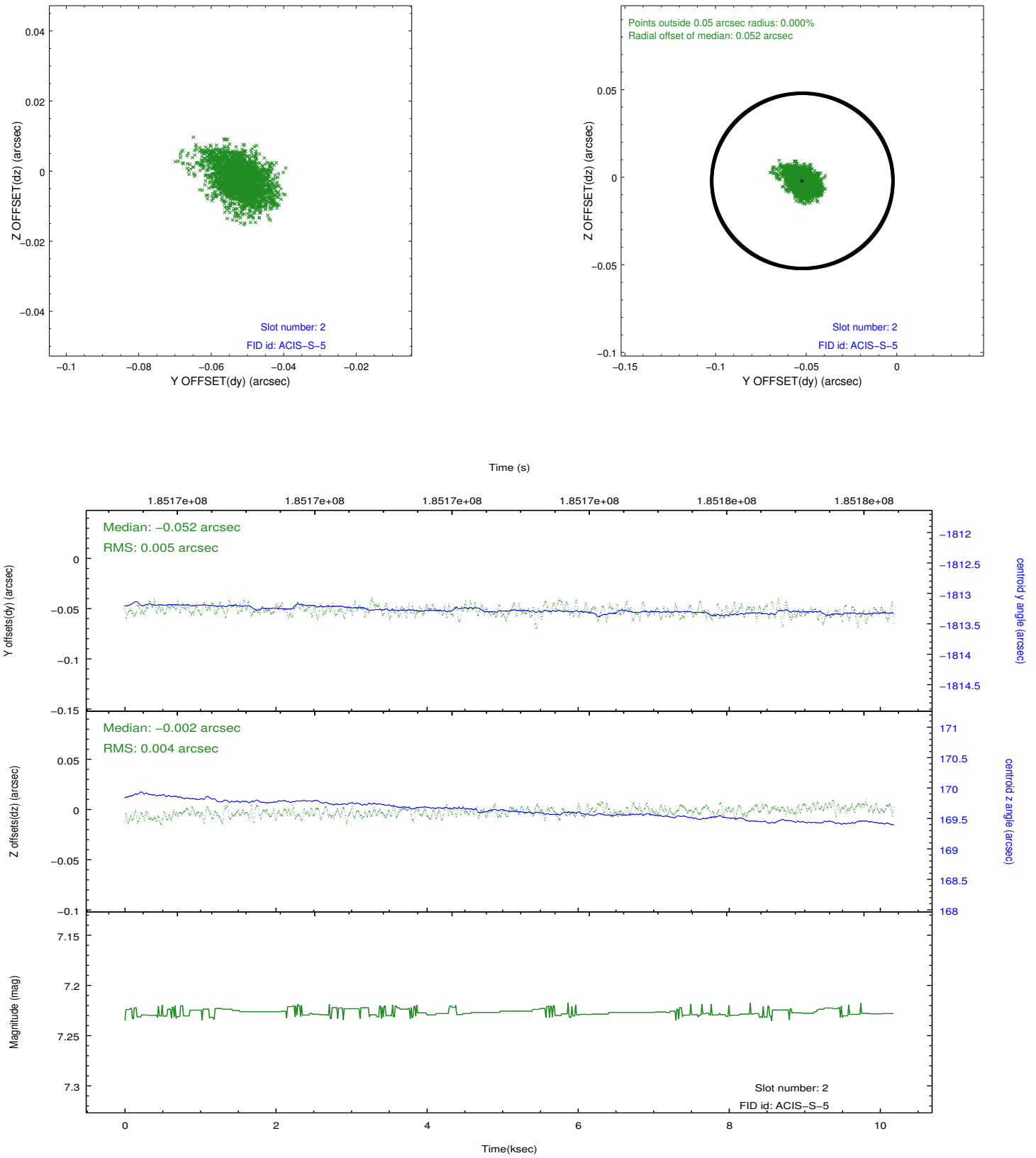
2.5.1 Slot 0



2.5.2 Slot 1



2.5.3 Slot 2



A Summary

A.1 Status

V&V Scientist	Jen Lauer
V&V Date (YYYY-MM-DD)	2012.12.02
V&V Edition	1
V&V Disposition and Status	OK
V&V Charge Time	10.177

A.2 Comments