

V&V Reference Report

L2 ASCDS Version : 7.6.7

Observation 4693 - L2 Version 002
Chandra X-Ray Center

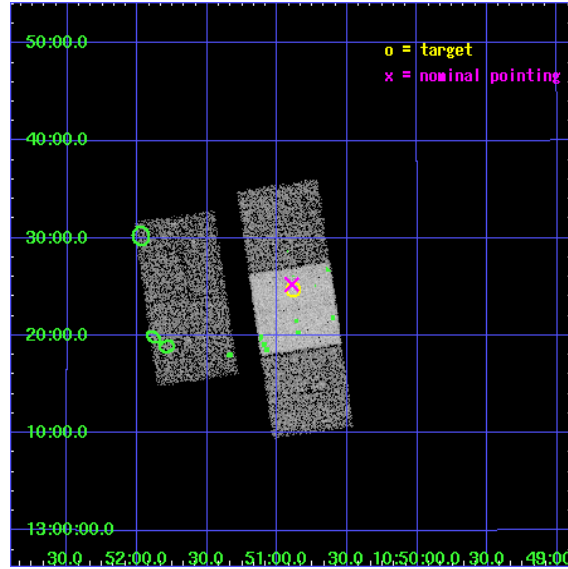
L2 Processing Date: Feb 21 2006

Contents

1	Front	2
2	OBI	3
2.1	OBI	3
2.1.1	Images	3
2.1.2	Bias	3
2.1.3	Parameters	4
2.1.4	Events	4
2.2	Compared Parameters	5
2.3	Aspect	6
2.4	Star Slots	9
2.4.1	Slot 3	9
2.4.2	Slot 4	10
2.4.3	Slot 5	11
2.4.4	Slot 6	12
2.4.5	Slot 7	13
2.5	FID Slots	14
2.5.1	Slot 0	14
2.5.2	Slot 1	15
2.5.3	Slot 2	16
3	Point Sources	17
A	Summary	18
A.1	Status	18
A.2	Comments	18

1 Front

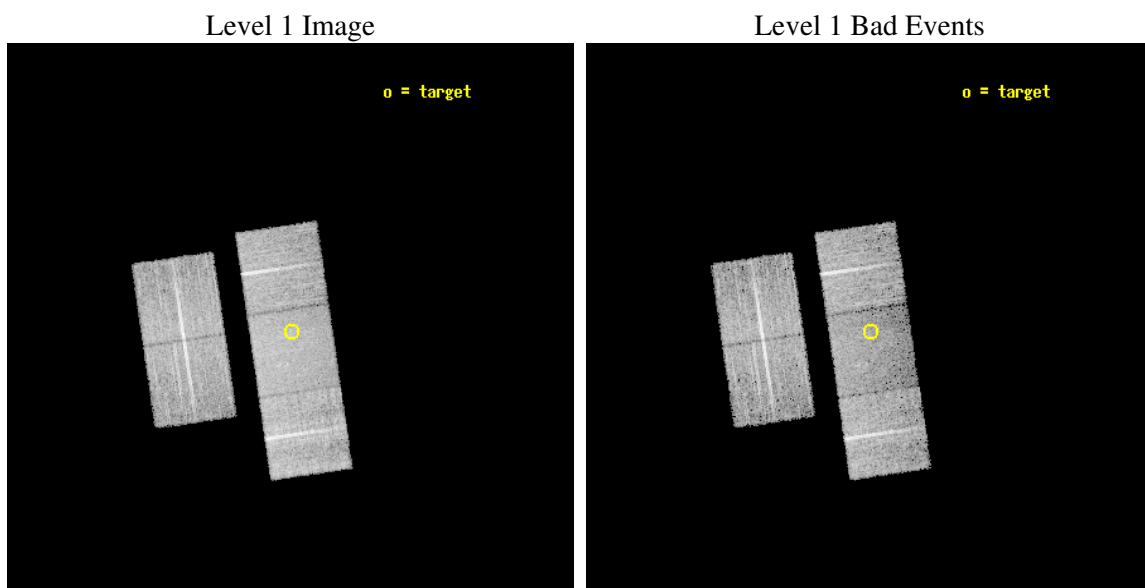
seq_num	600348
obs_id	4693
title	Physics of Accretion Flows in Ultra-low Luminosity AGNs: A Mini Survey of a Distance-Limited Sample of Inactive Galaxies
observer	Dr. Yuichi Terashima
object	NGC 3412
dtcycle	0
cycle	P
ra_targ	162.720833
dec_targ	13.411944
ra_nom	162.72397978681
dec_nom	13.42108072944
roll_nom	81.676432009564
revision	2
ontime	10090.499980599
livetime	9958.6601698342
ontime2	10090.499980599
ontime3	10087.358980417
ontime6	10090.499980599
ontime7	10090.499980599
ontime8	10090.499980599
l2events	49312



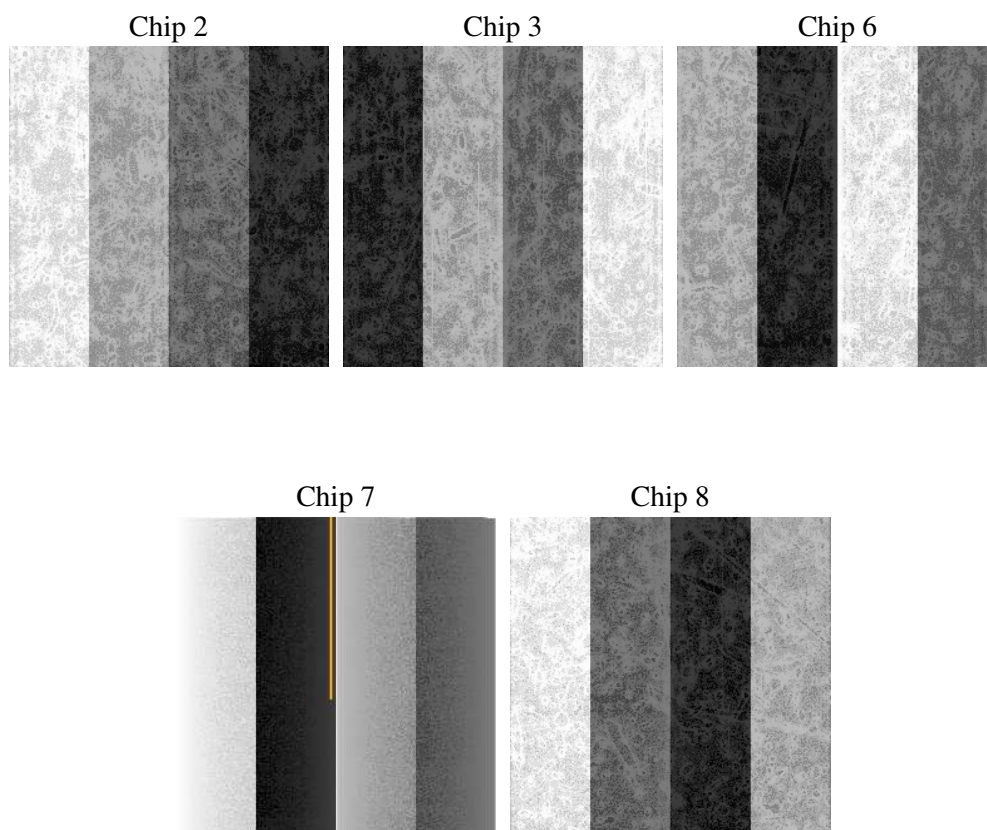
2 OBI

2.1 OBI

2.1.1 Images



2.1.2 Bias



2.1.3 Parameters

obi_num	3
ascdsver	7.6.7
caldbver	3.2.1
date	2006-02-21T23:35:03
revision	2

sched_exp_time	10000.000000
ontime	10095.216386795
ontime2	10095.216386795
ontime3	10092.075386614
ontime6	10095.216386795
ontime7	10095.216386795
ontime8	10095.216386795
llevents	332291

2.1.4 Events

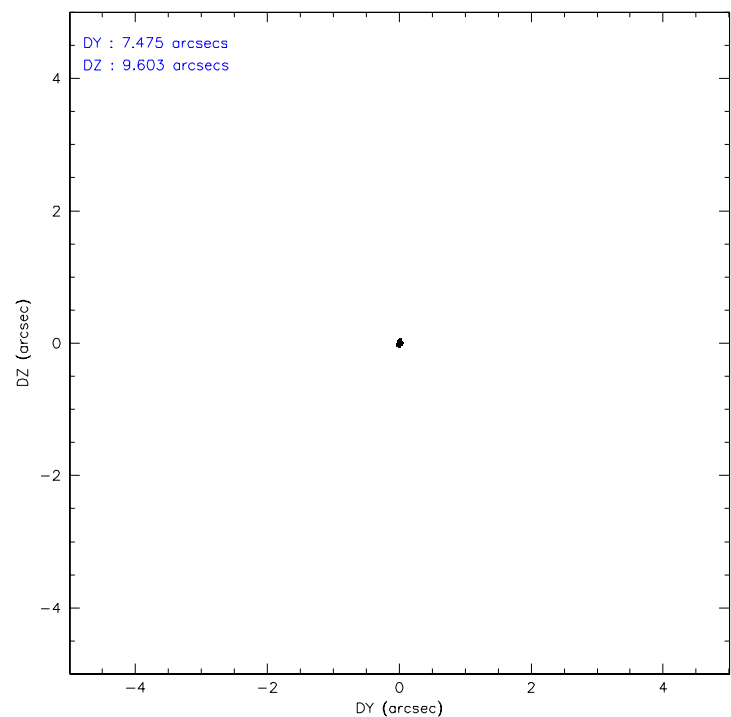
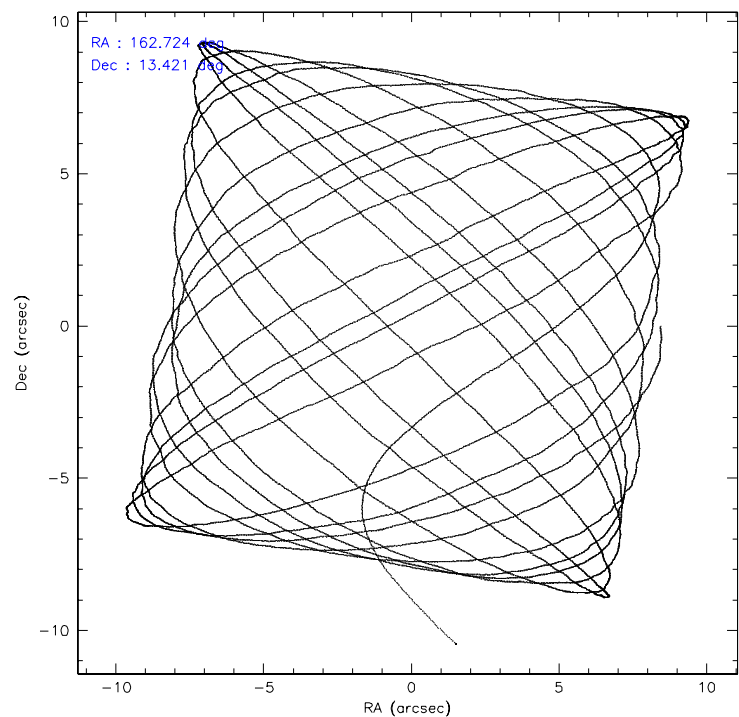
	ccd 2	ccd 3	ccd 6	ccd 7	ccd 8
level 1 events	63650	59468	62982	69159	77032
rejected events	58008	53883	56633	40717	59343
rejected %	91%	90%	89%	58%	77%

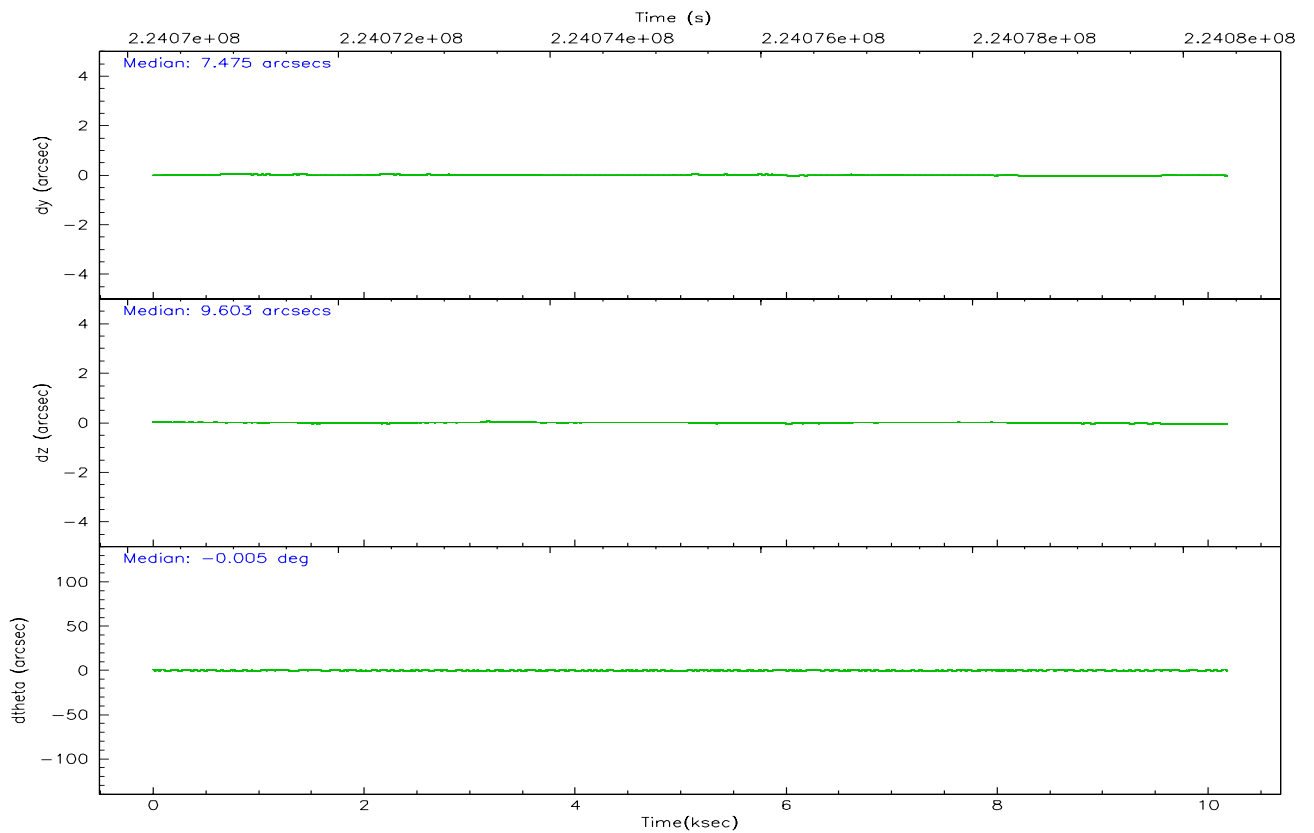
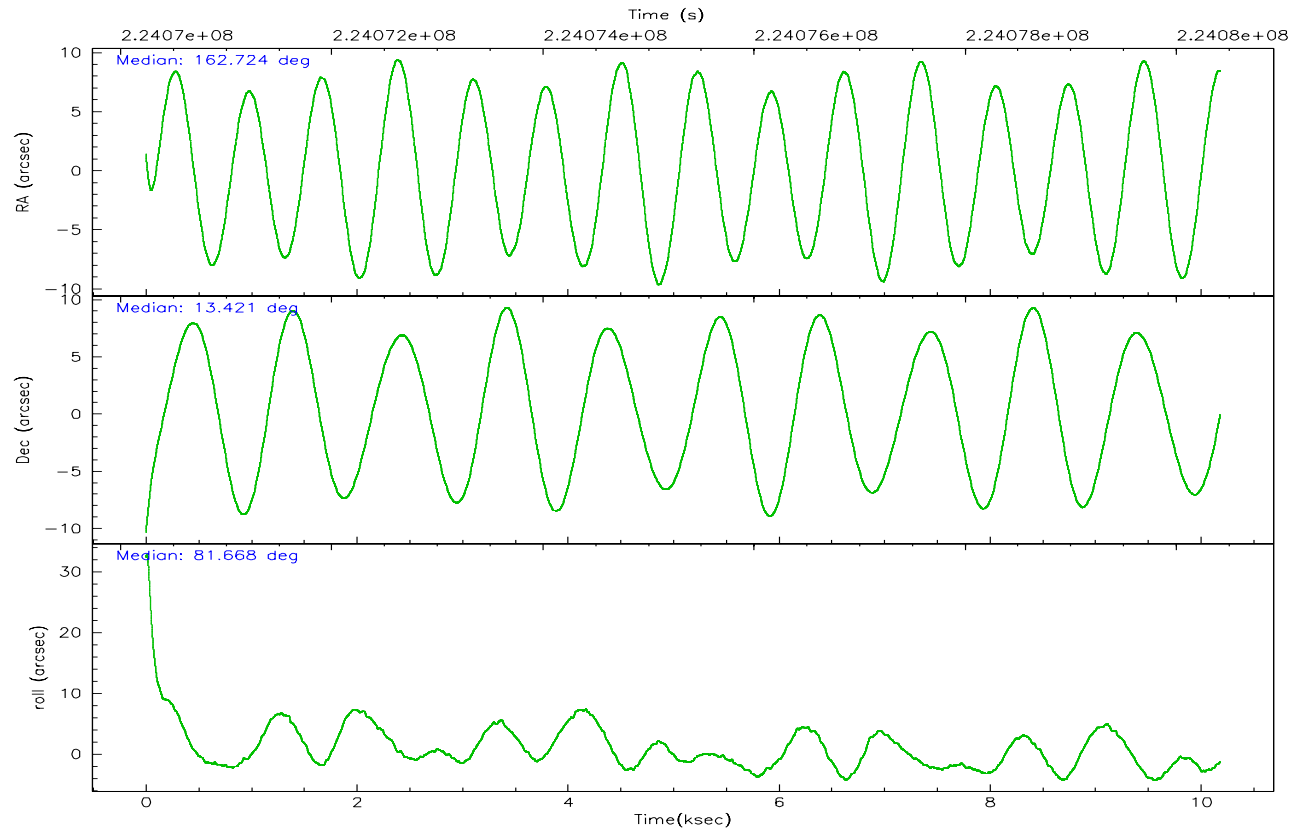
	ccd 2	ccd 3	ccd 6	ccd 7	ccd 8
grade 0 events	1957	1979	2156	1608	5411
	3%	3%	3%	2%	7%
grade 1 events	33	33	29	38	64
	0%	0%	0%	0%	0%
grade 2 events	1285	1172	1423	7088	3810
	2%	1%	2%	10%	4%
grade 3 events	633	628	723	1545	2057
	0%	1%	1%	2%	2%
grade 4 events	673	685	692	1468	1944
	1%	1%	1%	2%	2%
grade 5 events	2127	2396	2426	4953	3409
	3%	4%	3%	7%	4%
grade 6 events	1094	1121	1358	16740	4483
	1%	1%	2%	24%	5%
grade 7 events	55848	51454	54175	35719	55854
	87%	86%	86%	51%	72%

2.2 Compared Parameters

Parameter	Planned	Actual	Parameter	Planned	Actual
Instrument	ACIS	ACIS	Obspar format version number	6	6
Detector	ACIS-23678	ACIS-23678	Obspar file type	PREDICTED	ACTUAL
Grating	NONE	NONE	Obspar update status	NONE	UPDATED
Data mode	VFAINT	VFAINT	On-chip summing requested	N	N
Observation mode	POINTING	POINTING	Subarray requested	NONE	NONE
Pointing RA	162.734667	162.7239797868071	Alternating exposures requested	N	N
Pointing Dec	13.395946	13.42108072943954	Primary exposure time	0.000000	3.1
Pointing Roll	81.517307	81.67643200956358			
SIM focus pos (mm)	-0.684267	-0.6828225247311905			
SIM defocus (mm)	0	0.001444936568705701			
SIM translation stage pos (mm)	-190.132523	-190.1425803651734			
SIM translation stage offset (mm)	0	0.01005778216563158			
Observation start time	224070422.184000	224069458.21643			
Observation start date	2005-02-06T09:45:58	2005-02-06T09:30:58			
Observation end time	224080422.184000	224081560.39198			
Observation end date	2005-02-06T12:32:38	2005-02-06T12:52:40			
Read mode	TIMED	TIMED			

2.3 Aspect



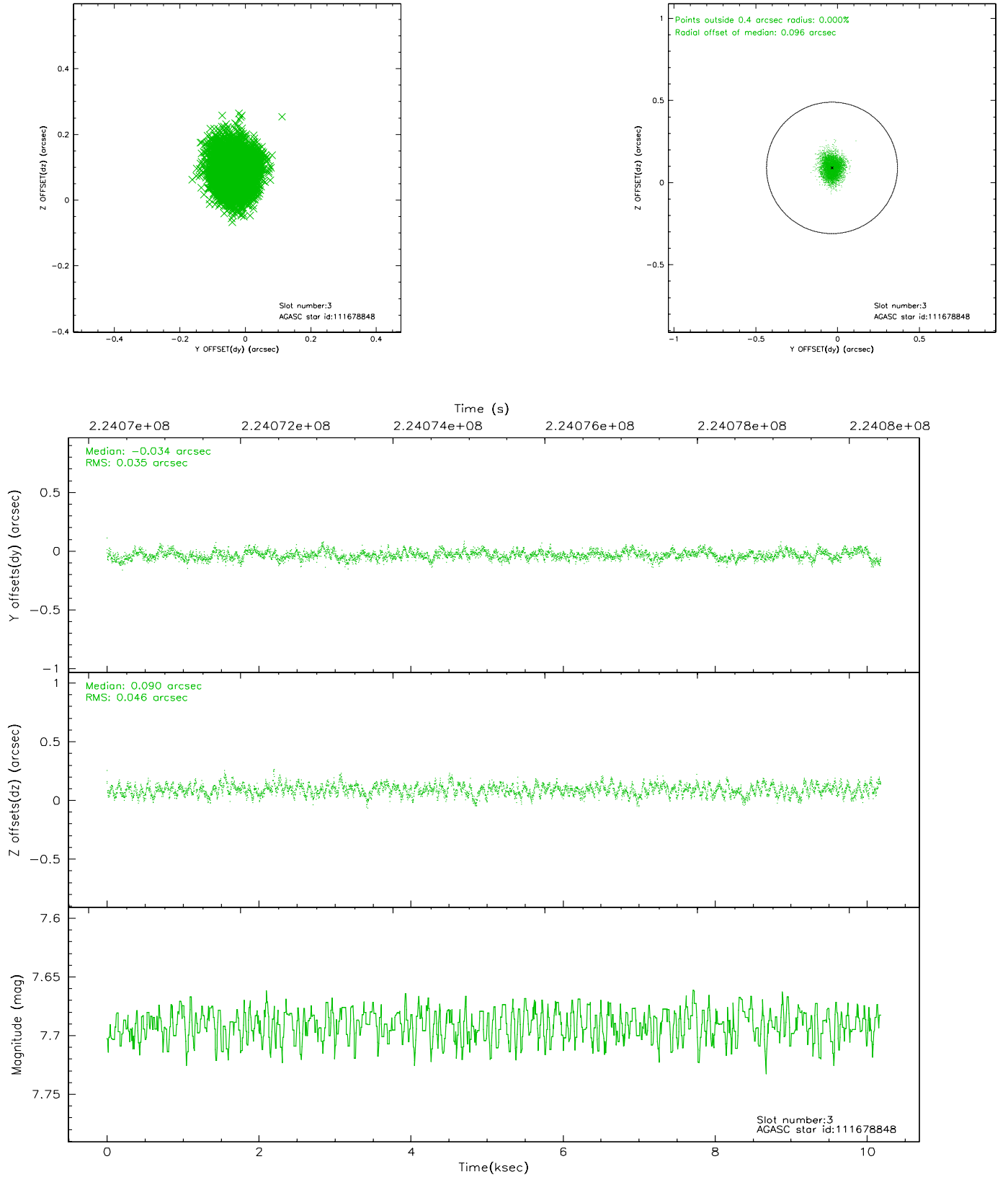


Slot Statistics

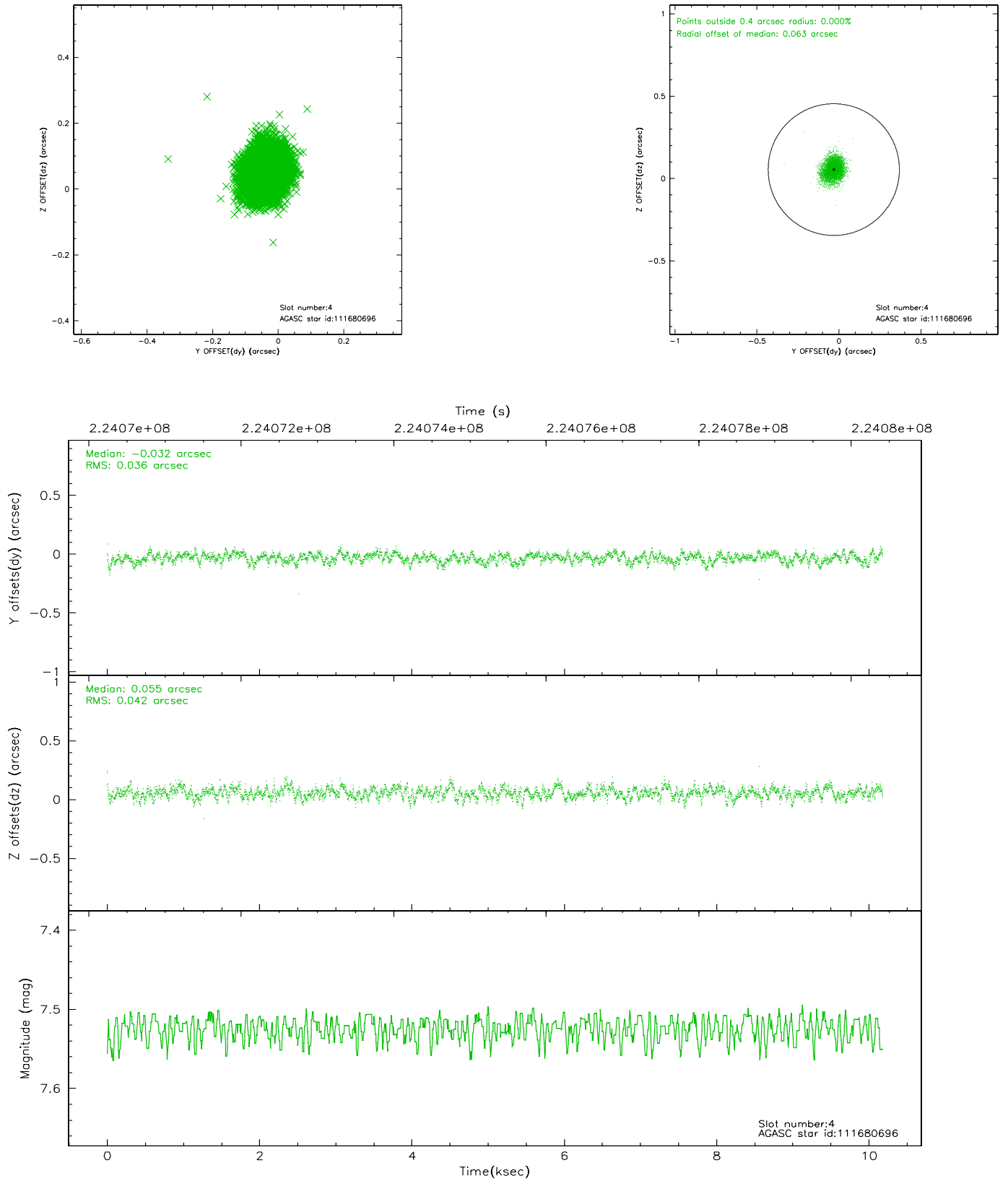
slot	status	id	mag	n_pts	med_dy	med_dz	dr1	dr2	ra	dec	mean_y	mean_z
0	FID	ACIS-S-2	7.10	2483	-0.033	-0.020	0.007	0.011	0.000000	0.000000	-760.24	-1730.82
1	FID	ACIS-S-4	7.21	2483	0.072	0.021	0.005	0.009	0.000000	0.000000	2152.87	177.22
2	FID	ACIS-S-5	7.24	2484	-0.070	0.007	0.006	0.010	0.000000	0.000000	-1812.49	171.40
3	GUIDE	111678848	7.69	4966	-0.034	0.090	0.062	0.100	162.937676	13.566004	710.75	-611.68
4	GUIDE	111680696	7.52	4969	-0.032	0.055	0.059	0.094	163.342710	13.118652	-669.94	-2254.77
5	GUIDE	111682048	8.85	4968	0.067	-0.122	0.076	0.125	162.332050	12.842718	-2177.38	1104.41
6	GUIDE	111684072	8.39	4968	0.071	-0.129	0.059	0.096	162.537547	12.809514	-2190.11	373.23
7	GUIDE	111678288	8.94	4965	-0.067	0.110	0.094	0.146	163.343524	12.746286	-1995.42	-2458.75

2.4 Star Slots

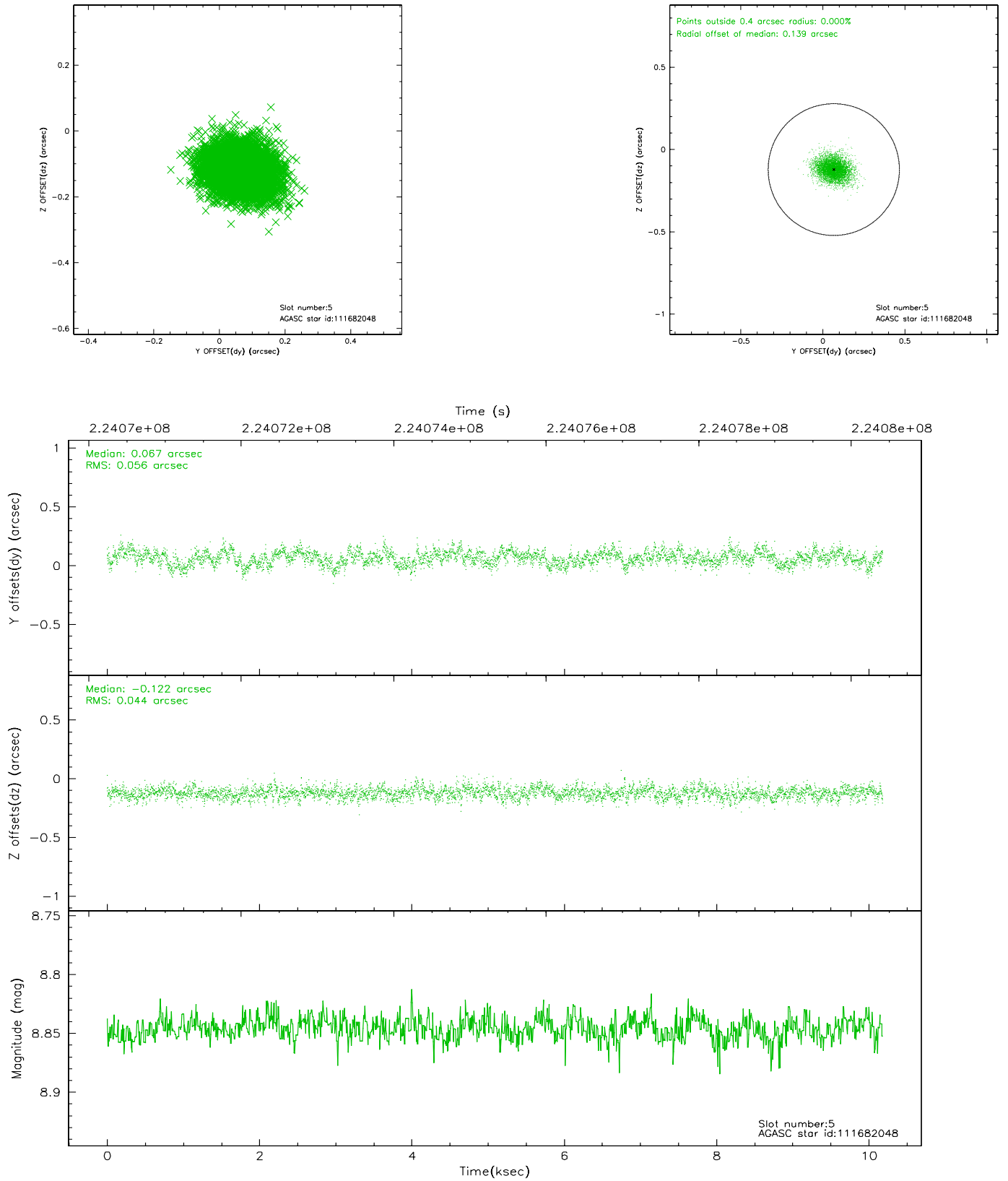
2.4.1 Slot 3



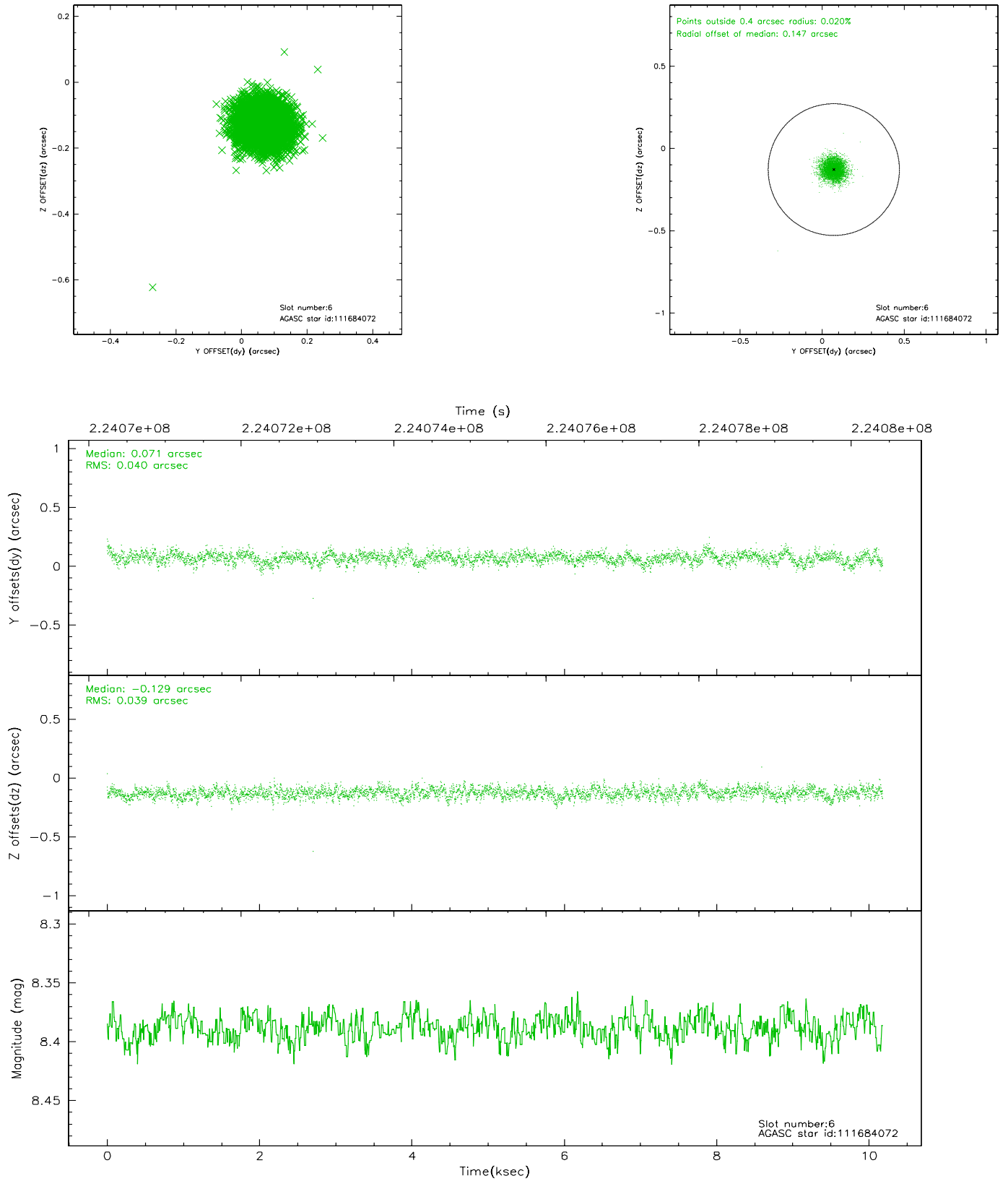
2.4.2 Slot 4



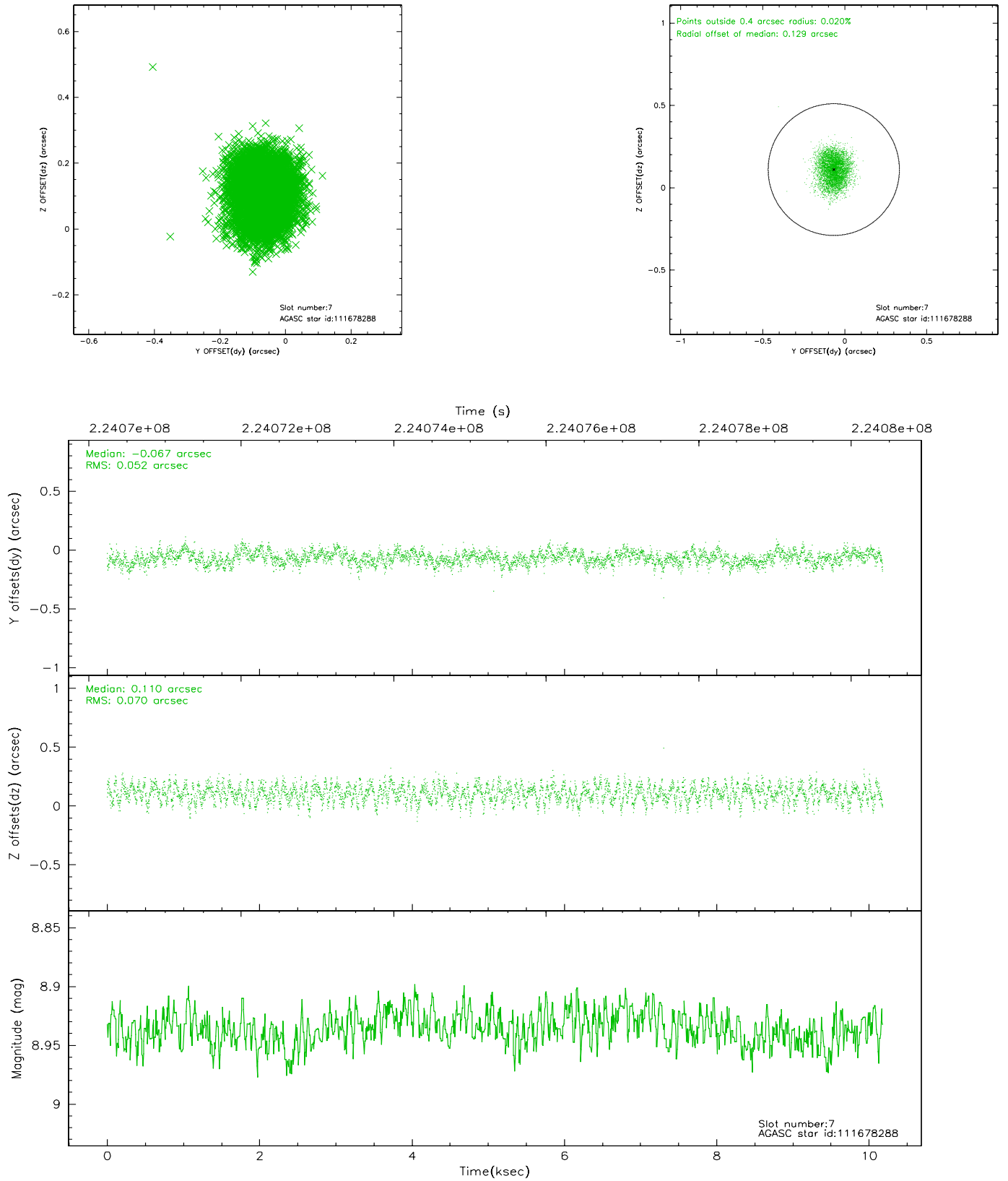
2.4.3 Slot 5



2.4.4 Slot 6

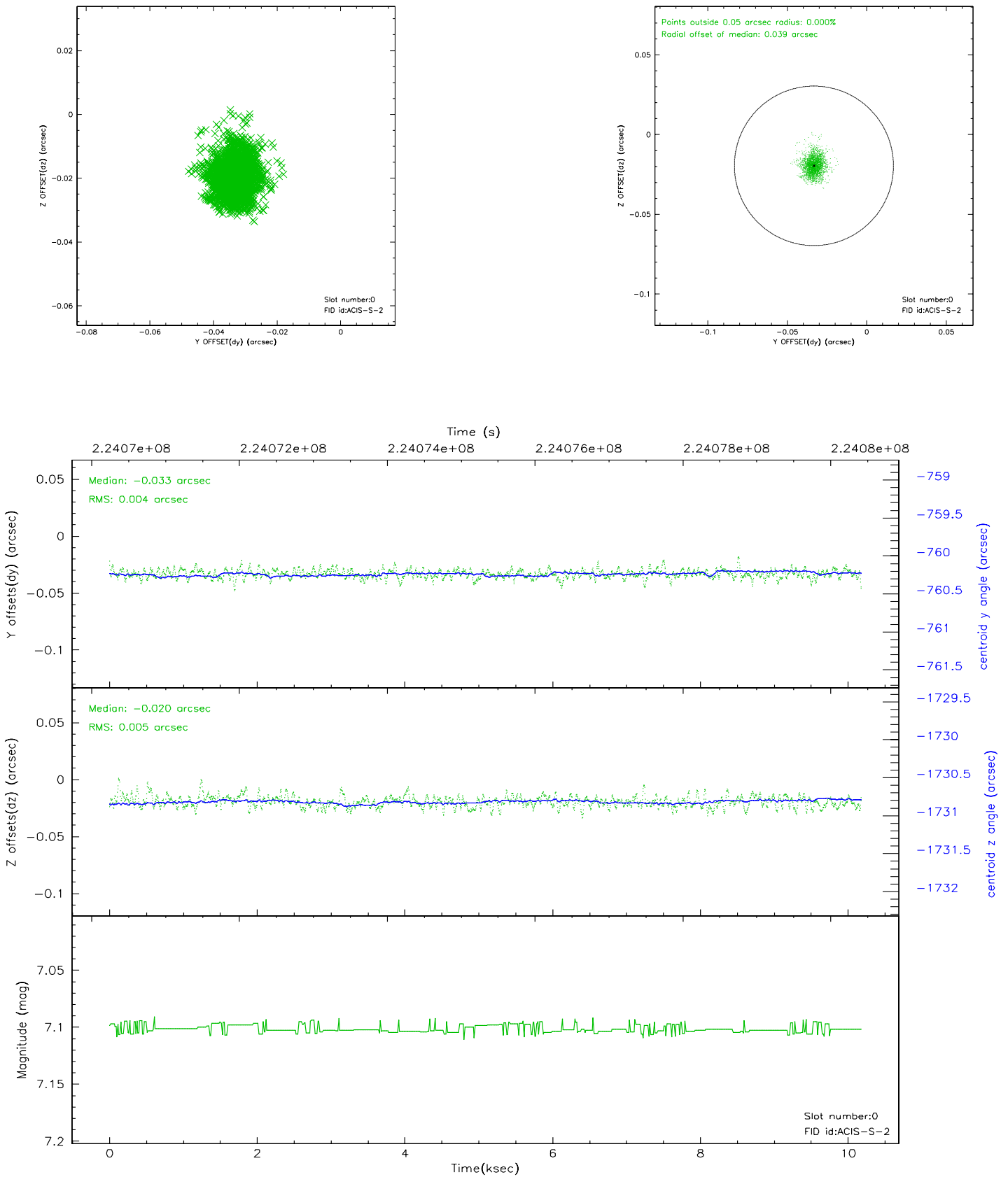


2.4.5 Slot 7

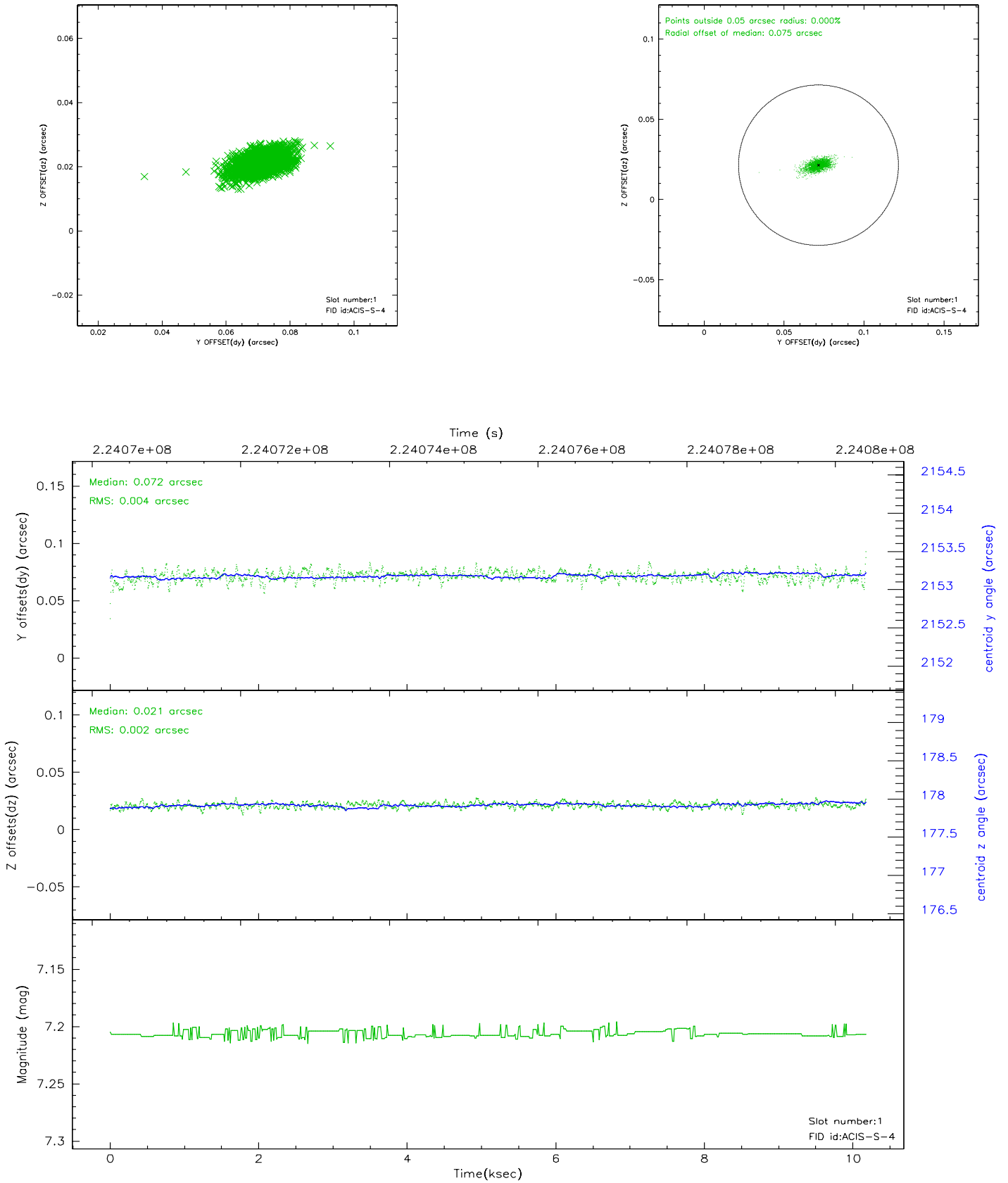


2.5 FID Slots

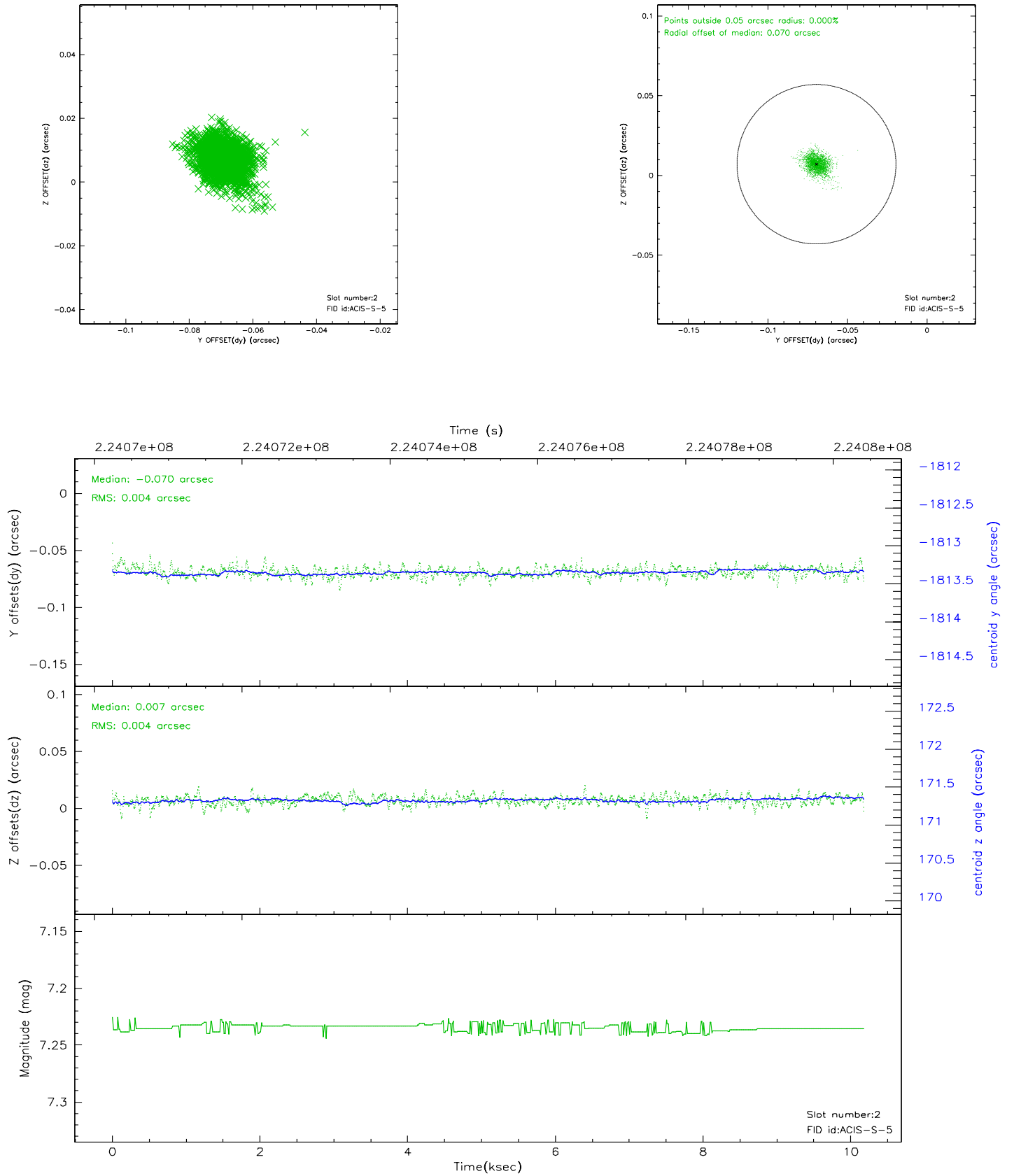
2.5.1 Slot 0



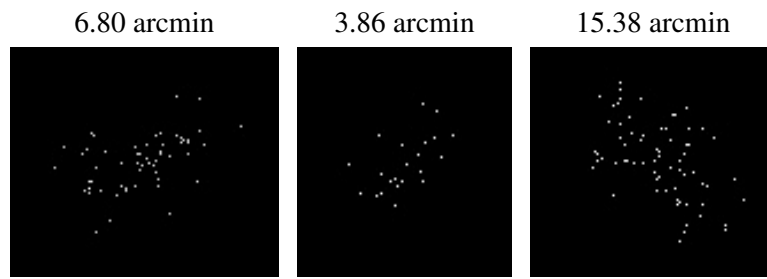
2.5.2 Slot 1



2.5.3 Slot 2



3 Point Sources



A Summary

A.1 Status

V&V Scientist	Beth Sundheim
V&V Date (YYYY-MM-DD)	2006.02.22
V&V Edition	1
V&V Disposition and Status	OK
V&V Charge Time	10.09049

A.2 Comments