

V&V Reference Report

L2 ASCDS Version : 7.6.7.1

Observation 4692 - L2 Version 001
Chandra X-Ray Center

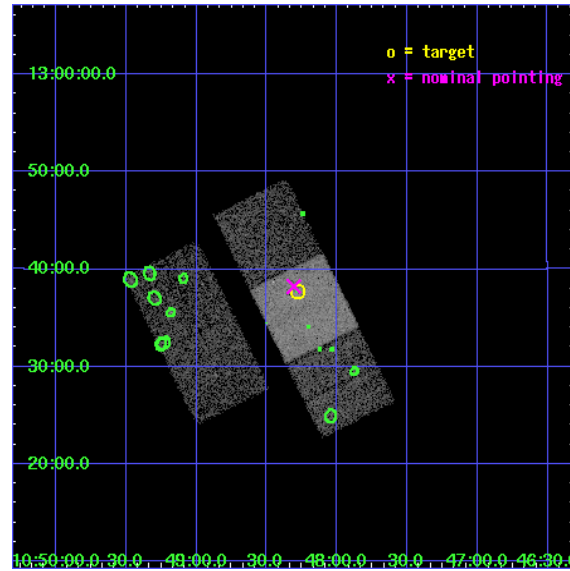
L2 Processing Date : Apr 15 2006

Contents

1	Front	2
2	OBI	3
2.1	OBI	3
2.1.1	Images	3
2.1.2	Bias	3
2.1.3	Parameters	4
2.1.4	Events	4
2.2	Compared Parameters	5
2.3	Aspect	6
2.4	Star Slots	9
2.4.1	Slot 3	9
2.4.2	Slot 4	10
2.4.3	Slot 5	11
2.4.4	Slot 6	12
2.4.5	Slot 7	13
2.5	FID Slots	14
2.5.1	Slot 0	14
2.5.2	Slot 1	15
2.5.3	Slot 2	16
3	Point Sources	17
A	Summary	18
A.1	Status	18
A.2	Comments	18

1 Front

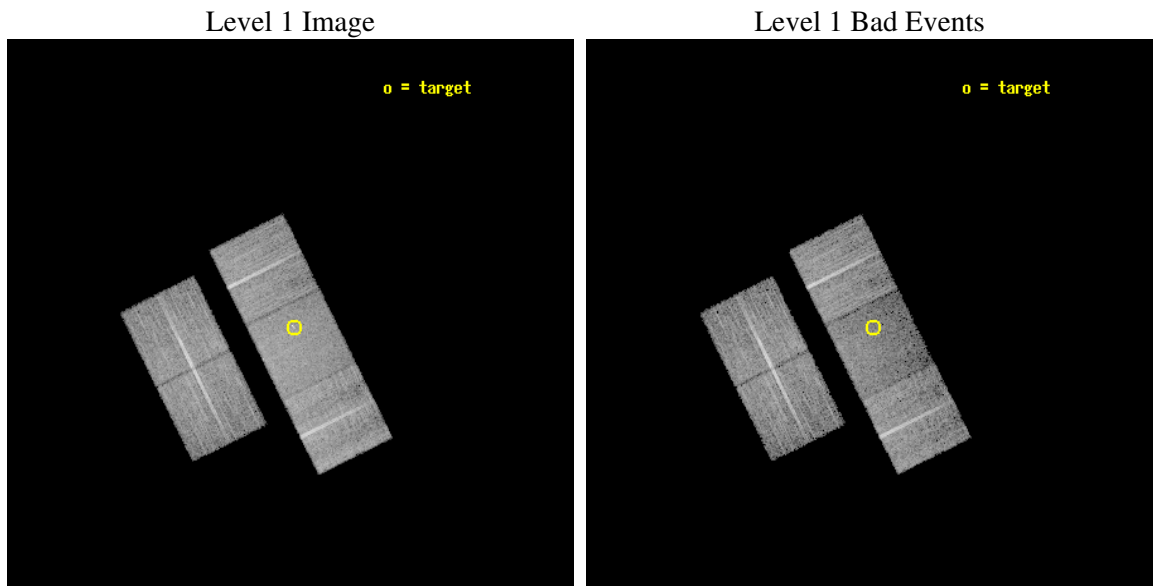
seq_num	600347
obs_id	4692
title	Physics of Accretion Flows in Ultra-low Luminosity AGNs: A Mini Survey of a Distance-Limited Sample of Inactive Galaxies
observer	Dr. Yuichi Terashima
object	NGC 3384
dtcycle	0
cycle	P
ra_targ	162.070833
dec_targ	12.629722
ra_nom	162.07675655314
dec_nom	12.637488070301
roll_nom	63.641007844321
revision	2
ontime	10034.699980706
livetime	9903.5892380194
ontime2	10034.699980706
ontime3	10034.699980706
ontime6	10034.699980706
ontime7	10034.699980706
ontime8	10034.699980706
l2events	54517



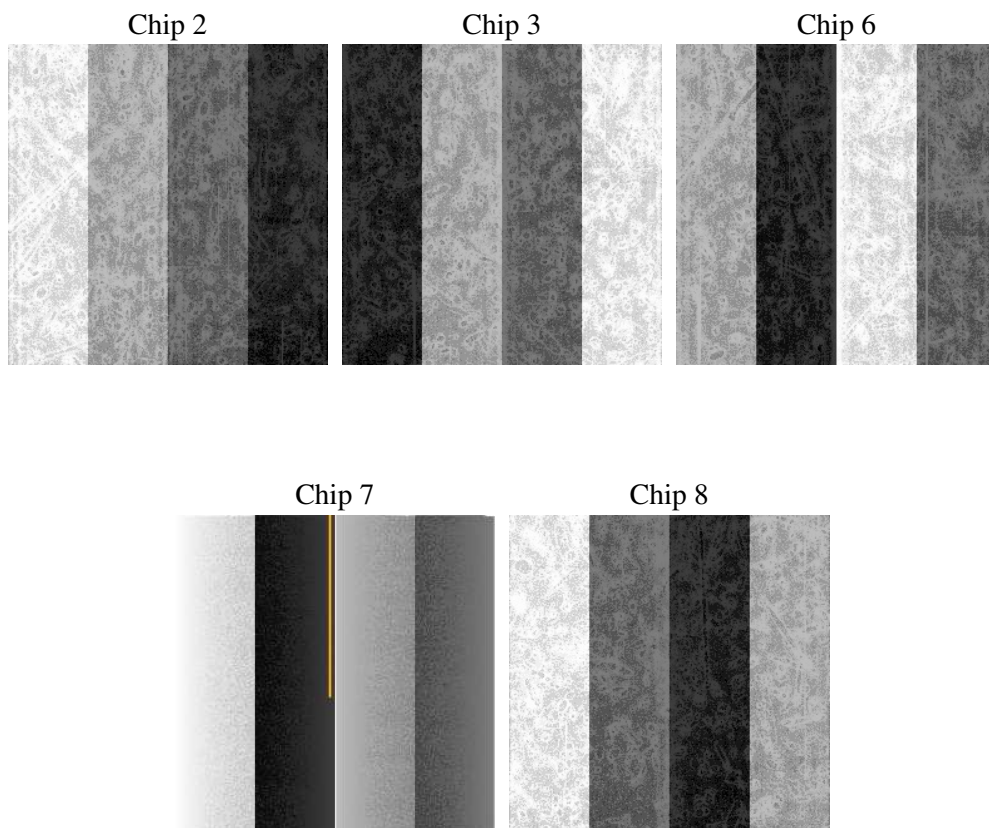
2 OBI

2.1 OBI

2.1.1 Images



2.1.2 Bias



2.1.3 Parameters

obi_num	1
ascdsver	7.6.7.1
caldbver	3.2.1
date	2006-04-15T09:20:51
revision	2

sched_exp_time	10000.000000
ontime	10038.640199333
ontime2	10038.640169442
ontime3	10038.640169442
ontime6	10038.640169442
ontime7	10038.640199333
ontime8	10038.640169442
llevents	365287

2.1.4 Events

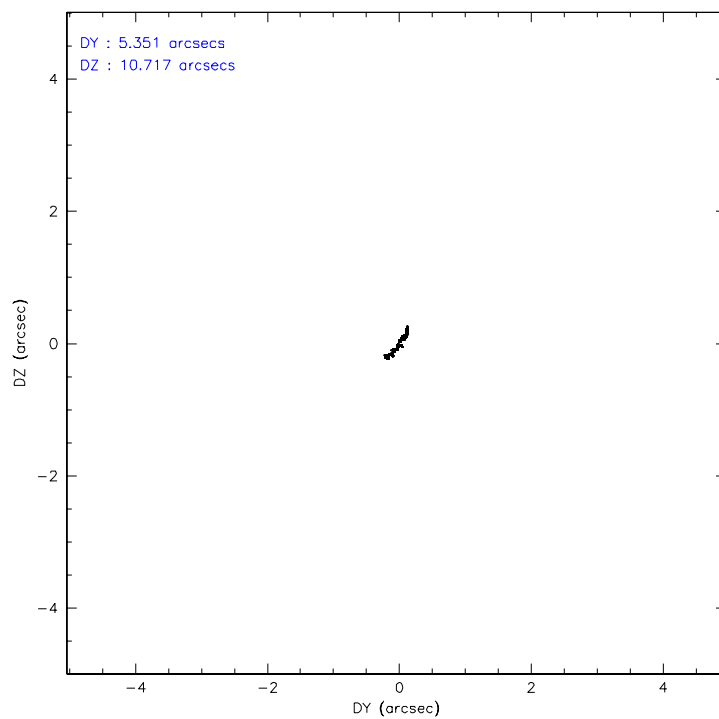
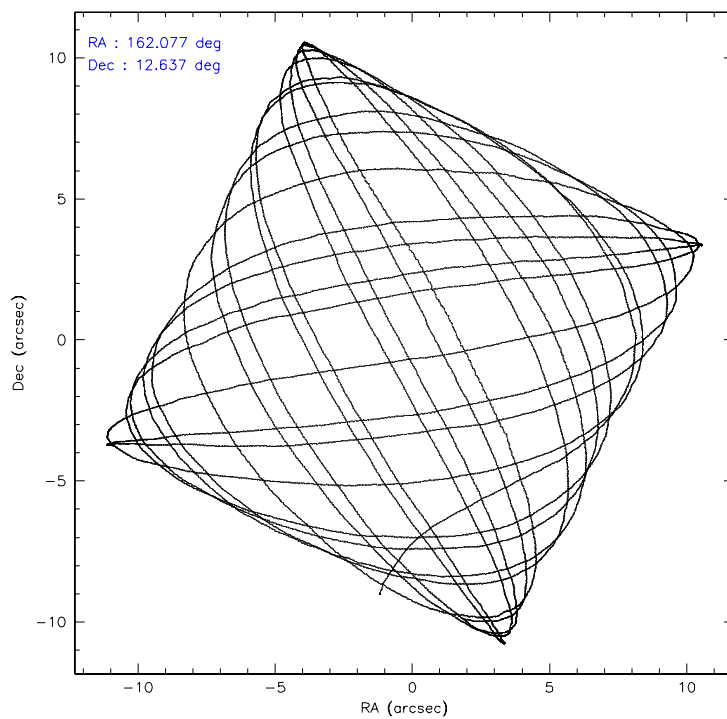
	ccd 2	ccd 3	ccd 6	ccd 7	ccd 8
level 1 events	69457	64993	73339	73923	83575
rejected events	62991	58996	66462	42245	64538
rejected %	90%	90%	90%	57%	77%

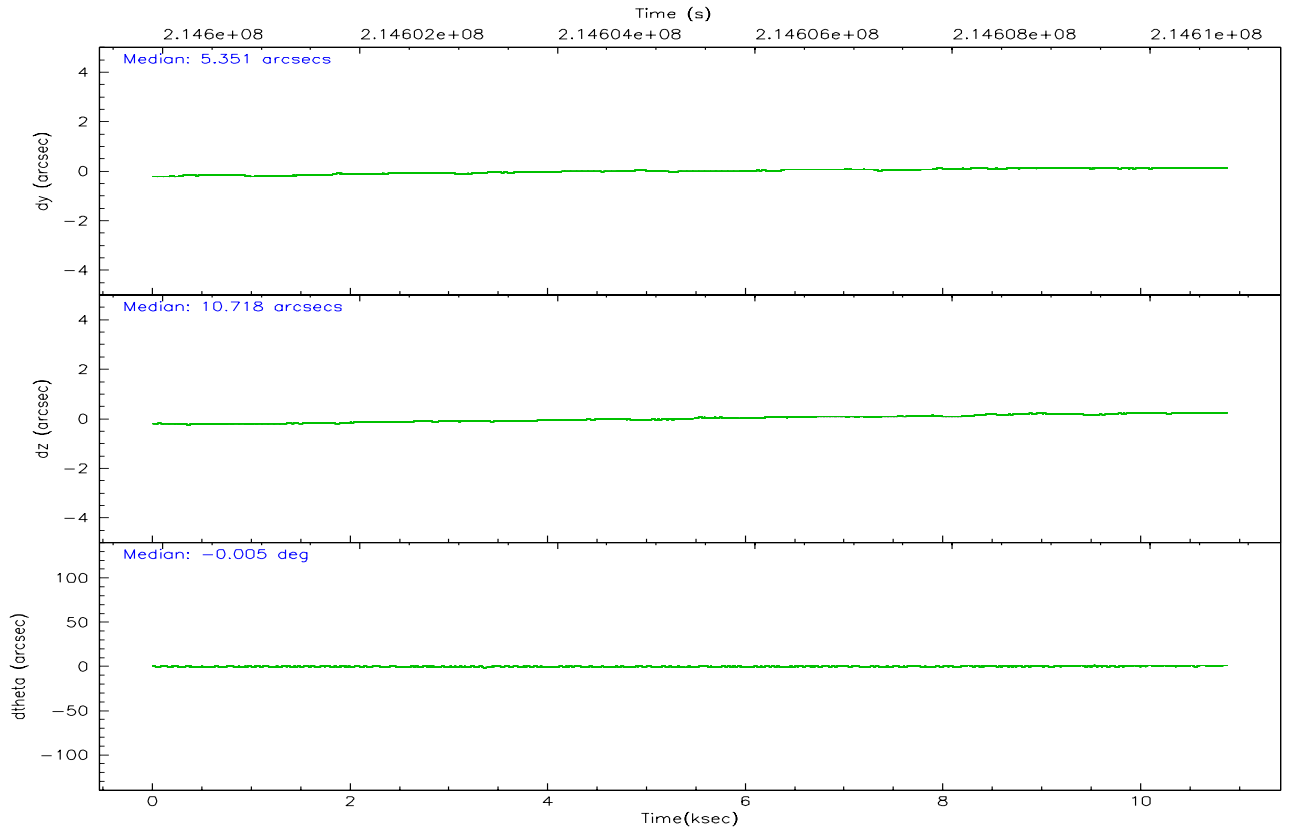
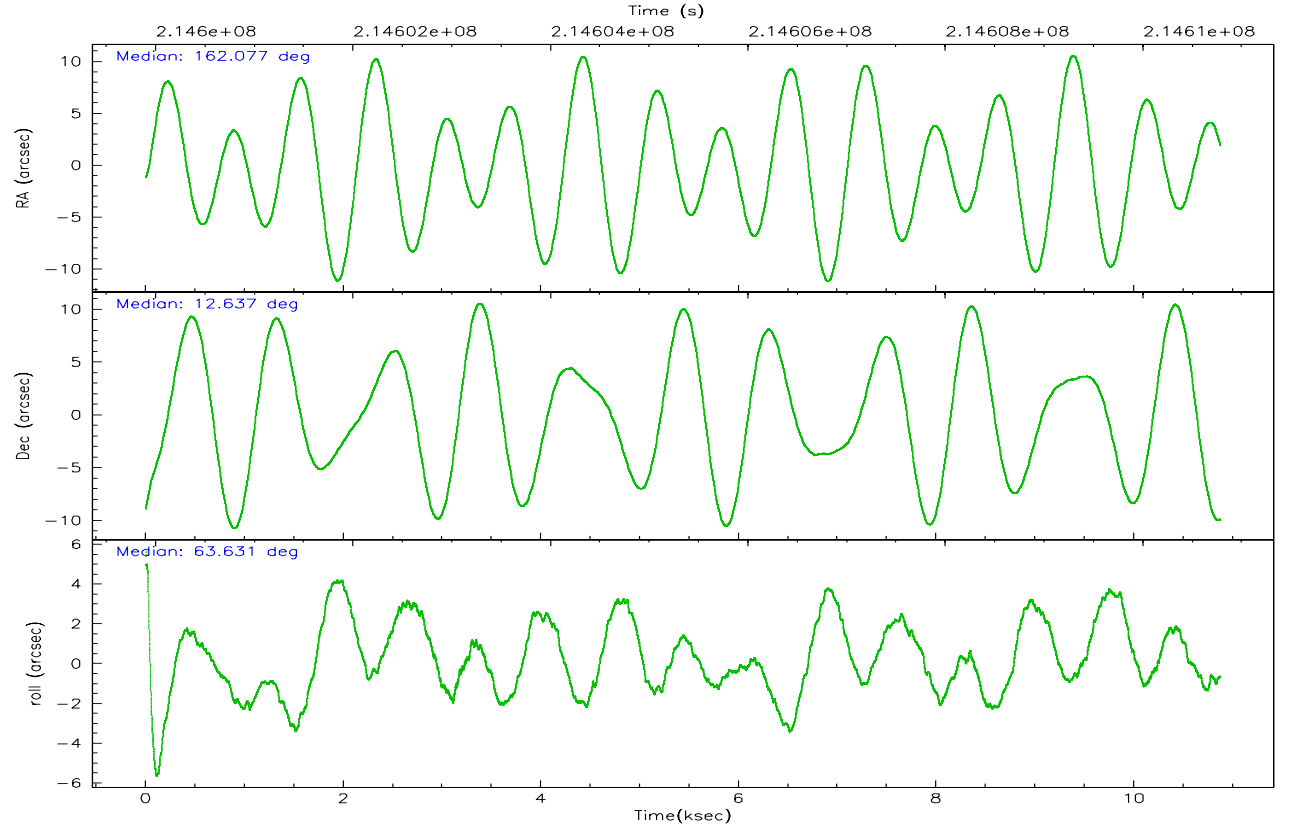
	ccd 2	ccd 3	ccd 6	ccd 7	ccd 8
grade 0 events	2322	2082	2314	2057	5762
	3%	3%	3%	2%	6%
grade 1 events	30	43	35	46	61
	0%	0%	0%	0%	0%
grade 2 events	1460	1320	1459	7799	4320
	2%	2%	1%	10%	5%
grade 3 events	738	691	853	1942	2092
	1%	1%	1%	2%	2%
grade 4 events	758	712	782	1778	1811
	1%	1%	1%	2%	2%
grade 5 events	2112	2520	2704	5442	3722
	3%	3%	3%	7%	4%
grade 6 events	1192	1193	1470	18121	5070
	1%	1%	2%	24%	6%
grade 7 events	60845	56432	63722	36738	60737
	87%	86%	86%	49%	72%

2.2 Compared Parameters

Parameter	Planned	Actual	Parameter	Planned	Actual
Instrument	ACIS	ACIS	Obspar format version number	6	6
Detector	ACIS-23678	ACIS-23678	Obspar file type	PREDICTED	ACTUAL
Grating	NONE	NONE	Obspar update status	NONE	UPDATED
Data mode	VFAINT	VFAINT	On-chip summing requested	N	N
Observation mode	POINTING	POINTING	Subarray requested	NONE	NONE
Pointing RA	162.078878	162.0767565531401	Alternating exposures requested	N	N
Pointing Dec	12.610352	12.63748807030147	Primary exposure time	0.000000	3.1
Pointing Roll	63.483907	63.64100784432127			
SIM focus pos (mm)	-0.684267	-0.6828225247311905			
SIM defocus (mm)	0	0.001444936568705701			
SIM translation stage pos (mm)	-190.132523	-190.1425803651734			
SIM translation stage offset (mm)	0	0.01005778216563158			
Observation start time	214600781.184000	214599452.55285			
Observation start date	2004-10-19T19:18:37	2004-10-19T18:57:32			
Observation end time	214610781.184000	214611776.1284			
Observation end date	2004-10-19T22:05:17	2004-10-19T22:22:56			
Read mode	TIMED	TIMED			

2.3 Aspect



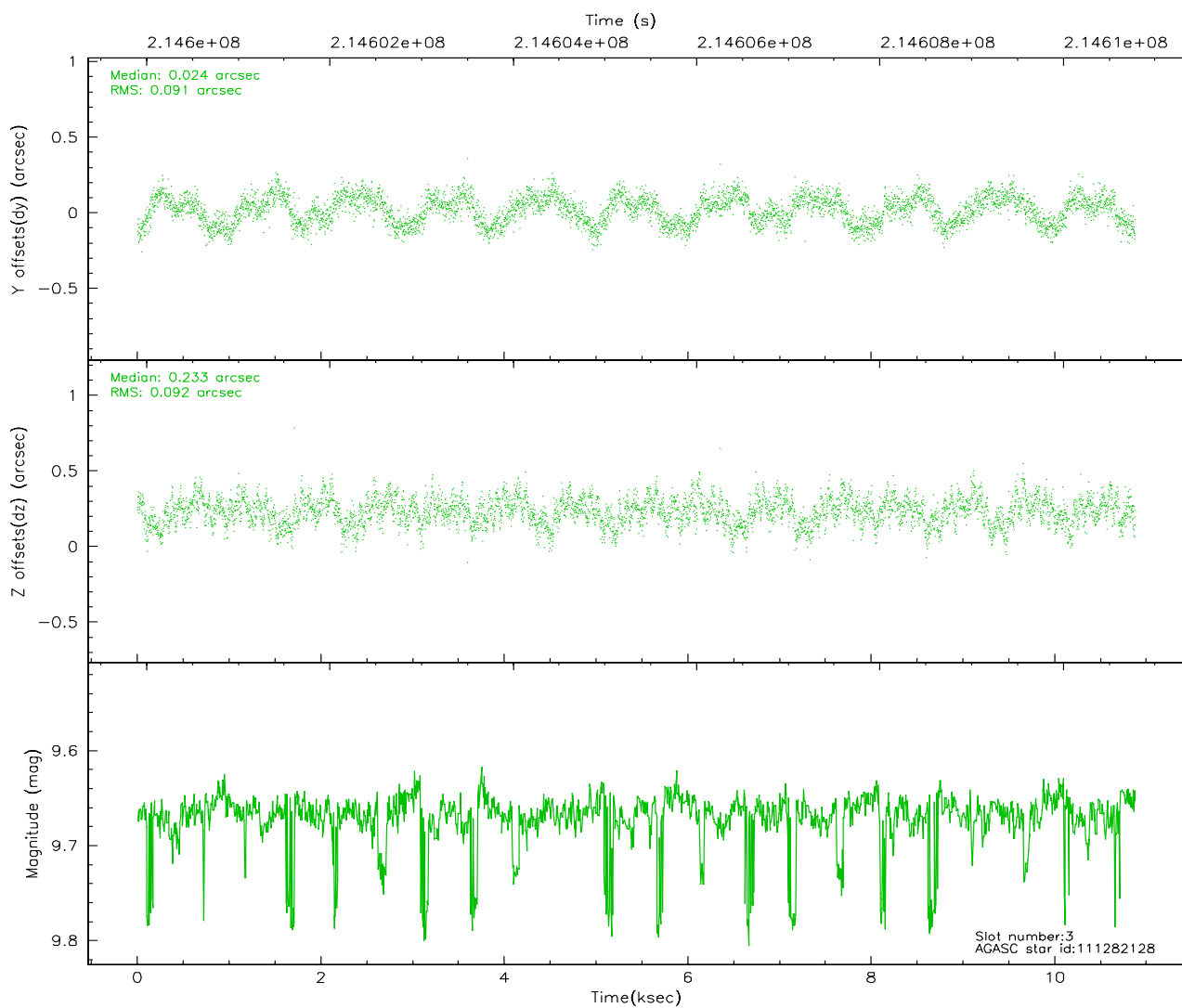
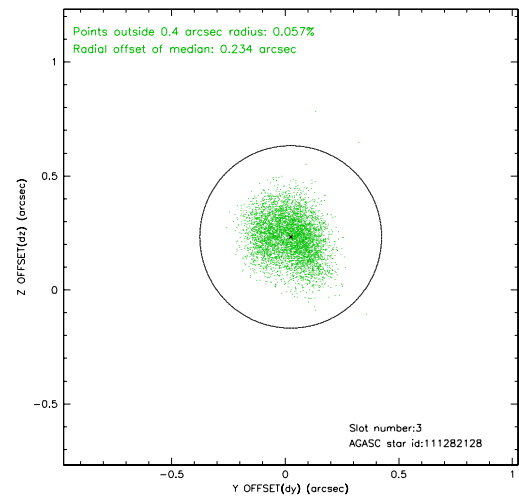
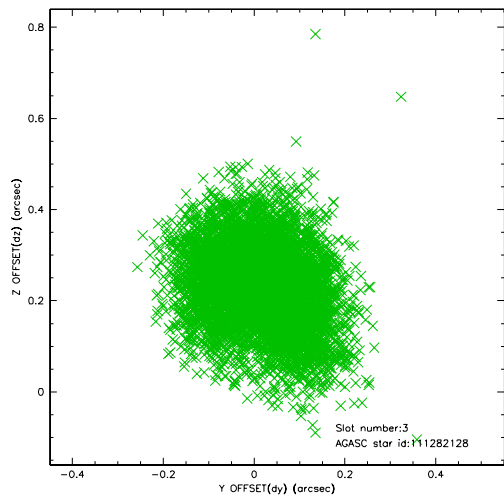


Slot Statistics

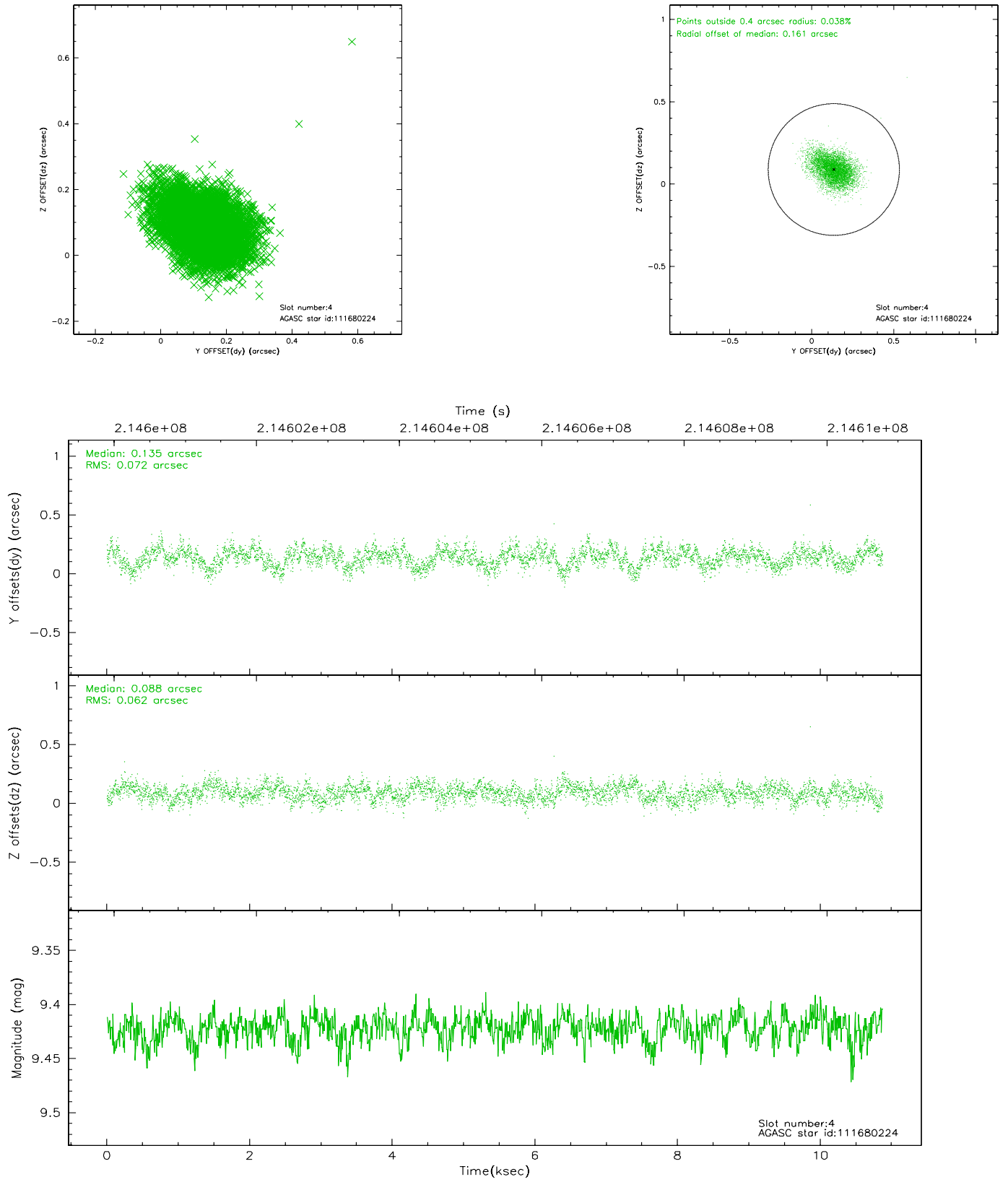
slot	status	id	mag	n_pts	med_dy	med_dz	dr1	dr2	ra	dec	mean_y	mean_z
0	FID	ACIS-S-2	7.10	2652	-0.064	-0.010	0.006	0.011	0.000000	0.000000	-758.08	-1731.96
1	FID	ACIS-S-4	7.21	2652	0.085	0.034	0.006	0.014	0.000000	0.000000	2155.09	176.12
2	FID	ACIS-S-5	7.23	2652	-0.051	-0.015	0.007	0.013	0.000000	0.000000	-1810.33	170.22
3	GUIDE	111282128	9.67	5260	0.024	0.233	0.139	0.216	162.570224	12.424897	175.71	-1842.68
4	GUIDE	111680224	9.42	5297	0.135	0.088	0.100	0.164	161.634669	12.601106	-725.28	1381.95
5	GUIDE	111682696	8.38	5302	-0.094	-0.165	0.064	0.102	161.852703	13.379057	2122.54	1945.17
6	GUIDE	111683728	7.31	5305	-0.044	-0.289	0.065	0.102	161.580479	12.747846	-336.69	1787.81
7	GUIDE	111684072	8.42	5298	-0.014	0.137	0.062	0.100	162.537547	12.809514	1361.92	-1119.21

2.4 Star Slots

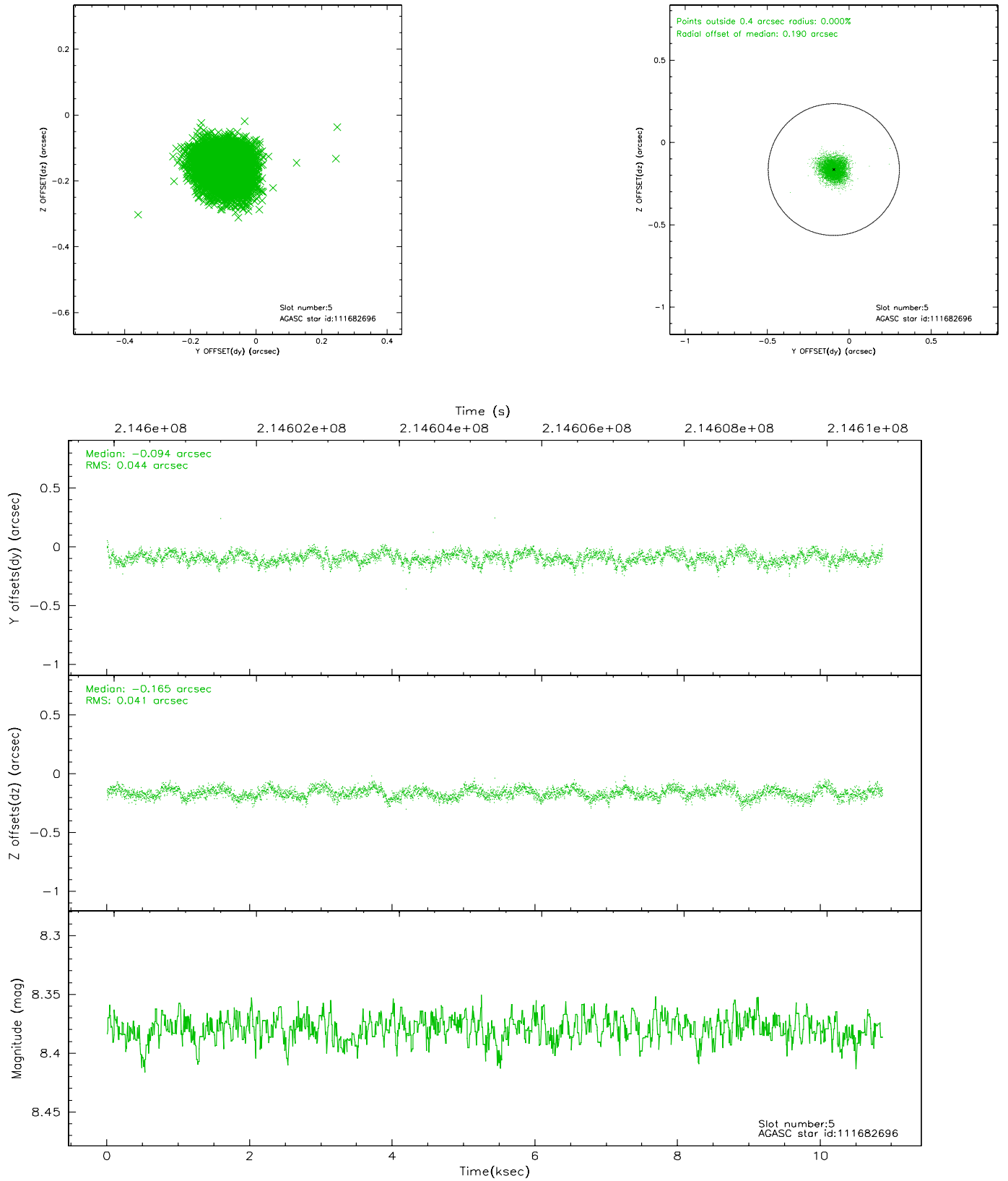
2.4.1 Slot 3



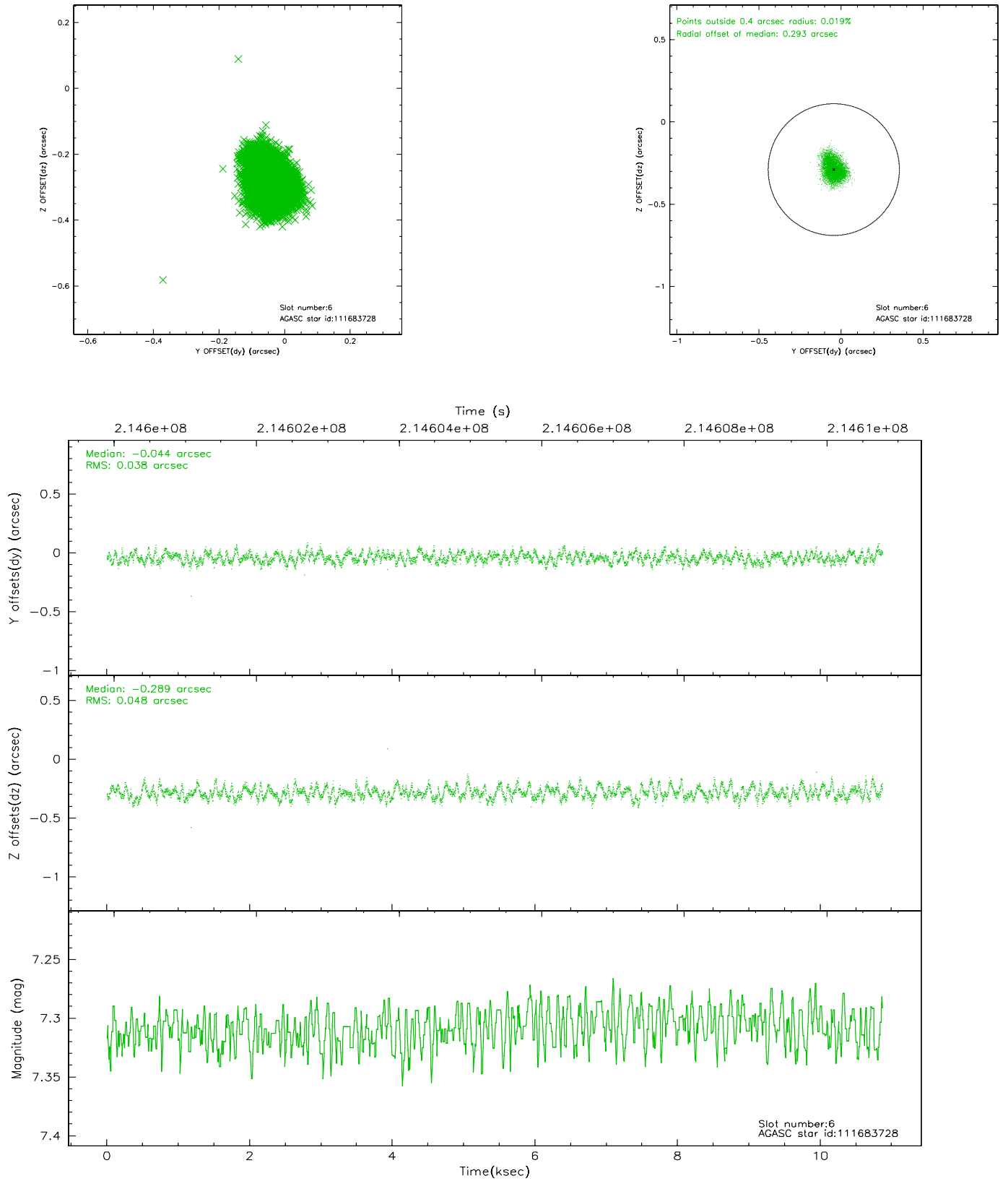
2.4.2 Slot 4



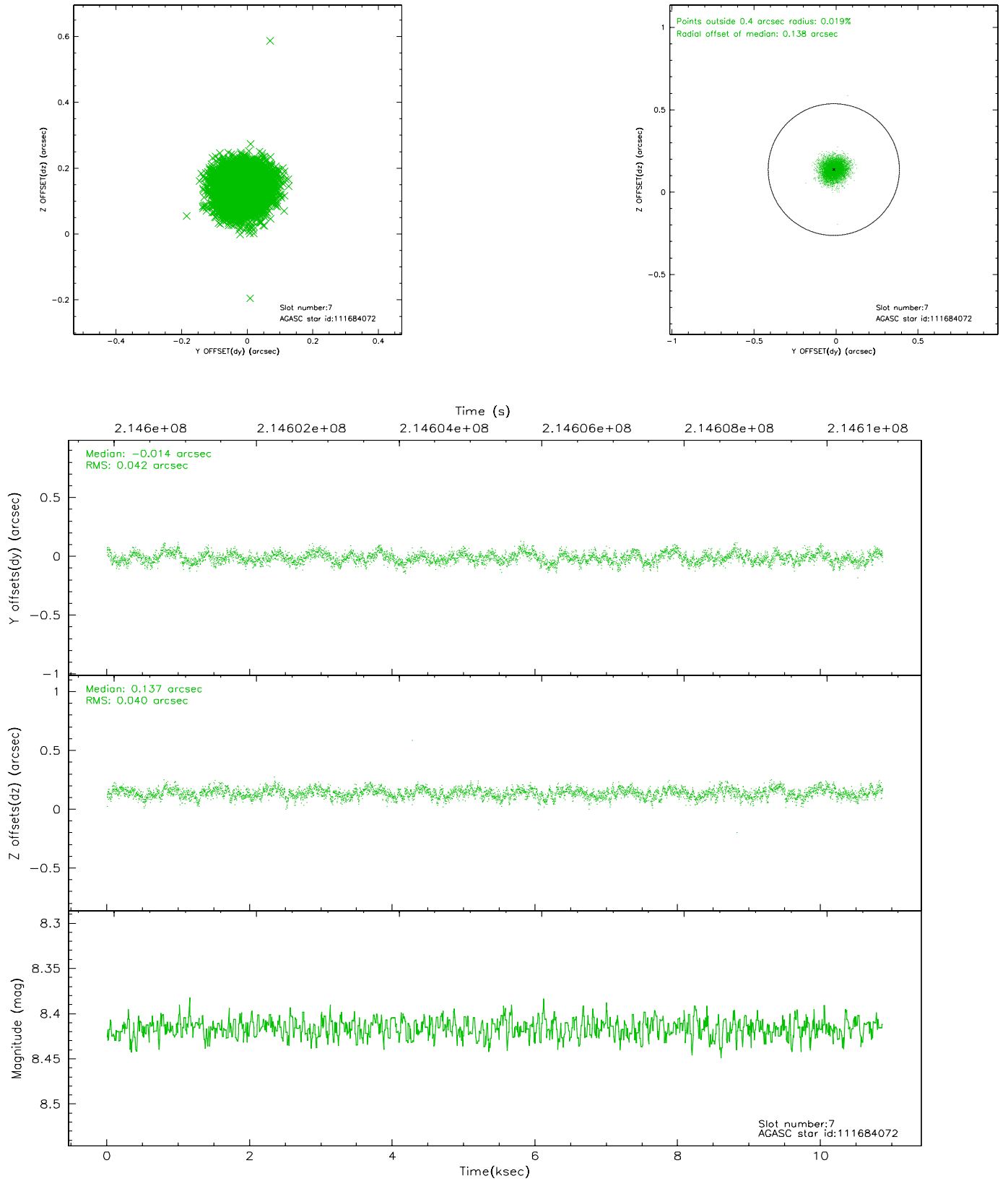
2.4.3 Slot 5



2.4.4 Slot 6

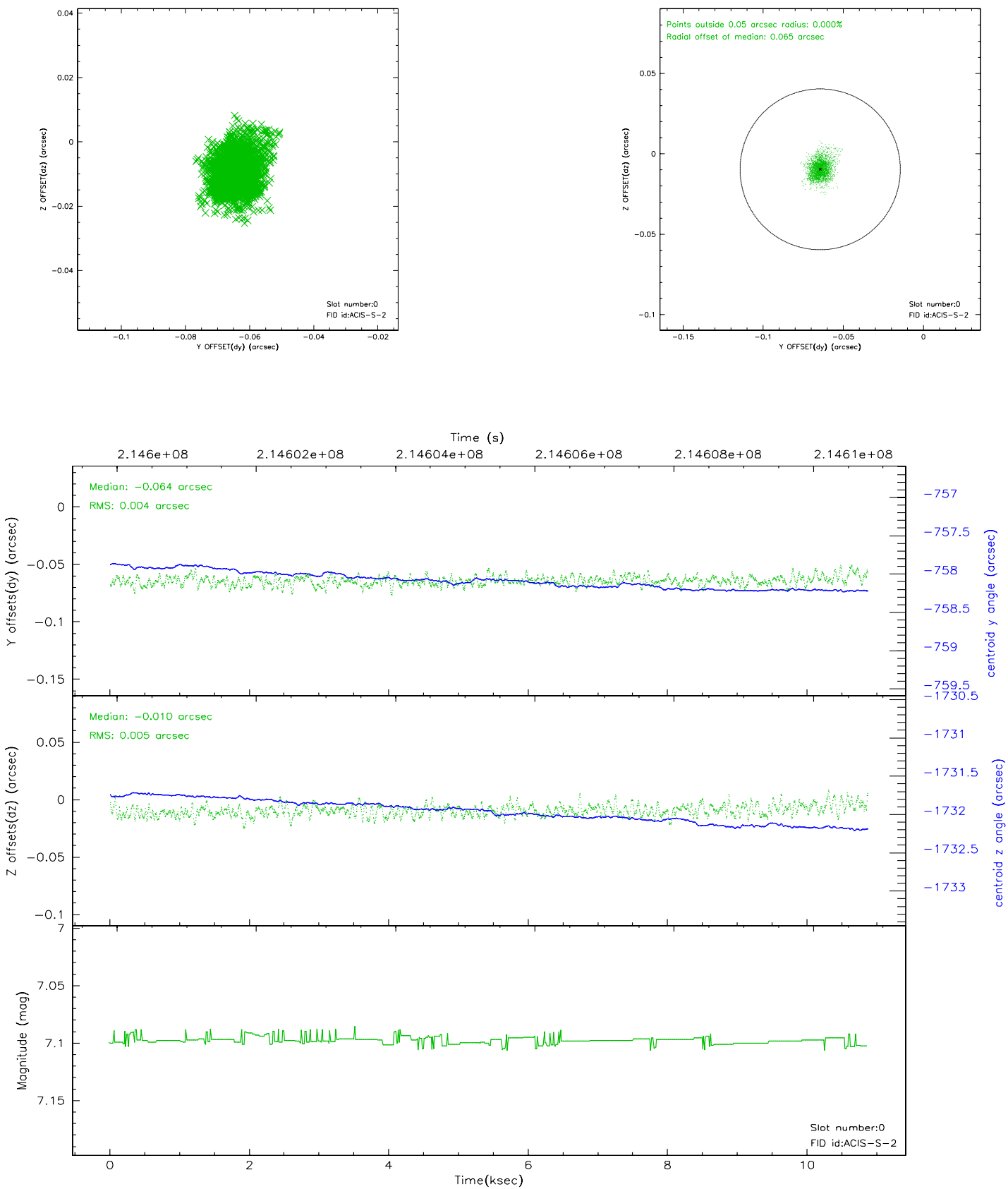


2.4.5 Slot 7

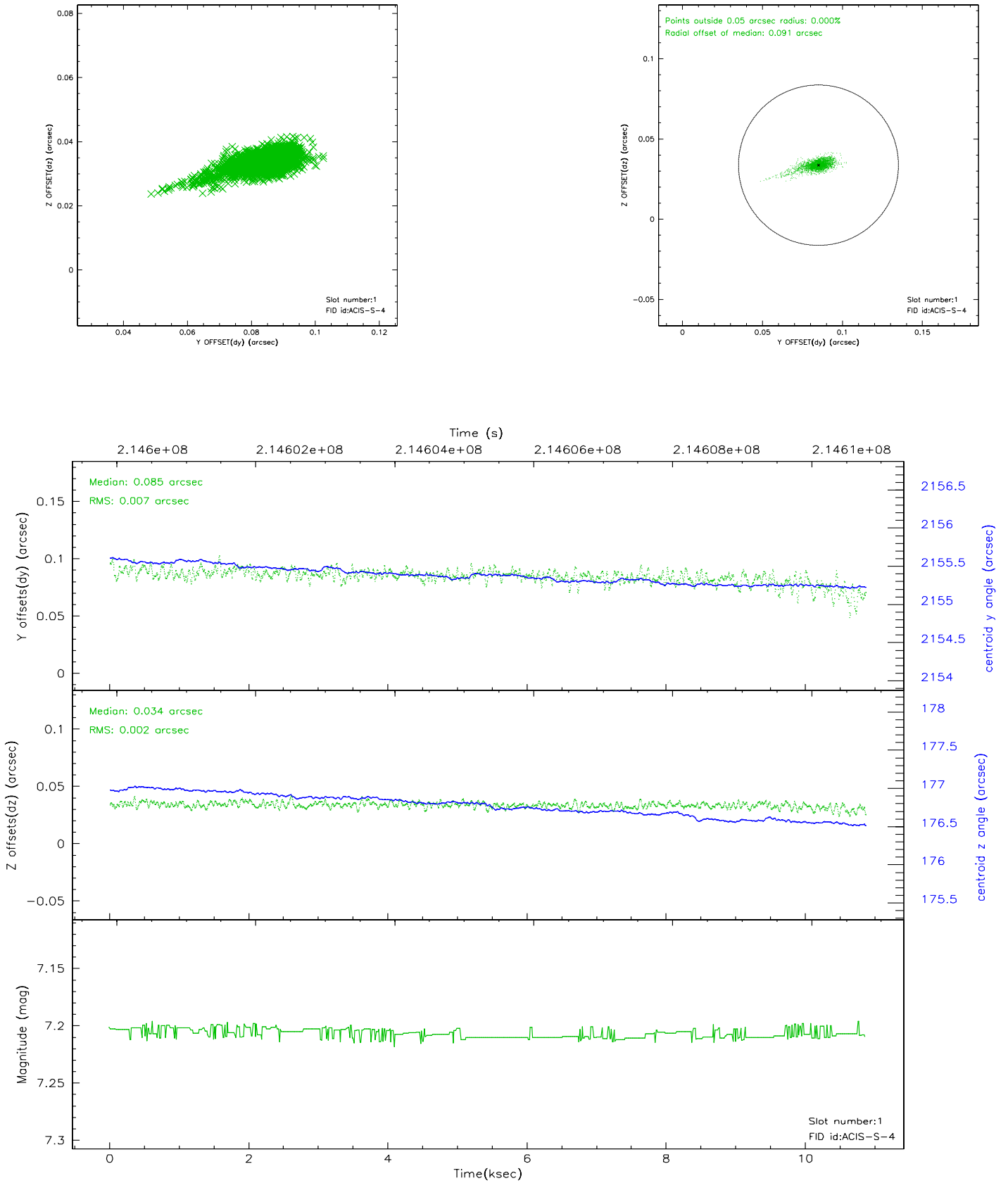


2.5 FID Slots

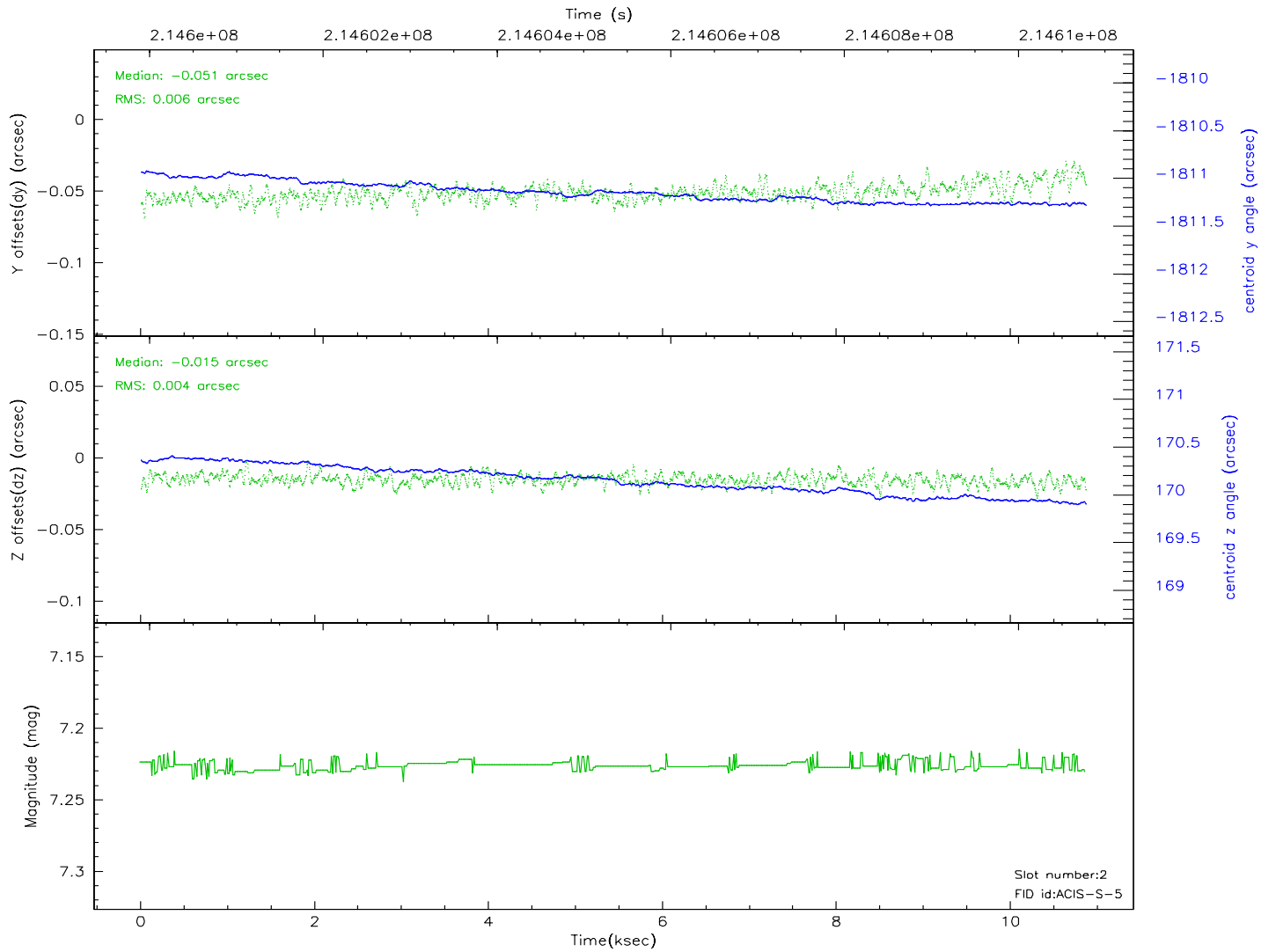
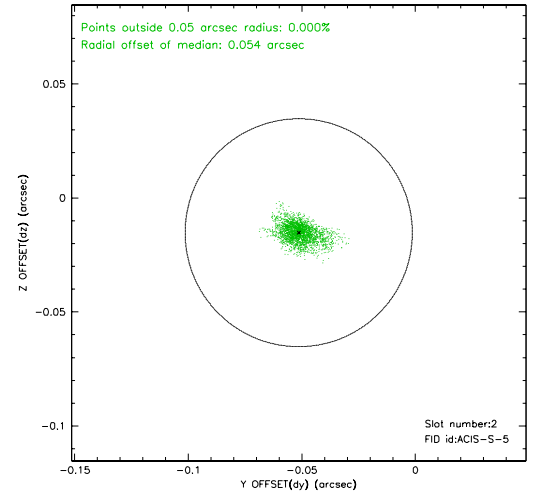
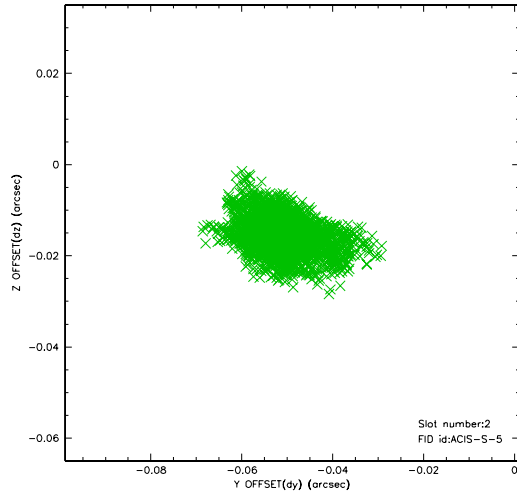
2.5.1 Slot 0



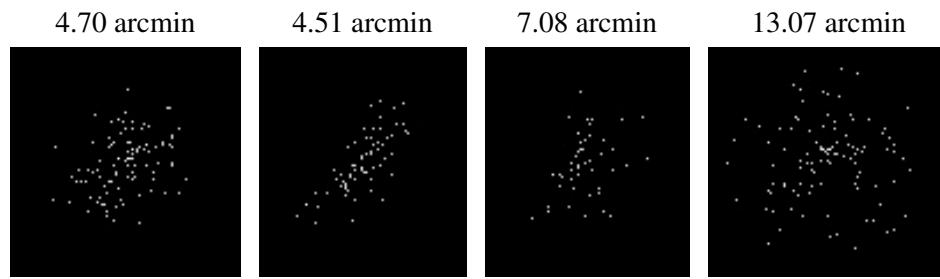
2.5.2 Slot 1



2.5.3 Slot 2



3 Point Sources



A Summary

A.1 Status

V&V Scientist	Beth Sundheim
V&V Date (YYYY-MM-DD)	2006.04.16
V&V Edition	1
V&V Disposition and Status	OK
V&V Charge Time	10.034

A.2 Comments