

# V&V Reference Report

## L2 ASCDS Version : 8.5

Observation 6129 - L2 Version 3  
Chandra X-Ray Center

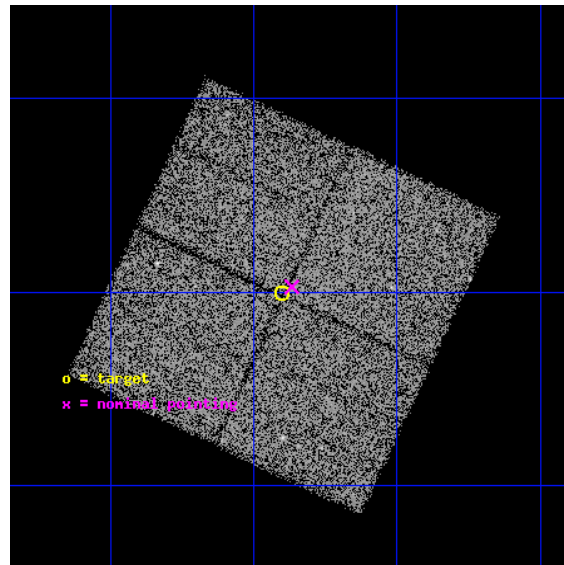
L2 Processing Date : Dec 8 2012

## Contents

<b>1</b>	<b>Front</b>	<b>2</b>
<b>2</b>	<b>OBI</b>	<b>3</b>
2.1	OBI . . . . .	3
2.1.1	Images . . . . .	3
2.1.2	Bias . . . . .	3
2.1.3	Parameters . . . . .	4
2.1.4	Events . . . . .	4
2.2	Compared Parameters . . . . .	5
2.3	Aspect . . . . .	6
2.4	Star Slots . . . . .	9
2.4.1	Slot 3 . . . . .	9
2.4.2	Slot 4 . . . . .	10
2.4.3	Slot 5 . . . . .	11
2.4.4	Slot 6 . . . . .	12
2.4.5	Slot 7 . . . . .	13
2.5	FID Slots . . . . .	14
2.5.1	Slot 0 . . . . .	14
2.5.2	Slot 1 . . . . .	15
2.5.3	Slot 2 . . . . .	16
<b>A</b>	<b>Summary</b>	<b>17</b>
A.1	Status . . . . .	17
A.2	Comments . . . . .	17

# 1 Front

seq_num	500591	Sequence number
obs_id	6129	Observation id
title	GRB040912: An Unusual Event Exhibiting Strong Spectral Evolution from a GRB to an XRF	Proposal title
observer	Dr. george Ricker	Principal investigator
object	GRB040912	Source name
dtcycle	0	&#160
cycle	P	events from which exps? Prim/Second/Both
ra_targ	359.225	Observer's specified target RA [deg]
dec_targ	-1.000556	Observer's specified target Dec [deg]
ra_nom	359.21665014553	Nominal RA [deg]
dec_nom	-0.99541692560235	Nominal Dec [deg]
roll_nom	25.208555001865	Nominal Roll [deg]
revision	3	Processing version of data
ontime	19508.258982211	Sum of GTIs [s]
livetime	19253.369216837	Livetime [s]
ontime0	19511.399962455	Sum of GTIs [s]
ontime1	19508.258992225	Sum of GTIs [s]
ontime2	19511.399962455	Sum of GTIs [s]
ontime3	19508.258982211	Sum of GTIs [s]
l2events	72600	Number of level 2 events

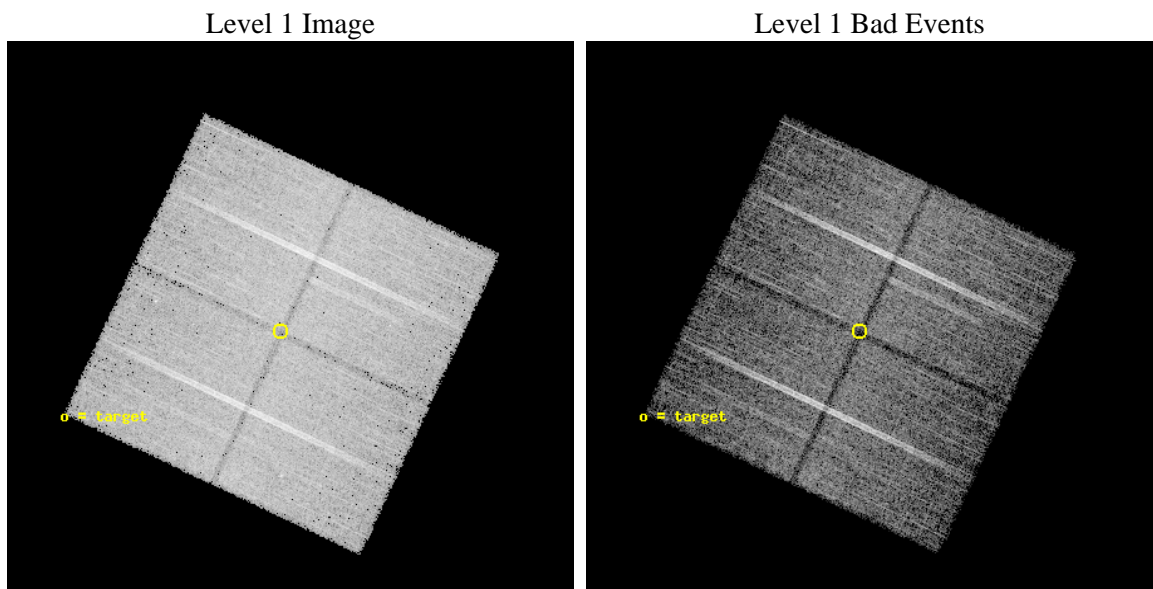




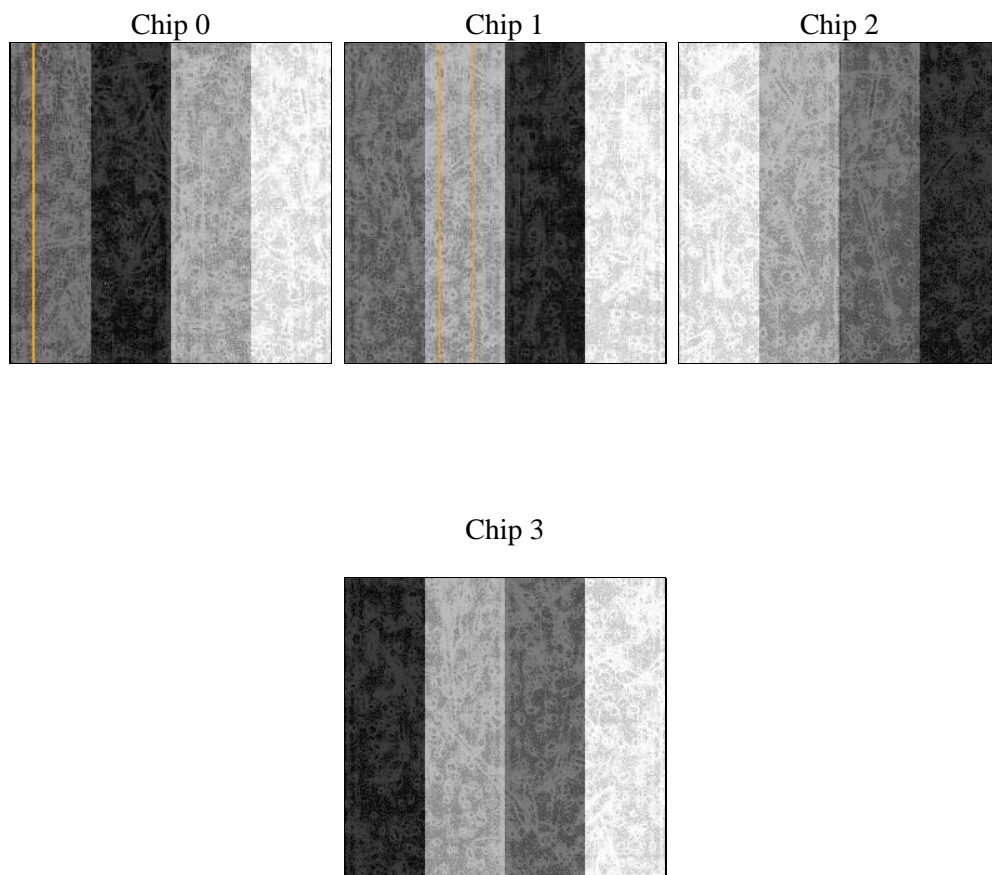
## 2 OBI

### 2.1 OBI

#### 2.1.1 Images



#### 2.1.2 Bias



### 2.1.3 Parameters

obi_num	0	Obi number	sched_exp_time	19371.000000	[s] Scheduled observation exposure time
ascdsver	8.5	Processing system revision	ontime	19508.258982211	Sum of GTIs [s]
caldsver	4.5.4	&#160	ontime0	19511.399962455	Sum of GTIs [s]
date	2012-12-09T01:39:14	Date and time of file creation	ontime1	19508.258992225	Sum of GTIs [s]
revision	3	Processing version of data	ontime2	19511.399962455	Sum of GTIs [s]
			ontime3	19508.258982211	Sum of GTIs [s]
			l1events	592250	Number of level 1 events

### 2.1.4 Events

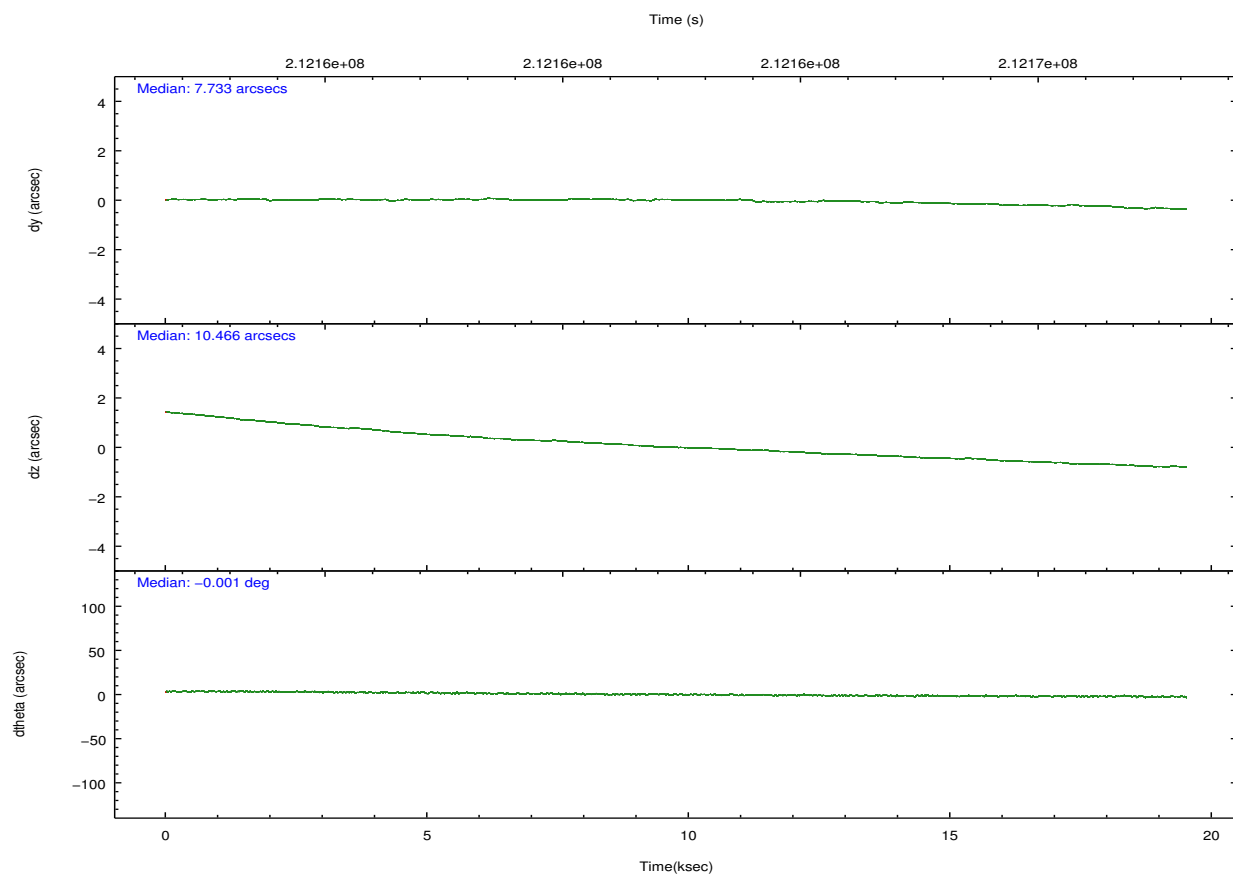
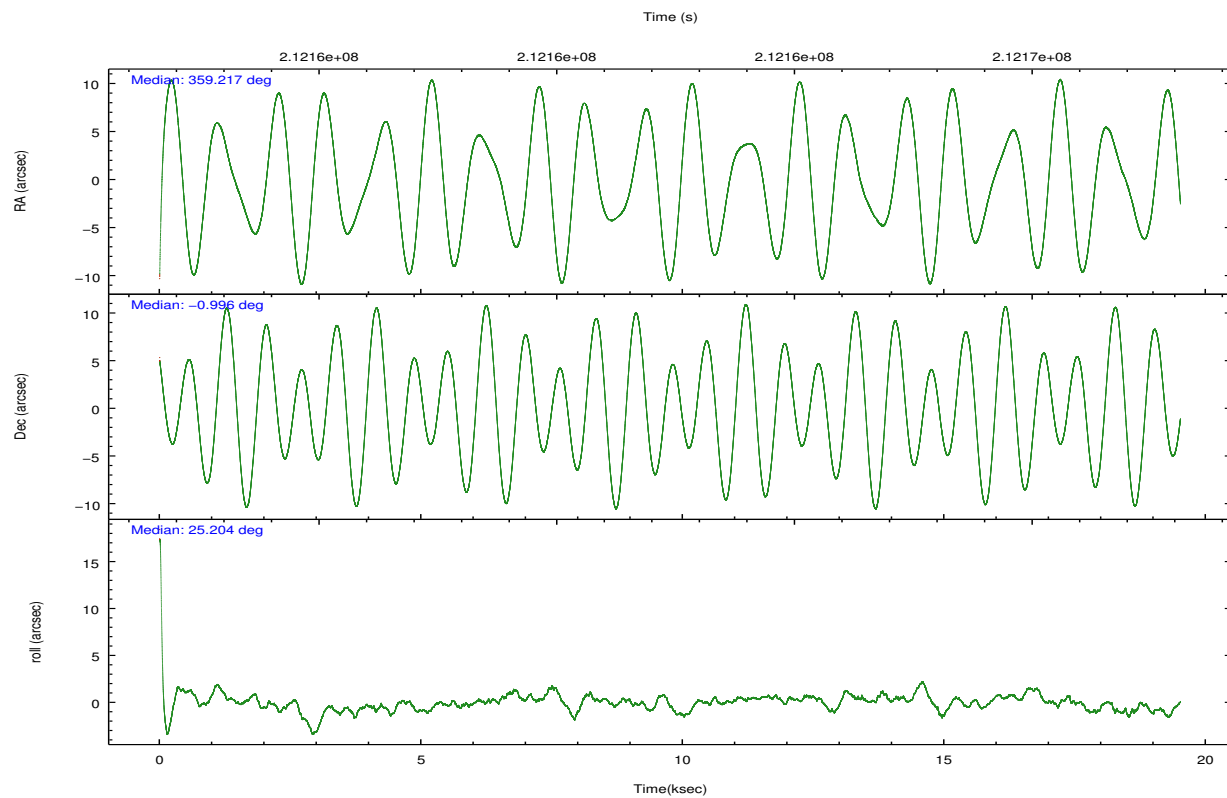
	ccd 0	ccd 1	ccd 2	ccd 3
level 1 events	140962	142048	155419	153821
rejected events	119649	120347	134558	133224
rejected %	84%	84%	86%	86%

	ccd 0	ccd 1	ccd 2	ccd 3
grade 0 events	9633	8753	9835	9453
	6%	6%	6%	6%
grade 1 events	108	83	105	96
	0%	0%	0%	0%
grade 2 events	5349	5925	4689	4982
	3%	4%	3%	3%
grade 3 events	1853	1939	1787	1740
	1%	1%	1%	1%
grade 4 events	1729	1845	1919	1723
	1%	1%	1%	1%
grade 5 events	6131	6302	5788	6512
	4%	4%	3%	4%
grade 6 events	3883	4400	3748	3806
	2%	3%	2%	2%
grade 7 events	112276	112801	127548	125509
	79%	79%	82%	81%

## 2.2 Compared Parameters

Parameter	Planned	Actual	Parameter	Planned	Actual
Instrument	ACIS	ACIS	Obspar format version number	7	7
Detector	ACIS-0123	ACIS-0123	Obspar file type	PREDICTED	ACTUAL
Grating	NONE	NONE	Obspar update status	NONE	UPDATED
Data mode	VFAINT	VFAINT	Number of optional ACIS chips dropped	0	0
Observation mode	POINTING	POINTING	On-chip summing requested	N	N
[deg] Pointing RA	359.201060	359.2166501455309	Subarray requested	NONE	NONE
[deg] Pointing Dec	-1.017965	-0.9954169256023465	Alternating exposures requested	N	N
[deg] Pointing Roll	24.999581	25.2085550018652	[s] Primary exposure time	0.000000	3.1
[mm] SIM focus pos	-0.782348	-0.7809083437167272			
[mm] SIM defocus	0	0.001439871863259334			
[mm] SIM translation stage pos	-233.592463	-233.5874344608287			
[mm] SIM translation stage offset	0	-0.005018542100998502			
[s] Observation start time (MET)	212152780.184000	212151390.61842			
Observation start date	2004-09-21T11:18:36	2004-09-21T10:56:30			
[s] Observation end time (MET)	212172151.184000	212173295.89439			
Observation end date	2004-09-21T16:41:27	2004-09-21T17:01:35			
Read mode	TIMED	TIMED			

## 2.3 Aspect

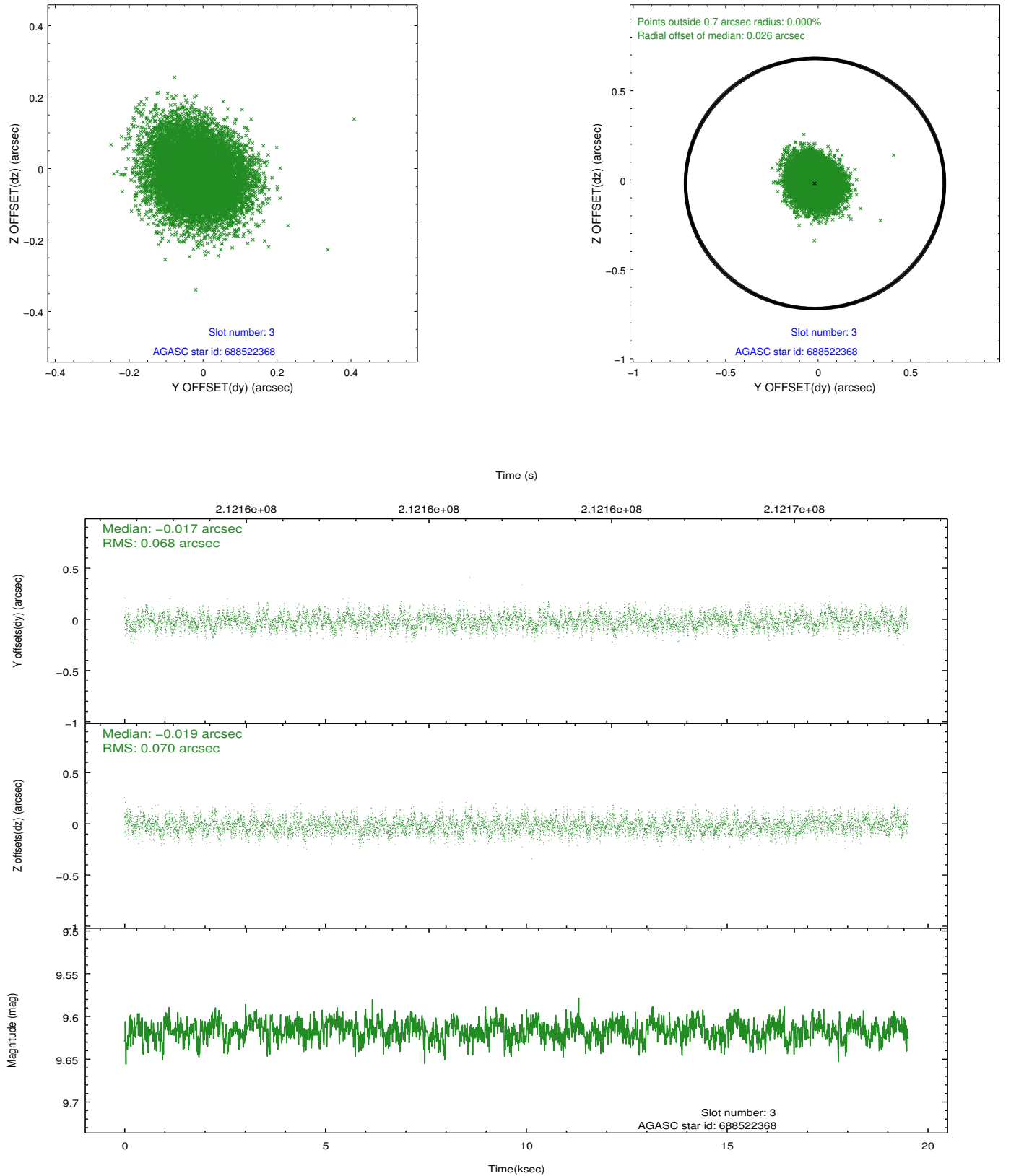


### Slot Statistics

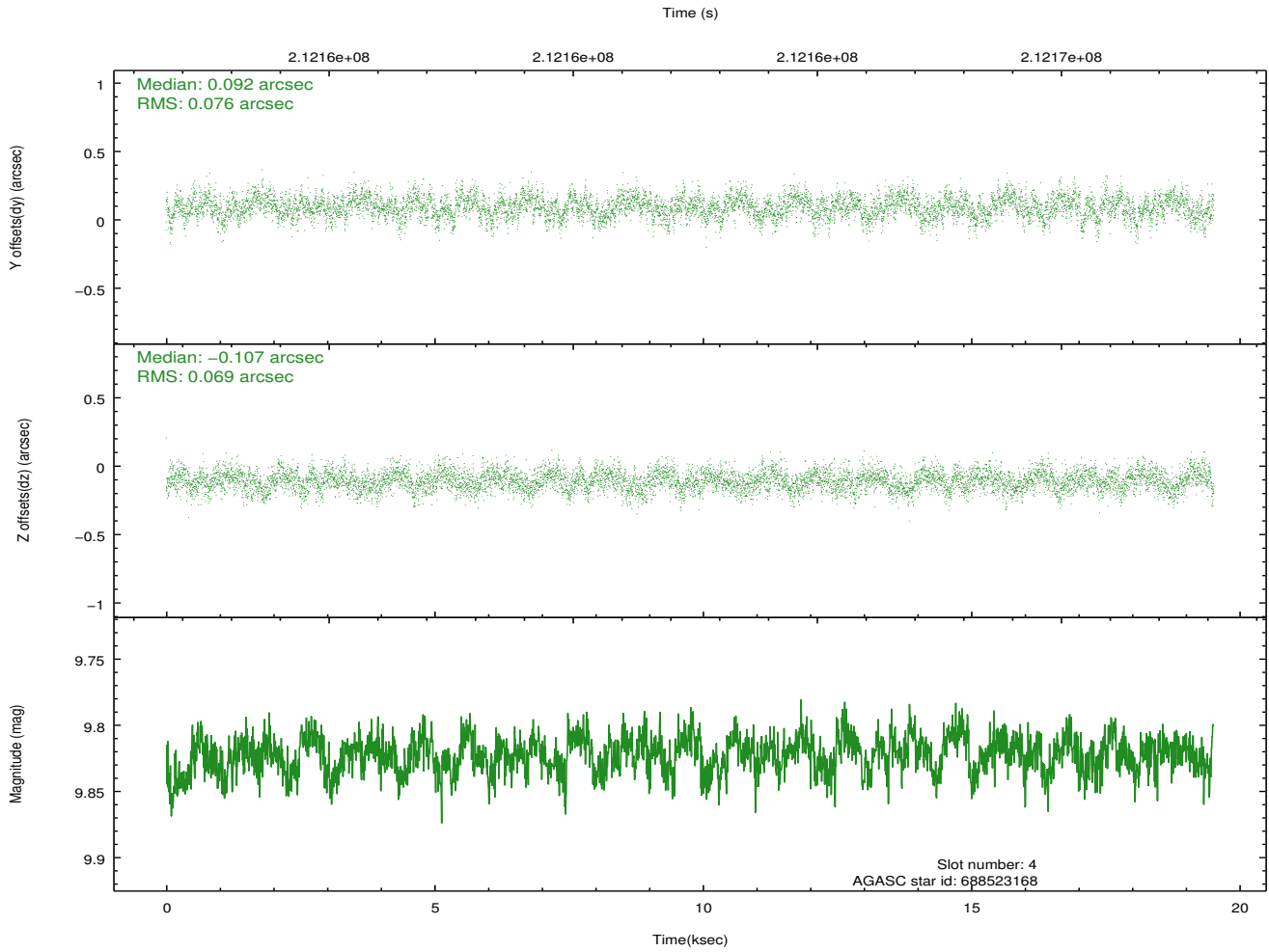
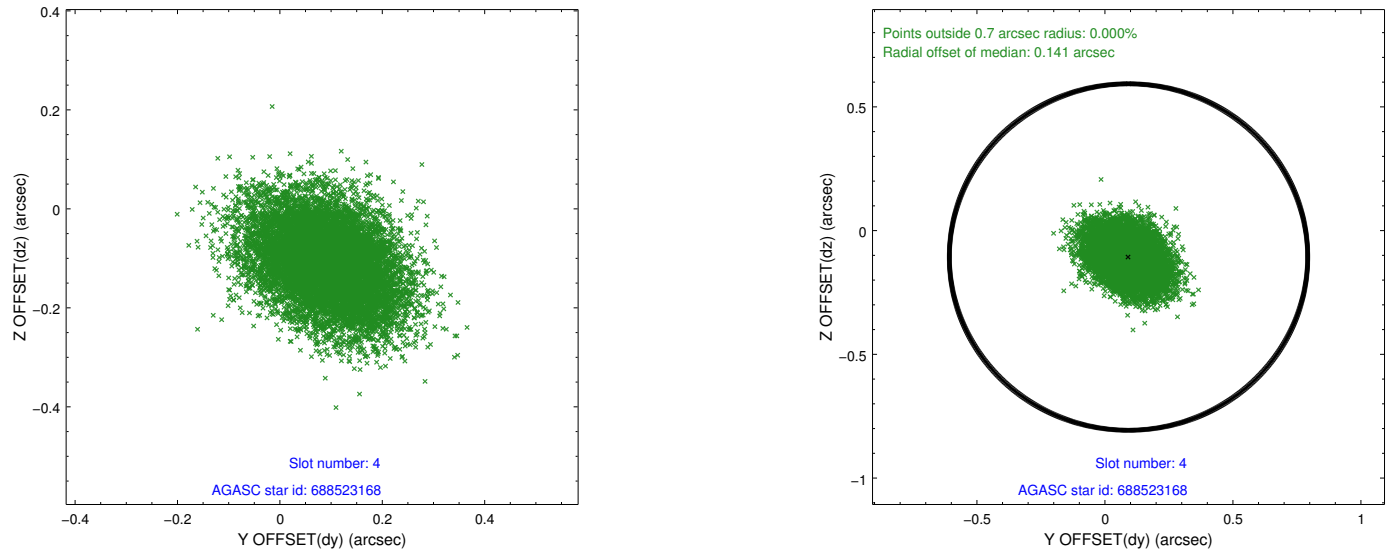
slot	status	id	mag	n_pts	med_dy	med_dz	dr1	dr2	ra	dec	mean_y	mean_z
0	FID	ACIS-I-1	7.24	4761	0.017	0.005	0.027	0.036	0.000000	0.000000	931.99	-834.06
1	FID	ACIS-I-5	7.23	4761	-0.164	0.036	0.017	0.026	0.000000	0.000000	-1816.17	1063.39
2	FID	ACIS-I-6	7.25	4761	0.054	0.027	0.016	0.024	0.000000	0.000000	397.38	1708.09
3	GUIDE	688522368	9.62	9514	-0.017	-0.019	0.105	0.166	359.208550	-0.509657	798.02	1647.53
4	GUIDE	688523168	9.82	9513	0.092	-0.107	0.108	0.180	358.843792	-1.079337	-1258.63	343.44
5	GUIDE	688524616	8.90	9519	0.002	0.087	0.068	0.110	358.823399	-1.572868	-2075.92	-1235.93
6	GUIDE	688526568	8.85	9515	-0.002	-0.042	0.072	0.116	359.115698	-0.932325	-148.28	409.40
7	GUIDE	688526856	9.26	9513	-0.074	0.083	0.097	0.159	359.962410	-1.196707	2212.11	-1740.63

## 2.4 Star Slots

### 2.4.1 Slot 3

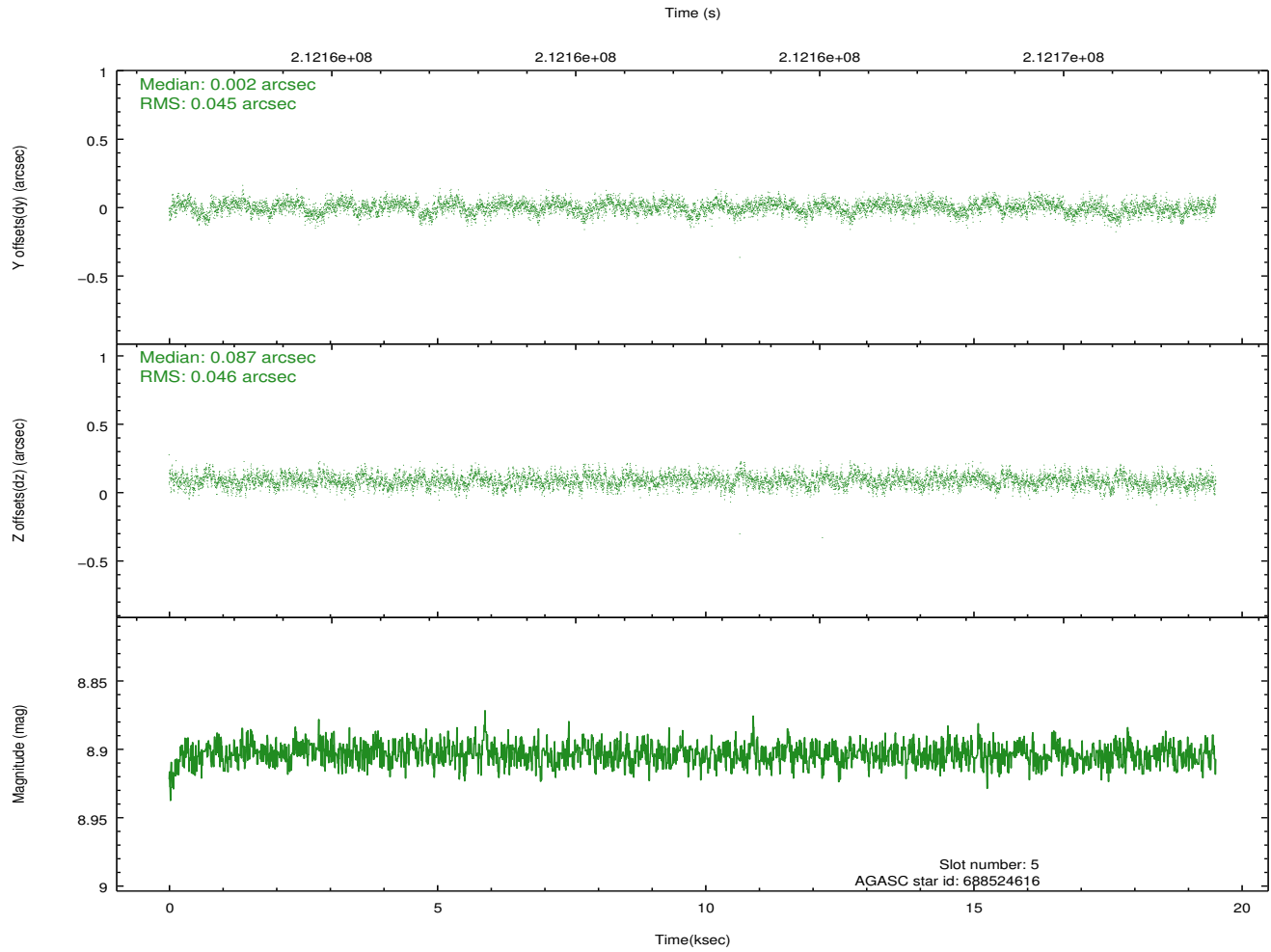
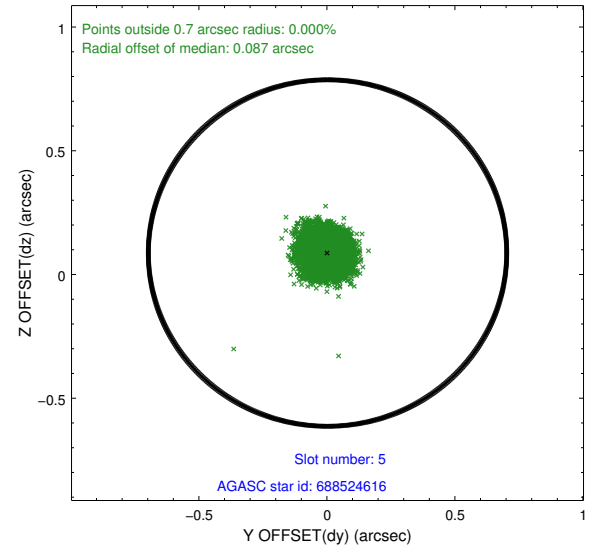
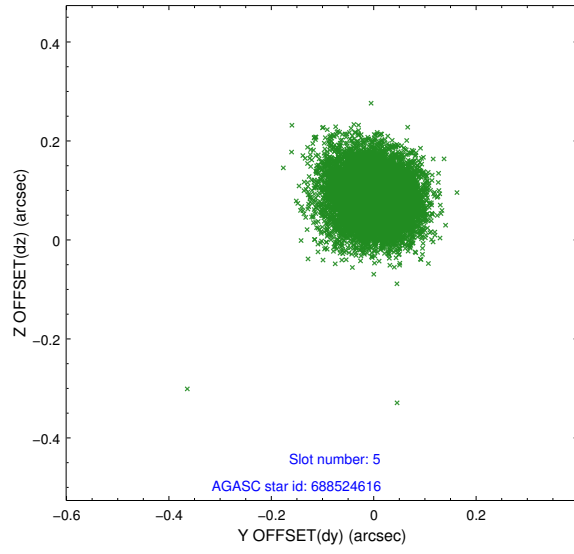


## 2.4.2 Slot 4

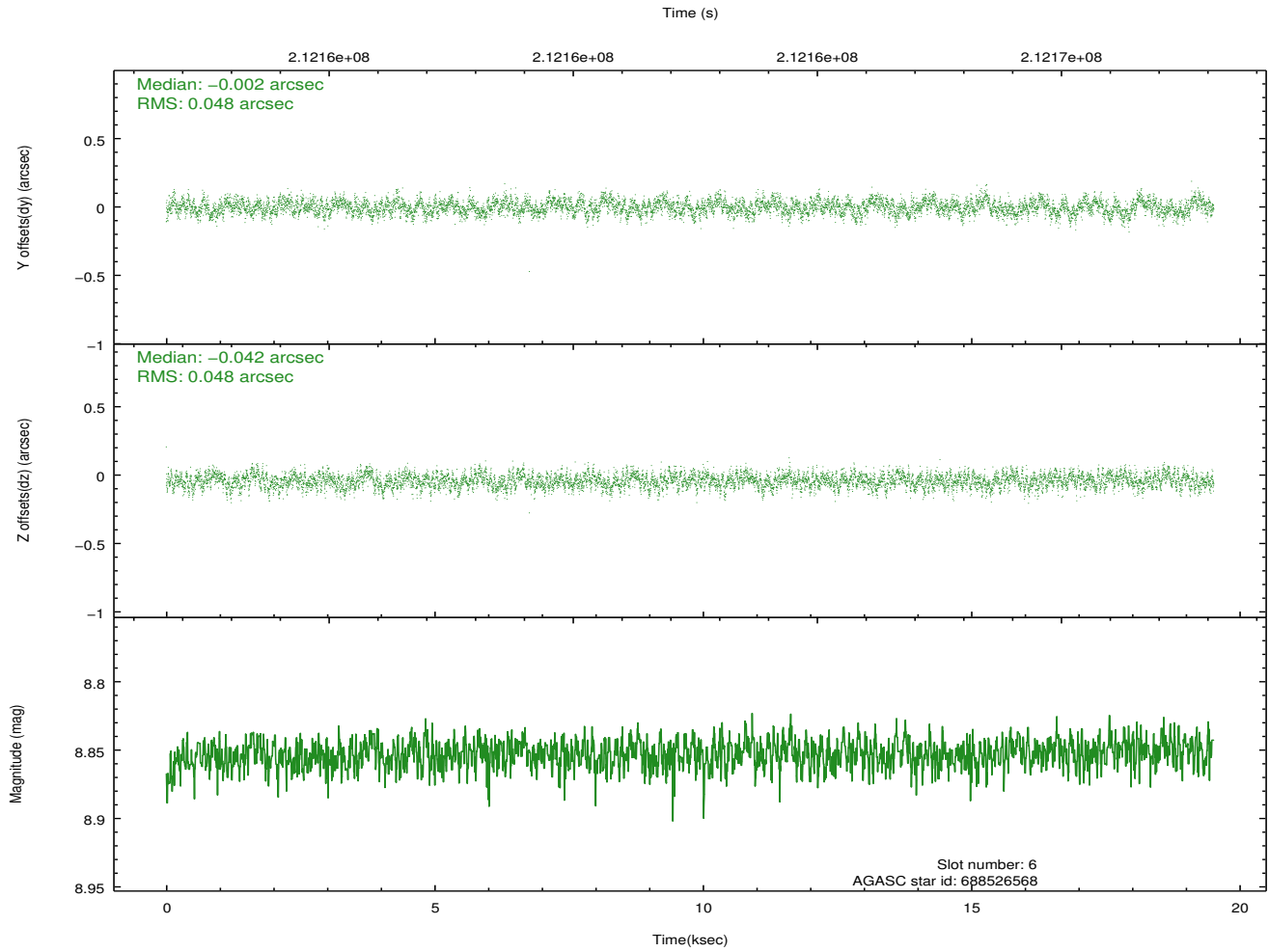
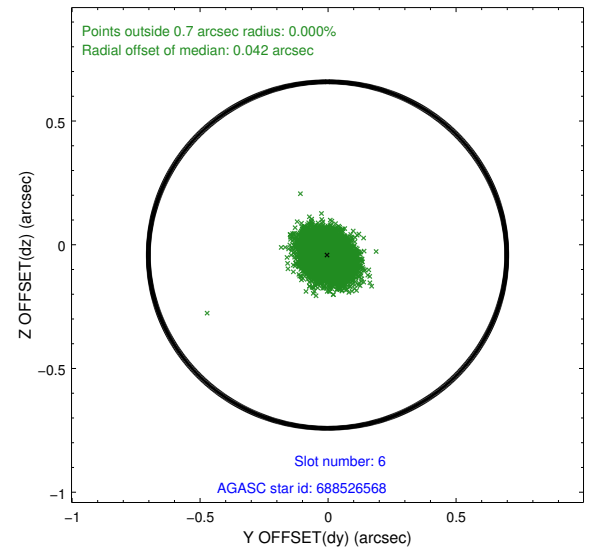
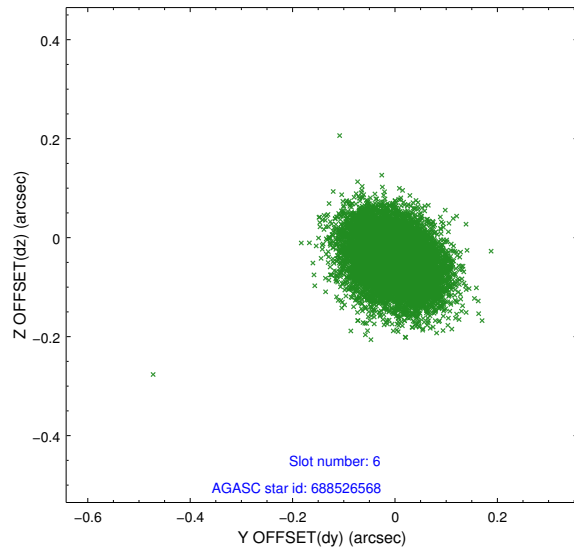




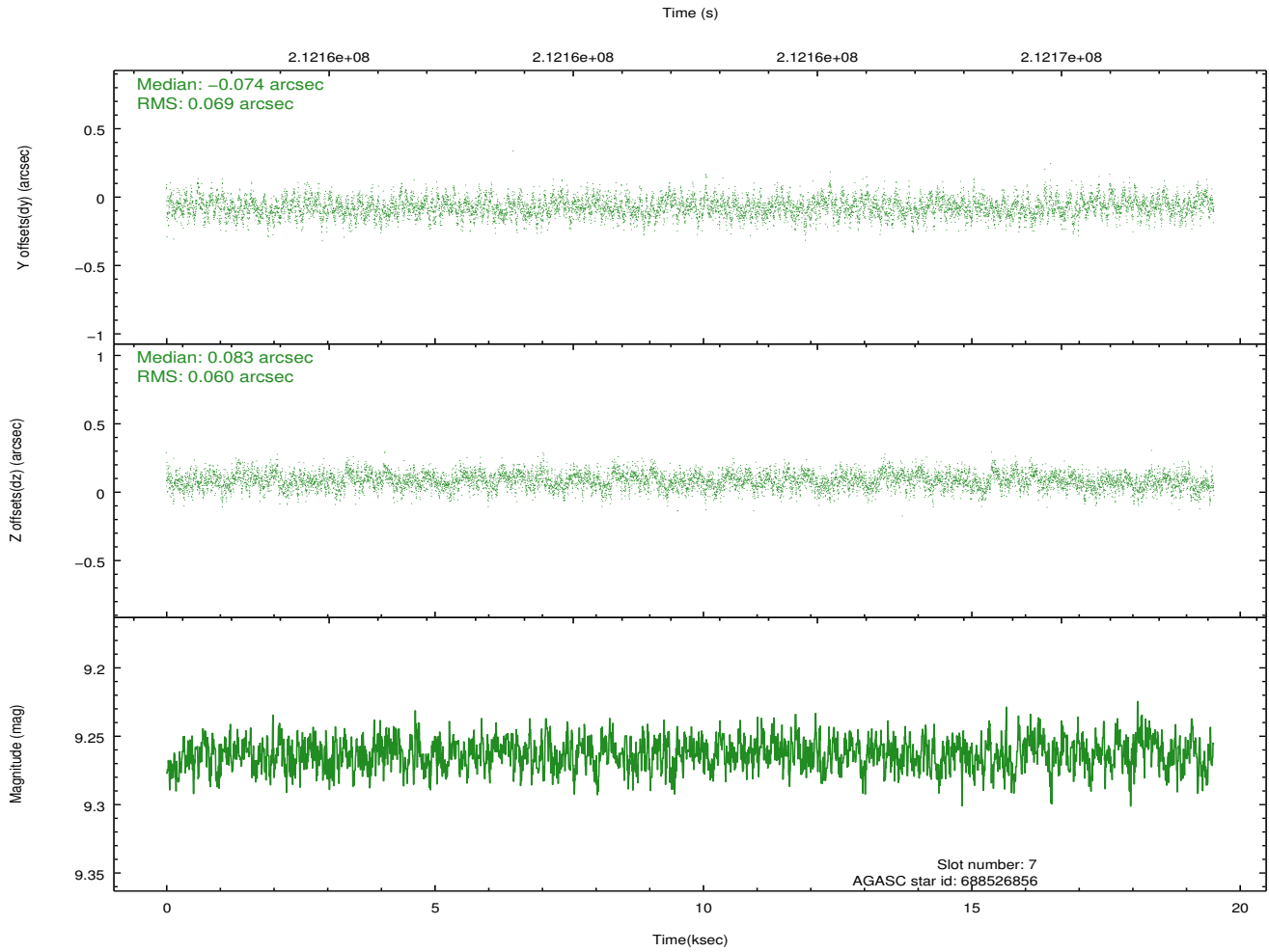
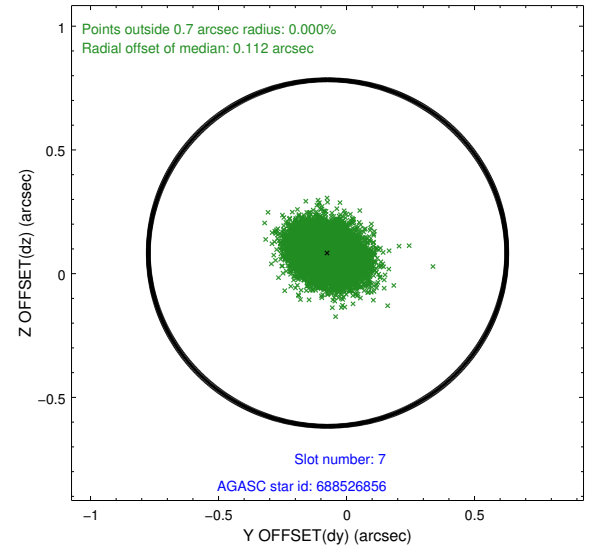
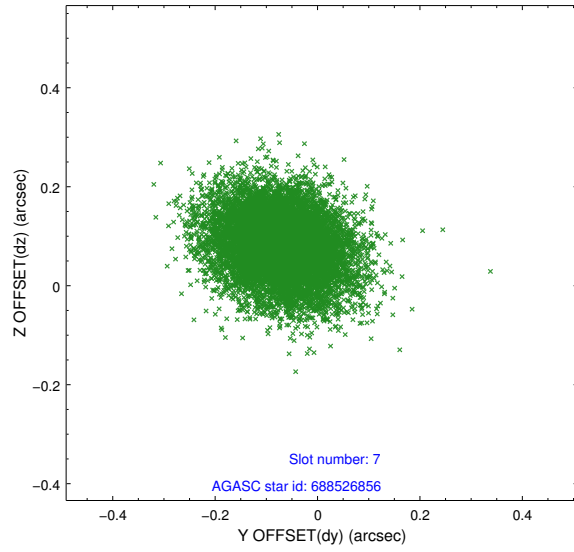
### 2.4.3 Slot 5



## 2.4.4 Slot 6

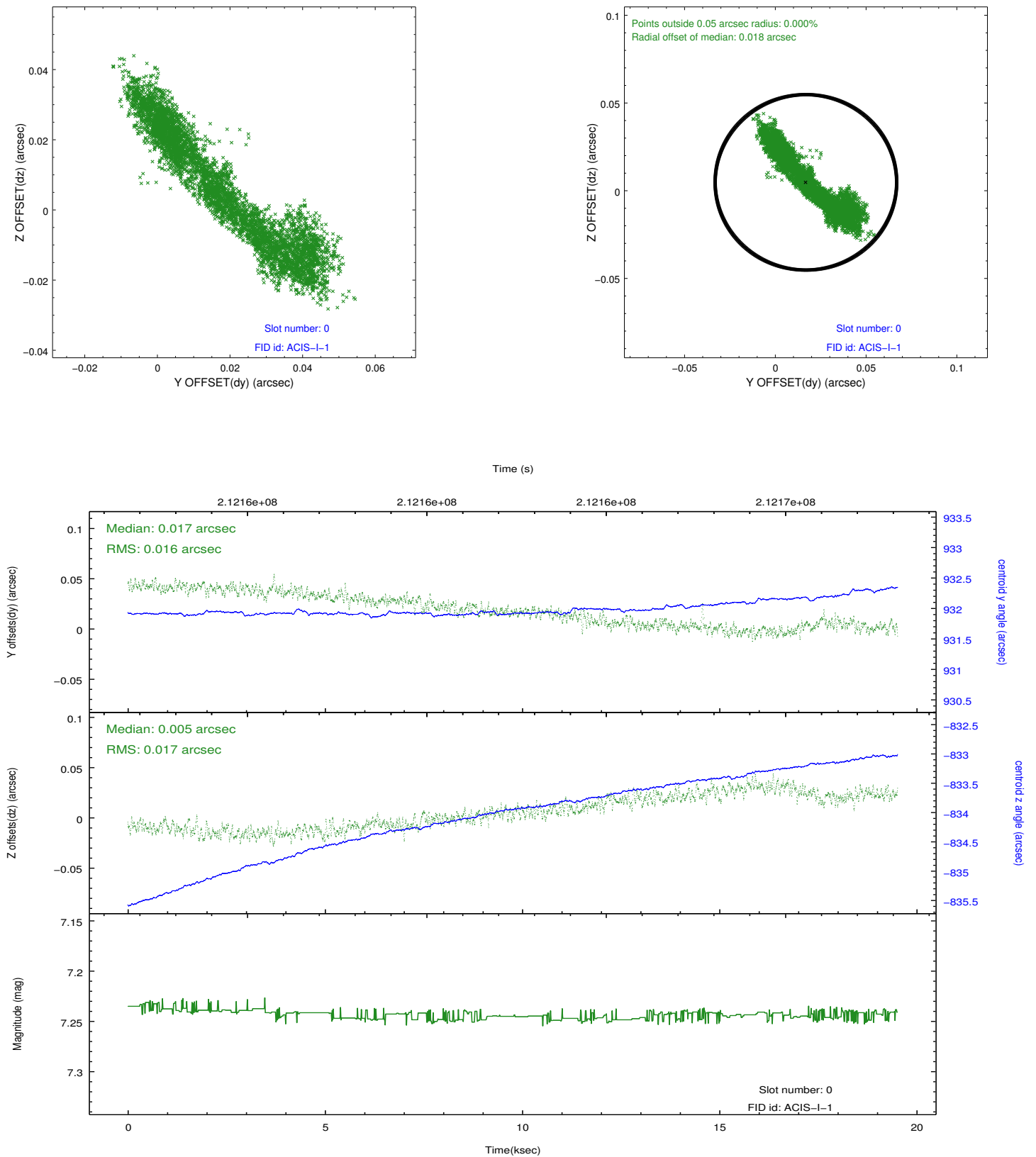


## 2.4.5 Slot 7

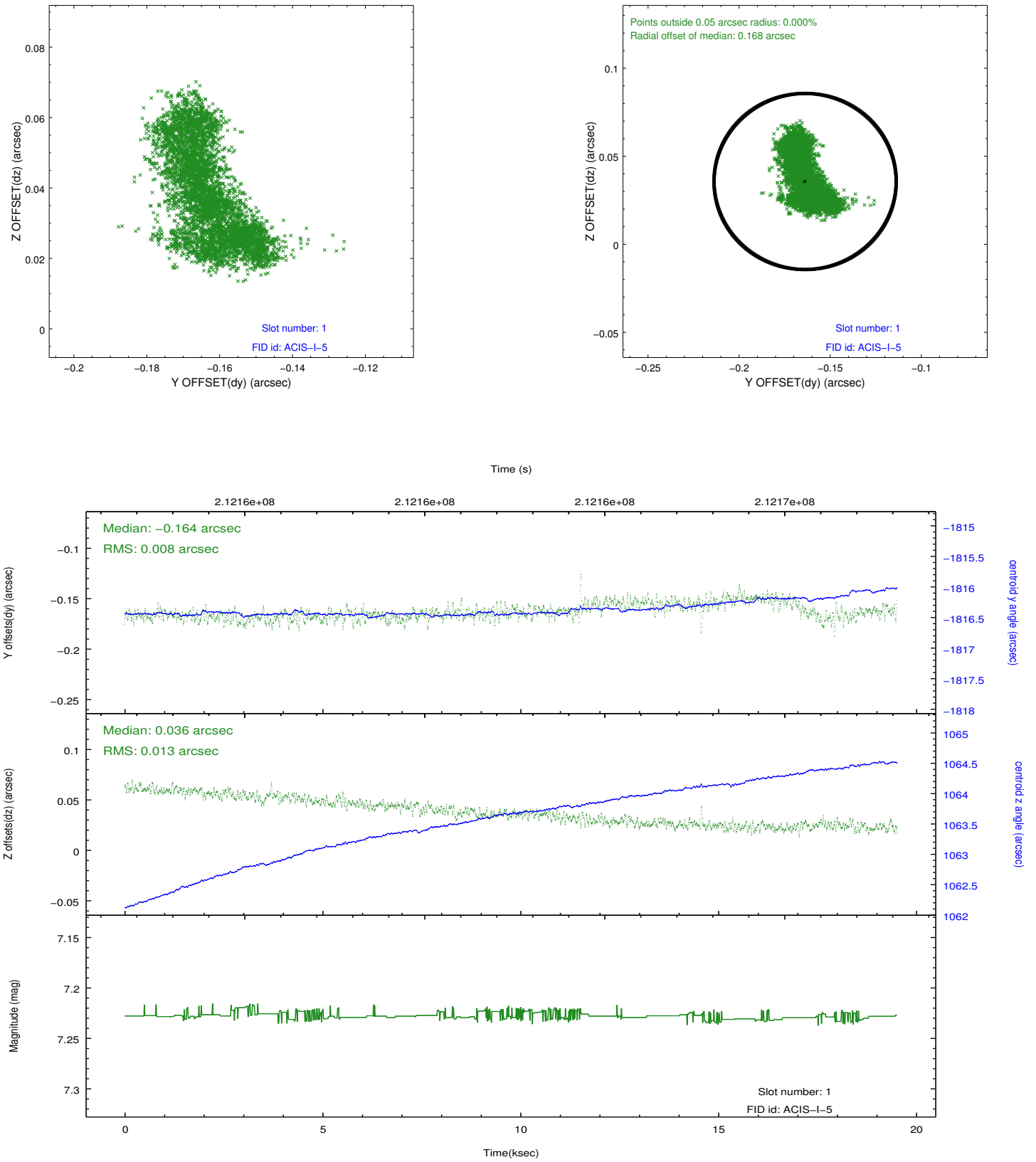


## 2.5 FID Slots

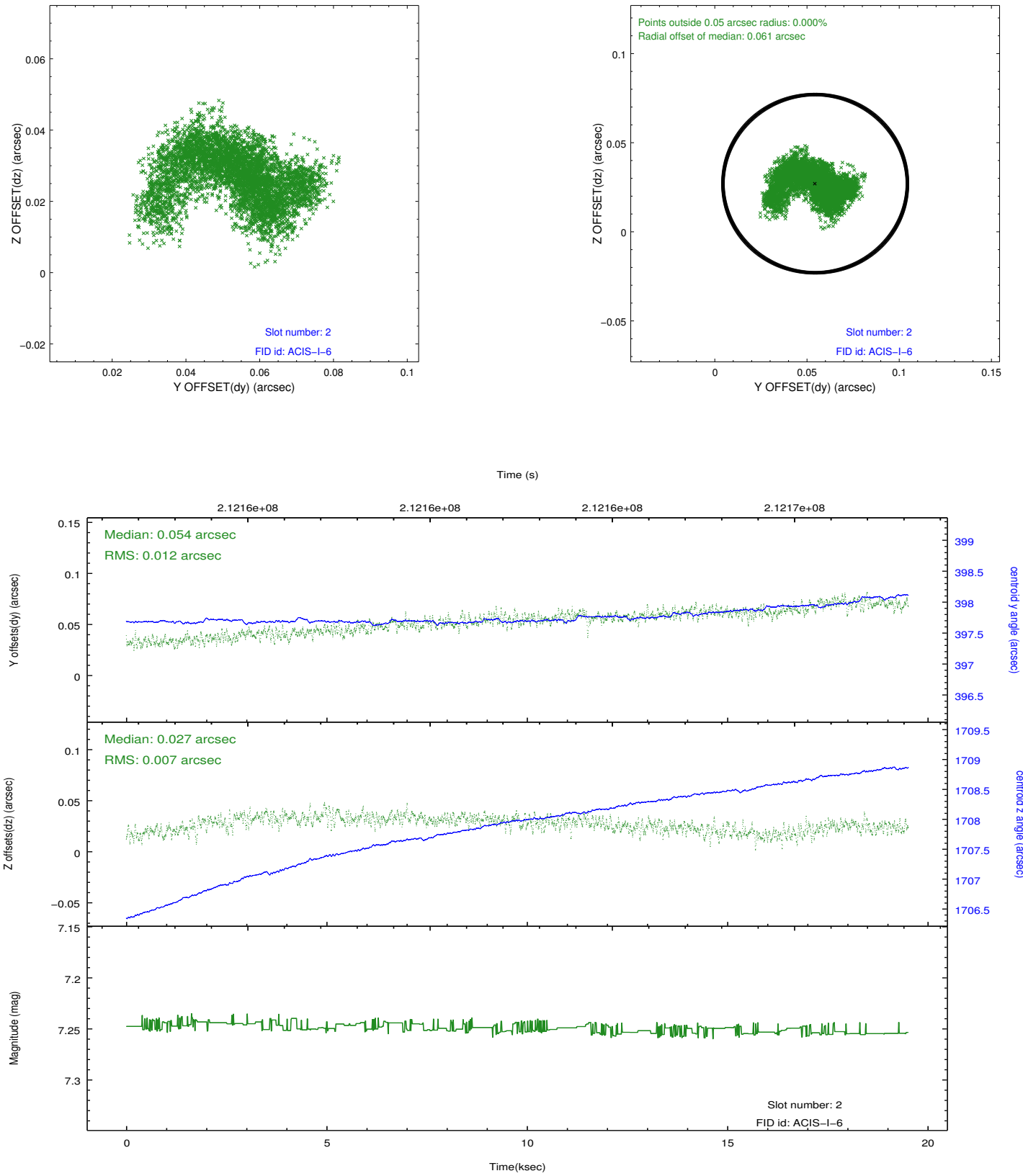
### 2.5.1 Slot 0



## 2.5.2 Slot 1



### 2.5.3 Slot 2



## A Summary

### A.1 Status

V&V Scientist	Beth Sundheim
V&V Date (YYYY-MM-DD)	2012.12.31
V&V Edition	1
V&V Disposition and Status	OK
V&V Charge Time	19.508

### A.2 Comments