

# V&V Reference Report

## L2 ASCDS Version : 7.6.7.1

Observation 6129 - L2 Version 001  
Chandra X-Ray Center

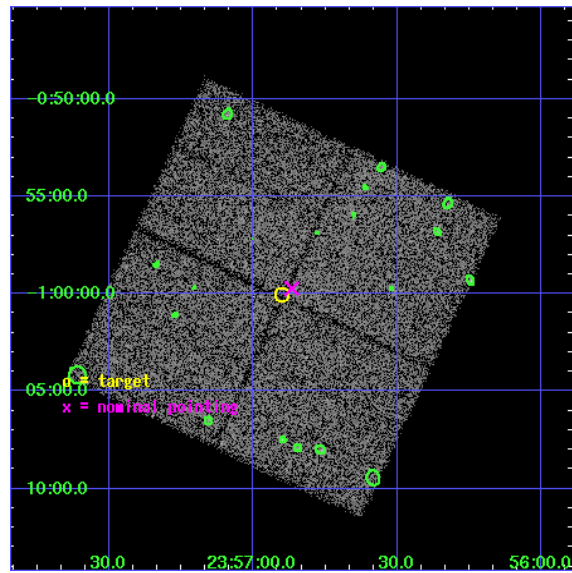
L2 Processing Date : Apr 17 2006

## Contents

<b>1</b>	<b>Front</b>	<b>2</b>
<b>2</b>	<b>OBI</b>	<b>3</b>
2.1	OBI . . . . .	3
2.1.1	Images . . . . .	3
2.1.2	Bias . . . . .	3
2.1.3	Parameters . . . . .	4
2.1.4	Events . . . . .	4
2.2	Compared Parameters . . . . .	5
2.3	Aspect . . . . .	6
2.4	Star Slots . . . . .	9
2.4.1	Slot 3 . . . . .	9
2.4.2	Slot 4 . . . . .	10
2.4.3	Slot 5 . . . . .	11
2.4.4	Slot 6 . . . . .	12
2.4.5	Slot 7 . . . . .	13
2.5	FID Slots . . . . .	14
2.5.1	Slot 0 . . . . .	14
2.5.2	Slot 1 . . . . .	15
2.5.3	Slot 2 . . . . .	16
<b>3</b>	<b>Point Sources</b>	<b>17</b>
<b>A</b>	<b>Summary</b>	<b>18</b>
A.1	Status . . . . .	18
A.2	Comments . . . . .	18

# 1 Front

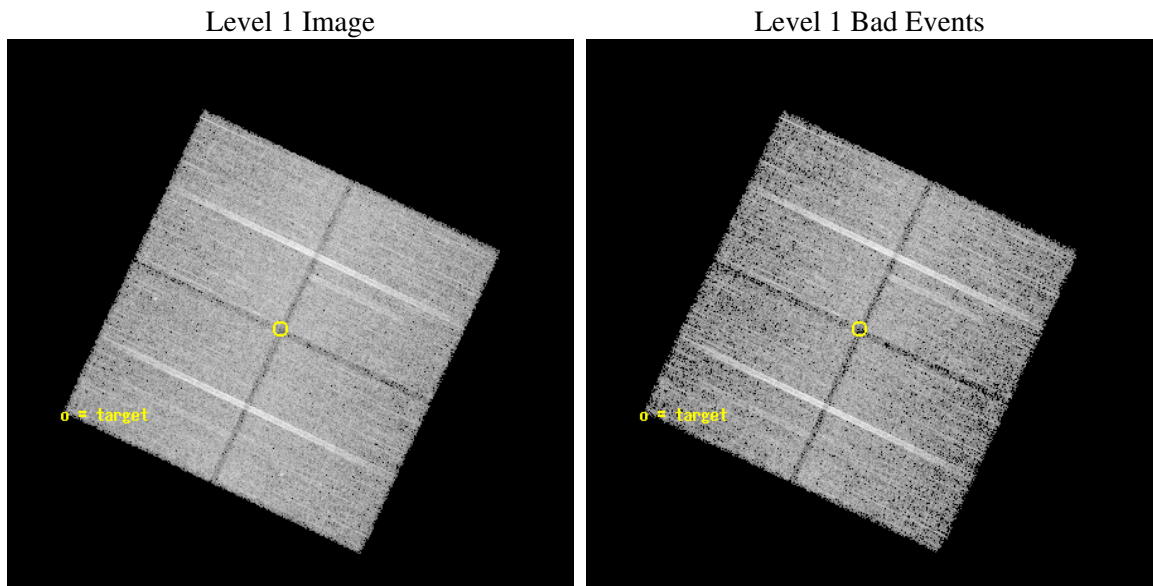
seq_num	500591
obs_id	6129
title	GRB040912: An Unusual Event Exhibiting Strong Spectral Evolution from a GRB to an XRF
observer	Dr. george Ricker
object	GRB040912
dtcycle	0
cycle	P
ra_targ	359.225
dec_targ	-1.000556
ra_nom	359.21662496463
dec_nom	-0.99542866325531
roll_nom	25.208554556848
revision	2
ontime	19508.258982241
livetime	19253.369216867
ontime0	19511.399962485
ontime1	19508.258992255
ontime2	19511.399962485
ontime3	19508.258982241
l2events	72762



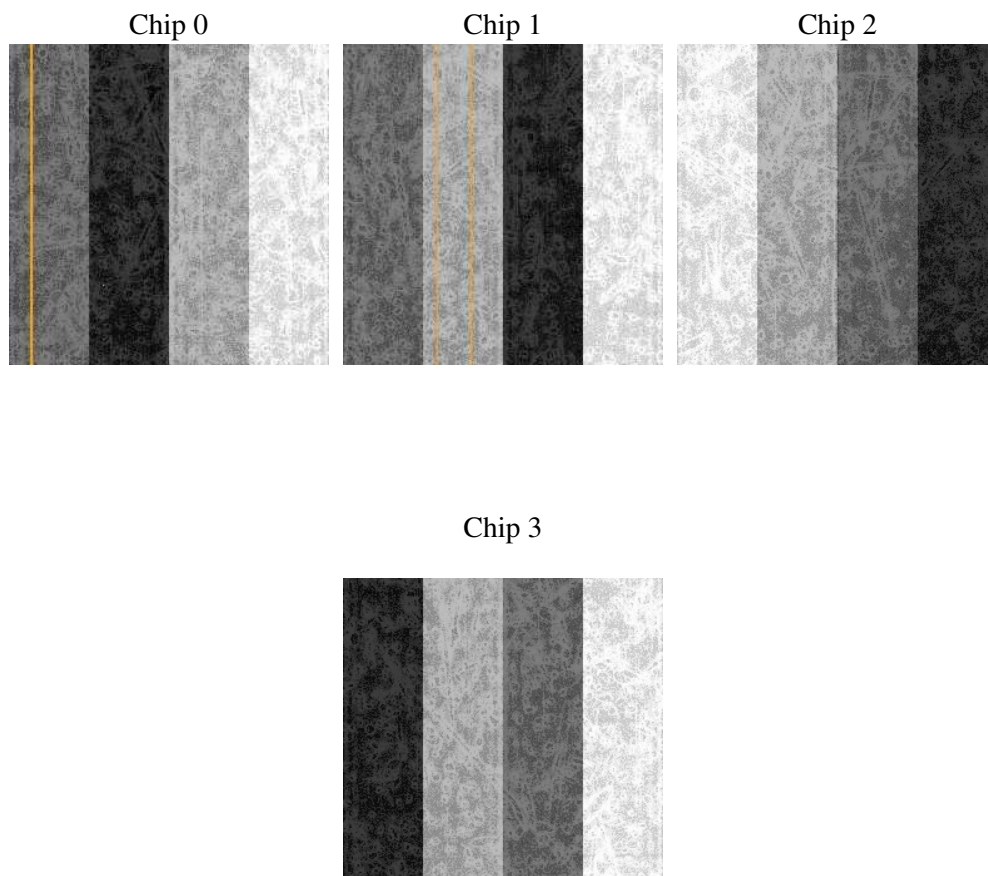
## 2 OBI

### 2.1 OBI

#### 2.1.1 Images



#### 2.1.2 Bias



### 2.1.3 Parameters

obi_num	0
ascdsver	7.6.7.1
caldbver	3.2.1
date	2006-04-17T20:42:55
revision	2

sched_exp_time	19371.000000
ontime	20473.075905263
ontime0	20476.216885507
ontime1	20473.075935215
ontime2	20476.216905445
ontime3	20473.075905263
l1events	592250

### 2.1.4 Events

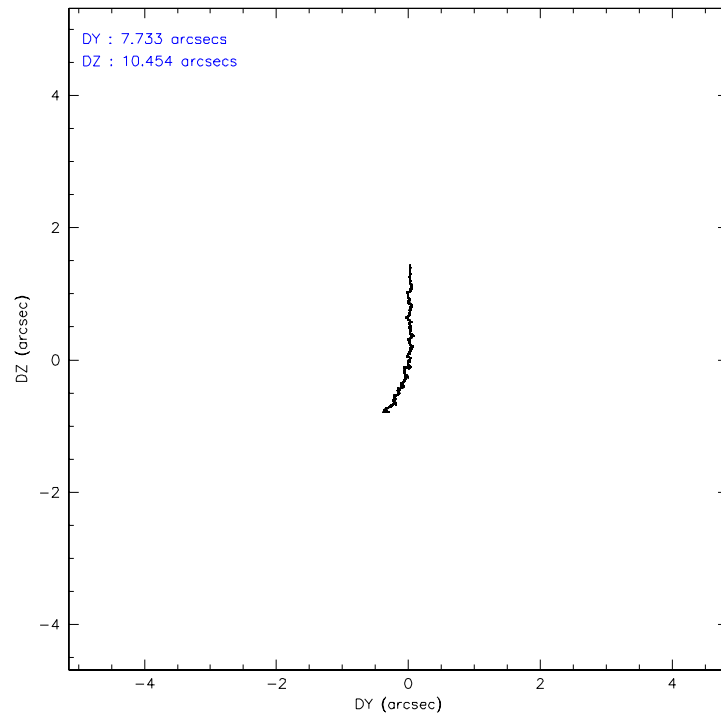
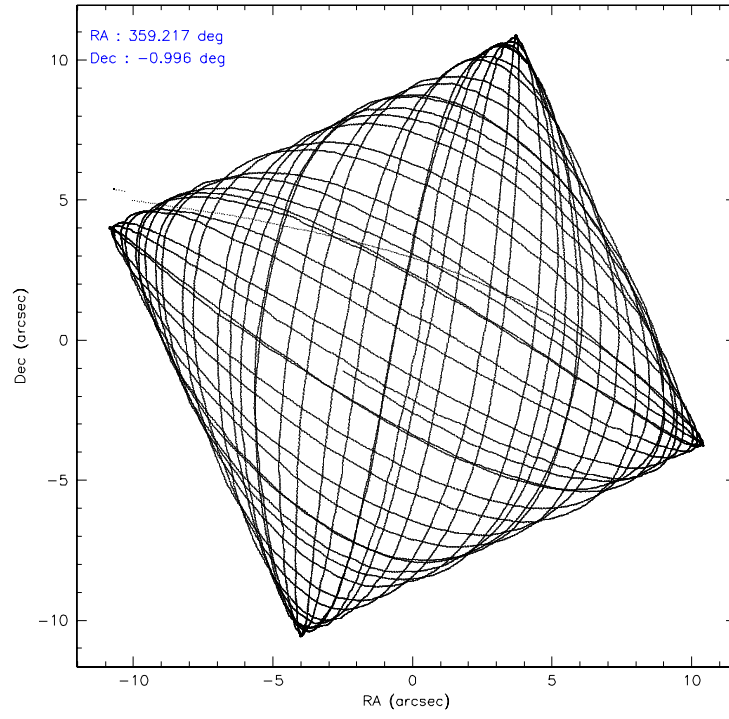
	<b>ccd 0</b>	<b>ccd 1</b>	<b>ccd 2</b>	<b>ccd 3</b>
level 1 events	140962	142048	155419	153821
rejected events	119646	120347	134556	133224
rejected %	84%	84%	86%	86%

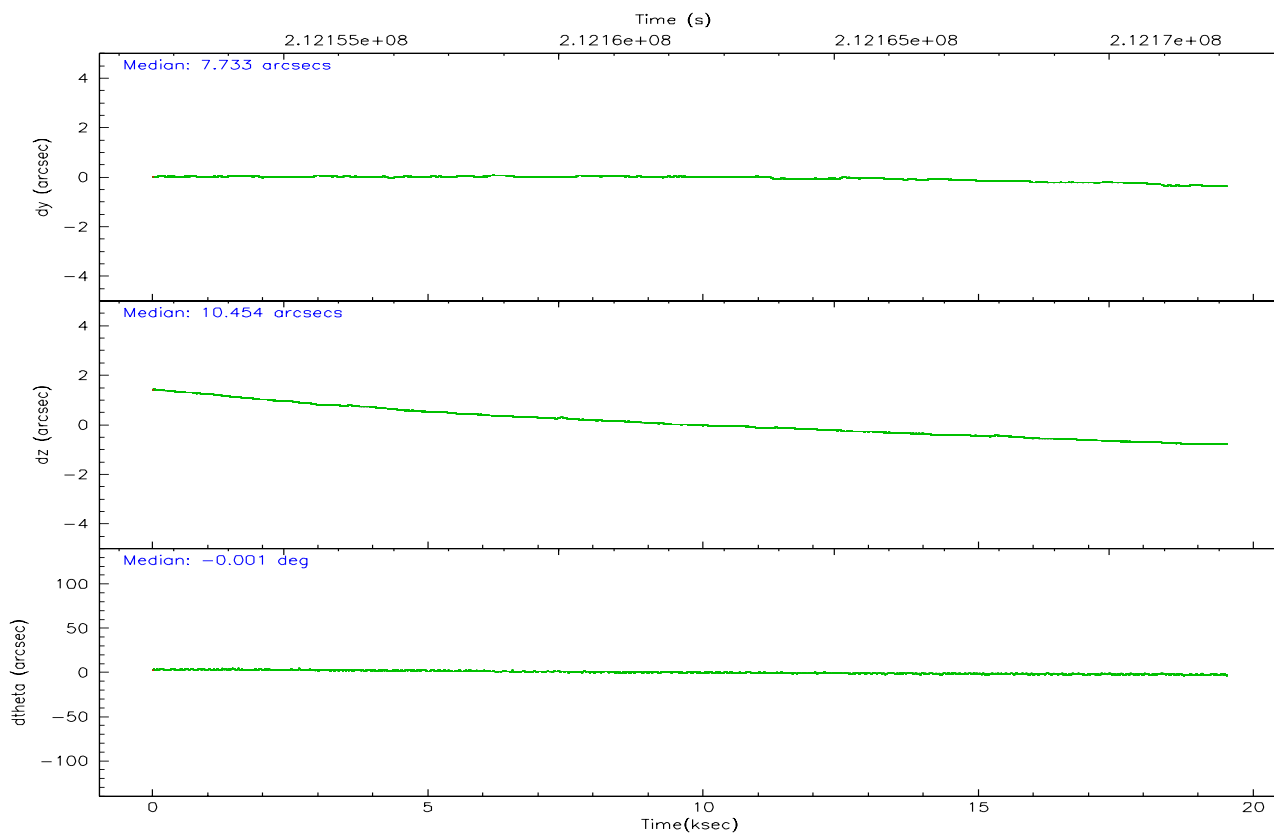
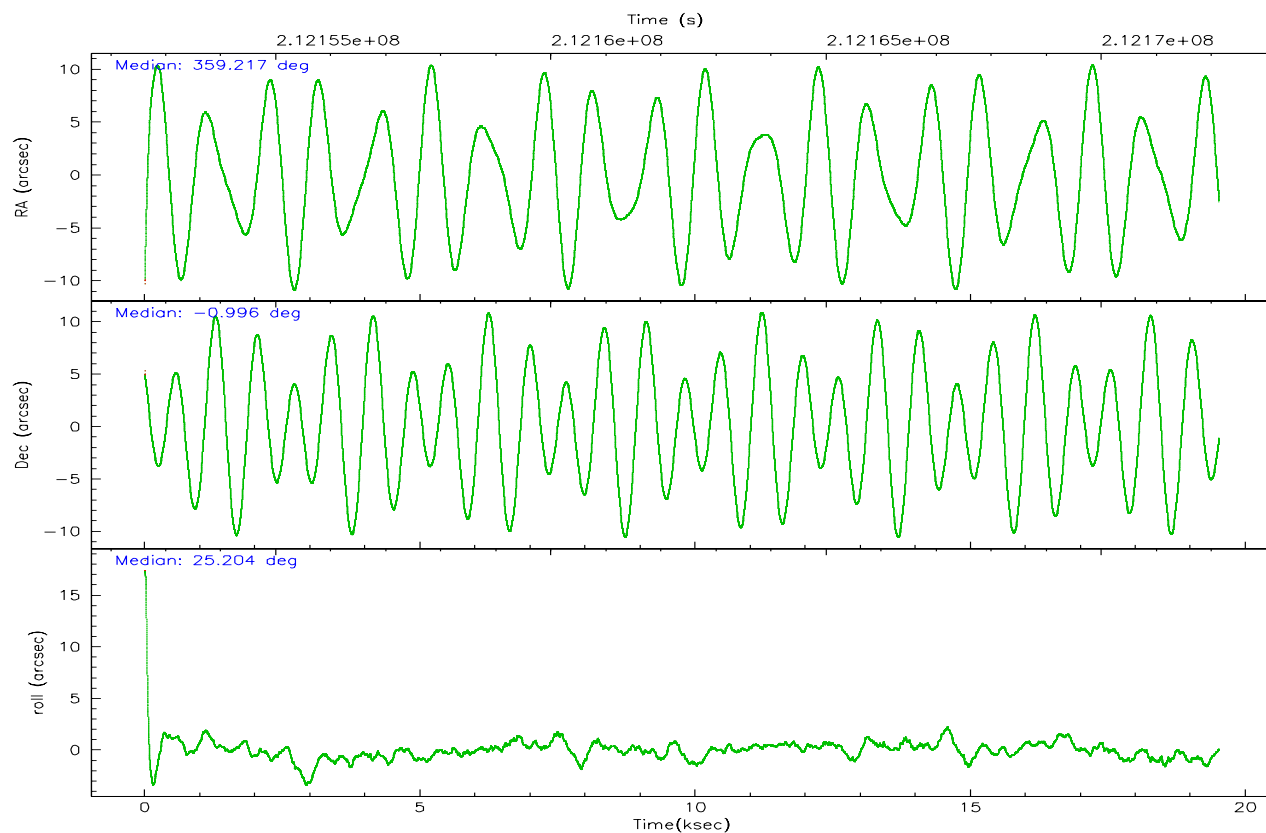
	<b>ccd 0</b>	<b>ccd 1</b>	<b>ccd 2</b>	<b>ccd 3</b>
grade 0 events	9633	8753	9835	9453
	6%	6%	6%	6%
grade 1 events	108	83	105	96
	0%	0%	0%	0%
grade 2 events	5349	5925	4689	4982
	3%	4%	3%	3%
grade 3 events	1853	1939	1787	1740
	1%	1%	1%	1%
grade 4 events	1729	1845	1919	1723
	1%	1%	1%	1%
grade 5 events	6132	6302	5788	6512
	4%	4%	3%	4%
grade 6 events	3883	4400	3748	3806
	2%	3%	2%	2%
grade 7 events	112275	112801	127548	125509
	79%	79%	82%	81%

## 2.2 Compared Parameters

Parameter	Planned	Actual	Parameter	Planned	Actual
Instrument	ACIS	ACIS	Obspar format version number	6	6
Detector	ACIS-0123	ACIS-0123	Obspar file type	PREDICTED	ACTUAL
Grating	NONE	NONE	Obspar update status	NONE	UPDATED
Data mode	VFAINT	VFAINT	On-chip summing requested	N	N
Observation mode	POINTING	POINTING	Subarray requested	NONE	NONE
Pointing RA	359.201060	359.2166249646262	Alternating exposures requested	N	N
Pointing Dec	-1.017965	-0.9954286632553069	Primary exposure time	0.000000	3.1
Pointing Roll	24.999581	25.20855455684794			
SIM focus pos (mm)	-0.782348	-0.7809083437167272			
SIM defocus (mm)	0	0.001439871863259334			
SIM translation stage pos (mm)	-233.592463	-233.5874344608287			
SIM translation stage offset (mm)	0	-0.005018542100998502			
Observation start time	212152780.184000	212151390.61842			
Observation start date	2004-09-21T11:18:36	2004-09-21T10:56:30			
Observation end time	212172151.184000	212173295.89439			
Observation end date	2004-09-21T16:41:27	2004-09-21T17:01:35			
Read mode	TIMED	TIMED			

## 2.3 Aspect





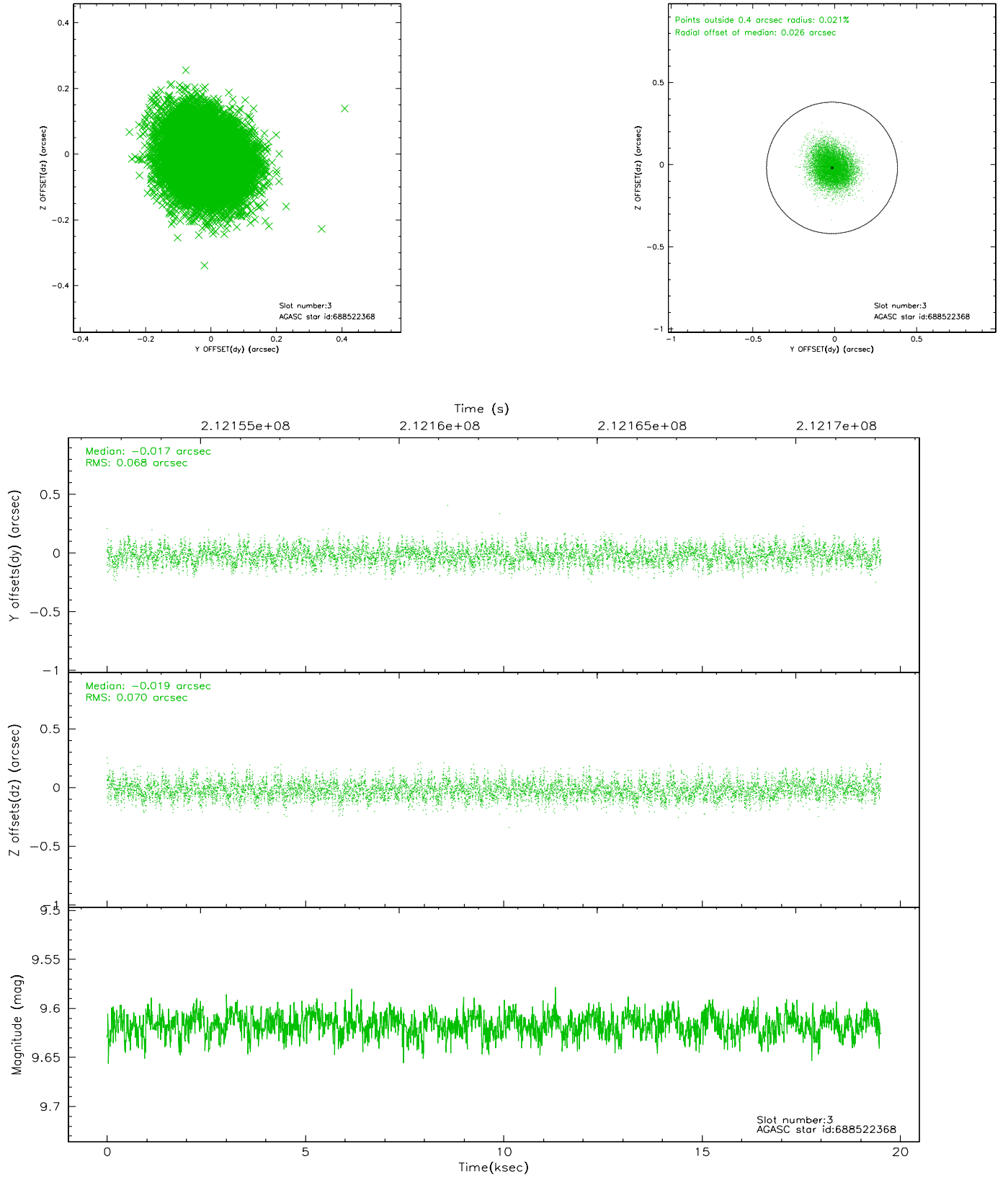
### Slot Statistics

slot	status	id	mag	n_pts	med_dy	med_dz	dr1	dr2	ra	dec	mean_y	mean_z
0	FID	ACIS-I-1	7.24	4761	-0.003	0.032	0.024	0.033	0.000000	0.000000	931.97	-834.02
1	FID	ACIS-I-5	7.23	4761	-0.133	0.028	0.016	0.024	0.000000	0.000000	-1816.14	1063.40
2	FID	ACIS-I-6	7.25	4761	0.045	0.008	0.016	0.025	0.000000	0.000000	397.38	1708.08
3	GUIDE	688522368	9.62	9514	-0.017	-0.019	0.105	0.166	359.208550	-0.509657	798.02	1647.53
4	GUIDE	688523168	9.82	9513	0.092	-0.107	0.108	0.180	358.843792	-1.079337	-1258.63	343.44
5	GUIDE	688524616	8.90	9519	0.002	0.087	0.068	0.110	358.823399	-1.572868	-2075.92	-1235.93
6	GUIDE	688526568	8.85	9515	-0.002	-0.042	0.072	0.116	359.115698	-0.932325	-148.28	409.40
7	GUIDE	688526856	9.26	9513	-0.074	0.083	0.097	0.159	359.962410	-1.196707	2212.11	-1740.63

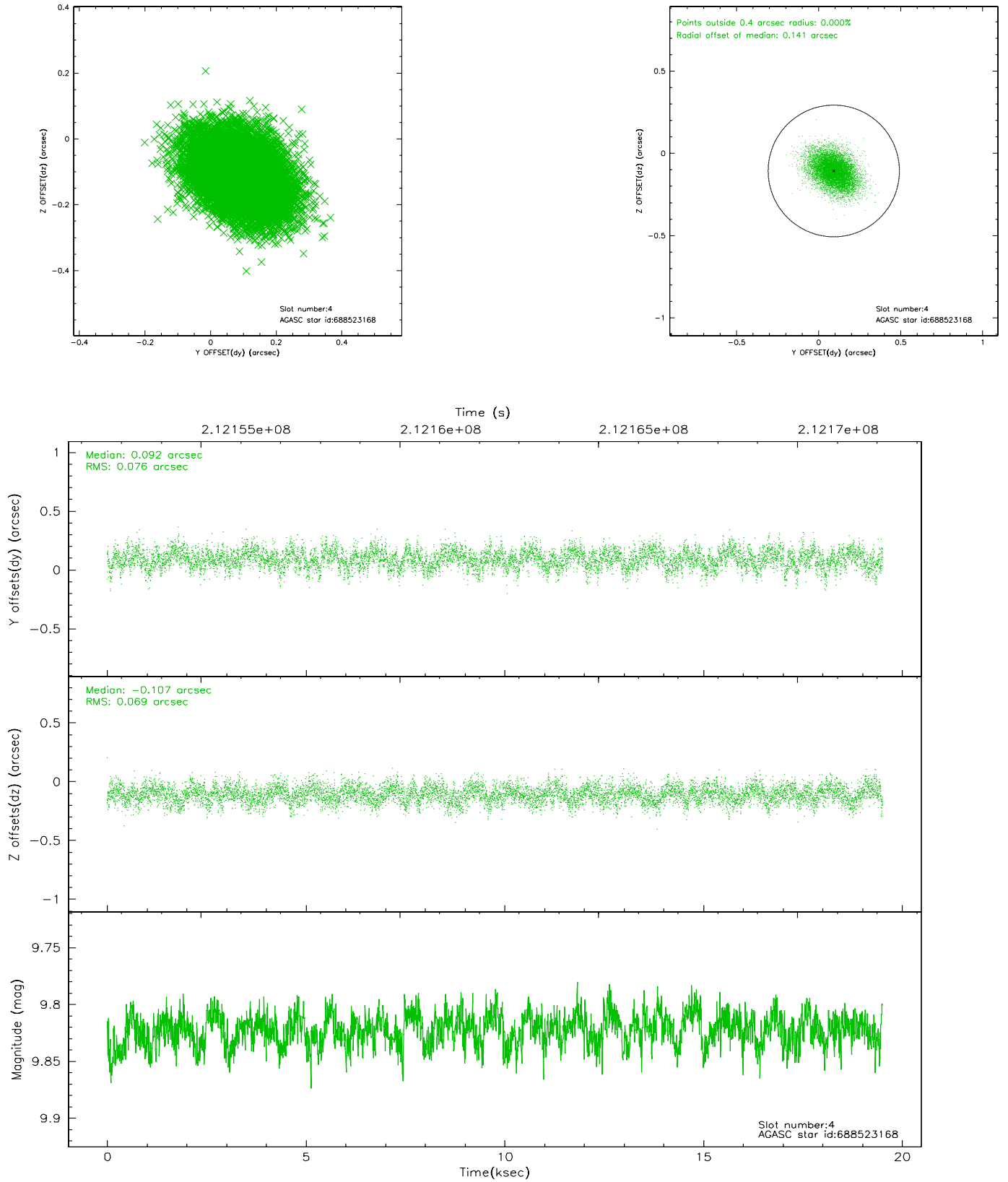


## 2.4 Star Slots

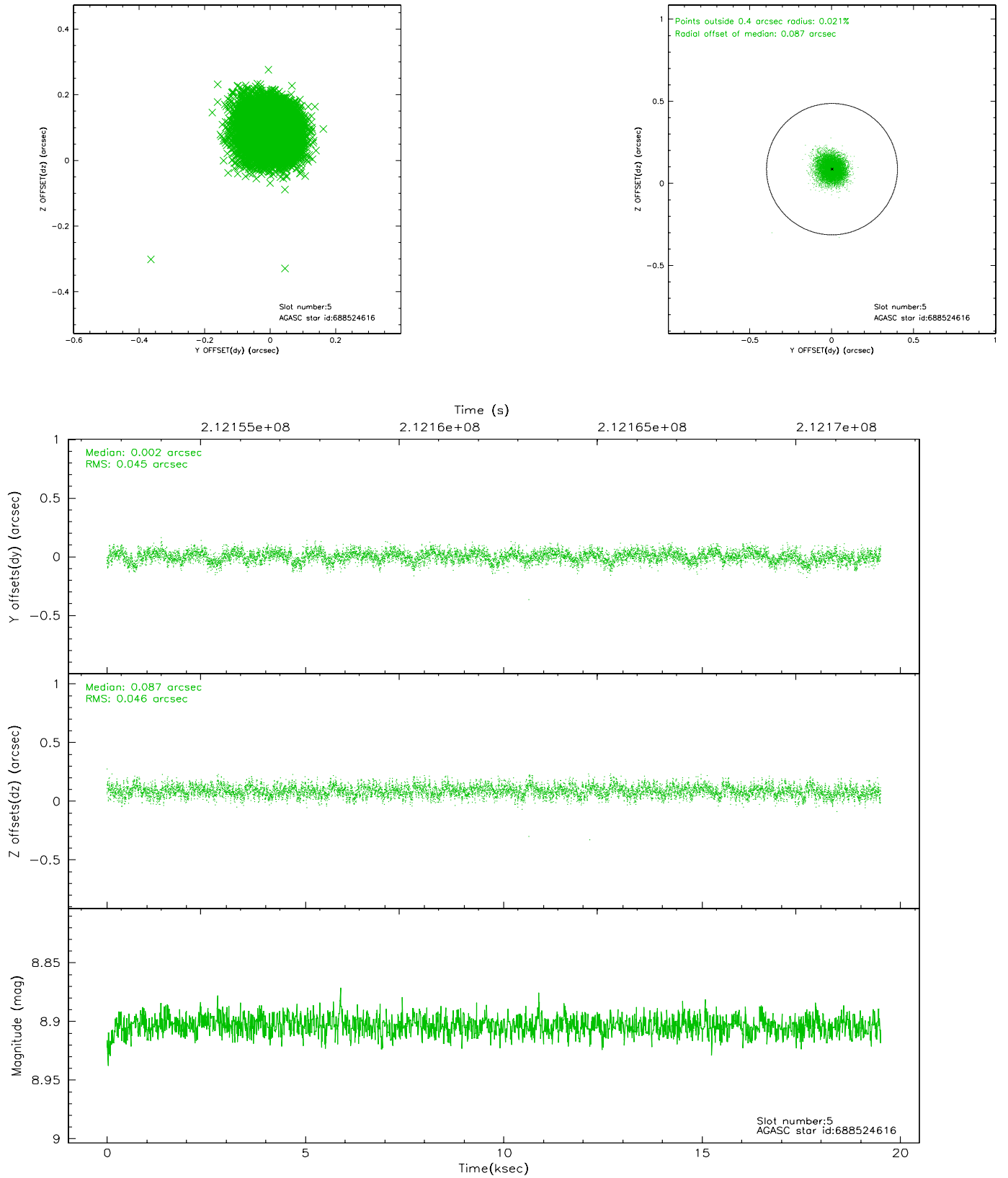
### 2.4.1 Slot 3



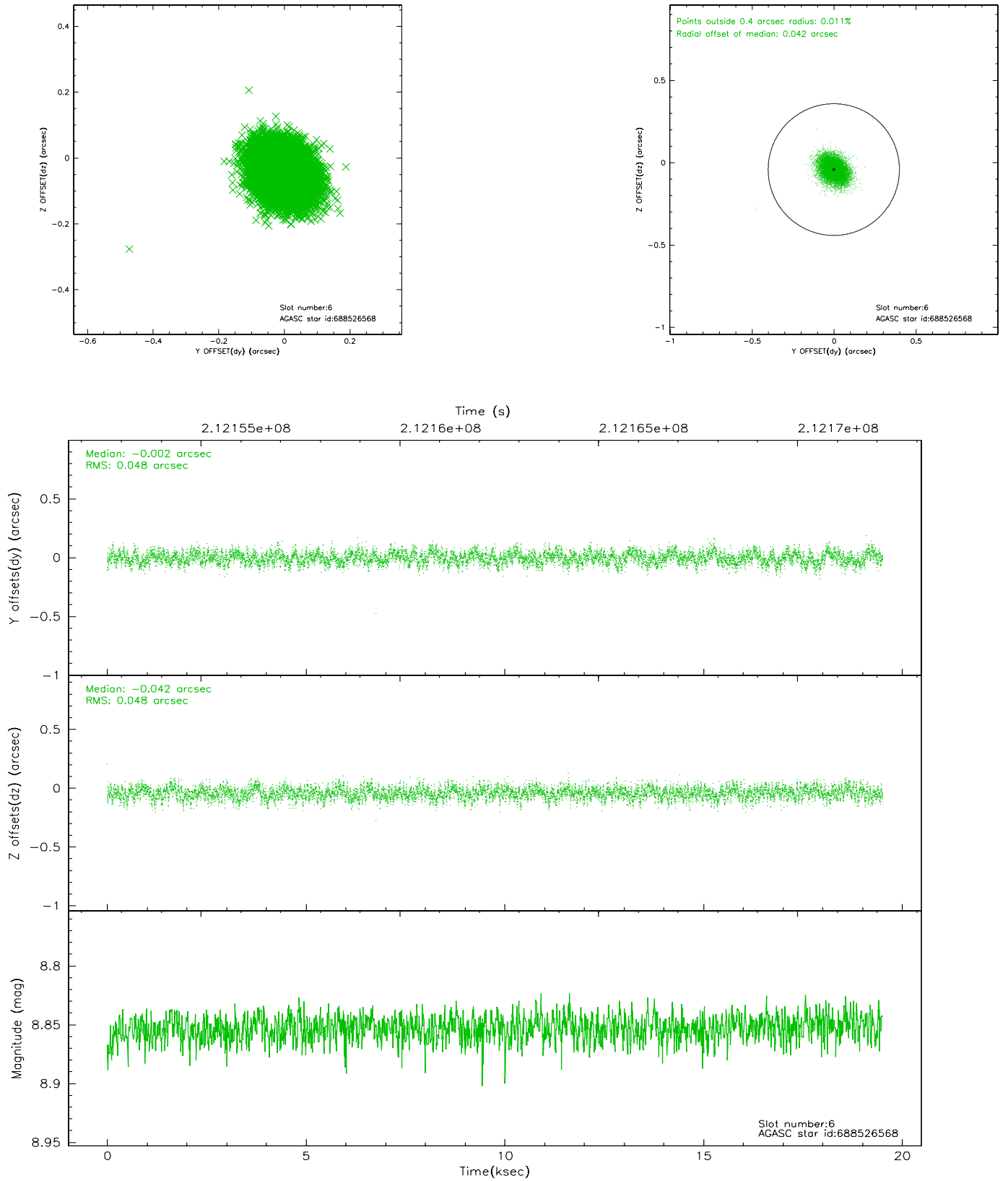
## 2.4.2 Slot 4



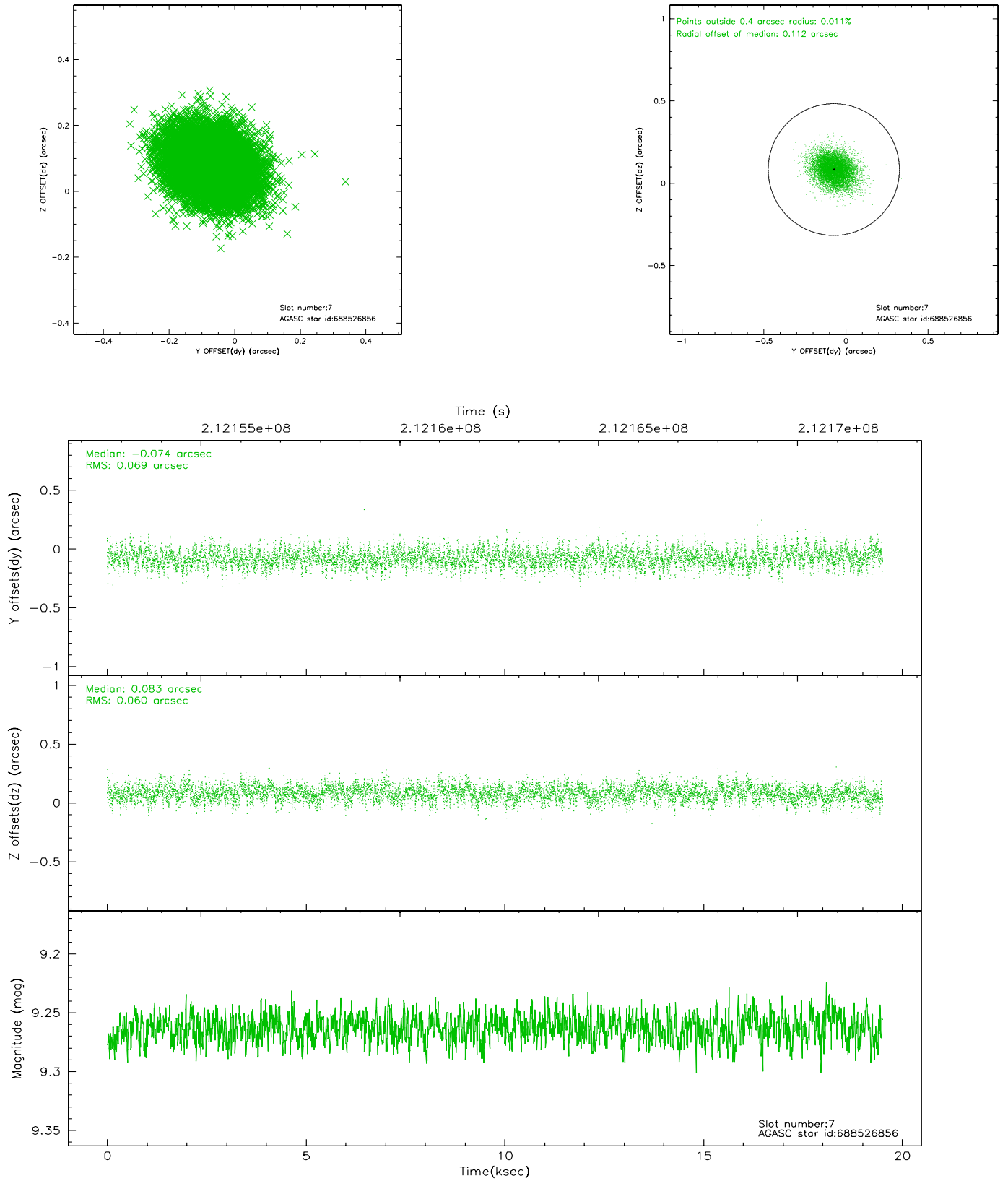
### 2.4.3 Slot 5



## 2.4.4 Slot 6

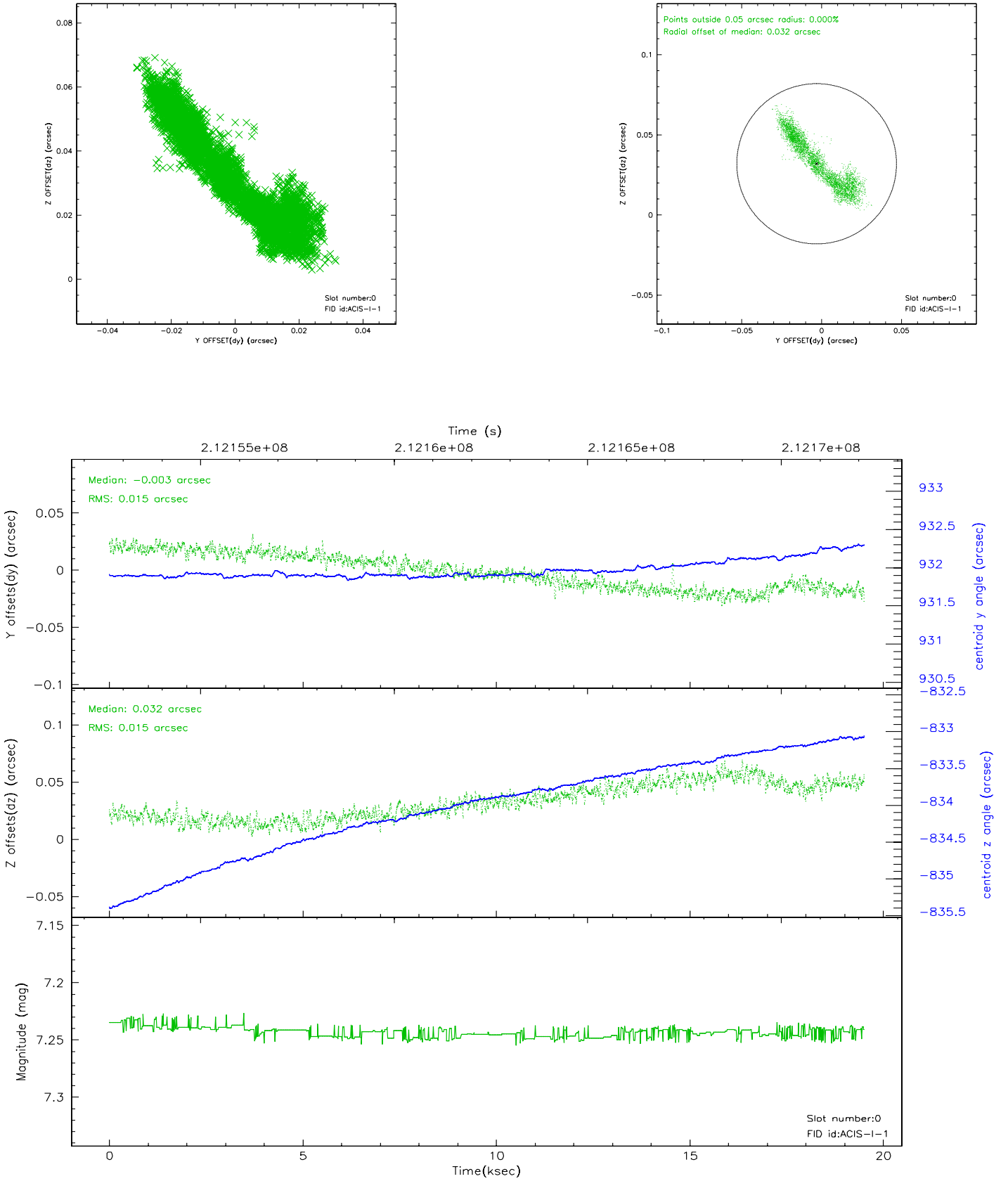


## 2.4.5 Slot 7

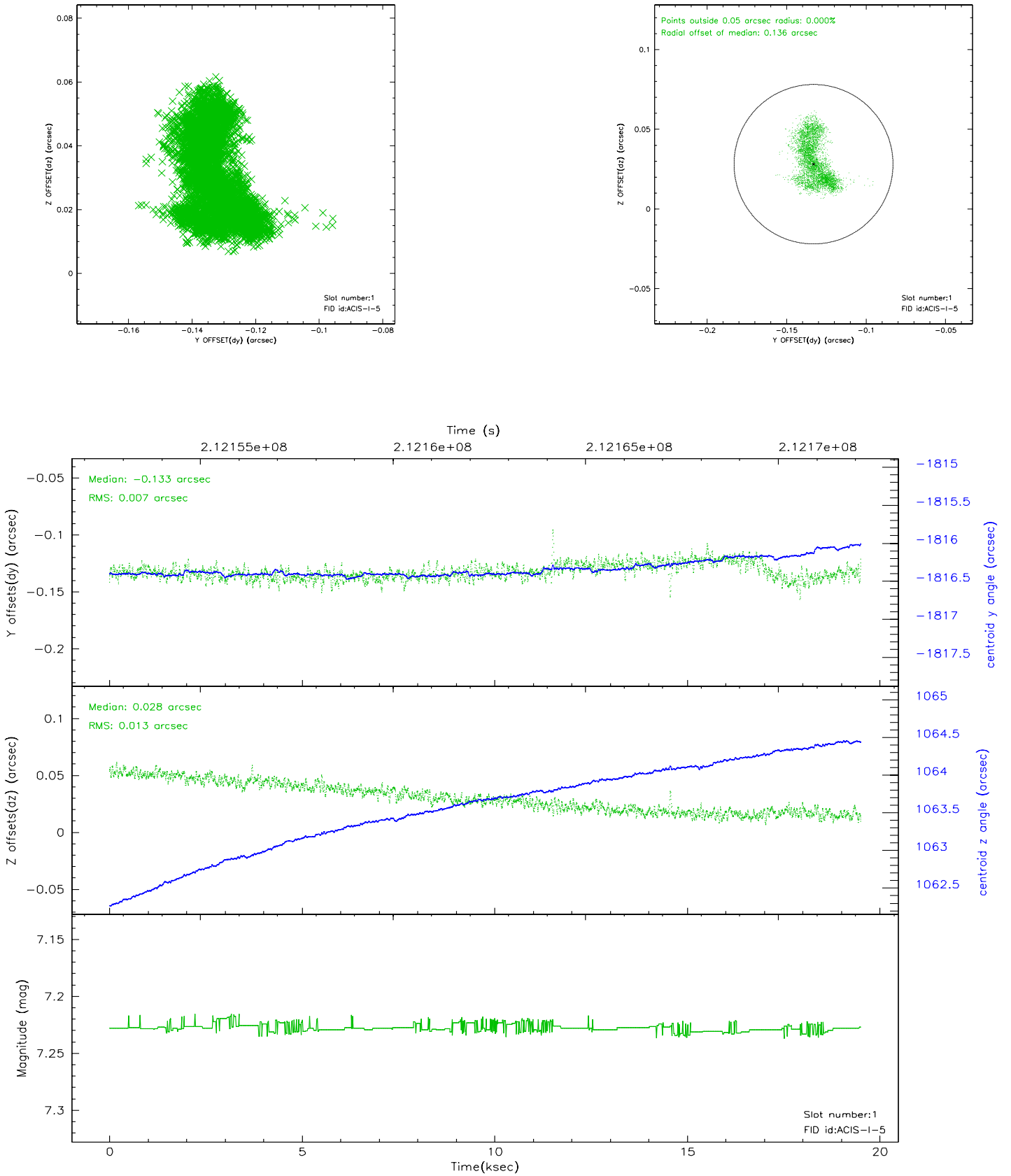


## 2.5 FID Slots

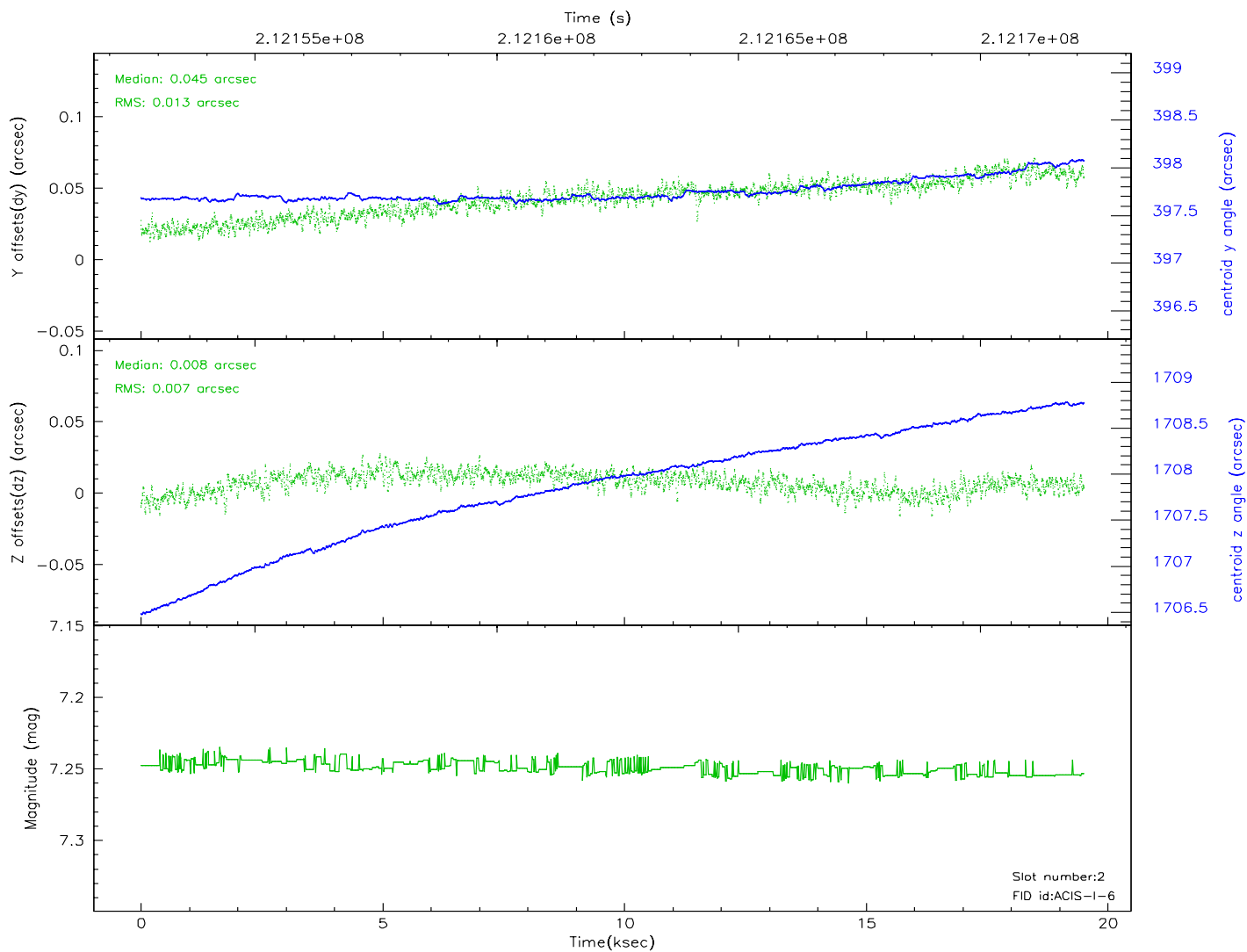
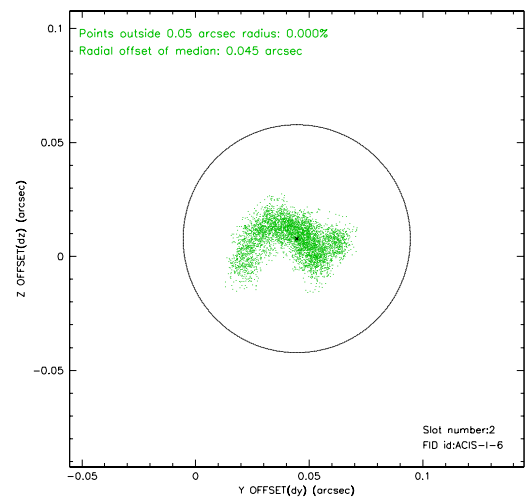
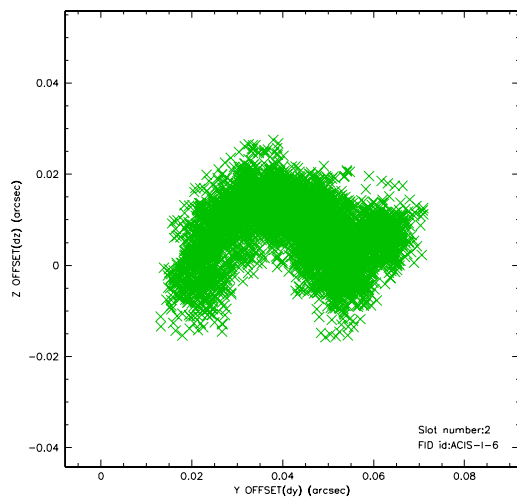
### 2.5.1 Slot 0



## 2.5.2 Slot 1

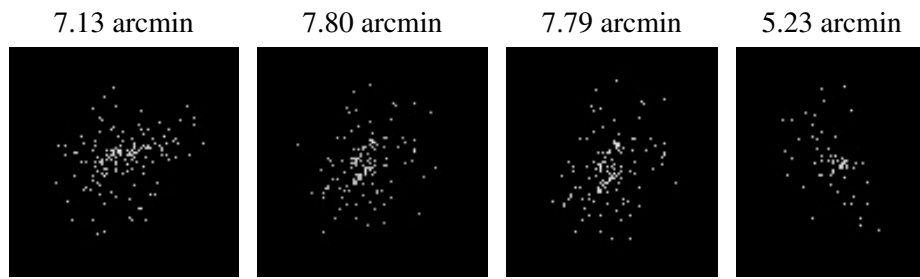


### 2.5.3 Slot 2





### 3 Point Sources



## A Summary

### A.1 Status

V&V Scientist	Jen Lauer
V&V Date (YYYY-MM-DD)	2006.04.19
V&V Edition	1
V&V Disposition and Status	OK
V&V Charge Time	19.508

### A.2 Comments

Monitor constraint met.