

# V&V Reference Report

## L2 ASCDS Version : 8.5

Observation 5365 - L2 Version 3  
Chandra X-Ray Center

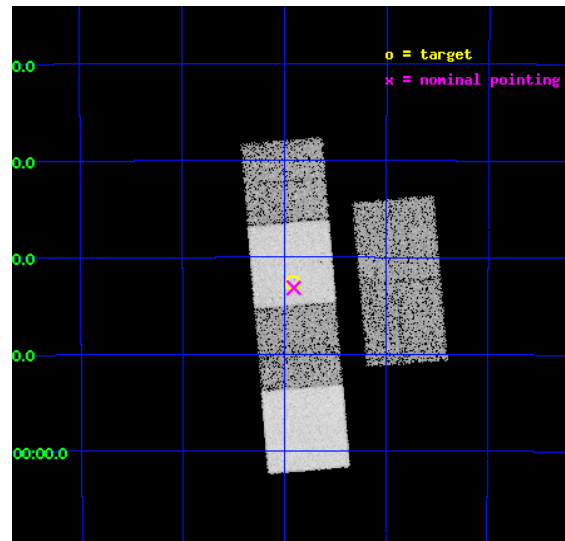
L2 Processing Date : Dec 7 2012

## Contents

<b>1</b>	<b>Front</b>	<b>2</b>
<b>2</b>	<b>OBI</b>	<b>3</b>
2.1	OBI . . . . .	3
2.1.1	Images . . . . .	3
2.1.2	Bias . . . . .	3
2.1.3	Parameters . . . . .	4
2.1.4	Events . . . . .	4
2.2	Compared Parameters . . . . .	5
2.3	Aspect . . . . .	6
2.4	Star Slots . . . . .	9
2.4.1	Slot 3 . . . . .	9
2.4.2	Slot 4 . . . . .	10
2.4.3	Slot 5 . . . . .	11
2.4.4	Slot 6 . . . . .	12
2.4.5	Slot 7 . . . . .	13
2.5	FID Slots . . . . .	14
2.5.1	Slot 0 . . . . .	14
2.5.2	Slot 1 . . . . .	15
2.5.3	Slot 2 . . . . .	16
<b>A</b>	<b>Summary</b>	<b>17</b>
A.1	Status . . . . .	17
A.2	Comments . . . . .	17

# 1 Front

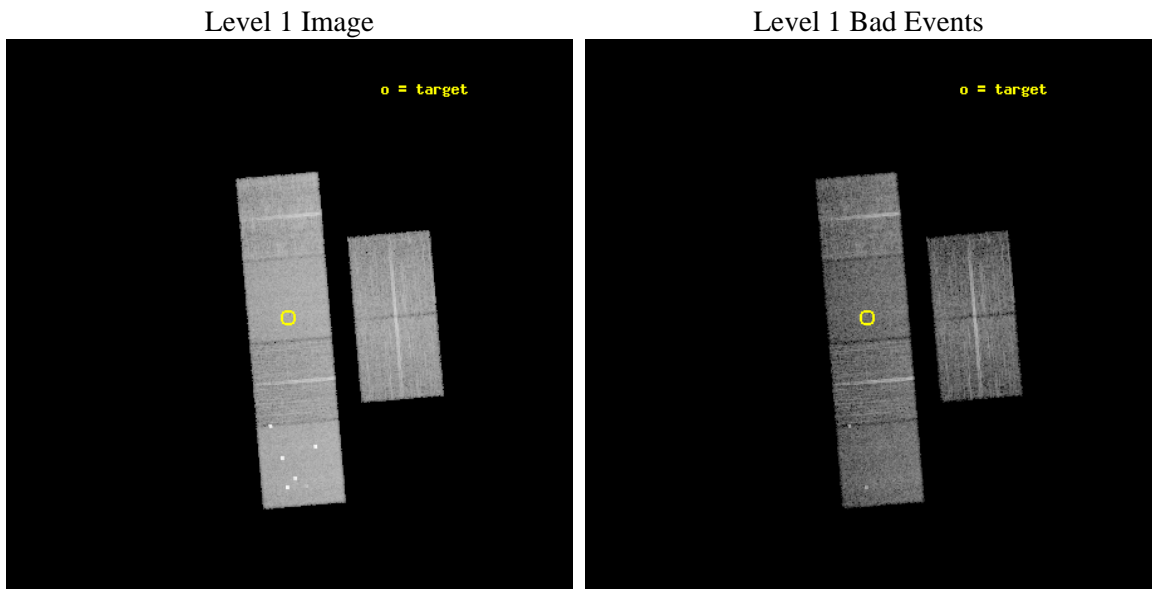
seq_num	500508	Sequence number
obs_id	5365	Observation id
title	Observations of an extremely X-ray rich GRB detected by Integral	P
observer	Dr. CHRYSSA KOUVELIOTOU	Principal investigator
object	GRB 040812	Source name
dtcycle	0	&#160
cycle	P	events from which exps? Prim/Second/Both
ra_targ	246.48	Observer's specified target RA [deg]
dec_targ	-44.71	Observer's specified target Dec [deg]
ra_nom	246.47646383907	Nominal RA [deg]
dec_nom	-44.719378492775	Nominal Dec [deg]
roll_nom	265.1558264727	Nominal Roll [deg]
revision	3	Processing version of data
ontime	10163.199962139	Sum of GTIs [s]
livetime	10034.507404674	Livetime [s]
ontime2	10163.199962139	Sum of GTIs [s]
ontime3	10163.199962139	Sum of GTIs [s]
ontime5	10163.199962139	Sum of GTIs [s]
ontime6	10163.199962139	Sum of GTIs [s]
ontime7	10163.199962139	Sum of GTIs [s]
ontime8	10163.199962139	Sum of GTIs [s]
l2events	122797	Number of level 2 events



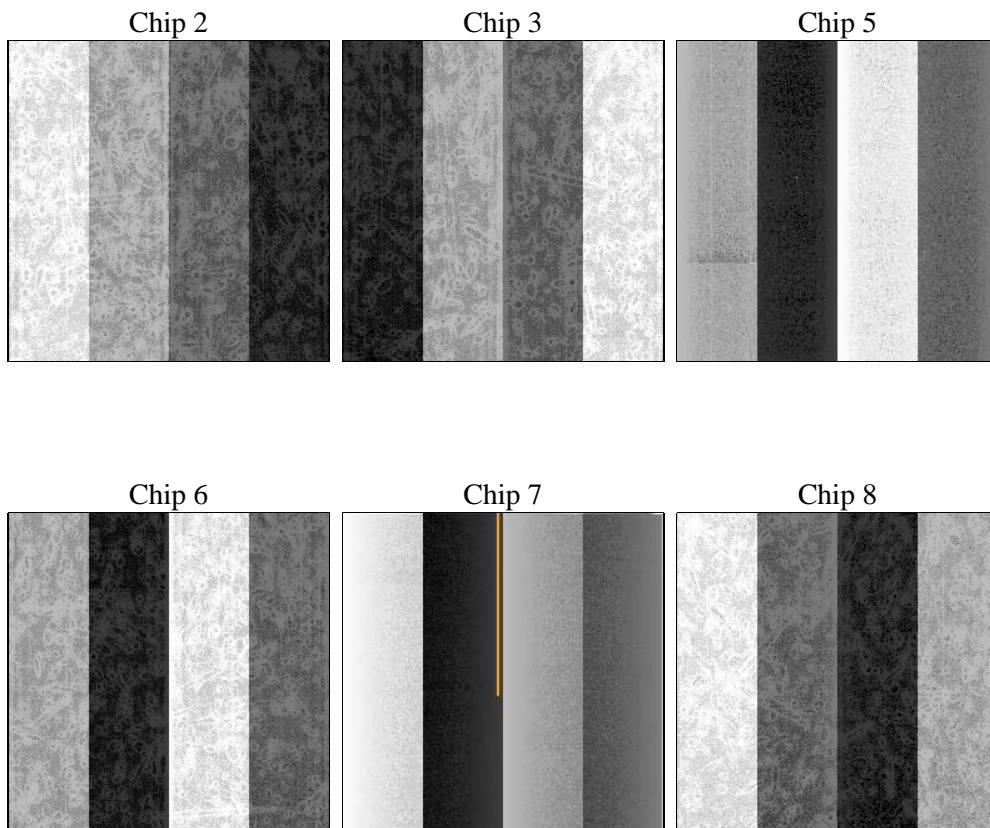
## 2 OBI

### 2.1 OBI

#### 2.1.1 Images



#### 2.1.2 Bias



### 2.1.3 Parameters

obi_num	0	Obi number	sched_exp_time	10000.000000	[s] Scheduled observation exposure time
ascdsver	8.5	Processing system revision	ontime	10163.199962139	Sum of GTIs [s]
caldsver	4.5.4	&#160	ontime2	10163.199962139	Sum of GTIs [s]
date	2012-12-07T17:57:30	Date and time of file creation	ontime3	10163.199962139	Sum of GTIs [s]
revision	3	Processing version of data	ontime5	10163.199962139	Sum of GTIs [s]
			ontime6	10163.199962139	Sum of GTIs [s]
			ontime7	10163.199962139	Sum of GTIs [s]
			ontime8	10163.199962139	Sum of GTIs [s]
			l1events	545308	Number of level 1 events

### 2.1.4 Events

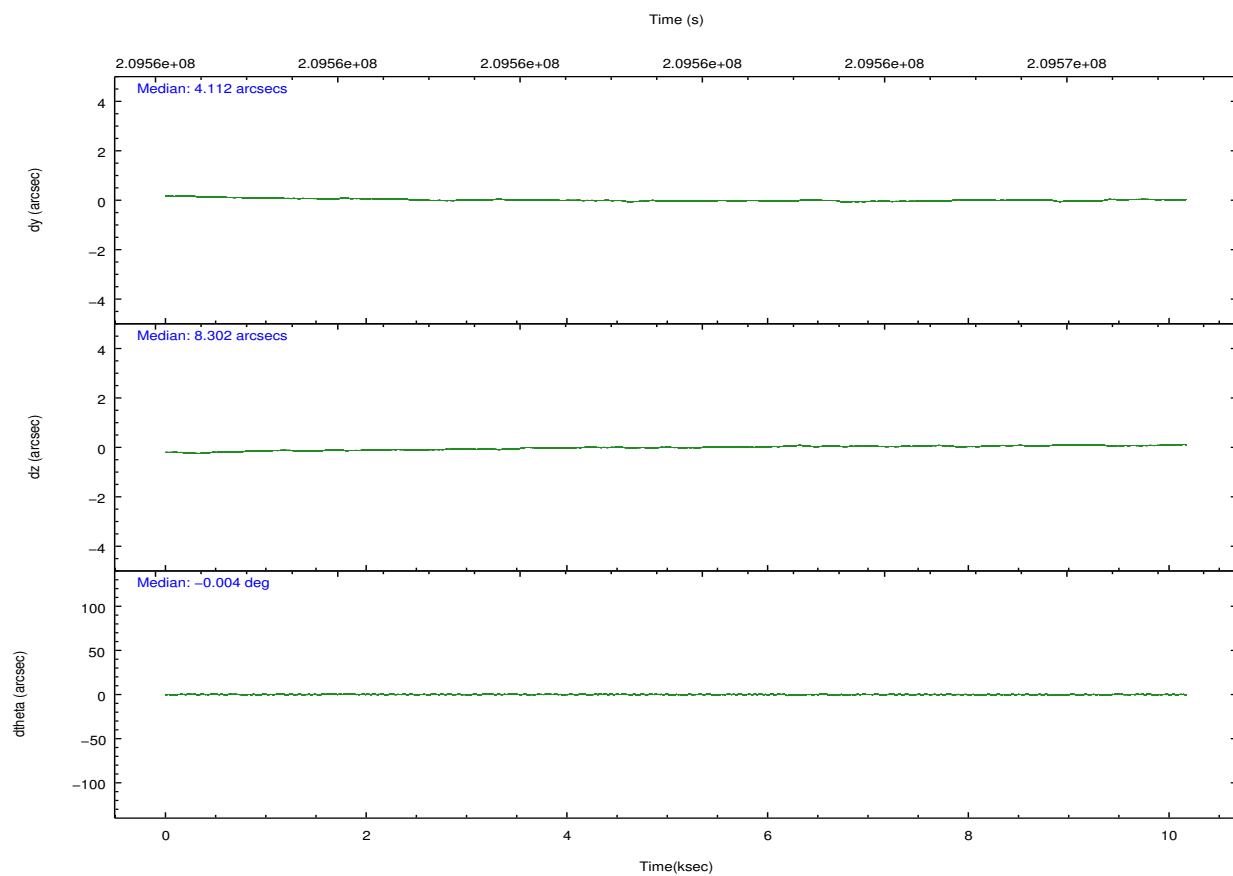
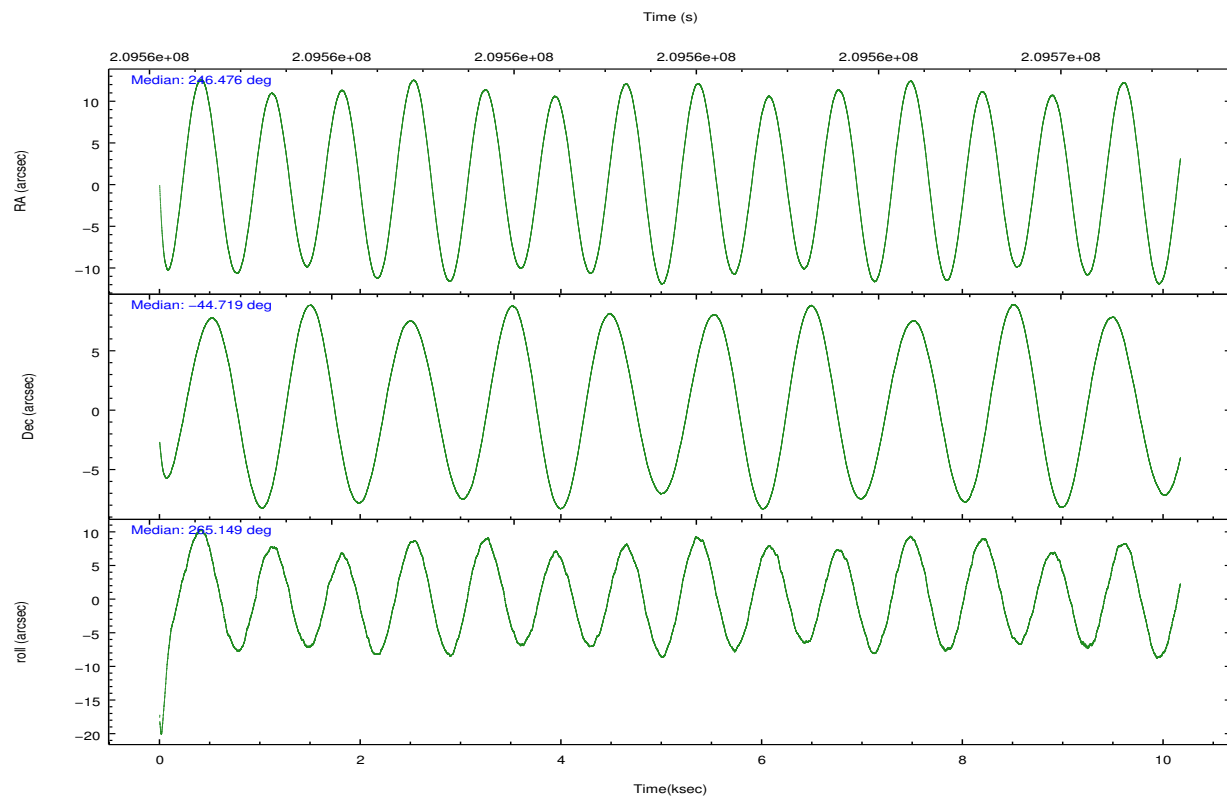
	ccd 2	ccd 3	ccd 5	ccd 6	ccd 7	ccd 8		ccd 2	ccd 3	ccd 5	ccd 6	ccd 7	ccd 8
level 1 events	75996	71967	123648	76171	101595	95931	grade 0 events	4024	4084	12988	3918	3946	6528
rejected events	67118	62901	61397	67027	59132	75604		5%	5%	10%	5%	3%	6%
rejected %	88%	87%	49%	87%	58%	78%	grade 1 events	39	52	607	37	102	65
								0%	0%	0%	0%	0%	0%
							grade 2 events	1824	1732	17011	1853	8519	4479
								2%	2%	13%	2%	8%	4%
							grade 3 events	805	845	2573	826	3735	2128
								1%	1%	2%	1%	3%	2%
							grade 4 events	778	914	2114	848	3675	1977
								1%	1%	1%	1%	3%	2%
							grade 5 events	2899	3145	8264	3464	9672	4468
								3%	4%	6%	4%	9%	4%
							grade 6 events	1475	1517	27714	1726	22707	5261
								1%	2%	22%	2%	22%	5%
							grade 7 events	64152	59678	52377	63499	49239	71025
								84%	82%	42%	83%	48%	74%



## 2.2 Compared Parameters

Parameter	Planned	Actual	Parameter	Planned	Actual
Instrument	ACIS	ACIS	Obspar format version number	7	7
Detector	ACIS-235678	ACIS-235678	Obspar file type	PREDICTED	ACTUAL
Grating	NONE	NONE	Obspar update status	NONE	UPDATED
Data mode	FAINT	FAINT	Number of optional ACIS chips dropped	0	0
Observation mode	POINTING	POINTING	On-chip summing requested	N	N
[deg] Pointing RA	246.459739	246.4764638390666	Subarray requested	NONE	NONE
[deg] Pointing Dec	-44.694861	-44.71937849277464	Alternating exposures requested	N	N
[deg] Pointing Roll	264.987459	265.1558264726968	[s] Primary exposure time	0.000000	3.2
[mm] SIM focus pos	-0.684267	-0.6828225247311905			
[mm] SIM defocus	0	0.001444936568705701			
[mm] SIM translation stage pos	-190.132523	-190.1400660498719			
[mm] SIM translation stage offset	0	0.00754346686406393			
[s] Observation start time (MET)	209556799.184000	209555724.06516			
Observation start date	2004-08-22T10:12:15	2004-08-22T09:55:24			
[s] Observation end time (MET)	209566799.184000	209567090.80316			
Observation end date	2004-08-22T12:58:55	2004-08-22T13:04:50			
Read mode	TIMED	TIMED			

## 2.3 Aspect

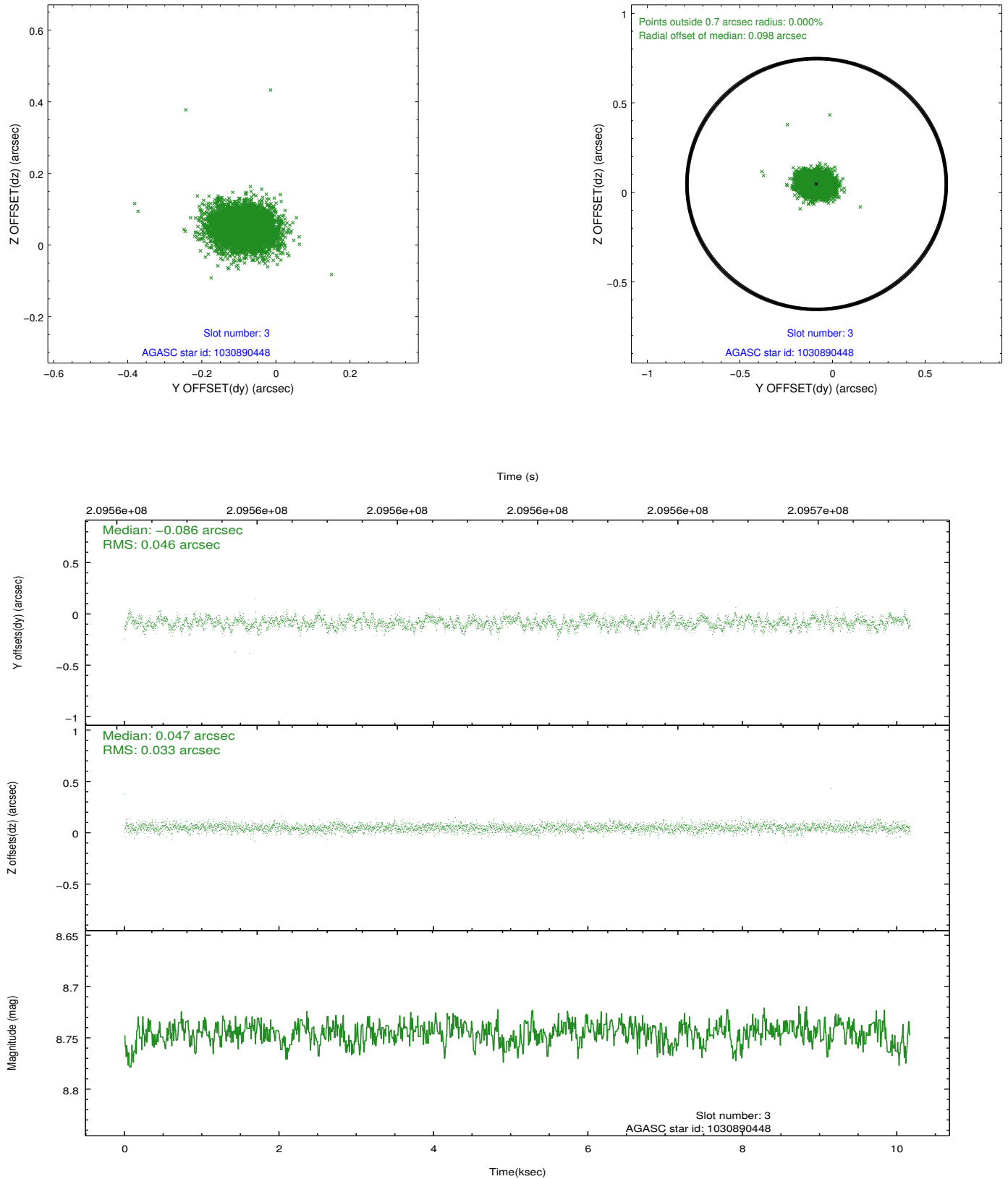


### Slot Statistics

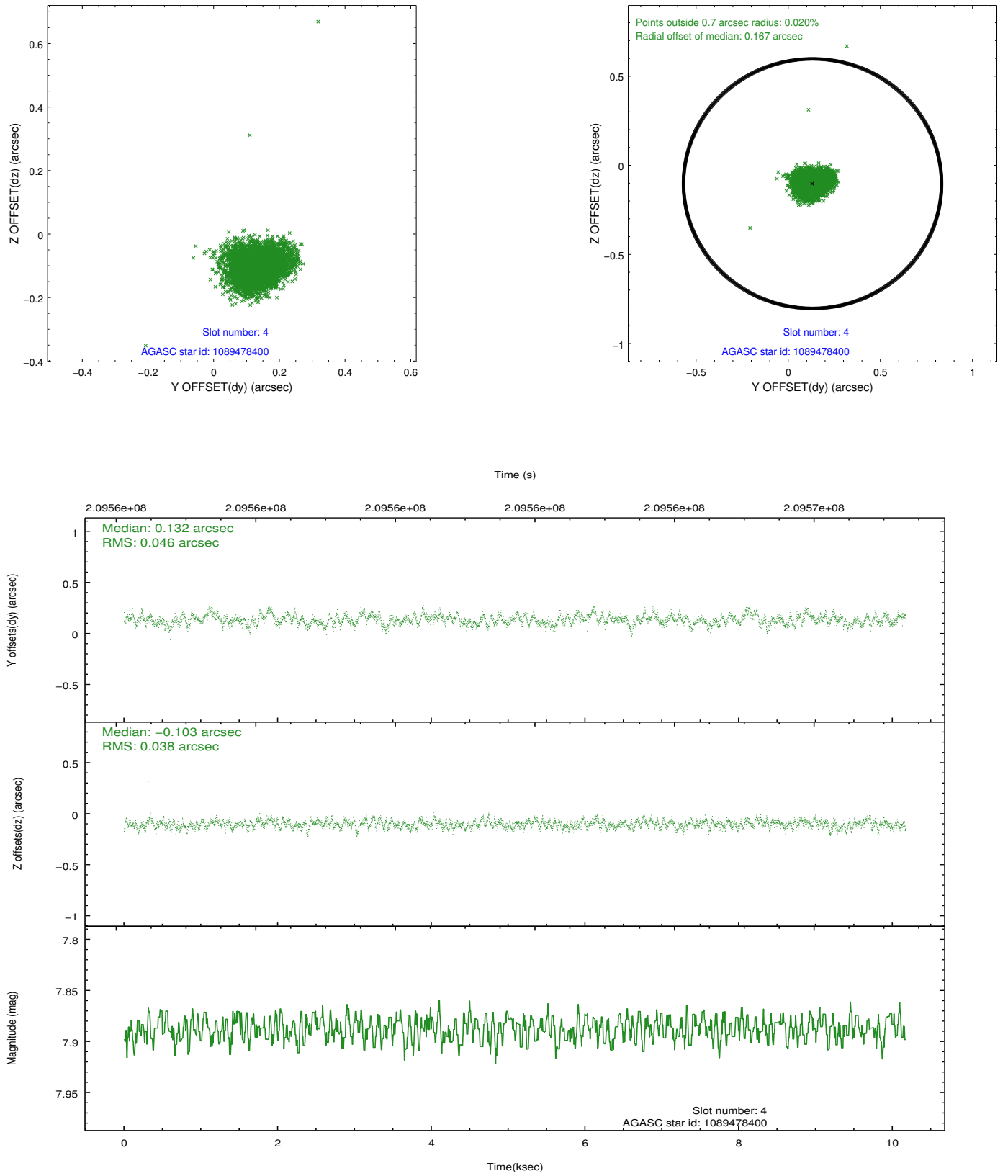
slot	status	id	mag	n_pts	med_dy	med_dz	dr1	dr2	ra	dec	mean_y	mean_z
0	FID	ACIS-S-2	7.11	2481	-0.033	-0.049	0.007	0.011	0.000000	0.000000	-756.85	-1729.52
1	FID	ACIS-S-4	7.20	2481	0.098	0.029	0.005	0.010	0.000000	0.000000	2156.34	178.48
2	FID	ACIS-S-5	7.23	2482	-0.096	0.028	0.007	0.011	0.000000	0.000000	-1809.07	172.77
3	GUIDE	1030890448	8.75	4962	-0.086	0.047	0.060	0.098	246.960720	-44.309948	-1489.34	1164.78
4	GUIDE	1089478400	7.89	4963	0.132	-0.103	0.062	0.102	246.169044	-45.180500	1807.39	-581.65
5	GUIDE	1089481136	8.07	4962	0.056	0.038	0.069	0.108	247.200676	-45.033759	1059.56	1985.18
6	GUIDE	1030898272	7.20	4961	-0.077	0.018	0.071	0.108	247.207863	-44.812617	264.13	1941.55
7	GUIDE	1089502312	6.73	4962	-0.027	0.006	0.062	0.101	246.225648	-45.349496	2400.51	-383.26

## 2.4 Star Slots

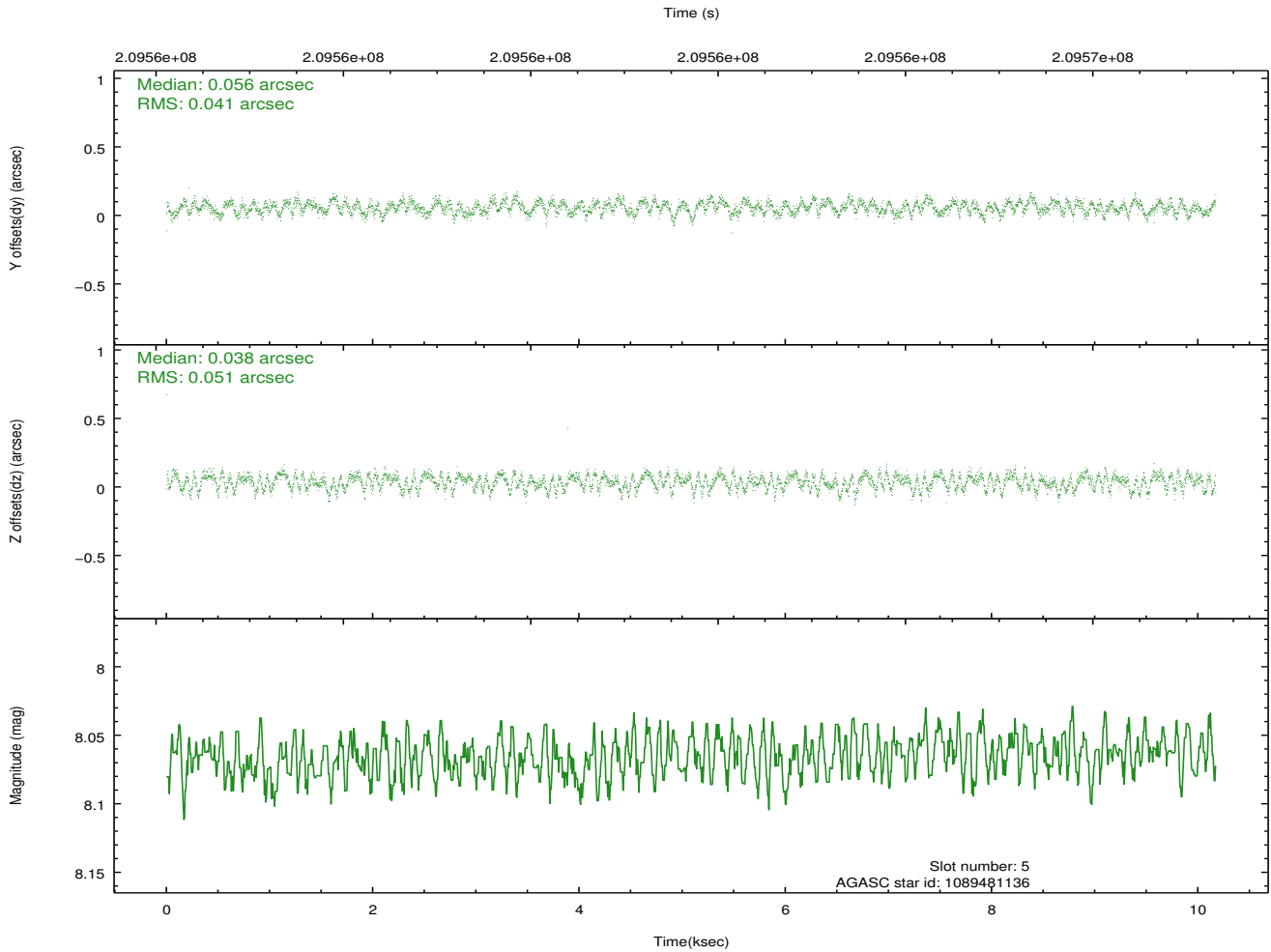
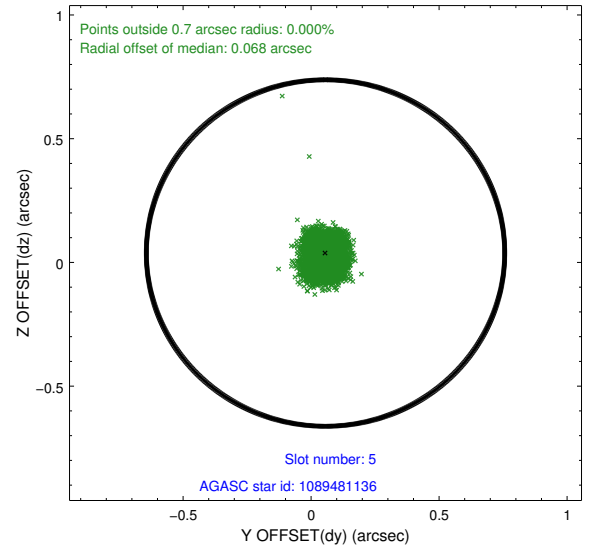
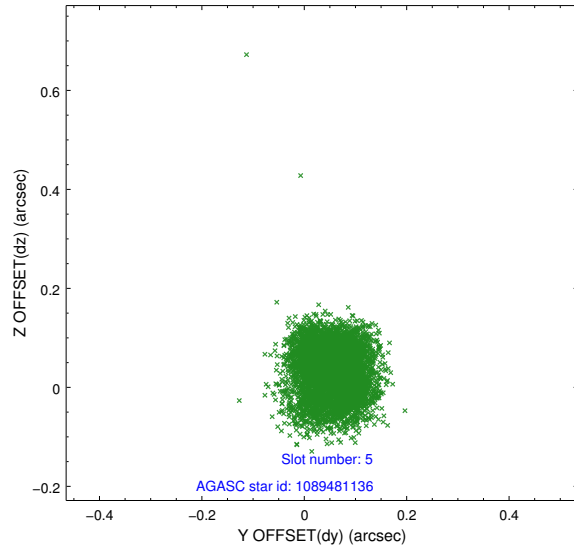
### 2.4.1 Slot 3



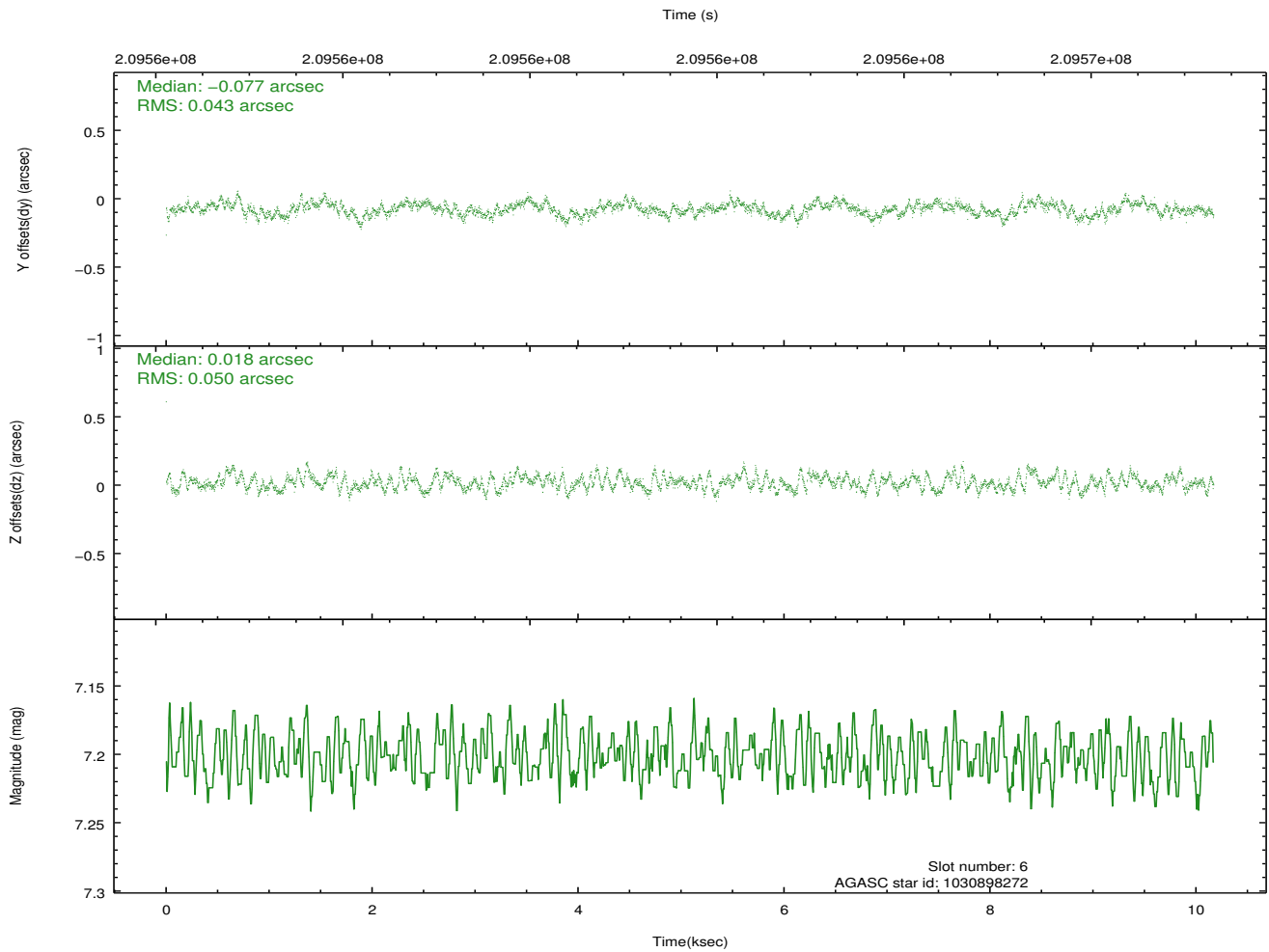
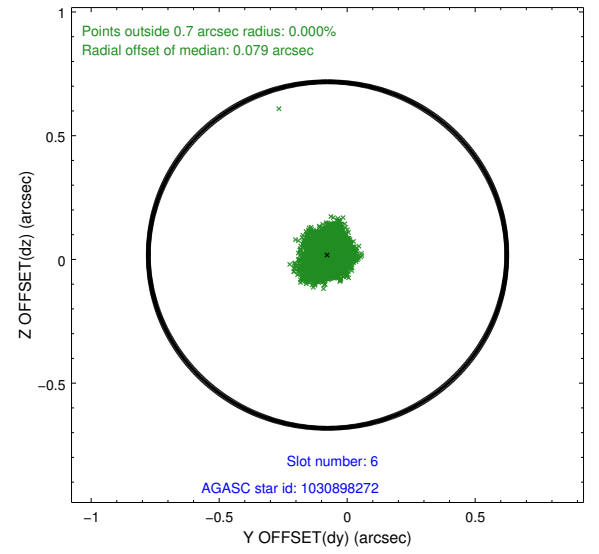
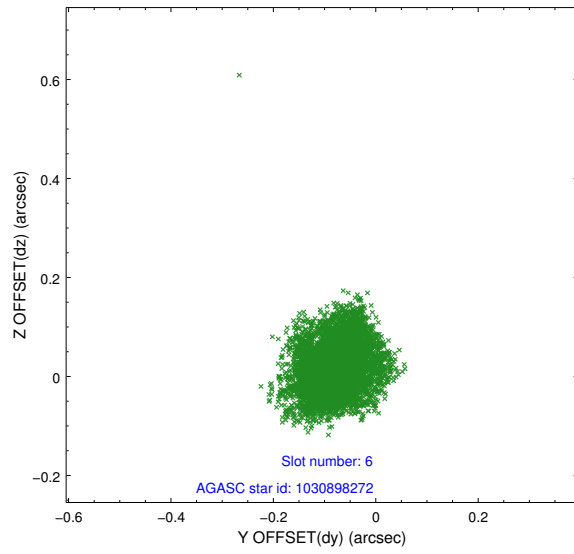
## 2.4.2 Slot 4



### 2.4.3 Slot 5

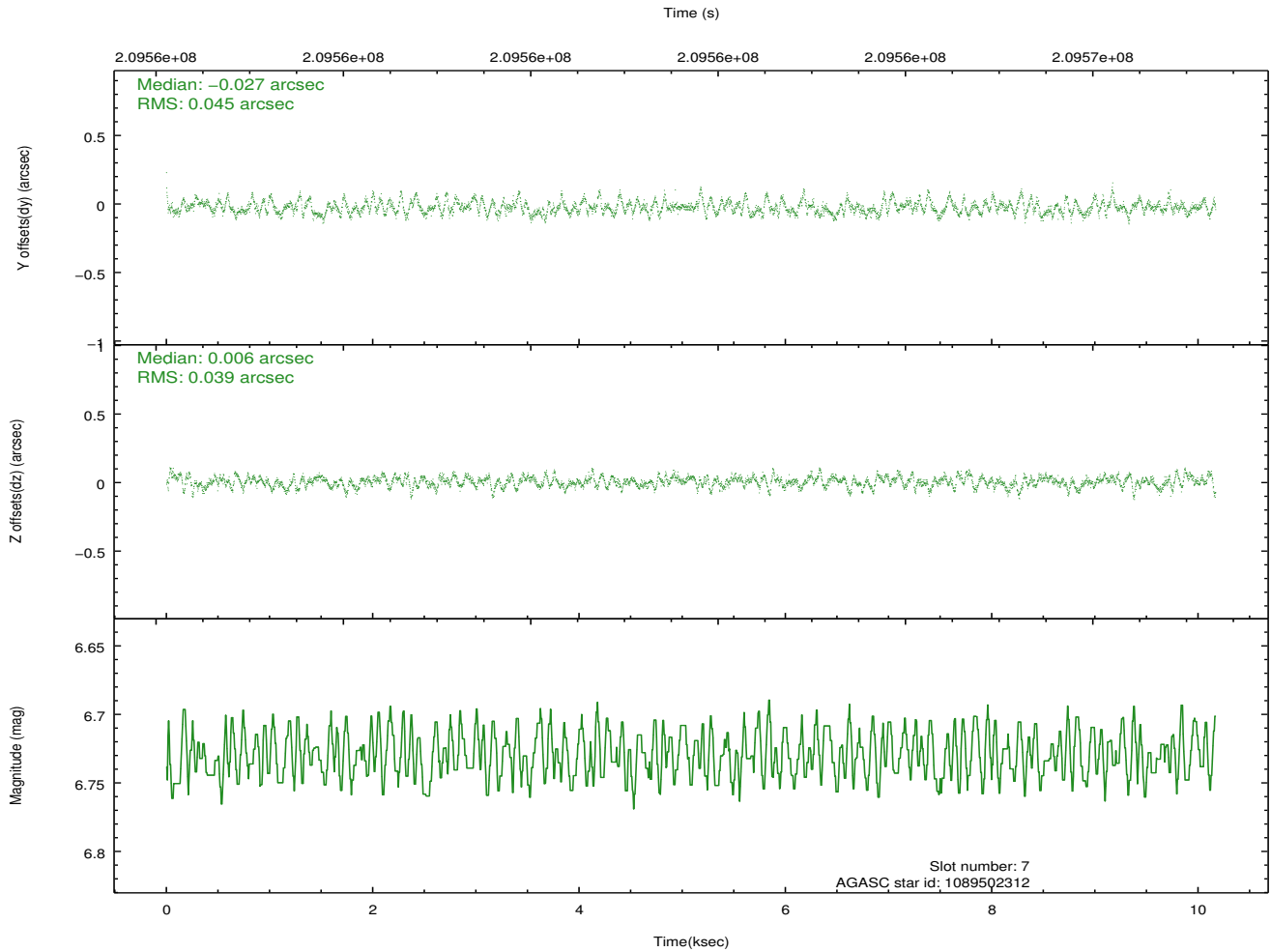
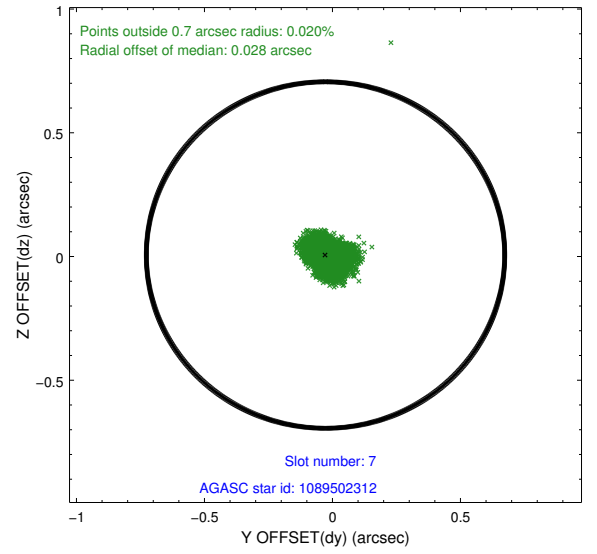
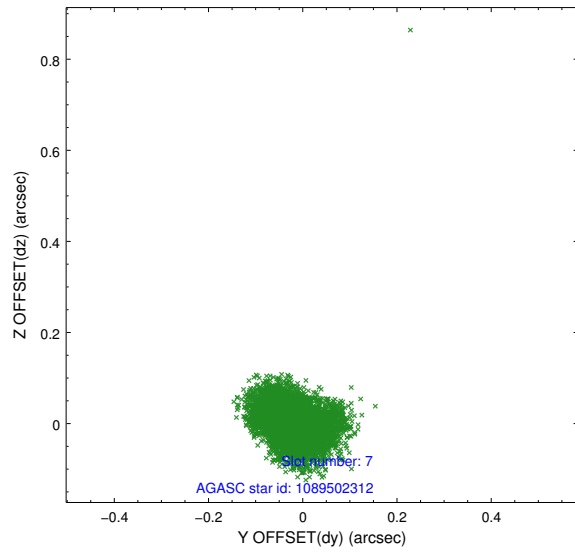


## 2.4.4 Slot 6



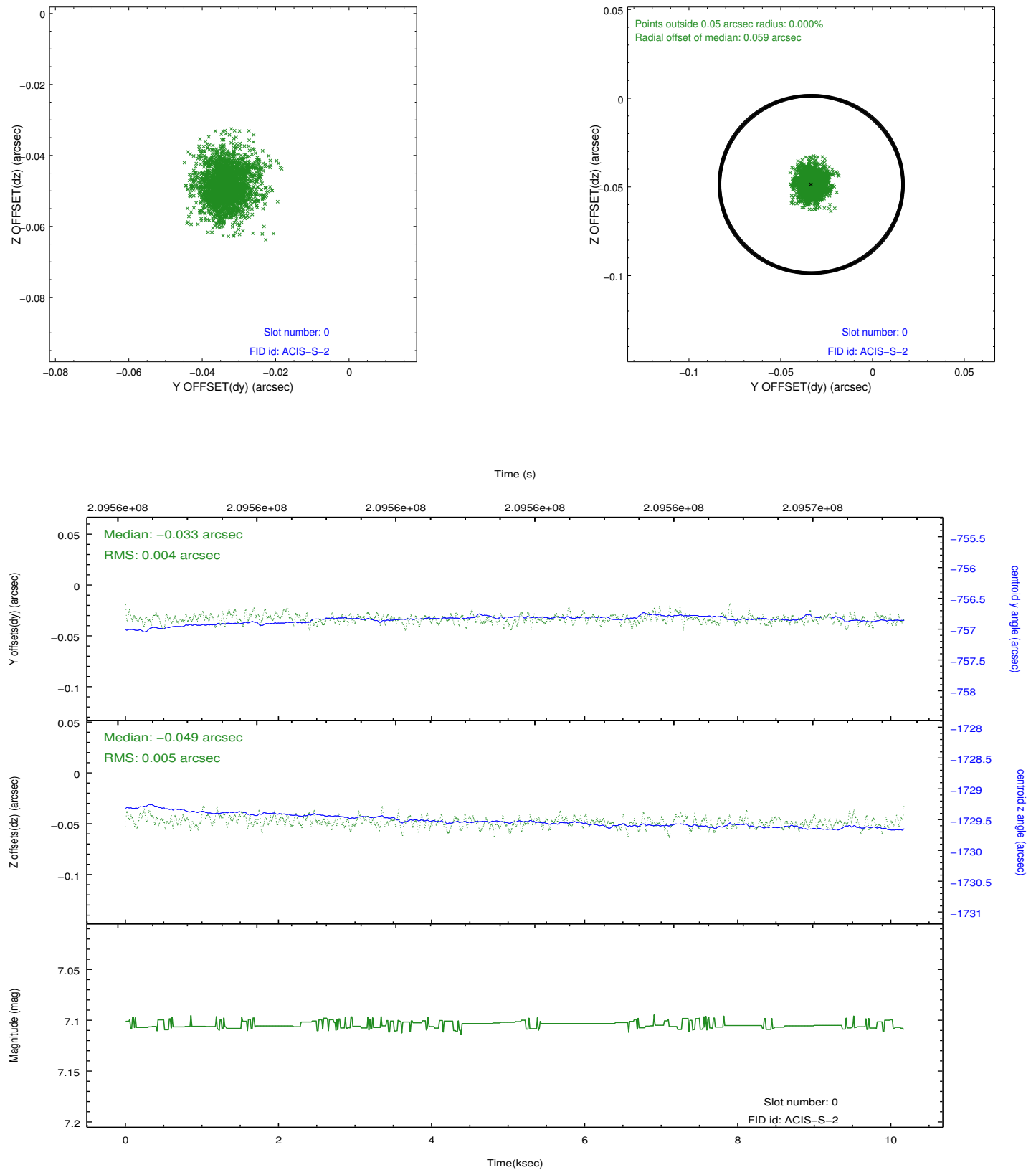


## 2.4.5 Slot 7

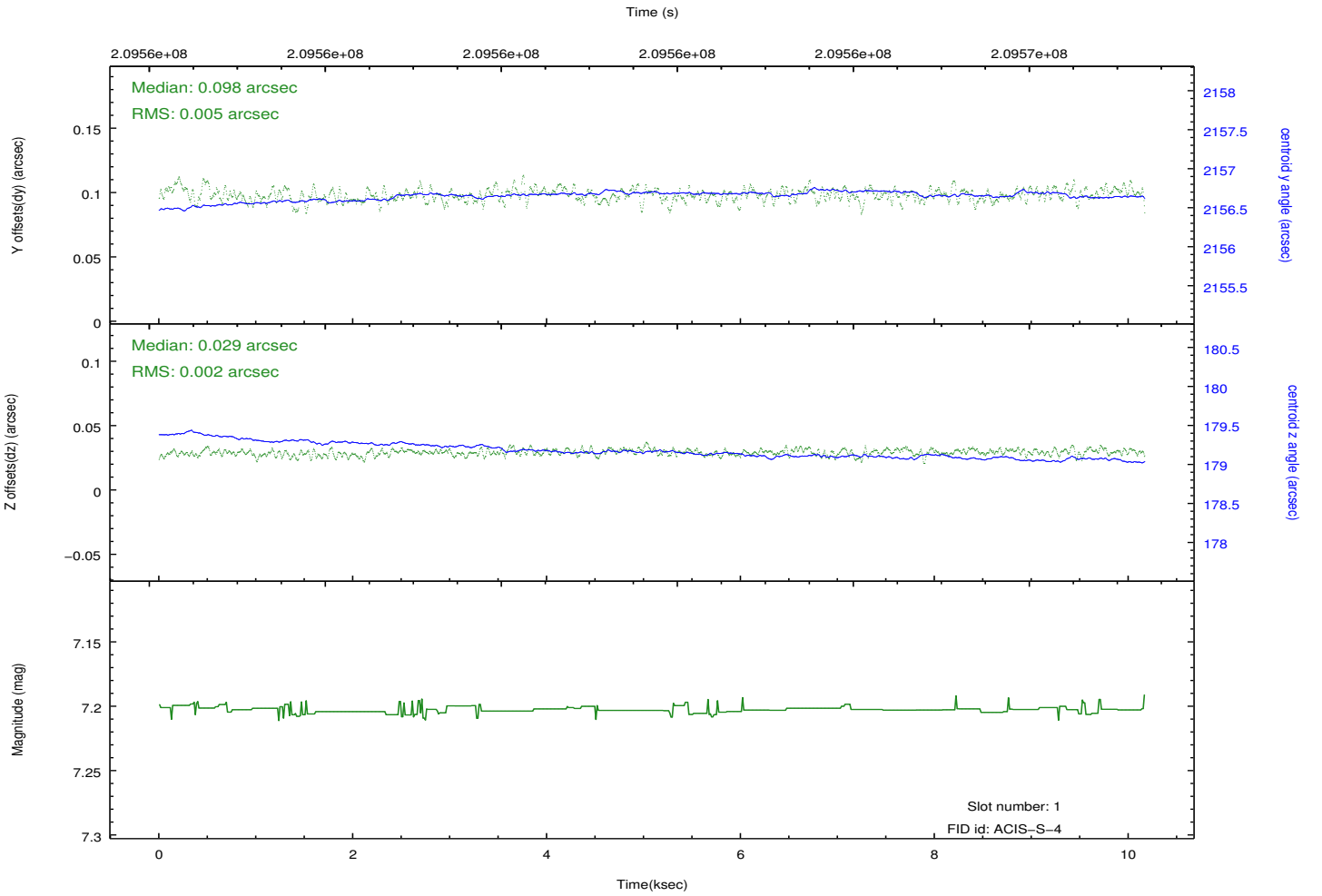
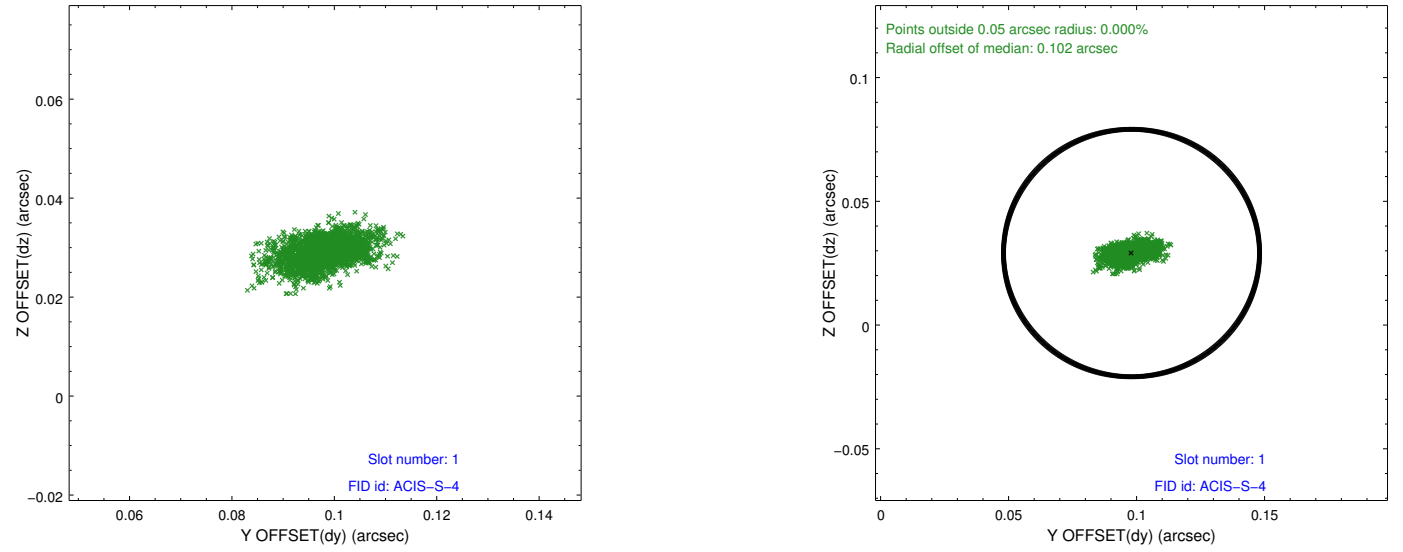


## 2.5 FID Slots

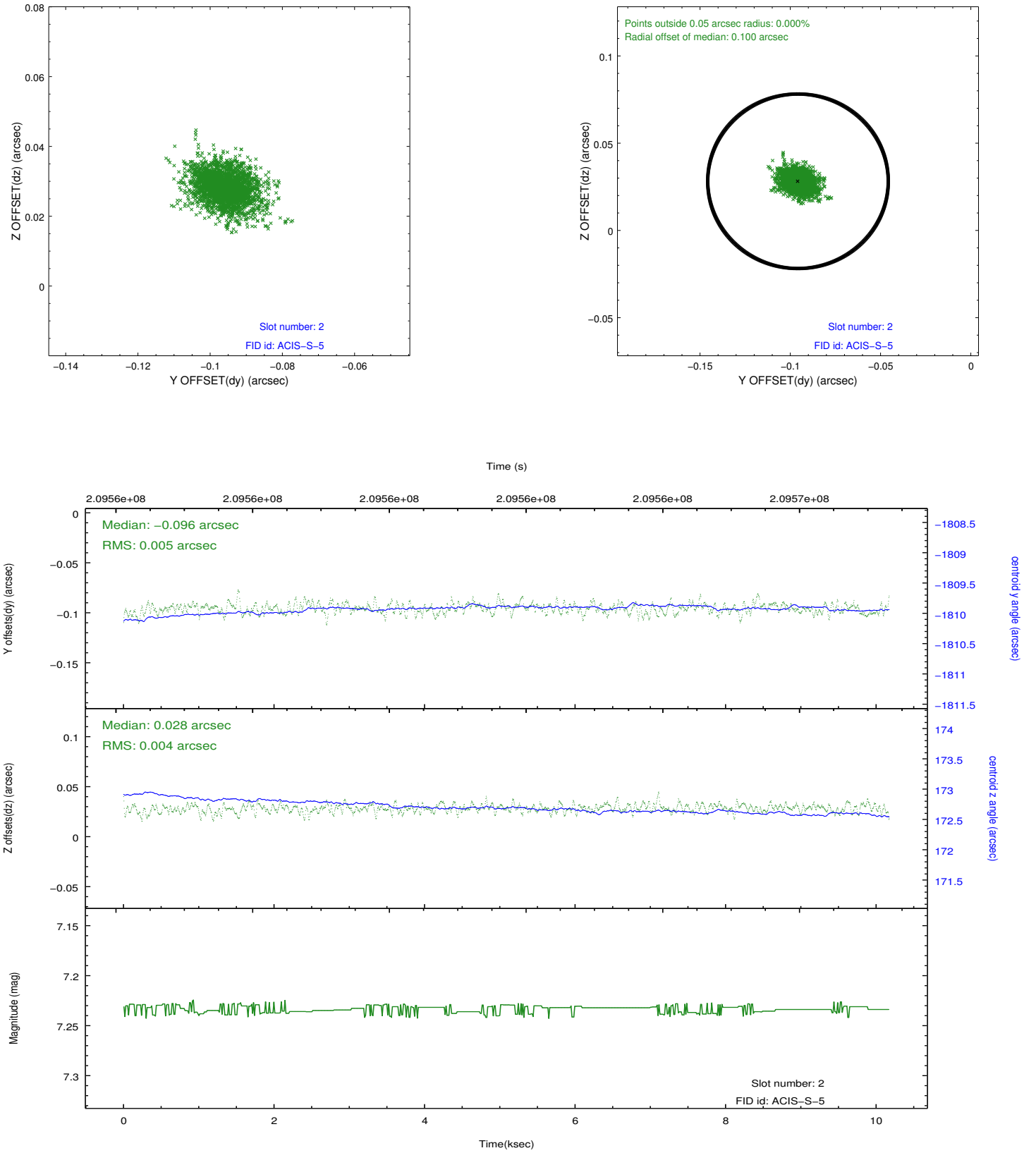
### 2.5.1 Slot 0



## 2.5.2 Slot 1



### 2.5.3 Slot 2



## A Summary

### A.1 Status

V&V Scientist	Jen Lauer
V&V Date (YYYY-MM-DD)	2012.12.21
V&V Edition	1
V&V Disposition and Status	OK
V&V Charge Time	10.163

### A.2 Comments