

V&V Reference Report

L2 ASCDS Version : 8.5

Observation 5364 - L2 Version 3
Chandra X-Ray Center

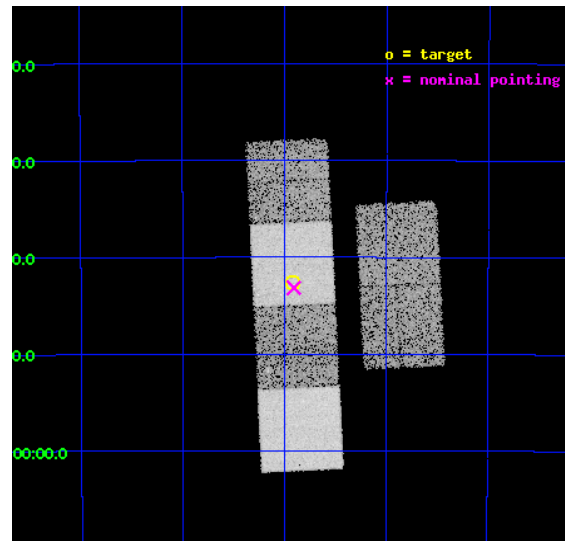
L2 Processing Date : Dec 7 2012

Contents

1	Front	2
2	OBI	3
2.1	OBI	3
2.1.1	Images	3
2.1.2	Bias	3
2.1.3	Parameters	4
2.1.4	Events	4
2.2	Compared Parameters	5
2.3	Aspect	6
2.4	Star Slots	9
2.4.1	Slot 3	9
2.4.2	Slot 4	10
2.4.3	Slot 5	11
2.4.4	Slot 6	12
2.4.5	Slot 7	13
2.5	FID Slots	14
2.5.1	Slot 0	14
2.5.2	Slot 1	15
2.5.3	Slot 2	16
A	Summary	17
A.1	Status	17
A.2	Comments	17

1 Front

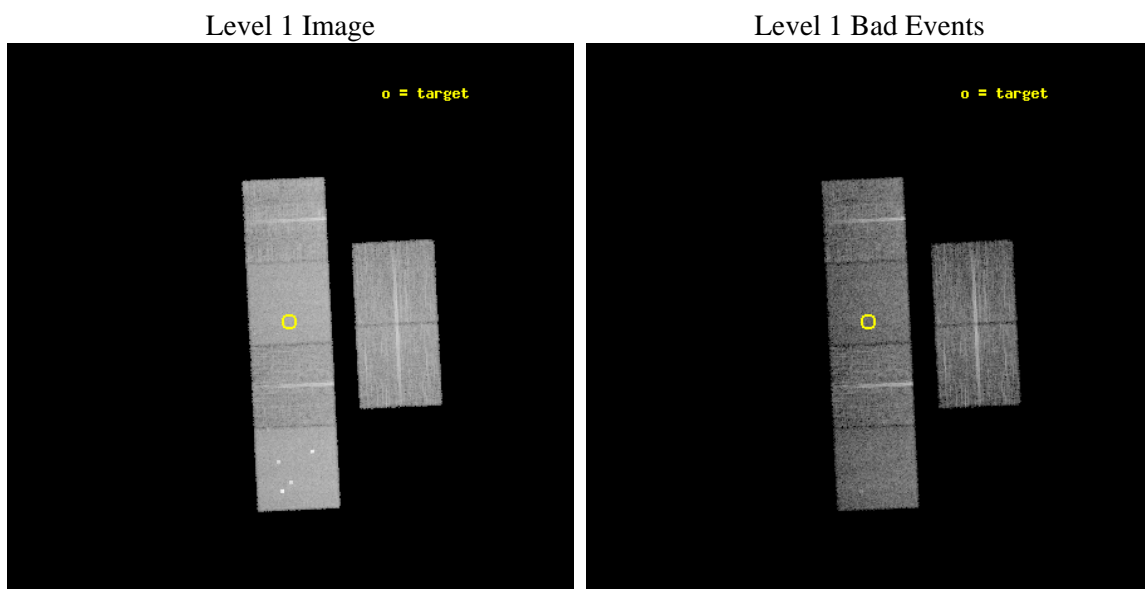
seq_num	500507	Sequence number
obs_id	5364	Observation id
title	Observations of an extremely X-ray rich GRB detected by Integral	P
observer	Dr. CHRYSSA KOUVELIOTOU	Principal investigator
object	GRB 040812	Source name
dtcycle	0	
cycle	P	events from which exps? Prim/Second/Both
ra_targ	246.48	Observer's specified target RA [deg]
dec_targ	-44.71	Observer's specified target Dec [deg]
ra_nom	246.47695580392	Nominal RA [deg]
dec_nom	-44.719416648917	Nominal Dec [deg]
roll_nom	267.18815714896	Nominal Roll [deg]
revision	3	Processing version of data
ontime	10175.999962091	Sum of GTIs [s]
livetime	10047.14532332	Livetime [s]
ontime2	10175.999962091	Sum of GTIs [s]
ontime3	10166.277061075	Sum of GTIs [s]
ontime5	10175.999962091	Sum of GTIs [s]
ontime6	10175.999962091	Sum of GTIs [s]
ontime7	10175.999962091	Sum of GTIs [s]
ontime8	10169.517981619	Sum of GTIs [s]
l2events	119237	Number of level 2 events



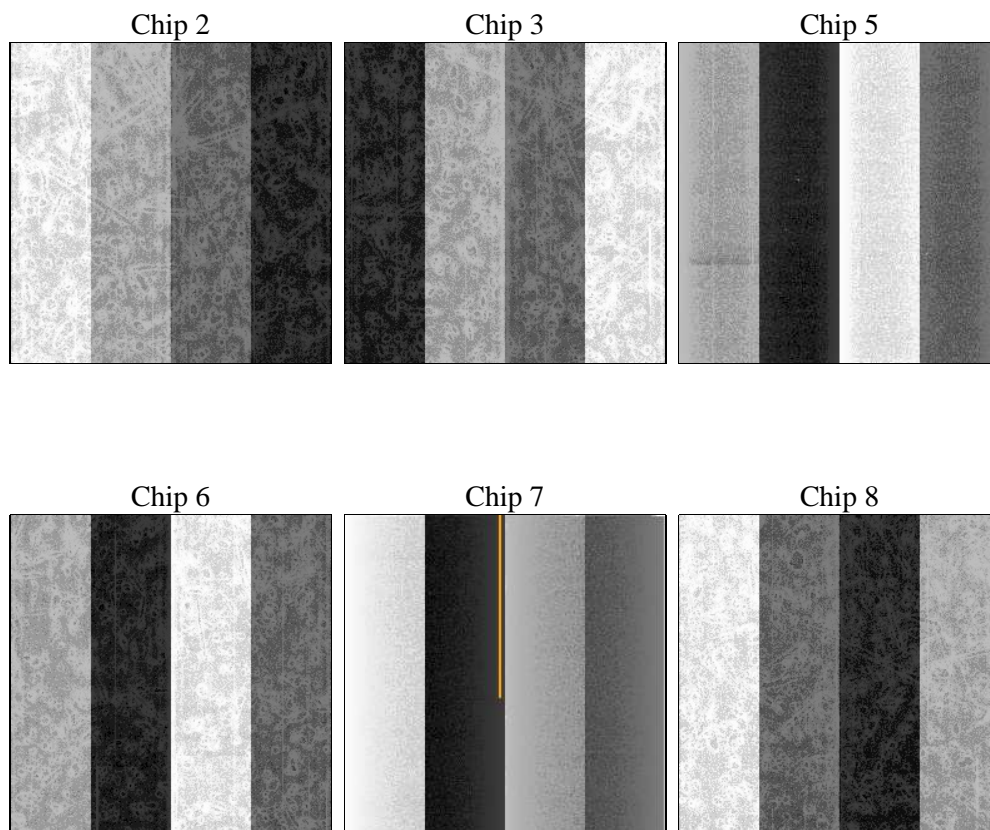
2 OBI

2.1 OBI

2.1.1 Images



2.1.2 Bias



2.1.3 Parameters

obi_num	0	Obi number	sched_exp_time	10000.000000	[s] Scheduled observation exposure time
ascdsver	8.5	Processing system revision	ontime	10175.999962091	Sum of GTIs [s]
caldsver	4.5.4	 	ontime2	10175.999962091	Sum of GTIs [s]
date	2012-12-07T17:30:33	Date and time of file creation	ontime3	10166.277061075	Sum of GTIs [s]
revision	3	Processing version of data	ontime5	10175.999962091	Sum of GTIs [s]
			ontime6	10175.999962091	Sum of GTIs [s]
			ontime7	10175.999962091	Sum of GTIs [s]
			ontime8	10169.517981619	Sum of GTIs [s]
			l1events	553294	Number of level 1 events

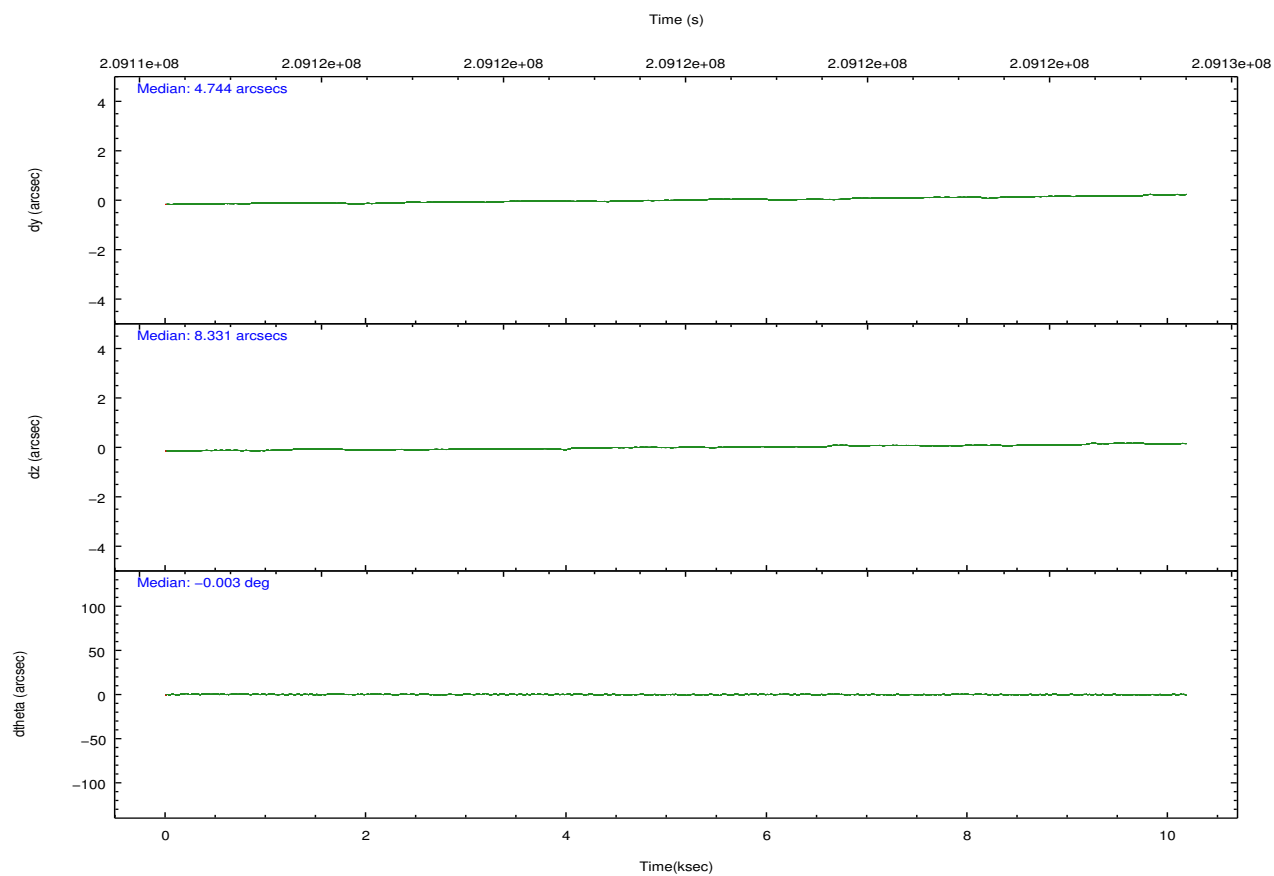
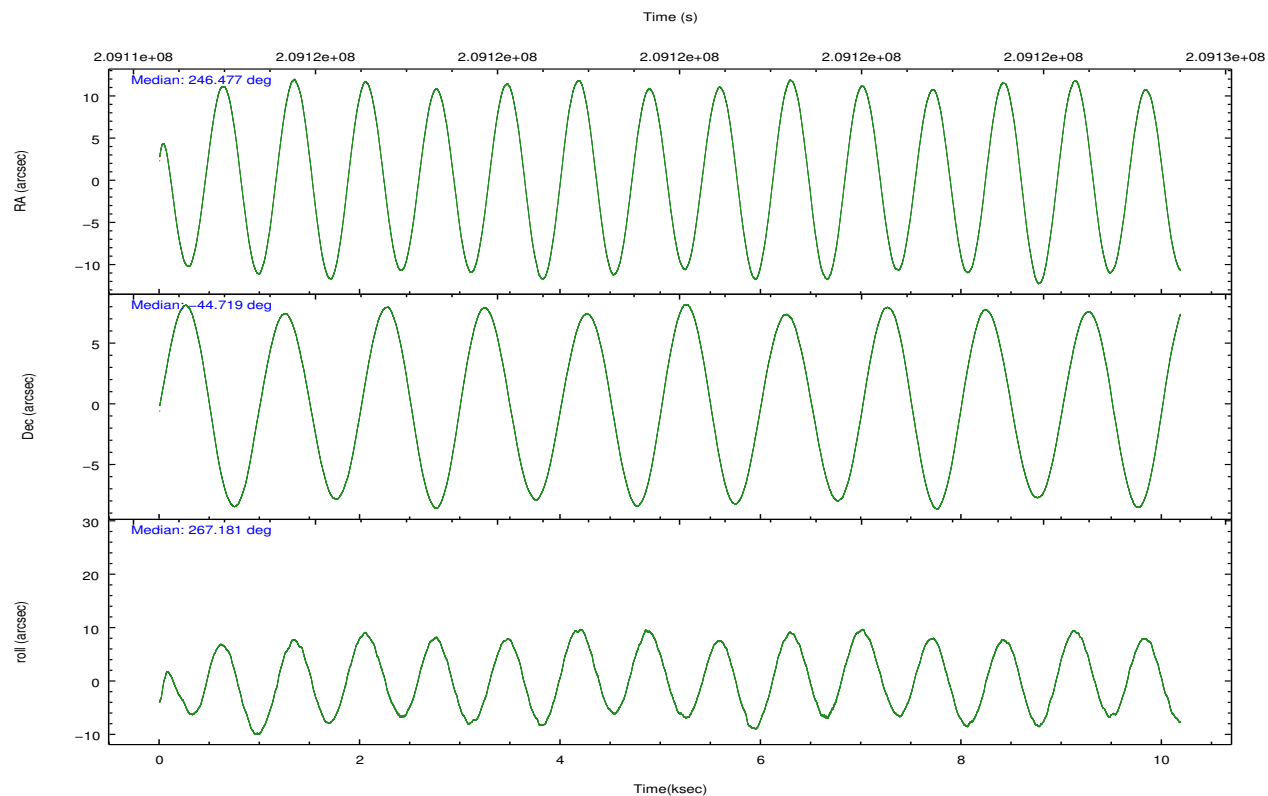
2.1.4 Events

	ccd 2	ccd 3	ccd 5	ccd 6	ccd 7	ccd 8		ccd 2	ccd 3	ccd 5	ccd 6	ccd 7	ccd 8
level 1 events	81225	76766	117898	76474	104884	96047	grade 0 events	4207	4195	8480	3793	3877	6766
rejected events	72185	67929	63434	67500	63652	76071		5%	5%	7%	4%	3%	7%
rejected %	88%	88%	53%	88%	60%	79%	grade 1 events	46	29	245	35	76	67
								0%	0%	0%	0%	0%	0%
							grade 2 events	1894	1741	16906	1968	8628	4605
								2%	2%	14%	2%	8%	4%
							grade 3 events	837	863	2068	851	3831	2190
								1%	1%	1%	1%	3%	2%
							grade 4 events	874	870	2050	855	3674	2102
								1%	1%	1%	1%	3%	2%
							grade 5 events	3056	3231	8238	3475	10010	4537
								3%	4%	6%	4%	9%	4%
							grade 6 events	1619	1577	27317	1890	22949	5274
								1%	2%	23%	2%	21%	5%
							grade 7 events	68692	64260	52594	63607	51839	70506
								84%	83%	44%	83%	49%	73%

2.2 Compared Parameters

Parameter	Planned	Actual	Parameter	Planned	Actual
Instrument	ACIS	ACIS	Obspar format version number	7	7
Detector	ACIS-235678	ACIS-235678	Obspar file type	PREDICTED	ACTUAL
Grating	NONE	NONE	Obspar update status	NONE	UPDATED
Data mode	FAINT	FAINT	Number of optional ACIS chips dropped	0	0
Observation mode	POINTING	POINTING	On-chip summing requested	N	N
[deg] Pointing RA	246.458992	246.4769558039156	Subarray requested	NONE	NONE
[deg] Pointing Dec	-44.695375	-44.71941664891732	Alternating exposures requested	N	N
[deg] Pointing Roll	267.018899	267.1881571489637	[s] Primary exposure time	0.000000	3.2
[mm] SIM focus pos	-0.684267	-0.6828225247311905			
[mm] SIM defocus	0	0.001444936568705701			
[mm] SIM translation stage pos	-190.132523	-190.1400660498719			
[mm] SIM translation stage offset	0	0.00754346686406393			
[s] Observation start time (MET)	209114992.184000	209113702.53298			
Observation start date	2004-08-17T07:28:48	2004-08-17T07:08:22			
[s] Observation end time (MET)	209124992.184000	209125831.35852			
Observation end date	2004-08-17T10:15:28	2004-08-17T10:30:31			
Read mode	TIMED	TIMED			

2.3 Aspect

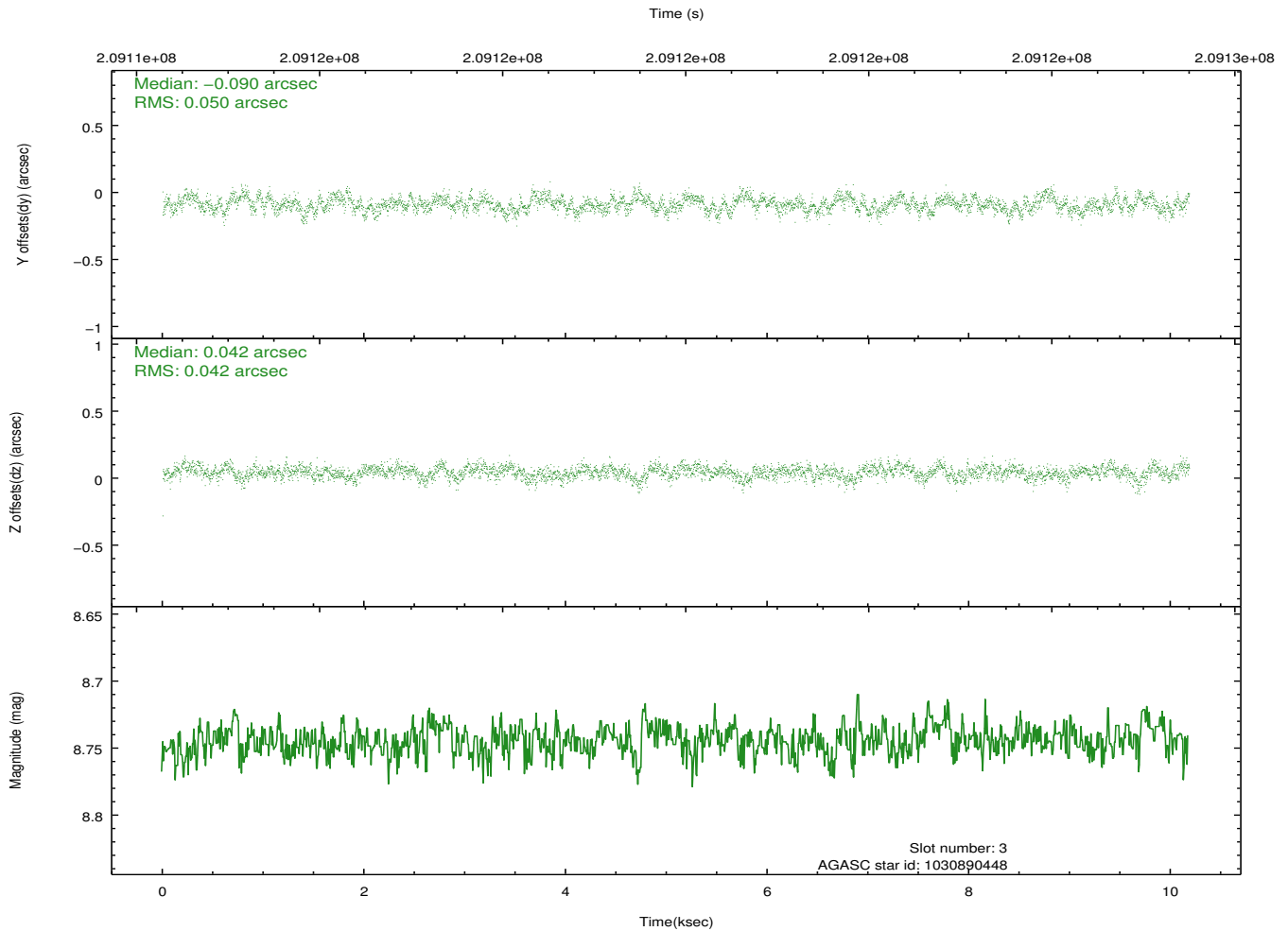
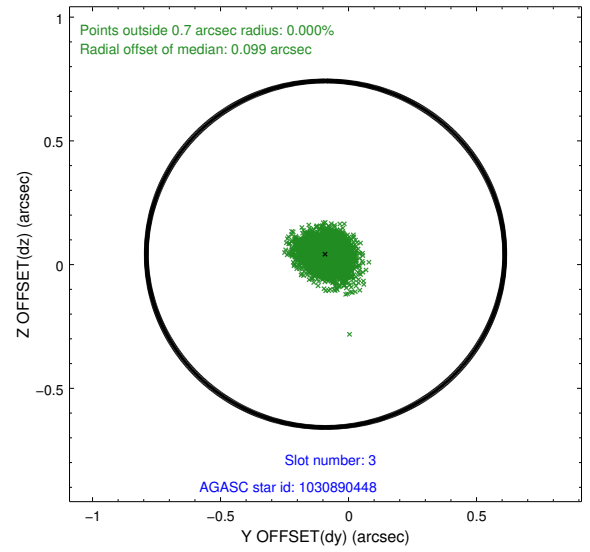
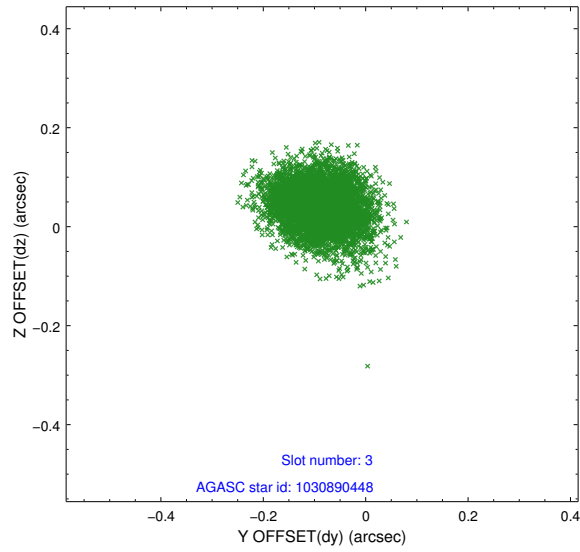


Slot Statistics

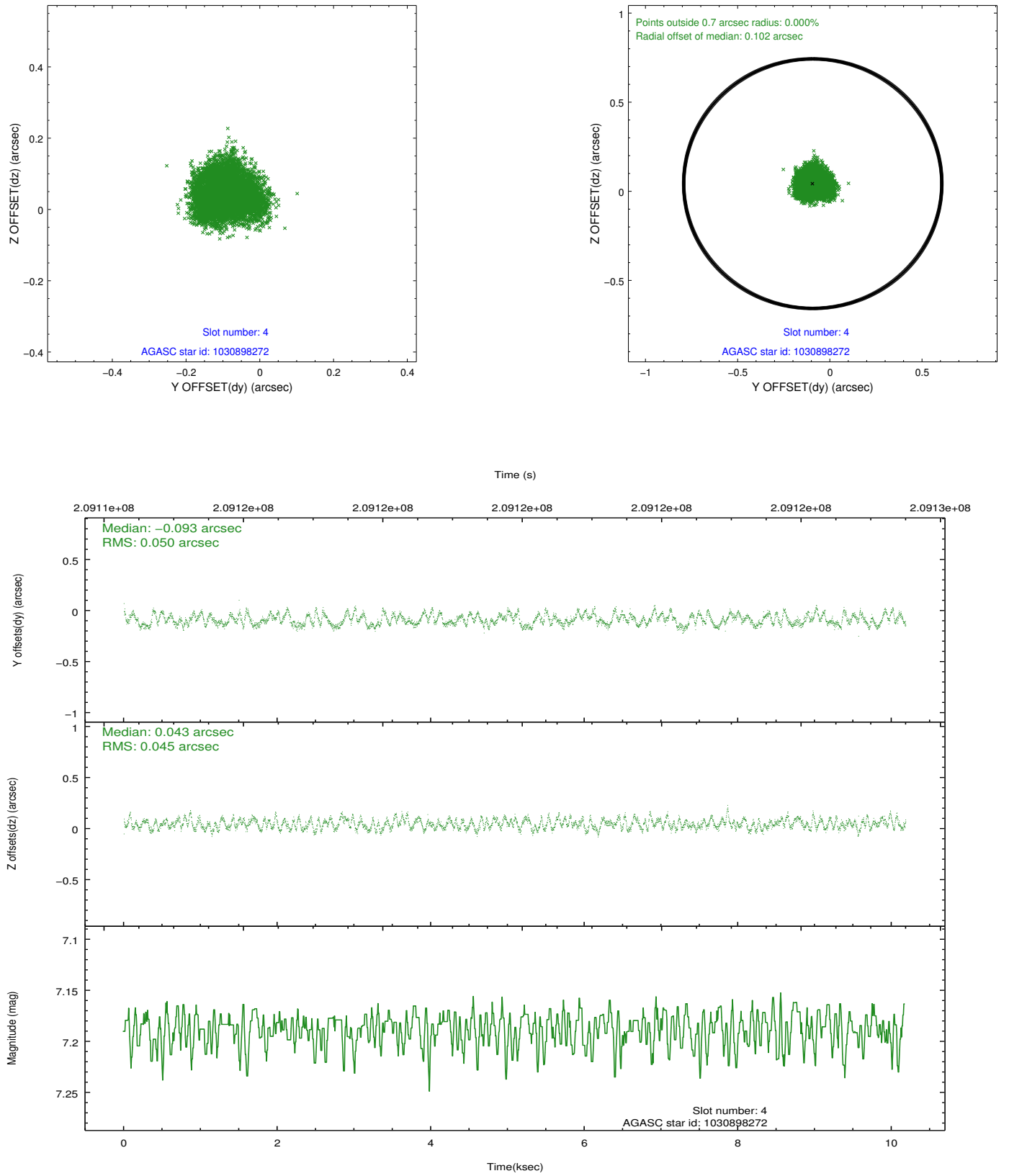
slot	status	id	mag	n_pts	med_dy	med_dz	dr1	dr2	ra	dec	mean_y	mean_z
0	FID	ACIS-S-2	7.11	2485	-0.042	-0.059	0.008	0.013	0.000000	0.000000	-757.50	-1729.58
1	FID	ACIS-S-4	7.20	2485	0.114	0.036	0.007	0.012	0.000000	0.000000	2155.72	178.43
2	FID	ACIS-S-5	7.23	2484	-0.104	0.032	0.007	0.011	0.000000	0.000000	-1809.72	172.73
3	GUIDE	1030890448	8.74	4965	-0.090	0.042	0.069	0.113	246.960720	-44.309948	-1448.88	1218.60
4	GUIDE	1030898272	7.19	4969	-0.093	0.043	0.073	0.108	247.207863	-44.812617	330.50	1932.62
5	GUIDE	1089478400	7.90	4966	0.129	-0.089	0.064	0.101	246.169044	-45.180500	1784.24	-643.41
6	GUIDE	1089481136	8.06	4968	0.059	0.045	0.060	0.098	247.200676	-45.033759	1127.50	1948.17
7	GUIDE	1089502312	6.72	4968	-0.012	-0.037	0.064	0.097	246.225648	-45.349496	2383.84	-466.37

2.4 Star Slots

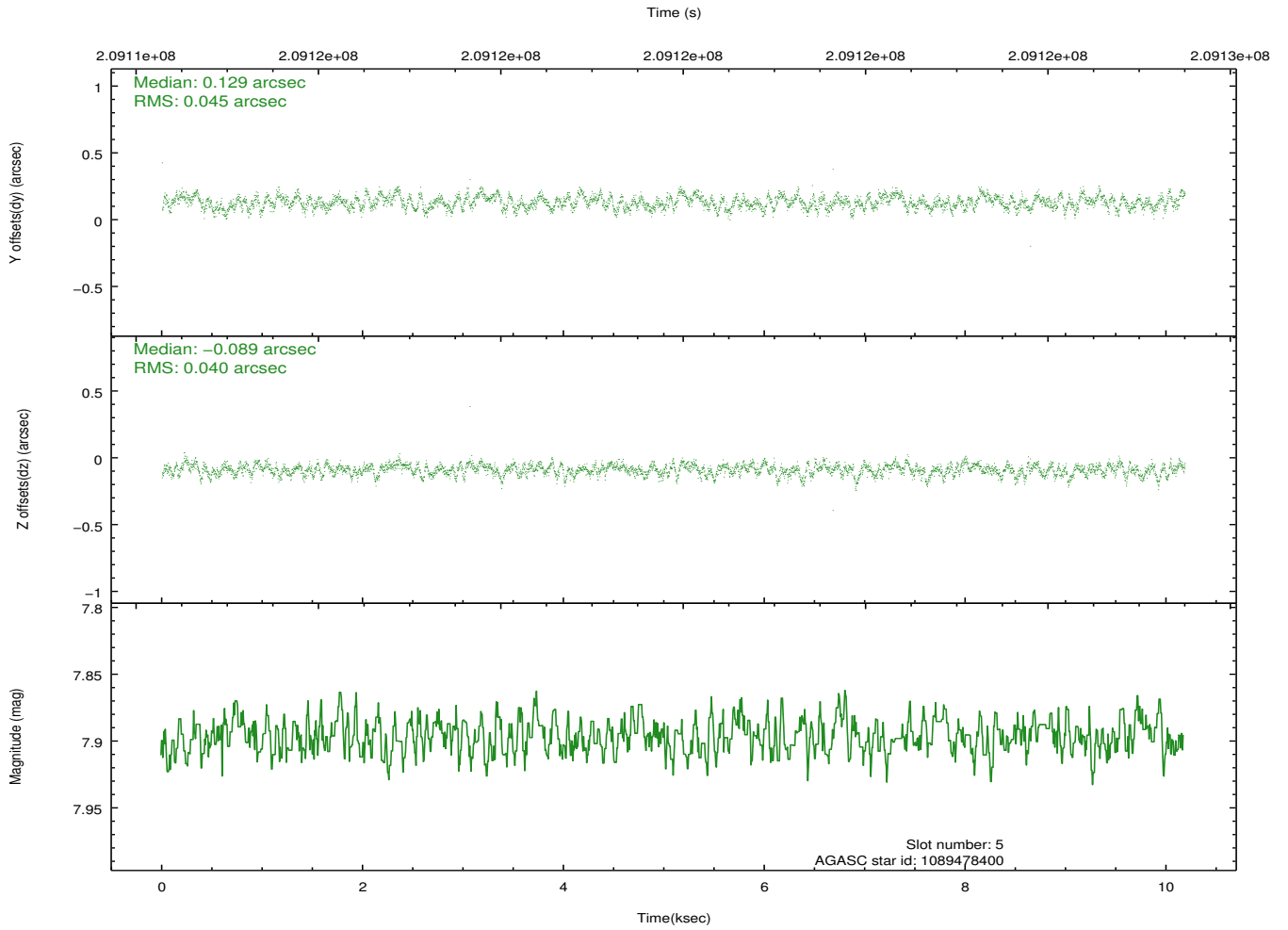
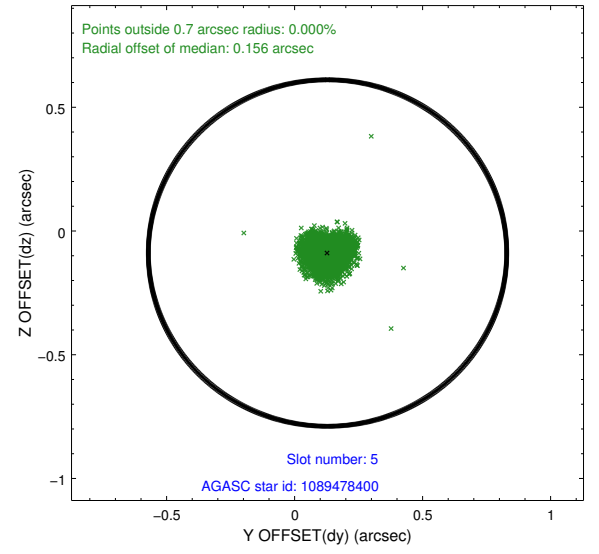
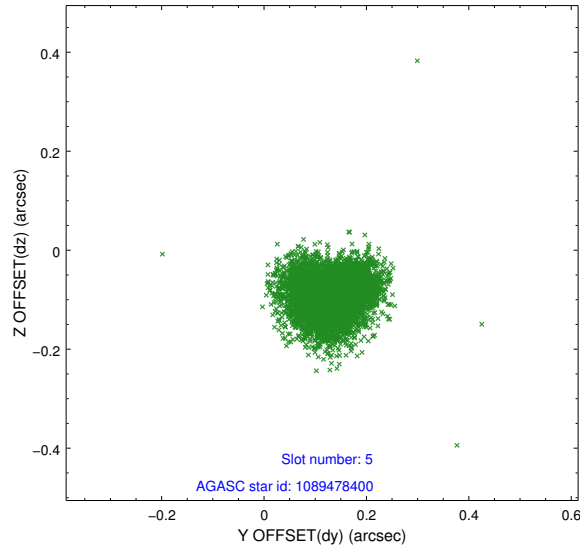
2.4.1 Slot 3



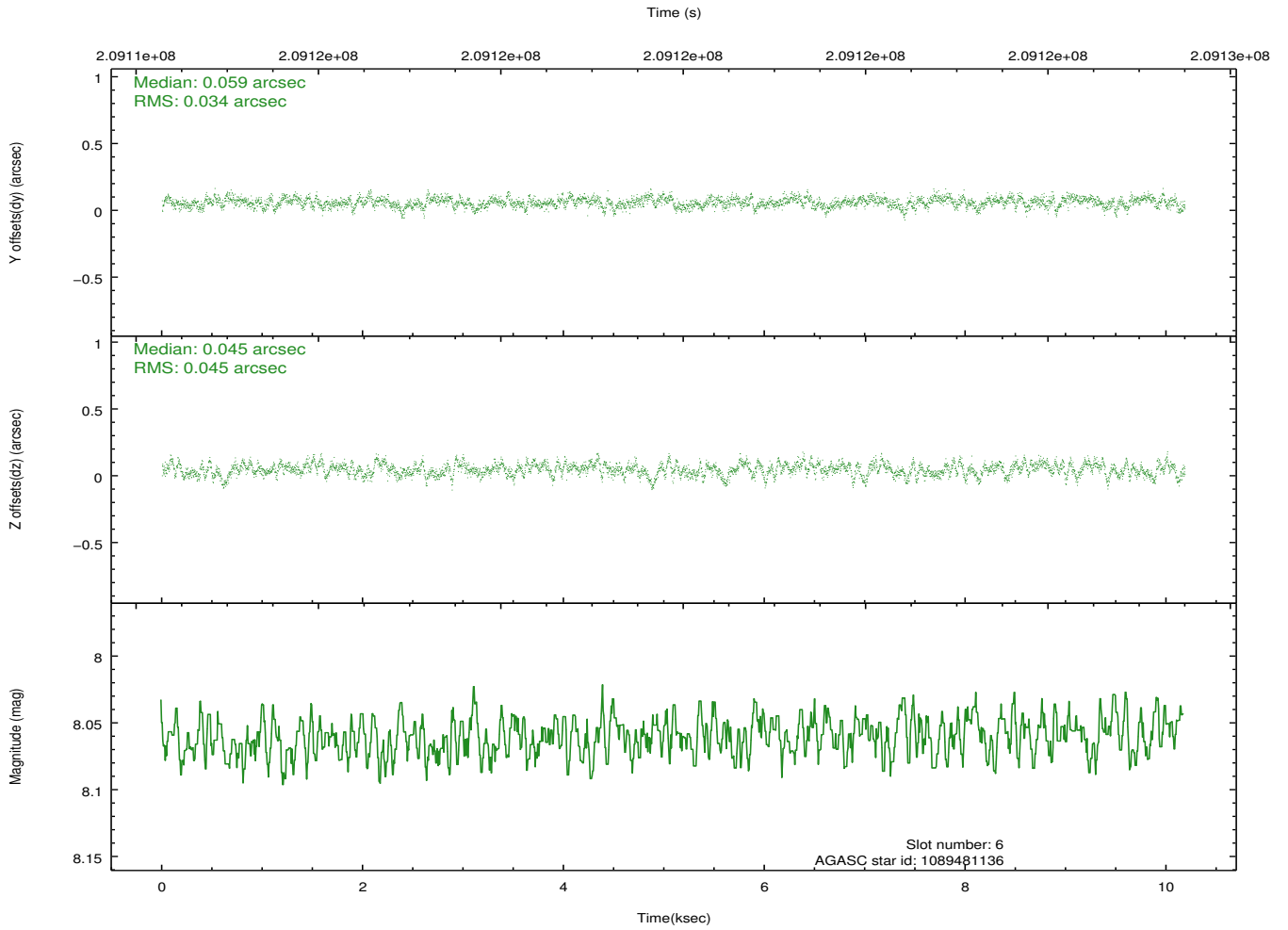
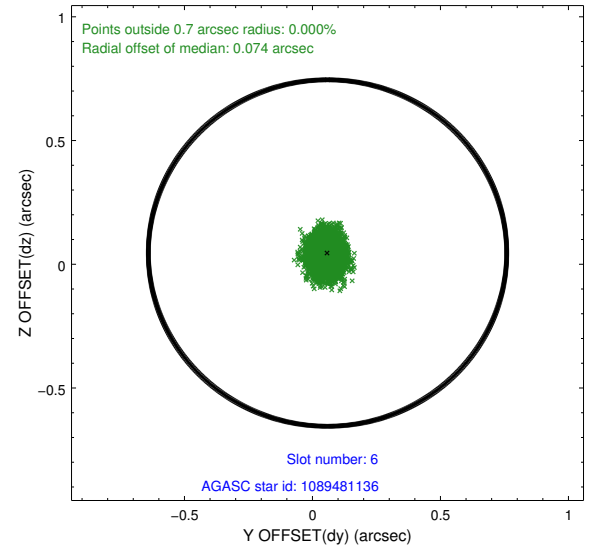
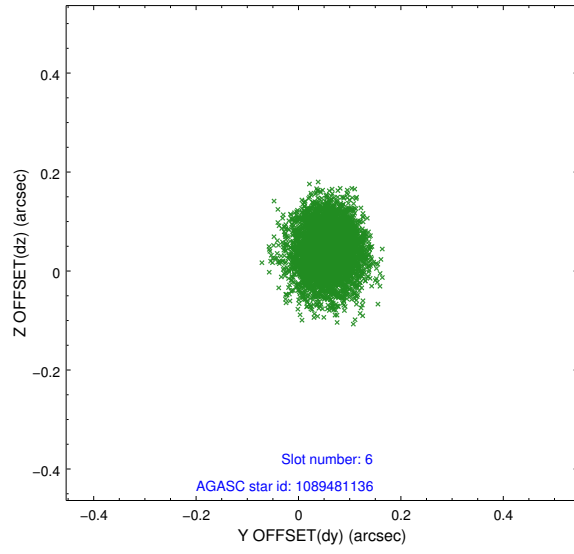
2.4.2 Slot 4



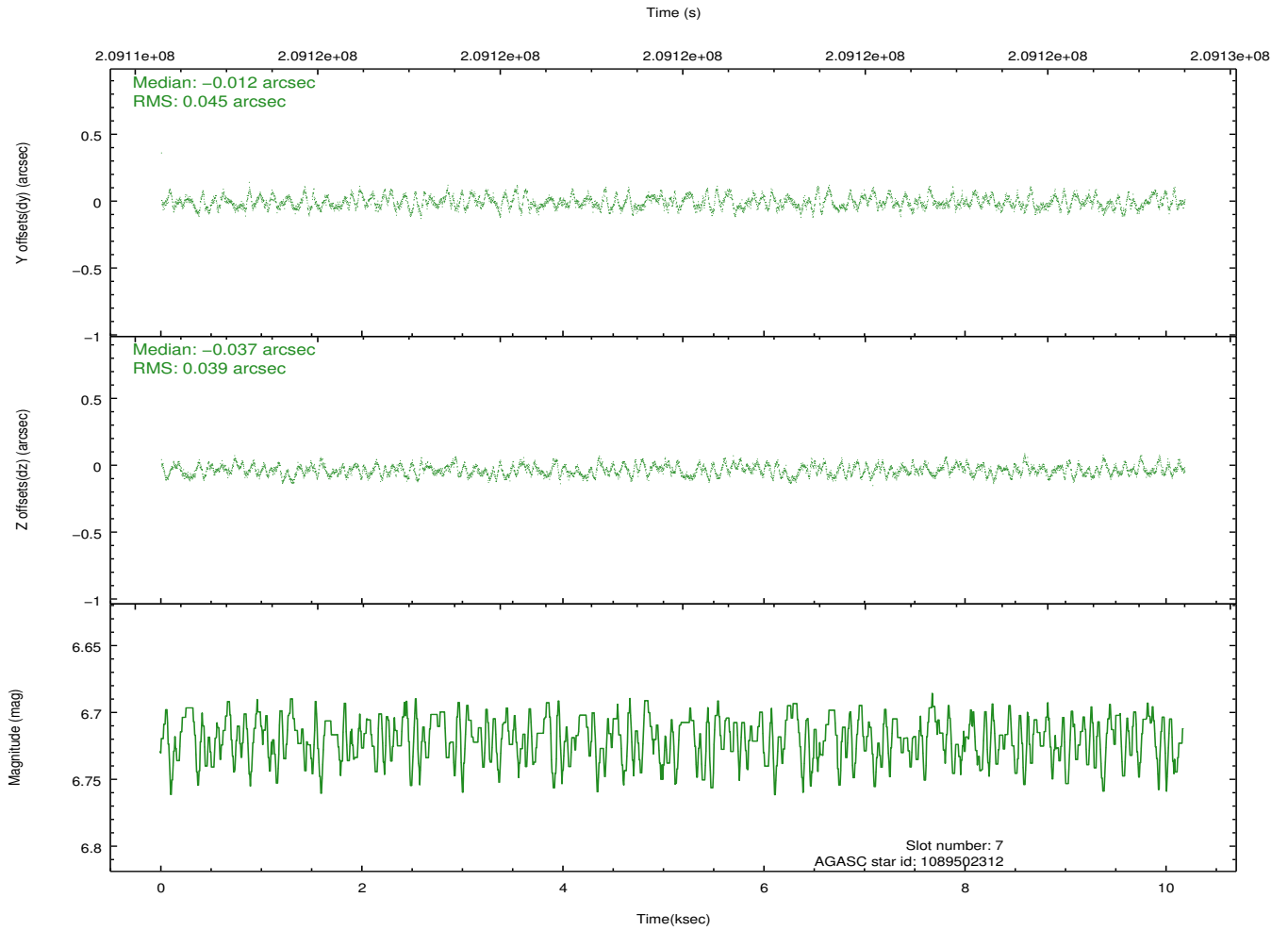
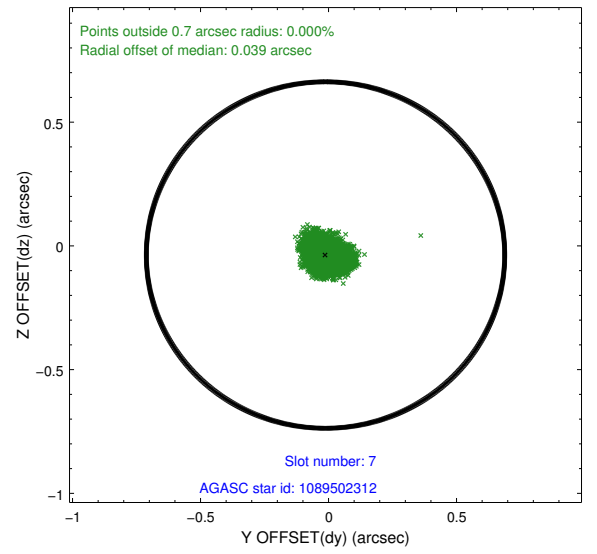
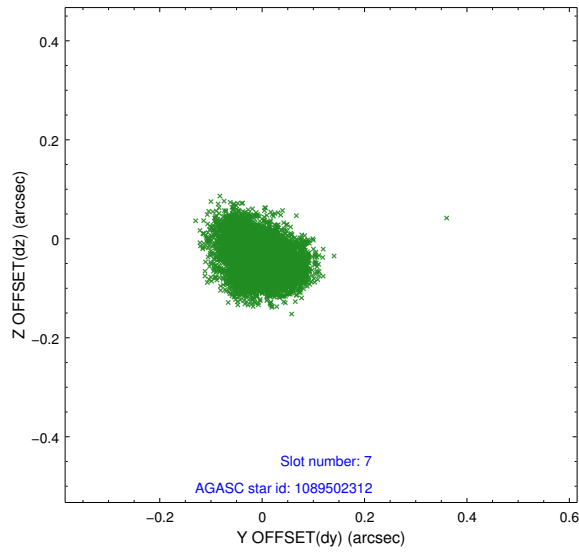
2.4.3 Slot 5



2.4.4 Slot 6

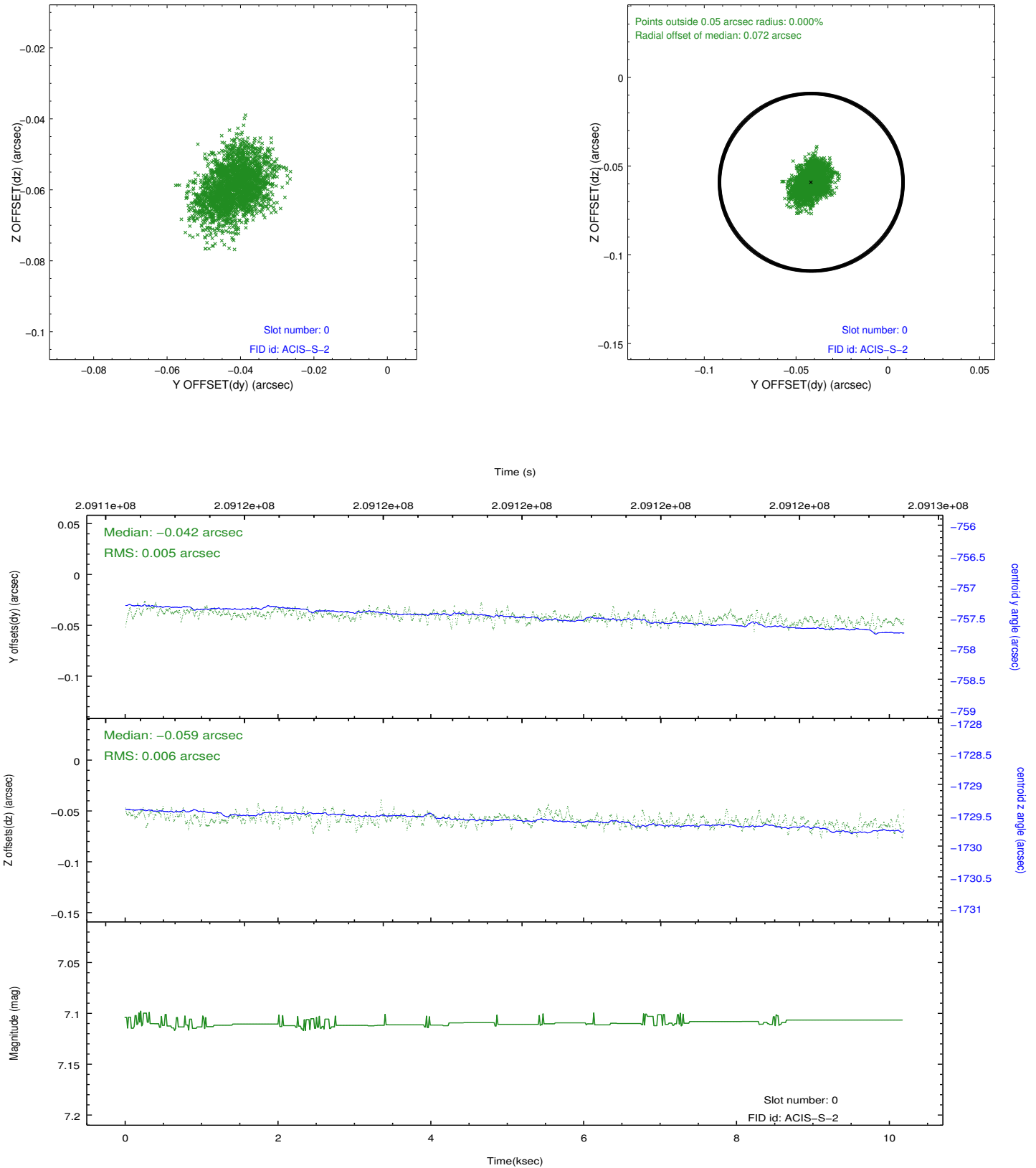


2.4.5 Slot 7

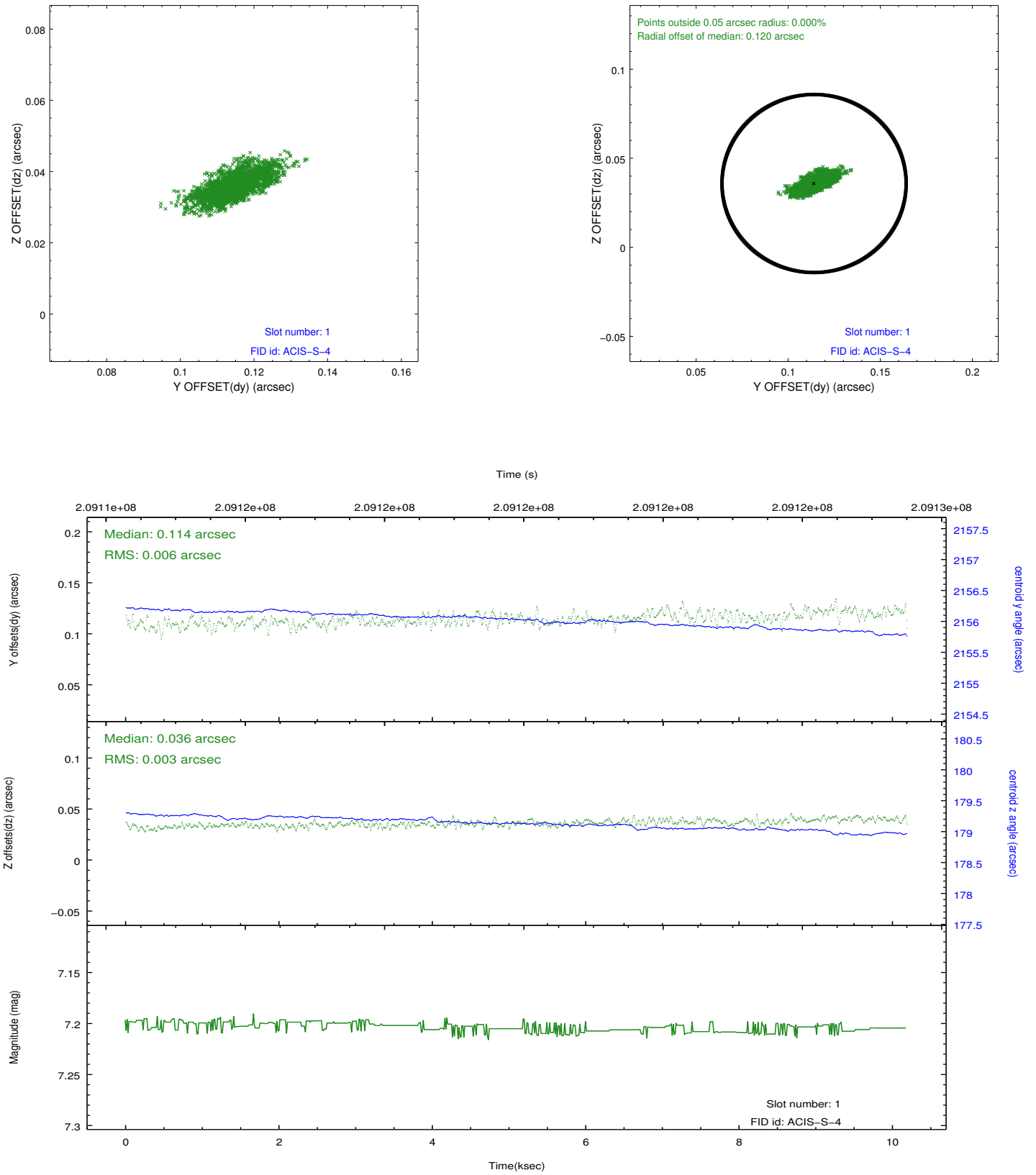


2.5 FID Slots

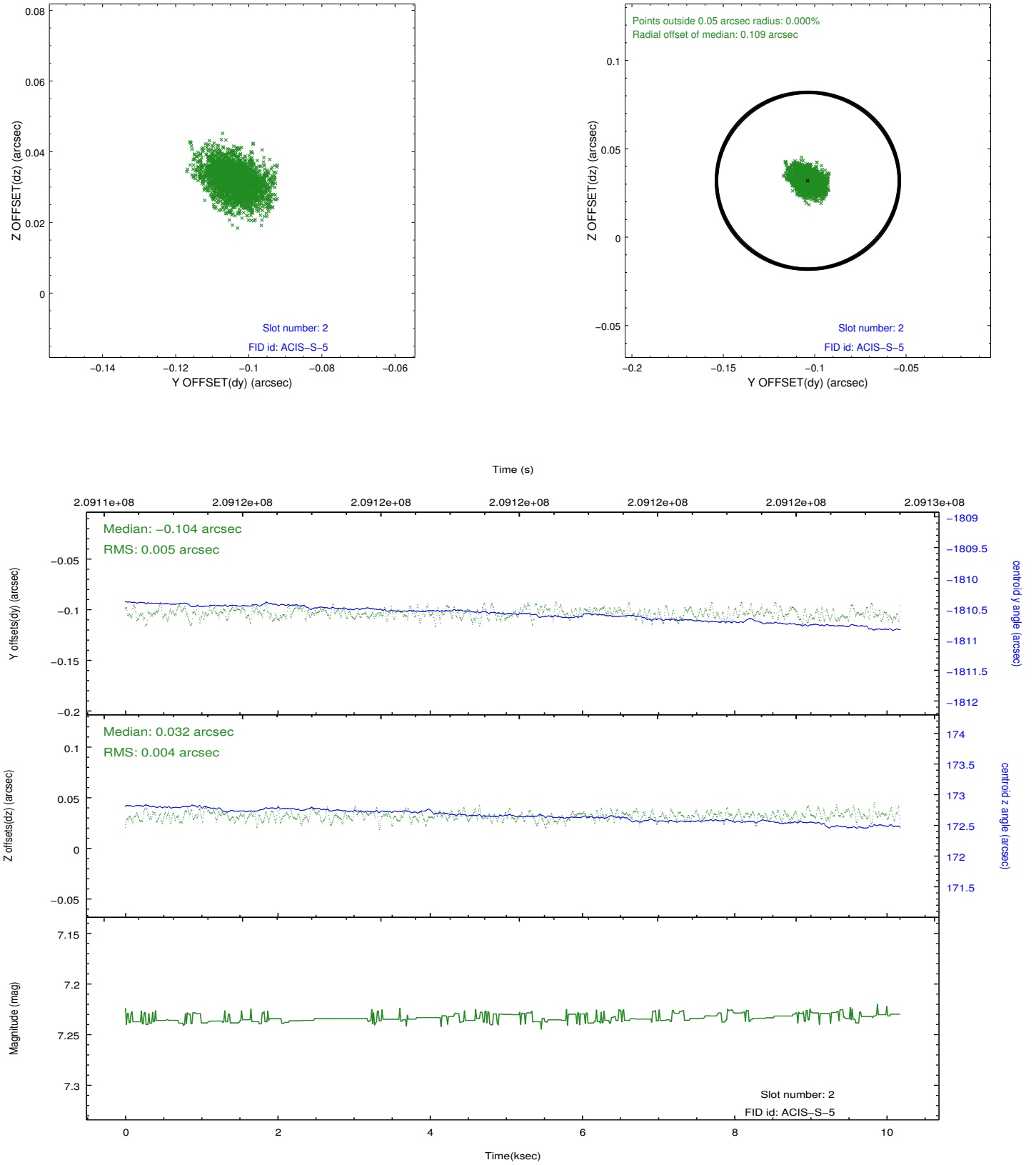
2.5.1 Slot 0



2.5.2 Slot 1



2.5.3 Slot 2



A Summary

A.1 Status

V&V Scientist	Jen Lauer
V&V Date (YYYY-MM-DD)	2012.12.21
V&V Edition	1
V&V Disposition and Status	OK
V&V Charge Time	10.175

A.2 Comments